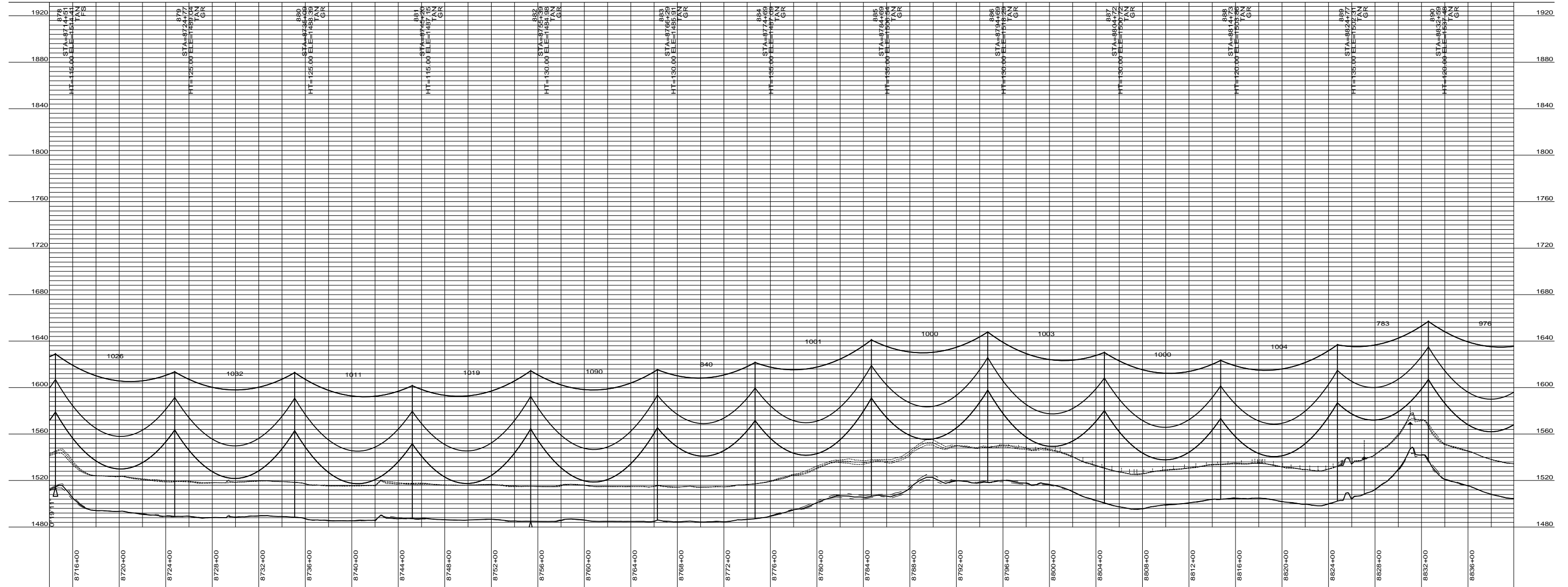
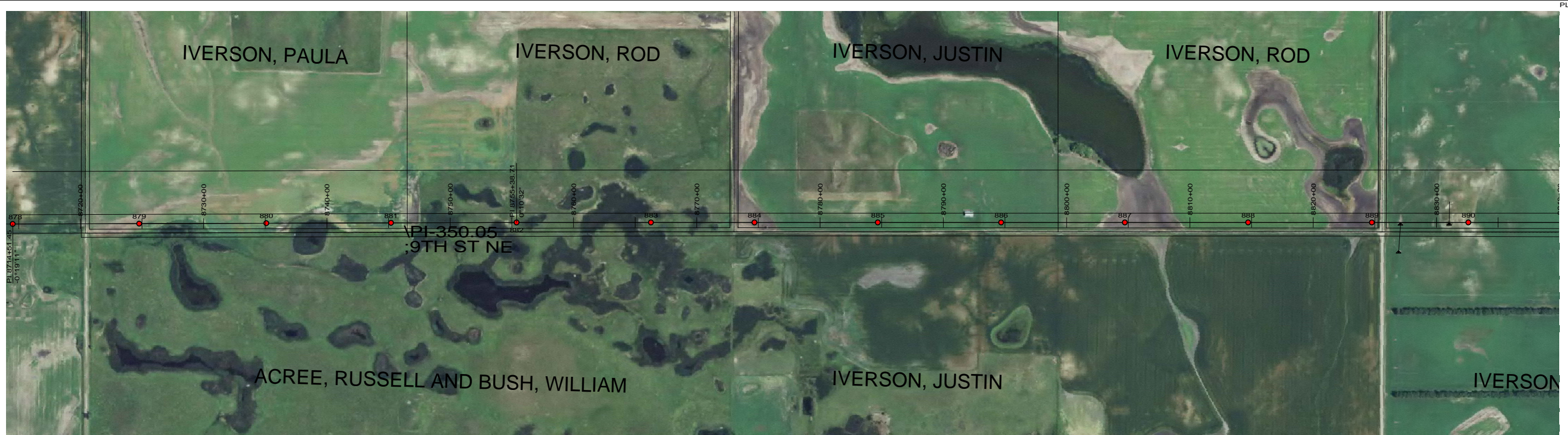


PRELIMINARY



DESIGN CONDITIONS:
 SHIELD _____
 20% RTS @ -20 DEGREES F, INITIAL CLEARANCE LINE: XX'
 CONDUCTOR _____
 20% RTS @ -20 DEGREES F, INITIAL

REV	DATE	APP	DESCRIPTION	DFTR

8000 S. CHESTER STREET
 SUITE 500
 CENTENNIAL, CO 80112

A STANLEY GROUP COMPANY
 ENGINEERING, ENVIRONMENTAL AND
 CONSTRUCTION SERVICES - WORLDWIDE

DESIGNED XXXXX
 DRAWN XXXXX
 CHECKED XXXXX
 APPROVED XXXXX
 DATE 2/7/2012

Center to Grand Forks Project

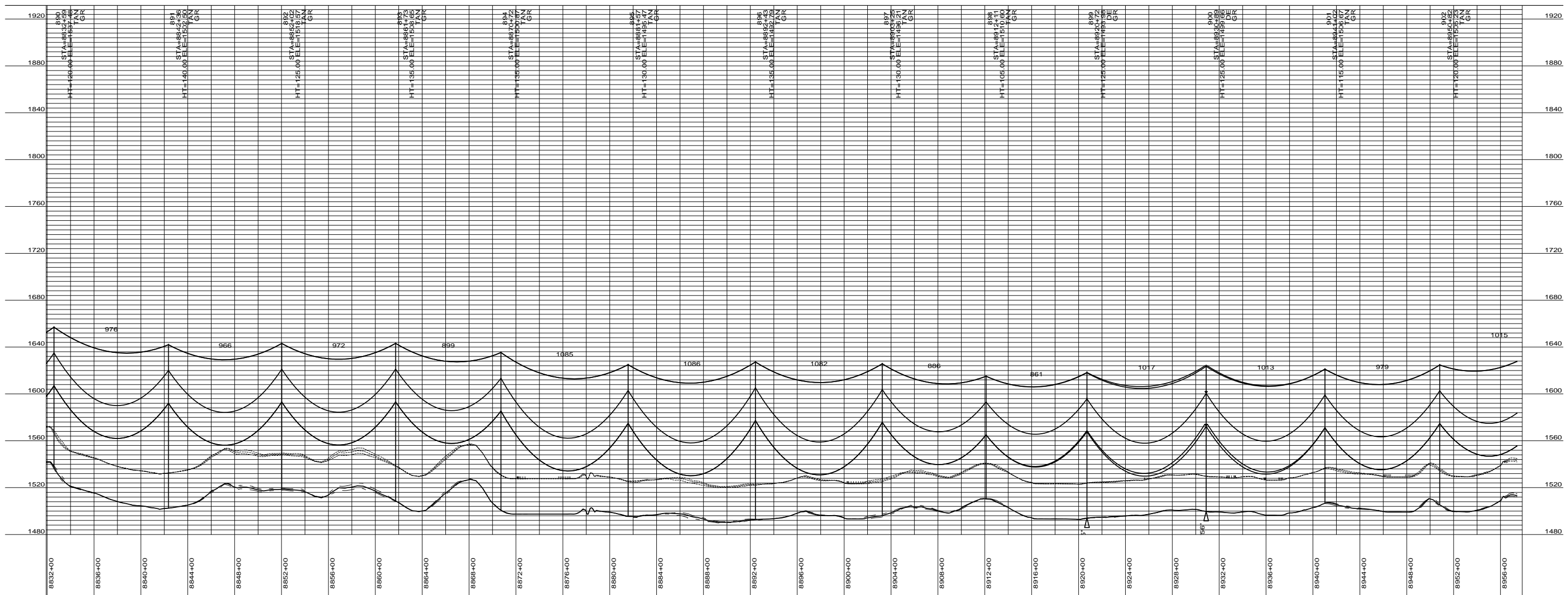
COOPERATIVE, INC.

GRIGGS COUNTY

400.0 FT. HORIZ. SCALE
 40.0 FT. VERT. SCALE

55-PP-GR000-001

PRELIMINARY



DESIGN CONDITIONS:
 SHIELD _____
 20% RTS @ -20 DEGREES F, INITIAL CLEARANCE LINE: XX'
 CONDUCTOR _____
 20% RTS @ -20 DEGREES F, INITIAL

REV	DATE	APP	DESCRIPTION	DFTR

Stanley Consultants INC.
 8000 S. CHESTER STREET
 SUITE 500
 CENTENNIAL, CO 80112
 A STANLEY GROUP COMPANY
 ENGINEERING, ENVIRONMENTAL AND
 CONSTRUCTION SERVICES - WORLDWIDE

DESIGNED XXXXX
 DRAWN XXXXX
 CHECKED XXXXX
 APPROVED XXXXX
 DATE 2/7/2012

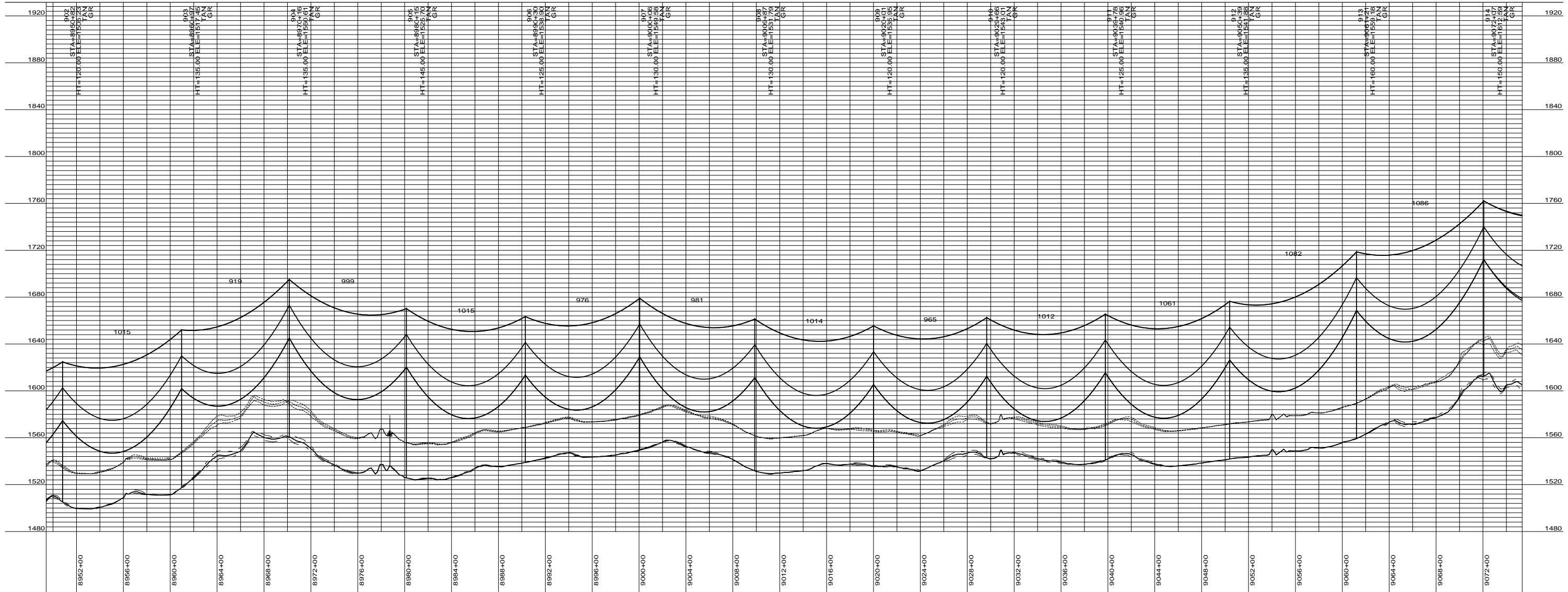
Center to Grand Forks Project
Minnkota Power
 COOPERATIVE, INC.

GRIGGS COUNTY
 400.0 FT. HORIZ. SCALE
 40.0 FT. VERT. SCALE
 55-PP-GR000-002

PRELIMINARY



P1-208.33
 WIDE 100.00
 NORTH PACIFIC
 P1-173.58
 RAILROAD
 RIGHT-OF-WAY



DESIGN CONDITIONS:
 SHIELD _____
 20% RTS @ -20 DEGREES F, INITIAL CLEARANCE LINE: XX'

CONDUCTOR _____
 20% RTS @ -20 DEGREES F, INITIAL

REV	DATE	APP	DESCRIPTION	DFTR

8000 S. CHESTER STREET
 SUITE 500
 CENTENNIAL, CO 80112

A STANLEY GROUP COMPANY
 ENGINEERING, ENVIRONMENTAL AND
 CONSTRUCTION SERVICES - WORLDWIDE

DESIGNED XXXXX
 DRAWN XXXXX
 CHECKED XXXXX
 APPROVED XXXXX
 DATE 2/7/2012

Center to Grand Forks Project

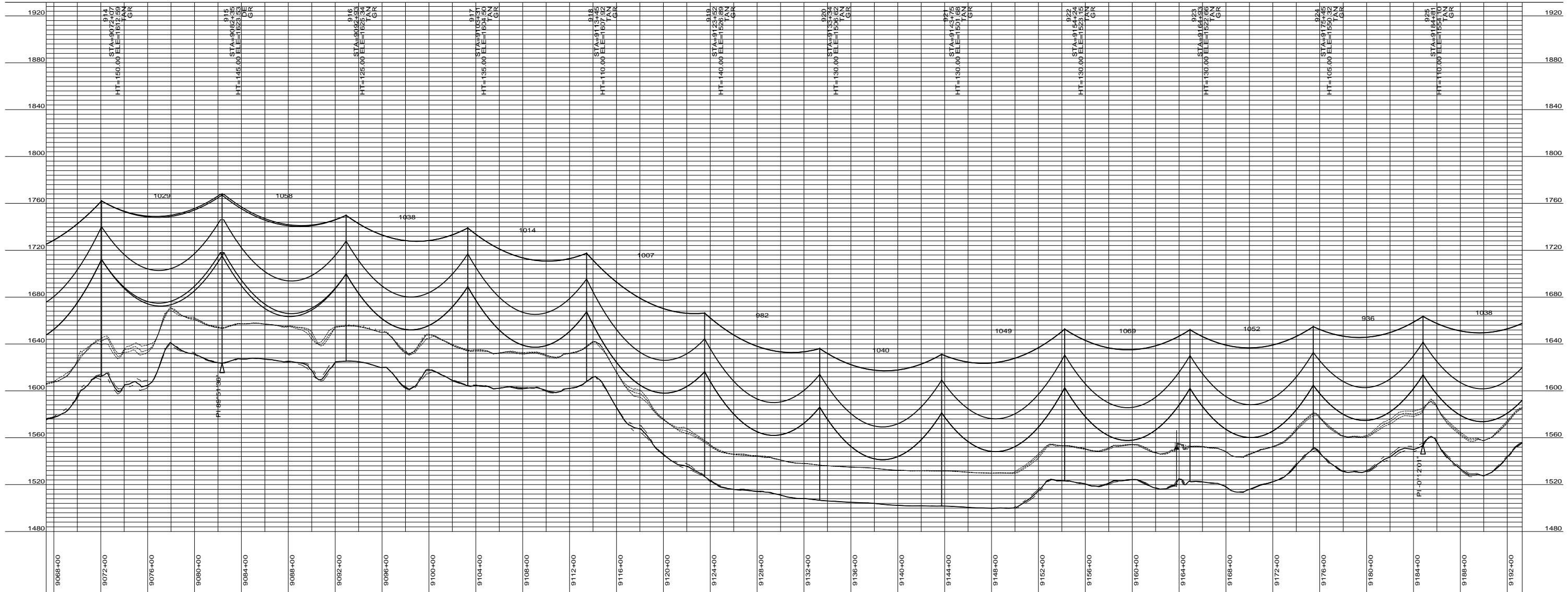
COOPERATIVE, INC.

GRIGGS COUNTY

400.0 FT. HORIZ. SCALE
 40.0 FT. VERT. SCALE

55-PP-GR000-003

PRELIMINARY



DESIGN CONDITIONS:
 SHIELD _____
 20% RTS @ -20 DEGREES F, INITIAL CLEARANCE LINE: XX'

CONDUCTOR _____
 20% RTS @ -20 DEGREES F, INITIAL

REV	DATE	APP	DESCRIPTION	DFTR



Stanley Consultants INC.
 A STANLEY GROUP COMPANY
 ENGINEERING, ENVIRONMENTAL AND
 CONSTRUCTION SERVICES - WORLDWIDE

8000 S. CHESTER STREET
 SUITE 500
 CENTENNIAL, CO 80112

DESIGNED XXXXX
 DRAWN XXXXX
 CHECKED XXXXX
 APPROVED XXXXX
 DATE 2/7/2012


Center to Grand Forks Project



COOPERATIVE, INC.

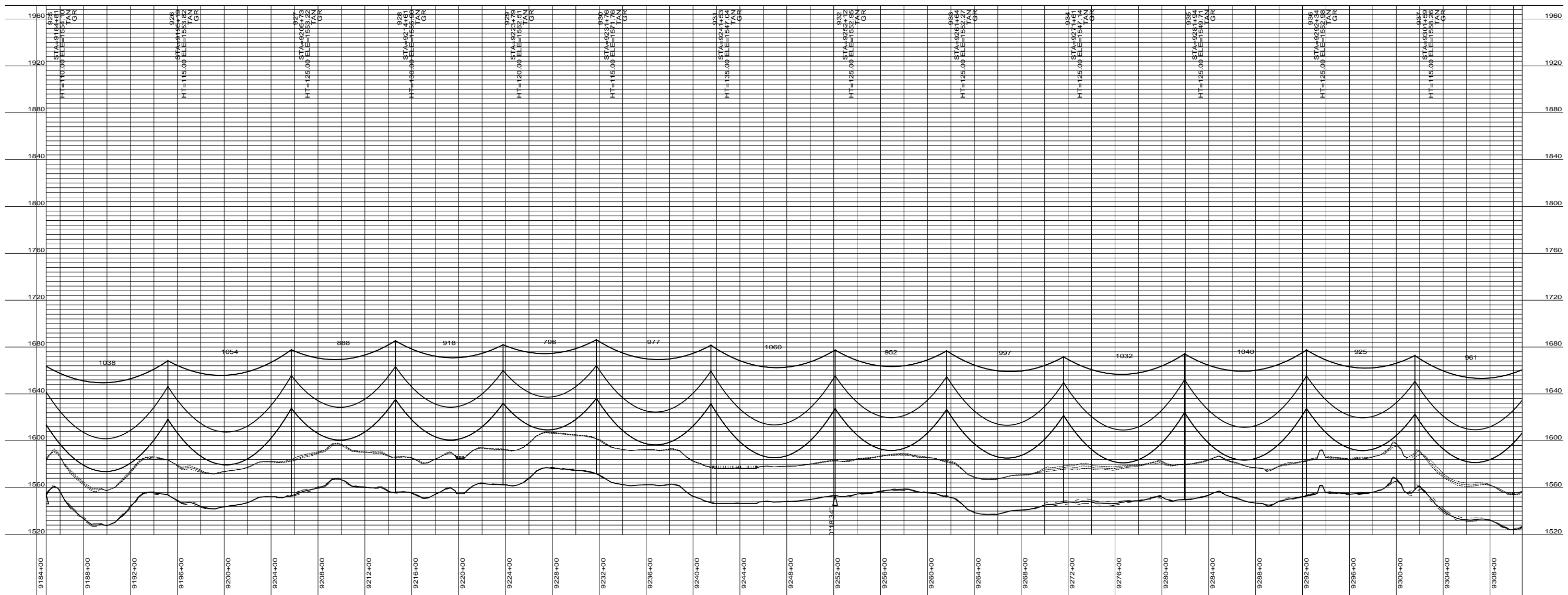
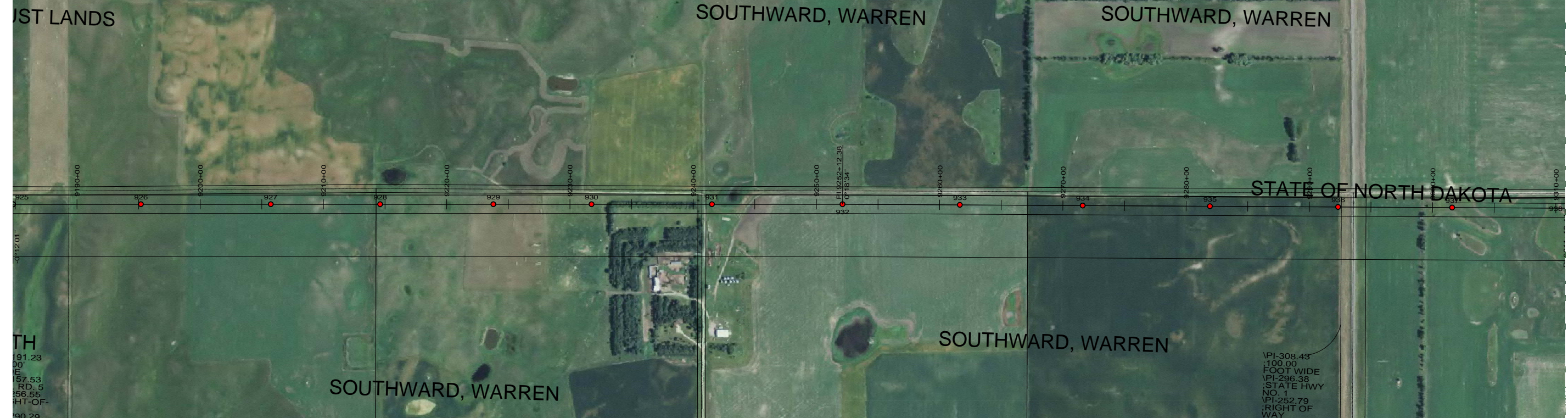
GRIGGS COUNTY

400.0 FT. HORIZ. SCALE
 40.0 FT. VERT. SCALE



55-PP-GR000-004

PRELIMINARY



DESIGN CONDITIONS:
 SHIELD _____
 20% RTS @ -20 DEGREES F, INITIAL CLEARANCE LINE: XX'
 CONDUCTOR _____
 20% RTS @ -20 DEGREES F, INITIAL

REV	DATE	APP	DESCRIPTION	DFTR

8000 S. CHESTER STREET
 SUITE 500
 CENTENNIAL, CO 80112

A STANLEY GROUP COMPANY
 ENGINEERING, ENVIRONMENTAL AND
 CONSTRUCTION SERVICES - WORLDWIDE

DESIGNED	XXXXX
DRAWN	XXXXX
CHECKED	XXXXX
APPROVED	XXXXX
DATE	2/7/2012

Center to Grand Forks Project

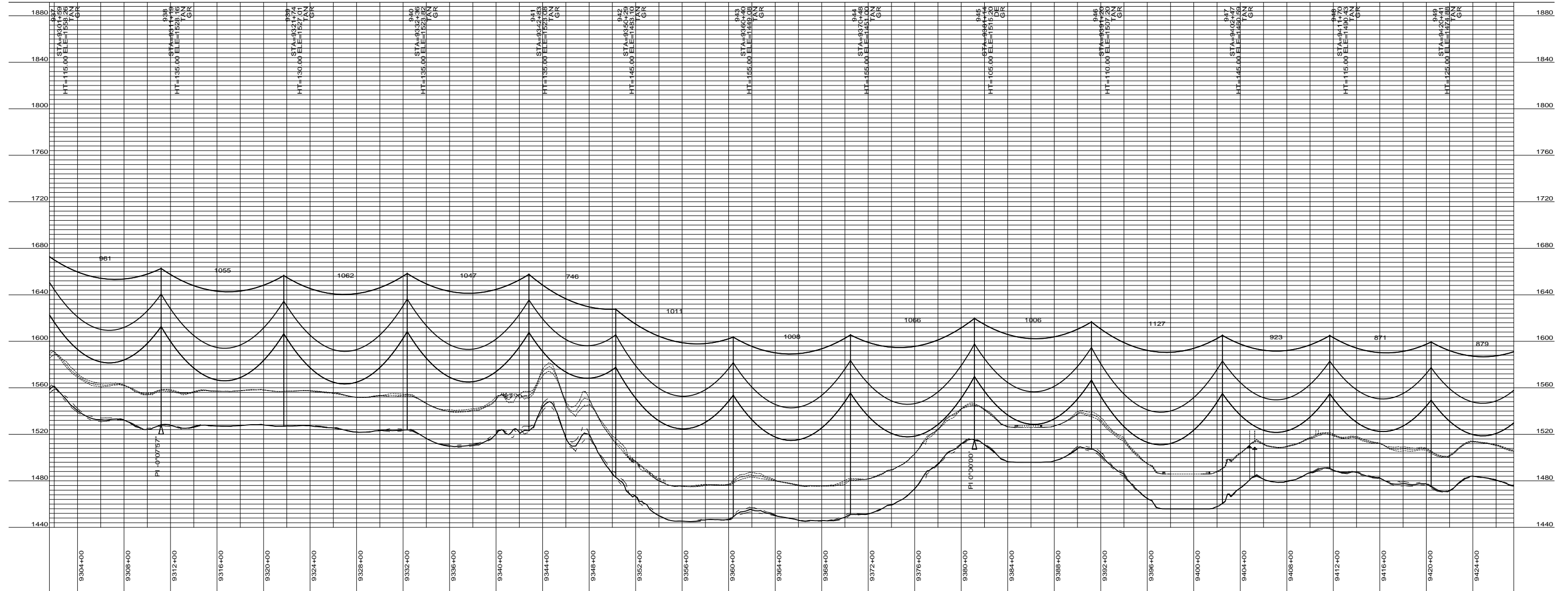
COOPERATIVE, INC.

GRIGGS COUNTY

400.0 FT. HORIZ. SCALE
 40.0 FT. VERT. SCALE

55-PP-GR000-005

PRELIMINARY



DESIGN CONDITIONS:
SHIELD _____
20% RTS @ -20 DEGREES F, INITIAL CLEARANCE LINE: XX'

CONDUCTOR _____
20% RTS @ -20 DEGREES F, INITIAL

REV	DATE	APP	DESCRIPTION	DFTR

8000 S. CHESTER STREET
SUITE 500
CENTENNIAL, CO 80112

A STANLEY GROUP COMPANY
ENGINEERING, ENVIRONMENTAL AND
CONSTRUCTION SERVICES - WORLDWIDE

DESIGNED	XXXXX
DRAWN	XXXXX
CHECKED	XXXXX
APPROVED	XXXXX
DATE	2/7/2012

Center to Grand Forks Project

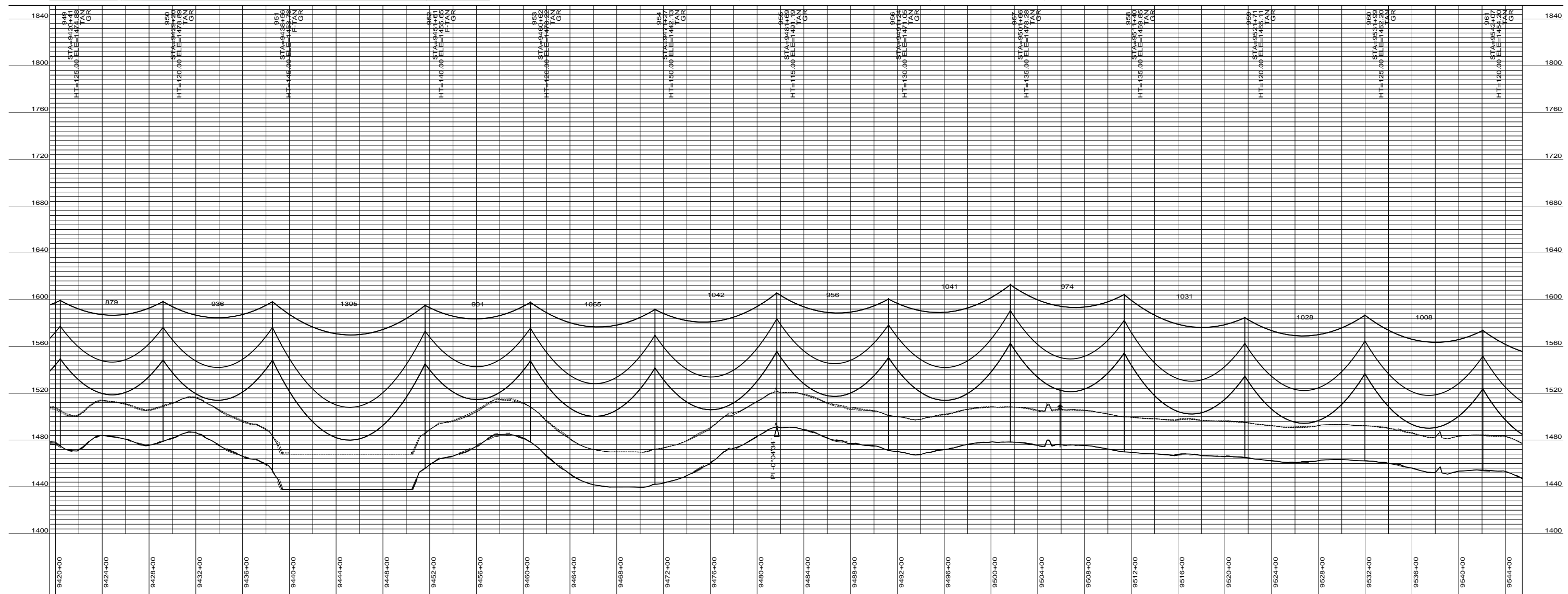
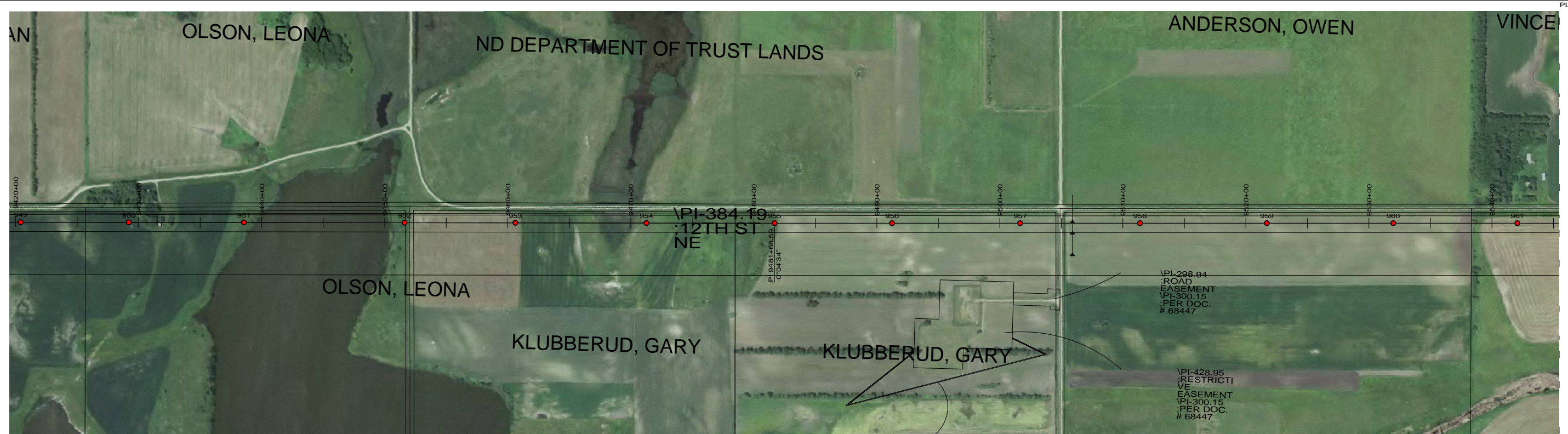
COOPERATIVE, INC.

GRIGGS COUNTY

400.0 FT. HORIZ. SCALE
40.0 FT. VERT. SCALE

55-PP-GR000-006

PRELIMINARY



DESIGN CONDITIONS:
 SHIELD _____
 20% RTS @ -20 DEGREES F, INITIAL
 CLEARANCE LINE: XX'

CONDUCTOR _____
 20% RTS @ -20 DEGREES F, INITIAL

REV	DATE	APP	DESCRIPTION	DFTR



Stanley Consultants INC.
 A STANLEY GROUP COMPANY
 ENGINEERING, ENVIRONMENTAL AND
 CONSTRUCTION SERVICES - WORLDWIDE

8000 S. CHESTER STREET
 SUITE 500
 CENTENNIAL, CO 80112

DESIGNED	XXXXX
DRAWN	XXXXX
CHECKED	XXXXX
APPROVED	XXXXX
APPROVED	
DATE	2/7/2012


Center to Grand Forks Project



Minnkota Power
 COOPERATIVE, INC.

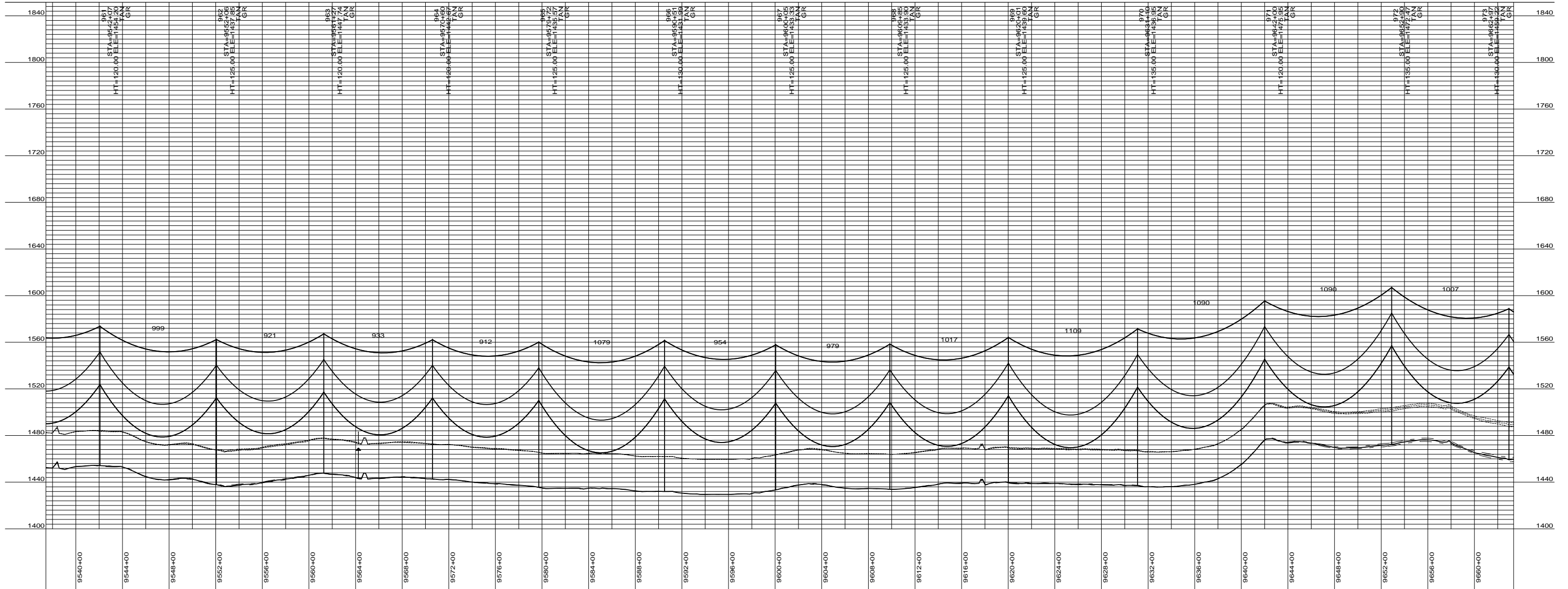
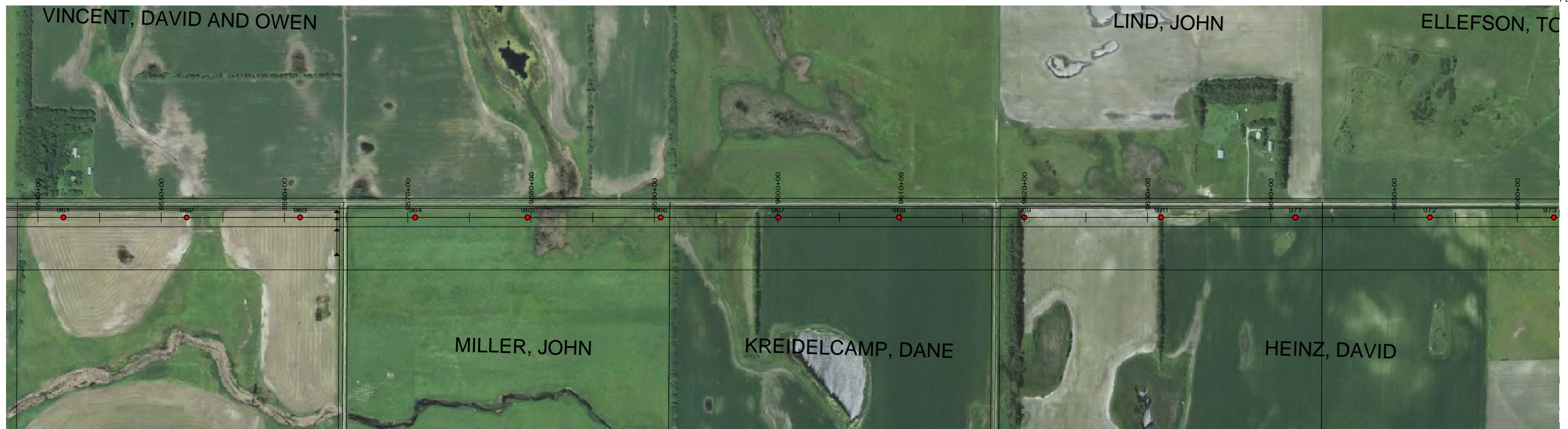
GRIGGS COUNTY

400.0 FT. HORIZ. SCALE
 40.0 FT. VERT. SCALE



55-PP-GR000-007

PRELIMINARY



DESIGN CONDITIONS:
 SHIELD _____
 20% RTS @ -20 DEGREES F, INITIAL CLEARANCE LINE: XX'

CONDUCTOR _____
 20% RTS @ -20 DEGREES F, INITIAL

REV	DATE	APP	DESCRIPTION	DFTR



Stanley Consultants INC.
 A STANLEY GROUP COMPANY
 ENGINEERING, ENVIRONMENTAL AND
 CONSTRUCTION SERVICES - WORLDWIDE

8000 S. CHESTER STREET
 SUITE 500
 CENTENNIAL, CO 80112

DESIGNED XXXXX
 DRAWN XXXXX
 CHECKED XXXXX
 APPROVED XXXXX
 DATE 2/7/2012


Center to Grand Forks Project



Minnkota Power
 COOPERATIVE, INC.

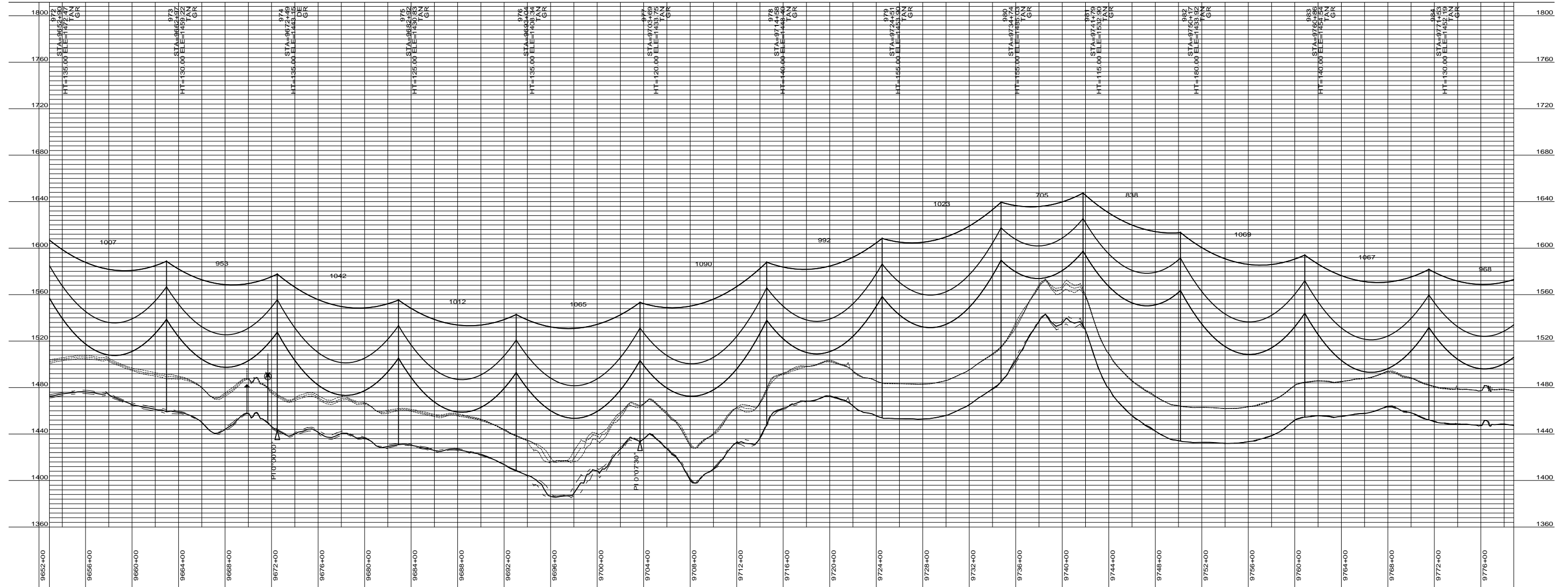
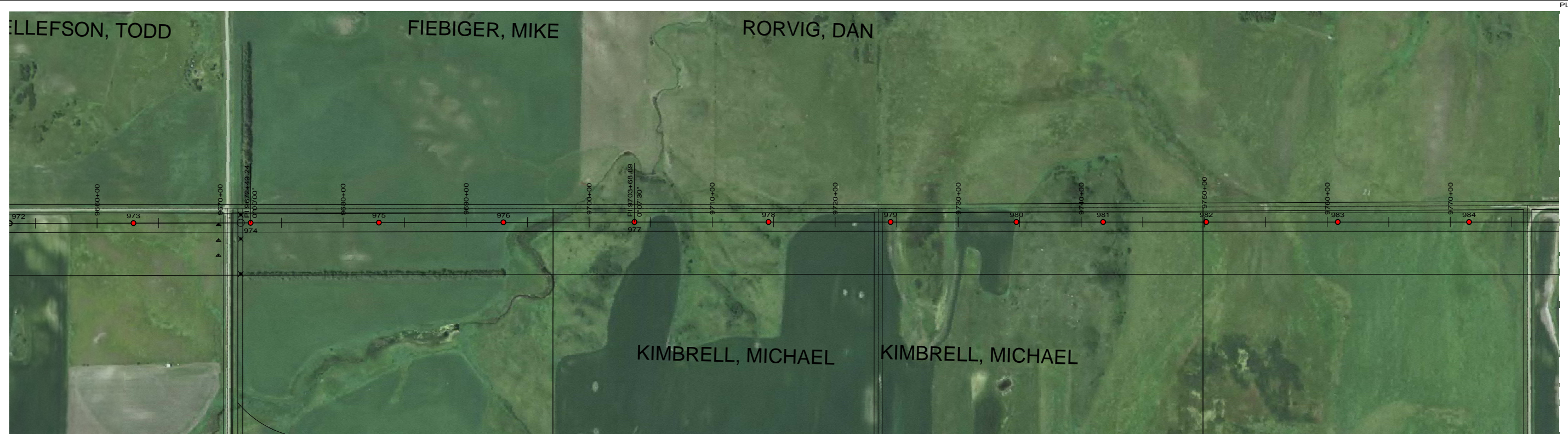
GRIGGS COUNTY

400.0 FT. HORIZ. SCALE
 40.0 FT. VERT. SCALE



55-PP-GR000-008

PRELIMINARY



DESIGN CONDITIONS:
 SHIELD _____
 20% RTS @ -20 DEGREES F, INITIAL CLEARANCE LINE: XX'

CONDUCTOR _____
 20% RTS @ -20 DEGREES F, INITIAL

REV	DATE	APP	DESCRIPTION	DFTR

8000 S. CHESTER STREET
 SUITE 500
 CENTENNIAL, CO 80112

A STANLEY GROUP COMPANY
 ENGINEERING, ENVIRONMENTAL AND
 CONSTRUCTION SERVICES - WORLDWIDE

DESIGNED	XXXXX
DRAWN	XXXXX
CHECKED	XXXXX
APPROVED	XXXXX
DATE	2/7/2012

Center to Grand Forks Project

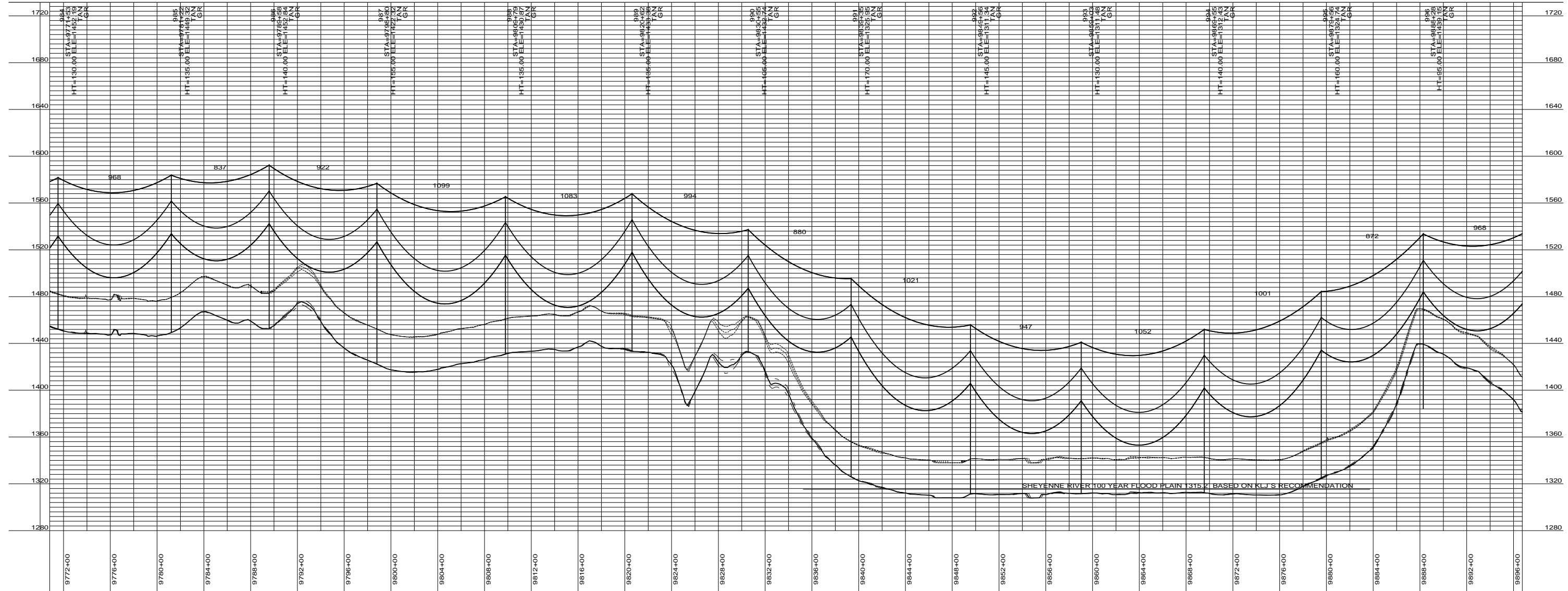
COOPERATIVE, INC.

GRIGGS COUNTY

400.0 FT. HORIZ. SCALE
 40.0 FT. VERT. SCALE

55-PP-GR000-009

PRELIMINARY



DESIGN CONDITIONS:
 SHIELD _____
 20% RTS @ -20 DEGREES F, INITIAL CLEARANCE LINE: XX'

CONDUCTOR _____
 20% RTS @ -20 DEGREES F, INITIAL

REV	DATE	APP	DESCRIPTION	DFTR



Stanley Consultants INC.
 A STANLEY GROUP COMPANY
 ENGINEERING, ENVIRONMENTAL AND
 CONSTRUCTION SERVICES - WORLDWIDE

8000 S. CHESTER STREET
 SUITE 500
 CENTENNIAL, CO 80112

DESIGNED XXXXX
 DRAWN XXXXX
 CHECKED XXXXX
 APPROVED XXXXX
 DATE 2/7/2012


Center to Grand Forks Project



COOPERATIVE, INC.

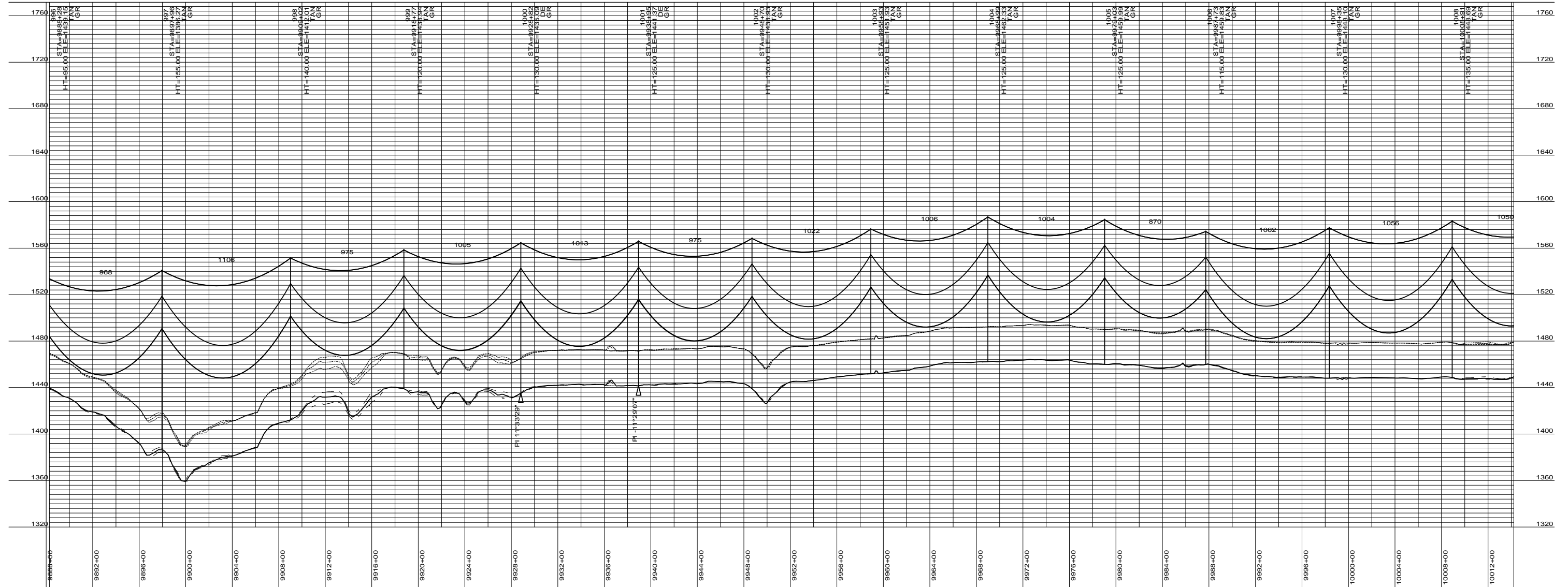
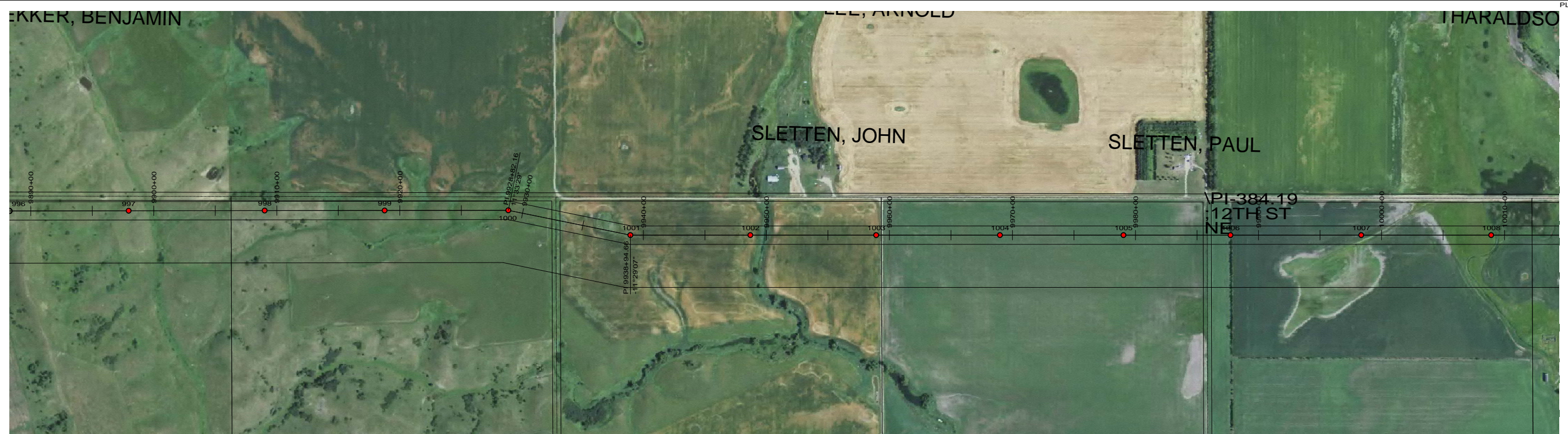
GRIGGS COUNTY

400.0 FT. HORIZ. SCALE
 40.0 FT. VERT. SCALE



55-PP-GR000-010

PRELIMINARY



DESIGN CONDITIONS:
 SHIELD _____
 20% RTS @ -20 DEGREES F, INITIAL CLEARANCE LINE: XX'
 CONDUCTOR _____
 20% RTS @ -20 DEGREES F, INITIAL

REV	DATE	APP	DESCRIPTION	DFTR



Stanley Consultants INC.

8000 S. CHESTER STREET
 SUITE 500
 CENTENNIAL, CO 80112

A STANLEY GROUP COMPANY
 ENGINEERING, ENVIRONMENTAL AND
 CONSTRUCTION SERVICES - WORLDWIDE

DESIGNED XXXXX
 DRAWN XXXXX
 CHECKED XXXXX
 APPROVED XXXXX
 DATE 2/7/2012


Center to Grand Forks Project



COOPERATIVE, INC.

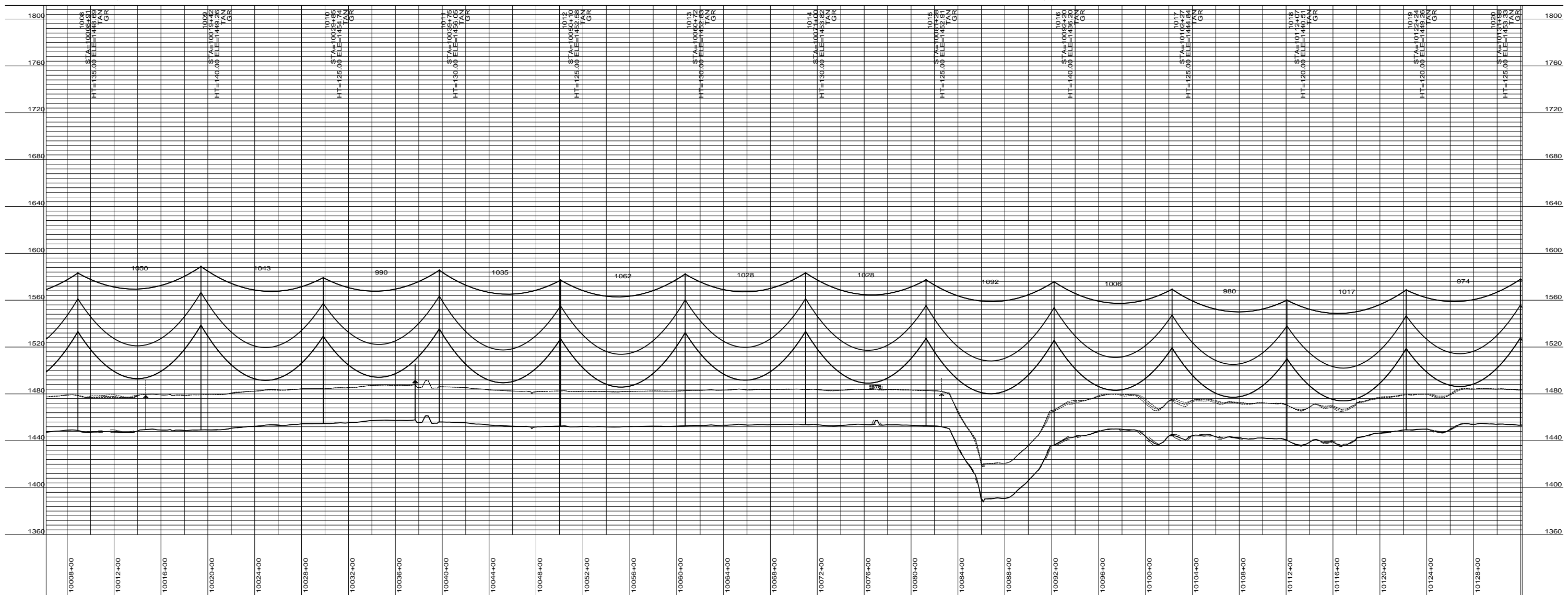
GRIGGS COUNTY

400.0 FT. HORIZ. SCALE
 40.0 FT. VERT. SCALE



55-PP-GR000-011

PRELIMINARY



DESIGN CONDITIONS:
 SHIELD _____
 20% RTS @ -20 DEGREES F, INITIAL CLEARANCE LINE: XX'

CONDUCTOR _____
 20% RTS @ -20 DEGREES F, INITIAL CLEARANCE LINE: XX'

REV	DATE	APP	DESCRIPTION	DFTR



8000 S. CHESTER STREET
 SUITE 500
 CENTENNIAL, CO 80112

A STANLEY GROUP COMPANY
 ENGINEERING, ENVIRONMENTAL AND
 CONSTRUCTION SERVICES - WORLDWIDE

DESIGNED XXXXX
 DRAWN XXXXX
 CHECKED XXXXX
 APPROVED XXXXX
 DATE 2/7/2012


Center to Grand Forks Project



COOPERATIVE, INC.

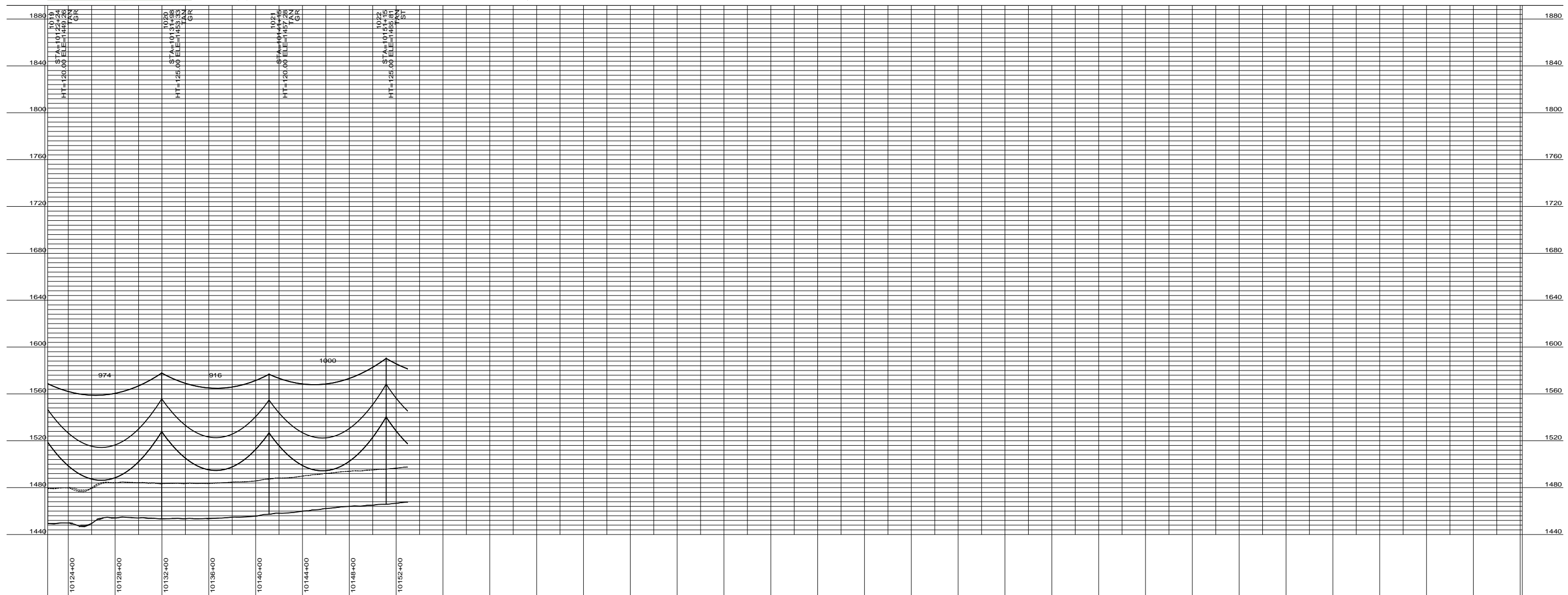
GRIGGS COUNTY

400.0 FT. — HORIZ. SCALE
 40.0 FT. — VERT. SCALE



55-PP-GR000-012

PRELIMINARY



DESIGN CONDITIONS:
 SHIELD _____
 20% RTS @ -20 DEGREES F, INITIAL CLEARANCE LINE: XX'

CONDUCTOR _____
 20% RTS @ -20 DEGREES F, INITIAL

REV	DATE	APP	DESCRIPTION	DFTR



Stanley Consultants INC.
 8000 S. CHESTER STREET
 SUITE 500
 CENTENNIAL, CO 80112

A STANLEY GROUP COMPANY
 ENGINEERING, ENVIRONMENTAL AND
 CONSTRUCTION SERVICES - WORLDWIDE

DESIGNED	XXXXX
DRAWN	XXXXX
CHECKED	XXXXX
APPROVED	XXXXX
DATE	2/7/2012


Center to Grand Forks Project



Minnkota Power
 COOPERATIVE, INC.

GRIGGS COUNTY

400.0 FT. HORIZ. SCALE
 40.0 FT. VERT. SCALE



55-PP-GR000-013