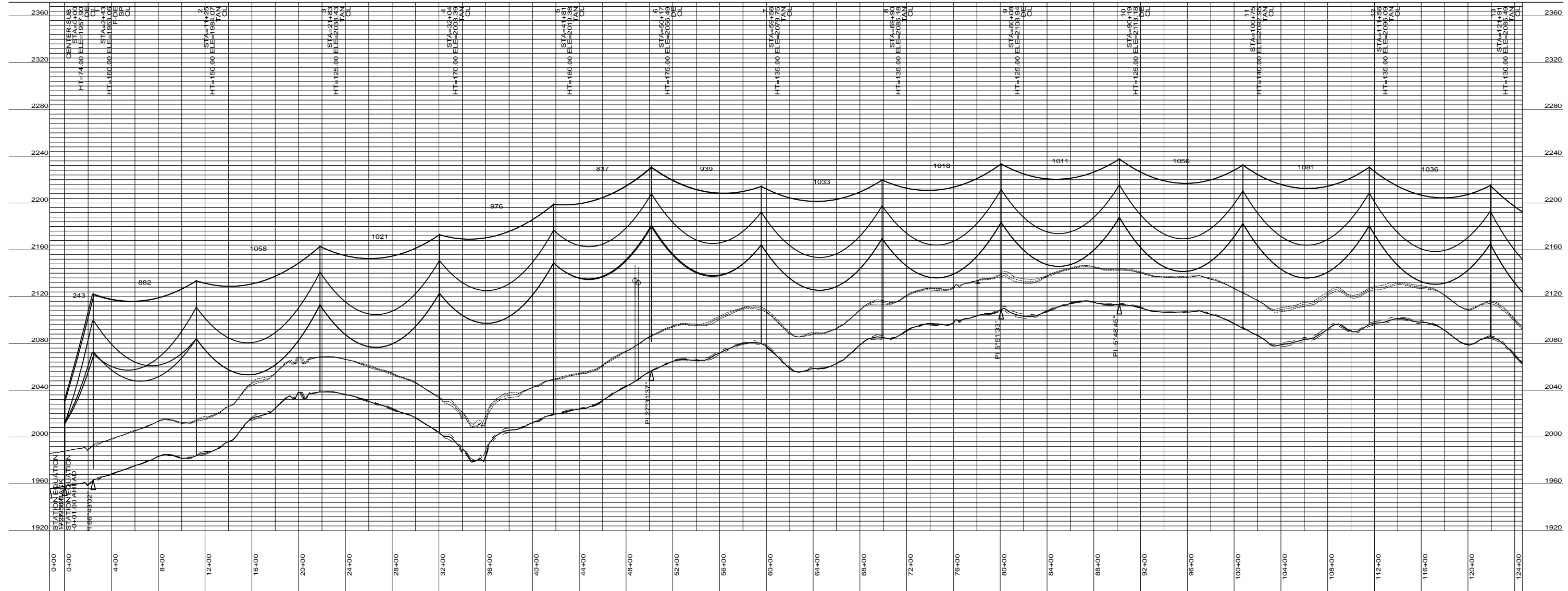


PRELIMINARY

PLS-CADD DRAWING



DESIGN CONDITIONS:  
 SHIELD \_\_\_\_\_  
 20% RTS @ -20 DEGREES F, INITIAL CLEARANCE LINE: XX'  
 CONDUCTOR \_\_\_\_\_  
 20% RTS @ -20 DEGREES F, INITIAL

REV	DATE	APP	DESCRIPTION	DFTR



**Stanley Consultants INC.**  
 8000 S. CHESTER STREET  
 SUITE 500  
 CENTENNIAL, CO 80112

A STANLEY GROUP COMPANY  
 ENGINEERING, ENVIRONMENTAL AND  
 CONSTRUCTION SERVICES - WORLDWIDE

DESIGNED	XXXXX
DRAWN	XXXXX
CHECKED	XXXXX
APPROVED	XXXXX
DATE	2/6/2012


**Center to Grand Forks Project**



COOPERATIVE, INC.

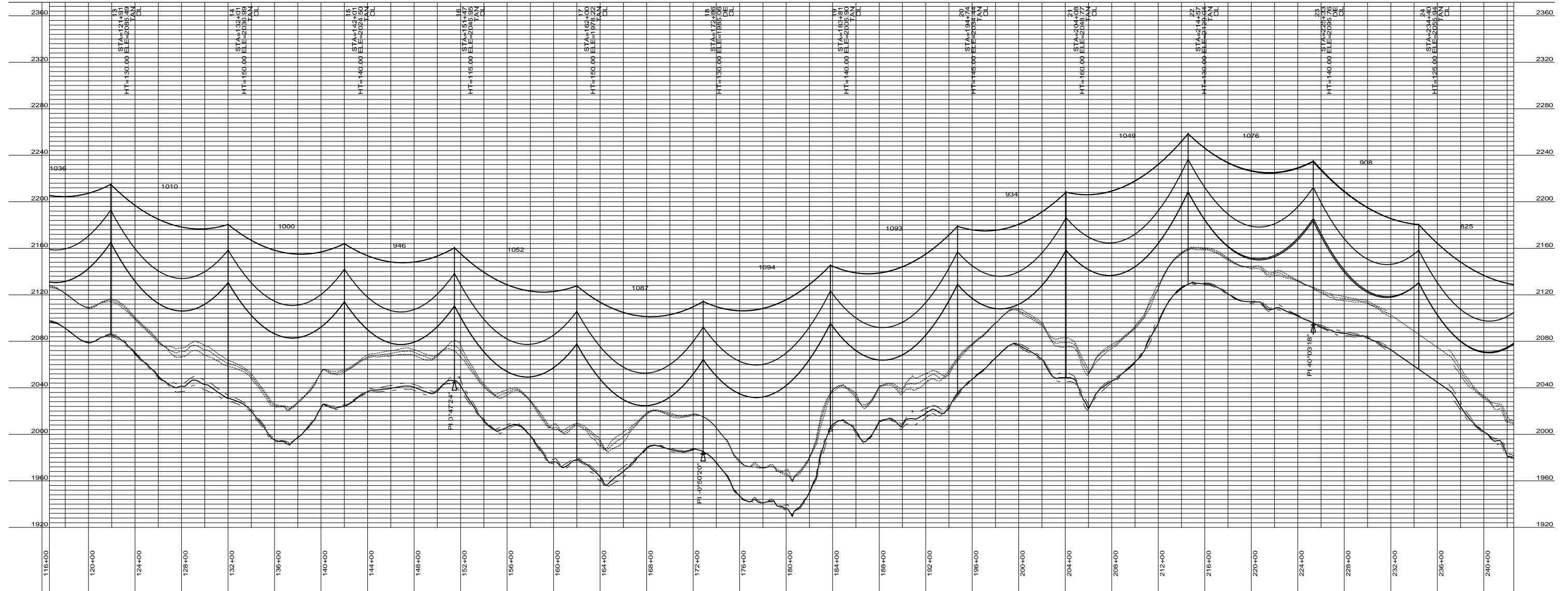
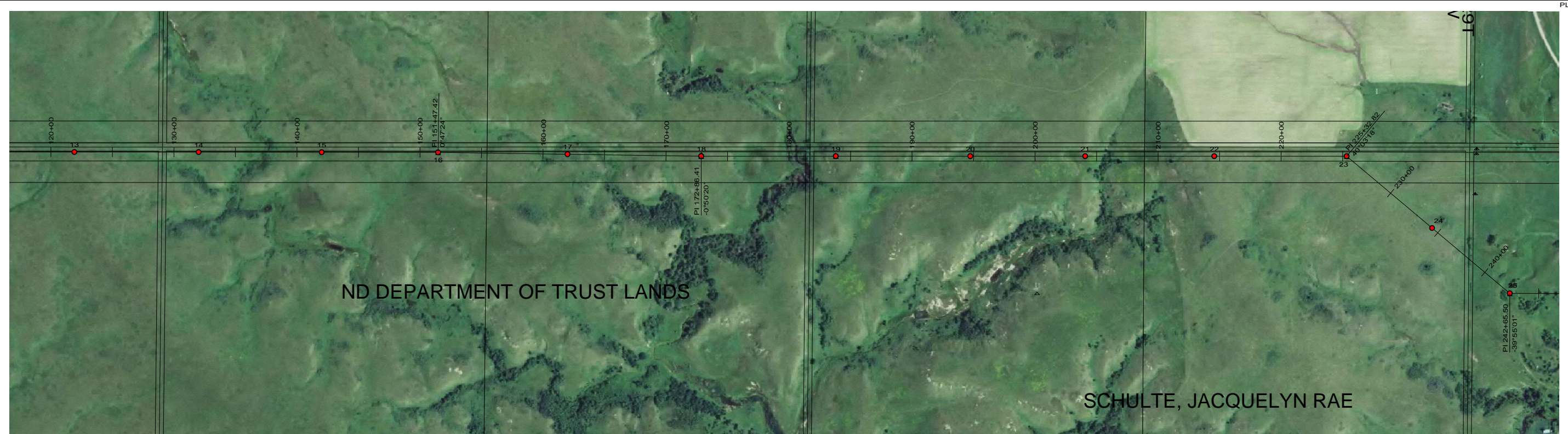
OLIVER-BURLEIGH COUNTY

400.0 FT. HORIZ. SCALE  
 40.0 FT. VERT. SCALE



55-PP-OL000-001

PRELIMINARY



DESIGN CONDITIONS:  
 SHIELD \_\_\_\_\_  
 20% RTS @ -20 DEGREES F, INITIAL CLEARANCE LINE: XX'

CONDUCTOR \_\_\_\_\_  
 20% RTS @ -20 DEGREES F, INITIAL

REV	DATE	APP	DESCRIPTION	DFTR

8000 S. CHESTER STREET  
 SUITE 500  
 CENTENNIAL, CO 80112

A STANLEY GROUP COMPANY  
 ENGINEERING, ENVIRONMENTAL AND  
 CONSTRUCTION SERVICES - WORLDWIDE

DESIGNED XXXXX  
 DRAWN XXXXX  
 CHECKED XXXXX  
 APPROVED XXXXX  
 DATE 2/6/2012

**Center to Grand Forks Project**

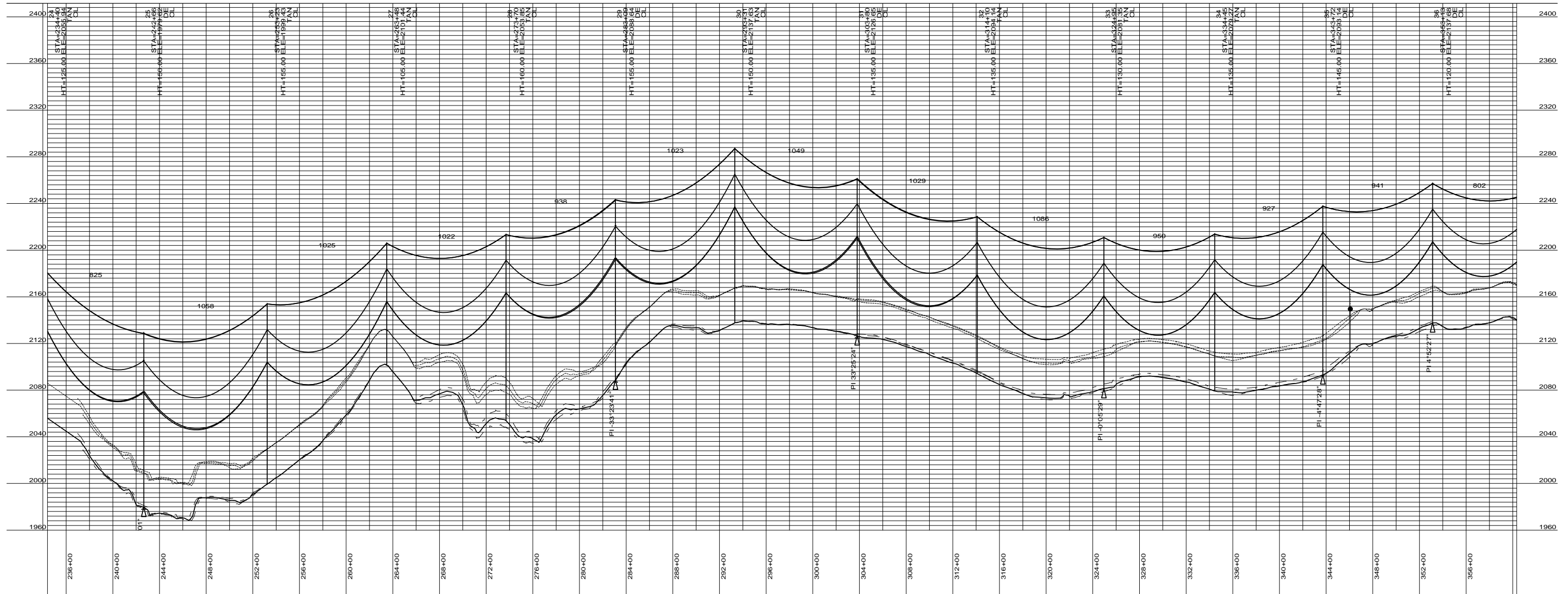
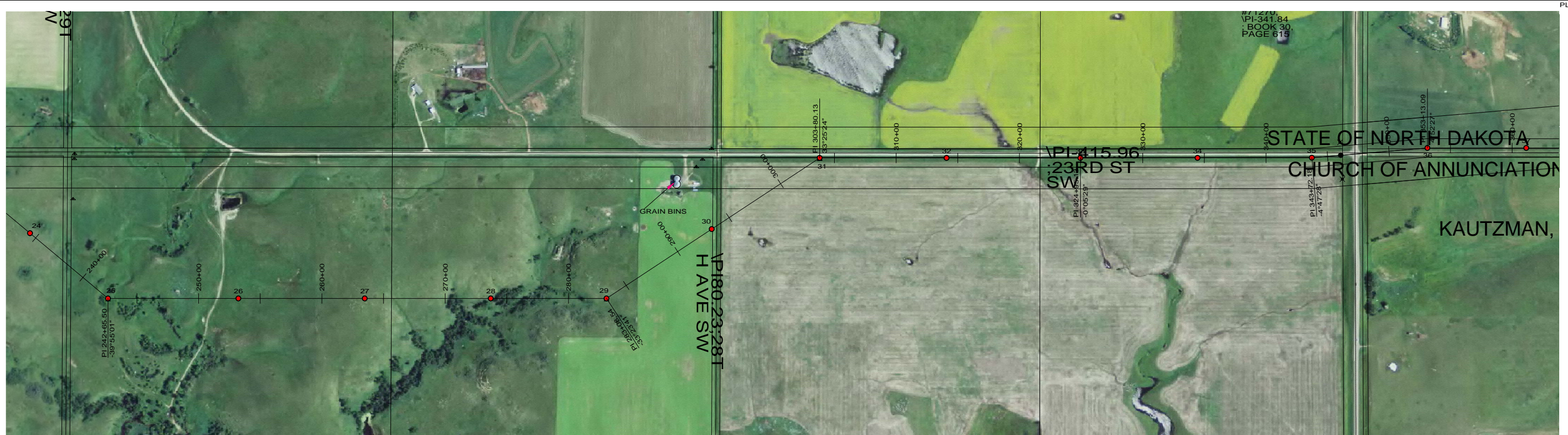
COOPERATIVE, INC.

OLIVER-BURLEIGH COUNTY

400.0 FT. HORIZ. SCALE  
 40.0 FT. VERT. SCALE

55-PP-OL000-002

PRELIMINARY



DESIGN CONDITIONS:  
 SHIELD \_\_\_\_\_  
 20% RTS @ -20 DEGREES F, INITIAL CLEARANCE LINE: XX'

CONDUCTOR \_\_\_\_\_  
 20% RTS @ -20 DEGREES F, INITIAL

REV	DATE	APP	DESCRIPTION	DFTR



**Stanley Consultants INC.**

8000 S. CHESTER STREET  
 SUITE 500  
 CENTENNIAL, CO 80112

A STANLEY GROUP COMPANY  
 ENGINEERING, ENVIRONMENTAL AND  
 CONSTRUCTION SERVICES - WORLDWIDE

DESIGNED XXXXX  
 DRAWN XXXXX  
 CHECKED XXXXX  
 APPROVED XXXXX  
 DATE 2/6/2012

**Center to Grand Forks Project**



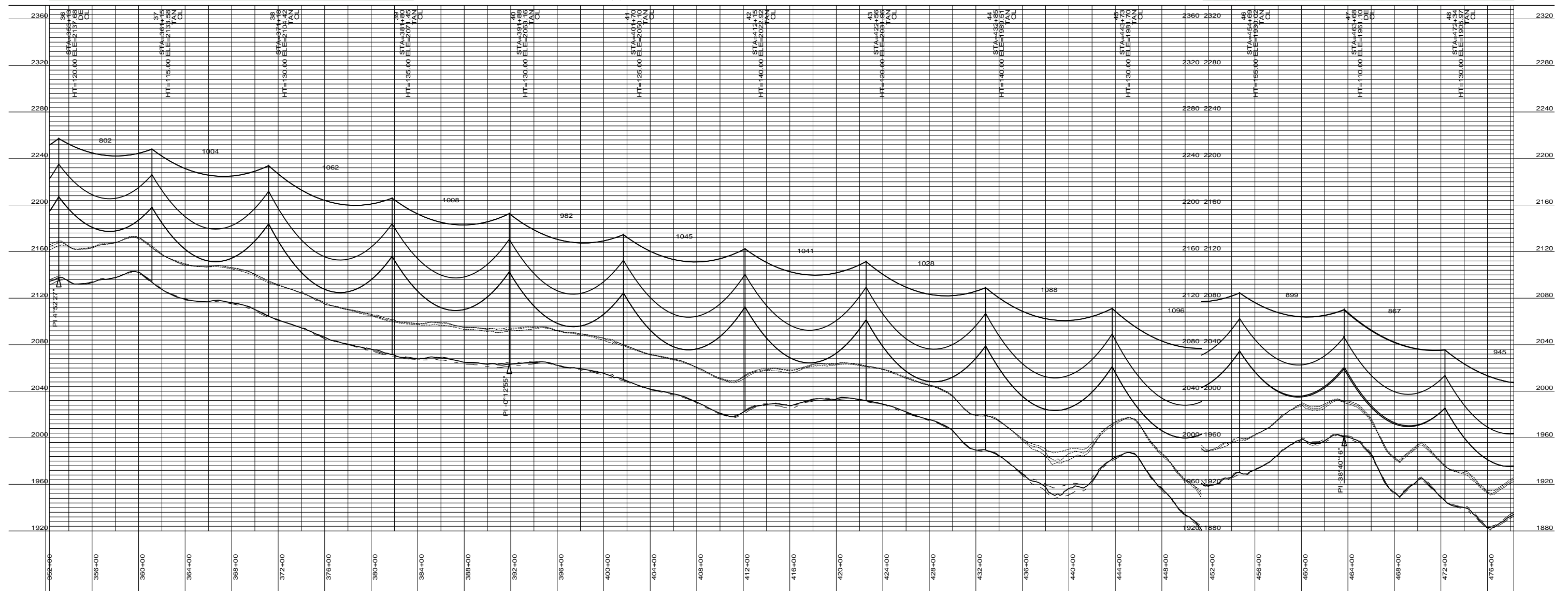
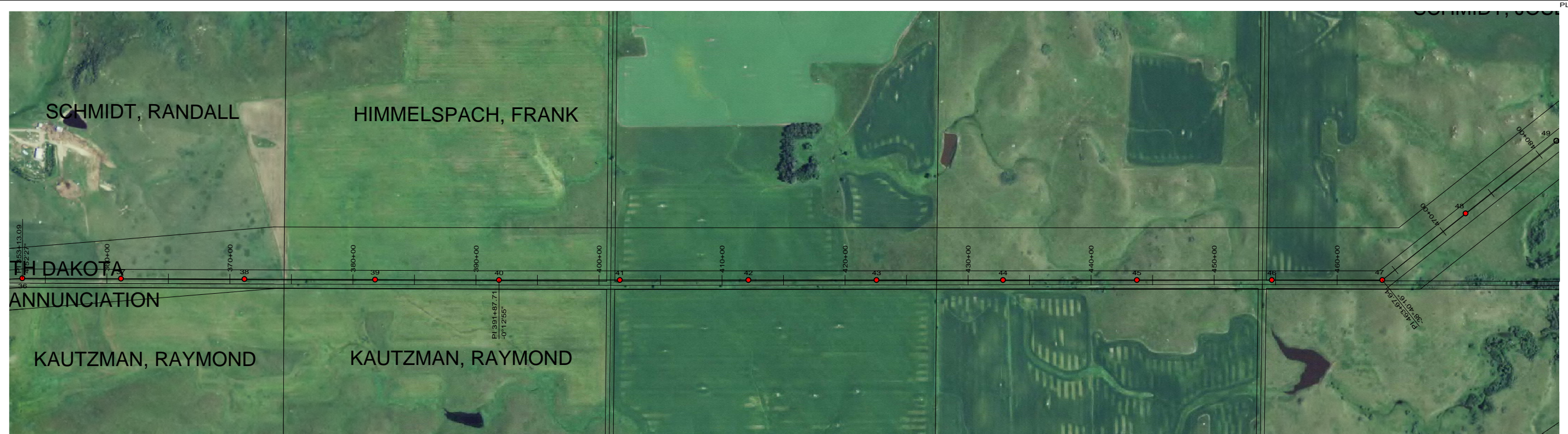
COOPERATIVE, INC.

OLIVER-BURLEIGH COUNTY

400.0 FT. ———— HORIZ. SCALE  
 40.0 FT. ———— VERT. SCALE

55-PP-OL000-003

PRELIMINARY



DESIGN CONDITIONS:  
 SHIELD \_\_\_\_\_  
 20% RTS @ -20 DEGREES F, INITIAL CLEARANCE LINE: XX'

CONDUCTOR \_\_\_\_\_  
 20% RTS @ -20 DEGREES F, INITIAL

REV	DATE	APP	DESCRIPTION	DFTR



**Stanley Consultants INC.**  
 A STANLEY GROUP COMPANY  
 ENGINEERING, ENVIRONMENTAL AND  
 CONSTRUCTION SERVICES - WORLDWIDE

8000 S. CHESTER STREET  
 SUITE 500  
 CENTENNIAL, CO 80112

DESIGNED XXXXX  
 DRAWN XXXXX  
 CHECKED XXXXX  
 APPROVED XXXXX  
 DATE 2/6/2012


**Center to Grand Forks Project**



COOPERATIVE, INC.

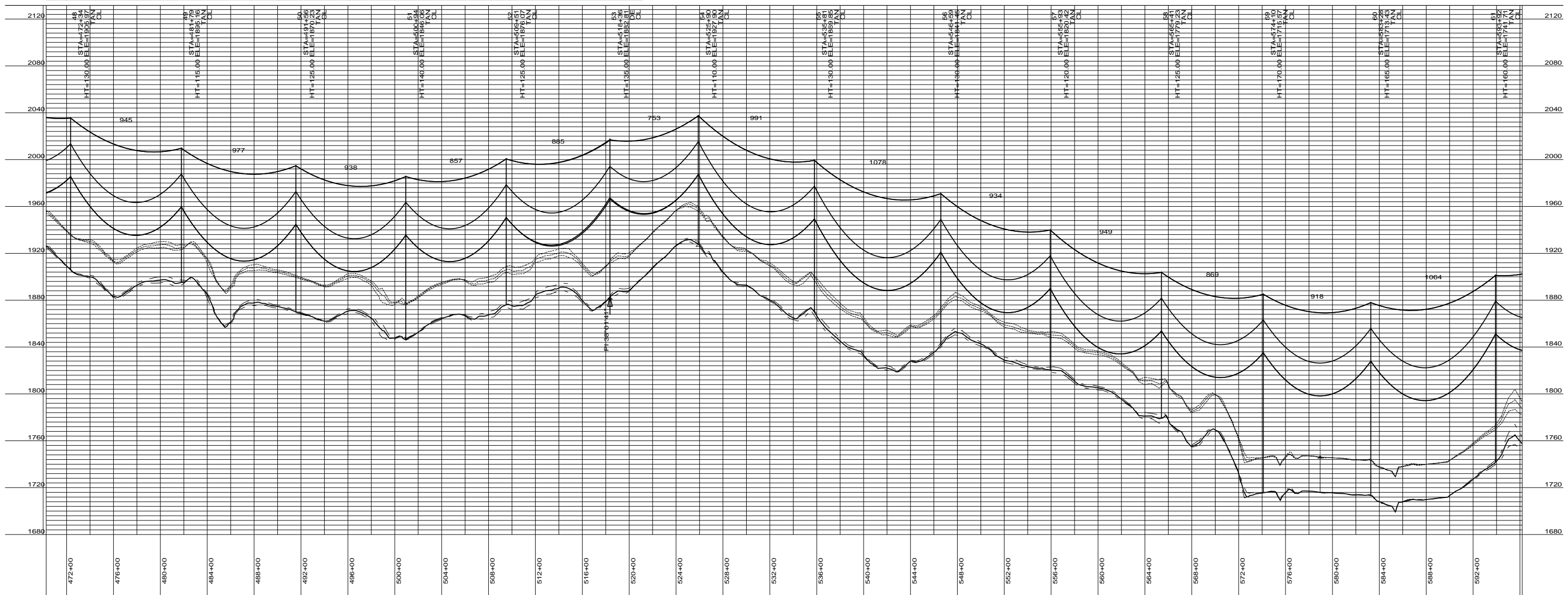
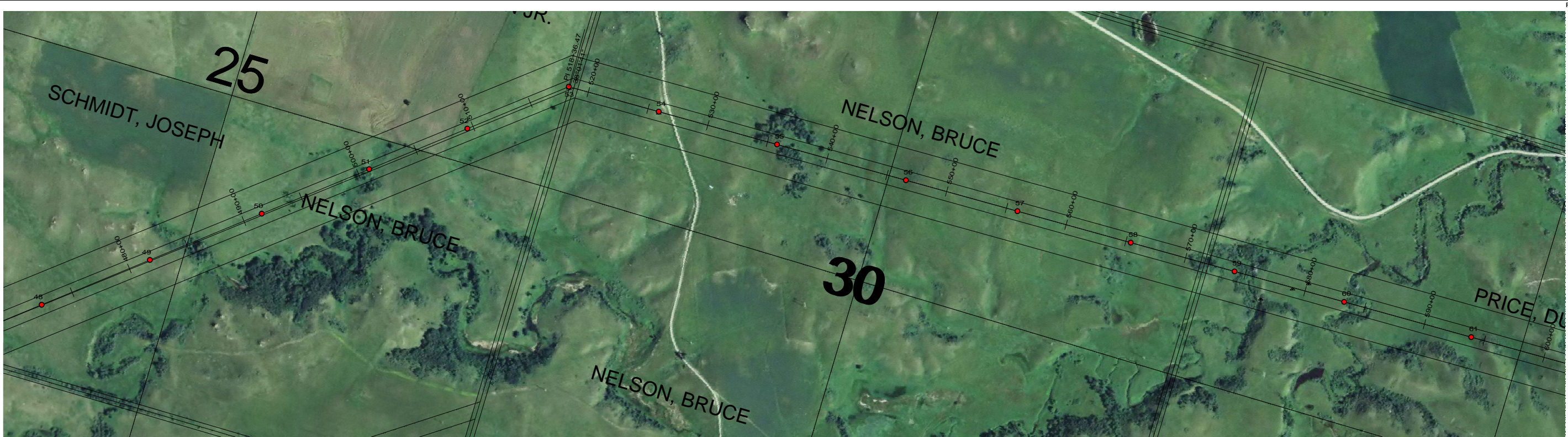
OLIVER-BURLEIGH COUNTY

400.0 FT. HORIZ. SCALE  
 40.0 FT. VERT. SCALE



55-PP-OL000-004

PRELIMINARY



DESIGN CONDITIONS:  
 SHIELD \_\_\_\_\_  
 20% RTS @ -20 DEGREES F, INITIAL  
 CLEARANCE LINE: XX'

CONDUCTOR \_\_\_\_\_  
 20% RTS @ -20 DEGREES F, INITIAL

REV	DATE	APP	DESCRIPTION	DFTR

8000 S. CHESTER STREET  
 SUITE 500  
 CENTENNIAL, CO 80112

A STANLEY GROUP COMPANY  
 ENGINEERING, ENVIRONMENTAL AND  
 CONSTRUCTION SERVICES - WORLDWIDE

DESIGNED XXXXX  
 DRAWN XXXXX  
 CHECKED XXXXX  
 APPROVED XXXXX  
 DATE 2/6/2012

**Center to Grand Forks Project**

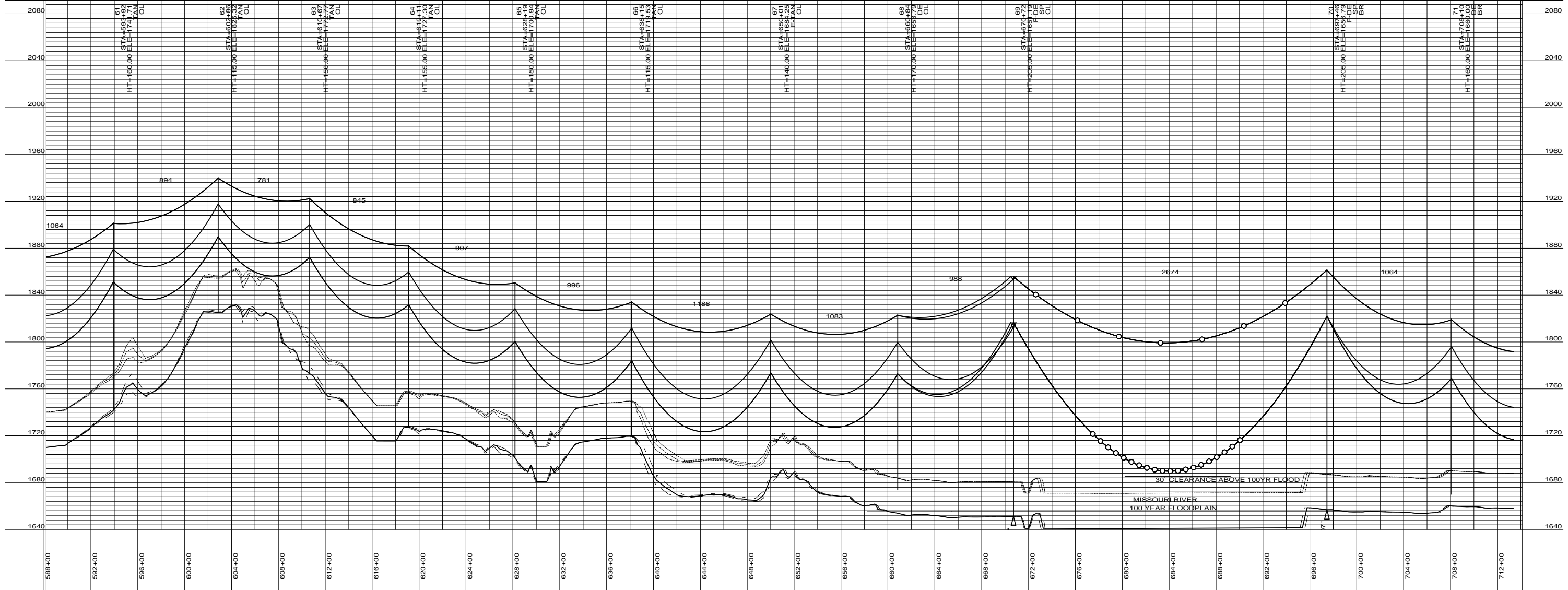
COOPERATIVE, INC.

OLIVER-BURLEIGH COUNTY

400.0 FT. HORIZ. SCALE  
 40.0 FT. VERT. SCALE

55-PP-OL000-005

PRELIMINARY



DESIGN CONDITIONS:  
 SHIELD \_\_\_\_\_  
 20% RTS @ -20 DEGREES F, INITIAL CLEARANCE LINE: XX'

CONDUCTOR \_\_\_\_\_  
 20% RTS @ -20 DEGREES F, INITIAL CLEARANCE LINE: XX'

REV	DATE	APP	DESCRIPTION	DFTR

8000 S. CHESTER STREET  
 SUITE 500  
 CENTENNIAL, CO 80112

A STANLEY GROUP COMPANY  
 ENGINEERING, ENVIRONMENTAL AND  
 CONSTRUCTION SERVICES - WORLDWIDE

DESIGNED XXXXX  
 DRAWN XXXXX  
 CHECKED XXXXX  
 APPROVED XXXXX  
 DATE 2/6/2012

**Center to Grand Forks Project**

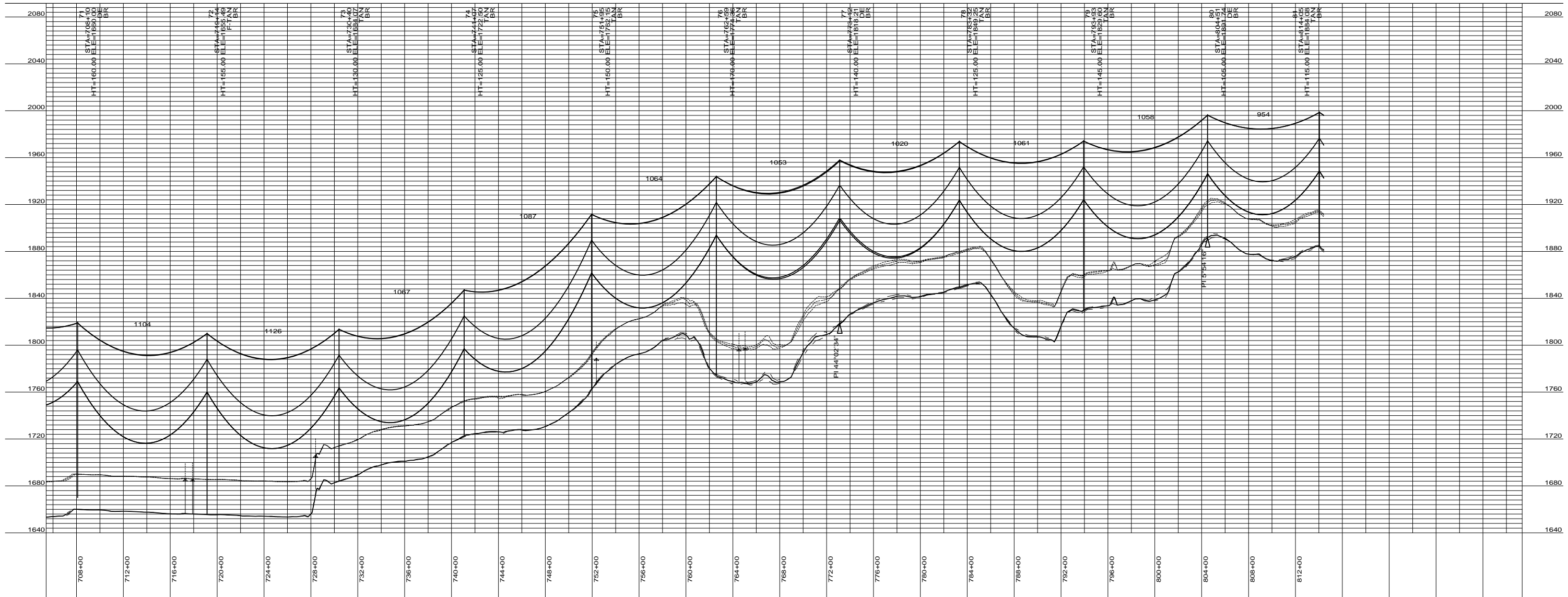
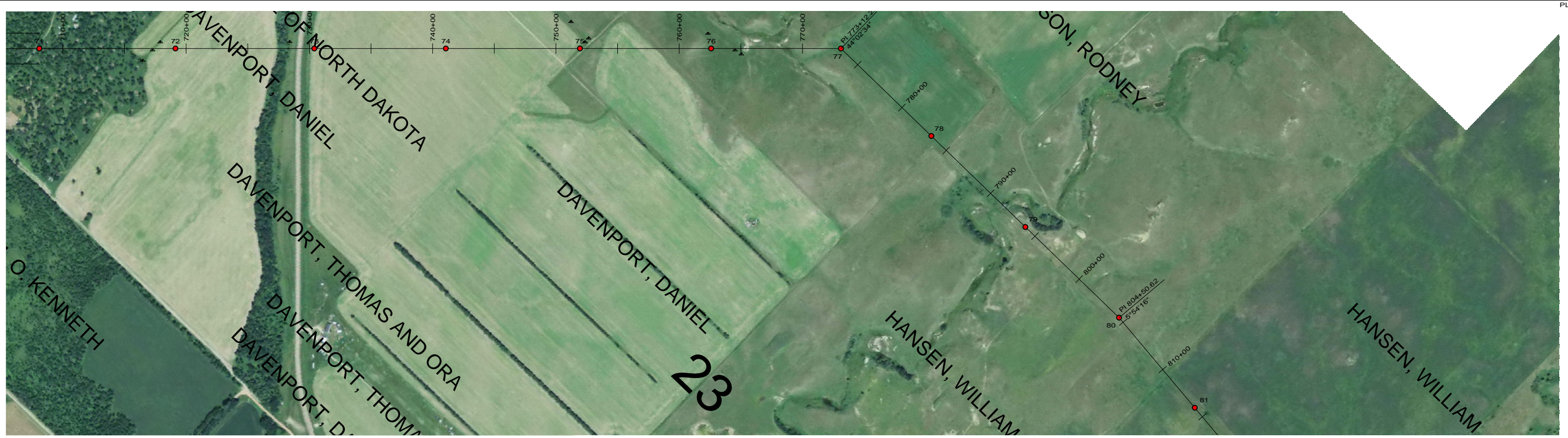
COOPERATIVE, INC.

OLIVER-BURLEIGH COUNTY

400.0 FT. HORIZ. SCALE  
 40.0 FT. VERT. SCALE

55-PP-OL000-006

PRELIMINARY



DESIGN CONDITIONS:  
 SHIELD \_\_\_\_\_  
 20% RTS @ -20 DEGREES F, INITIAL CLEARANCE LINE: XX'  
 CONDUCTOR \_\_\_\_\_  
 20% RTS @ -20 DEGREES F, INITIAL

REV	DATE	APP	DESCRIPTION	DFTR

8000 S. CHESTER STREET  
 SUITE 500  
 CENTENNIAL, CO 80112

A STANLEY GROUP COMPANY  
 ENGINEERING, ENVIRONMENTAL AND  
 CONSTRUCTION SERVICES - WORLDWIDE

DESIGNED	XXXXX
DRAWN	XXXXX
CHECKED	XXXXX
APPROVED	XXXXX
DATE	2/6/2012

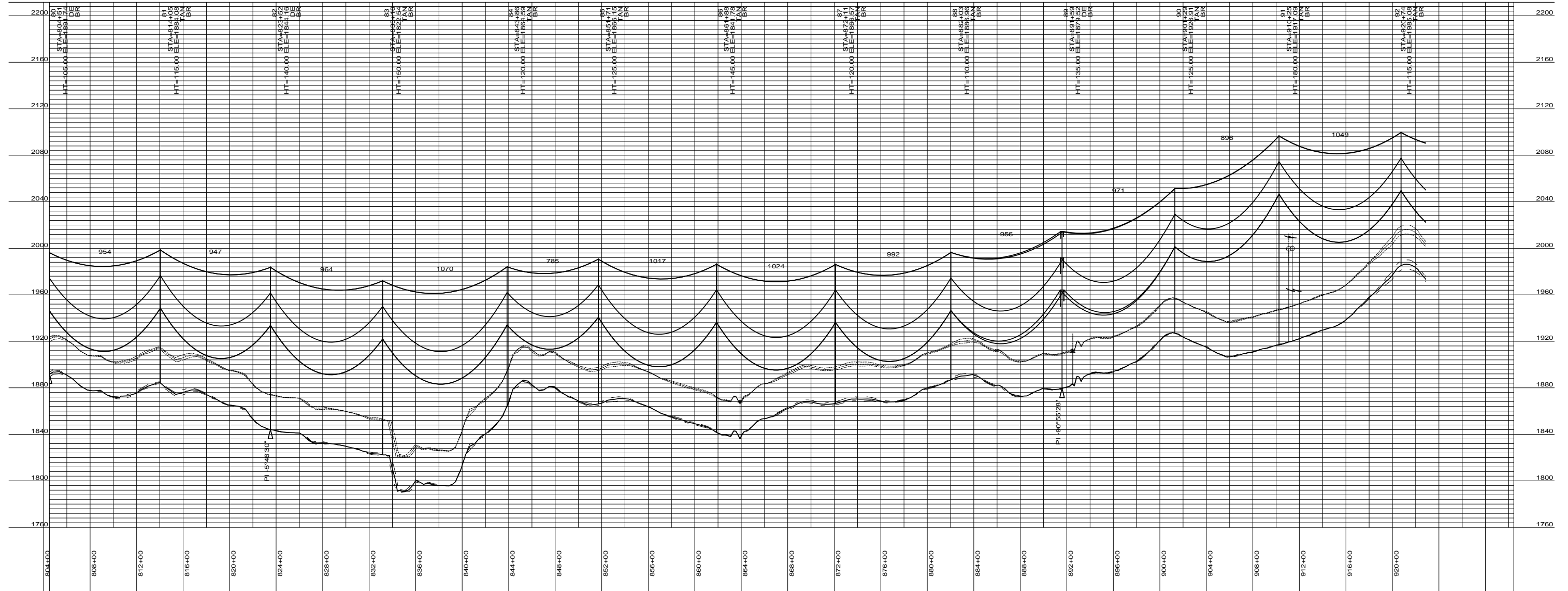
**Center to Grand Forks Project**

COOPERATIVE, INC.

OLIVER-BURLEIGH COUNTY

400.0 FT. HORIZ. SCALE  
 40.0 FT. VERT. SCALE

PRELIMINARY



DESIGN CONDITIONS:  
 SHIELD \_\_\_\_\_  
 20% RTS @ -20 DEGREES F, INITIAL CLEARANCE LINE: XX'

CONDUCTOR \_\_\_\_\_  
 20% RTS @ -20 DEGREES F, INITIAL CLEARANCE LINE: XX'

REV	DATE	APP	DESCRIPTION	DFTR

8000 S. CHESTER STREET  
 SUITE 500  
 CENTENNIAL, CO 80112

A STANLEY GROUP COMPANY  
 ENGINEERING, ENVIRONMENTAL AND  
 CONSTRUCTION SERVICES - WORLDWIDE

DESIGNED XXXXX  
 DRAWN XXXXX  
 CHECKED XXXXX  
 APPROVED XXXXX  
 DATE 2/6/2012

**Center to Grand Forks Project**

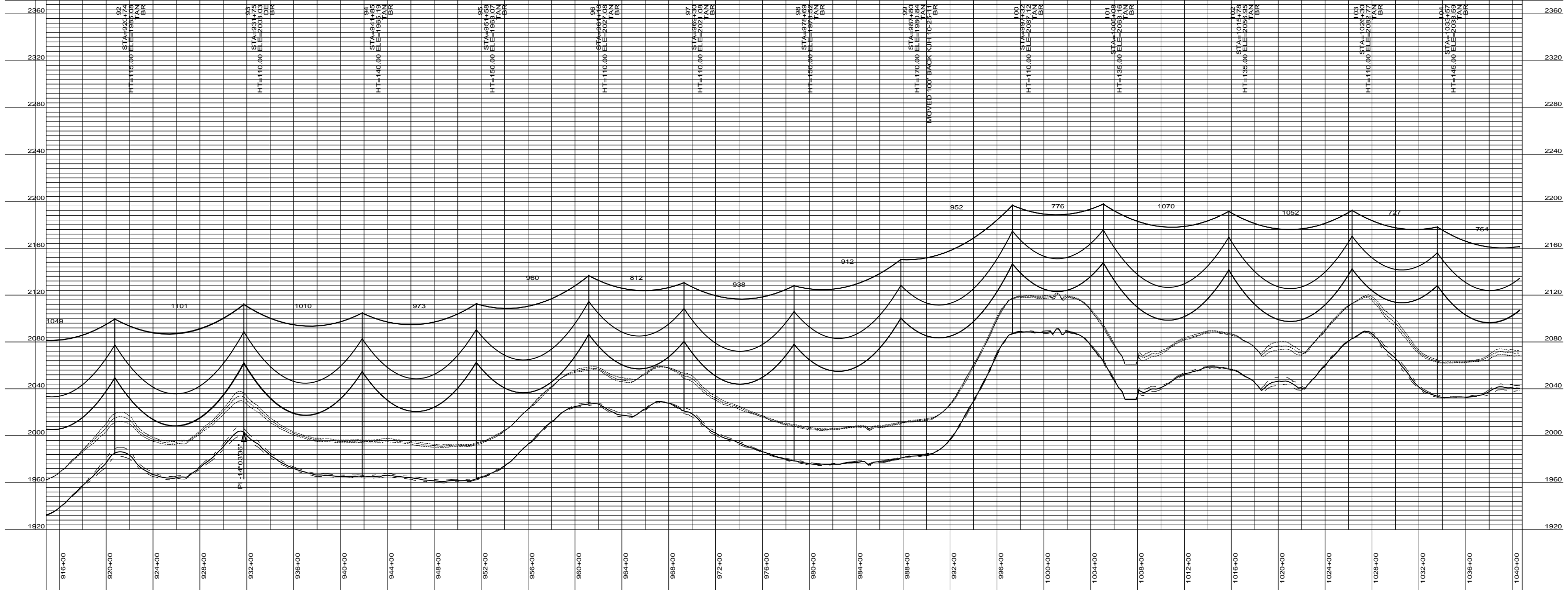
COOPERATIVE, INC.

OLIVER-BURLEIGH COUNTY

400.0 FT. HORIZ. SCALE  
 40.0 FT. VERT. SCALE

55-PP-BR000-008

PRELIMINARY



DESIGN CONDITIONS:  
 SHIELD \_\_\_\_\_  
 20% RTS @ -20 DEGREES F, INITIAL CLEARANCE LINE: XX'  
 CONDUCTOR \_\_\_\_\_  
 20% RTS @ -20 DEGREES F, INITIAL

REV	DATE	APP	DESCRIPTION	DFTR

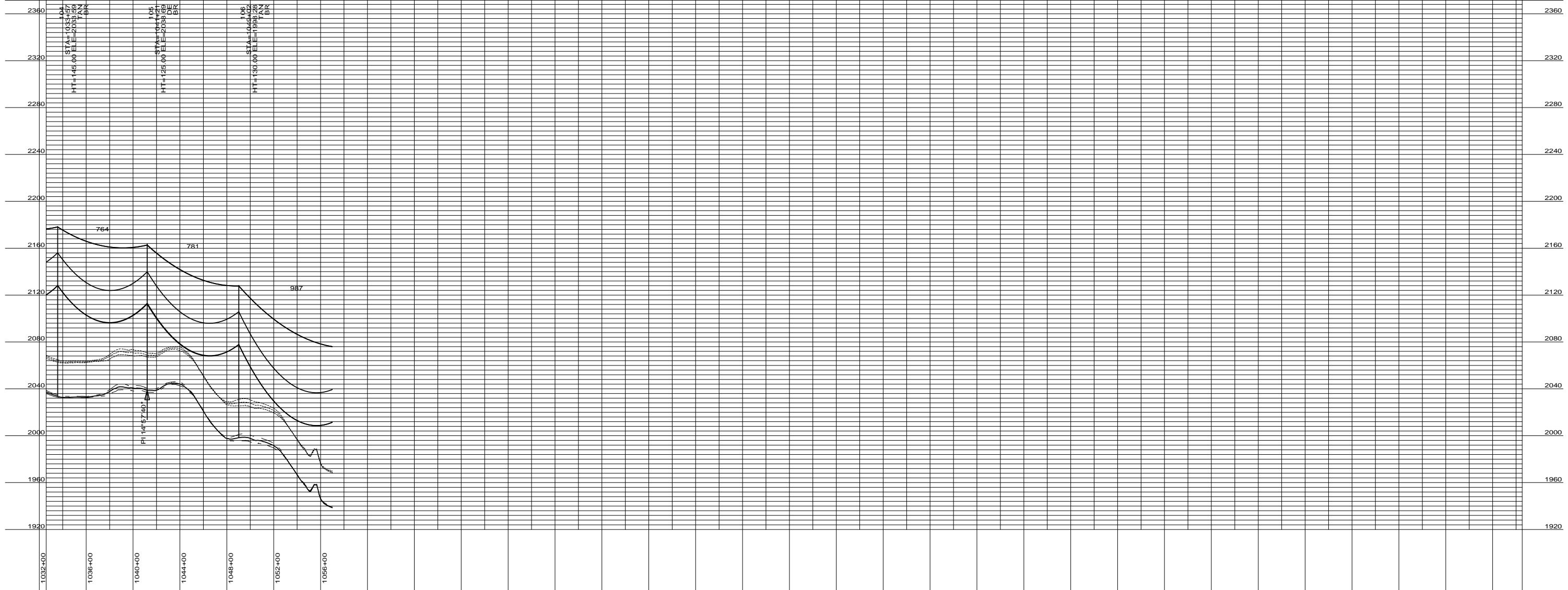
**Stanley Consultants INC.**  
 8000 S. CHESTER STREET  
 SUITE 500  
 CENTENNIAL, CO 80112  
 A STANLEY GROUP COMPANY  
 ENGINEERING, ENVIRONMENTAL AND  
 CONSTRUCTION SERVICES - WORLDWIDE

DESIGNED XXXXX  
 DRAWN XXXXX  
 CHECKED XXXXX  
 APPROVED XXXXX  
 DATE 2/6/2012

**Center to Grand Forks Project**  
**Minnkota Power**  
 COOPERATIVE, INC.

OLIVER-BURLEIGH COUNTY  
 400.0 FT. HORIZ. SCALE  
 40.0 FT. VERT. SCALE  
 55-PP-BR000-009

PRELIMINARY



DESIGN CONDITIONS:  
 SHIELD \_\_\_\_\_  
 20% RTS @ -20 DEGREES F, INITIAL CLEARANCE LINE: XX'

CONDUCTOR \_\_\_\_\_  
 20% RTS @ -20 DEGREES F, INITIAL

REV	DATE	APP	DESCRIPTION	DFTR



**Stanley Consultants INC.**  
 A STANLEY GROUP COMPANY  
 ENGINEERING, ENVIRONMENTAL AND  
 CONSTRUCTION SERVICES - WORLDWIDE

8000 S. CHESTER STREET  
 SUITE 500  
 CENTENNIAL, CO 80112

DESIGNED	XXXXX
DRAWN	XXXXX
CHECKED	XXXXX
APPROVED	XXXXX
DATE	2/6/2012

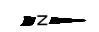
**Center to Grand Forks Project**



**Minnkota Power**  
 COOPERATIVE, INC.

OLIVER-BURLEIGH COUNTY

400.0 FT. HORIZ. SCALE  
 40.0 FT. VERT. SCALE



55-PP-BR000-010