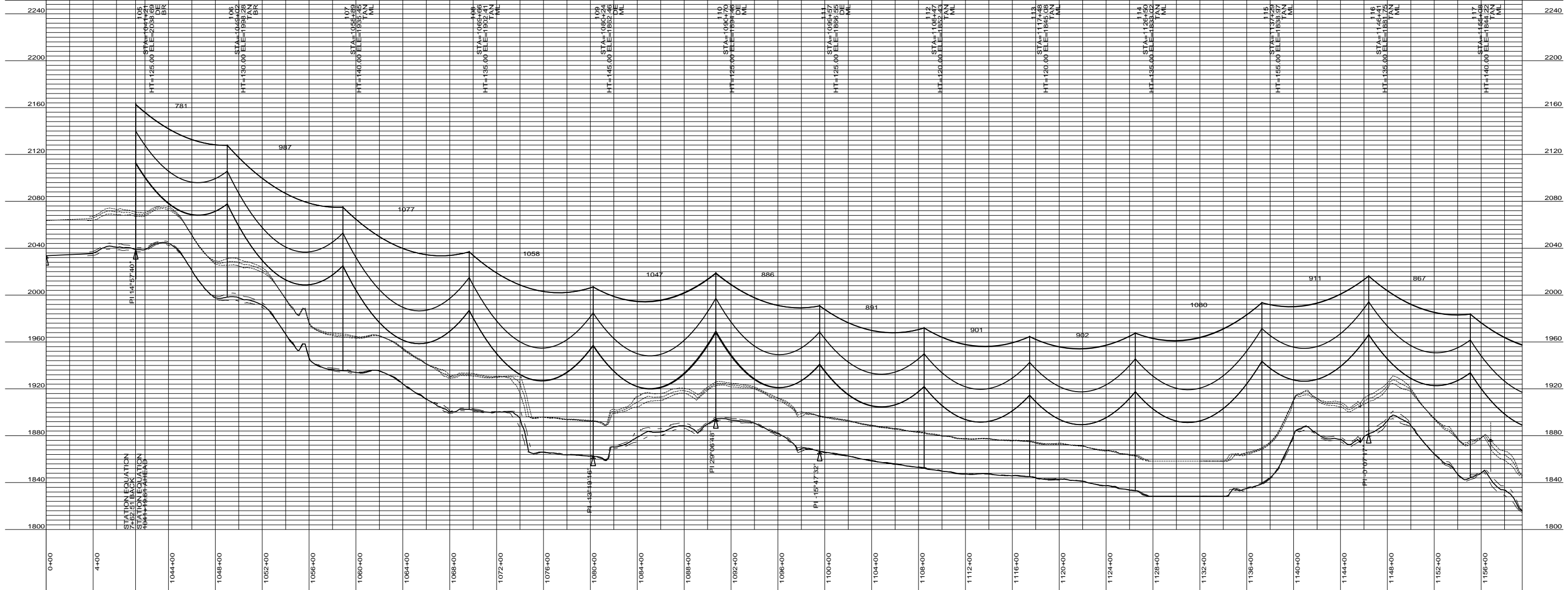


PRELIMINARY



DESIGN CONDITIONS:  
 SHIELD \_\_\_\_\_  
 20% RTS @ -20 DEGREES F, INITIAL CLEARANCE LINE: XX'  
 CONDUCTOR \_\_\_\_\_  
 20% RTS @ -20 DEGREES F, INITIAL

REV	DATE	APP	DESCRIPTION	DFTR

**Stanley Consultants INC.**  
 8000 S. CHESTER STREET  
 SUITE 500  
 CENTENNIAL, CO 80112

A STANLEY GROUP COMPANY  
 ENGINEERING, ENVIRONMENTAL AND  
 CONSTRUCTION SERVICES - WORLDWIDE

DESIGNED	XXXXX
DRAWN	XXXXX
CHECKED	XXXXX
APPROVED	XXXXX
DATE	2/6/2012

**Center to Grand Forks Project**

**Minnkota Power**  
 COOPERATIVE, INC.

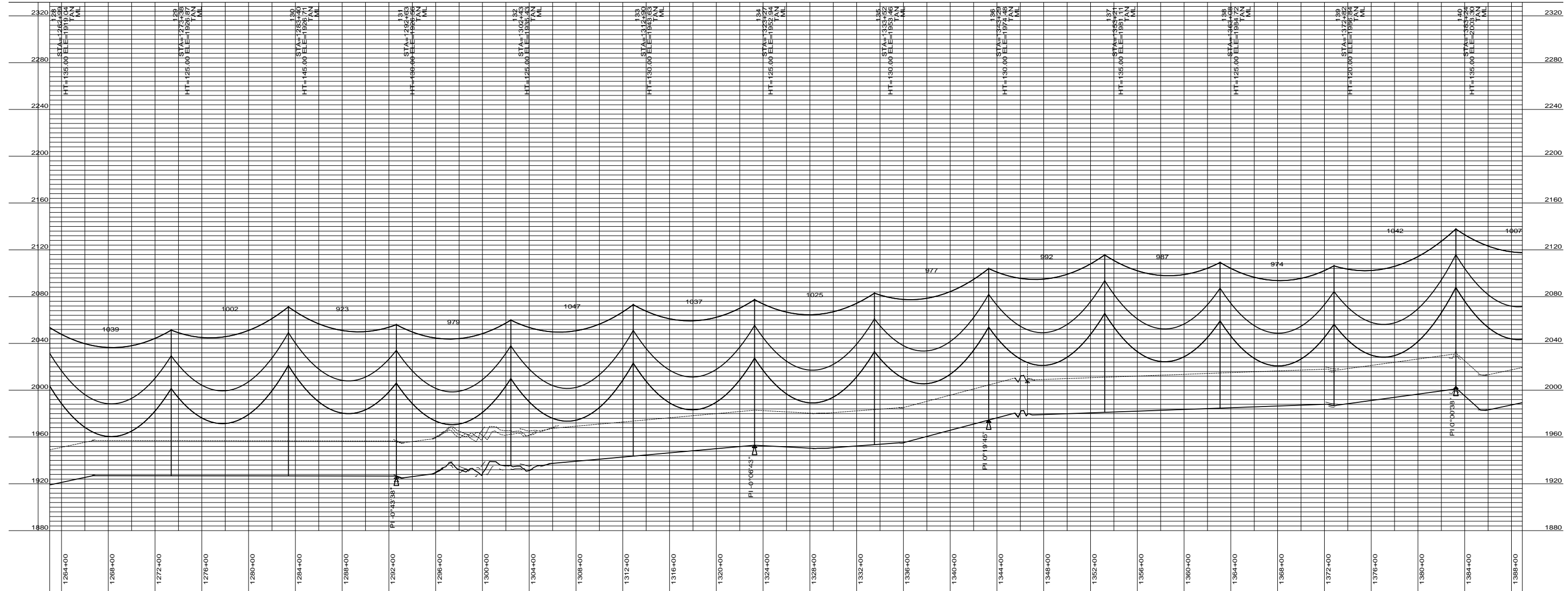
**MCLEAN COUNTY**

400.0 FT. HORIZ. SCALE  
 40.0 FT. VERT. SCALE

55-PP-ML000-001



PRELIMINARY



DESIGN CONDITIONS:  
 SHIELD \_\_\_\_\_  
 20% RTS @ -20 DEGREES F, INITIAL CLEARANCE LINE: XX'  
 CONDUCTOR \_\_\_\_\_  
 20% RTS @ -20 DEGREES F, INITIAL

REV	DATE	APP	DESCRIPTION	DFTR

8000 S. CHESTER STREET  
 SUITE 500  
 CENTENNIAL, CO 80112

A STANLEY GROUP COMPANY  
 ENGINEERING, ENVIRONMENTAL AND  
 CONSTRUCTION SERVICES - WORLDWIDE

DESIGNED XXXXX  
 DRAWN XXXXX  
 CHECKED XXXXX  
 APPROVED XXXXX  
 DATE 2/6/2012

**Center to Grand Forks Project**

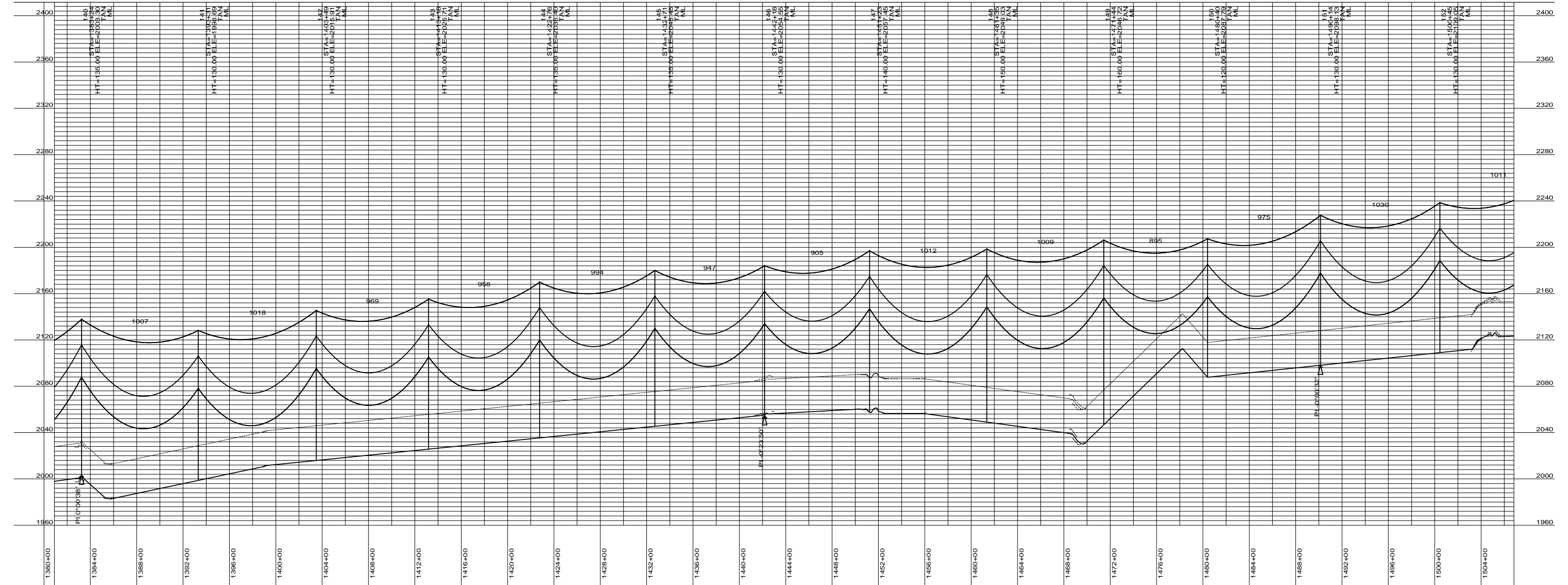
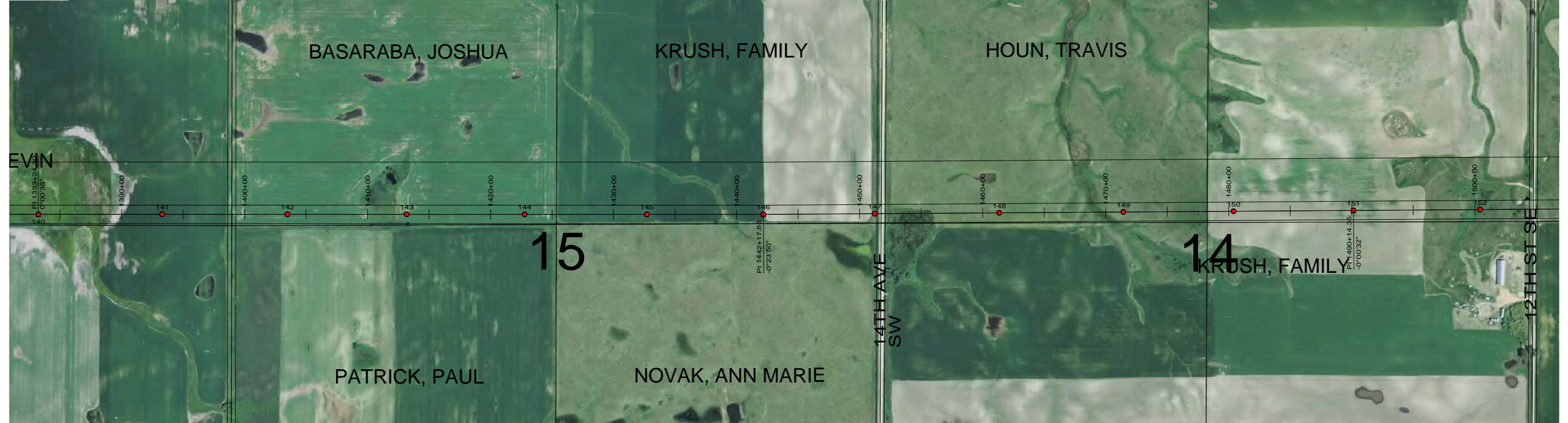
COOPERATIVE, INC.

**MCLEAN COUNTY**

400.0 FT. HORIZ. SCALE  
 40.0 FT. VERT. SCALE

55-PP-ML000-003

PRELIMINARY



DESIGN CONDITIONS:  
 SHIELD \_\_\_\_\_  
 20% RTS @ -20 DEGREES F, INITIAL CLEARANCE LINE: XX'

CONDUCTOR \_\_\_\_\_  
 20% RTS @ -20 DEGREES F, INITIAL CLEARANCE LINE: XX'

REV	DATE	APP	DESCRIPTION	DFTR

8000 S. CHESTER STREET  
 SUITE 500  
 CENTENNIAL, CO 80112

A STANLEY GROUP COMPANY  
 ENGINEERING, ENVIRONMENTAL AND  
 CONSTRUCTION SERVICES - WORLDWIDE

DESIGNED	XXXXX
DRAWN	XXXXX
CHECKED	XXXXX
APPROVED	XXXXX
DATE	2/6/2012

**Center to Grand Forks Project**

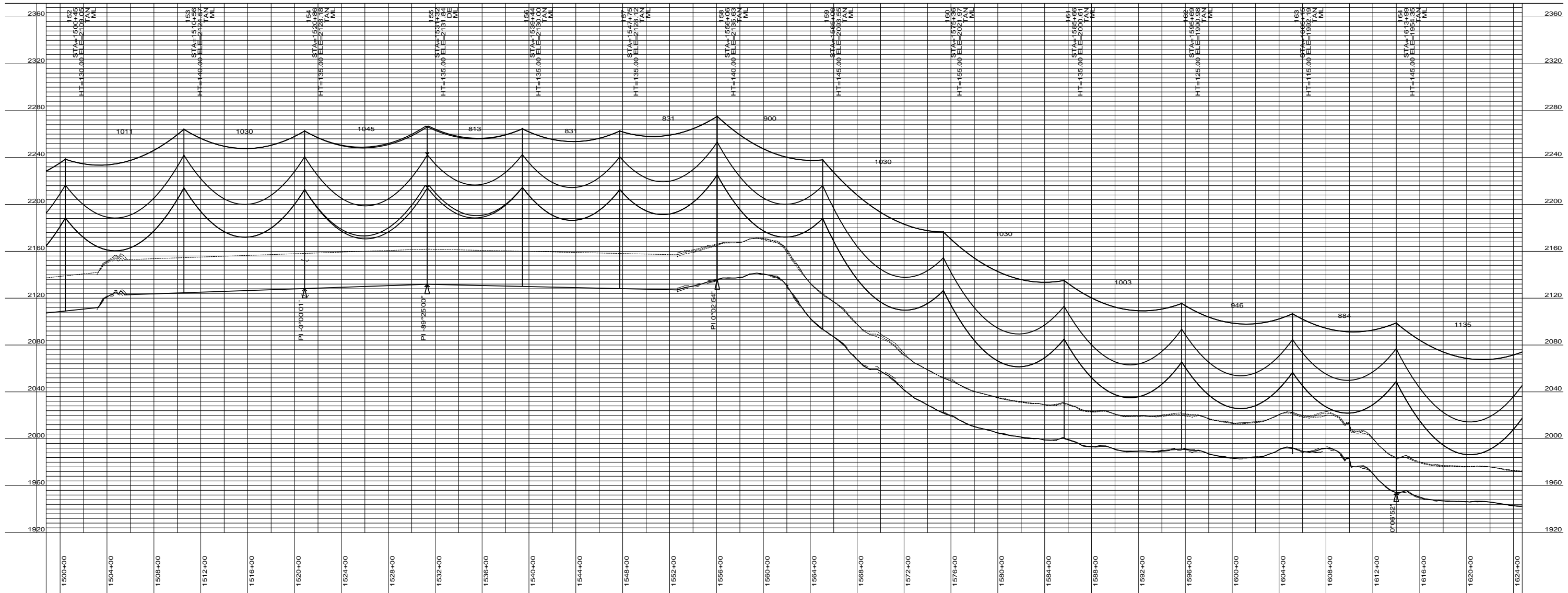
COOPERATIVE, INC.

MCLEAN COUNTY

400.0 FT. HORIZ. SCALE  
 40.0 FT. VERT. SCALE

55-PP-ML000-004

PRELIMINARY



DESIGN CONDITIONS:  
 SHIELD \_\_\_\_\_  
 20% RTS @ -20 DEGREES F, INITIAL CLEARANCE LINE: XX'  
 CONDUCTOR \_\_\_\_\_  
 20% RTS @ -20 DEGREES F, INITIAL



Stanley Consultants INC.

8000 S. CHESTER STREET  
 SUITE 500  
 CENTENNIAL, CO 80112

A STANLEY GROUP COMPANY  
 ENGINEERING, ENVIRONMENTAL AND  
 CONSTRUCTION SERVICES - WORLDWIDE

DESIGNED XXXXX  
 DRAWN XXXXX  
 CHECKED XXXXX  
 APPROVED XXXXX  
 DATE 2/6/2012

Center to Grand Forks Project



MCLEAN COUNTY

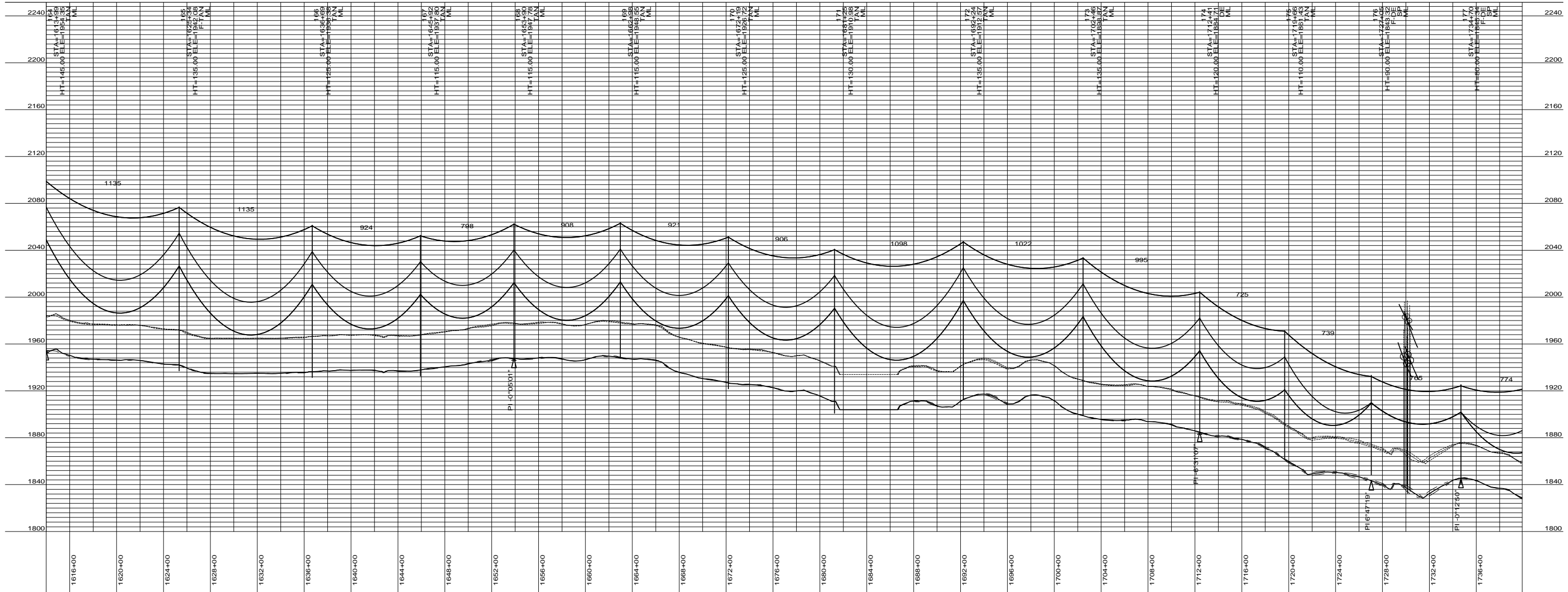
400.0 FT. HORIZ. SCALE  
 40.0 FT. VERT. SCALE



55-PP-ML000-005

REV	DATE	APP	DESCRIPTION	DFTR

PRELIMINARY



DESIGN CONDITIONS:  
 SHIELD \_\_\_\_\_  
 20% RTS @ -20 DEGREES F, INITIAL CLEARANCE LINE: XX'  
 CONDUCTOR \_\_\_\_\_  
 20% RTS @ -20 DEGREES F, INITIAL

REV	DATE	APP	DESCRIPTION	DFTR

8000 S. CHESTER STREET  
 SUITE 500  
 CENTENNIAL, CO 80112

A STANLEY GROUP COMPANY  
 ENGINEERING, ENVIRONMENTAL AND  
 CONSTRUCTION SERVICES - WORLDWIDE

DESIGNED	XXXXX
DRAWN	XXXXX
CHECKED	XXXXX
APPROVED	XXXXX
APPROVED	
DATE	2/6/2012

**Center to Grand Forks Project**

COOPERATIVE, INC.

**MCLEAN COUNTY**

400.0 FT. HORIZ. SCALE  
 40.0 FT. VERT. SCALE

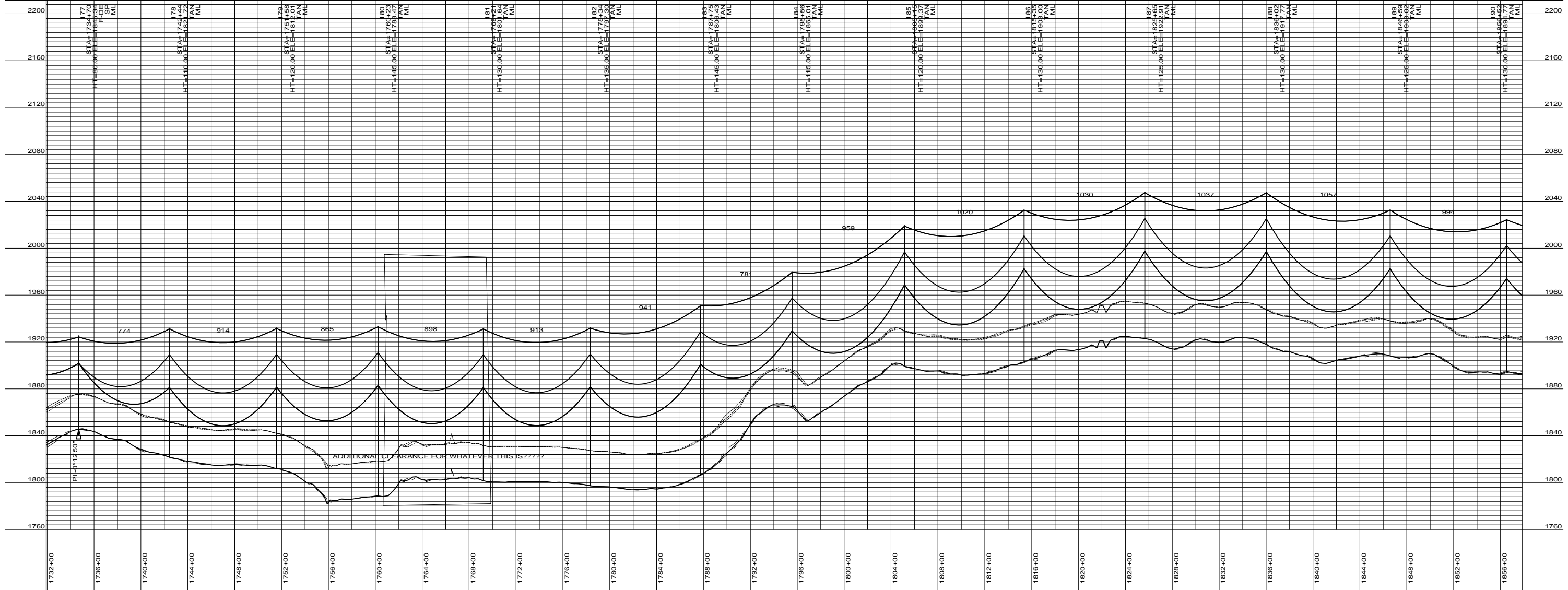
55-PP-ML000-006

PRELIMINARY



ADDITIONAL CLEARANCE FOR THIS IS??????????

LOT "A"  
 PL-121.03  
 P-299.36  
 MCLEAN  
 PL-382.47  
 RECORD  
 S OFFICE  
 P.O. 356 / 36  
 PAGE 217  
 PL-999.47  
 PER DOC  
 #266062



DESIGN CONDITIONS:  
 SHIELD \_\_\_\_\_  
 20% RTS @ -20 DEGREES F, INITIAL CLEARANCE LINE: XX'

CONDUCTOR \_\_\_\_\_  
 20% RTS @ -20 DEGREES F, INITIAL CLEARANCE LINE: XX'

REV	DATE	APP	DESCRIPTION	DFTR

8000 S. CHESTER STREET  
 SUITE 500  
 CENTENNIAL, CO 80112

A STANLEY GROUP COMPANY  
 ENGINEERING, ENVIRONMENTAL AND  
 CONSTRUCTION SERVICES - WORLDWIDE

DESIGNED XXXXX  
 DRAWN XXXXX  
 CHECKED XXXXX  
 APPROVED XXXXX  
 DATE 2/6/2012

**Center to Grand Forks Project**

COOPERATIVE, INC.

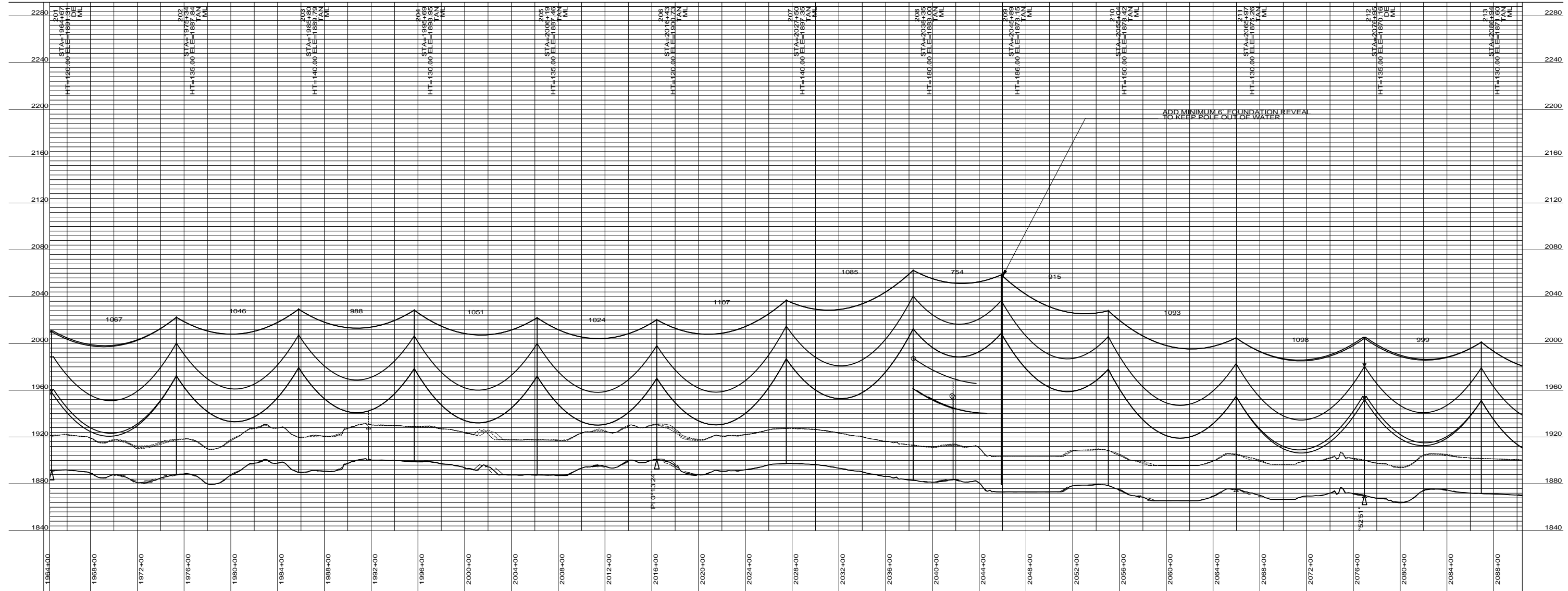
MCLEAN COUNTY

400.0 FT. HORIZ. SCALE  
 40.0 FT. VERT. SCALE

55-PP-ML000-007



PRELIMINARY



DESIGN CONDITIONS:  
 SHIELD \_\_\_\_\_  
 20% RTS @ -20 DEGREES F, INITIAL CLEARANCE LINE: XX'  
 CONDUCTOR \_\_\_\_\_  
 20% RTS @ -20 DEGREES F, INITIAL

REV	DATE	APP	DESCRIPTION	DFTR

8000 S. CHESTER STREET  
 SUITE 500  
 CENTENNIAL, CO 80112

A STANLEY GROUP COMPANY  
 ENGINEERING, ENVIRONMENTAL AND  
 CONSTRUCTION SERVICES - WORLDWIDE

DESIGNED	XXXXX
DRAWN	XXXXX
CHECKED	XXXXX
APPROVED	XXXXX
DATE	2/6/2012

**Center to Grand Forks Project**

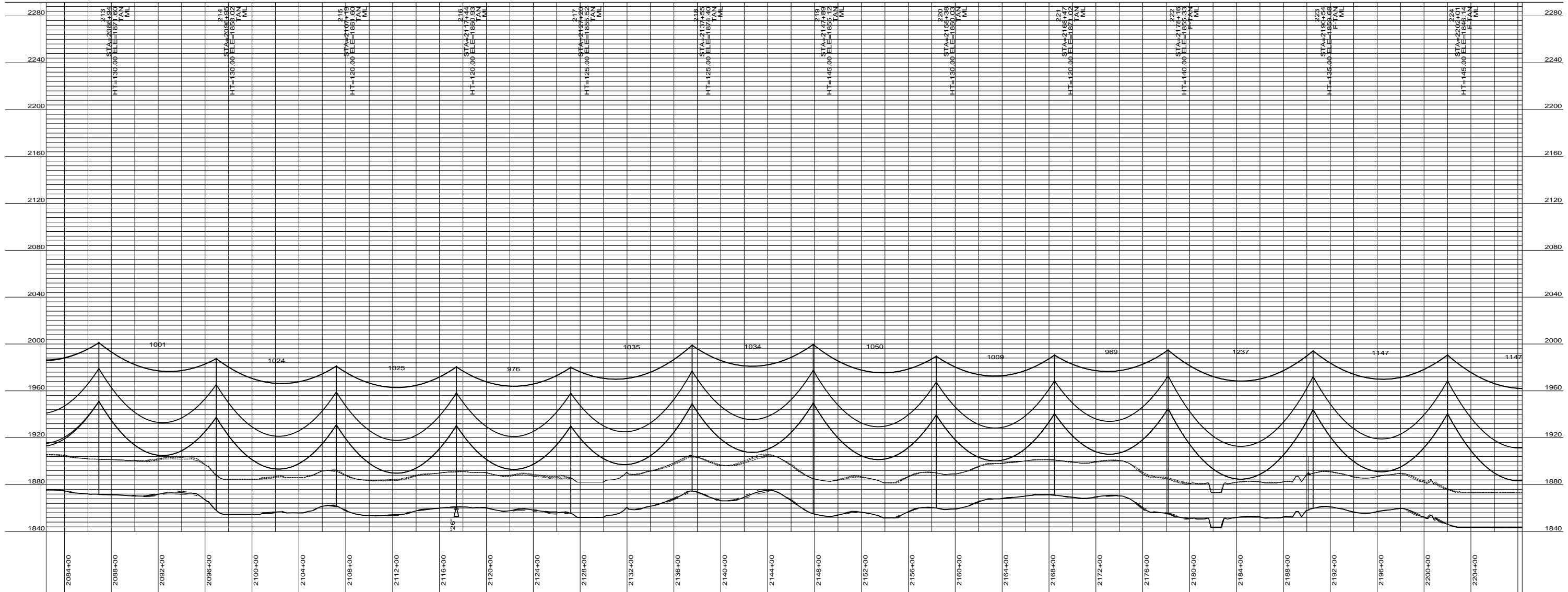
COOPERATIVE, INC.

MCLEAN COUNTY

400.0 FT. HORIZ. SCALE  
 40.0 FT. VERT. SCALE

55-PP-ML000-009

PRELIMINARY



DESIGN CONDITIONS:  
 SHIELD \_\_\_\_\_  
 20% RTS @ -20 DEGREES F, INITIAL CLEARANCE LINE: XX'  
 CONDUCTOR \_\_\_\_\_  
 20% RTS @ -20 DEGREES F, INITIAL

REV	DATE	APP	DESCRIPTION	DFTR

8000 S. CHESTER STREET  
 SUITE 500  
 CENTENNIAL, CO 80112

A STANLEY GROUP COMPANY  
 ENGINEERING, ENVIRONMENTAL AND  
 CONSTRUCTION SERVICES - WORLDWIDE

DESIGNED XXXXX  
 DRAWN XXXXX  
 CHECKED XXXXX  
 APPROVED XXXXX  
 DATE 2/6/2012

**Center to Grand Forks Project**

COOPERATIVE, INC.

**MCLEAN COUNTY**

400.0 FT. HORIZ. SCALE  
 40.0 FT. VERT. SCALE

55-PP-ML000-010

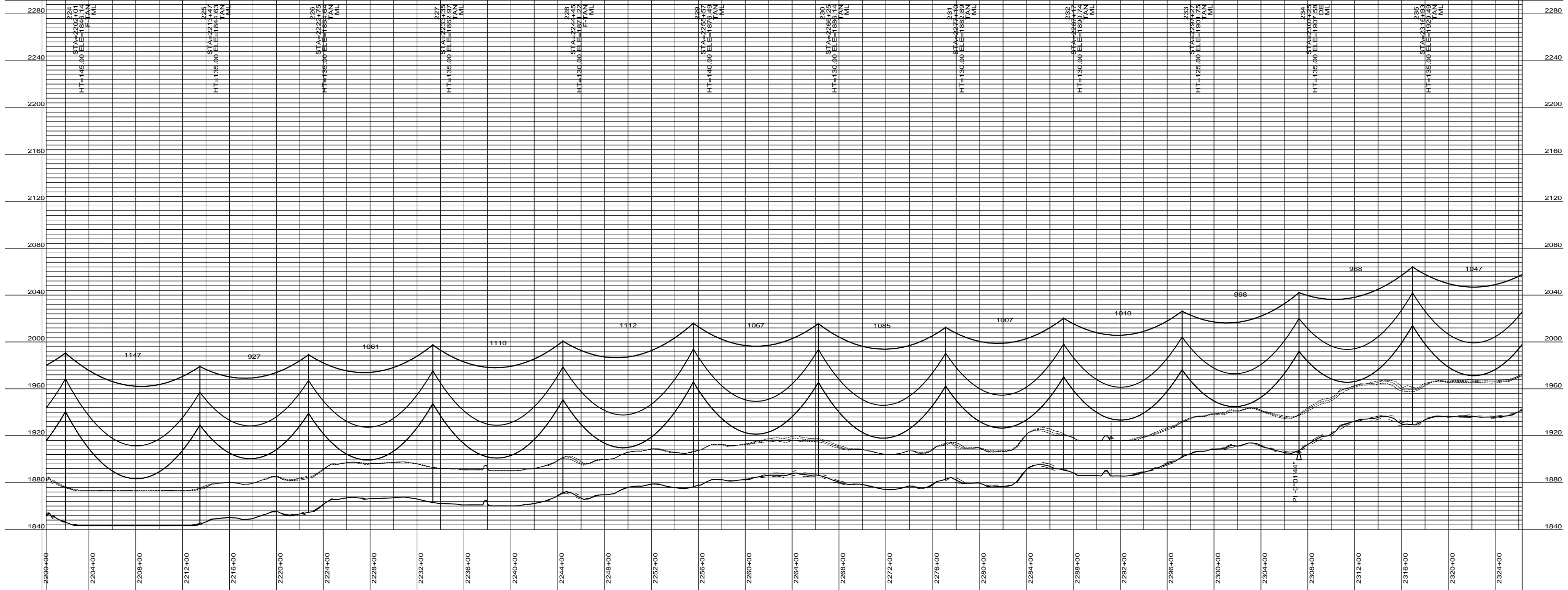
PRELIMINARY



PI-1807.8  
ND HWY 41  
PI-2527.8  
PI-2907.9  
WVA

PI-267.59  
ELECTRICAL  
PI-388.3  
PI-2907.9  
PER  
DOC #28 1062

PI 2307+24.95  
-0'01'14"



DESIGN CONDITIONS:  
SHIELD \_\_\_\_\_  
20% RTS @ -20 DEGREES F, INITIAL CLEARANCE LINE: XX'

CONDUCTOR \_\_\_\_\_  
20% RTS @ -20 DEGREES F, INITIAL

REV	DATE	APP	DESCRIPTION	DFTR

8000 S. CHESTER STREET  
SUITE 500  
CENTENNIAL, CO 80112

A STANLEY GROUP COMPANY  
ENGINEERING, ENVIRONMENTAL AND  
CONSTRUCTION SERVICES - WORLDWIDE

DESIGNED XXXXX  
DRAWN XXXXX  
CHECKED XXXXX  
APPROVED XXXXX  
DATE 2/6/2012

**Center to Grand Forks Project**

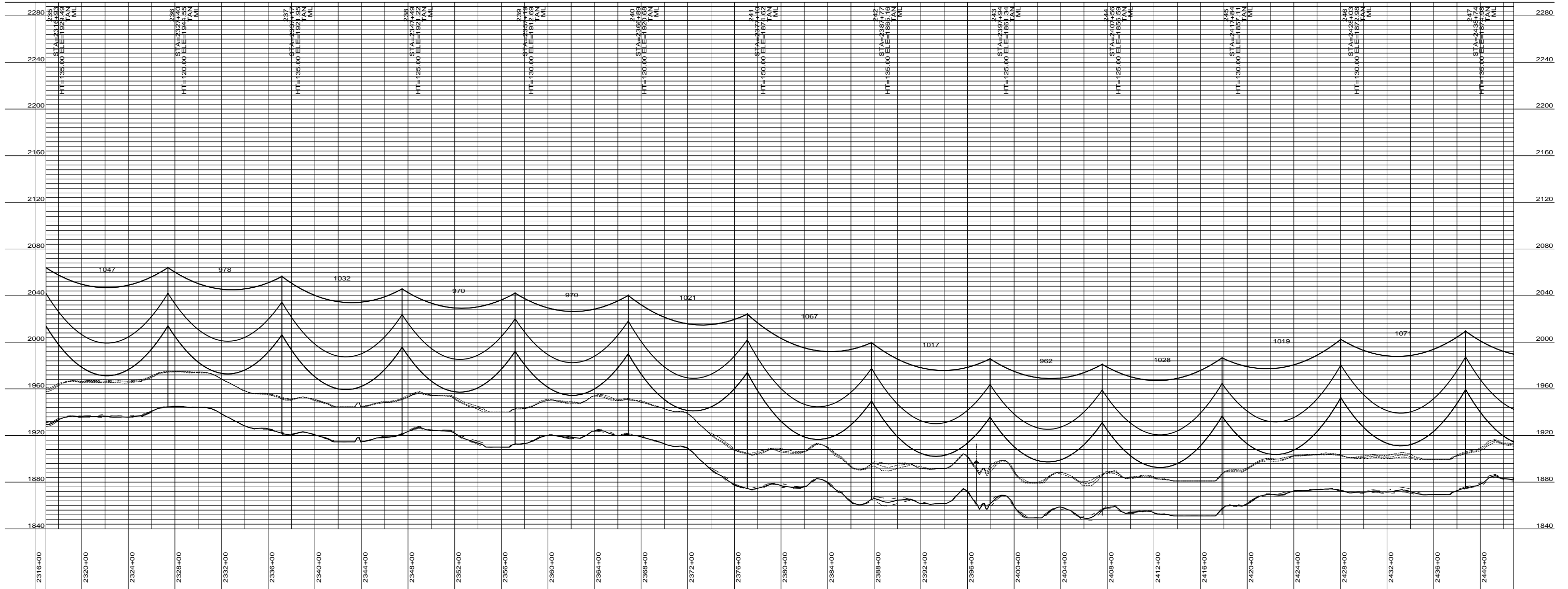
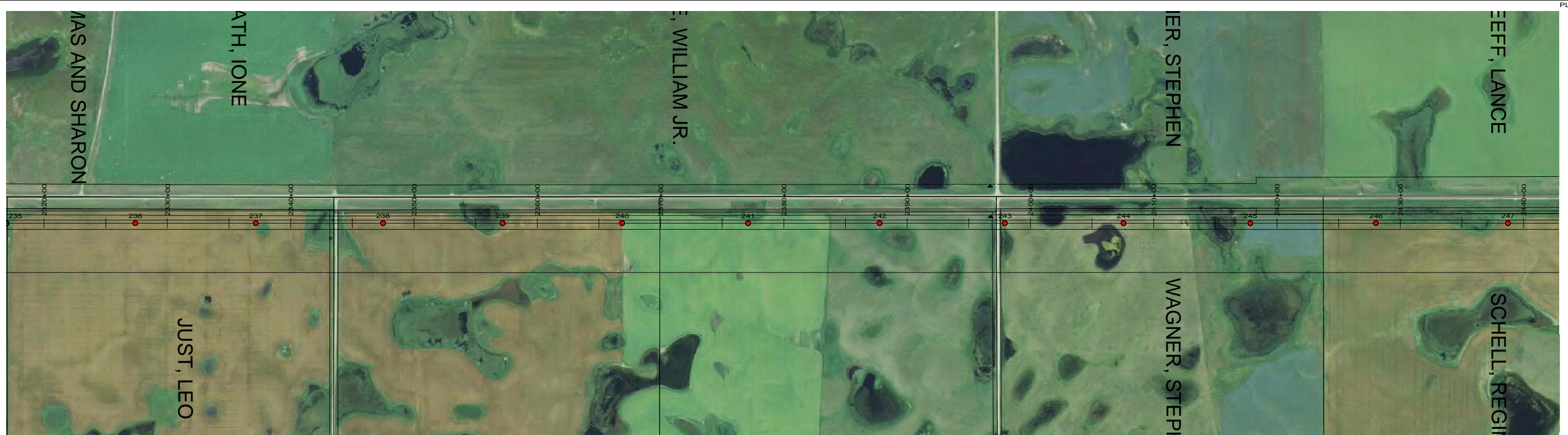
COOPERATIVE, INC.

**MCLEAN COUNTY**

400.0 FT. HORIZ. SCALE  
40.0 FT. VERT. SCALE

55-PP-ML000-011

PRELIMINARY



DESIGN CONDITIONS:  
 SHIELD \_\_\_\_\_  
 20% RTS @ -20 DEGREES F, INITIAL  
 CLEARANCE LINE: XX'

CONDUCTOR \_\_\_\_\_  
 20% RTS @ -20 DEGREES F, INITIAL

REV	DATE	APP	DESCRIPTION	DFTR

**Stanley Consultants INC.**

8000 S. CHESTER STREET  
 SUITE 500  
 CENTENNIAL, CO 80112

A STANLEY GROUP COMPANY  
 ENGINEERING, ENVIRONMENTAL AND  
 CONSTRUCTION SERVICES - WORLDWIDE

DESIGNED	XXXXX
DRAWN	XXXXX
CHECKED	XXXXX
APPROVED	XXXXX
DATE	2/6/2012

**Center to Grand Forks Project**

**Minnkota Power**  
 COOPERATIVE, INC.

**MCLEAN COUNTY**

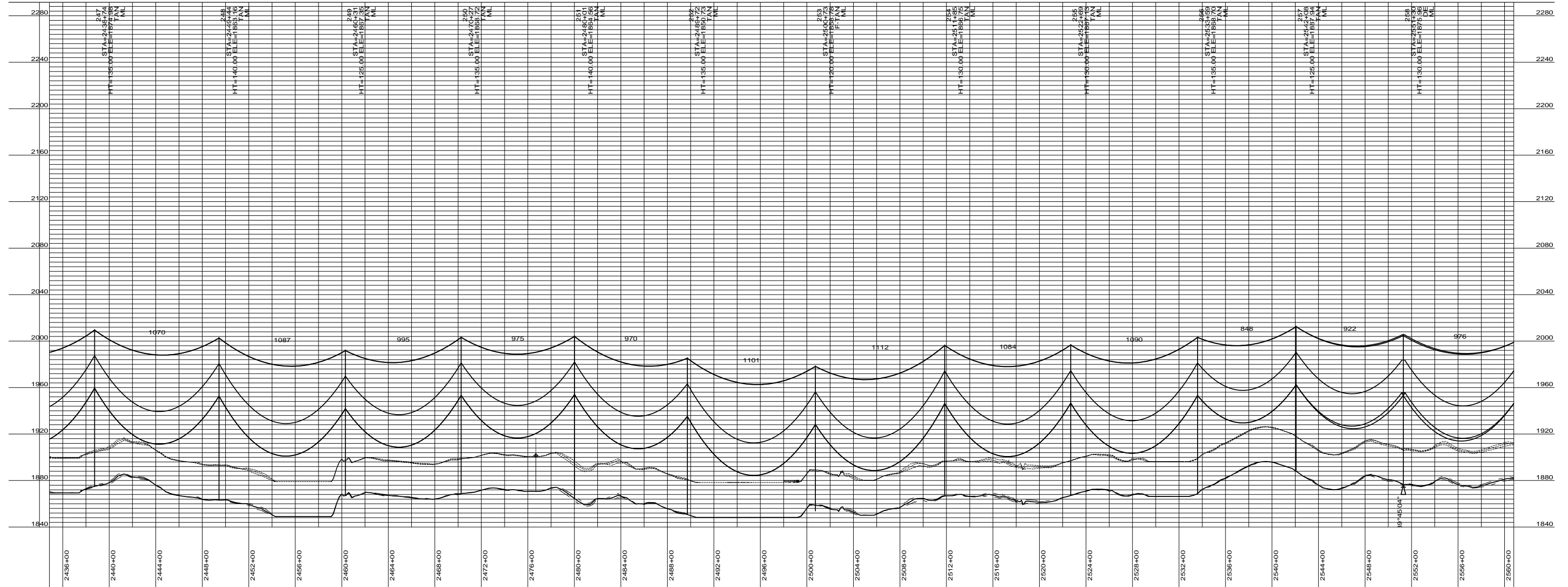
400.0 FT. HORIZ. SCALE  
 40.0 FT. VERT. SCALE

55-PP-ML000-012

PRELIMINARY



PT=2727.70  
 TAIL 120'  
 P1=330.01  
 POWER  
 EASEMENT  
 PER  
 89°45'04"  
 DOC#28977



DESIGN CONDITIONS:  
 SHIELD \_\_\_\_\_  
 20% RTS @ -20 DEGREES F, INITIAL CLEARANCE LINE: XX'  
 CONDUCTOR \_\_\_\_\_  
 20% RTS @ -20 DEGREES F, INITIAL

**Stanley Consultants INC.**  
 8000 S. CHESTER STREET  
 SUITE 500  
 CENTENNIAL, CO 80112  
 A STANLEY GROUP COMPANY  
 ENGINEERING, ENVIRONMENTAL AND  
 CONSTRUCTION SERVICES - WORLDWIDE

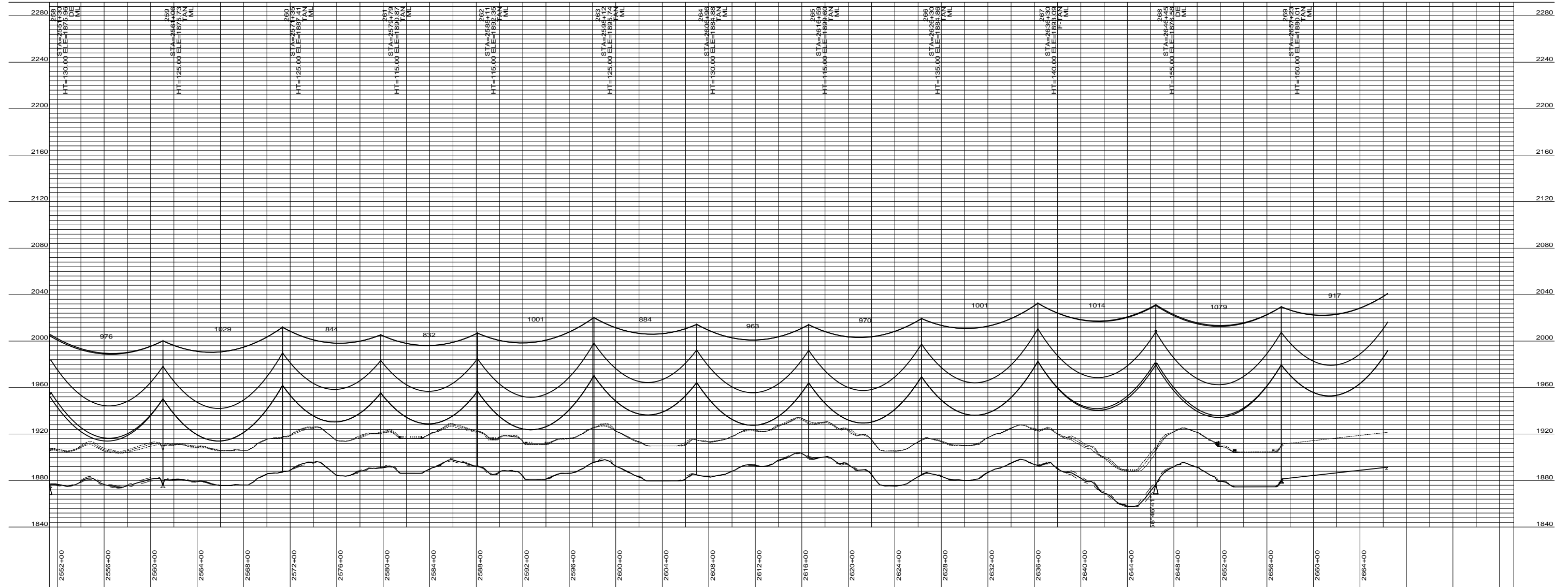
DESIGNED XXXXX  
 DRAWN XXXXX  
 CHECKED XXXXX  
 APPROVED XXXXX  
 DATE 2/6/2012

**Center to Grand Forks Project**  
**Minnkota Power**  
 COOPERATIVE, INC.

**MCLEAN COUNTY**  
 400.0 FT. HORIZ. SCALE  
 40.0 FT. VERT. SCALE  
 55-PP-ML000-013

REV	DATE	APP	DESCRIPTION	DFTR

PRELIMINARY



DESIGN CONDITIONS:  
 SHIELD \_\_\_\_\_  
 20% RTS @ -20 DEGREES F, INITIAL CLEARANCE LINE: XX'  
 CONDUCTOR \_\_\_\_\_  
 20% RTS @ -20 DEGREES F, INITIAL

REV	DATE	APP	DESCRIPTION	DFTR

**Stanley Consultants INC.**  
 8000 S. CHESTER STREET  
 SUITE 500  
 CENTENNIAL, CO 80112  
 A STANLEY GROUP COMPANY  
 ENGINEERING, ENVIRONMENTAL AND  
 CONSTRUCTION SERVICES - WORLDWIDE

DESIGNED XXXXX  
 DRAWN XXXXX  
 CHECKED XXXXX  
 APPROVED XXXXX  
 DATE 2/6/2012

**Center to Grand Forks Project**  
**Minnkota Power**  
 COOPERATIVE, INC.

**MCLEAN COUNTY**  
 400.0 FT. HORIZ. SCALE  
 40.0 FT. VERT. SCALE  
 55-PP-ML000-014