



December 9, 2013

**VIA POSTAL SERVICE**

Mr. Darrell Nitschke  
Executive Secretary  
North Dakota Public Service Commission  
600 E. Boulevard, Dept. 408  
Bismarck, ND 58505-0480



**RE: Minnkota power Cooperative, Inc.  
345 kV Transmission Line – Center  
to Grand Forks Project  
Case No. PU-09-670**

Dear Mr. Nitschke:

Please accept the attached Structure Relocation requests for the CGF Project in:

McLean County (SR-CGF-ML-004 & 005)  
Sheridan County (SR-CGF-SH-010)

Sincerely,

Mike Hennes  
Senior Manager Transmission Operations  
Minnkota Power Cooperative  
(701) 795-4352

Encl. Structure Relocation Requests including:  
Class III Intensive Archaeological Resources Inventory Memo

cc: Mr. Jerry Lein (*w/ encl. – via e-mail*)

# Center to Grand Forks Project



▶ CGF Project – Structure Relocation Approval Request

Case No. PU-09-670

SR-CGF-ML-004

Michael Hennes ▶ Minnkota Power Cooperative, Inc. ▶ 10/6/2012

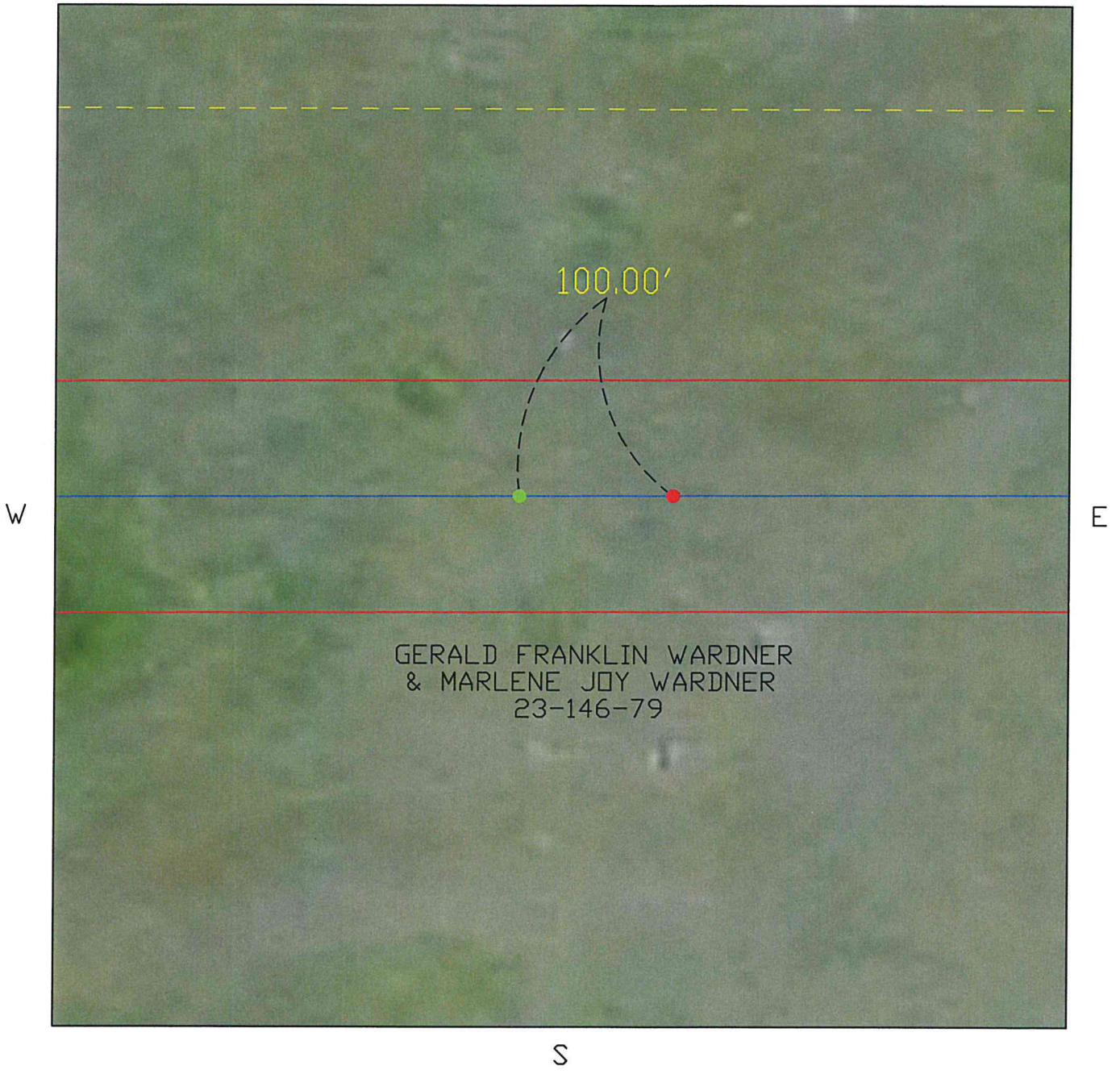
<u>Relocation Request:</u>	<p>Minnkota requests approval of a shift in the location of Structure 261 in Griggs County (<i>see</i> attached map showing original and new structure locations).</p> <p>Minnkota requests approval of relocations as soon as possible in order enable it to proceed with installation of foundations for structure.</p>
<u>Location:</u>	<p>NE1/4 of Sections 23, Township 146North, Range 79 West, McLean County, North Dakota.</p> <p>Relocated structure will remain within the approved Route, and on the same landowners' property.</p>
<u>Reason for Relocation:</u>	<p>To move the structure outside the boundary of a newly discovered potential cultural site.</p>
<u>Environmental Review/Compliance with Siting Criteria:</u>	<p>New structure location was included in a pedestrian surveys for cultural resources and wetlands, and no cultural resources or wetlands will be impacted by this structure relocation (<i>see</i> report attached)</p> <p>No exclusion or avoidance areas will be impacted by structure relocation.</p>

SCALE:

1" = 100'



SR-CGF-ML-004



GERALD FRANKLIN WARDNER  
 & MARLENE JOY WARDNER  
 23-146-79

DESCRIPTION NE1/4 SEC. 23 TWP. 146N R. 79W  
 COUNTY MCLEAN STATE NORTH DAKOTA  
 OWNER GERALD FRANKLIN WARDNER & MARLENE JOY WARDNER ADDRESS 692 B 2ND ST NW MERCER, ND 58559

TRANSMISSION FACILITY: CENTER-GRAND FORKS 345 KV

POLE MOVEMENT:  $\frac{100.00' \text{ DIFFERENCE}}{\text{LENGTH}}$

- = NEW POLE LOCATION
  - = PSC APPROVED POLE LOCATION
- POLE #: 261

DATE: 11/18/2013  
 PROJECT: CENTER TO GRAND FORKS

To:	Dennis Rankin USDA Rural Utilities Service		
From:	Erika Eigenberger	Project:	Center to Grand Forks 345kV Transmission Line
cc:	Laura Dean (RUS), Paul Picha (ND State Historic Preservation Office), and Minnkota Power Cooperative (John Graves and Mike Hennes)		
Date:	11/18/2013	Job No:	186001 Task 004 Department 164

**Re: Class III Intensive Archaeological Resources Inventory Center to Grand Forks 345kV Line Supplemental Addendum 4 - Appendix 2**

**Introduction**

Minnkota Power Cooperative, Inc., (Minnkota) is building a 250-mile-long, 345-kilovolt (kV) Transmission Line (Project) from the Center 345-kV Substation, near Center, North Dakota, to the Prairie Substation, located just west of Grand Forks (Figure 1). The U.S. Department of Agriculture Rural Utilities Service (RUS) is providing financial assistance for the Project. The RUS determined that the Project required consultation under Section 106 of the National Historic Preservation Act of 1966, as amended, and it's implementing regulations (36 Code of Federal Regulations (CFR) Part 800). Section 106 requires federal agencies to take into account the effects of their undertakings on properties listed, or eligible for listing, on the National Register of Historic Places (NRHP). The Project also requires consideration of impacts to historic and cultural resources under Section 101(b) of the National Environmental Policy Act (NEPA). In November 2010, the RUS published an Environmental Assessment with scoping (EA) in accordance with its Environmental Policy and Procedures for Implementing NEPA (7 CFR Part 1794), prior to the completion of historic property identification studies. Therefore, a Programmatic Agreement among the consulting parties, which includes RUS, the State Historical Society of North Dakota (SHSND), the U.S. Fish and Wildlife Service (USFWS), and Minnkota, details the specific procedures relating to historic property identification, possible adverse effects, and treatment of historic properties.

This Class III Addendum 4 – Appendix 2 addresses two newly identified historic sites discovered by the HDR Engineering, Inc. (HDR) Environmental Inspector (EI) during Project staking for Structure 251 and Structure 261, prior to construction activities. The sites were later visited by HDR Archaeologists on November 4, 2013 and recorded. The proposed location of Structure 251 is within the boundaries of Site CGF-251-002 and the proposed location of Structure 261 is within the boundaries of Site CGF-261-001.

Neither of the historic sites is present on the 1887 General Land Office (GLO) maps that were reviewed as part of the initial literature search for the Project. In addition, survey methodology for the Project was based on a predictive model that identified areas for survey based on potential for the presence of precontact archaeological resources. As these newly identified sites are historic in nature, they do not follow the same modeling patterns and can be found essential anywhere on the landscape. Based on the Final Center to Grand Forks Archaeological Predictive Model (FCGFAPM), both of the newly identified historic sites fall within areas not considered to have a high potential for the presence of precontact

archaeological resources. Since 100% survey of this Project was not conducted and since these two portions of the Project were not in high probability areas, they were not documented as a part of the Class III field survey (Figure 2).

## Methods

For a complete description of the Predictive Model, the Area of Potential Effects, the methods utilized for the Field Survey, and the Collection Policy, please refer to the *Class III Intensive Archaeological Resources Inventory Center to Grand Forks 345kV Line* report (Justin and Eigenberger 2011)

## Results of Investigations

### Summary

Due to the size of the Project and multiple layout changes, archaeological survey of the Project was conducted in multiple mobilizations.

The most recent fieldwork was conducted for this Class III Addendum 4 – Appendix 2 report, and was completed on November 4, 2013. Survey consisted of visiting the two proposed structure locations (Structure 251 and Structure 261) to complete a pedestrian survey and document the newly identified sites.

Site CGF-251-002 consists of foundations, historic features, and a sparse historic artifact scatter that includes fragments and rolls of barbed wire fencing.

Site CGF-261-001 consists of foundations, historic features, and a sparse historic artifact scatter that includes glass bottles, barbed wire, metal fragments, metal farm machinery parts, milled lumber, and bricks.

### Survey Segment Coverage

#### McLean County

#### *Township 146N, Range 79W, Section 26*

##### **Proposed Location of Structure 251**

The proposed location of Structure 251 is in the north half of Section 26, within a fallow field (Figure 3). According to the FCGFAPM, this area is within a moderate potential zone. This area was not included in the original Class III survey. Currently, the proposed location of Structure 251 is with the boundary of Site CGF-251-002 (Figure 4).

The entire right-of-way (ROW), from 2<sup>nd</sup> Street NW to the pond/wetland south of Structure 251 was pedestrian surveyed. Survey was conducted in transects spaced at 5 meter (m) intervals. Ground surface visibility in the grassland ranged from good to poor, at 0-25 percent. Rodent mounds were opportunistically examined along the route. During the pedestrian survey, one historic site (CGF-251-002) was identified.

#### *Township 146N, Range 79W, Section 23*

##### **Proposed Location of Structure 261**

The proposed location of Structure 261 is in the north half of Section 23, within a gently rolling pasture (Figure 5). According to the FCGFAPM, this area is within a moderate potential zone. This area was not

included in the original Class III survey. Currently, the proposed location of Structure 261 is with the boundary of Site CGF-261-001 (Figure 6).

The entire ROW, from approximately 120 m west of Structure 261 to the 23/24 Section line was pedestrian surveyed. Survey was conducted in transects spaced at 5 m intervals. Ground surface visibility in the pasture was good, at 25 percent. Rodent mounds and cow trails were also opportunistically examined along the route. During the pedestrian survey, one historic site (CGF-261-001) was identified.

## Identified Sites

Two historic sites (CGF-251-002 and CGF-261-001) were identified during the fieldwork completed for the Class III Intensive Archaeological Resources Inventory Center to Grand Forks 345kV Line Supplemental Addendum 4 – Appendix 2.

### Site CGF-251-002

Site CGF-251-002 is the remnants of a farmstead recorded during the pedestrian survey of the proposed location of Structure 251 (Figure 4 and Photo 1). The site is located within an overgrown grassy area adjacent to Highway 41, 2<sup>nd</sup> Street NW, and a pond/wetland. Features at the site include a concrete and fieldstone foundation (F001), a wooden fence line (F002), a metal post (F003), a metal post with barbed wire fencing (F004), a concrete foundation (F005), a concrete and fieldstone foundation (F006), and a concrete and fieldstone foundation (F007) (Photos 2-8).

Dimensions of the historic features include F001 - approximately 32 ft. wide by 40 ft. long, aligned east/west; F005 approximately 10 ft. wide by 15 ft. long, aligned east/west; F006 - approximately 23 ft. wide by 23 ft. long, filled with cut trees; and F007 - approximately 10 ft. wide by 15 ft. long, aligned east/west. A layer of gravel was noted on the surface of F007.

Historic materials identified during the pedestrian survey include fragments and rolls of barbed wire fencing. No additional materials were noted.

A review of available historic maps reveals that the farmstead is not present on the 1887 GLO map or the 1914 plat map (United States Surveyor General 1887 and Geo. A. Ogle and Company 1914). A structure first appears on the ca. 1950 plat map and is associated with the name Elmer Peterson (L. Roe Directory Service ca. 1950). The structure is also present in 1962 and is also associated with the name Elmer Peterson (Thomas O. Nelson Company 1962). By 1974, the structure is no longer present and the landowner has changed to Richard and Leona New Miller [sic] (Midland Atlas Company 1974). Additional plats from 1980 to 2007 were reviewed (Midland Atlas Company 1980-2007). No structures are depicted on these plats.

In addition to GLO and plat map review, a county and township history was reviewed (McLean County Heritage 1978). None of the names associated with the property were noted.

### Site CGF-261-001

Site CGF-261-001 is the remnants of a farmstead recorded during the pedestrian survey of the proposed location of Structure 261 (Figure 6 and Photo 9). The site is located within a pasture area in gently rolling topography. Features at the site include a root cellar and depression (F001), a fallen windmill (F002), a concrete foundation (F003), a concrete and fieldstone foundation (F004), a fieldstone foundation (F005), a fieldstone foundation (F006), and a depression (F007) (Photos 10-15).

Dimensions of the historic features include F001 (root cellar) - approximately 10 ft. wide by 18 ft. long and 3 ft. deep; F001 (depression) - approximately 29 ft. long by 20 ft. wide at the widest point; F003 - approximately 6 ft. wide by 16 ft. long, aligned north/south; F004 - approximately 25 ft. wide by 33 ft. long, aligned east/west; F005 - approximately 16 ft. wide by 30 ft. long, aligned east/west; F006 - approximately 13 ft. wide by 24 ft. long, aligned east/west; and F007 - approximately 6 ft. wide, 7 ft. long, and 1.5 ft. deep.

Historic materials identified during the pedestrian survey include glass bottles, barbed wire, metal fragments, metal farm machinery parts, milled lumber (inside F003), and bricks. Glass bottles identified at the site include: SF001 - clear glass bottle with handle; SF002 - green glass bottle "Soda Water Jamestown, North Dakota" (Photo 16); SF003 - broken clear glass bottle with handle; SF004 - clear glass bottle "California Fig Syrup Co. Califig Sterling Products Inc." (Photo 17); and SF005 - clear glass bottle.

A review of available historic maps reveals that the farmstead is not present on the 1887 GLO map (United States Surveyor General 1887). The structure first appears on the 1914 plat map and is associated with the name Chas. Porter (Geo. A. Ogle and Company 1914). Two structures are depicted on the 1914 plat. The structure is also present on the ca. 1950 plat and is associated with the name Emil Wanner (L. Roe Directory Service ca. 1950). Only one structure is depicted in ca. 1950. Additional plats from 1962 to 2007 were reviewed (Midland Atlas Company 1962-2007). No structures are depicted on these plats.

In addition to GLO and plat map review, a county and township history was reviewed (McLean County Heritage 1978). None of the names associated with the property were noted.

## Conclusions and Recommendations

This report is provided to RUS to assist with its responsibilities for compliance with Section 106 of the NHPA, as amended (36 CFR 800).

### Site CGF-251-002

Site CGF-251-002 is the remnants of a farmstead recorded during the pedestrian survey of the proposed location of Structure 251 (Figures 3-4). Currently, the proposed location of Structure 251 is within the boundary of Site CGF-251-002.

Research revealed that Site CGF-251-002 is not associated with persons connected to activities of local, state, or national historic importance. Nor is it associated with important historic events or significant broad historic patterns. As such, this site is not significant under NRHP Criteria A or B. Because this site does not contain any extant structures, it is not significant under NRHP Criterion C. Because this site consists of the remains of a farmstead of relatively recent vintage (ca. 1950s) and was likely occupied for a short period of time, it does not retain sufficient information potential to qualify it as significant under NRHP Criterion D. Site CGF-251-002 is recommended as not eligible for listing on the NRHP.

HDR does not recommend Minnkota alter its construction plan for this location.

### Site CGF-261-001

Site CGF-261-001 is the remnants of a farmstead recorded during the pedestrian survey of the proposed location of Structure 261 (Figures 5-6). Currently, the proposed location of Structure 261 is within the boundary of Site CGF-261-001.

Research revealed that Site CGF-261-001 is not associated with persons connected to activities of local, state, or national historic importance. As such, this site is not significant under NRHP Criterion B. Because no subsurface testing was completed at Site CGF-261-001, it is possible that intact cultural deposits may be present. Additional investigations at Site CGF-261-001 may answer research questions pertinent to early settlement and farming in the region. Further investigation is needed to evaluate the significance of this site and determine NRHP eligibility. At this time Site CGF-261-001 remains unevaluated.

As Site CGF-261-001 remains unevaluated, HDR recommends that Minnkota move Structure 261 to a point outside the site boundary. During discussions with Minnkota, Structure 261 will be moved 100 ft. west of the current location. This move will place Structure 261 outside the boundary of Site CGF-261-001 (Figure 6). Construction will have no physical effect on this site.

## References

- Geo. A. Ogle and Company. 1914. *Standard Atlas of McLean County, North Dakota*. Geo. A. Ogle and Company, Chicago, Illinois.
- HDR Engineering, Inc. 2010. *Class I Literature Search Proposed Minnkota Power Cooperative, Inc. Center to Grand Forks 345 kV Line*. Report prepared for Minnkota Power.
- Justin, Michael and Erika Eigenberger. 2011. *Class III Intensive Archaeological Resources Inventory Center to Grand Forks 345 kV Line*. Final report prepared for Minnkota Power.
- L. Roe Directory Service. Ca. 1950. *McLean County Atlas*. L. Roe Directory Service, Sioux Falls, South Dakota.
- McLean County Historical Society. 1978. *McLean County Heritage, McLean County, North Dakota*. McLean County Historical Society, Washburn, North Dakota. Printed by Taylor Publishing Company, Dallas, Texas.
- Midland Atlas Company, Inc. 1974. *Atlas of McLean County, North Dakota*. Midland Atlas Company, Inc., Milbank, South Dakota.
- Midland Atlas Company, Inc. 1980. *Atlas of McLean County, North Dakota*. Midland Atlas Company, Inc., Milbank, South Dakota.
- Midland Atlas Company, Inc. 1994. *Atlas of McLean County, North Dakota*. Midland Atlas Company, Inc., Milbank, South Dakota.
- Midland Atlas Company, Inc. 2007. *Atlas of McLean County, North Dakota*. Midland Atlas Company, Inc., Milbank, South Dakota.
- Thomas O. Nelson Company. 1962. *Atlas of McLean County, North Dakota*. Thomas O. Nelson Company, Fergus Falls, Minnesota.
- United States Surveyor General. 1887. General Land Office Survey Map of Township 146N, Range 79W. Online version available at:  
<http://www.swc.state.nd.us/4dlink9/4dcgi/GetSubCategoryRecord/Map%20and%20Data%20Resources>



Photo 1: Site CGF-251-002 overview, facing southwest



Photo 2: Site CGF-251-002 Feature 001, facing northeast



Photo 3: Site CGF-251-002 Feature 002, facing northeast



Photo 4: Site CGF-251-002 Feature 003, facing northeast



Photo 5: Site CGF-251-002 Feature 004 and proposed location of Structure 251, facing northeast



Photo 6: Site CGF-251-002 Feature 005, facing northeast



Photo 7: Site CGF-251-002 Feature 006, facing northeast



Photo 8: Site CGF-251-002 Feature 007, facing northeast



Photo 9: Site CGF-261-001 overview, facing east



Photo 10: Site CGF-261-001 Feature 001, facing west



Photo 11: Site CGF-261-001 Features 002 and 003, facing southeast



Photo 12: Site CGF-261-001 Feature 004, facing northwest



Photo 13: Site CGF-261-001 Feature 005, facing northeast



Photo 14: Site CGF-261-001 Feature 006, facing northwest



Photo 15: Site CGF-261-001 Feature 007, facing east

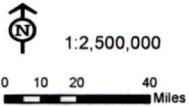
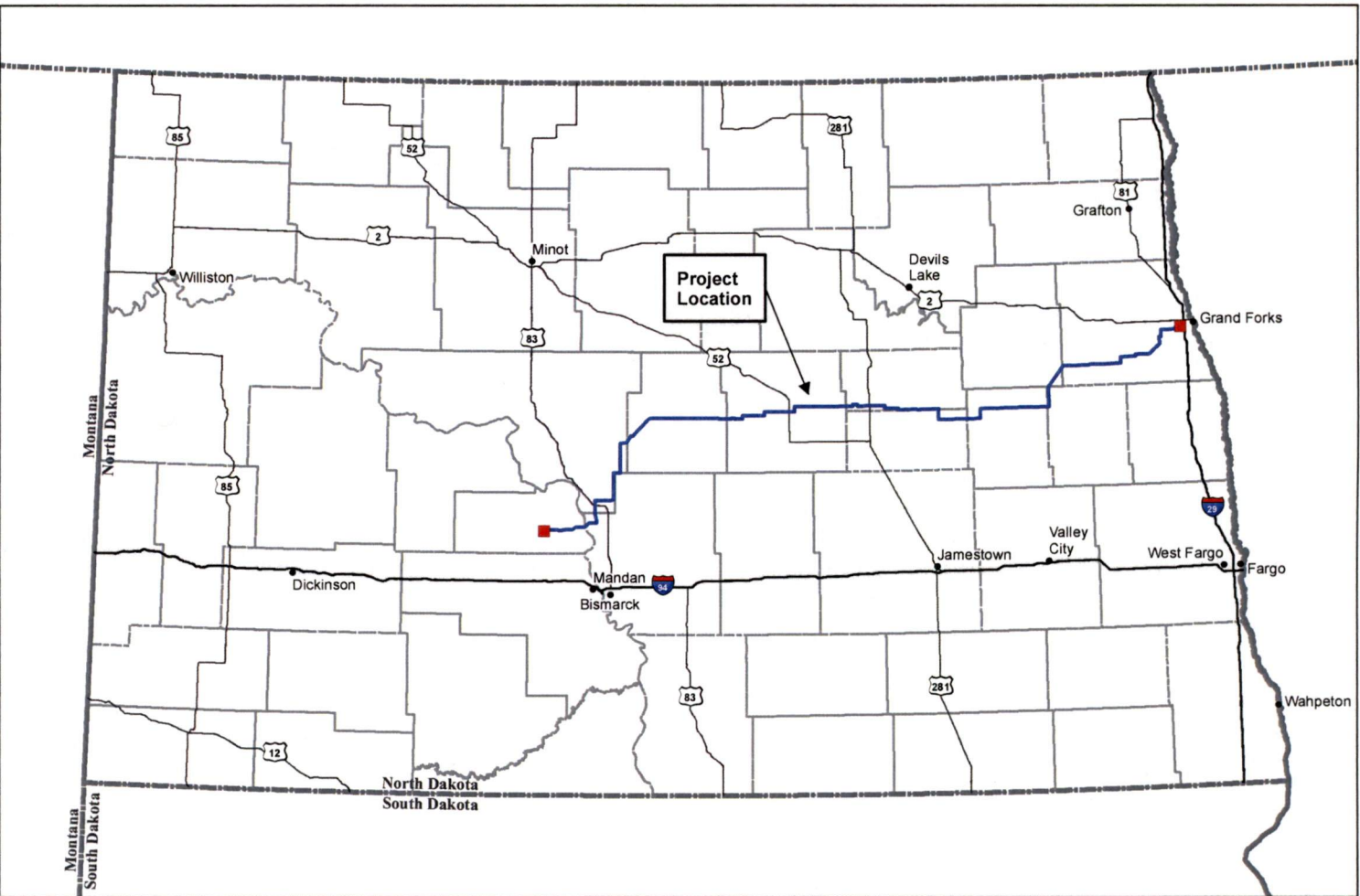


Photo 16: Site CGF-261-001 Surface Find 002,  
"Soda Water Jamestown, North Dakota"



Photo 17: Site CGF-261-001 Surface Find 004,  
"California Fig Syrup Co. Califig Sterling Products Inc."

Path: Z:\minnkota\11182013\mxd\Map\_CulturalResource\501511\arcbase\asdasd\map\501511\_Coverview\_Bx111.mxd Date: 11/18/2013



**COMMENTS**  
■ Substation  
— Project Corridor

Figure 1  
Project Location  
Center to Grand Forks Project  
Minnkota Power Cooperative, Inc.

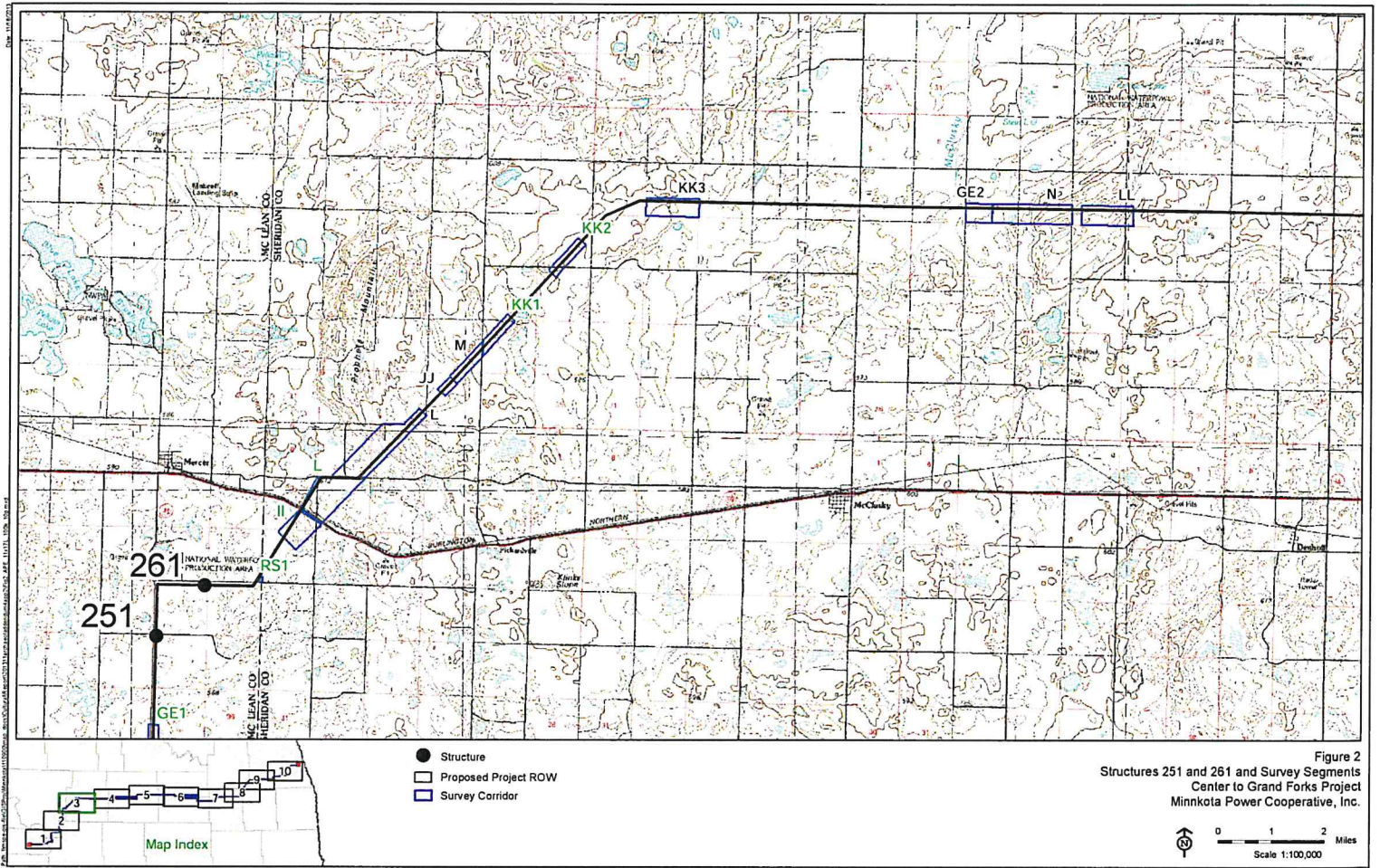
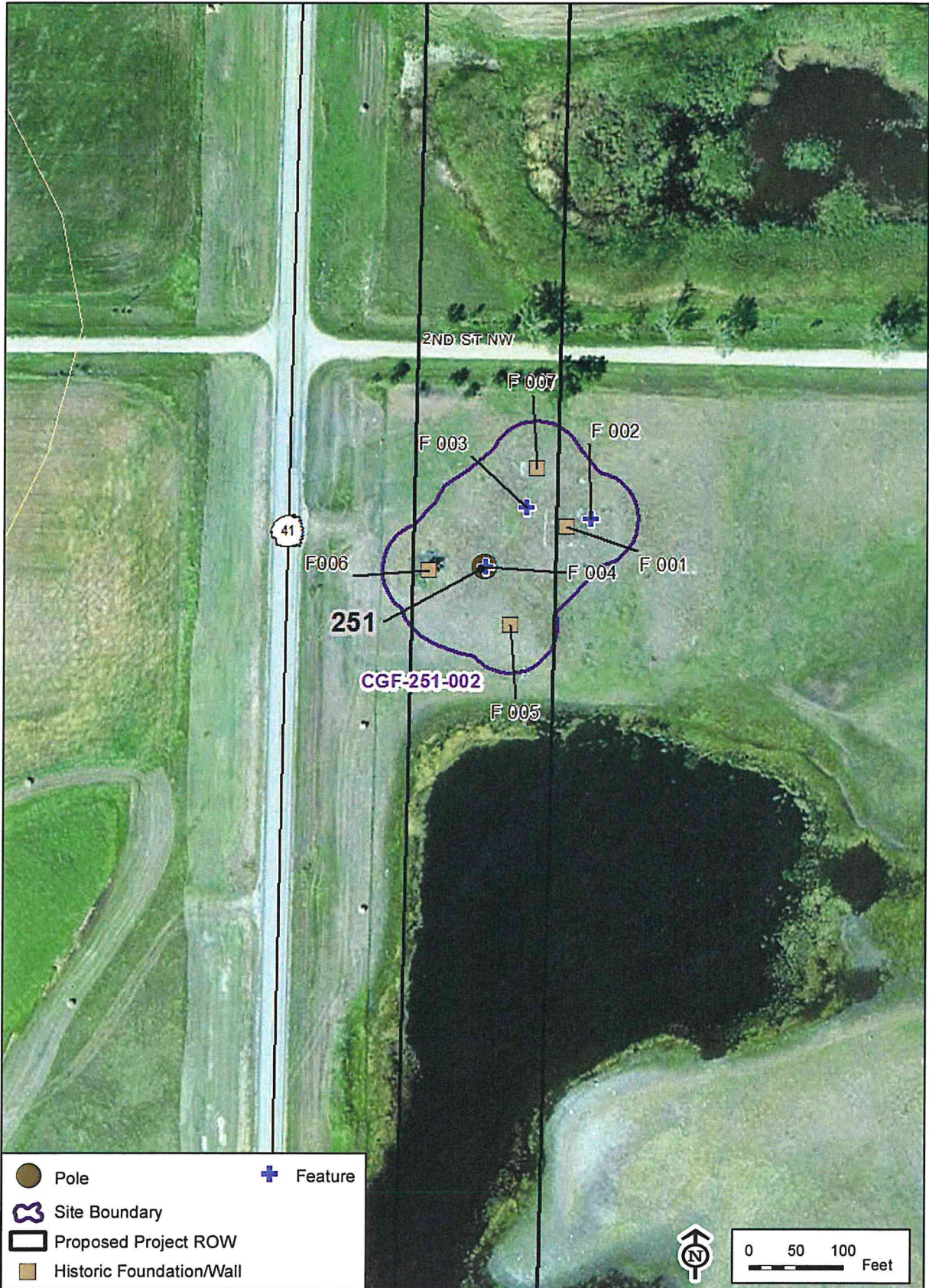


Figure 2  
Structures 251 and 261 and Survey Segments  
Center to Grand Forks Project  
Minnkota Power Cooperative, Inc.



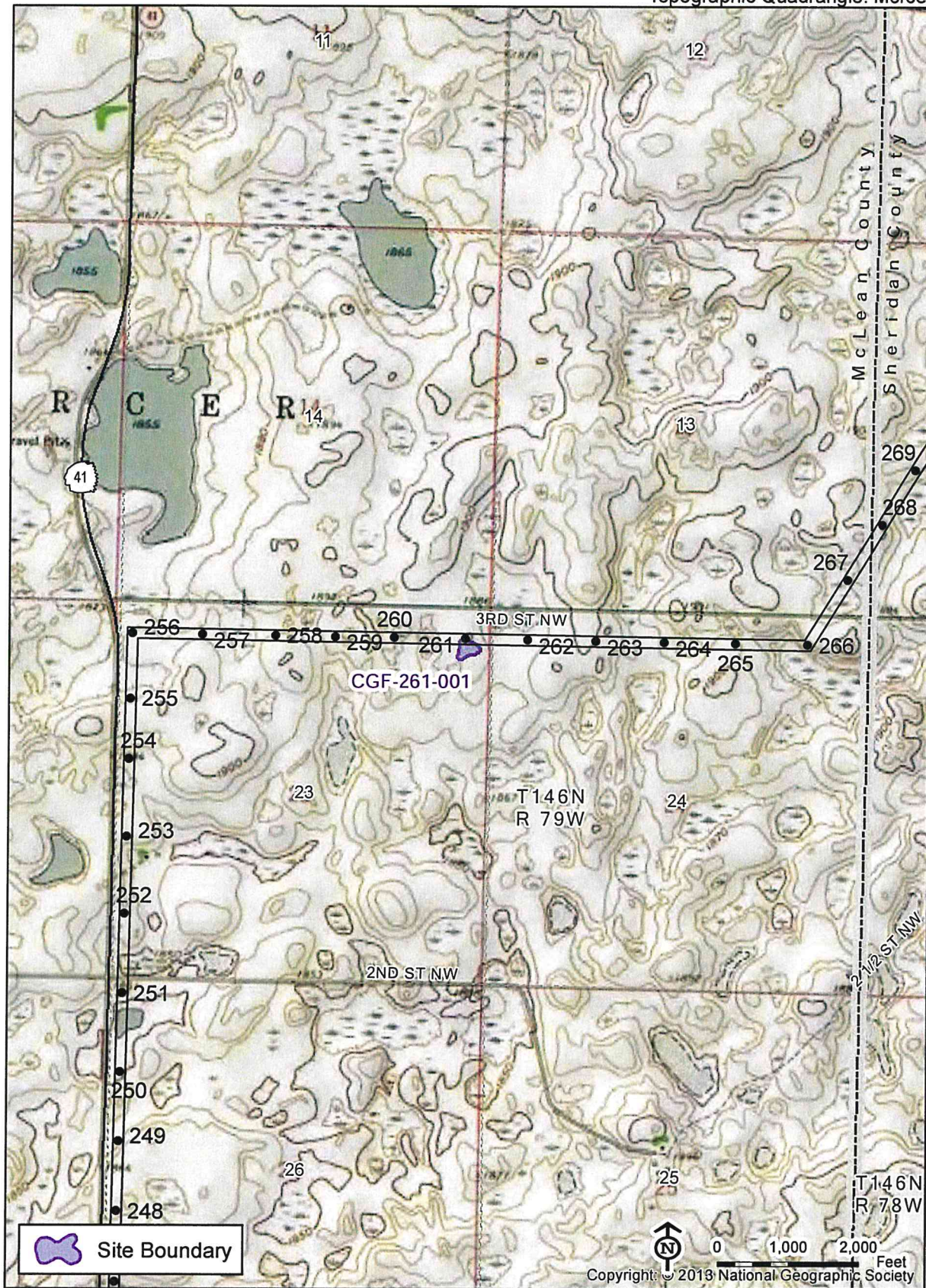
CONFIDENTIAL-NOT FOR GENERAL PUBLIC DISTRIBUTION.  
 CONTAINS SENSITIVE LOCATIONAL INFORMATION.  
 DISSEMINATION RESTRICTED TO THE APPROPRIATE  
 AGENCIES.

Figure 3  
 Site CGF-251-002 Overview



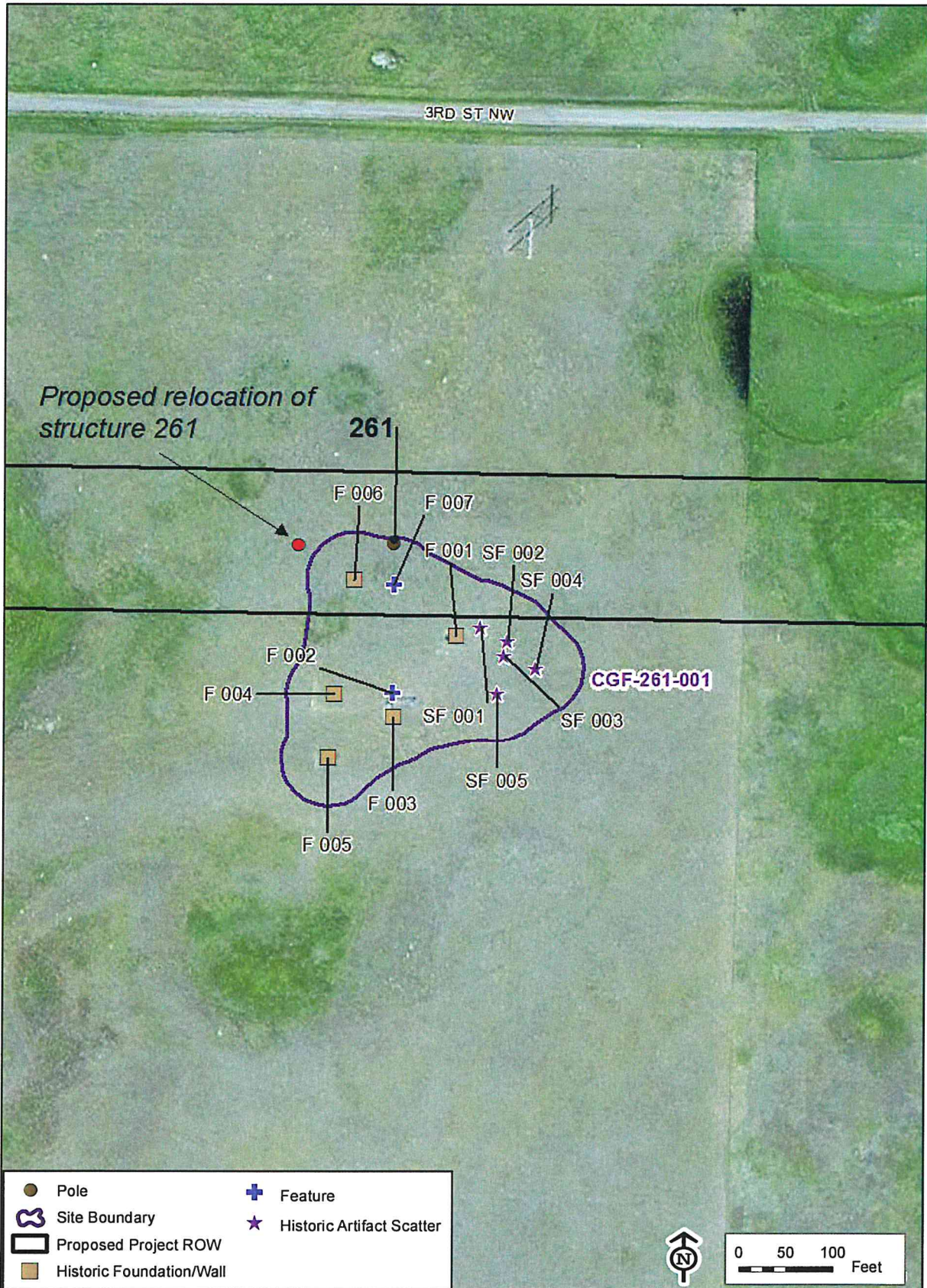
(c) 2010 Microsoft Corporation and its data suppliers  
**CONFIDENTIAL-NOT FOR GENERAL PUBLIC DISTRIBUTION.**  
**CONTAINS SENSITIVE LOCATIONAL INFORMATION.**  
**DISSEMINATION RESTRICTED TO THE APPROPRIATE AGENCIES.**

Figure 4  
 Site CGF-251-002 Sketch Map



CONFIDENTIAL-NOT FOR GENERAL PUBLIC DISTRIBUTION.  
CONTAINS SENSITIVE LOCATIONAL INFORMATION.  
DISSEMINATION RESTRICTED TO THE APPROPRIATE  
AGENCIES.

Figure 5  
Site CGF-261-001 Overview



(c) 2010 Microsoft Corporation and its data suppliers  
 CONFIDENTIAL-NOT FOR GENERAL PUBLIC DISTRIBUTION.  
 CONTAINS SENSITIVE LOCAL INFORMATION.  
 DISSEMINATION RESTRICTED TO THE APPROPRIATE  
 AGENCIES.

**Figure 6**  
**Site CGF-261-001 Sketch map**

# Center to Grand Forks Project



▶ CGF Project – Structure Relocation Approval Request

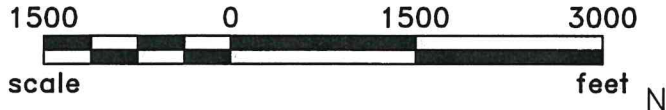
Case No. PU-09-670

SR-CGF-ML-005

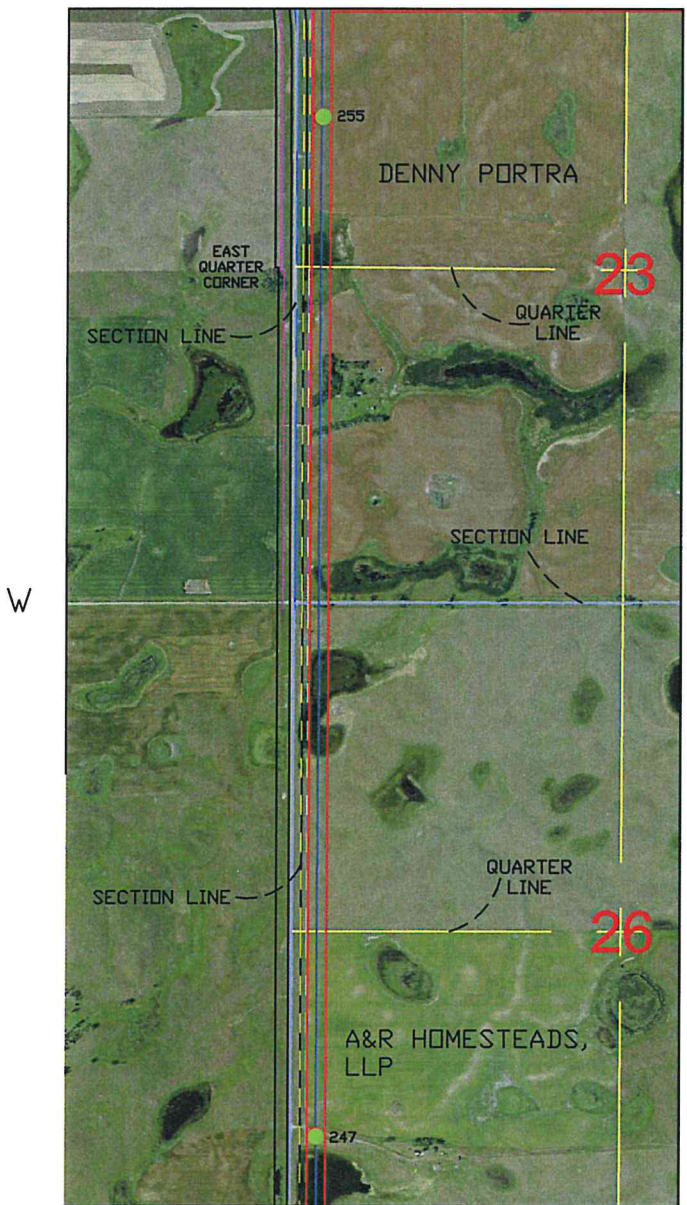
Michael Hennes ▶ Minnkota Power Cooperative, Inc. ▶ 10/6/2012

<u>Relocation Request:</u>	<p>Minnkota requests approval of a shift in the location of Structures 247 and 255 in McLean County (<i>see</i> attached map showing original and new structure locations).</p> <p>Minnkota requests approval of relocations as soon as possible in order enable it to proceed with installation of foundations for structure.</p>
<u>Location:</u>	<p>E1/2 &amp; E1/2 of E1/2 of W12 of Section 32, Township 142 North, Range 82 West, McLean County, North Dakota.</p> <p>Relocated structure will remain within the approved Route, and on the same landowners' property.</p>
<u>Reason for Relocation:</u>	<p>To move the structure to avoid an existing underground electric utility line.</p>
<u>Environmental Review/Compliance with Siting Criteria:</u>	<p>New structure locations were included in prior surveys for cultural resources and wetlands, and no cultural resources or wetlands will be impacted by structure relocations (<i>see</i> reports submitted as public hearing Exhibits K and M).</p> <p>No exclusion or avoidance areas will be impacted by structure relocations.</p>

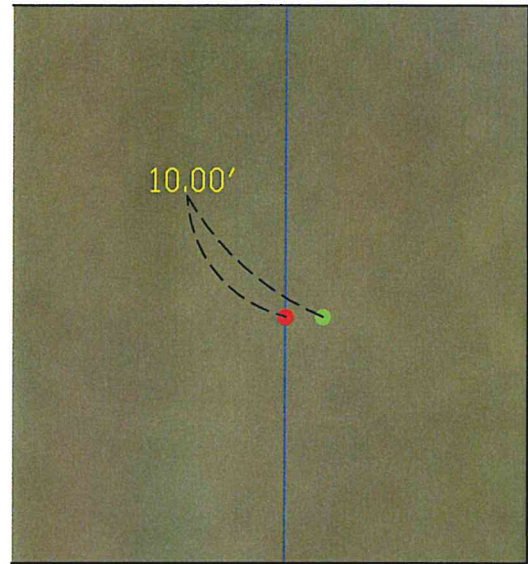
SCALE: 1" = 1500'



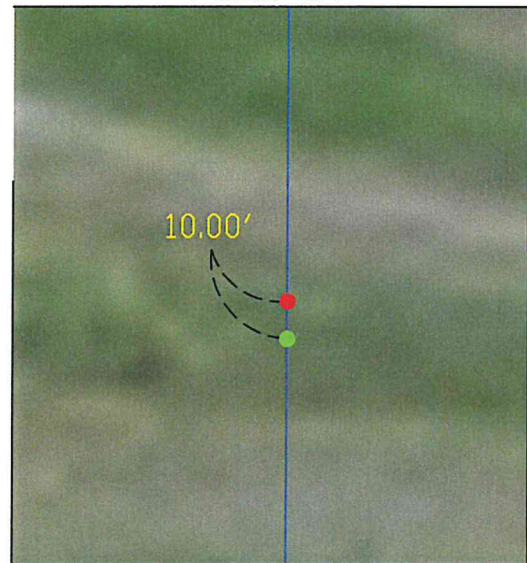
SR-CGF-ML-005



POLE 255



POLE 247



S

DESCRIPTION E1/2 & E1/2 OF E1/2 OF W1/2 SEC. 32 TWP. 142N R. 82W  
 COUNTY MCLEAN STATE NORTH DAKOTA  
 OWNER DENNY PORTRA ADDRESS 104 BURKHART AVE UNDERWOOD, ND 58576  
 OWNER A&R HOMESTEADS, LLP ADDRESS 201 MINNESOTA AVE, WILTON, ND 58579  
 TRANSMISSION FACILITY: CENTER-GRAND FORKS 345 KV

POLE MOVEMENT: 10.00' DIFFERENCE / LENGTH      10.00' DIFFERENCE / LENGTH

● = NEW POLE LOCATION  
 ● = PSC APPROVED POLE LOCATION

POLE #1: 247  
255

DATE: 11/25/2013  
 PROJECT: CENTER TO GRAND FORKS

# Center to Grand Forks Project



▶ CGF Project – Structure Relocation Approval Request

Case No. PU-09-670

SR-CGF-SH-010

Michael Hennes ▶ Minnkota Power Cooperative, Inc. ▶ 12/6/2013

<u>Relocation Request:</u>	<p>Minnkota requests approval of a shift in the location of Structure 281 in Sheridan County (<i>see</i> attached map showing original and new structure locations).</p> <p>Minnkota requests approval of relocations as soon as possible in order enable it to proceed with installation of foundation for structure.</p>
<u>Location:</u>	<p>NE1/4 of Section 8, Township 146 North, Range 78 West, Sheridan County, North Dakota.</p> <p>Relocated structures will remain within the approved Route, and on the same landowners' property.</p>
<u>Reason for Relocation:</u>	<p>To avoid a rural water line.</p>
<u>Environmental Review/Compliance with Siting Criteria:</u>	<p>New structure location was included in prior surveys for cultural resources and wetlands, and no cultural resources or wetlands will be impacted by structure relocation (<i>see</i> reports submitted as public hearing Exhibits K and M).</p> <p>No exclusion or avoidance areas will be impacted by structure relocation.</p>

SCALE: 1" = 100'



SR-CGF-SH-010



DESCRIPTION NE1/4 SEC. 8 TWP. 146NR. 78W  
 COUNTY SHERIDAN STATE NORTH DAKOTA  
 OWNER WAYNE HELM A/K/A WAYNE R. HELM & LYNN HELM A/K/A LYNN M. HELM ADDRESS 161 HIGHWAY 200 NE MCCLUSKY, ND 58463  
 TRANSMISSION FACILITY: CENTER-GRAND FORKS 345 KV  
 POLE MOVEMENT: 12.75' DIFF  
 LENGTH

- = NEW POLE LOCATION
  - = PSC APPROVED POLE LOCATION
- POLE #: 281

DATE: 11/25/2013  
 PROJECT: CENTER TO GRAND FORKS