

CONDUCTOR: 959.6 KCMIL SUWANNEE ACSR/TW DISPLAYED @ EXTREME ICE, NO WIND; CLEARANCE: 30 FT
 OPGW: 49F69S - 24 STRAND, DISPLAYED @ -30 DEGREES F
 SHIELD WIRE: 1/2" EHS STEEL, DISPLAYED @ -30 DEGREES F

| REV | DATE | APP | DESCRIPTION | DFTR |
|-----|----------|-----|--|------|
| 2 | 11/26/14 | KJH | RECORD DRAWING | BEC |
| 1 | 03/29/13 | HWD | ADDED STR & FR DRAWING # S, OPGW SPLICE LOCATION | LRK |
| 0 | 10/04/12 | MFJ | ISSUED FOR CONSTRUCTION | LRK |



8000 S. CHESTER STREET
 SUITE 500
 CENTENNIAL, CO 80112

A STANLEY GROUP COMPANY
 ENGINEERING, ENVIRONMENTAL AND
 CONSTRUCTION SERVICES - WORLDWIDE

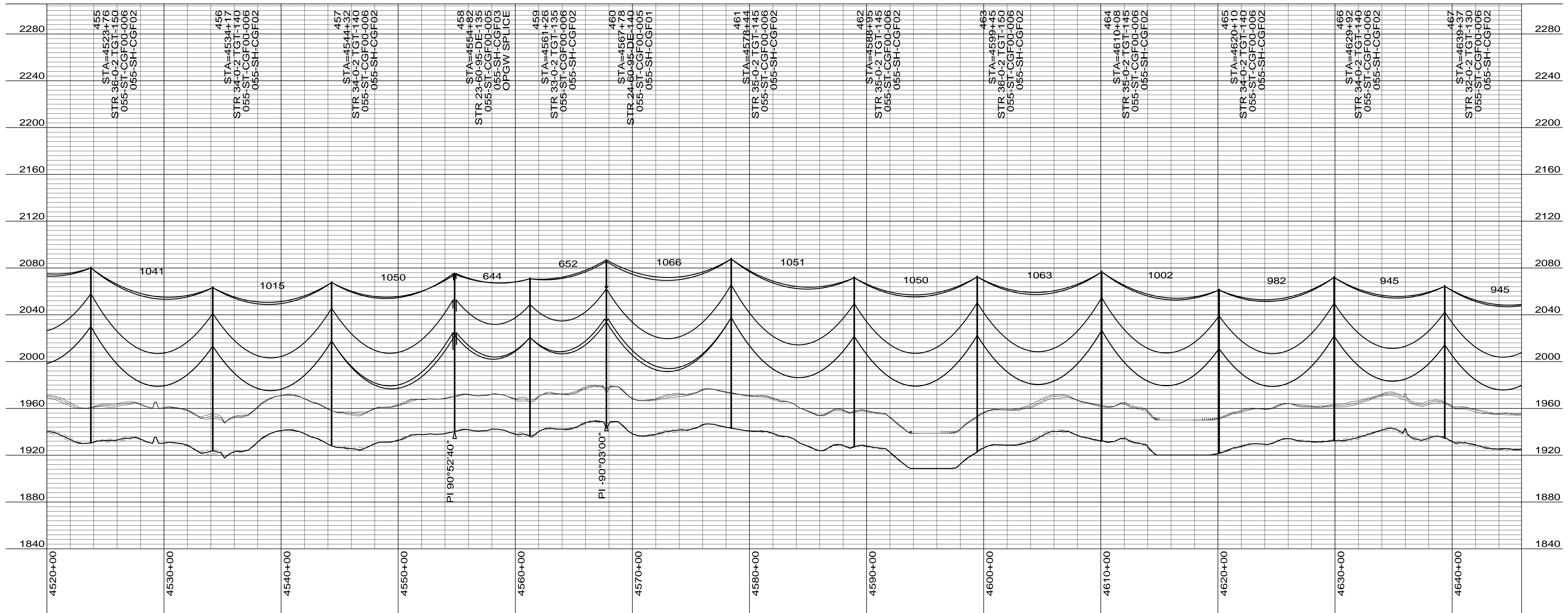
DESIGNED L.R.KETTER
 DRAWN B.E.CAMPBELL
 CHECKED H.W.DILLABOUGH
 APPROVED K.J.HARROLD
 APPROVED
 DATE 10/04/2012



WELLS COUNTY

400.0 FT. HORIZ. SCALE
 40.0 FT. VERT. SCALE

| DRAWING | REV |
|------------------|-----|
| 055-PP-WL443-001 | 2 |



CONDUCTOR: 959.6 KCMIL SUWANNEE ACSR/TW DISPLAYED @ EXTREME ICE, NO WIND; CLEARANCE: 30 FT
 OPGW: 49F69S - 24 STRAND, DISPLAYED @ -30 DEGREES F
 SHIELD WIRE: 1/2" EHS STEEL, DISPLAYED @ -30 DEGREES F

| REV | DATE | APP | DESCRIPTION | DFTR |
|-----|----------|-----|---|------|
| 2 | 11/26/14 | KJH | RECORD DRAWING | BEC |
| 1 | 03/29/13 | HWD | ADDED STR & FR DRAWING # 'S, OPGW SPLICE LOCATION | LRK |
| 0 | 10/04/12 | MFJ | ISSUED FOR CONSTRUCTION | LRK |



Stanley Consultants INC.

8000 S. CHESTER STREET
 SUITE 500
 CENTENNIAL, CO 80112

A STANLEY GROUP COMPANY
 ENGINEERING, ENVIRONMENTAL AND
 CONSTRUCTION SERVICES - WORLDWIDE

DESIGNED L.R.KETTER
 DRAWN B.E.CAMPBELL
 CHECKED H.W.DILLABOUGH
 APPROVED K.J.HARROLD
 APPROVED
 DATE 10/04/2012

Center to Grand Forks Project

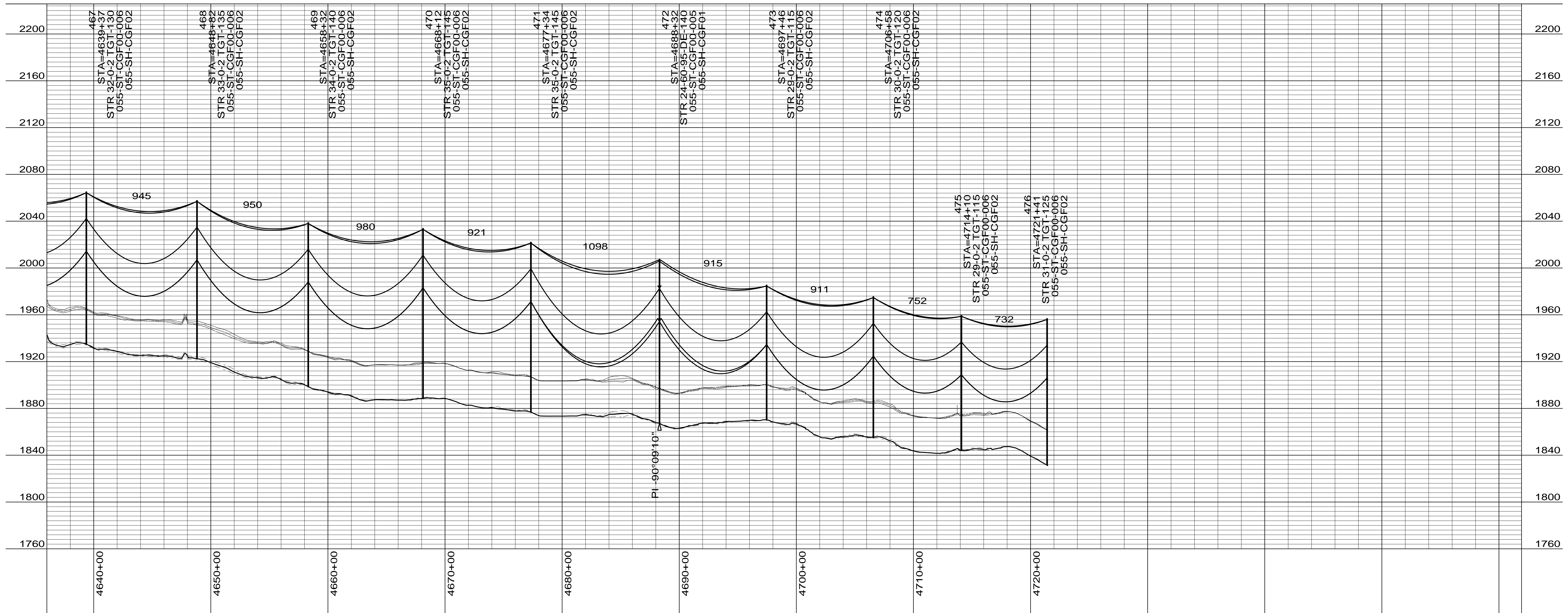
Minnkota Power
 COOPERATIVE, INC.

WELLS COUNTY

400.0 FT. HORIZ. SCALE
 40.0 FT. VERT. SCALE



| DRAWING | REV |
|------------------|-----|
| 055-PP-WL455-002 | 2 |



CONDUCTOR: 959.6 KCMIL SUWANNEE ACSR/TW DISPLAYED @ EXTREME ICE, NO WIND; CLEARANCE: 30 FT
 OPGW: 49F69S - 24 STRAND, DISPLAYED @ -30 DEGREES F
 SHIELD WIRE: 1/2" EHS STEEL, DISPLAYED @ -30 DEGREES F

| REV | DATE | APP | DESCRIPTION | DFTR |
|-----|----------|-----|--|------|
| 3 | 11/26/14 | KJH | RECORD DRAWING | BEC |
| 2 | 06/11/13 | HWD | MOVED STRUCTURE 475 35' NORTH | KJH |
| 1 | 03/29/13 | HWD | ADDED STR & FR DRAWING # S, OPGW SPLICE LOCATION | LRK |

8000 S. CHESTER STREET
 SUITE 500
 CENTENNIAL, CO 80112

A STANLEY GROUP COMPANY
 ENGINEERING, ENVIRONMENTAL AND
 CONSTRUCTION SERVICES - WORLDWIDE

DESIGNED L.R.KETTER
 DRAWN B.E.CAMPBELL
 CHECKED H.W.DILLABOUGH
 APPROVED K.J.HARROLD
 APPROVED
 DATE 10/04/2012

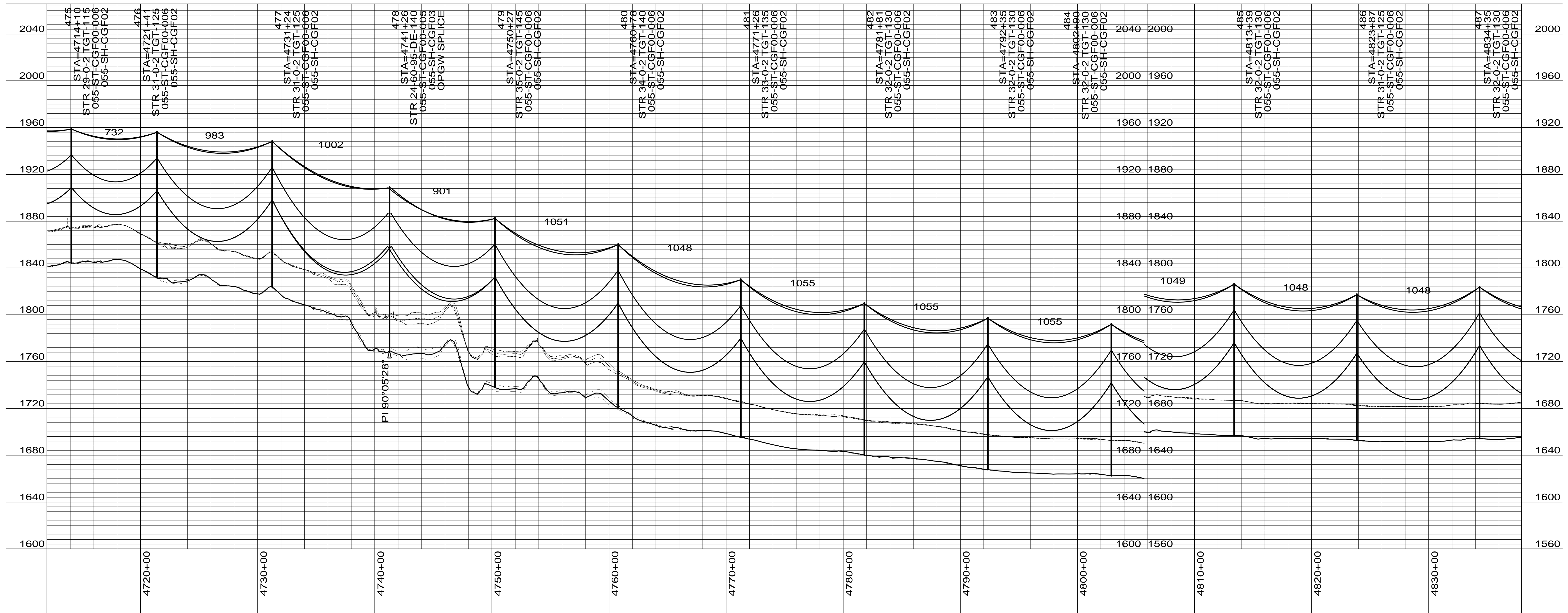
Center to Grand Forks Project

COOPERATIVE, INC.

WELLS COUNTY

400.0 FT. HORIZ. SCALE
 40.0 FT. VERT. SCALE

| DRAWING | REV |
|------------------|-----|
| 055-PP-WL467-003 | 3 |



CONDUCTOR: 959.6 KCMIL SUWANNEE ACSR/TW DISPLAYED @ EXTREME ICE, NO WIND; CLEARANCE: 30 FT
 OPGW: 49F69S - 24 STRAND, DISPLAYED @ -30 DEGREES F
 SHIELD WIRE: 1/2" EHS STEEL, DISPLAYED @ -30 DEGREES F

| REV | DATE | APP | DESCRIPTION | DFTR |
|-----|----------|-----|---|------|
| 2 | 11/26/14 | KJH | RECORD DRAWING | BEC |
| 1 | 03/29/13 | HWD | ADDED STR & FR DRAWING # S, OPGW SPLICE LOCATIONS | LRK |
| 0 | 10/04/12 | MFJ | ISSUED FOR CONSTRUCTION | LRK |

8000 S. CHESTER STREET
 SUITE 500
 CENTENNIAL, CO 80112

A STANLEY GROUP COMPANY
 ENGINEERING, ENVIRONMENTAL AND
 CONSTRUCTION SERVICES - WORLDWIDE

DESIGNED L.R.KETTER
 DRAWN B.E.CAMPBELL
 CHECKED H.W.DILLABOUGH
 APPROVED J.J.HARROLD
 APPROVED
 DATE 10/04/2012

Center to Grand Forks Project

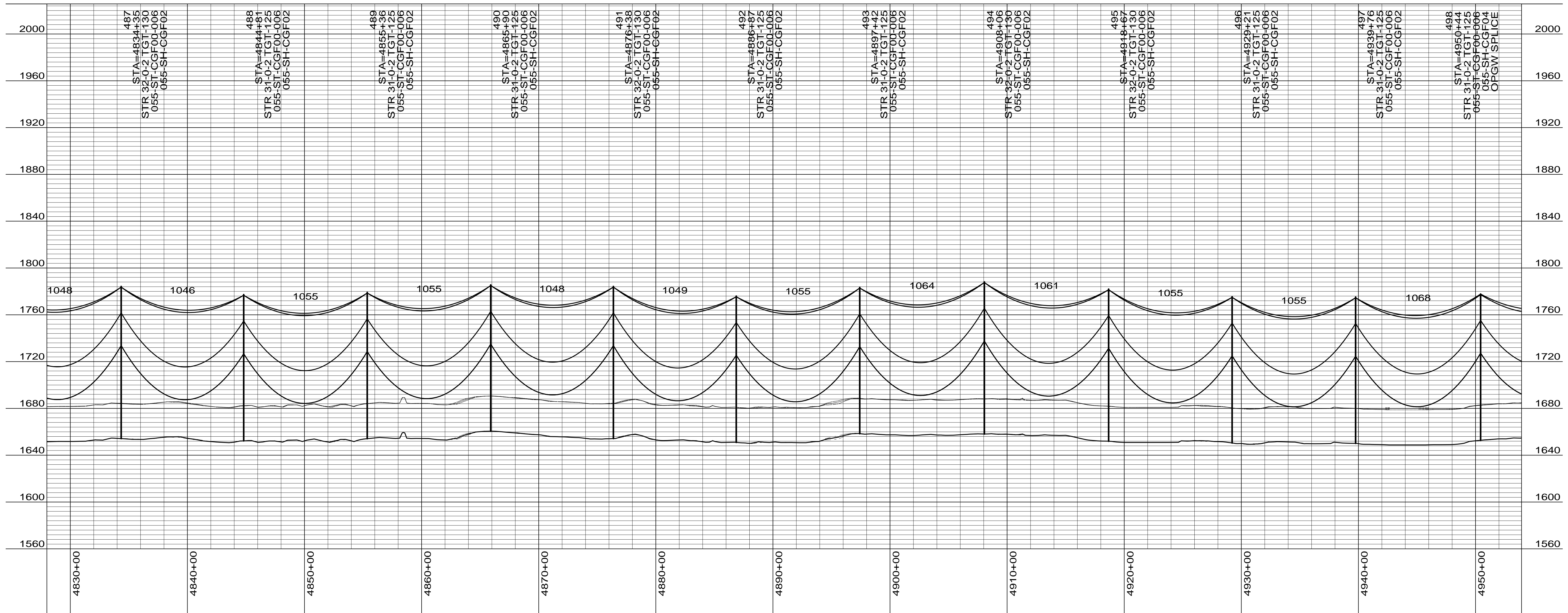
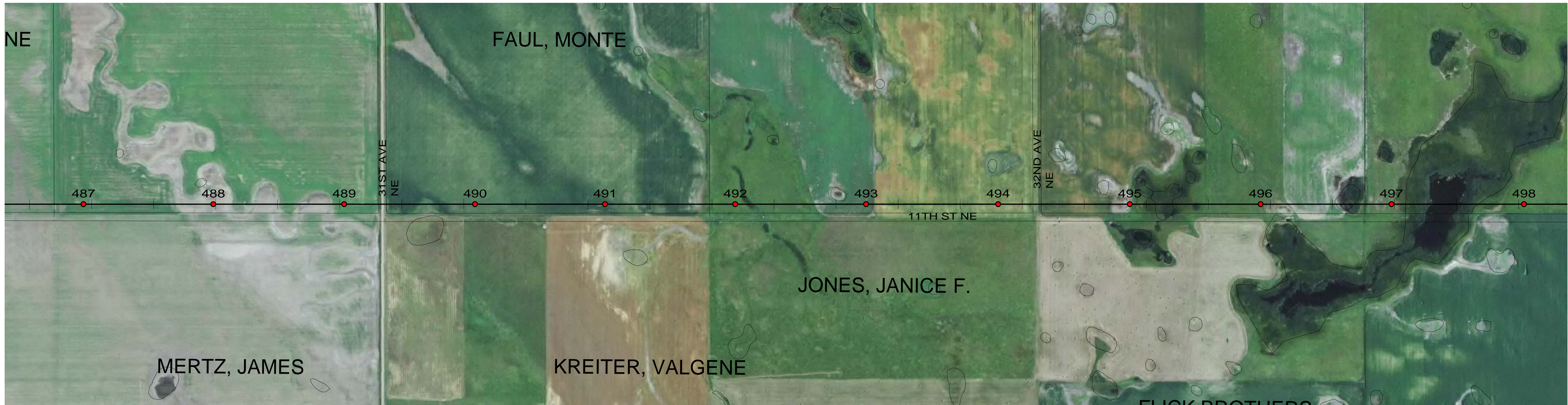
COOPERATIVE, INC.

WELLS COUNTY

400.0 FT. HORIZ. SCALE
 40.0 FT. VERT. SCALE

DRAWING
 055-PP-WL475-004

REV
 2



CONDUCTOR: 959.6 KCMIL SUWANNEE ACSR/TW DISPLAYED @ EXTREME ICE, NO WIND; CLEARANCE: 30 FT
 OPGW: 49F69S - 24 STRAND, DISPLAYED @ -30 DEGREES F
 SHIELD WIRE: 1/2" EHS STEEL, DISPLAYED @ -30 DEGREES F

| REV | DATE | APP | DESCRIPTION | DFTR |
|-----|----------|-----|---|------|
| 2 | 11/26/14 | KJH | RECORD DRAWING | BEC |
| 1 | 03/29/13 | HWD | ADDED STR & FR DRAWING # 'S, OPGW SPLICE LOCATION | LRK |
| 0 | 10/04/12 | MFJ | ISSUED FOR CONSTRUCTION | LRK |



Stanley Consultants INC.

8000 S. CHESTER STREET
 SUITE 500
 CENTENNIAL, CO 80112

A STANLEY GROUP COMPANY
 ENGINEERING, ENVIRONMENTAL AND
 CONSTRUCTION SERVICES - WORLDWIDE

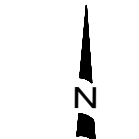
DESIGNED L.R.KETTER
 DRAWN B.E.CAMPBELL
 CHECKED H.W.DILLABOUGH
 APPROVED K.J.HARROLD
 APPROVED
 DATE 10/04/2012

Center to Grand Forks Project

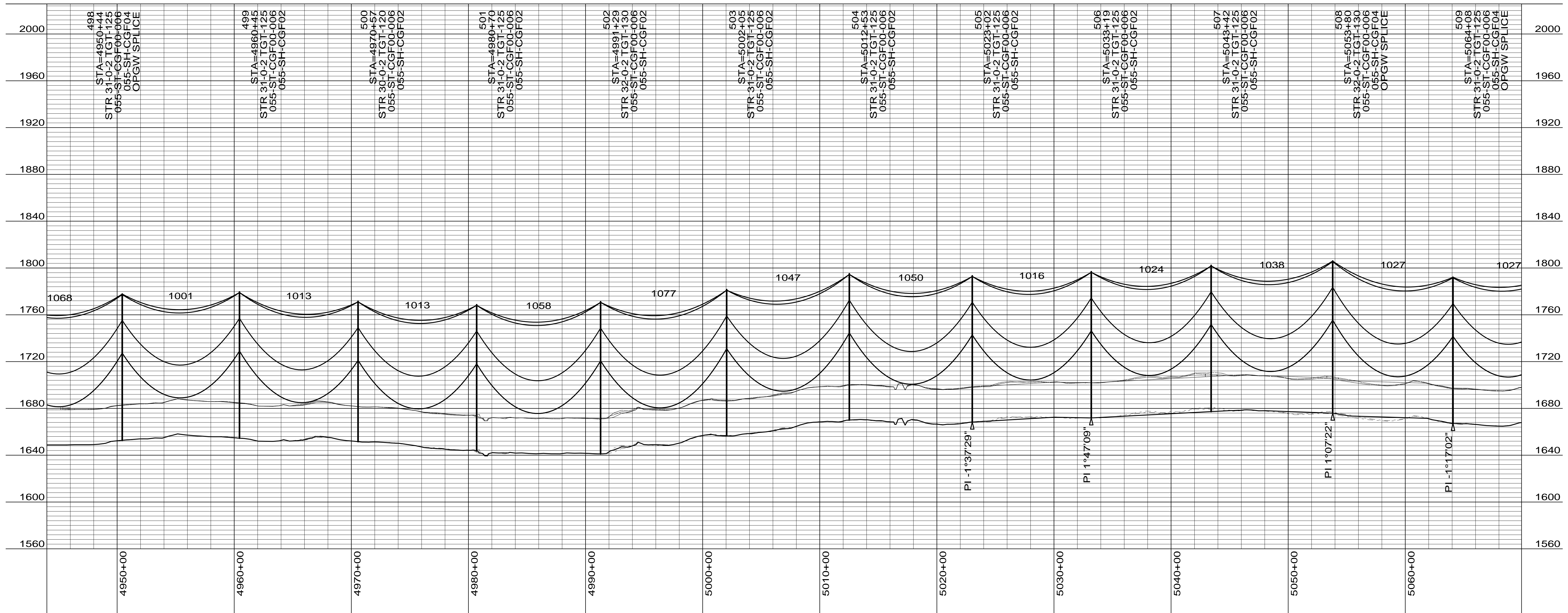
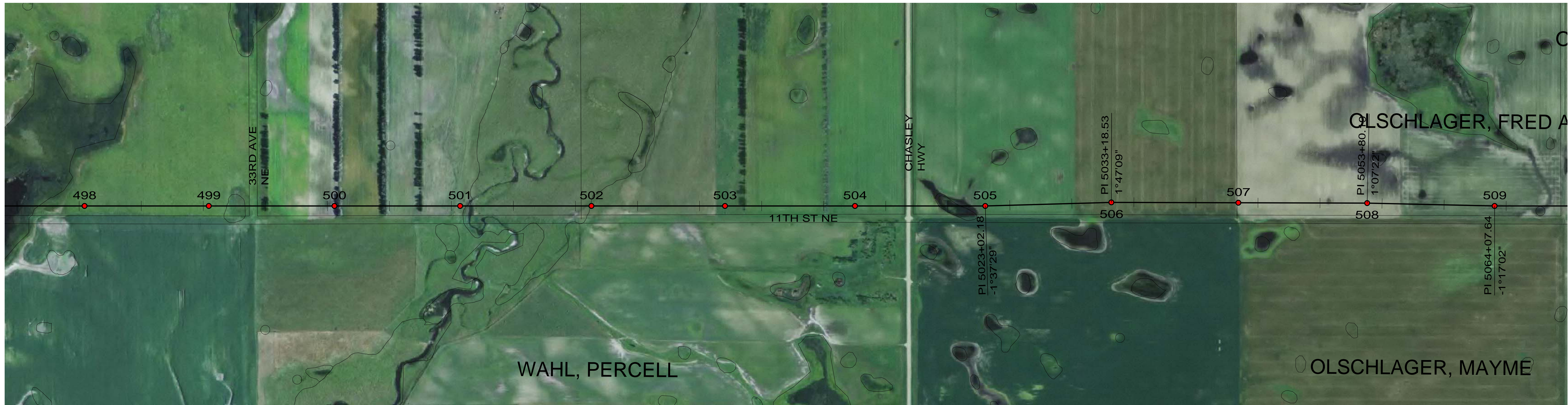
COOPERATIVE, INC.

WELLS COUNTY

400.0 FT. HORIZ. SCALE
 40.0 FT. VERT. SCALE



| DRAWING | REV |
|------------------|-----|
| 055-PP-WL487-005 | 2 |



CONDUCTOR: 959.6 KCMIL SUWANNEE ACSR/TW DISPLAYED @ EXTREME ICE, NO WIND; CLEARANCE: 30 FT
 OPGW: 49F69S - 24 STRAND, DISPLAYED @ -30 DEGREES F
 SHIELD WIRE: 1/2" EHS STEEL, DISPLAYED @ -30 DEGREES F

| REV | DATE | APP | DESCRIPTION | DFTR |
|-----|----------|-----|---|------|
| 4 | 11/26/14 | KJH | RECORD DRAWING | BEC |
| 3 | 08/22/14 | KJH | ADDED OPGW SPLICE BOXES AT STR. 508 AND 509 | KJH |
| 2 | 12/09/13 | MFJ | MOVED STRUCTURES 506, 507, 508 NORTH | KJH |



Stanley Consultants Inc.
 8000 S. CHESTER STREET
 SUITE 500
 CENTENNIAL, CO 80112

A STANLEY GROUP COMPANY
 ENGINEERING, ENVIRONMENTAL AND
 CONSTRUCTION SERVICES - WORLDWIDE

DESIGNED L.R.KETTER
 DRAWN B.E.CAMPBELL
 CHECKED H.W.DILLABOUGH
 APPROVED K.J.HARROLD
 APPROVED
 DATE 10/04/2012

Center to Grand Forks Project



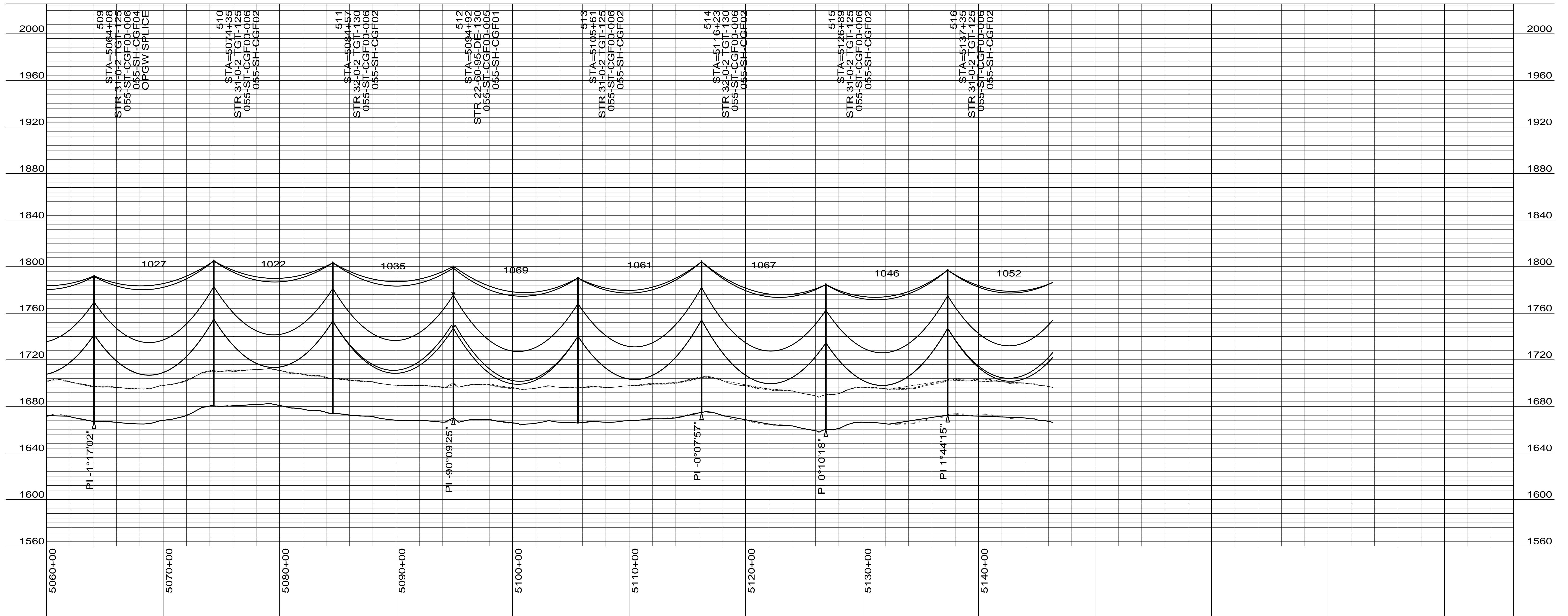
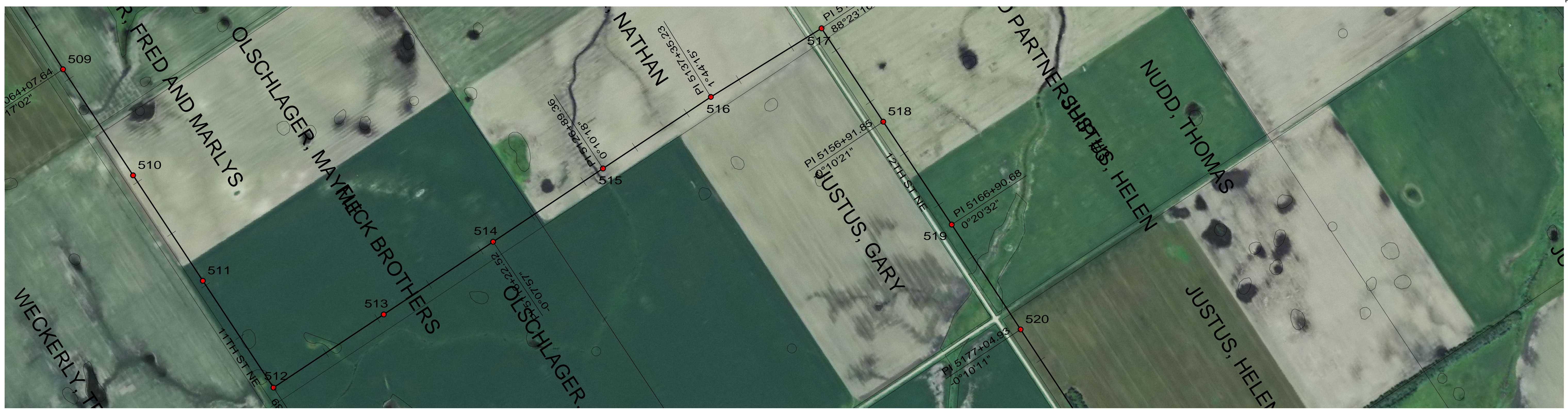
Minnkota Power
 COOPERATIVE, INC.

WELLS COUNTY

400.0 FT. HORIZ. SCALE
 40.0 FT. VERT. SCALE

DRAWING
055-PP-WL498-006

REV
4



CONDUCTOR: 959.6 KCMIL SUWANNEE ACSR/TW DISPLAYED @ EXTREME ICE, NO WIND; CLEARANCE: 30 FT
 OPGW: 49F69S - 24 STRAND, DISPLAYED @ -30 DEGREES F
 SHIELD WIRE: 1/2" EHS STEEL, DISPLAYED @ -30 DEGREES F

| REV | DATE | APP | DESCRIPTION | DFTR |
|-----|----------|-----|--|------|
| 4 | 11/26/14 | KJH | RECORD DRAWING | BEC |
| 3 | 08/22/14 | KJH | ADDED OPGW SPLICE BOXES AT STR. 508 AND 509 | KJH |
| 2 | 12/09/13 | MFJ | MOVED STRUCTURES 506, 507, 508 NORTH. STRUCTURES 515, 516 WEST | KJH |

Stanley Consultants INC.

8000 S. CHESTER STREET
 SUITE 500
 CENTENNIAL, CO 80112

A STANLEY GROUP COMPANY
 ENGINEERING, ENVIRONMENTAL AND
 CONSTRUCTION SERVICES - WORLDWIDE

DESIGNED L.R.KETTER
 DRAWN B.E.CAMPBELL
 CHECKED H.W.DILLABOUGH
 APPROVED K.J.HARROLD
 APPROVED
 DATE 10/04/2012

Center to Grand Forks Project

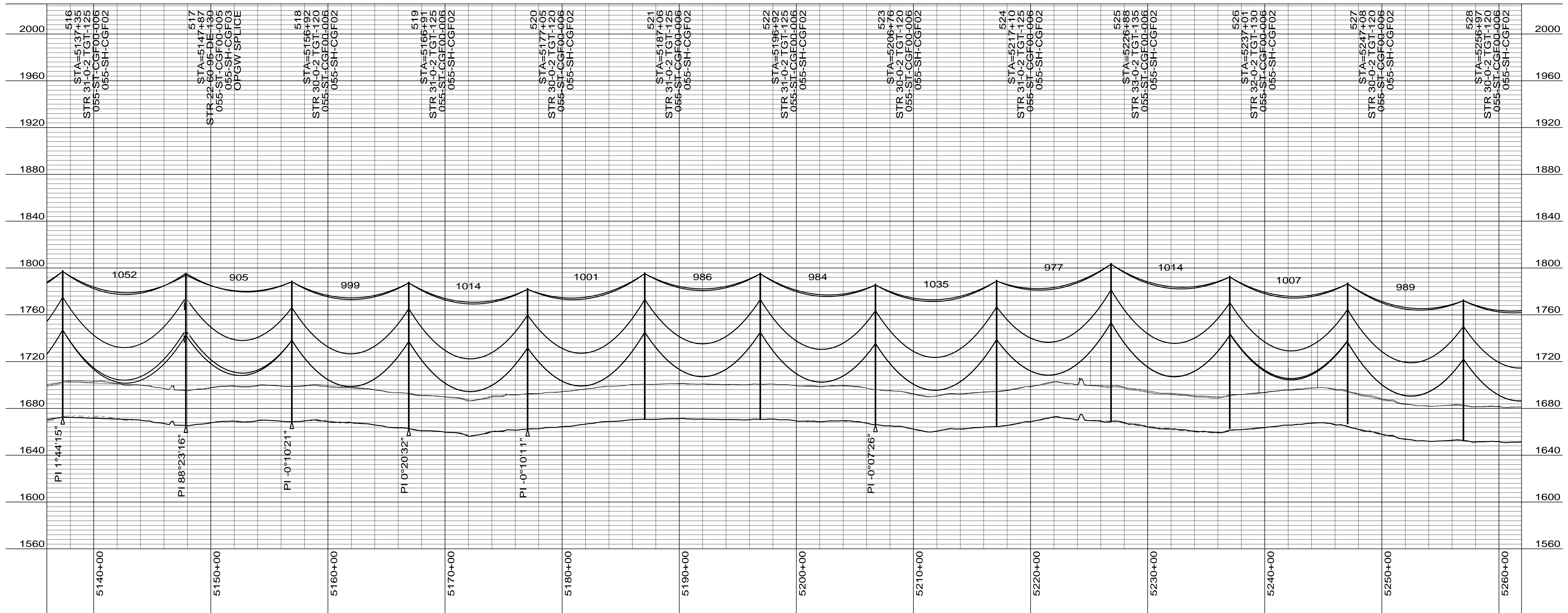
Minnkota Power
 COOPERATIVE, INC.

WELLS COUNTY

400.0 FT. HORIZ. SCALE
 40.0 FT. VERT. SCALE

DRAWING
 055-PP-WL509-007

REV
 4



CONDUCTOR: 959.6 KCMIL SUWANNEE ACSR/TW DISPLAYED @ EXTREME ICE, NO WIND; CLEARANCE: 30 FT
 OPGW: 49F69S - 24 STRAND, DISPLAYED @ -30 DEGREES F
 SHIELD WIRE: 1/2" EHS STEEL, DISPLAYED @ -30 DEGREES F

| REV | DATE | APP | DESCRIPTION | DFTR |
|-----|----------|-----|--|------|
| 3 | 11/26/14 | KJH | RECORD DRAWING | BEC |
| 2 | 12/09/13 | MFJ | MOVED STRUCTURES 515, 516 WEST | KJH |
| 1 | 03/29/13 | HWD | ADDED STR & FR DRAWING # S, OPGW SPLICE LOCATION | LRK |

8000 S. CHESTER STREET
 SUITE 500
 CENTENNIAL, CO 80112

A STANLEY GROUP COMPANY
 ENGINEERING, ENVIRONMENTAL AND
 CONSTRUCTION SERVICES - WORLDWIDE

DESIGNED L.R.KETTER
 DRAWN B.E.CAMPBELL
 CHECKED H.W.DILLABOUGH
 APPROVED K.J.HARROLD
 DATE 10/04/2012

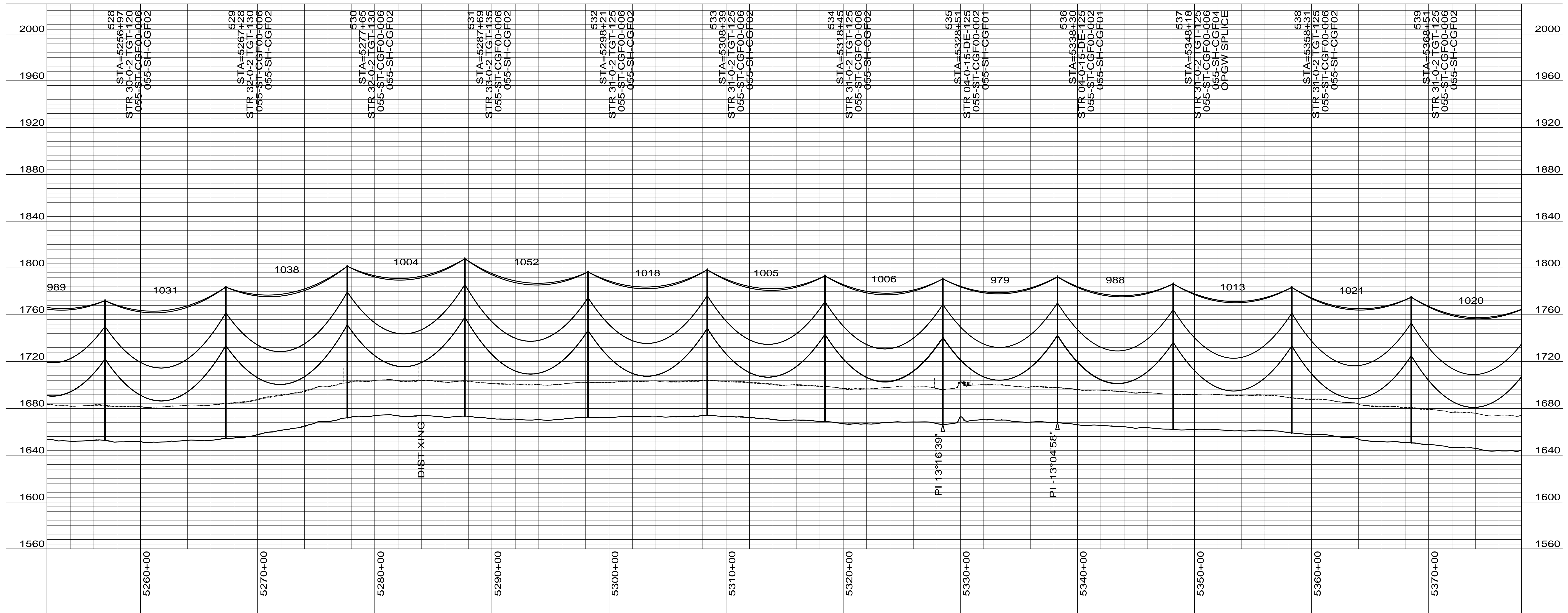
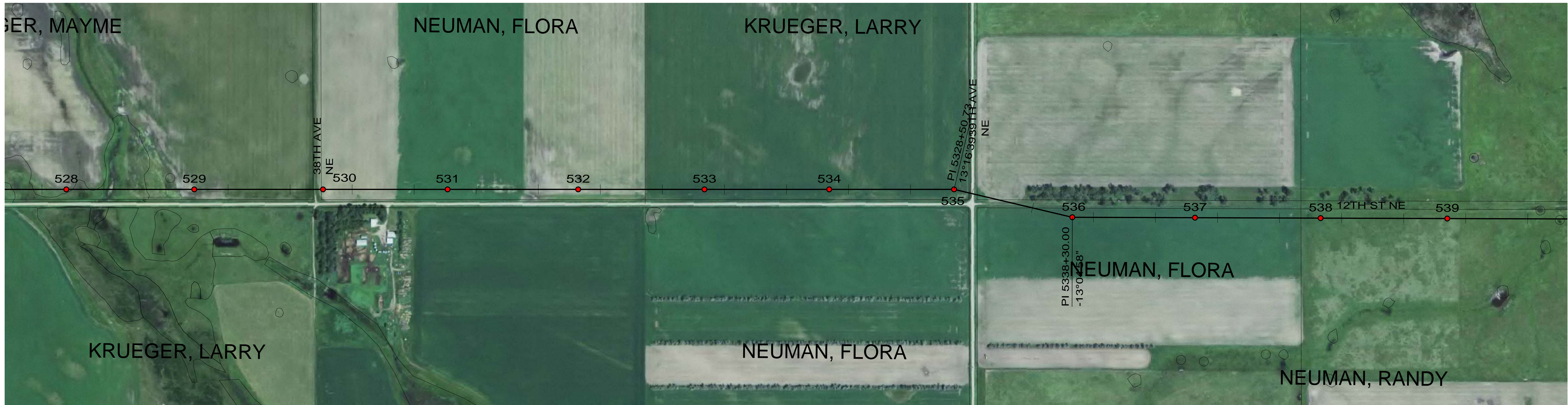
Center to Grand Forks Project

COOPERATIVE, INC.

WELLS COUNTY

400.0 FT. HORIZ. SCALE
 40.0 FT. VERT. SCALE

DRAWING 055-PP-WL516-008
 REV 3



CONDUCTOR: 959.6 KCMIL SUWANNEE ACSR/TW DISPLAYED @ EXTREME ICE, NO WIND; CLEARANCE: 30 FT
 OPGW: 49F69S - 24 STRAND, DISPLAYED @ -30 DEGREES F
 SHIELD WIRE: 1/2" EHS STEEL, DISPLAYED @ -30 DEGREES F

| REV | DATE | APP | DESCRIPTION | DFTR |
|-----|----------|-----|---|------|
| 2 | 11/26/14 | KJH | RECORD DRAWING | BEC |
| 1 | 03/29/13 | HWD | ADDED STR & FR DRAWING # 'S, OPGW SPLICE LOCATION | LRK |
| 0 | 10/04/12 | MFJ | ISSUED FOR CONSTRUCTION | LRK |



Stanley Consultants Inc.
 8000 S. CHESTER STREET
 SUITE 500
 CENTENNIAL, CO 80112

A STANLEY GROUP COMPANY
 ENGINEERING, ENVIRONMENTAL AND
 CONSTRUCTION SERVICES - WORLDWIDE

DESIGNED L.R.KETTER
 DRAWN B.E.CAMPBELL
 CHECKED H.W.DILLABOUGH
 APPROVED K.J.HARROLD
 APPROVED
 DATE 10/04/2012

Center to Grand Forks Project



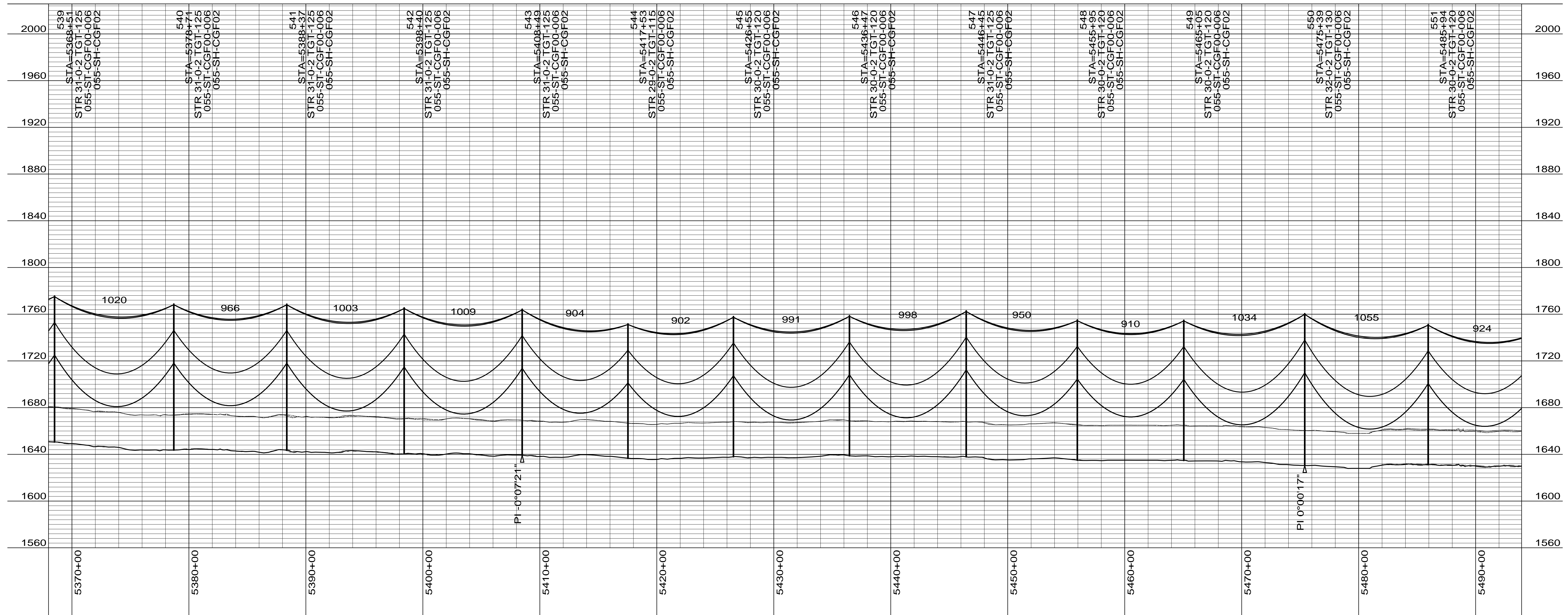
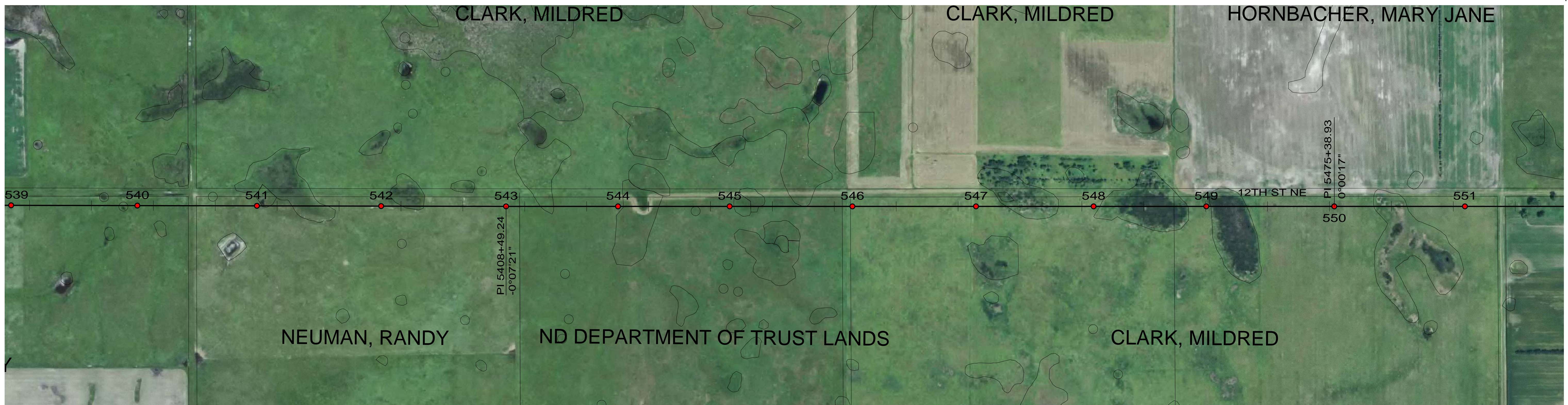
Minnkota Power
 COOPERATIVE, INC.

WELLS COUNTY

400.0 FT. HORIZ. SCALE
 40.0 FT. VERT. SCALE

DRAWING
055-PP-WL528-009

REV
2



CONDUCTOR: 959.6 KCMIL SUWANNEE ACSR/TW DISPLAYED @ EXTREME ICE, NO WIND; CLEARANCE: 30 FT
 OPGW: 49F69S - 24 STRAND, DISPLAYED @ -30 DEGREES F
 SHIELD WIRE: 1/2" EHS STEEL, DISPLAYED @ -30 DEGREES F

| REV | DATE | APP | DESCRIPTION | DFTR |
|-----|----------|-----|--|------|
| 2 | 11/26/14 | KJH | RECORD DRAWING | BEC |
| 1 | 03/29/13 | HWD | ADDED STR & FR DRAWING # S, OPGW SPLICE LOCATION | LRK |
| 0 | 10/04/12 | MFJ | ISSUED FOR CONSTRUCTION | LRK |



Stanley Consultants INC.

8000 S. CHESTER STREET
 SUITE 500
 CENTENNIAL, CO 80112

A STANLEY GROUP COMPANY
 ENGINEERING, ENVIRONMENTAL AND
 CONSTRUCTION SERVICES - WORLDWIDE

DESIGNED L.R.KETTER
 DRAWN B.E.CAMPBELL
 CHECKED H.W.DILLABOUGH
 APPROVED K.J.HARROLD
 APPROVED
 DATE 10/04/2012

Center to Grand Forks Project

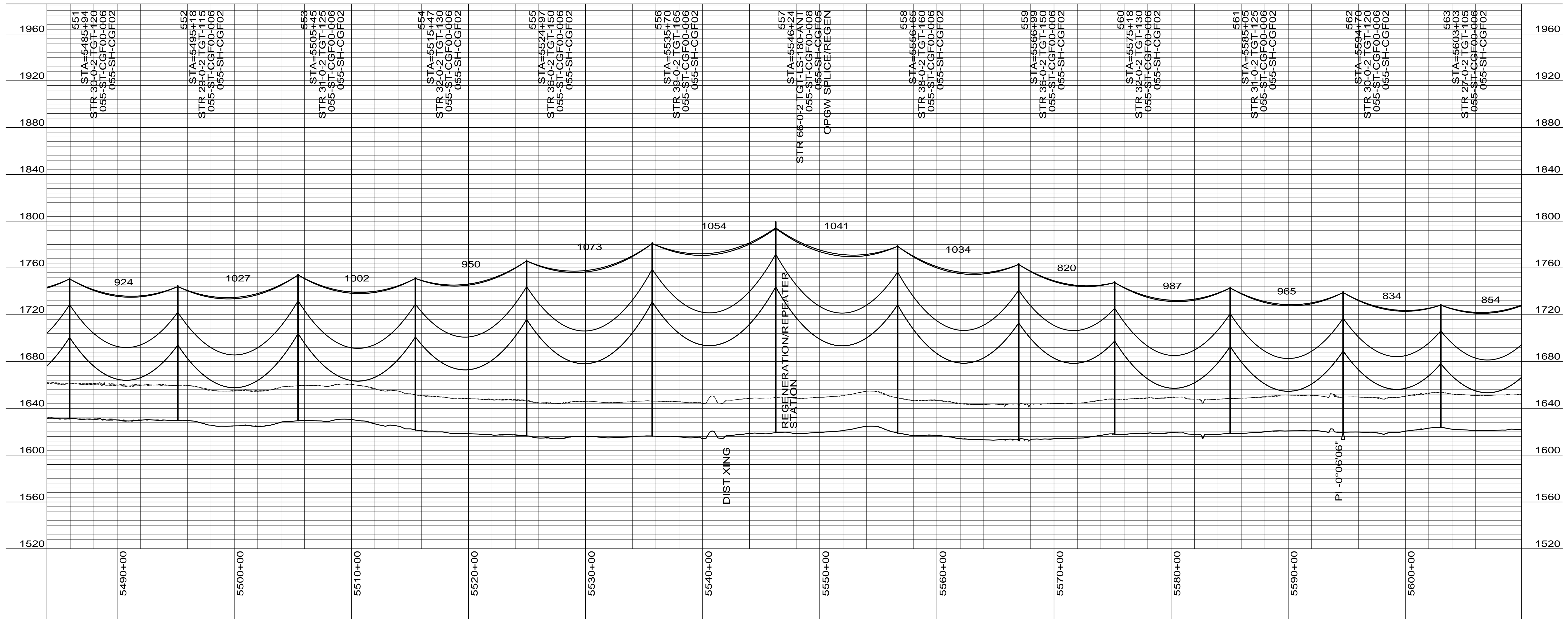


WELLS COUNTY

400.0 FT. HORIZ. SCALE
 40.0 FT. VERT. SCALE



| DRAWING | REV |
|------------------|-----|
| 055-PP-WL539-010 | 2 |



CONDUCTOR: 959.6 KCMIL SUWANNEE ACSR/TW DISPLAYED @ EXTREME ICE, NO WIND; CLEARANCE: 30 FT
 OPGW: 49F69S - 24 STRAND, DISPLAYED @ -30 DEGREES F
 SHIELD WIRE: 1/2" EHS STEEL, DISPLAYED @ -30 DEGREES F

| REV | DATE | APP | DESCRIPTION | DFTR |
|-----|----------|-----|--|------|
| 2 | 11/26/14 | KJH | RECORD DRAWING | BEC |
| 1 | 03/29/13 | HWD | ADDED STR & FR DRAWING # S, OPGW SPLICE LOCATION | LRK |
| 0 | 10/04/12 | MFJ | ISSUED FOR CONSTRUCTION | LRK |

8000 S. CHESTER STREET
 SUITE 500
 CENTENNIAL, CO 80112

A STANLEY GROUP COMPANY
 ENGINEERING, ENVIRONMENTAL AND
 CONSTRUCTION SERVICES - WORLDWIDE

DESIGNED L.R.KETTER
 DRAWN B.E.CAMPBELL
 CHECKED H.W.DILLABOUGH
 APPROVED K.J.HARROLD
 APPROVED
 DATE 10/04/2012

Center to Grand Forks Project

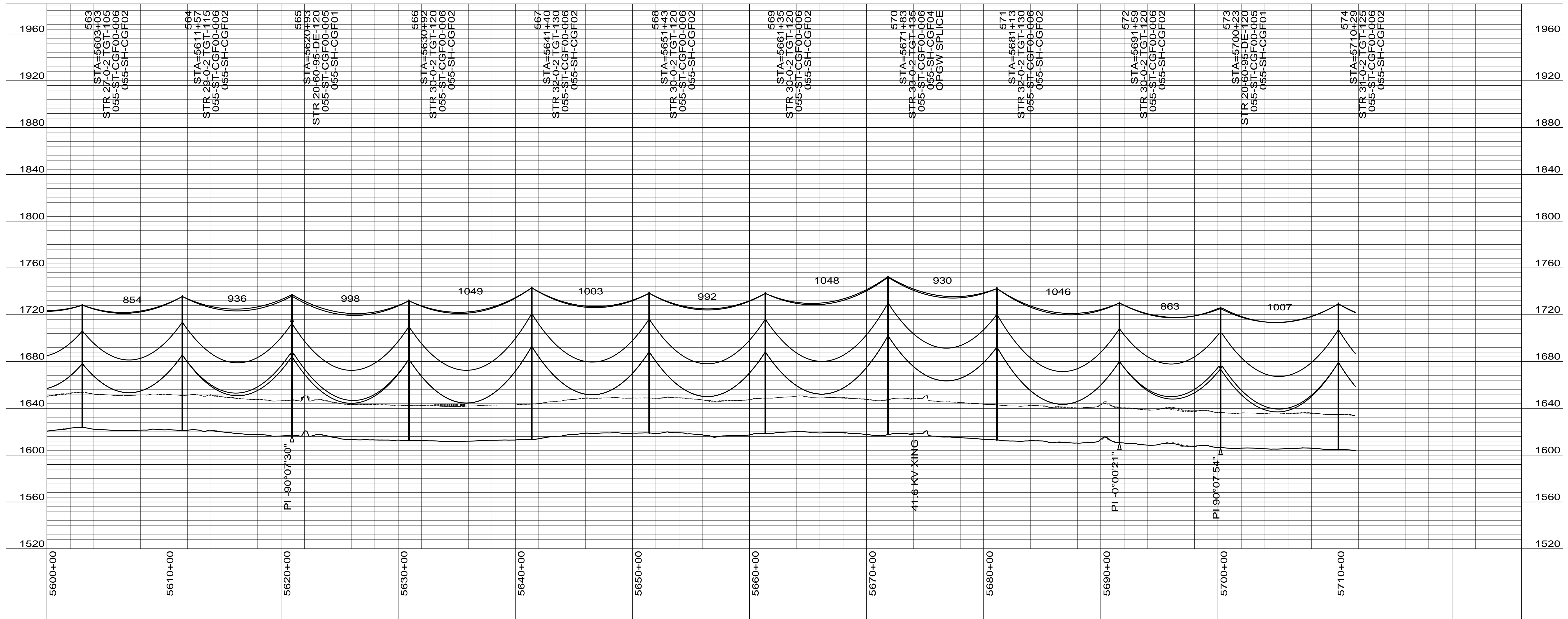
COOPERATIVE, INC.

WELLS COUNTY

400.0 FT. HORIZ. SCALE
 40.0 FT. VERT. SCALE

DRAWING
 055-PP-WL551-011

REV
 2



CONDUCTOR: 959.6 KCMIL SUWANNEE ACSR/TW DISPLAYED @ EXTREME ICE, NO WIND; CLEARANCE: 30 FT
 OPGW: 49F69S - 24 STRAND, DISPLAYED @ -30 DEGREES F
 SHIELD WIRE: 1/2" EHS STEEL, DISPLAYED @ -30 DEGREES F

| REV | DATE | APP | DESCRIPTION | DFTR |
|-----|----------|-----|--|------|
| 2 | 11/26/14 | KJH | RECORD DRAWING | BEC |
| 1 | 03/29/13 | HWD | ADDED STR & FR DRAWING # S, OPGW SPLICE LOCATION | LRK |
| 0 | 10/04/12 | MFJ | ISSUED FOR CONSTRUCTION | LRK |

8000 S. CHESTER STREET
 SUITE 500
 CENTENNIAL, CO 80112

A STANLEY GROUP COMPANY
 ENGINEERING, ENVIRONMENTAL AND
 CONSTRUCTION SERVICES - WORLDWIDE

DESIGNED L.R.KETTER
 DRAWN B.E.CAMPBELL
 CHECKED H.W.DILLABOUGH
 APPROVED K.J.HARROLD
 DATE 10/04/2012

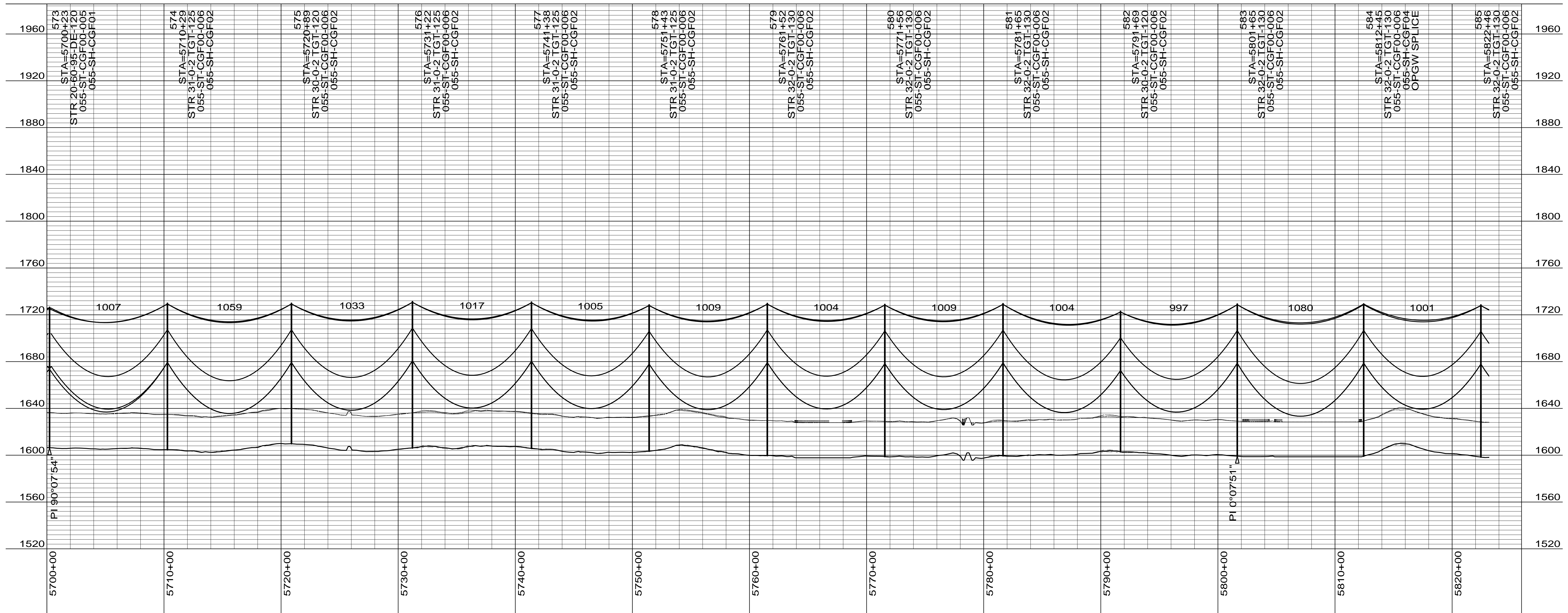
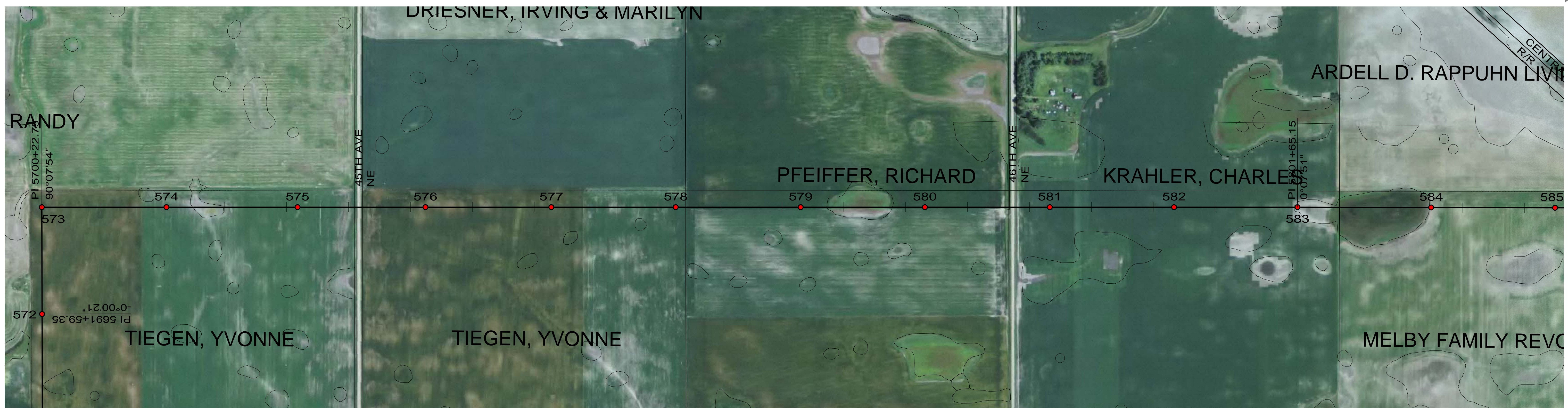
Center to Grand Forks Project

COOPERATIVE, INC.

WELLS COUNTY

400.0 FT. HORIZ. SCALE
 40.0 FT. VERT. SCALE

DRAWING 055-PP-WL563-012
 REV 2



CONDUCTOR: 959.6 KCMIL SUWANNEE ACSR/TW DISPLAYED @ EXTREME ICE, NO WIND; CLEARANCE: 30 FT
 OPGW: 49F69S - 24 STRAND, DISPLAYED @ -30 DEGREES F
 SHIELD WIRE: 1/2" EHS STEEL, DISPLAYED @ -30 DEGREES F

| REV | DATE | APP | DESCRIPTION | DFTR |
|-----|----------|-----|--|------|
| 2 | 11/26/14 | KJH | RECORD DRAWING | BEC |
| 1 | 03/29/13 | HWD | ADDED STR & FR DRAWING # S, OPGW SPLICE LOCATION | LRK |
| 0 | 10/04/12 | MFJ | ISSUED FOR CONSTRUCTION | LRK |

8000 S. CHESTER STREET
 SUITE 500
 CENTENNIAL, CO 80112

A STANLEY GROUP COMPANY
 ENGINEERING, ENVIRONMENTAL AND
 CONSTRUCTION SERVICES - WORLDWIDE

DESIGNED L.R.KETTER
 DRAWN B.E.CAMPBELL
 CHECKED H.W.DILLABOUGH
 APPROVED K.J.HARROLD
 DATE 10/04/2012

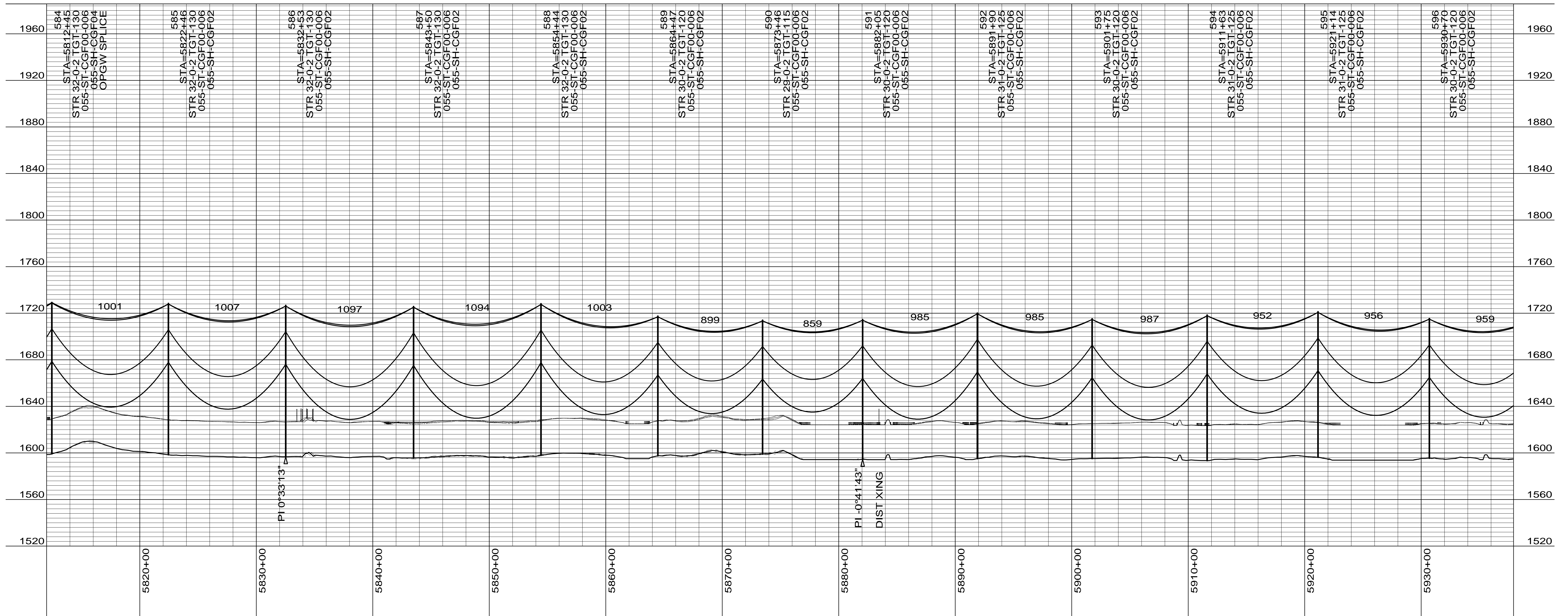
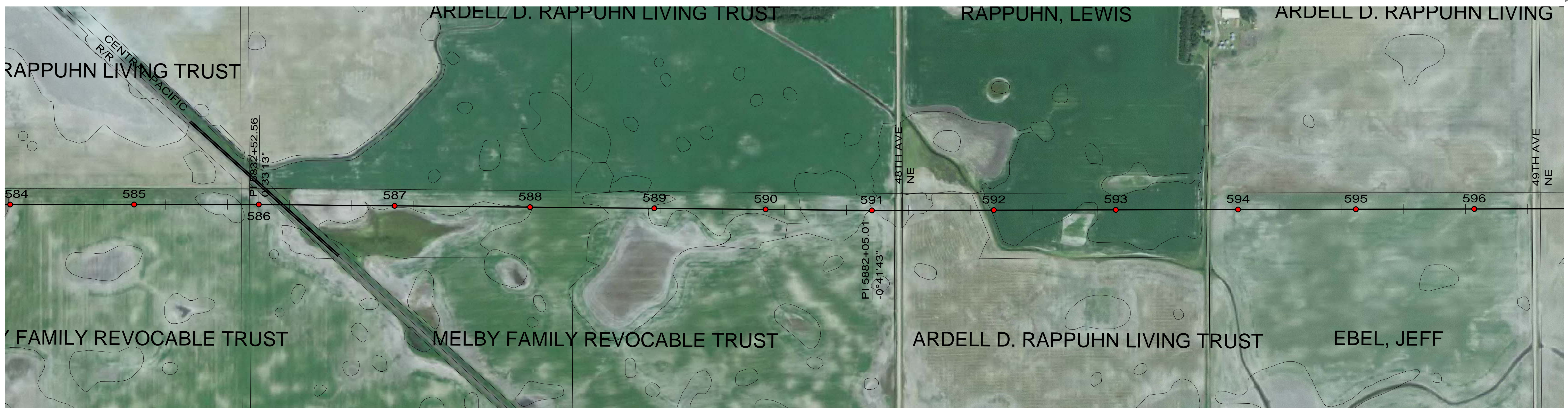
Center to Grand Forks Project

COOPERATIVE, INC.

WELLS COUNTY

400.0 FT. HORIZ. SCALE
 40.0 FT. VERT. SCALE

DRAWING REV
 055-PP-WL573-013 2



CONDUCTOR: 959.6 KCMIL SUWANNEE ACSR/TW DISPLAYED @ EXTREME ICE, NO WIND; CLEARANCE: 30 FT
 OPGW: 49F69S - 24 STRAND, DISPLAYED @ -30 DEGREES F
 SHIELD WIRE: 1/2" EHS STEEL, DISPLAYED @ -30 DEGREES F

| REV | DATE | APP | DESCRIPTION | DFTR |
|-----|----------|-----|--|------|
| 2 | 11/26/14 | KJH | RECORD DRAWING | BEC |
| 1 | 03/29/13 | HWD | ADDED STR & FR DRAWING # S, OPGW SPLICE LOCATION | LRK |
| 0 | 10/04/12 | MFJ | ISSUED FOR CONSTRUCTION | LRK |

8000 S. CHESTER STREET
 SUITE 500
 CENTENNIAL, CO 80112

A STANLEY GROUP COMPANY
 ENGINEERING, ENVIRONMENTAL AND
 CONSTRUCTION SERVICES - WORLDWIDE

DESIGNED L.R.KETTER
 DRAWN B.E.CAMPBELL
 CHECKED H.W.DILLABOUGH
 APPROVED K.J.HARROLD
 APPROVED
 DATE 10/04/2012

Center to Grand Forks Project

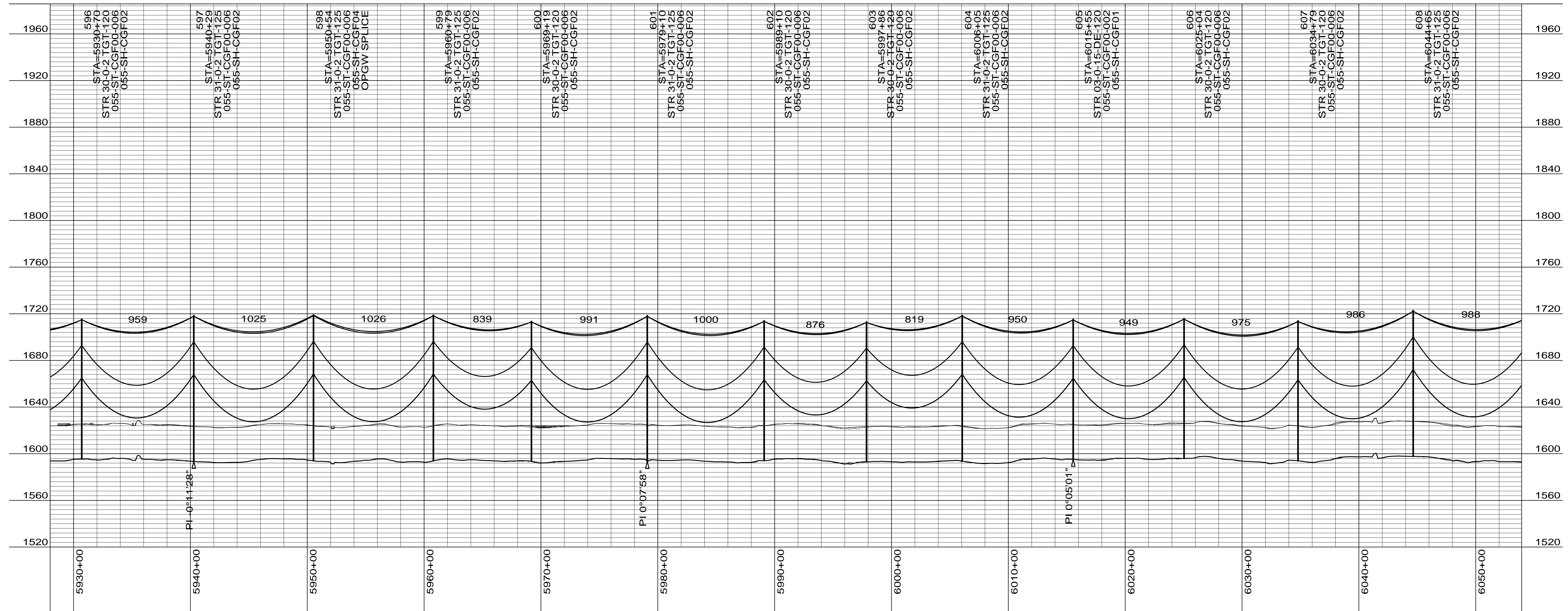
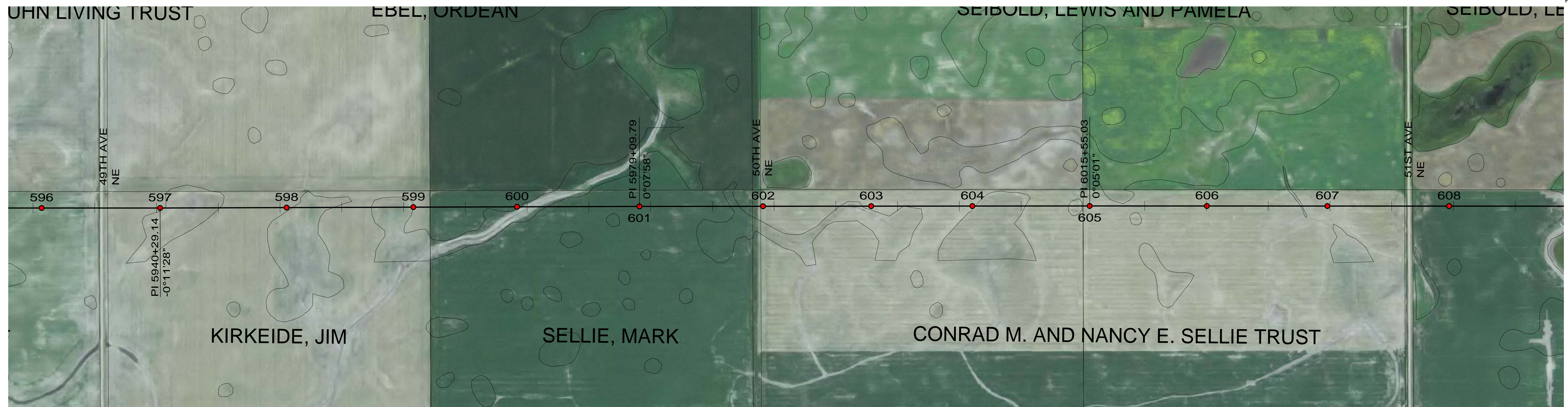
MPC COOPERATIVE, INC.

WELLS COUNTY

400.0 FT. HORIZ. SCALE
 40.0 FT. VERT. SCALE

DRAWING
 055-PP-WL584-014

REV
 2



CONDUCTOR: 959.6 KCMIL SUWANNEE ACSR/TW DISPLAYED @ EXTREME ICE, NO WIND; CLEARANCE: 30 FT
 OPGW: 49F69S - 24 STRAND, DISPLAYED @ -30 DEGREES F
 SHIELD WIRE: 1/2" EHS STEEL, DISPLAYED @ -30 DEGREES F

| REV | DATE | APP | DESCRIPTION | DFTR |
|-----|----------|-----|--|------|
| 2 | 11/26/14 | KJH | RECORD DRAWING | BEC |
| 1 | 03/29/13 | HWD | ADDED STR & FR DRAWING # S, OPGW SPLICE LOCATION | LRK |
| 0 | 10/04/12 | MFJ | ISSUED FOR CONSTRUCTION | LRK |



Stanley Consultants Inc.

8000 S. CHESTER STREET
 SUITE 500
 CENTENNIAL, CO 80112

A STANLEY GROUP COMPANY
 ENGINEERING, ENVIRONMENTAL AND
 CONSTRUCTION SERVICES - WORLDWIDE

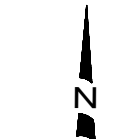
DESIGNED L.R.KETTER
 DRAWN B.E.CAMPBELL
 CHECKED H.W.DILLABOUGH
 APPROVED K.J.HARROLD
 APPROVED DATE 10/04/2012

Center to Grand Forks Project

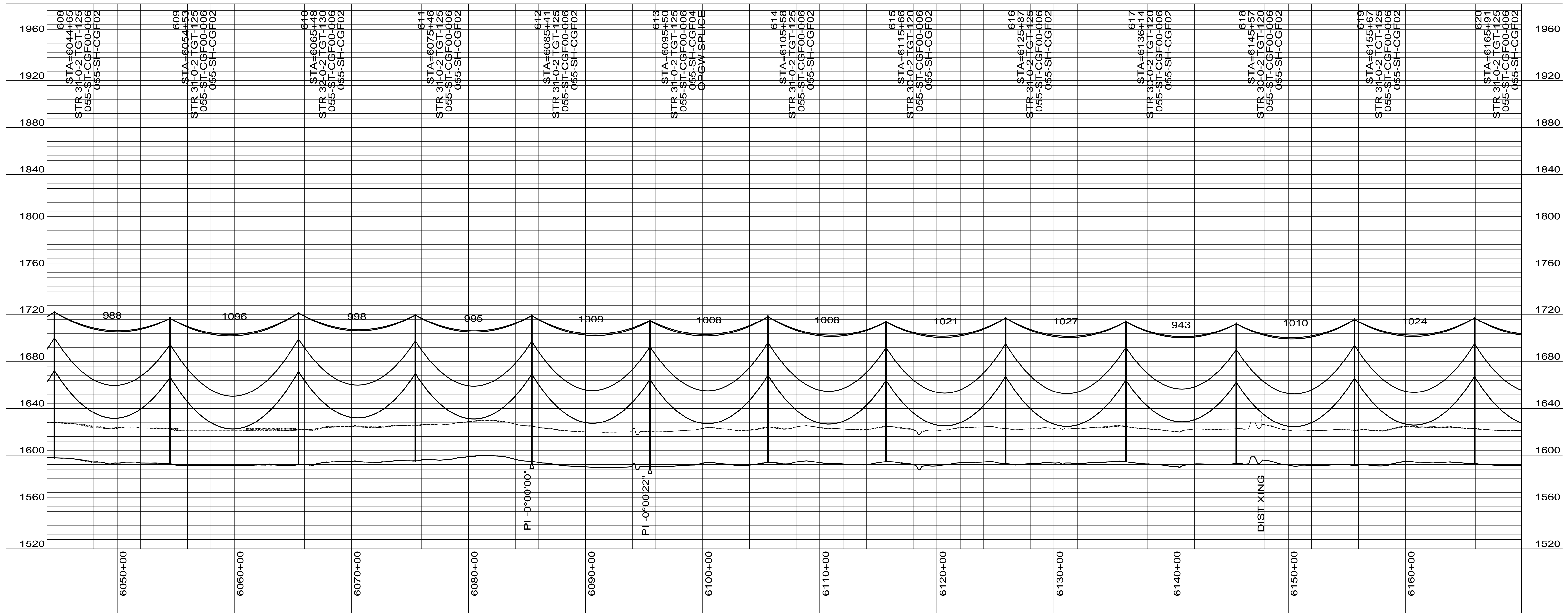


WELLS COUNTY

400.0 FT. HORIZ. SCALE
 40.0 FT. VERT. SCALE



| DRAWING | REV |
|------------------|-----|
| 055-PP-WL596-015 | 2 |



CONDUCTOR: 959.6 KCMIL SUWANNEE ACSR/TW DISPLAYED @ EXTREME ICE, NO WIND; CLEARANCE: 30 FT
 OPGW: 49F69S - 24 STRAND, DISPLAYED @ -30 DEGREES F
 SHIELD WIRE: 1/2" EHS STEEL, DISPLAYED @ -30 DEGREES F

| REV | DATE | APP | DESCRIPTION | DFTR |
|-----|----------|-----|--|------|
| 3 | 11/26/14 | KJH | RECORD DRAWING | BEC |
| 2 | 06/11/13 | HWD | MOVED STRUCTURE 613 10' EAST | KJH |
| 1 | 03/29/13 | HWD | ADDED STR & FR DRAWING # S, OPGW SPLICE LOCATION | LRK |



Stanley Consultants Inc.
 A STANLEY GROUP COMPANY
 ENGINEERING, ENVIRONMENTAL AND
 CONSTRUCTION SERVICES - WORLDWIDE

8000 S. CHESTER STREET
 SUITE 500
 CENTENNIAL, CO 80112

DESIGNED L.R.KETTER
 DRAWN B.E.CAMPBELL
 CHECKED H.W.DILLABOUGH
 APPROVED K.J.HARROLD
 DATE 10/04/2012

Center to Grand Forks Project



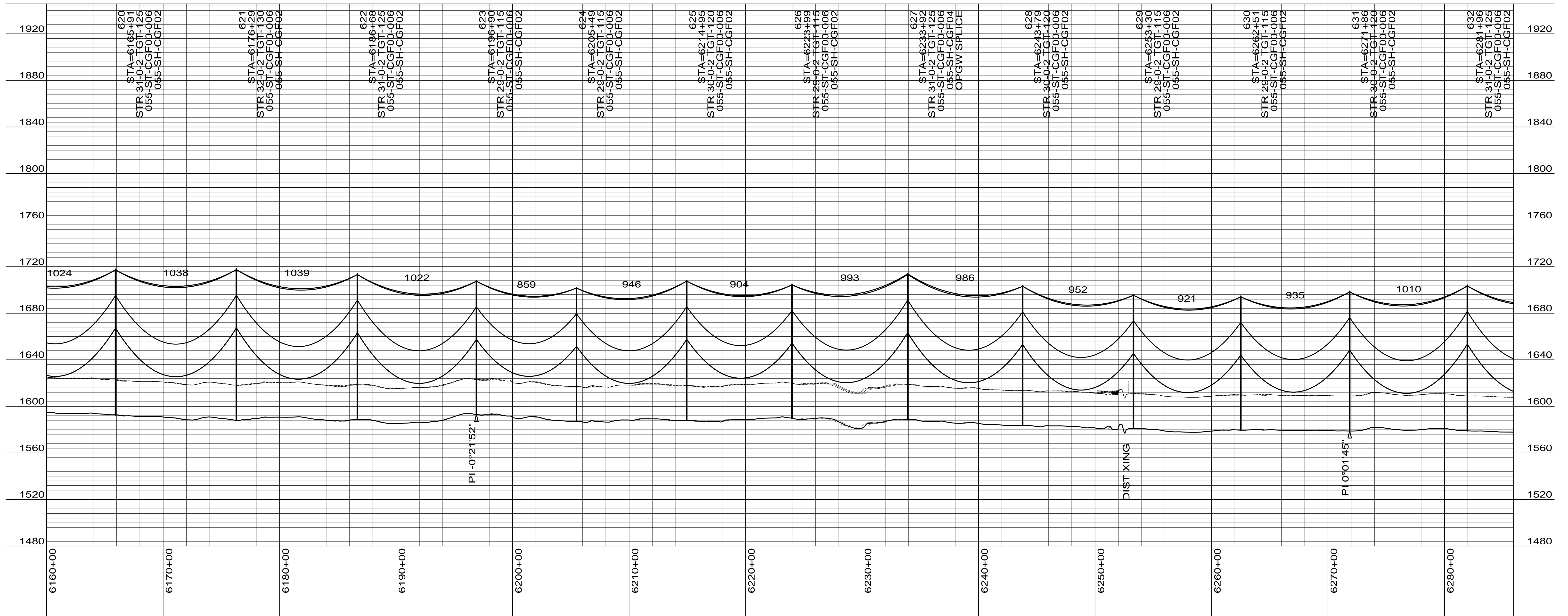
Minnkota Power
 COOPERATIVE, INC.

WELLS COUNTY

400.0 FT. HORIZ. SCALE
 40.0 FT. VERT. SCALE

DRAWING
 055-PP-WL608-016

REV
 3



CONDUCTOR: 959.6 KCMIL SUWANNEE ACSR/TW DISPLAYED @ EXTREME ICE, NO WIND; CLEARANCE: 30 FT
 OPGW: 49F69S - 24 STRAND, DISPLAYED @ -30 DEGREES F
 SHIELD WIRE: 1/2" EHS STEEL, DISPLAYED @ -30 DEGREES F


| REV | DATE | APP | DESCRIPTION | DFTR |
|-----|----------|-----|---|------|
| 2 | 11/26/14 | KJH | RECORD DRAWING | BEC |
| 1 | 03/29/13 | HWD | ADDED STR & FR DRAWING # 'S, OPGW SPLICE LOCATION | LRK |
| 0 | 10/04/12 | MFJ | ISSUED FOR CONSTRUCTION | LRK |


Stanley Consultants INC.
8000 S. CHESTER STREET
 SUITE 500
 CENTENNIAL, CO 80112
A STANLEY GROUP COMPANY
 ENGINEERING, ENVIRONMENTAL AND
 CONSTRUCTION SERVICES - WORLDWIDE

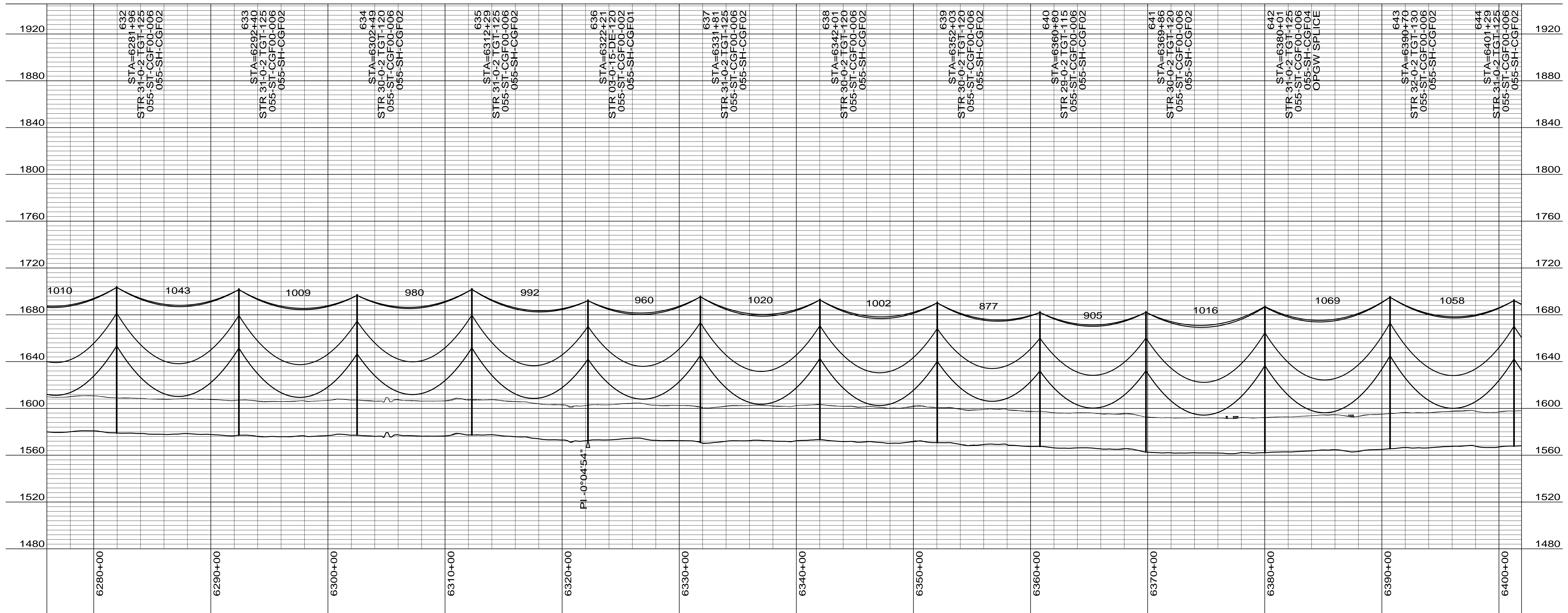
DESIGNED L.R.KETTER
 DRAWN B.E.CAMPBELL
 CHECKED H.W.DILLABOUGH
 APPROVED K.J.HARROLD
 APPROVED
 DATE 10/04/2012

Center to Grand Forks Project

MPC COOPERATIVE, INC.

WELLS COUNTY
 400.0 FT. HORIZ. SCALE
 40.0 FT. VERT. SCALE


| DRAWING | | REV |
|------------------|--|-----|
| 055-PP-WL620-017 | | 2 |



CONDUCTOR: 959.6 KCMIL SUWANNEE ACSR/TW DISPLAYED @ EXTREME ICE, NO WIND; CLEARANCE: 30 FT
 OPGW: 49F69S - 24 STRAND, DISPLAYED @ -30 DEGREES F
 SHIELD WIRE: 1/2" EHS STEEL, DISPLAYED @ -30 DEGREES F

| REV | DATE | APP | DESCRIPTION | DFTR |
|-----|----------|-----|--|------|
| 3 | 11/26/14 | KJH | RECORD DRAWING | BEC |
| 2 | 06/11/13 | HWD | MOVED STRUCTURE 637 18' WEST | KJH |
| 1 | 03/29/13 | HWD | ADDED STR & FR DRAWING # S, OPGW SPLICE LOCATION | LRK |



Stanley Consultants INC.

8000 S. CHESTER STREET
 SUITE 500
 CENTENNIAL, CO 80112

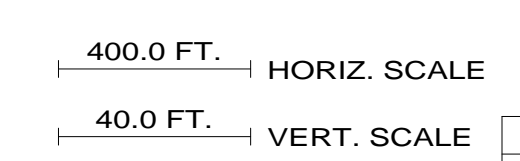
A STANLEY GROUP COMPANY
 ENGINEERING, ENVIRONMENTAL AND
 CONSTRUCTION SERVICES - WORLDWIDE

DESIGNED L.R.KETTER
 DRAWN B.E.CAMPBELL
 CHECKED H.W.DILLABOUGH
 APPROVED K.J.HARROLD
 APPROVED
 DATE 10/04/2012

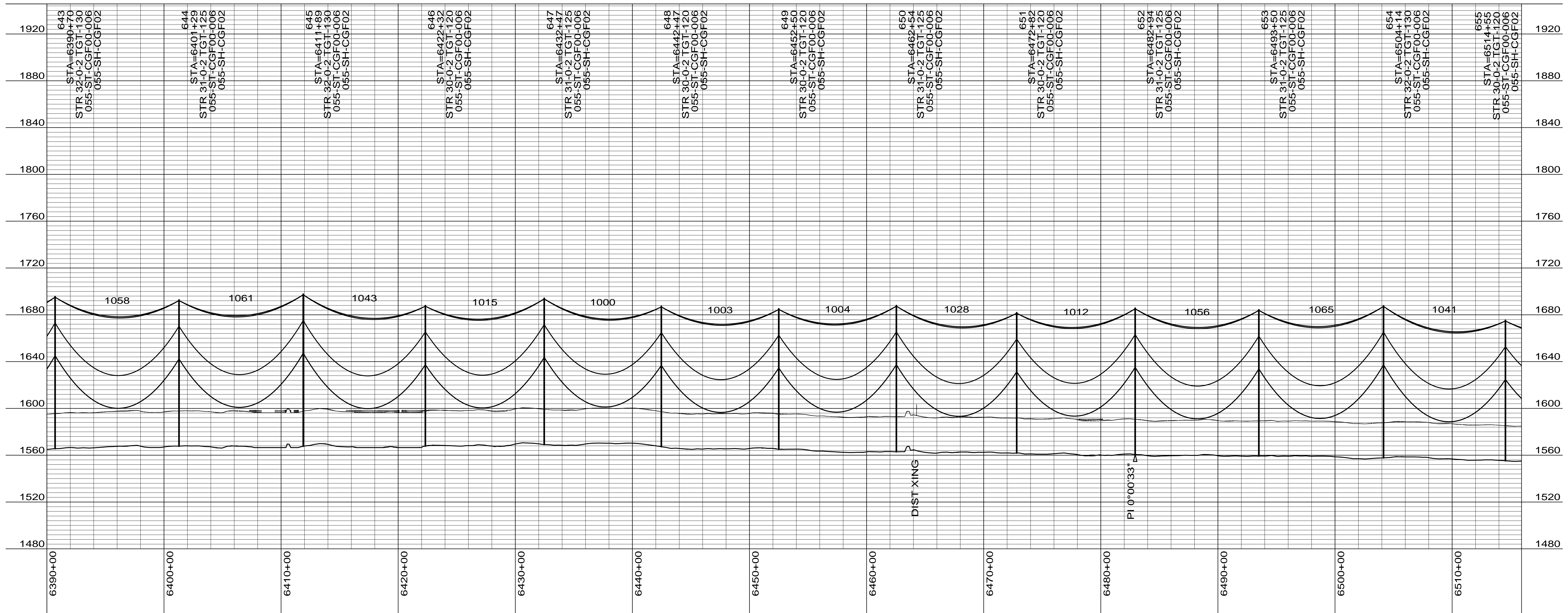
Center to Grand Forks Project

Minnkota Power
 COOPERATIVE, INC.

WELLS COUNTY



| DRAWING | REV |
|------------------|-----|
| 055-PP-WL632-018 | 3 |



CONDUCTOR: 959.6 KCMIL SUWANNEE ACSR/TW DISPLAYED @ EXTREME ICE, NO WIND; CLEARANCE: 30 FT
 OPGW: 49F69S - 24 STRAND, DISPLAYED @ -30 DEGREES F
 SHIELD WIRE: 1/2" EHS STEEL, DISPLAYED @ -30 DEGREES F

| REV | DATE | APP | DESCRIPTION | DFTR |
|-----|----------|-----|--|------|
| 2 | 11/26/14 | KJH | RECORD DRAWING | BEC |
| 1 | 03/29/13 | HWD | ADDED STR & FR DRAWING # S, OPGW SPLICE LOCATION | LRK |
| 0 | 10/04/12 | MFJ | ISSUED FOR CONSTRUCTION | LRK |

Stanley Consultants Inc.

8000 S. CHESTER STREET
 SUITE 500
 CENTENNIAL, CO 80112

A STANLEY GROUP COMPANY
 ENGINEERING, ENVIRONMENTAL AND
 CONSTRUCTION SERVICES - WORLDWIDE

DESIGNED L.R.KETTER
 DRAWN B.E.CAMPBELL
 CHECKED H.W.DILLABOUGH
 APPROVED K.J.HARROLD
 APPROVED
 DATE 10/04/2012

Center to Grand Forks Project

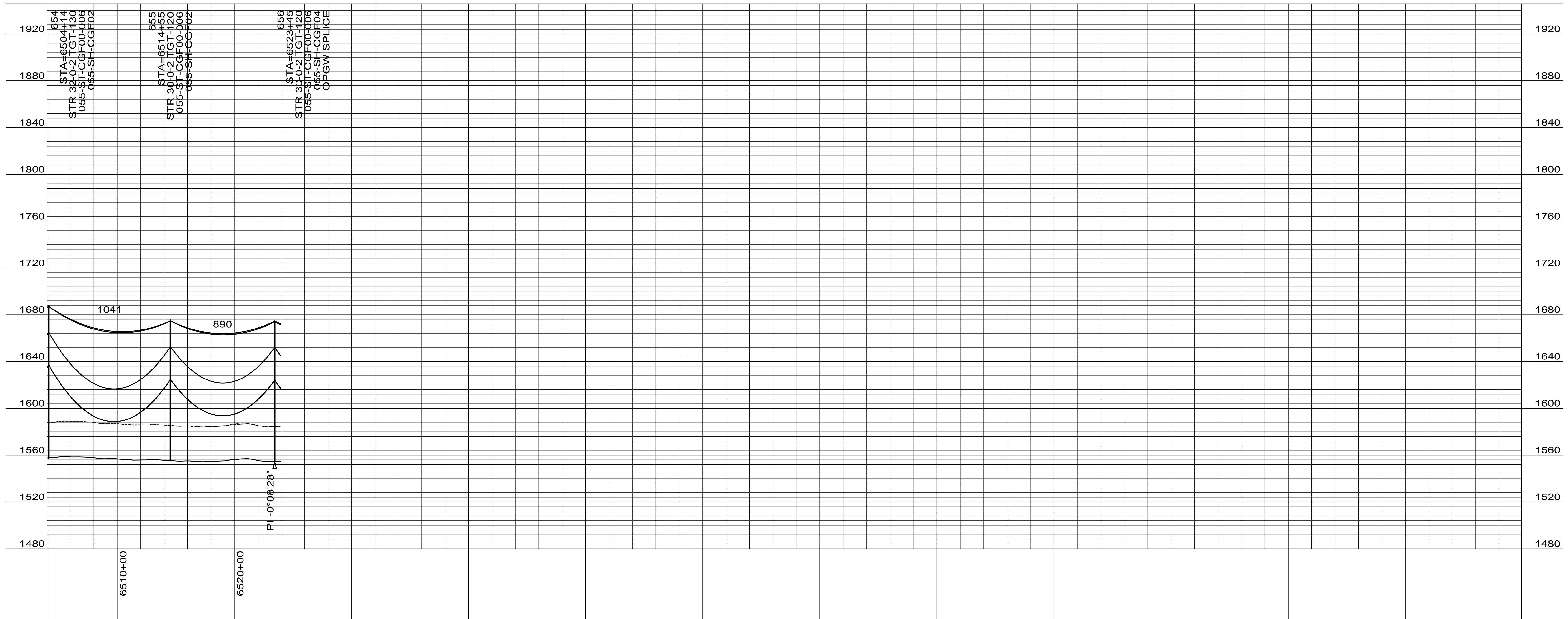
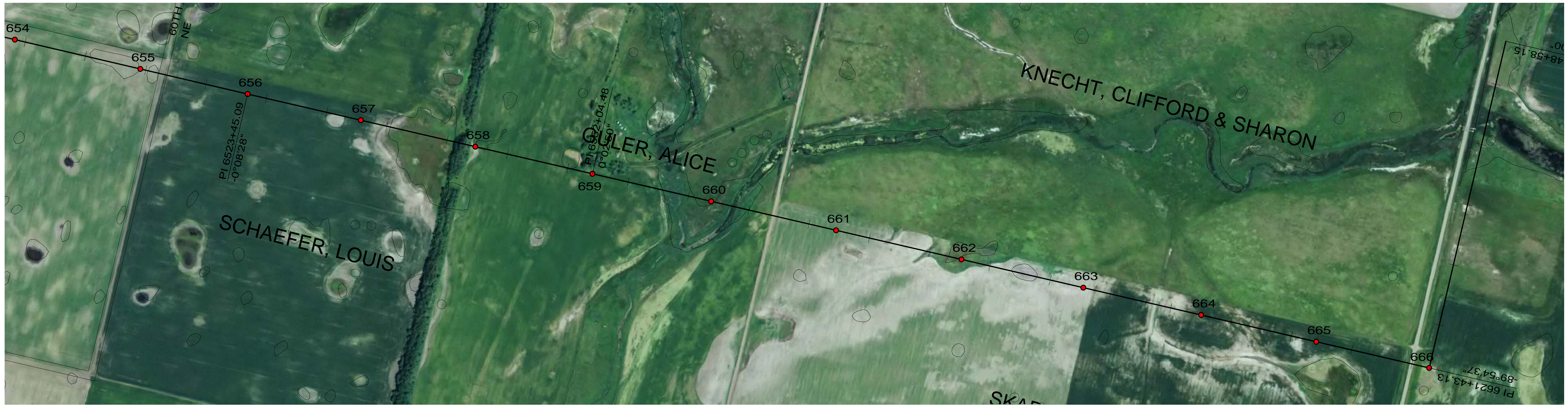
Minnkota Power
 COOPERATIVE, INC.

WELLS COUNTY

400.0 FT. HORIZ. SCALE
 40.0 FT. VERT. SCALE

DRAWING
 055-PP-WL643-019

REV
 2



CONDUCTOR: 959.6 KCMIL SUWANNEE ACSR/TW DISPLAYED @ EXTREME ICE, NO WIND; CLEARANCE: 30 FT
 OPGW: 49F69S - 24 STRAND, DISPLAYED @ -30 DEGREES F
 SHIELD WIRE: 1/2" EHS STEEL, DISPLAYED @ -30 DEGREES F

| REV | DATE | APP | DESCRIPTION | DFTR |
|-----|----------|-----|--|------|
| 2 | 11/26/14 | KJH | RECORD DRAWING | BEC |
| 1 | 03/29/13 | HWD | ADDED STR & FR DRAWING # S, OPGW SPLICE LOCATION | LRK |
| 0 | 10/04/12 | MFJ | ISSUED FOR CONSTRUCTION | LRK |

8000 S. CHESTER STREET
 SUITE 500
 CENTENNIAL, CO 80112

A STANLEY GROUP COMPANY
 ENGINEERING, ENVIRONMENTAL AND
 CONSTRUCTION SERVICES - WORLDWIDE

DESIGNED L.R.KETTER
 DRAWN B.E.CAMPBELL
 CHECKED H.W.DILLABOUGH
 APPROVED K.J.HARROLD
 DATE 10/04/2012

Center to Grand Forks Project

COOPERATIVE, INC.

WELLS COUNTY

400.0 FT. HORIZ. SCALE
 40.0 FT. VERT. SCALE

| | |
|------------------|-----|
| DRAWING | REV |
| 055-PP-WL654-020 | 2 |