

CONDUCTOR: 959.6 KCMIL SUWANNEE ACSR/TW DISPLAYED @ EXTREME ICE, NO WIND; CLEARANCE: 30 FT
 OPGW: 49F69S - 24 STRAND, DISPLAYED @ -30 DEGREES F
 SHIELD WIRE: 1/2" EHS STEEL, DISPLAYED @ -30 DEGREES F

| REV | DATE | APP | DESCRIPTION | DFTR |
|-----|----------|-----|---------------------------------|------|
| 2 | 10/01/14 | KJH | RECORD DRAWING | BEC |
| 1 | 05/10/13 | HWD | REGENERATION STATION RELOCATION | LRK |
| 0 | 01/11/13 | HWD | ISSUED FOR CONSTRUCTION | LRK |



8000 S. CHESTER STREET
 SUITE 500
 CENTENNIAL, CO 80112

A STANLEY GROUP COMPANY
 ENGINEERING, ENVIRONMENTAL AND
 CONSTRUCTION SERVICES - WORLDWIDE

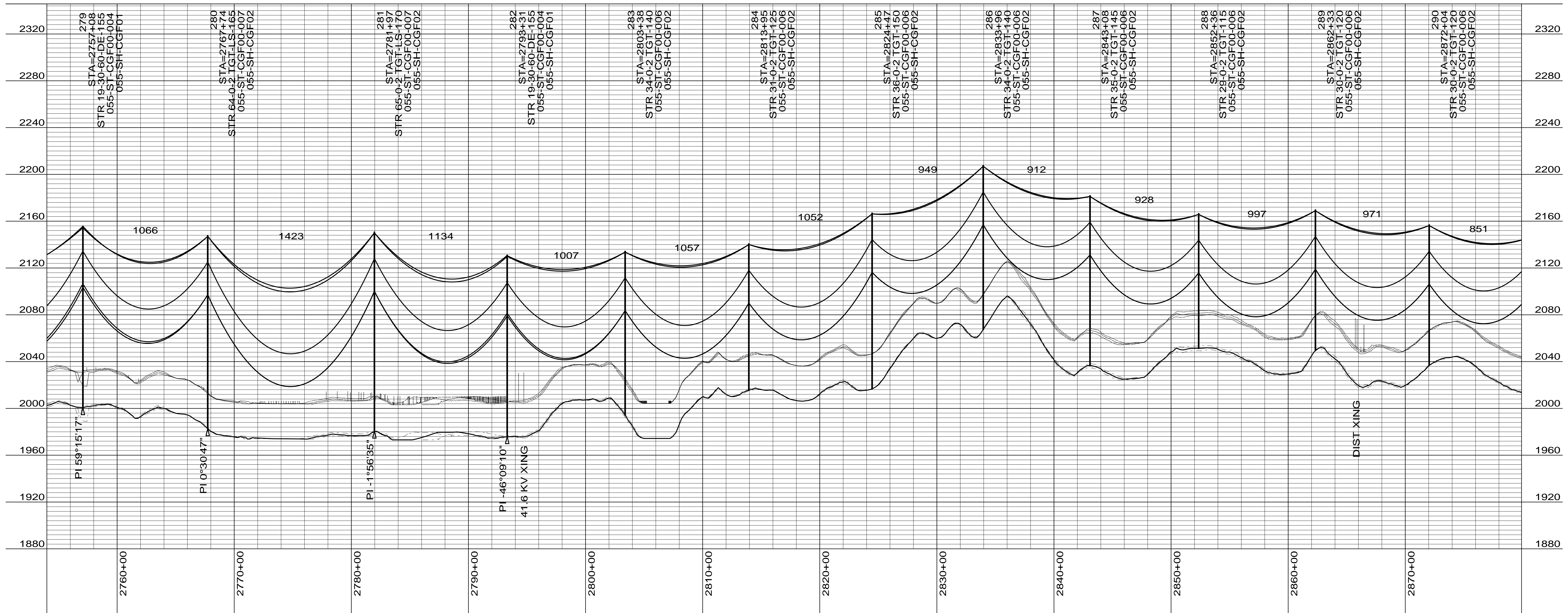
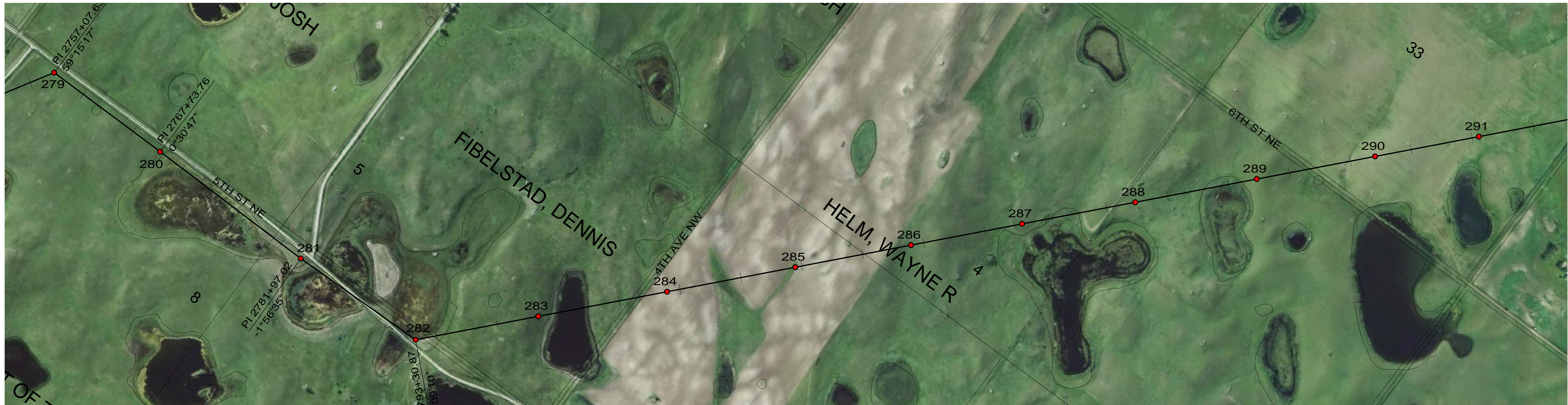
DESIGNED L.R.KETTER
 DRAWN B.E.CAMPBELL
 CHECKED H.W.DILLABOUGH
 APPROVED K.J.HARROLD
 APPROVED
 DATE 01/11/2013



SHERIDAN COUNTY

400.0 FT. HORIZ. SCALE
 40.0 FT. VERT. SCALE

| DRAWING | REV |
|------------------|-----|
| 055-PP-SH267-001 | 2 |



CONDUCTOR: 959.6 KCMIL SUWANNEE ACSR/TW DISPLAYED @ EXTREME ICE, NO WIND; CLEARANCE: 30 FT
 OPGW: 49F69S - 24 STRAND, DISPLAYED @ -30 DEGREES F
 SHIELD WIRE: 1/2" EHS STEEL, DISPLAYED @ -30 DEGREES F

| REV | DATE | APP | DESCRIPTION | DFTR |
|-----|----------|-----|---------------------------------|------|
| 4 | 10/01/14 | KJH | RECORD DRAWING | BEC |
| 3 | 12/09/13 | MFJ | MOVED STRUCTURE 281 12' SOUTH | LRK |
| 2 | 05/10/13 | HWD | REGENERATION STATION RELOCATION | LRK |

Stanley Consultants INC.

8000 S. CHESTER STREET
 SUITE 500
 CENTENNIAL, CO 80112

A STANLEY GROUP COMPANY
 ENGINEERING, ENVIRONMENTAL AND
 CONSTRUCTION SERVICES - WORLDWIDE

DESIGNED L.R.KETTER
 DRAWN B.E.CAMPBELL
 CHECKED H.W.DILLABOUGH
 APPROVED K.J.HARROLD
 APPROVED
 DATE 01/11/2013

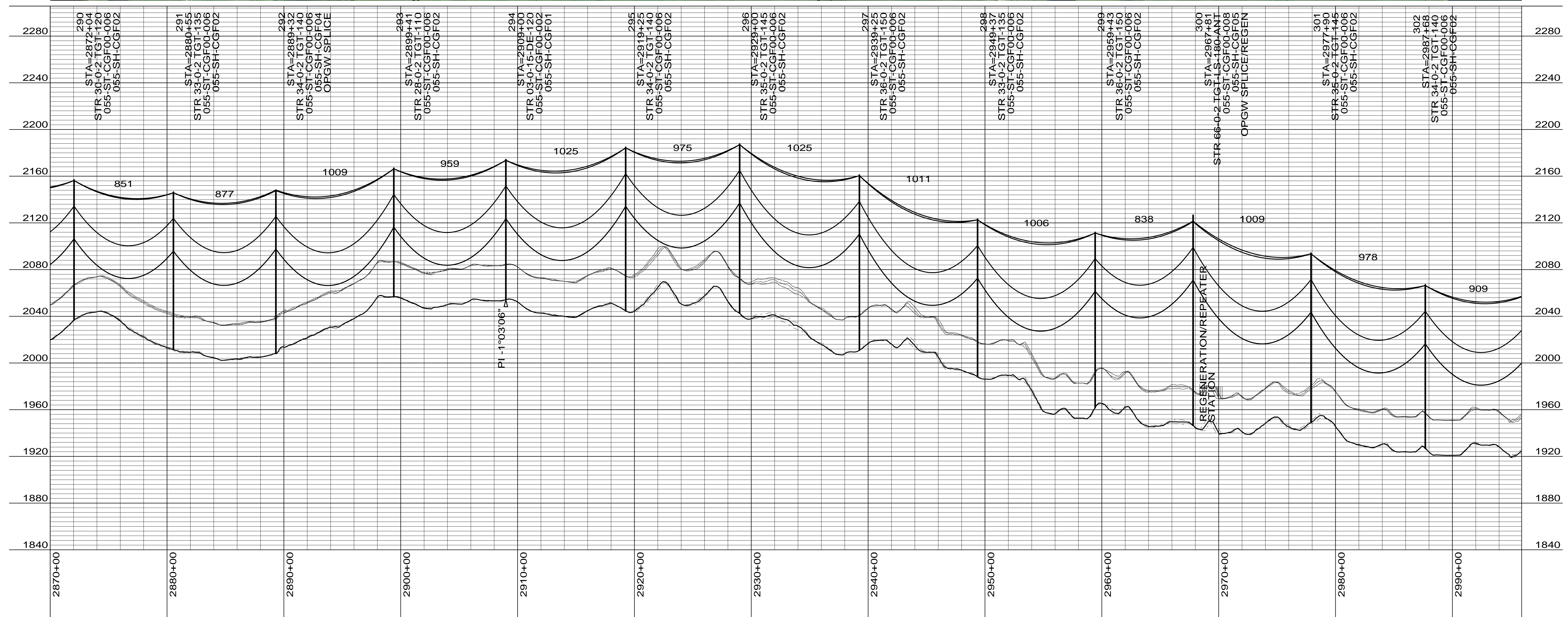
Center to Grand Forks Project

Minnkota Power
 COOPERATIVE, INC.

SHERIDAN COUNTY

400.0 FT. HORIZ. SCALE
 40.0 FT. VERT. SCALE

| DRAWING | REV |
|------------------|-----|
| 055-PP-SH279-002 | 4 |



CONDUCTOR: 959.6 KCMIL SUWANNEE ACSR/TW DISPLAYED @ EXTREME ICE, NO WIND; CLEARANCE: 30 FT
 OPGW: 49F69S - 24 STRAND, DISPLAYED @ -30 DEGREES F
 SHIELD WIRE: 1/2" EHS STEEL, DISPLAYED @ -30 DEGREES F

| REV | DATE | APP | DESCRIPTION | DFTR |
|-----|----------|-----|---------------------------------|------|
| 2 | 10/01/14 | KJH | RECORD DRAWING | BEC |
| 1 | 05/10/13 | HWD | REGENERATION STATION RELOCATION | LRK |
| 0 | 01/11/13 | HWD | ISSUED FOR CONSTRUCTION | LRK |

8000 S. CHESTER STREET
 SUITE 500
 CENTENNIAL, CO 80112

A STANLEY GROUP COMPANY
 ENGINEERING, ENVIRONMENTAL AND
 CONSTRUCTION SERVICES - WORLDWIDE

DESIGNED L.R.KETTER
 DRAWN B.E.CAMPBELL
 CHECKED H.W.DILLABOUGH
 APPROVED K.J.HARROLD
 DATE 01/11/2013

Center to Grand Forks Project

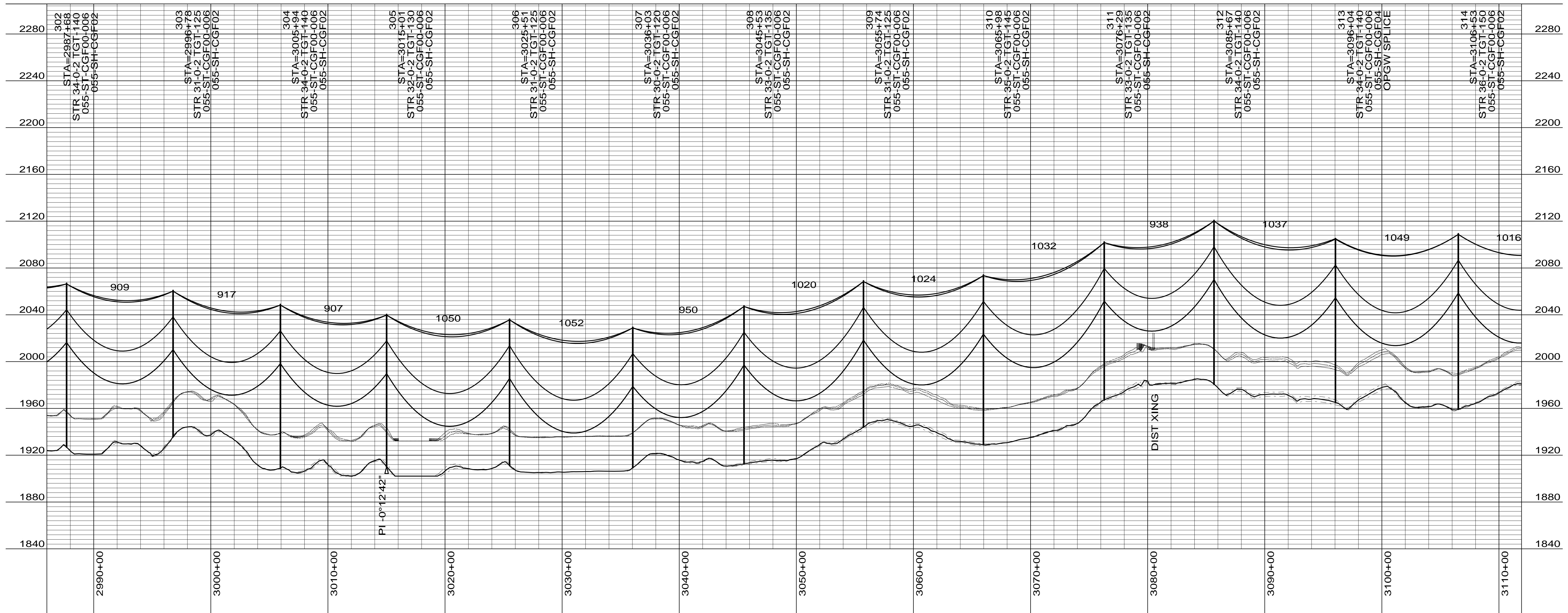
COOPERATIVE, INC.

SHERIDAN COUNTY

400.0 FT. HORIZ. SCALE
 40.0 FT. VERT. SCALE

DRAWING
 055-PP-SH290-003

REV
 2



CONDUCTOR: 959.6 KCMIL SUWANNEE ACSR/TW DISPLAYED @ EXTREME ICE, NO WIND; CLEARANCE: 30 FT
 OPGW: 49F69S - 24 STRAND, DISPLAYED @ -30 DEGREES F
 SHIELD WIRE: 1/2" EHS STEEL, DISPLAYED @ -30 DEGREES F

| REV | DATE | APP | DESCRIPTION | DFTR |
|-----|----------|-----|---------------------------------|------|
| 2 | 10/01/14 | KJH | RECORD DRAWING | BEC |
| 1 | 05/10/13 | HWD | REGENERATION STATION RELOCATION | LRK |
| 0 | 01/11/13 | HWD | ISSUED FOR CONSTRUCTION | LRK |



8000 S. CHESTER STREET
 SUITE 500
 CENTENNIAL, CO 80112

A STANLEY GROUP COMPANY
 ENGINEERING, ENVIRONMENTAL AND
 CONSTRUCTION SERVICES - WORLDWIDE

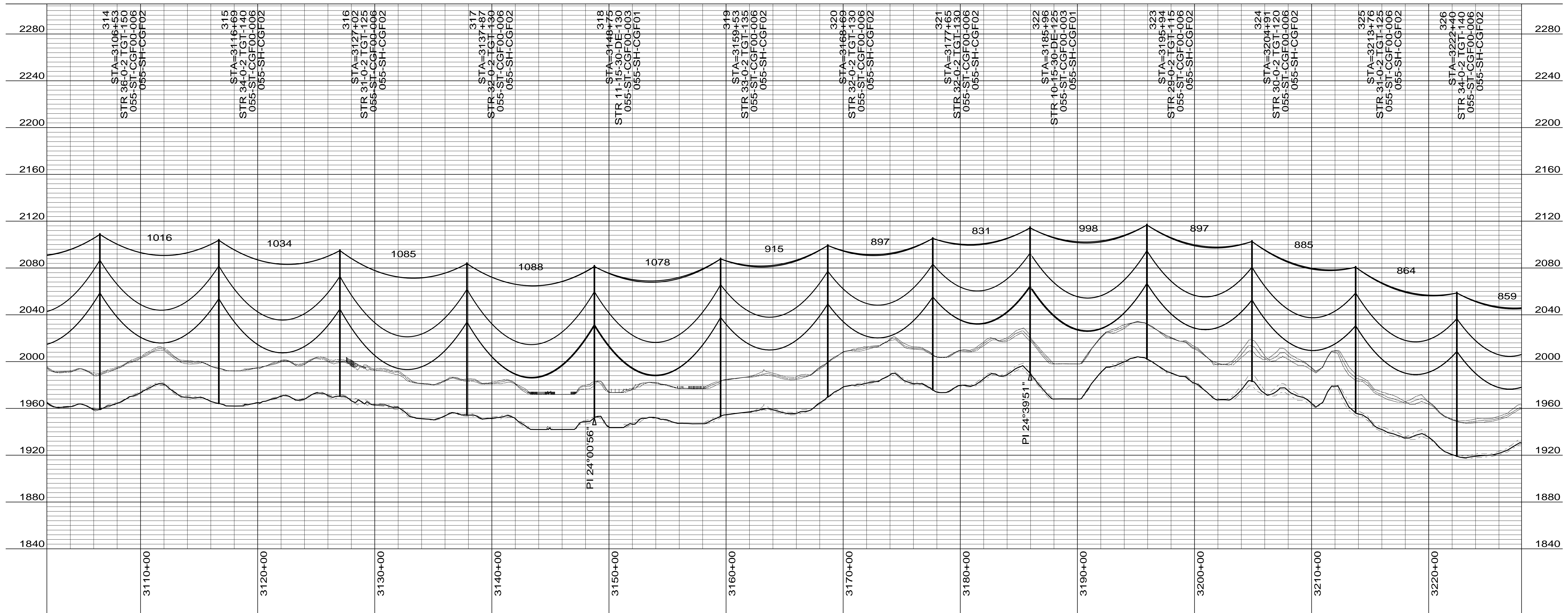
DESIGNED L.R.KETTER
 DRAWN B.E.CAMPBELL
 CHECKED H.W.DILLABOUGH
 APPROVED K.J.HARROLD
 APPROVED
 DATE 01/11/2013



SHERIDAN COUNTY

400.0 FT. HORIZ. SCALE
 40.0 FT. VERT. SCALE

| DRAWING | REV |
|------------------|-----|
| 055-PP-SH302-004 | 2 |



CONDUCTOR: 959.6 KCMIL SUWANNEE ACSR/TW DISPLAYED @ EXTREME ICE, NO WIND; CLEARANCE: 30 FT
 OPGW: 49F69S - 24 STRAND, DISPLAYED @ -30 DEGREES F
 SHIELD WIRE: 1/2" EHS STEEL, DISPLAYED @ -30 DEGREES F

| REV | DATE | APP | DESCRIPTION | DFTR |
|-----|----------|-----|---------------------------------|------|
| 2 | 10/01/14 | KJH | RECORD DRAWING | BEC |
| 1 | 05/10/13 | HWD | REGENERATION STATION RELOCATION | LRK |
| 0 | 01/11/13 | HWD | ISSUED FOR CONSTRUCTION | LRK |



Stanley Consultants INC.

8000 S. CHESTER STREET
 SUITE 500
 CENTENNIAL, CO 80112

A STANLEY GROUP COMPANY
 ENGINEERING, ENVIRONMENTAL AND
 CONSTRUCTION SERVICES - WORLDWIDE

DESIGNED L.R.KETTER
 DRAWN B.E.CAMPBELL
 CHECKED H.W.DILLABOUGH
 APPROVED K.J.HARROLD
 APPROVED
 DATE 01/11/2013

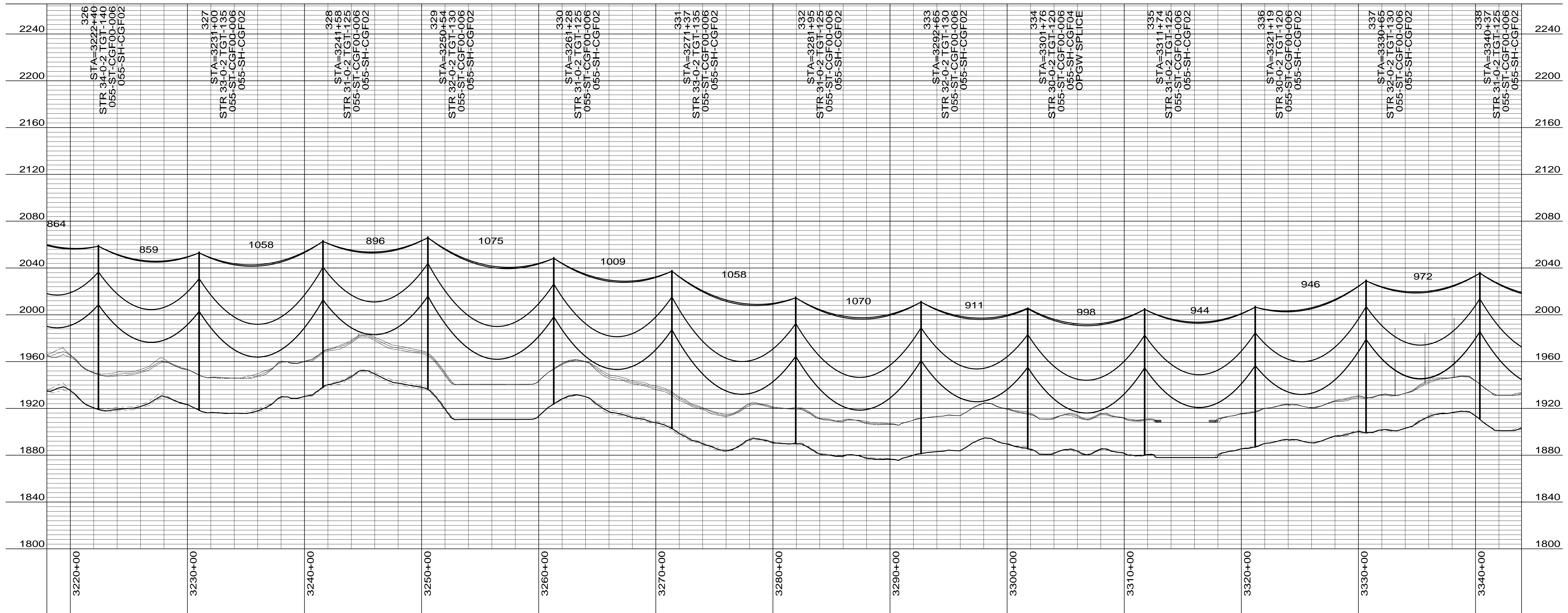
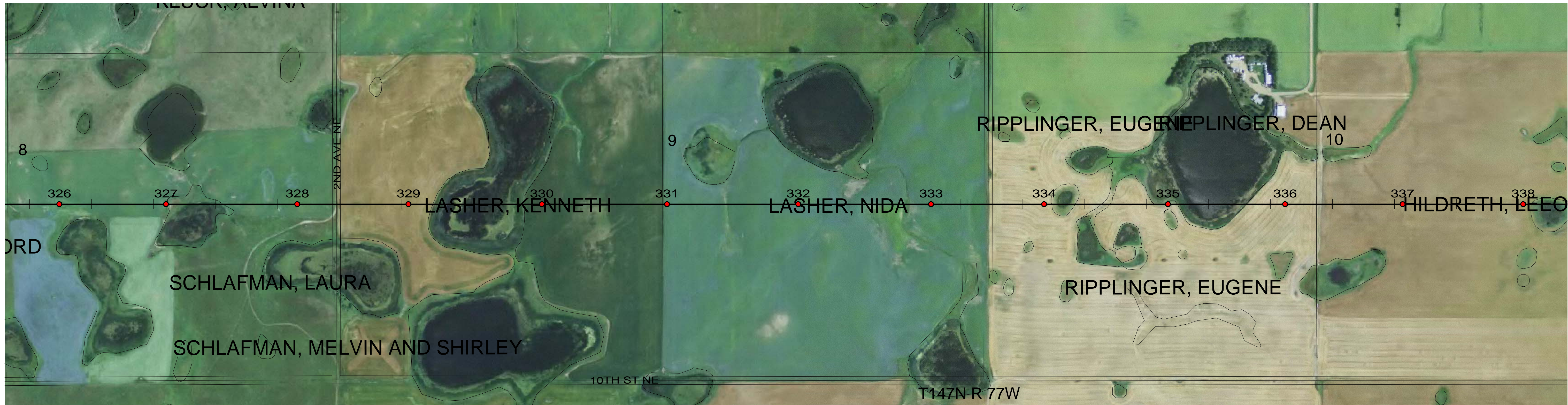
Center to Grand Forks Project



SHERIDAN COUNTY

400.0 FT. HORIZ. SCALE
 40.0 FT. VERT. SCALE

| DRAWING | REV |
|------------------|-----|
| 055-PP-SH314-005 | 2 |



CONDUCTOR: 959.6 KCMIL SUWANNEE ACSR/TW DISPLAYED @ EXTREME ICE, NO WIND; CLEARANCE: 30 FT
 OPGW: 49F69S - 24 STRAND, DISPLAYED @ -30 DEGREES F
 SHIELD WIRE: 1/2" EHS STEEL, DISPLAYED @ -30 DEGREES F

| REV | DATE | APP | DESCRIPTION | DFTR |
|-----|----------|-----|---------------------------------|------|
| 2 | 10/01/14 | KJH | RECORD DRAWING | BEC |
| 1 | 05/10/13 | HWD | REGENERATION STATION RELOCATION | LRK |
| 0 | 01/11/13 | HWD | ISSUED FOR CONSTRUCTION | LRK |

Stanley Consultants INC.

8000 S. CHESTER STREET
 SUITE 500
 CENTENNIAL, CO 80112

A STANLEY GROUP COMPANY
 ENGINEERING, ENVIRONMENTAL AND
 CONSTRUCTION SERVICES - WORLDWIDE

DESIGNED L.R.KETTER
 DRAWN B.E.CAMPBELL
 CHECKED H.W.DILLABOUGH
 APPROVED K.J.HARROLD
 APPROVED
 DATE 01/11/2013

Center to Grand Forks Project

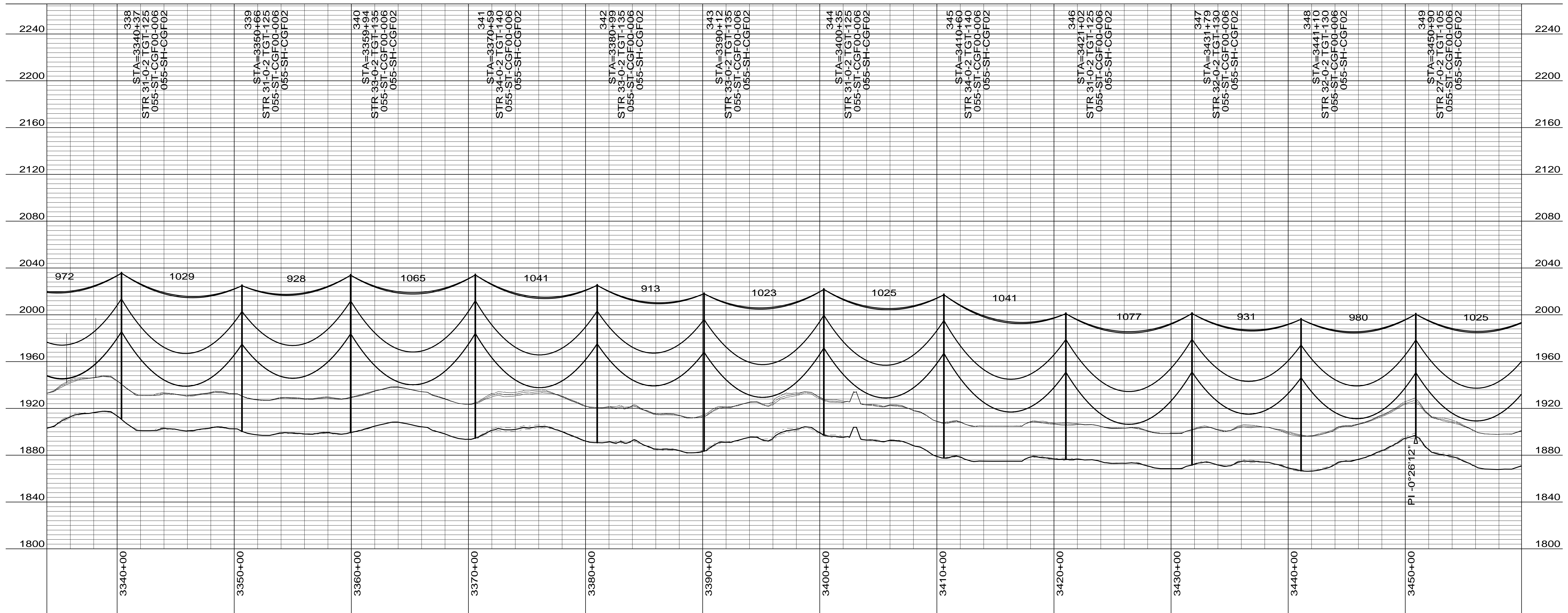
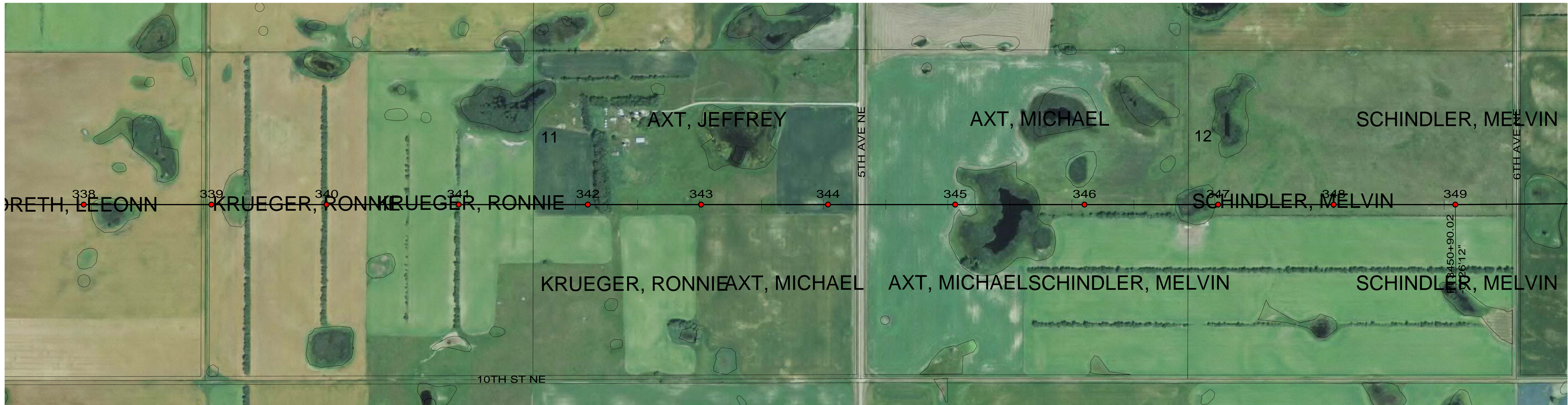
Minnkota Power
 COOPERATIVE, INC.

SHERIDAN COUNTY

400.0 FT. HORIZ. SCALE
 40.0 FT. VERT. SCALE

DRAWING
055-PP-SH326-006

REV
2



CONDUCTOR: 959.6 KCMIL SUWANNEE ACSR/TW DISPLAYED @ EXTREME ICE, NO WIND; CLEARANCE: 30 FT
 OPGW: 49F69S - 24 STRAND, DISPLAYED @ -30 DEGREES F
 SHIELD WIRE: 1/2" EHS STEEL, DISPLAYED @ -30 DEGREES F

| REV | DATE | APP | DESCRIPTION | DFTR |
|-----|----------|-----|---------------------------------|------|
| 2 | 10/01/14 | KJH | RECORD DRAWING | BEC |
| 1 | 05/10/13 | HWD | REGENERATION STATION RELOCATION | LRK |
| 0 | 01/11/13 | HWD | ISSUED FOR CONSTRUCTION | LRK |



Stanley Consultants INC.

8000 S. CHESTER STREET
 SUITE 500
 CENTENNIAL, CO 80112

A STANLEY GROUP COMPANY
 ENGINEERING, ENVIRONMENTAL AND
 CONSTRUCTION SERVICES - WORLDWIDE

DESIGNED L.R.KETTER
 DRAWN B.E.CAMPBELL
 CHECKED H.W.DILLABOUGH
 APPROVED K.J.HARROLD
 APPROVED
 DATE 01/11/2013

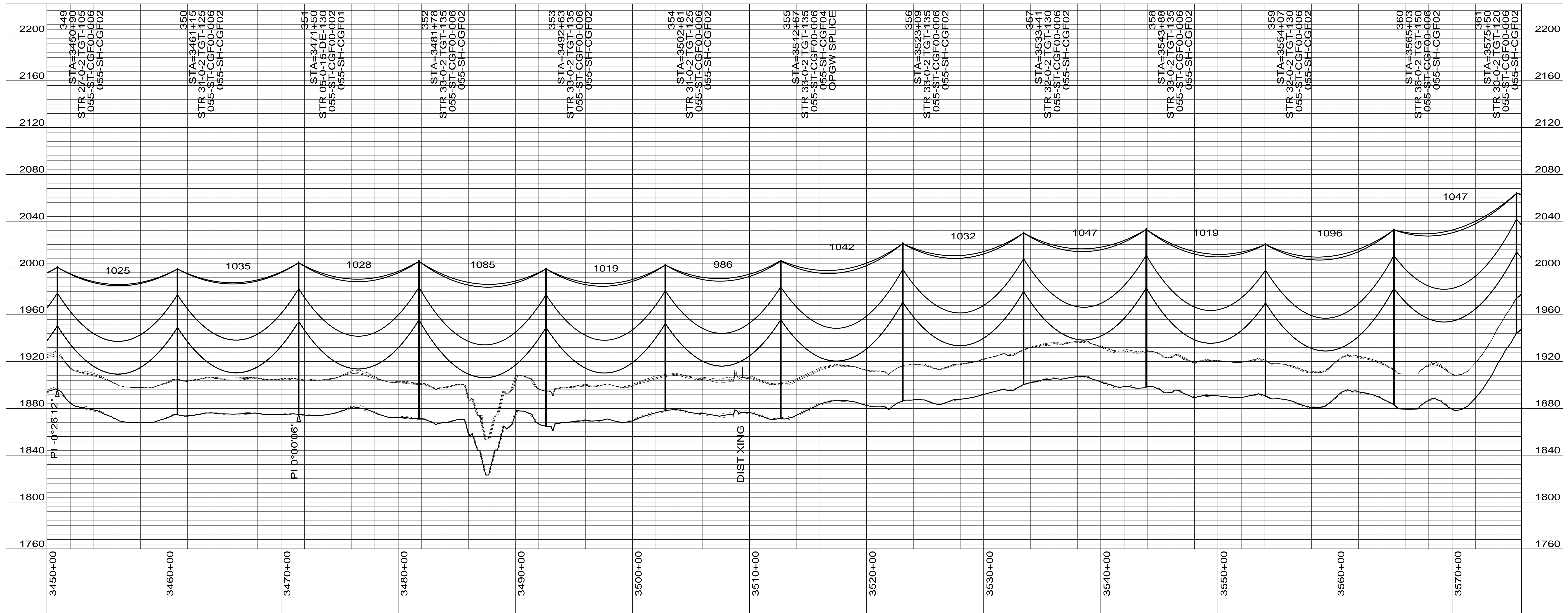
Center to Grand Forks Project

Minnkota Power
 COOPERATIVE, INC.

SHERIDAN COUNTY

400.0 FT. HORIZ. SCALE
 40.0 FT. VERT. SCALE

| DRAWING | REV |
|------------------|-----|
| 055-PP-SH338-007 | 2 |



CONDUCTOR: 959.6 KCMIL SUWANNEE ACSR/TW DISPLAYED @ EXTREME ICE, NO WIND; CLEARANCE: 30 FT
 OPGW: 49F69S - 24 STRAND, DISPLAYED @ -30 DEGREES F
 SHIELD WIRE: 1/2" EHS STEEL, DISPLAYED @ -30 DEGREES F

| REV | DATE | APP | DESCRIPTION | DFTR |
|-----|----------|-----|---------------------------------|------|
| 2 | 10/01/14 | KJH | RECORD DRAWING | BEC |
| 1 | 05/10/13 | HWD | REGENERATION STATION RELOCATION | LRK |
| 0 | 01/11/13 | HWD | ISSUED FOR CONSTRUCTION | LRK |

Stanley Consultants INC.

8000 S. CHESTER STREET
 SUITE 500
 CENTENNIAL, CO 80112

A STANLEY GROUP COMPANY
 ENGINEERING, ENVIRONMENTAL AND
 CONSTRUCTION SERVICES - WORLDWIDE

DESIGNED L.R.KETTER
 DRAWN B.E.CAMPBELL
 CHECKED H.W.DILLABOUGH
 APPROVED K.J.HARROLD
 APPROVED
 DATE 01/11/2013

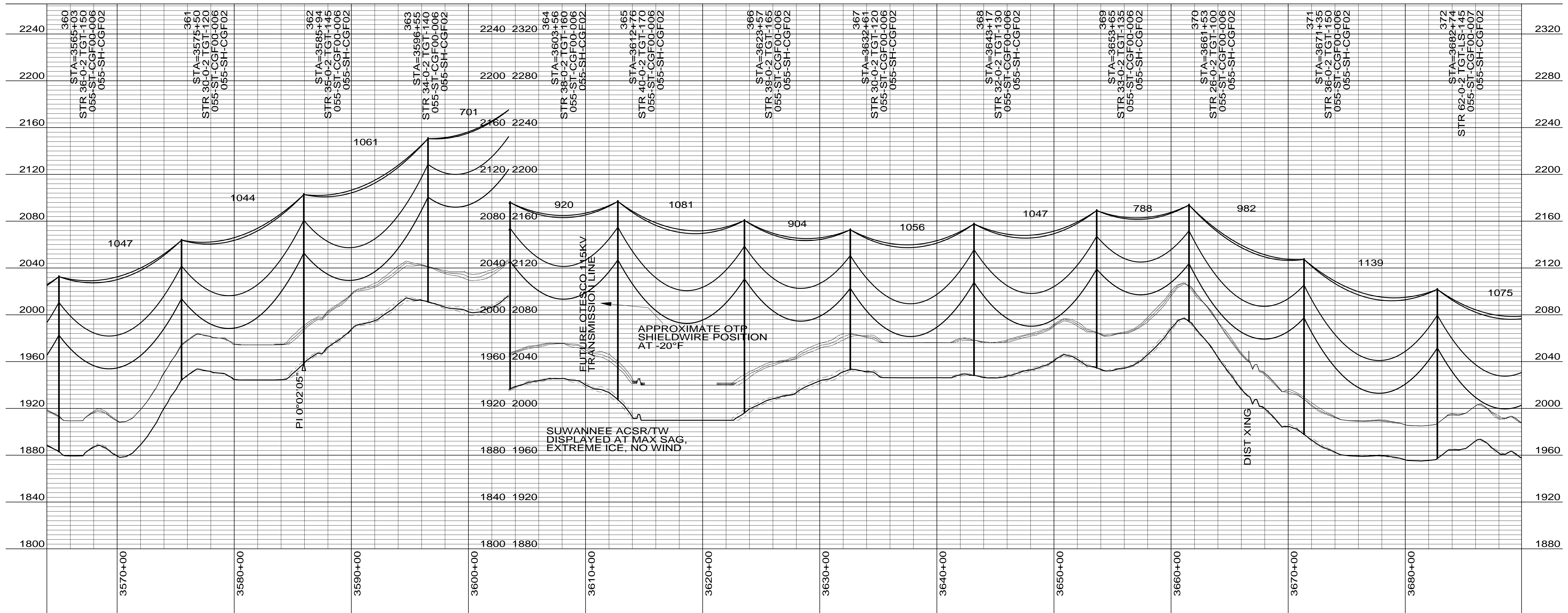
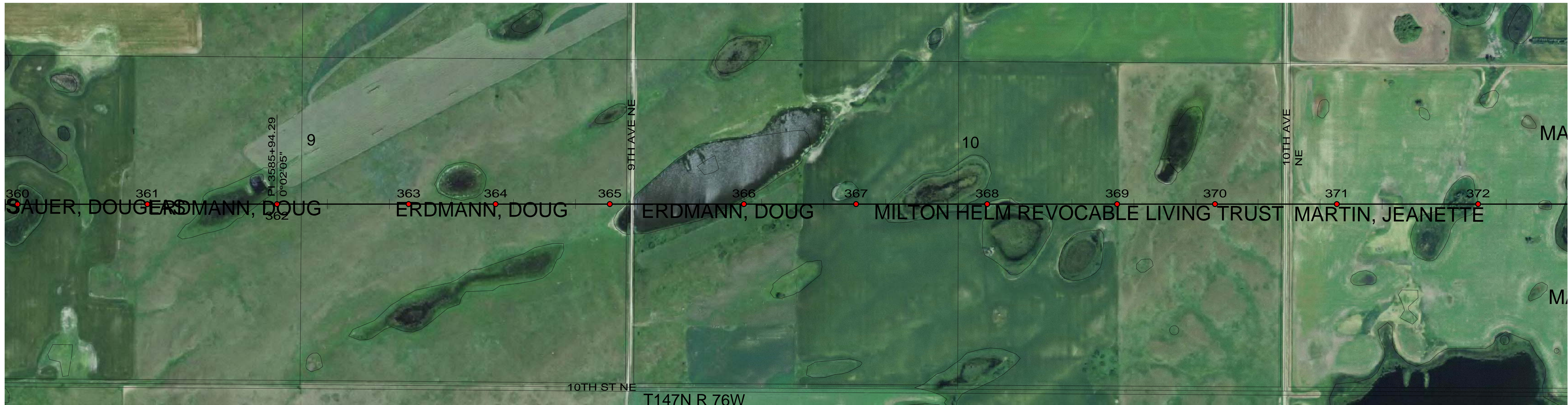
Center to Grand Forks Project

Minnkota Power
 COOPERATIVE, INC.

SHERIDAN COUNTY

400.0 FT. HORIZ. SCALE
 40.0 FT. VERT. SCALE

| DRAWING | REV |
|------------------|-----|
| 055-PP-SH349-008 | 2 |



CONDUCTOR: 959.6 KCMIL SUWANNEE ACSR/TW DISPLAYED @ EXTREME ICE, NO WIND; CLEARANCE: 30 FT
 OPGW: 49F69S - 24 STRAND, DISPLAYED @ -30 DEGREES F
 SHIELD WIRE: 1/2" EHS STEEL, DISPLAYED @ -30 DEGREES F

| REV | DATE | APP | DESCRIPTION | DFTR |
|-----|----------|-----|---------------------------------|------|
| 3 | 10/01/14 | KJH | RECORD DRAWING | BEC |
| 2 | 05/10/13 | HWD | REGENERATION STATION RELOCATION | LRK |
| 1 | 02/14/13 | HWD | ADDED LONG SPAN STRUCTURE INFO | LRK |

Stanley Consultants Inc.

8000 S. CHESTER STREET
 SUITE 500
 CENTENNIAL, CO 80112

A STANLEY GROUP COMPANY
 ENGINEERING, ENVIRONMENTAL AND
 CONSTRUCTION SERVICES - WORLDWIDE

DESIGNED L.R.KETTER
 DRAWN B.E.CAMPBELL
 CHECKED H.W.DILLABOUGH
 APPROVED K.J.HARROLD
 APPROVED
 DATE 01/11/2013

Center to Grand Forks Project

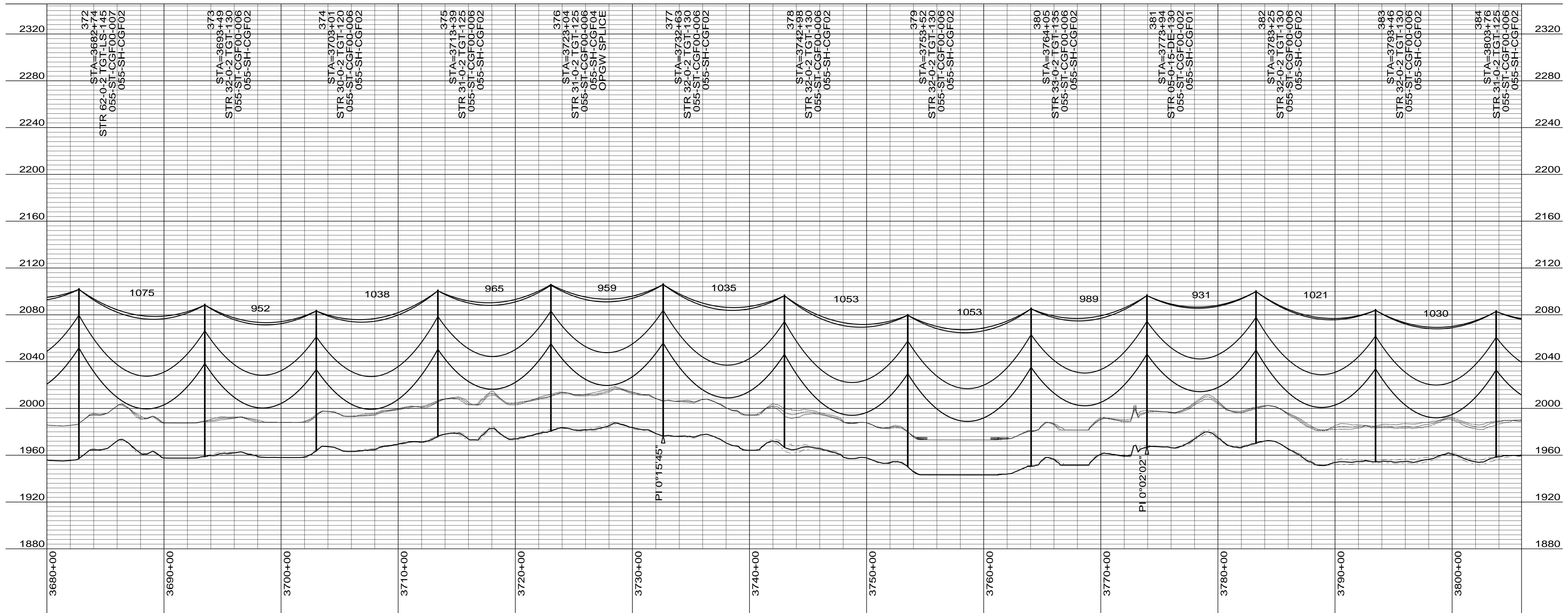
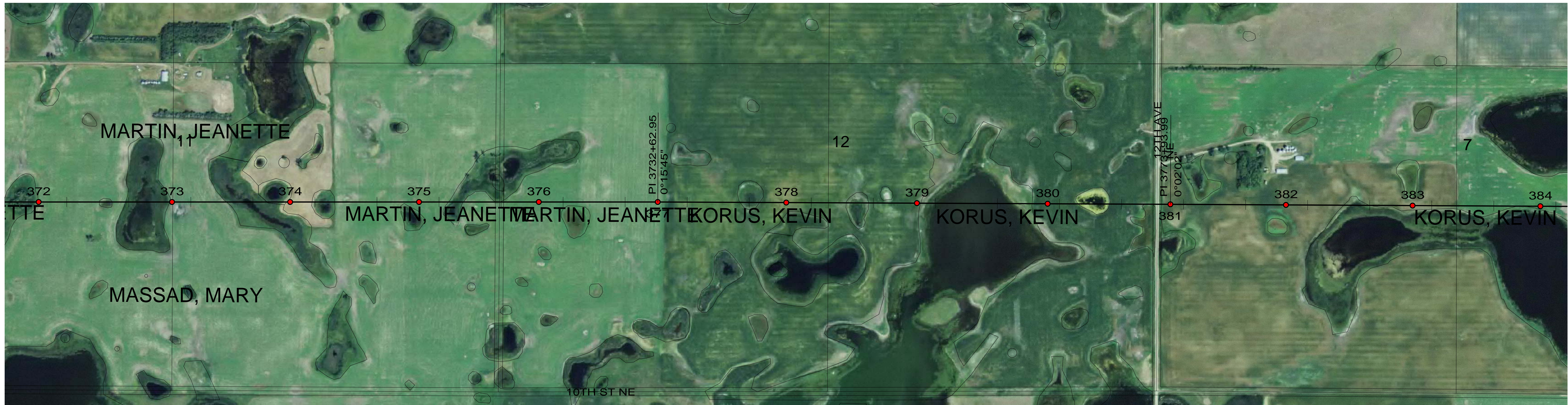
Minnkota Power
 COOPERATIVE, INC.

SHERIDAN COUNTY

400.0 FT. HORIZ. SCALE
 40.0 FT. VERT. SCALE

DRAWING
055-PP-SH360-009

REV
3



CONDUCTOR: 959.6 KCMIL SUWANNEE ACSR/TW DISPLAYED @ EXTREME ICE, NO WIND; CLEARANCE: 30 FT
 OPGW: 49F69S - 24 STRAND, DISPLAYED @ -30 DEGREES F
 SHIELD WIRE: 1/2" EHS STEEL, DISPLAYED @ -30 DEGREES F

| REV | DATE | APP | DESCRIPTION | DFTR |
|-----|----------|-----|---------------------------------|------|
| 2 | 10/01/14 | KJH | RECORD DRAWING | BEC |
| 1 | 05/10/13 | HWD | REGENERATION STATION RELOCATION | LRK |
| 0 | 01/11/13 | HWD | ISSUED FOR CONSTRUCTION | LRK |



8000 S. CHESTER STREET
 SUITE 500
 CENTENNIAL, CO 80112

A STANLEY GROUP COMPANY
 ENGINEERING, ENVIRONMENTAL AND
 CONSTRUCTION SERVICES - WORLDWIDE

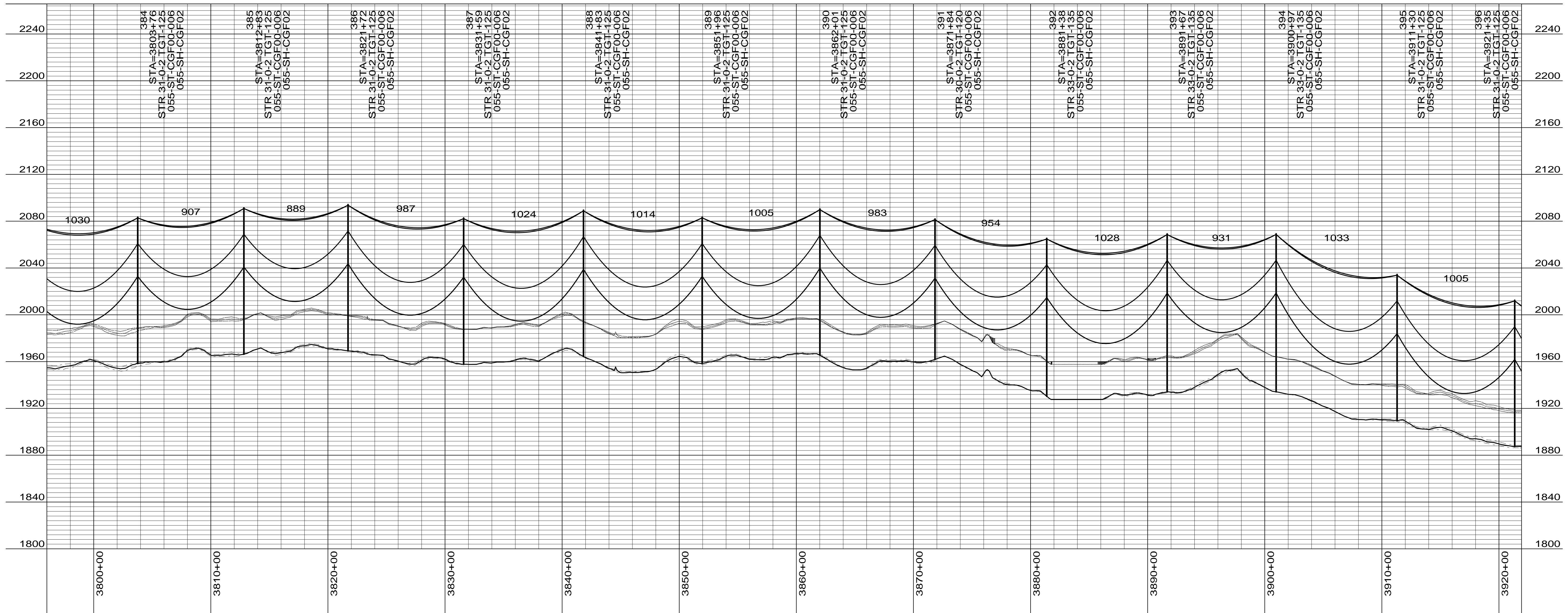
DESIGNED L.R.KETTER
 DRAWN B.E.CAMPBELL
 CHECKED H.W.DILLABOUGH
 APPROVED K.J.HARROLD
 APPROVED
 DATE 01/11/2013



SHERIDAN COUNTY

400.0 FT. HORIZ. SCALE
 40.0 FT. VERT. SCALE

| DRAWING | REV |
|------------------|-----|
| 055-PP-SH372-010 | 2 |



CONDUCTOR: 959.6 KCMIL SUWANNEE ACSR/TW DISPLAYED @ EXTREME ICE, NO WIND; CLEARANCE: 30 FT
 OPGW: 49F69S - 24 STRAND, DISPLAYED @ -30 DEGREES F
 SHIELD WIRE: 1/2" EHS STEEL, DISPLAYED @ -30 DEGREES F

| REV | DATE | APP | DESCRIPTION | DFTR |
|-----|----------|-----|----------------------------------|------|
| 3 | 10/01/14 | KJH | RECORD DRAWING | BEC |
| 2 | 07/17/13 | HWD | LANDOWNER STRUCTURE MOVE REQUEST | HWD |
| 1 | 05/10/13 | HWD | REGENERATION STATION RELOCATION | LRK |

8000 S. CHESTER STREET
 SUITE 500
 CENTENNIAL, CO 80112

A STANLEY GROUP COMPANY
 ENGINEERING, ENVIRONMENTAL AND
 CONSTRUCTION SERVICES - WORLDWIDE

DESIGNED L.R.KETTER
 DRAWN B.E.CAMPBELL
 CHECKED H.W.DILLABOUGH
 APPROVED K.J.HARROLD
 DATE 01/11/2013

Center to Grand Forks Project

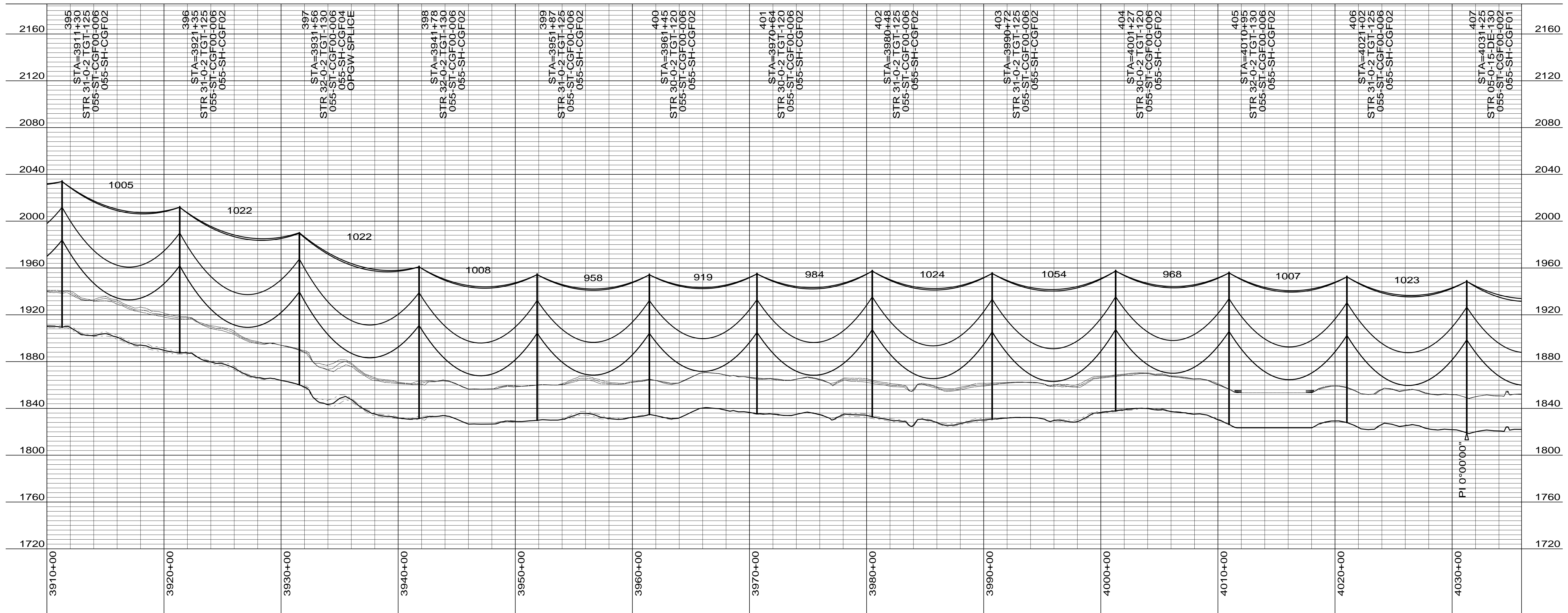
COOPERATIVE, INC.

SHERIDAN COUNTY

400.0 FT. HORIZ. SCALE
 40.0 FT. VERT. SCALE

DRAWING
 055-PP-SH384-011

REV
 3



CONDUCTOR: 959.6 KCMIL SUWANNEE ACSR/TW DISPLAYED @ EXTREME ICE, NO WIND; CLEARANCE: 30 FT
 OPGW: 49F69S - 24 STRAND, DISPLAYED @ -30 DEGREES F
 SHIELD WIRE: 1/2" EHS STEEL, DISPLAYED @ -30 DEGREES F

| REV | DATE | APP | DESCRIPTION | DFTR |
|-----|----------|-----|----------------------------------|------|
| 3 | 10/01/14 | KJH | RECORD DRAWING | BEC |
| 2 | 07/17/13 | HWD | LANDOWNER STRUCTURE MOVE REQUEST | HWD |
| 1 | 05/10/13 | HWD | REGENERATION STATION RELOCATION | LRK |



Stanley Consultants INC.
 8000 S. CHESTER STREET
 SUITE 500
 CENTENNIAL, CO 80112

A STANLEY GROUP COMPANY
 ENGINEERING, ENVIRONMENTAL AND
 CONSTRUCTION SERVICES - WORLDWIDE

DESIGNED L.R.KETTER
 DRAWN B.E.CAMPBELL
 CHECKED H.W.DILLABOUGH
 APPROVED K.J.HARROLD
 DATE 01/11/2013

Center to Grand Forks Project



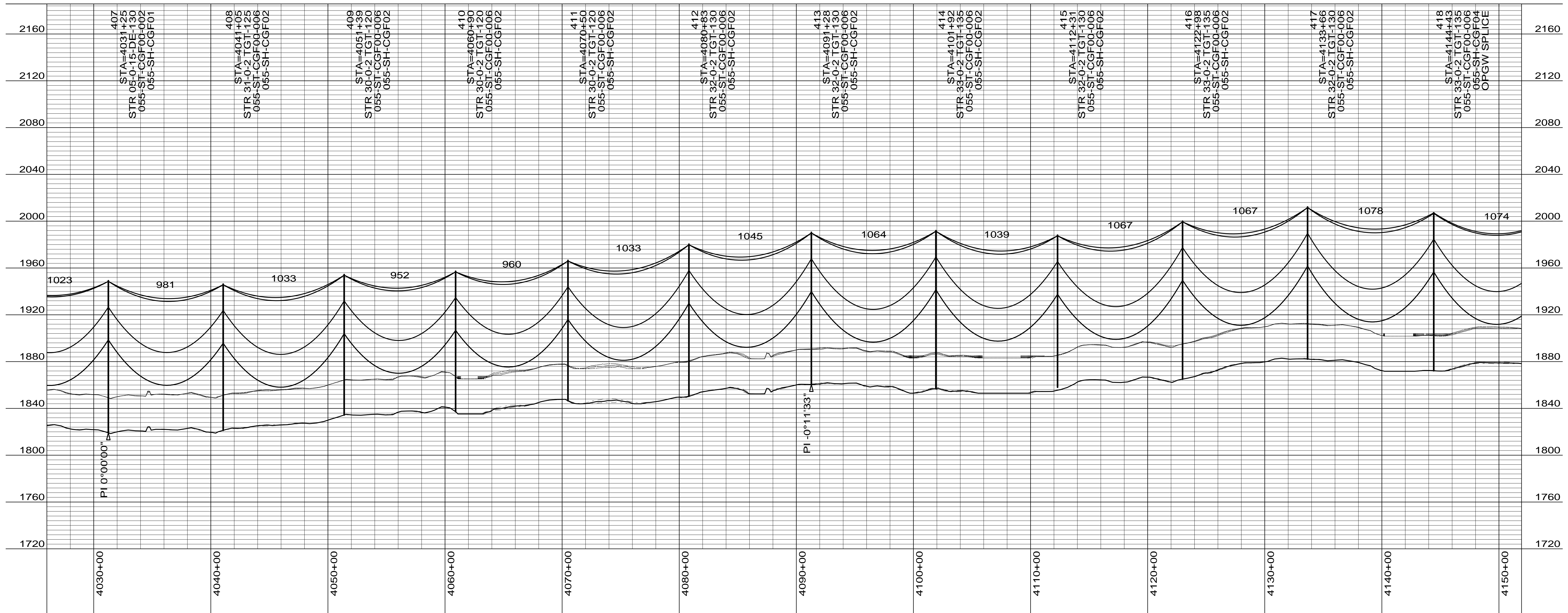
Minnkota Power
 COOPERATIVE, INC.

SHERIDAN COUNTY

400.0 FT. HORIZ. SCALE
 40.0 FT. VERT. SCALE

DRAWING
 055-PP-SH395-012

REV
 3



CONDUCTOR: 959.6 KCMIL SUWANNEE ACSR/TW DISPLAYED @ EXTREME ICE, NO WIND; CLEARANCE: 30 FT
 OPGW: 49F69S - 24 STRAND, DISPLAYED @ -30 DEGREES F
 SHIELD WIRE: 1/2" EHS STEEL, DISPLAYED @ -30 DEGREES F

| REV | DATE | APP | DESCRIPTION | DFTR |
|-----|----------|-----|----------------------------------|------|
| 4 | 10/01/14 | KJH | RECORD DRAWING | BEC |
| 3 | 12/09/13 | MFJ | MOVED STRUCTURE 408 10' WEST | KJH |
| 2 | 07/17/13 | HWD | LANDOWNER STRUCTURE MOVE REQUEST | LRK |

8000 S. CHESTER STREET
 SUITE 500
 CENTENNIAL, CO 80112

A STANLEY GROUP COMPANY
 ENGINEERING, ENVIRONMENTAL AND
 CONSTRUCTION SERVICES - WORLDWIDE

DESIGNED L.R.KETTER
 DRAWN B.E.CAMPBELL
 CHECKED H.W.DILLABOUGH
 APPROVED K.J.HARROLD
 APPROVED
 DATE 01/11/2013

Center to Grand Forks Project

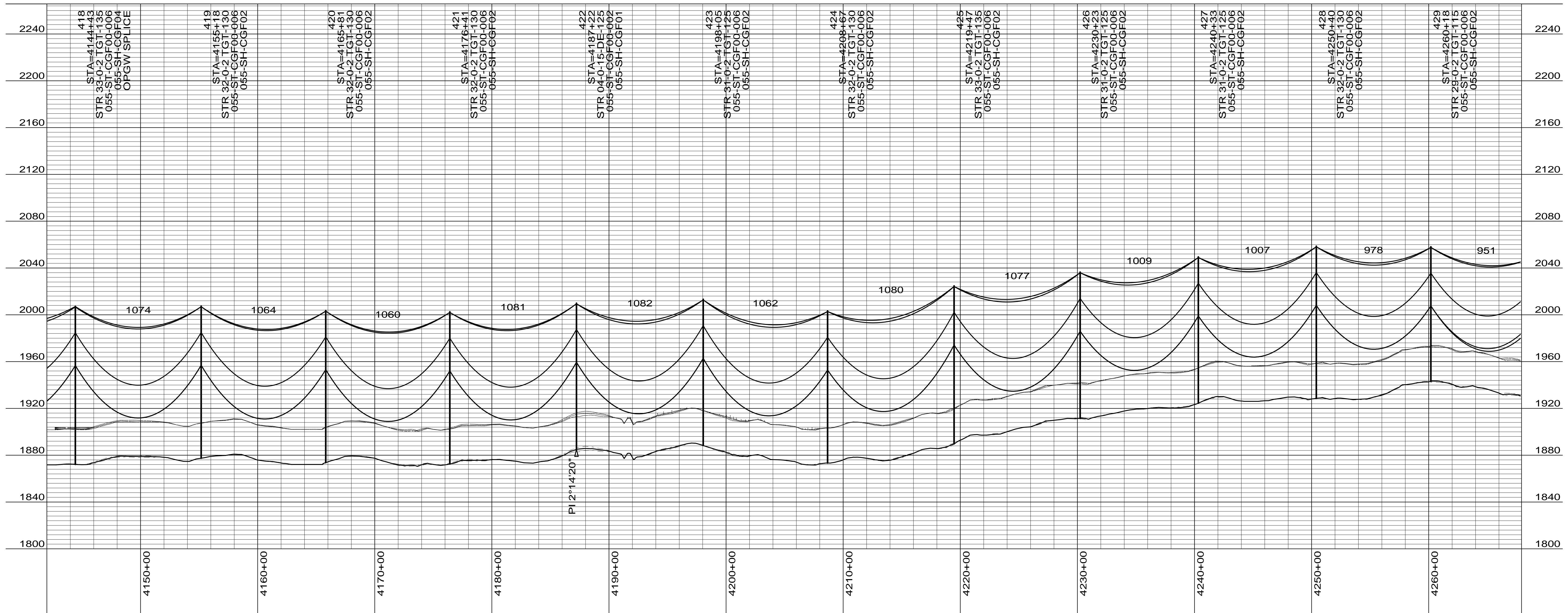
MPC COOPERATIVE, INC.

SHERIDAN COUNTY

400.0 FT. HORIZ. SCALE
 40.0 FT. VERT. SCALE

DRAWING
 055-PP-SH407-013

REV
 4



CONDUCTOR: 959.6 KCMIL SUWANNEE ACSR/TW DISPLAYED @ EXTREME ICE, NO WIND; CLEARANCE: 30 FT
 OPGW: 49F69S - 24 STRAND, DISPLAYED @ -30 DEGREES F
 SHIELD WIRE: 1/2" EHS STEEL, DISPLAYED @ -30 DEGREES F

| REV | DATE | APP | DESCRIPTION | DFTR |
|-----|----------|-----|---------------------------------|------|
| 2 | 10/01/14 | KJH | RECORD DRAWING | BEC |
| 1 | 05/10/13 | HWD | REGENERATION STATION RELOCATION | LRK |
| 0 | 01/11/13 | HWD | ISSUED FOR CONSTRUCTION | LRK |



8000 S. CHESTER STREET
 SUITE 500
 CENTENNIAL, CO 80112

A STANLEY GROUP COMPANY
 ENGINEERING, ENVIRONMENTAL AND
 CONSTRUCTION SERVICES - WORLDWIDE

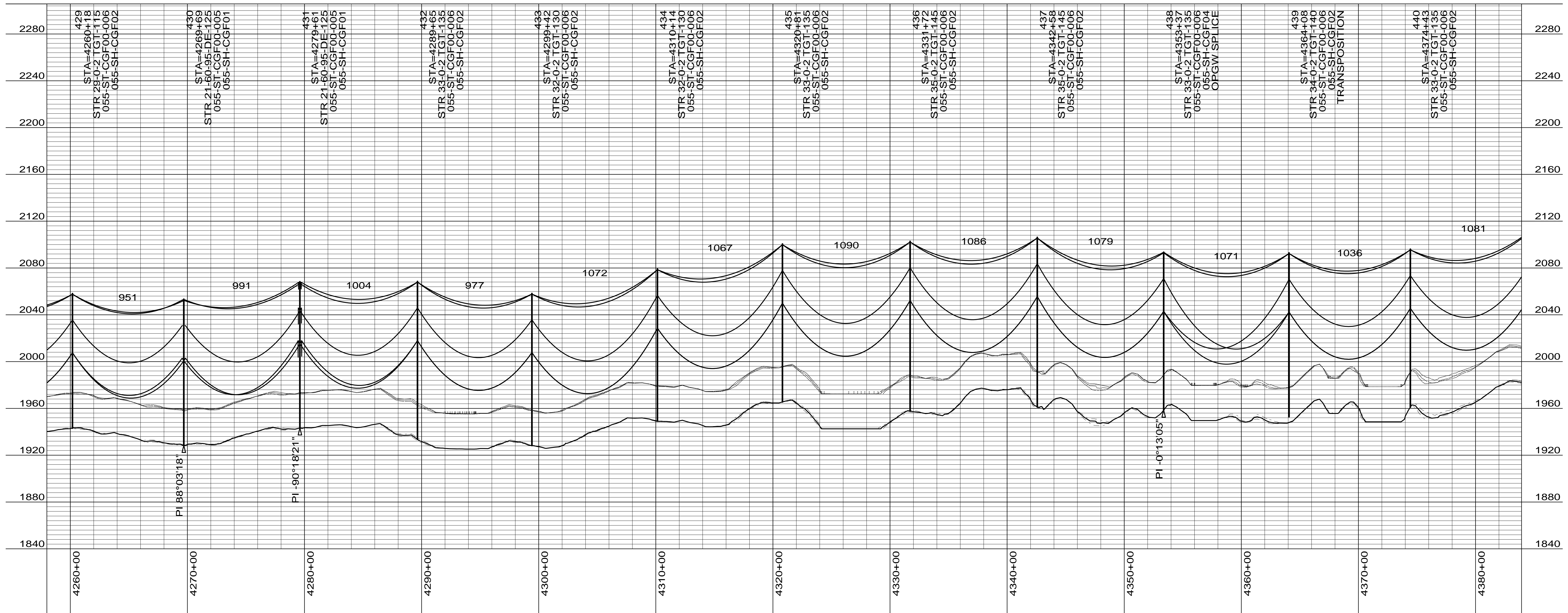
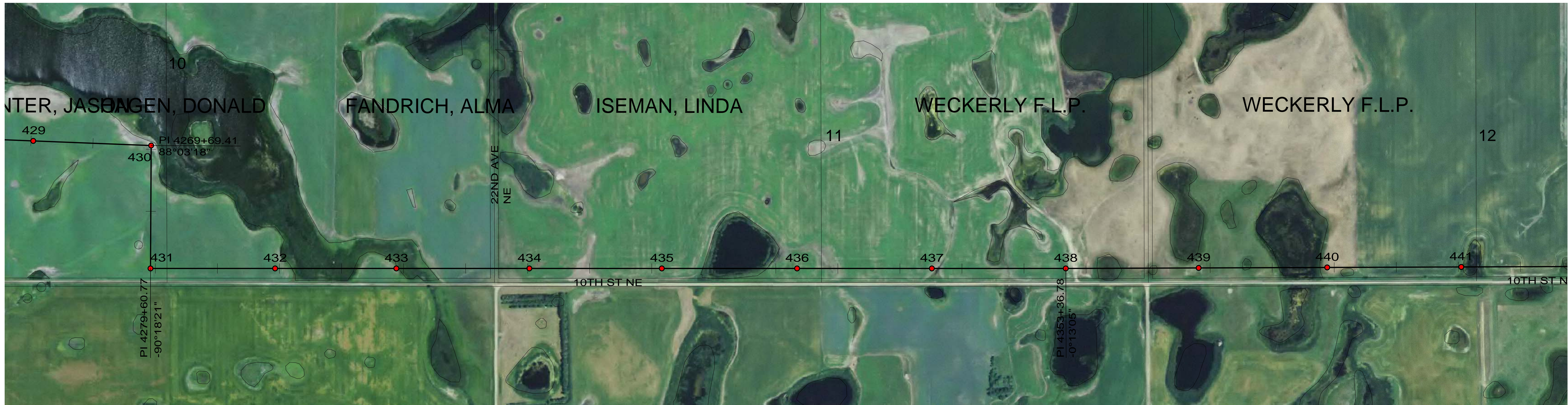
DESIGNED L.R.KETTER
 DRAWN B.E.CAMPBELL
 CHECKED H.W.DILLABOUGH
 APPROVED K.J.HARROLD
 APPROVED
 DATE 01/11/2013



SHERIDAN COUNTY

400.0 FT. HORIZ. SCALE
 40.0 FT. VERT. SCALE

| DRAWING | REV |
|------------------|-----|
| 055-PP-SH418-014 | 2 |



CONDUCTOR: 959.6 KCMIL SUWANNEE ACSR/TW DISPLAYED @ EXTREME ICE, NO WIND; CLEARANCE: 30 FT
 OPGW: 49F69S - 24 STRAND, DISPLAYED @ -30 DEGREES F
 SHIELD WIRE: 1/2" EHS STEEL, DISPLAYED @ -30 DEGREES F

| REV | DATE | APP | DESCRIPTION | DFTR |
|-----|----------|-----|---------------------------------|------|
| 2 | 10/01/14 | KJH | RECORD DRAWING | BEC |
| 1 | 05/10/13 | HWD | REGENERATION STATION RELOCATION | LRK |
| 0 | 01/11/13 | HWD | ISSUED FOR CONSTRUCTION | LRK |



8000 S. CHESTER STREET
 SUITE 500
 CENTENNIAL, CO 80112

A STANLEY GROUP COMPANY
 ENGINEERING, ENVIRONMENTAL AND
 CONSTRUCTION SERVICES - WORLDWIDE

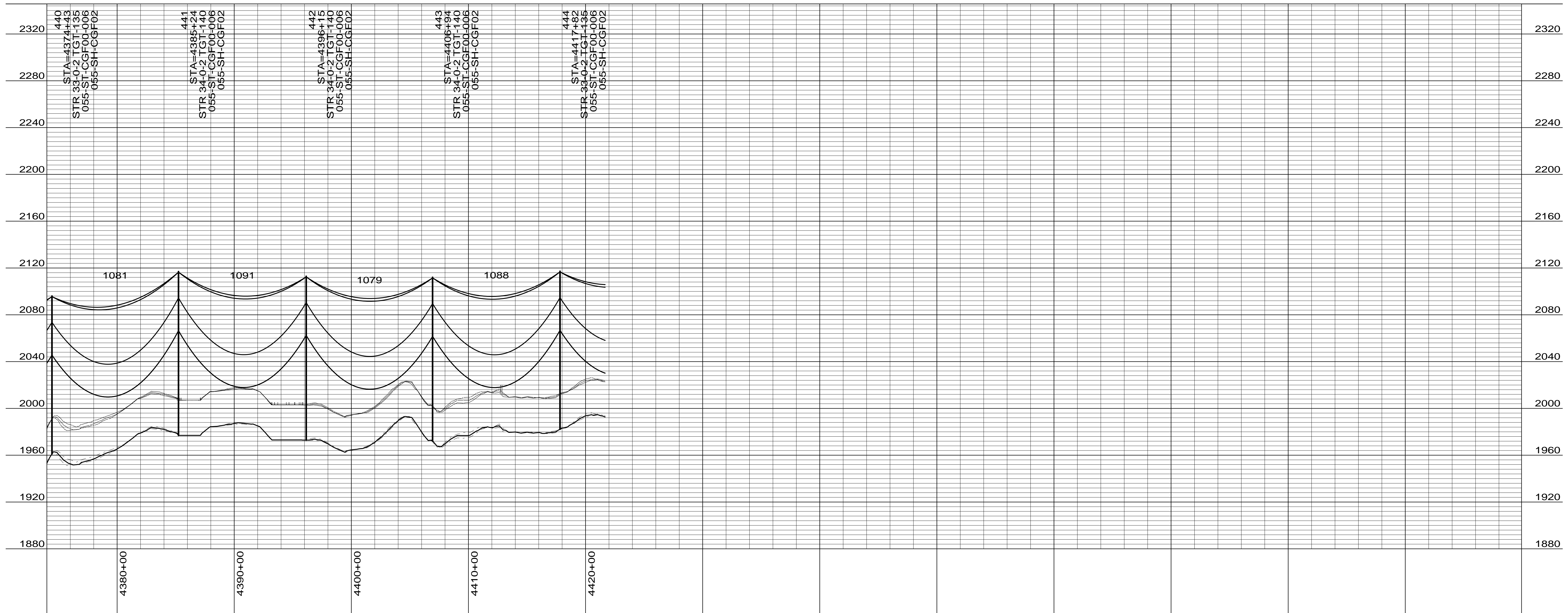
DESIGNED L.R.KETTER
 DRAWN B.E.CAMPBELL
 CHECKED H.W.DILLABOUGH
 APPROVED K.J.HARROLD
 APPROVED
 DATE 01/11/2013



SHERIDAN COUNTY

400.0 FT. HORIZ. SCALE
 40.0 FT. VERT. SCALE

| DRAWING | REV |
|------------------|-----|
| 055-PP-SH429-015 | 2 |



CONDUCTOR: 959.6 KCMIL SUWANNEE ACSR/TW DISPLAYED @ EXTREME ICE, NO WIND; CLEARANCE: 30 FT
 OPGW: 49F69S - 24 STRAND, DISPLAYED @ -30 DEGREES F
 SHIELD WIRE: 1/2" EHS STEEL, DISPLAYED @ -30 DEGREES F

| REV | DATE | APP | DESCRIPTION | DFTR |
|-----|----------|-----|---------------------------------|------|
| 2 | 10/01/14 | KJH | RECORD DRAWING | BEC |
| 1 | 05/10/13 | HWD | REGENERATION STATION RELOCATION | LRK |
| 0 | 01/11/13 | HWD | ISSUED FOR CONSTRUCTION | LRK |

8000 S. CHESTER STREET
 SUITE 500
 CENTENNIAL, CO 80112

A STANLEY GROUP COMPANY
 ENGINEERING, ENVIRONMENTAL AND
 CONSTRUCTION SERVICES - WORLDWIDE

DESIGNED L.R.KETTER
 DRAWN B.E.CAMPBELL
 CHECKED H.W.DILLABOUGH
 APPROVED K.J.HARROLD
 DATE 01/11/2013

Center to Grand Forks Project

COOPERATIVE, INC.

SHERIDAN COUNTY

400.0 FT. HORIZ. SCALE
 40.0 FT. VERT. SCALE

DRAWING
 055-PP-SH440-016

REV
 2