

CONDUCTOR: 959.6 KCMIL SUWANNEE ACSR/TW DISPLAYED @ EXTREME ICE, NO WIND; CLEARANCE: 30 FT
 OPGW: 49F69S - 24 STRAND, DISPLAYED @ -30 DEGREES F
 SHIELD WIRE: 1/2" EHS STEEL, DISPLAYED @ -30 DEGREES F

REV	DATE	APP	DESCRIPTION	DFTR
3	11/26/14	KJH	RECORD DRAWING	BEC
2	10/17/13	HWD	RELOCATED STRUCTURE 28 & 29	HWD
1	10/14/13	HWD	ADDED CONDUCTOR SPACER PLACEMENT LOCATIONS	HWD

8000 S. CHESTER STREET
 SUITE 500
 CENTENNIAL, CO 80112

A STANLEY GROUP COMPANY
 ENGINEERING, ENVIRONMENTAL AND
 CONSTRUCTION SERVICES - WORLDWIDE

DESIGNED L.R.KETTER
 DRAWN B.E.CAMPBELL
 CHECKED H.W.DILLABOUGH
 APPROVED K.J.HARROLD
 DATE 03/08/2013

Center to Grand Forks Project

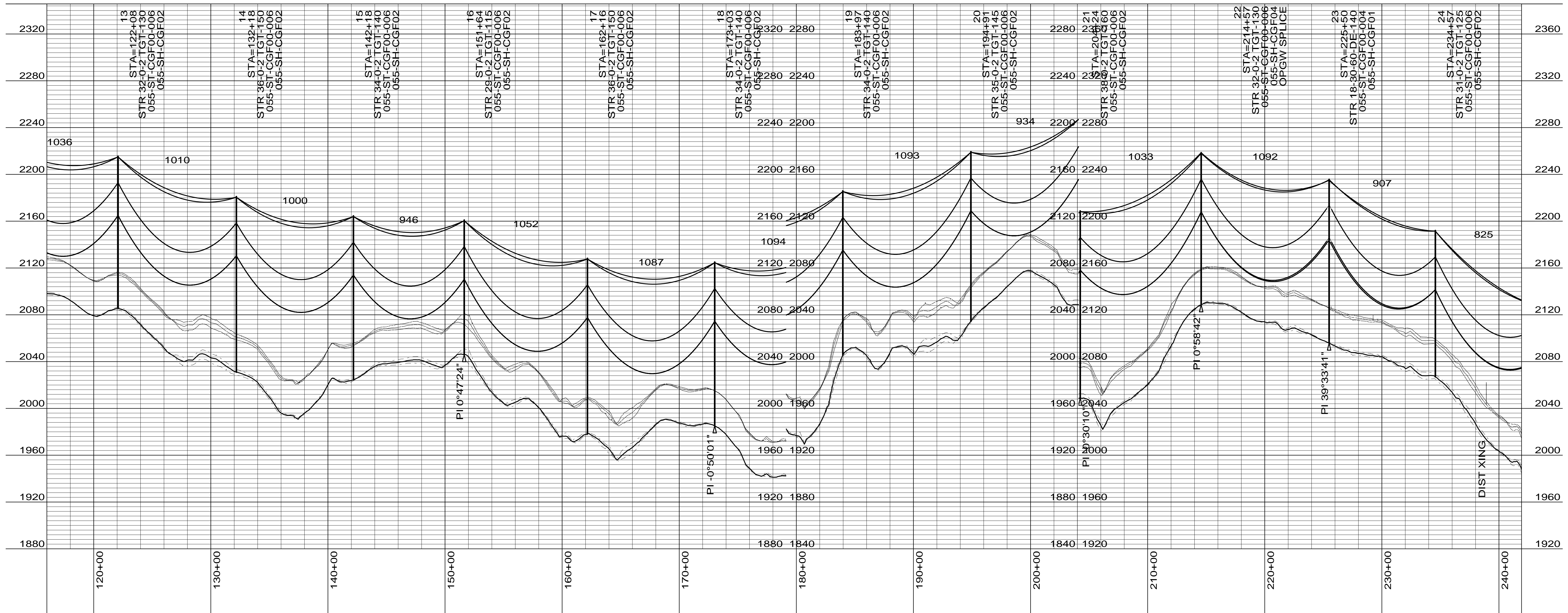
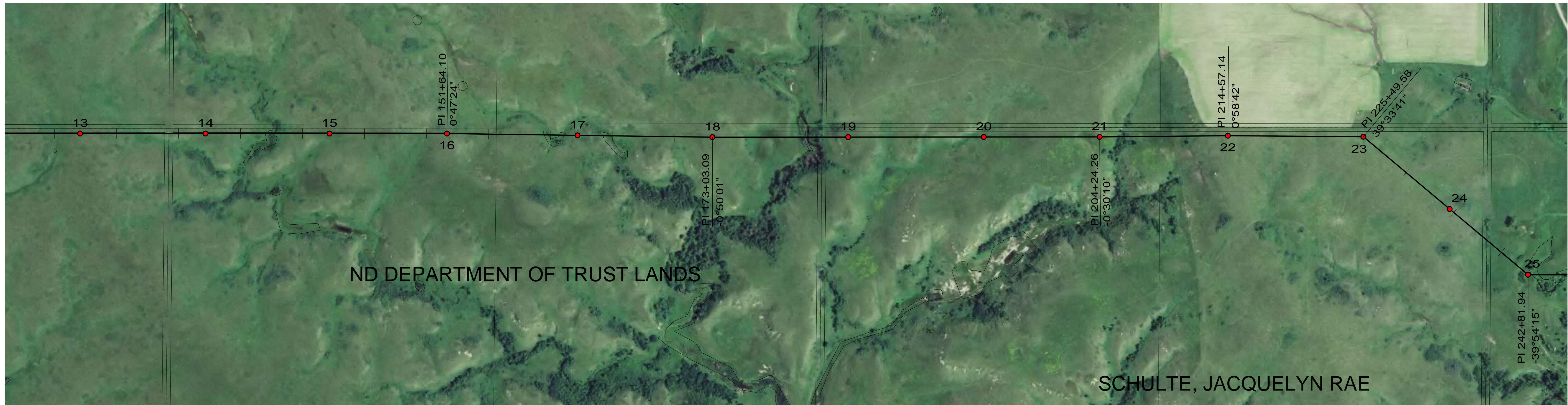
COOPERATIVE, INC.

OLIVER-BURLEIGH COUNTY

400.0 FT. HORIZ. SCALE
 40.0 FT. VERT. SCALE

DRAWING
 055-PP-OL000-001

REV
 3



CONDUCTOR: 959.6 KCMIL SUWANNEE ACSR/TW DISPLAYED @ EXTREME ICE, NO WIND; CLEARANCE: 30 FT
 OPGW: 49F69S - 24 STRAND, DISPLAYED @ -30 DEGREES F
 SHIELD WIRE: 1/2" EHS STEEL, DISPLAYED @ -30 DEGREES F

REV	DATE	APP	DESCRIPTION	DFTR
1	11/26/14	KJH	RECORD DRAWING	BEC
0	03/08/13	MFJ	ISSUED FOR CONSTRUCTION	LRK

8000 S. CHESTER STREET
 SUITE 500
 CENTENNIAL, CO 80112

A STANLEY GROUP COMPANY
 ENGINEERING, ENVIRONMENTAL AND
 CONSTRUCTION SERVICES - WORLDWIDE

DESIGNED L.R.KETTER
 DRAWN B.E.CAMPBELL
 CHECKED H.W.DILLABOUGH
 APPROVED K.J.HARROLD
 APPROVED
 DATE 03/08/2013

Center to Grand Forks Project

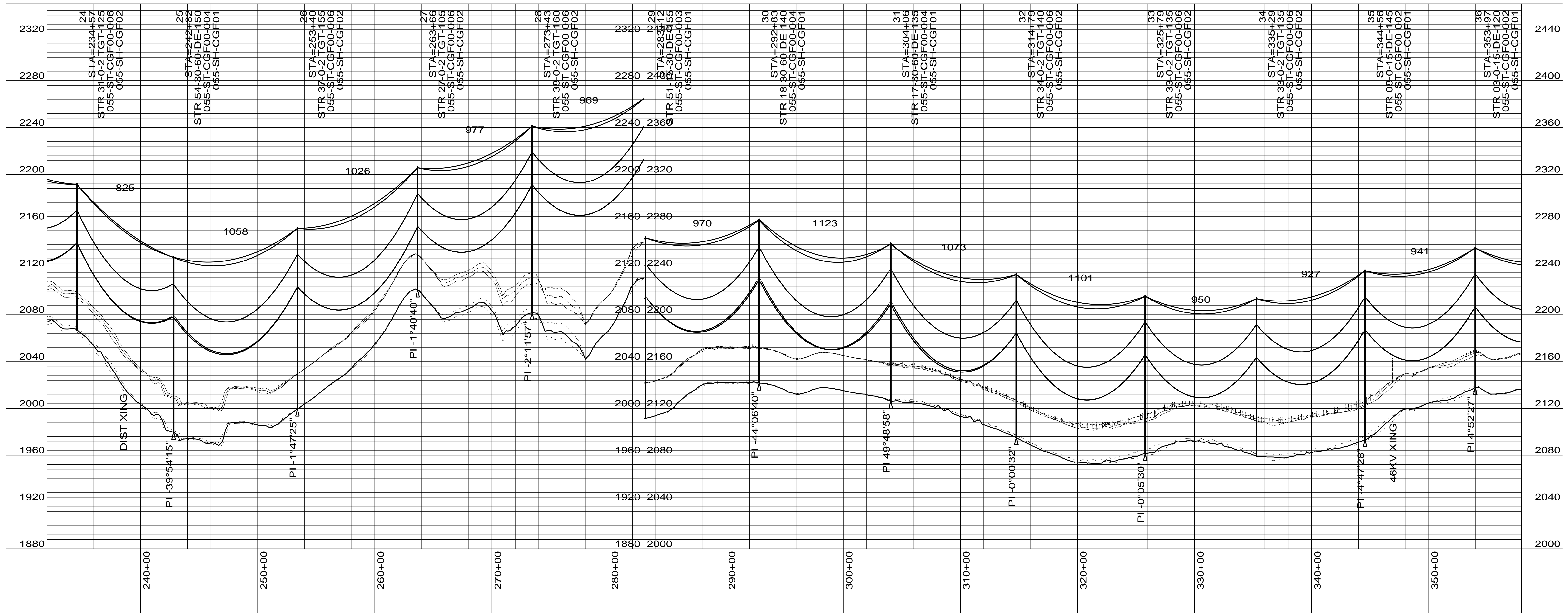
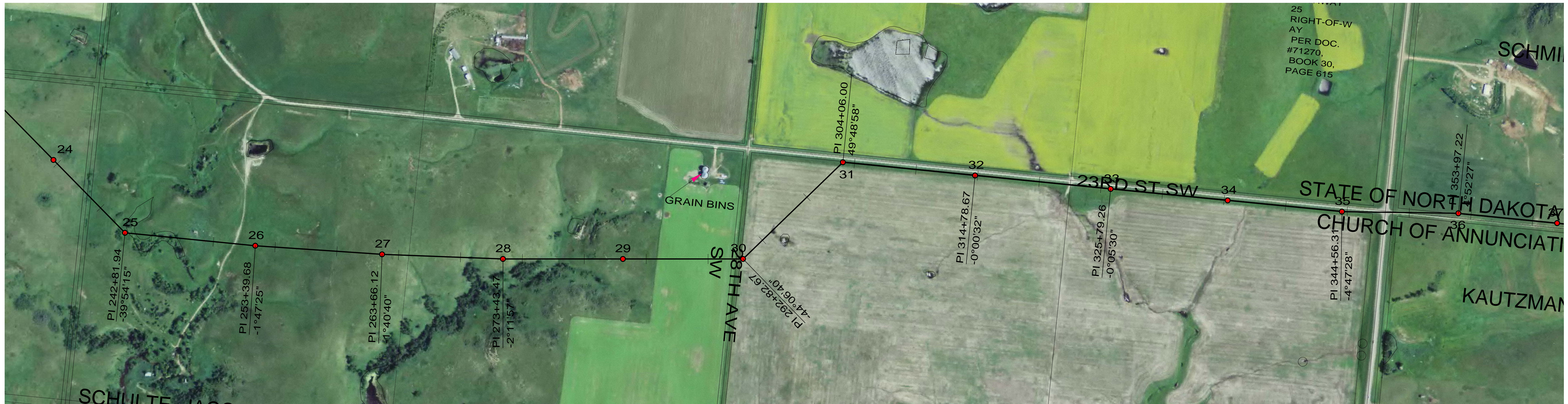
MPC COOPERATIVE, INC.

OLIVER-BURLEIGH COUNTY

400.0 FT. HORIZ. SCALE
 40.0 FT. VERT. SCALE

DRAWING
 055-PP-OL013-002

REV
 1



CONDUCTOR: 959.6 KCMIL SUWANNEE ACSR/TW DISPLAYED @ EXTREME ICE, NO WIND; CLEARANCE: 30 FT
 OPGW: 49F69S - 24 STRAND, DISPLAYED @ -30 DEGREES F
 SHIELD WIRE: 1/2" EHS STEEL, DISPLAYED @ -30 DEGREES F

REV	DATE	APP	DESCRIPTION	DFTR
2	11/26/14	KJH	RELOCATED STRUCTURE 28 & 29	BEC
1	10/17/13	HWD	ISSUED FOR CONSTRUCTION	HWD
0	03/08/13	MFJ		LRK

8000 S. CHESTER STREET
 SUITE 500
 CENTENNIAL, CO 80112

A STANLEY GROUP COMPANY
 ENGINEERING, ENVIRONMENTAL AND
 CONSTRUCTION SERVICES - WORLDWIDE

DESIGNED L.R.KETTER
 DRAWN B.E.CAMPBELL
 CHECKED H.W.DILLABOUGH
 APPROVED K.J.HARROLD
 APPROVED
 DATE 03/08/2013

Center to Grand Forks Project

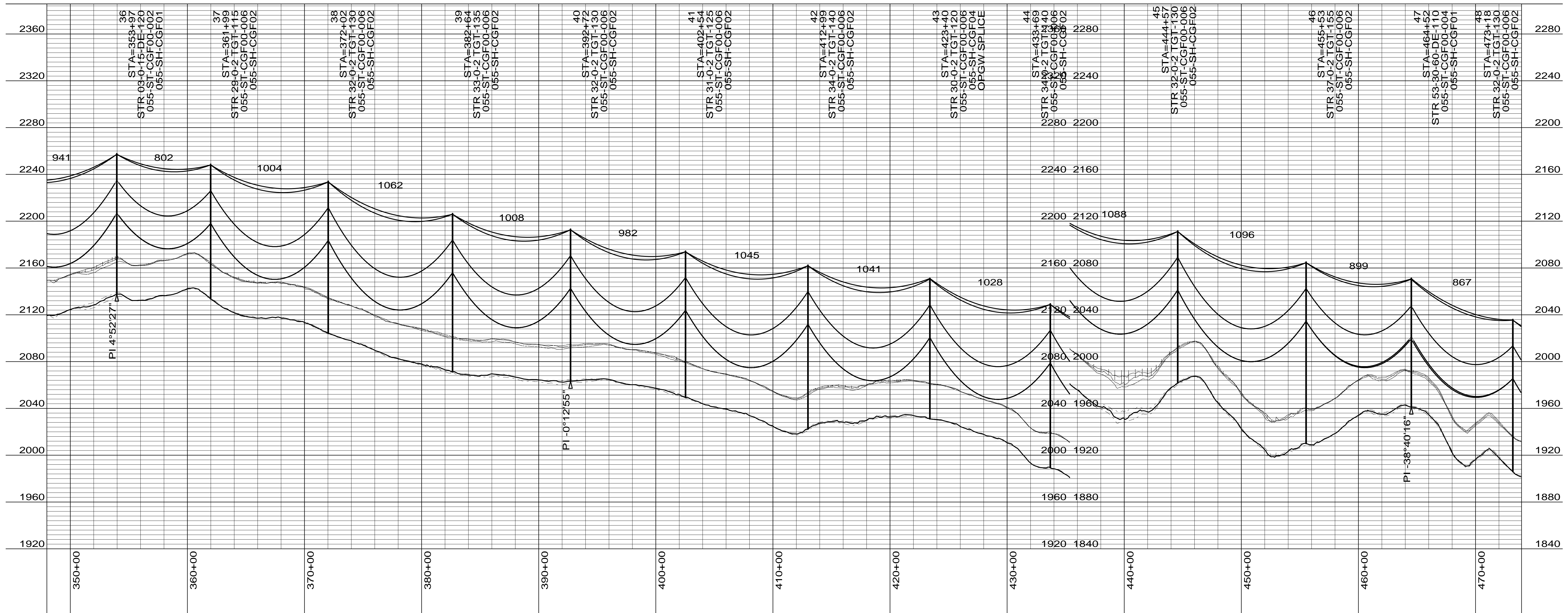
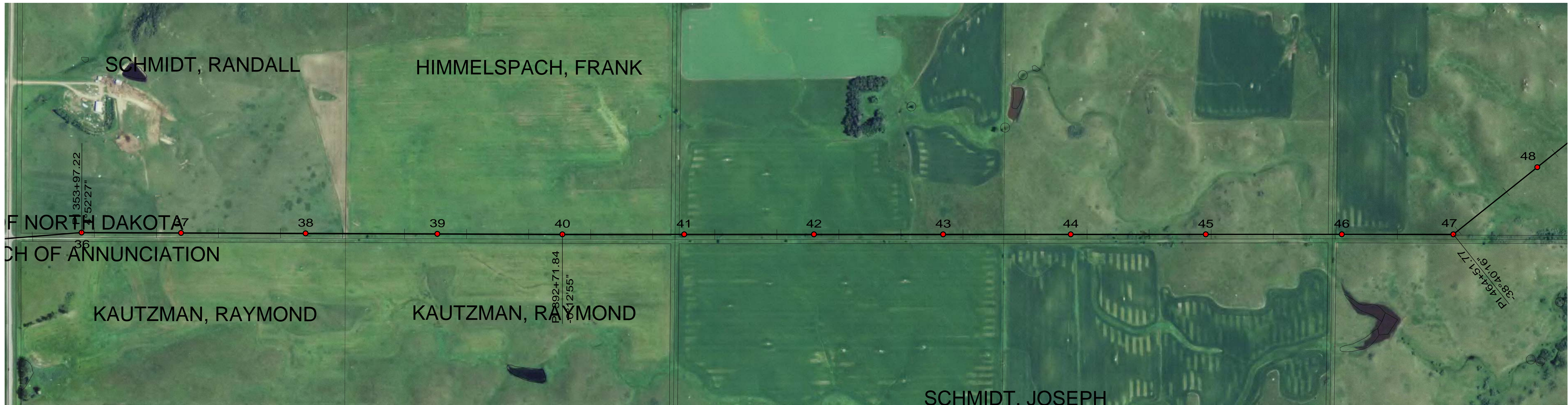
COOPERATIVE, INC.

OLIVER-BURLEIGH COUNTY

400.0 FT. HORIZ. SCALE
 40.0 FT. VERT. SCALE

DRAWING
 055-PP-OL024-003

REV
 2



CONDUCTOR: 959.6 KCMIL SUWANNEE ACSR/TW DISPLAYED @ EXTREME ICE, NO WIND; CLEARANCE: 30 FT
 OPGW: 49F69S - 24 STRAND, DISPLAYED @ -30 DEGREES F
 SHIELD WIRE: 1/2" EHS STEEL, DISPLAYED @ -30 DEGREES F

REV	DATE	APP	DESCRIPTION	DFTR
2	11/26/14	KJH	RECORD DRAWING	BEC
1	10/17/13	HWD	RELOCATED STRUCTURE 28 & 29	HWD
0	03/08/13	MFJ	ISSUED FOR CONSTRUCTION	LRK



Stanley Consultants INC.
 8000 S. CHESTER STREET
 SUITE 500
 CENTENNIAL, CO 80112

A STANLEY GROUP COMPANY
 ENGINEERING, ENVIRONMENTAL AND
 CONSTRUCTION SERVICES - WORLDWIDE

DESIGNED L.R.KETTER
 DRAWN B.E.CAMPBELL
 CHECKED H.W.DILLABOUGH
 APPROVED K.J.HARROLD
 APPROVED
 DATE 03/08/2013

Center to Grand Forks Project



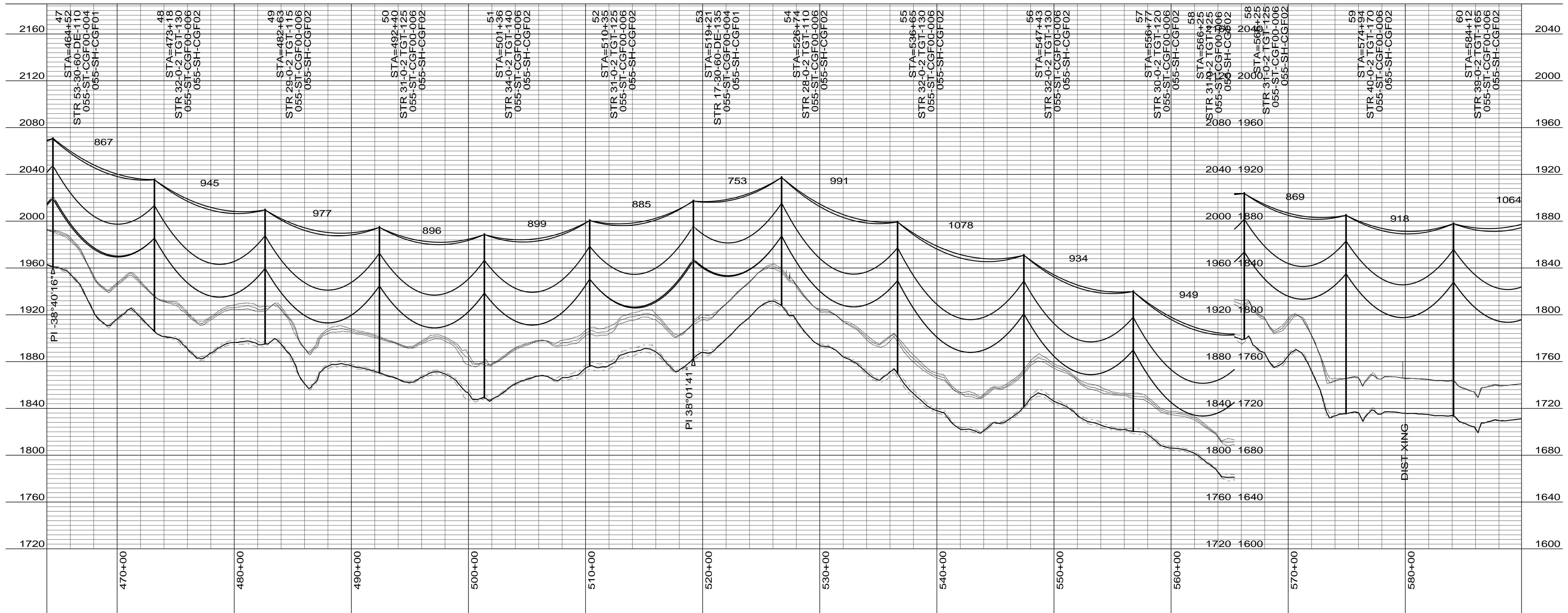
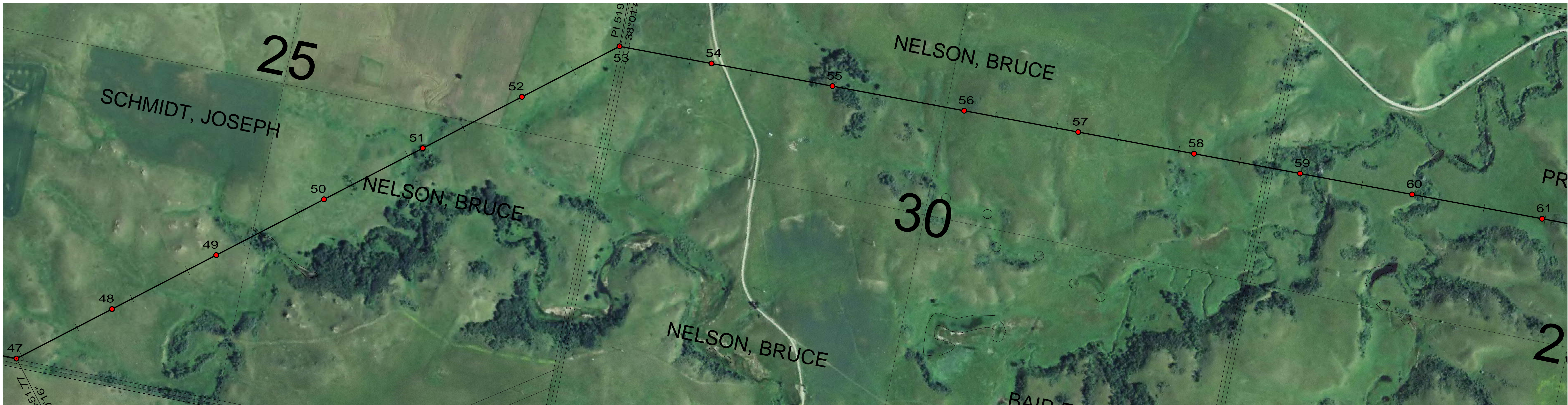
Minnkota Power
 COOPERATIVE, INC.

OLIVER-BURLEIGH COUNTY

400.0 FT. HORIZ. SCALE
 40.0 FT. VERT. SCALE

DRAWING
055-PP-OL036-004

REV
2



CONDUCTOR: 959.6 KCMIL SUWANNEE ACSR/TW DISPLAYED @ EXTREME ICE, NO WIND; CLEARANCE: 30 FT
 OPGW: 49F69S - 24 STRAND, DISPLAYED @ -30 DEGREES F
 SHIELD WIRE: 1/2" EHS STEEL, DISPLAYED @ -30 DEGREES F

REV	DATE	APP	DESCRIPTION	DFTR
2	11/26/14	KJH	RECORD DRAWING	BEC
1	10/17/13	HWD	RELOCATED STRUCTURE 28 & 29	HWD
0	03/08/13	MFJ	ISSUED FOR CONSTRUCTION	LRK



Stanley Consultants INC.

8000 S. CHESTER STREET
 SUITE 500
 CENTENNIAL, CO 80112

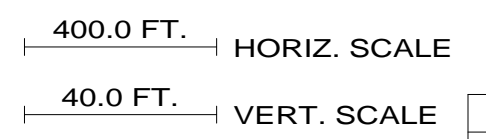
A STANLEY GROUP COMPANY
 ENGINEERING, ENVIRONMENTAL AND
 CONSTRUCTION SERVICES - WORLDWIDE

DESIGNED L.R.KETTER
 DRAWN B.E.CAMPBELL
 CHECKED H.W.DILLABOUGH
 APPROVED J.J.HARROLD
 APPROVED DATE 03/08/2013

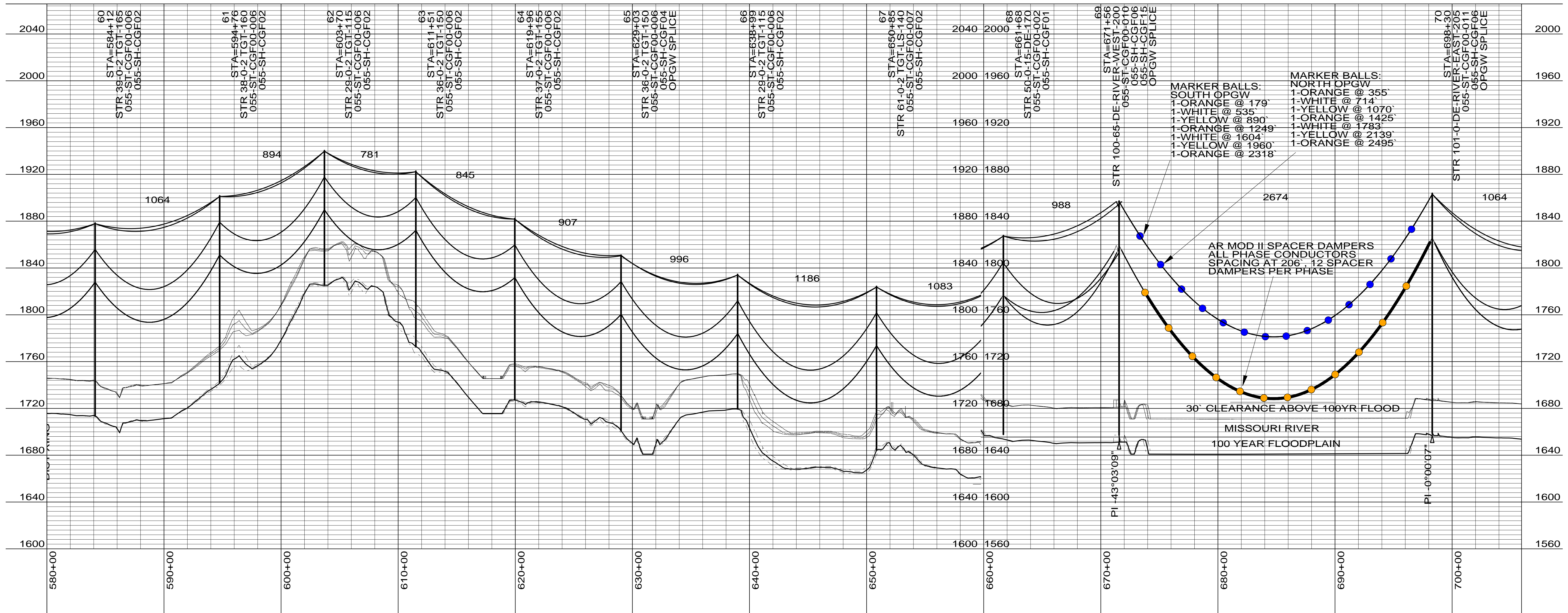
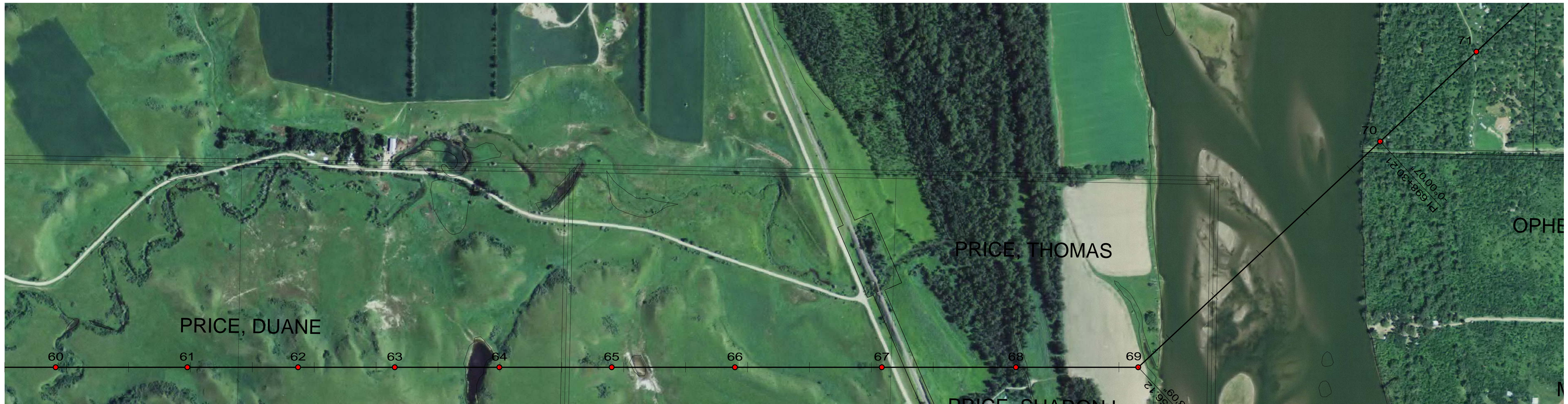
Center to Grand Forks Project



OLIVER-BURLEIGH COUNTY



DRAWING	REV
055-PP-OL047-005	2



CONDUCTOR: 959.6 KCMIL SUWANNEE ACSR/TW DISPLAYED @ EXTREME ICE, NO WIND; CLEARANCE: 30 FT
 OPGW: 49F69S - 24 STRAND, DISPLAYED @ -30 DEGREES F
 SHIELD WIRE: 1/2" EHS STEEL, DISPLAYED @ -30 DEGREES F

REV	DATE	APP	DESCRIPTION	DFTR
3	11/26/14	KJH	RECORD DRAWING	BEC
2	10/17/13	HWD	RELOCATED STRUCTURE 28 & 29	HWD
1	12/02/13	MFJ	ADDED SPACER DAMPER AND MARKER BALL PLACEMENT LOCATIONS	KJH

8000 S. CHESTER STREET
 SUITE 500
 CENTENNIAL, CO 80112

A STANLEY GROUP COMPANY
 ENGINEERING, ENVIRONMENTAL AND
 CONSTRUCTION SERVICES - WORLDWIDE

DESIGNED L.R.KETTER
 DRAWN B.E.CAMPBELL
 CHECKED H.W.DILLABOUGH
 APPROVED K.J.HARROLD
 APPROVED
 DATE 03/08/2013

Center to Grand Forks Project

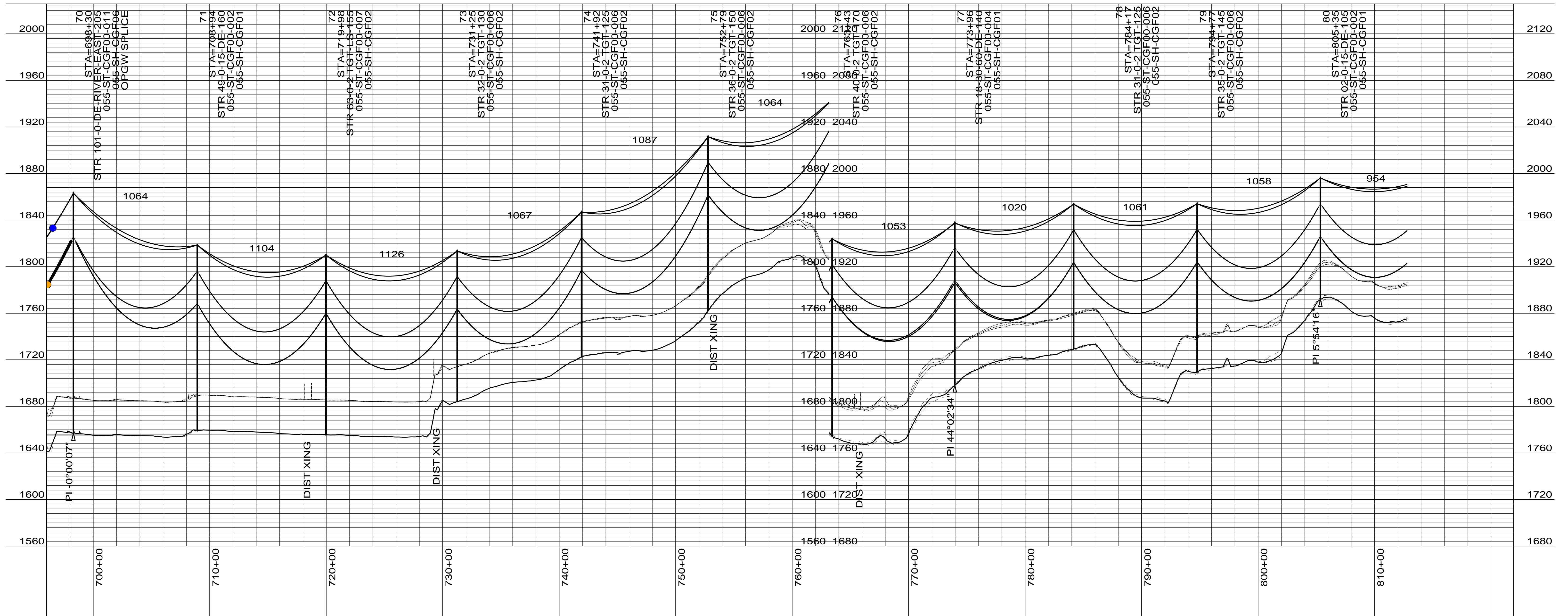
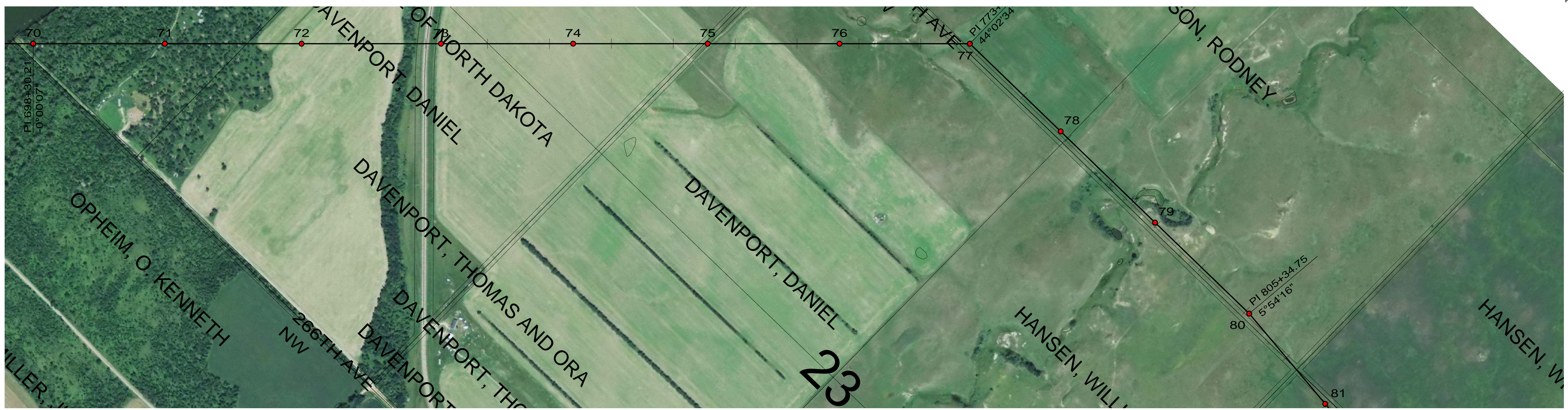
COOPERATIVE, INC.

OLIVER-BURLEIGH COUNTY

400.0 FT. HORIZ. SCALE
 40.0 FT. VERT. SCALE

DRAWING
 055-PP-OL060-006

REV
 3



CONDUCTOR: 959.6 KCMIL SUWANNEE ACSR/TW DISPLAYED @ EXTREME ICE, NO WIND; CLEARANCE: 30 FT
 OPGW: 49F69S - 24 STRAND, DISPLAYED @ -30 DEGREES F
 SHIELD WIRE: 1/2" EHS STEEL, DISPLAYED @ -30 DEGREES F

REV	DATE	APP	DESCRIPTION	DFTR
2	11/26/14	KJH	RECORD DRAWING	BEC
1	10/17/13	HWD	RELOCATED STRUCTURE 28 & 29	HWD
0	03/08/13	MFJ	ISSUED FOR CONSTRUCTION	LRK

8000 S. CHESTER STREET
 SUITE 500
 CENTENNIAL, CO 80112

A STANLEY GROUP COMPANY
 ENGINEERING, ENVIRONMENTAL AND
 CONSTRUCTION SERVICES - WORLDWIDE

DESIGNED L.R.KETTER
 DRAWN B.E.CAMPBELL
 CHECKED H.W.DILLABOUGH
 APPROVED K.J.HARROLD
 APPROVED
 DATE 03/08/2013

Center to Grand Forks Project

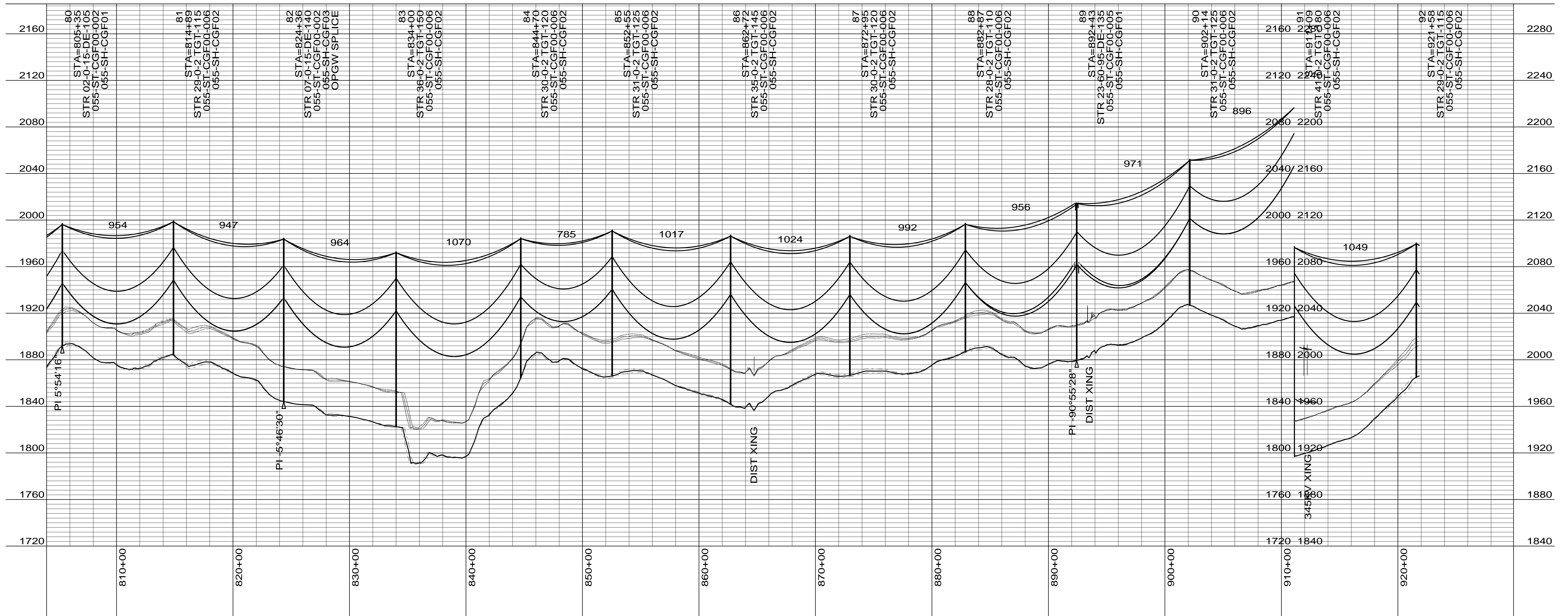
MPC COOPERATIVE, INC.

OLIVER-BURLEIGH COUNTY

400.0 FT. HORIZ. SCALE
 40.0 FT. VERT. SCALE

DRAWING
 055-PP-OL070-007

REV
 2



CONDUCTOR: 959.6 KCMIL SUWANNEE ACSR/TW DISPLAYED @ EXTREME ICE, NO WIND; CLEARANCE: 30 FT
 OPGW: 49F69S - 24 STRAND, DISPLAYED @ -30 DEGREES F
 SHIELD WIRE: 1/2" EHS STEEL, DISPLAYED @ -30 DEGREES F

REV	DATE	APP	DESCRIPTION	DFTR
2	11/26/14	KJH	RELOCATED STRUCTURE 28 & 29	BEC
1	10/17/13	HWD	ISSUED FOR CONSTRUCTION	HWD
0	03/08/13	MFJ		LRK

Stanley Consultants INC.
 8000 S. CHESTER STREET
 SUITE 500
 CENTENNIAL, CO 80112

A STANLEY GROUP COMPANY
 ENGINEERING, ENVIRONMENTAL AND
 CONSTRUCTION SERVICES - WORLDWIDE

DESIGNED L.R.KETTER
 DRAWN B.E.CAMPBELL
 CHECKED H.W.DILLABOUGH
 APPROVED K.J.HARROLD
 APPROVED
 DATE 03/08/2013

Center to Grand Forks Project

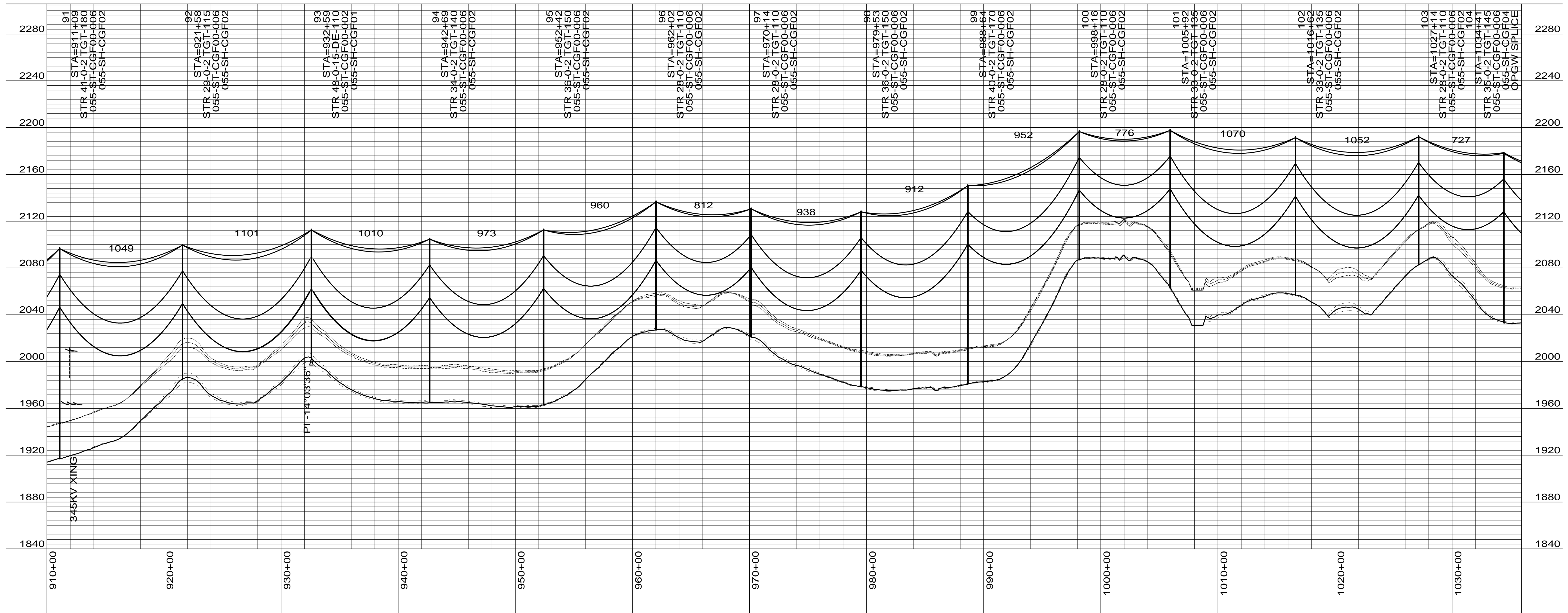
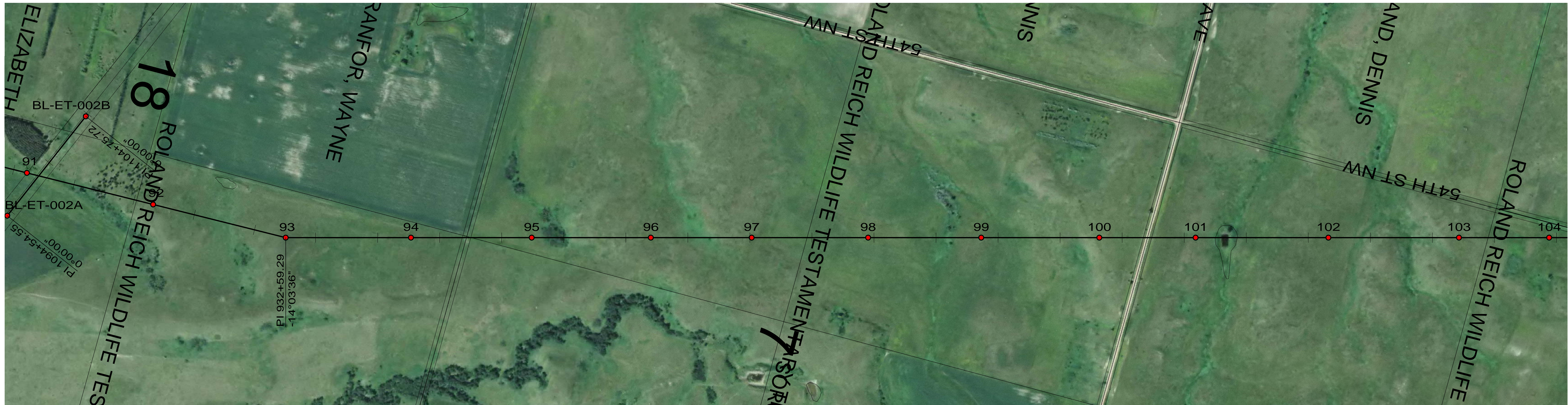
Minnkota Power
 COOPERATIVE, INC.

OLIVER-BURLEIGH COUNTY

400.0 FT. HORIZ. SCALE
 40.0 FT. VERT. SCALE

DRAWING
 055-PP-BR080-008

REV
 2



CONDUCTOR: 959.6 KCMIL SUWANNEE ACSR/TW DISPLAYED @ EXTREME ICE, NO WIND; CLEARANCE: 30 FT
 OPGW: 49F69S - 24 STRAND, DISPLAYED @ -30 DEGREES F
 SHIELD WIRE: 1/2" EHS STEEL, DISPLAYED @ -30 DEGREES F

REV	DATE	APP	DESCRIPTION	DFTR
2	11/26/14	KJH	RECORD DRAWING	BEC
1	10/17/13	HWD	RELOCATED STRUCTURE 28 & 29	HWD
0	03/08/13	MFJ	ISSUED FOR CONSTRUCTION	LRK

8000 S. CHESTER STREET
 SUITE 500
 CENTENNIAL, CO 80112

A STANLEY GROUP COMPANY
 ENGINEERING, ENVIRONMENTAL AND
 CONSTRUCTION SERVICES - WORLDWIDE

DESIGNED L.R.KETTER
 DRAWN B.E.CAMPBELL
 CHECKED H.W.DILLABOUGH
 APPROVED K.J.HARROLD
 APPROVED DATE 03/08/2013

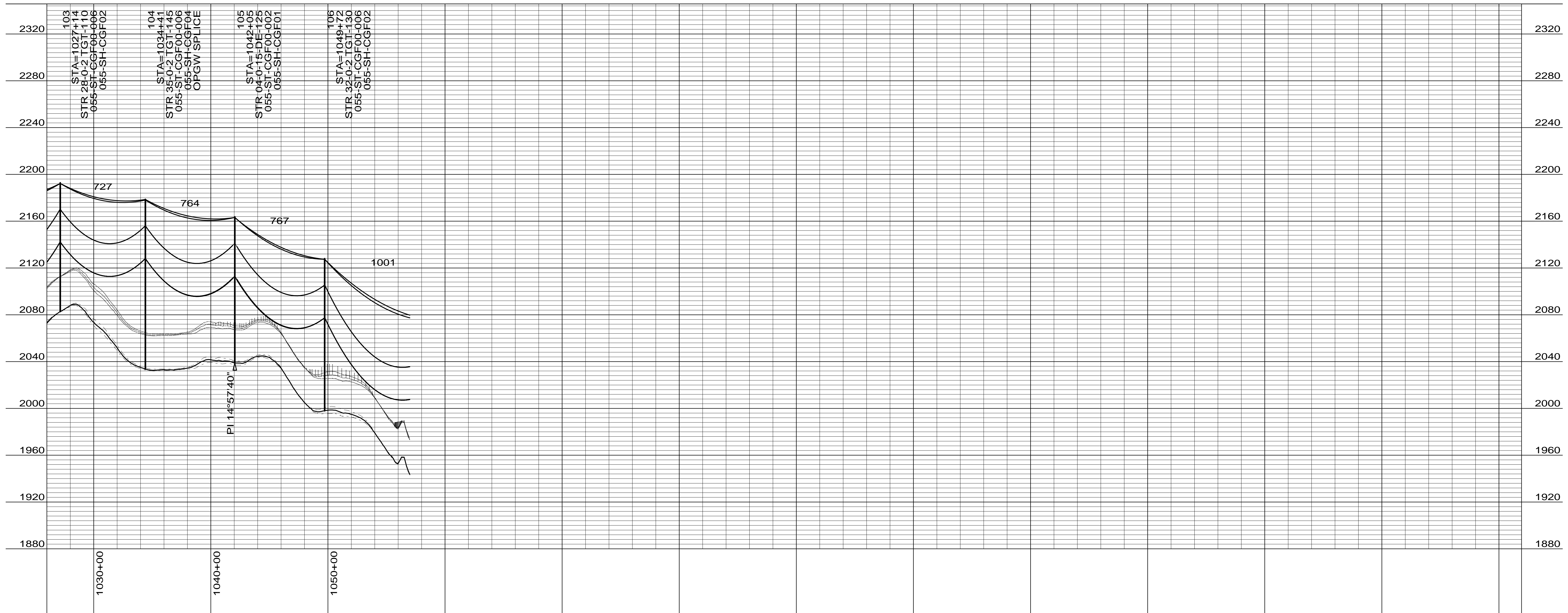
Center to Grand Forks Project

COOPERATIVE, INC.

OLIVER-BURLEIGH COUNTY

400.0 FT. HORIZ. SCALE
 40.0 FT. VERT. SCALE

DRAWING 055-PP-BR092-009
 REV 2



CONDUCTOR: 959.6 KCMIL SUWANNEE ACSR/TW DISPLAYED @ EXTREME ICE, NO WIND; CLEARANCE: 30 FT
 OPGW: 49F69S - 24 STRAND, DISPLAYED @ -30 DEGREES F
 SHIELD WIRE: 1/2" EHS STEEL, DISPLAYED @ -30 DEGREES F

REV	DATE	APP	DESCRIPTION	DFTR
2	11/26/14	KJH	RECORD DRAWING	BEC
1	10/17/13	HWD	RELOCATED STRUCTURE 28 & 29	HWD
0	03/08/13	MFJ	ISSUED FOR CONSTRUCTION	LRK



8000 S. CHESTER STREET
 SUITE 500
 CENTENNIAL, CO 80112

Stanley Consultants INC.

A STANLEY GROUP COMPANY
 ENGINEERING, ENVIRONMENTAL AND
 CONSTRUCTION SERVICES - WORLDWIDE

DESIGNED L.R.KETTER
 DRAWN B.E.CAMPBELL
 CHECKED H.W.DILLABOUGH
 APPROVED K.J.HARROLD
 APPROVED
 DATE 03/08/2013

Center to Grand Forks Project



Minnkota Power
 COOPERATIVE, INC.

OLIVER-BURLEIGH COUNTY

400.0 FT. HORIZ. SCALE
 40.0 FT. VERT. SCALE

DRAWING
055-PP-BR104-010

REV
2