

CONDUCTOR: 959.6 KCML SUWANNEE ACSR/TW DISPLAYED @ EXTREME ICE, NO WIND; CLEARANCE: 30 FT
 OPGW: 49F69S - 24 STRAND, DISPLAYED @ -30 DEGREES F
 SHIELD WIRE: 1/2" EHS STEEL, DISPLAYED @ -30 DEGREES F

REV	DATE	APP	DESCRIPTION	DFTR
1	10/01/14	KJH	RECORD DRAWING	BEC
0	02/15/13	HWD	ISSUED FOR CONSTRUCTION	LRK

Stanley Consultants Inc.

8000 S. CHESTER STREET
 SUITE 500
 CENTENNIAL, CO 80112

A STANLEY GROUP COMPANY
 ENGINEERING, ENVIRONMENTAL AND
 CONSTRUCTION SERVICES - WORLDWIDE

DESIGNED L.R.KETTER
 DRAWN B.E.CAMPBELL
 CHECKED H.W.DILLABOUGH
 APPROVED K.J.HARROLD
 APPROVED
 DATE 02/11/2013

Center to Grand Forks Project

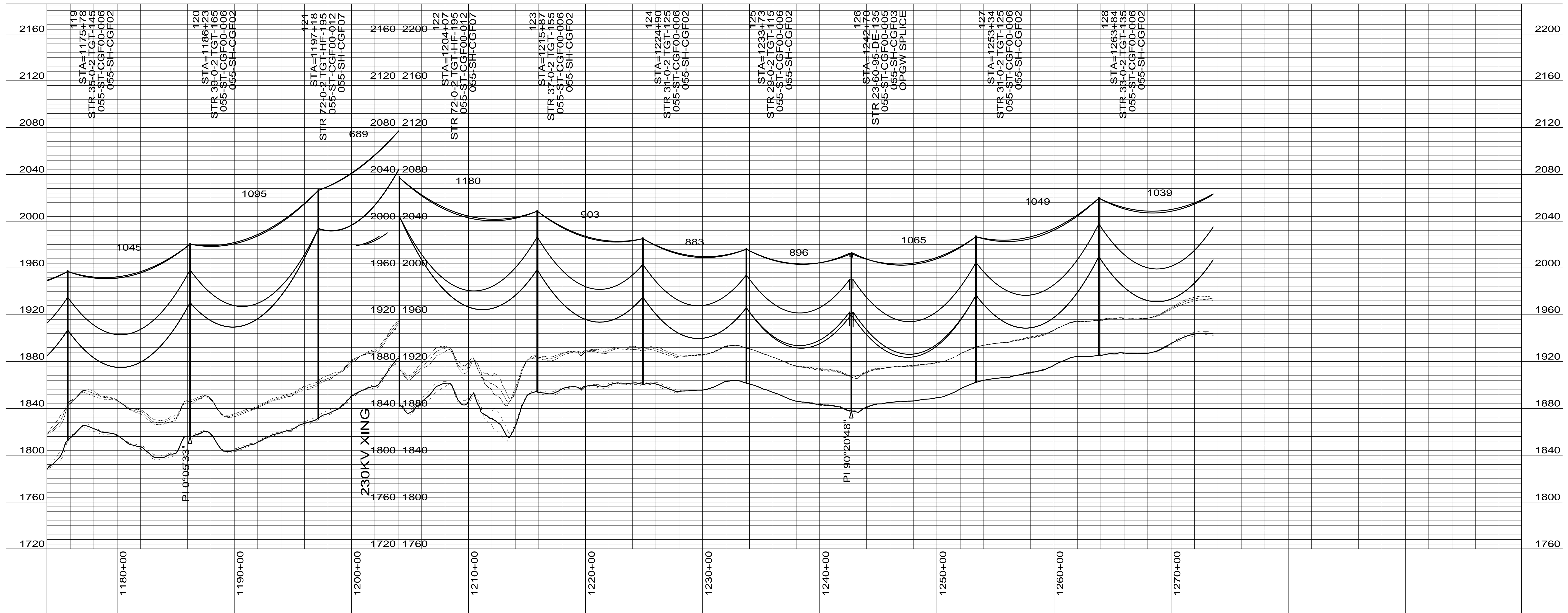
Minnkota Power
 COOPERATIVE, INC.

MCLEAN COUNTY

400.0 FT. HORIZ. SCALE
 40.0 FT. VERT. SCALE

DRAWING
055-PP-ML107-001

REV
1



CONDUCTOR: 959.6 KCMIL SUWANNEE ACSR/TW DISPLAYED @ EXTREME ICE, NO WIND; CLEARANCE: 30 FT
 OPGW: 49F69S - 24 STRAND, DISPLAYED @ -30 DEGREES F
 SHIELD WIRE: 1/2" EHS STEEL, DISPLAYED @ -30 DEGREES F

REV	DATE	APP	DESCRIPTION	DFTR
1	10/01/14	KJH	RECORD DRAWING	BEC
0	02/15/13	HWD	ISSUED FOR CONSTRUCTION	LRK

8000 S. CHESTER STREET
 SUITE 500
 CENTENNIAL, CO 80112

A STANLEY GROUP COMPANY
 ENGINEERING, ENVIRONMENTAL AND
 CONSTRUCTION SERVICES - WORLDWIDE

DESIGNED L.R.KETTER
 DRAWN B.E.CAMPBELL
 CHECKED H.W.DILLABOUGH
 APPROVED K.J.HARROLD
 APPROVED
 DATE 02/11/2013

Center to Grand Forks Project

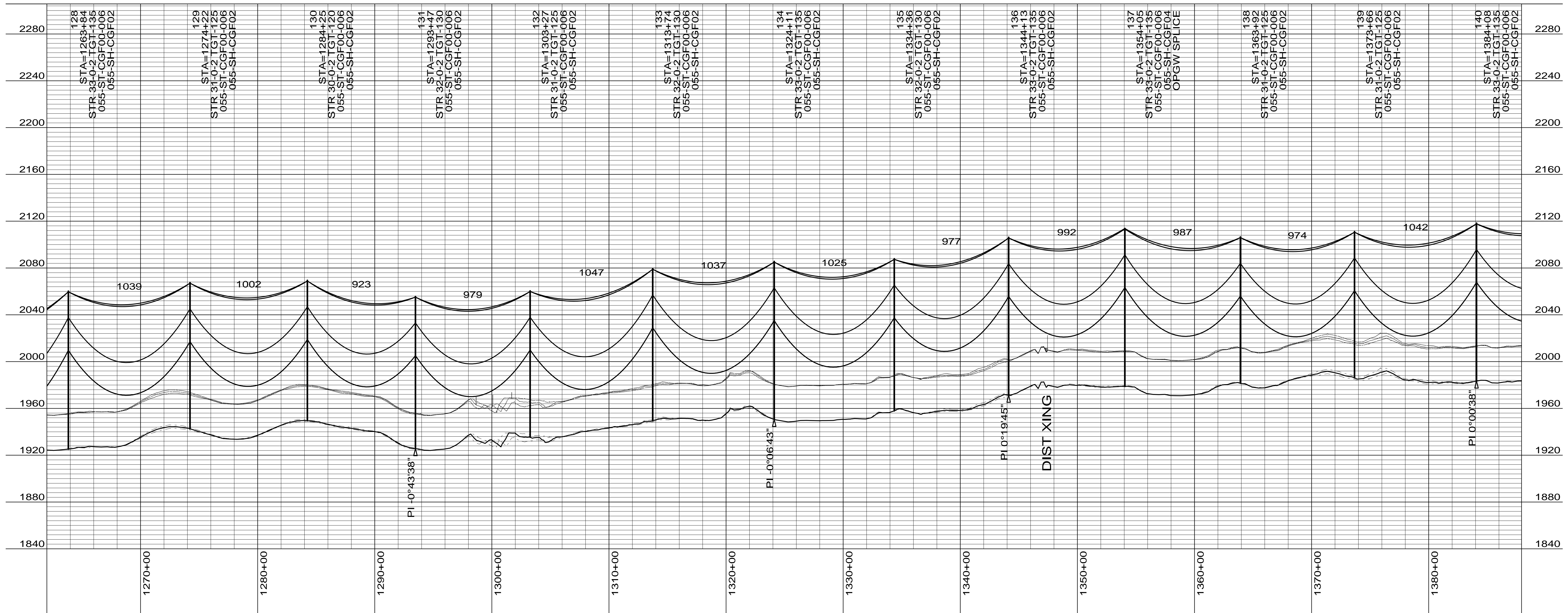
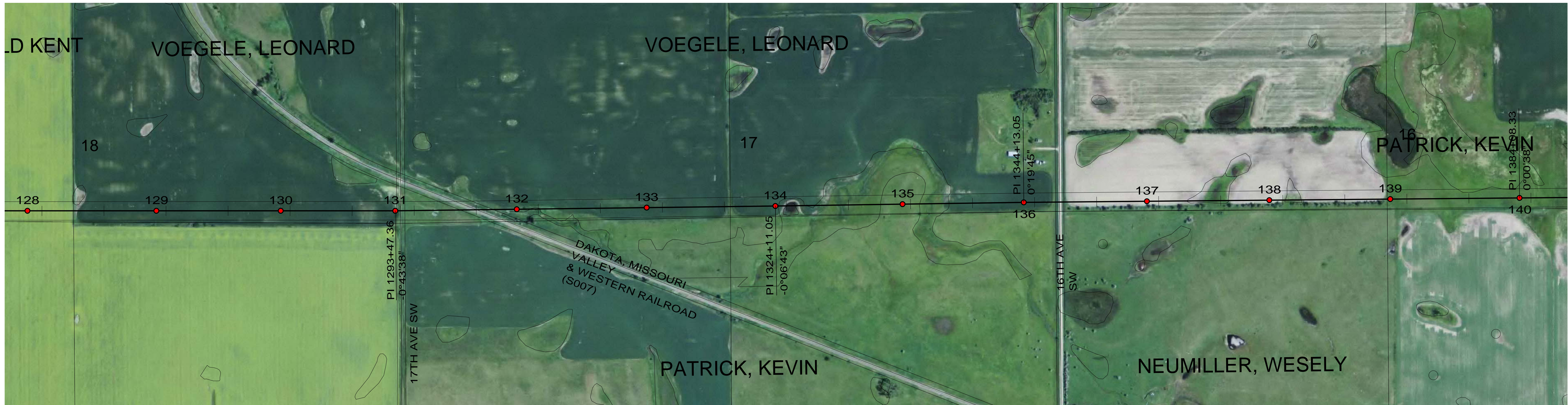
COOPERATIVE, INC.

MCLEAN COUNTY

400.0 FT. HORIZ. SCALE
 40.0 FT. VERT. SCALE

DRAWING
 055-PP-ML119-002

REV
 1



CONDUCTOR: 959.6 KCMIL SUWANNEE ACSR/TW DISPLAYED @ EXTREME ICE, NO WIND; CLEARANCE: 30 FT
 OPGW: 49F69S - 24 STRAND, DISPLAYED @ -30 DEGREES F
 SHIELD WIRE: 1/2" EHS STEEL, DISPLAYED @ -30 DEGREES F

REV	DATE	APP	DESCRIPTION	DFTR
2	10/01/14	KJH	RECORD DRAWING	BEC
1	06/12/13	MFJ	ADDED OPGW SPLICE AT STRUCTURE 137	KJH
0	02/15/13	HWD	ISSUED FOR CONSTRUCTION	LRK

Stanley Consultants INC.
 8000 S. CHESTER STREET
 SUITE 500
 CENTENNIAL, CO 80112

A STANLEY GROUP COMPANY
 ENGINEERING, ENVIRONMENTAL AND
 CONSTRUCTION SERVICES - WORLDWIDE

DESIGNED L.R.KETTER
 DRAWN B.E.CAMPBELL
 CHECKED H.W.DILLABOUGH
 APPROVED K.J.HARROLD
 APPROVED
 DATE 02/11/2013

Center to Grand Forks Project

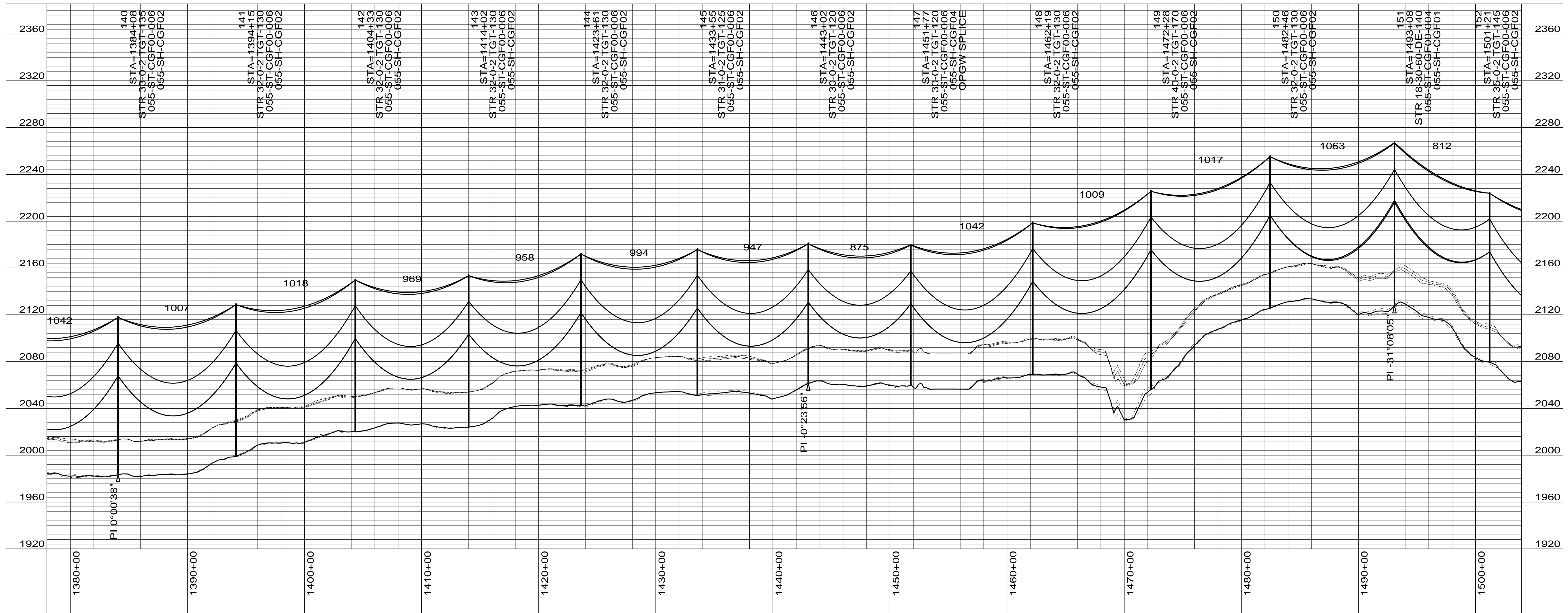
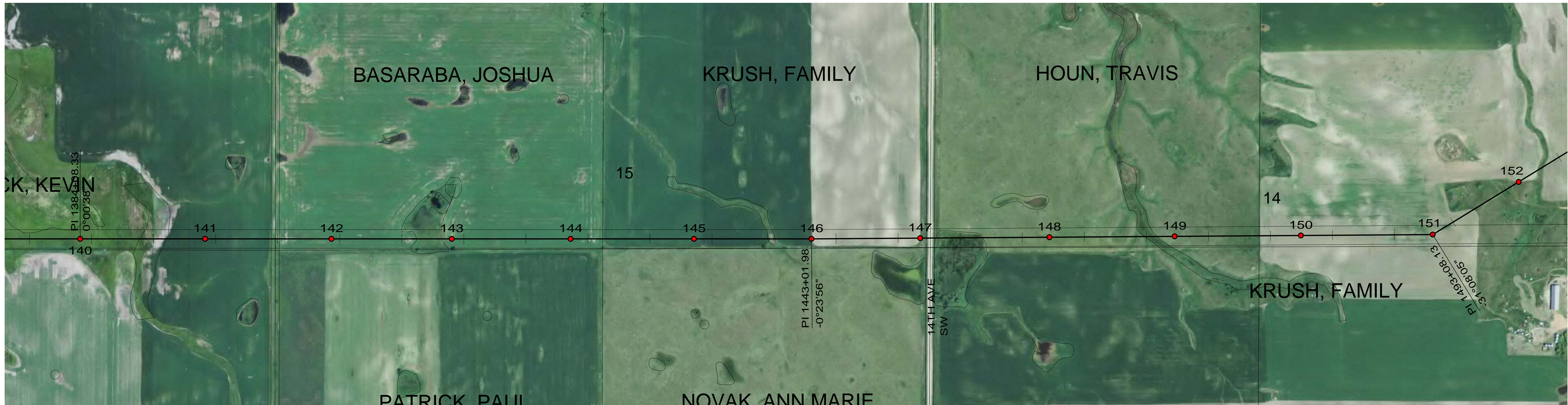
Minnkota Power
 COOPERATIVE, INC.

MCLEAN COUNTY

400.0 FT. HORIZ. SCALE
 40.0 FT. VERT. SCALE

DRAWING
 055-PP-ML128-003

REV
 2



CONDUCTOR: 959.6 KCMIL SUWANNEE ACSR/TW DISPLAYED @ EXTREME ICE, NO WIND; CLEARANCE: 30 FT
 OPGW: 49F69S - 24 STRAND, DISPLAYED @ -30 DEGREES F
 SHIELD WIRE: 1/2" EHS STEEL, DISPLAYED @ -30 DEGREES F

REV	DATE	APP	DESCRIPTION	DFTR
2	10/01/14	KJH	RECORD DRAWING	BEC
1	06/12/13	MFJ	MOVED STRUCTURE 147 30' WEST	KJH
0	02/15/13	HWD	ISSUED FOR CONSTRUCTION	LRK



Stanley Consultants INC.

8000 S. CHESTER STREET
 SUITE 500
 CENTENNIAL, CO 80112

A STANLEY GROUP COMPANY
 ENGINEERING, ENVIRONMENTAL AND
 CONSTRUCTION SERVICES - WORLDWIDE

DESIGNED L.R.KETTER
 DRAWN B.E.CAMPBELL
 CHECKED H.W.DILLABOUGH
 APPROVED K.J.HARROLD
 APPROVED
 DATE 02/11/2013

Center to Grand Forks Project



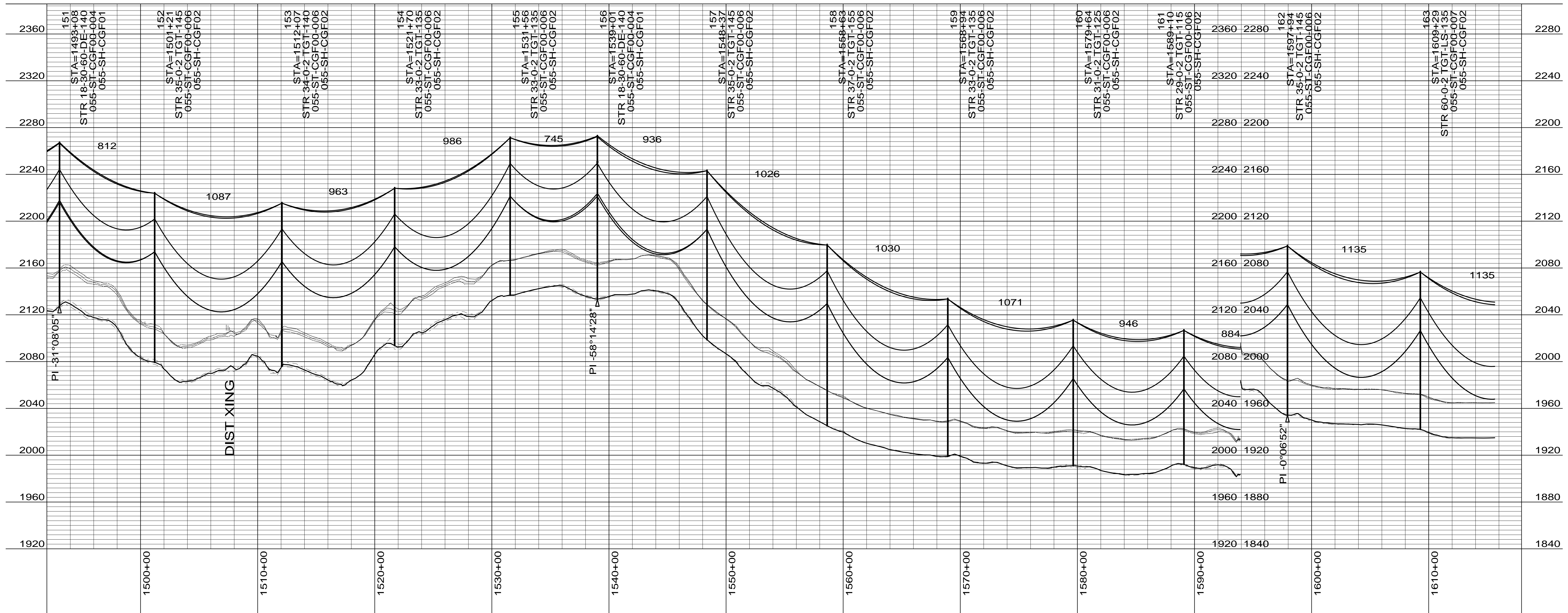
MPC COOPERATIVE, INC.

MCLEAN COUNTY

400.0 FT. HORIZ. SCALE
 40.0 FT. VERT. SCALE

DRAWING
055-PP-ML140-004

REV
2



CONDUCTOR: 959.6 KCMIL SUWANNEE ACSR/TW DISPLAYED @ EXTREME ICE, NO WIND; CLEARANCE: 30 FT
 OPGW: 49F69S - 24 STRAND, DISPLAYED @ -30 DEGREES F
 SHIELD WIRE: 1/2" EHS STEEL, DISPLAYED @ -30 DEGREES F

REV	DATE	APP	DESCRIPTION	DFTR
1	10/01/14	KJH	RECORD DRAWING	BEC
0	02/15/13	HWD	ISSUED FOR CONSTRUCTION	LRK

Stanley Consultants INC.

8000 S. CHESTER STREET
 SUITE 500
 CENTENNIAL, CO 80112

A STANLEY GROUP COMPANY
 ENGINEERING, ENVIRONMENTAL AND
 CONSTRUCTION SERVICES - WORLDWIDE

DESIGNED L.R.KETTER
 DRAWN B.E.CAMPBELL
 CHECKED H.W.DILLABOUGH
 APPROVED K.J.HARROLD
 APPROVED
 DATE 02/11/2013

Center to Grand Forks Project

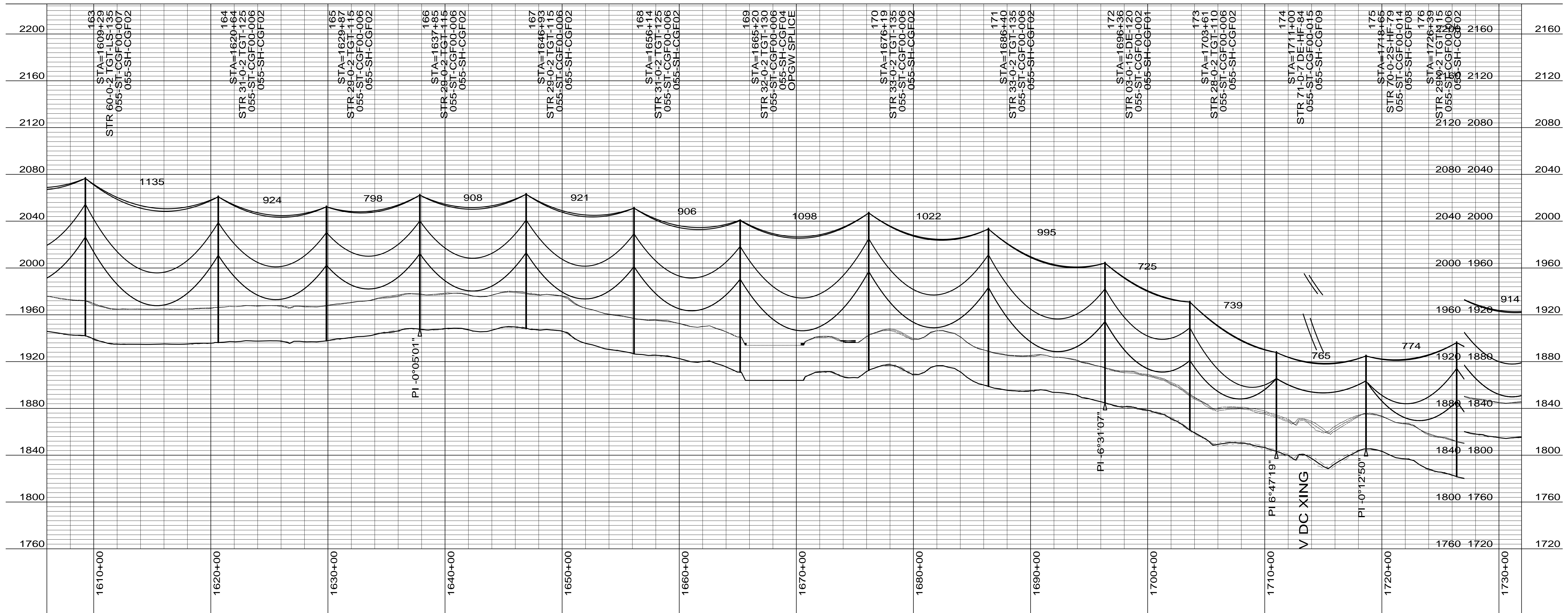
Minnkota Power
 COOPERATIVE, INC.

MCLEAN COUNTY

400.0 FT. HORIZ. SCALE
 40.0 FT. VERT. SCALE

DRAWING
 055-PP-ML152-005

REV
 1



CONDUCTOR: 959.6 KCMIL SUWANNEE ACSR/TW DISPLAYED @ EXTREME ICE, NO WIND; CLEARANCE: 30 FT
 OPGW: 49F69S - 24 STRAND, DISPLAYED @ -30 DEGREES F
 SHIELD WIRE: 1/2" EHS STEEL, DISPLAYED @ -30 DEGREES F

REV	DATE	APP	DESCRIPTION	DFTR
1	10/01/14	KJH	RECORD DRAWING	DFTR
0	02/15/13	HWD	ISSUED FOR CONSTRUCTION	DFTR

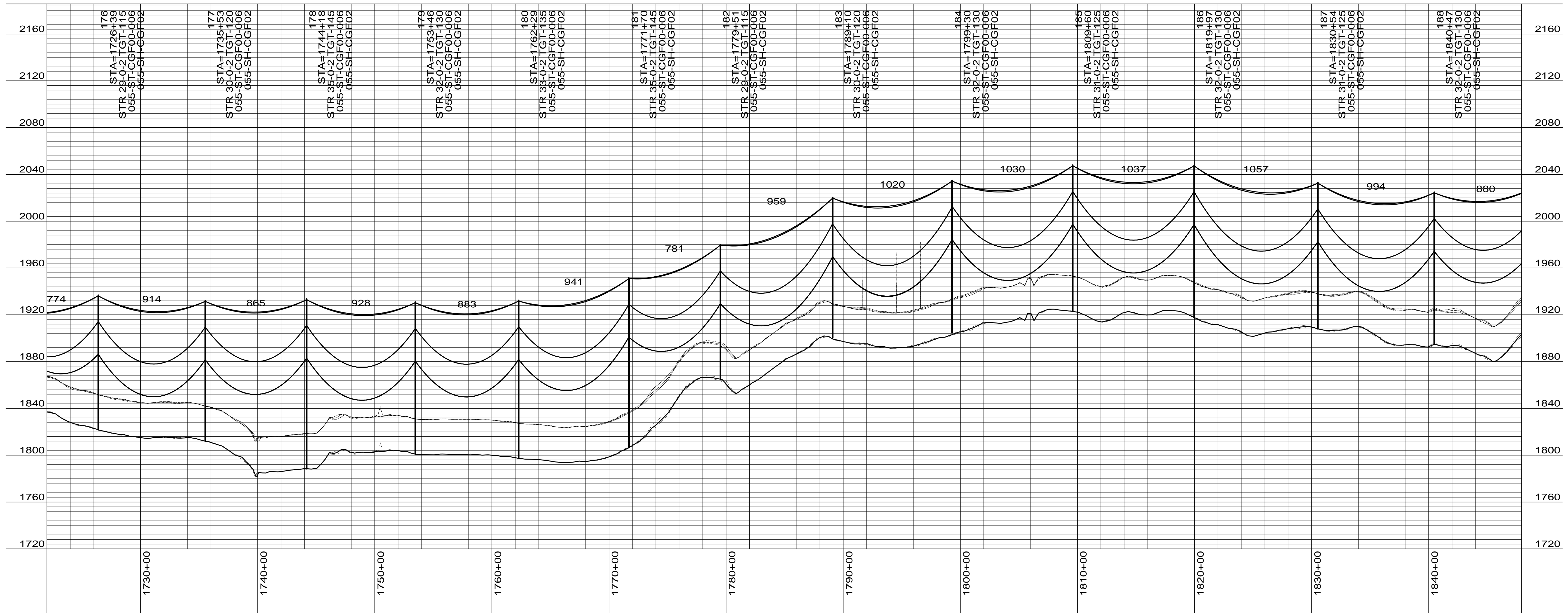
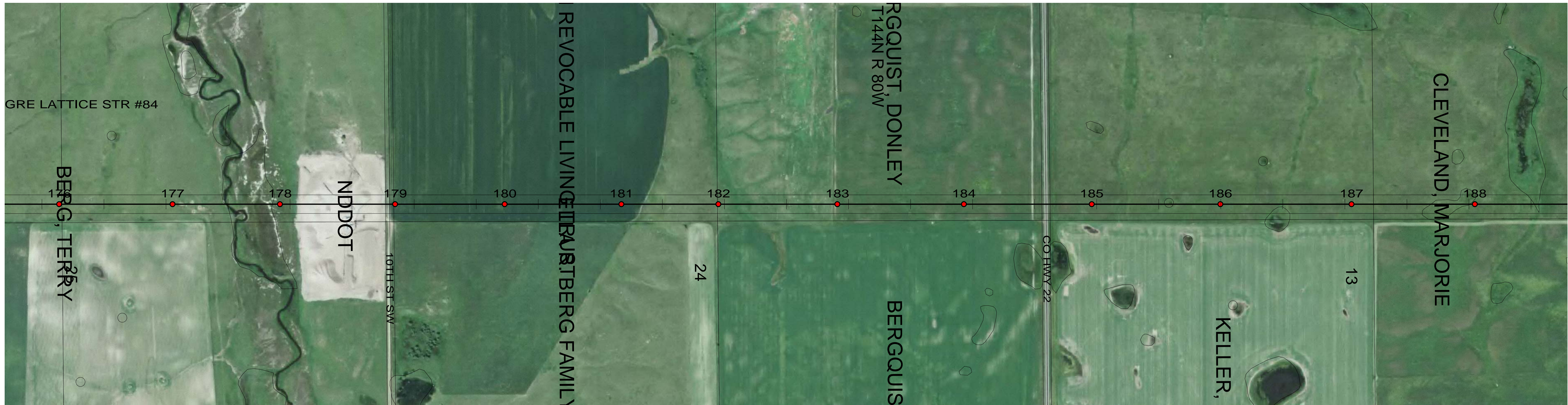

Stanley Consultants INC.
 8000 S. CHESTER STREET
 SUITE 500
 CENTENNIAL, CO 80112
 A STANLEY GROUP COMPANY
 ENGINEERING, ENVIRONMENTAL AND
 CONSTRUCTION SERVICES - WORLDWIDE

DESIGNED L.R.KETTER
 DRAWN B.E.CAMPBELL
 CHECKED H.W.DILLABOUGH
 APPROVED K.J.HARROLD
 APPROVED _____
 DATE 02/11/2013

Center to Grand Forks Project

 COOPERATIVE, INC.

MCLEAN COUNTY
 400.0 FT. HORIZ. SCALE
 40.0 FT. VERT. SCALE
 DRAWING
055-PP-ML164-006
 REV
1



CONDUCTOR: 959.6 KCMIL SUWANNEE ACSR/TW DISPLAYED @ EXTREME ICE, NO WIND; CLEARANCE: 30 FT
 OPGW: 49F69S - 24 STRAND, DISPLAYED @ -30 DEGREES F
 SHIELD WIRE: 1/2" EHS STEEL, DISPLAYED @ -30 DEGREES F

REV	DATE	APP	DESCRIPTION	DFTR
2	10/01/14	KJH	RECORD DRAWING	BEC
1	06/12/13	MFJ	MOVED STRUCTURE 179 30' NORTH	KJH
0	02/15/13	HWD	ISSUED FOR CONSTRUCTION	LRK

Stanley Consultants INC.

8000 S. CHESTER STREET
 SUITE 500
 CENTENNIAL, CO 80112

A STANLEY GROUP COMPANY
 ENGINEERING, ENVIRONMENTAL AND
 CONSTRUCTION SERVICES - WORLDWIDE

DESIGNED L.R.KETTER
 DRAWN B.E.CAMPBELL
 CHECKED H.W.DILLABOUGH
 APPROVED K.J.HARROLD
 APPROVED
 DATE 02/11/2013

Center to Grand Forks Project

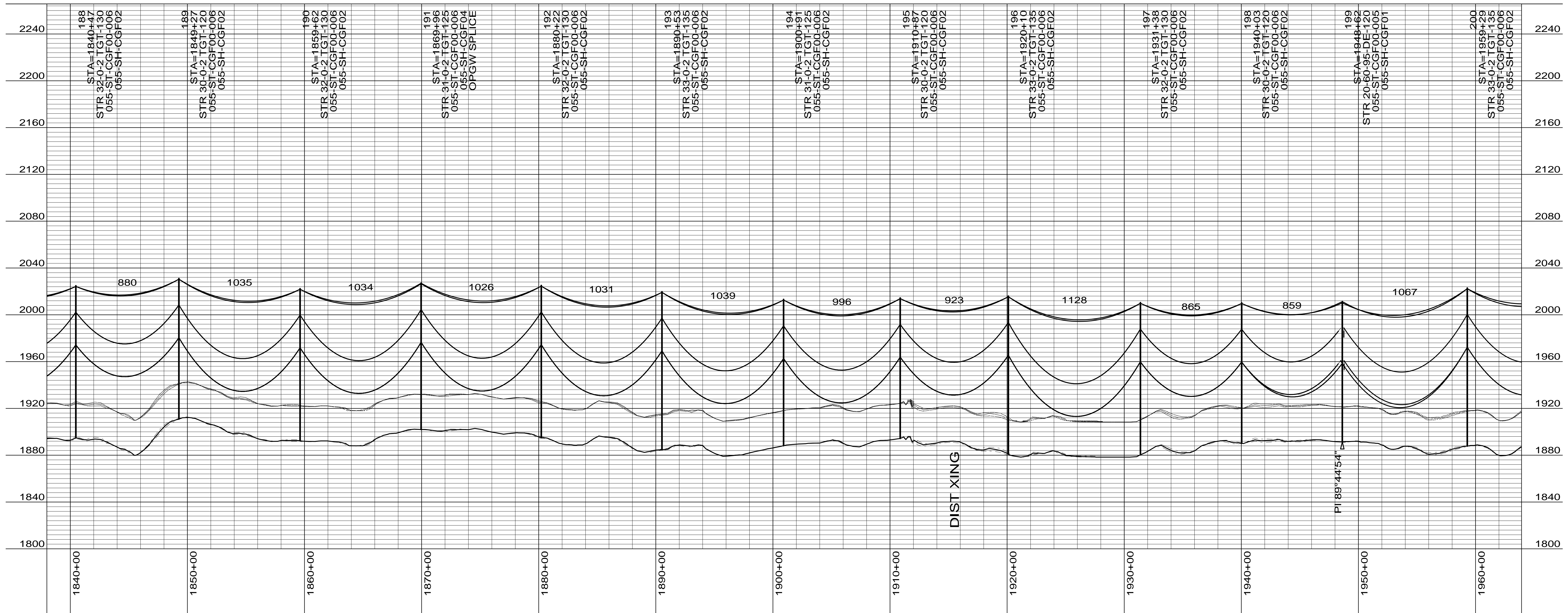
Minnkota Power
 COOPERATIVE, INC.

MCLEAN COUNTY

400.0 FT. HORIZ. SCALE
 40.0 FT. VERT. SCALE

DRAWING
 055-PP-ML176-007

REV
 2



CONDUCTOR: 959.6 KCMIL SUWANNEE ACSR/TW DISPLAYED @ EXTREME ICE, NO WIND; CLEARANCE: 30 FT
 OPGW: 49F69S - 24 STRAND, DISPLAYED @ -30 DEGREES F
 SHIELD WIRE: 1/2" EHS STEEL, DISPLAYED @ -30 DEGREES F

REV	DATE	APP	DESCRIPTION	DFTR
1	10/01/14	KJH	RECORD DRAWING	BEC
0	02/15/13	HWD	ISSUED FOR CONSTRUCTION	LRK



Stanley Consultants INC.
 8000 S. CHESTER STREET
 SUITE 500
 CENTENNIAL, CO 80112

A STANLEY GROUP COMPANY
 ENGINEERING, ENVIRONMENTAL AND
 CONSTRUCTION SERVICES - WORLDWIDE

DESIGNED L.R.KETTER
 DRAWN B.E.CAMPBELL
 CHECKED H.W.DILLABOUGH
 APPROVED K.J.HARROLD
 APPROVED
 DATE 02/11/2013

Center to Grand Forks Project



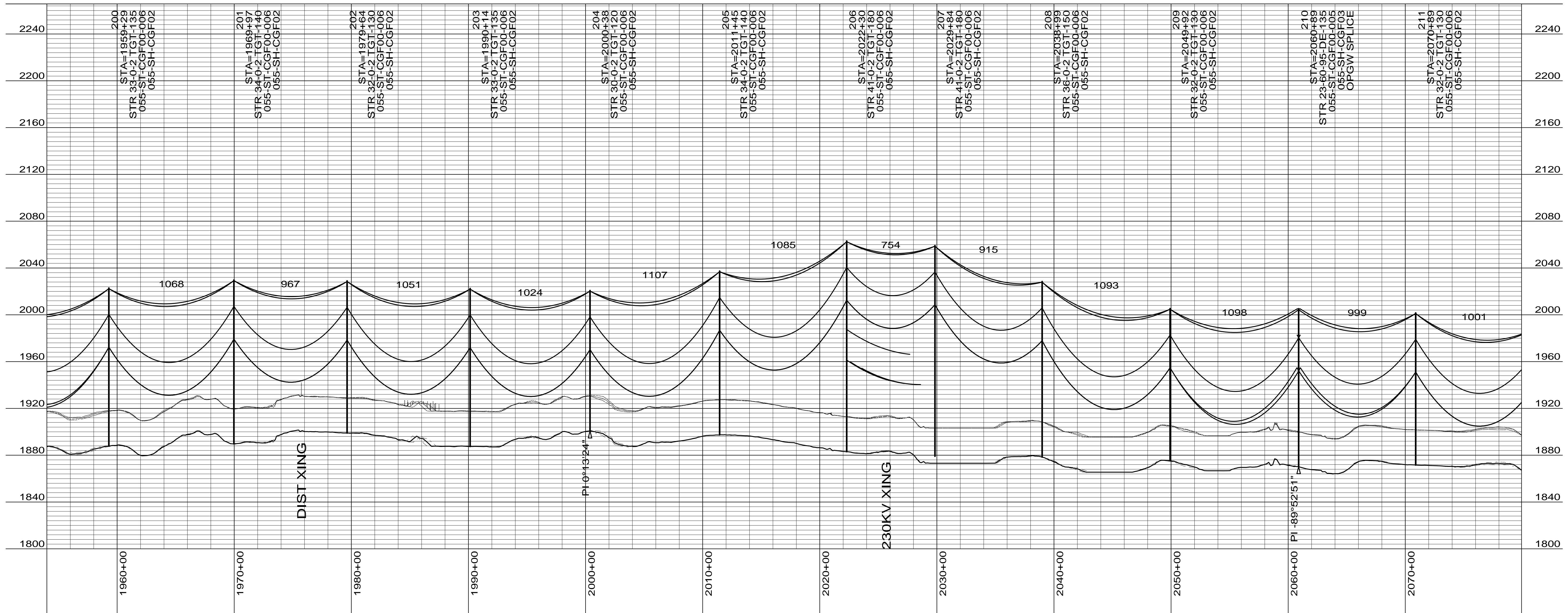
Minnkota Power
 COOPERATIVE, INC.

MCLEAN COUNTY

400.0 FT. HORIZ. SCALE
 40.0 FT. VERT. SCALE

DRAWING
055-PP-ML188-008

REV
1



CONDUCTOR: 959.6 KCMIL SUWANNEE ACSR/TW DISPLAYED @ EXTREME ICE, NO WIND; CLEARANCE: 30 FT
 OPGW: 49F69S - 24 STRAND, DISPLAYED @ -30 DEGREES F
 SHIELD WIRE: 1/2" EHS STEEL, DISPLAYED @ -30 DEGREES F

REV	DATE	APP	DESCRIPTION	DFTR
1	10/01/14	KJH	RECORD DRAWING	BEC
0	02/15/13	HWD	ISSUED FOR CONSTRUCTION	LRK

Stanley Consultants Inc.

8000 S. CHESTER STREET
 SUITE 500
 CENTENNIAL, CO 80112

A STANLEY GROUP COMPANY
 ENGINEERING, ENVIRONMENTAL AND
 CONSTRUCTION SERVICES - WORLDWIDE

DESIGNED L.R.KETTER
 DRAWN B.E.CAMPBELL
 CHECKED H.W.DILLABOUGH
 APPROVED K.J.HARROLD
 APPROVED
 DATE 02/11/2013

Center to Grand Forks Project

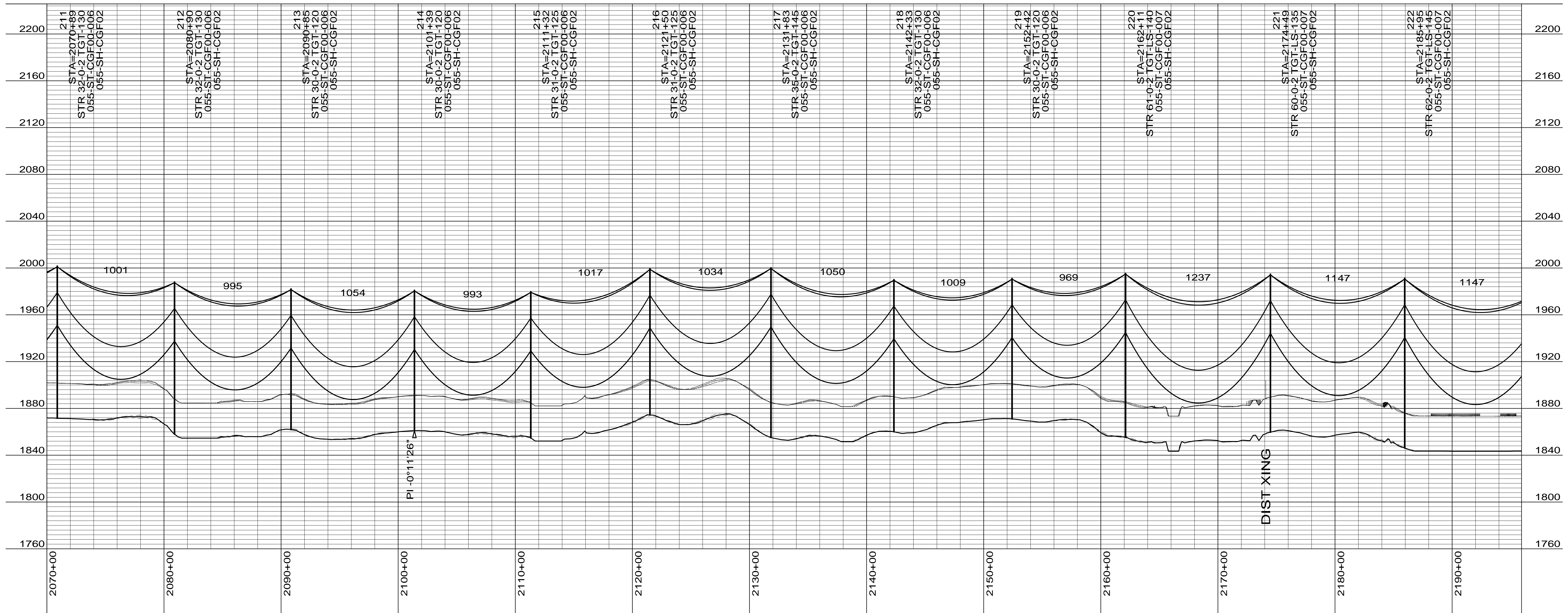
Minnkota Power
 COOPERATIVE, INC.

MCLEAN COUNTY

400.0 FT. HORIZ. SCALE
 40.0 FT. VERT. SCALE

DRAWING
 055-PP-ML200-009

REV
 1



CONDUCTOR: 959.6 KCMIL SUWANNEE ACSR/TW DISPLAYED @ EXTREME ICE, NO WIND; CLEARANCE: 30 FT
 OPGW: 49F69S - 24 STRAND, DISPLAYED @ -30 DEGREES F
 SHIELD WIRE: 1/2" EHS STEEL, DISPLAYED @ -30 DEGREES F

REV	DATE	APP	DESCRIPTION	DFTR
1	10/01/14	KJH	RECORD DRAWING	DFTR
0	02/15/13	HWD	ISSUED FOR CONSTRUCTION	DFTR

Stanley Consultants Inc.

8000 S. CHESTER STREET
 SUITE 500
 CENTENNIAL, CO 80112

A STANLEY GROUP COMPANY
 ENGINEERING, ENVIRONMENTAL AND
 CONSTRUCTION SERVICES - WORLDWIDE

DESIGNED L.R.KETTER
 DRAWN B.E.CAMPBELL
 CHECKED H.W.DILLABOUGH
 APPROVED K.J.HARROLD
 APPROVED
 DATE 02/11/2013

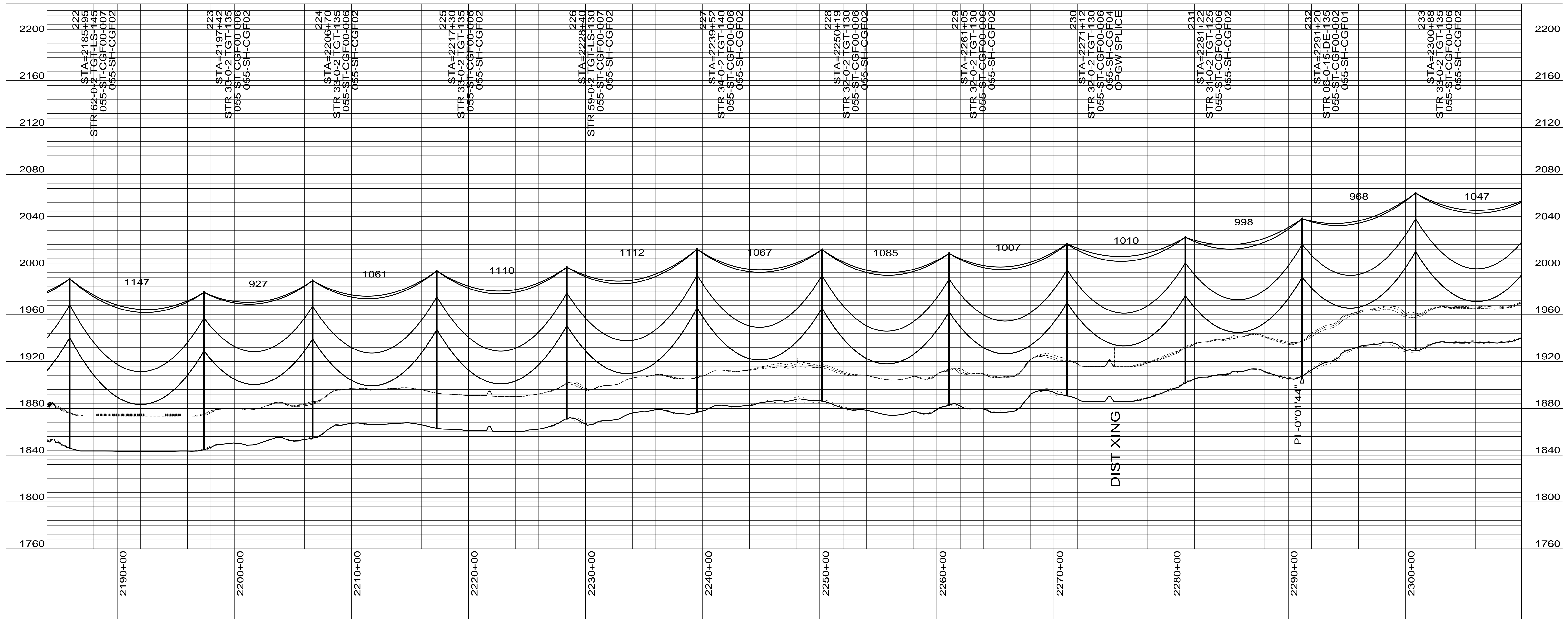
Center to Grand Forks Project

Minnkota Power
 COOPERATIVE, INC.

MCLEAN COUNTY

400.0 FT. HORIZ. SCALE
 40.0 FT. VERT. SCALE

DRAWING	REV
055-PP-ML211-010	1



CONDUCTOR: 959.6 KCMIL SUWANNEE ACSR/TW DISPLAYED @ EXTREME ICE, NO WIND; CLEARANCE: 30 FT
 OPGW: 49F69S - 24 STRAND, DISPLAYED @ -30 DEGREES F
 SHIELD WIRE: 1/2" EHS STEEL, DISPLAYED @ -30 DEGREES F

REV	DATE	APP	DESCRIPTION	DFTR
1	10/01/14	KJH	RECORD DRAWING	BEC
0	02/15/13	HWD	ISSUED FOR CONSTRUCTION	LRK



Stanley Consultants INC.

8000 S. CHESTER STREET
 SUITE 500
 CENTENNIAL, CO 80112

A STANLEY GROUP COMPANY
 ENGINEERING, ENVIRONMENTAL AND
 CONSTRUCTION SERVICES - WORLDWIDE

DESIGNED L.R.KETTER
 DRAWN B.E.CAMPBELL
 CHECKED H.W.DILLABOUGH
 APPROVED K.J.HARROLD
 APPROVED
 DATE 02/11/2013

Center to Grand Forks Project



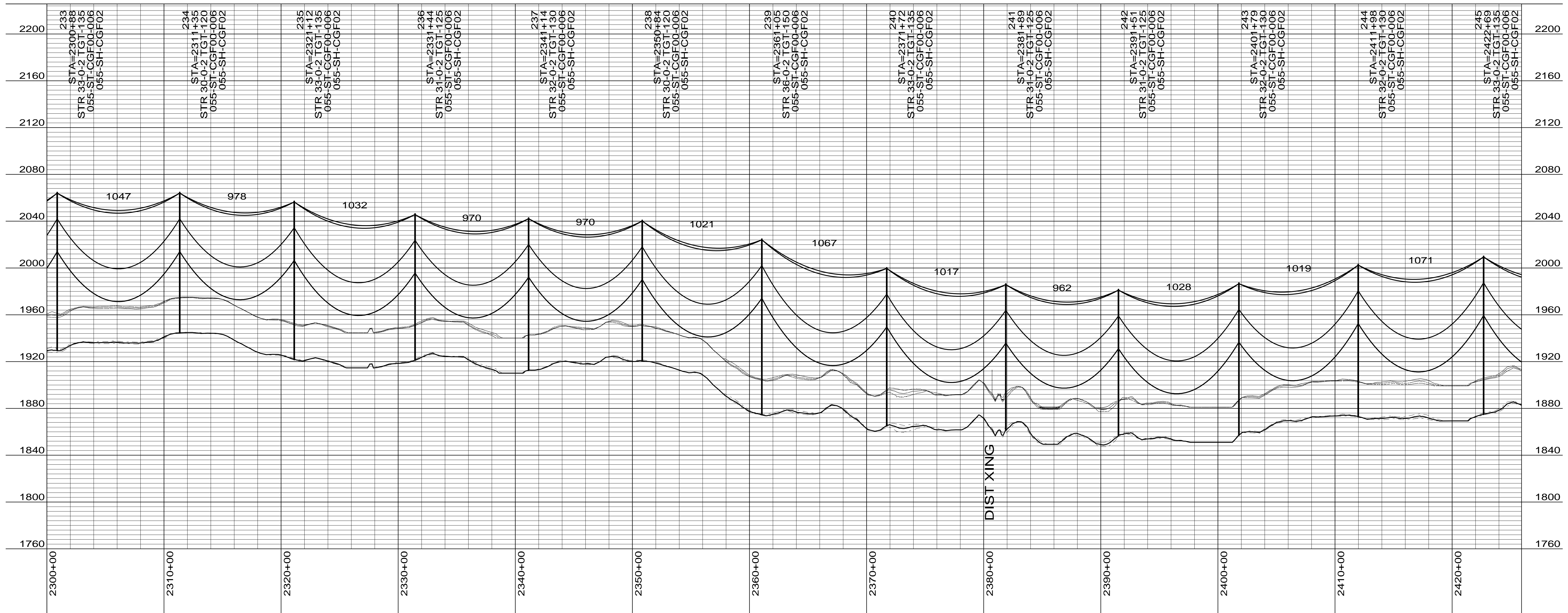
Minnkota Power
 COOPERATIVE, INC.

MCLEAN COUNTY

400.0 FT. HORIZ. SCALE
 40.0 FT. VERT. SCALE

DRAWING
 055-PP-ML222-011

REV
 1



CONDUCTOR: 959.6 KCMIL SUWANNEE ACSR/TW DISPLAYED @ EXTREME ICE, NO WIND; CLEARANCE: 30 FT
 OPGW: 49F69S - 24 STRAND, DISPLAYED @ -30 DEGREES F
 SHIELD WIRE: 1/2" EHS STEEL, DISPLAYED @ -30 DEGREES F

REV	DATE	APP	DESCRIPTION	DFTR
1	10/01/14	KJH	RECORD DRAWING	BEC
0	02/15/13	HWD	ISSUED FOR CONSTRUCTION	LRK

Stanley Consultants Inc.

8000 S. CHESTER STREET
 SUITE 500
 CENTENNIAL, CO 80112

A STANLEY GROUP COMPANY
 ENGINEERING, ENVIRONMENTAL AND
 CONSTRUCTION SERVICES - WORLDWIDE

DESIGNED L.R.KETTER
 DRAWN B.E.CAMPBELL
 CHECKED H.W.DILLABOUGH
 APPROVED K.J.HARROLD
 APPROVED
 DATE 02/11/2013

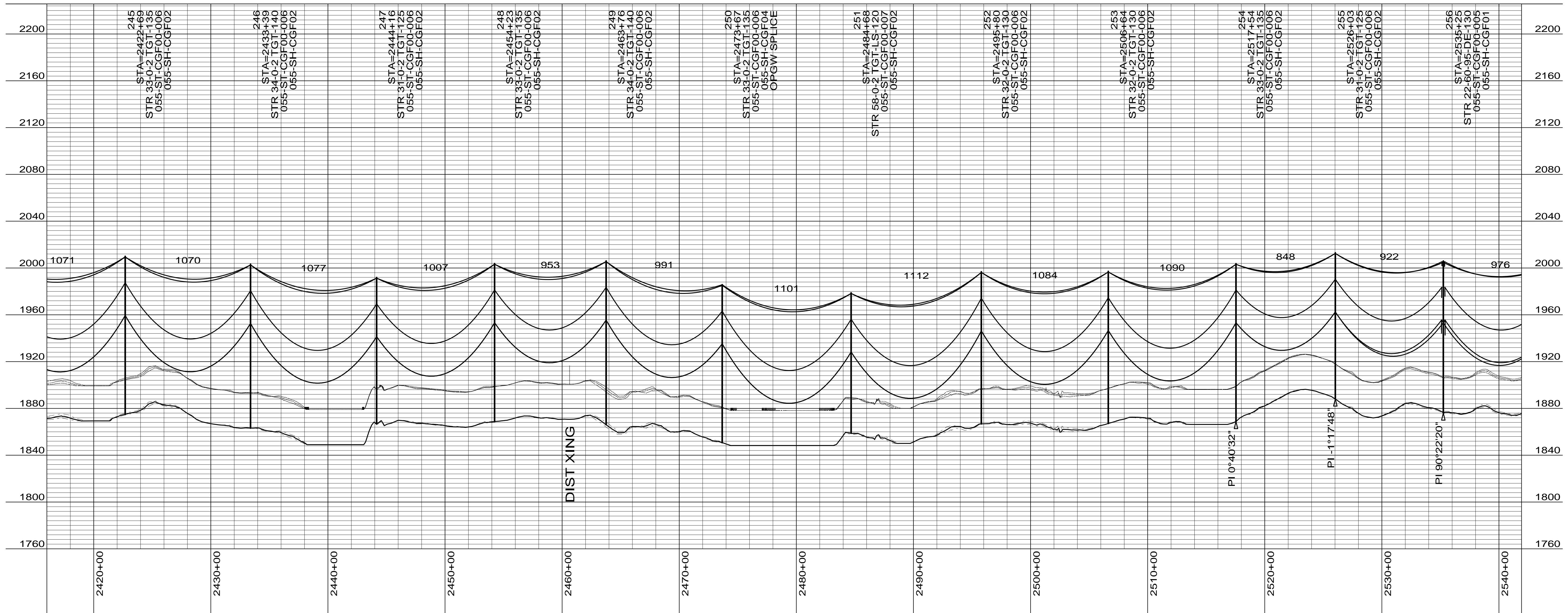
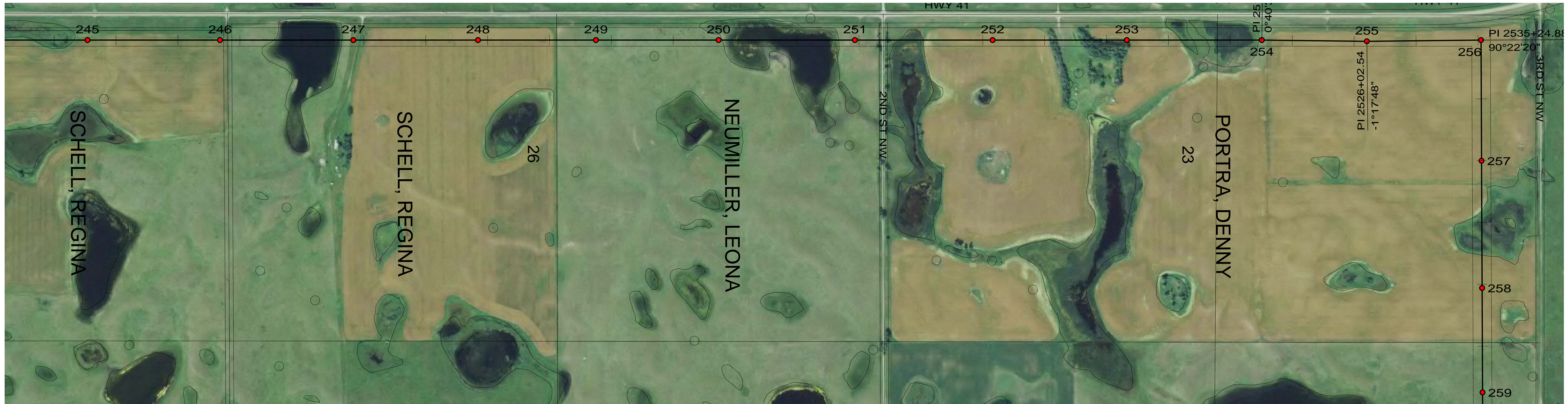
Center to Grand Forks Project

Minnkota Power
 COOPERATIVE, INC.

MCLEAN COUNTY

400.0 FT. HORIZ. SCALE
 40.0 FT. VERT. SCALE

DRAWING	REV
055-PP-ML233-012	1



CONDUCTOR: 959.6 KCMIL SUWANNEE ACSR/TW DISPLAYED @ EXTREME ICE, NO WIND; CLEARANCE: 30 FT
 OPGW: 49F69S - 24 STRAND, DISPLAYED @ -30 DEGREES F
 SHIELD WIRE: 1/2" EHS STEEL, DISPLAYED @ -30 DEGREES F

REV	DATE	APP	DESCRIPTION	DFTR
2	10/01/14	KJH	RECORD DRAWING	BEC
1	12/09/13	MFJ	MOVED STRUCTURE 247 10' SOUTH, STRUCTURE 255 10' EAST	KJH
0	02/15/13	HWD	ISSUED FOR CONSTRUCTION	LRK



Stanley Consultants INC.
 8000 S. CHESTER STREET
 SUITE 500
 CENTENNIAL, CO 80112

A STANLEY GROUP COMPANY
 ENGINEERING, ENVIRONMENTAL AND
 CONSTRUCTION SERVICES - WORLDWIDE

DESIGNED L.R.KETTER
 DRAWN B.E.CAMPBELL
 CHECKED H.W.DILLABOUGH
 APPROVED K.J.HARROLD
 APPROVED
 DATE 02/11/2013

Center to Grand Forks Project



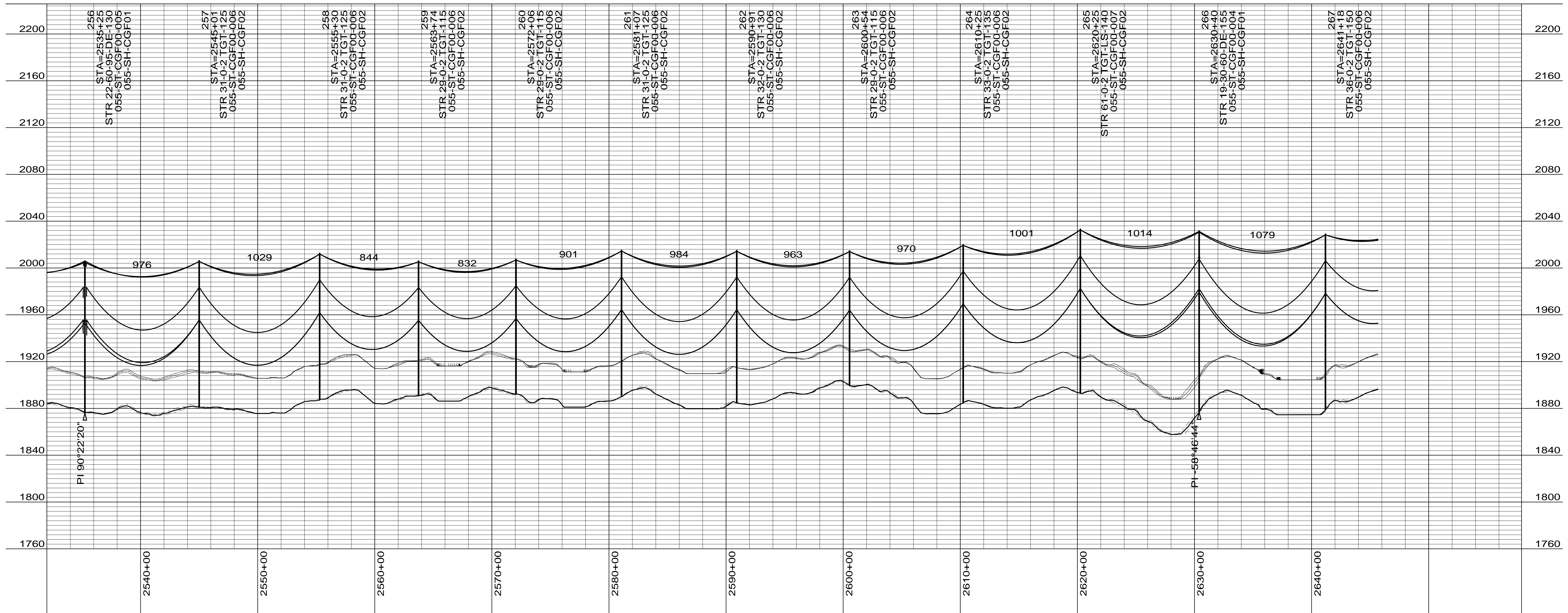
Minnkota Power
 COOPERATIVE, INC.

MCLEAN COUNTY

400.0 FT. HORIZ. SCALE
 40.0 FT. VERT. SCALE

DRAWING
055-PP-ML245-013

REV
2



CONDUCTOR: 959.6 KCMIL SUWANNEE ACSR/TW DISPLAYED @ EXTREME ICE, NO WIND; CLEARANCE: 30 FT
 OPGW: 49F69S - 24 STRAND, DISPLAYED @ -30 DEGREES F
 SHIELD WIRE: 1/2" EHS STEEL, DISPLAYED @ -30 DEGREES F

REV	DATE	APP	DESCRIPTION	DFTR
2	10/01/14	KJH	RECORD DRAWING	BEC
1	12/09/13	MFJ	MOVED STRUCTURE 255 10' EAST, STRUCTURE 261 100' WEST	KJH
0	02/15/13	HWD	ISSUED FOR CONSTRUCTION	LRK

Stanley Consultants Inc.

8000 S. CHESTER STREET
 SUITE 500
 CENTENNIAL, CO 80112

A STANLEY GROUP COMPANY
 ENGINEERING, ENVIRONMENTAL AND
 CONSTRUCTION SERVICES - WORLDWIDE

DESIGNED L.R.KETTER
 DRAWN B.E.CAMPBELL
 CHECKED H.W.DILLABOUGH
 APPROVED K.J.HARROLD
 APPROVED _____
 DATE 02/11/2013

Center to Grand Forks Project

Minnkota Power
 COOPERATIVE, INC.

MCLEAN COUNTY

400.0 FT. HORIZ. SCALE
 40.0 FT. VERT. SCALE

DRAWING	REV
055-PP-ML256-014	2