

CONDUCTOR: 959.6 KCMIL SUWANNEE ACSR/TW DISPLAYED @ EXTREME ICE, NO WIND; CLEARANCE: 30 FT
 OPGW: 49F69S - 24 STRAND, DISPLAYED @ -30 DEGREES F
 SHIELD WIRE: 1/2" EHS STEEL, DISPLAYED @ -30 DEGREES F

REV	DATE	APP	DESCRIPTION	DFTR
2	10/01/14	KJH	RECORD DRAWING	BEC
1	04/05/13	HWD	ADDED STR & FR DRAWING #'S, OPGW SPLICE LOCATIONS	LRK
0	04/27/12	MFJ	ISSUED FOR CONSTRUCTION	LRK

Stanley Consultants Inc.

8000 S. CHESTER STREET
 SUITE 500
 CENTENNIAL, CO 80112

A STANLEY GROUP COMPANY
 ENGINEERING, ENVIRONMENTAL AND
 CONSTRUCTION SERVICES - WORLDWIDE

DESIGNED L.R.KETTER
 DRAWN B.E.CAMPBELL
 CHECKED H.W.DILLABOUGH
 APPROVED K.J.HARROLD
 APPROVED
 DATE 04/26/2012

Center to Grand Forks Project

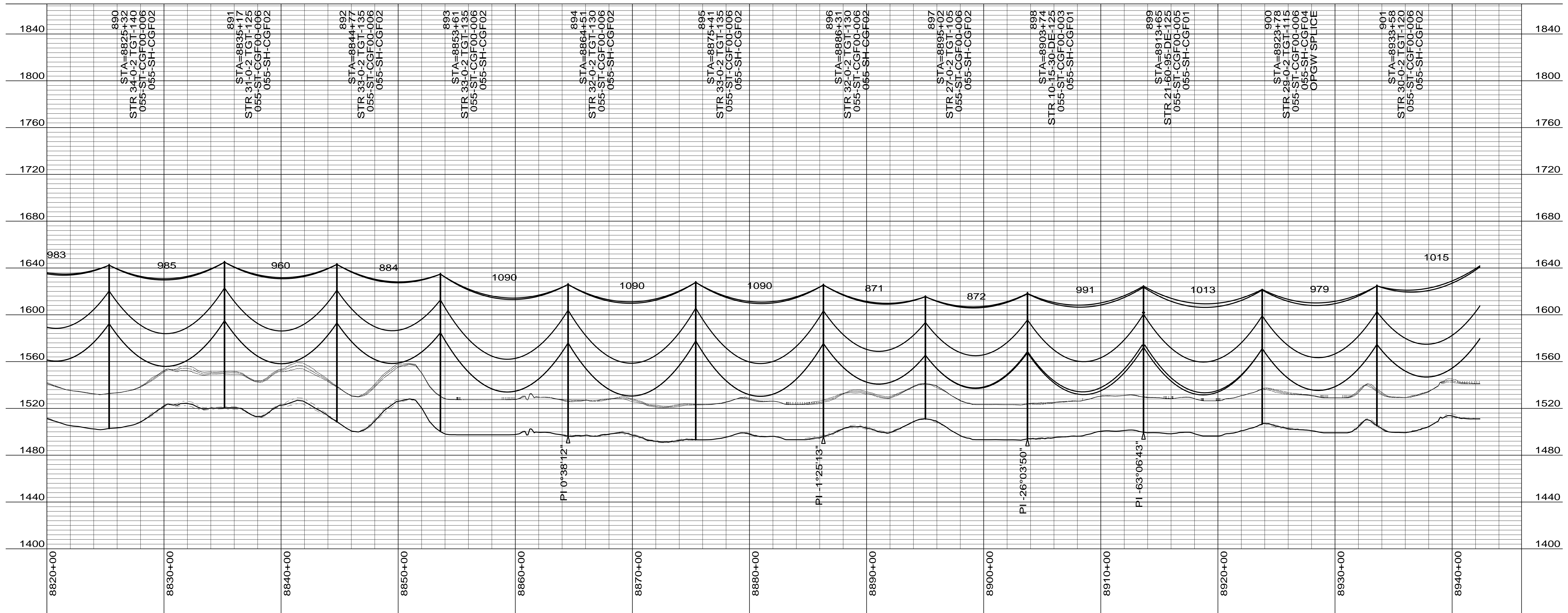
Minnkota Power
 COOPERATIVE, INC.

GRIGGS COUNTY

400.0 FT. HORIZ. SCALE
 40.0 FT. VERT. SCALE

DRAWING
055-PP-GR878-001

REV
2



CONDUCTOR: 959.6 KCMIL SUWANNEE ACSR/TW DISPLAYED @ EXTREME ICE, NO WIND; CLEARANCE: 30 FT
 OPGW: 49F69S - 24 STRAND, DISPLAYED @ -30 DEGREES F
 SHIELD WIRE: 1/2" EHS STEEL, DISPLAYED @ -30 DEGREES F

REV	DATE	APP	DESCRIPTION	DFTR
2	10/01/14	KJH	RECORD DRAWING	BEC
1	04/05/13	HWD	ADDED STR & FR DRAWING # S, OPGW SPLICE LOCATIONS	LRK
0	04/27/12	MFJ	ISSUED FOR CONSTRUCTION	LRK

8000 S. CHESTER STREET
 SUITE 500
 CENTENNIAL, CO 80112

A STANLEY GROUP COMPANY
 ENGINEERING, ENVIRONMENTAL AND
 CONSTRUCTION SERVICES - WORLDWIDE

DESIGNED L.R.KETTER
 DRAWN B.E.CAMPBELL
 CHECKED H.W.DILLABOUGH
 APPROVED K.J.HARROLD
 DATE 04/26/2012

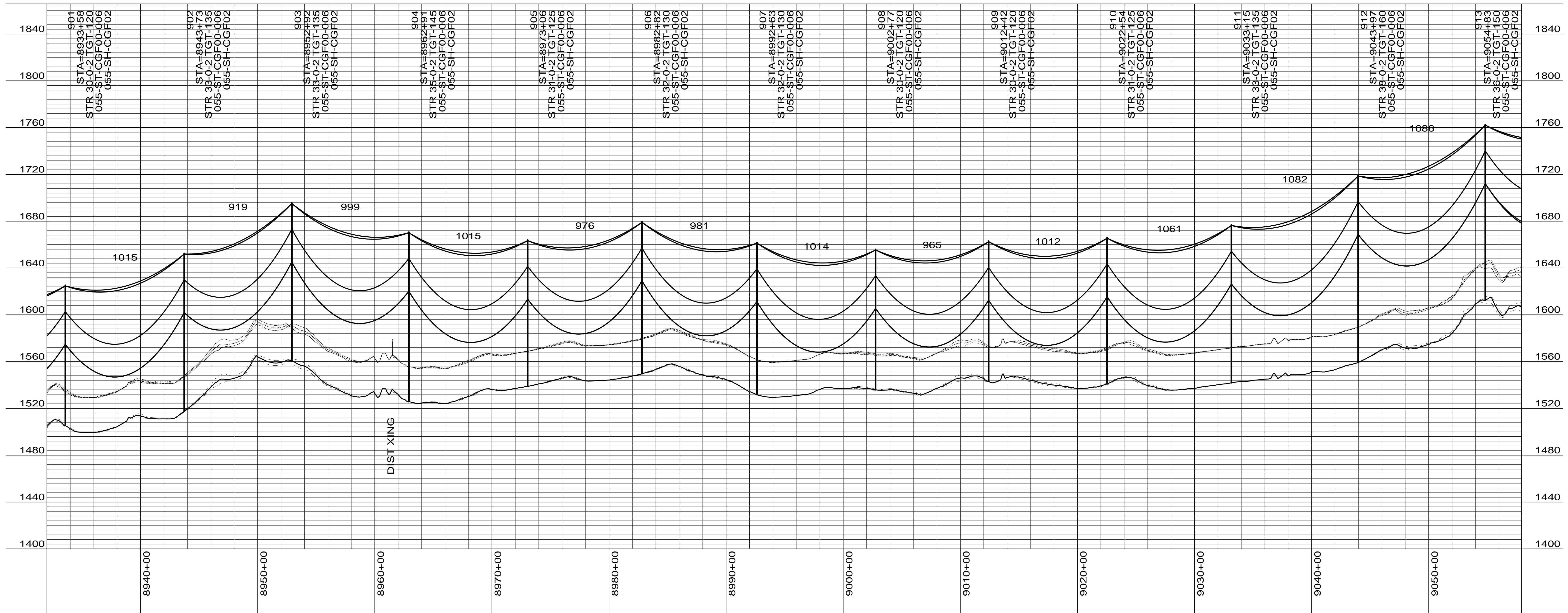
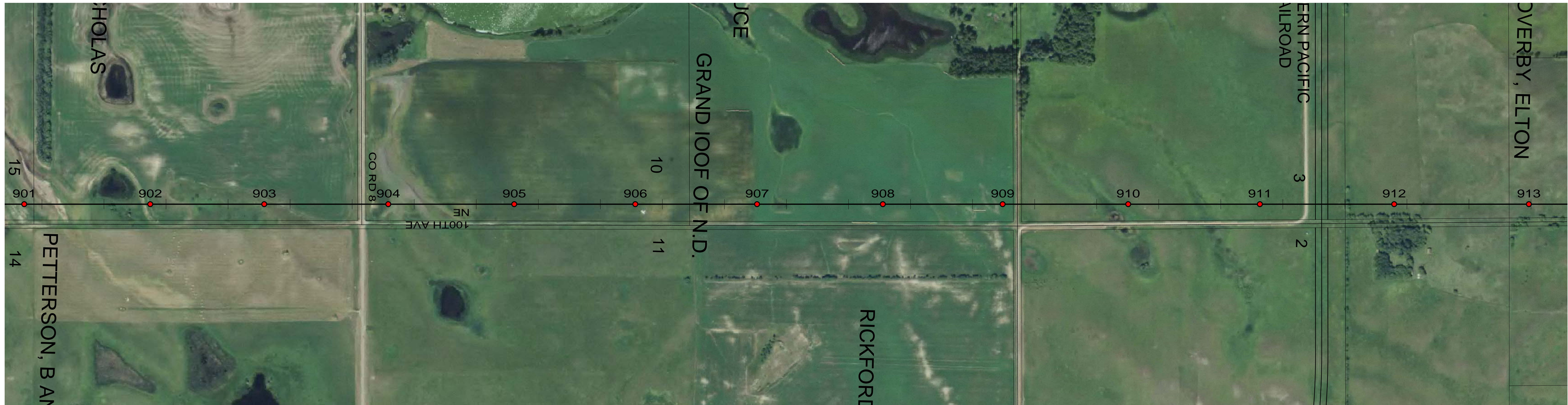
Center to Grand Forks Project

COOPERATIVE, INC.

GRIGGS COUNTY

400.0 FT. HORIZ. SCALE
 40.0 FT. VERT. SCALE

DRAWING 055-PP-GR890-002
 REV 2



CONDUCTOR: 959.6 KCMIL SUWANNEE ACSR/TW DISPLAYED @ EXTREME ICE, NO WIND; CLEARANCE: 30 FT
 OPGW: 49F69S - 24 STRAND, DISPLAYED @ -30 DEGREES F
 SHIELD WIRE: 1/2" EHS STEEL, DISPLAYED @ -30 DEGREES F

REV	DATE	APP	DESCRIPTION	DFTR
2	10/01/14	KJH	RECORD DRAWING	BEC
1	04/05/13	HWD	ADDED STR & FR DRAWING # S, OPGW SPLICE LOCATIONS	LRK
0	04/27/12	MFJ	ISSUED FOR CONSTRUCTION	LRK

Stanley Consultants INC.

8000 S. CHESTER STREET
 SUITE 500
 CENTENNIAL, CO 80112

A STANLEY GROUP COMPANY
 ENGINEERING, ENVIRONMENTAL AND
 CONSTRUCTION SERVICES - WORLDWIDE

DESIGNED L.R.KETTER
 DRAWN B.E.CAMPBELL
 CHECKED H.W.DILLABOUGH
 APPROVED K.J.HARROLD
 APPROVED
 DATE 04/26/2012

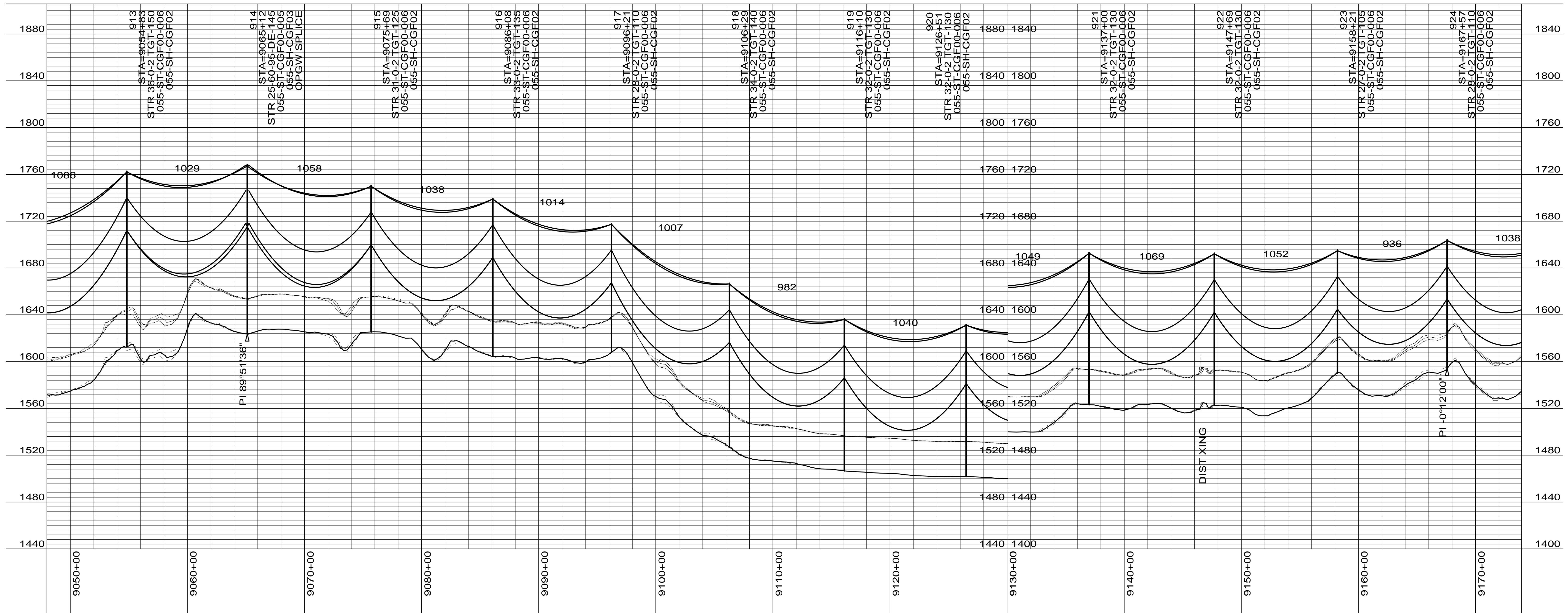
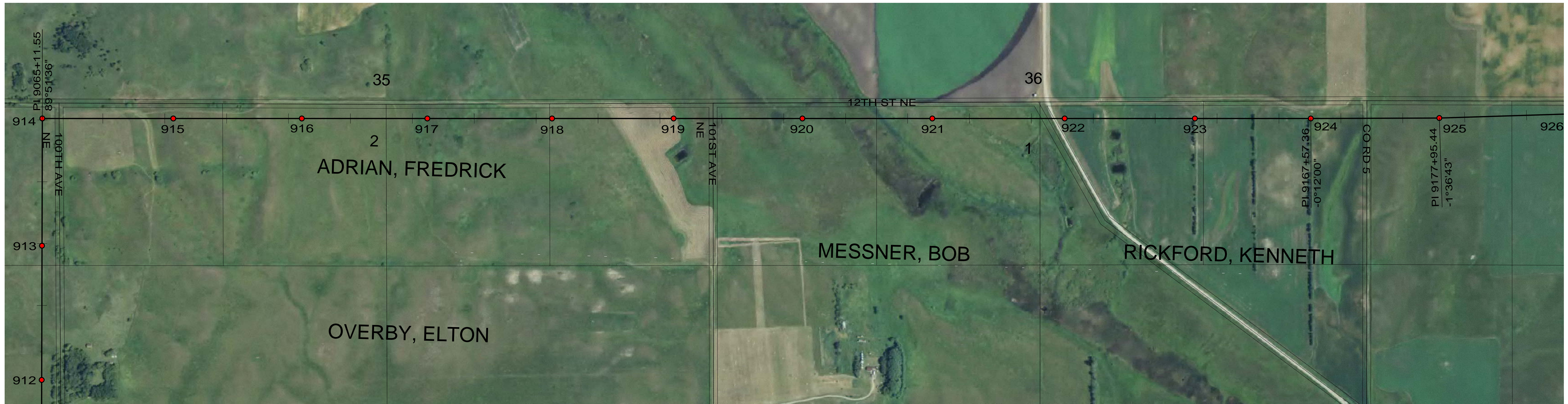
Center to Grand Forks Project

Minnkota Power
 COOPERATIVE, INC.

GRIGGS COUNTY

400.0 FT. HORIZ. SCALE
 40.0 FT. VERT. SCALE

DRAWING	REV
055-PP-GR901-003	2



CONDUCTOR: 959.6 KCMIL SUWANNEE ACSR/TW DISPLAYED @ EXTREME ICE, NO WIND; CLEARANCE: 30 FT
 OPGW: 49F69S - 24 STRAND, DISPLAYED @ -30 DEGREES F
 SHIELD WIRE: 1/2" EHS STEEL, DISPLAYED @ -30 DEGREES F

REV	DATE	APP	DESCRIPTION	DFTR
2	10/01/14	KJH	RECORD DRAWING	BEC
1	04/05/13	HWD	ADDED STR & FR DRAWING # S, OPGW SPLICE LOCATIONS	LRK
0	04/27/12	MFJ	ISSUED FOR CONSTRUCTION	LRK

8000 S. CHESTER STREET
 SUITE 500
 CENTENNIAL, CO 80112

A STANLEY GROUP COMPANY
 ENGINEERING, ENVIRONMENTAL AND
 CONSTRUCTION SERVICES - WORLDWIDE

DESIGNED L.R.KETTER
 DRAWN B.E.CAMPBELL
 CHECKED H.W.DILLABOUGH
 APPROVED K.J.HARROLD
 APPROVED DATE 04/26/2012

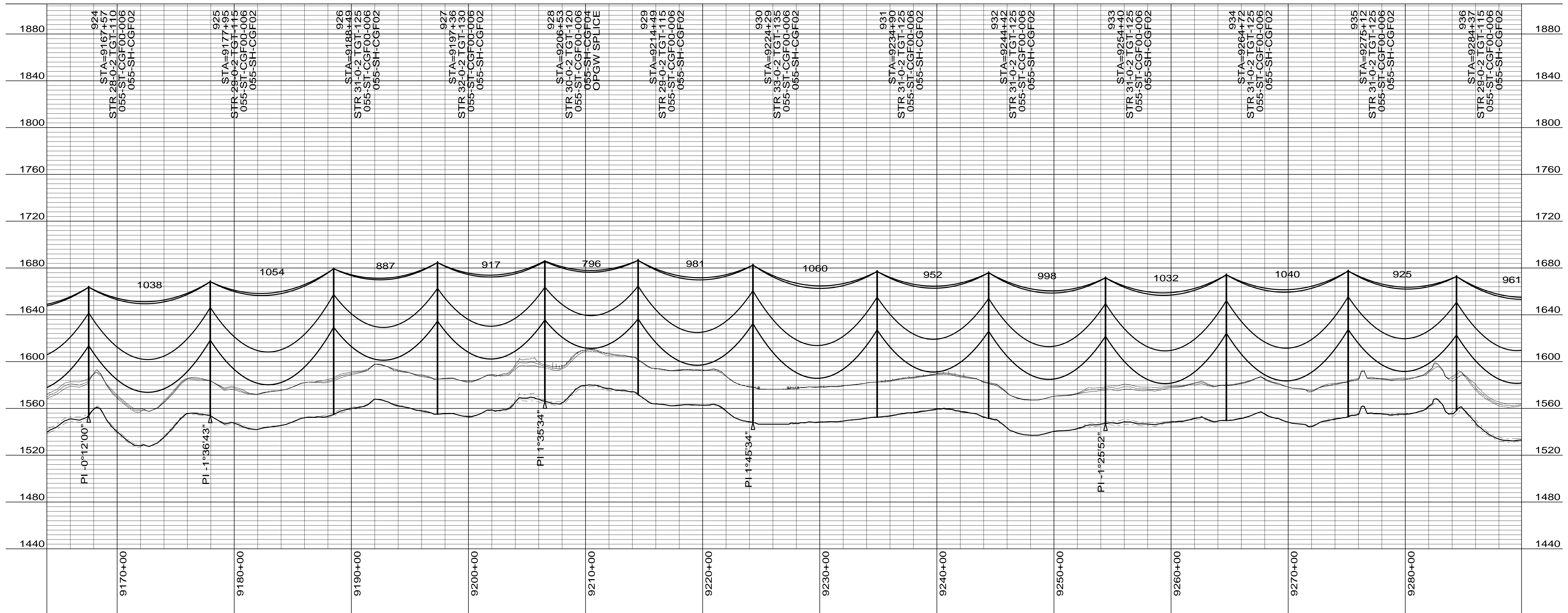
Center to Grand Forks Project

COOPERATIVE, INC.

GRIGGS COUNTY

400.0 FT. HORIZ. SCALE
 40.0 FT. VERT. SCALE

DRAWING REV
 055-PP-GR913-004 2



CONDUCTOR: 959.6 KCMIL SUWANNEE ACSR/TW DISPLAYED @ EXTREME ICE, NO WIND; CLEARANCE: 30 FT
 OPGW: 49F69S - 24 STRAND, DISPLAYED @ -30 DEGREES F
 SHIELD WIRE: 1/2" EHS STEEL, DISPLAYED @ -30 DEGREES F

REV	DATE	APP	DESCRIPTION	DFTR
2	10/01/14	KJH	RECORD DRAWING	BEC
1	04/05/13	HWD	ADDED STR & FR DRAWING # S, OPGW SPLICE LOCATIONS	LRK
0	04/27/12	MFJ	ISSUED FOR CONSTRUCTION	LRK

Stanley Consultants INC.

8000 S. CHESTER STREET
 SUITE 500
 CENTENNIAL, CO 80112

A STANLEY GROUP COMPANY
 ENGINEERING, ENVIRONMENTAL AND
 CONSTRUCTION SERVICES - WORLDWIDE

DESIGNED L.R.KETTER
 DRAWN B.E.CAMPBELL
 CHECKED H.W.DILLABOUGH
 APPROVED K.J.HARROLD
 DATE 04/26/2012

Center to Grand Forks Project

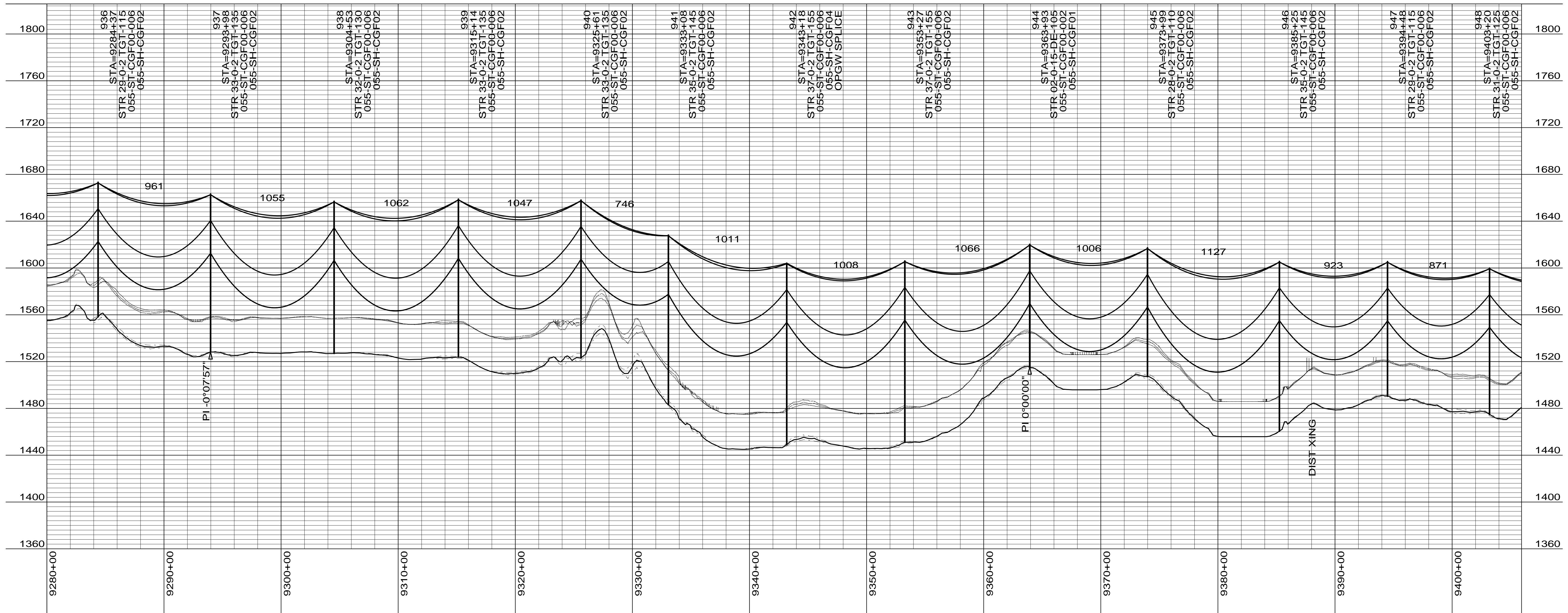
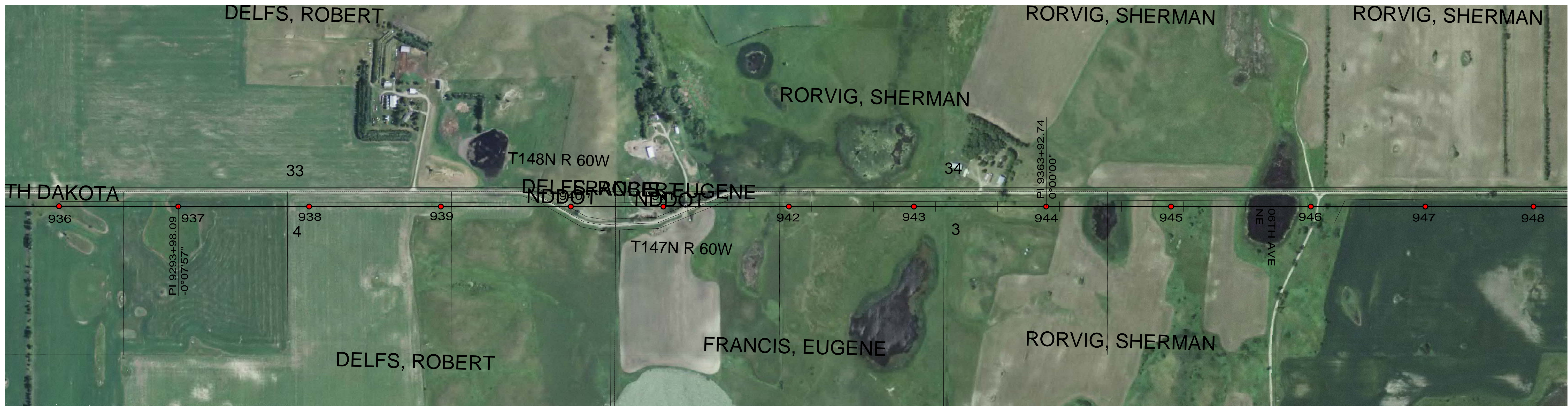
Minnkota Power
 COOPERATIVE, INC.

GRIGGS COUNTY

400.0 FT. HORIZ. SCALE
 40.0 FT. VERT. SCALE

DRAWING
055-PP-GR924-005

REV
2



CONDUCTOR: 959.6 KCMIL SUWANNEE ACSR/TW DISPLAYED @ EXTREME ICE, NO WIND; CLEARANCE: 30 FT
 OPGW: 49F69S - 24 STRAND, DISPLAYED @ -30 DEGREES F
 SHIELD WIRE: 1/2" EHS STEEL, DISPLAYED @ -30 DEGREES F

REV	DATE	APP	DESCRIPTION	DFTR
2	10/01/14	KJH	RECORD DRAWING	BEC
1	04/05/13	HWD	ADDED STR & FR DRAWING # S, OPGW SPLICE LOCATIONS	LRK
0	04/27/12	MFJ	ISSUED FOR CONSTRUCTION	LRK



8000 S. CHESTER STREET
 SUITE 500
 CENTENNIAL, CO 80112

A STANLEY GROUP COMPANY
 ENGINEERING, ENVIRONMENTAL AND
 CONSTRUCTION SERVICES - WORLDWIDE

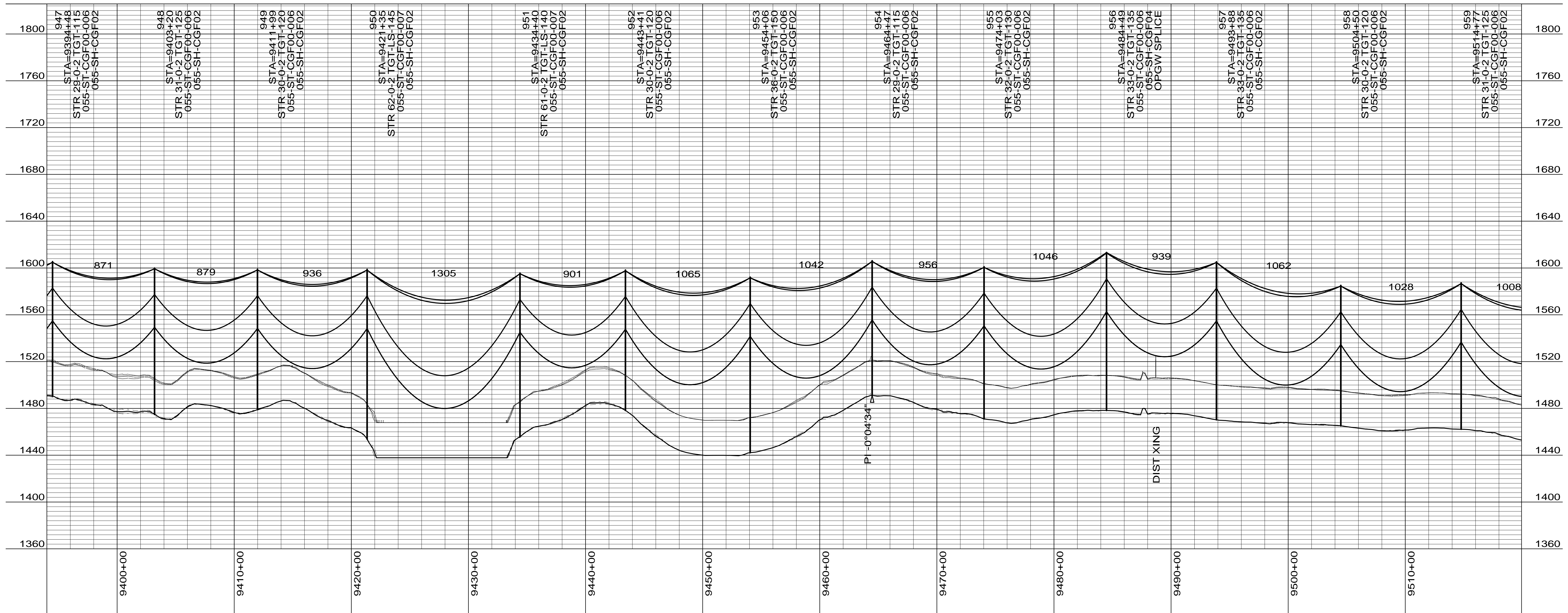
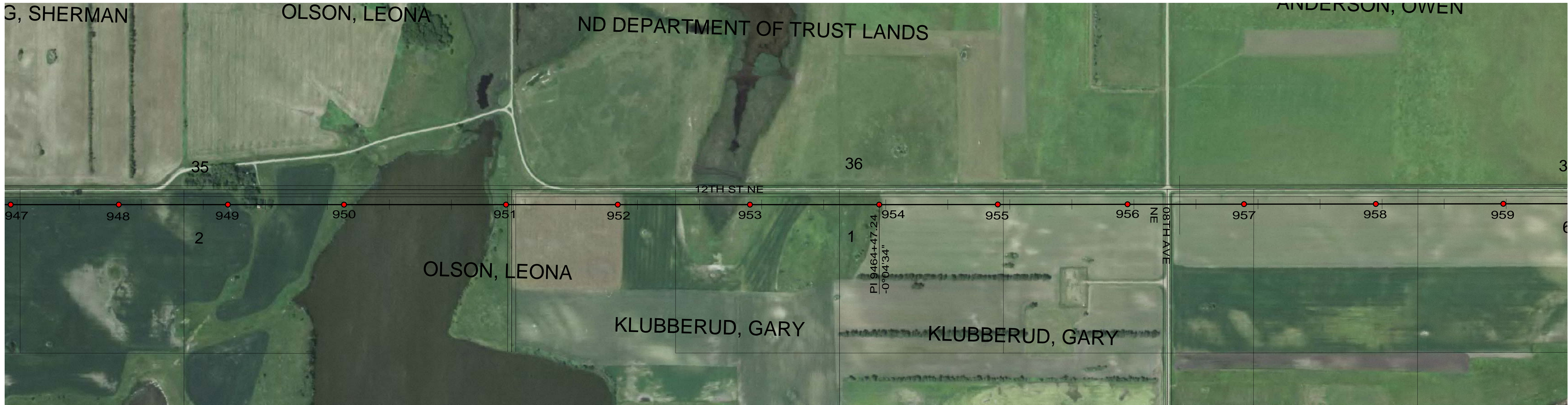
DESIGNED L.R.KETTER
 DRAWN B.E.CAMPBELL
 CHECKED H.W.DILLABOUGH
 APPROVED K.J.HARROLD
 APPROVED
 DATE 04/26/2012



GRIGGS COUNTY

400.0 FT. HORIZ. SCALE
 40.0 FT. VERT. SCALE

DRAWING	REV
055-PP-GR936-006	2



CONDUCTOR: 959.6 KCMIL SUWANNEE ACSR/TW DISPLAYED @ EXTREME ICE, NO WIND; CLEARANCE: 30 FT
 OPGW: 49F69S - 24 STRAND, DISPLAYED @ -30 DEGREES F
 SHIELD WIRE: 1/2" EHS STEEL, DISPLAYED @ -30 DEGREES F

REV	DATE	APP	DESCRIPTION	DFTR
2	10/01/14	KJH	RECORD DRAWING	BEC
1	4/05/13	HWD	ADDED STR & FR DRAWING # S, OPGW SPLICE LOCATIONS	LRK
0	04/27/12	MFJ	ISSUED FOR CONSTRUCTION	LRK

8000 S. CHESTER STREET
 SUITE 500
 CENTENNIAL, CO 80112

A STANLEY GROUP COMPANY
 ENGINEERING, ENVIRONMENTAL AND
 CONSTRUCTION SERVICES - WORLDWIDE

DESIGNED L.R.KETTER
 DRAWN B.E.CAMPBELL
 CHECKED H.W.DILLABOUGH
 APPROVED K.J.HARROLD
 DATE 04/26/2012

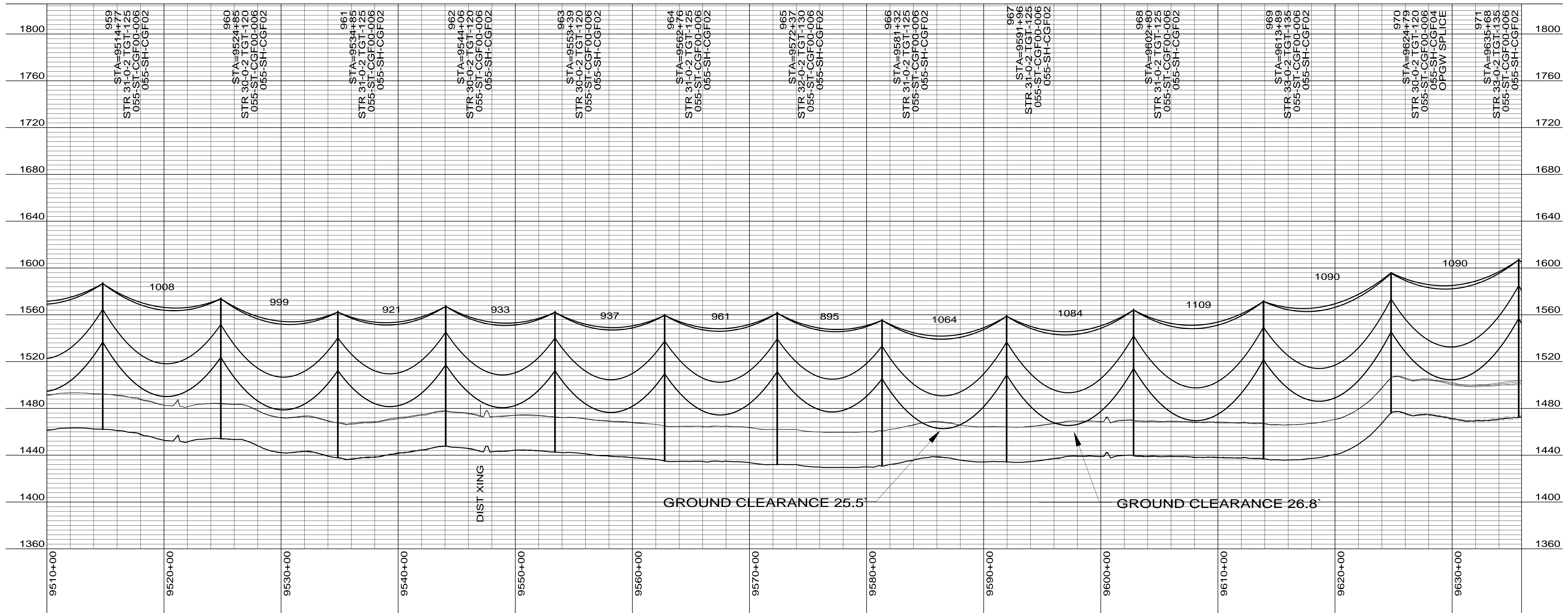
Center to Grand Forks Project

COOPERATIVE, INC.

GRIGGS COUNTY

400.0 FT. HORIZ. SCALE
 40.0 FT. VERT. SCALE

DRAWING 055-PP-GR947-007
 REV 2



CONDUCTOR: 959.6 KCMIL SUWANNEE ACSR/TW DISPLAYED @ EXTREME ICE, NO WIND; CLEARANCE: 30 FT
 OPGW: 49F69S - 24 STRAND, DISPLAYED @ -30 DEGREES F
 SHIELD WIRE: 1/2" EHS STEEL, DISPLAYED @ -30 DEGREES F

REV	DATE	APP	DESCRIPTION	DFTR
3	10/01/14	KJH	RECORD DRAWING	BEC
2	04/05/13	HWD	ADDED STR & FR DRAWING # S, OPGW SPLICE LOCATIONS	LRK
1	10/01/12	MFJ	STRUCTURE CHANGE 966 AND 967	HWD



8000 S. CHESTER STREET
 SUITE 500
 CENTENNIAL, CO 80112
 A STANLEY GROUP COMPANY
 ENGINEERING, ENVIRONMENTAL AND
 CONSTRUCTION SERVICES - WORLDWIDE

DESIGNED L.R.KETTER
 DRAWN B.E.CAMPBELL
 CHECKED H.W.DILLABOUGH
 APPROVED K.J.HARROLD
 DATE 04/26/2012

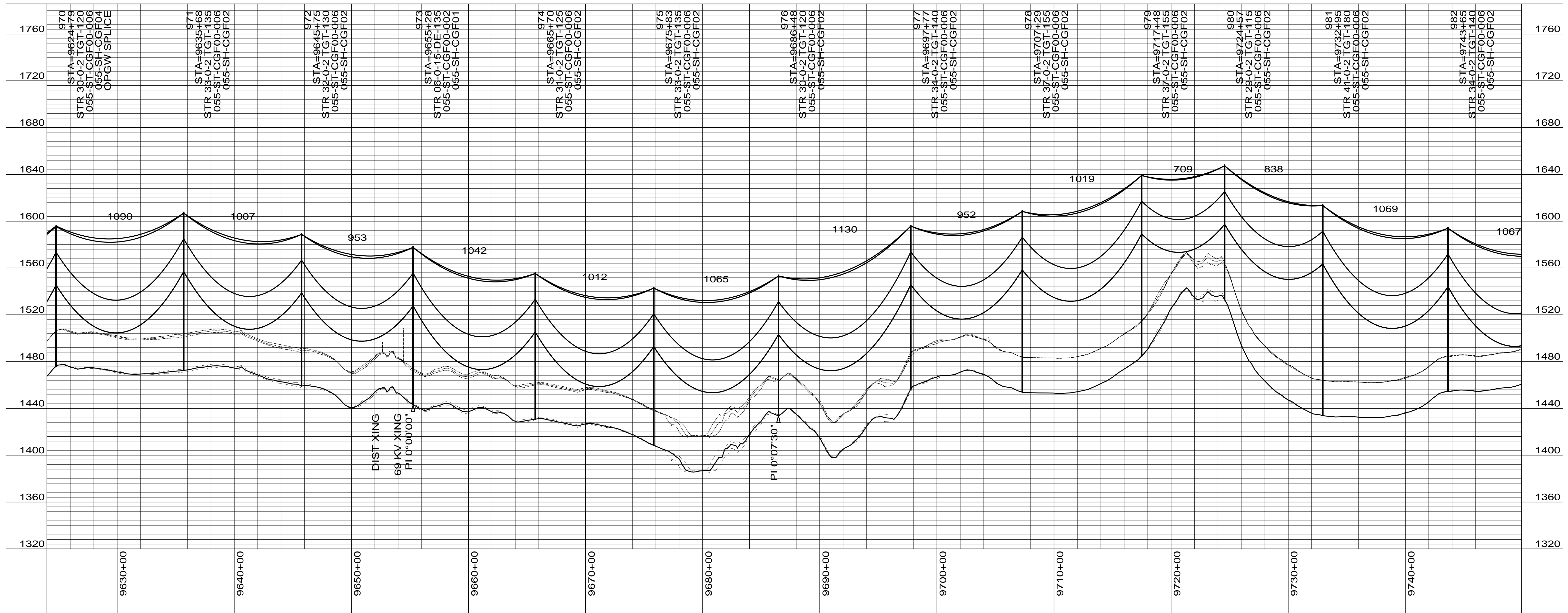
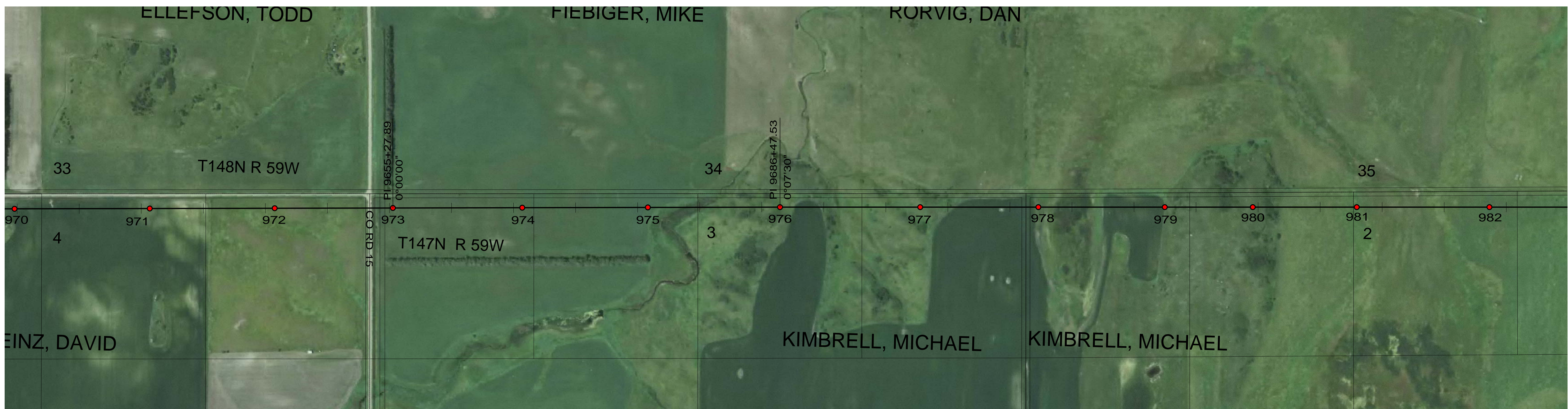


GRIGGS COUNTY

400.0 FT. HORIZ. SCALE
 40.0 FT. VERT. SCALE

DRAWING
 055-PP-GR959-008

REV
 3



CONDUCTOR: 959.6 KCMIL SUWANNEE ACSR/TW DISPLAYED @ EXTREME ICE, NO WIND; CLEARANCE: 30 FT
 OPGW: 49F69S - 24 STRAND, DISPLAYED @ -30 DEGREES F
 SHIELD WIRE: 1/2" EHS STEEL, DISPLAYED @ -30 DEGREES F

REV	DATE	APP	DESCRIPTION	DFTR
2	10/01/14	KJH	RECORD DRAWING	BEC
1	04/05/13	HWD	ADDED STR & FR DRAWING # S, OPGW SPLICE LOCATIONS	LRK
0	04/27/12	MFJ	ISSUED FOR CONSTRUCTION	LRK

8000 S. CHESTER STREET
 SUITE 500
 CENTENNIAL, CO 80112

A STANLEY GROUP COMPANY
 ENGINEERING, ENVIRONMENTAL AND
 CONSTRUCTION SERVICES - WORLDWIDE

DESIGNED L.R.KETTER
 DRAWN B.E.CAMPBELL
 CHECKED H.W.DILLABOUGH
 APPROVED K.J.HARROLD
 DATE 04/26/2012

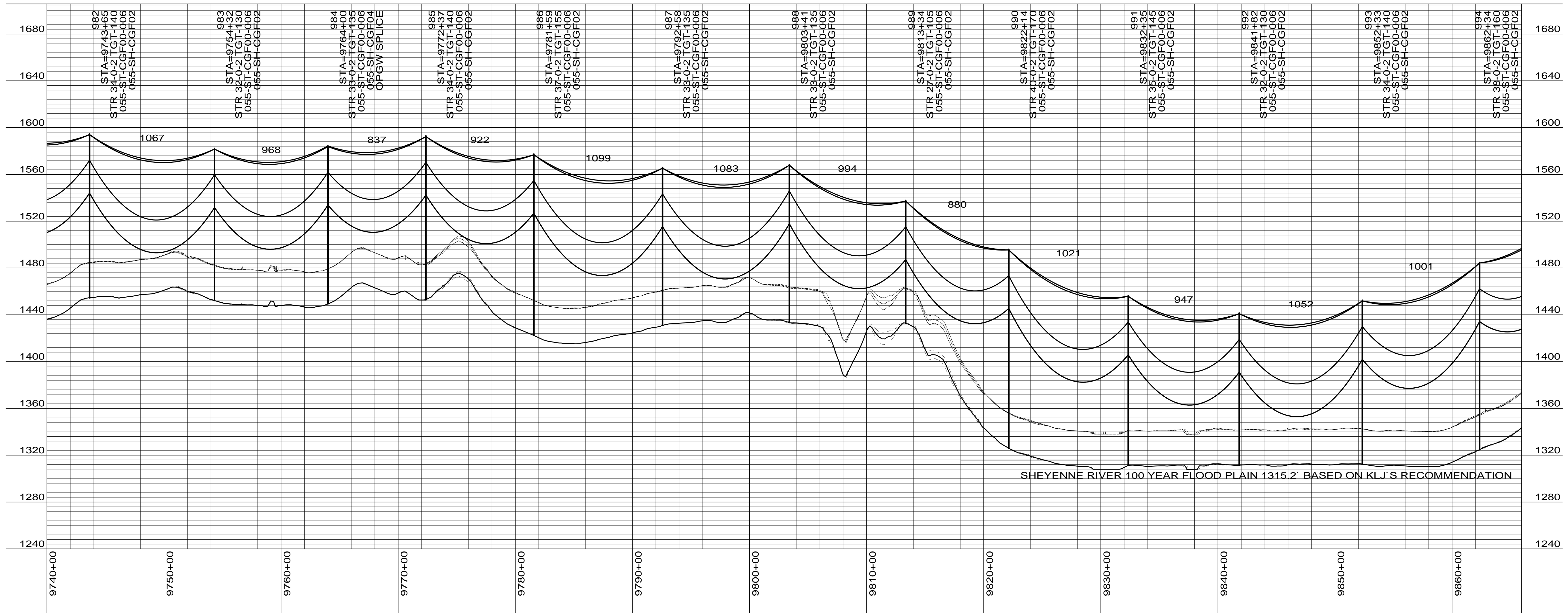
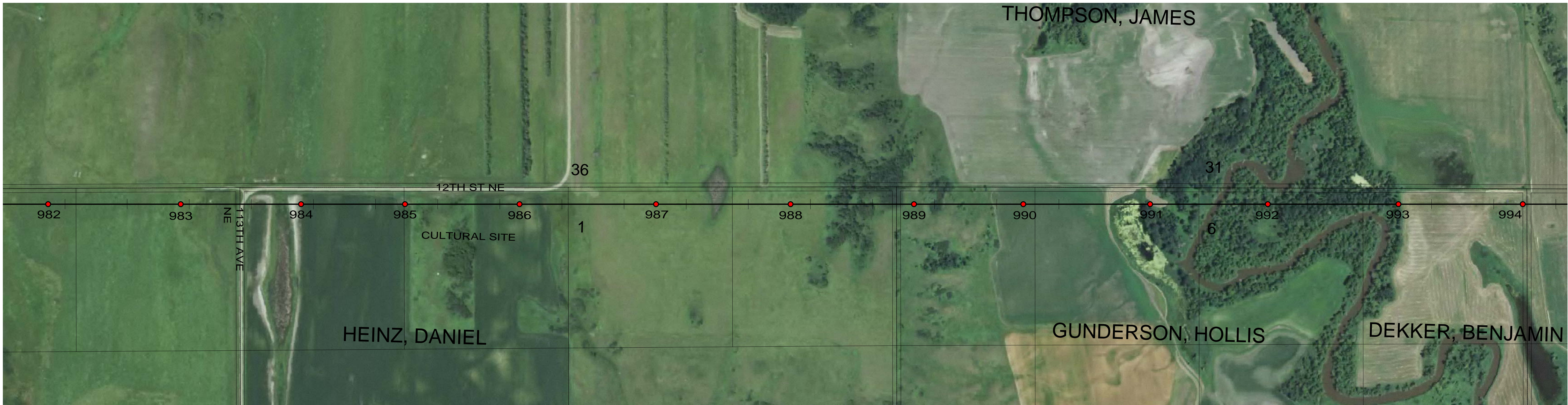
Center to Grand Forks Project

COOPERATIVE, INC.

GRIGGS COUNTY

400.0 FT. HORIZ. SCALE
 40.0 FT. VERT. SCALE

DRAWING 055-PP-GR970-009
 REV 2



CONDUCTOR: 959.6 KCMIL SUWANNEE ACSR/TW DISPLAYED @ EXTREME ICE, NO WIND; CLEARANCE: 30 FT
 OPGW: 49F69S - 24 STRAND, DISPLAYED @ -30 DEGREES F
 SHIELD WIRE: 1/2" EHS STEEL, DISPLAYED @ -30 DEGREES F

REV	DATE	APP	DESCRIPTION	DFTR
2	10/01/14	KJH	RECORD DRAWING	BEC
1	04/05/13	HWD	ADDED STR & FR DRAWING # 'S, OPGW SPLICE LOCATIONS	LRK
0	04/27/12	MFJ	ISSUED FOR CONSTRUCTION	LRK

Stanley Consultants INC.

8000 S. CHESTER STREET
 SUITE 500
 CENTENNIAL, CO 80112

A STANLEY GROUP COMPANY
 ENGINEERING, ENVIRONMENTAL AND
 CONSTRUCTION SERVICES - WORLDWIDE

DESIGNED L.R.KETTER
 DRAWN B.E.CAMPBELL
 CHECKED H.W.DILLABOUGH
 APPROVED K.J.HARROLD
 APPROVED
 DATE 04/26/2012

Center to Grand Forks Project

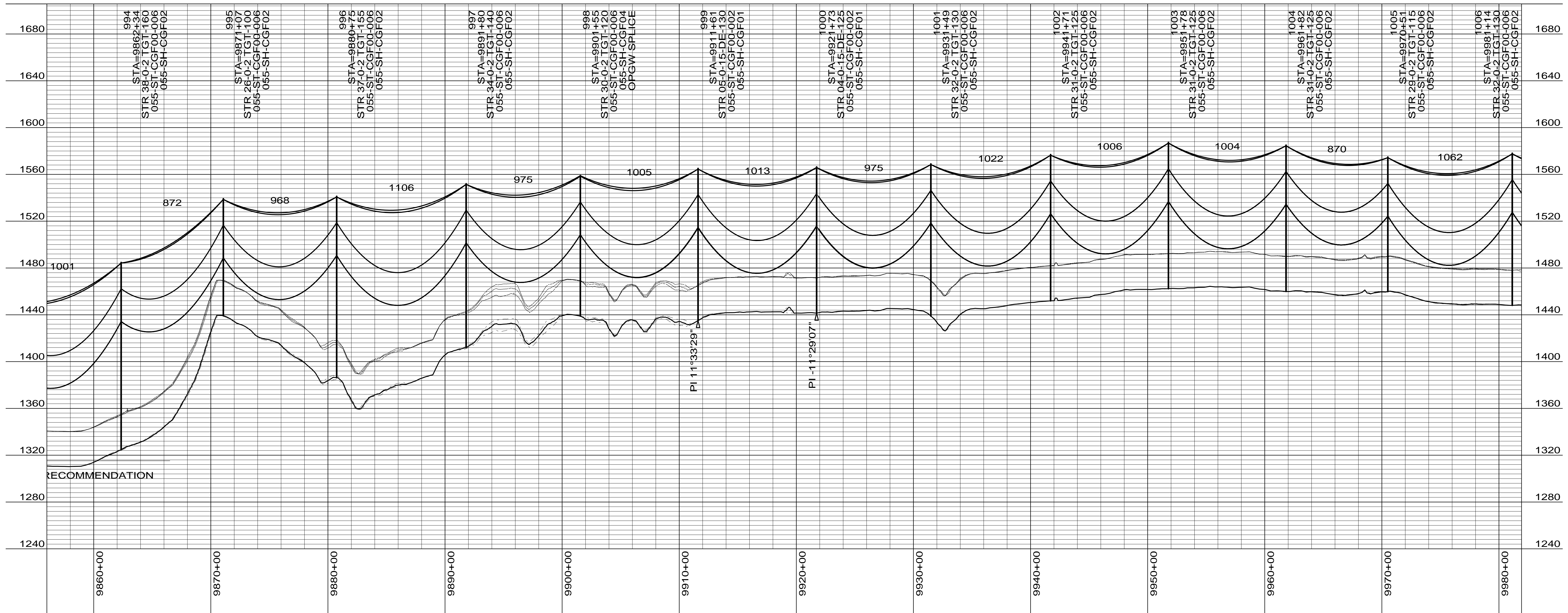
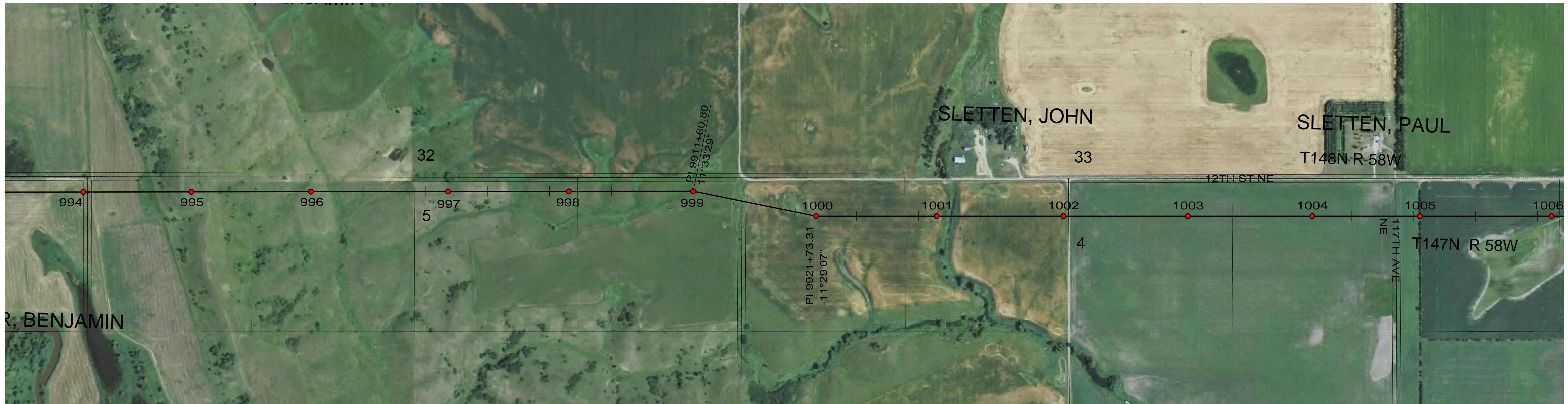
Minnkota Power
 COOPERATIVE, INC.

GRIGGS COUNTY

400.0 FT. HORIZ. SCALE
 40.0 FT. VERT. SCALE

DRAWING
055-PP-GR982-010

REV
2



CONDUCTOR: 959.6 KCMIL SUWANNEE ACSR/TW DISPLAYED @ EXTREME ICE, NO WIND; CLEARANCE: 30 FT
 OPGW: 49F69S - 24 STRAND, DISPLAYED @ -30 DEGREES F
 SHIELD WIRE: 1/2" EHS STEEL, DISPLAYED @ -30 DEGREES F

REV	DATE	APP	DESCRIPTION	DFTR
2	10/01/14	KJH	RECORD DRAWING	BEC
1	04/05/13	HWD	ADDED STR & FR DRAWING # S, OPGW SPLICE LOCATIONS	LRK
0	04/27/12	MFJ	ISSUED FOR CONSTRUCTION	LRK

8000 S. CHESTER STREET
 SUITE 500
 CENTENNIAL, CO 80112

A STANLEY GROUP COMPANY
 ENGINEERING, ENVIRONMENTAL AND
 CONSTRUCTION SERVICES - WORLDWIDE

DESIGNED L.R.KETTER
 DRAWN B.E.CAMPBELL
 CHECKED H.W.DILLABOUGH
 APPROVED K.J.HARROLD
 APPROVED DATE 04/26/2012

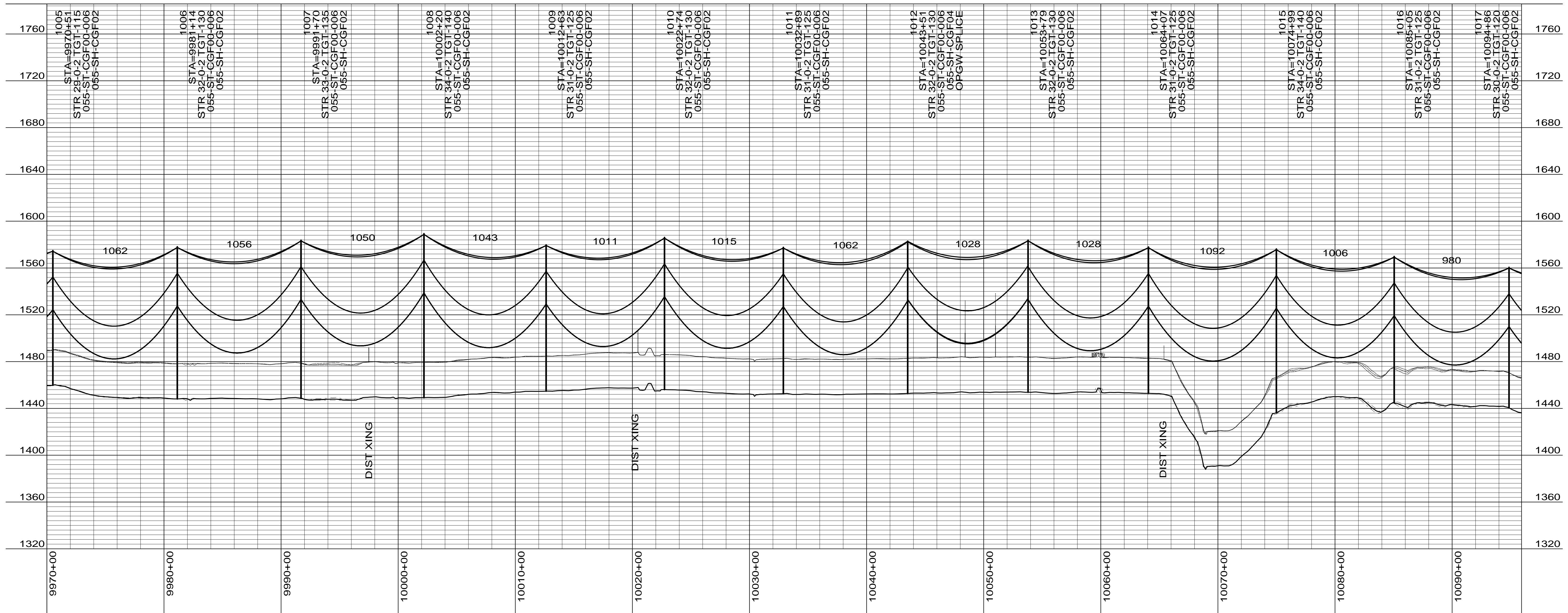
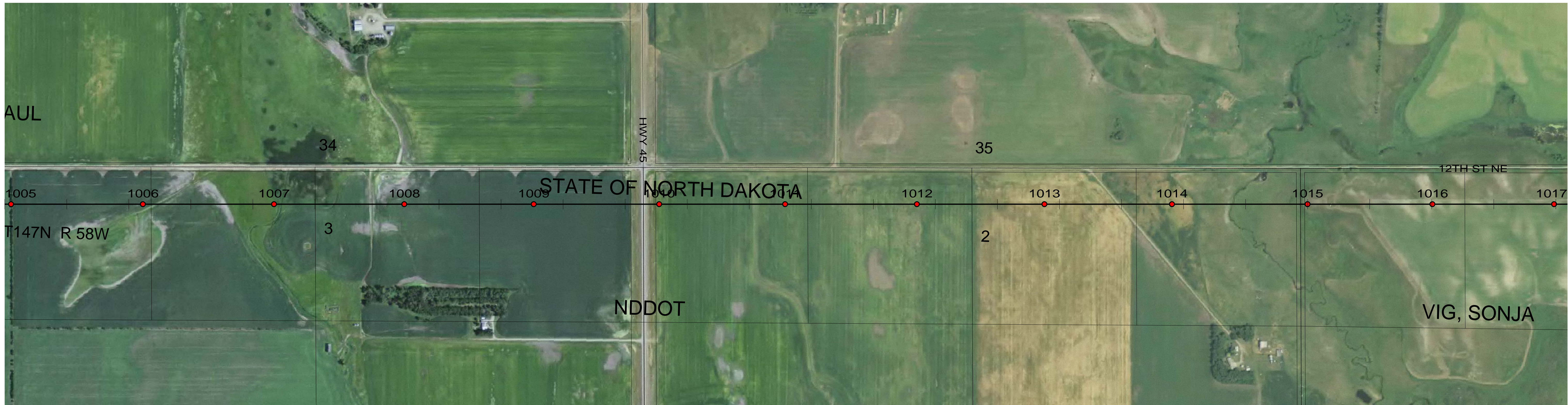
Center to Grand Forks Project

MPC COOPERATIVE, INC.

GRIGGS COUNTY

400.0 FT. HORIZ. SCALE
 40.0 FT. VERT. SCALE

DRAWING REV
 055-PP-GR994-011 2



CONDUCTOR: 959.6 KCMIL SUWANNEE ACSR/TW DISPLAYED @ EXTREME ICE, NO WIND; CLEARANCE: 30 FT
 OPGW: 49F69S - 24 STRAND, DISPLAYED @ -30 DEGREES F
 SHIELD WIRE: 1/2" EHS STEEL, DISPLAYED @ -30 DEGREES F

REV	DATE	APP	DESCRIPTION	DFTR
2	10/01/14	KJH	RECORD DRAWING	BEC
1	04/05/13	HWD	ADDED STR & FR DRAWING # S, OPGW SPLICE LOCATIONS	LRK
0	04/27/12	MFJ	ISSUED FOR CONSTRUCTION	LRK



8000 S. CHESTER STREET
 SUITE 500
 CENTENNIAL, CO 80112

A STANLEY GROUP COMPANY
 ENGINEERING, ENVIRONMENTAL AND
 CONSTRUCTION SERVICES - WORLDWIDE

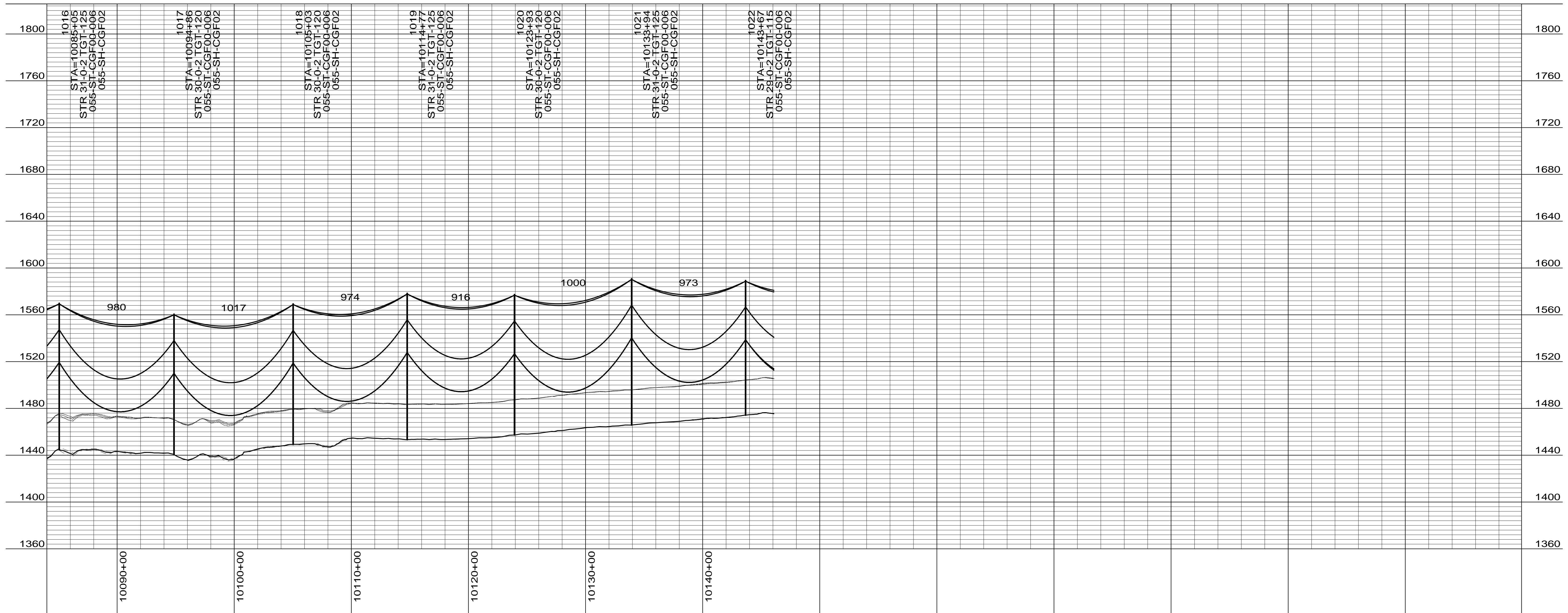
DESIGNED L.R.KETTER
 DRAWN B.E.CAMPBELL
 CHECKED H.W.DILLABOUGH
 APPROVED K.J.HARROLD
 DATE 04/26/2012



GRIGGS COUNTY

400.0 FT. HORIZ. SCALE
 40.0 FT. VERT. SCALE

DRAWING REV
 055-PP-GR1005-012 2



CONDUCTOR: 959.6 KCMIL SUWANNEE ACSR/TW DISPLAYED @ EXTREME ICE, NO WIND; CLEARANCE: 30 FT
 OPGW: 49F69S - 24 STRAND, DISPLAYED @ -30 DEGREES F
 SHIELD WIRE: 1/2" EHS STEEL, DISPLAYED @ -30 DEGREES F

REV	DATE	APP	DESCRIPTION	DFTR
2	10/01/14	KJH	RECORD DRAWING	BEC
1	04/05/13	HWD	ADDED STR & FR DRAWING # S, OPGW SPLICE LOCATIONS	LRK
0	04/27/12	MFJ	ISSUED FOR CONSTRUCTION	LRK



8000 S. CHESTER STREET
 SUITE 500
 CENTENNIAL, CO 80112

A STANLEY GROUP COMPANY
 ENGINEERING, ENVIRONMENTAL AND
 CONSTRUCTION SERVICES - WORLDWIDE

DESIGNED L.R.KETTER
 DRAWN B.E.CAMPBELL
 CHECKED H.W.DILLABOUGH
 APPROVED K.J.HARROLD
 DATE 04/26/2012



GRIGGS COUNTY

400.0 FT. HORIZ. SCALE
 40.0 FT. VERT. SCALE

DRAWING REV
 055-PP-GR1016-013 2