

CONDUCTOR: 959.6 KCMIL SUWANNEE ACSR/TW DISPLAYED @ EXTREME ICE, NO WIND; CLEARANCE: 30 FT  
 OPGW: 49F69S - 24 STRAND, DISPLAYED @ -30 DEGREES F  
 SHIELD WIRE: 1/2" EHS STEEL, DISPLAYED @ -30 DEGREES F

REV	DATE	APP	DESCRIPTION	DFTR
2	10/01/14	KJH	RECORD DRAWING	BEC
1	01/17/13	HWD	ADDED STR & FR DRAWING #'S, OPGW SPLICE LOCATIONS	LRK
0	05/11/12	MFJ	ISSUED FOR CONSTRUCTION	LRK



8000 S. CHESTER STREET  
 SUITE 500  
 CENTENNIAL, CO 80112

A STANLEY GROUP COMPANY  
 ENGINEERING, ENVIRONMENTAL AND  
 CONSTRUCTION SERVICES - WORLDWIDE

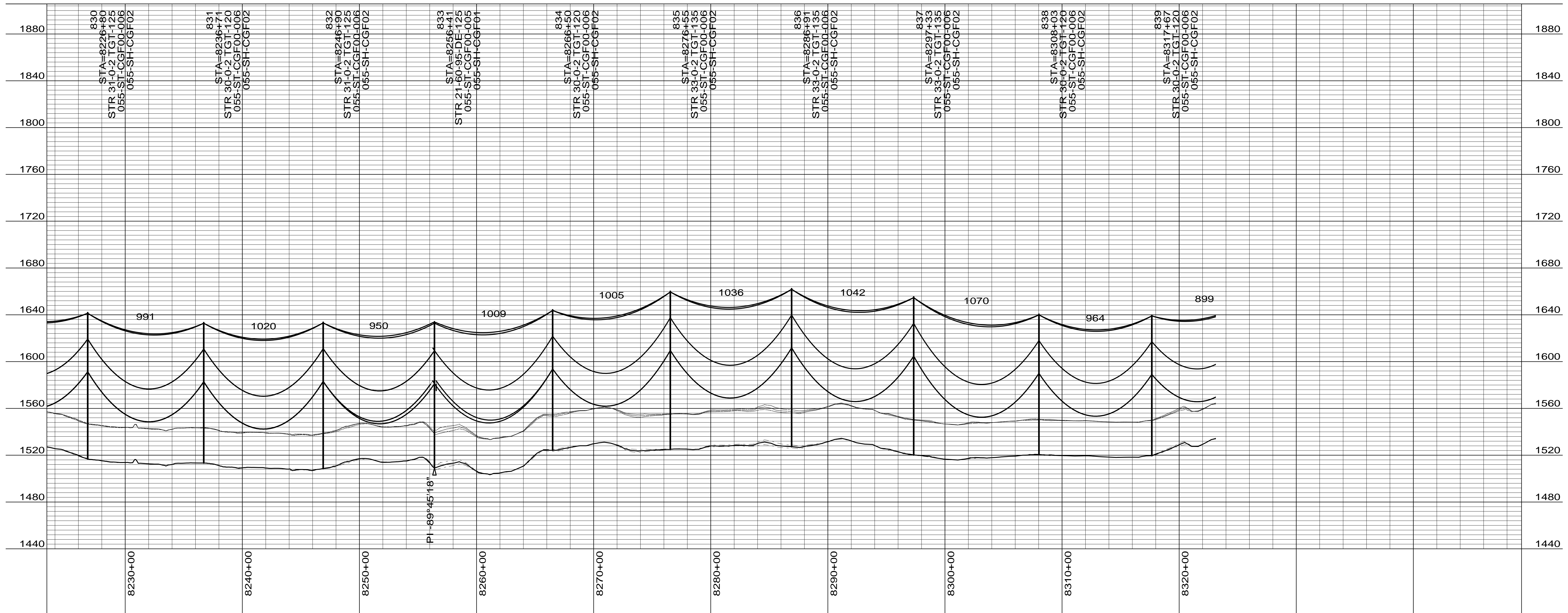
DESIGNED L.R.KETTER  
 DRAWN B.E.CAMPBELL  
 CHECKED H.W.DILLABOUGH  
 APPROVED K.J.HARROLD  
 APPROVED \_\_\_\_\_  
 DATE 01/17/2013



FOSTER COUNTY

400.0 FT. HORIZ. SCALE  
 40.0 FT. VERT. SCALE

DRAWING REV  
 055-PP-FS818-001 2



CONDUCTOR: 959.6 KCMIL SUWANNEE ACSR/TW DISPLAYED @ EXTREME ICE, NO WIND; CLEARANCE: 30 FT  
 OPGW: 49F69S - 24 STRAND, DISPLAYED @ -30 DEGREES F  
 SHIELD WIRE: 1/2" EHS STEEL, DISPLAYED @ -30 DEGREES F

REV	DATE	APP	DESCRIPTION	DFTR
2	10/01/14	KJH	RECORD DRAWING	BEC
1	01/17/13	HWD	ADDED STR & FR DRAWING # S, OPGW SPLICE LOCATIONS	LRK
0	05/11/12	MFJ	ISSUED FOR CONSTRUCTION	LRK



**Stanley Consultants INC.**

8000 S. CHESTER STREET  
 SUITE 500  
 CENTENNIAL, CO 80112

A STANLEY GROUP COMPANY  
 ENGINEERING, ENVIRONMENTAL AND  
 CONSTRUCTION SERVICES - WORLDWIDE

DESIGNED L.R.KETTER  
 DRAWN B.E.CAMPBELL  
 CHECKED H.W.DILLABOUGH  
 APPROVED K.J.HARROLD  
 APPROVED  
 DATE 01/17/2013

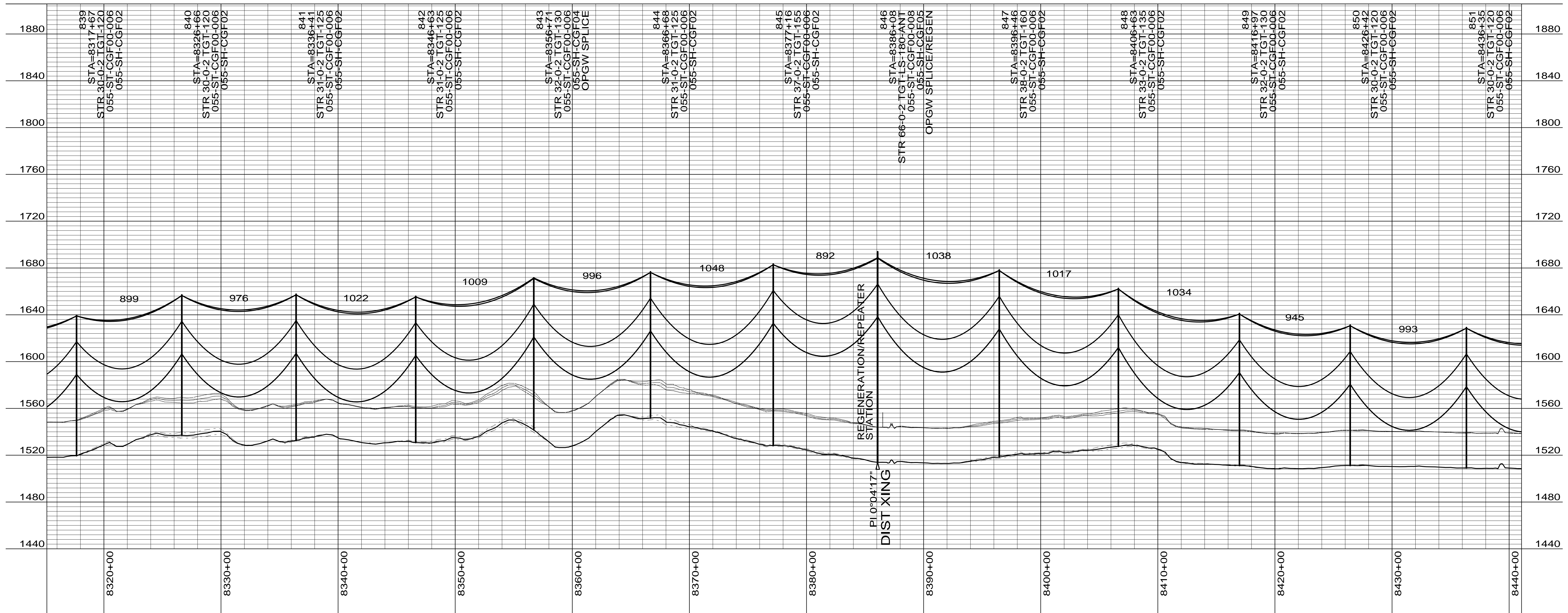
**Center to Grand Forks Project**



**FOSTER COUNTY**

400.0 FT. HORIZ. SCALE  
 40.0 FT. VERT. SCALE

DRAWING	REV
055-PP-FS830-002	2



CONDUCTOR: 959.6 KCMIL SUWANNEE ACSR/TW DISPLAYED @ EXTREME ICE, NO WIND; CLEARANCE: 30 FT  
 OPGW: 49F69S - 24 STRAND, DISPLAYED @ -30 DEGREES F  
 SHIELD WIRE: 1/2" EHS STEEL, DISPLAYED @ -30 DEGREES F

REV	DATE	APP	DESCRIPTION	DFTR
2	10/01/14	KJH	RECORD DRAWING	BEC
1	01/17/13	HWD	ADDED STR & FR DRAWING # S, OPGW SPLICE LOCATIONS	LRK
0	05/11/12	MFJ	ISSUED FOR CONSTRUCTION	LRK



8000 S. CHESTER STREET  
 SUITE 500  
 CENTENNIAL, CO 80112

A STANLEY GROUP COMPANY  
 ENGINEERING, ENVIRONMENTAL AND  
 CONSTRUCTION SERVICES - WORLDWIDE

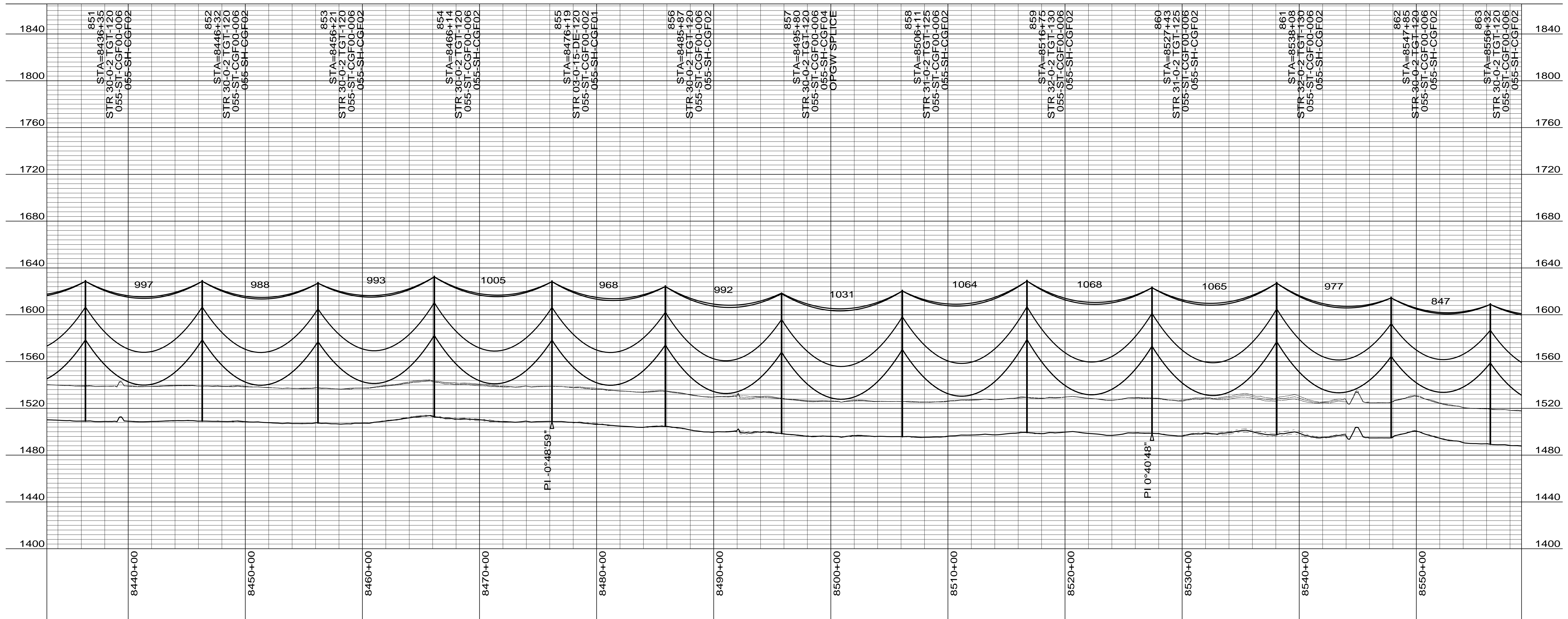
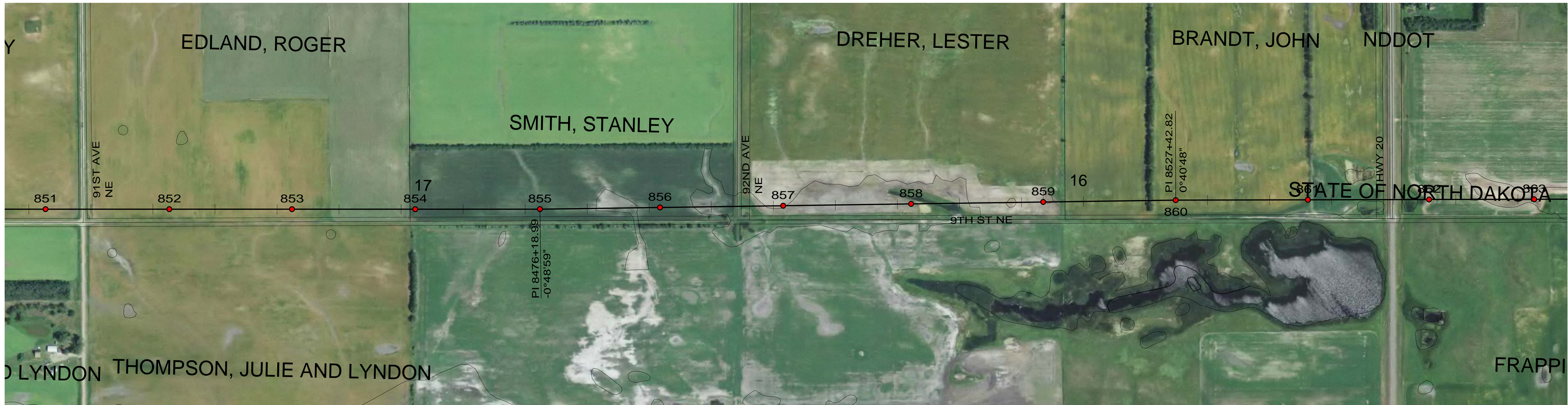
DESIGNED L.R.KETTER  
 DRAWN B.E.CAMPBELL  
 CHECKED H.W.DILLABOUGH  
 APPROVED K.J.HARROLD  
 APPROVED  
 DATE 01/17/2013



FOSTER COUNTY

400.0 FT. HORIZ. SCALE  
 40.0 FT. VERT. SCALE

DRAWING REV  
 055-PP-FS839-003 2



CONDUCTOR: 959.6 KCMIL SUWANNEE ACSR/TW DISPLAYED @ EXTREME ICE, NO WIND; CLEARANCE: 30 FT  
 OPGW: 49F69S - 24 STRAND, DISPLAYED @ -30 DEGREES F  
 SHIELD WIRE: 1/2" EHS STEEL, DISPLAYED @ -30 DEGREES F

REV	DATE	APP	DESCRIPTION	DFTR
2	10/01/14	KJH	RECORD DRAWING	BEC
1	01/17/13	HWD	ADDED STR & FR DRAWING # S, OPGW SPLICE LOCATIONS	LRK
0	05/11/12	MFJ	ISSUED FOR CONSTRUCTION	LRK



**Stanley Consultants INC.**

8000 S. CHESTER STREET  
 SUITE 500  
 CENTENNIAL, CO 80112

A STANLEY GROUP COMPANY  
 ENGINEERING, ENVIRONMENTAL AND  
 CONSTRUCTION SERVICES - WORLDWIDE

DESIGNED L.R.KETTER  
 DRAWN B.E.CAMPBELL  
 CHECKED H.W.DILLABOUGH  
 APPROVED K.J.HARROLD  
 APPROVED \_\_\_\_\_  
 DATE 01/17/2013

**Center to Grand Forks Project**

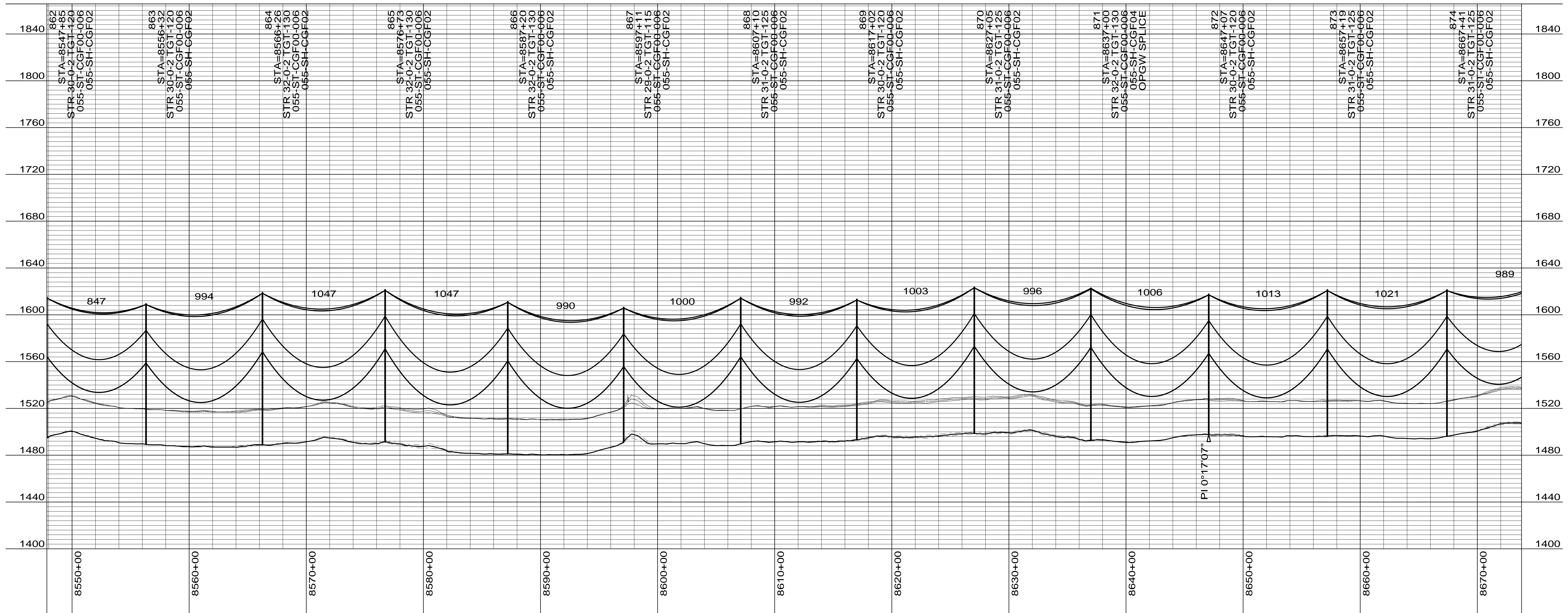
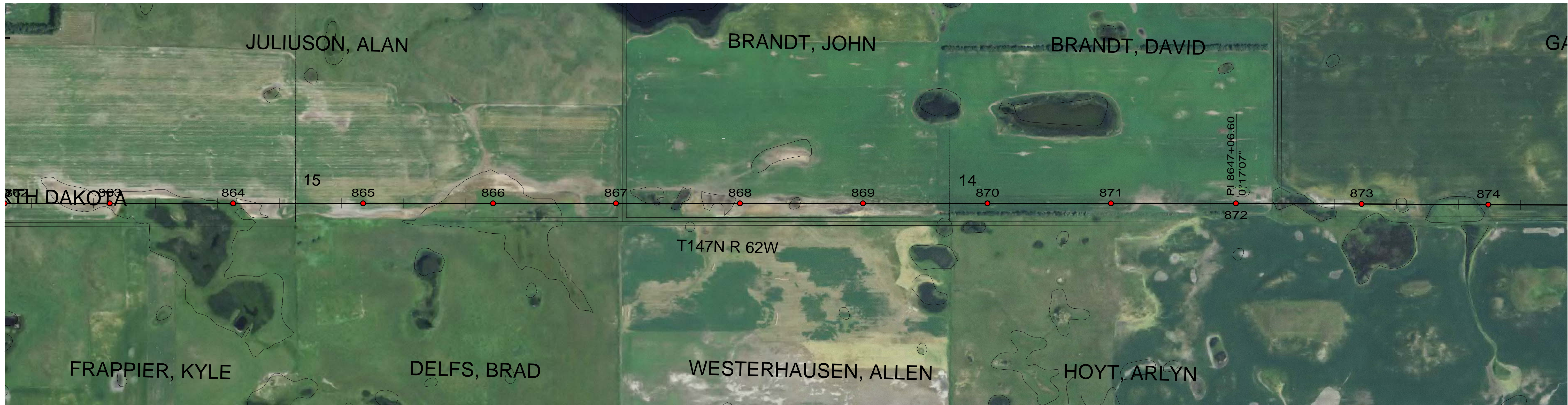


Minnkota Power  
 COOPERATIVE, INC.

**FOSTER COUNTY**

400.0 FT. HORIZ. SCALE  
 40.0 FT. VERT. SCALE

DRAWING REV  
 055-PP-FS851-004 2



CONDUCTOR: 959.6 KCMIL SUWANNEE ACSR/TW DISPLAYED @ EXTREME ICE, NO WIND; CLEARANCE: 30 FT  
 OPGW: 49F69S - 24 STRAND, DISPLAYED @ -30 DEGREES F  
 SHIELD WIRE: 1/2" EHS STEEL, DISPLAYED @ -30 DEGREES F

REV	DATE	APP	DESCRIPTION	DFTR
2	10/01/14	KJH	RECORD DRAWING	BEC
1	01/17/13	HWD	ADDED STR & FR DRAWING # S, OPGW SPLICE LOCATIONS	LRK
0	05/11/12	MFJ	ISSUED FOR CONSTRUCTION	LRK

8000 S. CHESTER STREET  
 SUITE 500  
 CENTENNIAL, CO 80112

A STANLEY GROUP COMPANY  
 ENGINEERING, ENVIRONMENTAL AND  
 CONSTRUCTION SERVICES - WORLDWIDE

DESIGNED L.R.KETTER  
 DRAWN B.E.CAMPBELL  
 CHECKED H.W.DILLABOUGH  
 APPROVED K.J.HARROLD  
 DATE 01/17/2013

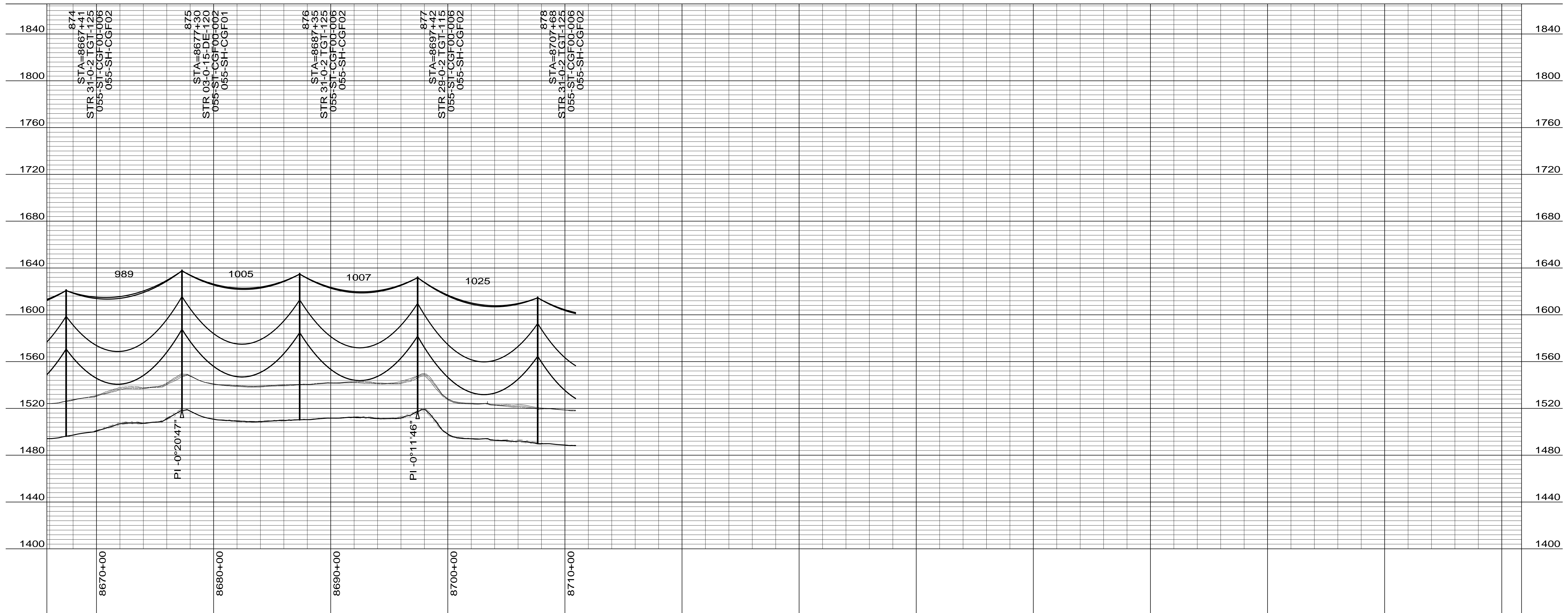
**Center to Grand Forks Project**

MPC COOPERATIVE, INC.

FOSTER COUNTY

400.0 FT. HORIZ. SCALE  
 40.0 FT. VERT. SCALE

DRAWING REV  
 055-PP-FS862-005 2



CONDUCTOR: 959.6 KCMIL SUWANNEE ACSR/TW DISPLAYED @ EXTREME ICE, NO WIND; CLEARANCE: 30 FT  
 OPGW: 49F69S - 24 STRAND, DISPLAYED @ -30 DEGREES F  
 SHIELD WIRE: 1/2" EHS STEEL, DISPLAYED @ -30 DEGREES F

REV	DATE	APP	DESCRIPTION	DFTR
2	10/01/14	KJH	RECORD DRAWING	BEC
1	01/17/13	HWD	ADDED STR & FR DRAWING # S, OPGW SPLICE LOCATIONS	LRK
0	05/11/12	MFJ	ISSUED FOR CONSTRUCTION	LRK



8000 S. CHESTER STREET  
 SUITE 500  
 CENTENNIAL, CO 80112

A STANLEY GROUP COMPANY  
 ENGINEERING, ENVIRONMENTAL AND  
 CONSTRUCTION SERVICES - WORLDWIDE

DESIGNED L.R.KETTER  
 DRAWN B.E.CAMPBELL  
 CHECKED H.W.DILLABOUGH  
 APPROVED K.J.HARROLD  
 DATE 01/17/2013



FOSTER COUNTY

400.0 FT. HORIZ. SCALE  
 40.0 FT. VERT. SCALE

DRAWING REV  
 055-PP-FS874-006 2