

CONDUCTOR: 959.6 KCMIL SUWANNEE ACSR/TW DISPLAYED @ EXTREME ICE, NO WIND; CLEARANCE: 30 FT  
 OPGW: 49F69S - 24 STRAND, DISPLAYED @ -30 DEGREES F  
 SHIELD WIRE: 1/2" EHS STEEL, DISPLAYED @ -30 DEGREES F

REV	DATE	APP	DESCRIPTION	DFTR
3	10/01/14	KJH	RECORD DRAWING	BEC
2	02/21/13	HWD	SHEET LAYOUT CHANGE	LRK
1	01/12/13	HWD	ADDED STR & FR DRAWING # S, OPGW SPLICE LOCATION	LRK

8000 S. CHESTER STREET  
 SUITE 500  
 CENTENNIAL, CO 80112

A STANLEY GROUP COMPANY  
 ENGINEERING, ENVIRONMENTAL AND  
 CONSTRUCTION SERVICES - WORLDWIDE

DESIGNED L.R.KETTER  
 DRAWN B.E.CAMPBELL  
 CHECKED H.W.DILLABOUGH  
 APPROVED K.J.HARROLD  
 DATE 05/24/2012

**Center to Grand Forks Project**

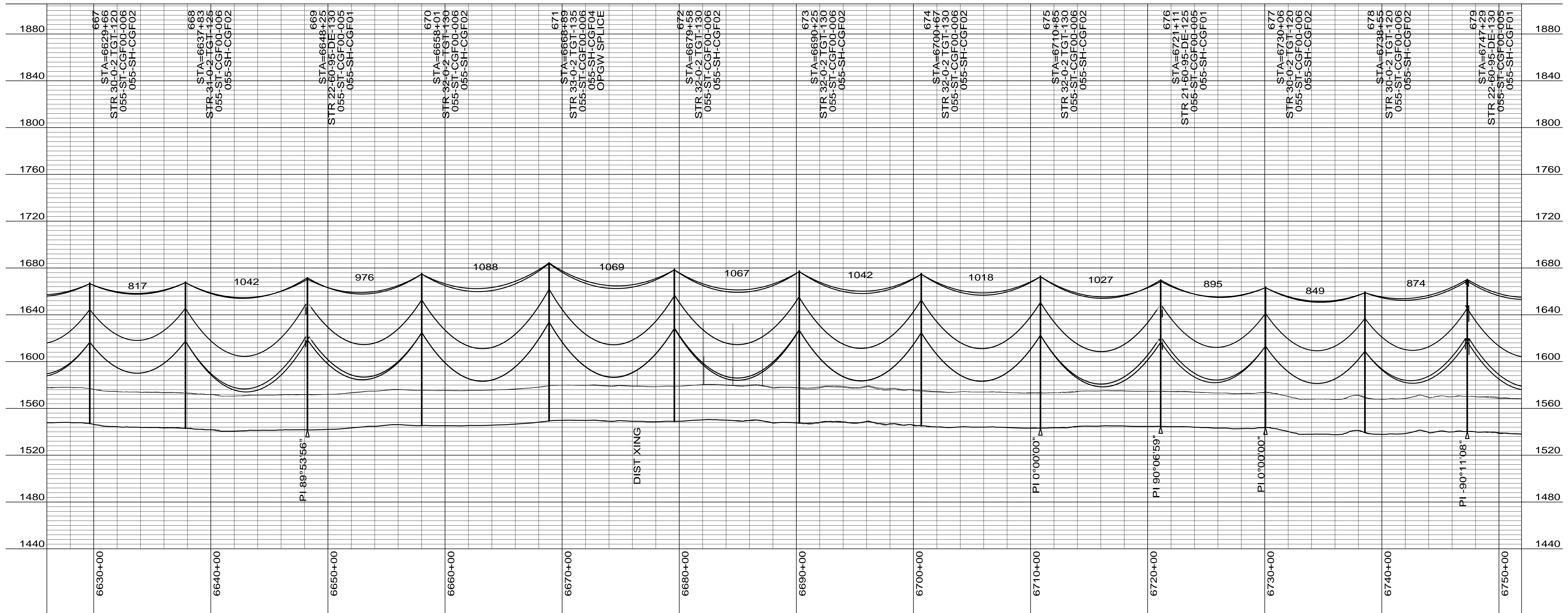
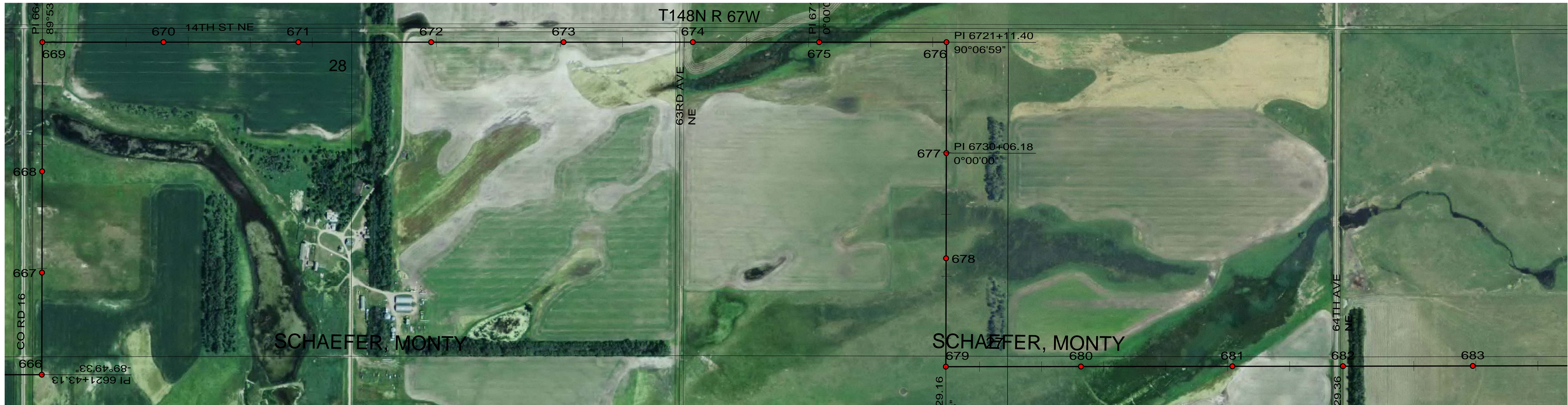
COOPERATIVE, INC.

EDDY COUNTY

400.0 FT. HORIZ. SCALE  
 40.0 FT. VERT. SCALE

DRAWING  
 055-PP-ED655-001

REV  
 3



CONDUCTOR: 959.6 KCMIL SUWANNEE ACSR/TW DISPLAYED @ EXTREME ICE, NO WIND; CLEARANCE: 30 FT  
 OPGW: 49F69S - 24 STRAND, DISPLAYED @ -30 DEGREES F  
 SHIELD WIRE: 1/2" EHS STEEL, DISPLAYED @ -30 DEGREES F

REV	DATE	APP	DESCRIPTION	DFTR
3	10/01/14	KJH	RECORD DRAWING	BEC
2	02/21/13	HWD	SHEET LAYOUT CHANGE	LRK
1	01/02/13	HWD	ADDED STR & FR DRAWING # S, OPGW SPLICE LOCATION	LRK

8000 S. CHESTER STREET  
 SUITE 500  
 CENTENNIAL, CO 80112

A STANLEY GROUP COMPANY  
 ENGINEERING, ENVIRONMENTAL AND  
 CONSTRUCTION SERVICES - WORLDWIDE

DESIGNED L.R.KETTER  
 DRAWN B.E.CAMPBELL  
 CHECKED H.W.DILLABOUGH  
 APPROVED K.J.HARROLD  
 APPROVED  
 DATE 05/24/2012

**Center to Grand Forks Project**

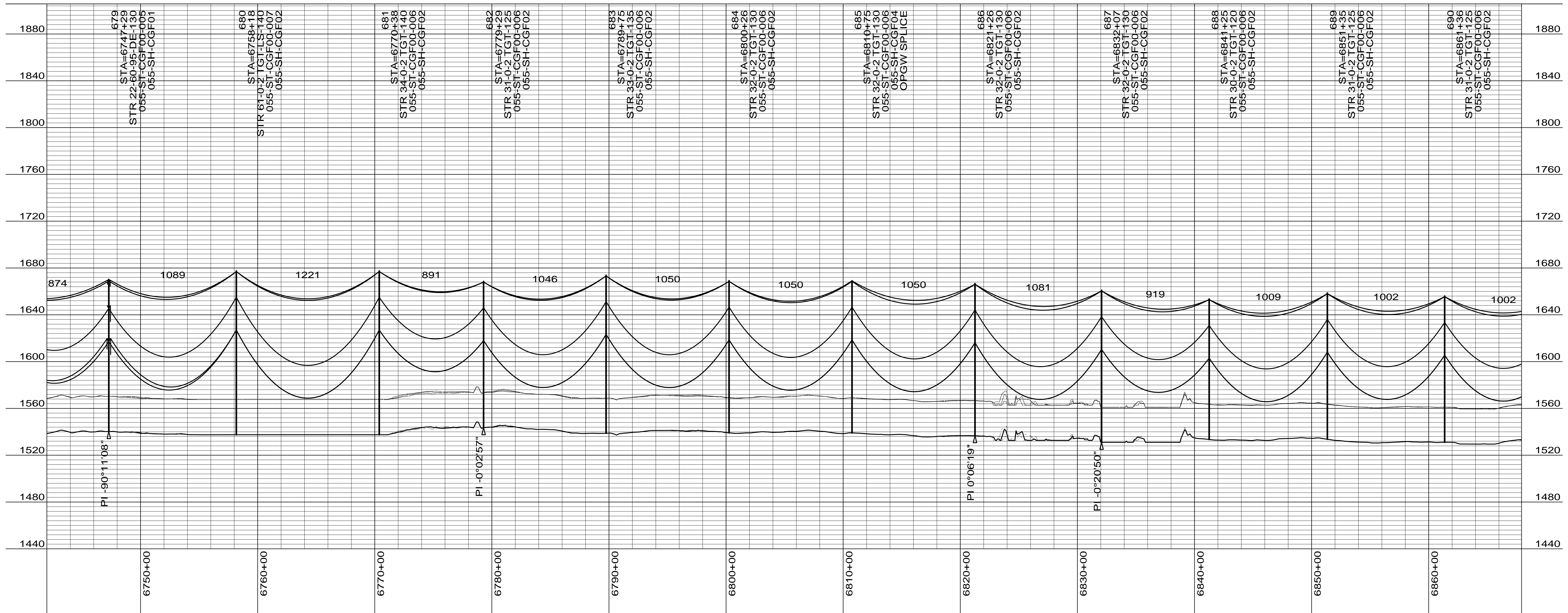
COOPERATIVE, INC.

EDDY COUNTY

400.0 FT. HORIZ. SCALE  
 40.0 FT. VERT. SCALE

DRAWING  
 055-PP-ED667-002

REV  
 3



CONDUCTOR: 959.6 KCMIL SUWANNEE ACSR/TW DISPLAYED @ EXTREME ICE, NO WIND; CLEARANCE: 30 FT  
 OPGW: 49F69S - 24 STRAND, DISPLAYED @ -30 DEGREES F  
 SHIELD WIRE: 1/2" EHS STEEL, DISPLAYED @ -30 DEGREES F

REV	DATE	APP	DESCRIPTION	DFTR
4	10/01/14	KJH	RECORD DRAWING	BEC
3	02/21/13	HWD	SHEET LAYOUT CHANGE	LRK
2	02/14/13	HWD	ADDED LONG SPAN STRUCTURE INFO	LRK

8000 S. CHESTER STREET  
 SUITE 500  
 CENTENNIAL, CO 80112

A STANLEY GROUP COMPANY  
 ENGINEERING, ENVIRONMENTAL AND  
 CONSTRUCTION SERVICES - WORLDWIDE

DESIGNED L.R.KETTER  
 DRAWN B.E.CAMPBELL  
 CHECKED H.W.DILLABOUGH  
 APPROVED K.J.HARROLD  
 APPROVED  
 DATE 05/24/2012

**Center to Grand Forks Project**

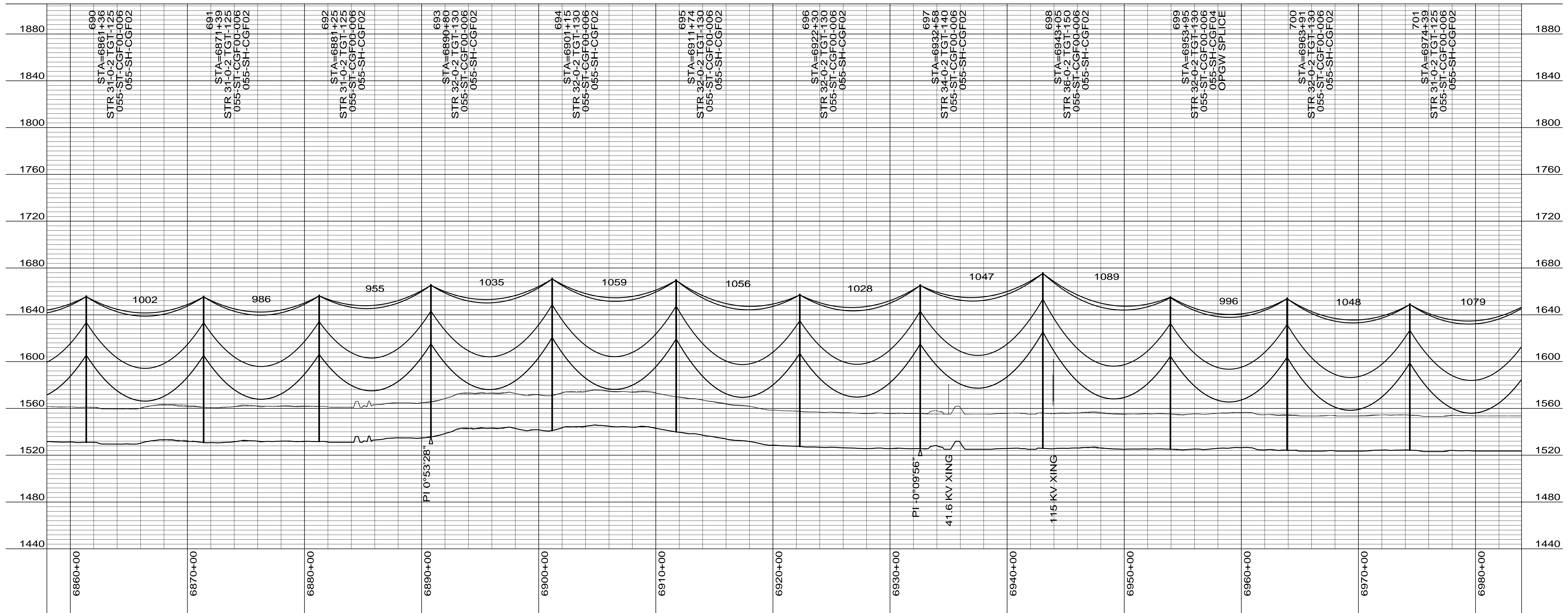
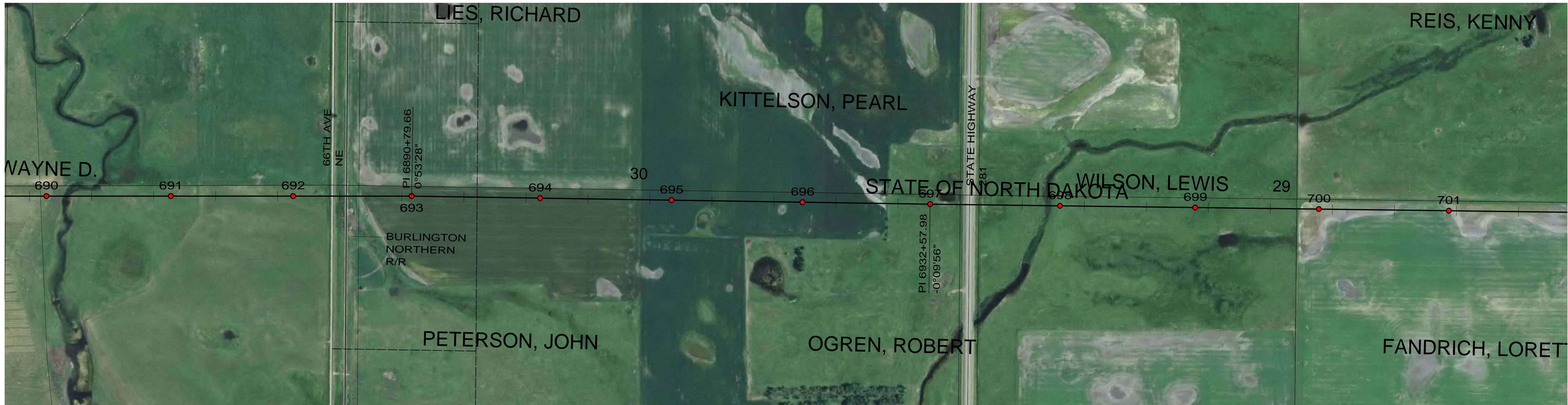
MPC COOPERATIVE, INC.

EDDY COUNTY

400.0 FT. HORIZ. SCALE  
 40.0 FT. VERT. SCALE

DRAWING  
 055-PP-ED679-003

REV  
 4



CONDUCTOR: 959.6 KCMIL SUWANNEE ACSR/TW DISPLAYED @ EXTREME ICE, NO WIND; CLEARANCE: 30 FT  
 OPGW: 49F69S - 24 STRAND, DISPLAYED @ -30 DEGREES F  
 SHIELD WIRE: 1/2" EHS STEEL, DISPLAYED @ -30 DEGREES F

REV	DATE	APP	DESCRIPTION	DFTR
3	10/01/14	KJH	RECORD DRAWING	BEC
2	02/21/13	HWD	SHEET LAYOUT CHANGE	LRK
1	01/02/13	HWD	ADDED STR & FR DRAWING # S, OPGW SPLICE LOCATION	LRK



8000 S. CHESTER STREET  
 SUITE 500  
 CENTENNIAL, CO 80112

**Stanley Consultants Inc.**  
 A STANLEY GROUP COMPANY  
 ENGINEERING, ENVIRONMENTAL AND  
 CONSTRUCTION SERVICES - WORLDWIDE

DESIGNED L.R.KETTER  
 DRAWN B.E.CAMPBELL  
 CHECKED H.W.DILLABOUGH  
 APPROVED K.J.HARROLD  
 APPROVED  
 DATE 05/24/2012

**Center to Grand Forks Project**



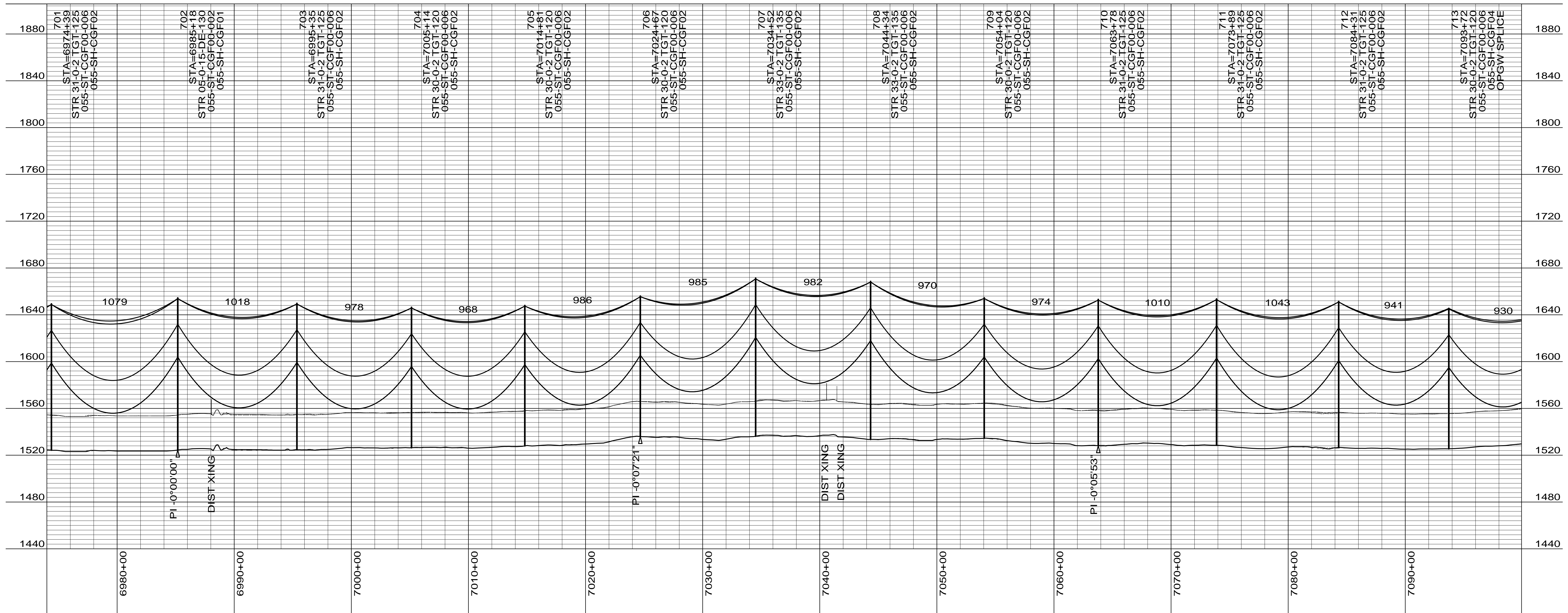
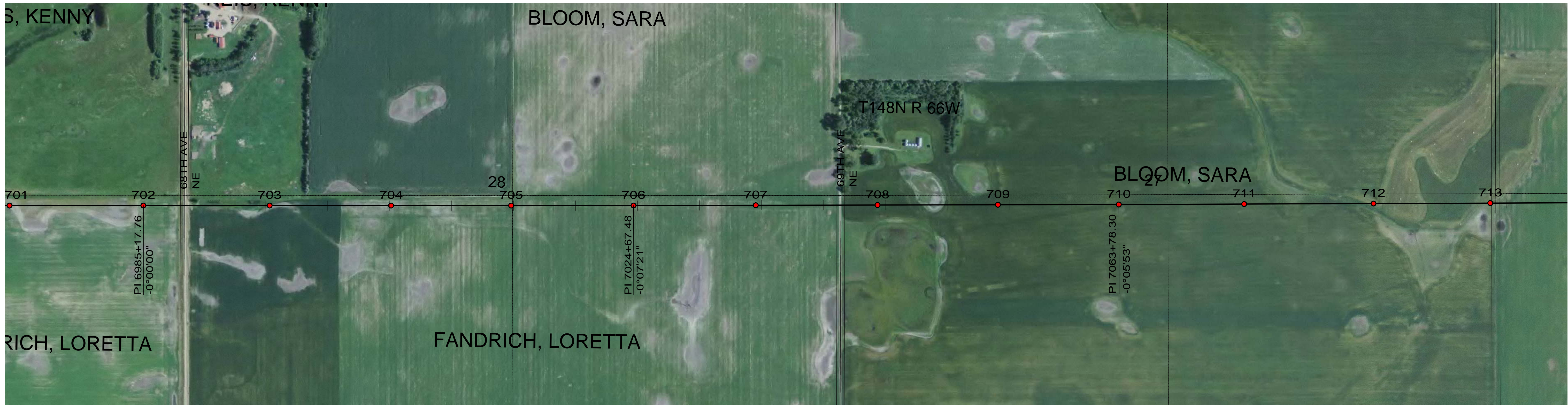
COOPERATIVE, INC.

**EDDY COUNTY**

400.0 FT. HORIZ. SCALE  
 40.0 FT. VERT. SCALE

DRAWING  
 055-PP-ED690-004

REV  
 3



CONDUCTOR: 959.6 KCMIL SUWANNEE ACSR/TW DISPLAYED @ EXTREME ICE, NO WIND; CLEARANCE: 30 FT  
 OPGW: 49F69S - 24 STRAND, DISPLAYED @ -30 DEGREES F  
 SHIELD WIRE: 1/2" EHS STEEL, DISPLAYED @ -30 DEGREES F

REV	DATE	APP	DESCRIPTION	DFTR
3	10/01/14	KJH	RECORD DRAWING	BEC
2	02/21/13	HWD	SHEET LAYOUT CHANGE	LRK
1	01/02/13	HWD	ADDED STR & FR DRAWING # S, OPGW SPLICE LOCATION	LRK

8000 S. CHESTER STREET  
 SUITE 500  
 CENTENNIAL, CO 80112

A STANLEY GROUP COMPANY  
 ENGINEERING, ENVIRONMENTAL AND  
 CONSTRUCTION SERVICES - WORLDWIDE

DESIGNED L.R.KETTER  
 DRAWN B.E.CAMPBELL  
 CHECKED H.W.DILLABOUGH  
 APPROVED K.J.HARROLD  
 APPROVED  
 DATE 05/24/2012

**Center to Grand Forks Project**

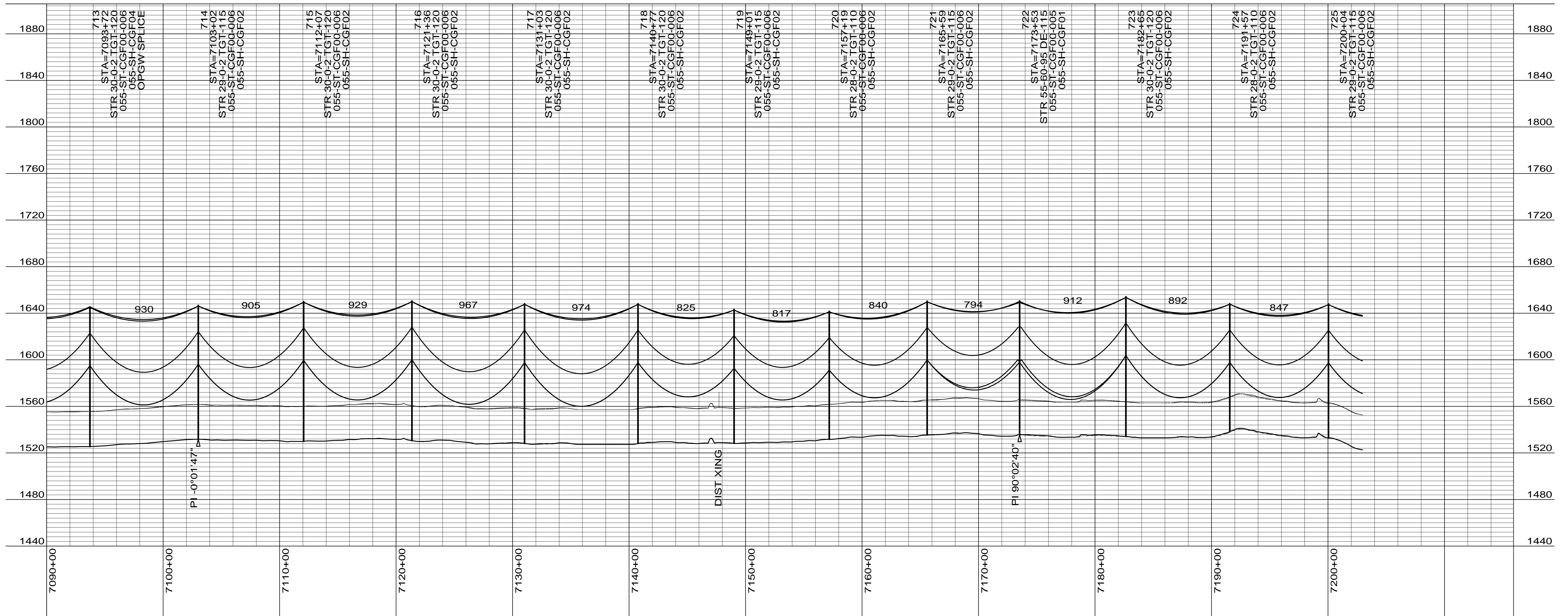
COOPERATIVE, INC.

EDDY COUNTY

400.0 FT. HORIZ. SCALE  
 40.0 FT. VERT. SCALE

DRAWING  
 055-PP-ED701-005

REV  
 3



CONDUCTOR: 959.6 KCMIL SUWANNEE ACSR/TW DISPLAYED @ EXTREME ICE, NO WIND; CLEARANCE: 30 FT  
 OPGW: 49F69S - 24 STRAND, DISPLAYED @ -30 DEGREES F  
 SHIELD WIRE: 1/2" EHS STEEL, DISPLAYED @ -30 DEGREES F

REV	DATE	APP	DESCRIPTION	DFTR
3	10/01/14	KJH	RECORD DRAWING	BEC
2	02/21/13	HWD	SHEET LAYOUT CHANGE	LRK
1	01/02/13	HWD	ADDED STR & FR DRAWING # S, OPGW SPLICE LOCATION	LRK

8000 S. CHESTER STREET  
 SUITE 500  
 CENTENNIAL, CO 80112

A STANLEY GROUP COMPANY  
 ENGINEERING, ENVIRONMENTAL AND  
 CONSTRUCTION SERVICES - WORLDWIDE

DESIGNED L.R.KETTER  
 DRAWN B.E.CAMPBELL  
 CHECKED H.W.DILLABOUGH  
 APPROVED K.J.HARROLD  
 APPROVED DATE 05/24/2012

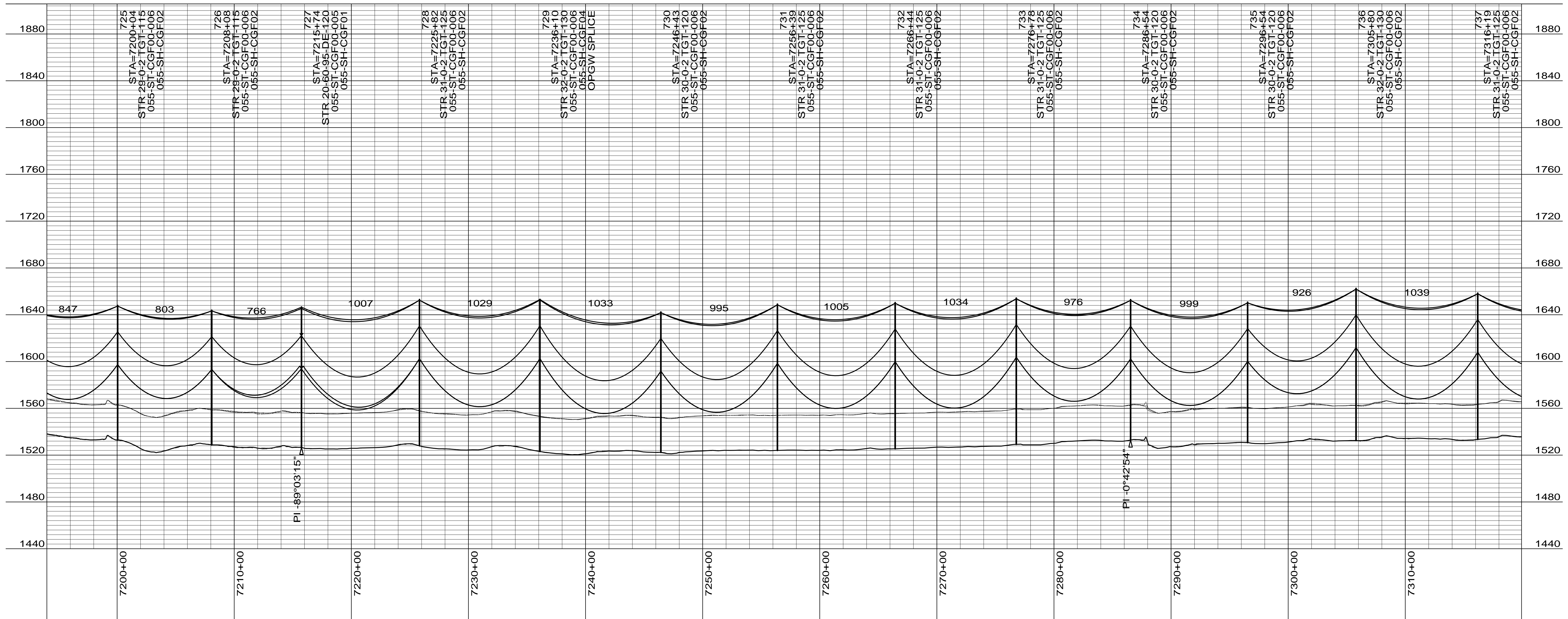
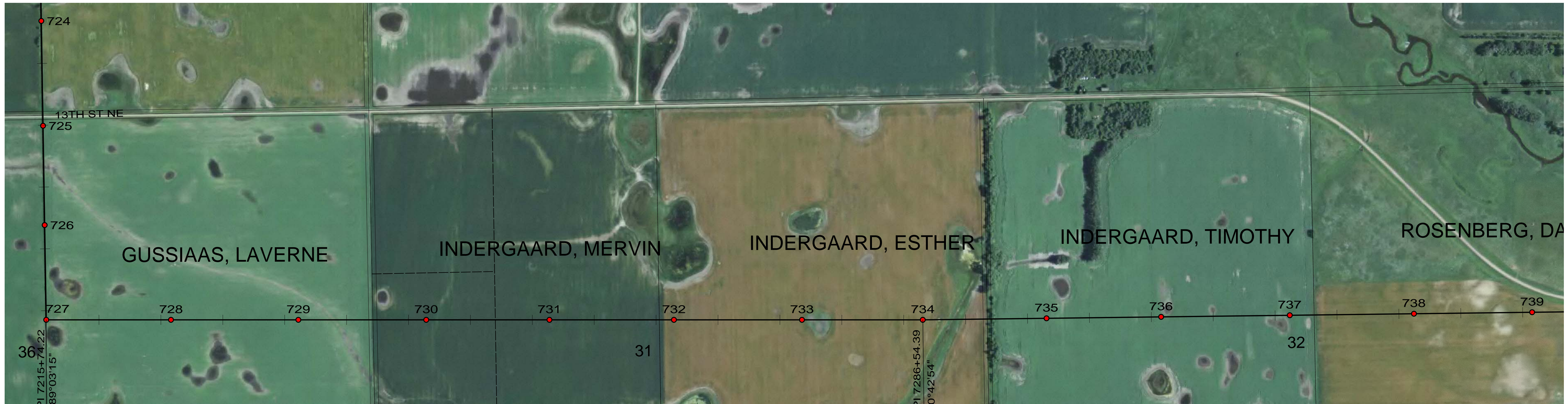
**Center to Grand Forks Project**

COOPERATIVE, INC.

EDDY COUNTY

400.0 FT. HORIZ. SCALE  
 40.0 FT. VERT. SCALE

DRAWING REV  
 055-PP-ED713-006 3



CONDUCTOR: 959.6 KCMIL SUWANNEE ACSR/TW DISPLAYED @ EXTREME ICE, NO WIND; CLEARANCE: 30 FT  
 OPGW: 49F69S - 24 STRAND, DISPLAYED @ -30 DEGREES F  
 SHIELD WIRE: 1/2" EHS STEEL, DISPLAYED @ -30 DEGREES F

REV	DATE	APP	DESCRIPTION	DFTR
3	10/01/14	KJH	RECORD DRAWING	BEC
2	02/21/13	HWD	SHEET LAYOUT CHANGE	LRK
1	01/02/13	HWD	ADDED STR & FR DRAWING # S, OPGW SPLICE LOCATION	LRK

8000 S. CHESTER STREET  
 SUITE 500  
 CENTENNIAL, CO 80112

A STANLEY GROUP COMPANY  
 ENGINEERING, ENVIRONMENTAL AND  
 CONSTRUCTION SERVICES - WORLDWIDE

DESIGNED L.R.KETTER  
 DRAWN B.E.CAMPBELL  
 CHECKED H.W.DILLABOUGH  
 APPROVED K.J.HARROLD  
 DATE 05/24/2012

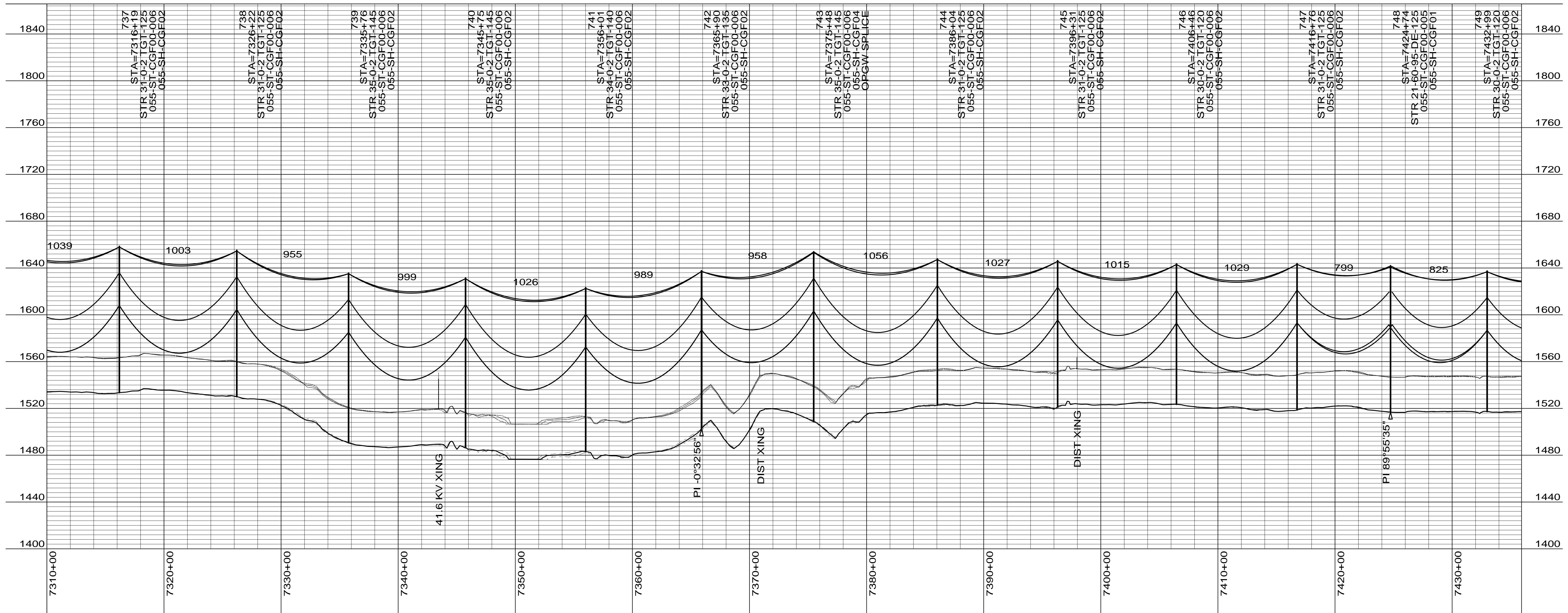
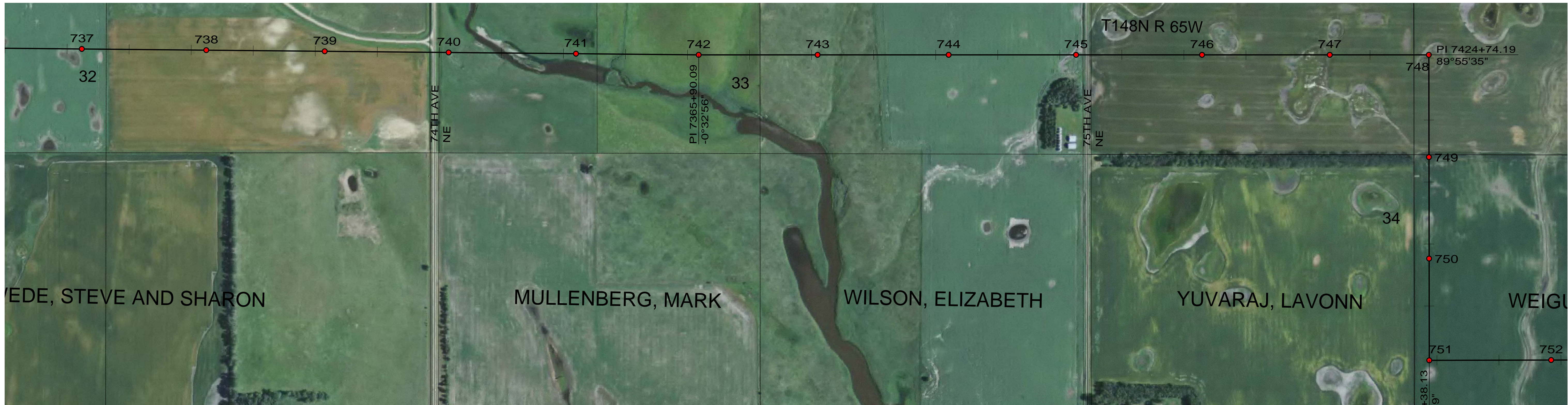
**Center to Grand Forks Project**

COOPERATIVE, INC.

EDDY COUNTY

400.0 FT. HORIZ. SCALE  
 40.0 FT. VERT. SCALE

DRAWING REV  
 055-PP-ED725-007 3



CONDUCTOR: 959.6 KCMIL SUWANNEE ACSR/TW DISPLAYED @ EXTREME ICE, NO WIND; CLEARANCE: 30 FT  
 OPGW: 49F69S - 24 STRAND, DISPLAYED @ -30 DEGREES F  
 SHIELD WIRE: 1/2" EHS STEEL, DISPLAYED @ -30 DEGREES F

REV	DATE	APP	DESCRIPTION	DFTR
3	10/01/14	KJH	RECORD DRAWING	BEC
2	02/21/13	HWD	SHEET LAYOUT CHANGE	LRK
1	01/02/13	HWD	ADDED STR & FR DRAWING # S, OPGW SPLICE LOCATION	LRK



8000 S. CHESTER STREET  
 SUITE 500  
 CENTENNIAL, CO 80112

**Stanley Consultants Inc.**

A STANLEY GROUP COMPANY  
 ENGINEERING, ENVIRONMENTAL AND  
 CONSTRUCTION SERVICES - WORLDWIDE

DESIGNED L.R.KETTER  
 DRAWN B.E.CAMPBELL  
 CHECKED H.W.DILLABOUGH  
 APPROVED K.J.HARROLD  
 APPROVED  
 DATE 05/24/2012

**Center to Grand Forks Project**

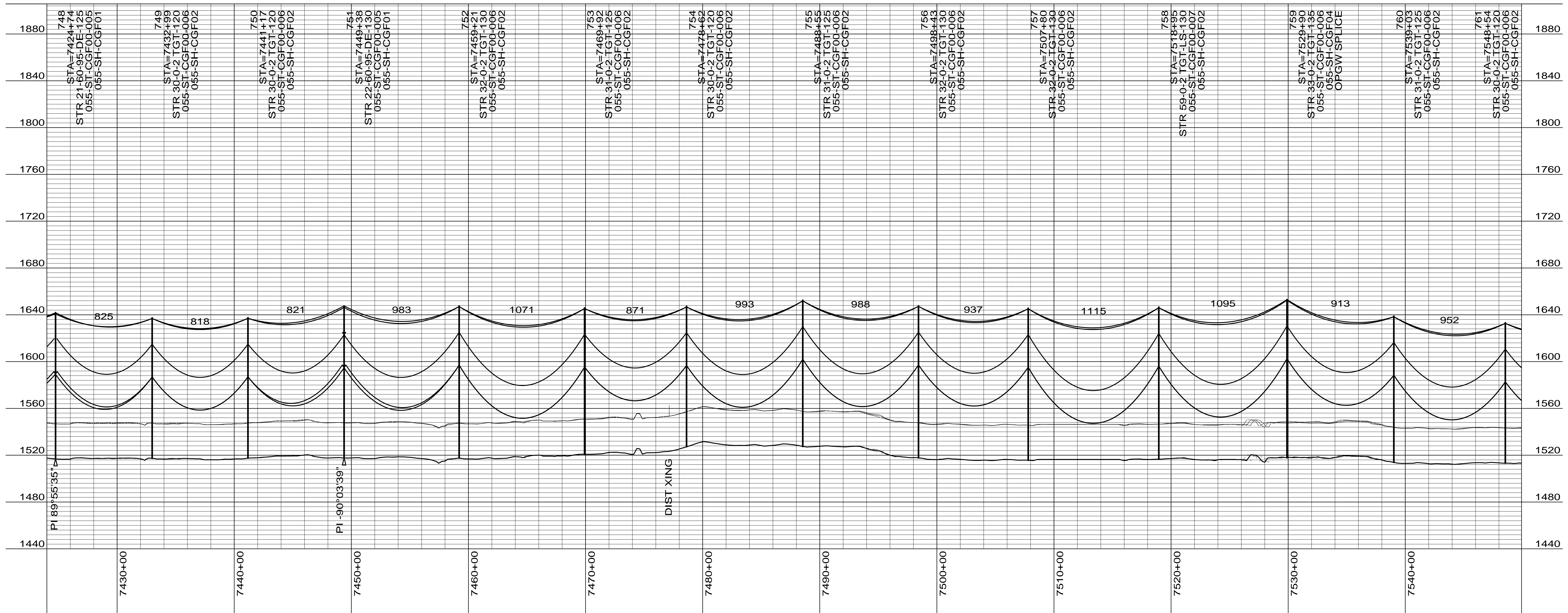
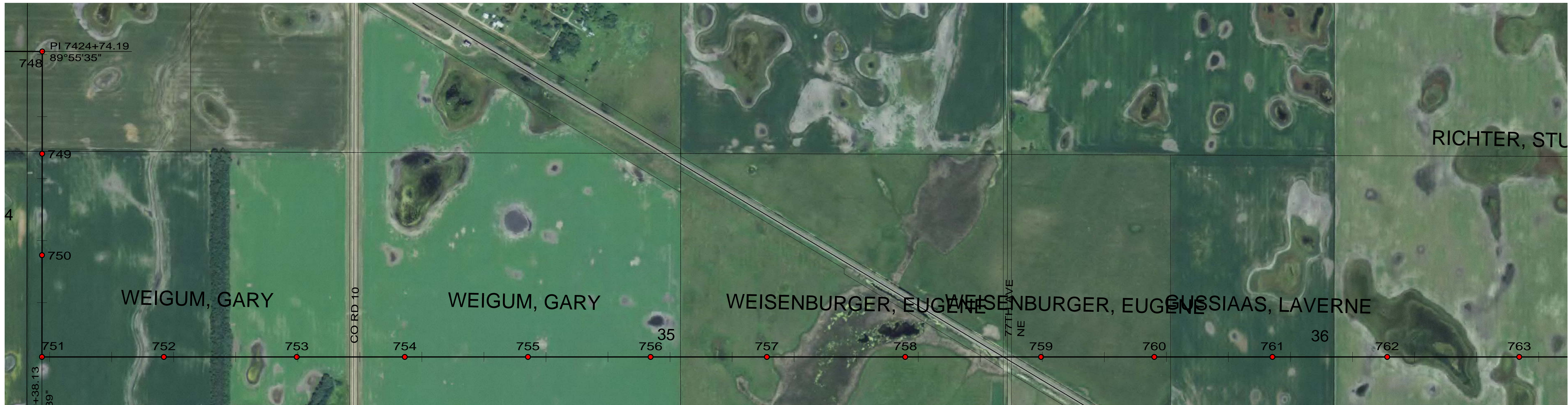


COOPERATIVE, INC.

EDDY COUNTY

400.0 FT. HORIZ. SCALE  
 40.0 FT. VERT. SCALE

DRAWING REV  
 055-PP-ED737-008 3



CONDUCTOR: 959.6 KCMIL SUWANNEE ACSR/TW DISPLAYED @ EXTREME ICE, NO WIND; CLEARANCE: 30 FT  
 OPGW: 49F69S - 24 STRAND, DISPLAYED @ -30 DEGREES F  
 SHIELD WIRE: 1/2" EHS STEEL, DISPLAYED @ -30 DEGREES F

REV	DATE	APP	DESCRIPTION	DFTR
4	10/01/14	KJH	RECORD DRAWING	BEC
3	02/21/13	HWD	SHEET LAYOUT CHANGE	LRK
2	02/14/13	HWD	ADDED LONG SPAN STRUCTURE INFO	LRK



8000 S. CHESTER STREET  
 SUITE 500  
 CENTENNIAL, CO 80112

**Stanley Consultants Inc.**  
 A STANLEY GROUP COMPANY  
 ENGINEERING, ENVIRONMENTAL AND  
 CONSTRUCTION SERVICES - WORLDWIDE

DESIGNED L.R.KETTER  
 DRAWN B.E.CAMPBELL  
 CHECKED H.W.DILLABOUGH  
 APPROVED K.J.HARROLD  
 APPROVED  
 DATE 05/24/2012

**Center to Grand Forks Project**



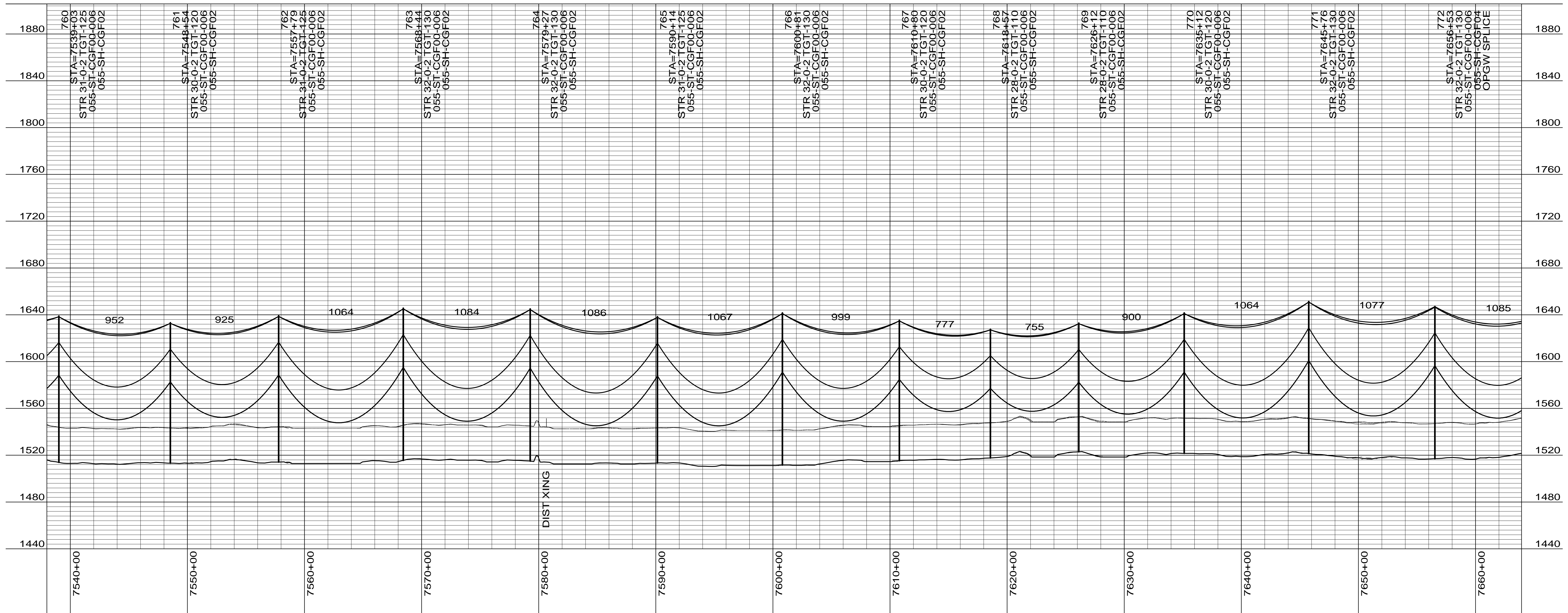
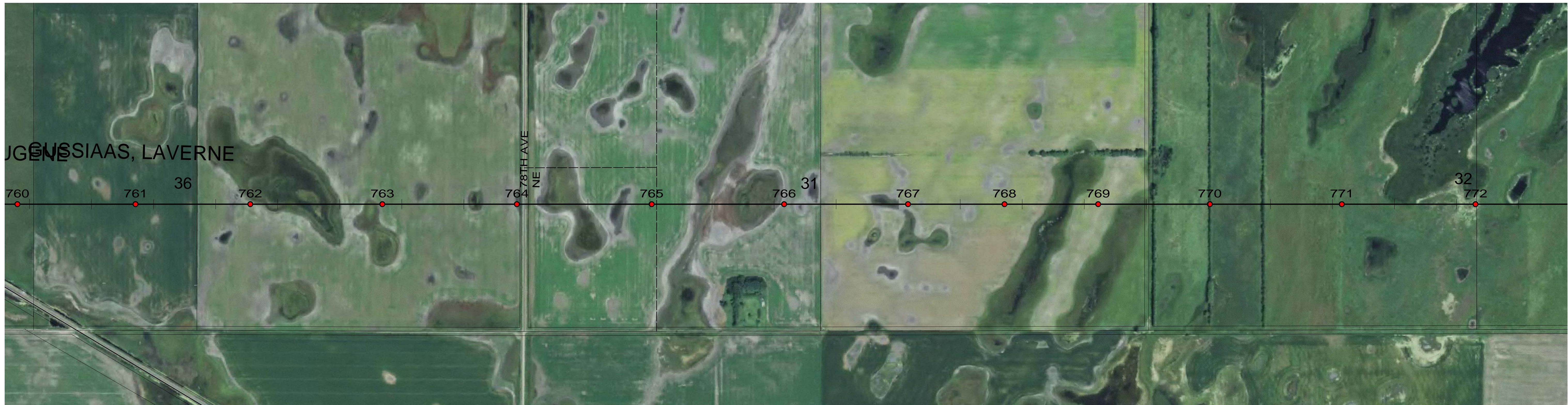
COOPERATIVE, INC.

EDDY COUNTY

400.0 FT. HORIZ. SCALE  
 40.0 FT. VERT. SCALE

DRAWING  
 055-PP-ED748-009

REV  
 4



CONDUCTOR: 959.6 KCMIL SUWANNEE ACSR/TW DISPLAYED @ EXTREME ICE, NO WIND; CLEARANCE: 30 FT  
 OPGW: 49F69S - 24 STRAND, DISPLAYED @ -30 DEGREES F  
 SHIELD WIRE: 1/2" EHS STEEL, DISPLAYED @ -30 DEGREES F

REV	DATE	APP	DESCRIPTION	DFTR
3	10/01/14	KJH	RECORD DRAWING	BEC
2	02/21/13	HWD	SHEET LAYOUT CHANGE	LRK
1	01/02/13	HWD	ADDED STR & FR DRAWING # S, OPGW SPLICE LOCATION	LRK



8000 S. CHESTER STREET  
 SUITE 500  
 CENTENNIAL, CO 80112

**Stanley Consultants Inc.**

A STANLEY GROUP COMPANY  
 ENGINEERING, ENVIRONMENTAL AND  
 CONSTRUCTION SERVICES - WORLDWIDE

DESIGNED L.R.KETTER  
 DRAWN B.E.CAMPBELL  
 CHECKED H.W.DILLABOUGH  
 APPROVED K.J.HARROLD  
 DATE 05/24/2012

**Center to Grand Forks Project**

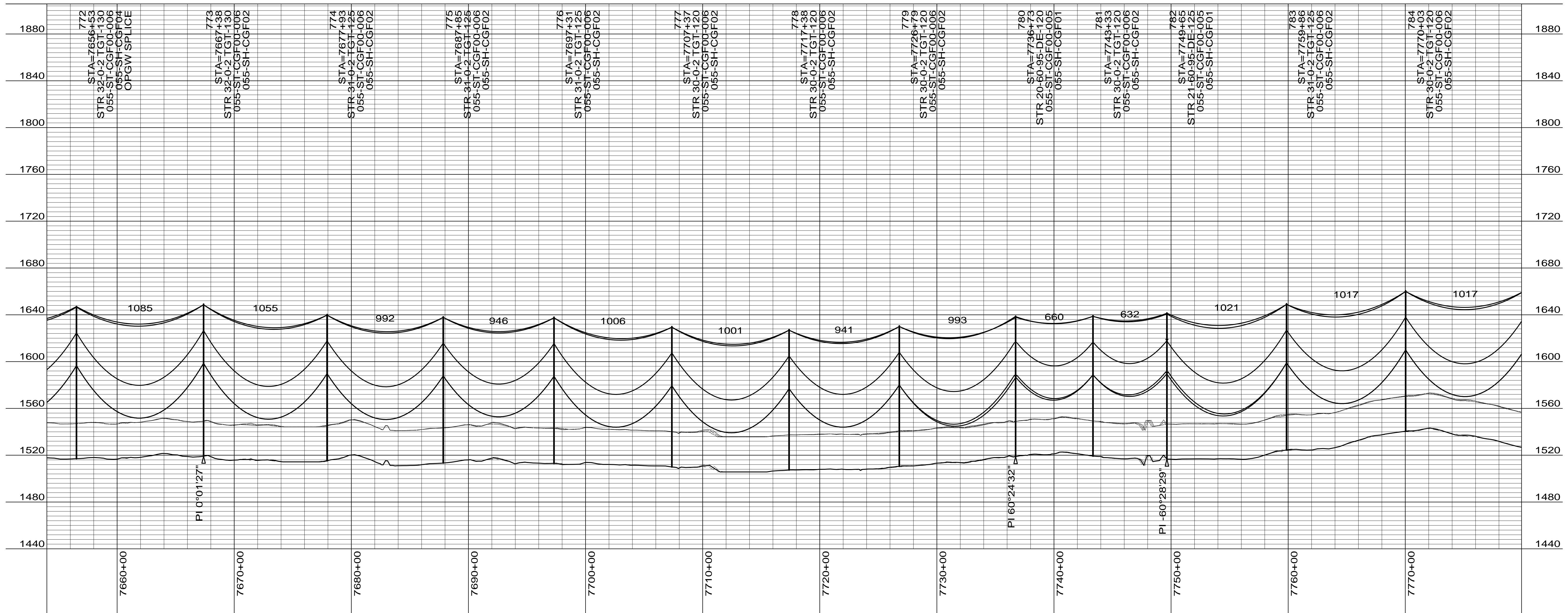
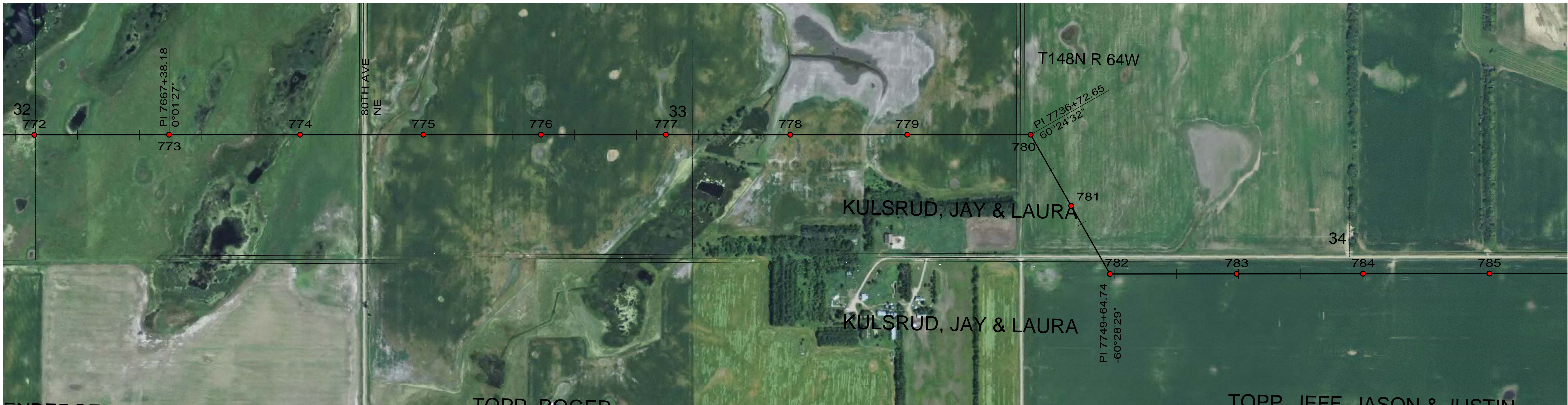


COOPERATIVE, INC.

**EDDY COUNTY**

400.0 FT. HORIZ. SCALE  
 40.0 FT. VERT. SCALE

DRAWING REV  
 055-PP-ED760-010 3



CONDUCTOR: 959.6 KCMIL SUWANNEE ACSR/TW DISPLAYED @ EXTREME ICE, NO WIND; CLEARANCE: 30 FT  
 OPGW: 49F69S - 24 STRAND, DISPLAYED @ -30 DEGREES F  
 SHIELD WIRE: 1/2" EHS STEEL, DISPLAYED @ -30 DEGREES F

REV	DATE	APP	DESCRIPTION	DFTR
3	10/01/14	KJH	RECORD DRAWING	BEC
2	02/21/13	HWD	SHEET LAYOUT CHANGE	LRK
1	01/02/13	HWD	ADDED STR & FR DRAWING # S, OPGW SPLICE LOCATION	LRK



**Stanley Consultants Inc.**  
 A STANLEY GROUP COMPANY  
 ENGINEERING, ENVIRONMENTAL AND  
 CONSTRUCTION SERVICES - WORLDWIDE

8000 S. CHESTER STREET  
 SUITE 500  
 CENTENNIAL, CO 80112

DESIGNED L.R.KETTER  
 DRAWN B.E.CAMPBELL  
 CHECKED H.W.DILLABOUGH  
 APPROVED K.J.HARROLD  
 APPROVED  
 DATE 05/24/2012

**Center to Grand Forks Project**



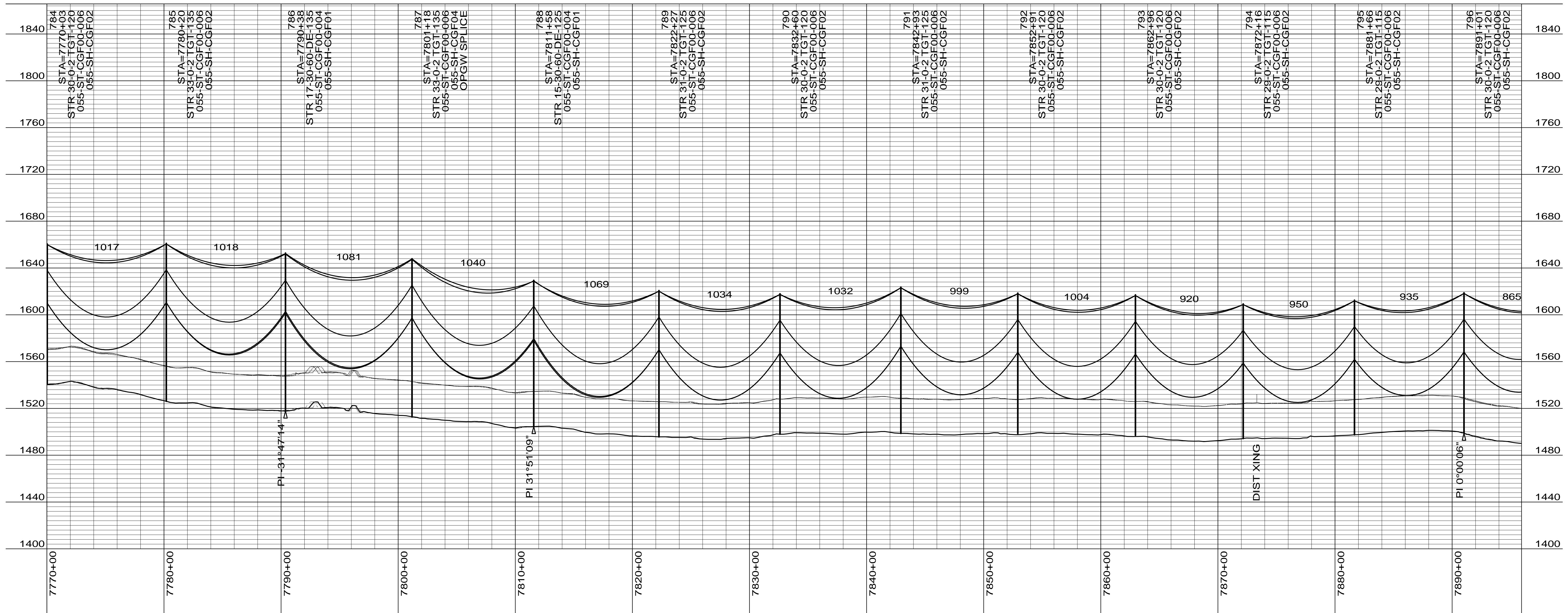
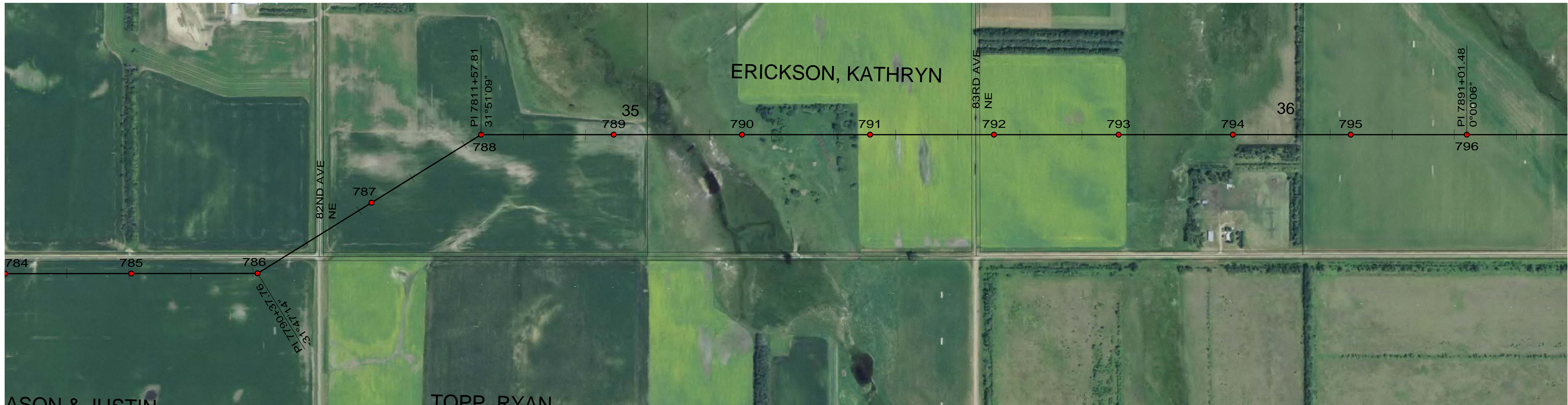
**Minnkota Power**  
 COOPERATIVE, INC.

**EDDY COUNTY**

400.0 FT. HORIZ. SCALE  
 40.0 FT. VERT. SCALE

DRAWING  
 055-PP-ED772-011

REV  
 3



CONDUCTOR: 959.6 KCMIL SUWANNEE ACSR/TW DISPLAYED @ EXTREME ICE, NO WIND; CLEARANCE: 30 FT  
 OPGW: 49F69S - 24 STRAND, DISPLAYED @ -30 DEGREES F  
 SHIELD WIRE: 1/2" EHS STEEL, DISPLAYED @ -30 DEGREES F

REV	DATE	APP	DESCRIPTION	DFTR
3	10/01/14	KJH	RECORD DRAWING	BEC
2	02/21/13	HWD	SHEET LAYOUT CHANGE	LRK
1	01/02/13	HWD	ADDED STR & FR DRAWING # S, OPGW SPLICE LOCATION	LRK



**Stanley Consultants Inc.**  
 A STANLEY GROUP COMPANY  
 ENGINEERING, ENVIRONMENTAL AND  
 CONSTRUCTION SERVICES - WORLDWIDE

8000 S. CHESTER STREET  
 SUITE 500  
 CENTENNIAL, CO 80112

DESIGNED L.R.KETTER  
 DRAWN B.E.CAMPBELL  
 CHECKED H.W.DILLABOUGH  
 APPROVED K.J.HARROLD  
 DATE 05/24/2012

**Center to Grand Forks Project**

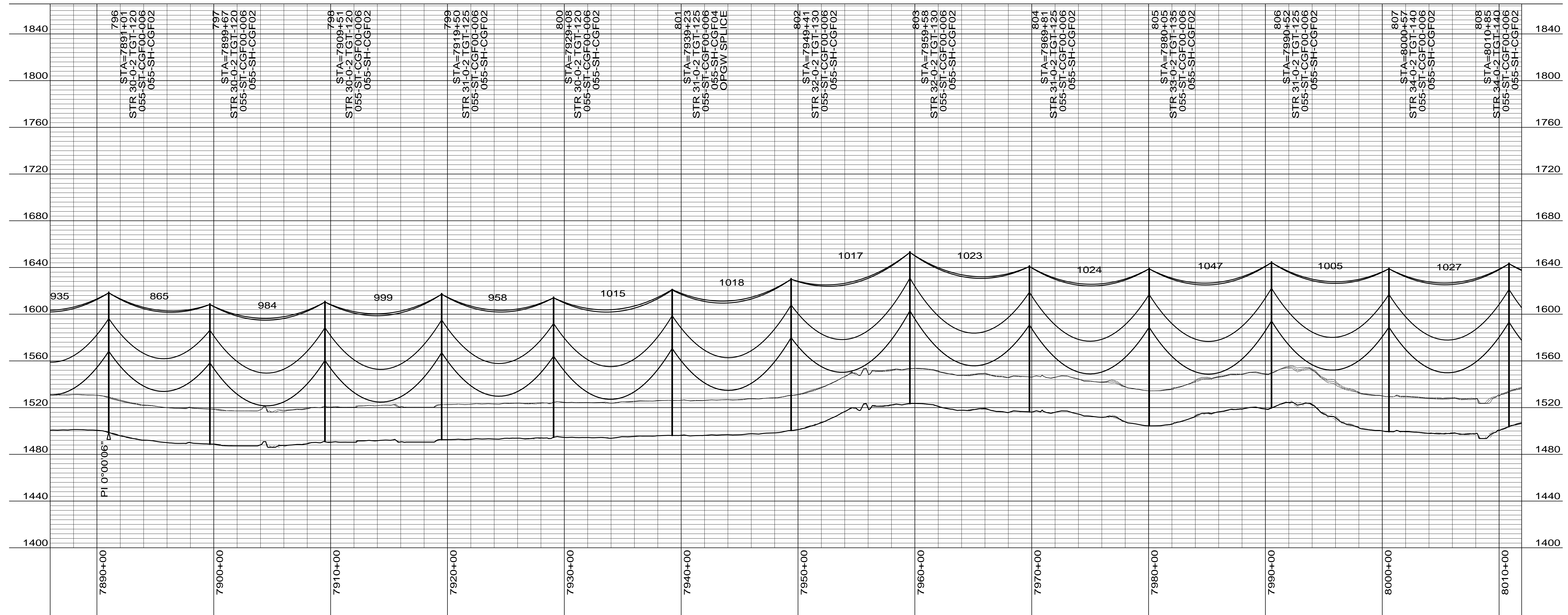
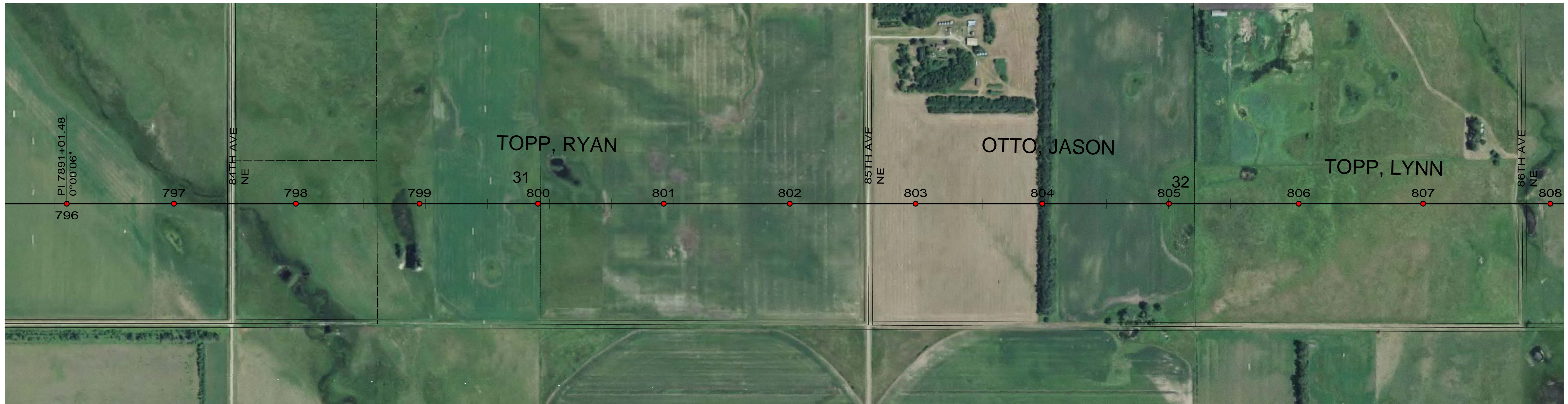


**Minnkota Power**  
 COOPERATIVE, INC.

**EDDY COUNTY**

400.0 FT. HORIZ. SCALE  
 40.0 FT. VERT. SCALE

DRAWING REV  
 055-PP-ED784-012 3



CONDUCTOR: 959.6 KCMIL SUWANNEE ACSR/TW DISPLAYED @ EXTREME ICE, NO WIND; CLEARANCE: 30 FT  
 OPGW: 49F69S - 24 STRAND, DISPLAYED @ -30 DEGREES F  
 SHIELD WIRE: 1/2" EHS STEEL, DISPLAYED @ -30 DEGREES F

REV	DATE	APP	DESCRIPTION	DFTR
3	10/01/14	KJH	RECORD DRAWING	BEC
2	02/21/13	HWD	SHEET LAYOUT CHANGE	LRK
1	01/02/13	HWD	ADDED STR & FR DRAWING # S, OPGW SPLICE LOCATION	LRK



8000 S. CHESTER STREET  
 SUITE 500  
 CENTENNIAL, CO 80112

**Stanley Consultants Inc.**

A STANLEY GROUP COMPANY  
 ENGINEERING, ENVIRONMENTAL AND  
 CONSTRUCTION SERVICES - WORLDWIDE

DESIGNED L.R.KETTER  
 DRAWN B.E.CAMPBELL  
 CHECKED H.W.DILLABOUGH  
 APPROVED K.J.HARROLD  
 APPROVED  
 DATE 05/24/2012

**Center to Grand Forks Project**



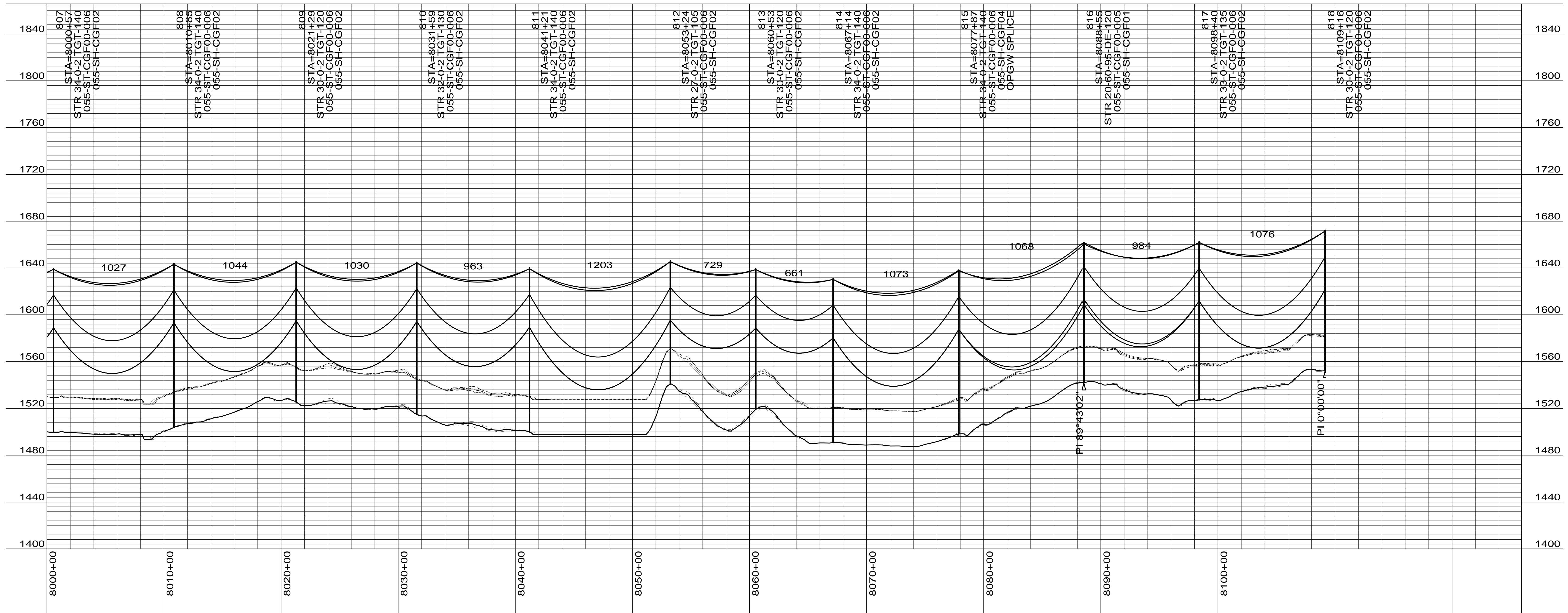
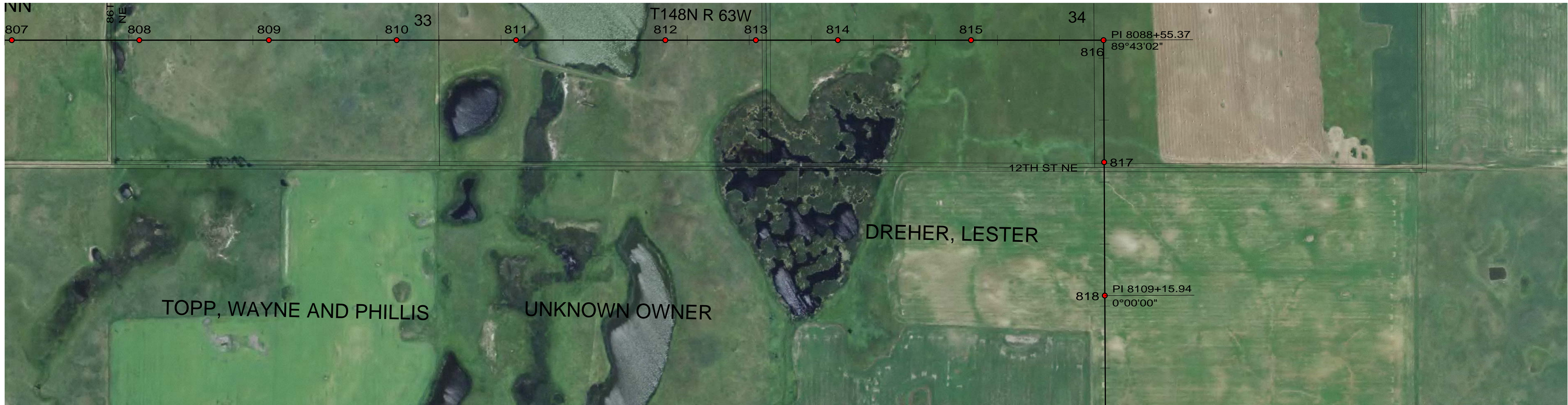
MPC COOPERATIVE, INC.

EDDY COUNTY

400.0 FT. HORIZ. SCALE  
 40.0 FT. VERT. SCALE

DRAWING  
 055-PP-ED796-013

REV  
 3



CONDUCTOR: 959.6 KCMIL SUWANNEE ACSR/TW DISPLAYED @ EXTREME ICE, NO WIND; CLEARANCE: 30 FT  
 OPGW: 49F69S - 24 STRAND, DISPLAYED @ -30 DEGREES F  
 SHIELD WIRE: 1/2" EHS STEEL, DISPLAYED @ -30 DEGREES F

REV	DATE	APP	DESCRIPTION	DFTR
3	10/01/14	KJH	RECORD DRAWING	BEC
2	02/21/13	HWD	SHEET LAYOUT CHANGE	LRK
1	01/02/13	HWD	ADDED STR & FR DRAWING # S, OPGW SPLICE LOCATION	LRK



8000 S. CHESTER STREET  
 SUITE 500  
 CENTENNIAL, CO 80112

**Stanley Consultants Inc.**

A STANLEY GROUP COMPANY  
 ENGINEERING, ENVIRONMENTAL AND  
 CONSTRUCTION SERVICES - WORLDWIDE

DESIGNED L.R.KETTER  
 DRAWN B.E.CAMPBELL  
 CHECKED H.W.DILLABOUGH  
 APPROVED K.J.HARROLD  
 DATE 05/24/2012

**Center to Grand Forks Project**



COOPERATIVE, INC.

**EDDY COUNTY**

400.0 FT. HORIZ. SCALE  
 40.0 FT. VERT. SCALE

DRAWING  
 055-PP-ED807-014

REV  
 3