



TETRA TECH EC, INC.

RECEIVED

September 8, 2010

SEP 08 2010

Darrell Nitschke
North Dakota Public Service Commission
600 E. Blvd. Dept. 408
Bismarck, ND 58505-0480

PUBLIC SERVICE COMMISSION

SUBJECT: Oliver III Transmission Line, Case No. PU-09-724

Dear Mr. Nitschke,

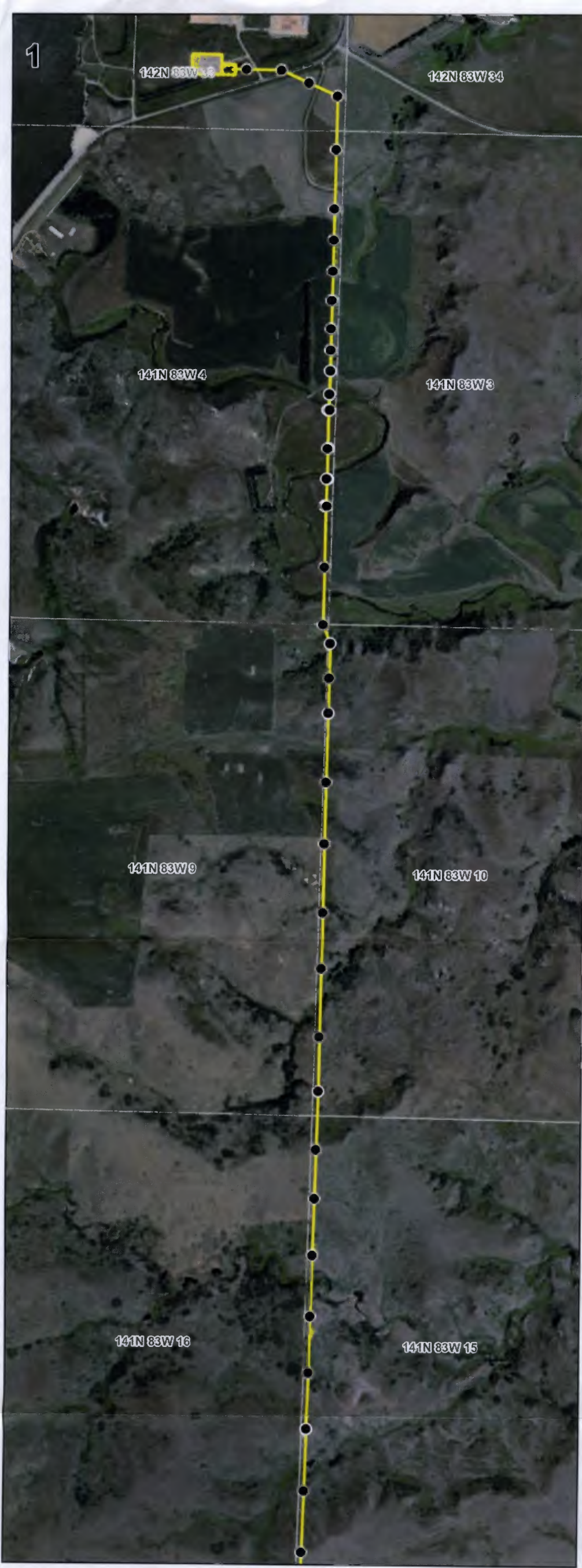
On behalf of NextEra Energy Resources, Inc., Tetra Tech is pleased to provide you one original and ten copies of the following documents in support of the Application for a Certificate of Corridor Compatibility and Application for a Route Permit for the above referenced project:

- Oliver III Transmission Line Route
- Northern Terminus Schematic
- Substation Extension Schematic
- Pole Structure Configurations

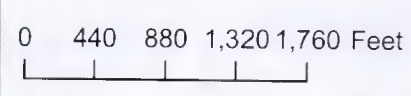
These documents have also been provided in electronic format to ndpsc@nd.gov on September 8, 2010. Please feel free to contact me at (512) 338-1667 or Anne-Marie.Griger@tetrattech.com if you have any questions.

Sincerely,

Anne-Marie Griger, AICP
Deputy Project Manager/Environmental Planner

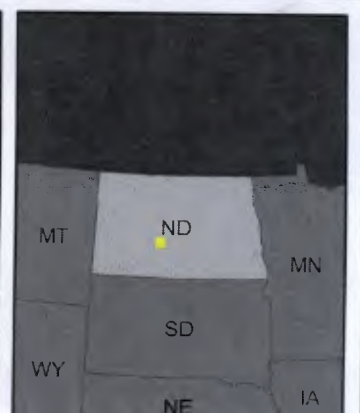
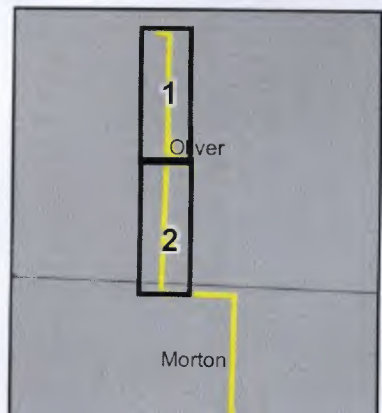


- Transmission Line Pole Location
- Transmission Line
- Township/Section/Range



NextEra Oliver III Transmission Line Route and Pole Locations - North

September 2010



File: P:\FEU_Energy\Dakotas\Contract 0172 and 3664 - Oliver County Wind
Contract 3664 Oliver III IV and VIGS\Sites\BMD
Oliver III_Line_090710.mxd
Prepared By: William Scales
September 2010



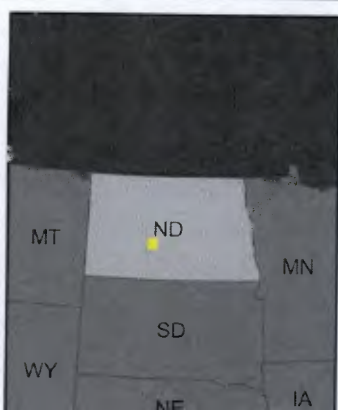
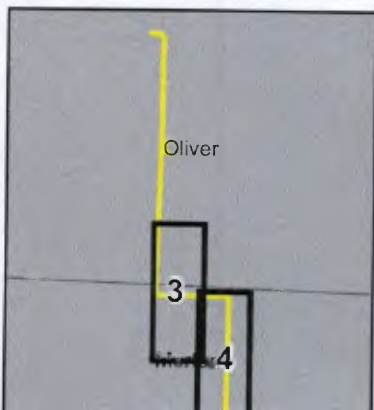
- Transmission Line Pole Location
- Transmission Line
- Township/Section/Range

NextEra Oliver III
Transmission Line Route
and Pole Locations - South

September 2010

0 450 900 1,350 1,800 Feet

N

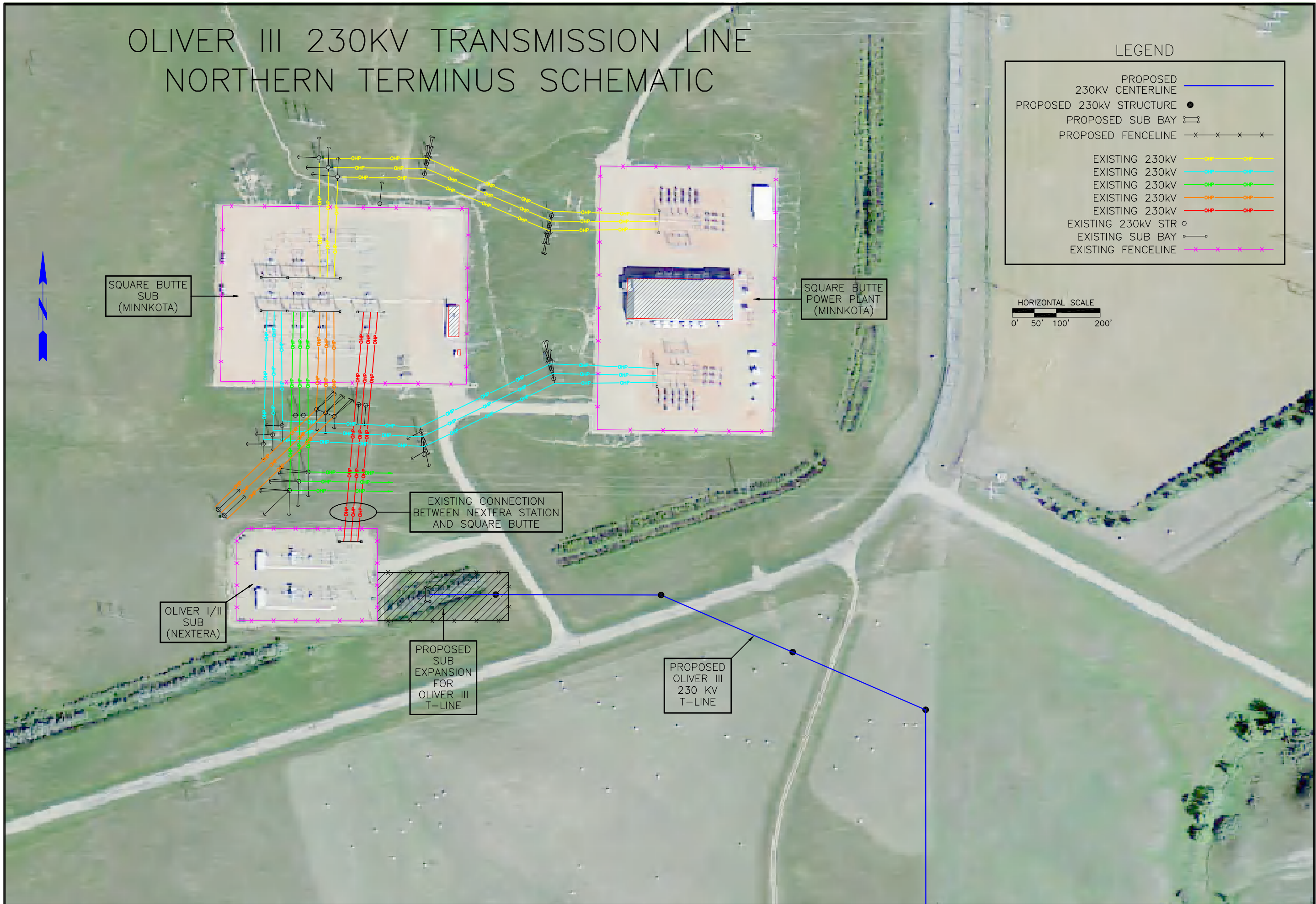
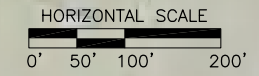


File: P:\P\Energy\Dakota\Contract 3173 and 3564 - Oliver, Crosby Wind
Contract 3564 Oliver III, IV and V GIS\Space\MOI
Oliver_1_Line_190710.mxd
Prepared By: [Name Redacted]

OLIVER III 230KV TRANSMISSION LINE NORTHERN TERMINUS SCHEMATIC

LEGEND

PROPOSED 230KV CENTERLINE	—
PROPOSED 230KV STRUCTURE	●
PROPOSED SUB BAY	⊞
PROPOSED FENCELINE	× × × ×
EXISTING 230KV	— (Yellow)
EXISTING 230KV	— (Cyan)
EXISTING 230KV	— (Green)
EXISTING 230KV	— (Orange)
EXISTING 230KV	— (Red)
EXISTING 230KV STR	○
EXISTING SUB BAY	⊞
EXISTING FENCELINE	× × × ×



SQUARE BUTTE SUB (MINNKOTA)

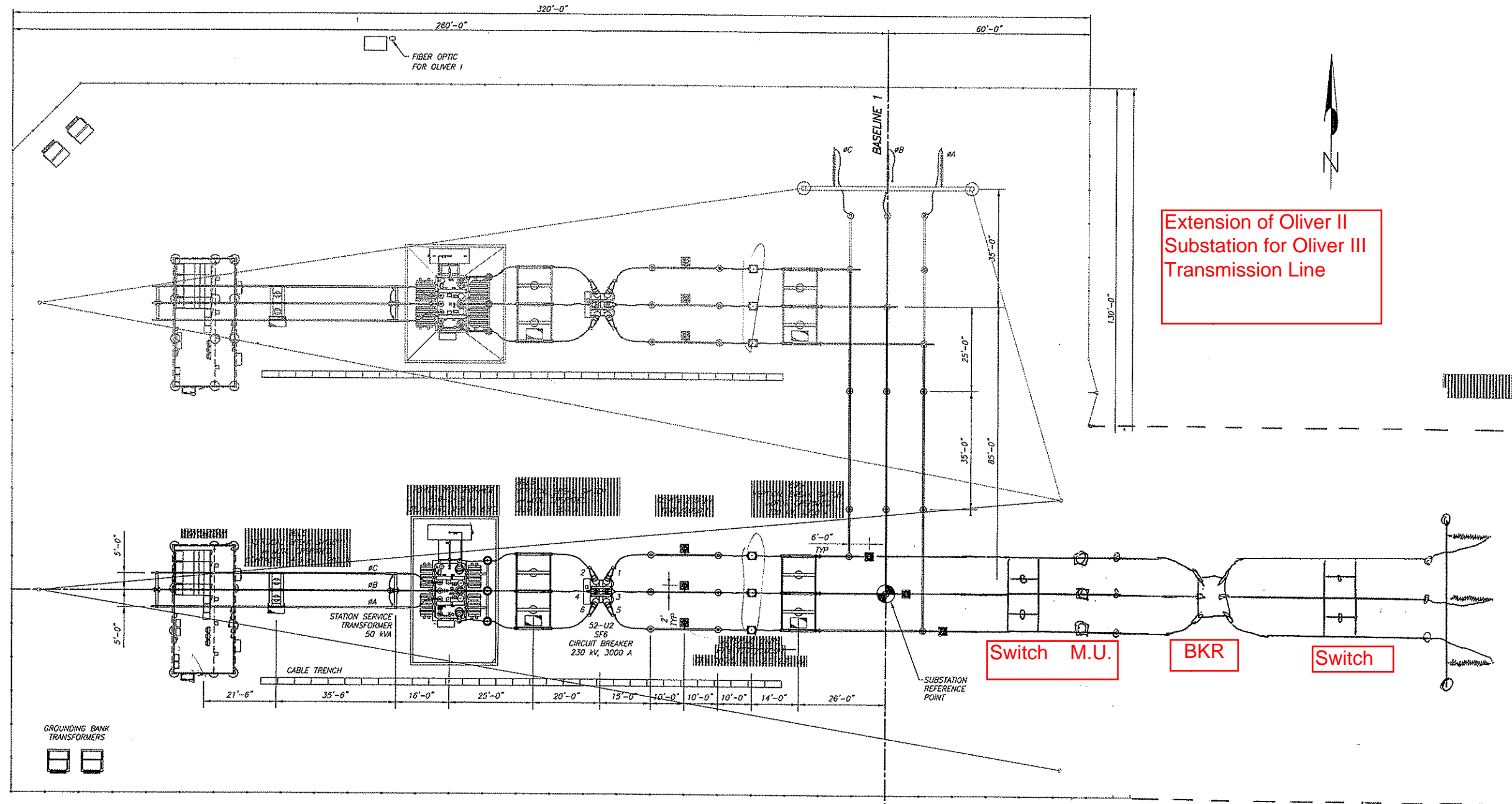
SQUARE BUTTE POWER PLANT (MINNKOTA)

EXISTING CONNECTION BETWEEN NEXTERA STATION AND SQUARE BUTTE

OLIVER I/II SUB (NEXTERA)

PROPOSED SUB EXPANSION FOR OLIVER III T-LINE

PROPOSED OLIVER III 230 KV T-LINE



Extension of Oliver II Substation for Oliver III Transmission Line

Oliver III 230 kV line
←-----

Switch M.U.

BKR

Switch

Extend fence east approximately 300 feet.
New control house or will use existing rack in current control house.

PLOTTER: 08/05/08 09:50:19 AM FILENAME: F:\proj\06-6222\dwg\62220001.dwg USER: cmcdmnl

PEAKPOWER
ENGINEERING

P.O. Box 340
Golden, Colorado 80402
(303) 462-1100 phone
(303) 462-2600 fax



REV	DESCRIPTION	ENG	DWN	CHK	DATE
A	FOR BID	PSF	PSF	JKP	02/12/07
B	FOR REVIEW	JDS	BITD	MDG	04/20/07
C	90% SUBMITTAL	JDS	REC	MDG	05/04/07
D	FOR CONSTRUCTION	JDS	GLJ	CDB	06/19/07
1	AS-BUILT	MDG	GLJ	PSF	03/20/08
2	RECORD DRAWING	WAZ	LAB	WAZ	01/30/09

ENG: J. SCOTT
DWN: P. FJELD
CHK: C. BLINCOV
DATE: 05/11/07

CLIENT/PROJECT: FPL ENERGY
OLIVER COUNTY PHASE II SUBSTATION

TITLE: GENERAL ARRANGEMENT

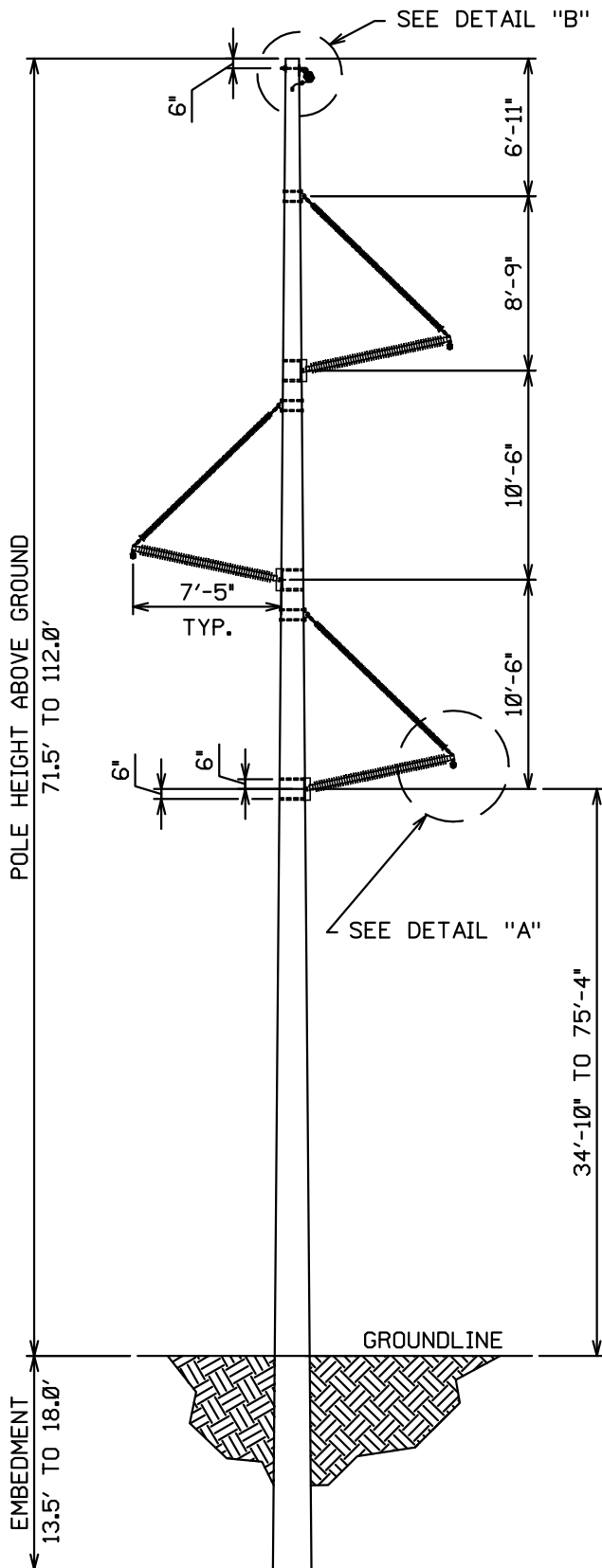
SCALE: 1/16"=1'-0"

DRAWING NUMBER: 62220001

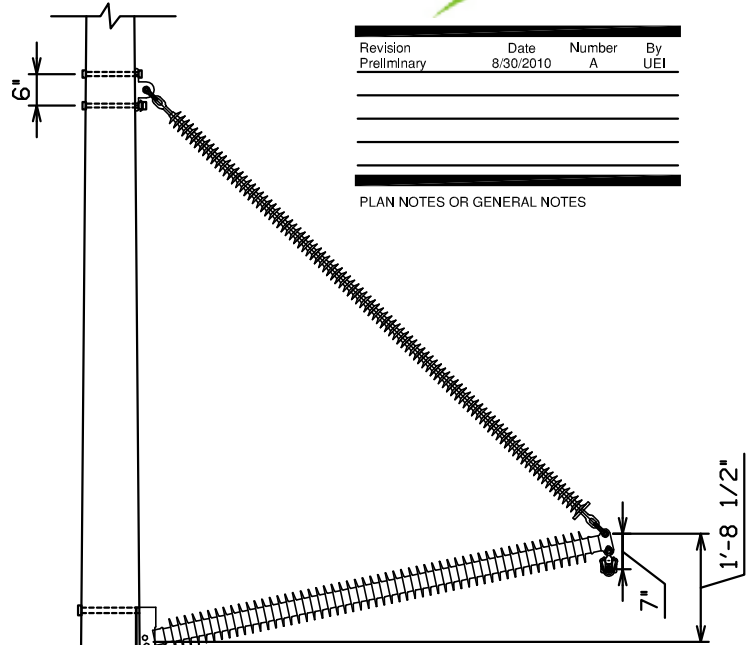
REVISION: 2

Revision	Date	Number	By
Preliminary	8/30/2010	A	UEI

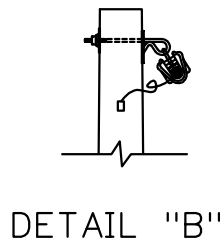
PLAN NOTES OR GENERAL NOTES



ELEVATION



DETAIL "A"



DETAIL "B"



Ulteig
Bismarck - Cedar Rapids - Denver - Detroit Lakes - Fargo - Minneapolis - Sioux Falls
3350 38th Ave S
Fargo, North Dakota 58104
Phone: 701.280.8500 Fax: 701.237.3191
Web: www.ulteig.com
Drawn By: MPE
Checked By: SPT
Approved By: SPT

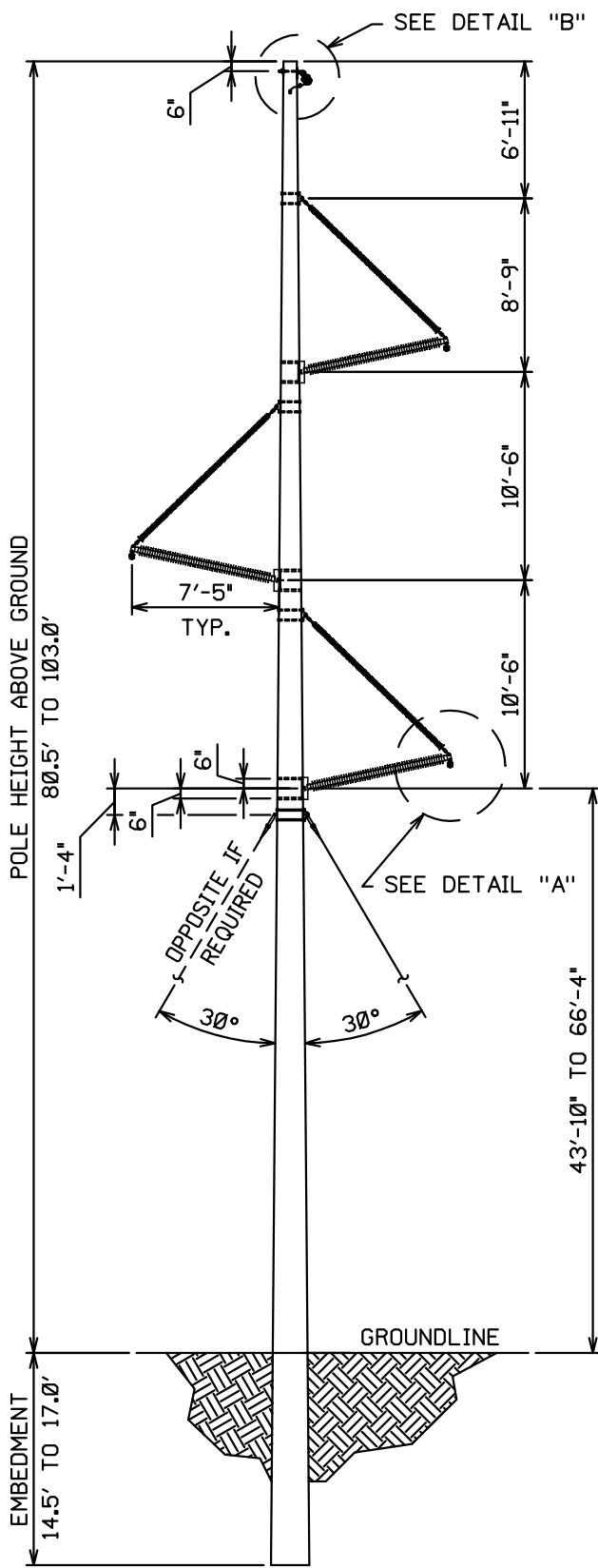
OLIVER III
230kV T-LINE
STRUCTURE CONFIGURATION
TANGENT
0°-0°30'

Project Number: 10.00121
Date Created: August 30, 2010
Sheets: 1 of 1

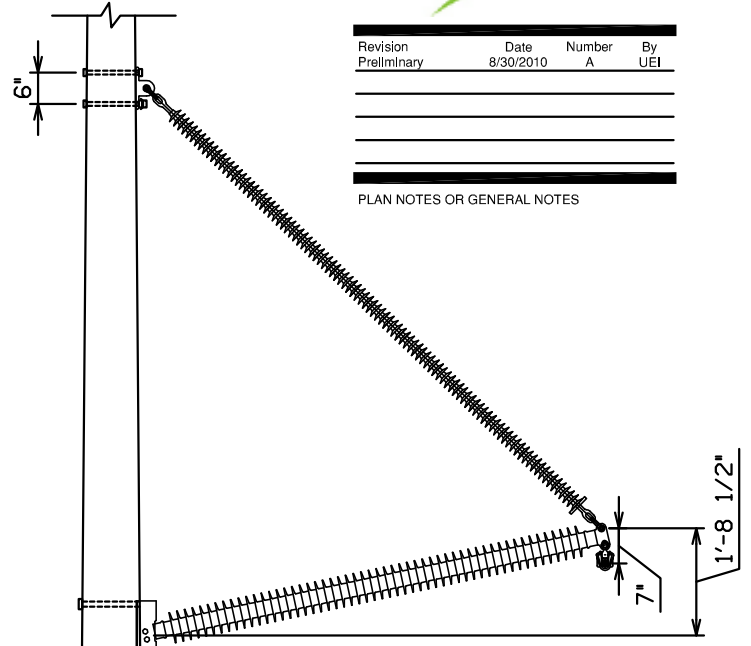
Dwg No: TAN-1-PSC

Revision	Date	Number	By
Preliminary	8/30/2010	A	UEI

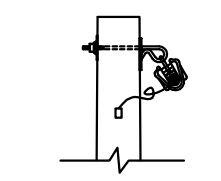
PLAN NOTES OR GENERAL NOTES



ELEVATION



DETAIL "A"



DETAIL "B"



Bismarck - Cedar Rapids - Denver - Detroit Lakes - Fargo - Minneapolis - Sioux Falls
3350 38th Ave S
Fargo, North Dakota 58104
Phone: 701.280.8500 Fax: 701.237.3191
Web: www.ulteig.com
Drawn By: MPE
Checked By: SPT
Approved By: SPT

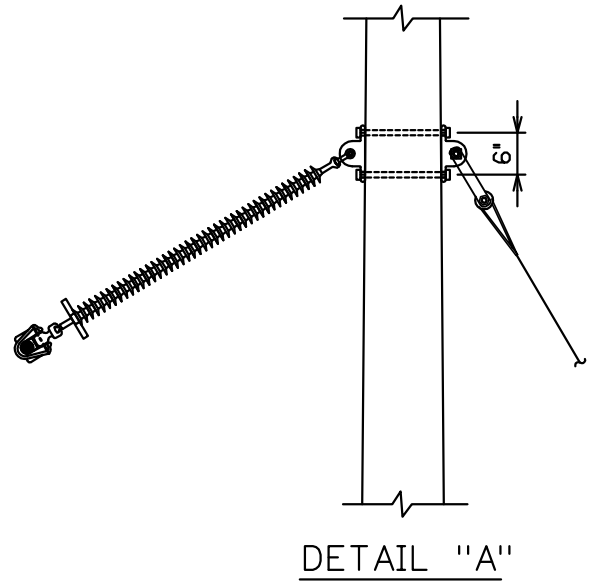
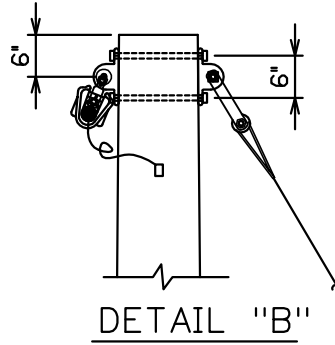
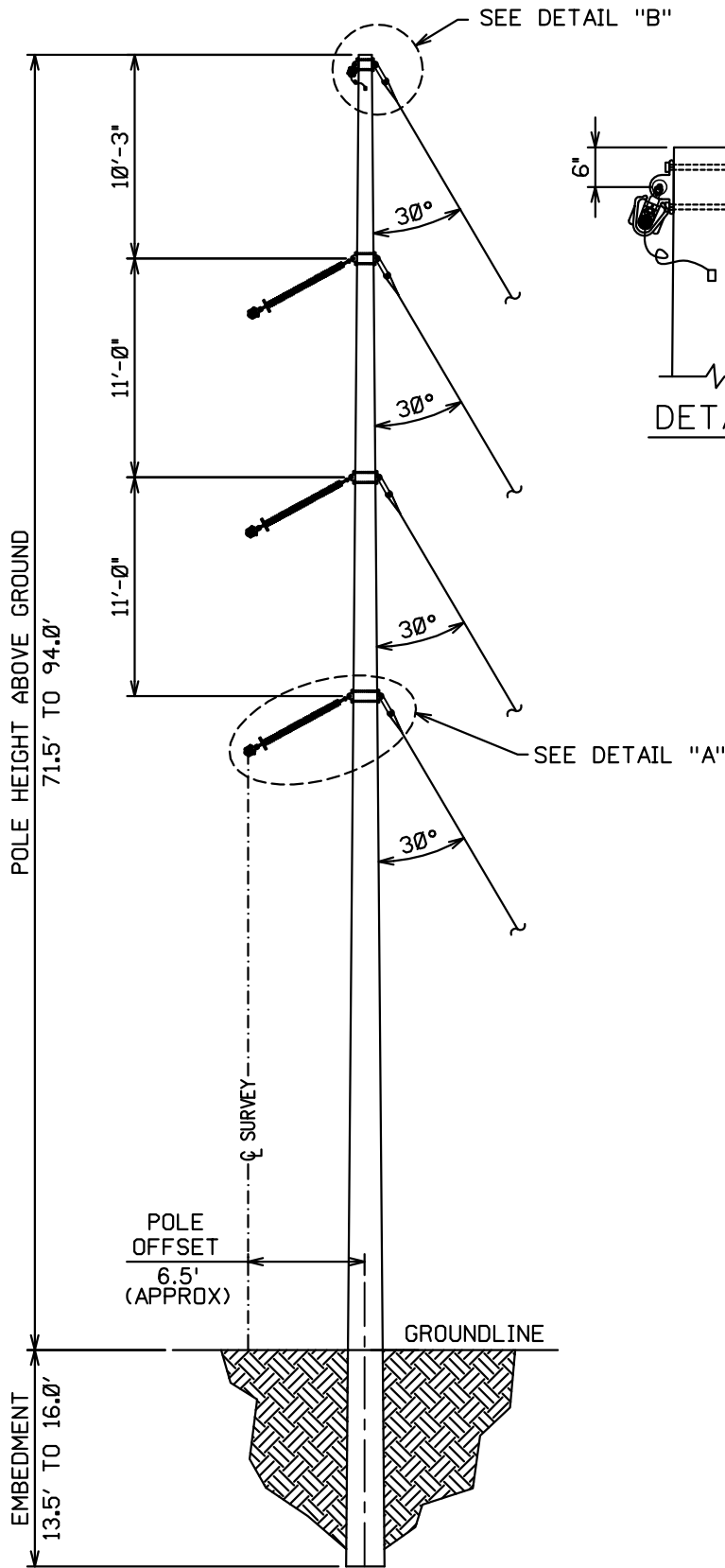
OLIVER III
230kV T-LINE
STRUCTURE CONFIGURATION
SMALL ANGLE
0°30'-2°

Project Number: 10.00121
Date Created: August 30, 2010
Sheets: 1 of 1

Dwg No: **SMALL ANG-1-PSC**

Revision	Date	Number	By
Preliminary	8/30/2010	A	UEI

PLAN NOTES OR GENERAL NOTES



ELEVATION



Bismarck - Cedar Rapids - Denver - Detroit Lakes - Fargo - Minneapolis - Sioux Falls
3350 38th Ave S
Fargo, North Dakota 58104
Phone: 701.280.8500 Fax: 701.237.3191
Web: www.ulteig.com
Drawn By: MPE
Checked By: SPT
Approved By: SPT

OLIVER III
230kV T-LINE
STRUCTURE CONFIGURATION
LARGE ANGLE STRUCTURE
20°-30°

Project Number: 10,00121

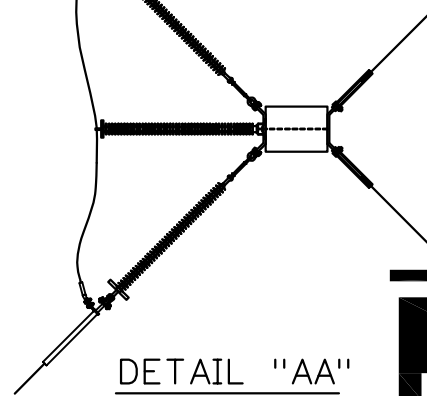
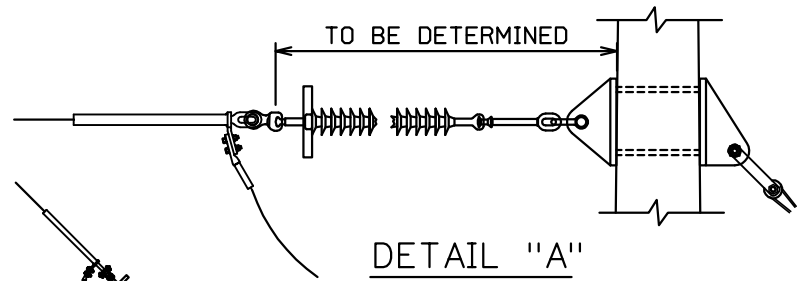
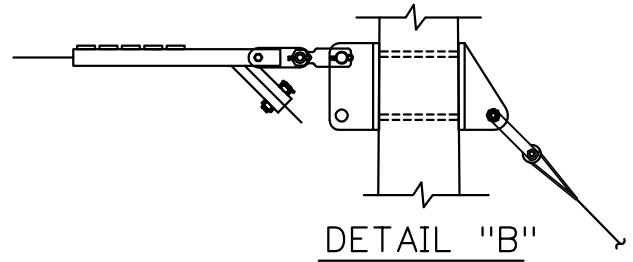
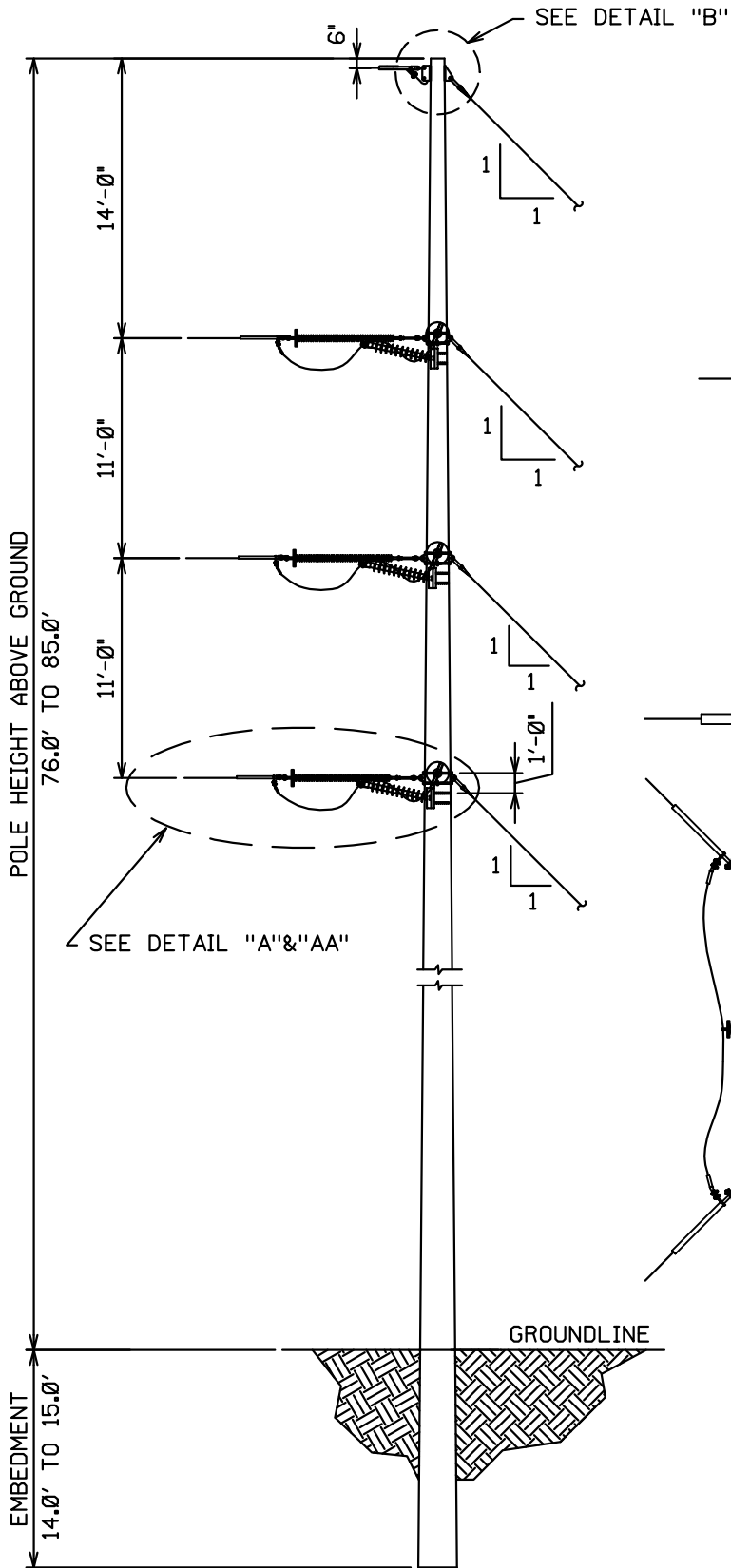
Date Created: August 30, 2010

Sheets: 1 of 1

Dwg No: LARGE ANG-1-PSC

Revision	Date	Number	By
Preliminary	8/30/2010	A	UEI

PLAN NOTES OR GENERAL NOTES



Bismarck - Cedar Rapids - Denver - Detroit Lakes - Fargo - Minneapolis - Sioux Falls
3350 38th Ave S
Fargo, North Dakota 58104
Phone: 701.280.8500 Fax: 701.237.3191
Web: www.ulteig.com
Drawn By: MPE
Checked By: SPT
Approved By: SPT

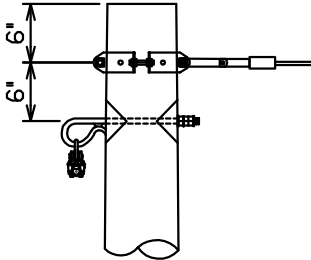
OLIVER III
230kV T-LINE
STRUCTURE CONFIGURATION
90 DEG. DE ANGLE
60°-90°

Project Number: 10.00121
Date Created: August 30, 2010
Sheets: 1 of 1

Dwg No: 90 DEG DE-PSC

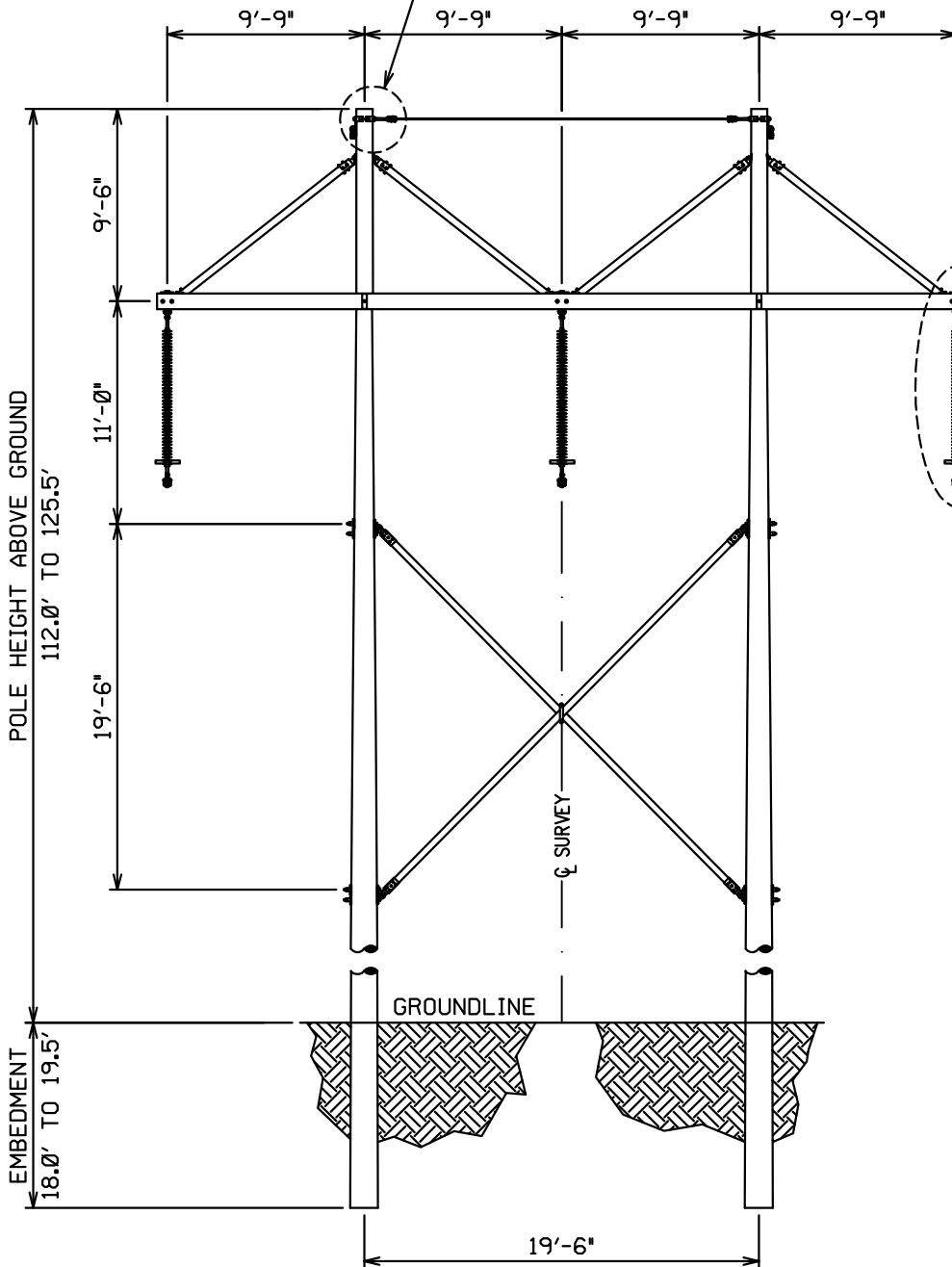
Revision	Date	Number	By
Preliminary	8/30/2010	A	UEI

PLAN NOTES OR GENERAL NOTES



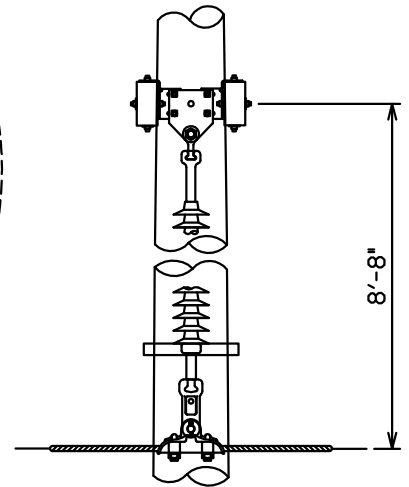
DETAIL "B"

SEE DETAIL "B"



ELEVATION

SEE DETAIL "A"



DETAIL "A"



Bismarck - Cedar Rapids - Denver - Detroit Lakes - Fargo - Minneapolis - Sioux Falls
3350 38th Ave S
Fargo, North Dakota 58104
Phone: 701.280.8500 Fax: 701.237.3191
Web: www.ulteig.com
Drawn By: MPE
Checked By: SPT
Approved By: SPT

OLIVER III
230kV T-LINE
STRUCTURE CONFIGURATION
TANGENT STRUCTURE
LAMINATED WOOD H-FRAME

Project Number: 10,00121

Date Created: August 30, 2010

Sheets: 1 of 1

Dwg No: HF TAN A-PSC

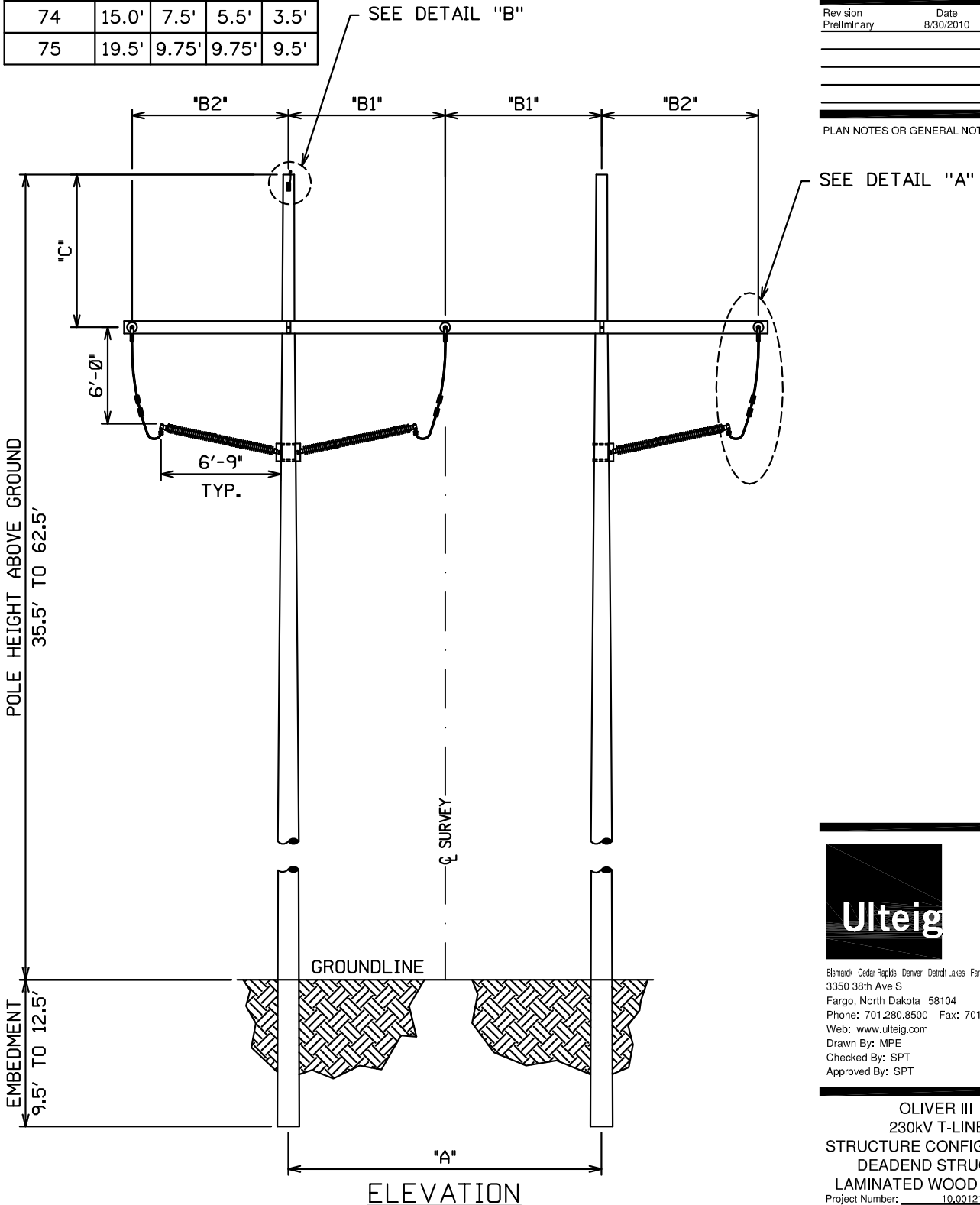
DIMENSION TABLE

STR NO.	"A"	"B1"	"B2"	"C"
72	19.5'	9.75'	9.75'	9.5'
73	15.0'	7.5'	7.5'	1.5'
74	15.0'	7.5'	5.5'	3.5'
75	19.5'	9.75'	9.75'	9.5'



Revision	Date	Number	By
Preliminary	8/30/2010	A	UEI

PLAN NOTES OR GENERAL NOTES

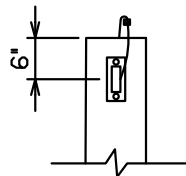


Bismarck - Cedar Rapids - Denver - Detroit Lakes - Fargo - Minneapolis - Sioux Falls
 3350 38th Ave S
 Fargo, North Dakota 58104
 Phone: 701.280.8500 Fax: 701.237.3191
 Web: www.ulteig.com
 Drawn By: MPE
 Checked By: SPT
 Approved By: SPT

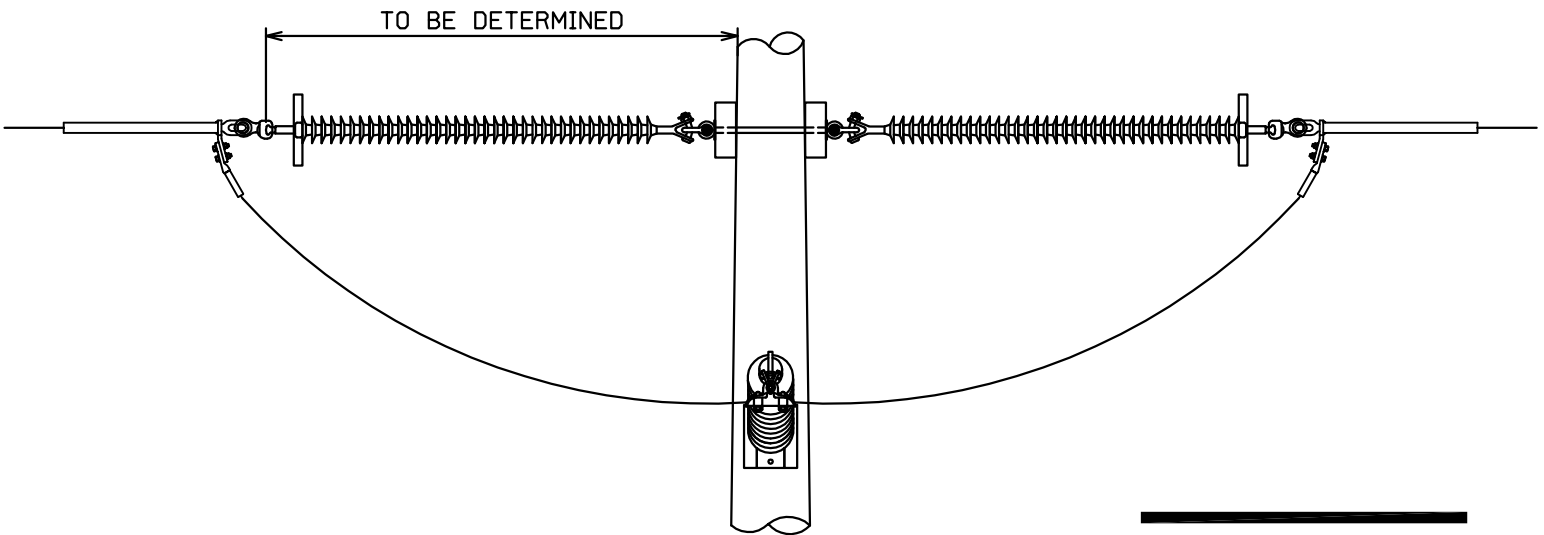
OLIVER III
 230kV T-LINE
 STRUCTURE CONFIGURATION
 DEADEND STRUCTURE
 LAMINATED WOOD H-FRAME
 Project Number: 10.00121
 Date Created: August 30, 2010
 Sheets: 1 of 2
 Dwg No: HF-DE-PSC

Revision	Date	Number	By
Preliminary	8/30/2010	A	UEI

PLAN NOTES OR GENERAL NOTES



DETAIL "B"



DETAIL "A"



Bismarck - Cedar Rapids - Denver - Detroit Lakes - Fargo - Minneapolis - Sioux Falls
3350 38th Ave S
Fargo, North Dakota 58104
Phone: 701.280.8500 Fax: 701.237.3191
Web: www.ulteig.com
Drawn By: MPE
Checked By: SPT
Approved By: SPT

OLIVER III
230kV T-LINE
STRUCTURE CONFIGURATION
DEADEND STRUCTURE
LAMINATED WOOD H-FRAME

Project Number: 10.00121

Date Created: August 30, 2010

Sheets: 2 of 2

Dwg No: HF-DE-PSC