

Brian R. Bjella
400 East Broadway, Suite 600
P.O. Box 2798
Bismarck, ND 58502-2798
701.223.6585
bbjella@crowleyfleck.com

October 27, 2010

RECEIVED

OCT 28 2010

PUBLIC SERVICE COMMISSION

Mr. Darrell Nitschke
Executive Director
NORTH DAKOTA PUBLIC
SERVICE COMMISSION
600 E. Boulevard Avenue, Dept. 408
Bismarck, ND 58505-0480

Dear Mr. Nitschke:

In re: Oliver Wind III, LLC
230 kv Transmission Line
Oliver and Morton Counties
Siting Application
Case No. PU-09-724

Enclosed for filing are original and ten copies of: (1) Exhibit #6 - Certification Relating to Order Provisions – Electric Transmission Line Siting, and (2) Late Filed Exhibit #3 – Plan and Profile Sheets for Permitting.

Please call should you have any questions.

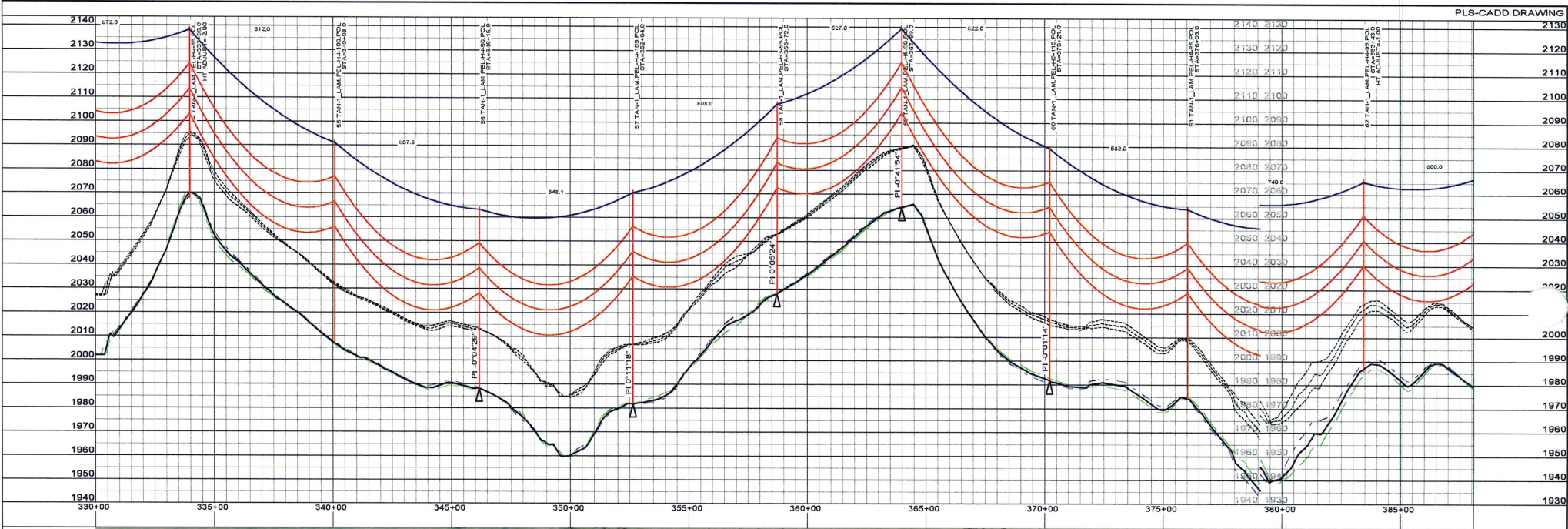
Very truly yours,


BRIAN R. BJELLA

bw
Enc.
cc: Mitch Armstrong (w/o enc.)

53 PU-09-724 Filed: 10/28/2010 Pages: 13
Late Filed Exhibit 3

NextEra Energy Resources, LLC



THIS DOCUMENT WAS ORIGINALLY ISSUED AND REVISION NUMBER 1 IN OCTOBER 2010 AND THE ORIGINAL DOCUMENTS ARE STORED AT ULTEIG ENGINEERS, INC. 3350 38TH S.W., FARGO, ND 58104

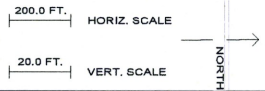


Ulteig
PLAN & PROFILE FOR PERMITTING
 10/25/10

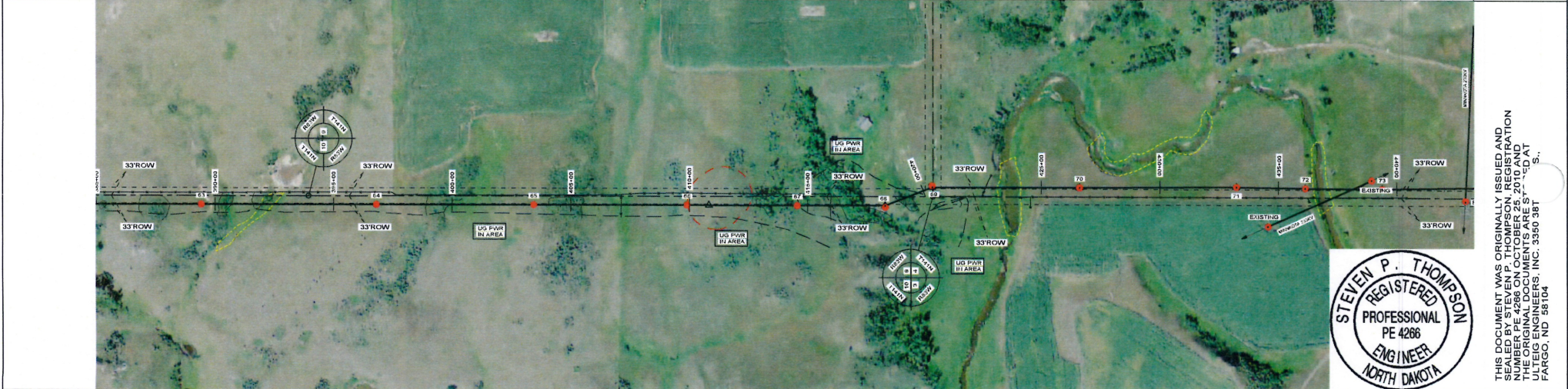
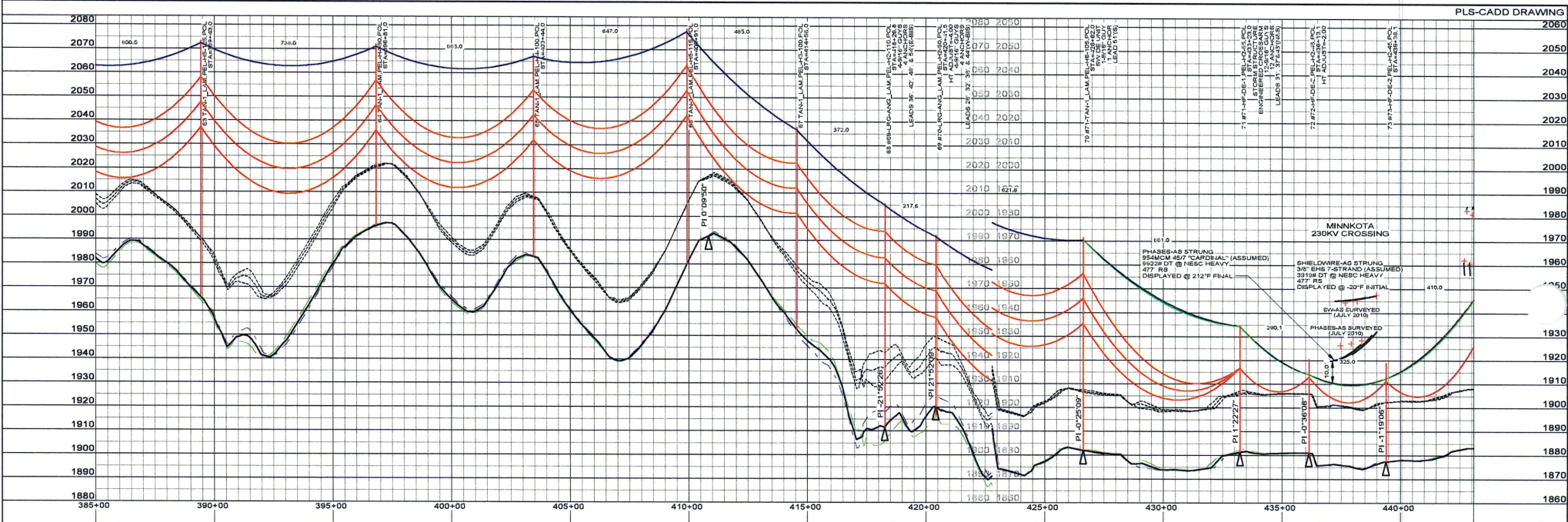


APPROVALS	DATE	DESIGN DATA
DRAWN BY: MPE	8/25/10	SHIELDWIRE: OPGW
DESIGNED BY: MPE	10/25/10	PLOTTING TEMP: -20°F INITIAL
CHECKED BY: SPT	10/25/10	CONDUCTOR: 954MCM 547 ACSR "CARDINAL"
APPROVED BY: SPT	10/25/10	PLOTTING TEMP: 212°F MAX SAG

NEXTERA ENERGY RESOURCES, LLC
OLIVER III PROJECT
230KV TRANSMISSION LINE



OLIVER III
 PP7



THIS DOCUMENT WAS ORIGINALLY ISSUED AND
 REVISION NUMBER 1 ON OCTOBER 28, 2010 AND
 THE ORIGINAL DOCUMENTS ARE STORED AT
 ULTEIG ENGINEERS, INC. 3350 38TH
 FARGO, ND 58104

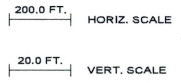


Ulteig
 PLAN & PROFILE
 FOR PERMITTING
 10/25/10

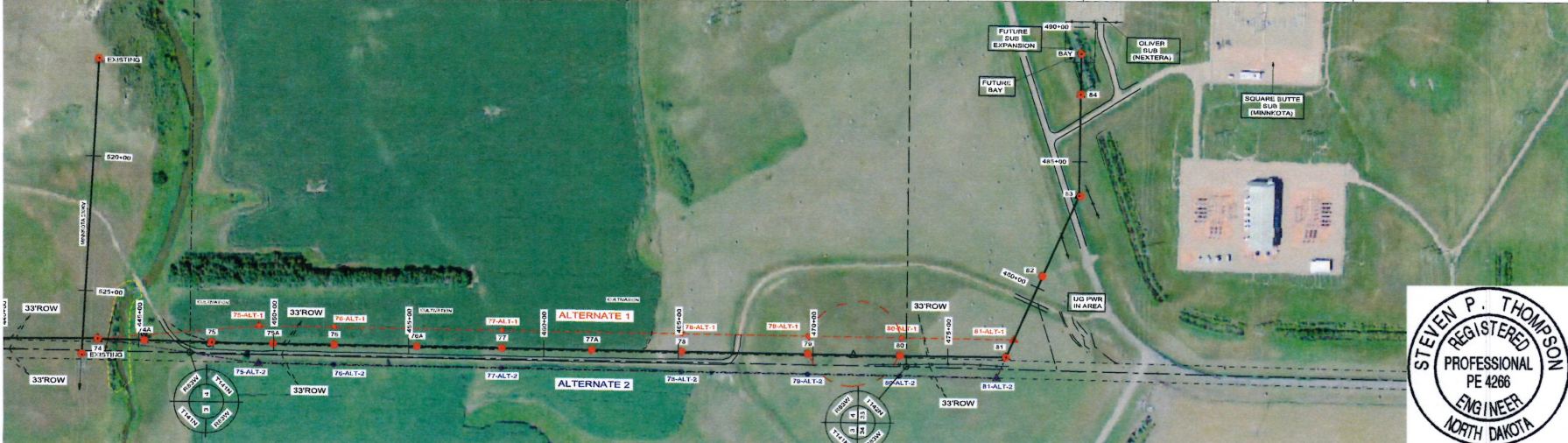
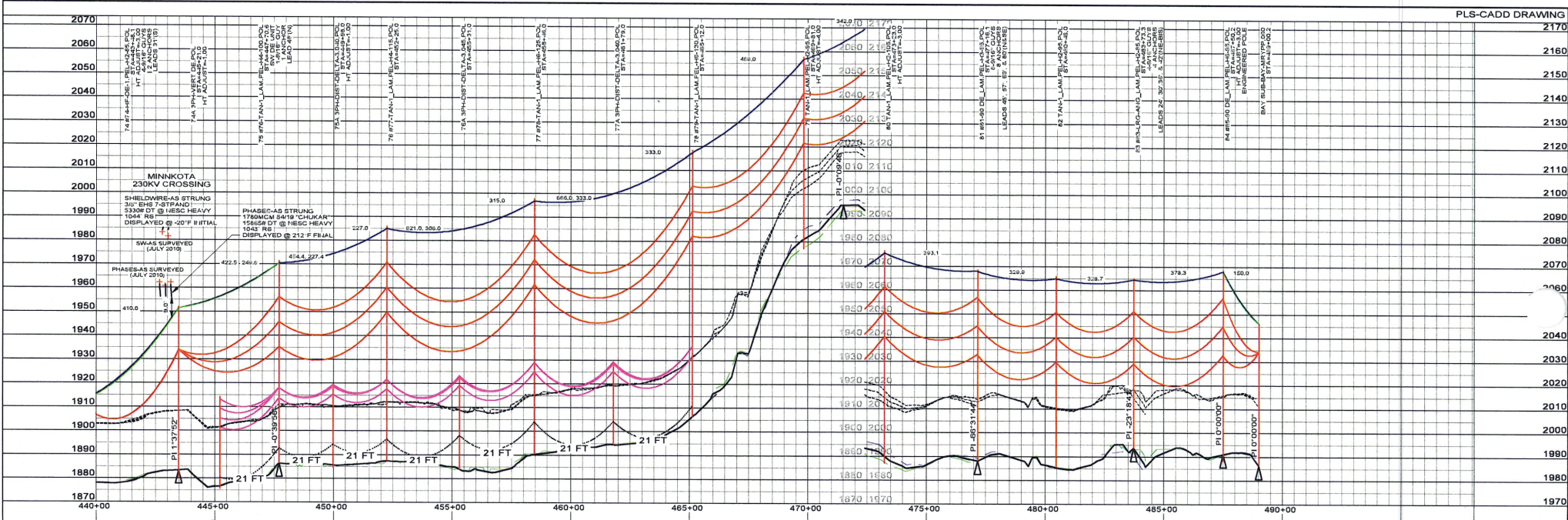


APPROVALS	DATE	DESIGN DATA
DRAWN BY: MPE	8/25/10	SHIELDWIRE: OPGW
DESIGNED BY: MPE	10/25/10	PLOTTING TEMP: -20°F INITIAL
CHECKED BY: SPT	10/25/10	CONDUCTOR: 954MCM 54/7 ACSR "CARDINAL"
APPROVED BY: SPT	10/25/10	PLOTTING TEMP: 212°F MAX SAG

**NEXTERA ENERGY
 RESOURCES, LLC**
 OLIVER III PROJECT
 230KV TRANSMISSION LINE



OLIVER III
 PP8

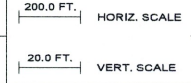


Ulteig
 PLAN & PROFILE
 FOR PERMITTING
 10/25/10



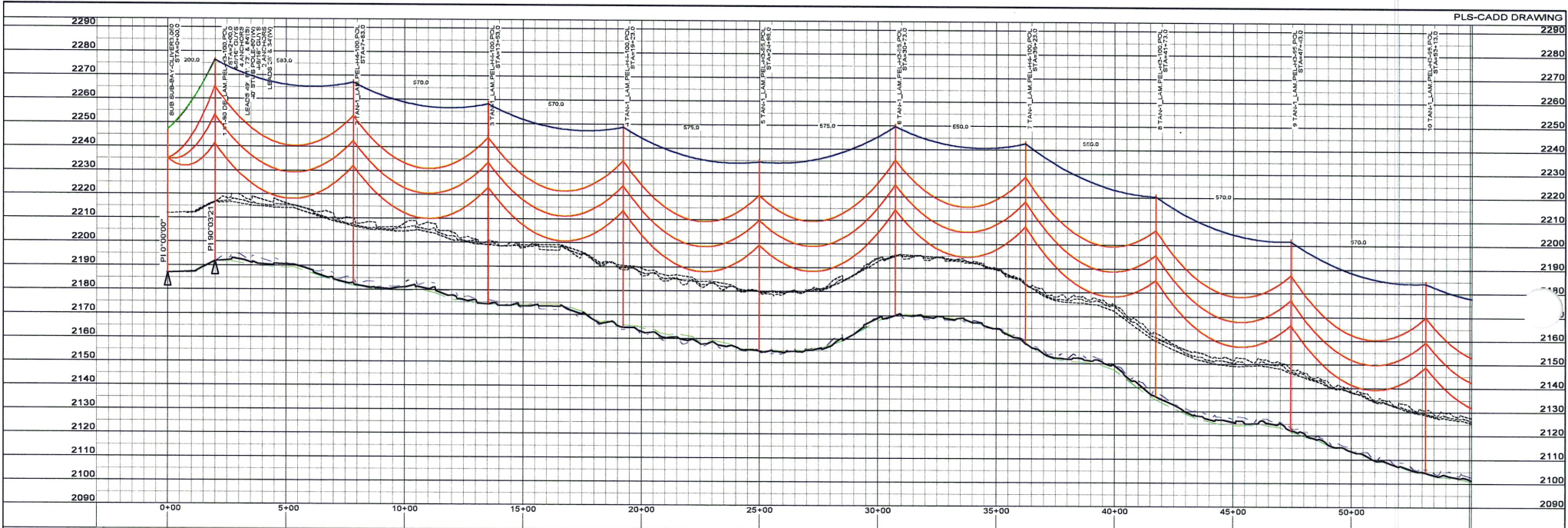
APPROVALS		DATE	DESIGN DATA
DRAWN BY: MPE		8/25/10	SHIELDWIRE: OPGW
DESIGNED BY: MPE		10/25/10	PLOTTING TEMP: -20°F INITIAL
CHECKED BY: SPT		10/25/10	CONDUCTOR: 954MCM 547 AC SR "CARDINAL"
APPROVED BY: SPT		10/25/10	PLOTTING TEMP: 212°F MAX SAG

**NEXTERA ENERGY
 RESOURCES, LLC**
 OLIVER III PROJECT
 230KV TRANSMISSION LINE



THIS DOCUMENT WAS ORIGINALLY ISSUED AND REVISION NUMBER 1 IN OCTOBER 2010 AND THE ORIGINAL DOCUMENTS ARE STORED AT ULTEIG ENGINEERS, INC. 3350 387 FARGO, ND 58104

OLIVER III
 PP9



SHIELDWIRE INFORMATION	
ONE-STEP (S) PER TOWER	
STRUCTURAL MEMBER	SECTION TENSILE NUMBER (SIN)
100701	40-125X3-085FAL2
100702	40-125X3-085FAL2
100703	40-125X3-085FAL2
100704	40-125X3-085FAL2
100705	40-125X3-085FAL2
100706	40-125X3-085FAL2
100707	40-125X3-085FAL2
100708	40-125X3-085FAL2
100709	40-125X3-085FAL2
100710	40-125X3-085FAL2
100711	40-125X3-085FAL2
100712	40-125X3-085FAL2
100713	40-125X3-085FAL2
100714	40-125X3-085FAL2
100715	40-125X3-085FAL2
100716	40-125X3-085FAL2
100717	40-125X3-085FAL2
100718	40-125X3-085FAL2
100719	40-125X3-085FAL2
100720	40-125X3-085FAL2
100721	40-125X3-085FAL2
100722	40-125X3-085FAL2
100723	40-125X3-085FAL2
100724	40-125X3-085FAL2
100725	40-125X3-085FAL2
100726	40-125X3-085FAL2
100727	40-125X3-085FAL2
100728	40-125X3-085FAL2
100729	40-125X3-085FAL2
100730	40-125X3-085FAL2
100731	40-125X3-085FAL2
100732	40-125X3-085FAL2
100733	40-125X3-085FAL2
100734	40-125X3-085FAL2
100735	40-125X3-085FAL2
100736	40-125X3-085FAL2
100737	40-125X3-085FAL2
100738	40-125X3-085FAL2
100739	40-125X3-085FAL2
100740	40-125X3-085FAL2
100741	40-125X3-085FAL2
100742	40-125X3-085FAL2
100743	40-125X3-085FAL2
100744	40-125X3-085FAL2
100745	40-125X3-085FAL2
100746	40-125X3-085FAL2
100747	40-125X3-085FAL2
100748	40-125X3-085FAL2
100749	40-125X3-085FAL2
100750	40-125X3-085FAL2

CONDUCTOR INFORMATION	
THREE 544MCM AC SR - CARDINAL	
STRUCTURAL MEMBER	SECTION TENSILE NUMBER (SIN)
100701	40-125X3-085FAL2
100702	40-125X3-085FAL2
100703	40-125X3-085FAL2
100704	40-125X3-085FAL2
100705	40-125X3-085FAL2
100706	40-125X3-085FAL2
100707	40-125X3-085FAL2
100708	40-125X3-085FAL2
100709	40-125X3-085FAL2
100710	40-125X3-085FAL2
100711	40-125X3-085FAL2
100712	40-125X3-085FAL2
100713	40-125X3-085FAL2
100714	40-125X3-085FAL2
100715	40-125X3-085FAL2
100716	40-125X3-085FAL2
100717	40-125X3-085FAL2
100718	40-125X3-085FAL2
100719	40-125X3-085FAL2
100720	40-125X3-085FAL2
100721	40-125X3-085FAL2
100722	40-125X3-085FAL2
100723	40-125X3-085FAL2
100724	40-125X3-085FAL2
100725	40-125X3-085FAL2
100726	40-125X3-085FAL2
100727	40-125X3-085FAL2
100728	40-125X3-085FAL2
100729	40-125X3-085FAL2
100730	40-125X3-085FAL2
100731	40-125X3-085FAL2
100732	40-125X3-085FAL2
100733	40-125X3-085FAL2
100734	40-125X3-085FAL2
100735	40-125X3-085FAL2
100736	40-125X3-085FAL2
100737	40-125X3-085FAL2
100738	40-125X3-085FAL2
100739	40-125X3-085FAL2
100740	40-125X3-085FAL2
100741	40-125X3-085FAL2
100742	40-125X3-085FAL2
100743	40-125X3-085FAL2
100744	40-125X3-085FAL2
100745	40-125X3-085FAL2
100746	40-125X3-085FAL2
100747	40-125X3-085FAL2
100748	40-125X3-085FAL2
100749	40-125X3-085FAL2
100750	40-125X3-085FAL2

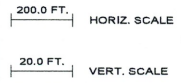
ROUGHRISE/ELECTRIC COOP - 3PH 120V	
STRUCTURAL MEMBER	SECTION TENSILE NUMBER (SIN)
100701	40-125X3-085FAL2
100702	40-125X3-085FAL2
100703	40-125X3-085FAL2
100704	40-125X3-085FAL2
100705	40-125X3-085FAL2
100706	40-125X3-085FAL2
100707	40-125X3-085FAL2
100708	40-125X3-085FAL2
100709	40-125X3-085FAL2
100710	40-125X3-085FAL2
100711	40-125X3-085FAL2
100712	40-125X3-085FAL2
100713	40-125X3-085FAL2
100714	40-125X3-085FAL2
100715	40-125X3-085FAL2
100716	40-125X3-085FAL2
100717	40-125X3-085FAL2
100718	40-125X3-085FAL2
100719	40-125X3-085FAL2
100720	40-125X3-085FAL2
100721	40-125X3-085FAL2
100722	40-125X3-085FAL2
100723	40-125X3-085FAL2
100724	40-125X3-085FAL2
100725	40-125X3-085FAL2
100726	40-125X3-085FAL2
100727	40-125X3-085FAL2
100728	40-125X3-085FAL2
100729	40-125X3-085FAL2
100730	40-125X3-085FAL2
100731	40-125X3-085FAL2
100732	40-125X3-085FAL2
100733	40-125X3-085FAL2
100734	40-125X3-085FAL2
100735	40-125X3-085FAL2
100736	40-125X3-085FAL2
100737	40-125X3-085FAL2
100738	40-125X3-085FAL2
100739	40-125X3-085FAL2
100740	40-125X3-085FAL2
100741	40-125X3-085FAL2
100742	40-125X3-085FAL2
100743	40-125X3-085FAL2
100744	40-125X3-085FAL2
100745	40-125X3-085FAL2
100746	40-125X3-085FAL2
100747	40-125X3-085FAL2
100748	40-125X3-085FAL2
100749	40-125X3-085FAL2
100750	40-125X3-085FAL2

Ulteig PLAN & PROFILE FOR PERMITTING 10/25/10



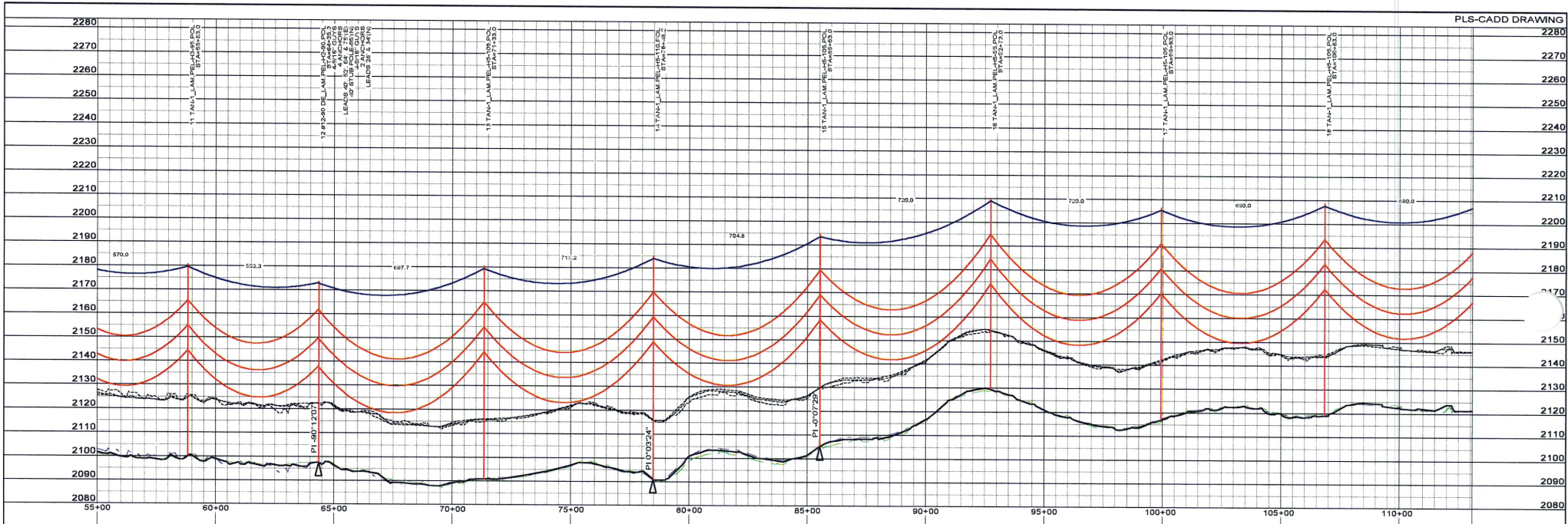
APPROVALS	DATE	DESIGN DATA
DRAWN BY: MPE	8/25/10	SHIELDWIRE: OPGW
DESIGNED BY: MPE	10/25/10	PLOTTING TEMP: -20°F INITIAL
CHECKED BY: SPT	10/25/10	CONDUCTOR: 854MCM 547 AC SR "CARDINAL"
APPROVED BY: SPT	10/25/10	PLOTTING TEMP: 212°F MAX SAG

NEXTERA ENERGY RESOURCES, LLC
OLIVER III PROJECT
230KV TRANSMISSION LINE



THIS DOCUMENT WAS ORIGINALLY ISSUED AND SEALED BY STEVEN P. THOMPSON. REGISTRATION NUMBER: ND 4266. THE ORIGINAL DOCUMENTS ARE STORED AT ULTEIG ENGINEERS, INC. 3350 38TH AVENUE S.W. FARGO, ND 58104

OLIVER III PP1



THIS DOCUMENT WAS ORIGINALLY ISSUED AND SEALED BY STEVEN P. THOMPSON, REGISTRATION NO. 4266, IN THE YEAR 2010. ANY REVISIONS TO THE ORIGINAL DOCUMENTS ARE SHOWN AT ULTEIG ENGINEERS, INC. 3350 38T FARGO, ND 58104



Ulteig PLAN & PROFILE FOR PERMITTING 10/25/10



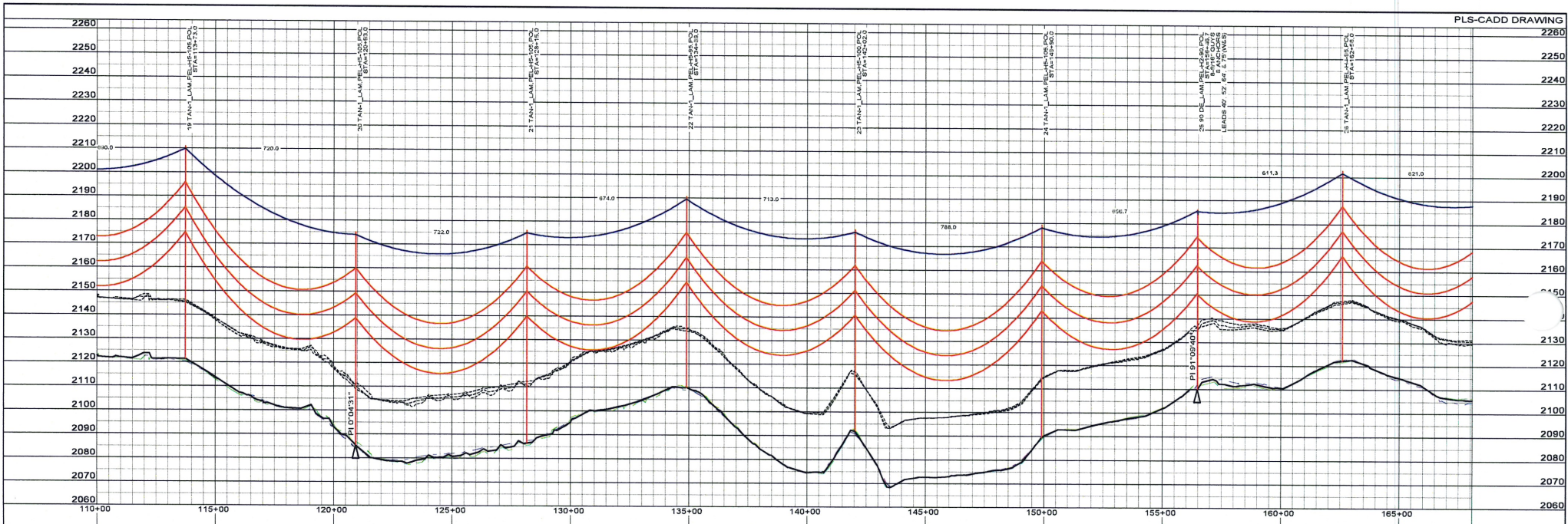
APPROVALS	DATE
DRAWN BY: MPE	8/25/10
DESIGNED BY: MPE	10/25/10
CHECKED BY: SPT	10/25/10
APPROVED BY: SPT	10/25/10

DESIGN DATA
SHIELDWIRE: OPGW
PLOTTING TEMP: -20°F INITIAL
CONDUCTOR: 954MCM 54/7 ACSR "CARDINAL"
PLOTTING TEMP: 212°F MAX SAG

NEXTERA ENERGY RESOURCES, LLC
OLIVER III PROJECT
230KV TRANSMISSION LINE

200.0 FT. HORIZ. SCALE
 20.0 FT. VERT. SCALE
 NORTH

OLIVER III
 PP2



Ulteig
PLAN & PROFILE FOR PERMITTING
 10/25/10



APPROVALS		DATE	DESIGN DATA
DRAWN BY: MPE		8/25/10	SHIELDWIRE: OPGW
DESIGNED BY: MPE		10/25/10	PLOTTING TEMP: -20°F INITIAL
CHECKED BY: SPT		10/25/10	CONDUCTOR: 954MCM 547 ACSR "CARDINAL"
APPROVED BY: SPT		10/25/10	PLOTTING TEMP: 212°F MAX SAG

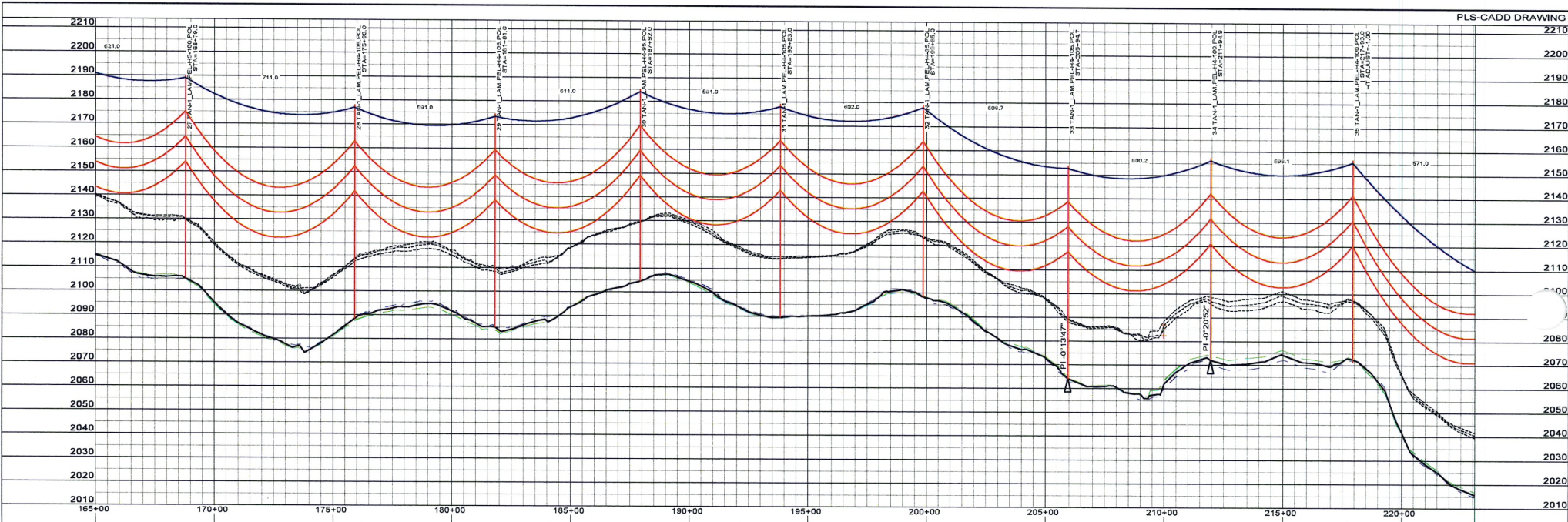
NEXTERA ENERGY RESOURCES, LLC
OLIVER III PROJECT
230KV TRANSMISSION LINE

200.0 FT. HORIZ. SCALE
 NORTH
 20.0 FT. VERT. SCALE



THIS DOCUMENT WAS ORIGINALLY ISSUED AND SEALED BY STEVEN P. THOMPSON, REGISTRATION NO. 4266, NORTH DAKOTA. THE ORIGINAL DOCUMENTS ARE STORED AT ULTEIG ENGINEERS, INC. 3350 38T FARGO, ND 58104

OLIVER III
 PP3



THIS DOCUMENT WAS ORIGINALLY ISSUED AND DESIGNATED AS PROJECT NUMBER 230V AND PROJECT NUMBER PE 4286 IN OCTOBER 2008 AND THE ORIGINAL DOCUMENTS ARE STORED AT ULTEIG ENGINEERS, INC. 3350 38TH AVENUE S.E., FARGO, ND 58104

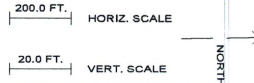


Ulteig
 PLAN & PROFILE
 FOR PERMITTING
 10/25/10

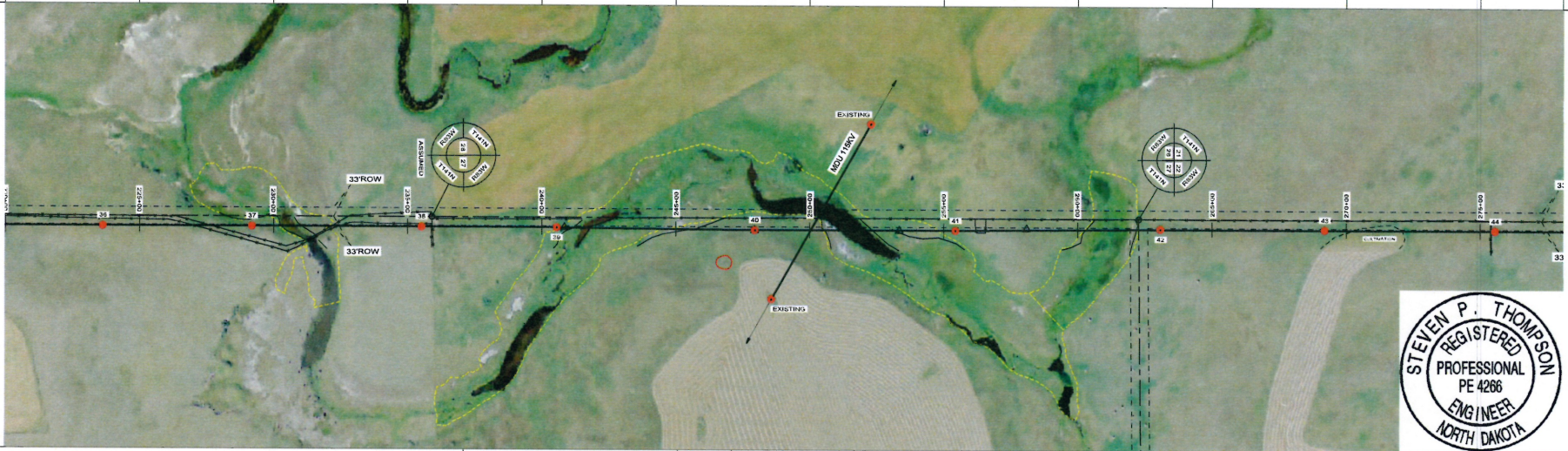
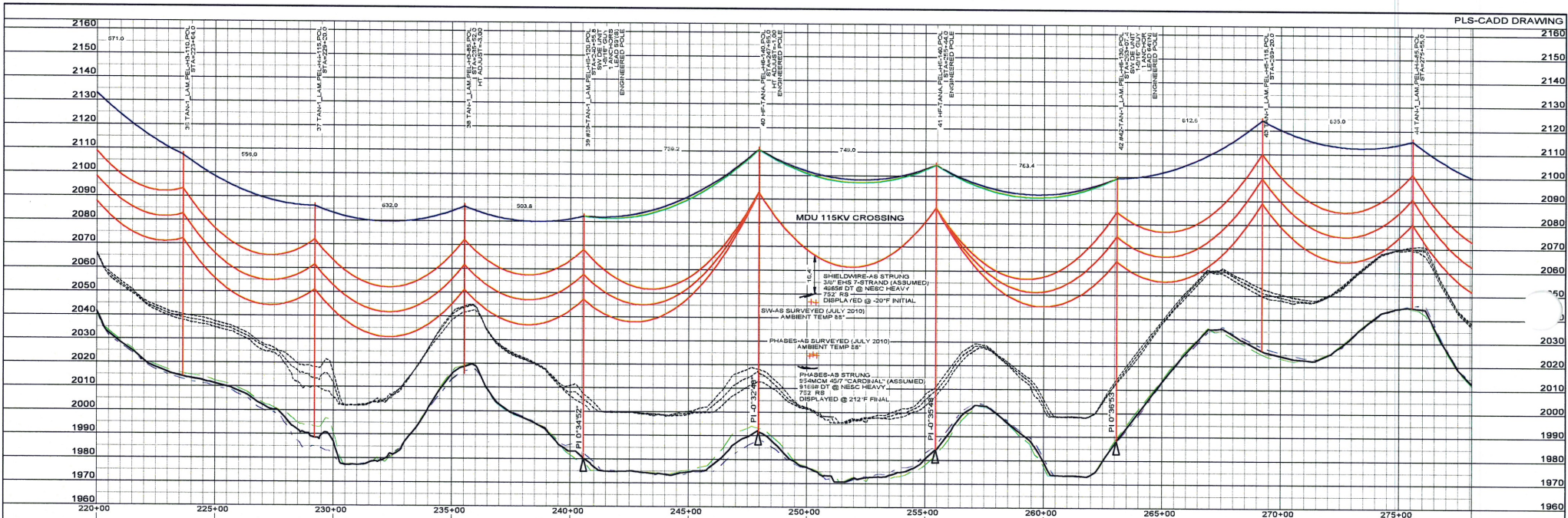


APPROVALS		DATE	DESIGN DATA
DRAWN BY: MPE		8/25/10	SHIELDWIRE: OPGW
DESIGNED BY: MPE		10/25/10	PLOTTING TEMP: -30°F INITIAL
CHECKED BY: SPT		10/25/10	CONDUCTOR: 954MCM 54/7 ACSR "CARDINAL"
APPROVED BY: SPT		10/25/10	PLOTTING TEMP: 212°F MAX SAG

**NEXTERA ENERGY
 RESOURCES, LLC**
 OLIVER III PROJECT
 230KV TRANSMISSION LINE



OLIVER III
 PP4



THIS DOCUMENT WAS ORIGINALLY ISSUED AND
 NAMED BY STEVEN P. THOMPSON. REGISTRATION
 NUMBERS FOR STEVEN P. THOMPSON AND
 THE ORIGINAL DOCUMENTS ARE 57114D AT
 ULTEIG ENGINEERS, INC. 3350 38T
 FARGO, ND 58104

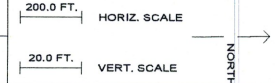


Ulteig
 PLAN & PROFILE
 FOR PERMITTING
 10/25/10

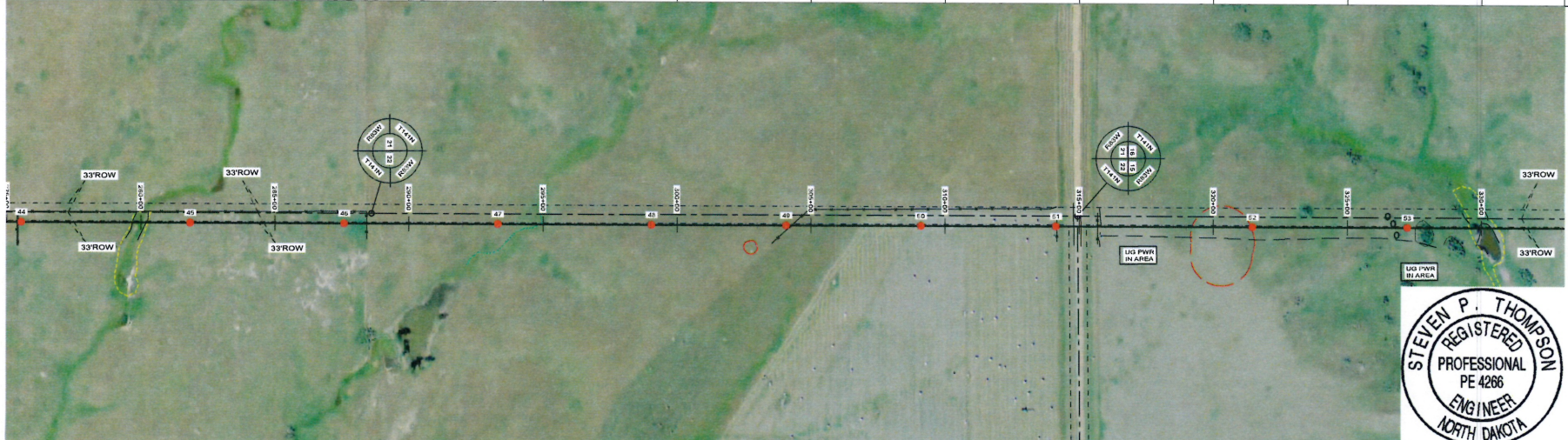
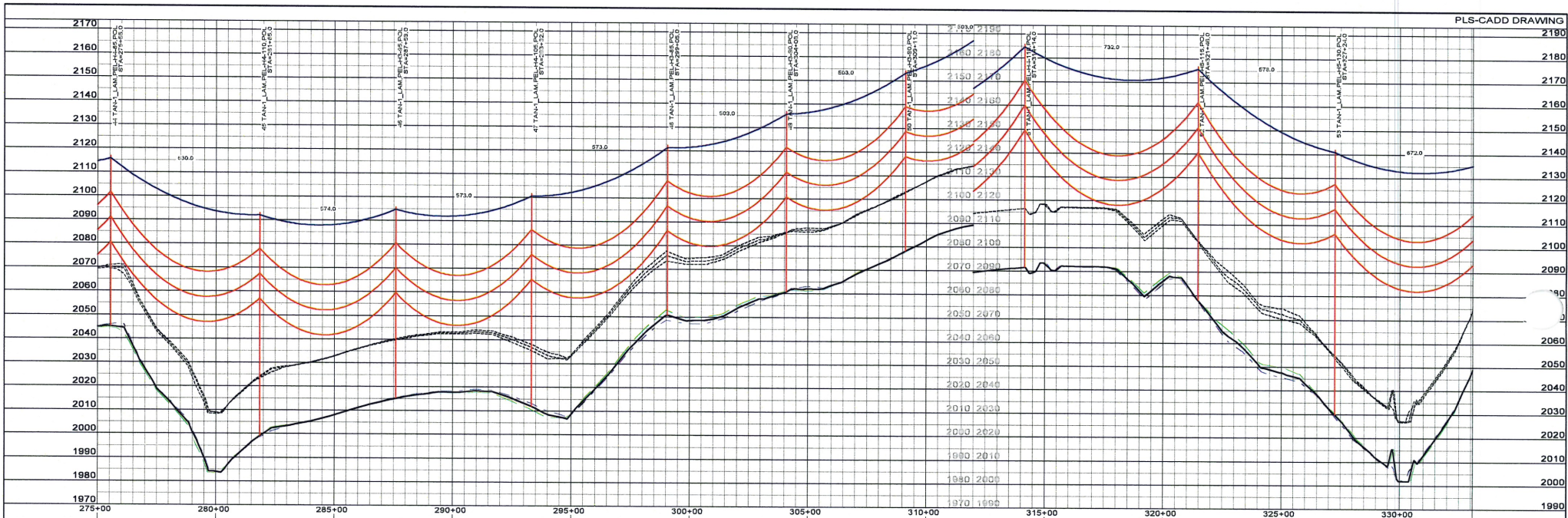


APPROVALS		DATE	DESIGN DATA
DRAWN BY: MPE		8/25/10	SHIELDWIRE: OPGW
DESIGNED BY: MPE		10/25/10	PLOTTING TEMP: -20°F INITIAL
CHECKED BY: SPT		10/25/10	CONDUCTOR: 854MCM 54/7 AC SR
APPROVED BY: SPT		10/25/10	"CARDINAL" PLOTTING TEMP: 212°F MAX SAG

**NEXTERA ENERGY
 RESOURCES, LLC**
 OLIVER III PROJECT
 230KV TRANSMISSION LINE



OLIVER III
 PP5



THIS DOCUMENT WAS ORIGINALLY ISSUED AND SEALED BY STEVEN P. THOMPSON, REGISTRATION NO. 4286, FOR THE PROJECT DATED 10/25/10. THE ORIGINAL DOCUMENTS ARE STORED AT ULTEIG ENGINEERS, INC. 3350 38TH FARGO, ND 58104



Ulteig
PLAN & PROFILE FOR PERMITTING
 10/25/10

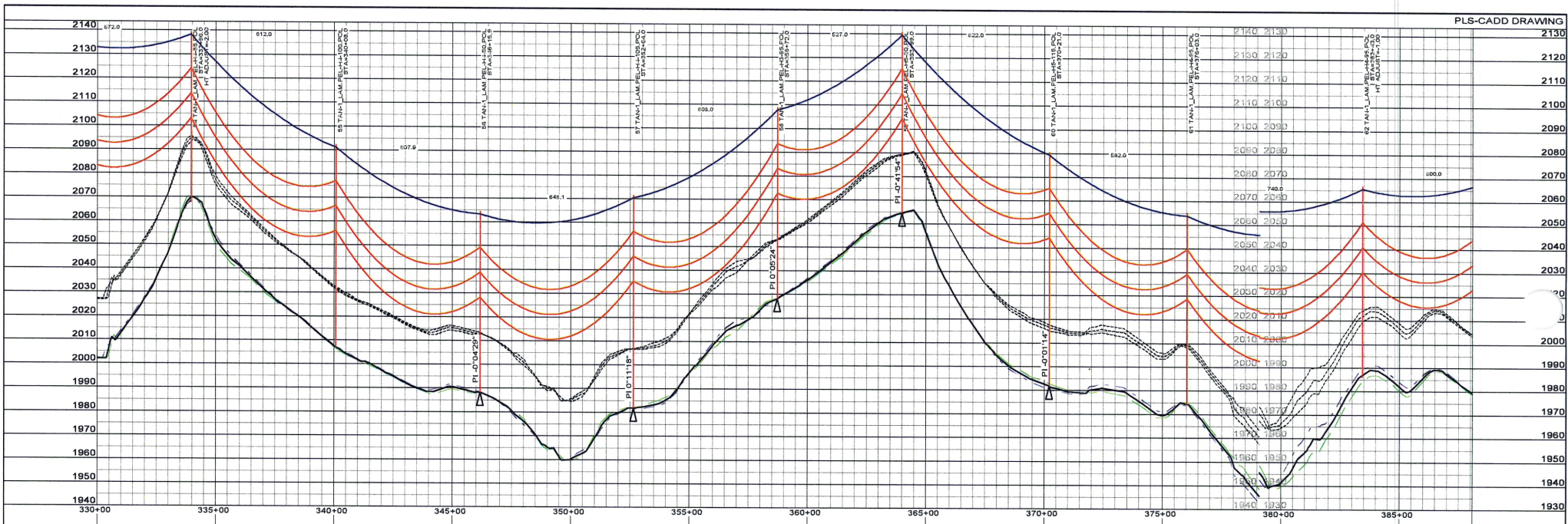


APPROVALS	DATE	DESIGN DATA
DRAWN BY: MPE	8/25/10	SHIELDWIRE: OPGW
DESIGNED BY: MPE	10/25/10	PLOTTING TEMP: -20°F INITIAL
CHECKED BY: SPT	10/25/10	CONDUCTOR: 954MCM 54/7 ACSR "CARDINAL"
APPROVED BY: SPT	10/25/10	PLOTTING TEMP: 212°F MAX SAG

NEXTERA ENERGY RESOURCES, LLC
OLIVER III PROJECT
230KV TRANSMISSION LINE



OLIVER III
 PP6



THIS DOCUMENT WAS ORIGINALLY ISSUED AND SEALED BY STEVEN P. THOMPSON, REGISTRATION NO. 4286. THE ORIGINAL DOCUMENTS ARE STORED AT ULTEIG ENGINEERS, INC. 3350 38TH AVE. S.W., FARGO, ND 58104



Ulteig
 PLAN & PROFILE FOR PERMITTING
 10/25/10

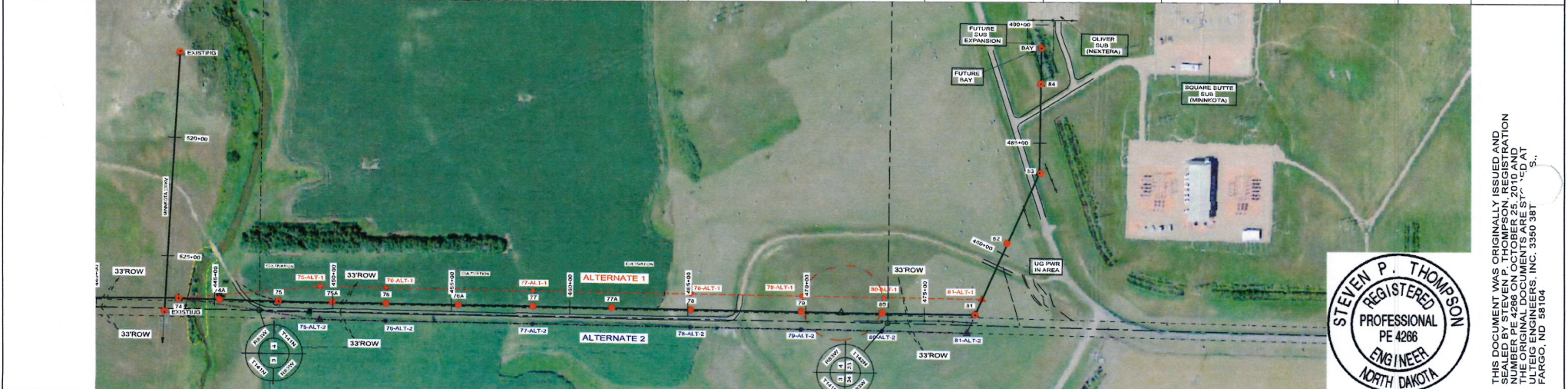
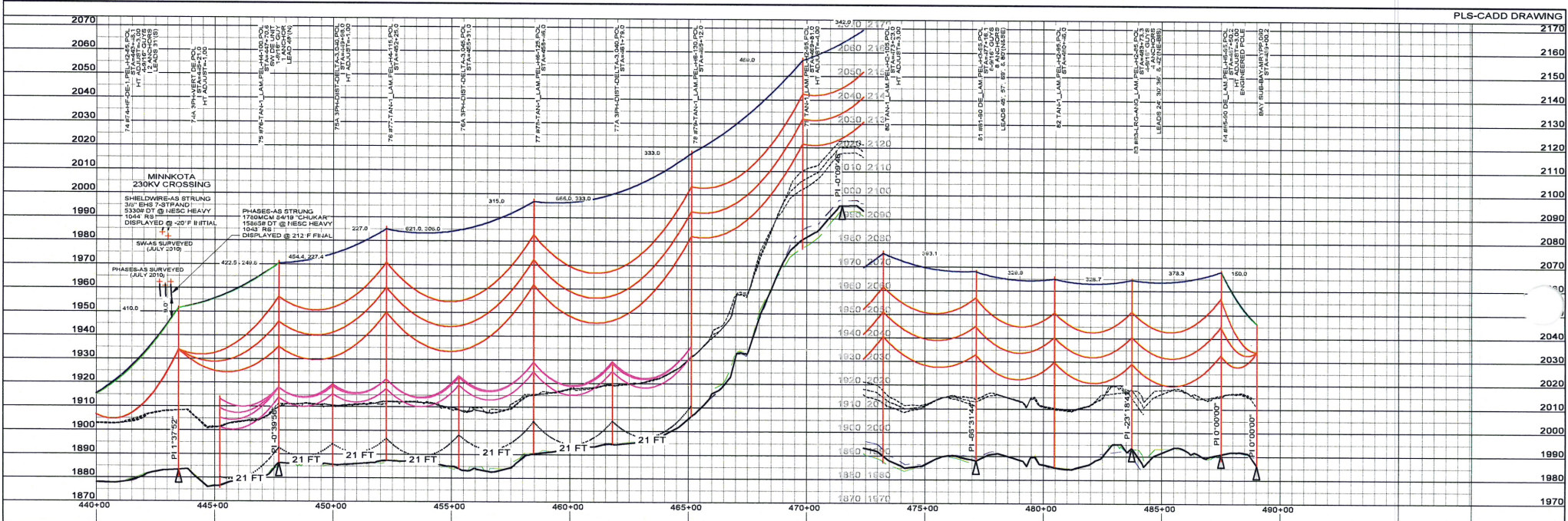


APPROVALS		DATE	DESIGN DATA
DRAWN BY: MPE		8/25/10	SHIELDWIRE: OPGW
DESIGNED BY: MPE		10/25/10	PLOTTING TEMP: -20°F INITIAL
CHECKED BY: SPT		10/25/10	CONDUCTOR: 954MCM 54/7 ACSR "CARDINAL"
APPROVED BY: SPT		10/25/10	PLOTTING TEMP: 212°F MAX SAG

NEXTERA ENERGY RESOURCES, LLC
 OLIVER III PROJECT
 230KV TRANSMISSION LINE



OLIVER III PP7



Ulteig PLAN & PROFILE FOR PERMITTING 10/25/10



APPROVALS		DATE	DESIGN DATA
DRAWN BY:	MPE	8/25/10	SHIELDWIRE: OPGW
DESIGNED BY:	MPE	10/25/10	PLOTTING TEMP: -20°F INITIAL
CHECKED BY:	SPT	10/25/10	CONDUCTOR: 954MCM 54/7 ACSR "CARDINAL"
APPROVED BY:	SPT	10/25/10	PLOTTING TEMP: 212°F MAX SAG

NEXTERA ENERGY RESOURCES, LLC
OLIVER III PROJECT
230KV TRANSMISSION LINE

200.0 FT. HORIZ. SCALE
 20.0 FT. VERT. SCALE



THIS DOCUMENT WAS ORIGINALLY ISSUED AND SEALED BY STEVEN P. THOMPSON, REGISTRATION NO. 4266 IN THE STATE OF NORTH DAKOTA. THE ORIGINAL DOCUMENTS ARE STORED AT ULTEIG ENGINEERS, INC., 3350 38TH AVENUE S.W., FARGO, ND 58104

OLIVER III
 PP9