
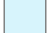




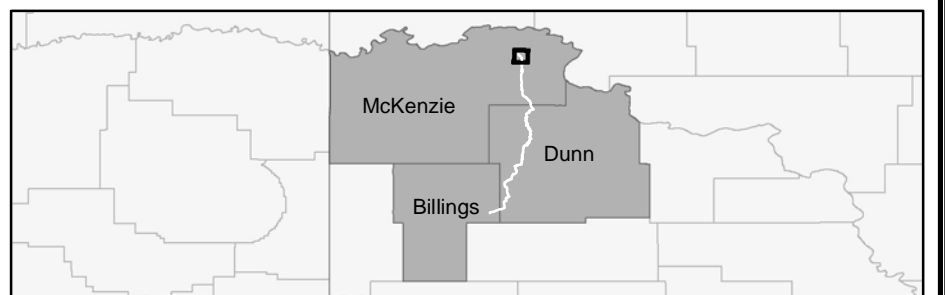



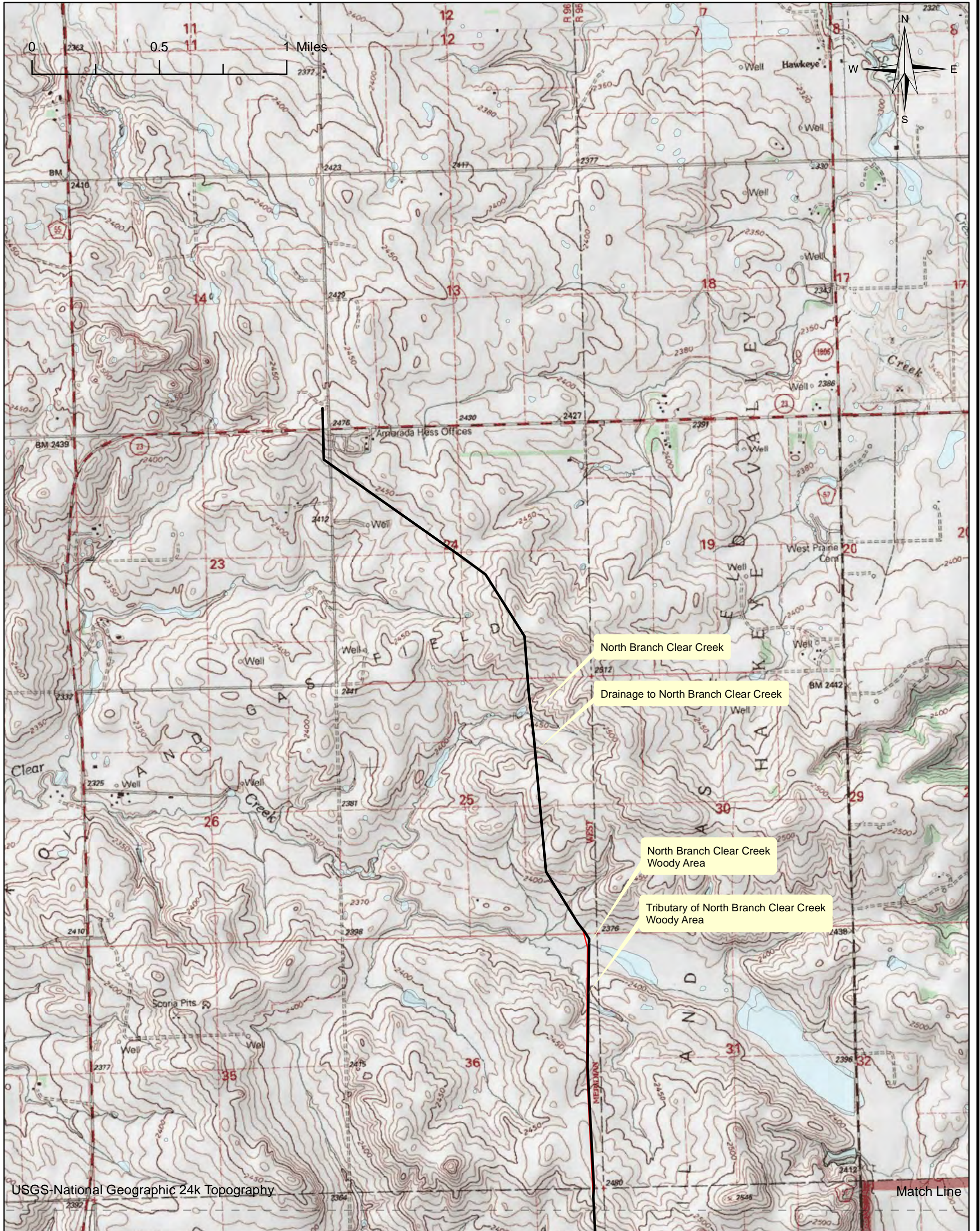
Legend

 Original Route	 USFWS Wetland Inventory
 Modified Route	 Study Corridor
 Cultural Inventory Sites	 Sensitive Species Sites

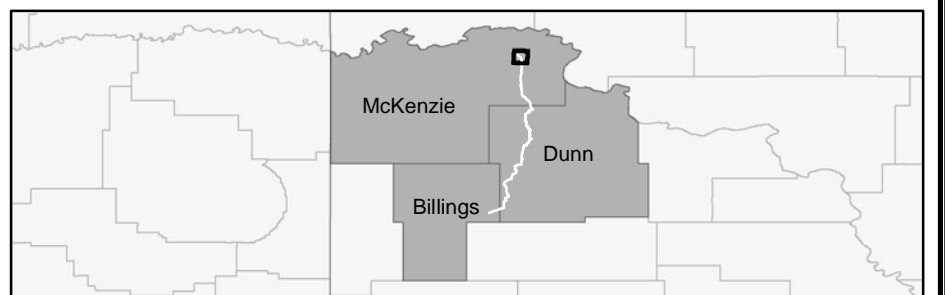
Bridger Pipeline LLC
 455 North Poplar Street
 Casper, Wyoming 82602
 307-237-9301

Figure 4.B.1a - Route Map
 12-Inch Crude Oil Pipeline
 Township 152 Range 96
 September 2010



Legend

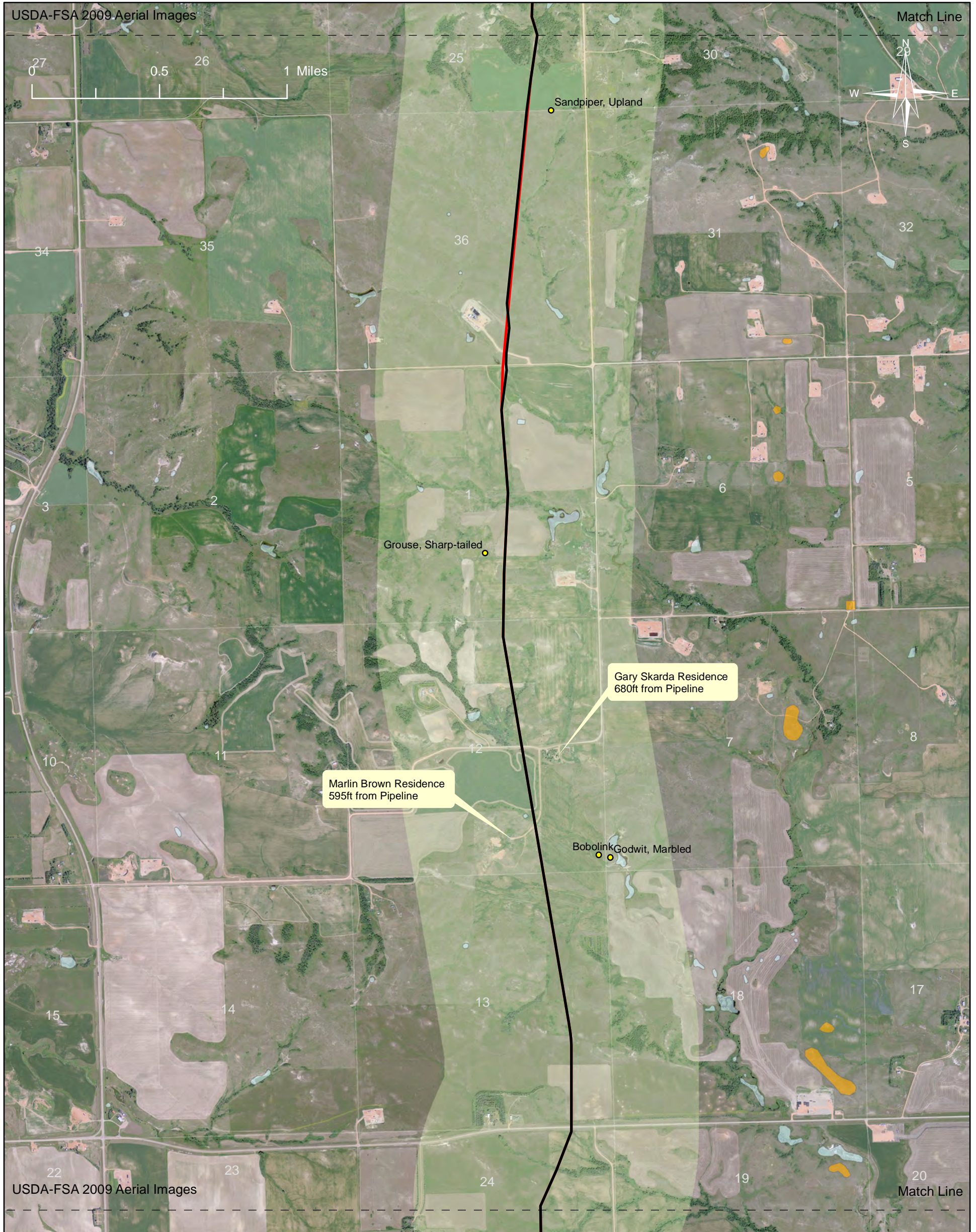
- Original Route
- Modified Route
- USFWS Wetland Inventory



BRIDGER

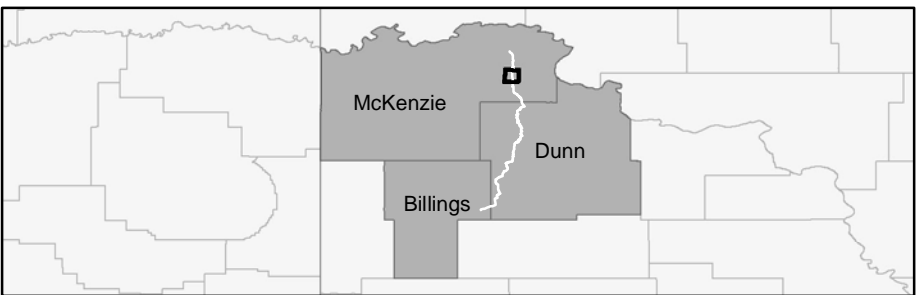
Bridger Pipeline LLC
 455 North Poplar Street
 Casper, Wyoming 82602
 307-237-9301

Figure 4.B.1b - Route Map
 12-Inch Crude Oil Pipeline
 Township 152 Range 96
 September 2010



Legend

- Original Route
- Modified Route
- Cultural Inventory Sites
- USFWS Wetland Inventory
- Study Corridor
- Sensitive Species Sites





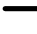




BRIDGER

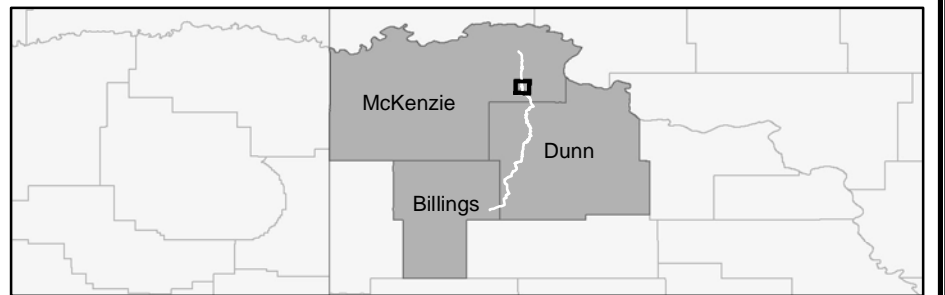
Bridger Pipeline LLC
 455 North Poplar Street
 Casper, Wyoming 82602
 307-237-9301

Figure 4.B.3a - Route Map
 12-Inch Crude Oil Pipeline
 Township 151 Range 96
 September 2010



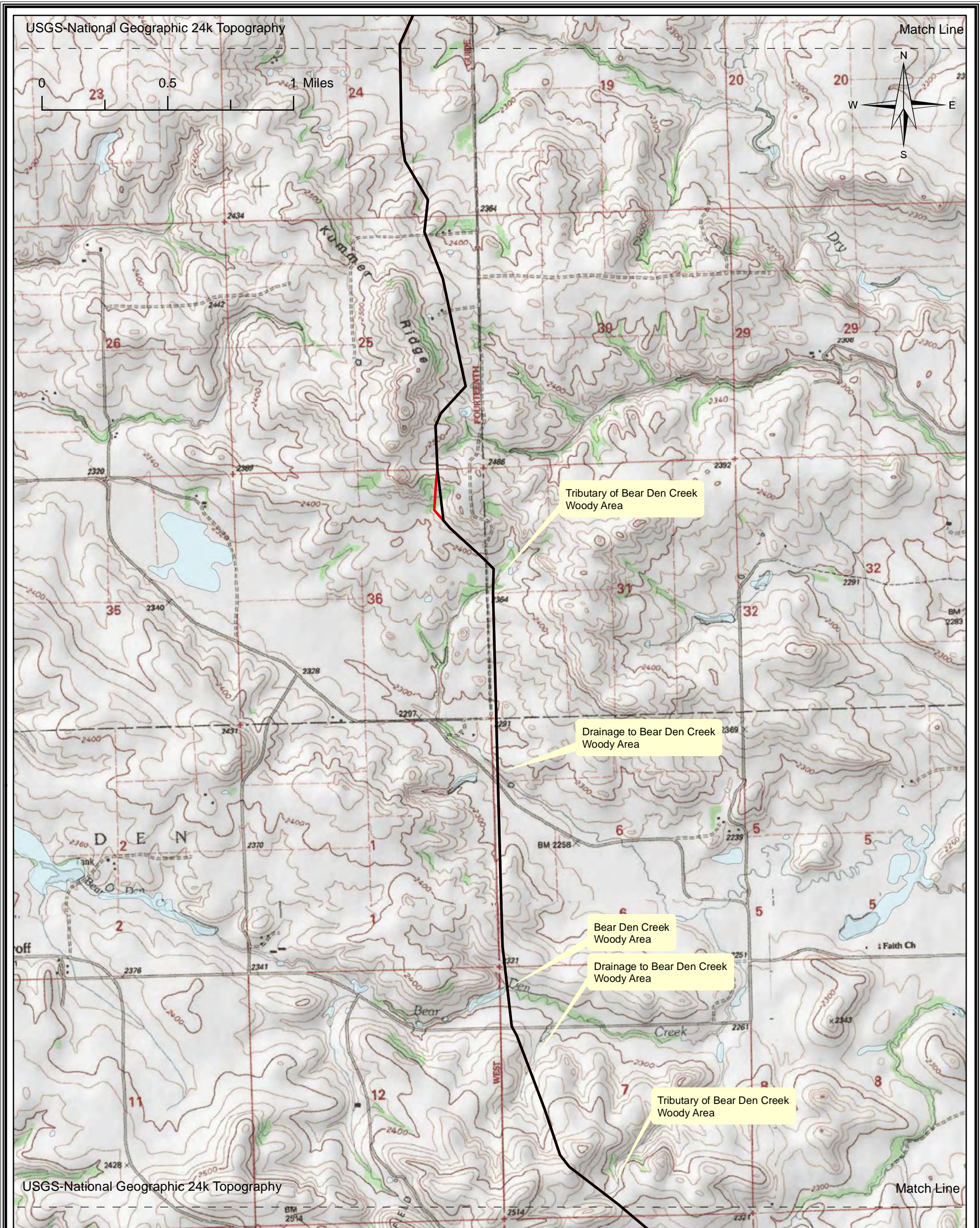
Legend

 Original Route	 USFWS Wetland Inventory
 Modified Route	 Study Corridor
 Cultural Inventory Sites	 Sensitive Species Sites
 Insignificant Cultural Inventory Sites	



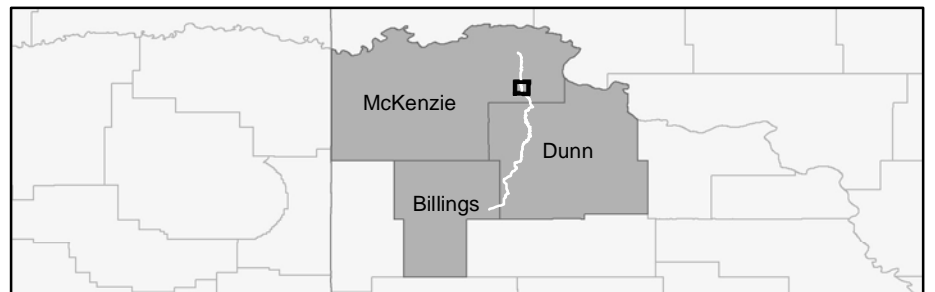

Bridger Pipeline LLC
 455 North Poplar Street
 Casper, Wyoming 82602
 307-237-9301

Figure 4.B.4a - Route Map
 12-Inch Crude Oil Pipeline
 Township 150 Range 96
 September 2010



Legend

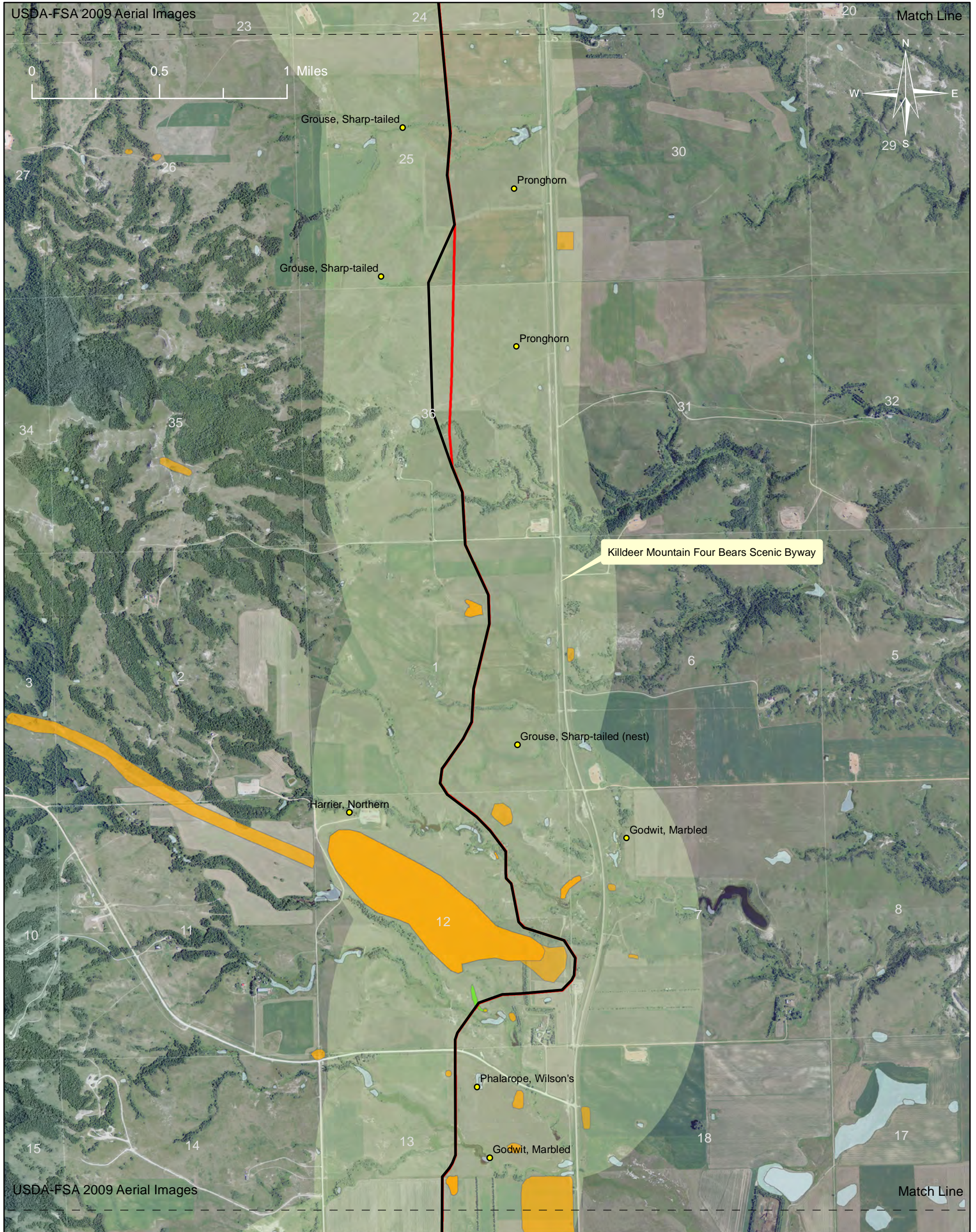
- Original Route
- Modified Route
- USFWS Wetland Inventory



BRIDGER

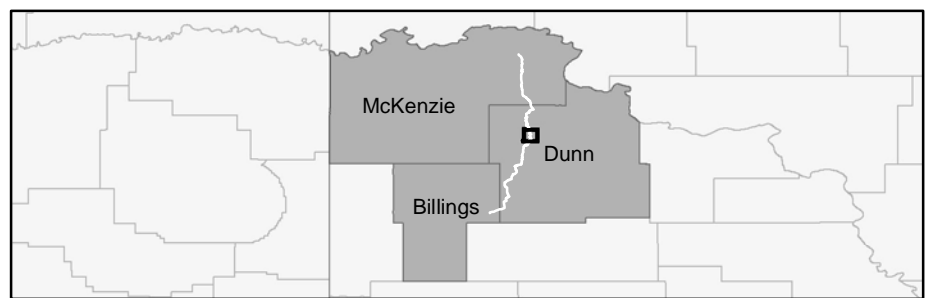
Bridger Pipeline LLC
 455 North Poplar Street
 Casper, Wyoming 82602
 307-237-9301

Figure 4.B.4b - Route Map
 12-Inch Crude Oil Pipeline
 Township 150 Range 96
 September 2010



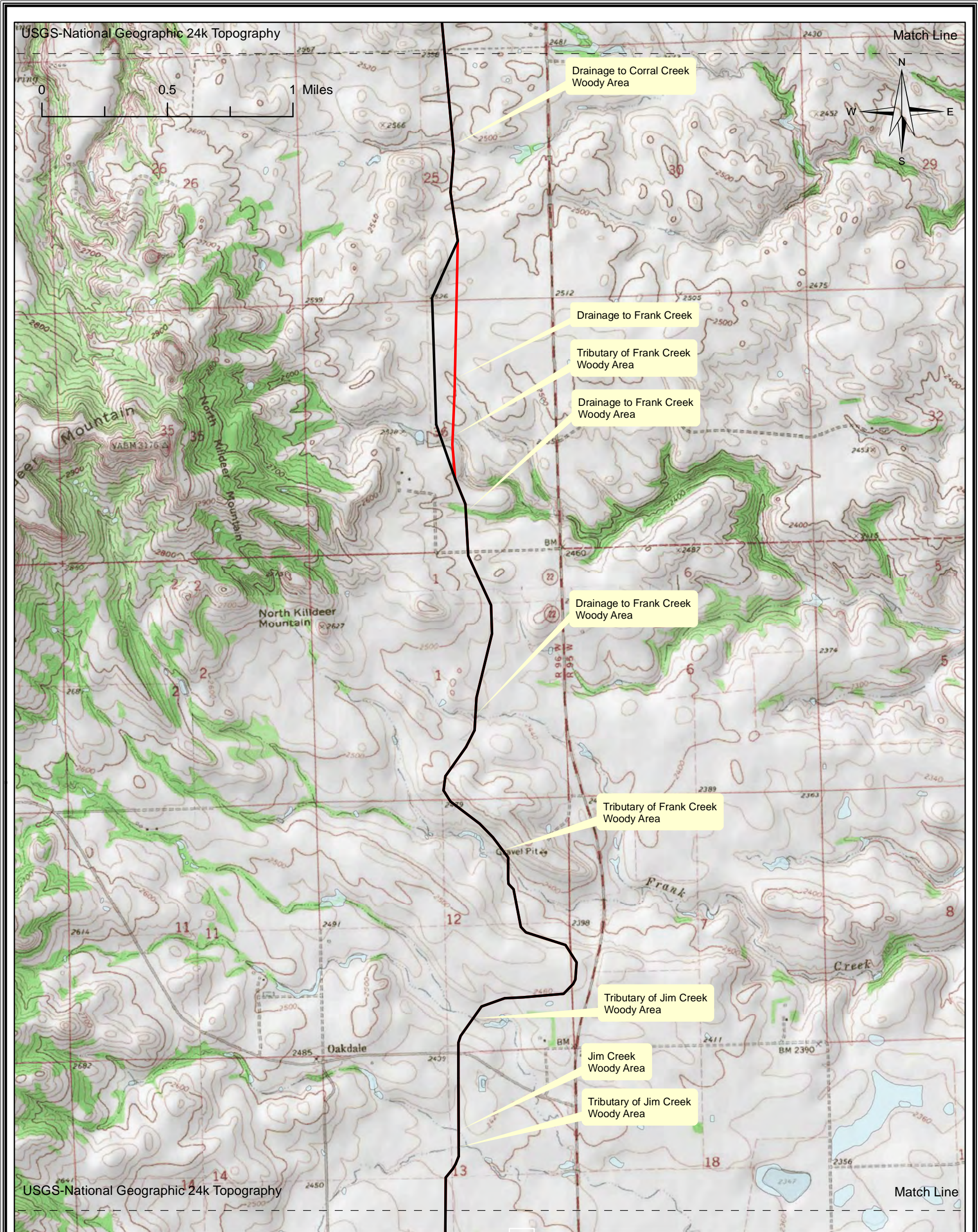
Legend

Original Route	USFWS Wetland Inventory
Modified Route	Study Corridor
Insignificant Cultural Inventory Sites	Sensitive Species Sites
Cultural Inventory Sites	



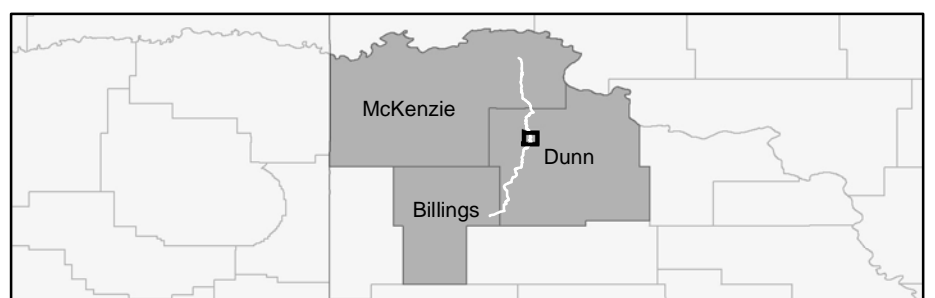

Bridger Pipeline LLC
 455 North Poplar Street
 Casper, Wyoming 82602
 307-237-9301

Figure 4.B.8a - Route Map
 12-Inch Crude Oil Pipeline
 Township 146 Range 96
 September 2010



Legend

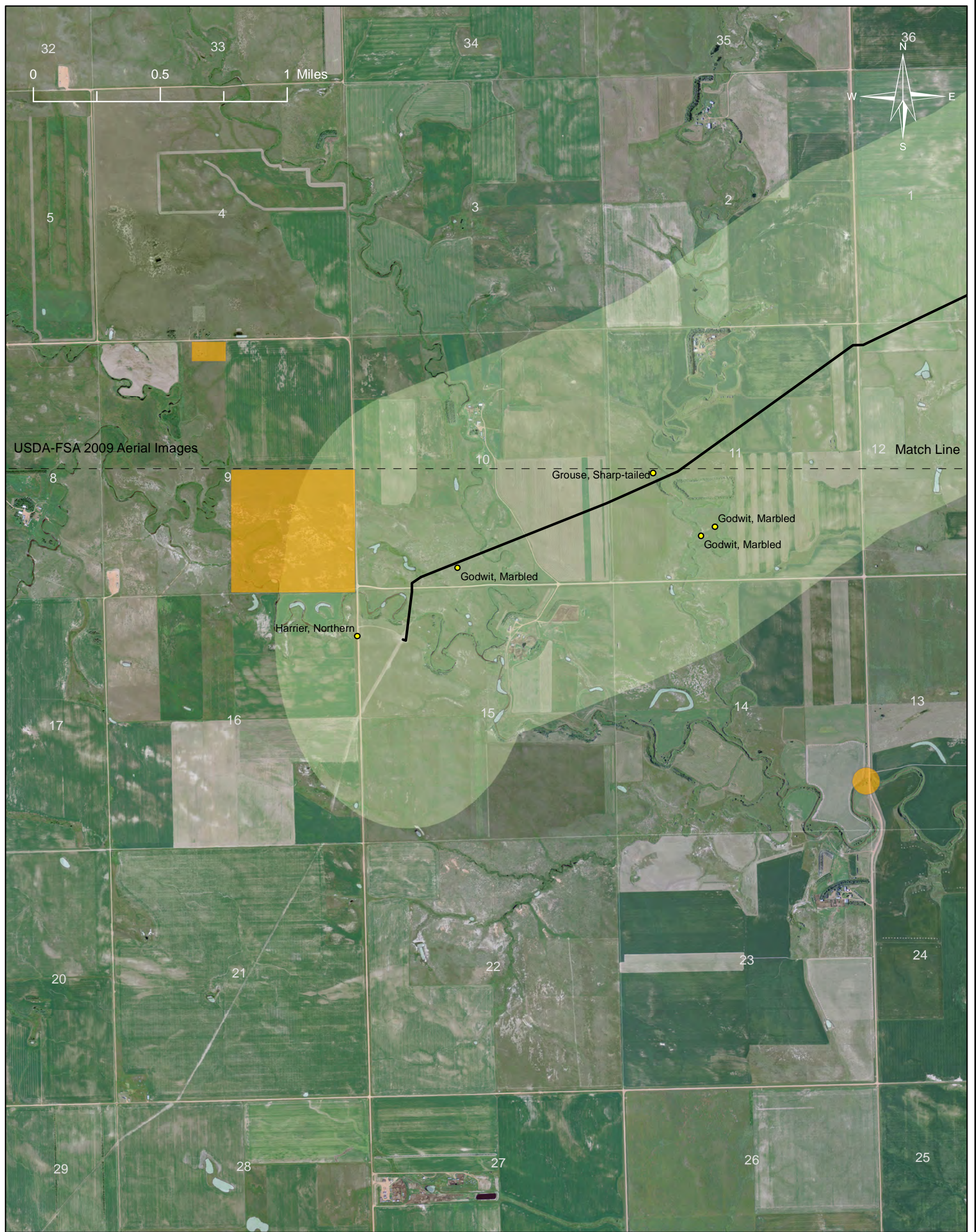
- Original Route
- USFWS Wetland Inventory
- Modified Route



BRIDGER

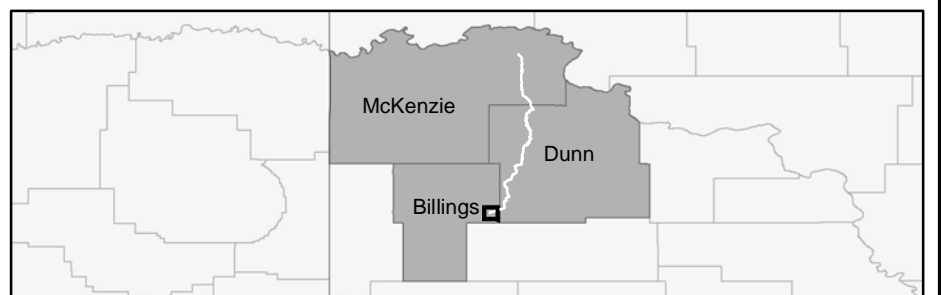
Bridger Pipeline LLC
 455 North Poplar Street
 Casper, Wyoming 82602
 307-237-9301

Figure 4.B.8b - Route Map
 12-Inch Crude Oil Pipeline
 Township 146 Range 96
 September 2010



Legend

Pipeline Route	Study Corridor
Cultural Inventory Sites	Sensitive Species Sites
USFWS Wetland Inventory	





BRIDGER

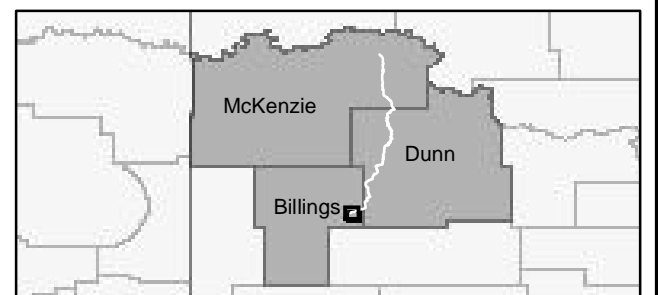

Bridger Pipeline LLC
 455 North Poplar Street
 Casper, Wyoming 82602
 307-237-9301

Figure 4.B.16a - Route Map
 12-Inch Crude Oil Pipeline
 Township 141 Range 98
 September 2010



Legend

-  Pipeline Route
-  USFWS Wetland Inventory

Bridger Pipeline LLC
 455 North Poplar Street
 Casper, Wyoming 82602
 307-237-9301

Figure 4.B.16b - Route Map
 12-Inch Crude Oil Pipeline
 Township 141 Range 98
 September 2010