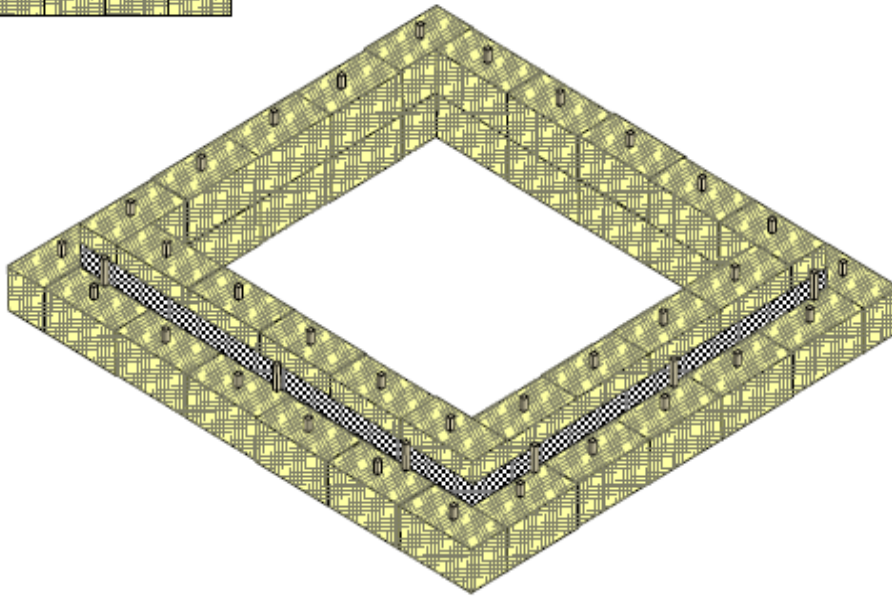
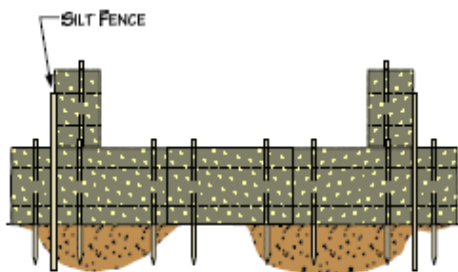


NOTES

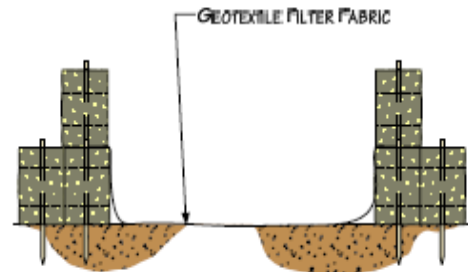
1. ARRANGE THE STRAW BALES TO THE X AND Y DIMENSIONS AS SPECIFIED BELOW.
2. IF BOTTOM OF STRUCTURE IS NOT LINED WITH STRAW BALES (OPTION 1), LINE ENTIRE STRUCTURE WITH GEOTEXTILE FILTER FABRIC.



PERSPECTIVE VIEW



OPTION 1



OPTION 2

MINIMUM SUMP DIMENSIONS (FEET)		MAXIMUM PUMPING RATE GALLONS PER MINUTE
X	Y	
10	20	300
15	20	350
20	20	400
20	25	450
25	25	500
25	30	550
30	30	660



Bridger Pipeline LLC
 455 North Poplar Street
 Casper, Wyoming 82602
 307-237-9301

Figure 6.2.8 – Typical Straw-Bale Dewatering Structure
 12-inch Crude Oil Pipeline
 July 2010