

Legend

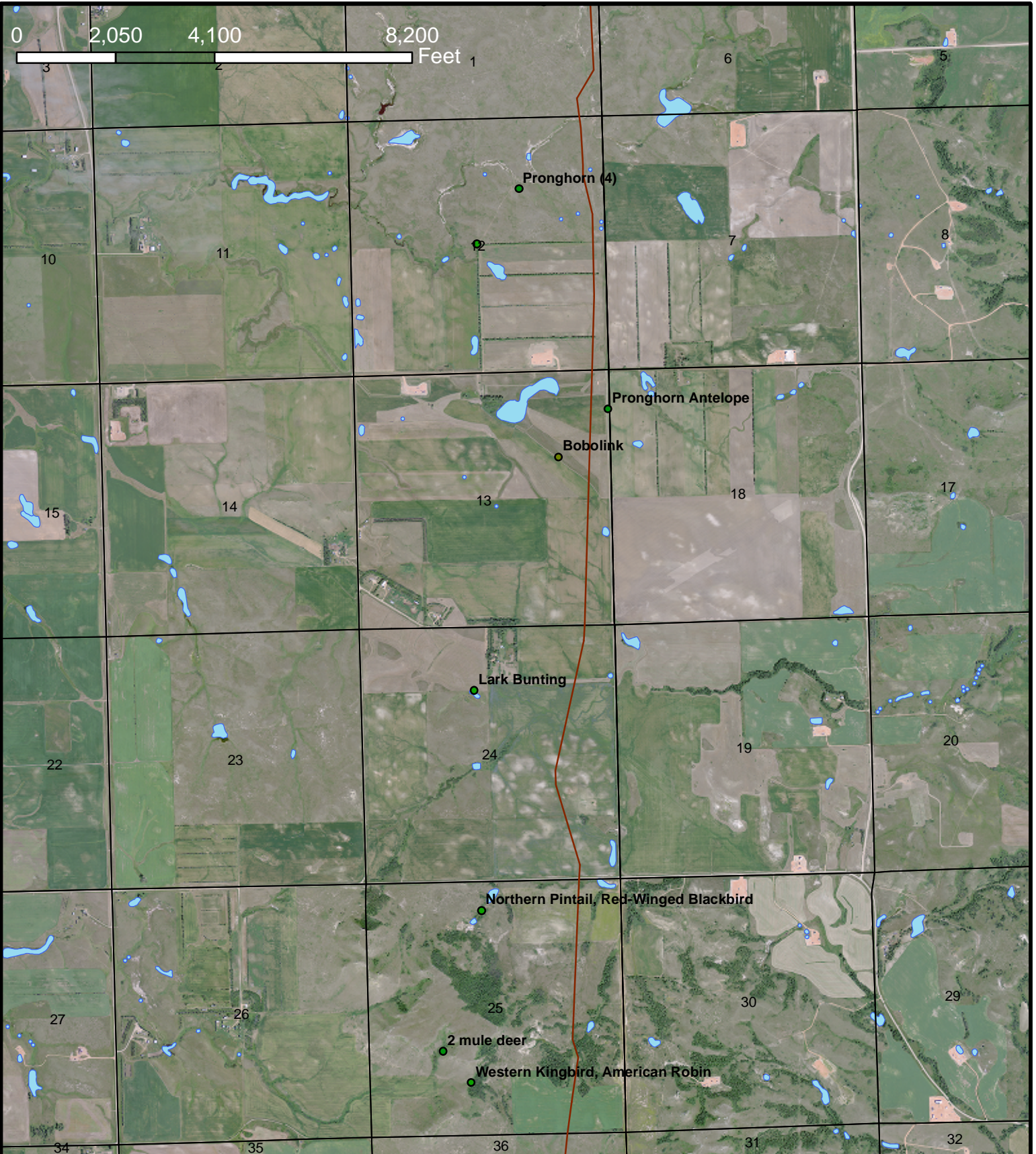
- Three_Affiliated_Tribes_Land
- Update_PipelineRoute_8_30_10
- PLSS Sections
- ! Nests
- FWS Wetland Inventory
- Prairie Dog Colony



Bridger Pipeline LLC
455 North Poplar Street
Casper, Wyoming 82602

Wildlife Map 1
 12-Inch Crude Oil Pipeline
 US Fish and Wildlife Service
 September 2010

0 2,050 4,100 8,200 Feet 1



Legend

- Three_Affiliated_Tribes_Land
- PLSS Sections
- Prairie Dog Colonys
- Update_PipelineRoute_8_30_10
- ! Nests
- FWS Wetland Inventory



Bridger Pipeline LLC
455 North Poplar Street
Casper, Wyoming 82602

Wildlife Map 2
 12-Inch Crude Oil Pipeline
 US Fish and Wildlife Service
 September 2010



Legend

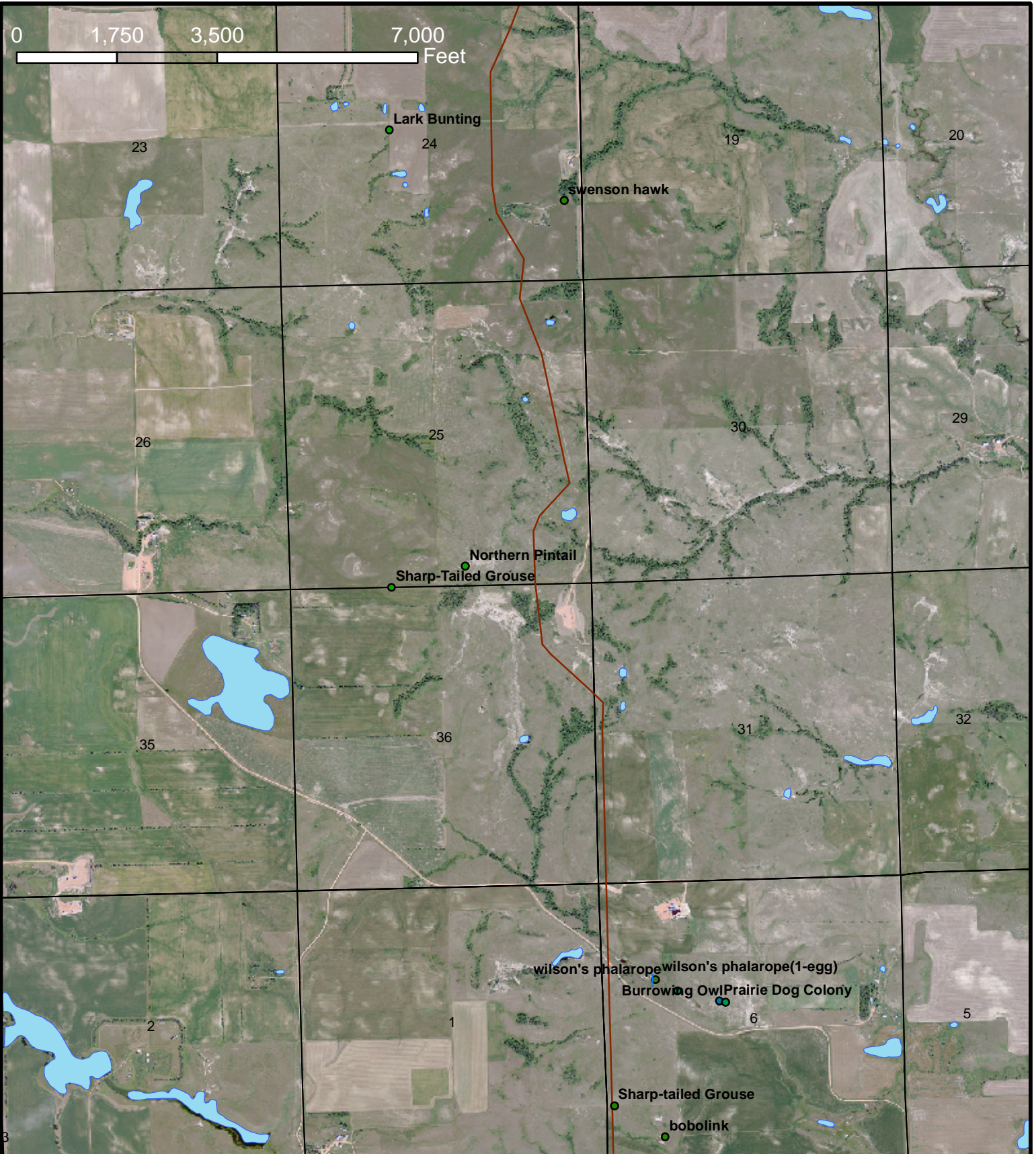
- Three_Affiliated_Tribes_Land
- Update_PipelineRoute_8_30_10
- PLSS Sections
- ! Nests
- Prairie Dog Colony
- FWS Wetland Inventory



Bridger Pipeline LLC
455 North Poplar Street
Casper, Wyoming 82602

Wildlife Map 3
 12-Inch Crude Oil Pipeline
 US Fish and Wildlife Service
 September 2010

0 1,750 3,500 7,000 Feet



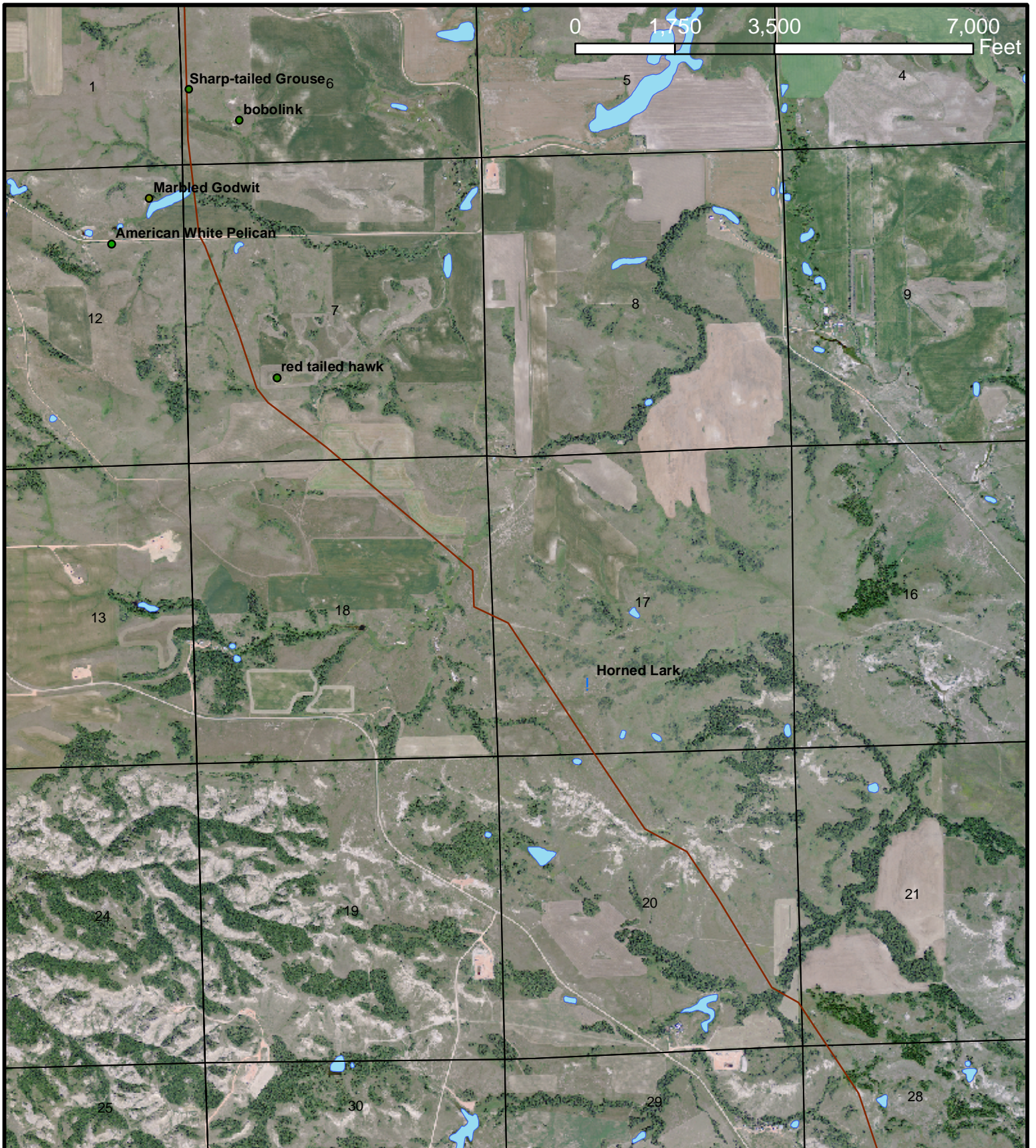
Legend

- ! Nests
- Update_PipelineRoute_8_30_10
- Three_Affiliated_Tribes_Land
- PLSS Sections
- Prairie Dog Colony
- FWS Wetland Inventory



Bridger Pipeline LLC
455 North Poplar Street
Casper, Wyoming 82602

Wildlife Map 4
12-Inch Crude Oil Pipeline
US Fish and Wildlife Service
September 2010



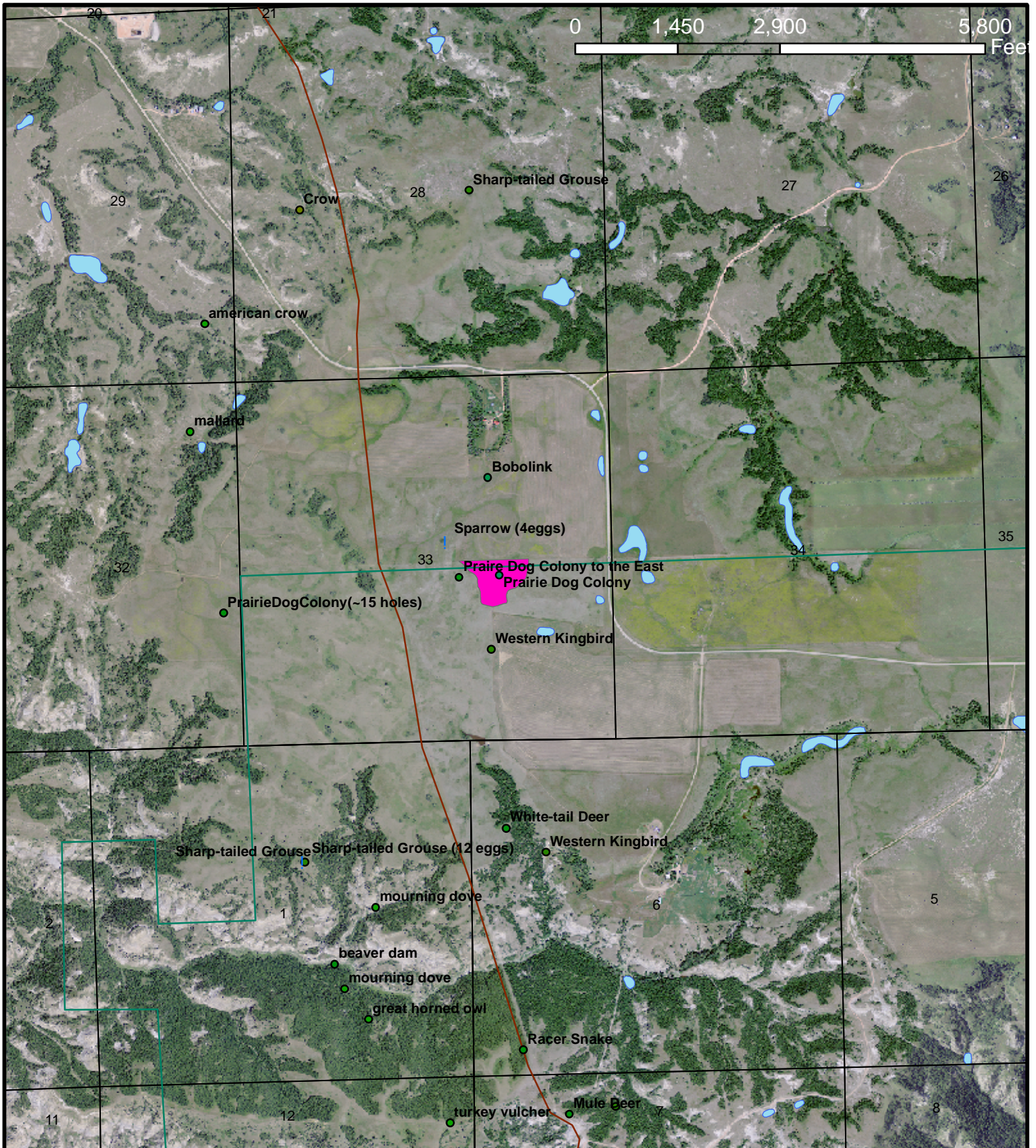
Legend

- Three_Affiliated_Tribes_Land
- PLSS Sections
- Prairie Dog Colony
- Update_PipelineRoute_8_30_10
- Nests
- FWS Wetland Inventory



Bridger Pipeline LLC
455 North Poplar Street
Casper, Wyoming 82602

Wildlife Map 5
 12-Inch Crude Oil Pipeline
 US Fish and Wildlife Service
 September 2010



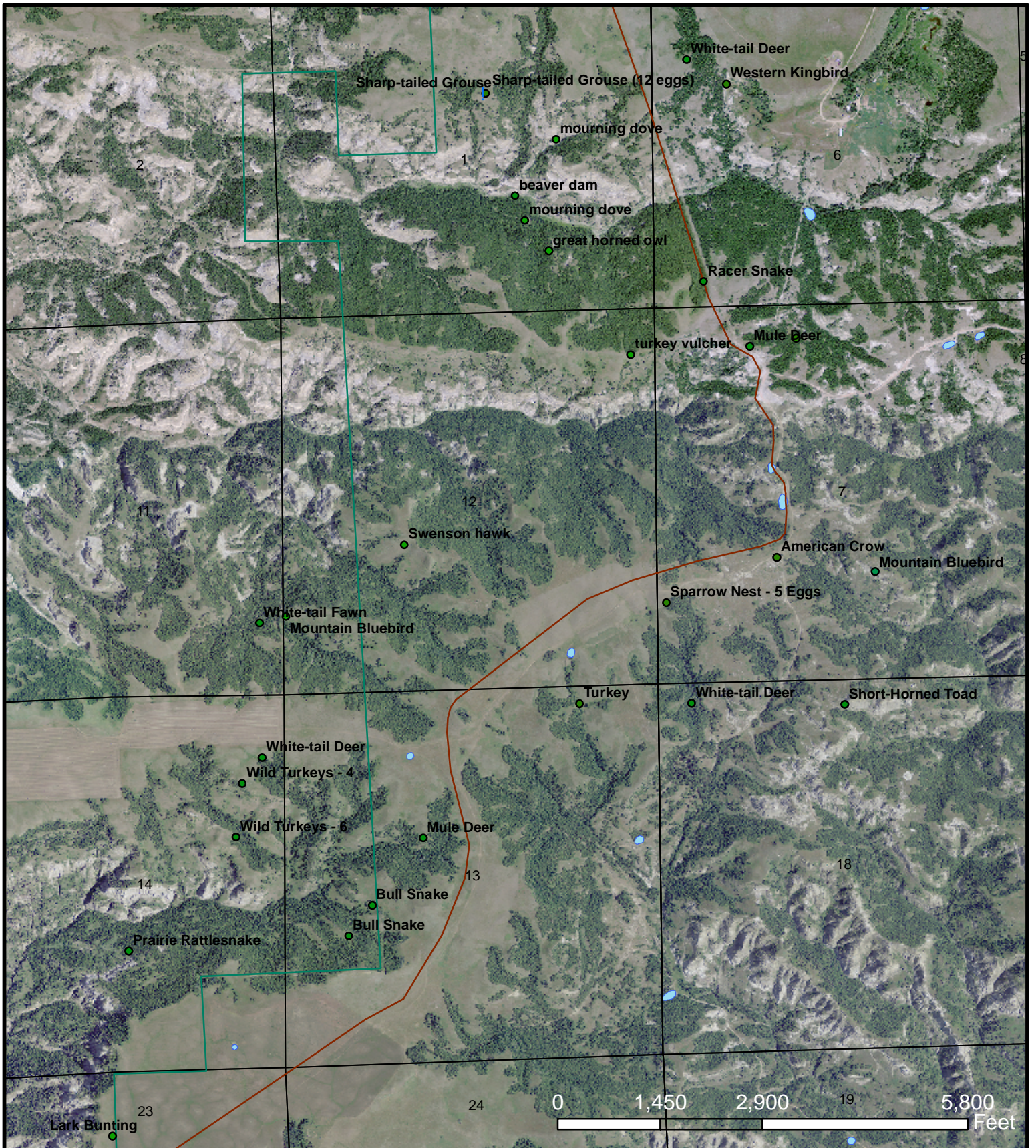
Legend

- Three_Affiliated_Tribes_Land
- Update_PipelineRoute_8_30_10
- PLSS Sections
- Prairie Dog Colony
- ! Nests
- FWS Wetland Inventory



Bridger Pipeline LLC
455 North Poplar Street
Casper, Wyoming 82602

Wildlife Map 6
 12-Inch Crude Oil Pipeline
 US Fish and Wildlife Service
 September 2010



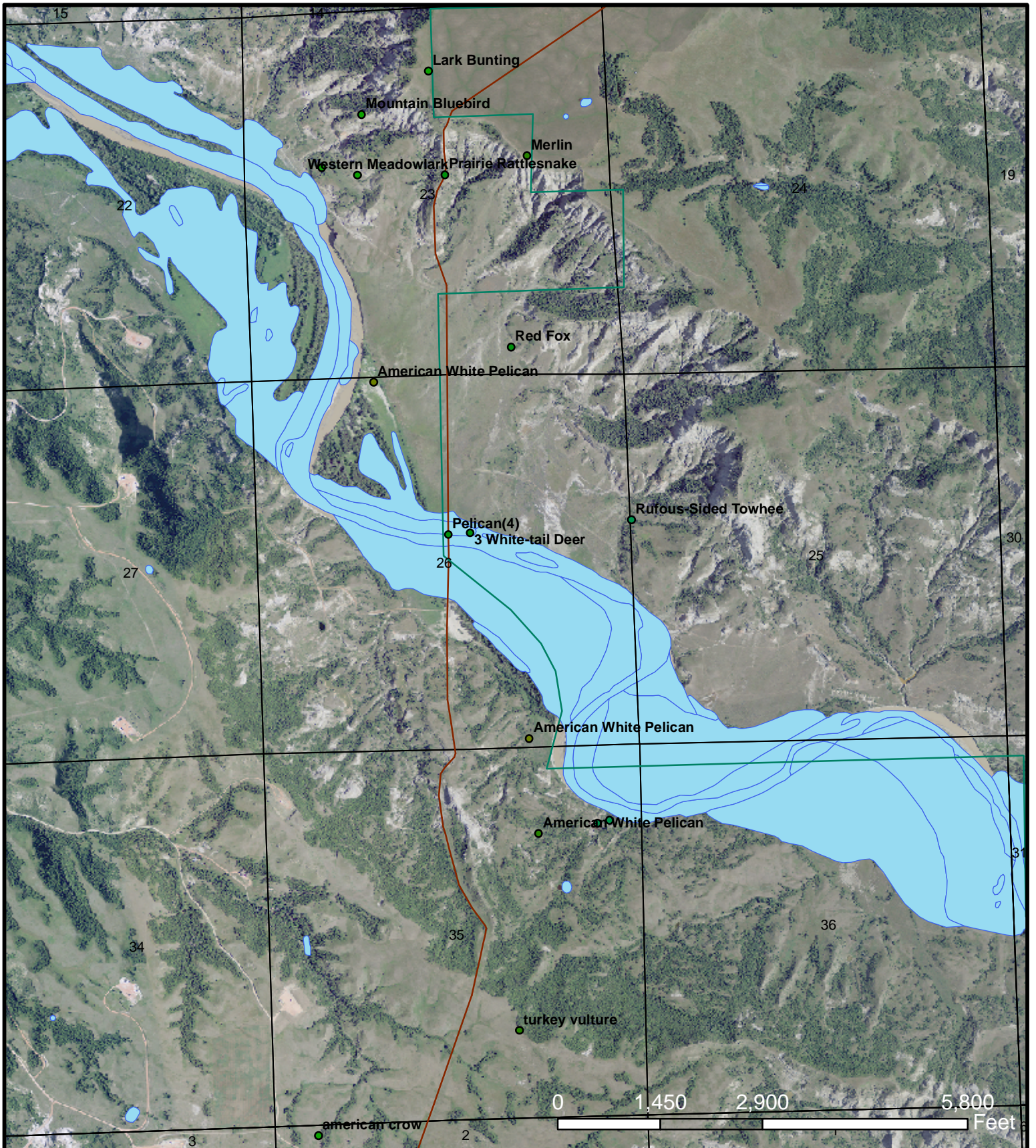
Legend

- Three_Affiliated_Tribes_Land
- Update_PipelineRoute_8_30_10
- PLSS Sections
- Prairie Dog Colony
- ! Nests
- FWS Wetland Inventory



Bridger Pipeline LLC
 455 North Poplar Street
 Casper, Wyoming 82602

Wildlife Map 7
 12-Inch Crude Oil Pipeline
 US Fish and Wildlife Service
 September 2010



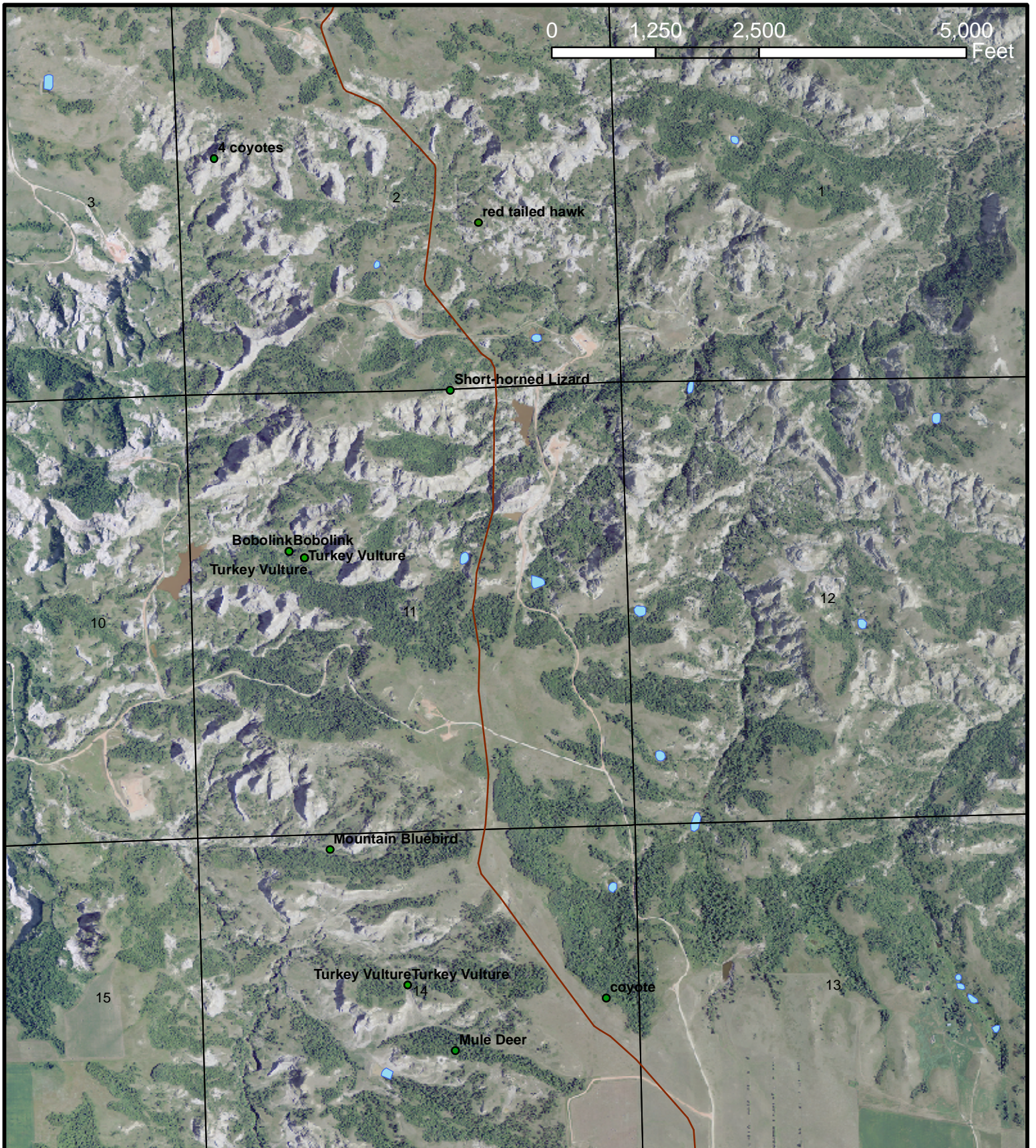
Legend

- Three_Affiliated_Tribes_Land
- Update_PipelineRoute_8_30_10
- PLSS Sections
- Prairie Dog Colony
- ! Nests
- FWS Wetland Inventory



Bridger Pipeline LLC
 455 North Poplar Street
 Casper, Wyoming 82602

Wildlife Map 8
 12-Inch Crude Oil Pipeline
 US Fish and Wildlife Service
 September 2010



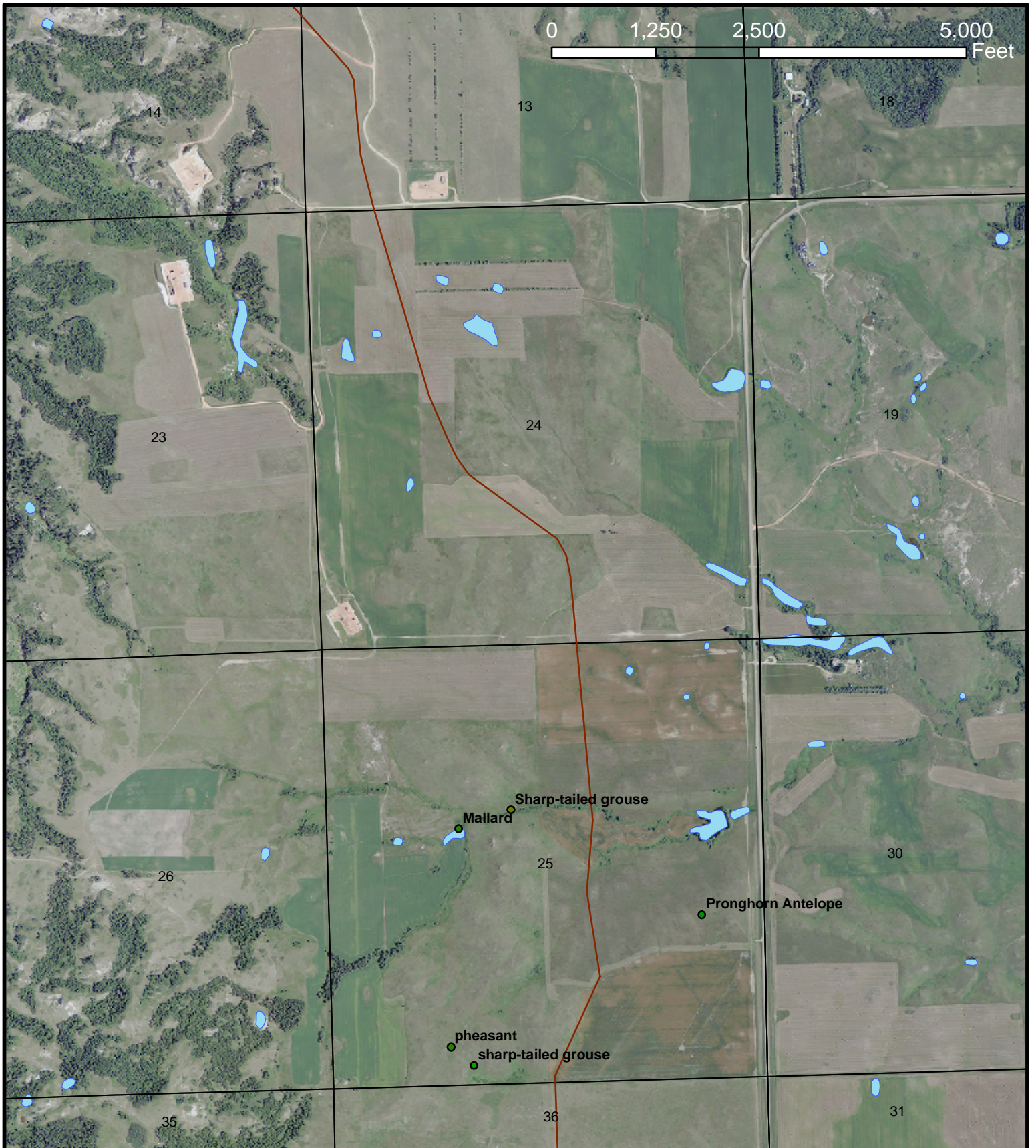
Legend

- Three_Affiliated_Tribes_Land
- Update_PipelineRoute_8_30_10
- PLSS Sections
- Prairie Dog Colony
- ! Nests
- FWS Wetland Inventory



Bridger Pipeline LLC
455 North Poplar Street
Casper, Wyoming 82602

Wildlife Map 9
 12-Inch Crude Oil Pipeline
 US Fish and Wildlife Service
 September 2010



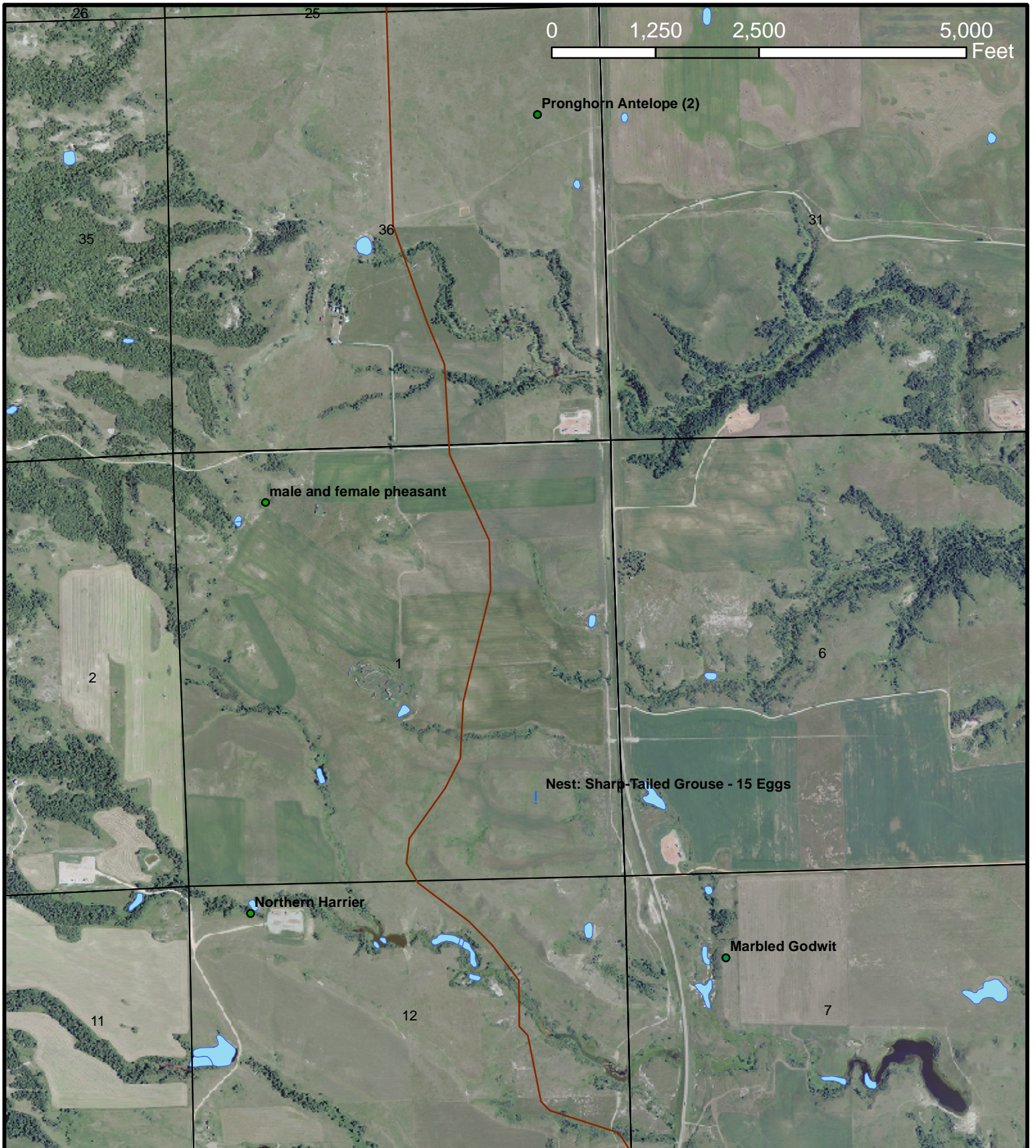
Legend

- Three_Affiliated_Tribes_Land
- Update_PipelineRoute_8_30_10
- PLSS Sections
- Prairie Dog Colony
- FWS Wetland Inventory
- ! Nests



Bridger Pipeline LLC
455 North Poplar Street
Casper, Wyoming 82602

Wildlife Map 10
 12-Inch Crude Oil Pipeline
 US Fish and Wildlife Service
 September 2010



Legend

- Three_Affiliated_Tribes_Land
- Update_PipelineRoute_8_30_10
- PLSS Sections
- Prairie Dog Colony
- FWS Wetland Inventory
- ! Nests



Bridger Pipeline LLC
455 North Poplar Street
Casper, Wyoming 82602

Wildlife Map 11
 12-Inch Crude Oil Pipeline
 US Fish and Wildlife Service
 September 2010



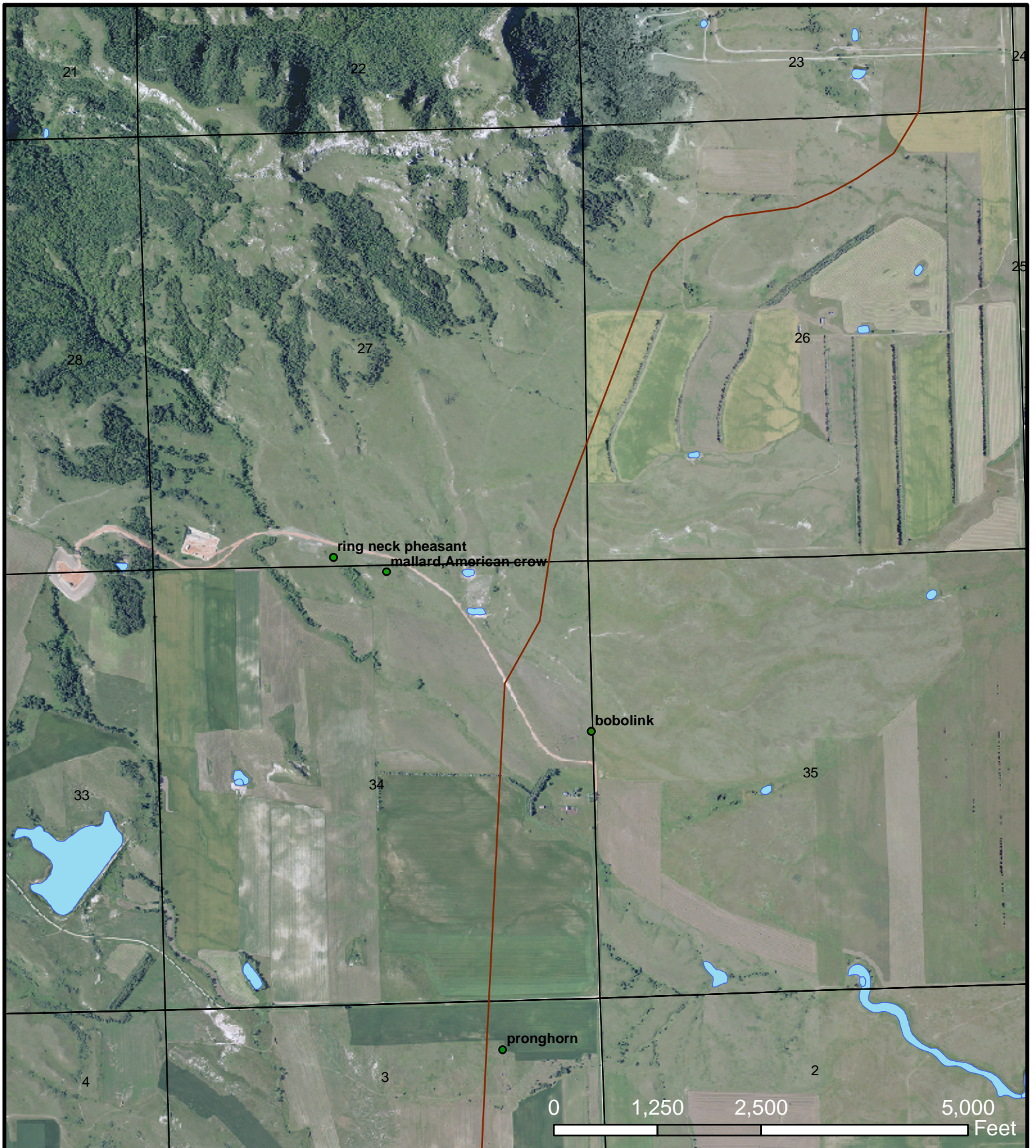
Legend

- Three_Affiliated_Tribes_Land
 - Update_PipelineRoute_8_30_10
- PLSS Sections
 - Prairie Dog Colony
- FWS Wetland Inventory
 - ! Nests



Bridger Pipeline LLC
455 North Poplar Street
Casper, Wyoming 82602

Wildlife Map 12
 12-Inch Crude Oil Pipeline
 US Fish and Wildlife Service
 September 2010



Legend

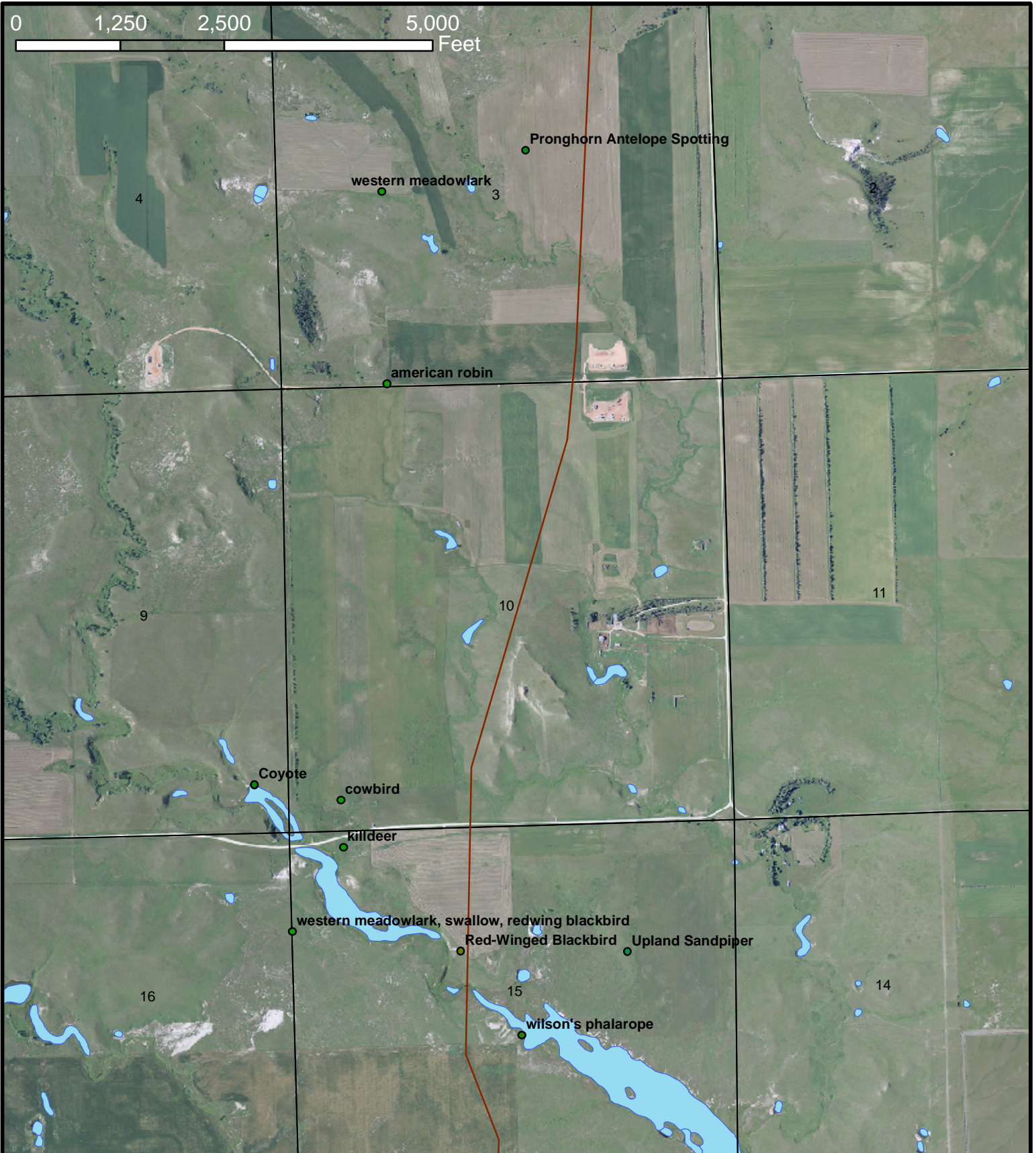
- Three_Affiliated_Tribes_Land
- Update_PipelineRoute_8_30_10
- PLSS Sections
- Prairie Dog Colony
- FWS Wetland Inventory
- ! Nests



Bridger Pipeline LLC
455 North Poplar Street
Casper, Wyoming 82602

Wildlife Map 13
 12-Inch Crude Oil Pipeline
 US Fish and Wildlife Service
 September 2010

0 1,250 2,500 5,000 Feet



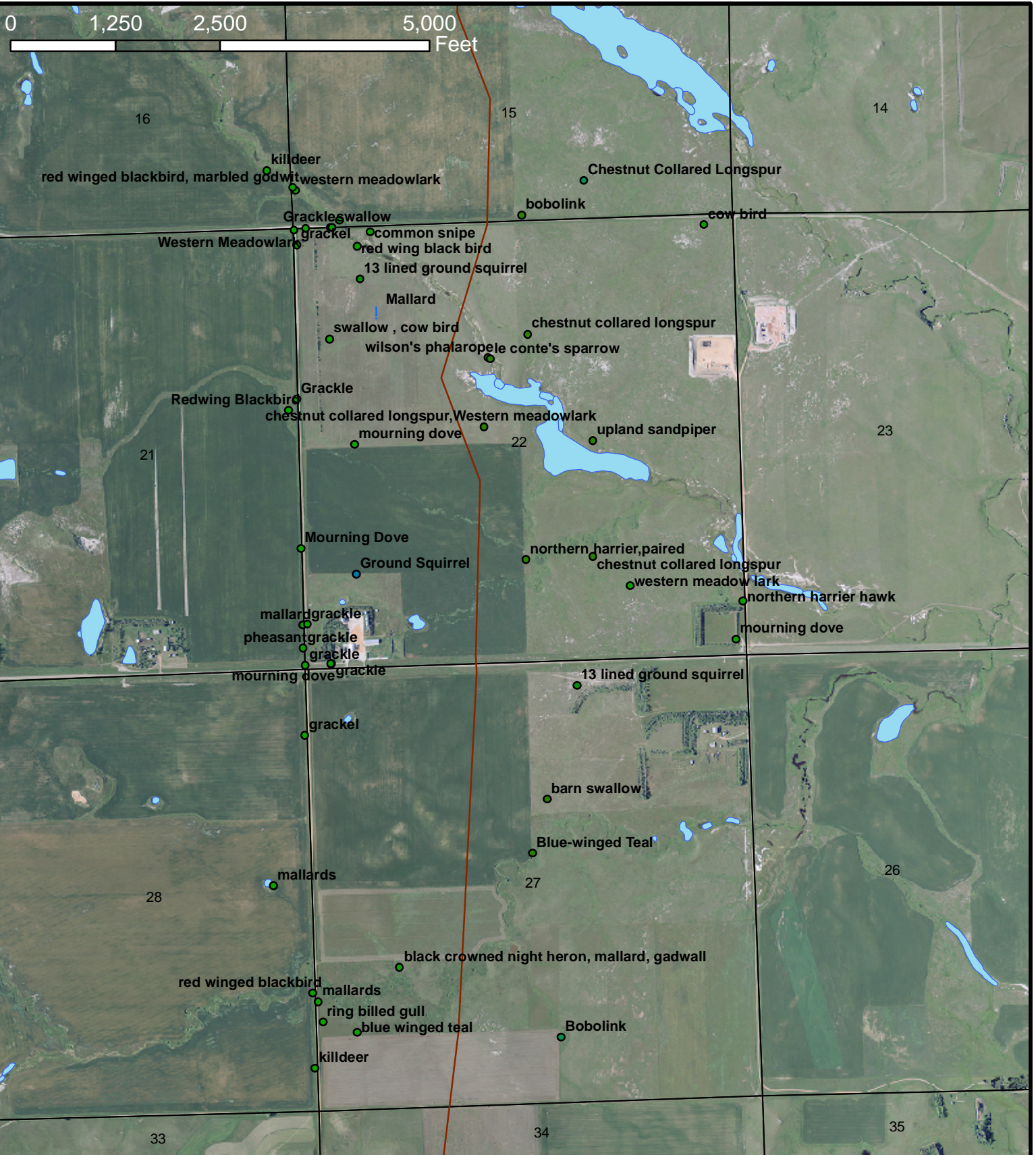
Legend

- Three_Affiliated_Tribes_Land
- Update_PipelineRoute_8_30_10
- PLSS Sections
- Prairie Dog Colony
- FWS Wetland Inventory
- ! Nests



Bridger Pipeline LLC
455 North Poplar Street
Casper, Wyoming 82602

Wildlife Map 14
 12-Inch Crude Oil Pipeline
 US Fish and Wildlife Service
 September 2010



Legend

- Three_Affiliated_Tribes_Land
- PLSS Sections
- FWS Wetland Inventory
- Update_PipelineRoute_8_30_10
- Prairie Dog Colony
- ! Nests



Bridger Pipeline LLC
455 North Poplar Street
Casper, Wyoming 82602

Wildlife Map 15
 12-Inch Crude Oil Pipeline
 US Fish and Wildlife Service
 September 2010



0 1,250 2,500 5,000 Feet

Legend

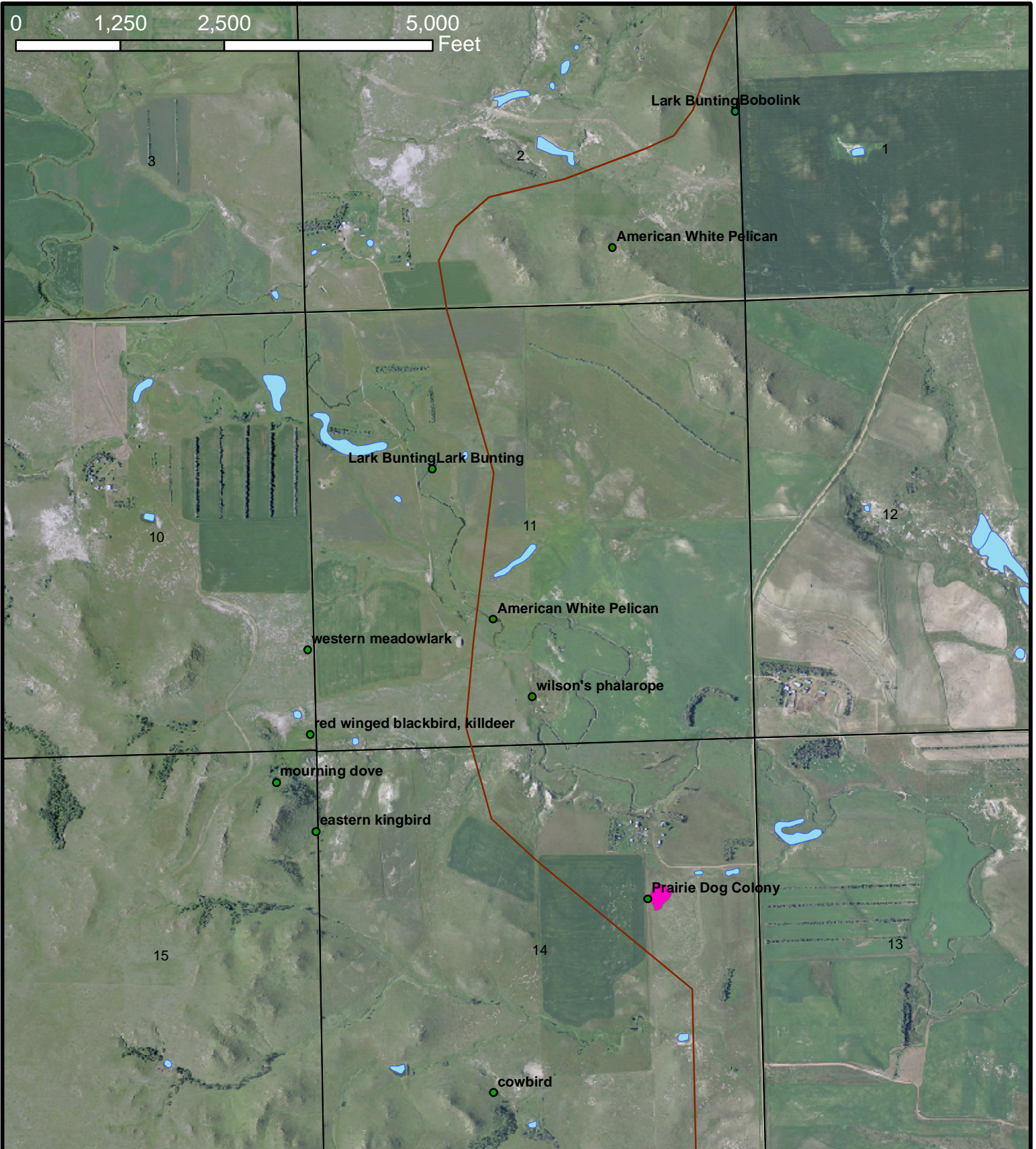
- Three_Affiliated_Tribes_Land
- PLSS Sections
- FWS Wetland Inventory
- Update_PipelineRoute_8_30_10
- Prairie Dog Colony
- Nests



Bridger Pipeline LLC
 455 North Poplar Street
 Casper, Wyoming 82602

Wildlife Map 16
 12-Inch Crude Oil Pipeline
 US Fish and Wildlife Service
 September 2010

0 1,250 2,500 5,000 Feet



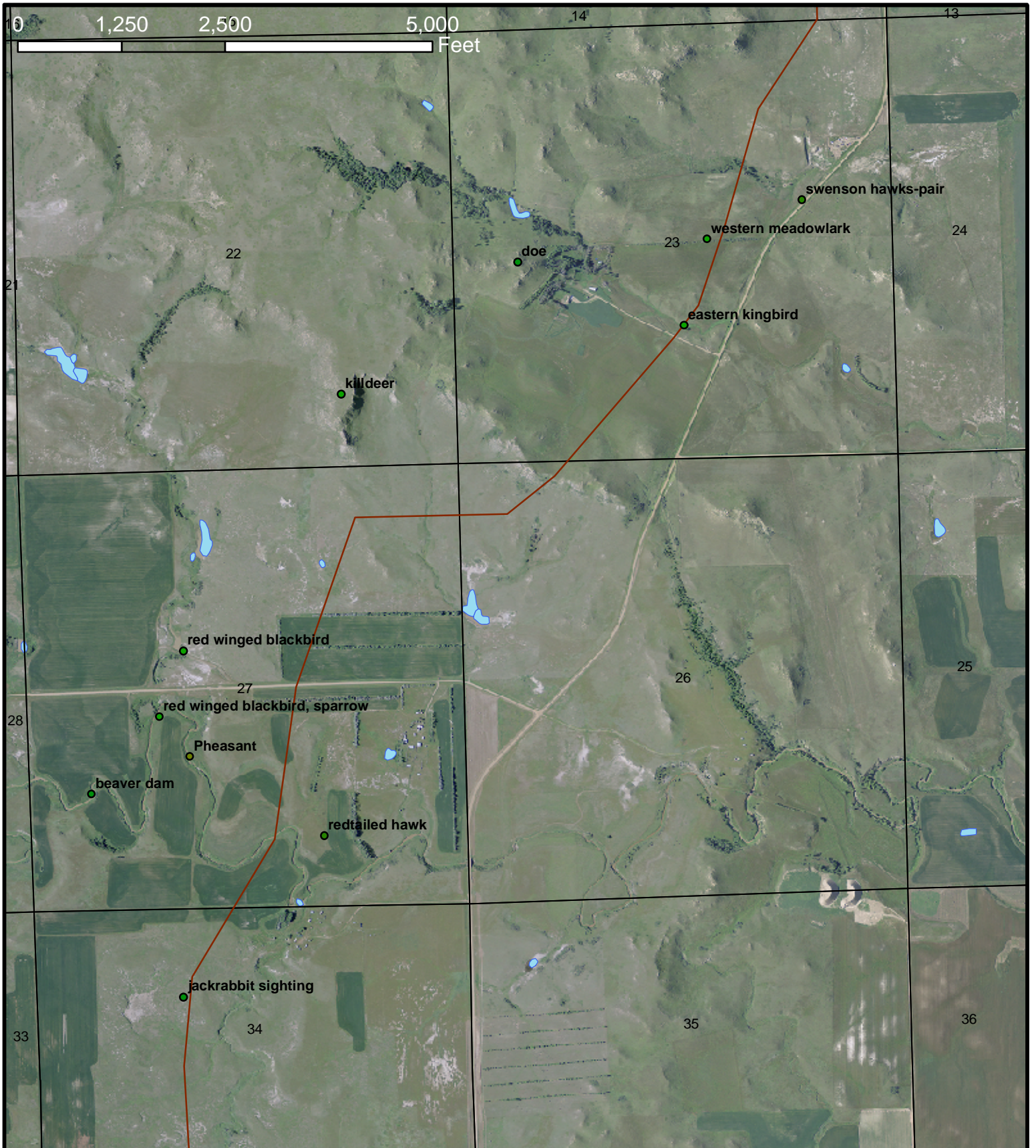
Legend

- Three_Affiliated_Tribes_Land
- Update_PipelineRoute_8_30_10
- PLSS Sections
- Prairie Dog Colony
- FWS Wetland Inventory
- ! Nests



Bridger Pipeline LLC
 455 North Poplar Street
 Casper, Wyoming 82602

Wildlife Map 17
 12-Inch Crude Oil Pipeline
 US Fish and Wildlife Service
 September 2010



Legend

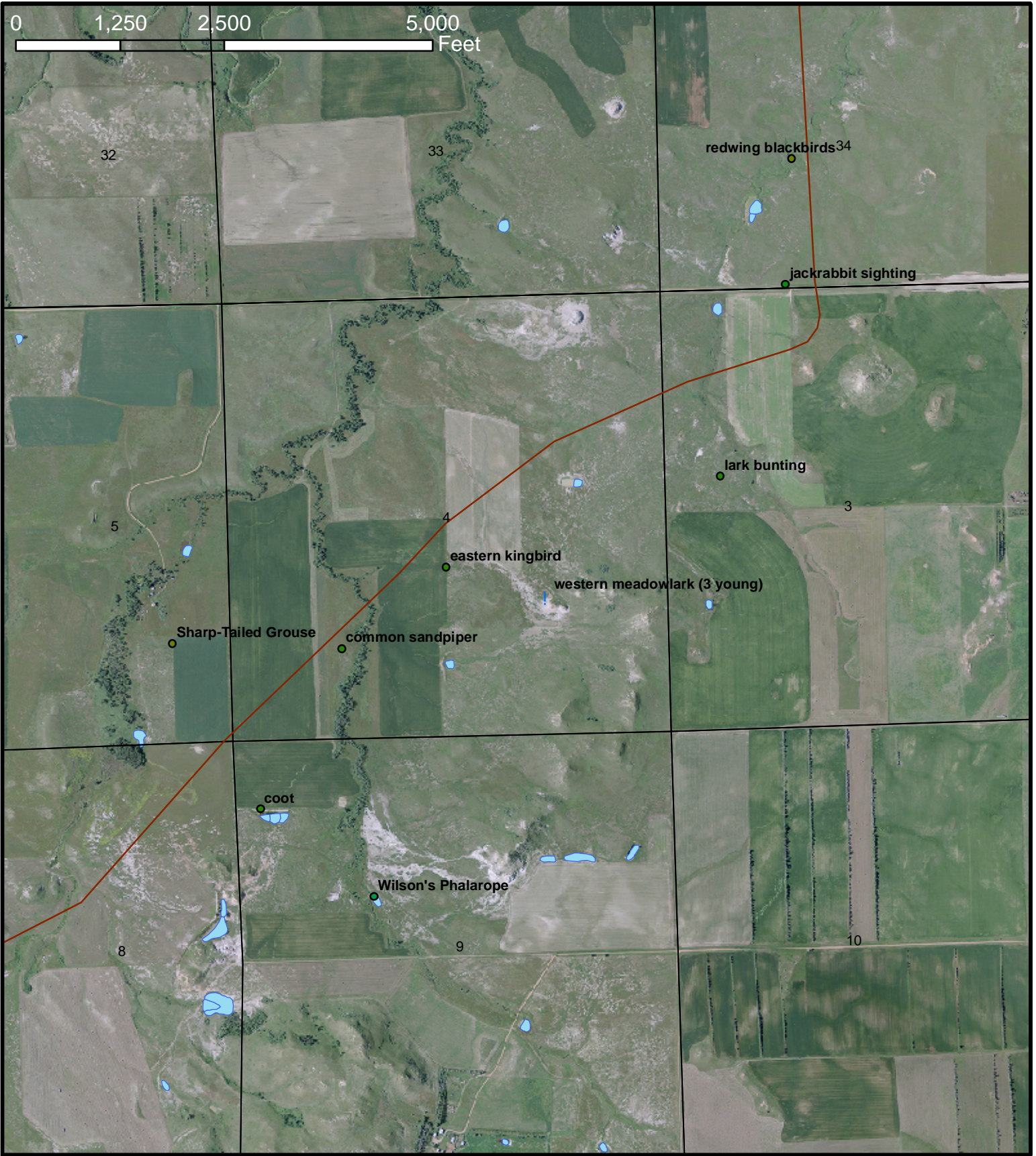
- Three_Affiliated_Tribes_Land
- Update_PipelineRoute_8_30_10
- PLSS Sections
- Prairie Dog Colony
- FWS Wetland Inventory
- ! Nests



Bridger Pipeline LLC
455 North Poplar Street
Casper, Wyoming 82602

Wildlife Map 18
 12-Inch Crude Oil Pipeline
 US Fish and Wildlife Service
 September 2010

0 1,250 2,500 5,000 Feet



Legend

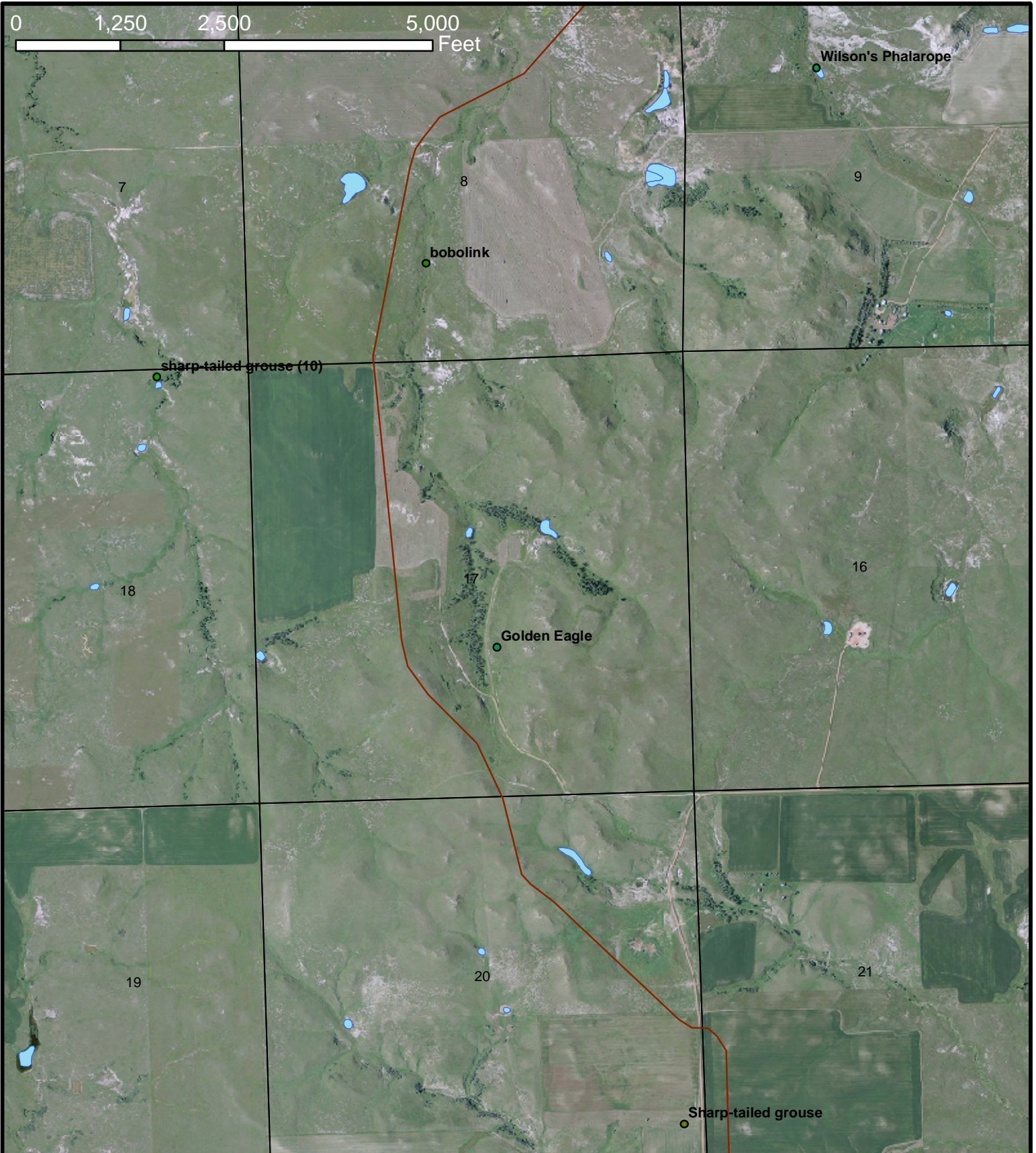
- Three_Affiliated_Tribes_Land
- PLSS Sections
- FWS Wetland Inventory
- Update_PipelineRoute_8_30_10
- Prairie Dog Colony
- ! Nests



Bridger Pipeline LLC
455 North Poplar Street
Casper, Wyoming 82602

Wildlife Map 19
12-Inch Crude Oil Pipeline
US Fish and Wildlife Service
September 2010

0 1,250 2,500 5,000 Feet



Legend

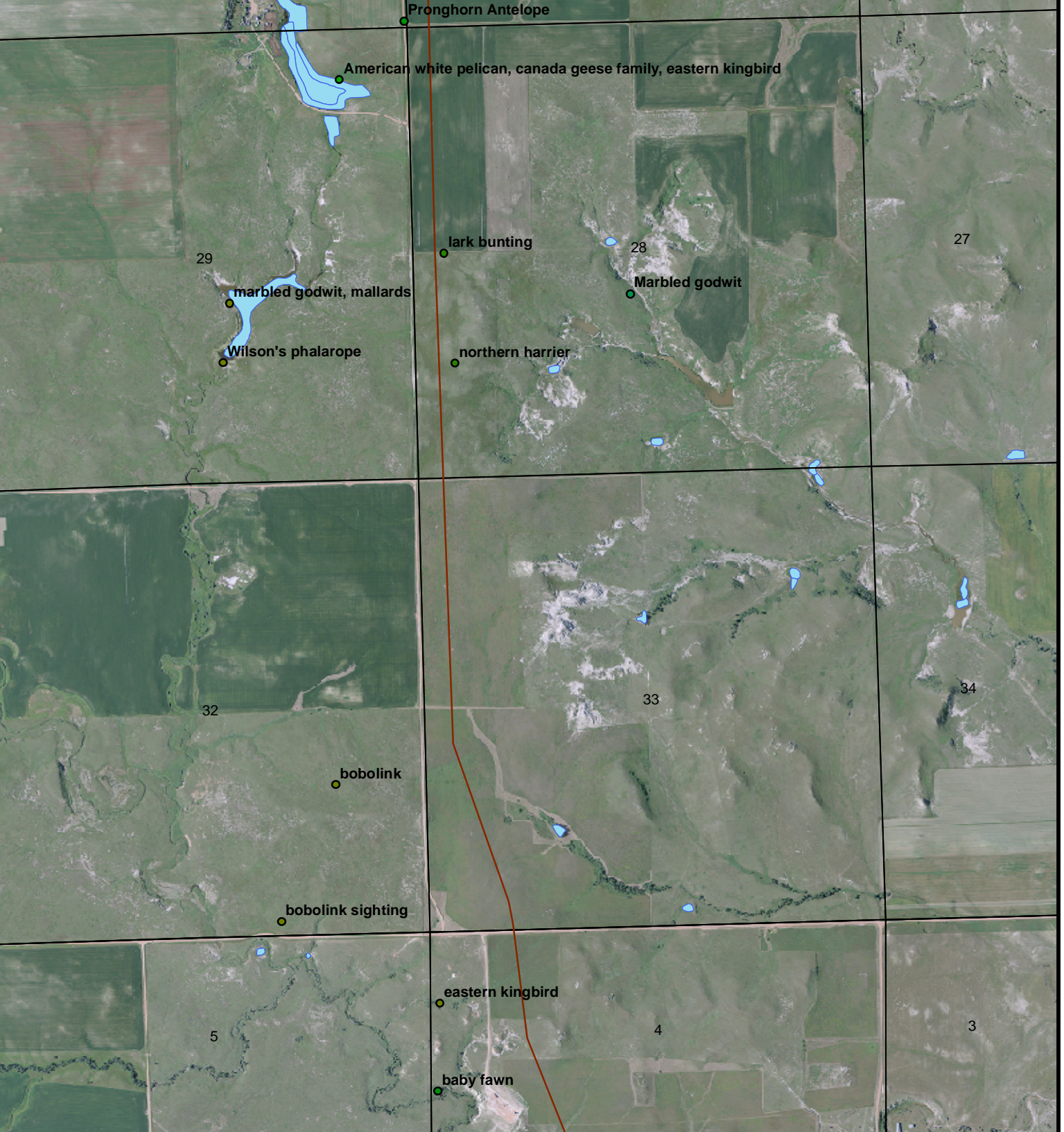
- Three_Affiliated_Tribes_Land
- PLSS Sections
- FWS Wetland Inventory
- Update_PipelineRoute_8_30_10
- Prairie Dog Colony
- ! Nests



Bridger Pipeline LLC
 455 North Poplar Street
 Casper, Wyoming 82602

Wildlife Map 20
 12-Inch Crude Oil Pipeline
 US Fish and Wildlife Service
 September 2010

0 1,250 2,500 5,000 Feet



Legend

- Three_Affiliated_Tribes_Land
- PLSS Sections
- FWS Wetland Inventory
- Update_PipelineRoute_8_30_10
- Prairie Dog Colony
- ! Nests



Bridger Pipeline LLC
455 North Poplar Street
Casper, Wyoming 82602

Wildlife Map 21
 12-Inch Crude Oil Pipeline
 US Fish and Wildlife Service
 September 2010



Legend

- Three_Affiliated_Tribes_Land
- Update_PipelineRoute_8_30_10
- PLSS Sections
- Prairie Dog Colony
- FWS Wetland Inventory
- ! Nests



Bridger Pipeline LLC
455 North Poplar Street
Casper, Wyoming 82602

Wildlife Map 22
 12-Inch Crude Oil Pipeline
 US Fish and Wildlife Service
 September 2010



Legend

- Three_Affiliated_Tribes_Land
- Update_PipelineRoute_8_30_10
- PLSS Sections
- Prairie Dog Colony
- FWS Wetland Inventory
- ! Nests



Bridger Pipeline LLC
455 North Poplar Street
Casper, Wyoming 82602

Wildlife Map 23
 12-Inch Crude Oil Pipeline
 US Fish and Wildlife Service
 September 2010

0 1,150 2,300 4,600 Feet



Legend

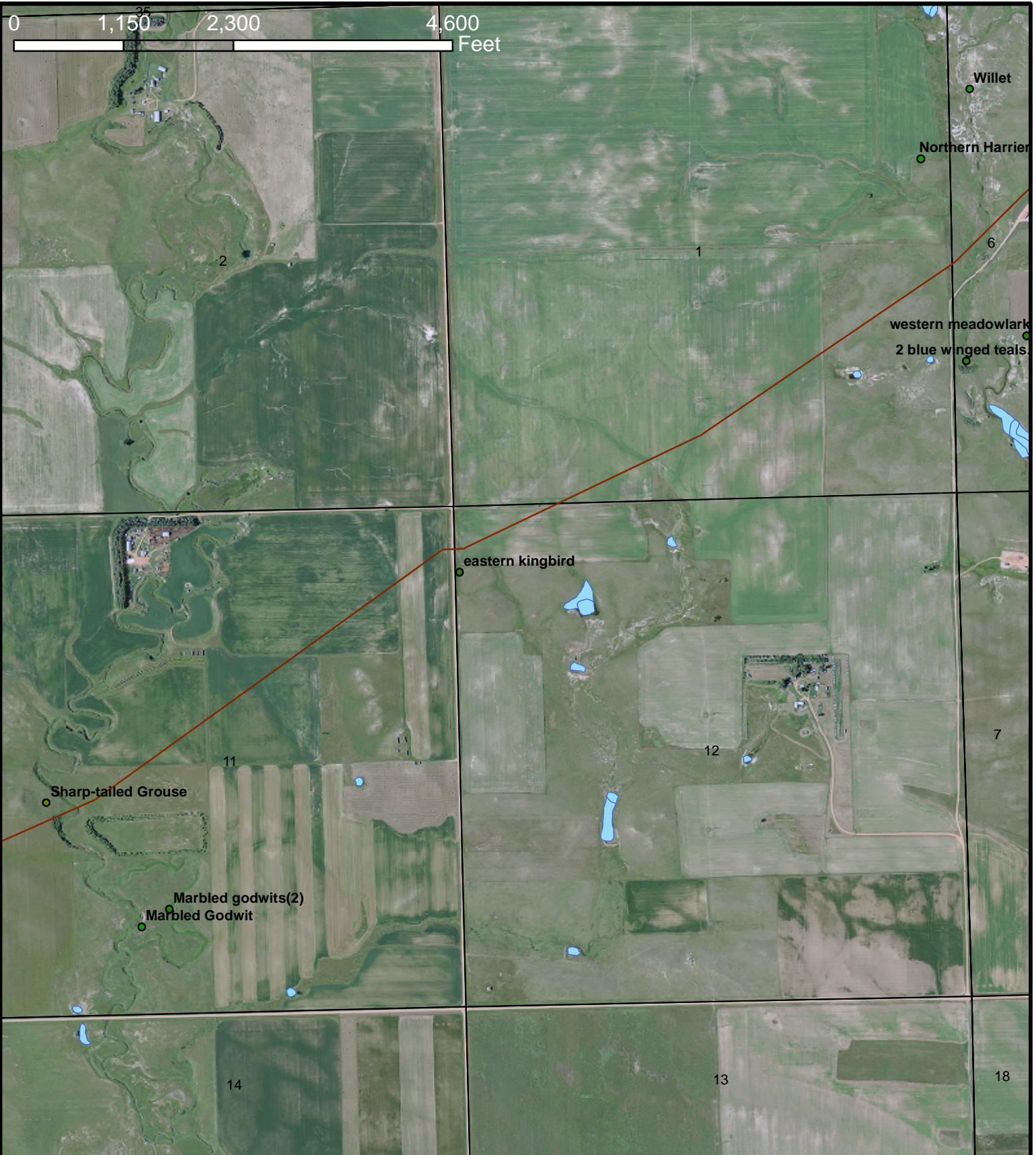
- Three_Affiliated_Tribes_Land
- PLSS Sections
- FWS Wetland Inventory
- Prairie Dog Colony
- Nests
- Update_PipelineRoute_8_30_10



Bridger Pipeline LLC
455 North Poplar Street
Casper, Wyoming 82602

Wildlife Map 24
 12-Inch Crude Oil Pipeline
 US Fish and Wildlife Service
 September 2010

0 1,150 2,300 4,600 Feet



Legend

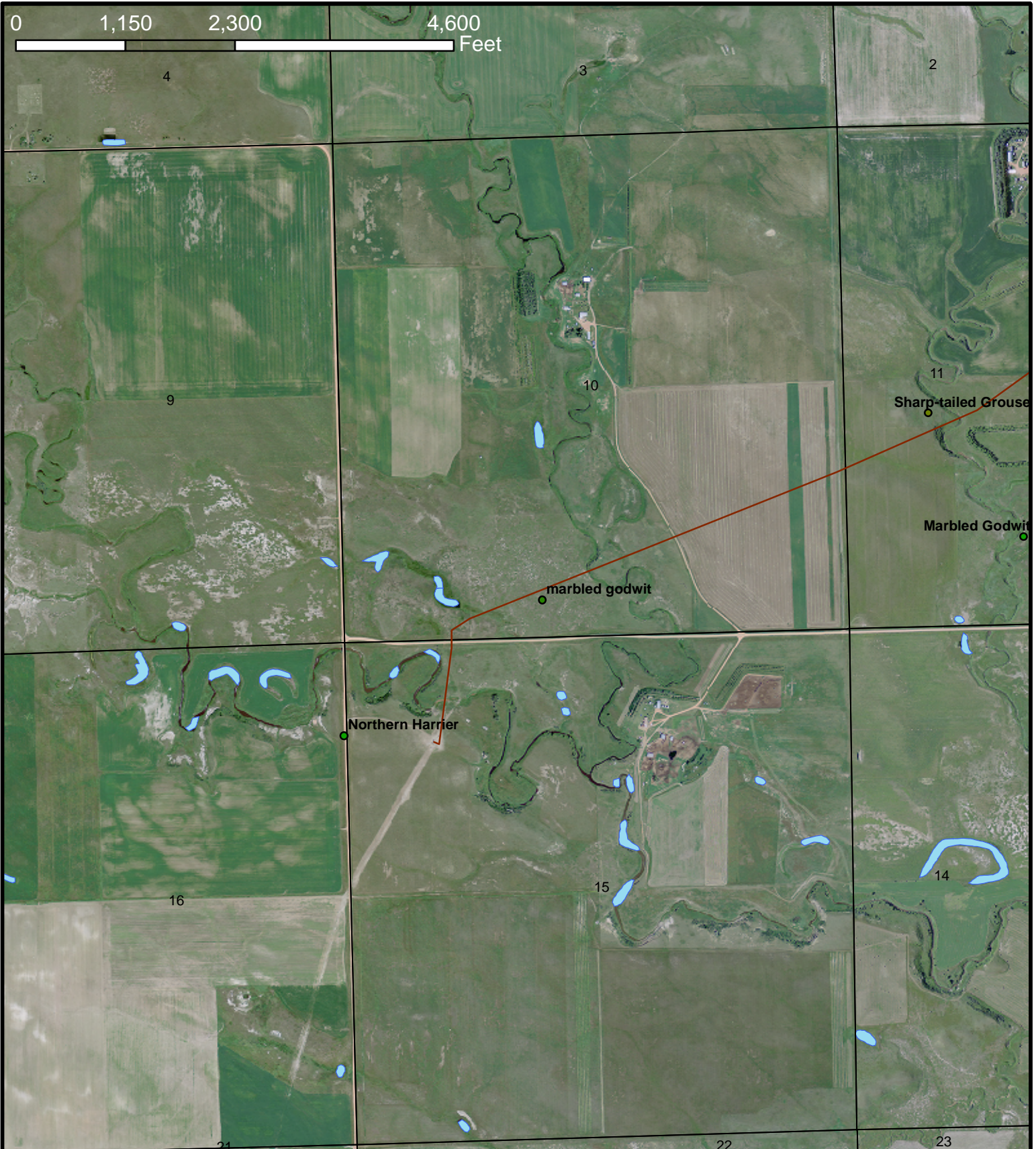
- Three_Affiliated_Tribes_Land
- PLSS Sections
- FWS Wetland Inventory
- Update_PipelineRoute_8_30_10
- Prairie Dog Colony
- ! Nests



Bridger Pipeline LLC
455 North Poplar Street
Casper, Wyoming 82602

Wildlife Map 25
 12-Inch Crude Oil Pipeline
 US Fish and Wildlife Service
 September 2010

0 1,150 2,300 4,600 Feet



Legend

- Three_Affiliated_Tribes_Land
- PLSS Sections
- FWS Wetland Inventory
- Update_PipelineRoute_8_30_10
- Prairie Dog Colony
- ! Nests



Bridger Pipeline LLC
455 North Poplar Street
Casper, Wyoming 82602

Wildlife Map 26
12-Inch Crude Oil Pipeline
US Fish and Wildlife Service
September 2010