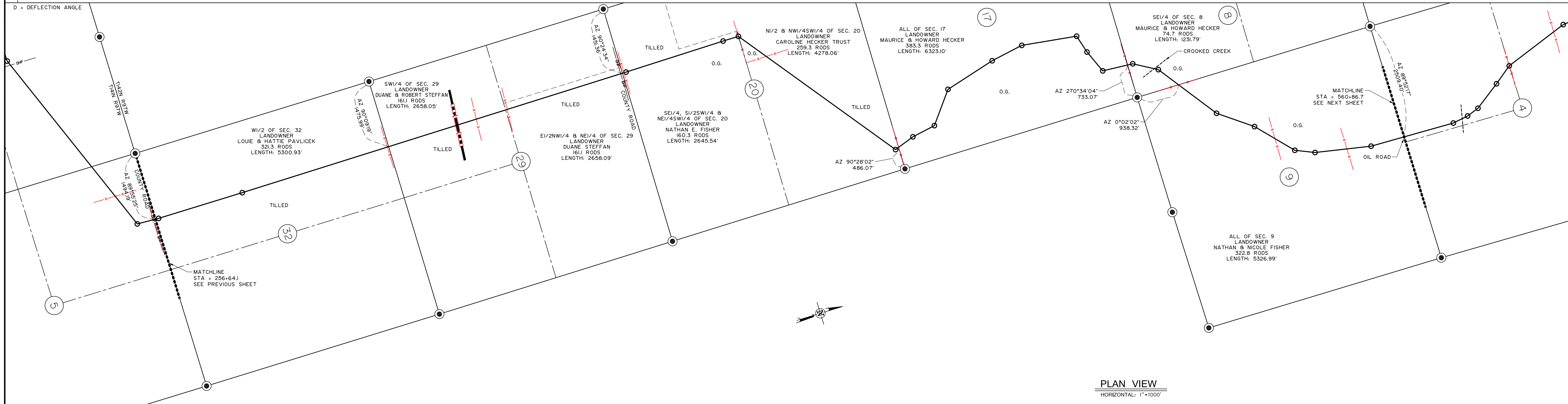
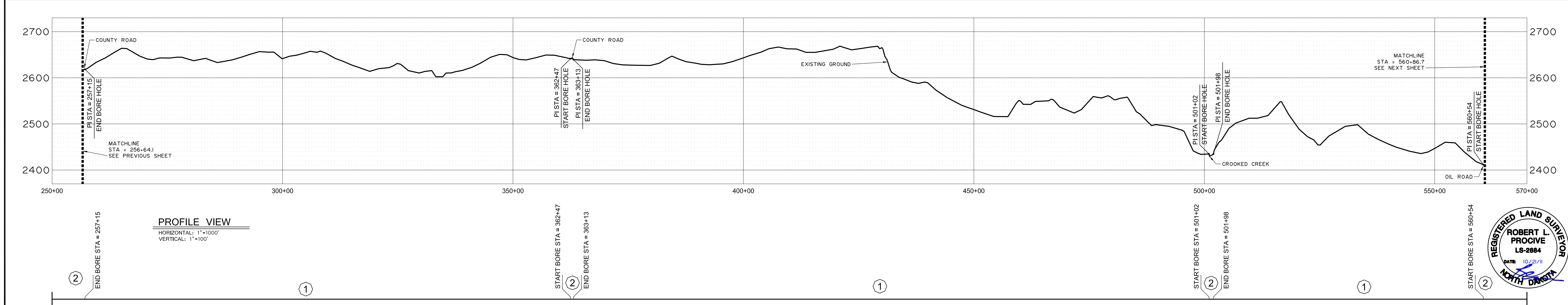


CROSSINGS	SURVEY NOTES	ROUTING NOTES
	256+64.1 SECTION LINE	257+35.4 PI 102°32'
	309+34.5 FENCE	276+35.7 PI 100°21'
	309+65.0 SECTION LINE	
	334+23.1 QUARTER LINE	
	365+82.2 SECTION LINE	363+63.1 PI 100°16'
	399+19.7 FENCE	365+74.3 PI 100°40'
	399+26.7 QUARTER LINE	399+21.4 PI 102°48'
	396+64.5 FENCE	
	432+04.8 SECTION LINE	431+23.7 PI 107°10'
	432+07.8 FENCE	435+89.9 PI 109°54'
		441+16.5 PI 104°58'
		449+56.7 PI 106°32'
		460+98.6 PI 105°28'
		468+22.7 PI 107°58'
		480+29.9 PI 106°19'
		484+40.9 PI 106°44'
		489+72.8 PI 106°32'
		496+41.4 PI 108°04'
	499+27.9 SECTION LINE	502+11.3 PI 102°10'
	501+63.9 FENCE	507+88.0 PI 107°32'
		526+63.3 PI 101°08'
		536+76.8 PI 102°08'
		541+82.2 PI 102°45'
		553+42.8 PI 109°18'
	560+86.7 SECTION LINE	

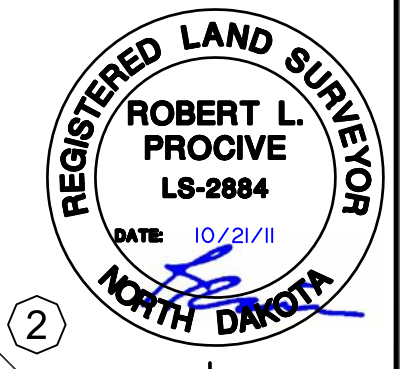
STATIONING CHART
N.T.S.



PLAN VIEW
HORIZONTAL: 1"=1000'



PROFILE VIEW
HORIZONTAL: 1"=1000'
VERTICAL: 1"=100'



LEGEND

○ Section Number	— Foreign Pipe Line	----- Creek
⊕ Interstate Highway	⊕ P/L Warning Sign	- - - - - Fence
⊕ Federal Highway	⊕ Aerial Marker	⊕ Overhead Powerline
⊕ State Highway	⊕ Monument - Recovered	----- Pipeline
	⊕ Monument - Not Recovered (Re-Set)	----- Road
		----- Trees

PIPE DATA

①	DIAMETER: 12.750" WALL THICKNESS: 0.250" MATERIAL: CARBON STEEL X52 ERW COATING: 16 mil FBE
②	DIAMETER: 12.750" WALL THICKNESS: 0.375" MATERIAL: CARBON STEEL X52 ERW COATING: 16 mil FBE + 30 mil ARO

ABBREVIATIONS

CREEK = CREEK CROSSING
FENCE = BARB WIRE FENCE
OHP = OVER HEAD POWER
FPL = FOREIGN PIPELINE
ROAD = COUNTY ROAD OR HIGHWAY
TREES = ROW OR MASS OF TREES

PIGGING FACILITIES		PIPE	
MIN TEST (800 P.S.I.)	MOP (1440 P.S.I.)	MIN TEST (800 P.S.I.)	MOP (1440 P.S.I.)

Tract No.	Ownership	Sec.	T	R	Rev. No.	Description	By	Date	Ckd.

NOTE: FLOW DIRECTION IS FROM KEENE TO SKUNK HILL

Bridger Pipeline LLC
Casper, Wyoming

4BEARS PIPELINE (AS-BUILT)

SKUNK HILL STATION TO HWY 23 STATION
12" CRUDE OIL PIPELINE, AS-BUILT
STA. 256+64.1 TO STA. 560+86.7
DUNN COUNTY, NORTH DAKOTA

DRAWN BY: J. Welch | DATE: JULY 2011 | APPROVED BY: Robert L. Progive | DATE: MAY 2011
SCALE: 1" = 1000' | PROJECT NUMBER: 509-00-161 | DRAWING NUMBER: SHEET 2 OF 15