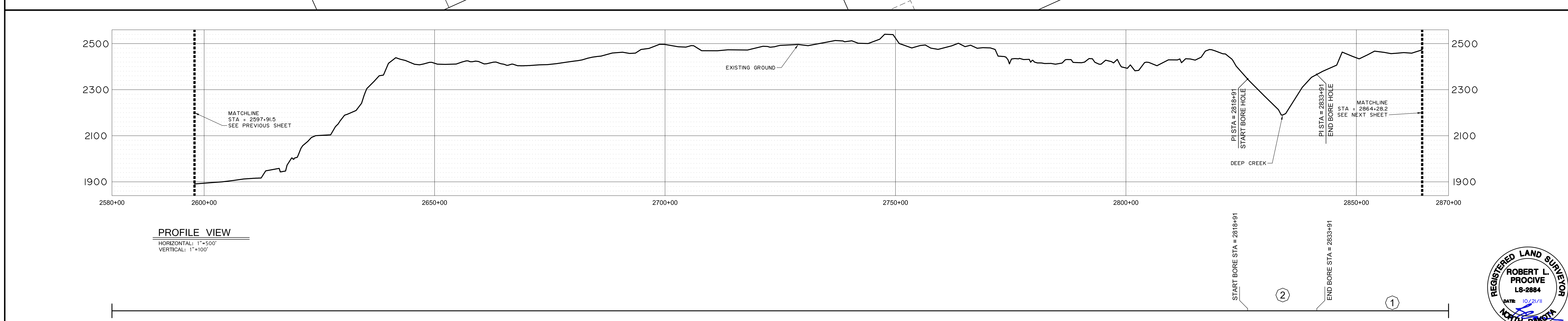
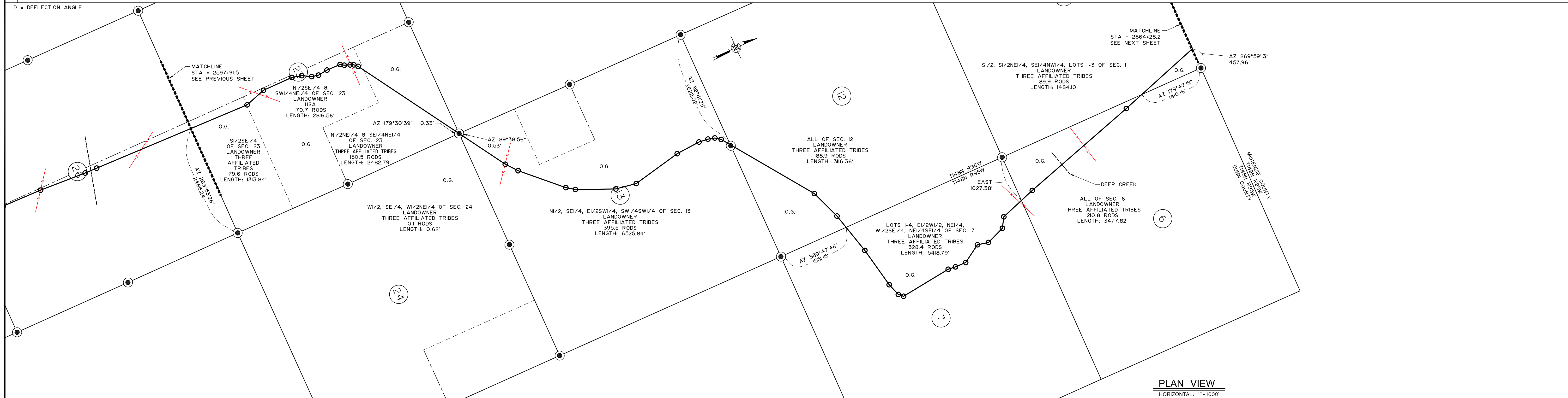


| CROSSINGS | SURVEY NOTES           | ROUTING NOTES   |
|-----------|------------------------|-----------------|
|           | 2597+91.5 SECTION LINE |                 |
|           | 2614+61.9 FENCE        | 2614+61.9 FENCE |
|           | 2636+09.1 FENCE        | 2636+09.1 FENCE |
|           | 2676+07.5 FENCE        | 2676+07.5 FENCE |
|           | 2684+04.6 SECTION LINE |                 |
|           | 2684+05.3 SECTION LINE |                 |
|           | 2729+31 SECTION LINE   |                 |
|           | 2760+47.5 SECTION LINE |                 |
|           | 2844+66.2 SECTION LINE |                 |
|           | 2886+41.4 DEEP CREEK   |                 |
|           | 2832+69.9 FENCE        |                 |
|           | 2849+44.1 SECTION LINE |                 |
|           | 2864+28.2 SECTION LINE |                 |



**LEGEND**

|                      |                                     |                      |
|----------------------|-------------------------------------|----------------------|
| ○ Section Number     | → Foreign Pipe Line                 | ----- Creek          |
| ⊕ Interstate Highway | ⊕ P/L Warning Sign                  | - - - - - Fence      |
| ⊕ Federal Highway    | ⊕ Aerial Marker                     | ⊕ Overhead Powerline |
| ⊕ State Highway      | ⊕ Monument - Recovered              | ----- Pipeline       |
|                      | ⊕ Monument - Not Recovered (Re-Set) | ----- Road           |
|                      |                                     | ----- Trees          |

**PIPE DATA**

|   |  |
|---|--|
| ① | DIAMETER: 12.750" WALL THICKNESS: 0.250"<br>MATERIAL: CARBON STEEL X52 ERW<br>COATING: 16 mil FBE              |
| ② | DIAMETER: 12.750" WALL THICKNESS: 0.375"<br>MATERIAL: CARBON STEEL X52 ERW<br>COATING: 16 mil FBE + 30 mil ARO |

**ABBREVIATIONS**  
 CREEK = CREEK CROSSING  
 FENCE = BARB WIRE FENCE  
 OHP = OVER HEAD POWER  
 FPL = FOREIGN PIPELINE  
 ROAD = COUNTY ROAD OR HIGHWAY  
 TREES = ROW OR MASS OF TREES

| PIGGING FACILITIES    |                   | PIPE                  |                   |
|-----------------------|-------------------|-----------------------|-------------------|
| MIN TEST (800 P.S.I.) | MOP (1440 P.S.I.) | MIN TEST (800 P.S.I.) | MOP (1440 P.S.I.) |
|                       |                   |                       |                   |

| Tract No. | Ownership | Sec. | T | R |
|-----------|-----------|------|---|---|
|           |           |      |   |   |

**REVISIONS**

| Rev. No. | Description | By | Date | Ckd. |
|----------|-------------|----|------|------|
|          |             |    |      |      |

NOTE: FLOW DIRECTION IS FROM KEENE TO SKUNK HILL

**BRIDGER** Bridger Pipeline LLC  
Casper, Wyoming

**4BEARS PIPELINE (AS-BUILT)**

SKUNK HILL STATION TO HWY 23 STATION  
12" CRUDE OIL PIPELINE, AS-BUILT  
STA. 2597+91.5 TO STA. 2864+28.2  
DUNN COUNTY, NORTH DAKOTA

INTERSTATE ENGINEERING  
Professional seal, stamp per state

DRAWN BY: J. Welch | DATE: JULY 2011 | APPROVED BY: Robert L. Procvic | DATE: MAY 2011  
 SCALE: 1" = 1000' | PROJECT NUMBER: 509-00-161 | DRAWING NUMBER: SHEET 10 OF 15

