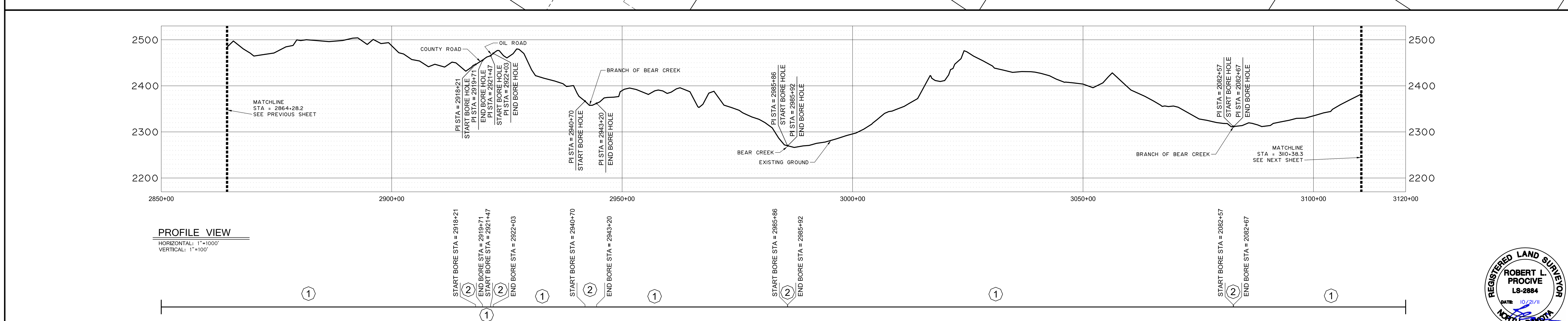
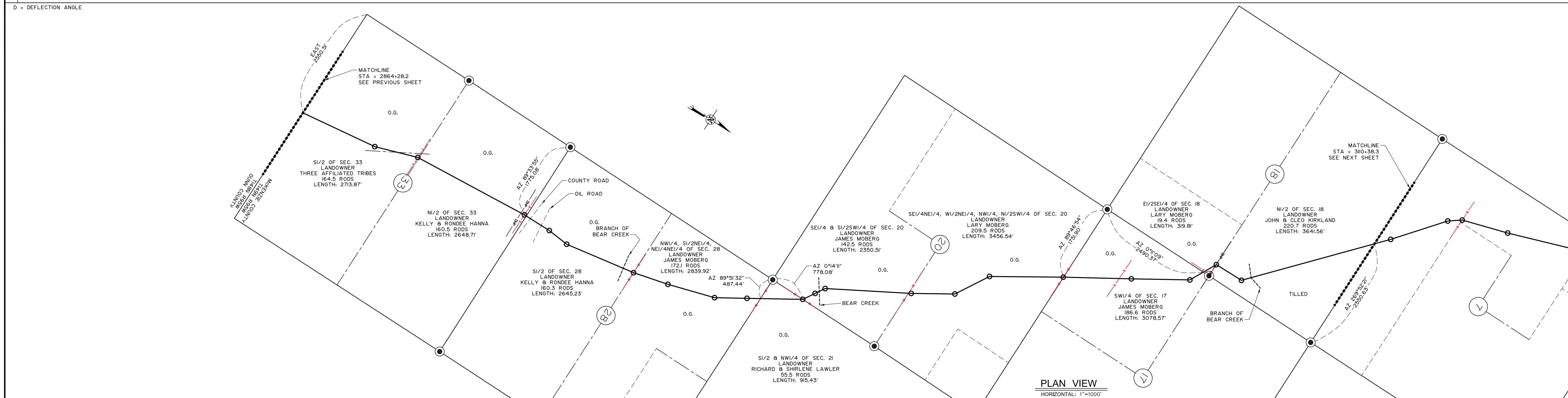


CROSSINGS	SURVEY NOTES	ROUTING NOTES
	2864+28.2 SECTION LINE	
	2886+56.2 FPL	2884+5.0 PI 0°03'
	2891+18.4 FENCE	2891+5.0 PI 04°12'
	2911+90.7 SECTION LINE	2907+43.1 PI 02°54'
	2916+53.7 OHP	2923+8.0 PI 05°59'
	2918+55.7 COUNTY ROAD	2928+6.1 PI 05°08'
	2921+74.9 OIL ROAD	
	2941+56.3 BRANCH OF BEAR CREEK	2944+37.9 PI 04°22'
	2944+39.1 FENCE	2952+2.1 PI 02°43'
	2972+78.7 FENCE	2962+7.5 PI 04°32'
	2972+75.9 SECTION LINE	2966+8.5 PI 00°05'
	2981+93.3 SECTION LINE	2984+92.0 PI 02°50'
	2985+89.1 BEAR CREEK	2984+90.3 PI 00°06'
		2987+3.5 PI 02°09'
	3005+42.7 FENCE	3006+0.0 PI 02°29'
		3004+60.0 PI 02°55'
		3023+9.5 PI 02°22'
	3039+92.4 FENCE	3039+9.4 PI 00°53'
		3052+04.9 FENCE
		3054+68.9 PI 00°24'
	3071+5.6 FENCE	3067+38.7 PI 03°00'
	3073+89.9 OHP	3074+02.0 PI 06°58'
	3073+99.3 FENCE	3074+02.0 PI 06°58'
	3081+68.8 BRANCH OF BEAR CREEK	3080+48.3 PI 04°20'
	310+38.3 SECTION LINE	



LEGEND

○ Section Number	→ Foreign Pipe Line	----- Creek
⊖ Interstate Highway	⊖ P/L Warning Sign	- - - - - Fence
⊖ Federal Highway	⊖ Aerial Marker	⊖ Overhead Powerline
⊖ State Highway	⊖ Monument - Recovered	----- Pipeline
	⊖ Monument - Not Recovered (Re-Set)	----- Road
		----- Trees

PIPE DATA

①	DIAMETER: 12.750" WALL THICKNESS: 0.250" MATERIAL: CARBON STEEL X52 ERW COATING: 16 mil FBE
②	DIAMETER: 12.750" WALL THICKNESS: 0.375" MATERIAL: CARBON STEEL X52 ERW COATING: 16 mil FBE + 30 mil ARO

ABBREVIATIONS

CREEK = CREEK CROSSING
FENCE = BARB WIRE FENCE
OHP = OVER HEAD POWER
FPL = FOREIGN PIPELINE
ROAD = COUNTY ROAD OR HIGHWAY
TREES = ROW OR MASS OF TREES

PIGGING FACILITIES		PIPE	
MIN TEST (800 P.S.I.)	MOP (1440 P.S.I.)	MIN TEST (800 P.S.I.)	MOP (1440 P.S.I.)

Tract No.	Ownership	Sec.	T	R

REVISIONS

Rev. No.	Description	By	Date	Ckd.

NOTE: FLOW DIRECTION IS FROM KEENE TO SKUNK HILL

BRIDGER Bridger Pipeline LLC
Casper, Wyoming

4BEARS PIPELINE (AS-BUILT)

SKUNK HILL STATION TO HWY 23 STATION
12" CRUDE OIL PIPELINE, AS-BUILT
STA. 2864+28.2 TO STA. 3110+38.3
MCKENZIE COUNTY, NORTH DAKOTA

DRAWN BY: J. Welch | DATE: JULY 2011 | APPROVED BY: Robert L. Procvic | DATE: MAY 2011
SCALE: 1" = 1000' | PROJECT NUMBER: 509-00-161 | DRAWING NUMBER: SHEET II OF 15

REGISTERED LAND SURVEYOR
ROBERT L. PROCVIC
LS-2884
DATE: 10/2/11
NORTH DAKOTA