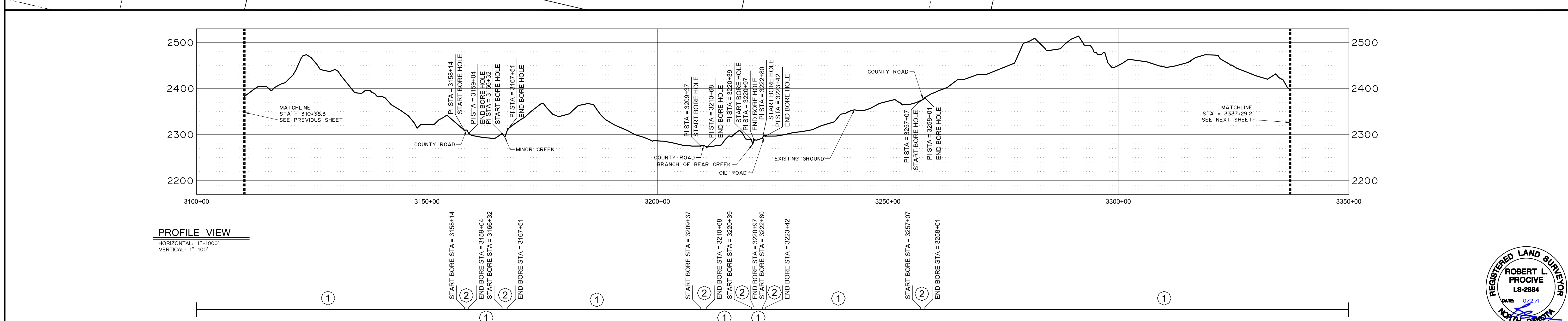
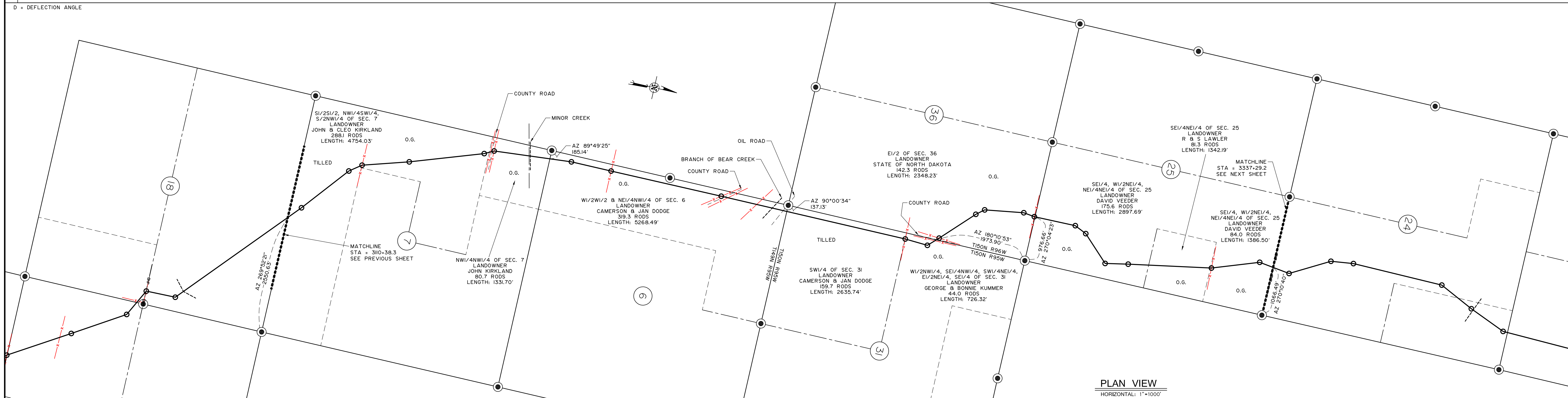


CROSSINGS	SURVEY NOTES	ROUTING NOTES
		310+38.3 SECTION LINE
		314+02.5 PI D2°30'
		327+03.8 PI D4°09'
		330+17.9 PI D9°44'
		340+44.2 PI D2°17'
		356+80.4 PI D8°16'
		359+02.9 PI D2°34'
		375+58.9 PI D0°04'
		384+80.1 PI D0°11'
		3209+33.3 PI D0°13'
		3250+30.3 PI D2°54'
		3255+26.8 PI D4°27'
		3256+29.3 PI D1°36'
		3267+78.0 PI D6°23'
		3269+92.8 PI D3°07'
		3276+44.0 PI D6°23'
		3280+85.3 PI D8°44'
		3289+98.8 PI D2°00'
		3292+65.7 PI D9°44'
		3300+58.7 PI D0°13'
		3305+58.7 PI D0°58'
		3300+00.5 QUARTER LINE
		3323+64.6 PI D9°27'
		3323+66.0 FENCE
		3337+29.2 SECTION LINE



LEGEND

○ Section Number	→ Foreign Pipe Line	----- Creek
⊖ Interstate Highway	⊖ P/L Warning Sign	- - - - - Fence
⊖ Federal Highway	⊖ Aerial Marker	⊖ Overhead Powerline
⊖ State Highway	⊖ Monument - Recovered	----- Pipeline
	⊖ Monument - Not Recovered (Re-Set)	----- Road
		----- Trees

PIPE DATA

①	DIAMETER: 12.750" WALL THICKNESS: 0.250" MATERIAL: CARBON STEEL X52 ERW COATING: 16 mil FBE
②	DIAMETER: 12.750" WALL THICKNESS: 0.375" MATERIAL: CARBON STEEL X52 ERW COATING: 16 mil FBE + 30 mil ARO

ABBREVIATIONS
CREEK = CREEK CROSSING
FENCE = BARB WIRE FENCE
OHP = OVER HEAD POWER
FPL = FOREIGN PIPELINE
ROAD = COUNTY ROAD OR HIGHWAY
TREES = ROW OR MASS OF TREES

PIGGING FACILITIES		PIPE	
MIN TEST (800 P.S.I.)	MOP (1440 P.S.I.)	MIN TEST (800 P.S.I.)	MOP (1440 P.S.I.)

Tract No.	Ownership	Sec.	T	R

REVISIONS

Rev. No.	Description	By	Date	Ckd.

NOTE: FLOW DIRECTION IS FROM KEENE TO SKUNK HILL

BRIDGER Bridger Pipeline LLC
Casper, Wyoming

4BEARS PIPELINE (AS-BUILT)

SKUNK HILL STATION TO HWY 23 STATION
12" CRUDE OIL PIPELINE, AS-BUILT
STA. 3110+38.3 TO STA. 3337+29.2
MCKENZIE COUNTY, NORTH DAKOTA

DRAWN BY: J. Welch | DATE: JULY 2011 | APPROVED BY: Robert L. Procrive | DATE: MAY 2011
SCALE: 1" = 1000' | PROJECT NUMBER: 509-00-161 | DRAWING NUMBER: SHEET 12 OF 15

REGISTERED LAND SURVEYOR
ROBERT L. PROCIVE
LS-2884
DATE: 10/21/11
NORTH DAKOTA