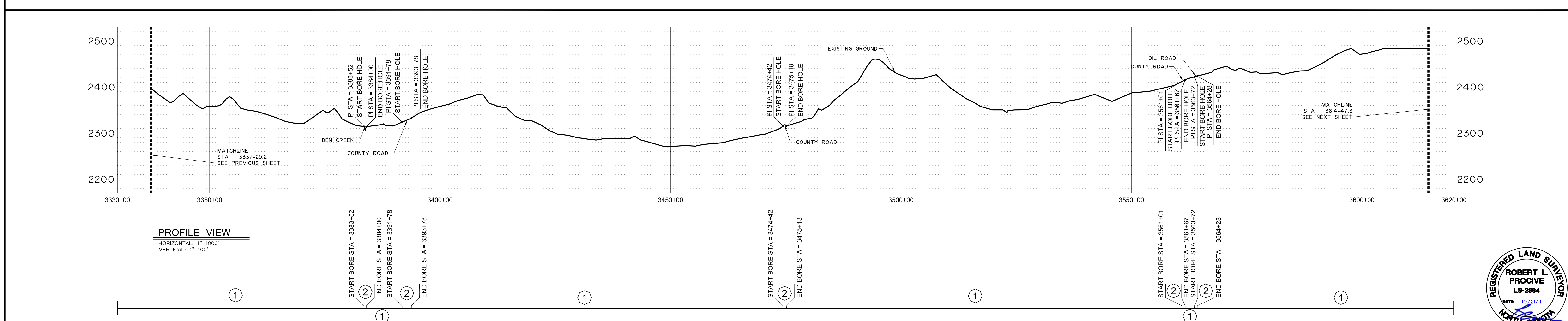
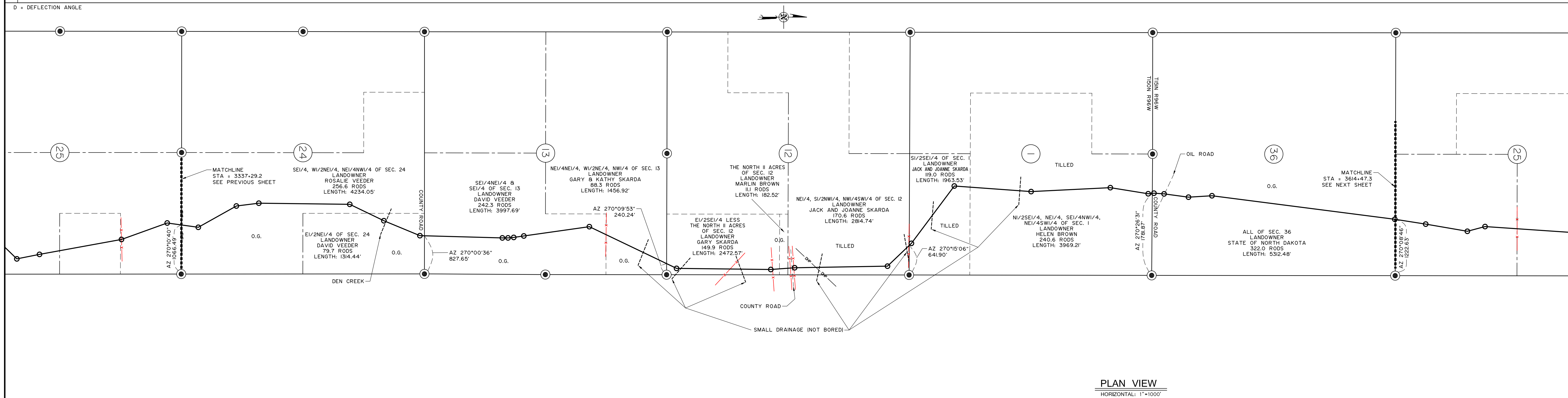


CROSSINGS	SURVEY NOTES	ROUTING NOTES
		3337-29.2 SECTION LINE
		334+00.6 PI D37+07 3350+47.2 PI D22+08 3350+38.0 PI D7+48
		3379-63.2 SIXTEENTH LINE
		3379+11.2 PI D25+01 3383+81.3 DEN CREEK 3391+70.2 PI D20+59
		3392-77.7 ND HIGHWAY 73
		3400+65.0 PI D22+27 3412+16.4 PI D2+53 3444+37.2 PI D0+02
		3428+75.5 PI D33+41
		3432-25.4 SIXTEENTH LINE
		3447-32.3 SECTION LINE
		3449+70.8 PI D24+59
		3470+16.0 PI D4+48 3472+04.9 PARCEL LINE 3473+87.4 QUARTER LINE 3475+34.0 PI D3+39
		3461-33.4 FENCE 3463-63.9 SMALL DRAINAGE (NOT BORED) 3470-55.2 FENCE 3474-41.6 FENCE 3474+79.8 COUNTY ROAD 3475+17.3 FENCE 3479+87.3 OHP 3480+25.8 SMALL DRAINAGE (NOT BORED)
		3495+48.9 PI D42+45
		3502-02.1 SECTION LINE
		3502+60.6 PI D9+28
		3509-21.9 PI D37+21
		3509-65.7 SIXTEENTH LINE
		3534+35.5 PI D6+59
		3550+13.4 PI D0+59
		3550+45.5 PI D4+72 3552+13.5 PI D9+72 3563+91.4 PI D3+48
		3561-34.9 SECTION LINE
		3561+45.6 COUNTY ROAD 3564+00.3 OIL ROAD
		3574+36.0 PI D0+48
		3644-47.3 SECTION LINE
		3644+36.0 PI D1+30



LEGEND

○ Section Number	→ Foreign Pipe Line	----- Creek
⊖ Interstate Highway	⊖ P/L Warning Sign	- - - - - Fence
⊖ Federal Highway	⊖ Aerial Marker	⊖ Overhead Powerline
⊖ State Highway	⊖ Monument - Recovered	----- Pipeline
	⊖ Monument - Not Recovered (Re-Set)	----- Road
		----- Trees

PIPE DATA

①	DIAMETER: 12.750" WALL THICKNESS: 0.250" MATERIAL: CARBON STEEL X52 ERW COATING: 16 mil FBE
②	DIAMETER: 12.750" WALL THICKNESS: 0.375" MATERIAL: CARBON STEEL X52 ERW COATING: 16 mil FBE + 30 mil ARO

ABBREVIATIONS

CREEK = CREEK CROSSING
FENCE = BARB WIRE FENCE
OHP = OVER HEAD POWER
FPL = FOREIGN PIPELINE
ROAD = COUNTY ROAD OR HIGHWAY
TREES = ROW OR MASS OF TREES

PIGGING FACILITIES		PIPE	
MIN TEST (800 P.S.I.)	MOP (1440 P.S.I.)	MIN TEST (800 P.S.I.)	MOP (1440 P.S.I.)

Tract No.	Ownership	Sec.	T	R

REVISIONS

Rev. No.	Description	By	Date	Ckd.

NOTE: FLOW DIRECTION IS FROM KEENE TO SKUNK HILL

BRIDGER Bridger Pipeline LLC
Casper, Wyoming

4BEARS PIPELINE (AS-BUILT)

SKUNK HILL STATION TO HWY 23 STATION
12" CRUDE OIL PIPELINE, AS-BUILT
STA. 3337+29.2 TO STA. 3614+47.3
MCKENZIE COUNTY, NORTH DAKOTA

DRAWN BY: J. Welch | DATE: JULY 2011 | APPROVED BY: Robert L. Provice | DATE: MAY 2011
SCALE: 1" = 1000' | PROJECT NUMBER: 509-00-161 | DRAWING NUMBER: SHEET 13 OF 15

ROBERT L. PROVICE
REGISTERED LAND SURVEYOR
LS-2884
DATE: 10/21/11
NORTH DAKOTA