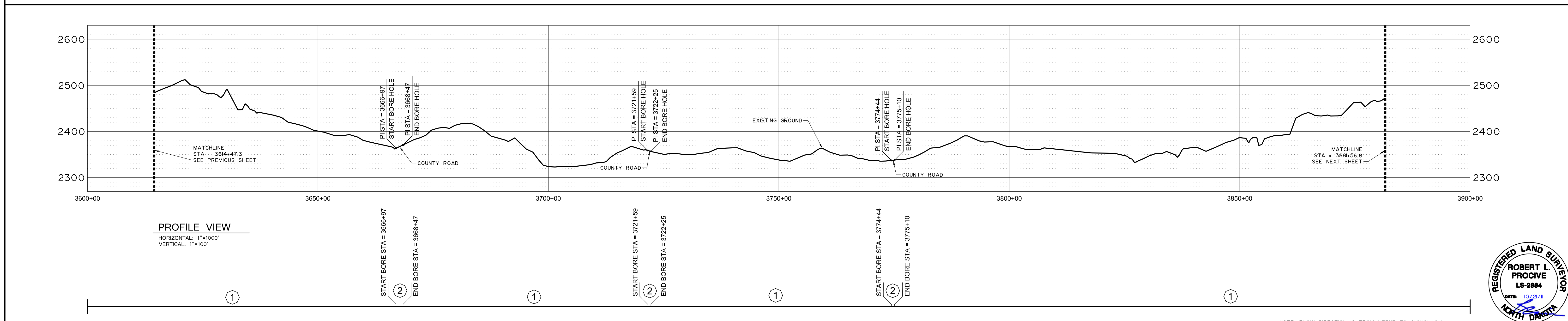
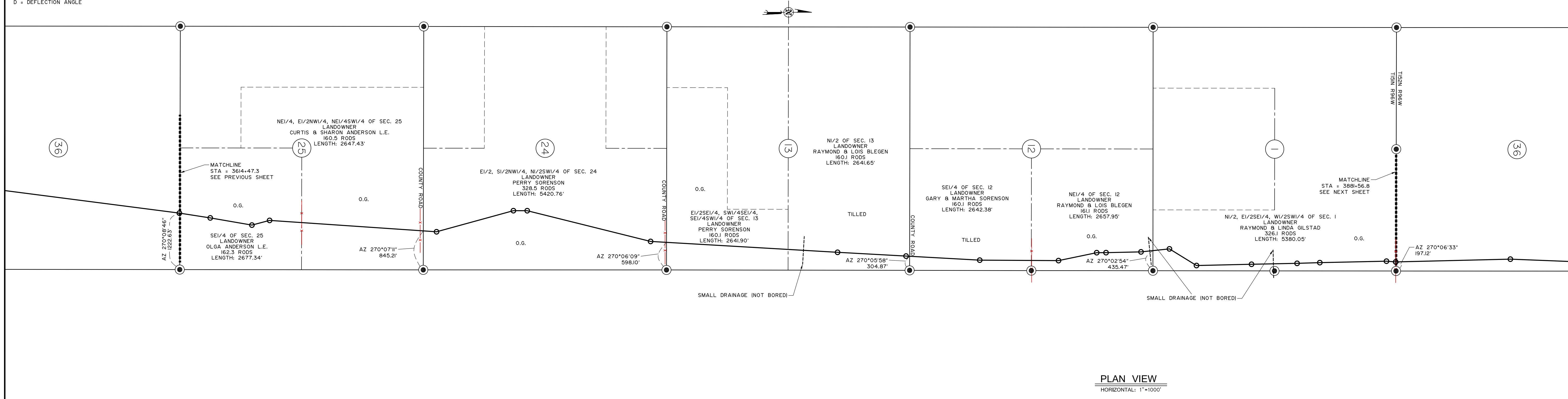


CROSSINGS	SURVEY NOTES	ROUTING NOTES
	3614+47.3 SECTION LINE	3621+4.4 PI D0°57' 3630+34.5 PI D24°40' 3634+28.6 PI D18°46'
	3641+24.7 QUARTER LINE	3641+24.7 QUARTER LINE
	3667+72.1 SECTION LINE	3670+59.1 PI D0°14' 3687+87.9 PI D0°21' 3690+86.0 PI D0°57'
	3721+60.0 FENCE 3721+51.1 COUNTY ROAD	3718+46.5 PI D0°39'
	3748+34.8 QUARTER LINE	3759+10.0 PI D0°10'
	3794886 SMALL DRAINAGE (NOT BORED)	
	3774+76.4 SECTION LINE	3773+98.4 PI D0°00'
	3801+24.8 FENCE	3789+98.4 PI D2°49'
		3807+09.1 PI D2°03'
		3804+54.9 PI D1°39' 3811+57.8 PI D1°11'
		3825+16.4 PI D4°46'
		3831+37.0 PI D3°36'
		3838+25.8 PI D3°13'
		3850+20.3 PI D0°09'
		3860+08.6 PI D0°40'
		3864+02.3 PI D0°35'
	3881+56.8 SECTION LINE	3879+48.0 PI D0°55' 3881+43.3 PI D6°03'



LEGEND

○ Section Number	→ Foreign Pipe Line	----- Creek
⊕ Interstate Highway	⊕ P/L Warning Sign	- - - - - Fence
⊕ Federal Highway	⊕ Aerial Marker	⊕ Overhead Powerline
⊕ State Highway	⊕ Monument - Recovered	----- Pipeline
	⊕ Monument - Not Recovered (Re-Set)	----- Road
		----- Trees

PIPE DATA

①	DIAMETER: 12.750" WALL THICKNESS: 0.250" MATERIAL: CARBON STEEL X52 ERW COATING: 16 mil FBE
②	DIAMETER: 12.750" WALL THICKNESS: 0.375" MATERIAL: CARBON STEEL X52 ERW COATING: 16 mil FBE + 30 mil ARO

ABBREVIATIONS

CREEK = CREEK CROSSING
FENCE = BARB WIRE FENCE
OHP = OVER HEAD POWER
FPL = FOREIGN PIPELINE
ROAD = COUNTY ROAD OR HIGHWAY
TREES = ROW OR MASS OF TREES

PIGGING FACILITIES		PIPE	
MIN TEST (800 P.S.I.)	MOP (1440 P.S.I.)	MIN TEST (800 P.S.I.)	MOP (1440 P.S.I.)

Tract No.	Ownership	Sec.	T	R

REVISIONS

Rev. No.	Description	By	Date	Ckd.

NOTE: FLOW DIRECTION IS FROM KEENE TO SKUNK HILL

BRIDGER Bridger Pipeline LLC
Casper, Wyoming

4BEARS PIPELINE (AS-BUILT)

SKUNK HILL STATION TO HWY 23 STATION
12" CRUDE OIL PIPELINE, AS-BUILT
STA. 3614+47.3 TO STA. 3881+56.8
MCKENZIE COUNTY, NORTH DAKOTA

INTERSTATE ENGINEERING
Professional seal, paper per law

Interstate Engineering Inc.
1725 1st Ave. SW
Billings, North Dakota 58101
Ph: (701) 241-2251
www.interstateeng.com

DRAWN BY: J. Welch DATE: JULY 2011 APPROVED BY: Robert L. Procvic DATE: MAY 2011
SCALE: 1" = 1000' PROJECT NUMBER: 509-00-161 DRAWING NUMBER: SHEET 14 OF 15

