

BRIDGER PIPELINE LLC

Environmental Division

Bob Dundas, P.G., Environmental Coordinator
Kate Forsting, Assistant Environmental Coordinator

Reply to:

P.O. Drawer 2360 (82602)
455 North Poplar
Casper, WY 82601
Phone: (307) 237-9301
Fax: (307) 266-0357

January 6, 2014

Patrick Fahn
Public Service Commission
600 E. Boulevard, Dept. 408
Bismarck, ND 58505-0480



RE: Case No. PU-09-750 – Four Bears Pipeline Tree/Shrub Mitigation Update

Dear Mr. Fahn:

As an update to the subject corridor number 115 and route permit number 125, Bridger Pipeline LLC Bridger Pipeline LLC is providing the 2013 annual report prepared by the North Dakota Forest Service to satisfy the requirements of the PSC tree and shrub mitigation related permit conditions.

Bridger Pipeline LLC continues to be excited about this partnership with the NDFS and is pleased to report that a total of 66,135 trees and shrubs have been planted on 151 sites during the first two years of this project. Continued success oriented results are anticipated in 2014 as the planting activity continues.

Please call me at (307) 266-0411 or email at bob.dundas@truecos.com should you require any additional information.

Sincerely,

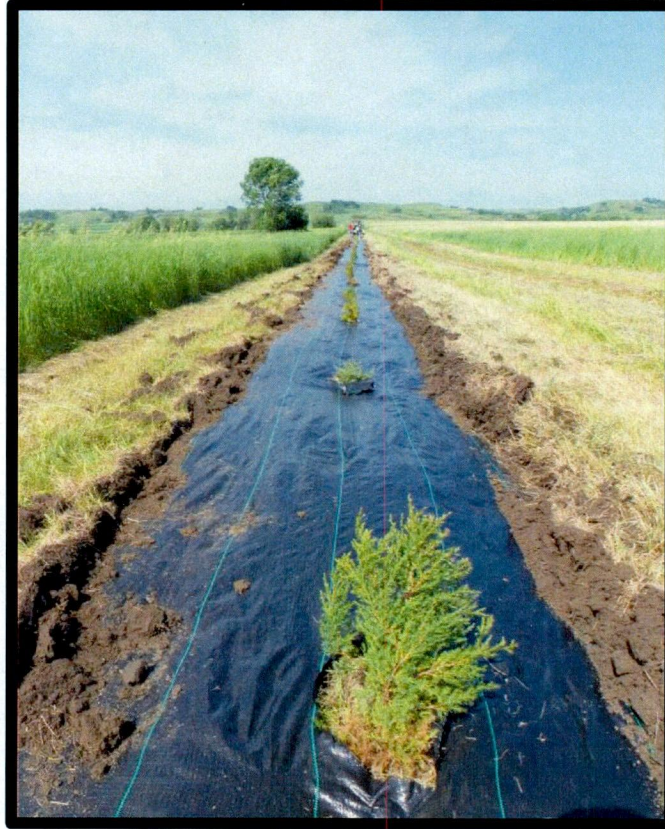
Bob Dundas, P.G.
Environmental Coordinator

Attachments

File: BPLLC Four Bears Pipeline

Four Bears Pipeline Tree Mitigation

2013 Project Status Update



Prepared for:

Bob Dundas

Bridger Pipeline, LLC

PO Drawer 2360

Casper, WY 82602



Larry Kotchman, State Forester
NDSU- North Dakota Forest Service
307 First Street East
Bottineau ND 58318

December 31, 2013

Overview

Mitigation criteria established by the Public Service Commission (PSC) ensures that trees and shrubs lost or destroyed during construction projects are replaced at a 2:1 ratio. As a result of the Four Bears Pipeline (a Bridger Pipeline, LLC Project,) up to a maximum number of 97,278 trees and shrubs must be planted to satisfy the mitigation requirements for this project. An additional number of trees and shrubs will be planted to offset unanticipated mortality. If at the end of three growing seasons it is determined that 75% of the replacement trees and shrubs planted are not living, ND Forest Service (NDFS) will replant an adequate number of trees to satisfy the offset mortality and reach 75% or greater success rate. Landowners impacted by the project have been offered a choice of having replacement trees and shrubs planted on their property or planted elsewhere at alternative locations. The remaining number of trees and shrubs will be planted at alternative locations through cooperative projects with tree planting entities and private landowners.

The NDFS is administering a mitigation tree planting program in cooperation with local soil conservation districts and private tree planting vendors. Interested landowners desiring to establish appropriate conservation tree plantings may apply with the NDFS for assistance. Eligible landowners will be encouraged to work directly with local soil conservation district partners and private tree planting vendors to secure professional tree planting design assistance and tree planting services. Mitigation project funding will be made available for a variety of conservation tree planting practices that are not otherwise eligible for cost-share. These practices will be designed using the standard USDA conservation tree planting plan (CONS-4). Conservation practice specifications will be influenced by species suitability, soil characteristics, topography, land-use and the landowner's objectives. Eligible conservation tree planting practices include, but are not limited to, living snow fences, windbreaks, wildlife plantings, riparian restoration and buffers, and vegetative fuel breaks.

2013 Update

Excellent progress has been made in the implementation of the mitigation plan, with a total of 66,135 trees and shrubs planted on 151 sites during the first two years of this project. Please refer to the attached Appendix A for detailed planting information.

In November 2013, the NDFS offered grants to 132 landowners to plant over 58,000 trees and shrubs in 2014. In addition to these "statewide" off-site projects, the NDFS has contractors working one-on-one with impacted landowners to satisfy their individual tree and shrub mitigation needs. With these plans in place, this tree and shrub mitigation project is on track to be completed by December 31, 2014.

The following table describes the activities to be undertaken and the status of each as of December 31, 2013.

Activity	Status December 2013
North Dakota Forest Service (NDFS) develops tree planting summary sheet for Soil Conservation Districts (SCDs) and vendors outlining Mitigation Tree Planting Partnership procedures.	Completed.
Contact county SCD offices to explain the Mitigation Tree Planting Partnership framework. Application materials are made available.	Completed.
NDFS provides contact information for impacted landowners and tree/shrub needs to vendors.	Completed.
Prepare a tree/shrub spreadsheet to track accomplishments and survival by county, landowner and site.	Completed.
SCD or vendor meets with landowner on site to design tree planting. All plantings will follow conservation practice specifications and ND CONS-4 (tree planting planning worksheets) are completed.	Ongoing.
Plans are reviewed by NDFS. NDFS develops award letters and agreements. Agreements are signed with landowners.	28,380 conservation trees and shrubs were planted on 89 sites in 2013. 37,755 conservation trees and shrubs were planted on 62 sites in 2012.
Class I & III Cultural Resource Surveys are completed by qualified contractor.	Ongoing.
Sites are prepared for tree planting by mechanical or chemical means. Trees are ordered from nurseries. Trees are delivered from nurseries and stored in coolers. Site is inspected and staked for planting. Trees are planted. Fabric weed barrier is installed.	April-November 2012, 2013, 2014.
Invoice sent to NDFS. Reimbursements made through NDSU Business Office.	Ongoing.
Landowners maintain projects as per agreement.	Ten year agreements initiated in 2012, 2013, 2014.

Appendix A- Planting Information

2013- Conservation Trees						
County	Quarter	Section	Township	Range	Trees Planted	
Barnes	NW	20	138	61	224	
Billings	SE	19	139	100	234	
Bottineau	NE	14	162	75	136	
Bottineau	SW	31	162	76	226	
Bottineau	SE	2	161	76	226	
Bottineau	NE	13	162	76	378	
Burke	SE	32	159	93	334	
Burke	NW	8	162	91	377	
Burleigh	SE	10	143	80	409	
Burleigh	SW	35	141	80	853	
Burleigh	NW	4	140	79	413	
Burleigh	NE	23	138	79	606	
Burleigh	NE	29	137	78	586	
Burleigh	NW	36	140	80	383	
Burleigh	NE	13	137	78	375	
Cavalier	SENE	4	162	58	243	
Dunn	NE	30	145	97	113	
Dunn	SE	4	142	95	463	
Foster	NW	3	145	66	551	
Foster	NW	17	146	64	195	
Golden Valley	NE	15	140	105	180	
Grand Forks	NW	17	154	52	214	
Grand Forks	NE	21	151	51	81	
Grand Forks	NE	21	151	51	272	
Grand Forks	NE	19	151	51	181	
Grand Forks	SW	35	150	50	341	
Grand Forks	SW	12	152	54	146	
Grand Forks	NW	10	150	51	104	
Grant	SW	23	134	89	3	
LaMoure	NE	11	133	59	379	
LaMoure	NW	6	134	66	230	
LaMoure	SW	3	134	64	565	
LaMoure	NE	17	133	64	314	
McLean	SE	17	146	84	985	
McLean	NW	34	143	80	145	
McLean	SW	21	146	82	230	
McLean	NW	9	148	81	207	
McLean	SW	11	143	80	396	
McLean	SW	13	144	82	80	
McLean	NW	25	146	84	104	
McLean	NE/NW	12	147	81	324	
McLean	SW	4	150	78	109	
Mercer	NE	29	145	85	343	
Mercer	SW	28	145	87	93	
Mercer	SW	17	145	84	387	
Mercer	NE	17	144	86	221	
Mercer	SE	32	144	87	446	

Mercer	SE	14	144	89	251
Mercer	SE	25	144	86	172
Mercer	SE	24	141	88	117
Morton	SW	12	138	89	1,384
Oliver	SW	32	143	81	2,394
Pembina	SW	9	160	53	137
Pembina	SW	36	162	54	132
Pembina	NW	4	162	56	118
Pembina	NW	32	162	56	122
Pembina		9	163	56	385
Pembina	SW	28	162	56	95
Pembina		10 & 14	162	53	144
Pembina	SE/SE	6&1	163	53&52	183
Ramsey	NE	3	154	65	301
Ransom	NW	16	135	57	788
Stark	SE	11	141	96	301
Stark	SE	25	140	96	484
Stark	SE	25	140	96	725
Stark	SW	32	140	95	220
Stark	SW	32	140	95	228
Stark	SW	34	140	94	300
Stark	NE	14	140	95	464
Stark	NE	31	139	94	391
Stark	NW	15	138	97	306
Steele	NE	29	148	54	191
Steele	SW	5	148	56	297
Stutsman	NE	5	140	64	92
Stutsman	NW	4	140	65	242
Stutsman	NW	7	142	62	223
Towner	NE	18	163	65	109
Towner	SE	5	161	66	110
Towner	E	16	158	66	135
Walsh	NW	21	157	55	145
Walsh	SE	19	157	56	117
Walsh	NW	35	156	57	170
Ward	SW	2	153	83	668
Wells	NW	8	149	68	223
Wells	NW	13	147	69	303
Wells	NW	12	148	70	46
Wells	SW	8	149	72	222
Wells	NW	31	148	70	212
Wells	SW	26	146	72	328
2013 TOTAL					28,380

2012- Conservation Trees						
County	Quarter	Section	Township	Range	Trees Planted	
Adams	NE	20	130	91	562	
Adams	NE	8	130	91	233	
Billings	NE	3	141	100	263	
Burke	SE	21	160	94	181	
Burleigh	SE	22	142	75	1,007	
Burleigh	SW	33	139	75	276	
Burleigh		22, 27 & 28, 26	137	76 & 77	1,050	
Burleigh	NE	22	139	79	892	
Burleigh	NWNW	13	137	78	443	
Burleigh	NE	13	137	78	933	
Burleigh	SW	17	141	79	1,480	
Burleigh	SW	28	141	79	275	
Burleigh	NE	29	137	78	657	
Burleigh	SE	26	144	78	549	
Burleigh	NE	27	144	77	973	
Burleigh	SW	29	139	76	323	
Burleigh	NW	4	140	79	665	
Burleigh	SW	20	140	80	1,537	
Burleigh	SW	12	138	79	291	
Burleigh	NE	17	139	75	514	
Burleigh	NW & SW	18	141	77	347	
Burleigh	NW & SE	18	139	79	634	
Burleigh	NE	7	141	77	295	
Burleigh	SW	32	137	75	385	
Burleigh	NW	32	140	79	741	
Burleigh	SE	1	140	80	735	
Burleigh	NE & SE	24	137	79	700	
Divide	NE	23	163	99	737	
Divide	S	5	163	96	664	
Divide	SE	2	161	95	256	
Divide	NW	25	162	97	603	
Divide	SE	34	164	95	1,466	
Divide	NW	3	163	95	1,521	
Grant	NW&NE	24	135	90	437	
McKenzie	NW & SE	3 & 34	151 & 152	58	1,516	
McKenzie	SE/NE	6 & 31	150 & 151	98	3,194	
McLean	NW	34	143	80	265	
McLean	SE	17	146	84	1,575	
McLean	SE	24	143	80	265	
McLean	SW	19	144	81	403	
McLean	NE	21	148	81	634	
McLean	SE	10	144	82	87	
McLean	NE	4	143	81	149	

McLean	NW	10	145	79	48
McLean	SW	4	143	80	382
McLean	SE & SW	11	147	80	457
McLean	SE	3	147	79	654
Mercer	SW	26	145	86	152
Mercer	NE	26	146	86	390
Mercer	NW	7	144	86	284
Mercer	SE	3	145	85	171
Morton	SW	3	139	83	892
Morton	SE	4	139	81	200
Morton	SE	8	140	86	330
Morton	NE	19	140	81	397
Morton	NW	13	140	18	420
Oliver	SW/SE	14	142	84	524
Sioux	NW	3	130	80	355
Stark	SW	2	140	98	83
Ward	SE	7	160	88	196
Williams	SW	8	159	102	894
Williams	NW	15	156	101	213
2012 TOTAL					37,755