

Jack Dalrymple, Governor
 Mark A. Zimmerman, Director
 1600 East Century Avenue, Suite 3
 Bismarck, ND 58503-0649
 Phone 701-328-5357
 Fax 701-328-5363
 E-mail markrec@nd.gov
www.parkrec.nd.gov

FROM DIRECTOR - RECLAMATION

January 27, 2011

Public Service Commission
 State Capitol
 Bismarck, ND 58505-0480

Date: _____

Action: _____

RE: South Heart Coal, LLC Permit SHSH-1001

Info. Only: _____

Dear Sir or Madam:

Info & File: _____

The North Dakota Parks and Recreation Department (the Department) has reviewed the above referenced proposal from the South Heart Coal to conduct surface coal mining and reclamation operations in all or portions of Section 9,10,14-17, 20-23, 27-29, 33 and 34 , T139N, R98W, Stark County.

Our agency scope of authority and expertise covers recreation and biological resources (in particular rare plants and ecological communities). The project as defined does not affect state park lands that we manage but may affect a state Land and Water Conservation Fund (LWCF) project sites that we manage. The South Heart Acquisition (38-00819) LWCF site is near the project area. All LWCF sites received assistance from the federal LWCF program and are under protection of section 6(f) of the LWCF Act. Any property taken from within the 6f boundary of these sites must be replaced with property of equal market value. Should any public or private utilities need to be added or relocated on the LWCF recreational lands, the NDPRD must be consulted prior to any action taken. Please contact Jessica Riepl (701-328-5364 or jriepl@nd.gov) if additional LWCF information is needed.

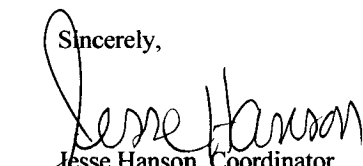
The North Dakota Natural Heritage biological conservation database has been reviewed to determine if any current or historical plant or animal species of concern or other significant ecological communities are known to occur within an approximate one-mile radius of the project area. Based on this review, several significant ecological community occurrences have been identified within or adjacent to the project areas. Please see the attached spreadsheet and maps for more specific information on these occurrences.

Because Natural Heritage database information is not based on a comprehensive inventory, there may be species of concern or otherwise significant ecological communities in the area that are not represented in the database. The lack of data for any project area cannot be construed to mean that no significant features are present. The absence of data may indicate that the project area has not been surveyed, rather than confirm that the area lacks natural heritage resources

The Department recommends that the project be accomplished with minimal impacts and that all efforts be made to ensure that critical habitats not be disturbed in the project area to help secure rare species conservation in North Dakota. Regarding any reclamation efforts, we recommend that any impacted areas be revegetated with species native to the project area.

We appreciate your commitment to rare plant, animal and ecological community conservation, management and inter-agency cooperation to date. For additional information please contact Kathy Duttonhefner (701-328-5370 or kgduttonhefner@nd.gov) of our staff. Thank you for the opportunity to comment on this proposed project.

Sincerely,


 Jesse Hanson, Coordinator
 Planning and Natural Resources Division

R.USNDNHI*2011-25
 KD1/25/11DL3.7.15

.....
Play in our backyard!

North Dakota Natural Heritage Inventory
Rare Animal and Plant Species and Significant Ecological Communities

State Scientific Name	State Common Name	State Rank	Global Rank	Federal Status	Township Range Section	County	Last Observation	Estimated Representation Accuracy	Precision
<i>Symphoricarpos occidentalis</i> shrubland	Buckbrush Shrubland	S4	GNR		139N098W - 27; 139N098W - 25; 139N098W - 23; 139N098W - 36; 138N098W - 03; 138N098W - 02; 139N098W - 35; 139N098W - 22; 139N098W - 34; 139N098W - 26; 139N098W - 28; 139N098W - 33	Stark	27947		M
<i>Fraxinus pennsylvanica - ulmus americana/symphoricarpos occidentalis</i> forest	Western Floodplain Forest	S3	GNR		139N098W - 27; 139N098W - 33; 139N098W - 28; 139N098W - 21; 139N098W - 34; 139N098W - 25; 139N098W - 22; 139N098W - 35; 139N098W - 24; 139N098W - 26; 139N098W - 36; 139N098W - 23	Stark	27947		M
<i>Fraxinus pennsylvanica - ulmus americana/symphoricarpos occidentalis</i> forest	Western Floodplain Forest	S3	GNR		139N098W - 14; 139N098W - 11; 139N098W - 22; 139N097W - 07; 139N098W - 15; 139N098W - 13; 139N097W - 18; 139N098W - 10; 139N098W - 12; 139N098W - 23; 139N098W - 24	Stark	28015		M
<i>Fraxinus pennsylvanica - ulmus americana/symphoricarpos occidentalis</i> forest	Western Floodplain Forest	S3	GNR		139N098W - 14; 139N098W - 13; 139N098W - 11; 139N098W - 22; 139N098W - 12; 139N098W - 15; 139N098W - 23; 139N098W - 24; 139N098W - 10	Stark	28015		M
<i>Artemisia cana/pascopyrum smithii</i> sparse shrubland	Silver Sage-western Wheatgrass Scrub	S2S3	GNR		139N098W - 27; 139N098W - 22; 139N098W - 26; 139N098W - 21; 138N098W - 03; 139N098W - 28; 139N098W - 33; 139N098W - 35; 139N098W - 34; 139N098W - 23	Stark	27947		M
<i>Fraxinus pennsylvanica - ulmus americana/symphoricarpos occidentalis</i> forest	Western Floodplain Forest	S3	GNR		139N098W - 22; 139N098W - 15; 139N098W - 28; 139N098W - 26; 139N098W - 16; 139N098W - 10; 139N098W - 09; 139N098W - 27; 139N098W - 14; 139N098W - 11; 139N098W - 21; 139N098W - 23	Stark	28016		M

North Dakota Natural Heritage Inventory
Rare Animal and Plant Species and Significant Ecological Communities

State Scientific Name	State Common Name	State Rank	Global Rank	Federal Status	Township Range Section	County	Last Observation	Estimated Representation Accuracy	Precision
<i>Fraxinus pennsylvanica - ulmus americana/symphoricarpos occidentalis forest</i>	Western Floodplain Forest	S3	GNR		139N098W - 27; 139N098W - 33; 139N098W - 28; 139N098W - 21; 139N098W - 34; 139N098W - 25; 139N098W - 22; 139N098W - 35; 139N098W - 24; 139N098W - 26; 139N098W - 36; 139N098W - 23	Stark	27946		M
<i>Fraxinus pennsylvanica - ulmus americana/symphoricarpos occidentalis forest</i>	Western Floodplain Forest	S3	GNR		139N098W - 23; 139N098W - 25; 139N098W - 27; 139N098W - 14; 139N098W - 13; 139N098W - 15; 139N098W - 24; 139N098W - 35; 139N098W - 34; 139N098W - 26; 139N098W - 22	Stark	28016		M

North Dakota Natural Heritage Inventory Biological and Conservation Data Disclaimer

The quantity and quality of data collected by the North Dakota Natural Heritage Inventory are dependent on the research and observations of many individuals and organizations. In most cases, this information is not the result of comprehensive or site-specific field surveys; many natural areas in North Dakota have never been thoroughly surveyed, and new species are still being discovered. For these reasons, the Natural Heritage Inventory cannot provide a definite statement on the presence, absence, or condition of biological elements in any part of North Dakota. Natural Heritage data summarize the existing information known at the time of the request. Our data are continually upgraded and information is continually being added to the database. This data should never be regarded as final statements on the elements or areas that are being considered, nor should they be substituted for on-site surveys.

Estimated Representation Accuracy

Value that indicates the approximate percentage of the Element Occurrence Representation (EO Rep) that was observed to be occupied by the species or community (versus buffer area added for locational uncertainty). Use of estimated representation accuracy provides a common index for the consistent comparison of EO reps, thus helping to ensure that aggregated data are correctly analyzed and interpreted.

Very high (>95%)

High (>80%, <= 95%)

Medium (>20%, <= 80%)

Low (>0%, <= 20%)

Unknown

(null) - Not assessed

Precision

A single-letter code for the precision used to map the Element Occurrence (EO) on a U.S. Geological Survey (USGS) 7.5' (or 15') topographic quadrangle map, based on the previous Heritage methodology in which EOs were located on paper maps using dots.

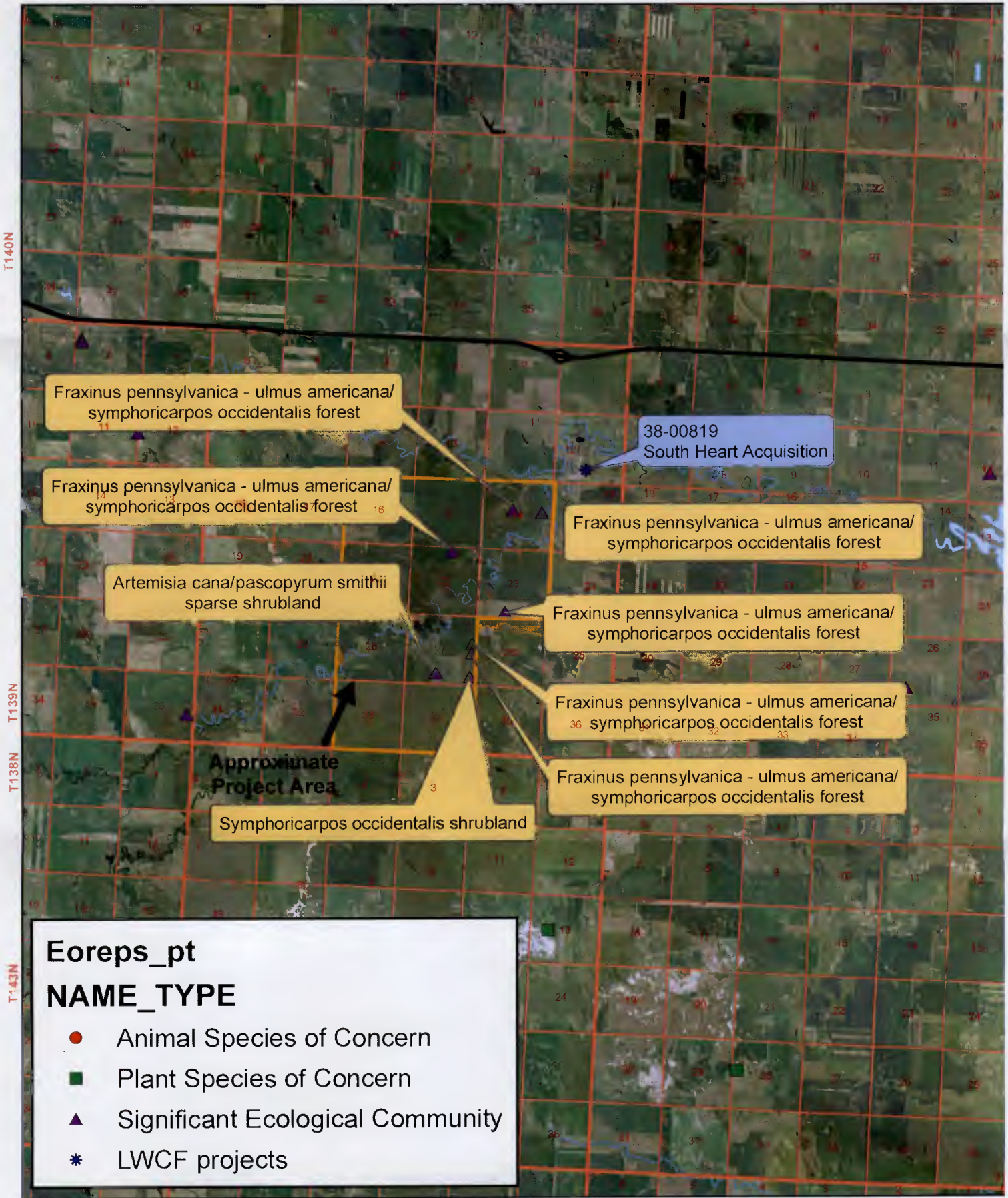
S - Seconds: accuracy of locality mappable within a three-second radius; 100 meters from the centerpoint

M - Minute: accuracy of locality mappable within a one-minute radius; 2 km from the centerpoint

G - General: accuracy of locality mappable to map or place name precision only; 8 km from centerpoint

U - Unmappable

North Dakota Parks and Recreation Department
 North Dakota Natural Heritage Inventory



R98W R97W