

Solicitation # PU-10-123
Consulting Services for Post-Construction
Siting Inspections

May 26, 2010



**North Dakota Public
Service Commission**
Public Utilities Division

Prepared by

ProSource
TECHNOLOGIES, INC.

ProSource Technologies, Inc.
9219 East River Road NW
Minneapolis, MN 55433
763.786.1445 – fax 763.786.1030
www.prosourcetech.com

May 25, 2010

9219 East River Road NW
Minneapolis, Minnesota 55433
763-786-1445
Fax 763-786-1030
www.prosourcetech.com

North Dakota Public Service Commission
Public Utilities Division
600 East Boulevard Ave, Department 408
Bismarck, North Dakota 58505-0480

Re: RFP Number **PU-10-123**
Consulting Services for Post Construction Siting Inspections

Dear Selection Committee:

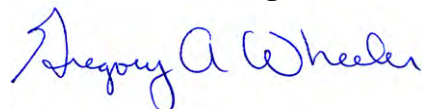
Enclosed you will find one original, seven copies and one electronic copy on a CD of our response to RFP Number PU-10-123.

ProSource Technologies, Inc. (ProSource) is pleased to submit our qualifications for this project, which highlights the following items:

- Various staff members are from and others are now working in North Dakota.
- Commitment of ProSource's leadership team to establish an office in North Dakota upon award of this project.
- A multi-disciplinary staff having experience with over 100 different clients establishing ProSource as the largest right of way/site acquisition firm in the Midwest.
- Staff that brings to the table experiences and best practices from major utility companies throughout the Midwest.
- An experienced project manager, providing a single point of contact for the North Dakota Public Service Commission staff.
- Additional staff members including environmental, legal and drafting professionals that will be available to assist with tasks that may require specific expertise in these areas.
- The financial strength and insurance coverage to protect the North Dakota Public Service Commission. A sample certificate of insurance has been included at the end of our proposal (see Appendix C).

We would welcome the opportunity to talk with PSC staff to generally discuss the projects and fine-tune an agreement.

Sincerely,
ProSource Technologies, Inc.



Gregory A. Wheeler, J.D.
President

cc: Curt Proud

PROPOSAL FOR:

North Dakota Public Service Commission
Public Utilities Division
Consulting Services for Post-Construction Siting Inspections
Solicitation # PU-10-123

Table of Contents

	Page
6.02 Introduction _____	2
6.03 Understanding of the Project _____	2
This Post Construction Inspection Would Typically Include _____	2
Providing PSC Staff Agrees, the Scope of Inspections Could Also Include _____	3
Project Schedule _____	4
Pertinent Issues and Potential Problems _____	4
6.04 Methodology Used for the Project _____	4
Management Plan for the Project _____	5
6.05 Experience and Qualifications _____	6
Project Experience _____	6
Project Team _____	15
6.06 Cost Proposal _____	16
6.07 Required Documents	
Appendix A _____ Resumes	
Appendix B _____ Letters of Recommendation	
Appendix C _____ Sample Certificate of Insurance	
7.03 Conflicts of Interest Statement _____	17

PROPOSAL FOR:

North Dakota Public Service Commission
Public Utilities Division
Consulting Services for Post-Construction Siting Inspections
Solicitation # PU-10-123

6.02 Introduction

ProSource Technologies, Inc. is pleased to submit this response to RFP Number PU-10-123, Consulting Services for Post Construction Siting Inspections. Per requirements noted in the RFP, Gregory A. Wheeler, President of ProSource Technologies, Inc. has signed the proposal. ProSource is a Minnesota corporation authorized to conduct business in the state of North Dakota.

The contact for this proposal is:

Curtis M. Proud
ProSource Technologies, Inc.
9219 East River Road NW
Coon Rapids, Minnesota 55433
Ph: 763-786-1445 or 1-888-422-4449
E-mail: cproud@prosourcectech.com.

ProSource certifies that it will comply will all provisions of the RFP and the laws and regulations of the state of North Dakota.

6.03 Understanding of the Project

Post construction inspections are the last step in the process that enables corporations to construct and operate energy and transmission facilities. Authority to construct and operate energy conversion and transmission facilities (Facilities) in North Dakota is managed by the Public Service Commission (PSC) and requires a letter of intent, application, public hearings in the involved Counties, Certificate of Site Compatibility and Permit for the route or site. The PSC may conduct interim inspections during the construction of the Facilities. Solicitation PU-10-123 provides for Post Construction Siting Inspections (Inspections) of the completed Facilities.

THIS POST CONSTRUCTION INSPECTION WOULD TYPICALLY INCLUDE:

- Confirming that the owner of the Facilities has submitted to the PSC the required post construction reports, and documents, including such items as:
 - As-built drawings.
 - Tree and shrub mitigation specifications and the required inventories, replacement plans, and annual inspection reports.
 - Construction Mitigation and Reclamation Plan.
 - Environmental inspection reports.
- Follow up on suspected non-compliance conditions detected in the oversight spot inspections performed by the PSC during the construction of the Facilities.
- Spot-check of as-built drawings.
- Site Inspection of the Facilities.

PROPOSAL FOR:

North Dakota Public Service Commission
Public Utilities Division
Consulting Services for Post-Construction Siting Inspections
Solicitation # PU-10-123

- Compliance with construction and restoration specifications, including items such as:
 - Confirm the maximum area of cleared trees does not exceed the maximum widths specified for shelterbelts or wooded areas in excess of 50-feet in length.
 - Spot check the depth of cover of pipelines to confirm the required minimum depth of cover was achieved.
 - Confirm the maximum width of permanent easements and temporary workspaces do not exceed the specified maximums.
 - Separation and replacement of subsoil and top soil.
 - Rock disposal.
 - Fence repair.
 - Road and driveway restoration.

PROVIDING PSC STAFF AGREES, THE SCOPE OF INSPECTIONS COULD ALSO INCLUDE:

- Follow up on the concerns and questions from the public or governmental entities that commented at public hearings or submitted letters to the PSC.
- Confirm the Facilities and the activities of the owner are in compliance with relevant State and Federal laws and regulations, including items such as:
 - ND Century Code Chapter 47.05.02.1, Easement descriptions.
 - ND Century Code Chapter 49.22.16.1, Unfair tactics in acquiring easements.
 - ND Century Code Chapter 49.22.05.1, Exclusion and avoidance areas.
 - ND Century Code Chapter 49.17, Improvement of sites.
 - 49 CFR Part 195 et seq., Transportation of Hazardous Liquids by Pipeline.
 - 49 CFR Part 192 et seq., Transportation of Natural Gas by Pipeline.
- Pipeline markers frequency and location as required by Federal regulations.
- Other observations that may be of interest to other governmental entities, landowners, conservation or preservation groups, landowners, tenants or the media.
- Low-level commercial quality aerial video of the condition of the right of way and other work areas as a method to document the condition of the land following construction. ProSource would accomplish this work by subcontracting with Eagle Sky Patrol (ESP) of Nemo, South Dakota. This firm has considerable experience providing inspection services to pipeline companies.
- Environmental and other permit compliance.

PROPOSAL FOR:

North Dakota Public Service Commission
Public Utilities Division
Consulting Services for Post-Construction Siting Inspections
Solicitation # PU-10-123

PROJECT SCHEDULE:

The project schedule will be determined at the time the PSC and ProSource develop the joint memorandum confirming the scope of Inspection and deliverables. ProSource will staff the project to the level required to meet the project schedule desired by the PSC. Because we do not currently have the “State-Furnished Property/Services” applicable to the identified Facilities, it is difficult to speculate on the time required to complete work on one or more of the designated Facilities. Unless there is a need to commence work immediately, we commit to commencing work with one or more inspectors within 14 days of contract approval and our notice to proceed.

PERTINENT ISSUES AND POTENTIAL PROBLEMS:

The Facilities owner may not have provided the PSC with quality, full-sized physical or electronic copies of as-built drawings, surveys and reports.

A Facilities owner may resist granting ProSource staff access to the Facilities that are then in operation. It is possible that ProSource will require advance assistance from the PSC to gain entry to fee land or easements to avoid delays.

6.04 Methodology Used for the Project

1. ProSource will meet with PSC staff to identify and obtain the “State-Furnished Property/Services.” We presume this would include:
 - a. Application, Certificate of Site Compatibility, Finding of Facts and Conclusions of Law, the Routing or Siting Permit, and subsequent correspondence to and from the PSC and owner of the Facilities.
 - b. As-built drawings and the required reports from the owner of the Facilities.
 - c. Contact data for the owner of the Facilities so that we could obtain missing reports or drawings and request additional information.
 - d. At the option of the PSC, this data could also include comments and questions from the public or governmental entities that commented at public hearings or submitted letters to the PSC.
2. Generally discuss with the PSC its expectation for the Inspection of the subject Facilities.
3. Discuss with the PSC the authority of ProSource for the physical Inspection of the Facilities. This would include:
 - a. Contact data for the owner or manager of the Facilities so that we can arrange for entry onto the easement or fee land that contain the Facilities.

PROPOSAL FOR:

North Dakota Public Service Commission
Public Utilities Division
Consulting Services for Post-Construction Siting Inspections
Solicitation # PU-10-123

- b. Inspection of Facilities located on easements.
 - i. Confirm the method used to apprise owners and tenants of land subject to Facilities easements of the Inspection by ProSource.
 - ii. In the alternative, only make Inspection of Facilities located on easements following a verbal license from the owner or tenant.
4. Review relevant documents and drawings to determine the proposed mandatory and optional items for Inspection. ProSource will provide a draft memorandum for the approval of the PSC, which details the proposed schedule, scope of Inspection and deliverables to be in the ProSource Inspection report.
5. ProSource and the PSC staff discuss the universe of items subject to Inspection. Considering the budget for Inspection of the subject Facilities, priorities and a scope of work and deliverables would be mutually agreed upon and confirmed in a joint memorandum.
6. Missing documents, reports and as-built drawings would be requested from the owner of the Facilities. Upon receipt:
 - a. Materials would be reviewed by ProSource.
 - b. Copies would be submitted to the PSC for its file.
7. Qualified field inspectors and/or the project manager would inspect the selected Facilities.
8. As needed or requested, periodic conferences or status updates would be made with PSC staff.
9. Upon substantial completion of each Facilities Inspection, a status meeting or conference call would take place with PSC and ProSource staffs to discuss the preliminary report findings and deliverables.
10. Issuance of the Facilities Inspection report to the PSC.

MANAGEMENT PLAN FOR THE PROJECT:

1. Each Facilities Inspection assignment will be assigned to a project manager and this direct supervision will be augmented by overview and consultations by General Counsel. Curt Proud, Dave Hennen, Scott Stenger and Greg Wheeler have considerable experience with the construction and operation of Facilities and related regulatory and environmental matters. Curt Proud will be the lead project manager. As noted on the attached resumes, these persons have between 10 and 30 years of applicable experience.
2. The project manager will be the primary contact person with PSC staff.

PROPOSAL FOR:

North Dakota Public Service Commission
Public Utilities Division
Consulting Services for Post-Construction Siting Inspections
Solicitation # PU-10-123

3. The project manager will supervise and direct the field inspectors for the performance of the agreed scope of work and will perform the quality control of all reports. If needed, the project manager will provide on site assistance to the field inspectors.
4. Field site inspectors will be selected who have experience with the type of Facility that is the subject of the Inspection. (Our staff includes persons who have hands-on experience with the design, construction, operation and management of liquid and gas pipelines; pump and compressor stations; and electrical distribution systems.)
5. Depending upon the circumstances and needs of each Facilities Inspection, staff environmental professionals may also participate in the site Inspection or audit the reports submitted by the Facilities owner. (Our staff includes individuals familiar with the agricultural practices, anticipated environmental risks, regulations, mitigation methods, remediation practices and required documentation.)
6. Reports will be prepared by the inspectors in a form and format approved by the PSC in Word or Excel. All data will be tracked for each Inspection in an Access database designed for this project.
7. Quality control/quality assurance will be handled by the project manager. The project manager will supervise the inspector(s) and review and sign the site Inspection reports.

6.05 Experience and Qualifications

ProSource Technologies, Inc. (ProSource) is a professional consulting firm, established in 1998, specializing in right of way/site acquisition, appraisal, environmental, construction inspection, regulatory and surveying services. We offer comprehensive turnkey services for government, commercial and industrial clients that enable the construction of and solutions for power lines, pipelines, wireless telecommunications, fiber optics, roads, railroads, airports, trails, wind farms, and commercial, residential, and industrial site developments.

ProSource employs over 50 persons who are located in offices in Minneapolis and Grand Rapids, Minnesota and Cedar Rapids, Iowa. We previously established other field offices in Minnesota, North Dakota and Illinois for extensive project work in those areas. Based upon the preferences of the PSC and the needs of the involved staff of ProSource, we will establish an office in North Dakota.

Professional staff includes:

Project managers, engineers and inspectors who have direct hands-on experience with:

- The design, construction, management, operations, maintenance and regulatory compliance of crude oil, refined product and natural gas pipelines, pump and compressor stations, and related appurtenances.

PROPOSAL FOR:

North Dakota Public Service Commission
Public Utilities Division
Consulting Services for Post-Construction Siting Inspections
Solicitation # PU-10-123

- Construction related environmental regulations; permitting and required inspections; reporting and mitigation measures; environmental investigations and site assessment, emergency response and remediation systems.
- Familiarity with electrical generation and distribution systems.
- The acquisition of easements and fee land for Facilities.
- Application and compliance reporting for Federal and State routing permits and environmental permits.

The ProSource professional staff includes attorneys, engineers, project managers, abstractors and title examiners, appraisers, environmental specialists, environmental and construction inspectors, real estate brokers and sales persons, CAD draftsmen, and database specialists.

ProSource's typical clients include liquid and natural gas pipeline companies, electric transmission and distribution companies, municipalities, highway departments, states and counties, municipal sewer interceptor departments, and law firms.

The typical services ProSource provides to our clients include: Feasibility studies and cost estimates; route and site selection; State and Federal routing permits, State and Federal environmental permitting; supervision of survey, geotechnical, and forestry work; wetland delineation; field investigations for environmental, cultural resources and threatened and endangered species; title abstracting and examination; appraisals; drafting of legal descriptions; development of drawing and maps; acquisition of easements and fee land; condemnation support; construction liaison with landowners; construction and environmental inspections; clean up and restoration inspection; settlement of construction damages; State and Federal regulatory permitting and reporting.

PROJECT EXPERIENCE

ProSource has fully managed or handled the route selection; regulatory and environmental permitting; land title examination; appraisal; right of way acquisition; environmental inspection; and damage settlements for many pipeline, pump station, electric transmission line, electric substation, roadway, trail and large diameter sewer interceptor projects.

Many of the proposed project managers, inspectors and General Counsel have previously held supervisory positions with pipeline and utility companies and have direct experience with the design, construction and operation of pump and compressor stations and pipelines.

The following projects are representative of our experience and background relevant to this contract.

PROPOSAL FOR:

North Dakota Public Service Commission
Public Utilities Division
Consulting Services for Post-Construction Siting Inspections
Solicitation # PU-10-123



Enbridge Southern Lights Pipeline, LSr & Alberta Clipper Pipelines - North Dakota, Minnesota, Wisconsin

- Pipeline construction of parallel 20” and 36” pipelines traversing 323 miles
- Title research conducted on 2,500 parcels in 13 counties
- Review of legal descriptions/landowner property sketches
- Legal document and file preparation
- Comparable sales analysis/appraisals
- Easement and work space acquisitions
- Database creation and maintenance
- City and county permits/road and trail crossings
- Video of access roads and road crossings
- Surveying and drafting

Enbridge Pipelines LLC - North Dakota

- Fee purchases of land for five crude oil pump stations in urban and rural areas of Minnesota and North Dakota
- Collaboration with Project Engineers regarding site selection
- Negotiation of purchase terms and price
- Resolution of road access issues with the state department of transportation
- Develop and implement a purchase and closing work plan to deal with owners who were imprisoned out of state
- QA/QC of ALTA/ ACSM surveys
- Conditional use permits
- Collaboration with Project Engineers to resolve possible noise issues with adjoining landowners and utilities

Enbridge Pipelines LLC - North Dakota

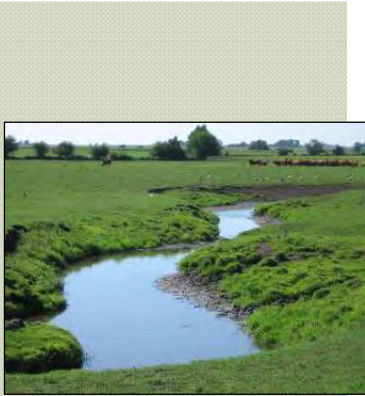
- Trenton to Beaverlodge: Right of way acquisition, title work and damage settlement services to support new pipeline construction from Trenton to Beaverlodge
- Hydrostatic Test of Pipeline: Right of way and claim support services, Beaverlodge to Berthold; Minot to Pleasant Lake; Bartlett to West Grand Forks
- Enbridge Maintenance Dig Projects: Temporary workspace acquisition and claim services to support pipeline maintenance work, Minot, North Dakota to Clearbrook, Minnesota

Montana Dakota Utilities, Plymouth Energy Pipeline - Merrill, Iowa

- 6-mile natural gas pipeline (Plymouth County)
- Connects the Plymouth Energy Ethanol Plant with the Northern Natural gas transmission line
- Iowa Utilities Board permitting
- Right-of-way acquisition
- Landowner notifications
- Coordination of multiple public meetings
- Database creation and maintenance
- Legal document preparation
- Environmental permitting

PROPOSAL FOR:

North Dakota Public Service Commission
Public Utilities Division
Consulting Services for Post-Construction Siting Inspections
Solicitation # PU-10-123



Montana Dakota Utilities, Horizon Pipeline - Jewell, Iowa

- 11-mile natural gas pipeline (Hamilton and Story counties)
- Connects the Horizon Ethanol Plant near Jewell, Iowa to the Northern Natural Gas transmission line
- Iowa Utilities Board routing permit
- Right of way acquisition
- Title work
- Landowner notifications
- Coordination of multiple public meetings
- Database creation and maintenance
- Legal document preparation
- Survey coordination
- Environmental permitting (stream and wetland crossings, NPDES, threatened and endangered species, flood plain)



Montana Dakota Utilities - Corning, Iowa

- 14-mile natural gas pipeline (Adams County)
- Connects the Pinnacle Ethanol Plant (and City of Corning) to the Kinder Morgan natural gas transmission line
- Route feasibility study
- Iowa Utility Board routing permit
- Right of way acquisition
- Coordination of multiple public meetings
- Landowner notifications
- Easement drawings
- Database creation and maintenance
- Legal document preparation
- Environmental permitting (stream and wetland crossings, NPDES, threatened and endangered species)



Montana Dakota Utilities, Platinum Ethanol Pipeline - Cherokee, Iowa

- 22-mile natural gas pipeline (Cherokee and Ida counties)
- A segment of the pipeline will connect the Platinum Ethanol Plant with Northern Natural gas
- Iowa Utilities Board permitting
- Environmental permitting
- Title work
- Right of way acquisition
- Landowner notifications
- Coordination of multiple public meetings
- Database creation and maintenance
- Legal document preparation
- Environmental permitting (stream and wetland crossings, NPDES, threatened and endangered species)

PROPOSAL FOR:

North Dakota Public Service Commission
Public Utilities Division
Consulting Services for Post-Construction Siting Inspections
Solicitation # PU-10-123



CenterPoint Energy - Minnesota

- 17-mile high pressure natural gas line through Minneapolis metropolitan area
- Feasibility study
- Route planning
- Regulatory permitting (PUC routing permit)
- Environmental permitting
- Environmental surveys (wetlands, biological, cultural)
- Right of way acquisition
- Title work
- Appraisals
- Condemnation support
- Survey and engineering (subcontractors)



City of Duluth, Six-Mile Natural Gas Pipeline - Duluth, Minnesota

- Six-mile high pressure natural gas pipeline
- Route planning
- Title research
- Right of way acquisition
- FERC Section 7(c) application
- EQB routing permit (converted to Section 7(c) due to law change)
- Environmental permitting
- Surveying
- Comparable sales analyses
- State and federal regulatory permitting
- Landowner database
- Environmental inspection
- Construction support

Metropolitan Council, Rosemount Interceptor - Rosemount, Minnesota

- Negotiation of easements
- Preparation of MCES acquisition forms and documents
- Written correspondence with landowners
- Review and analysis of engineering drawings, parcel survey plats and legal descriptions
- Review and analysis of appraisal reports
- Landowners meetings to conduct site inspections and answer questions, and negotiate price and term for necessary easements rights
- Route design and easement term recommendations to MCES
- Maintaining landowner contact information

Metropolitan Council Environmental Services, Northeast Interceptor - Minnesota

- Route feasibility studies for a 14-mile long, large diameter interceptor located in a fully developed urban area
- Detailed analysis of real estate rights of a railroad corridor

PROPOSAL FOR:

North Dakota Public Service Commission
Public Utilities Division
Consulting Services for Post-Construction Siting Inspections
Solicitation # PU-10-123

**Metropolitan Council Environmental Services, Victoria Area Study -
Victoria, Minnesota**

- Conducted a routing and feasibility study for proposed sanitary sewer pipelines
- Field reconnaissance regarding identification of preferred and alternate routes
- Title and environmental permit research
- Determination of land values in study area
- Projection of land acquisition costs for each proposed route

**Power-Up Wisconsin, Minnesota Power/Wisconsin Public Service
Corporation - Minnesota and Wisconsin**

- 250-mile transmission line
- Thorough 40-year chain of title abstracting
- Creation of title opinion/title certification documents
- In an existing power line corridor, identified several additional landowners, title gaps, easement gaps, and new parcels.
- Identified more than 10,000 landowners along various alternative routes in four counties, including plotting routes on county tax maps, identifying affected parcels, and compiling a database utilizing county tax rolls
- Database management to develop graphic representations of routes and landowners including all roads, streams, parcels and pipelines in the project area

**Minnesota Power, Power Up Wisconsin - St. Louis County, Minnesota; and
Douglas, Sawyer and Washburn Counties, Wisconsin**

- 250-mile, 345 kV electrical transmission line
- Identified more than 10,000 landowners along alternate routes in four counties
- Plotted routes on county tax maps
- Title and railroad acquisition/permitting
- Assembly of landowner lists for PUC and PSC filings
- Identified affected parcels within 1,000 feet of either side of each potential route, and compiled a landowner mailing list utilizing county tax data
- Conducted database management using ArcView to develop a graphic representation of routes and landowners including all roads, streams, parcels and pipelines
- Title and right of way acquisition/permitting work for more than 150 parcels along the Minnesota portion of project
- Construction support including soil and ground water sampling at several locations
- Consulted with the Minnesota Pollution Control Agency regarding contaminated sites crossed by the project



PROPOSAL FOR:

North Dakota Public Service Commission
Public Utilities Division
Consulting Services for Post-Construction Siting Inspections
Solicitation # PU-10-123



Great River Energy, Bardon to Stinson Power Line - Douglas County, Wisconsin

- Six miles, 69 kV electrical transmission line
- Environmental permitting
- Section 10 river crossing
- Identified ownership data and prepared a mailing list
- Title research
- Railroad permitting
- Comparable sales analysis
- Right of way acquisition
- Negotiated a utility crossing license/easement for state lands
- Construction support

Great River Energy, County Road A-M Line - Douglas County, Wisconsin

- Power line relocation
- Title research
- Identified ownership data and prepared a mailing list
- Easement verification
- Landowner notification
- Acquisition services of additional rights
- Construction support

Great River Energy, West Metro Transmission Line - Maple Grove, Minnesota

- New construction & relocation for 115 kV power line
- Title research
- Identified ownership data and prepared a mailing list
- Comparable sales analysis
- Acquisition services
- Document/file preparation

Great River Energy, Lexington Avenue Power Line - Anoka County, Minnesota

- 3.5 miles, 115 kV
- Identified ownership data and prepared a mailing list
- Title research
- Comparable sales analysis
- Acquisition services
- Construction support

Great River Energy, Power Line - Helena, Minnesota

- Power line extension
- Title research
- Identified ownership data and prepared a mailing list
- Comparable sales analysis
- Acquisition services
- Document/file preparation



PROPOSAL FOR:

North Dakota Public Service Commission
Public Utilities Division
Consulting Services for Post-Construction Siting Inspections
Solicitation # PU-10-123

ProSource staff has assisted Great River Energy on over 40 power line projects in Minnesota and Wisconsin over the last several years.



ProSource has assisted Lake Country Power on over 20 power line and substation projects in Minnesota.

Great River Energy, 700 MHz Communications Systems and Fiber Connections, Multiple Sites - Minnesota

- System Control and Data Acquisition (SCADA)
- PC Wireless Internet Access
- Acquire co-op approval for over 600 Customer Premise Equipment (CPE) sites, involving over 40 co-ops/site owners
- Zoning and related city/county permits at each location for CPE and Base Transmitter Station (BTS) sites, over 250 sites
- *Pelican Lake*: New lease agreement, access to an existing building and access to existing back-up electrical power BTS site
- *Montgomery*: New lease, access to an existing building and access to back-up electrical power BTS site
- *Graceville*: New lease agreement, access to an existing building and access to existing back-up electrical power BTS site
- *Minnetrista*: New lease, access to an existing building and access to back-up electrical power BTS site

Great River Energy, CapX 2020, Landowner Notification, Three Proposed Transmission Lines - Minnesota, South Dakota, North Dakota and Wisconsin

- Identified affected properties within three notification corridors
- Encompassed approximately 580 miles across 35 counties
- Obtained county taxpayer/property owner data
- Transferred and maintained data into an Access database to develop mailing list that included 74,000 addresses
- Prepared mailing to local governments (counties, townships and cities)
- Prepared files to efficiently assist client to respond and monitor calls from property owners
- Following the Minnesota notification process, compiled property owner data for the affected counties in South Dakota, North Dakota and Wisconsin (2,700 property owners)

NSP/Xcel Energy, Loon Lake Transmission Line - Rice County, Minnesota

- New construction and reconstruction, 14 miles, 115 kV
- Title research
- Landowner list
- Comparable sales report
- Offer sheets

Lake Country Power, Several Projects - Northern, Minnesota

- Substation site selections
- Negotiation of purchase agreements for substations and warehouse sites
- Drafting of acquisition documents
- Rezoning of substation sites
- Acquisition of easements for several power lines

PROPOSAL FOR:

North Dakota Public Service Commission
Public Utilities Division
Consulting Services for Post-Construction Siting Inspections
Solicitation # PU-10-123



Minnkota Power, Lisbon Station and Keystone Pipeline - Ransom County, North Dakota

- Limited botany survey for 15 miles of proposed transmission line (100-foot survey corridor)
- Conducted a pedestrian survey of the proposed project area to determine the presence or absence of the western prairie fringed orchid (a federally threatened prairie wildflower)
- Systematic search, in which two parallel transects were used as a guide to provide the greatest coverage of the area
- Communication with the U.S. Fish and Wildlife Service (North Dakota) and the U.S. Forest Service's Sheyenne National Grassland
- Final reporting

Southern Minnesota Municipal Power Agency - Redwood Falls, Minnesota

- 5 miles, 115 kV transmission line & substation configuration
- Routing
- Title research
- Easement acquisitions
- Appraisals
- Permitting

Southern Minnesota Municipal Power Agency - St. Peter, Minnesota

- 3 miles, 69 kV transmission line
- Routing
- Title research
- Easement acquisitions
- Appraisals
- Permitting

Wind Farm - Steele County, Minnesota

- 33-tower wind farm, access roads, gathering lines, substation and transmission line
- Work completed to date: Substation siting
- Work yet to be completed:
 - Updating landowner list
 - Public meetings
 - Zoning and permitting investigation
 - Initial site candidate landowner contacts
 - Title research
 - Database maintenance and file preparation
 - Primary acquisition phase



PROPOSAL FOR:

North Dakota Public Service Commission
Public Utilities Division
Consulting Services for Post-Construction Siting Inspections
Solicitation # PU-10-123

PROJECT TEAM

Depending upon the schedule requested by the PSC, one or more project managers will lead a team of one or more inspectors to complete the scope of work and schedule agreed to in the joint PSC and ProSource memorandum.

Personnel Roster – (see attached resumes in Appendix A)

<u>Individual</u>	<u>Role</u>	<u>Hours Estimated *</u>
Curt Proud	Project Manager / possible Inspector	
Greg Wheeler	Principal-in-Charge	
Dave Hennen	Project Manager / possible Inspector	
Scott Stenger	Project Manager / possible Inspector	
Chuck Danchertsen	Inspector / possible Project Manager	
Bill Kallberg	Inspector / possible Project Manager	
Jerry Lemons	Inspector / possible Project Manager	
Tony Downie	Inspector / possible Project Manager	
Richard Wittkamp	Inspector / possible Project Manager	
Steve Sweney	Inspector	
John Finstad	Inspector	
Tom Nickel	Inspector	
Linda Douglas	Inspector	
Tom Nash	Inspector / possible Project Manager	

* Because we do not currently have the anticipated items included in the “State-Furnished Property/Services” applicable to each of the Facilities, it is difficult to speculate on the estimated hours required to complete work on one or more of the designated Facilities. It is our initial impression that the scope of possible work could exceed the budget cap for most of the projects; however, we will limit our work and costs to conform to the budgeted amount. Savings and/or a more detailed scope of work will be possible by the effective scheduling of the assigned work.

PROPOSAL FOR:

North Dakota Public Service Commission
Public Utilities Division
Consulting Services for Post-Construction Siting Inspections
Solicitation # PU-10-123

6.07 Cost Proposal

Based upon the joint memorandum that specifies the agreed scope of work and time schedule, ProSource agrees to conduct the Facilities Inspections for the amounts budgeted and listed in Attachment 6 of RFP PU-10-123. Costs will be accrued and tabulated based upon the below schedule and terms, with the understanding the total cost for any one of the Facilities shall not exceed the amount listed on Attachment 6. Additionally, this proposal presumes that ProSource will submit a monthly invoice that details its fees earned and expenses incurred and that the PSC shall make timely monthly payment of such invoices.

Direct Costs: Direct costs, if any, as may be incurred and approved by the Commission at actual cost, plus 5%.

Labor	Hourly Rates
Inspector	\$85.00
Project Manager	\$95.00
CAD Draftsman	\$80.00
Administrative and Database Support	\$60.00
Project Principal / General Counsel	\$150.00

Indirect Costs	Rates
Cell phone	No Charge
Laptop and printer	No Charge
Digital camera	No Charge
Per diem*	\$75.00
Electronic Pipeline Locator	No Charge
Incoming toll free telephone	No Charge

Supplies and materialsActual costs, plus 5%.

Overhead:Not applicable as overhead and profit is included in the above hourly rates.

Vehicle Mileage Rate*:The IRS rate (currently \$0.50), plus 5%.

..... * If higher the amounts approved for employees of the State of North Dakota.

LIST ANY APPLICABLE PROMPT PAYMENT DISCOUNT TERMS

Not applicable

PROPOSAL FOR:

North Dakota Public Service Commission
Public Utilities Division
Consulting Services for Post-Construction Siting Inspections
Solicitation # PU-10-123

Appendix A – Resumes



Curtis M. Proud

Senior Project Manager / Possible Inspector

Mr. Proud has over 34 years of experience managing and handling real estate, claim, regulatory, zoning, insurance and landowner relations issues associated with pipelines and similar industrial operations. He has considerable experience in communicating and negotiating with landowners, governmental entities and legal counsel.

His specific right of way/real estate skills include project management, supervision of right of way agents; route selection; land title; interpretation of survey data and audit of legal descriptions; drafting and negotiating easements and other land use agreements; encroachment abatement; negotiation of co-occupancy agreements with utilities, railroad and governmental entities; and regulatory permits.

Representative Experience

- City of Duluth, Natural Gas Pipeline (six miles) – Duluth, MN
- City of Fridley, 85th Avenue Trail – Fridley, MN
- Enbridge Energy, Alberta Clipper Pipeline (323 miles) – ND, MN and WI
- Enbridge Energy, Trenton to Beaver Lodge (52-mile pipeline and five pump stations) – ND
- Enbridge Energy, Southern Lights Pipeline (188 miles) – ND, MN and WI
- Enterprise Product Partners, Cost Estimate and Feasibility Study – St. Paul Park to Mankato, MN
- Great River Energy, West Metro Transmission Line Upgrades (12-mile, 230 kV) – Minneapolis, MN
- Lake Country Power – Cohasset, MN
- Magellan Pipeline, Various Projects
- Metropolitan Council, Construction Workspace – Woodbury, MN
- Metropolitan Council, Northeast Interceptor Phase I (five miles) – Maplewood to St. Paul, MN
- Metropolitan Council, Rosemount Interceptor – Rosemount, MN
- Metropolitan Council, Victoria Interceptor (22 miles) – Victoria, MN
- Minnesota Department of Transportation (Mn/DOT), TH 52 Highway Reconstruction – Preston to Fountain, MN

Experience With Other Firms

- Manager of Land Records and Claims, Assistant Secretary and Attorney in Fact for Williams Pipe Line Company (1984-2003). Management of staff and real estate matters for 12,000 miles of pipelines, 115 pump stations, 46 terminals in 12 Midwestern states.

AWARDS

Minnesota Office of Pipeline Safety, Award for managing right-of-way issues, 2001
The Nature Conservancy-Oklahoma Chapter, Volunteer of the Year Award, 1993

SPECIALTY

Project Management
Route/Site Selection
Negotiations
Acquisitions
Problem Resolution
Research and Investigation

EDUCATION

B.S., Business Administration and Political Science,
Northeastern State University -
Tahlequah, Oklahoma

LICENSES/REGISTRATIONS

Licensed Real Estate
Salesperson - *Minnesota*

Notary Public - *Minnesota*

MEMBERSHIPS

International Right of Way
Association (IRWA)

PROFESSIONAL DEVELOPMENT

Participation in course
development and teaching
Mn/DOT sponsored professional
development classes related to
negotiations and safety

Numerous Mn/DOT sponsored
professional development
courses

Participation in course
development and teaching of
excavation safety

PROPOSAL FOR:

North Dakota Public Service Commission
Public Utilities Division
Consulting Services for Post-Construction Siting Inspections
Solicitation # PU-10-123

Appendix A – Resumes

David E. Hennen

Project Manager / Possible Inspector

Mr. Hennen has over 14 years of experience in environmental consulting. Mr. Hennen specializes in the management of projects associated with Phase I environmental site assessments, regulated waste inspections, pre-demolition surveys, demolition activities and acquiring regulatory and environmental permits. He works closely with clients and agencies to ensure regulatory compliance while meeting project expectations. He has successfully obtained federal, state and local permits and approvals for routing, stream and wetland crossings, erosion and sediment control, storm water runoff, water appropriation and discharge, threatened and endangered species, and cultural resources. Mr. Hennen has also managed Phase I environmental site assessments, pre-demolition surveys, abatement projects and demolition activities for many residential properties in Minnesota.

Representative Experience

- Minnkota Power, Lisbon Station and Keystone Pipeline – ND
- Acme Brick Company – Springfield, MN
- CenterPoint Energy, Riverside Pipeline (17 miles) – Minneapolis, MN
- City of Duluth, Great Lakes Interconnect Pipeline (10-inch diameter, 5.3 miles) – St. Louis County, Duluth and Douglas County, WI
- City of Ramsey, Ponds Development – Ramsey, MN
- Enbridge Energy, Alberta Clipper Pipeline (323 miles) – MN and ND
- Enbridge Energy, Line Separation Survey – ND and MN
- Enbridge Energy, Phase I and Pre-Demolition Surveys – MN
- Great Lakes Gas 1998 Expansion Project (72-mile pipeline) – MN and WI
- Great River Energy, Transmission Line (six-mile, 69 kV) – Superior, WI
- Gulf South, Proposed Natural Gas Pipeline (180 miles) – MN
- InfraSource, Southwest Iowa Renewal Energy (SIRE) Pipeline (one mile) – Council Bluffs, IA
- Lake Country Power, Substation – MN
- Montana-Dakota Utilities Co., Cherokee Pipeline – (22 miles) Cherokee, IA
- Montana-Dakota Utilities Co., Corning Pipeline – (14 miles) Corning, IA
- Montana-Dakota Utilities Co., Grand Junction Pipeline (8.5 miles) – Grand Junction, IA
- Montana-Dakota Utilities Co., Homeland Energy Solutions Pipeline – (six miles) New Hampton, IA
- Montana-Dakota Utilities Co., Horizon Pipeline – (11 miles) Jewell, IA
- Montana-Dakota Utilities Co., Plymouth Energy Pipeline – (six miles) Merrill, IA
- Xcel Energy, Phase I and Pre-Demolition Surveys – MN



SPECIALTY

Project Management
Environmental Permitting
Threatened and Endangered Species
Wetlands
Feasibility Studies

EDUCATION

M.B.A., Carlson School of Management, University of Minnesota-Minneapolis

B.S., Environmental Science and Business Administration, Minnesota State University-Mankato

MEMBERSHIPS

Economic Development Association of Minnesota
Midwest ENERGY Association
Minnesota Blue Flame Gas Association

PROFESSIONAL DEVELOPMENT

OSHA, 40-Hour Health and Safety Training

OSHA, Annual 8-Hour Refresher Training

WI Dept of Natural Resources
Karner Blue Butterfly Habitat Conservation Plan Effectiveness Monitoring Training, 2000

Federal Energy Regulatory Commission Natural Gas Pipeline Environmental Compliance Workshop, 1997

PROPOSAL FOR:

North Dakota Public Service Commission
Public Utilities Division
Consulting Services for Post-Construction Siting Inspections
Solicitation # PU-10-123

Appendix A – Resumes



Gregory A. Wheeler, J.D.

President and General Counsel / Principal-in-Charge

Mr. Wheeler has over 23 years of experience in administrative, regulatory, real estate and contract law, real estate and right of way acquisition, linear project routing, and construction permitting issues. He is an attorney licensed in the states of Minnesota, Wisconsin and Arizona, specializing in right of way and land acquisition for utilities, municipalities, state and federal agencies, and private infrastructure developments, and is well-versed in the Uniform Relocation Assistance and Real Property Acquisition Policies Act of 1970.

Mr. Wheeler is proficient with all aspects of land acquisition issues including routing, title continuation, field title investigation, direct purchase, title review, landowner liaison, relocation, public relations, and appraisal review for comparable sales. He also participates in regulatory proceedings and public meetings, zoning compliance and hearings, state and federal agency liaison, and testimony/brief drafting assistance for certificated projects.

While employed at Wisconsin Gas Company, Natural Resource Group and Lakehead/Enbridge Pipeline, Mr. Wheeler managed the right of way acquisition, regulatory, legal, condemnation, environmental and/or public outreach programs for dozens of linear projects, including four that were in excess of 300 miles (two were in active acquisition simultaneously). Mr. Wheeler has managed all types of linear projects, including large scale pipelines, fiber optics, sanitary sewers and power lines. He is well-versed in all disciplines associated with routing, permitting and securing right of way for linear projects.

SPECIALTY

Project Management
Acquisition
Relocation
Public Relations

EDUCATION

J.D., Marquette University Law School – Milwaukee, Wisconsin, 1989

B.A., Management and Economics, University of North Dakota-Grand Forks

LICENSES/REGISTRATIONS

Licensed Attorney
Minnesota
Wisconsin
Arizona
Western and Eastern Federal District Courts of Wisconsin

MEMBERSHIPS

American Bar Association (ABA)
Member of the Bar
Minnesota
Wisconsin
Arizona
International Right of Way Association (IRWA)

Representative Experience

- American Tower, 2C Certification Surveys – Multiple sites in MN, SD and ND
- CenterPoint Energy (pipeline) – Fridley, Minneapolis, Andover and Coon Rapids, MN
- CenterPoint Energy, Riverside Pipeline (17-mile pipeline) – Minneapolis, MN
- Cities of Eagan and Inver Grove Heights, TH 149 Road Realignment – Dakota County, MN
- City of Cedar Rapids, Flood Documentation Services – Cedar Rapids, IA
- City of Cedar Rapids, Flood-Related Acquisition/Relocation “Greenway Area” – Cedar Rapids, IA
- City of Cedar Rapids, Flood-Related Acquisition, Construction Study Area and Neighborhood Revitalization Area – Cedar Rapids, IA
- City of Coon Rapids, Port Riverwalk Redevelopment – Coon Rapids, MN
- City of Duluth, Great Lakes Interconnect Pipeline (10-inch diameter, 5.3 miles) – St. Louis County, Duluth and Douglas County, WI
- City of Duluth, Munger Trail Extension – Duluth, MN
- City of Ramsey Redevelopment, Acquisition and Relocation, Road Relocation – Ramsey, MN

PROPOSAL FOR:

North Dakota Public Service Commission
Public Utilities Division
Consulting Services for Post-Construction Siting Inspections
Solicitation # PU-10-123

Appendix A – Resumes

Gregory A. Wheeler, J.D.
Page 2

PROFESSIONAL DEVELOPMENT

Thirty credits of Continuing Legal Education every two years for Attorney licensure (courses include the Mn/DOT Conference each of the last six years, and dozens of other title, ethics and bias courses to maintain licenses)

International Right of Way Association (IRWA) courses involving acquisition, relocation and title

- City of St. Paul, Pierce Butler Route Extension – St. Paul, MN
- City of South St. Paul, South St. Paul Municipal Airport (SGS) Obstruction Removal (and associated contractor and Xcel Utility Coordination) – South St. Paul, MN
- Enbridge Energy, Alberta Clipper Pipeline (323 miles) – ND, MN and WI
- Enbridge Energy, Southern Lights Pipeline (323 miles) – ND, MN and WI
- Enbridge Pipelines (North Dakota) LLC, Right of Way Projects, Pump Stations, Pipelines and Maintenance Support – ND
- Enbridge Pipelines (North Dakota) LLC, Trenton to Beaver Lodge (52-mile pipeline and five pump stations) – ND
- Enbridge Pipelines, Electrical Substations, Transmission Lines and Pump Station Sites (eight-mile, 69 kV transmission line; two substations; 12 pump stations) – ND
- Great River Energy, Barton to Stinson (six-mile, 69 kV transmission line) – Superior, WI
- Great River Energy, Transmission Line (five-mile, 115 kV) – Superior, WI
- Great River Energy, West Metro Transmission Line Upgrades (12-mile, 230 kV) – Minneapolis, MN
- Metropolitan Airports Commission (MAC), Crystal Airport (MIC) Obstruction Removal (and associated contractor and Xcel Utility Coordination) – Crystal, MN
- Metropolitan Council, Dayton-Hassan Extension to Elm Creek Interceptor Line (three miles) – Maple Grove, MN
- Metropolitan Council, Elko-New Market Interceptor Line (five miles) – Elko, MN
- Metropolitan Council, Empire Township Outfall Sewer Line (14 miles) – Rosemount, MN
- Metropolitan Council, Northeast Interceptor Phase I (14 miles) – St. Paul to Maplewood, MN
- Metropolitan Council, Victoria Interceptor Line (22 miles) – Victoria, Minnesota
- Mill Towns Trail (10 miles) for Cities of Northfield, Faribault and Dundas; State of Minnesota; and Rice County – Rice County, MN
- Minnesota Department of Transportation, TH Highway 52 Reconstruction – Preston to Fountain, MN
- Minnesota Power, Power-Up Wisconsin (250-mile, 345 kV transmission line) – Duluth, MN
- Montana-Dakota Utilities Co., Cherokee Pipeline (22 miles) – Cherokee, IA
- Montana-Dakota Utilities Co., Corning Pipeline (14 miles) – Corning, IA
- Montana-Dakota Utilities Co., Grand Junction Pipeline (8.5 miles) – Grand Junction, IA
- Montana-Dakota Utilities Co., Jewell Pipeline (11 miles) – Jewell, IA
- Montana-Dakota Utilities Co., New Hampton Pipeline (8.5 miles) – New Hampton, IA
- MP Telecom and IPL Telecom, Fiber Optic Line – MN, WI and IL

PROPOSAL FOR:

North Dakota Public Service Commission
Public Utilities Division
Consulting Services for Post-Construction Siting Inspections
Solicitation # PU-10-123

Appendix A – Resumes

Gregory A. Wheeler, J.D.
Page 3

- Pivotal Communications/PF.NET, Fiber Optic Line (100 miles) – IL
- Seren Innovations, Fiber/Cable Installation – Stearns County, MN
- Rice's Point, Road Construction, Duluth Port Authority, City of Duluth, and State of Minnesota – MN
- Southern Minnesota Municipal Power Agency, 115 kV Transmission Line Routing and Substation Configuration (five miles) – Redwood Falls, MN
- Southern Minnesota Municipal Power Agency, 69 kV Transmission Line Routing (three miles) – St. Peter, MN
- Sprint PCS, Wireless Tower Site Acquisitions – Southeastern MN
- Williams Communications (30-mile fiber, metro area build) – Minneapolis and St. Paul, MN
- Xcel Energy, Loon Lake (14-mile, 115 kV transmission line) – Rice County, MN

Experience With Other Firms

- Vector Pipeline Company, LP, Vector Pipeline – IL, IN and MI (340 miles)
- Lakehead Pipe Line Company, LP – WI and IL (460 miles)

PROPOSAL FOR:

North Dakota Public Service Commission
Public Utilities Division
Consulting Services for Post-Construction Siting Inspections
Solicitation # PU-10-123

Appendix A – Resumes

Scott T. Stenger

Project Manager / Possible Inspector



SPECIALTY

Project Management
Real Estate Broker
Acquisition Specialist
Title Work

EDUCATION

B.A., Business Administration,
University of Minnesota-
Minneapolis

LICENSES/REGISTRATIONS

Licensed Real Estate Broker
Minnesota
Iowa

Licensed Real Estate
Salesperson
Minnesota

Licensed Abstractor
Minnesota

Notary Public
Minnesota
Iowa

MEMBERSHIPS

Economic Development
Association of Minnesota
(EDAM)

International Right of Way
Association (IRWA)

Mr. Stenger has over 21 years of experience with right of way project management, site acquisition, land title abstracting, and examination services for major construction projects. He is a Licensed Abstractor and Real Estate Broker, accomplished with title research and examinations, title continuations, field title investigations, direct purchase, reporting, relocation, and landowner negotiations and liaison. Mr. Stenger has extensive knowledge with the application of Minnesota statutes and regulations regarding construction projects, and has completed the direct purchase of properties in Minnesota, North Dakota, South Dakota, Wisconsin, Iowa and Illinois.

Representative Experience

- Montana-Dakota Utilities Co., Cherokee Pipeline (22 miles) – Cherokee, IA
- Montana-Dakota Utilities Co., Corning Pipeline (14 miles) – Corning, IA
- Montana-Dakota Utilities Co., Grand Junction Pipeline (8.5 miles) – Grand Junction, IA
- Montana-Dakota Utilities Co., Jewell Pipeline (11 miles) – Jewell, IA
- Montana-Dakota Utilities Co., New Hampton Pipeline (8.5 miles) – New Hampton, IA
- Montana-Dakota Utilities Co., Plymouth Energy Pipeline (six miles) – Merrill, IA
- Great River Energy, Transmission Line (five-mile, 115 kV) – Superior, WI
- Great River Energy, Transmission Line Upgrade – Blaine, MN
- Great River Energy, West Metro Transmission Line Upgrades (12-mile, 230 kV) – Minneapolis, MN
- Lindquist and Vennum, Landowner Representation for Condemnation – Southern MN
- Metropolitan Council, Dayton-Hassan Extension to Elm Creek Interceptor (three miles) – Maple Grove, MN
- Metropolitan Council, Elko-New Market Interceptor Line (five miles) – Elko, MN
- Metropolitan Council, Empire Township Outfall Sewer Line (14 miles) – Rosemount, MN
- Metropolitan Council, Metro Meter Station Improvements – Minneapolis-St. Paul Metropolitan Area, MN
- Metropolitan Council, Northeast Interceptor Phase I (14 miles) – St. Paul to Maplewood, MN
- Metropolitan Council, Victoria Interceptor Line (22 miles) – Victoria, MN
- Mill Towns Trail (10-miles) for Cities of Northfield, Faribault and Dundas; State of Minnesota; and Rice County, Minnesota – Rice County, MN
- Minnesota Department of Transportation, Central Light Rail Project – St. Paul, MN

PROPOSAL FOR:

North Dakota Public Service Commission
Public Utilities Division
Consulting Services for Post-Construction Siting Inspections
Solicitation # PU-10-123

Appendix A – Resumes

Scott T. Stenger
Page 2

**PROFESSIONAL
DEVELOPMENT**

Numerous International Right of
Way Association (IRWA)
courses

Numerous Real Estate
Continuing Education courses

- American Tower, 2C Certification Surveys – Multiple sites in MN, SD, ND
- AT&T Wireless Tower Site Acquisitions – Manhattan, NY
- CenterPoint Energy, Riverside Pipeline (17 miles) – Minneapolis, MN
- City of Cedar Rapids, Flood Documentation Services – Cedar Rapids, IA
- City of Cedar Rapids, Flood-Related Acquisition, Construction Study Area and Neighborhood Revitalization Area – Cedar Rapids, IA
- City of Cedar Rapids, Flood-Related Acquisition/Relocation “Greenway Area” – Cedar Rapids, IA
- City of Champlin, Mississippi Crossings Redevelopment – Champlin, MN
- City of Columbia Heights, Industrial Park Redevelopment – Columbia Heights, MN
- City of Coon Rapids, Port Riverwalk Redevelopment – Coon Rapids, MN
- City of Duluth, Munger Trail Extension – Duluth, MN
- City of Duluth, Natural Gas Pipeline (10 miles) – Duluth, MN
- City of Duluth, Natural Gas Pipeline (six miles) – Duluth, MN
- City of Duluth, Pipeline and Road Projects, Title, Acquisition, and Regulatory and Environmental Permitting – Duluth, MN
- City of Fridley, Trail Project – Fridley, MN
- City of Ramsey, Redevelopment Projects, Acquisition and Relocation, and Road Relocation – Ramsey, MN
- City of Ramsey, Relocation Services – Ramsey, MN
- City of Ramsey, Water Lines and Sanitary Sewer Upgrades – Ramsey, MN
- DM&E Railroad, Real Estate Flood-Related Services – South Dakota, MN
- Duluth Port Authority, Davis B. Helberg Road Project and Rail Interconnect – Duluth, MN
- Enbridge Energy, Alberta Clipper Pipeline (323 miles) – ND, MN, WI
- Enbridge Energy, Southern Lights Pipeline (323 miles) – ND, MN, WI
- Great River Energy, Barton to Stinson (six-mile, 69 kV transmission line) – Superior, WI
- Minnesota Department of Transportation, TH 212 – Carver County, MN
- Minnesota Department of Transportation, TH 23 – Stearns County, MN
- Minnesota Department of Transportation, TH 36 – North St. Paul, MN
- Minnesota Department of Transportation, TH 52 Highway Reconstruction – Preston to Fountain, MN
- Minnesota Energy Resources Corporation, Natural Gas Pipeline (three miles) – Cloquet, MN
- Minnesota Energy Resources Corporation, Natural Gas Pipeline – Apple Valley, MN
- Minnesota Energy Resources Corporation, Natural Gas Pipeline – Rochester, MN
- Minnesota Power, Power-Up Wisconsin (250-mile, 345 kV transmission line) – Duluth, MN

PROPOSAL FOR:

North Dakota Public Service Commission
Public Utilities Division
Consulting Services for Post-Construction Siting Inspections
Solicitation # PU-10-123

Appendix A – Resumes

Scott T. Stenger
Page 3

- MP Telecom and IPL Telecom, Fiber Optic Line – MN, WI, IL
- Nextel Wireless Tower Site Acquisition – MN and WI
- Pivotal Communications, Multiple Fiber Optic Projects – MN, WI, IL
- Pivotal Communications/PF.NET, Fiber Optic Line (100 miles) – IL
- Seren Innovations, Fiber/Cable Installation – Stearns County, MN
- Southern Minnesota Municipal Power Agency, 115 kV Transmission Line Routing and Substation Configuration (five miles) – Redwood Falls, MN
- Southern Minnesota Municipal Power Agency, 69 kV Transmission Line Routing (three miles) – St. Peter, MN
- Sprint PCS, Wireless Tower Site Acquisitions – Southern MN
- Williams Communications, 30-mile Fiber, Metro Area Build – Minneapolis and St. Paul, MN
- Williams Pipeline Company, Permitting through numerous City, County, and DOT Entities – IL
- Williams Pipeline Company, Real Estate Support Services for Operations – MN, IA, IL, SD and ND
- Xcel Energy, Loon Lake (14-mile, 115 kV transmission line) – Rice County, MN

Chuck Danchertsen – Inspector / Possible Project Manager

- Education** B.S. Degree, Business Administration
University of Tulsa
- Licenses** Minnesota real estate sales person
- Specialization**
- ◆ Over 25 years of experience managing the operations and maintenance of pipelines, terminals, and pump stations
 - ◆ Negotiate purchase options for pump stations
 - ◆ Maintenance digs, landowner notifications and damage settlements
 - ◆ Pipeline maintenance and operations
 - ◆ Inspection maintenance record management
 - ◆ Public relations
 - ◆ Compliance and liaison with state and federal regulators
 - ◆ Mainline maintenance
 - ◆ Budget and financial controls
 - ◆ Personnel administration

Bill Kallberg – Inspector / Possible Project Manager

- Education** B.A. Civil Engineering, University of Minnesota
- Specialization**
- ◆ Over 40 years of pipeline experience
 - ◆ Construction inspection
 - ◆ Expert witness specializing in issues related to pipeline safety regulations involving both gas (Part 192) and hazardous liquids (Part 195) pipeline systems
 - ◆ Performed and directed pipeline design, construction, operation, and maintenance
 - ◆ Record-keeping, development of operation & maintenance plans, construction standards, material standards and contractor audits
 - ◆ Craft training, welder qualification, operator qualification programs and plans, pipeline safety inspector training, expert witness testimony and operator qualification evaluator training
 - ◆ Qualified and has qualified others in joining of plastic by heat fusion, electro fusion and mechanical joints

Jerry Lemons – Inspector / Possible Project Manager

Education BA Economics/ Education, University of Northern Iowa, Cedar Falls
National Safety Council's – Advanced Safety Certificate

Additional Training

24-Hour HAZWOPER – Hazardous Materials Technician
20-Hour OPA - Incident Commander
Process Safety Management of Highly Hazardous Chemicals
Safety Management Techniques (NSC)
Principles of Occupational Safety & Health (NSC)
Federal Hazardous Material Regulations
16-Hour On-Water Spill Response Training

- Specialization**
- ◆ Over 36 years of pipeline experience
 - ◆ Organize and direct operations and maintenance activities of pipelines, terminals, pumping stations
 - ◆ Personnel activities direction
 - ◆ Ensure company business objectives are met relating to terminal and station operations and maintenance
 - ◆ Environmental and regulatory compliance
 - ◆ Emergency response
 - ◆ Employee training and safety
 - ◆ Financial planning and budgeting
 - ◆ Safety training and development of safety programs and procedures
 - ◆ Conduct facility audits and safety inspections

Tony Downie – Inspector / Possible Project Manager

Education Bachelor of Arts, University of Nebraska

- Specialization**
- ◆ Over 25 years of tested pipeline operations and management experience
 - ◆ Regulatory compliance and measurement, DOT 49 CFR Part 195
 - ◆ Management of pipeline operations and maintenance
 - ◆ Management of mainline pump stations,, mainlines, terminals and construction activities
 - ◆ Safety and facility inspections

PROPOSAL FOR:

North Dakota Public Service Commission
Public Utilities Division
Consulting Services for Post-Construction Siting Inspections
Solicitation # PU-10-123

Appendix A – Resumes

Richard Wittkamp – Inspector / Possible Project Manager

Education Operator Qualification, Supervision, and Management.

- Specialization
- ♦ 28 years of pipeline experience
 - ♦ High voltage electrician
 - ♦ Line Foreman
 - ♦ Quality inspection of pipelines and tanks

Steve Sweney – Inspector

Education B.S. in Geological Engineering, South Dakota School of Mines & Technology

- Specialization
- ♦ Over 35 years of pipeline experience
 - ♦ Perform inspections
 - ♦ Supervise inspectors/investigators
 - ♦ Investigate accidents and complaints
 - ♦ Write written reports
 - ♦ Evaluate operators’ policies and procedures
 - ♦ Issue written enforcement actions
 - ♦ Train staff according to OSHA and other standards
 - ♦ Design & supervise construction of pipeline installations

John Finstad – Inspector

Education B.S. Degree, Ag Economy, North Dakota State University, Fargo

- Specialization
- ♦ Environmental inspector for pipelines
 - ♦ Agricultural specialist
 - ♦ Project management
 - ♦ Pipeline environmental inspection
 - ♦ North Dakota farm owner

PROPOSAL FOR:

North Dakota Public Service Commission
Public Utilities Division
Consulting Services for Post-Construction Siting Inspections
Solicitation # PU-10-123

Appendix A – Resumes

Tom Nickel – Inspector

Education	B.S. Degree, Forest Resources and Conservation, University of Florida-Gainesville
Licenses	Certified Wetland Delineator, Minnesota Certified Master Wildlifer Certified Plant Professional, Georgia
Specialization	<ul style="list-style-type: none">♦ Wetlands, regulatory and environmental permitting, and threatened and endangered species♦ Performs wetland jurisdictional determinations and assessments♦ Prepares environmental assessment worksheets and state and federal environmental permit applications♦ Administers and design water quality monitoring programs♦ Conducts compliance monitoring for industrial concerns♦ Other duties associated with wetlands, water resources, wildlife habitat and land use

Tom Nash – Inspector / Possible Project Manager

Education	Real Estate, Kaplan Schools, St. Paul, Minnesota Cisco Networking Certification, Inver Grove College, Inver Grove Heights, Minnesota
Licenses	Licensed Real Estate Salesperson, Minnesota, Iowa (pending) Notary Public, Minnesota
Specialization	<ul style="list-style-type: none">♦ Knowledgeable with inspection and identification of property damage including analyzing insurance summary statements for accuracy of damage and repair options and negotiations of insurance claims♦ Familiar with building codes♦ Frequently partners with city planning commissions, city councils, DOT and property owners to establish ordinances for various issues♦ Managed subcontractors♦ Project management♦ Coordinated with construction management

PROPOSAL FOR:

North Dakota Public Service Commission
Public Utilities Division
Consulting Services for Post-Construction Siting Inspections
Solicitation # PU-10-123

Appendix A – Resumes

Linda Douglas – Inspector

Education	B.S. Degree, Environmental Studies, Metropolitan State University, St. Paul, Minnesota
Licenses	Licensed Real Estate Salesperson, Minnesota, Iowa Notary Public, Minnesota (pending), Iowa
Specialization	<ul style="list-style-type: none">♦ Analyzing real estate data and related construction drawings and negotiating unique project details♦ Conducted damage settlements♦ Managed on-call notifications♦ Coordinated details with contractors

April 30, 2008



North Dakota Public Service Commission
Public Utilities Division
600 East Boulevard Avenue, Dept 408
Bismarck, North Dakota 58505-0480

RE: Request For Proposal
Consulting Services for
ProSource Technologies, Inc.

Please accept this letter of recommendation for Curt Proud of ProSource Technologies, Inc. in connection with the proposed work for the North Dakota Public Service Commission. We understand the project involves inspection services on a pipeline construction project and other work analyzing energy conversion and transportation facility siting applications.

We dealt with Curt regarding easement and construction issues for three large diameter sewer interceptor lines that were constructed by the Metropolitan Council on our agricultural land that will soon be mined for sand and gravel. As a representative of the Metropolitan Council, Curt anticipated engineering, land use and construction issues, listened to our problems and handled the necessary follow up and resolution. We have also dealt with Curt when he was employed with Williams Pipe Line Company and have since consulted with him on pipeline issues. Based upon our dealings with Curt on various projects, we believe he is well suited to represent the North Dakota Public Service Commission to provide inspection services and develop Permit specifications on behalf to the State.

Sincerely,

A handwritten signature in black ink, appearing to read "Bob Bieraugel", written over a white background.

Bob Bieraugel
Assistant Vice President

cc: Curtis M. Proud
ProSource Technologies, Inc.

**AGGREGATE INDUSTRIES
NORTH CENTRAL REGION**

2915 Waters Road, Suite 105
Eagan, MN 55121
Telephone (651) 683-0600
Facsimile (651) 683-8108
www.aggregate-us.com

An Equal Opportunity Employer

An AGGREGATE INDUSTRIES company



May 6, 2008

North Dakota Public Service Commission
Public Utilities Division
600 East Boulevard Avenue, Dept 408
Bismarck, North Dakota 58505-0480

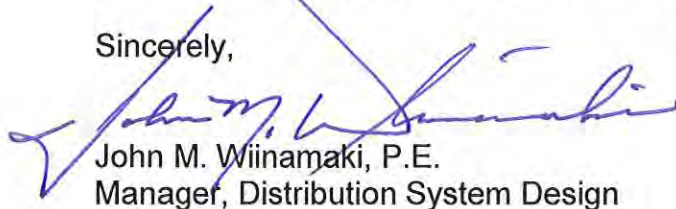
RE: Request For Proposal
Consulting Services for
ProSource Technologies, Inc.

With respect to proposed work for the North Dakota Public Service Commission, I am providing the following recommendation for ProSource Technologies, Inc. (ProSource). ProSource has performed technically and ethically well for CenterPoint Energy and has demonstrated experience in projects that involve consulting services of pipeline construction projects and professional support of facility siting applications.

CenterPoint Energy has employed ProSource to perform various services in connection with the construction of pipelines in Minnesota. The staff of ProSource is knowledgeable of the principles of pipeline design, construction and operation and the related State and Federal regulations. On past projects, ProSource has demonstrated compliance with company procedures, governmental regulations, and fair and professional treatment of landowners.

Based upon past successful projects with ProSource, I would highly recommend that the North Dakota Public Service Commission consider acceptance of ProSource to provide inspection services and develop permit specifications for energy projects on behalf of the State of North Dakota.

Sincerely,



John M. Wiinamaki, P.E.
Manager, Distribution System Design

cc: Gregory A. Wheeler
ProSource Technologies, Inc.



CITY OF DULUTH
DEPARTMENT OF PUBLIC WORKS & UTILITIES
Engineering Division
211 City Hall • Duluth, Minnesota 55802
(218) 730-5200 Fax: (218) 730-5907

April 30, 2008

North Dakota Public Service Commission
Public Utilities Division
600 East Boulevard Avenue, Dept 408
Bismarck, North Dakota 58505-0480

RE: Request For Proposal
Consulting Services for
ProSource Technologies, Inc.

The purpose of this letter is to recommend ProSource Technologies, Inc. (ProSource) to the North Dakota Public Service Commission regarding the above referenced request for proposals for consulting services. It is our opinion that ProSource would be well qualified to provide consulting services to the North Dakota Public Service Commission in association with facility siting projects and construction inspection projects.

The City of Duluth contracted ProSource to provide various services related to regulatory and environmental permitting and right-of-way acquisition for pipeline projects. These services included performing environmental inspections in compliance with FERC regulations. ProSource is very knowledgeable of State and Federal regulations governing pipeline projects, as well as right-of-way acquisition and construction details. ProSource has successfully worked with regulators and landowners to obtain the necessary permits and agreements.

ProSource's consulting services would be an asset to the staff at the North Dakota Public Service Commission.

Sincerely,

Larry L. Winner, P.E.
Project Engineer

cc: Gregory A. Wheeler
ProSource Technologies, Inc.



May 1, 2008

North Dakota Public Service Commission
Public Utilities Division
600 East Boulevard Avenue, Dept 408
Bismarck, North Dakota 58505-0480

RE: Request For Proposal
Consulting Services for
ProSource Technologies, Inc.

This is a recommendation letter for ProSource Technologies, Inc. (ProSource) to the North Dakota Public Service Commission regarding the above referenced request for proposals for consulting services. I worked with ProSource on various pipeline projects and it is my opinion that they are well qualified to provide consulting services to the North Dakota Public Service Commission in association with facility siting projects and construction inspection projects.

The services provided by ProSource included regulatory and environmental permitting and right-of-way acquisition for pipeline projects. ProSource has a strong knowledge of State and Federal pipeline regulations, as well as construction and right-of-way acquisition procedures. It is my understanding that many ProSource employees are former pipeline employees and can provide valuable expertise to the construction inspection for the North Dakota Public Service Commission. ProSource has worked very well with regulators and landowners throughout the pipeline permitting process and pipeline construction.

It is my opinion that ProSource's experience and knowledge would be valuable to the staff at the North Dakota Public Service Commission by assisting with the analysis of route siting applications as well as providing construction inspection.

Sincerely,

A handwritten signature in black ink that reads "Douglas M. Lee".

Douglas M. Lee, P.E.
Vice President of Energy Projects

cc: Gregory A. Wheeler
ProSource Technologies, Inc.
ProSource Underground Services, LLC

1200 Roosevelt Road, Suite 400 • Glen Ellyn, IL 60137
Tel. 630.613.3300 • Fax 630.613.3333

LAW OFFICES OF
FLECK, MATHER & STRUTZ, LTD.

400 East Broadway, Suite 600, Wells Fargo Bank Building
P. O. Box 2798, Bismarck, North Dakota 58502

Telephone: 701-223-6585 Facsimile: 701-222-4853 E-Mail: fms@flecklaw.com Website: www.flecklaw.com

GARY R. WOLBERG+
PAUL W. SUMMERS
BRIAN R. BJELLA**
JOHN W. MORRISON
CURTIS L. WIKE**
CRAIG C. SMITH**

ALSO LICENSED IN:

* Minnesota
° Montana
+ Iowa
^ Wyoming
□ Nebraska

April 30, 2008

SHANE A. HANSON
MICHAEL C. WALLER°
PETRA H. MANDIGO°
CHRISTOPHER D. FRIEZ
CRAIG B. BURNS
WADE C. MANN

ERNEST R. FLECK
(1921-1995)
RUSSELL R. MATHER
(RETIRED)
WILLIAM A. STRUTZ
(RETIRED)

North Dakota Public Service Commission
Public Utilities Division
600 East Boulevard Avenue, Dept. 408
Bismarck, ND 58505-0480

In re: Request for Proposal
Consulting Services for
ProSource Technologies, Inc.

With respect to proposed work for the North Dakota Public Service Commission, I would like to recommend ProSource Technologies, Inc. This endorsement is based upon my work with ProSource when we were each performing services in North Dakota for Enbridge Pipelines (North Dakota) LLC.

My contacts with ProSource staff primarily concerned acquisition of easements and compliance with the Public Service Commission requirement to obtain waivers from certain landowners. ProSource staff were well informed and actively worked with the project team to assure compliance with this requirement of the Public Service Commission. To the best of my knowledge, ProSource conducted its dealings with landowners and other parties in a professional and honest manner.

Based upon my work with ProSource, I found their staff to be very professional and ethical in their business practices.

Very truly yours,



BRIAN R. BJELLA

cc: Curtis M. Proud
ProSource Technologies, Inc.



VIC'S CRANE & HEAVY HAUL, INC.

3000 145th Street East, Rosemount, MN 55068

visit us at www.vicsco.com

Dispatch (651) 423-7400 Business Office (651) 423-2317 Fax (651) 423-7402

April 30, 2008

North Dakota Public Service Commission
Public Utilities Division
600 East Boulevard Avenue, Dept 408
Bismarck, North Dakota 58505-0480

RE: Request For Proposal
Consulting Services For
ProSource Technologies, Inc.

We are submitting this letter of recommendation for ProSource Technologies, Inc. in connection with the proposed work for the North Dakota Public Service Commission. We understand the project involves inspection services on a pipeline construction project and other work analyzing energy conversion and transportation facility siting applications. We believe that ProSource is technically and ethically well suited for this project.

We dealt with a representative of ProSource regarding easement and construction issues on our land for three large diameter sewer interceptor lines that were constructed by the Metropolitan Council. As a representative of the Metropolitan Council, ProSource anticipated engineering and construction issues, listened to our problems and handled the necessary follow up and resolution. We believe ProSource is well suited to represent the North Dakota Public Service Commission to provide inspection services on behalf to the State.

Sincerely,

Carol Hickman
Owner/Property Management

cc: Curtis M. Proud
ProSource Technologies, Inc.

ACORD™ CERTIFICATE OF LIABILITY INSURANCE

DATE (MM/DD/YYYY)
02/19/2009

PRODUCER (952)707-8200 FAX (952)890-0535
Kraus-Anderson Insurance
 420 Gateway Boulevard
 Burnsville, MN 55337-2790

INSURED **ProSource Technologies, Inc.**
 9219 East River Road NW
 Coon Rapids, MN 55433

THIS CERTIFICATE IS ISSUED AS A MATTER OF INFORMATION ONLY AND CONFERS NO RIGHTS UPON THE CERTIFICATE HOLDER. THIS CERTIFICATE DOES NOT AMEND, EXTEND OR ALTER THE COVERAGE AFFORDED BY THE POLICIES BELOW.

INSURERS AFFORDING COVERAGE NAIC #

INSURER A: **Endurance American Specialty Insurance Co.**
 INSURER B: **Secura Insurance A Mutual Co.**
 INSURER C:
 INSURER D:
 INSURER E:

COVERAGES

THE POLICIES OF INSURANCE LISTED BELOW HAVE BEEN ISSUED TO THE INSURED NAMED ABOVE FOR THE POLICY PERIOD INDICATED. NOTWITHSTANDING ANY REQUIREMENT, TERM OR CONDITION OF ANY CONTRACT OR OTHER DOCUMENT WITH RESPECT TO WHICH THIS CERTIFICATE MAY BE ISSUED OR MAY PERTAIN, THE INSURANCE AFFORDED BY THE POLICIES DESCRIBED HEREIN IS SUBJECT TO ALL THE TERMS, EXCLUSIONS AND CONDITIONS OF SUCH POLICIES. AGGREGATE LIMITS SHOWN MAY HAVE BEEN REDUCED BY PAID CLAIMS.

INSR LTR	ADD'L INSRD	TYPE OF INSURANCE	POLICY NUMBER	POLICY EFFECTIVE DATE (MM/DD/YY)	POLICY EXPIRATION DATE (MM/DD/YY)	LIMITS
A		GENERAL LIABILITY <input checked="" type="checkbox"/> COMMERCIAL GENERAL LIABILITY <input type="checkbox"/> CLAIMS MADE <input checked="" type="checkbox"/> OCCUR <input checked="" type="checkbox"/> Contractors Poll. <input checked="" type="checkbox"/> Contractual Liab. GEN'L AGGREGATE LIMIT APPLIES PER: <input type="checkbox"/> POLICY <input type="checkbox"/> PRO-JECT <input type="checkbox"/> LOC	ECC101003690-00	11/01/2008	11/01/2009	EACH OCCURRENCE \$ 3,000,000 DAMAGE TO RENTED PREMISES (Ea occurrence) \$ 50,000 MED EXP (Any one person) \$ 5,000 PERSONAL & ADV INJURY \$ 3,000,000 GENERAL AGGREGATE \$ 3,000,000 PRODUCTS - COMP/OP AGG \$ 3,000,000
B		AUTOMOBILE LIABILITY <input checked="" type="checkbox"/> ANY AUTO <input type="checkbox"/> ALL OWNED AUTOS <input type="checkbox"/> SCHEDULED AUTOS <input type="checkbox"/> HIRED AUTOS <input type="checkbox"/> NON-OWNED AUTOS	20-A-3107494	11/01/2008	11/01/2009	COMBINED SINGLE LIMIT (Ea accident) \$ 1,000,000 BODILY INJURY (Per person) \$ BODILY INJURY (Per accident) \$ PROPERTY DAMAGE (Per accident) \$
		GARAGE LIABILITY <input type="checkbox"/> ANY AUTO				AUTO ONLY - EA ACCIDENT \$ OTHER THAN EA ACC \$ AUTO ONLY: AGG \$
A		EXCESS/UMBRELLA LIABILITY <input checked="" type="checkbox"/> OCCUR <input type="checkbox"/> CLAIMS MADE <input type="checkbox"/> DEDUCTIBLE <input checked="" type="checkbox"/> RETENTION \$ 0	EXS101003691-00	11/01/2008	11/01/2009	EACH OCCURRENCE \$ 3,000,000 AGGREGATE \$ 3,000,000 \$ \$ \$
B		WORKERS COMPENSATION AND EMPLOYERS' LIABILITY ANY PROPRIETOR/PARTNER/EXECUTIVE OFFICER/MEMBER EXCLUDED? If yes, describe under SPECIAL PROVISIONS below	20-WC-3107495	11/01/2008	11/01/2009	<input checked="" type="checkbox"/> WC STATUTORY LIMITS <input type="checkbox"/> OTH-ER E.L. EACH ACCIDENT \$ 1,000,000 E.L. DISEASE - EA EMPLOYEE \$ 1,000,000 E.L. DISEASE - POLICY LIMIT \$ 1,000,000
A		OTHER Professional Liability Claims-Made Form RETROACTIVE DATE: 11/24/97	ECC101003690-00	11/01/2008	11/01/2009	Agg. Incl. In Gen. Liab. Occurrence \$3,000,000 Deductible Each Loss: \$10,000

DESCRIPTION OF OPERATIONS / LOCATIONS / VEHICLES / EXCLUSIONS ADDED BY ENDORSEMENT / SPECIAL PROVISIONS

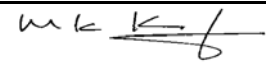
CERTIFICATE HOLDER

CANCELLATION

FOR INFORMATIONAL PURPOSES ONLY

SHOULD ANY OF THE ABOVE DESCRIBED POLICIES BE CANCELLED BEFORE THE EXPIRATION DATE THEREOF, THE ISSUING INSURER WILL ENDEAVOR TO MAIL _____ DAYS WRITTEN NOTICE TO THE CERTIFICATE HOLDER NAMED TO THE LEFT, BUT FAILURE TO MAIL SUCH NOTICE SHALL IMPOSE NO OBLIGATION OR LIABILITY OF ANY KIND UPON THE INSURER, ITS AGENTS OR REPRESENTATIVES.

AUTHORIZED REPRESENTATIVE
Mark N. Kampf/TAMMY



IMPORTANT

If the certificate holder is an ADDITIONAL INSURED, the policy(ies) must be endorsed. A statement on this certificate does not confer rights to the certificate holder in lieu of such endorsement(s).

If SUBROGATION IS WAIVED, subject to the terms and conditions of the policy, certain policies may require an endorsement. A statement on this certificate does not confer rights to the certificate holder in lieu of such endorsement(s).

DISCLAIMER

The Certificate of Insurance on the reverse side of this form does not constitute a contract between the issuing insurer(s), authorized representative or producer, and the certificate holder, nor does it affirmatively or negatively amend, extend or alter the coverage afforded by the policies listed thereon.

PROPOSAL FOR:

North Dakota Public Service Commission
Public Utilities Division
Consulting Services for Post-Construction Siting Inspections
Solicitation # PU-10-123

7.03 Conflicts of Interest

Because of the project experience of ProSource and its staff, there are and may be circumstances where we have worked with the owners or other parties associated with the energy conversion and transmission facility sites that require post-construction Inspection.

The staff of ProSource has in the past, and is now performing work on portions of some of the Enbridge projects listed on Attachment 6. Specifically on some of the listed Enbridge projects, ProSource performed title examinations, audited legal descriptions, purchased easement or fee land, acquired road-crossing permits and negotiated crop damage settlements with landowners and tenants. We do not anticipate any of our prior work to be a conflict of interest with the scope of work identified in the RFP.

If deemed necessary on Enbridge projects, we propose to use a project manager and other staff that are not in any way involved in the subject site or project.