

**STATE OF NORTH DAKOTA  
PUBLIC SERVICE COMMISSION**

**Enbridge Pipelines (North Dakota) LLC  
Berthold Station Upgrades  
Siting Application**

**Case No. PU-10-130**

**NOTICE OF FILING AND NOTICE OF HEARING**

**May 18, 2010**

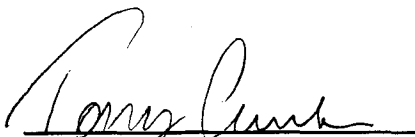
On May 7, 2010, Enbridge Pipelines (North Dakota) LLC (Enbridge) filed a combined application for a certificate of corridor compatibility and a route permit to authorize construction for the expansion and upgrade of its existing Berthold Station in Ward County, North Dakota, as shown on the attached map. The Commission finds the combined application is complete.

A **Public Hearing** on the combined application is scheduled to begin **July 16, 2010 at 10:00 a.m. CDT, at the Berthold School, 401 4<sup>th</sup> Ave NE, Berthold, North Dakota, 58718**. The issues to be considered are:

1. Will the location, construction, and operation of the proposed facilities produce minimal adverse effects on the environment and upon the welfare of the citizens of North Dakota?
2. Are the proposed facilities compatible with the environmental preservation and the efficient use of resources?
3. Will the proposed facility locations minimize adverse human and environmental impact while ensuring continuing system reliability and integrity and ensuring that energy needs are met and fulfilled in an orderly and timely fashion?

For more information contact the Public Service Commission, State Capitol, Bismarck, North Dakota 58505, 701-328-2400; or Relay North Dakota, 1-800-366-6888 TTY. If you require any auxiliary aids or services, such as readers, signers, or Braille materials, please notify the Commission at least 24 hours in advance.

**PUBLIC SERVICE COMMISSION**



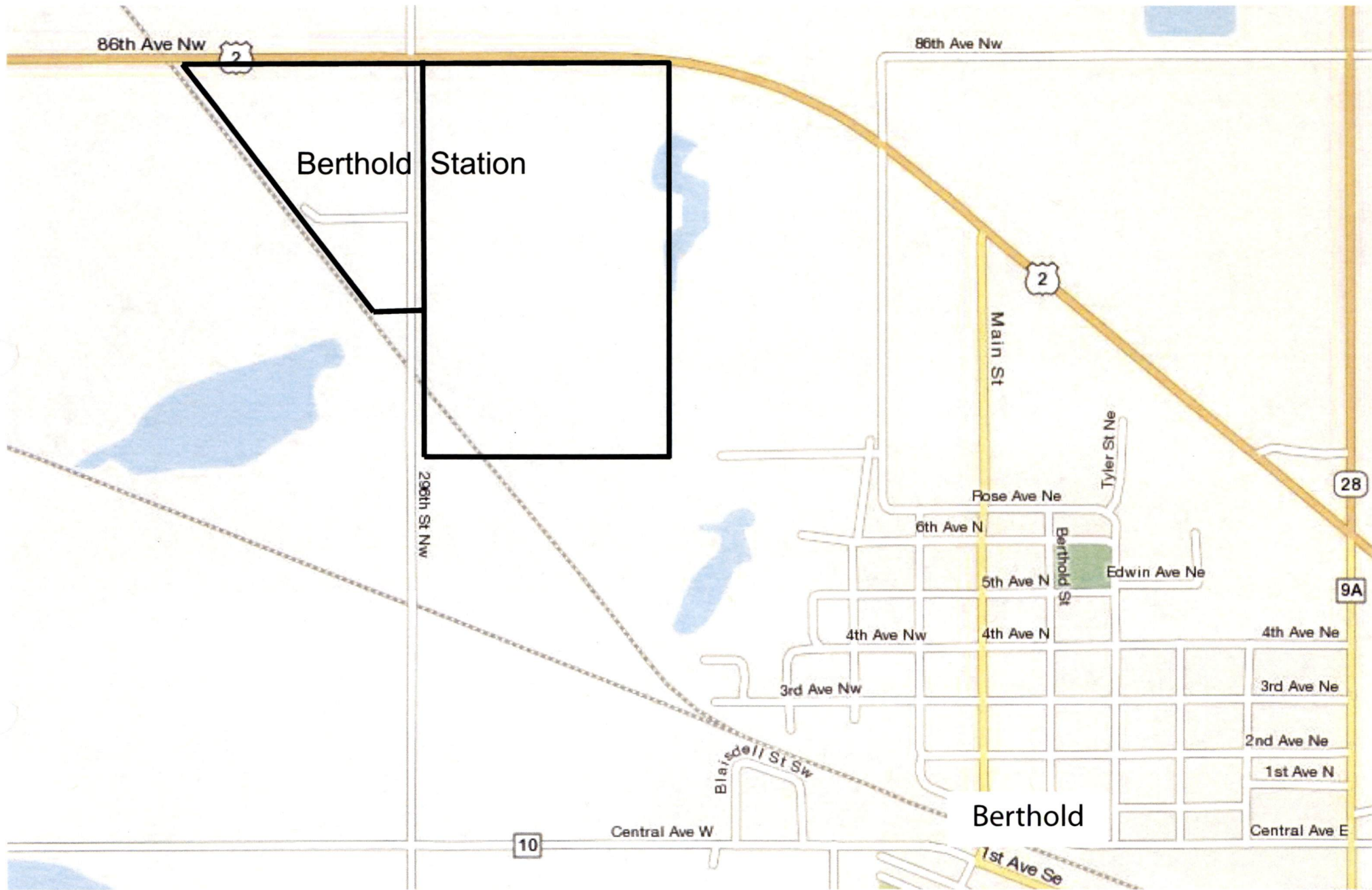
**Tony Clark  
Commissioner**



**Kevin Cramer  
Chairman**



**Brian P. Kalk  
Commissioner**



ENBRIDGE PIPELINES (NORTH DAKOTA) LLC - BERTHOLD STATION UPGRADE PROJECT

LOCATION: SECTIONS 20 & 21, TOWNSHIP 156N, RANGE 86W, WARD COUNTY, NORTH DAKOTA