

RECEPTOR-TO-TURBINE
DISTANCE (NORTH)

JULY 2010



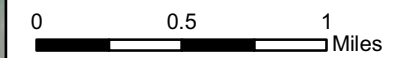
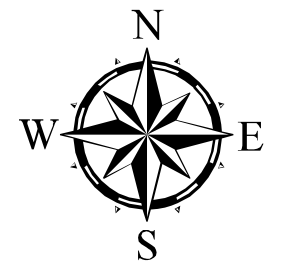
TETRA TECH EC, INC.

Legend

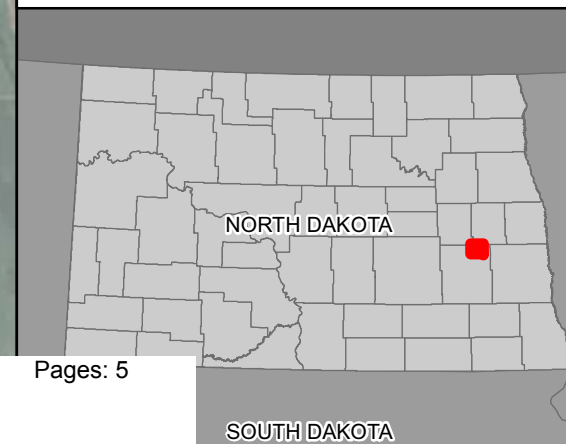
- Proposed Turbine Location
- Occupied
- Unoccupied / Non-Residential

Receptor

- Occupied
- Unoccupied / Non-Residential



REFERENCE MAP



NEXTERA ENERGY RESOURCES, LLC
ASHTABULA III WIND ENERGY CENTER
BARNES COUNTY, NORTH DAKOTA

RECEPTOR-TO-TURBINE
DISTANCE (SOUTH)

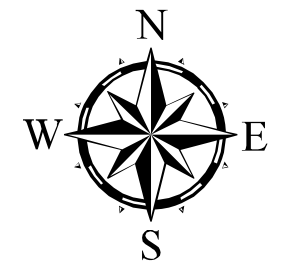
JULY 2010



TETRA TECH EC, INC.

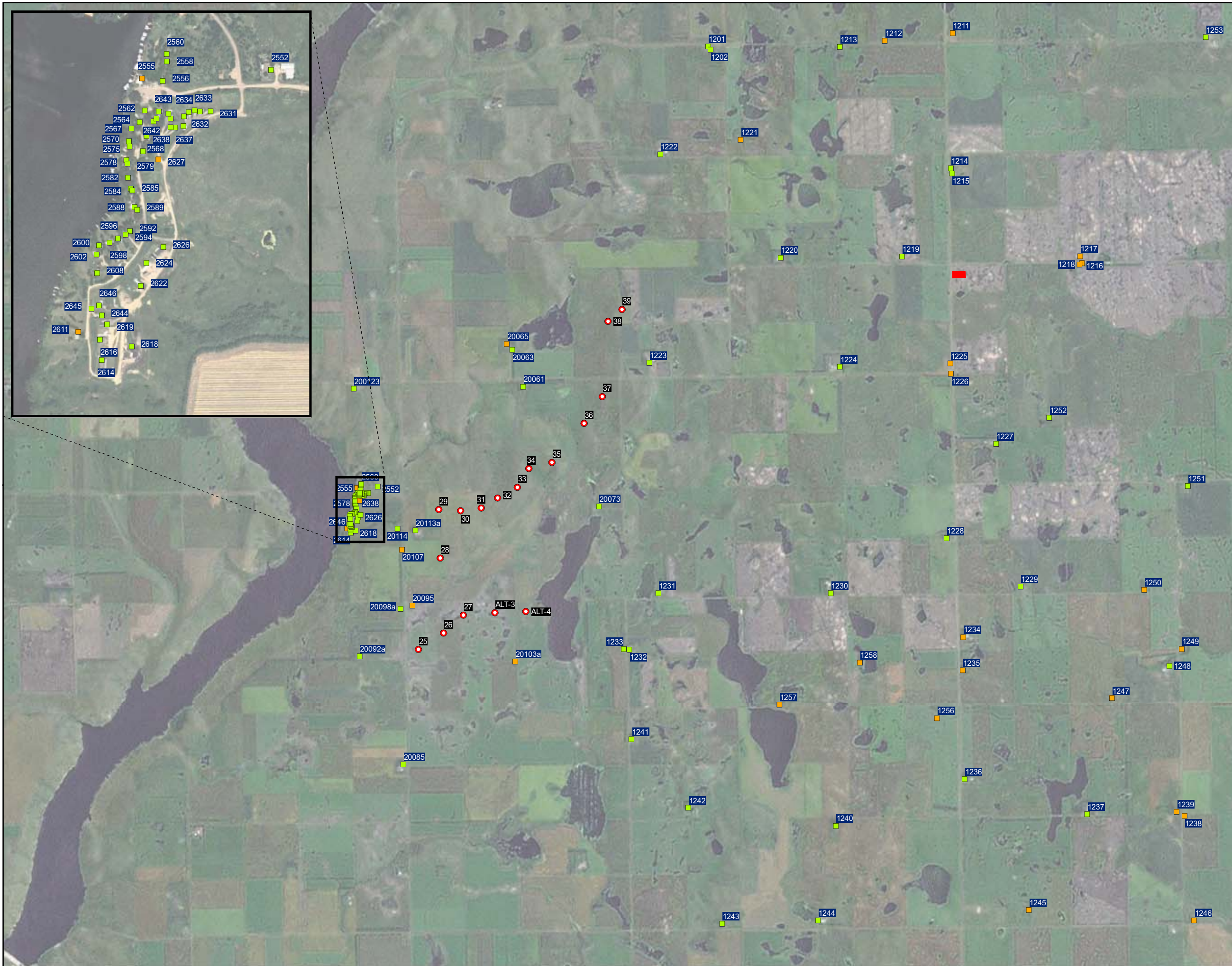
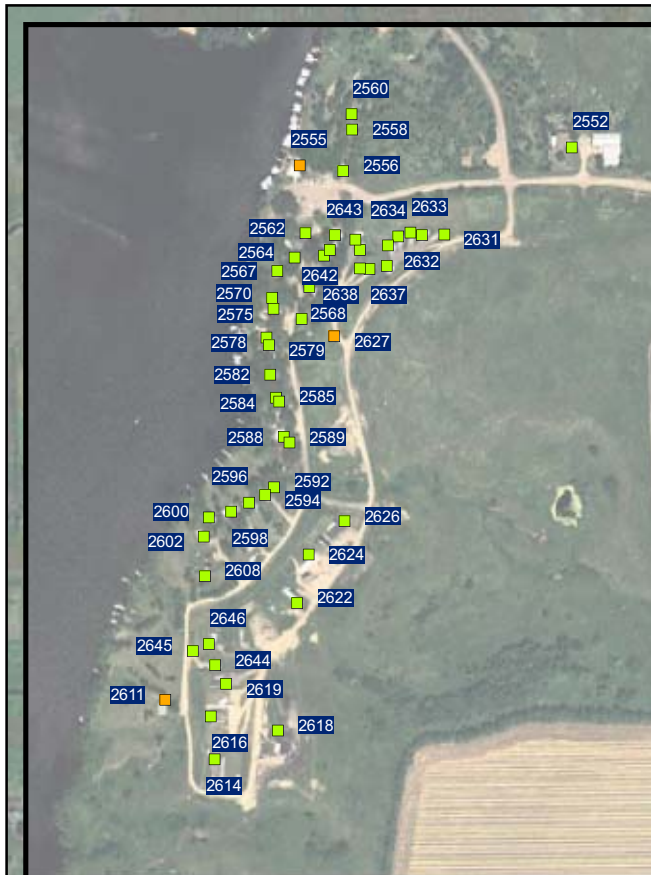
Legend

- Proposed Turbine Location
- Receptor
 - Occupied
 - Unoccupied / Non-Residential
- Proposed Substation Location



0 0.5 1 Miles

REFERENCE MAP



Receptor ID	Turbine ID	Distance (feet)	Receptor Status
1200	13	2,012	Non-Residential
1201	39	13,256	Occupied
1202	39	13,148	Occupied
1203	13	14,263	Occupied
1204	17	1,230	Unoccupied
1205	21	2,057	Occupied
1206	16	5,291	Unoccupied
1208	17	9,865	Occupied
1209	17	10,546	Unoccupied
1210	21	11,474	Unoccupied
1211	21	16,894	Unoccupied
1212	16	17,093	Unoccupied
1213	39	16,342	Occupied
1214	39	17,146	Occupied
1215	39	17,104	Occupied
1216	39	22,150	Unoccupied
1217	39	22,106	Non-Residential
1218	39	22,035	Unoccupied
1219	39	13,659	Occupied
1220	39	7,994	Occupied
1221	39	9,914	Non-Residential
1222	39	7,655	Occupied
1223	37	2,764	Occupied
1224	39	10,800	Occupied
1225	39	15,938	Non-Residential
1226	39	16,068	Unoccupied
1227	37	19,008	Occupied
1228	37	17,846	Occupied
1229	37	22,017	Occupied
1230	36	14,348	Occupied
1231	ALT-4	6,411	Occupied
1232	ALT-4	5,295	Occupied
1233	ALT-4	5,039	Occupied
1234	37	20,789	Unoccupied
1235	ALT-4	21,132	Non-Residential
1236	ALT-4	22,516	Occupied
1237	ALT-4	28,607	Occupied
1238	ALT-4	33,049	Non-Residential
1239	ALT-4	32,641	Non-Residential
1240	ALT-4	18,060	Occupied
1241	ALT-4	7,943	Occupied
1242	ALT-4	12,208	Occupied
1243	ALT-4	17,673	Occupied
1244	ALT-4	20,371	Occupied
1245	ALT-4	28,035	Unoccupied
1246	ALT-4	35,292	Unoccupied
1247	37	28,391	Unoccupied
1248	37	30,094	Occupied
1249	37	30,290	Unoccupied
1250	37	27,573	Unoccupied

Receptor ID	Turbine ID	Distance (feet)	Receptor Status
1251	37	28,386	Occupied
1252	39	21,126	Occupied
1253	21	19,081	Occupied
1254	21	12,068	Unoccupied
1255	24	12,710	Occupied
1256	ALT-4	20,354	Unoccupied
1257	ALT-4	12,955	Unoccupied
1258	ALT-4	16,202	Unoccupied
20015	12	3,183	Occupied
20004	24	1,606	Occupied
20017	ALT-2	2,305	Occupied
20025a	9	1,681	Unoccupied
20031a	9	1,465	Occupied
20033a	9	2,910	Unoccupied
20034	6	1,381	Unoccupied
20040	12	6,152	Occupied
20043	ALT-1	1,876	Occupied
20046	15	1,437	Occupied
20001	24	1,866	Unoccupied
2504	5	7,581	Occupied
2511	ALT-1	6,464	Unoccupied
2512	ALT-1	1,601	Occupied
2523	4	3,724	Occupied
2532a	3	1,828	Occupied
2541	ALT-1	1,871	Occupied
20061	36	3,415	Occupied
20065	38	4,972	Unoccupied
20063	38	4,793	Occupied
20073	35	3,085	Occupied
20085	25	5,557	Occupied
20092a	25	2,847	Occupied
20095	26	1,986	Unoccupied
20098a	25	2,117	Occupied
20103a	ALT-4	2,453	Unoccupied
20107	28	1,875	Non-Residential
20113a	29	1,499	Occupied
20114	29	2,175	Occupied
200123	29	7,072	Occupied
2552	29	3,113	Occupied
2555	29	4,034	Non-Residential
2556	29	3,877	Occupied
2558	29	3,887	Occupied
2560	29	3,907	Occupied
2562	29	3,957	Occupied
2564	29	3,981	Occupied
2567	29	4,034	Occupied
2568	29	3,910	Occupied
2570	29	4,037	Occupied
2572	29	3,923	Occupied
2575	29	4,029	Occupied

Receptor ID	Turbine ID	Distance (feet)	Receptor Status
2578	29	4,040	Occupied
2579	29	4,030	Occupied
2582	29	4,015	Occupied
2584	29	3,991	Occupied
2585	29	3,978	Occupied
2588	29	3,959	Occupied
2589	29	3,937	Occupied
2592	29	3,994	Occupied
2594	29	4,029	Occupied
2596	29	4,087	Occupied
2598	29	4,154	Occupied
2600	29	4,235	Occupied
2602	29	4,259	Occupied
2608	29	4,267	Occupied
2611	29	4,479	Non-Residential
2614	29	4,354	Occupied
2616	29	4,331	Occupied
2618	29	4,106	Occupied
2619	29	4,251	Occupied
2622	29	3,948	Occupied
2624	29	3,885	Occupied
2626	29	3,746	Occupied
2627	29	3,797	Non-Residential
2631	29	3,466	Occupied
2632	29	3,543	Occupied
2633	29	3,587	Occupied
2634	29	3,626	Occupied
2635	29	3,656	Occupied
2636	29	3,646	Occupied
2637	29	3,705	Occupied
2638	29	3,741	Occupied
2639	29	3,752	Occupied
2640	29	3,775	Occupied
2641	29	3,877	Occupied
2642	29	3,861	Occupied
2643	29	3,852	Occupied
2644	29	4,279	Occupied
2645	29	4,349	Occupied
2646	29	4,287	Occupied
730009	20	1,222	Non-Residential
730010	20	1,455	Non-Residential
2647	23	1,604	Unoccupied