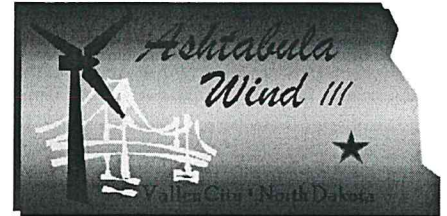




NEXTerTM Energy Resources Ashtabula Wind III

NEXTer Energy Plan of the Day (POD)



Date: Tuesday, 8-24-10
High: 73
Precipitation Chances: 5%

COD: 12-15-10
Low: 42

Days to COD: 114
Winds: WNW @ 23 mph
Weather Forecast: Partly Sunny

NEXTerTM Energy Resources Otter Tail Blattner Energy GE

Safety/Environmental:

- Site safety orientation will be held at 9 a.m. daily
- Obey traffic guidelines and speed limits

Civil/Erection:

- Subgrade at substation & 7-12
- Approach at 7-12

Foundations:

Collection:

Electrical:

Substation:

Upcoming Events/Outstanding Issues:

RECEIVED

AUG 24 2010

PUBLIC SERVICE COMMISSION

RECEIVING (As of COB yesterday)

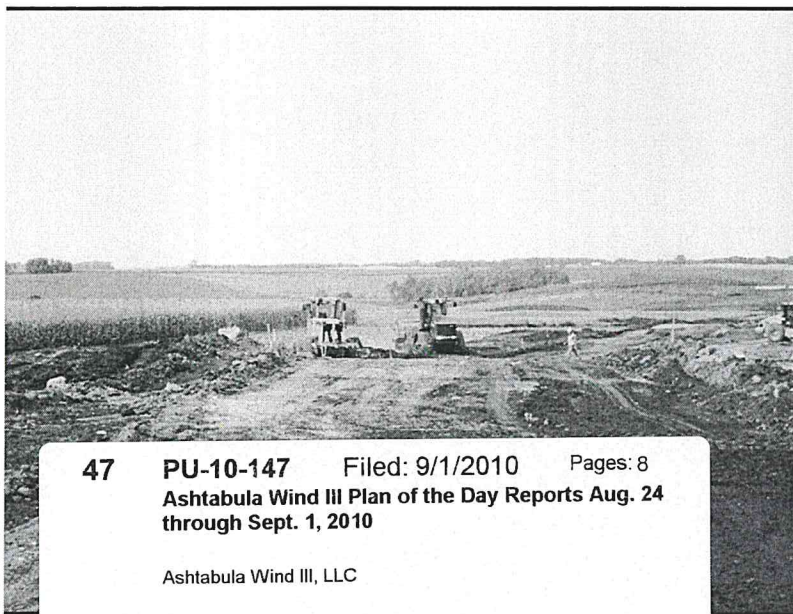
	Total	Received	Balance
PMT XFR	40	3	37
Grounding XFR	3	0	3
4/0 Cable	251,642	115,617	136,025
500 KCM	42,438	0	42,438
1000 KCM	265,584	67,633	197,951
12 Fiber SM FOC	211,602	15,000	196,602
XFR Box Pads	40	0	40
Controllers	39	39	0
Bases	39	39	0
Mids	39	39	0
Tops	39	39	0
Nacelles	39	39	0
Hubs	39	39	0
Blade Sets	39	39	0

Negative Number Indicates Overage of Cable

General Construction Status

	Complete	Total	% Complete
Roads Subgraded	4,060	68,421	5.9%
Roads Complete	0	68,421	0.0%
Silt Fence Installed	15,764	55,716	28.3%
Foundations Excavated	0	39	0.0%
Foundations Poured	0	39	0.0%
Foundations Backfilled	0	39	0.0%
Crane Pads Completed	0	39	0.0%
Tower Base Sections Erected	0	39	0.0%
Tower Mid Sections Erected	0	39	0.0%
Tower Top Sections Erected	0	39	0.0%
Nacelles Installed	0	39	0.0%
Rotors Installed	0	39	0.0%
Tower Wiring Complete	0	39	0.0%
Mechanically Complete	0	39	0.0%
Pre-Commissioned	0	39	0.0%
Final Commissioned	0	39	0.0%
4/0 Cable Trenched	0	251,642	0.0%
500 Cable Trenched	0	42,438	0.0%
1000 Cable Trenched	0	265,584	0.0%
1250 Cable Trenched	0	85,568	0.0%
Fiber Optic 12 Fiber SM	0	211,602	0.0%
Transformers Set/Terminated	0	39	0.0%

(as of COB yesterday)



47 PU-10-147 Filed: 9/1/2010 Pages: 8
Ashtabula Wind III Plan of the Day Reports Aug. 24 through Sept. 1, 2010

Ashtabula Wind III, LLC



NEXtera™ Energy Resources Ashtabula Wind III

NEXtera Energy Plan of the Day (POD)



Date: Wednesday, 8-25-10
High: 74
Precipitation Chances: 0%

COD: 12-15-10
Low: 44

Days to COD: 113
Winds: SSW @ 6 mph
Weather Forecast: Sunny

NEXtera™ Energy Resources Otter Tail Blattner Energy GE

Safety/Environmental:

- Site safety orientation will be held at 9 a.m. daily
- Be cautious of traffic on narrow county roads
- Be aware of power lines when moving equipment to string roads

Civil/Erection:

- Subgrade at substation, 7-12 & 23-24
- Approach at 7-12

Foundations:

Collection:

Electrical:

Substation:

Upcoming Events/Outstanding Issues:

RECEIVED

AUG 25 2010

PUBLIC SERVICE COMMISSION

RECEIVING (As of COB yesterday)			
	Total	Received	Balance
PMT XFR	40	6	34
Grounding XFR	3	0	3
4/0 Cable	251,642	115,617	136,025
500 KCM	42,438	0	42,438
1000 KCM	265,584	67,633	197,951
12 Fiber SM FOC	211,602	15,000	196,602
XFR Box Pads	40	0	40
Controllers	39	39	0
Bases	39	39	0
Mids	39	39	0
Tops	39	39	0
Nacelles	39	39	0
Hubs	39	39	0
Blade Sets	39	39	0

Negative Number Indicates Overage of Cable

General Construction Status

	Complete	Total	% Complete
Roads Subgraded	4,960	68,421	7.2%
Roads Complete	0	68,421	0.0%
Silt Fence Installed	15,764	55,716	28.3%
Foundations Excavated	0	39	0.0%
Foundations Poured	0	39	0.0%
Foundations Backfilled	0	39	0.0%
Crane Pads Completed	0	39	0.0%
Tower Base Sections Erected	0	39	0.0%
Tower Mid Sections Erected	0	39	0.0%
Tower Top Sections Erected	0	39	0.0%
Nacelles Installed	0	39	0.0%
Rotors Installed	0	39	0.0%
Tower Wiring Complete	0	39	0.0%
Mechanically Complete	0	39	0.0%
Pre-Commissioned	0	39	0.0%
Final Commissioned	0	39	0.0%
4/0 Cable Trenched	0	251,642	0.0%
500 Cable Trenched	0	42,438	0.0%
1000 Cable Trenched	0	265,584	0.0%
1250 Cable Trenched	0	85,568	0.0%
Fiber Optic 12 Fiber SM	0	211,602	0.0%
Transformers Set/Terminated	0	39	0.0%
(as of COB yesterday)			





NEXtera™ Energy Resources Ashtabula Wind III

NEXtera Energy

Plan of the Day (POD)



Date: Thursday, 8-26-10
High: 84
Precipitation Chances: 0%

COD: 12-15-10
Low: 56

Days to COD: 112
Winds: SSE @ 13 mph
Weather Forecast: Sunny

NEXtera™ Energy Resources Otter Tail Blattner Energy GE

Safety/Environmental:

- Site safety orientation will be held at 9 a.m. daily
- Be cautious of traffic on narrow county roads
- Be aware of power lines when moving equipment to string roads
- Wear proper PPE

Civil/Erection:

- Subgrade at substation, 11-12 & 15-22
- Approach at 13-20

Foundations:

Collection:

Electrical:

Substation:

Upcoming Events/Outstanding Issues:

RECEIVED

AUG 26 2010

PUBLIC SERVICE COMMISSION

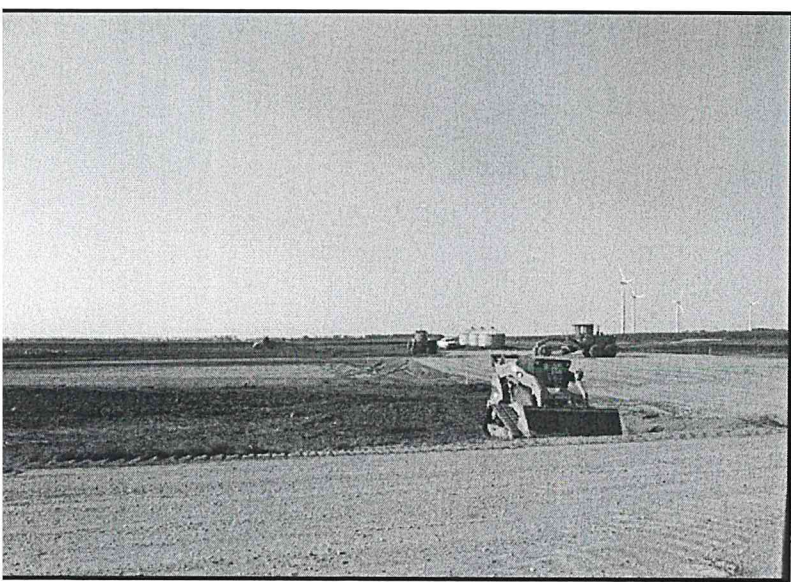
RECEIVING (As of COB yesterday)			
	Total	Received	Balance
PMT XFR	40	9	31
Grounding XFR	3	0	3
4/0 Cable	251,642	115,617	136,025
500 KCM	42,438	0	42,438
1000 KCM	265,584	67,633	197,951
12 Fiber SM FOC	211,602	15,000	196,602
XFR Box Pads	40	0	40
Controllers	39	39	0
Bases	39	39	0
Mids	39	39	0
Tops	39	39	0
Nacelles	39	39	0
Hubs	39	39	0
Blade Sets	39	39	0

Negative Number Indicates Overage of Cable

General Construction Status

	Complete	Total	% Complete
Roads Subgraded	8,656	68,421	12.7%
Roads Complete	0	68,421	0.0%
Silt Fence Installed	15,764	55,716	28.3%
Foundations Excavated	0	39	0.0%
Foundations Poured	0	39	0.0%
Foundations Backfilled	0	39	0.0%
Crane Pads Completed	0	39	0.0%
Tower Base Sections Erected	0	39	0.0%
Tower Mid Sections Erected	0	39	0.0%
Tower Top Sections Erected	0	39	0.0%
Nacelles Installed	0	39	0.0%
Rotors Installed	0	39	0.0%
Tower Wiring Complete	0	39	0.0%
Mechanically Complete	0	39	0.0%
Pre-Commissioned	0	39	0.0%
Final Commissioned	0	39	0.0%
4/0 Cable Trenched	0	251,642	0.0%
500 Cable Trenched	0	42,438	0.0%
1000 Cable Trenched	0	265,584	0.0%
1250 Cable Trenched	0	85,568	0.0%
Fiber Optic 12 Fiber SM	0	211,602	0.0%
Transformers Set/Terminated	0	39	0.0%

(as of COB yesterday)





NEXtera™ Energy Resources Ashtabula Wind III



NEXtera Energy

Plan of the Day (POD)

Date: Friday, 8-27-10
High: 91
Precipitation Chances: 0%

COD: 12-15-10
Low: 53

Days to COD: 111
Winds: S @ 19 mph
Weather Forecast: Sunny

NEXtera™ Energy Resources Otter Tail Blattner Energy GE

Safety/Environmental:

- SWPPP Inspection today
- Site safety orientation will be held at 9 a.m. daily
- Be cautious of traffic on narrow county roads
- Be aware of power lines when moving equipment to string roads
- Wear proper PPE

Civil/Erection:

- Subgrade at substation, 259-264
- Approach at 259-264

Foundations:

Collection:

Electrical:

Substation:

Upcoming Events/Outstanding Issues:

RECEIVING (As of COB yesterday)			
	Total	Received	Balance
PMT XFR	40	9	31
Grounding XFR	3	0	3
4/0 Cable	251,642	115,617	136,025
500 KCM	42,438	0	42,438
1000 KCM	265,584	67,633	197,951
12 Fiber SM FOC	211,602	15,000	196,602
XFR Box Pads	40	0	40
Controllers	39	39	0
Bases	39	39	0
Mids	39	39	0
Tops	39	39	0
Nacelles	39	39	0
Hubs	39	39	0
Blade Sets	39	39	0

Negative Number Indicates Overage of Cable

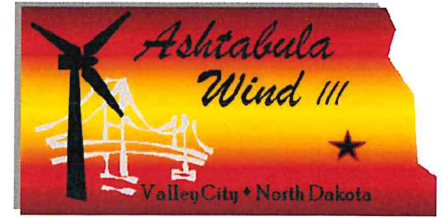
General Construction Status

	Complete	Total	% Complete
Roads Subgraded	11,656	68,421	17.0%
Roads Complete	0	68,421	0.0%
Silt Fence Installed	15,764	55,716	28.3%
Foundations Excavated	0	39	0.0%
Foundations Poured	0	39	0.0%
Foundations Backfilled	0	39	0.0%
Crane Pads Completed	0	39	0.0%
Tower Base Sections Erected	0	39	0.0%
Tower Mid Sections Erected	0	39	0.0%
Tower Top Sections Erected	0	39	0.0%
Nacelles Installed	0	39	0.0%
Rotors Installed	0	39	0.0%
Tower Wiring Complete	0	39	0.0%
Mechanically Complete	0	39	0.0%
Pre-Commissioned	0	39	0.0%
Final Commissioned	0	39	0.0%
4/0 Cable Trenched	0	251,642	0.0%
500 Cable Trenched	0	42,438	0.0%
1000 Cable Trenched	0	265,584	0.0%
1250 Cable Trenched	0	85,568	0.0%
Fiber Optic 12 Fiber SM	0	211,602	0.0%
Transformers Set/Terminated	0	39	0.0%
(as of COB yesterday)			





NEXtera™ Energy Resources Ashtabula Wind III



NEXtera Energy Plan of the Day (POD)

Date: Saturday, 8-28-10
High: 82
Precipitation Chances: 25%

COD: 12-15-10
Low: 57

Days to COD: 110
Winds: ESE @ 11 mph
Weather Forecast: Partly Sunny

NEXtera™ Energy Resources Otter Tail Blattner Energy GE

Safety/Environmental:

- Site safety orientation will be held at 9 a.m. daily
- Be cautious of traffic on narrow county roads
- Be aware of power lines when moving equipment to string roads
- Wear proper PPE

Civil/Erection:

- Subgrade at laydown yard, 259-264
- Approach at 259-264

Foundations:

Collection:

Electrical:

Substation:

Upcoming Events/Outstanding Issues:

RECEIVING (As of COB yesterday)			
	Total	Received	Balance
PMT XFR	40	12	28
Grounding XFR	3	0	3
4/0 Cable	251,642	115,617	136,025
500 KCM	42,438	0	42,438
1000 KCM	265,584	67,633	197,951
12 Fiber SM FOC	211,602	15,000	196,602
XFR Box Pads	40	0	40
Controllers	39	39	0
Bases	39	39	0
Mids	39	39	0
Tops	39	39	0
Nacelles	39	39	0
Hubs	39	39	0
Blade Sets	39	39	0

Negative Number Indicates Overage of Cable

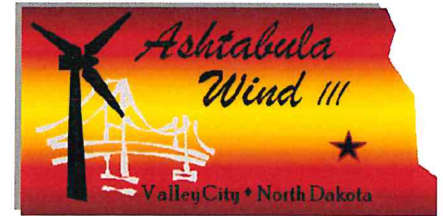
General Construction Status

	Complete	Total	% Complete
Roads Subgraded	13,856	68,421	20.3%
Roads Complete	0	68,421	0.0%
Silt Fence Installed	19,706	55,716	35.4%
Foundations Excavated	0	39	0.0%
Foundations Poured	0	39	0.0%
Foundations Backfilled	0	39	0.0%
Crane Pads Completed	0	39	0.0%
Tower Base Sections Erected	0	39	0.0%
Tower Mid Sections Erected	0	39	0.0%
Tower Top Sections Erected	0	39	0.0%
Nacelles Installed	0	39	0.0%
Rotors Installed	0	39	0.0%
Tower Wiring Complete	0	39	0.0%
Mechanically Complete	0	39	0.0%
Pre-Commissioned	0	39	0.0%
Final Commissioned	0	39	0.0%
4/0 Cable Trenched	0	251,642	0.0%
500 Cable Trenched	0	42,438	0.0%
1000 Cable Trenched	0	265,584	0.0%
1250 Cable Trenched	0	85,568	0.0%
Fiber Optic 12 Fiber SM	0	211,602	0.0%
Transformers Set/Terminated	0	39	0.0%
(as of COB yesterday)			





NEXtera™ Energy Resources Ashtabula Wind III



NEXtera Energy Plan of the Day (POD)

Date: Monday, 8-30-10
High: 84
Precipitation Chances: 60%

COD: 12-15-10
Low: 57

Days to COD: 108
Winds: NNE @ 14 mph
Weather Forecast: Mostly Cloudy

NEXtera™ Energy Resources Otter Tail Blattner Energy GE

Safety/Environmental:

- Site safety orientation will be held at 9 a.m. daily
- Be cautious of traffic on narrow county roads
- Be aware of power lines when moving equipment to string roads
- Wear proper PPE

Civil/Erection:

- Subgrade at laydown yard, 259-261

Foundations:

Collection:

Electrical:

Substation:

Upcoming Events/Outstanding Issues:

RECEIVING (As of COB yesterday)			
	Total	Received	Balance
PMT XFR	40	12	28
Grounding XFR	3	0	3
4/0 Cable	251,642	115,617	136,025
500 KCM	42,438	0	42,438
1000 KCM	265,584	67,633	197,951
12 Fiber SM FOC	211,602	15,000	196,602
XFR Box Pads	40	0	40
Controllers	39	39	0
Bases	39	39	0
Mids	39	39	0
Tops	39	39	0
Nacelles	39	39	0
Hubs	39	39	0
Blade Sets	39	39	0

Negative Number Indicates Overage of Cable

General Construction Status

	Complete	Total	% Complete
Roads Subgraded	14,856	68,421	21.7%
Roads Complete	0	68,421	0.0%
Silt Fence Installed	19,706	55,716	35.4%
Foundations Excavated	0	39	0.0%
Foundations Poured	0	39	0.0%
Foundations Backfilled	0	39	0.0%
Crane Pads Completed	0	39	0.0%
Tower Base Sections Erected	0	39	0.0%
Tower Mid Sections Erected	0	39	0.0%
Tower Top Sections Erected	0	39	0.0%
Nacelles Installed	0	39	0.0%
Rotors Installed	0	39	0.0%
Tower Wiring Complete	0	39	0.0%
Mechanically Complete	0	39	0.0%
Pre-Commissioned	0	39	0.0%
Final Commissioned	0	39	0.0%
4/0 Cable Trenched	0	251,642	0.0%
500 Cable Trenched	0	42,438	0.0%
1000 Cable Trenched	0	265,584	0.0%
1250 Cable Trenched	0	85,568	0.0%
Fiber Optic 12 Fiber SM	0	211,602	0.0%
Transformers Set/Terminated	0	39	0.0%
(as of COB yesterday)			

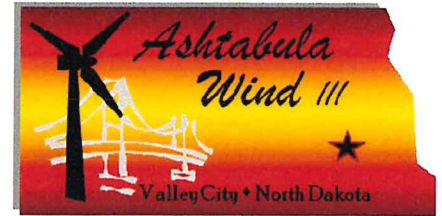




NEXTerTM Energy Resources Ashtabula Wind III

NEXTer Energy

Plan of the Day (POD)



Date: Tuesday, 8-31-10
High: 76
Precipitation Chances: 20%

COD: 12-15-10
Low: 47

Days to COD: 107
Winds: WNW @ 16 mph
Weather Forecast: Partly Sunny

NEXTerTM Energy Resources Otter Tail Blattner Energy GE

Safety/Environmental:

- Be aware of heavy traffic in the North portion of project
- Be cautious of traffic on narrow county roads
- Be aware of power lines when moving equipment to string roads
- Wear proper PPE

Civil/Erection:

- Subgrade at laydown yard, 259-261
- Gravel at 248-250
- Approach at 262

Foundations:

- Foundation excavation at 250
- Pour mud mat at 250

Collection:

Electrical:

Substation:

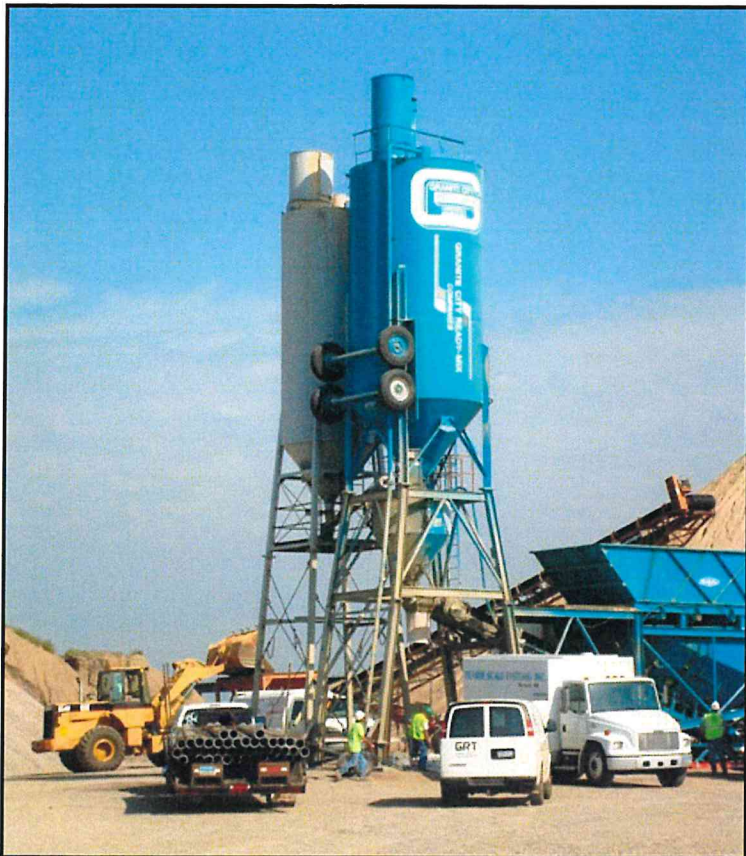
RECEIVING (As of COB yesterday)			
	Total	Received	Balance
PMT XFR	40	12	28
Grounding XFR	3	0	3
4/0 Cable	251,642	115,617	136,025
500 KCM	42,438	0	42,438
1000 KCM	265,584	67,633	197,951
12 Fiber SM FOC	211,602	129,027	82,575
XFR Box Pads	40	0	40
Controllers	39	39	0
Bases	39	39	0
Mids	39	39	0
Tops	39	39	0
Nacelles	39	39	0
Hubs	39	39	0
Blade Sets	39	39	0

Negative Number Indicates Overage of Cable

General Construction Status

	Complete	Total	% Complete
Roads Subgraded	14,856	68,421	21.7%
Roads Complete	0	68,421	0.0%
Silt Fence Installed	19,706	55,716	35.4%
Foundations Excavated	0	39	0.0%
Foundations Poured	0	39	0.0%
Foundations Backfilled	0	39	0.0%
Crane Pads Completed	0	39	0.0%
Tower Base Sections Erected	0	39	0.0%
Tower Mid Sections Erected	0	39	0.0%
Tower Top Sections Erected	0	39	0.0%
Nacelles Installed	0	39	0.0%
Rotors Installed	0	39	0.0%
Tower Wiring Complete	0	39	0.0%
Mechanically Complete	0	39	0.0%
Pre-Commissioned	0	39	0.0%
Final Commissioned	0	39	0.0%
4/0 Cable Trenched	0	251,642	0.0%
500 Cable Trenched	0	42,438	0.0%
1000 Cable Trenched	0	265,584	0.0%
1250 Cable Trenched	0	85,568	0.0%
Fiber Optic 12 Fiber SM	0	211,602	0.0%
Transformers Set/Terminated	0	39	0.0%

(as of COB yesterday)





NEXTerTM Energy Resources Ashtabula Wind III



NEXTerTM Energy Plan of the Day (POD)

Date: **Wednesday, 9-1-10**
High: **72**
Precipitation Chances: **50%**

COD: **12-15-10**
Low: **54**

Days to COD: **106**
Winds: **S @ 13 mph**
Weather Forecast: **Cloudy**

NEXTerTM Energy Resources Otter Tail Blattner Energy GE

Safety/Environmental:

- Be aware of heavy traffic in the North portion of project
- Be cautious of traffic on narrow county roads
- Be aware of power lines when moving equipment to string roads
- Wear proper PPE

Civil/Erection:

- Subgrade at laydown yard, 257-261
- Gravel at 245-247 & 251-253

Foundations:

- Foundation excavation at 248-249
- Pour mud mat at 248-249

Collection:

Electrical:

Substation:

RECEIVING (As of COB yesterday)			
	Total	Received	Balance
PMT XFR	40	12	28
Grounding XFR	3	0	3
4/0 Cable	251,642	115,617	136,025
500 KCM	42,438	0	42,438
1000 KCM	265,584	67,633	197,951
12 Fiber SM FOC	211,602	129,027	82,575
XFR Box Pads	40	5	35
Controllers	39	39	0
Bases	39	39	0
Mids	39	39	0
Tops	39	39	0
Nacelles	39	39	0
Hubs	39	39	0
Blade Sets	39	39	0

Negative Number Indicates Overage of Cable

General Construction Status

	Complete	Total	% Complete
Roads Subgraded	15,856	68,421	23.2%
Roads Complete	0	68,421	0.0%
Silt Fence Installed	19,706	55,716	35.4%
Foundations Excavated	1	39	2.6%
Foundations Poured	0	39	0.0%
Foundations Backfilled	0	39	0.0%
Crane Pads Completed	0	39	0.0%
Tower Base Sections Erected	0	39	0.0%
Tower Mid Sections Erected	0	39	0.0%
Tower Top Sections Erected	0	39	0.0%
Nacelles Installed	0	39	0.0%
Rotors Installed	0	39	0.0%
Tower Wiring Complete	0	39	0.0%
Mechanically Complete	0	80	0.0%
Mechanically Complete	0	39	0.0%
Pre-Commissioned	0	39	0.0%
Final Commissioned	0	39	0.0%
4/0 Cable Trenched	0	251,642	0.0%
500 Cable Trenched	0	42,438	0.0%
1000 Cable Trenched	0	265,584	0.0%
1250 Cable Trenched	0	85,568	0.0%
Fiber Optic 12 Fiber SM	0	211,602	0.0%
Transformers Set/Terminated	0	39	0.0%
(as of COB yesterday)			

