



NEXTerTM Energy
Plan of the Day (POD)

Date: **Wednesday, 10-20-10**
 High: **63**
 Precipitation Chances: **0 %**

COD: **12-15-10**
 Low: **30**

Days to COD: **57**
 Winds: **NW @ 17 mph**
 Weather Forecast: **Partly Sunny**

NEXTerTM Energy Resources Otter Tail Blattner Energy GE

Safety/Environmental:

- Make a pre-trip to look for power lines before moving cranes
- Dress appropriately for the weather

Civil/Erection:

- Erect base at 246
- Erect mid at 246
- Assemble rotor at 246
- Erect top at 248
- Erect nacelle & rotor at 248-249

Foundations:

- Backfill at 271-272
- Build crane pad at 276-277

Collection:

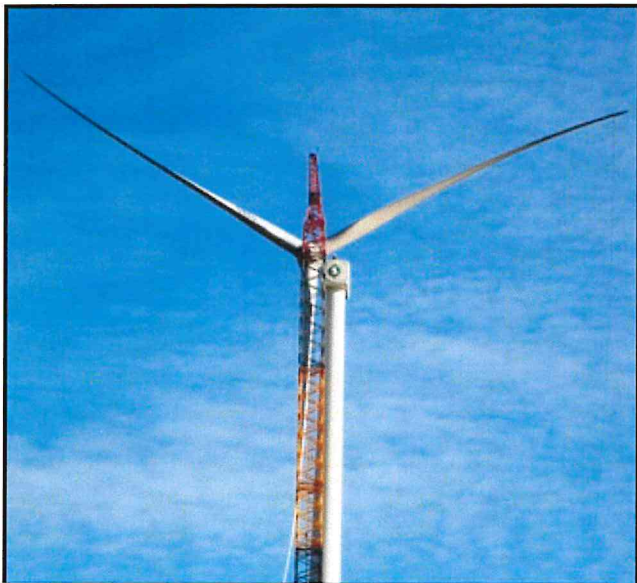
- Trench and install 4/0 from bore 30 to 280
- Cable splicing at SP1202
- Cable termination LV at 254-256 & HV at 252-255
- Boring at 36B
- Fiber termination at 245-246, 248, 253 & 268

Electrical:

- Controller termination at 254-256
- Install box pads at 273-274

Substation:

- Installing substation steel



RECEIVING (As of COB yesterday)			
	Total	Received	Balance
PMT XFR	40	40	0
Grounding XFR	3	3	0
4/0 Cable	251,642	268,753	-17,111
500 KCM	42,438	46,661	-4,223
1000 KCM	265,584	234,933	30,651
1250 KCMIL	85,586	90,696	-5,110
12 Fiber SM FOC	211,602	228,504	-16,902
XFR Box Pads	40	40	0
Controllers	39	39	0
Bases	39	39	0
Mids	39	39	0
Tops	39	39	0
Nacelles	39	39	0
Hubs	39	39	0
Blade Sets	39	39	0

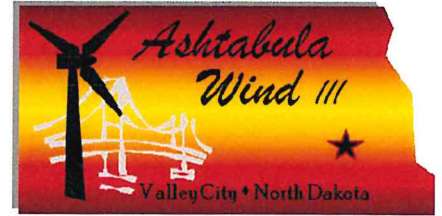
Negative Number Indicates Overage of Cable

General Construction Status			
	Complete	Total	% Complete
Roads Subgraded	44,274	44,274	100.0%
Roads Complete	44,274	44,274	100.0%
Silt Fence Installed	19,851	55,716	35.6%
Foundations Excavated	39	39	100.0%
Foundations Poured	39	39	100.0%
Foundations Backfilled	35	39	89.7%
Crane Pads Completed	30	39	76.9%
Tower Base Sections Erected	4	39	10.3%
Tower Mid Sections Erected	4	39	10.3%
Tower Top Sections Erected	2	39	5.1%
Nacelles Installed	1	39	2.6%
Rotors Installed	1	39	2.6%
Tower Wiring Complete	0	39	0.0%
Mechanically Complete	0	80	0.0%
Mechanically Complete	0	39	0.0%
Pre-Commissioned	0	39	0.0%
Final Commissioned	0	39	0.0%
4/0 Cable Trenched	154,917	251,642	61.6%
500 Cable Trenched	4,062	42,438	9.6%
1000 Cable Trenched	236,514	265,584	89.1%
1250 Cable Trenched	38,382	85,568	44.9%
Fiber Optic 12 Fiber SM	126,644	211,602	59.9%
Transformers Set	24	39	61.5%
(as of COB yesterday)			



NEXtera™ Energy Resources Ashtabula Wind III

NEXtera Energy Plan of the Day (POD)



Date: Tuesday, 10-19-10
High: 64
Precipitation Chances: 0 %

COD: 12-15-10
Low: 34

Days to COD: 58
Winds: W @ 13 mph
Weather Forecast: Partly Sunny

NEXtera™ Energy Resources Otter Tail Blattner Energy GE

Safety/Environmental:

- Stay focused on the task at hand
- Dress appropriately for the weather

Civil/Erection:

- Erect base at 246
- Erect mid at 246
- Assemble rotor at 246
- Erect top & nacelle at 249
- Erect rotor at 249-250

Foundations:

- Backfill at 273-274
- Build crane pad at 278-279

Collection:

- Trench and install 4/0 at 282-283
- Trench and install 1250 at JB 101 West
- Cable splicing at SP1102 & SP1202
- Low voltage cable termination at 252-253 & 268
- Boring at 36A

Electrical:

- Install box pads at 275-278

Substation:

- Installing substation steel



RECEIVING (As of COB yesterday)			
	Total	Received	Balance
PMT XFR	40	40	0
Grounding XFR	3	3	0
4/0 Cable	251,642	268,753	-17,111
500 KCM	42,438	46,661	-4,223
1000 KCM	265,584	234,933	30,651
1250 KCMIL	85,586	90,696	-5,110
12 Fiber SM FOC	211,602	228,504	-16,902
XFR Box Pads	40	40	0
Controllers	39	39	0
Bases	39	39	0
Mids	39	39	0
Tops	39	39	0
Nacelles	39	39	0
Hubs	39	39	0
Blade Sets	39	39	0

Negative Number Indicates Overage of Cable

General Construction Status			
	Complete	Total	% Complete
Roads Subgraded	44,274	44,274	100.0%
Roads Complete	44,274	44,274	100.0%
Silt Fence Installed	19,851	55,716	35.6%
Foundations Excavated	39	39	100.0%
Foundations Poured	39	39	100.0%
Foundations Backfilled	33	39	84.6%
Crane Pads Completed	28	39	71.8%
Tower Base Sections Erected	4	39	10.3%
Tower Mid Sections Erected	4	39	10.3%
Tower Top Sections Erected	1	39	2.6%
Nacelles Installed	1	39	2.6%
Rotors Installed	0	39	0.0%
Tower Wiring Complete	0	39	0.0%
Mechanically Complete	0	80	0.0%
Mechanically Complete	0	39	0.0%
Pre-Commissioned	0	39	0.0%
Final Commissioned	0	39	0.0%
4/0 Cable Trenched	151,563	251,642	60.2%
500 Cable Trenched	4,062	42,438	9.6%
1000 Cable Trenched	236,514	265,584	89.1%
1250 Cable Trenched	31,356	85,568	36.6%
Fiber Optic 12 Fiber SM	126,644	211,602	59.9%
Transformers Set	24	39	61.5%

(as of COB yesterday)