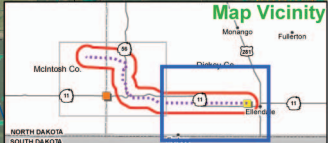
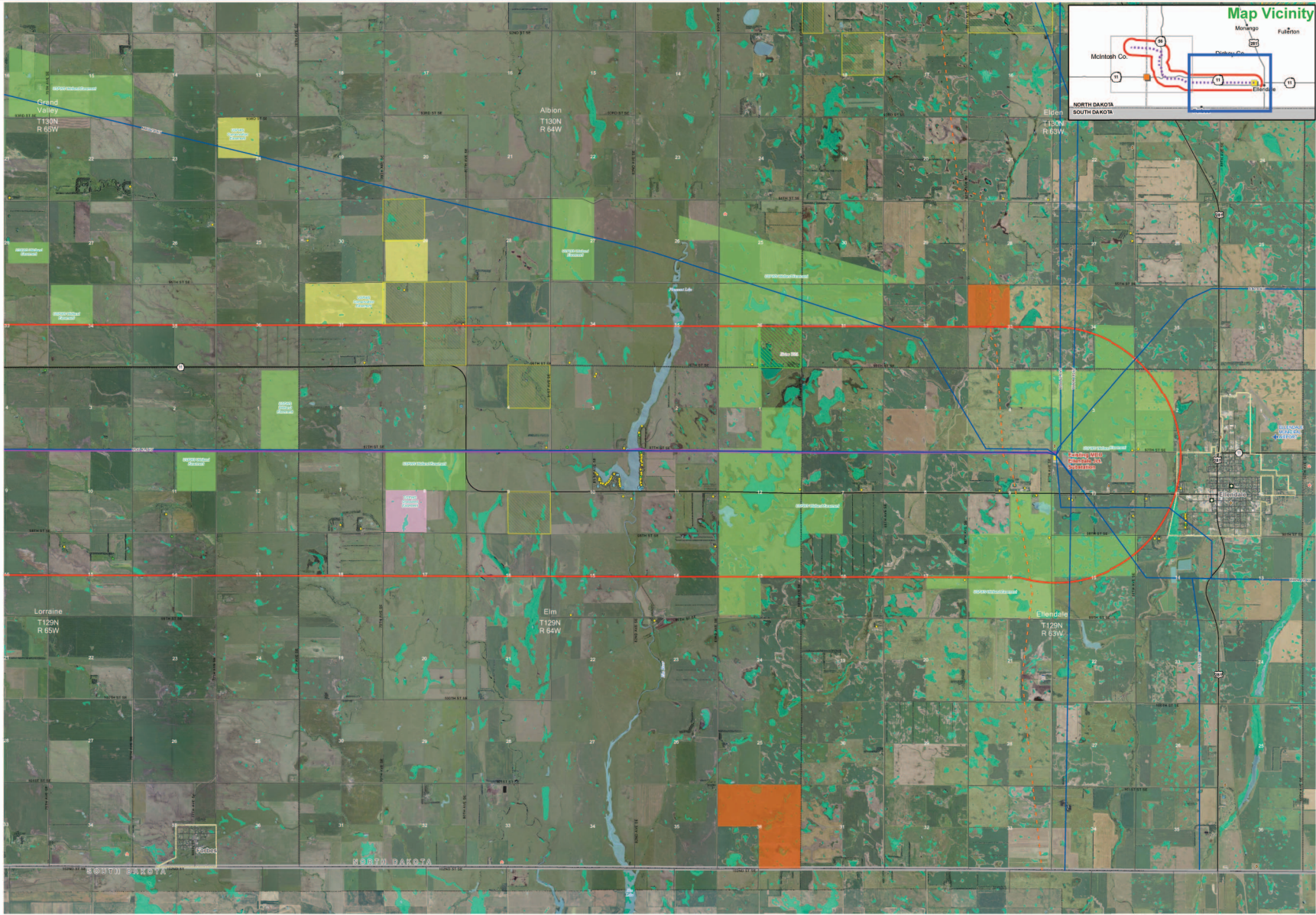


Project Location Map



MONTANA-DAKOTA
UTILITIES CO.
 A Division of MDU Resources Group, Inc.
In the Community to Serve

1:24,000
 March 2011

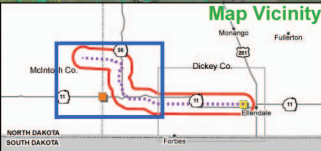
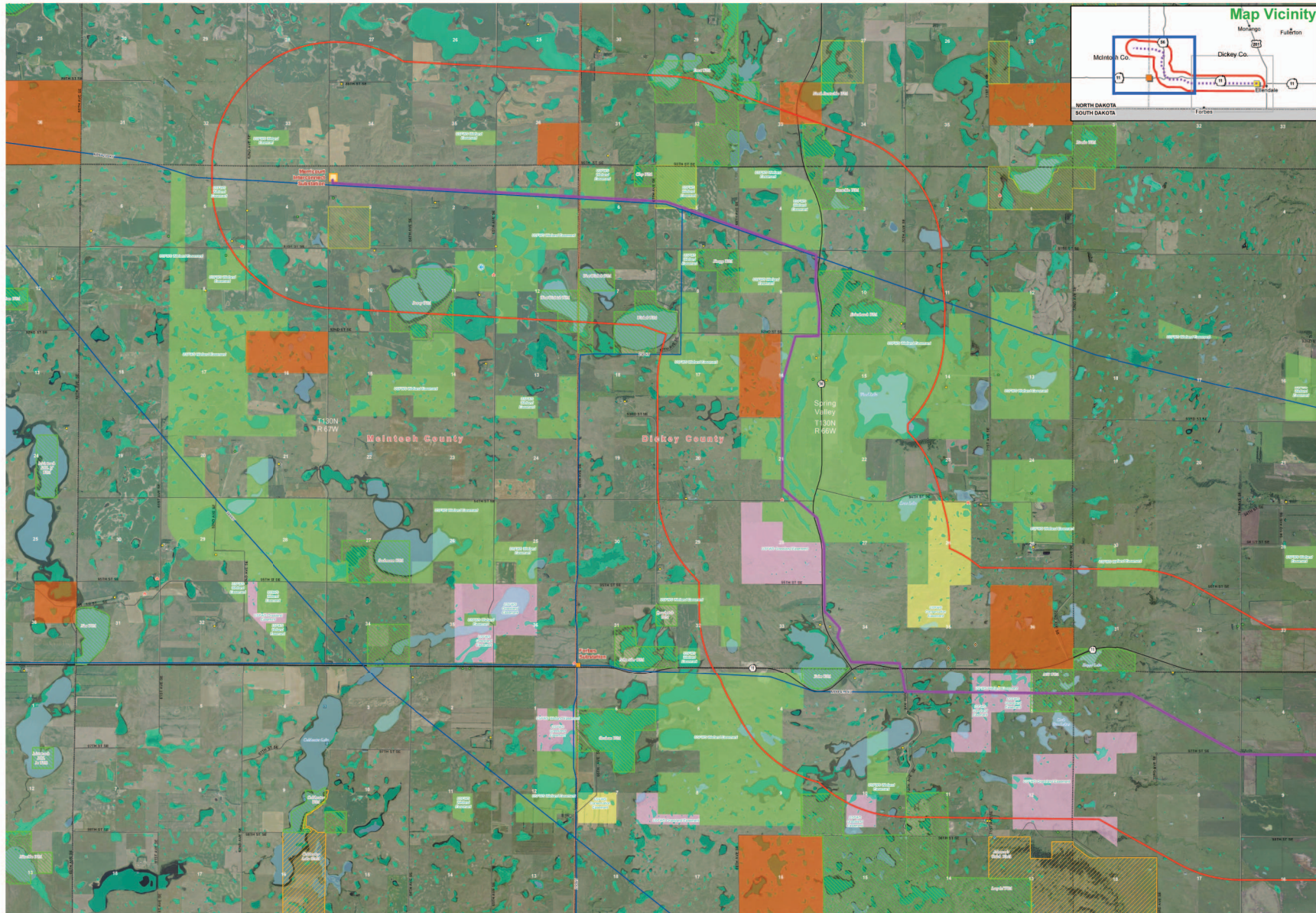
- Noncontiguous Interconnected Substation
 - Right-of-Way (120 ft)
 - Road Center (3 miles)
 - Existing MDU Ellendale Jet Substation
- Dwelling Occupied
 - Dwelling Vacant
 - Church and/or Cemetery
 - Recreation
 - Historic Sites (NHP)
- Existing Transmission Line
 - Existing Gas Pipeline
 - Communication Tower
 - Public Airport
 - Private Airport
- USFWS WPA
 - State WMA
 - FLOTS Land
 - State Surface Tracts
- Stream
 - Lake or Pond
 - Wetland
- USFWS Conservation Easement
 - USFWS Grazed Easement
 - USFWS Wetland Easement
- Highway
 - Incorporated Area
 - FLSB Township Boundary
 - County Boundary
 - State Boundary

Exhibit 11
Sheet A2
Merricourt Wind Farm to Ellendale Project
 McIntosh and Dickey Counties

64 PU-10-164 Filed 05/12/2011 Pages: 2
 MDU Exhibit 11
 Montana-Dakota Utilities Co., a Division of MDU Resources Group, Inc.

MDU Exhibit 11

Project Location Map



MONTANA-DAKOTA
UTILITIES CO.
 A Division of MDU Resources Group, Inc.
In the Community to Serve[®]

1:24,000
 March 2011

0 0.5 1 Miles

Meritmont Interconnect Substation	Dwelling Occupied	Existing Transmission Line	USFWS WSA	Stream	USFWS Conservation Easement	Highway
Right-of-Way (150 ft)	Dwelling Vacant	Existing Gas Pipeline	State WMA	Lake or Pond	USFWS Grazing Easement	Incorporated Area
Route Corridor (3 miles)	Church and/or Cemetery	Communication Tower	FCLTS Land	Wetland	USFWS Wetland Easement	PL56 Township Boundary
Existing Forbes Substation	Historic Sites (NHP)	Public Airport	State Surface Tracts			County Boundary
Existing MDU Ellendale J&K Substation		Private Airport				State Boundary

Exhibit 11
Sheet A1
Merricourt Wind Farm to Ellendale Project
 McIntosh and Dickey Counties