

MWFE 230kV Transmission Line



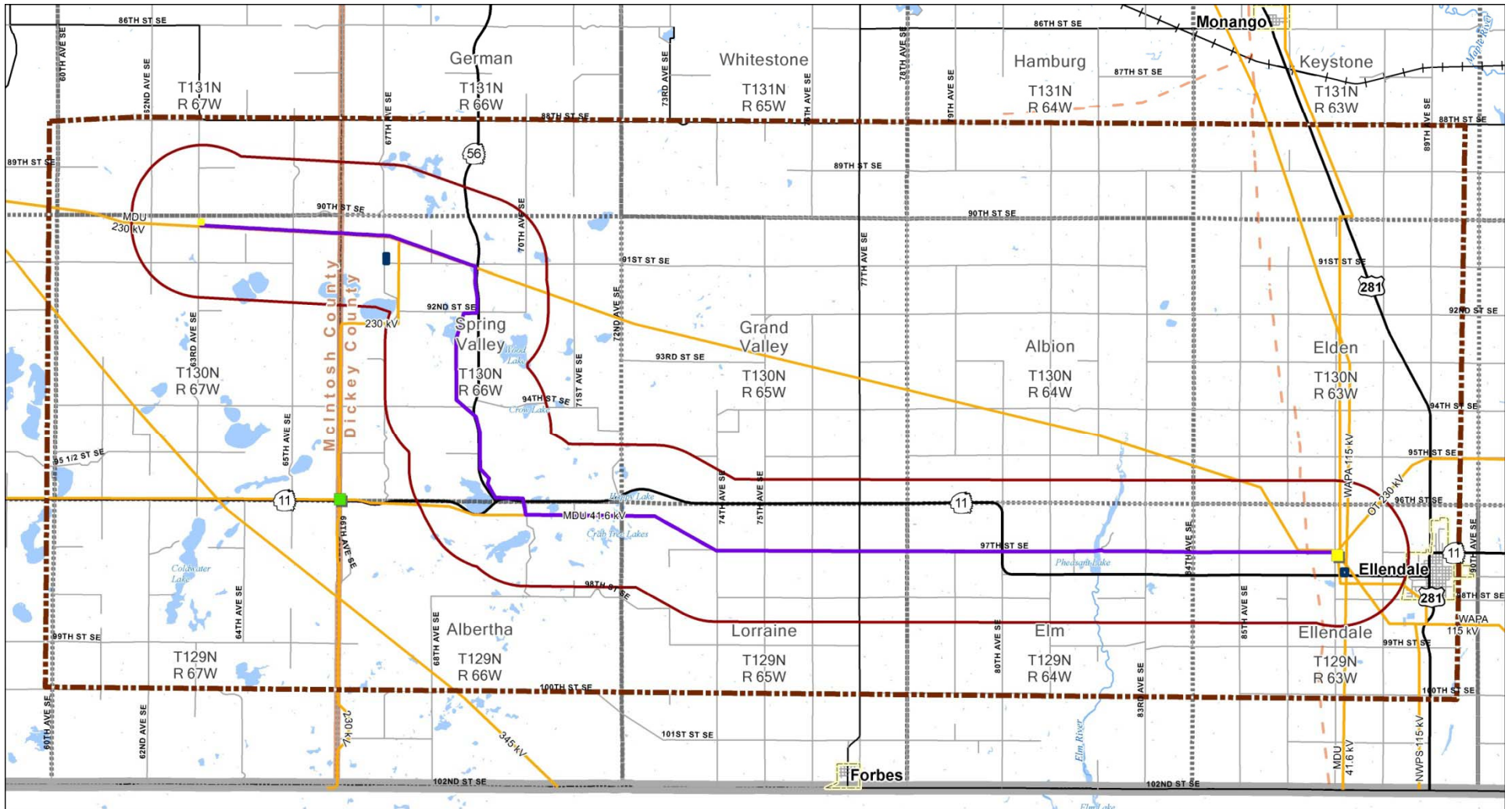
Wayne Bauer
HDR Engineering, Inc.
Project Manager

Corridor and Route Selection Strategy

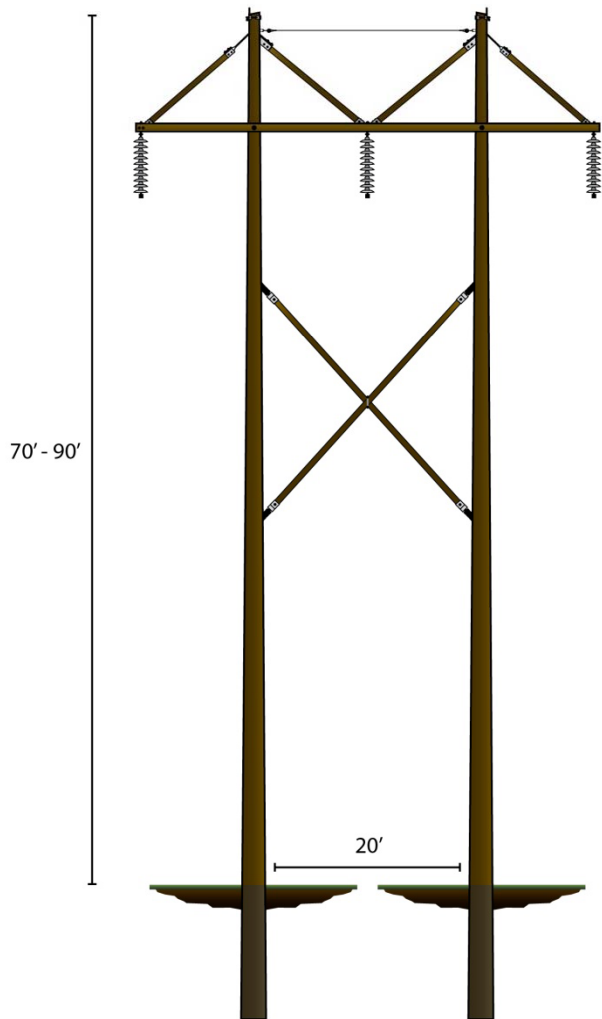


- Tiered process – Study Area ➡ Corridor ➡ Route
- Utilize existing transmission and road rights-of-way
- Comply with Commission Siting Criteria
- Design and construction limitations
- Economic considerations
- Consideration of agency and public comments

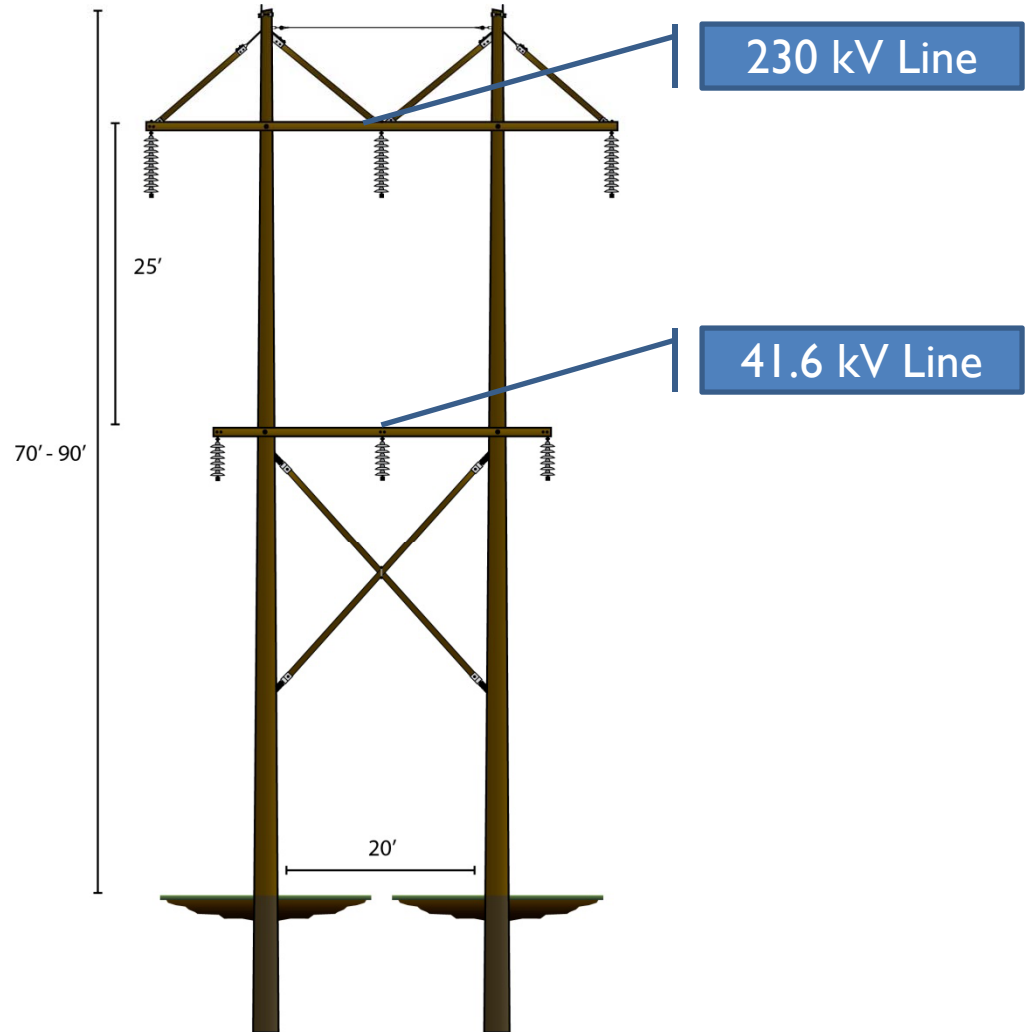
Corridor and Route Description



Transmission Structure Description

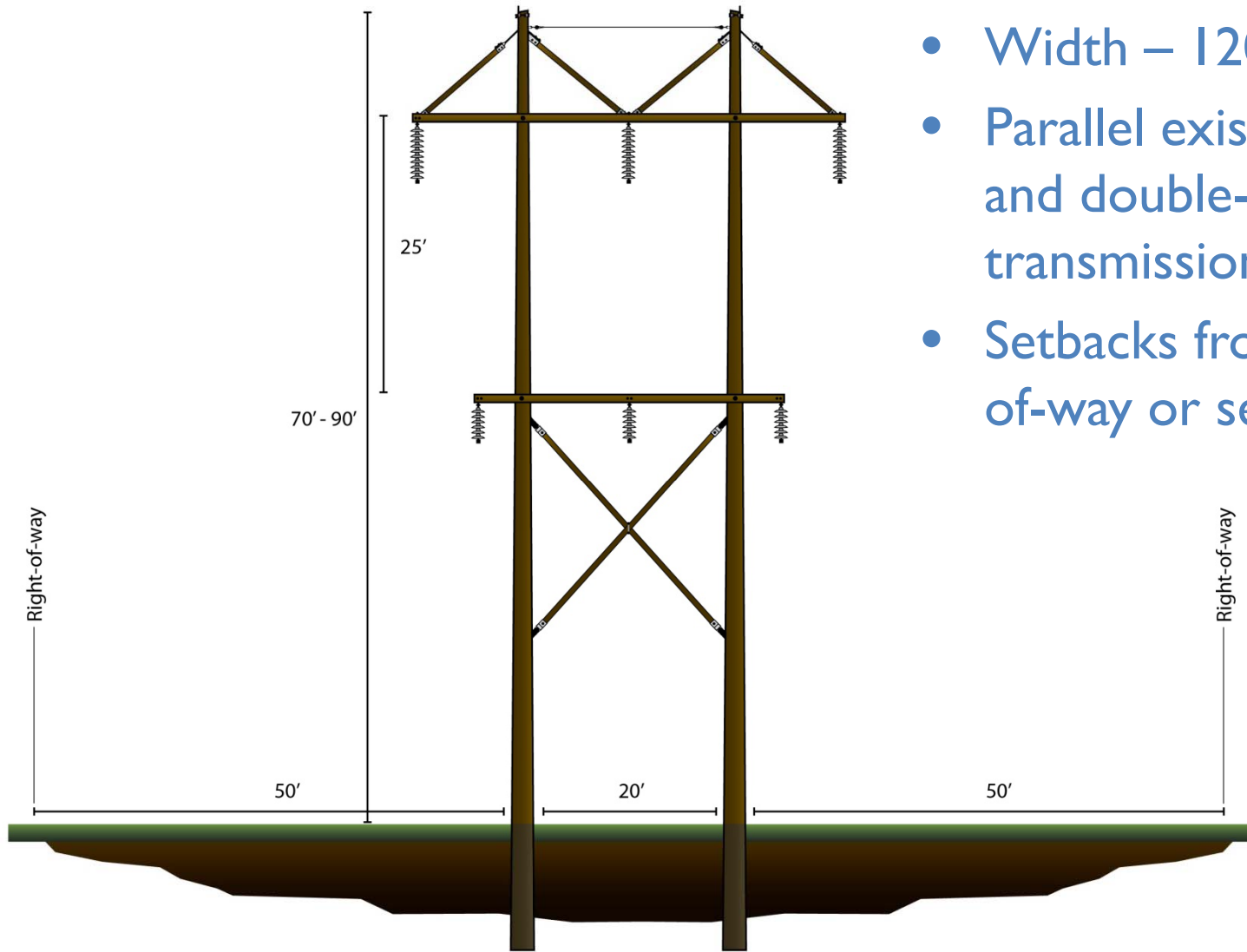


Single Circuit H-Frame



Double Circuit H-Frame

Right-of-Way Standard



Double Circuit H-Frame Right-of-Way

- Width – 120 feet
- Parallel existing features and double-circuit 41.6 kV transmission line
- Setbacks from road rights-of-way or section lines

Construction and Maintenance Procedures



Step 1: Survey structure locations and identify entrance and exit locations

