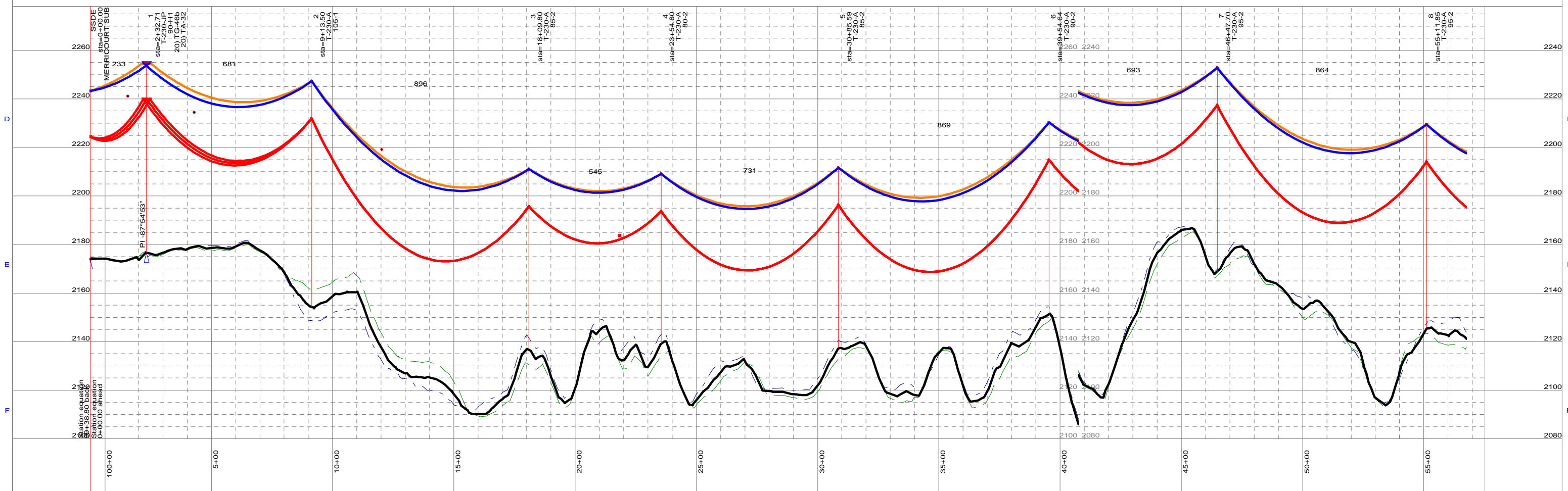
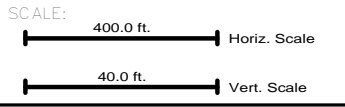


Section 3
T130N R67W



NO.	DATE	BY	REVISION
A	9/21/2011	CJ	ISSUED FOR CONSTRUCTION



NOTES:

- ACCESS ROUTE
- EXISTING LINE CROSSINGS
- ALIGNMENT

* CROSSARMS SPACING INCREASED TO 28' - 6"

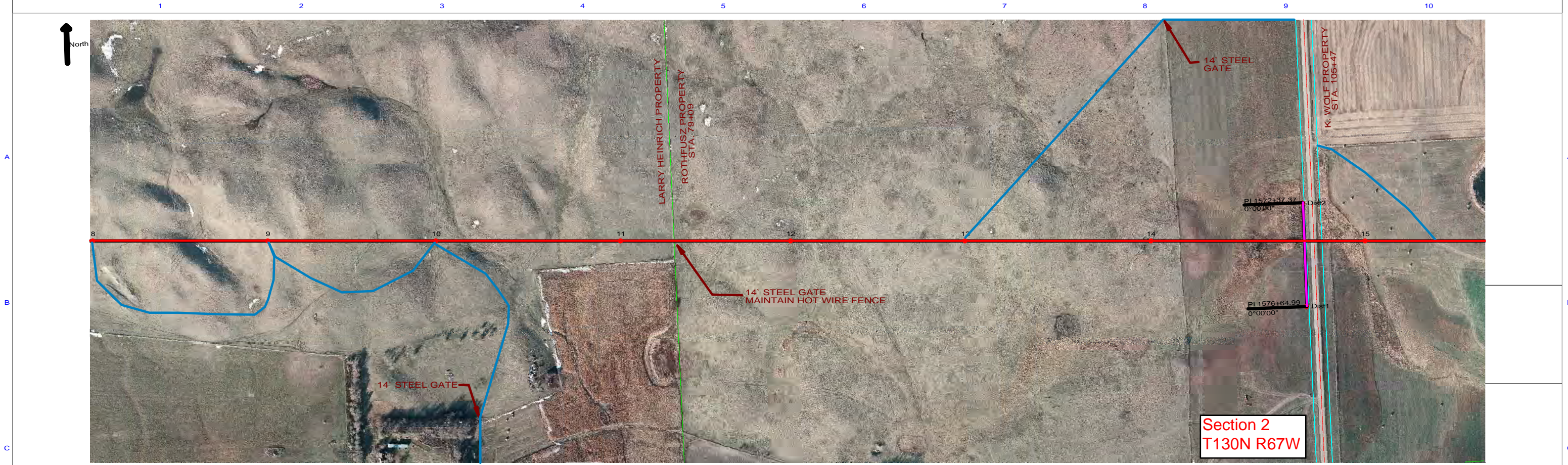
DRAWN:

APPROVED:

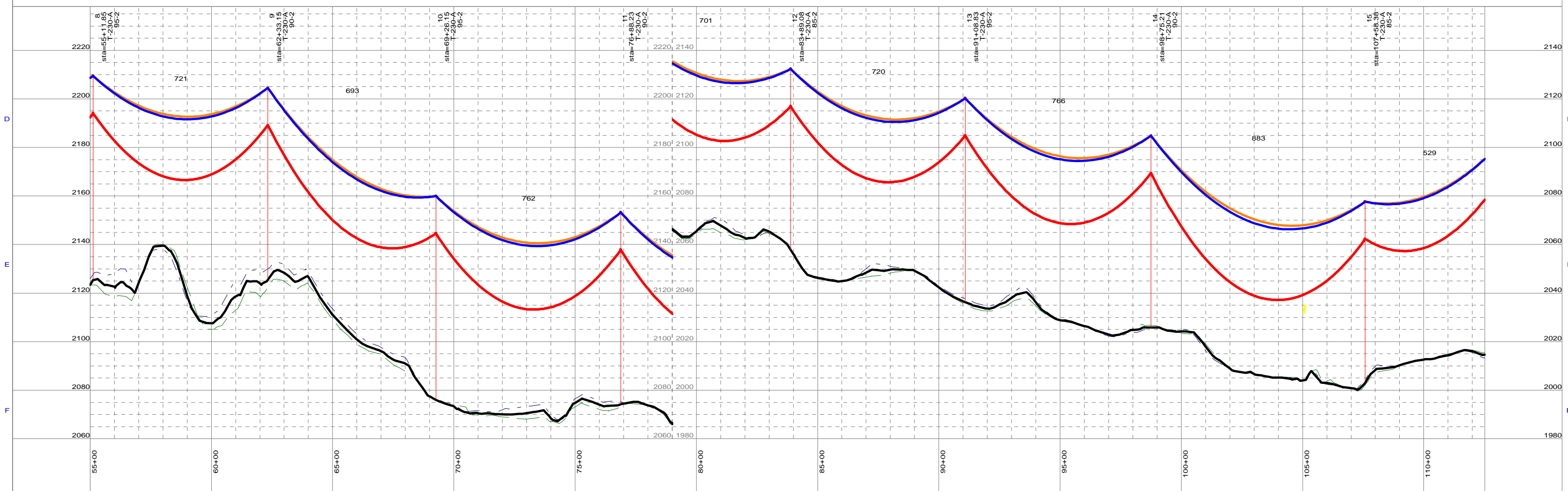
MONTANA-DAKOTA UTILITIES CO.

DATE:

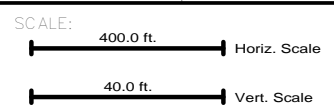
SHEET: 1 of 29



Section 2
T130N R67W



NO.	DATE	BY	REVISION
A	9/21/2011	CJ	ISSUED FOR CONSTRUCTION



NOTES:

- ACCESS ROUTE
- EXISTING LINE CROSSINGS
- ALIGNMENT

* CROSSARMS SPACING INCREASED TO 28' - 6"

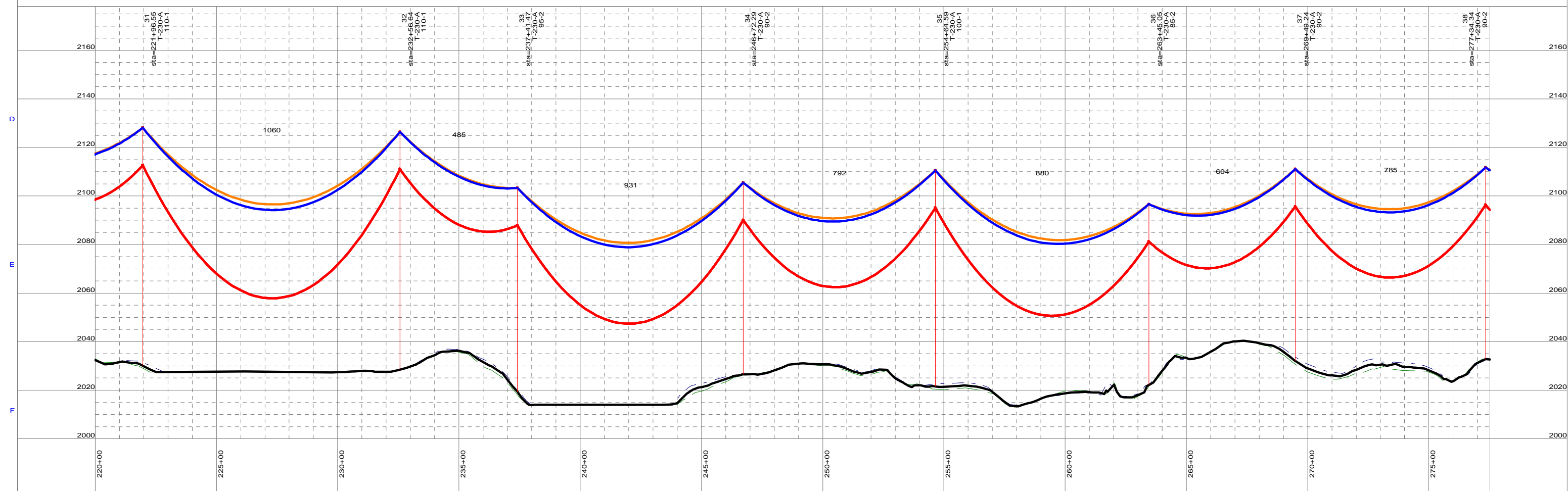
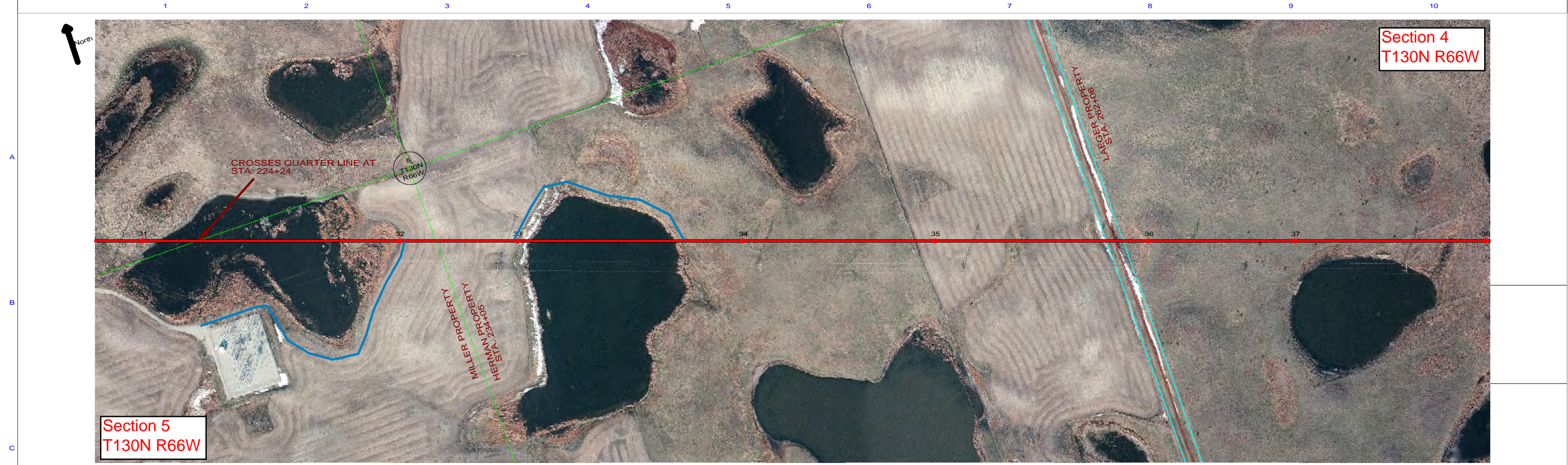
DRAWN: _____

APPROVED: _____

MONTANA-DAKOTA UTILITIES CO.

DATE: _____

SHEET: 2 of 29



NO:	DATE:	BY:	REVISION:	NO:	DATE:	BY:	REVISION:		
				A	9/21/2011	CJ	ISSUED FOR CONSTRUCTION		

SCALE:

400.0 ft. Horiz. Scale

40.0 ft. Vert. Scale

NOTES:

- ACCESS ROUTE
- EXISTING LINE CROSSINGS
- ALIGNMENT

* CROSSARMS SPACING INCREASED TO 28' - 6"

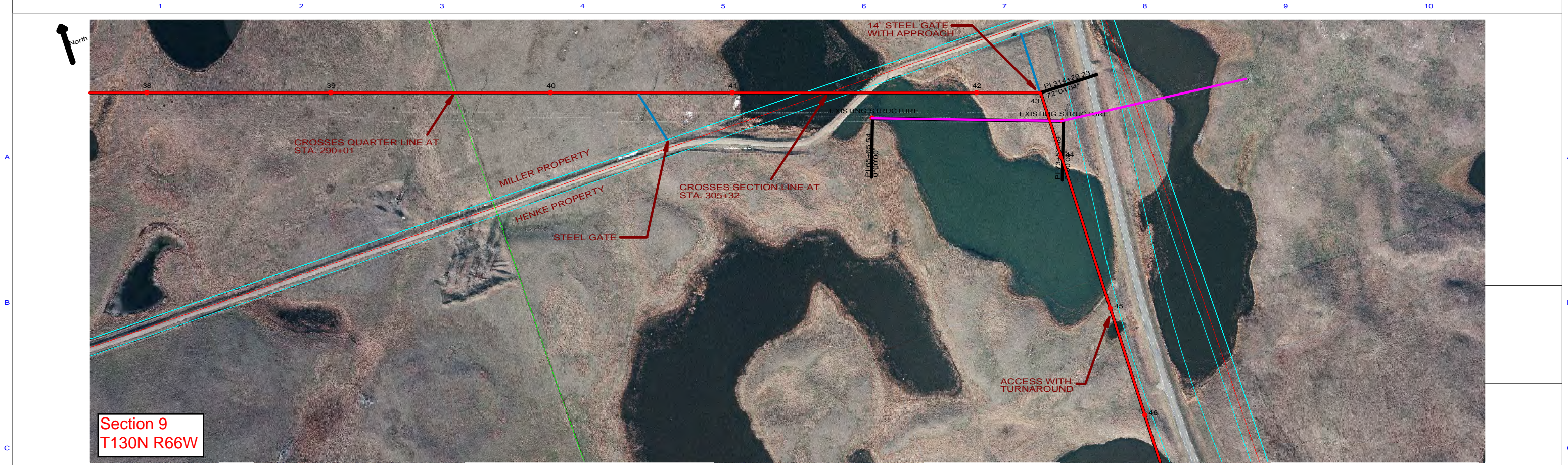
DRAWN:

APPROVED:

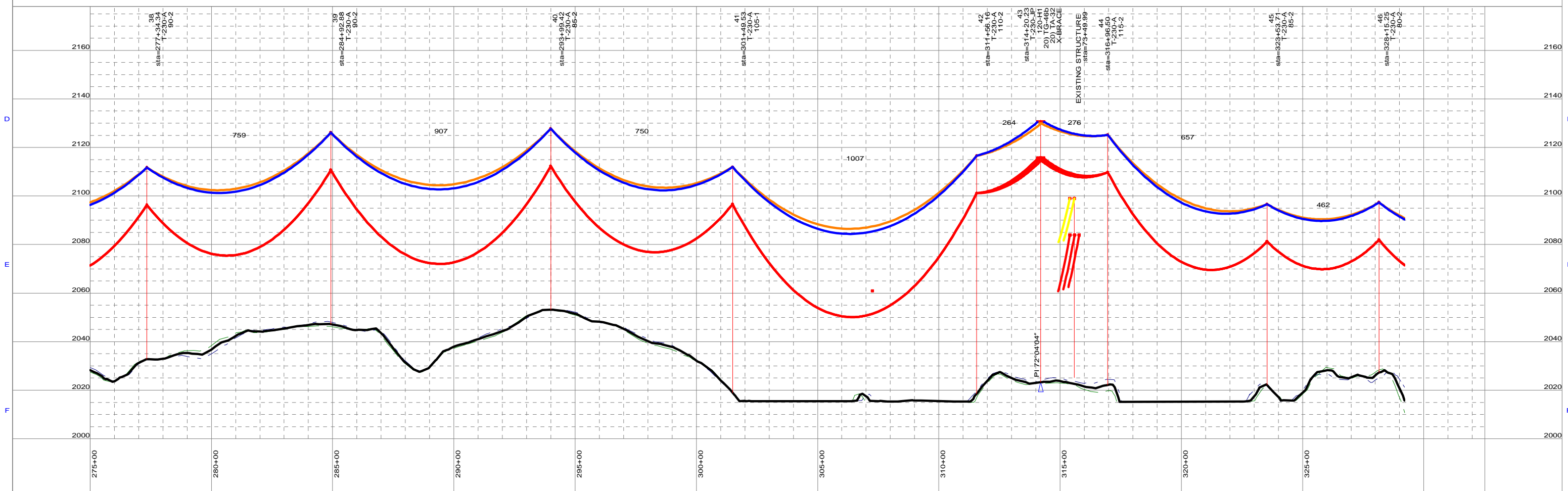
MONTANA-DAKOTA UTILITIES CO.

DATE:

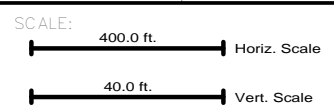
SHEET: 5 of 29



Section 9
T130N R66W



NO:	DATE:	BY:	REVISION:
A	9/21/2011	CJ	ISSUED FOR CONSTRUCTION



NOTES:

- ACCESS ROUTE
- EXISTING LINE CROSSINGS
- ALIGNMENT

* CROSSARMS SPACING INCREASED TO 28' - 6"

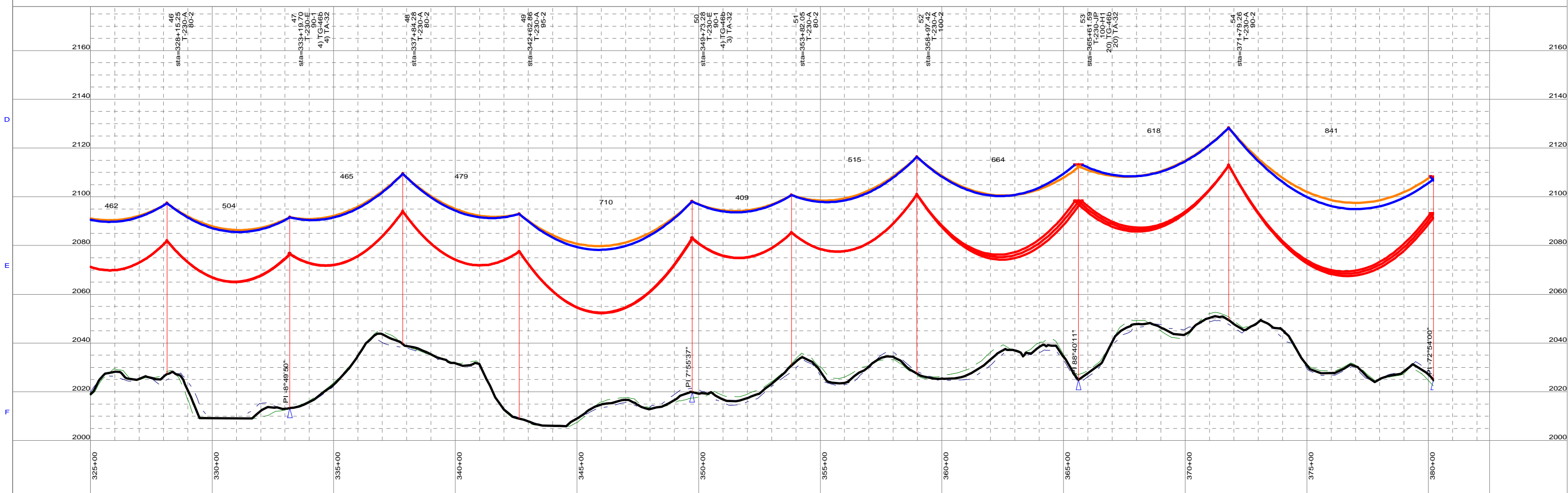
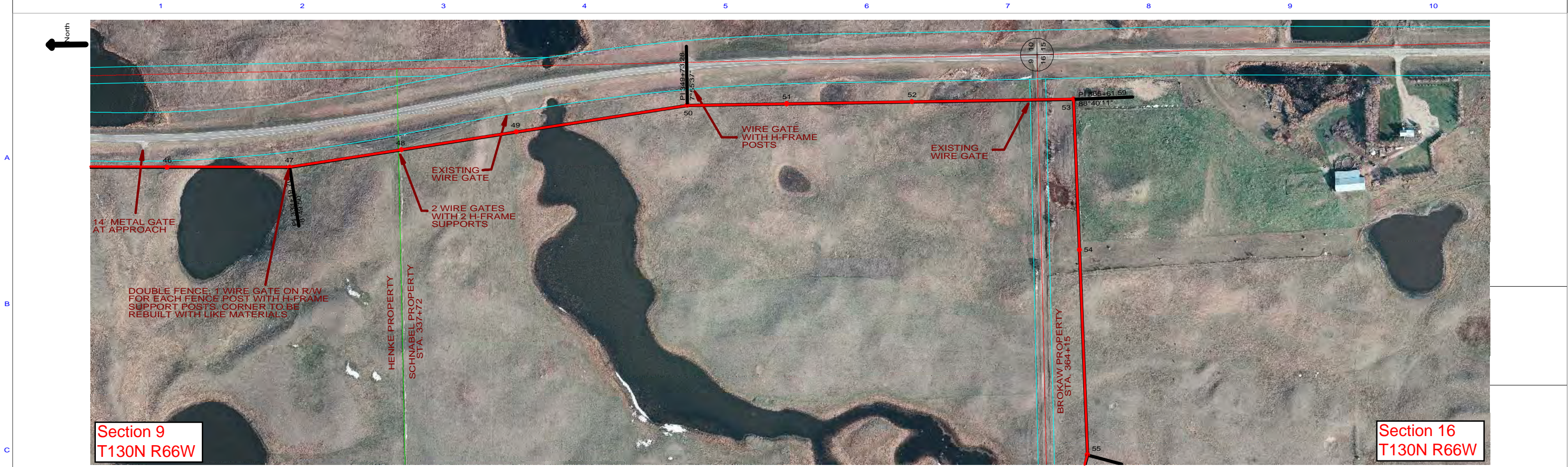
DRAWN:

APPROVED:

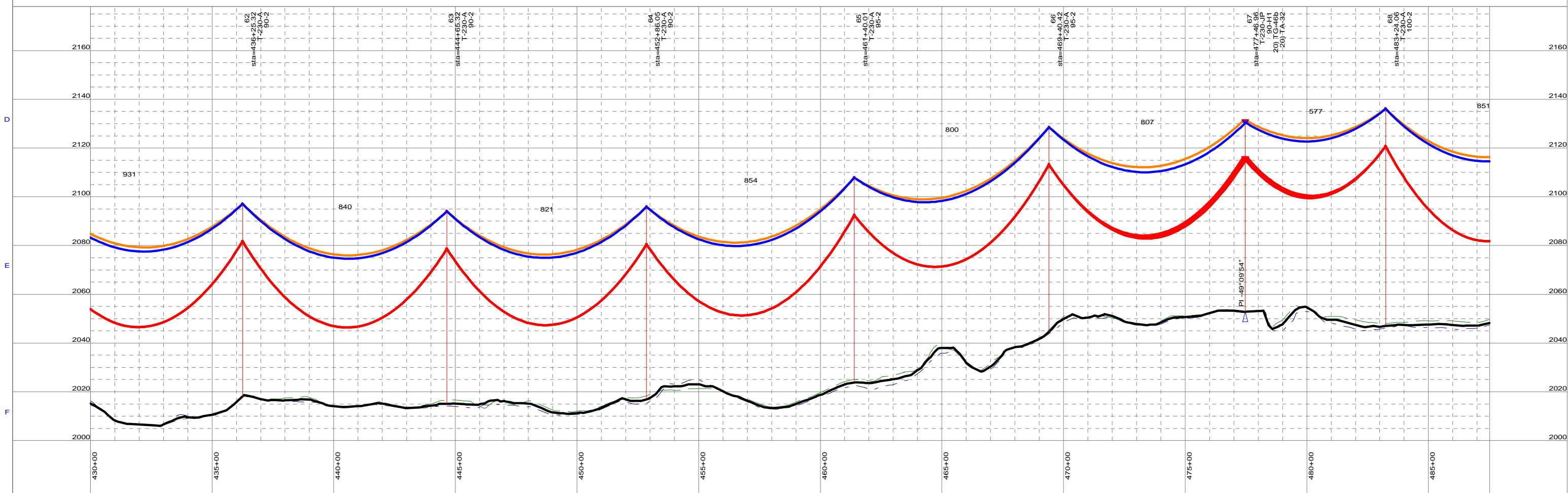
MONTANA-DAKOTA UTILITIES CO.

DATE:

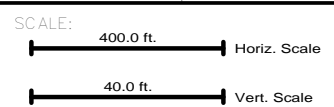
SHEET: 6 of 29



NO: DATE: BY: REVISION:				NO: DATE: BY: REVISION:				SCALE: 400.0 ft. Horiz. Scale 40.0 ft. Vert. Scale		NOTES: ACCESS ROUTE EXISTING LINE CROSSINGS ALIGNMENT * CROSSARMS SPACING INCREASED TO 28' - 6"		DRAWN: APPROVED:		MONTANA-DAKOTA UTILITIES CO.		DATE: SHEET: 7 of 29	
A 9/21/2011 CJ ISSUED FOR CONSTRUCTION																	



NO:	DATE:	BY:	REVISION:
A	9/21/2011	CJ	ISSUED FOR CONSTRUCTION

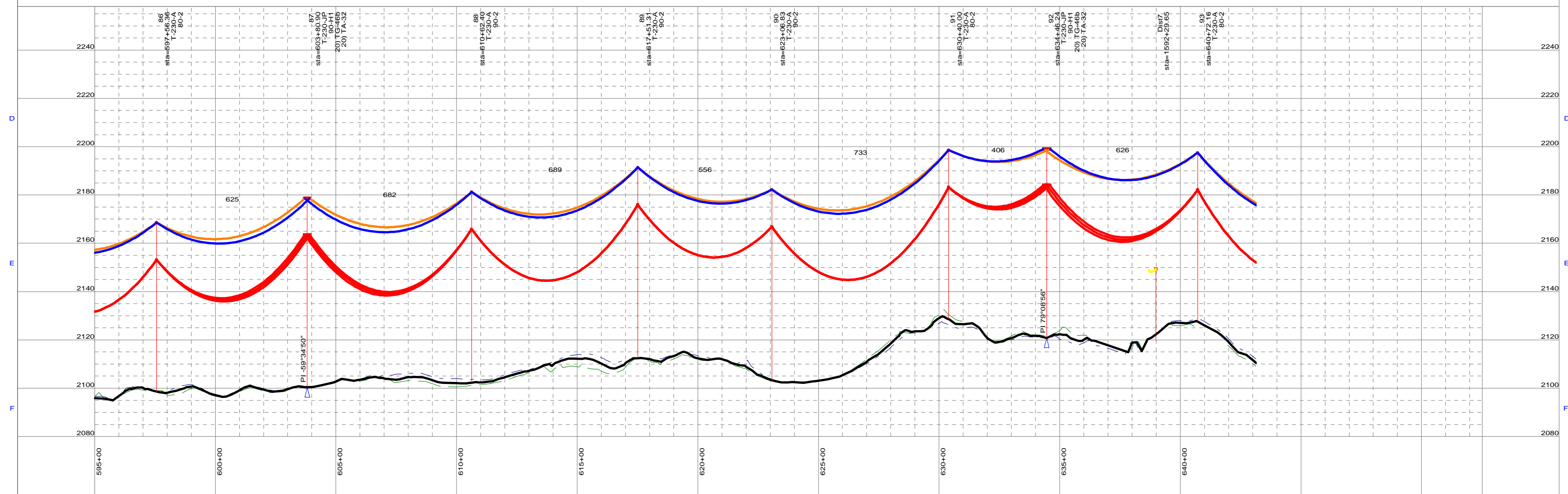
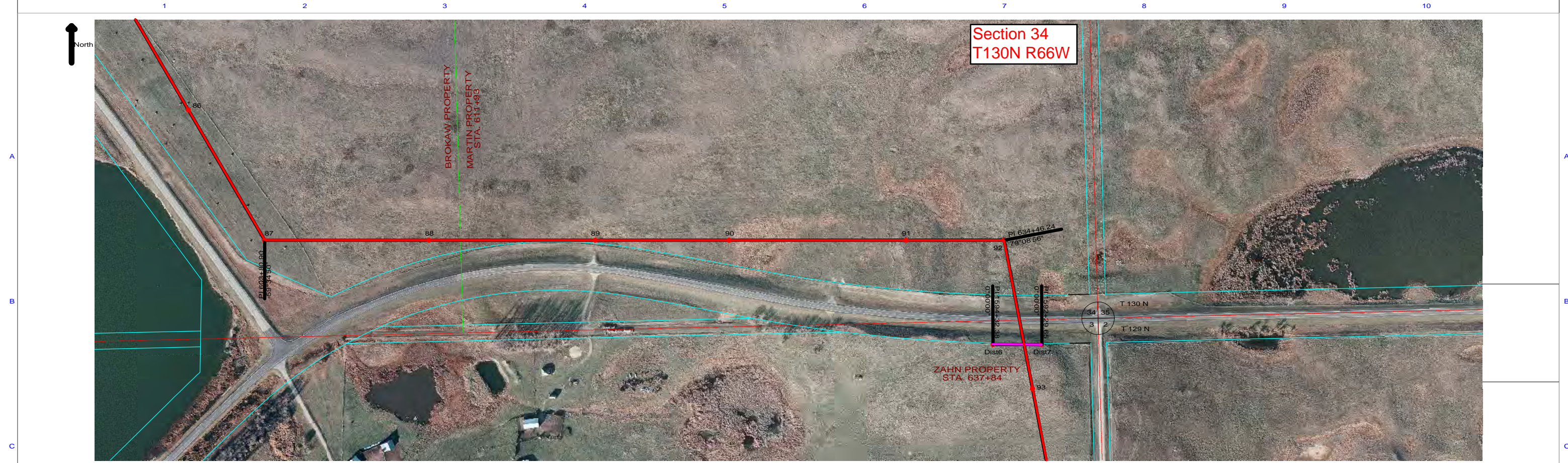


NOTES:
 — ACCESS ROUTE
 — EXISTING LINE CROSSINGS
 — ALIGNMENT
 * CROSSARMS SPACING INCREASED TO 28' - 6"

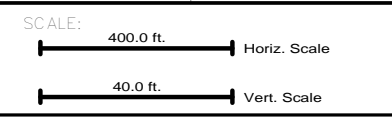
DRAWN: _____
 APPROVED: _____

MONTANA-DAKOTA UTILITIES CO.

DATE: _____
 SHEET: 9 of 29



NO.	DATE	BY	REVISION
A	9/21/2011	CJ	ISSUED FOR CONSTRUCTION



NOTES:

- ACCESS ROUTE
- EXISTING LINE CROSSINGS
- ALIGNMENT

* CROSSARMS SPACING INCREASED TO 28' - 6"

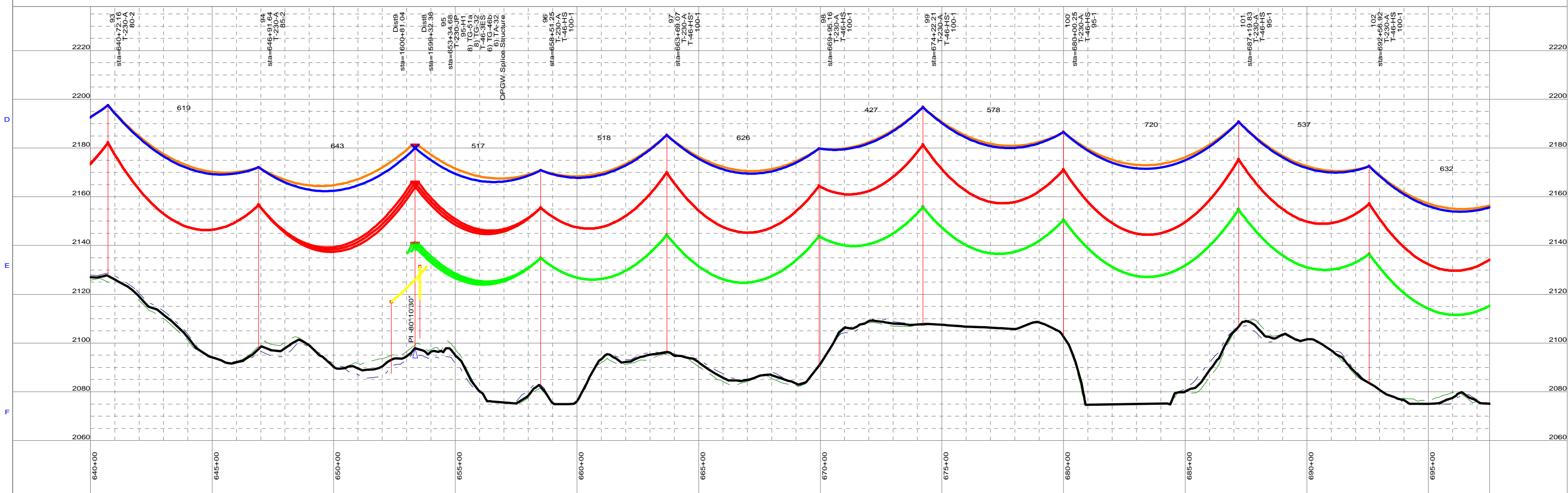
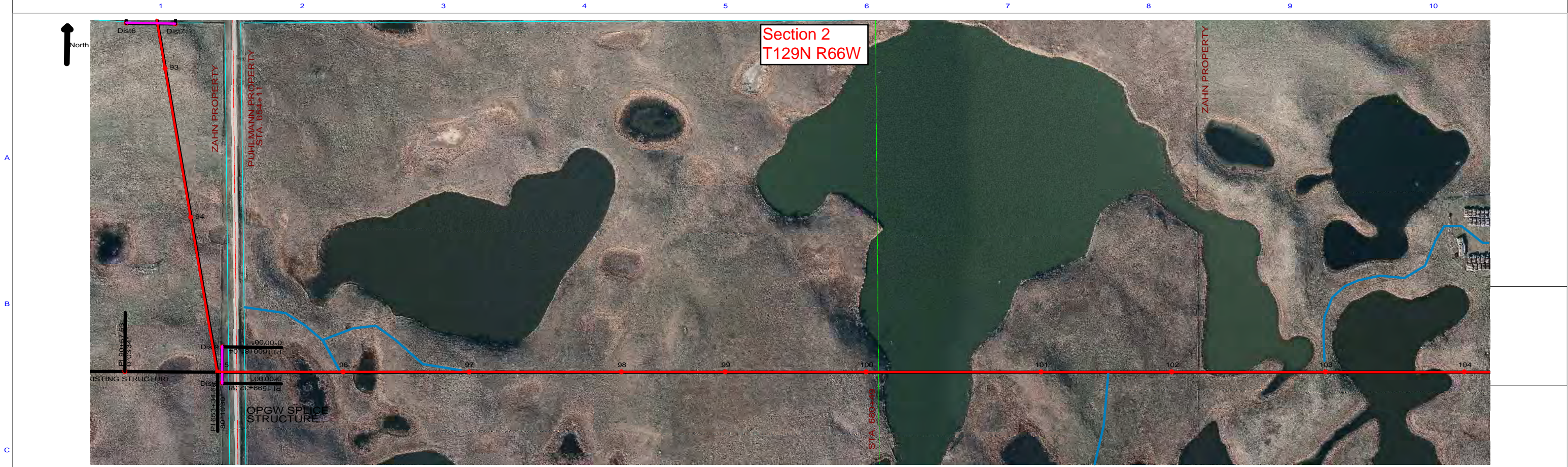
DRAWN:

APPROVED:

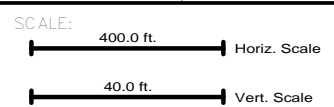
MONTANA-DAKOTA UTILITIES CO.

DATE:

SHEET: 12 of 29



NO.	DATE	BY	REVISION
A	9/21/2011	CJ	ISSUED FOR CONSTRUCTION



- NOTES:
- ACCESS ROUTE
 - EXISTING LINE CROSSINGS
 - ALIGNMENT
- * CROSSARMS SPACING INCREASED TO 28' - 6"

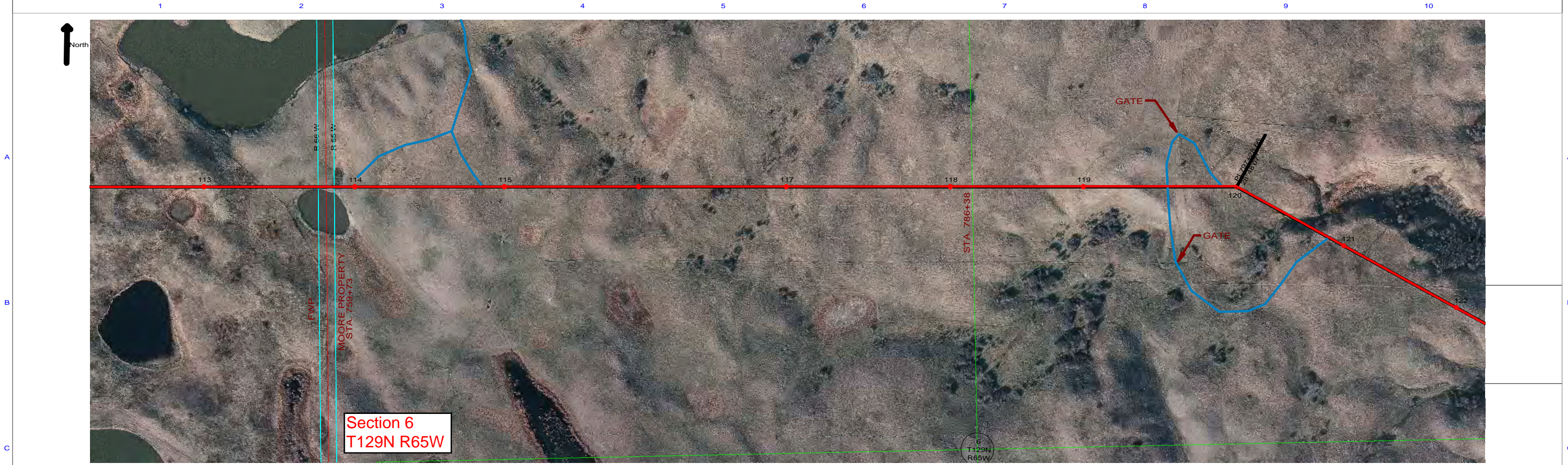
DRAWN: _____

APPROVED: _____

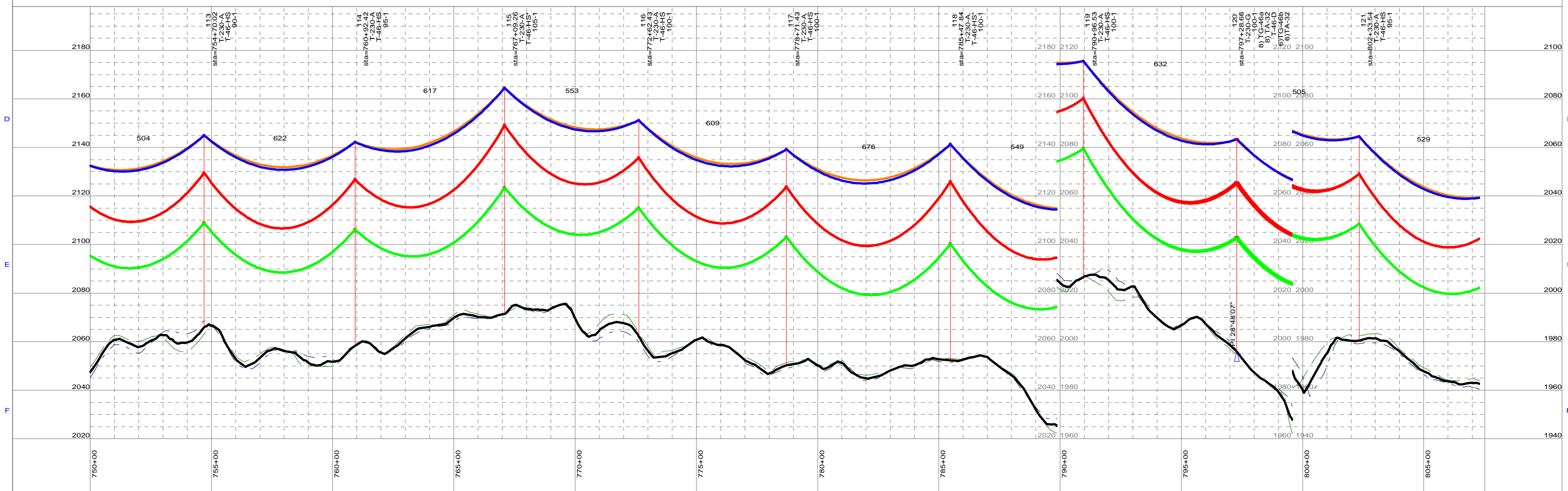
MONTANA-DAKOTA UTILITIES CO.

DATE: _____

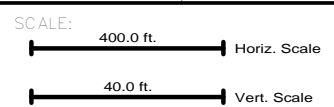
SHEET: 13 of 29



Section 6
T129N R65W



NO.	DATE	BY	REVISION
A	9/21/2011	CJ	ISSUED FOR CONSTRUCTION



NOTES:

- ACCESS ROUTE
- EXISTING LINE CROSSINGS
- ALIGNMENT

* CROSSARMS SPACING INCREASED TO 28' - 6"

DRAWN: _____

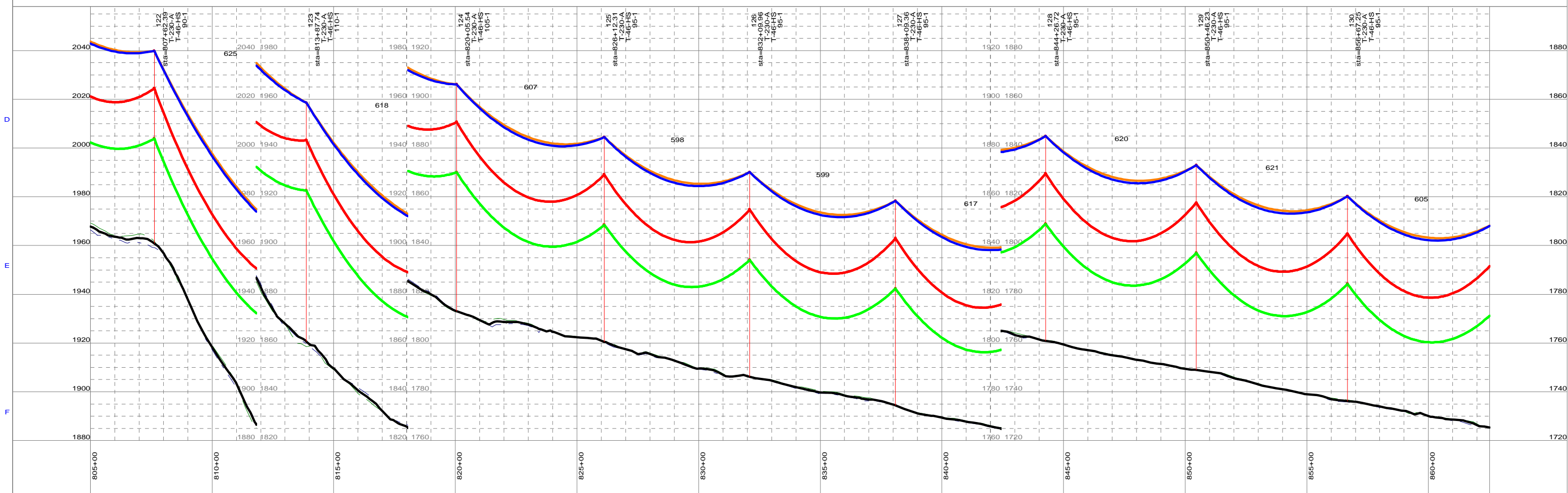
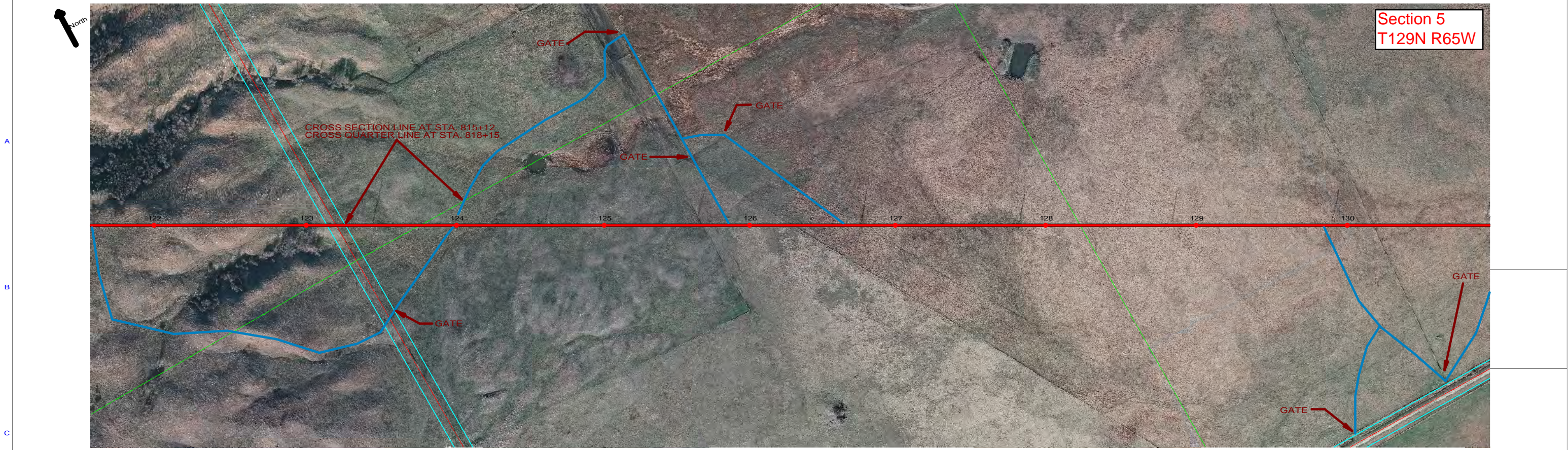
APPROVED: _____

MONTANA-DAKOTA UTILITIES CO.

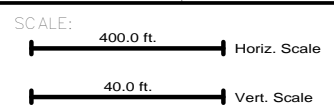
DATE: _____

SHEET: 15 of 29

**Section 5
T129N R65W**



NO:	DATE:	BY:	REVISION:
A	9/21/2011	CJ	ISSUED FOR CONSTRUCTION



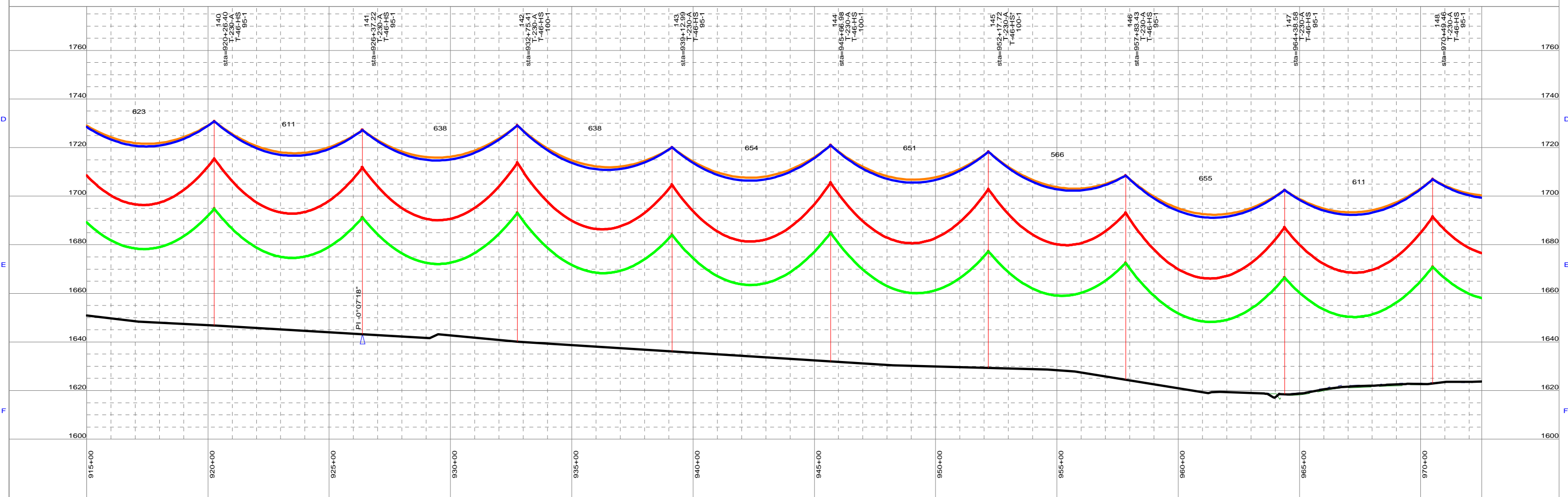
NOTES:
— ACCESS ROUTE
— EXISTING LINE CROSSINGS
— ALIGNMENT
 * CROSSARMS SPACING INCREASED TO 28' - 6"

DRAWN:	MONTANA-DAKOTA UTILITIES CO.	DATE:
APPROVED:		SHEET: 16 of 29

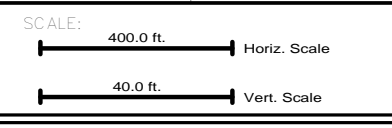
1 2 3 4 5 6 7 8 9 10



Section 10
T129N R65W



NO:	DATE:	BY:	REVISION:



NOTES:

- ACCESS ROUTE
- EXISTING LINE CROSSINGS
- ALIGNMENT

* CROSSARMS SPACING INCREASED TO 28' - 6"

DRAWN:

APPROVED:

MONTANA-DAKOTA UTILITIES CO.

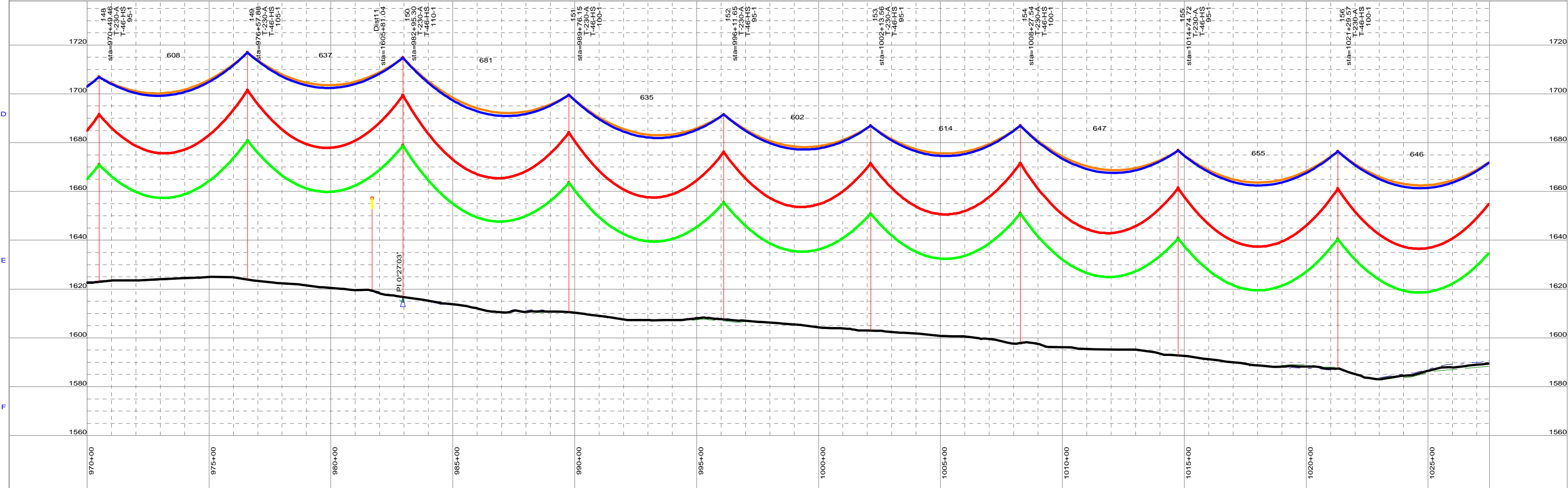
DATE:

SHEET: 18 of 29

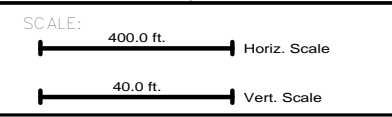
1 2 3 4 5 6 7 8 9 10



Section 11
T129N R65W



NO:	DATE:	BY:	REVISION:



NOTES:

- ACCESS ROUTE
- EXISTING LINE CROSSINGS
- ALIGNMENT

* CROSSARMS SPACING INCREASED TO 28' - 6"

DRAWN:

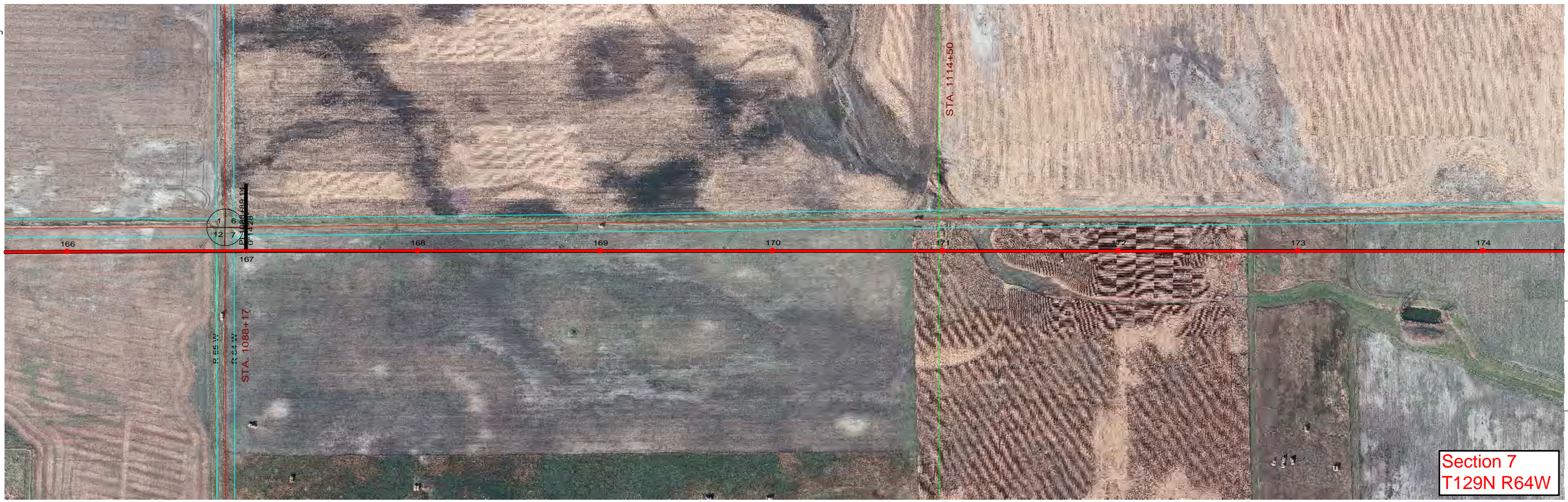
APPROVED:

MONTANA-DAKOTA UTILITIES CO.

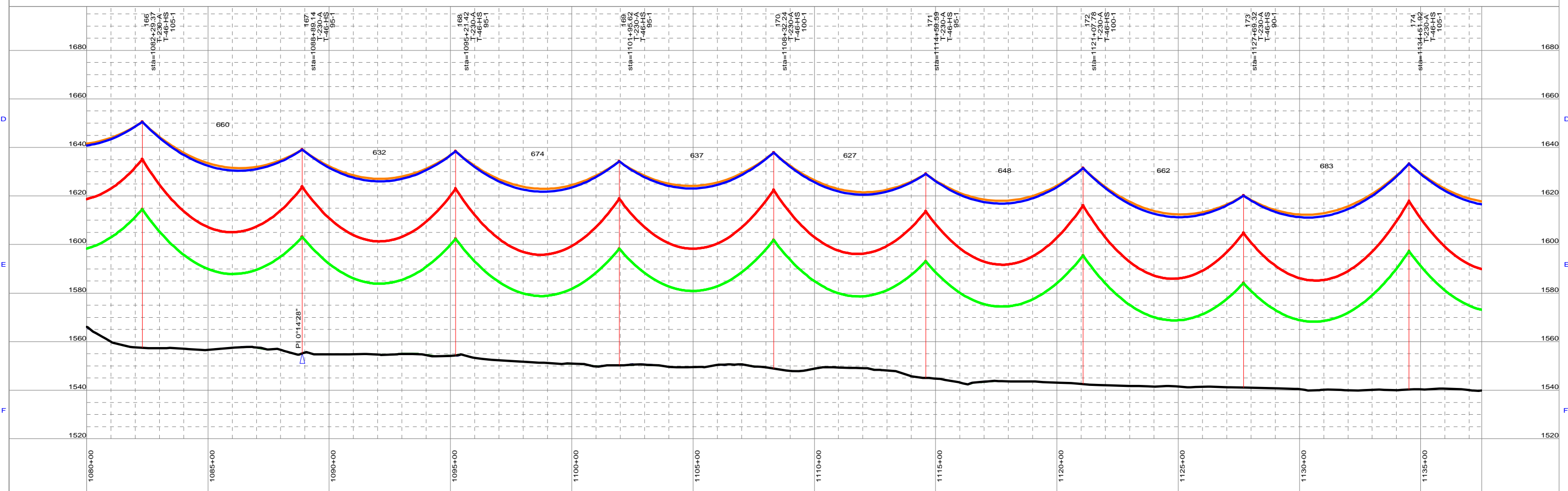
DATE:

SHEET: 19 of 29

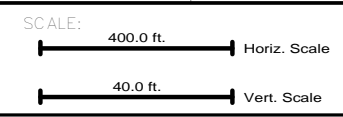
1 2 3 4 5 6 7 8 9 10



Section 7
T129N R64W



NO:	DATE:	BY:	REVISION:
A	9/21/2011	CJ	ISSUED FOR CONSTRUCTION



NOTES:

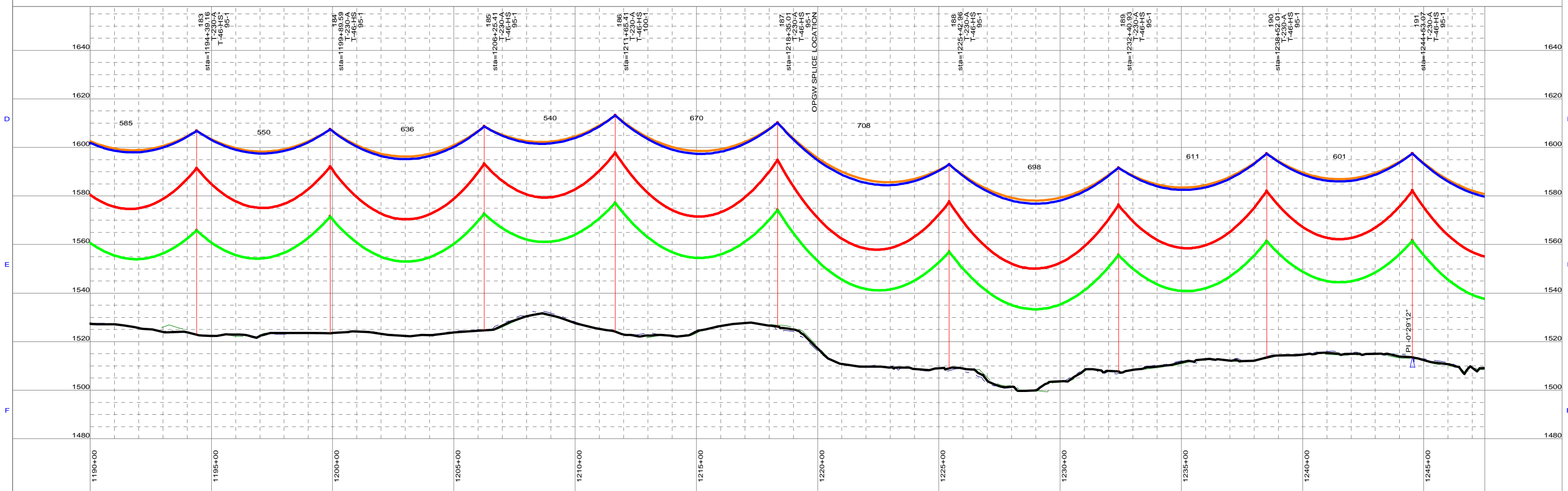
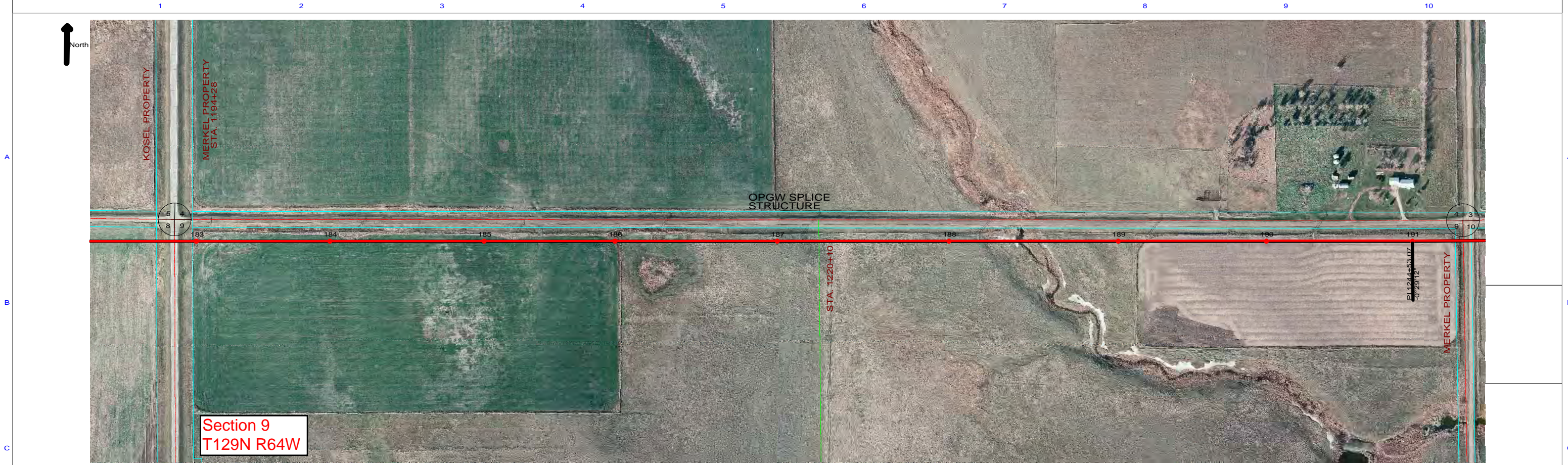
- ACCESS ROUTE
- EXISTING LINE CROSSINGS
- ALIGNMENT

* CROSSARMS SPACING INCREASED TO 28' - 6"

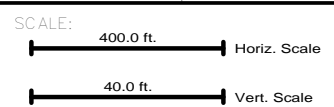
DRAWN:
APPROVED:

**MONTANA-DAKOTA
UTILITIES CO.**

DATE:
SHEET: 21 of 29



NO.	DATE	BY	REVISION
A	9/21/2011	CJ	ISSUED FOR CONSTRUCTION



NOTES:

- ACCESS ROUTE
- EXISTING LINE CROSSINGS
- ALIGNMENT

* CROSSARMS SPACING INCREASED TO 28' - 6"

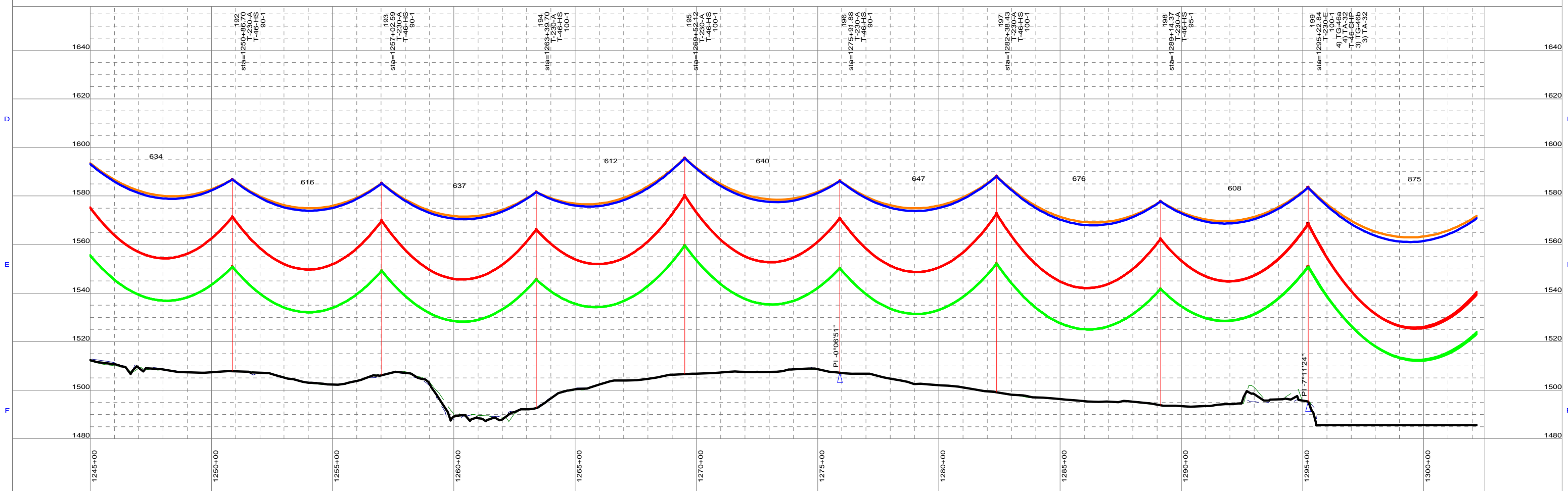
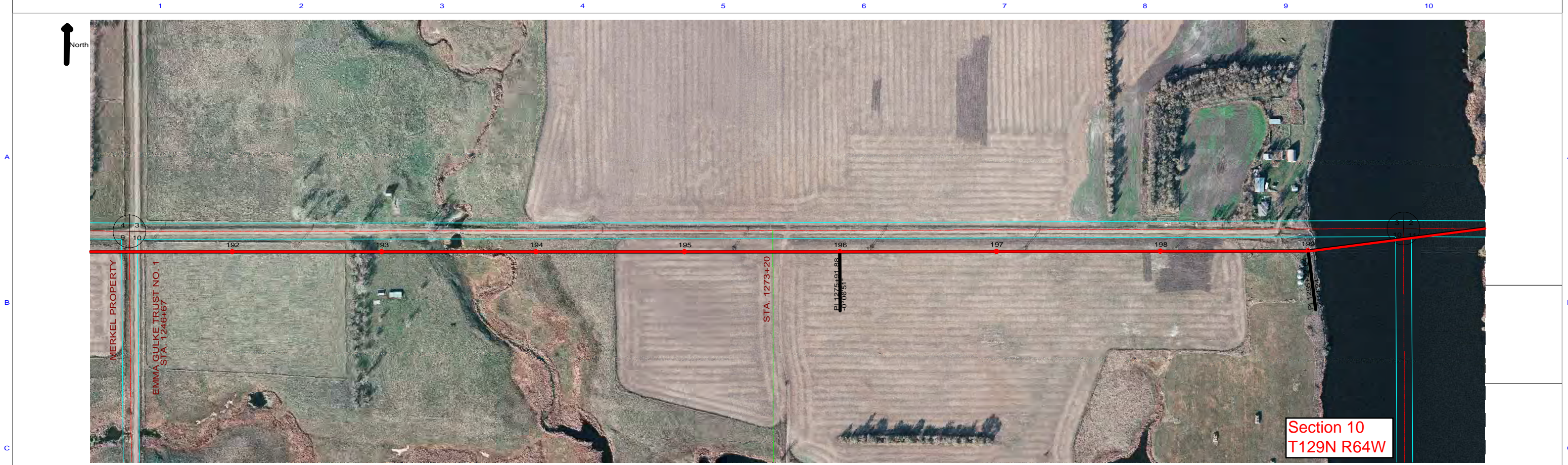
DRAWN: _____

APPROVED: _____

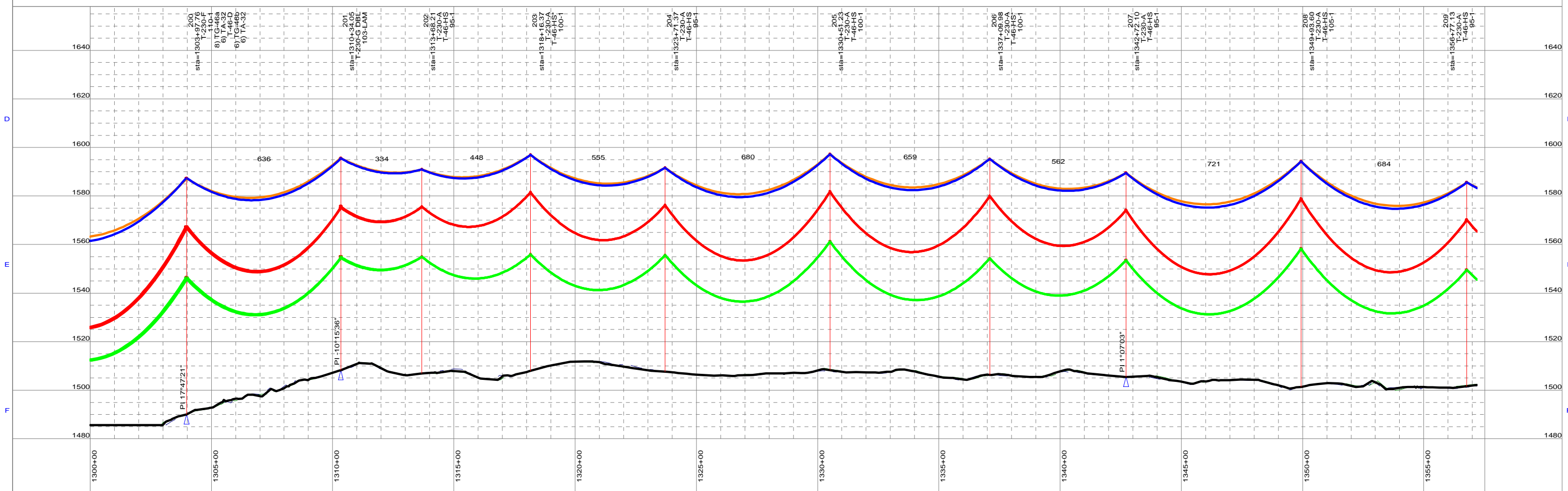
MONTANA-DAKOTA UTILITIES CO.

DATE: _____

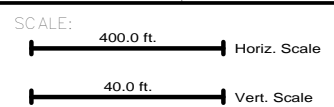
SHEET: 23 of 29



NO:	DATE:	BY:	REVISION:	NO:	DATE:	BY:	REVISION:	SCALE:		
				A	9/21/2011	CJ	ISSUED FOR CONSTRUCTION	400.0 ft. Horiz. Scale		
								40.0 ft. Vert. Scale		
								NOTES:	DRAWN:	DATE:
								<ul style="list-style-type: none"> — ACCESS ROUTE — EXISTING LINE CROSSINGS — ALIGNMENT 	APPROVED:	
								* CROSSARMS SPACING INCREASED TO 28' - 6"	MONTANA-DAKOTA UTILITIES CO.	
										SHEET: 24 of 29



NO.	DATE	BY	REVISION
A	9/21/2011	CJ	ISSUED FOR CONSTRUCTION



NOTES:

- ACCESS ROUTE
- EXISTING LINE CROSSINGS
- ALIGNMENT

* CROSSARMS SPACING INCREASED TO 28' - 6"

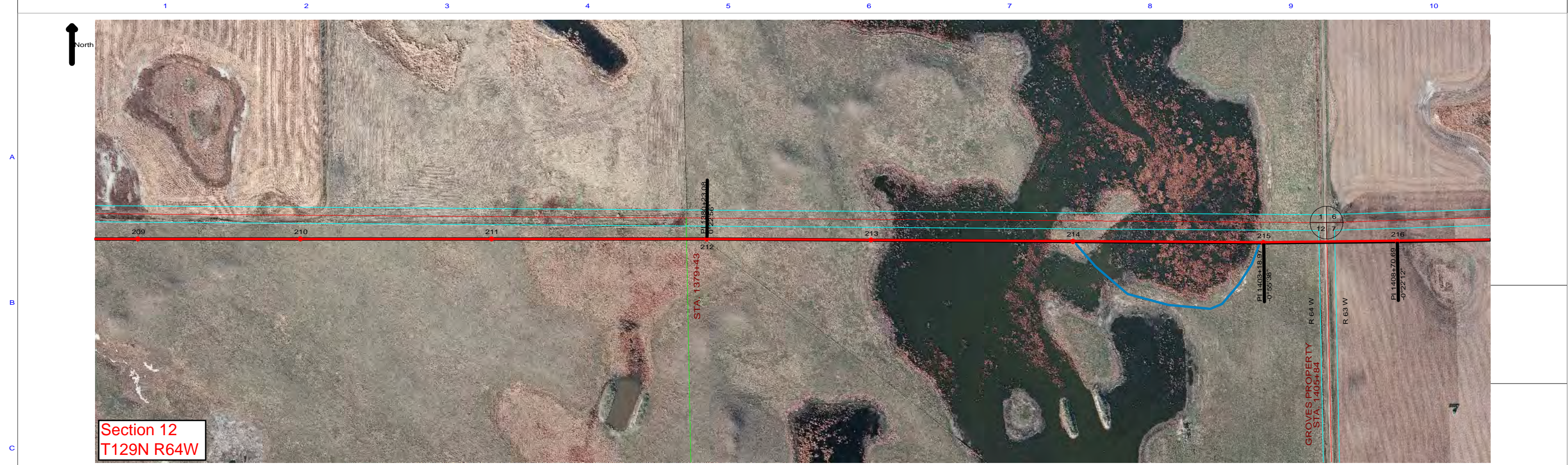
DRAWN:

APPROVED:

MONTANA-DAKOTA UTILITIES CO.

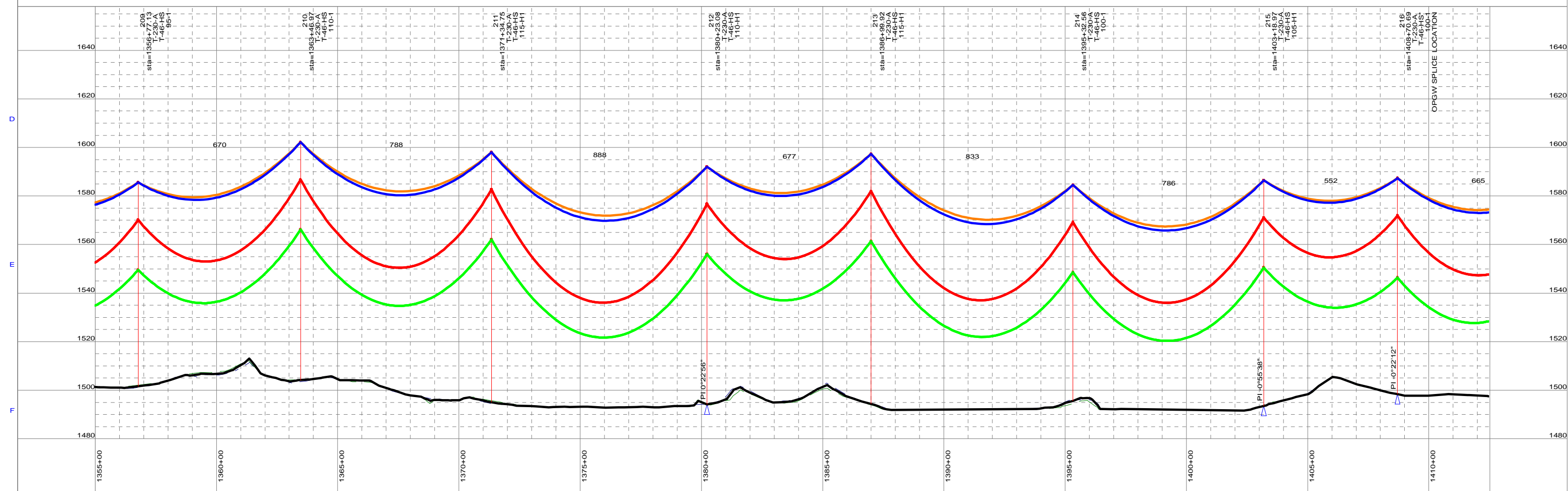
DATE:

SHEET: 25 of 29

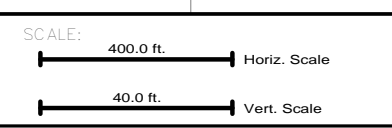


Section 12
T129N R64W

GROVES PROPERTY
STA. 1405+84



NO.	DATE	BY	REVISION
A	9/21/2011	CJ	ISSUED FOR CONSTRUCTION



NOTES:

- ACCESS ROUTE
- EXISTING LINE CROSSINGS
- ALIGNMENT

* CROSSARMS SPACING INCREASED TO 28' - 6"

DRAWN:

APPROVED:

MONTANA-DAKOTA UTILITIES CO.

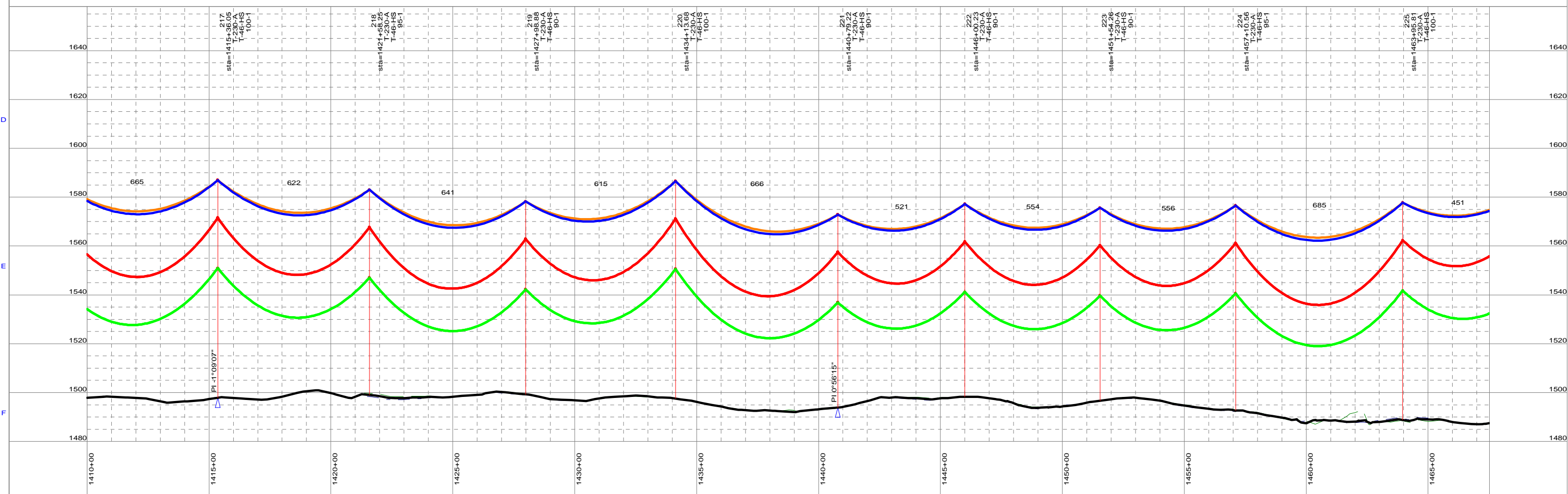
DATE:

SHEET: 26 of 29

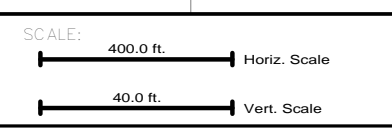
1 2 3 4 5 6 7 8 9 10



Section 7
T129N R63W



NO:	DATE:	BY:	REVISION:



NOTES:

- ACCESS ROUTE
- EXISTING LINE CROSSINGS
- ALIGNMENT

* CROSSARMS SPACING INCREASED TO 28' - 6"

DRAWN: _____

APPROVED: _____

MONTANA-DAKOTA UTILITIES CO.

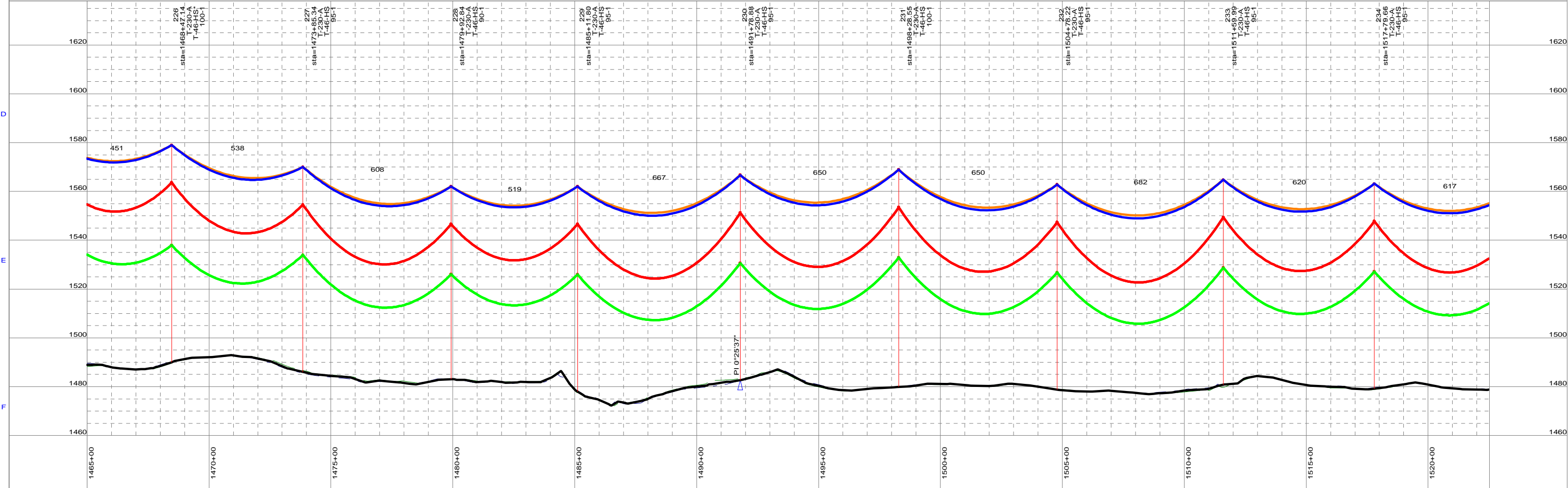
DATE: _____

SHEET: 27 of 29

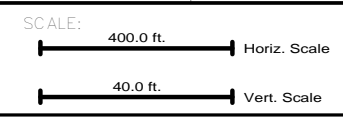
1 2 3 4 5 6 7 8 9 10



Section 8
T129N R63W



NO:	DATE:	BY:	REVISION:
A	9/21/2011	CJ	ISSUED FOR CONSTRUCTION



NOTES:

- ACCESS ROUTE
- EXISTING LINE CROSSINGS
- ALIGNMENT

* CROSSARMS SPACING INCREASED TO 28' - 6"

DRAWN:
APPROVED:

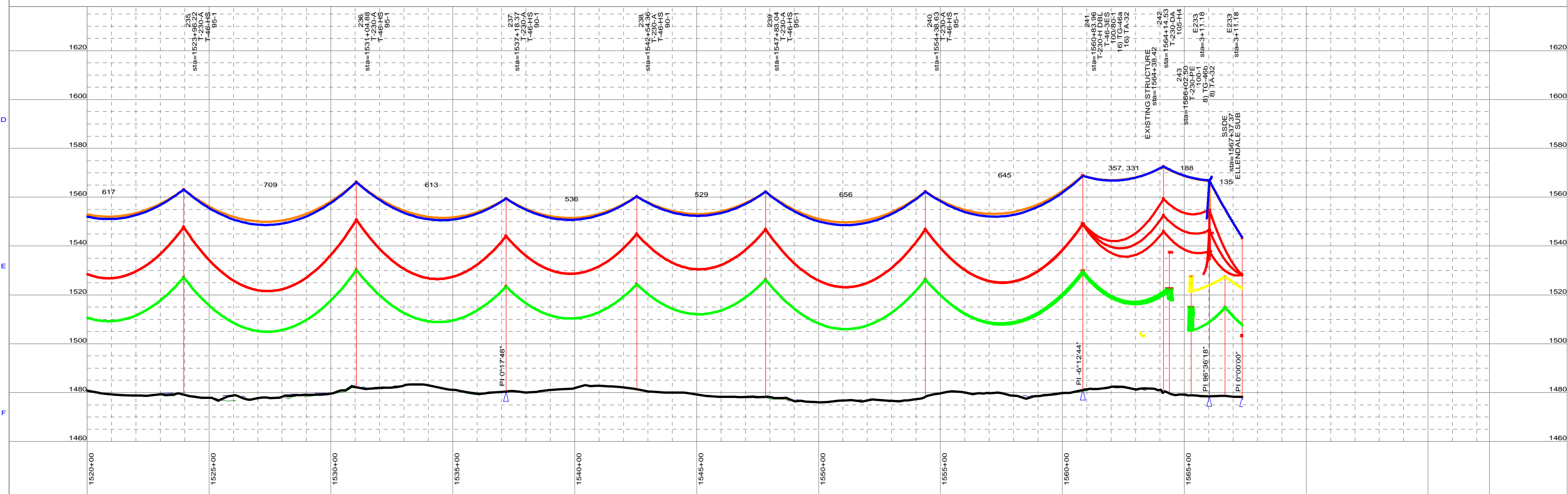
**MONTANA-DAKOTA
UTILITIES CO.**

DATE:
SHEET: 28 of 29

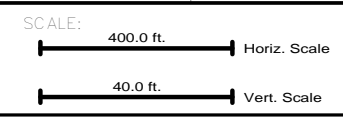
1 2 3 4 5 6 7 8 9 10



Section 9
T129N R63W



NO.	DATE	BY	REVISION
A	9/21/2011	CJ	ISSUED FOR CONSTRUCTION



NOTES:

- ACCESS ROUTE
- EXISTING LINE CROSSINGS
- ALIGNMENT

* CROSSARMS SPACING INCREASED TO 28' - 6"

DRAWN: _____

APPROVED: _____

MONTANA-DAKOTA UTILITIES CO.

DATE: _____

SHEET: 29 of 29