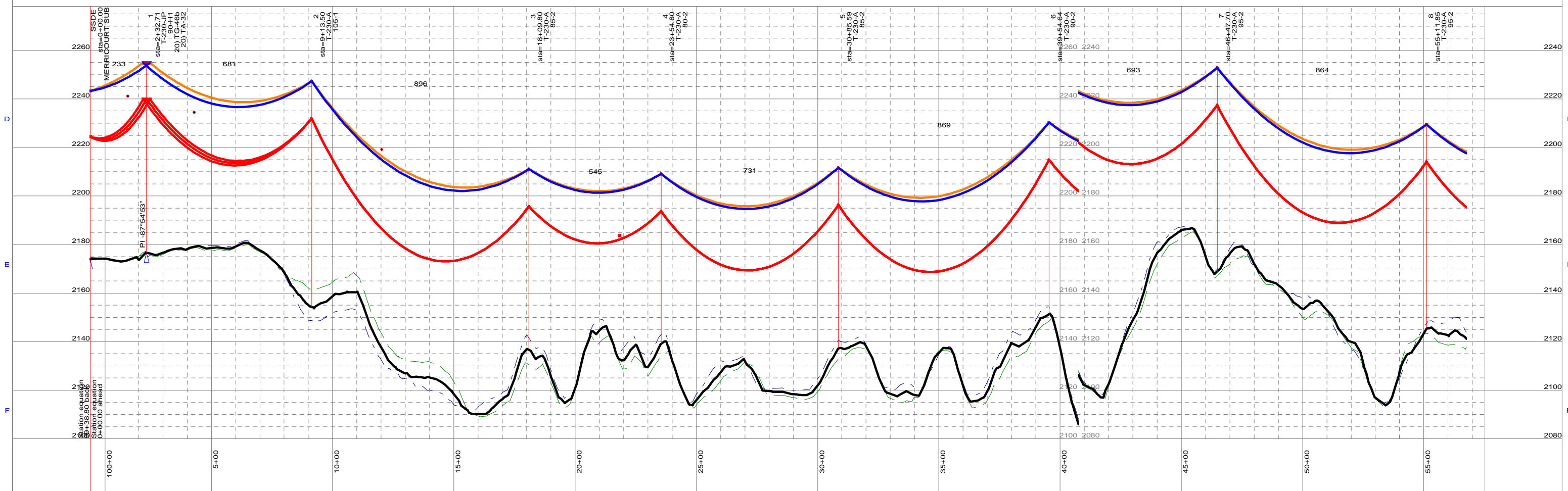
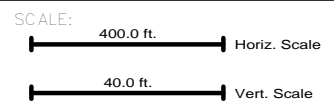




Section 3
T130N R67W



NO.	DATE	BY	REVISION
A	9/23/2011	CJ	ISSUED FOR CONSTRUCTION



- NOTES:
- ACCESS ROUTE
 - EXISTING LINE CROSSINGS
 - ALIGNMENT
- * CROSSARMS SPACING INCREASED TO 28' - 6"

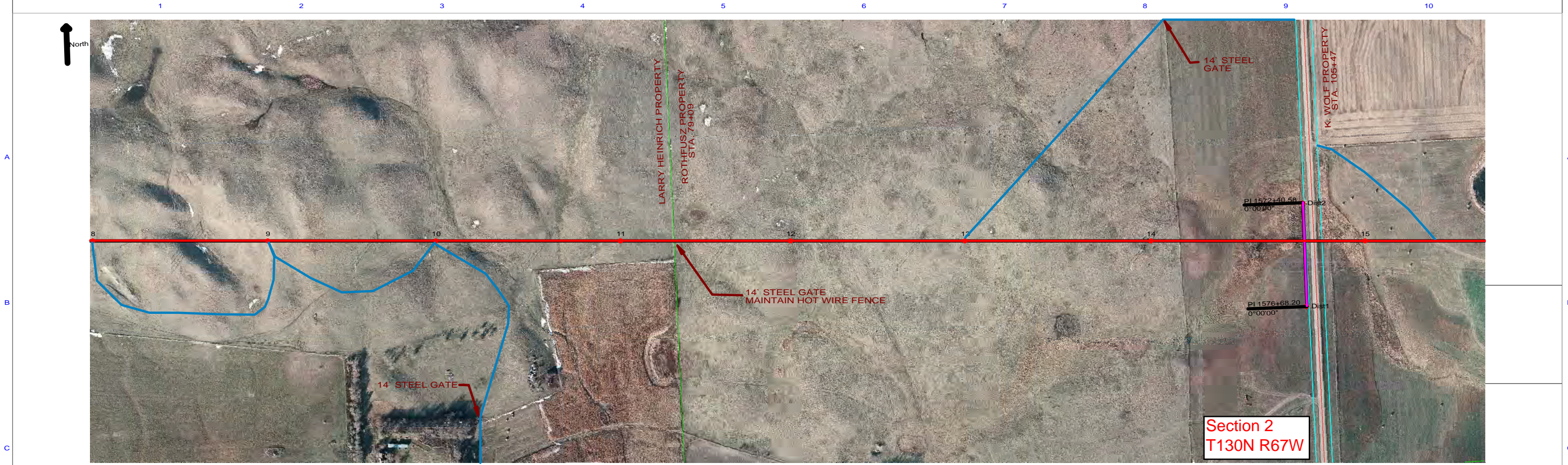
DRAWN: _____

APPROVED: _____

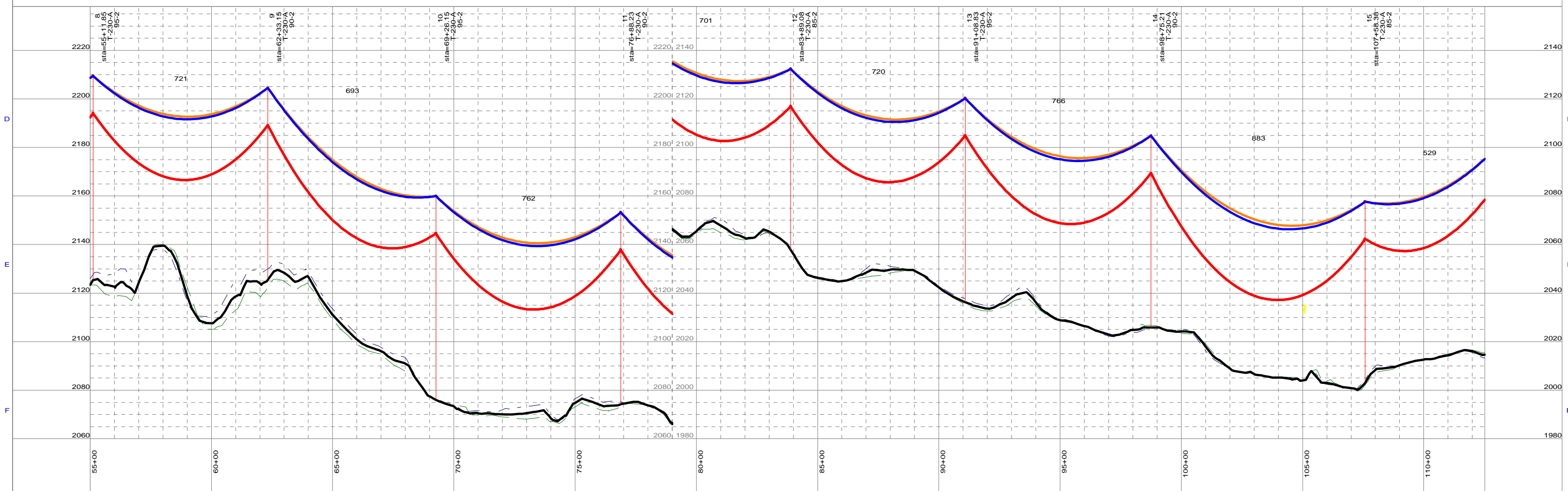
MONTANA-DAKOTA UTILITIES CO.

DATE: _____

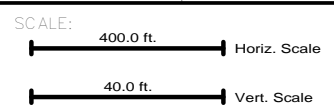
SHEET: 1 of 29



Section 2
T130N R67W



NO.	DATE	BY	REVISION
A	9/23/2011	CJ	ISSUED FOR CONSTRUCTION



- NOTES:
- ACCESS ROUTE
 - EXISTING LINE CROSSINGS
 - ALIGNMENT
- * CROSSARMS SPACING INCREASED TO 28' - 6"

DRAWN: _____

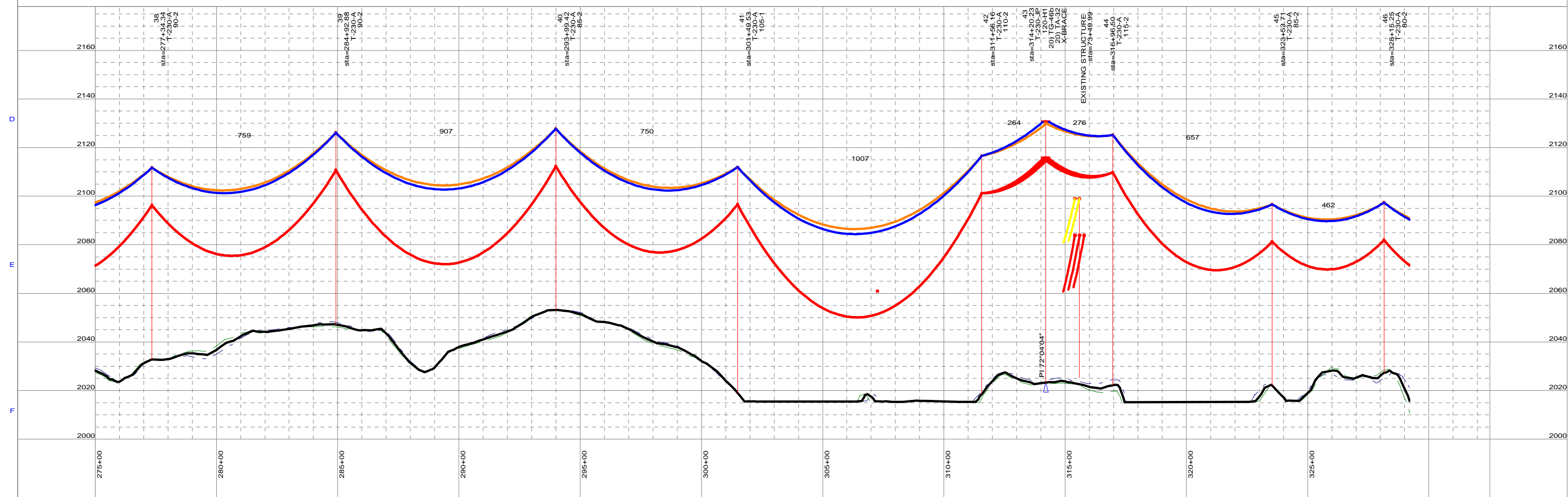
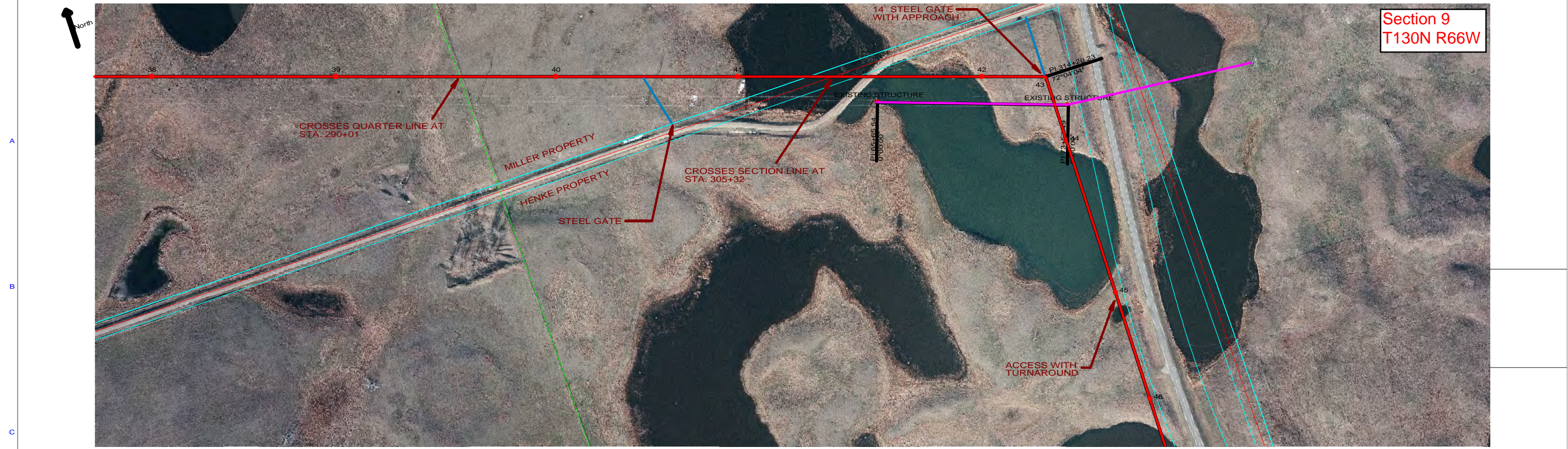
APPROVED: _____

MONTANA-DAKOTA UTILITIES CO.

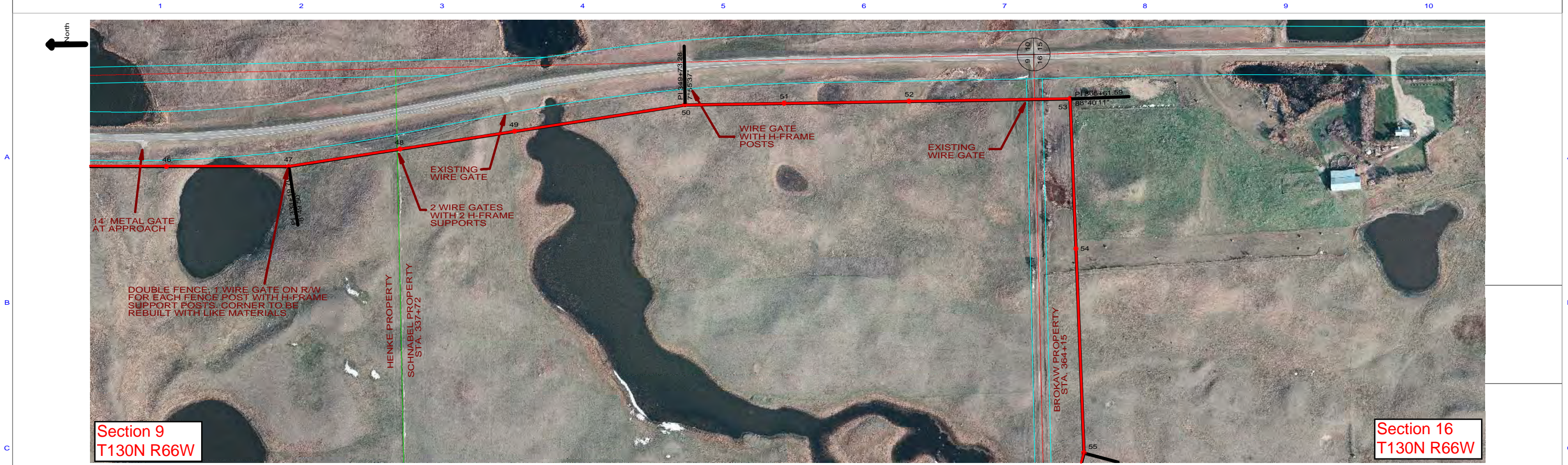
DATE: _____

SHEET: 2 of 29

Section 9
T130N R66W

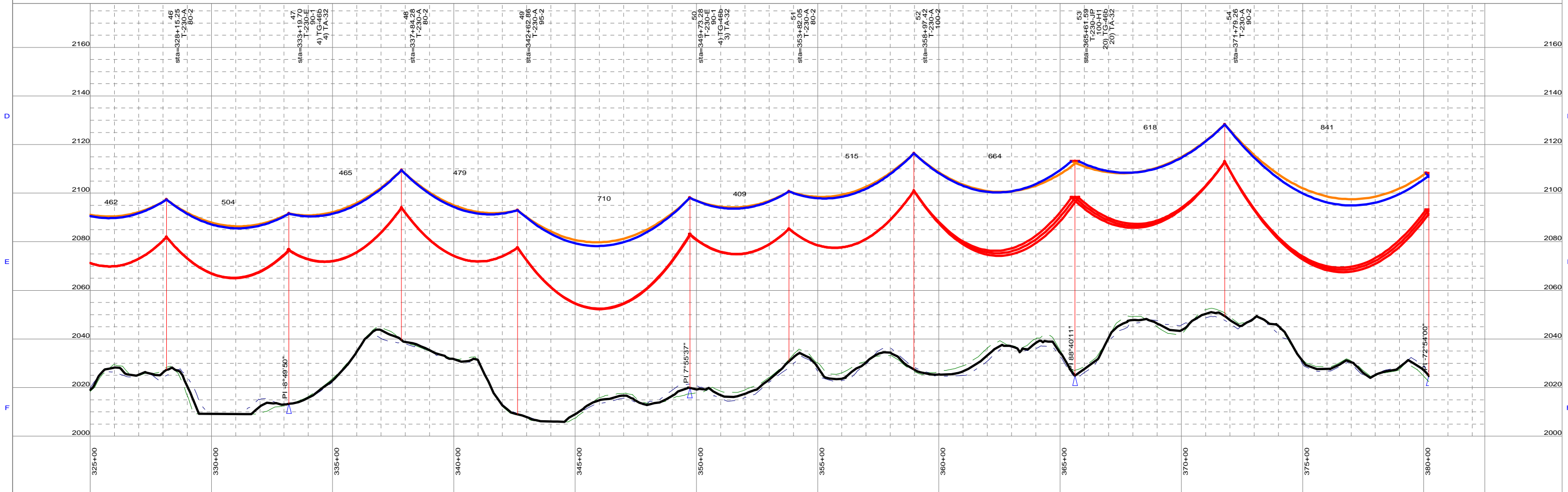


NO: DATE: BY: REVISION:				NO: DATE: BY: REVISION:				SCALE: 400.0 ft. Horiz. Scale 40.0 ft. Vert. Scale		NOTES: — ACCESS ROUTE — EXISTING LINE CROSSINGS — ALIGNMENT * CROSSARMS SPACING INCREASED TO 28' - 6"		DRAWN: APPROVED:		MONTANA-DAKOTA UTILITIES CO.		DATE: SHEET: 6 of 29	
----------------------------------	--	--	--	----------------------------------	--	--	--	--	--	---	--	---------------------	--	-------------------------------------	--	-------------------------	--



Section 9
T130N R66W

Section 16
T130N R66W



SCALE:
 400.0 ft. Horiz. Scale
 40.0 ft. Vert. Scale

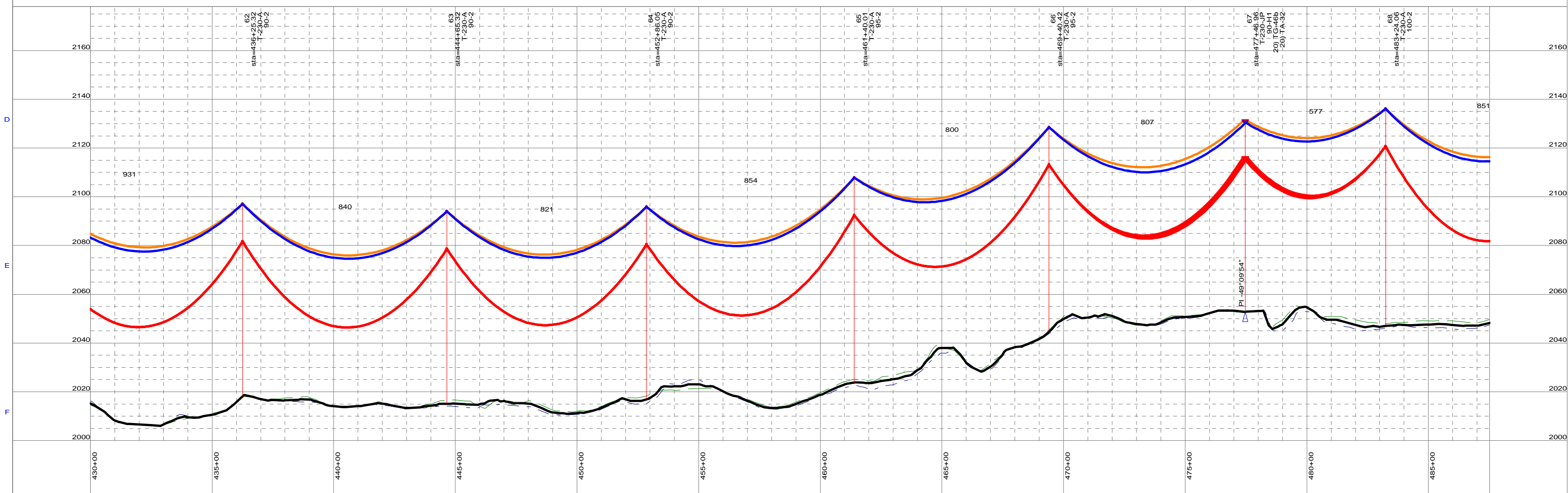
NOTES:
 ACCESS ROUTE
 EXISTING LINE CROSSINGS
 ALIGNMENT
 * CROSSARMS SPACING INCREASED TO 28' - 6"

DRAWN:
 APPROVED:

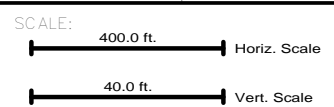
**MONTANA-DAKOTA
 UTILITIES CO.**

DATE:
 SHEET:
 7 of 29

NO.	DATE	BY	REVISION
A	9/23/2011	CJ	ISSUED FOR CONSTRUCTION



NO:	DATE:	BY:	REVISION:
A	9/23/2011	CJ	ISSUED FOR CONSTRUCTION



NOTES:

- ACCESS ROUTE
- EXISTING LINE CROSSINGS
- ALIGNMENT

* CROSSARMS SPACING INCREASED TO 28' - 6"

DRAWN:

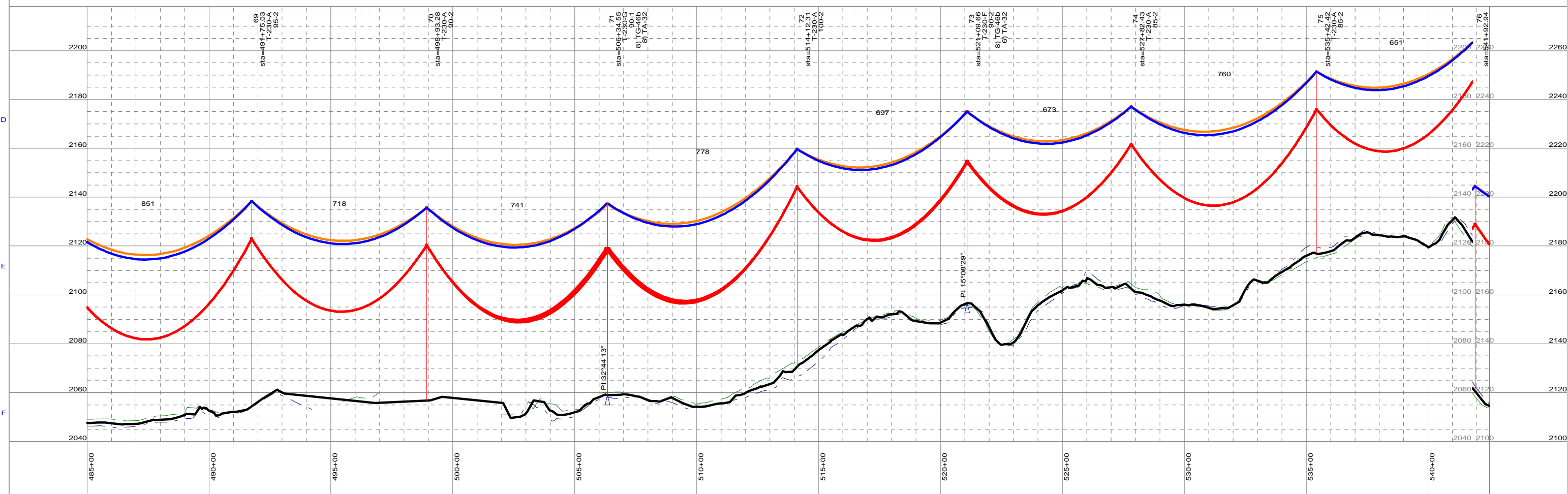
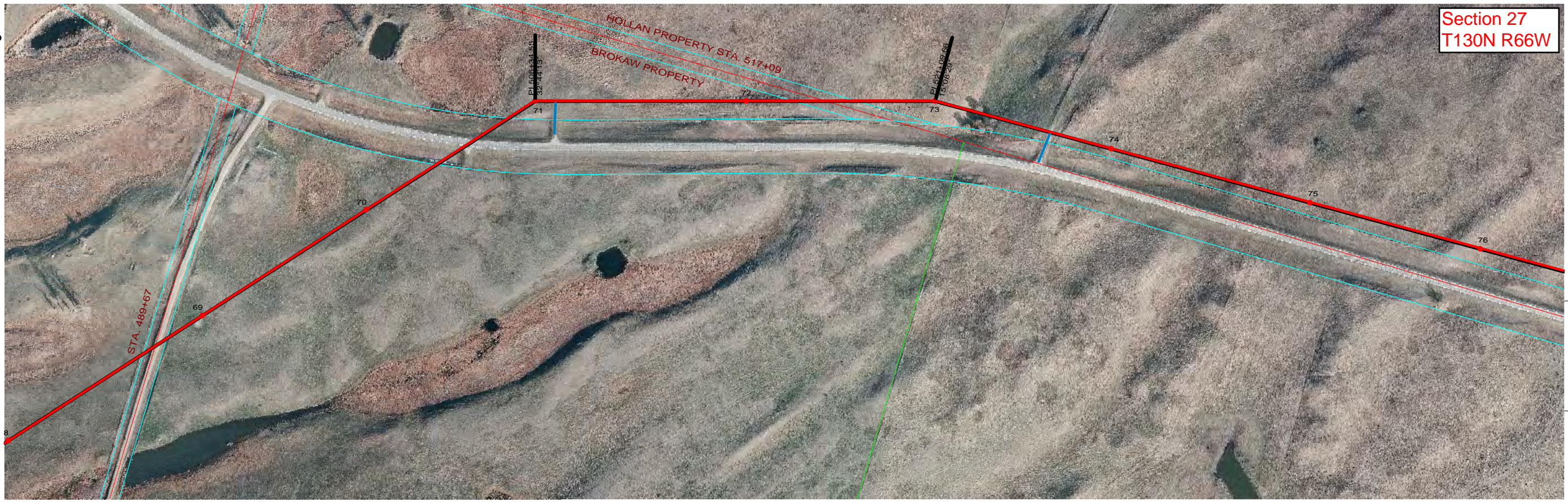
APPROVED:

MONTANA-DAKOTA UTILITIES CO.

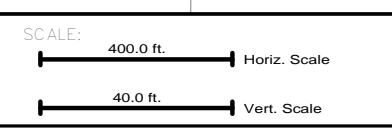
DATE:

SHEET: 9 of 29

Section 27
T130N R66W



NO.	DATE	BY	REVISION
A	9/23/2011	CJ	ISSUED FOR CONSTRUCTION



NOTES:

- ACCESS ROUTE
- EXISTING LINE CROSSINGS
- ALIGNMENT

* CROSSARMS SPACING INCREASED TO 28' - 6"

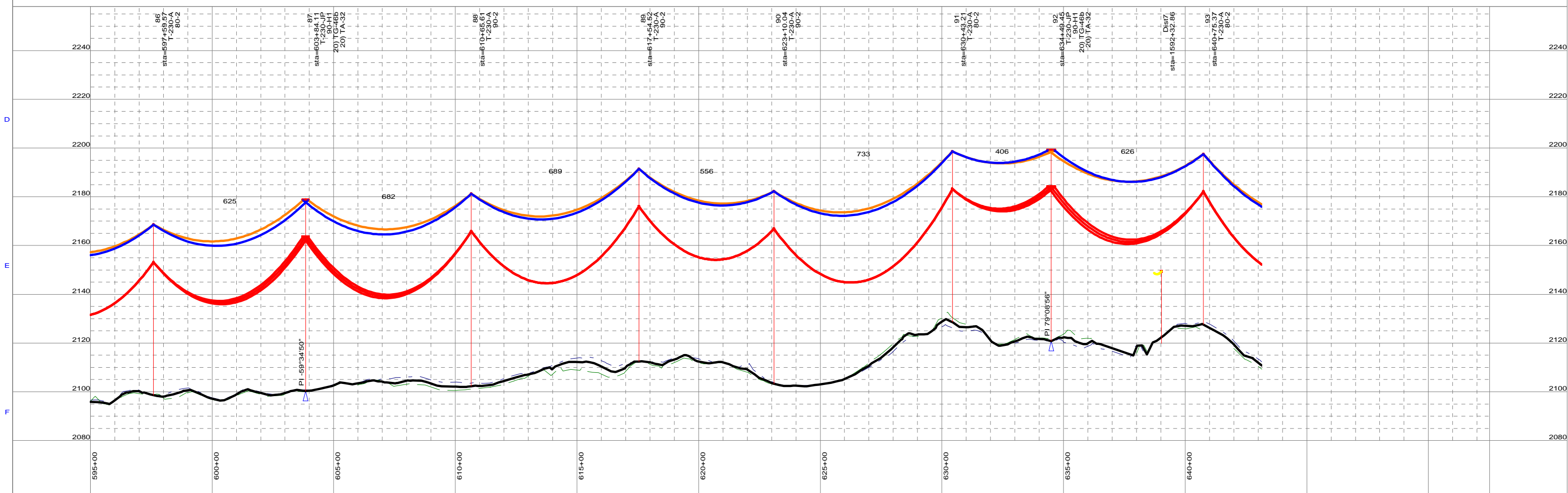
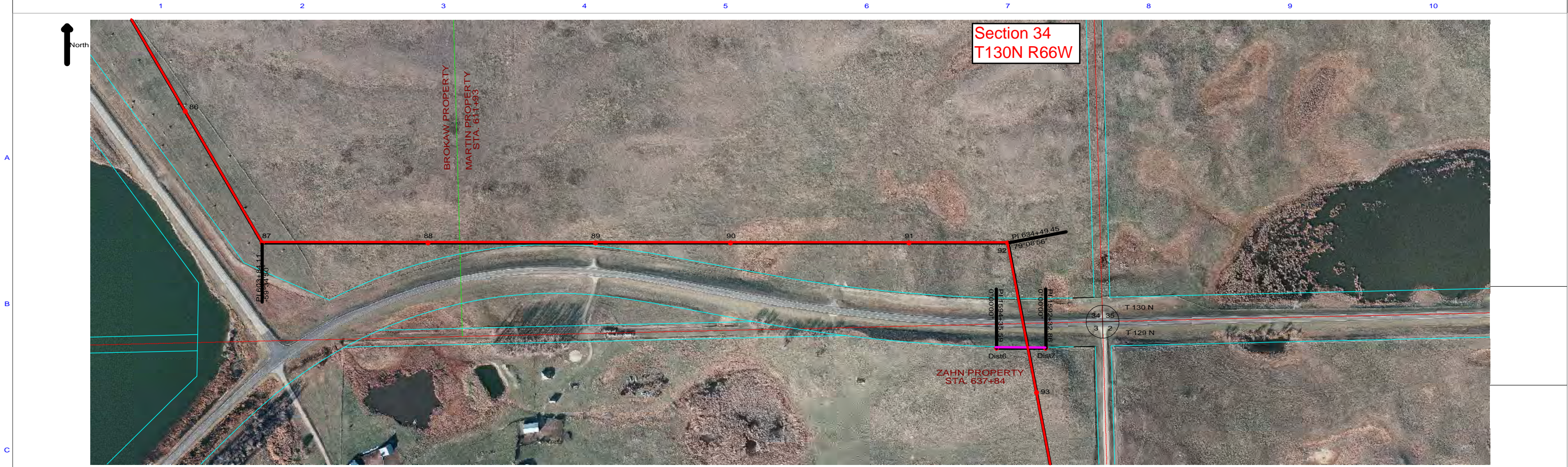
DRAWN: _____

APPROVED: _____

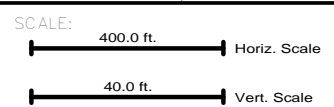
MONTANA-DAKOTA UTILITIES CO.

DATE: _____

SHEET: 10 of 29



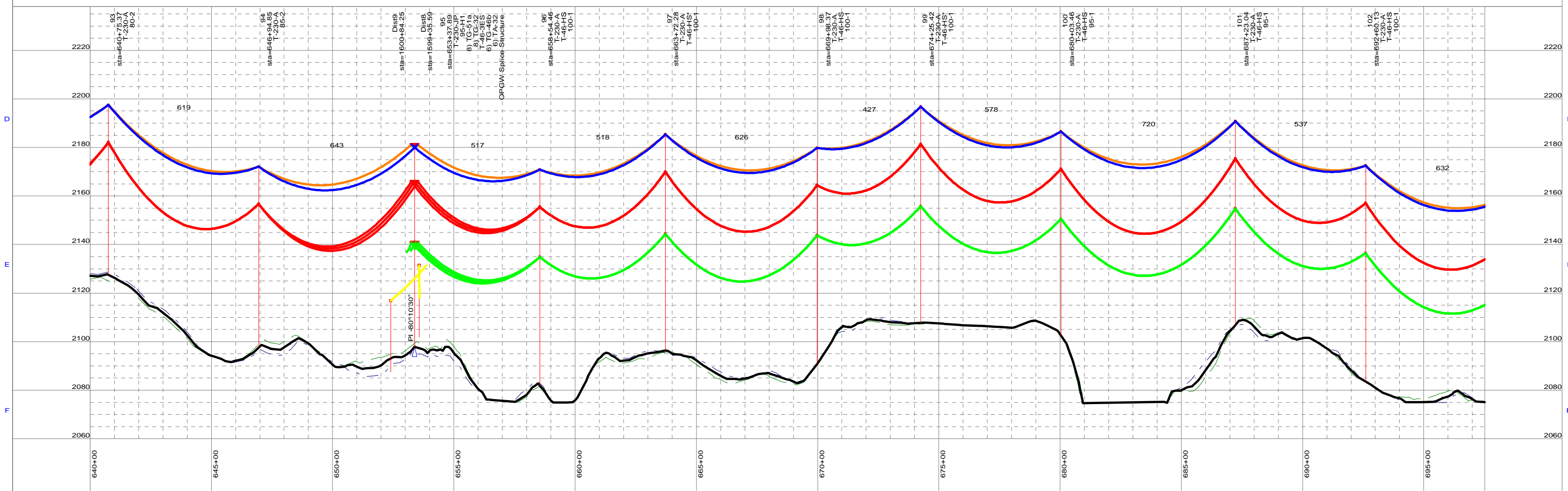
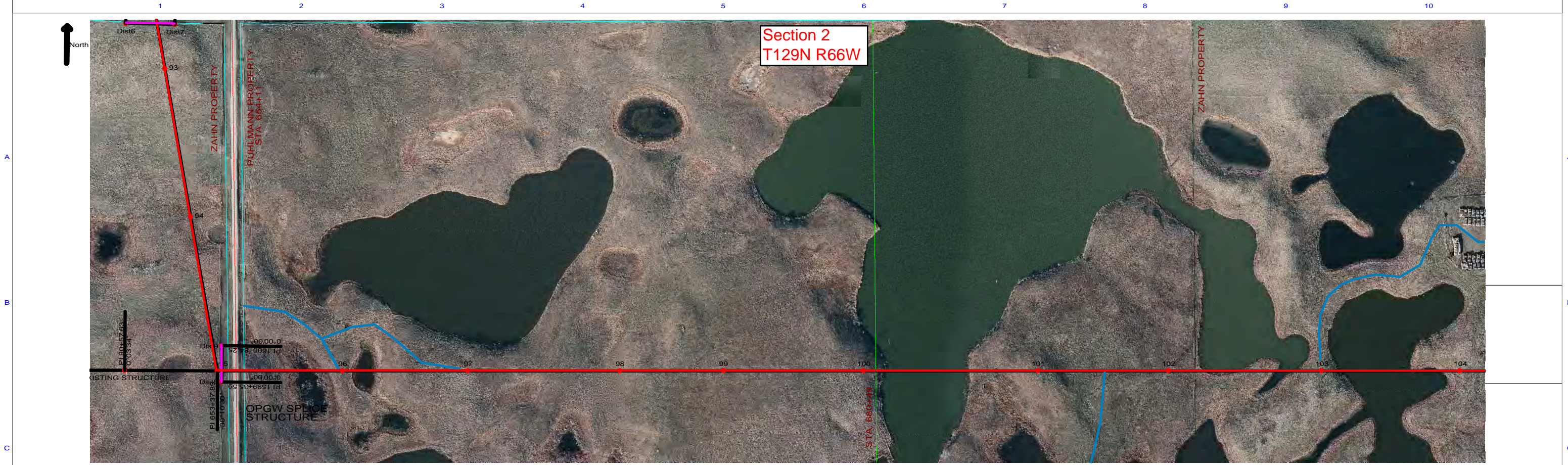
NO.	DATE	BY	REVISION
A	9/23/2011	CJ	ISSUED FOR CONSTRUCTION



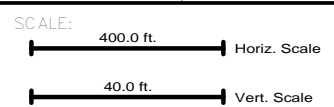
- NOTES:
- ACCESS ROUTE
 - EXISTING LINE CROSSINGS
 - ALIGNMENT
- * CROSSARMS SPACING INCREASED TO 28' - 6"

DRAWN:
APPROVED:

MONTANA-DAKOTA UTILITIES CO.



NO.	DATE	BY	REVISION
A	9/23/2011	CJ	ISSUED FOR CONSTRUCTION



NOTES:

- ACCESS ROUTE
- EXISTING LINE CROSSINGS
- ALIGNMENT

* CROSSARMS SPACING INCREASED TO 28' - 6"

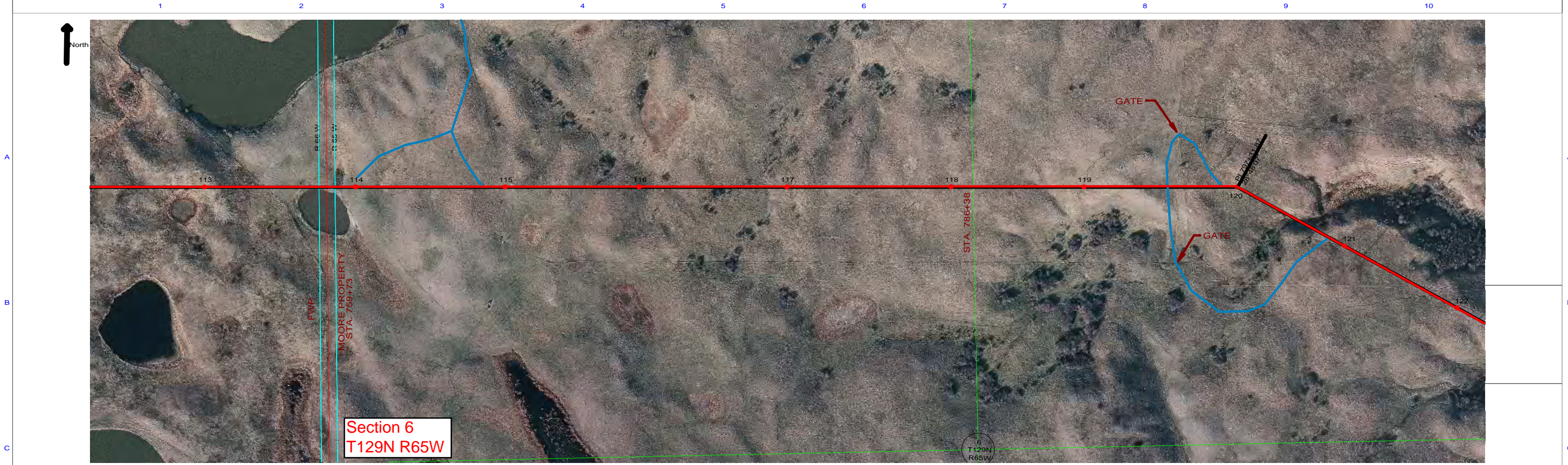
DRAWN: _____

APPROVED: _____

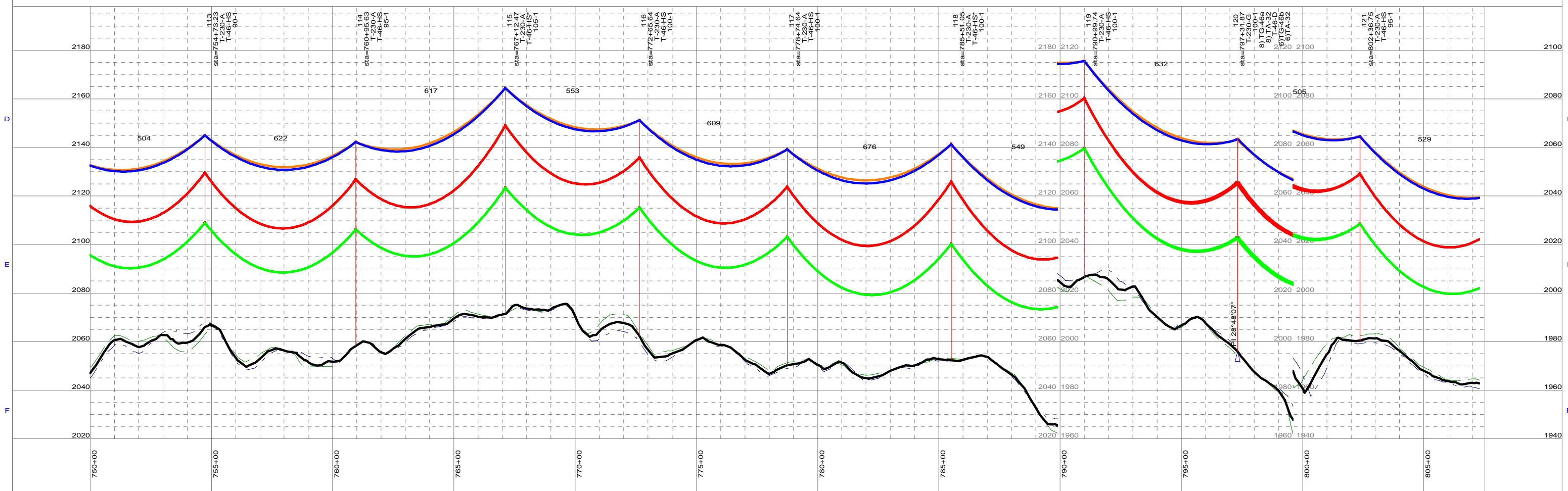
MONTANA-DAKOTA UTILITIES CO.

DATE: _____

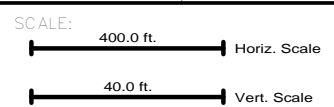
SHEET: 13 of 29



Section 6
T129N R65W



NO.	DATE:	BY:	REVISION:
A	9/23/2011	CJ	ISSUED FOR CONSTRUCTION



- NOTES:
- ACCESS ROUTE
 - EXISTING LINE CROSSINGS
 - ALIGNMENT
- * CROSSARMS SPACING INCREASED TO 28' - 6"

DRAWN:

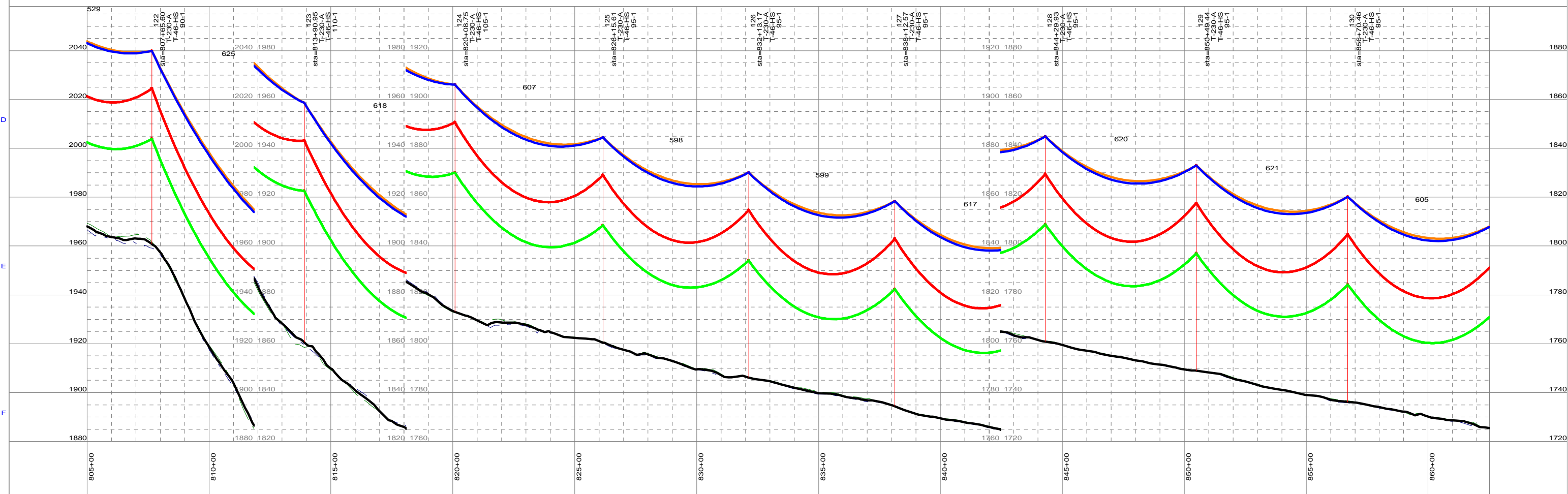
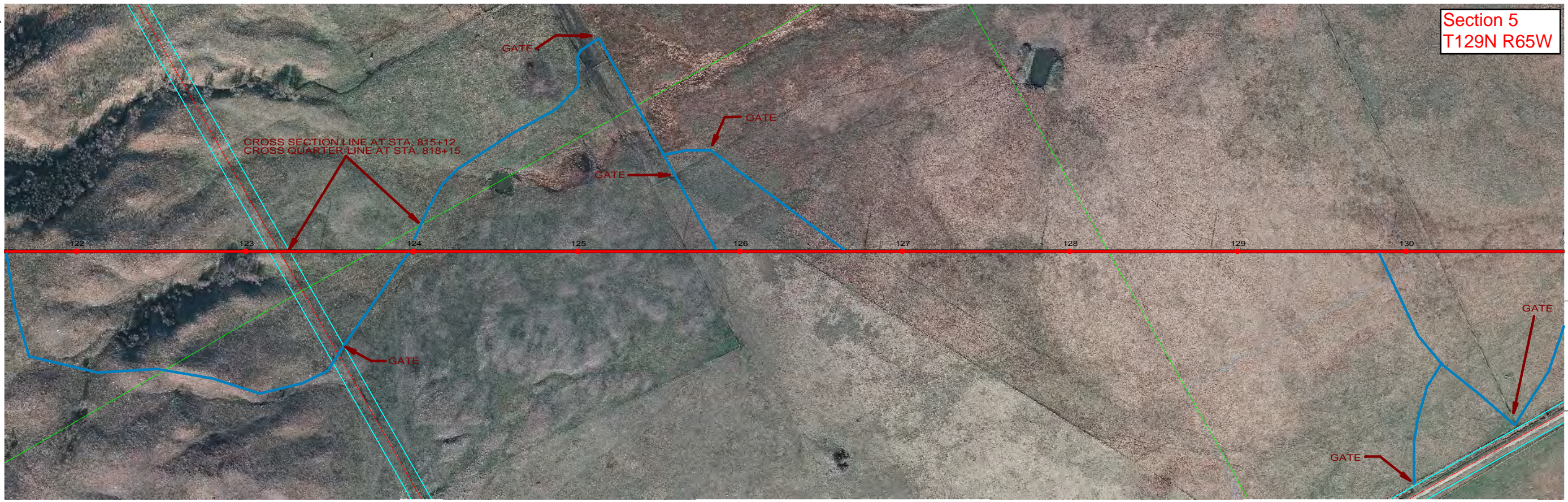
APPROVED:

MONTANA-DAKOTA UTILITIES CO.

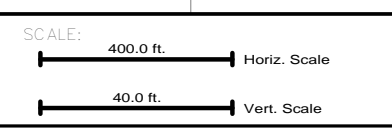
DATE:

SHEET: 15 of 29

Section 5
T129N R65W



NO:	DATE:	BY:	REVISION:



NOTES:

- ACCESS ROUTE
- EXISTING LINE CROSSINGS
- ALIGNMENT

* CROSSARMS SPACING INCREASED TO 28' - 6"

DRAWN:

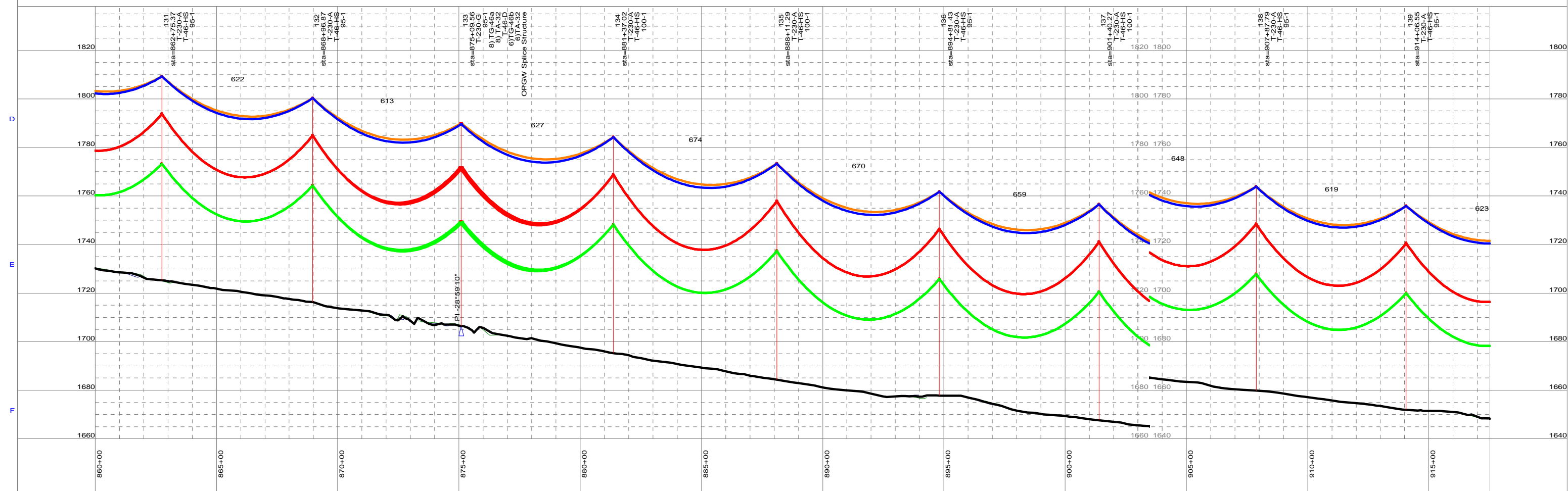
APPROVED:

MONTANA-DAKOTA UTILITIES CO.

DATE:

SHEET: 16 of 29

Section 9
T129N R65W



NO:	DATE:	BY:	REVISION:	NO:	DATE:	BY:	REVISION:		
				A	9/23/2011	CJ	ISSUED FOR CONSTRUCTION		

SCALE:

400.0 ft. Horiz. Scale

40.0 ft. Vert. Scale

NOTES:

- ACCESS ROUTE
- EXISTING LINE CROSSINGS
- ALIGNMENT

* CROSSARMS SPACING INCREASED TO 28' - 6"

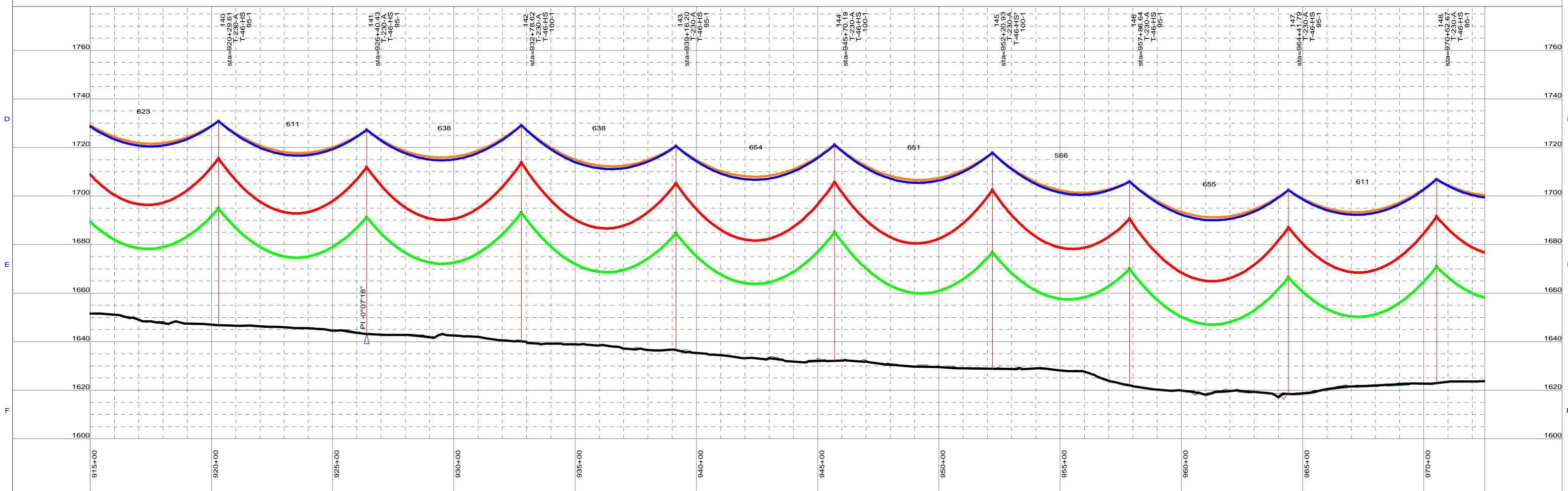
DRAWN:

APPROVED:

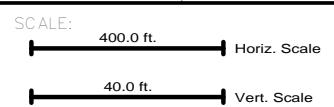
MONTANA-DAKOTA UTILITIES CO.

DATE:

SHEET: 17 of 29



NO:	DATE:	BY:	REVISION:
A	9/23/2011	CJ	ISSUED FOR CONSTRUCTION
NO:	DATE:	BY:	REVISION:



NOTES:

- ACCESS ROUTE
- EXISTING LINE CROSSINGS
- ALIGNMENT

* CROSSARMS SPACING INCREASED TO 28' - 6"

DRAWN:

APPROVED:

MONTANA-DAKOTA UTILITIES CO.

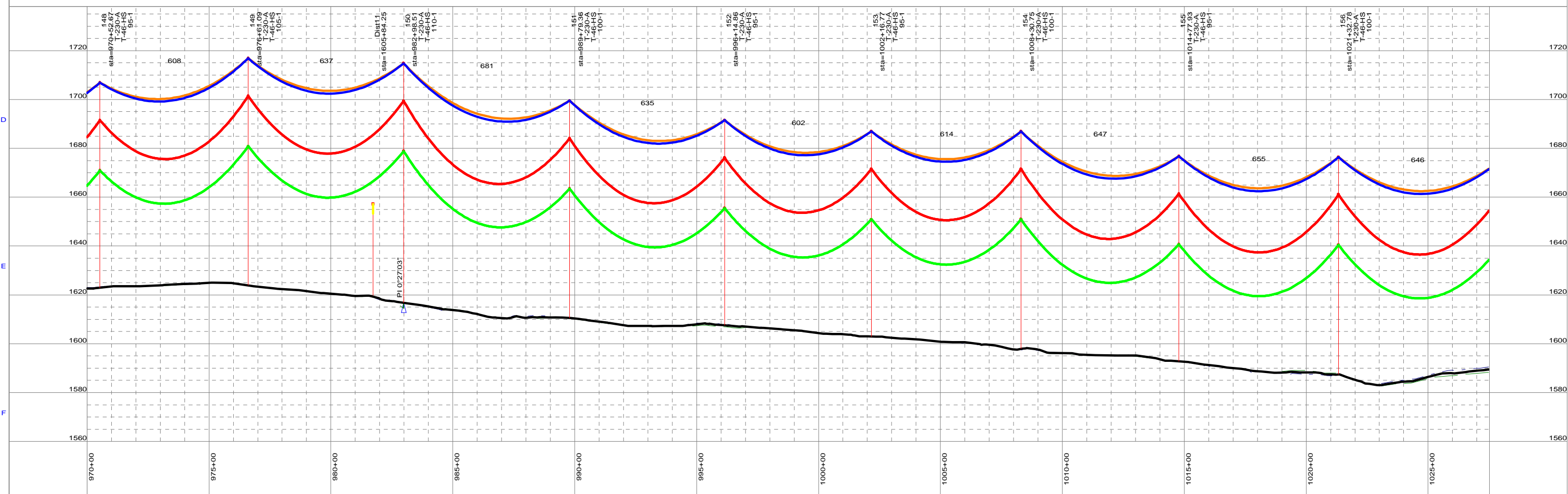
DATE:

SHEET: 18 of 29

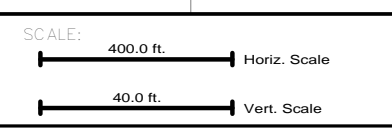
1 2 3 4 5 6 7 8 9 10



Section 11
T129N R65W



NO:	DATE:	BY:	REVISION:



NOTES:

- ACCESS ROUTE
- EXISTING LINE CROSSINGS
- ALIGNMENT

* CROSSARMS SPACING INCREASED TO 28' - 6"

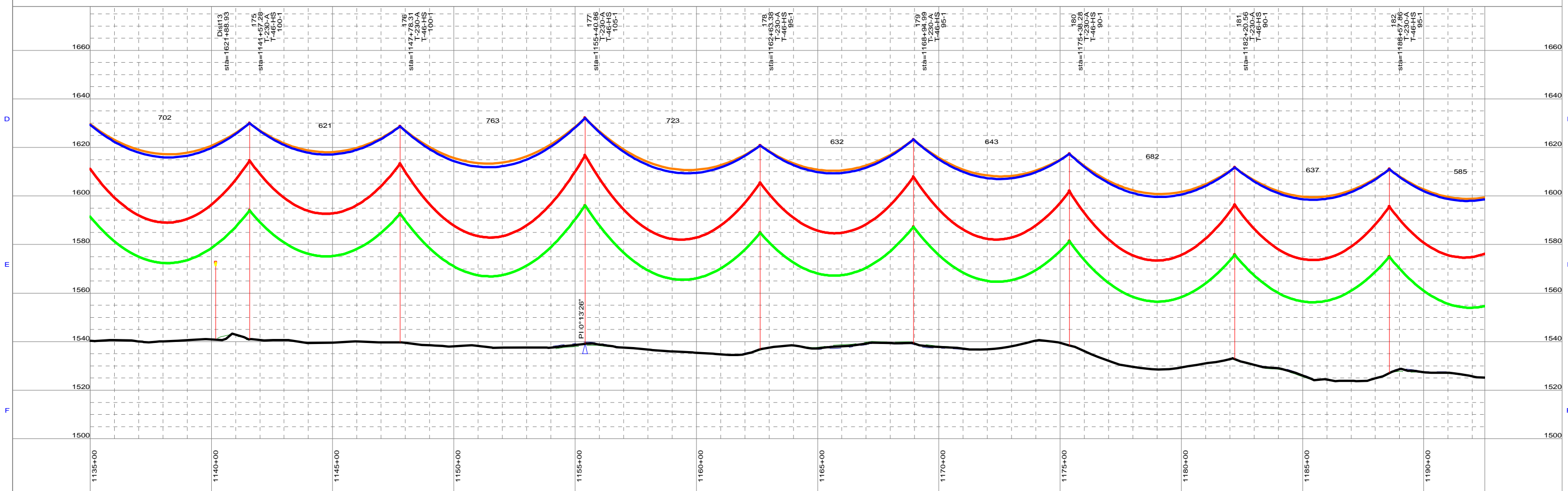
DRAWN: _____

APPROVED: _____

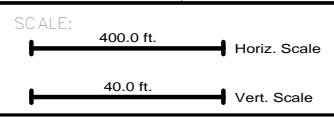
MONTANA-DAKOTA UTILITIES CO.

DATE: _____

SHEET: 19 of 29



NO:	DATE:	BY:	REVISION:



NOTES:

- ACCESS ROUTE
- EXISTING LINE CROSSINGS
- ALIGNMENT

* CROSSARMS SPACING INCREASED TO 28' - 6"

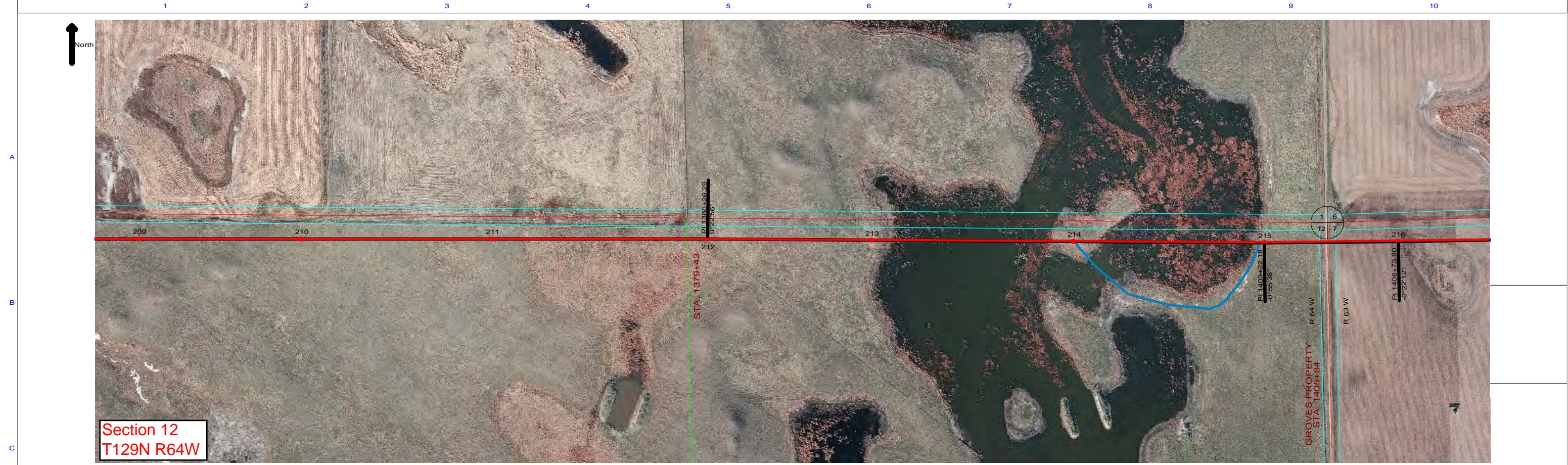
DRAWN:

APPROVED:

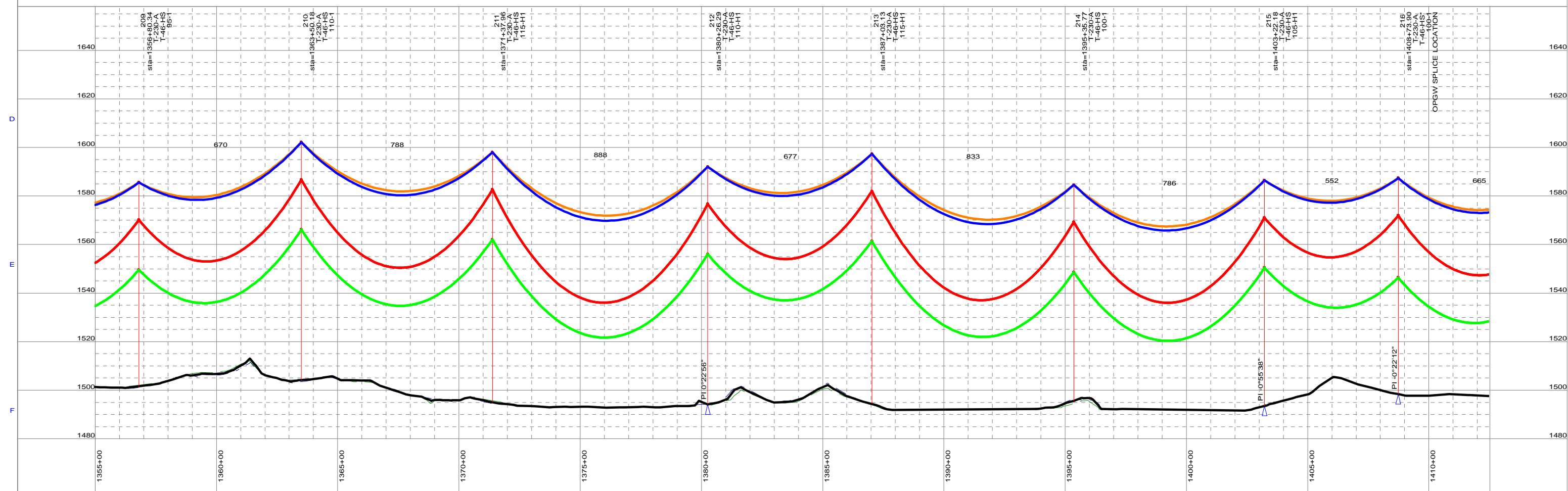
MONTANA-DAKOTA UTILITIES CO.

DATE:

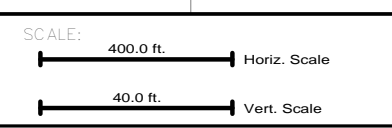
SHEET: 22 of 29



Section 12
T129N R64W



NO.	DATE	BY	REVISION
A	9/23/2011	CJ	ISSUED FOR CONSTRUCTION



NOTES:
 — ACCESS ROUTE
 — EXISTING LINE CROSSINGS
 — ALIGNMENT
 * CROSSARMS SPACING INCREASED TO 28' - 6"

DRAWN: _____
 APPROVED: _____

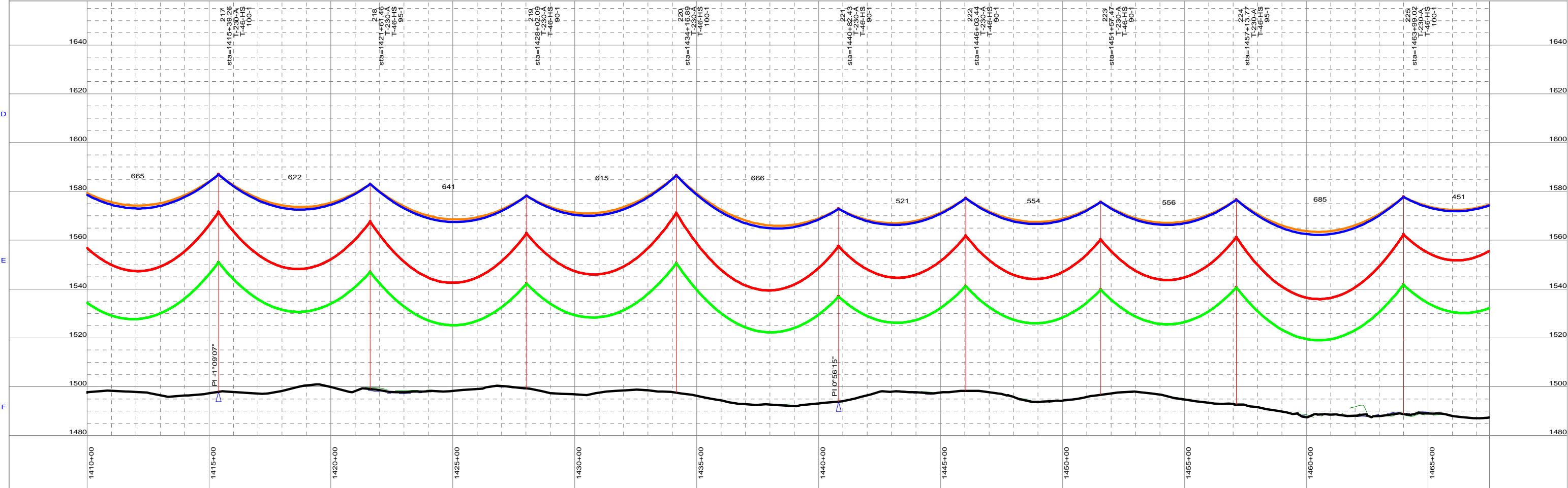
MONTANA-DAKOTA UTILITIES CO.

DATE: _____
 SHEET: 26 of 29

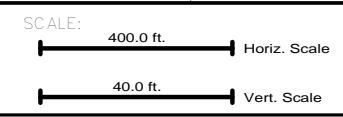
1 2 3 4 5 6 7 8 9 10



Section 7
T129N R63W



NO:	DATE:	BY:	REVISION:
A	9/23/2011	CJ	ISSUED FOR CONSTRUCTION



NOTES:

- ACCESS ROUTE
- EXISTING LINE CROSSINGS
- ALIGNMENT

* CROSSARMS SPACING INCREASED TO 28' - 6"

DRAWN:

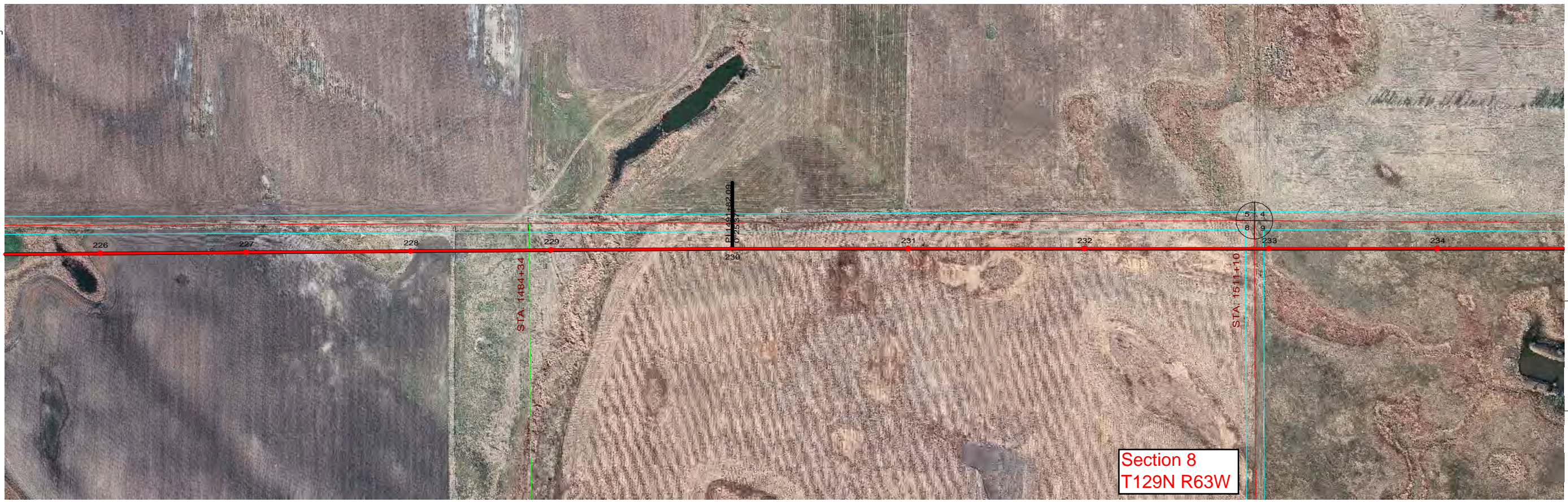
APPROVED:

**MONTANA-DAKOTA
UTILITIES CO.**

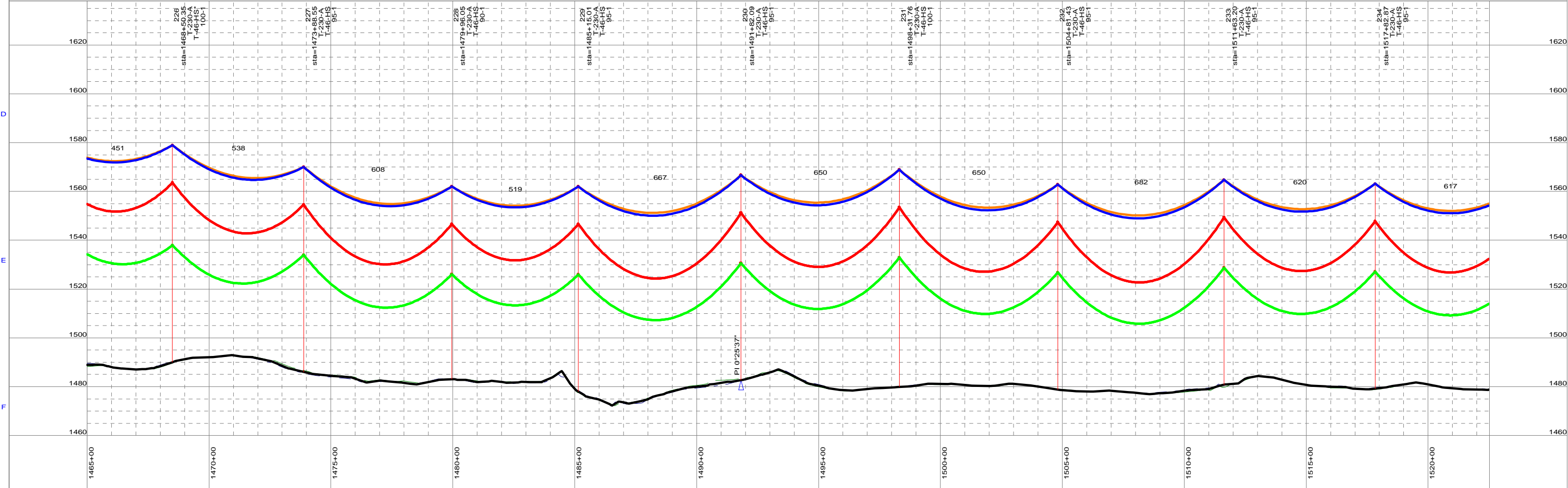
DATE:

SHEET: 27 of 29

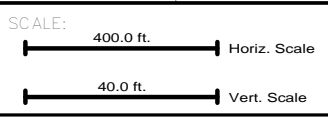
1 2 3 4 5 6 7 8 9 10



Section 8
T129N R63W



NO:	DATE:	BY:	REVISION:
A	9/23/2011	CJ	ISSUED FOR CONSTRUCTION



NOTES:

- ACCESS ROUTE
- EXISTING LINE CROSSINGS
- ALIGNMENT

* CROSSARMS SPACING INCREASED TO 28' - 6"

DRAWN:
APPROVED:

**MONTANA-DAKOTA
UTILITIES CO.**

DATE:
SHEET: 28 of 29

