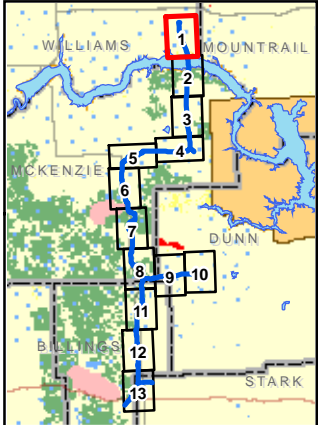


- Legend**
- Original Route (6-21-11)
 - Revised Route (9-20-11)
 - Original Receipt Point (6-21-11)
 - Revised Receipt Point (9-20-11)
 - Original Corridor (6-21-11)
 - Revised Corridor (9-20-11)
 - Surface Water**
 - NWI Wetlands
 - Intermittent Stream
 - Perennial Stream
 - Surface Ownership**
 - Army Corps of Engineers
 - Bureau of Land Management
 - National Park Service
 - ND State Land Department
 - ND Game and Fish WMA
 - ND Game and Fish PLOTS
 - Private
 - US Forest Service



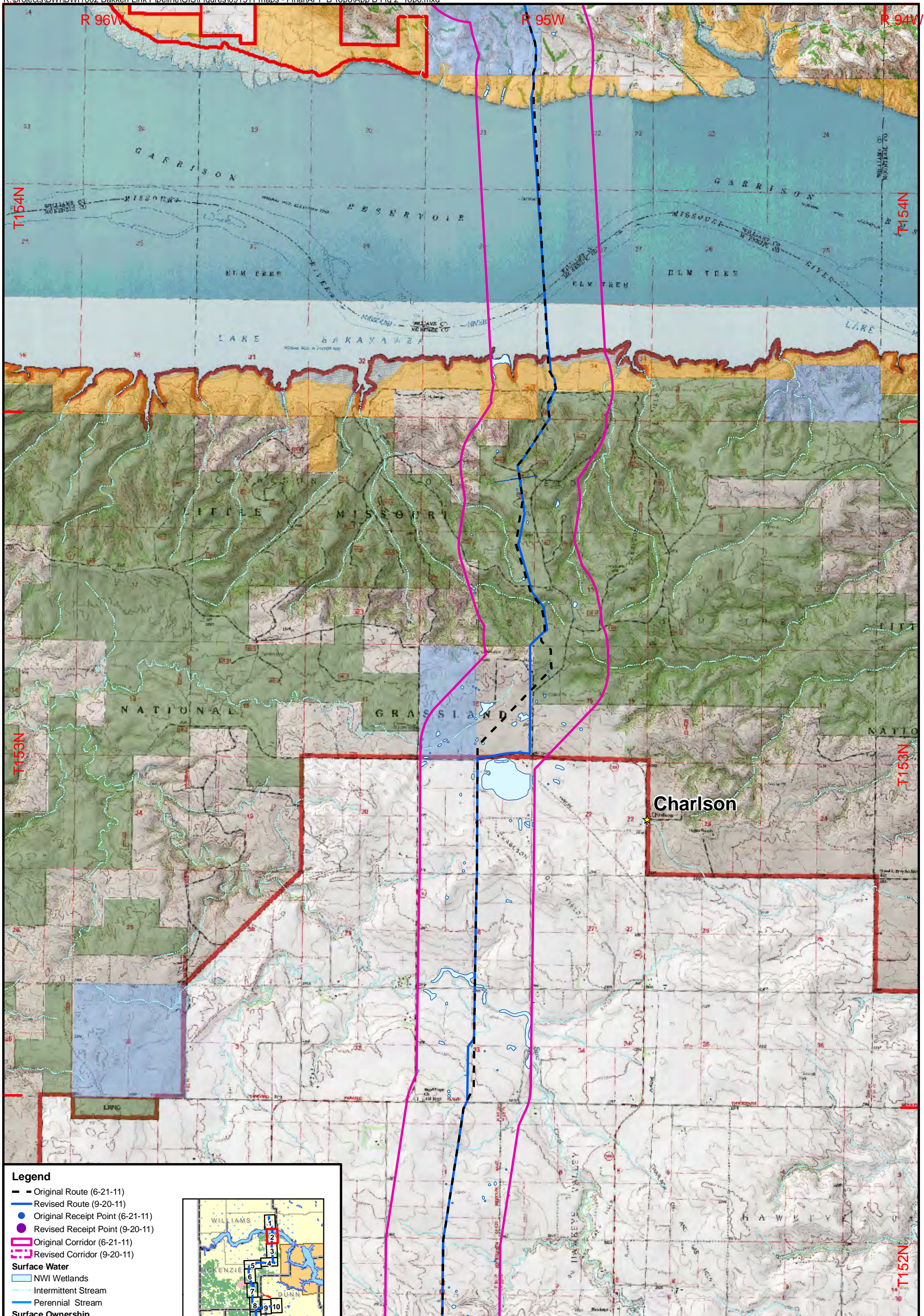
1:48,000
 1 inch = 4,000 feet
 0 2,000 4,000 Feet
 Base Map: USGS Stanley 100K Topographic Image



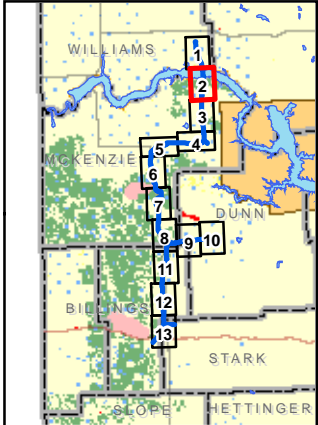
BakkenLink Pipeline LLC

Date: September 2011 Rev: 02

**Appendix B
 Figure 1
 Topography &
 Managed Lands**



- Legend**
- Original Route (6-21-11)
 - Revised Route (9-20-11)
 - Original Receipt Point (6-21-11)
 - Revised Receipt Point (9-20-11)
 - Original Corridor (6-21-11)
 - Revised Corridor (9-20-11)
 - Surface Water**
 - NWI Wetlands
 - Intermittent Stream
 - Perennial Stream
 - Surface Ownership**
 - Army Corps of Engineers
 - Bureau of Land Management
 - National Park Service
 - ND State Land Department
 - ND Game and Fish WMA
 - ND Game and Fish PLOTS
 - Private
 - US Forest Service



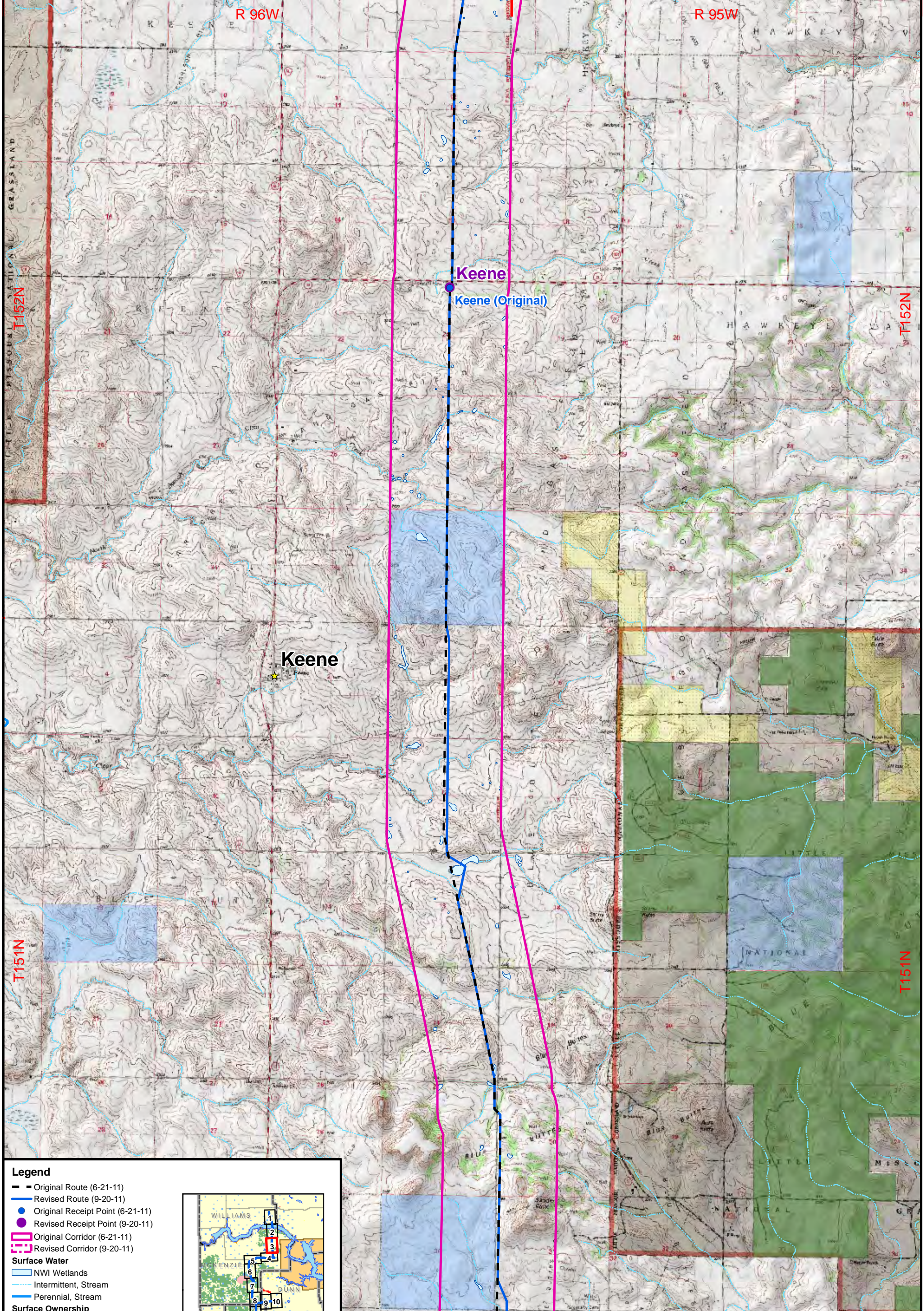
1:48,000
 1 inch = 4,000 feet
 0 2,000 4,000 Feet
 Base Map: USGS Stanley 100K Topographic Image



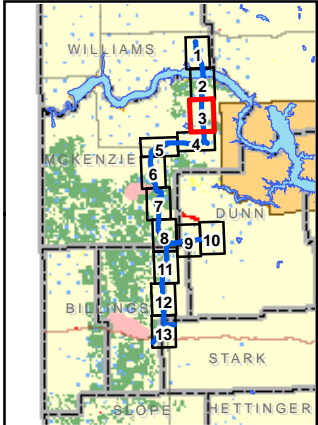
BakkenLink Pipeline LLC

Date: September 2011 Rev: 02

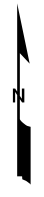
**Appendix B
 Figure 2
 Topography &
 Managed Lands**



- Legend**
- Original Route (6-21-11)
 - Revised Route (9-20-11)
 - Original Receipt Point (6-21-11)
 - Revised Receipt Point (9-20-11)
 - Original Corridor (6-21-11)
 - Revised Corridor (9-20-11)
 - Surface Water**
 - NWI Wetlands
 - Intermittent, Stream
 - Perennial, Stream
 - Surface Ownership**
 - Army Corps of Engineers
 - Bureau of Land Management
 - National Park Service
 - ND State Land Department
 - ND Game and Fish WMA
 - ND Game and Fish PLOTS
 - Private
 - US Forest Service



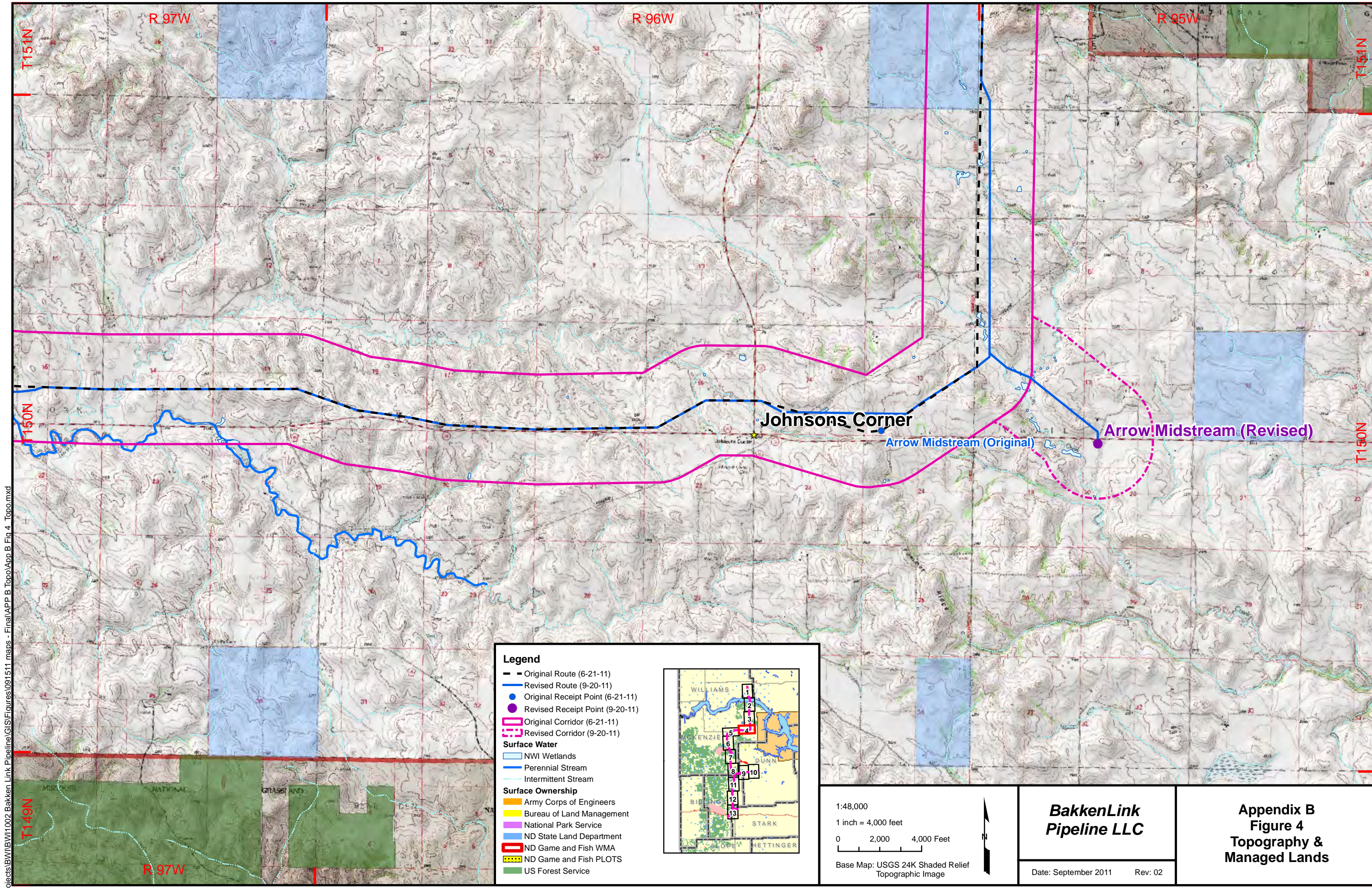
1:48,000
 1 inch = 4,000 feet
 0 2,000 4,000 Feet
 Base Map: USGS Stanley 100K
 Topographic Image



**BakkenLink
 Pipeline LLC**

Date: September 2011 Rev: 02

**Appendix B
 Figure 3
 Topography &
 Managed Lands**



k:\projects\BakkenLink Pipeline\GIS\Figures\091511_maps - Final\APP B_Topo\APP B_Fig 4_Topo.mxd

Legend

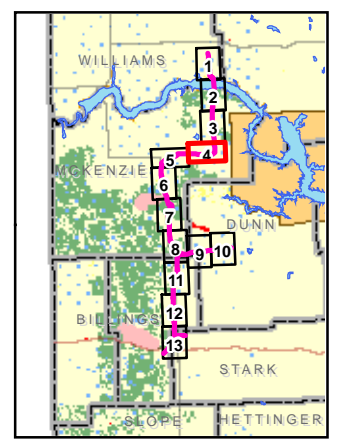
- Original Route (6-21-11)
- Revised Route (9-20-11)
- Original Receipt Point (6-21-11)
- Revised Receipt Point (9-20-11)
- Original Corridor (6-21-11)
- - - Revised Corridor (9-20-11)

Surface Water

- NWI Wetlands
- Perennial Stream
- Intermittent Stream

Surface Ownership

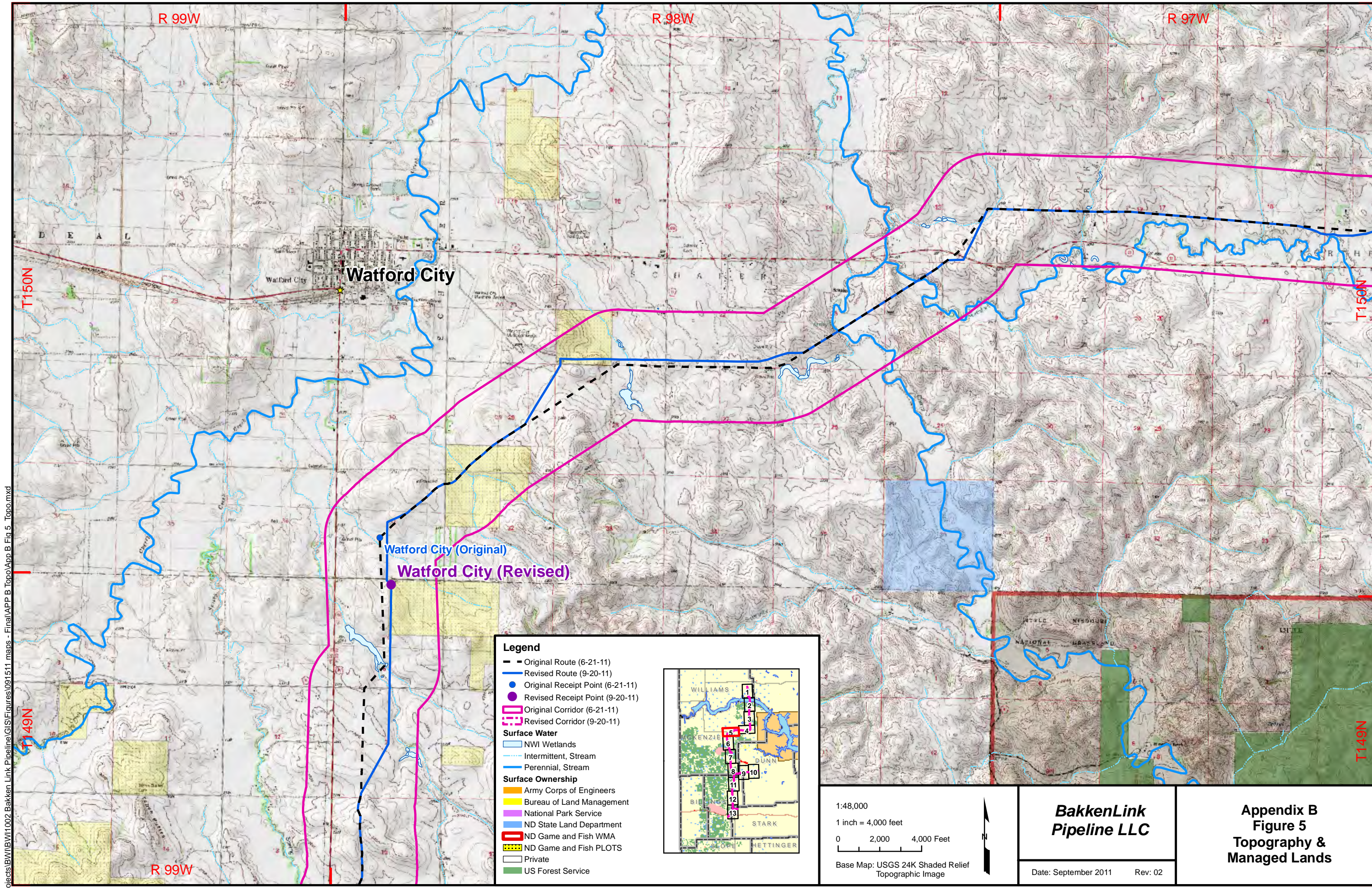
- Army Corps of Engineers
- Bureau of Land Management
- National Park Service
- ND State Land Department
- ND Game and Fish WMA
- ND Game and Fish PLOTS
- US Forest Service



1:48,000
 1 inch = 4,000 feet
 0 2,000 4,000 Feet
 Base Map: USGS 24K Shaded Relief Topographic Image

BakkenLink Pipeline LLC
 Date: September 2011 Rev: 02

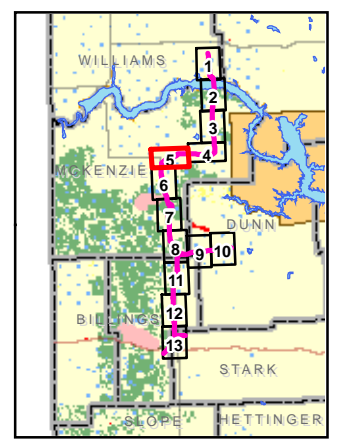
**Appendix B
 Figure 4
 Topography &
 Managed Lands**



k:\projects\BWI\BWI1002 Bakken Link Pipeline\GIS\Figures\091511 maps - Final\APP B Topo\APP B Fig 5 Topo.mxd

Legend

- Original Route (6-21-11)
- Revised Route (9-20-11)
- Original Receipt Point (6-21-11)
- Revised Receipt Point (9-20-11)
- Original Corridor (6-21-11)
- Revised Corridor (9-20-11)
- Surface Water**
- NWI Wetlands
- Intermittent, Stream
- Perennial, Stream
- Surface Ownership**
- Army Corps of Engineers
- Bureau of Land Management
- National Park Service
- ND State Land Department
- ND Game and Fish WMA
- ND Game and Fish PLOTS
- Private
- US Forest Service



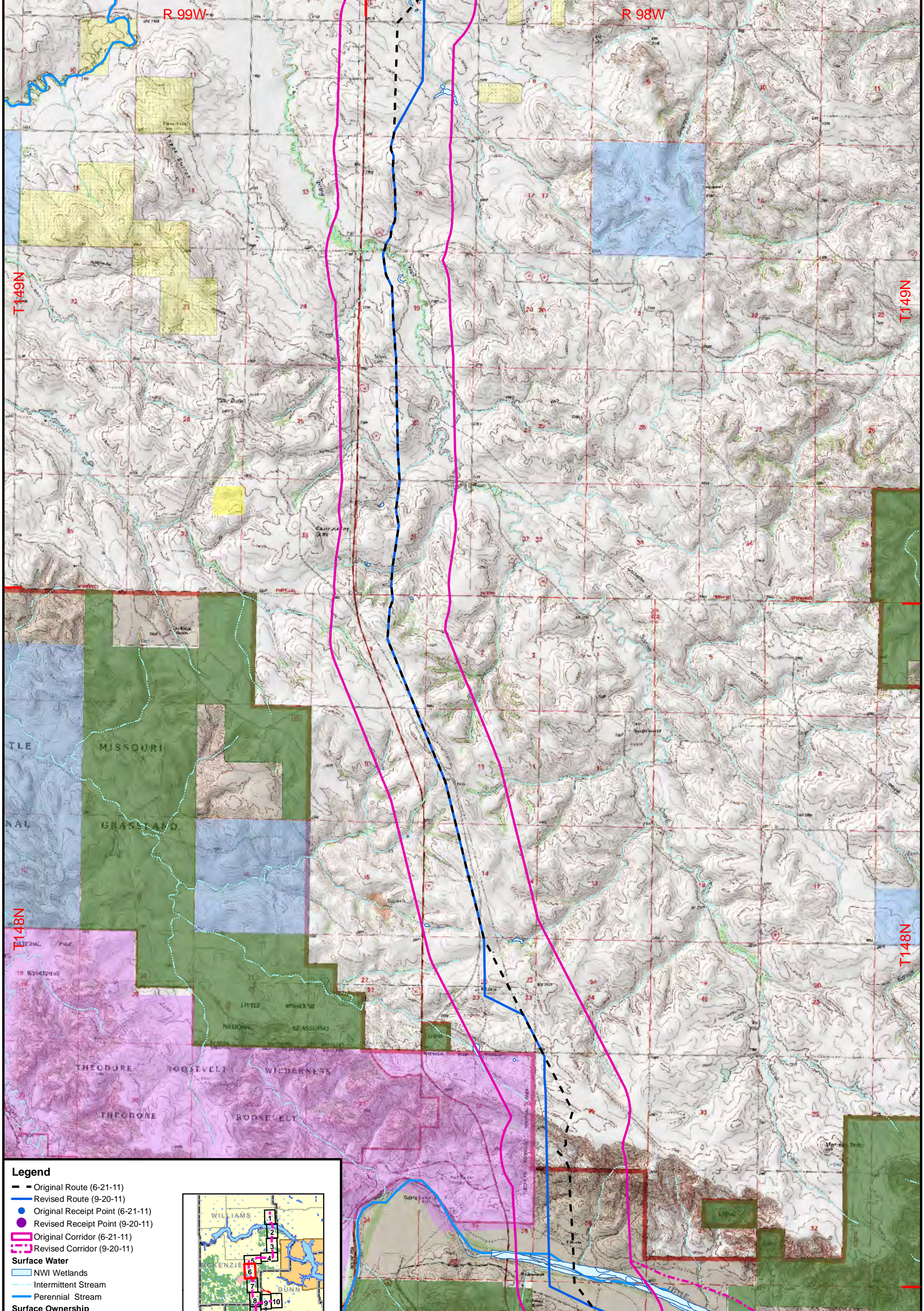
1:48,000
 1 inch = 4,000 feet
 0 2,000 4,000 Feet

Base Map: USGS 24K Shaded Relief Topographic Image

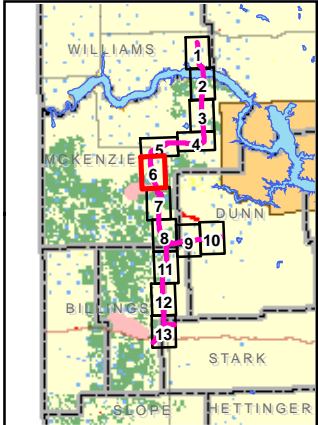
BakkenLink Pipeline LLC

Date: September 2011 Rev: 02

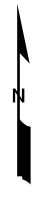
**Appendix B
 Figure 5
 Topography &
 Managed Lands**



- Legend**
- Original Route (6-21-11)
 - Revised Route (9-20-11)
 - Original Receipt Point (6-21-11)
 - Revised Receipt Point (9-20-11)
 - Original Corridor (6-21-11)
 - Revised Corridor (9-20-11)
 - Surface Water**
 - NWI Wetlands
 - Intermittent Stream
 - Perennial Stream
 - Surface Ownership**
 - Army Corps of Engineers
 - Bureau of Land Management
 - National Park Service
 - ND State Land Department
 - ND Game and Fish WMA
 - ND Game and Fish PLOTS
 - Private
 - US Forest Service



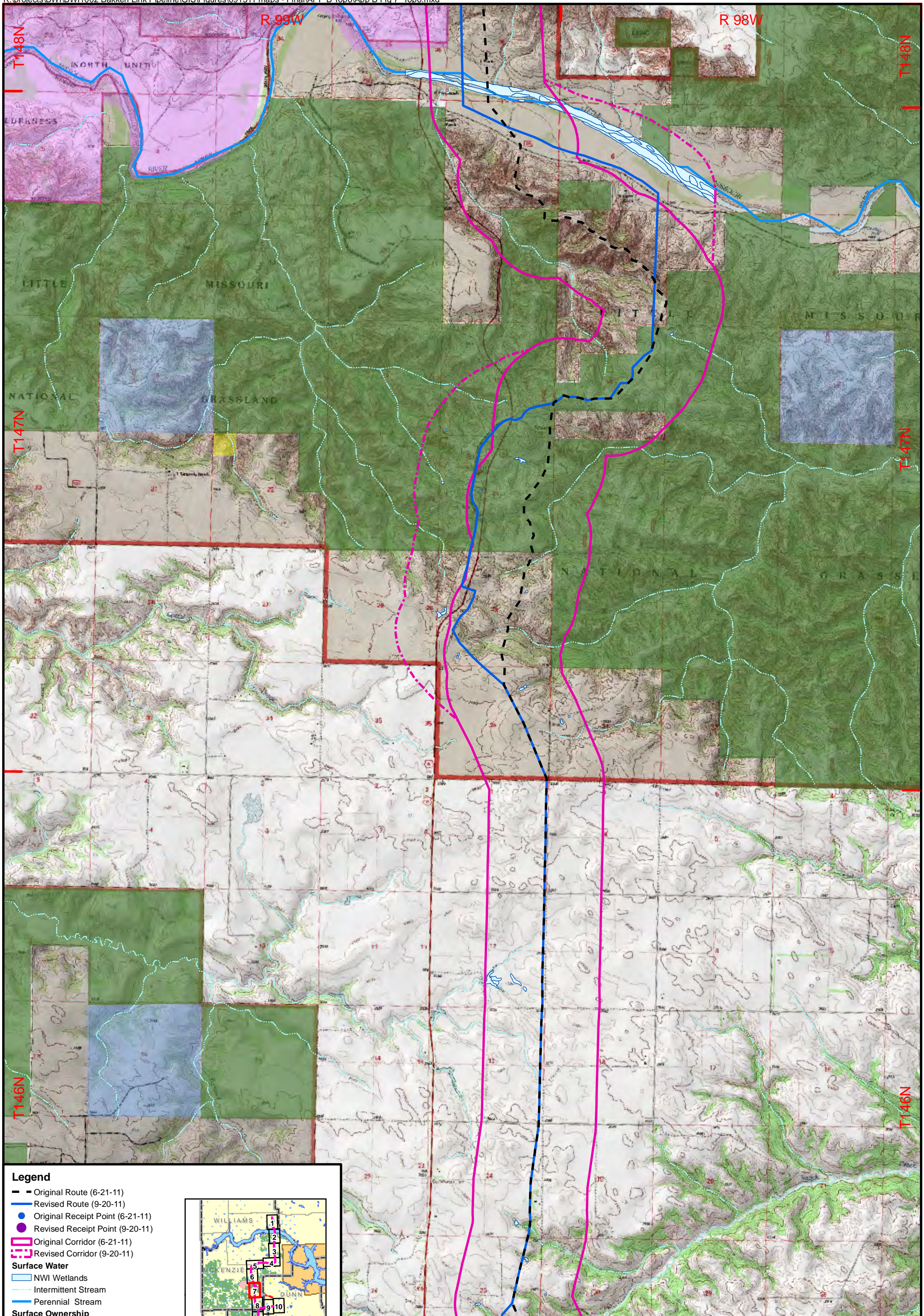
1:48,000
 1 inch = 4,000 feet
 0 2,000 4,000 Feet
 Base Map: USGS 24K Shaded Relief Topographic Image



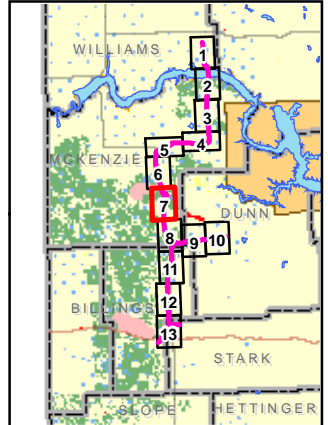
BakkenLink Pipeline LLC

Date: September 2011 Rev: 02

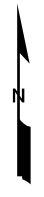
**Appendix B
 Figure 6
 Topography &
 Managed Lands**



- Legend**
- Original Route (6-21-11)
 - Revised Route (9-20-11)
 - Original Receipt Point (6-21-11)
 - Revised Receipt Point (9-20-11)
 - Original Corridor (6-21-11)
 - Revised Corridor (9-20-11)
 - Surface Water**
 - NWI Wetlands
 - Intermittent Stream
 - Perennial Stream
 - Surface Ownership**
 - Army Corps of Engineers
 - Bureau of Land Management
 - National Park Service
 - ND State Land Department
 - ND Game and Fish WMA
 - ND Game and Fish PLOTS
 - Private
 - US Forest Service



1:48,000
 1 inch = 4,000 feet
 0 2,000 4,000 Feet

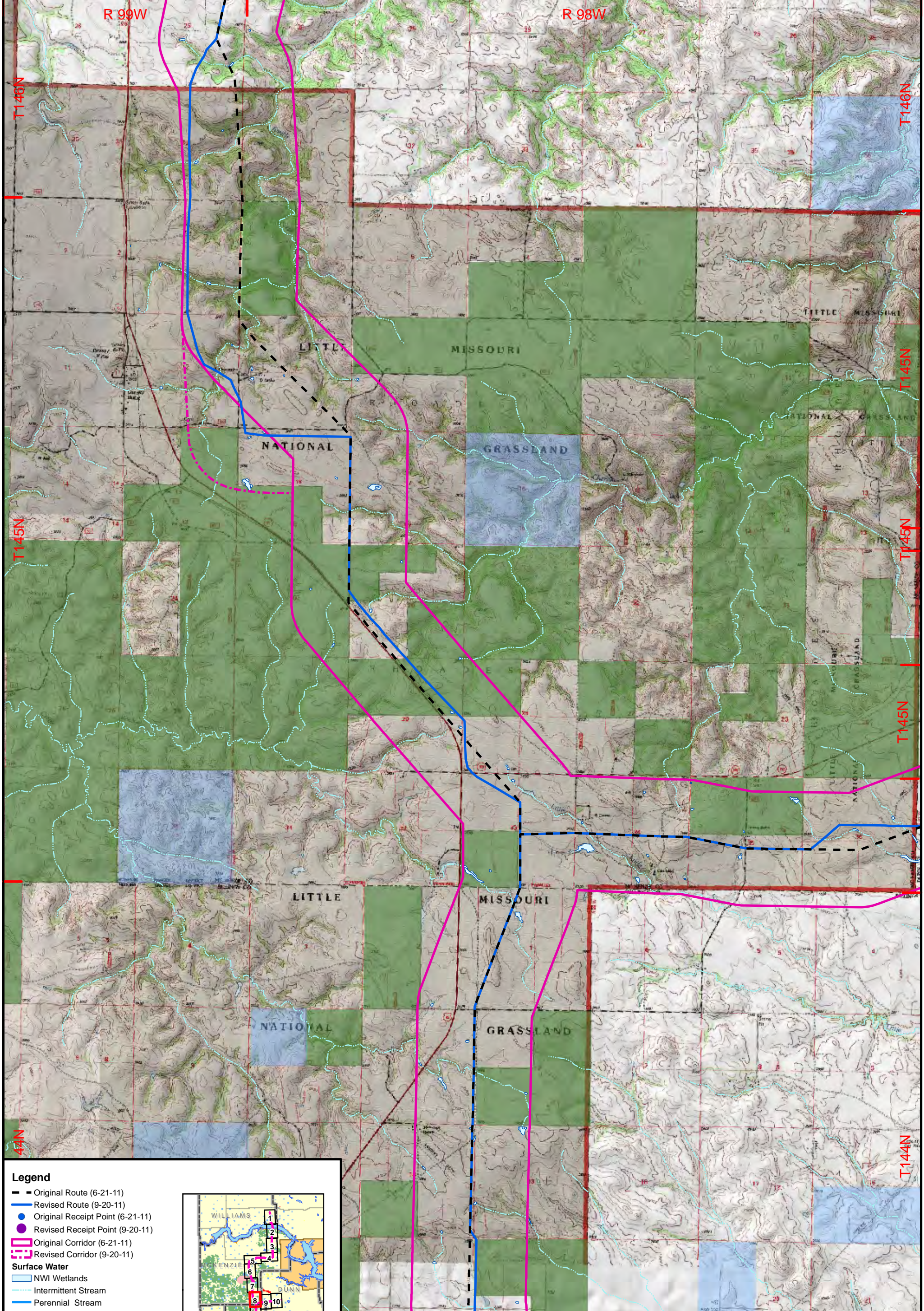


Base Map: USGS 24K Shaded Relief Topographic Image

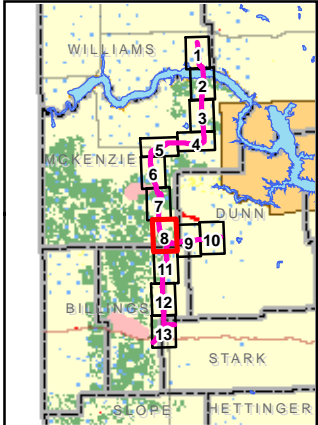
BakkenLink Pipeline LLC

Date: September 2011 Rev: 02

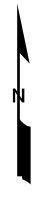
**Appendix B
 Figure 7
 Topography &
 Managed Lands**



- Legend**
- - Original Route (6-21-11)
 - Revised Route (9-20-11)
 - Original Receipt Point (6-21-11)
 - Revised Receipt Point (9-20-11)
 - Original Corridor (6-21-11)
 - Revised Corridor (9-20-11)
 - Surface Water**
 - NWI Wetlands
 - Intermittent Stream
 - Perennial Stream
 - Surface Ownership**
 - Army Corps of Engineers
 - Bureau of Land Management
 - National Park Service
 - ND State Land Department
 - ND Game and Fish WMA
 - ND Game and Fish PLOTS
 - Private
 - US Forest Service



1:48,000
 1 inch = 4,000 feet
 0 2,000 4,000 Feet

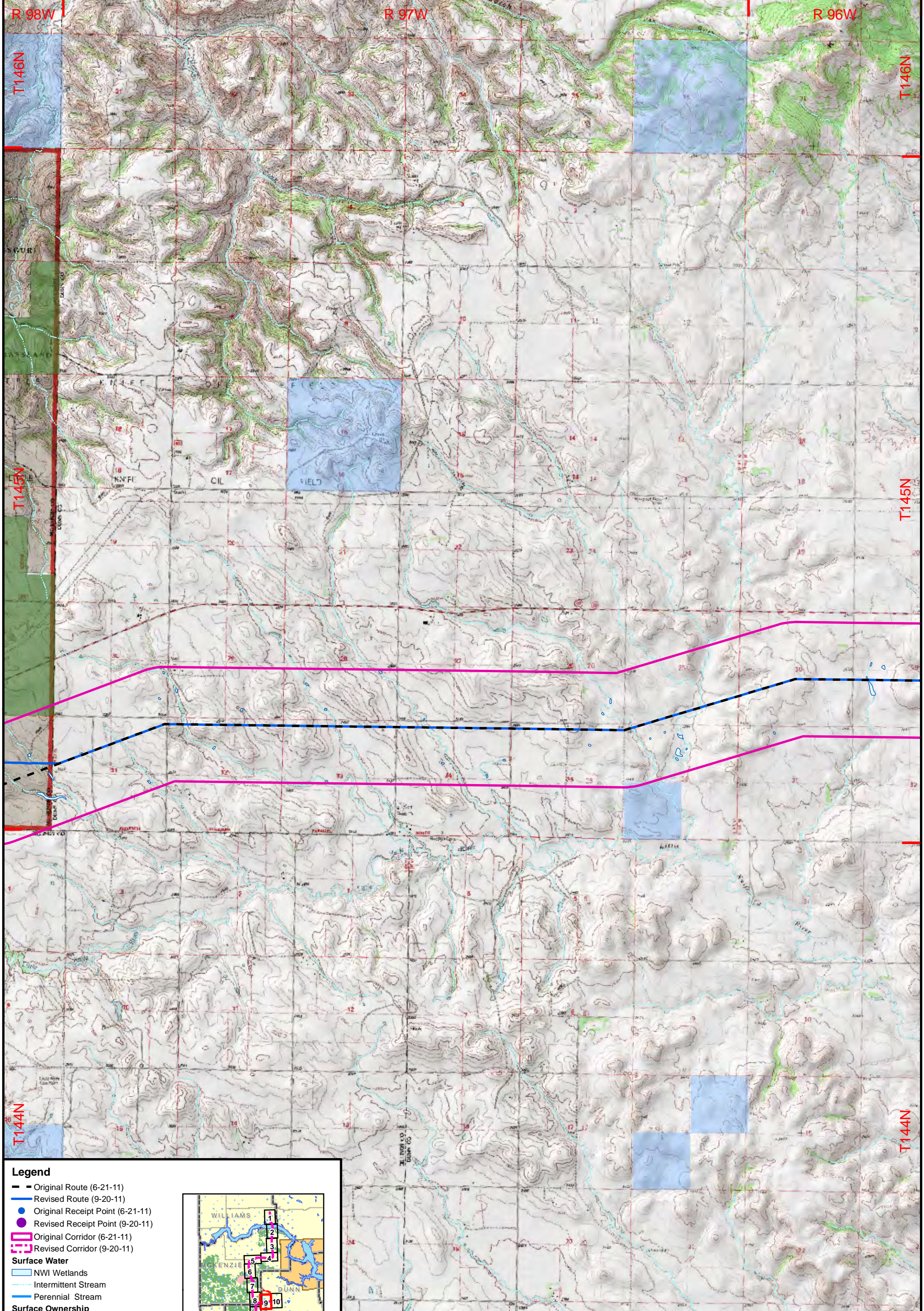


Base Map: USGS 24K Shaded Relief Topographic Image

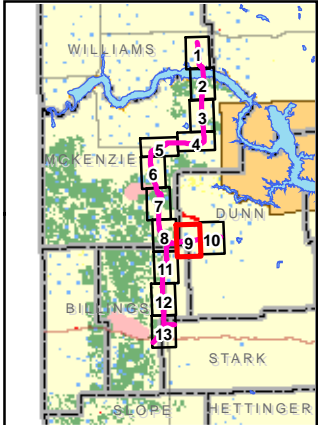
BakkenLink Pipeline LLC

Date: September 2011 Rev: 02

**Appendix B
 Figure 8
 Topography &
 Managed Lands**



- Legend**
- Original Route (6-21-11)
 - Revised Route (9-20-11)
 - Original Receipt Point (6-21-11)
 - Revised Receipt Point (9-20-11)
 - Original Corridor (6-21-11)
 - Revised Corridor (9-20-11)
 - Surface Water**
 - NWI Wetlands
 - Intermittent Stream
 - Perennial Stream
 - Surface Ownership**
 - Army Corps of Engineers
 - Bureau of Land Management
 - National Park Service
 - ND State Land Department
 - ND Game and Fish WMA
 - ND Game and Fish PLOTS
 - Private
 - US Forest Service



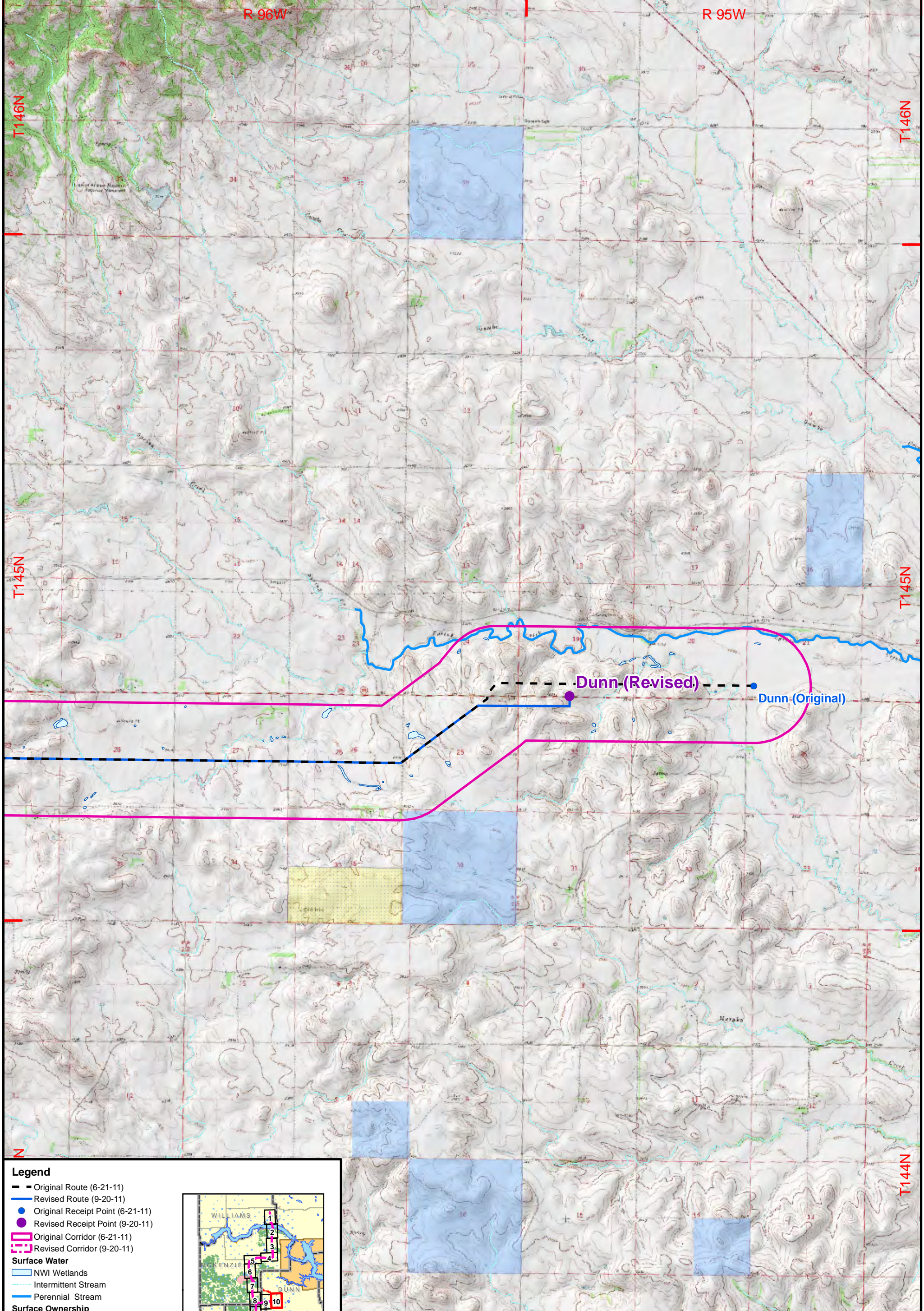
1:48,000
 1 inch = 4,000 feet
 0 2,000 4,000 Feet

Base Map: USGS 24K Shaded Relief Topographic Image

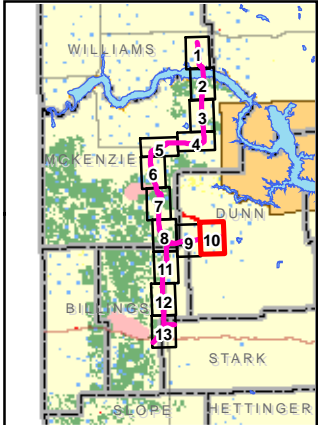
BakkenLink Pipeline LLC

Date: September 2011 Rev: 02

**Appendix B
 Figure 9
 Topography & Managed Lands**

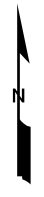


- Legend**
- Original Route (6-21-11)
 - Revised Route (9-20-11)
 - Original Receipt Point (6-21-11)
 - Revised Receipt Point (9-20-11)
 - Original Corridor (6-21-11)
 - Revised Corridor (9-20-11)
 - Surface Water**
 - NWI Wetlands
 - Intermittent Stream
 - Perennial Stream
 - Surface Ownership**
 - Army Corps of Engineers
 - Bureau of Land Management
 - National Park Service
 - ND State Land Department
 - ND Game and Fish WMA
 - ND Game and Fish PLOTS
 - Private
 - US Forest Service



1:48,000
 1 inch = 4,000 feet
 0 2,000 4,000 Feet

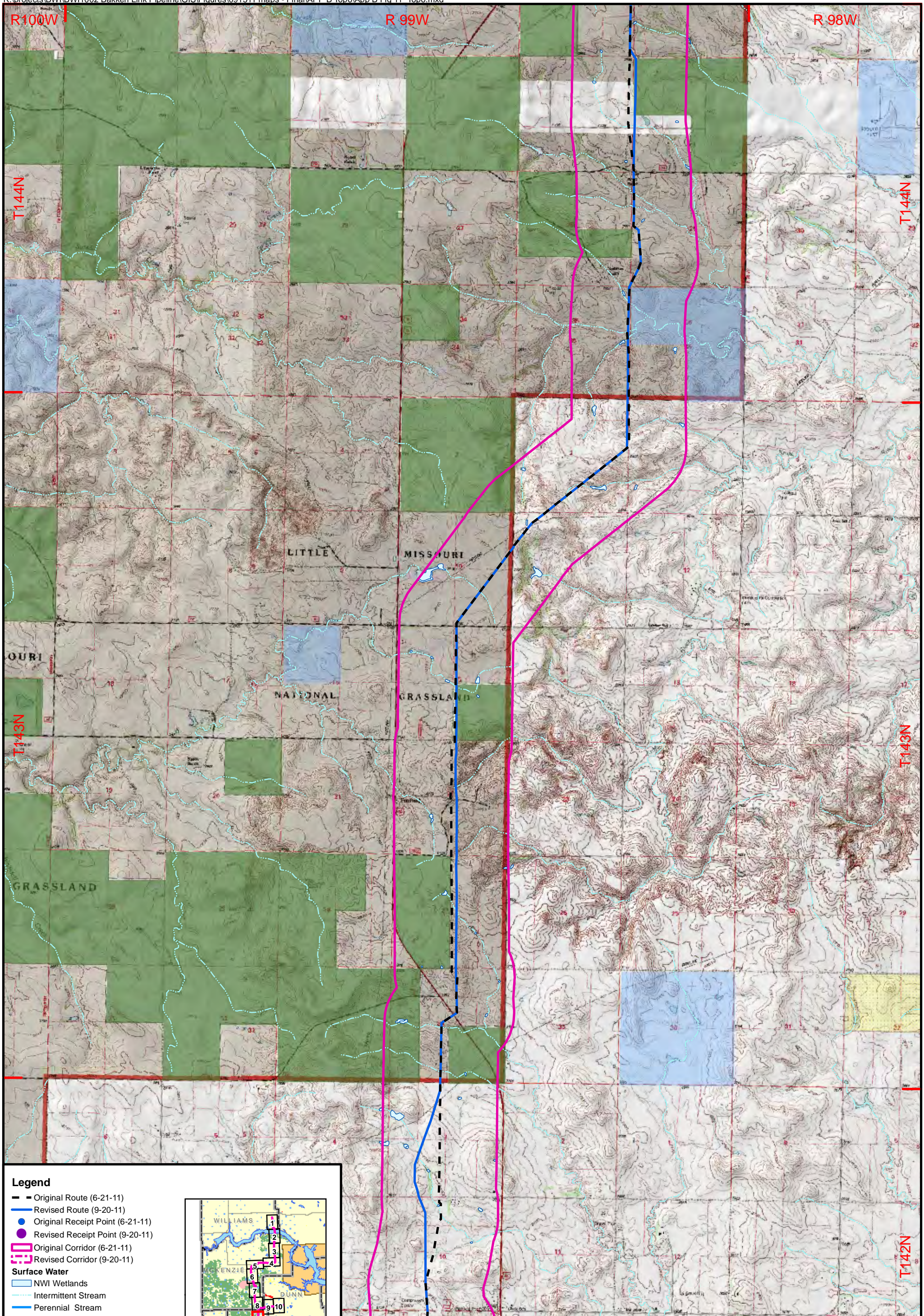
Base Map: USGS 24K Shaded Relief Topographic Image



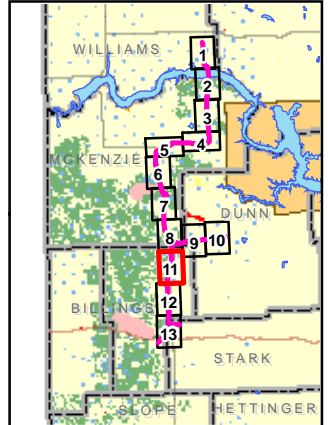
BakkenLink Pipeline LLC

Date: September 2011 Rev: 02

**Appendix B
 Figure 10
 Topography &
 Managed Lands**

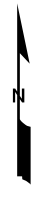


- Legend**
- Original Route (6-21-11)
 - Revised Route (9-20-11)
 - Original Receipt Point (6-21-11)
 - Revised Receipt Point (9-20-11)
 - Original Corridor (6-21-11)
 - Revised Corridor (9-20-11)
- Surface Water**
- NWI Wetlands
 - Intermittent Stream
 - Perennial Stream
- Surface Ownership**
- Army Corps of Engineers
 - Bureau of Land Management
 - National Park Service
 - ND State Land Department
 - ND Game and Fish WMA
 - ND Game and Fish PLOTS
 - Private
 - US Forest Service



1:48,000
 1 inch = 4,000 feet
 0 2,000 4,000 Feet

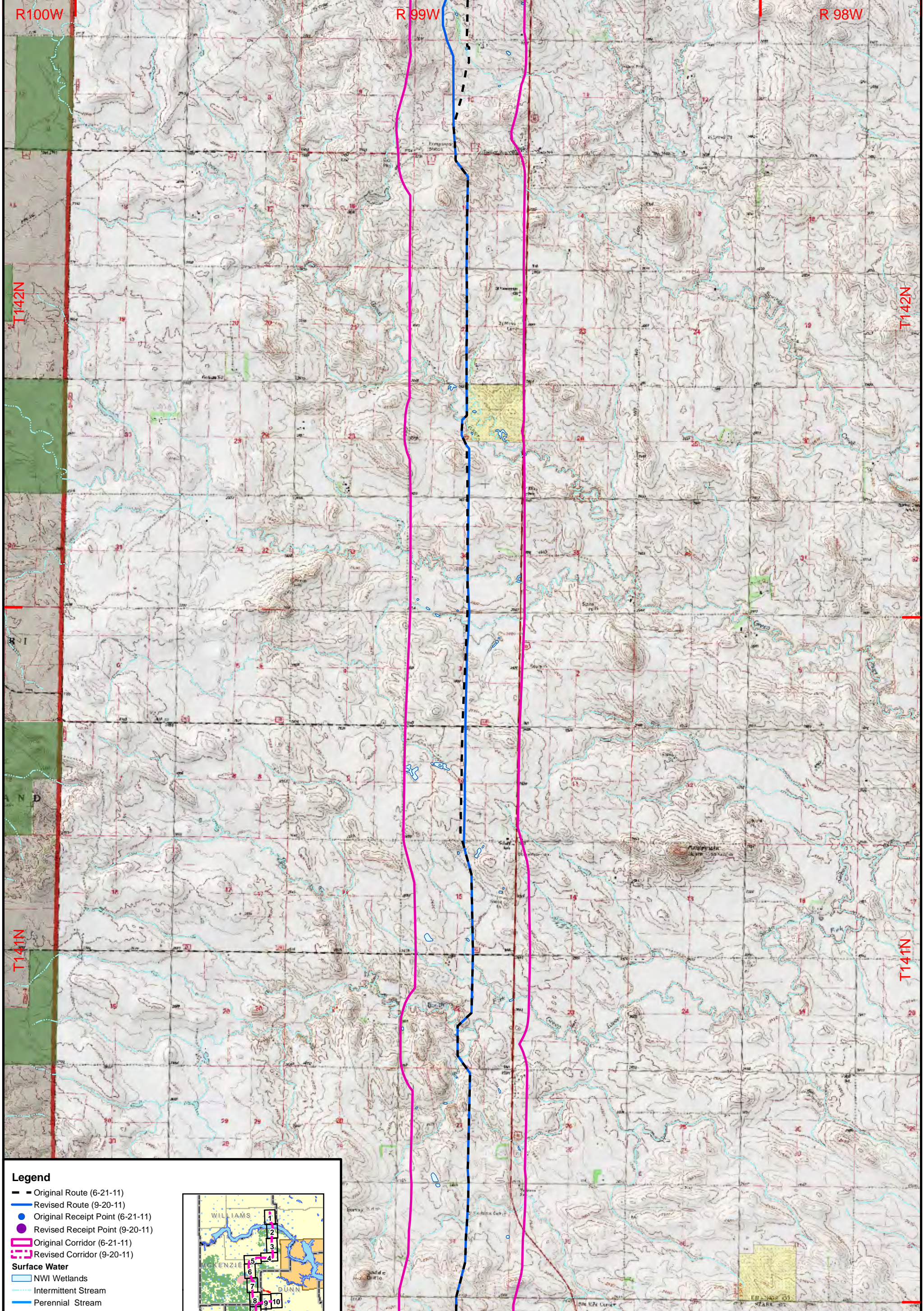
Base Map: USGS 24K Shaded Relief Topographic Image



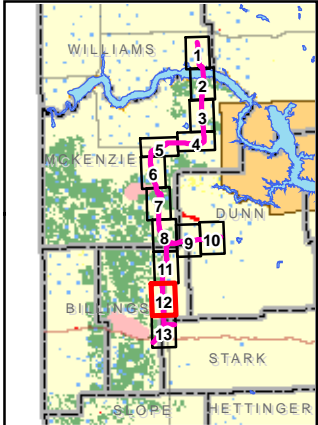
BakkenLink Pipeline LLC

Date: September 2011 Rev: 02

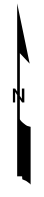
**Appendix B
 Figure 11
 Topography & Managed Lands**



- Legend**
- Original Route (6-21-11)
 - Revised Route (9-20-11)
 - Original Receipt Point (6-21-11)
 - Revised Receipt Point (9-20-11)
 - ▭ Original Corridor (6-21-11)
 - ▭ Revised Corridor (9-20-11)
- Surface Water**
- ▭ NWI Wetlands
 - ▭ Intermittent Stream
 - ▭ Perennial Stream
- Surface Ownership**
- ▭ Army Corps of Engineers
 - ▭ Bureau of Land Management
 - ▭ National Park Service
 - ▭ ND State Land Department
 - ▭ ND Game and Fish WMA
 - ▭ ND Game and Fish PLOTS
 - ▭ Private
 - ▭ US Forest Service



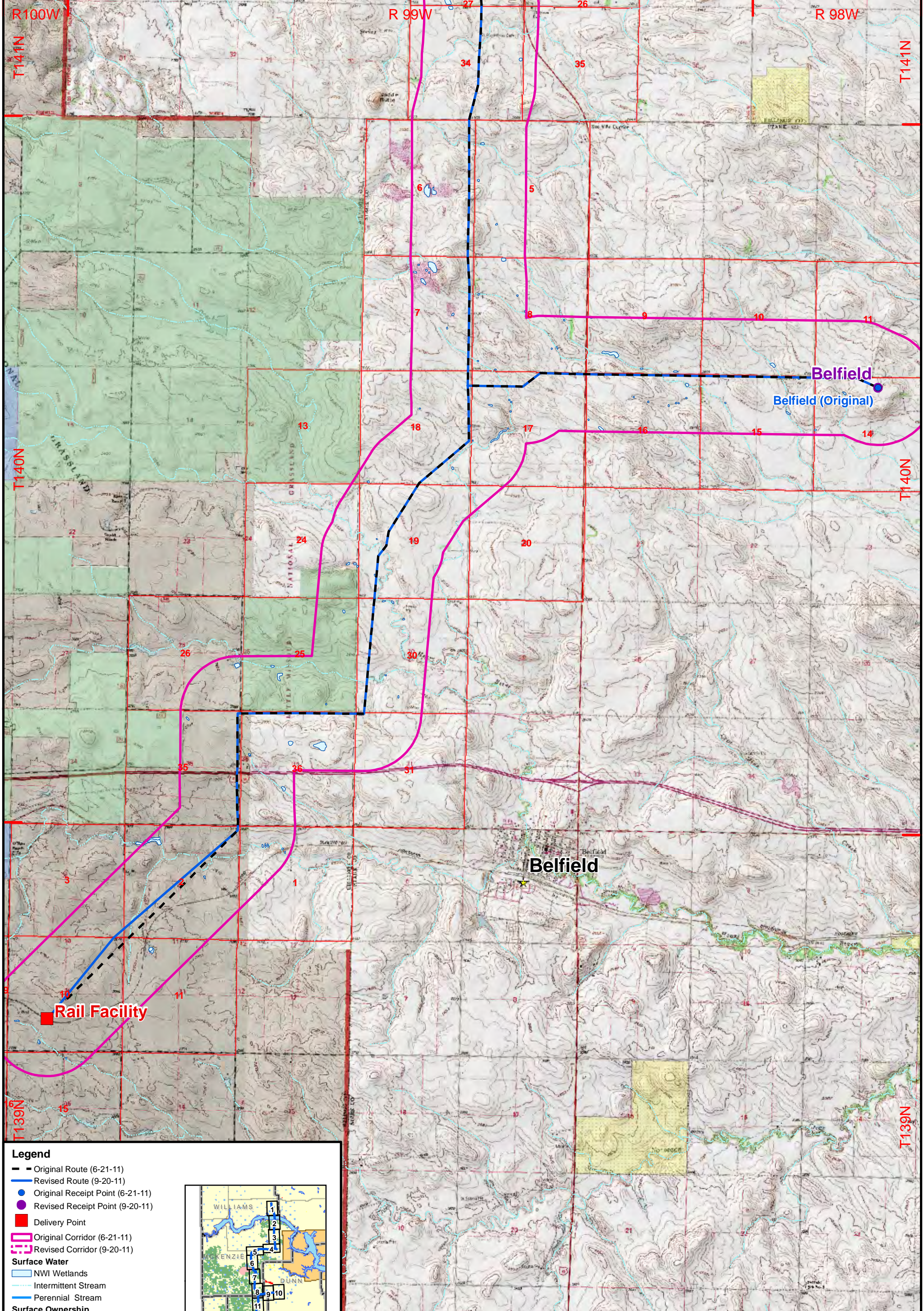
1:48,000
 1 inch = 4,000 feet
 0 2,000 4,000 Feet
 Base Map: USGS 24K Shaded Relief Topographic Image



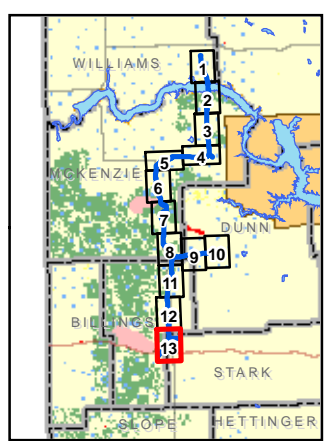
BakkenLink Pipeline LLC

**Appendix B
 Figure 12
 Topography &
 Managed Lands**

Date: September 2011 Rev: 02

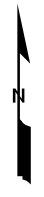


- Legend**
- Original Route (6-21-11)
 - Revised Route (9-20-11)
 - Original Receipt Point (6-21-11)
 - Revised Receipt Point (9-20-11)
 - Delivery Point
 - ▭ Original Corridor (6-21-11)
 - ▭ Revised Corridor (9-20-11)
 - Surface Water**
 - NWI Wetlands
 - Intermittent Stream
 - Perennial Stream
 - Surface Ownership**
 - Army Corps of Engineers
 - Bureau of Land Management
 - National Park Service
 - ND State Land Department
 - ND Game and Fish WMA
 - ND Game and Fish PLOTS
 - Private
 - US Forest Service



1:48,000
 1 inch = 4,000 feet
 0 2,000 4,000 Feet

Base Map: USGS 24K Shaded Relief Topographic Image



BakkenLink Pipeline LLC

Date: September 2011 Rev: 02

**Appendix B
 Figure 13
 Topography &
 Managed Lands**