

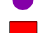




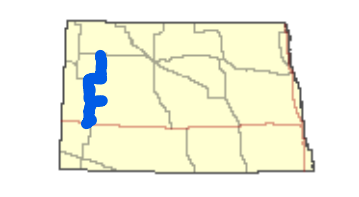
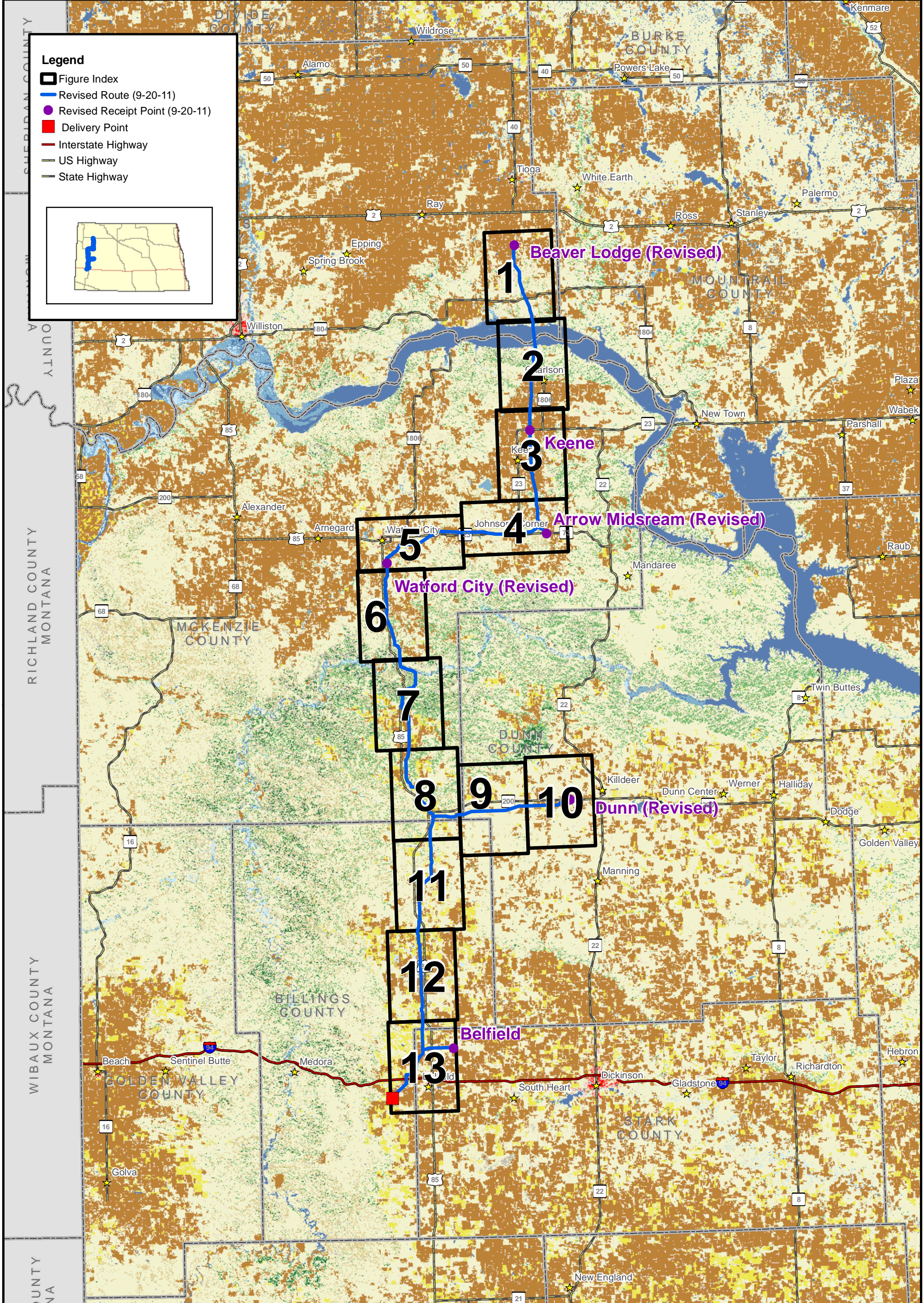
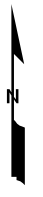


Legend

-  Figure Index
-  Revised Route (9-20-11)
-  Revised Receipt Point (9-20-11)
-  Delivery Point
-  Interstate Highway
-  US Highway
-  State Highway

1:633,600
 1 inch = 10 miles
 0 5 10 Miles
 Base Map: NLCD 2001

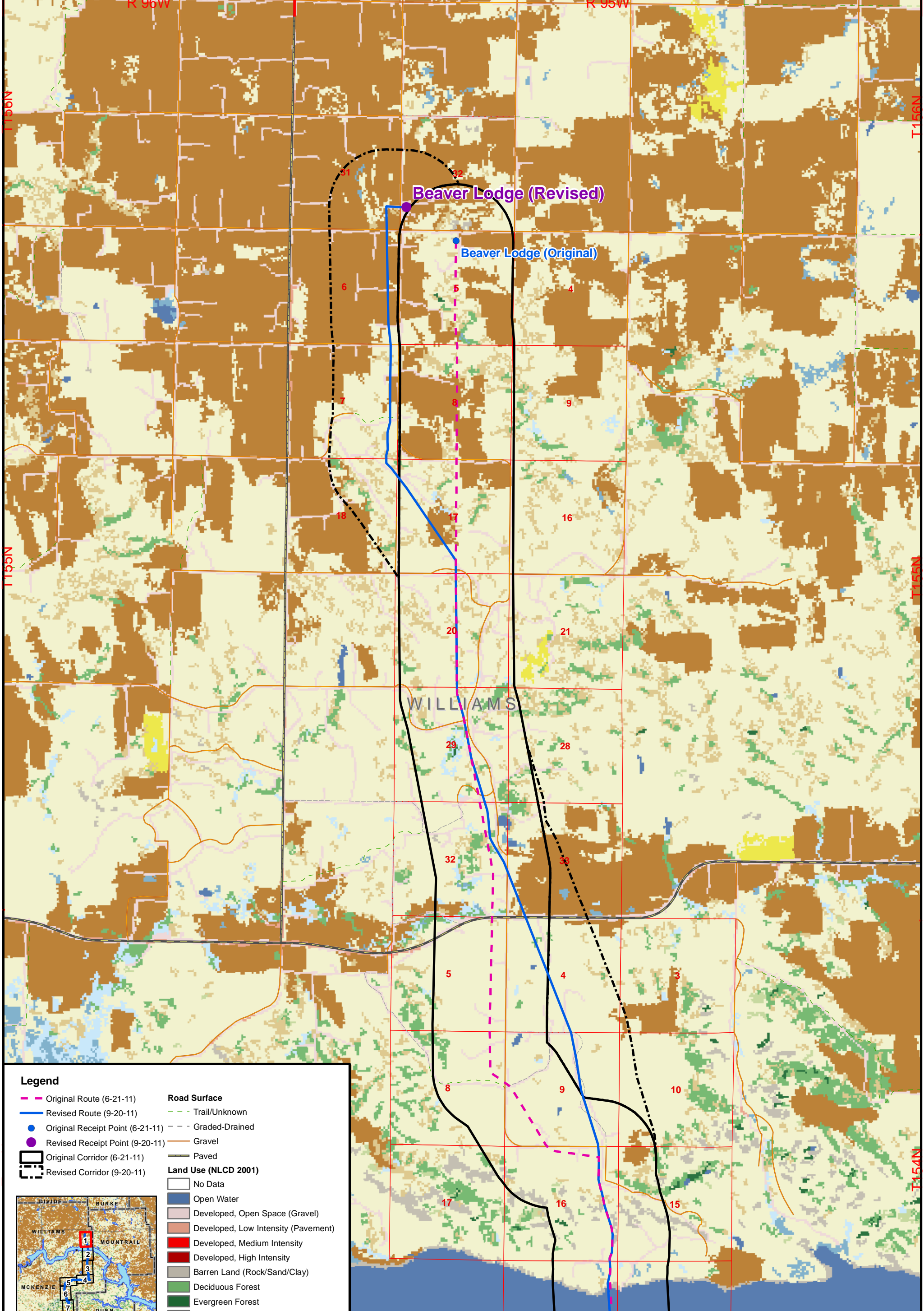


BakkenLink Pipeline LLC

**Appendix C
 Index Sheet
 Land Use**

Date: September 2011

Rev: 02



Legend

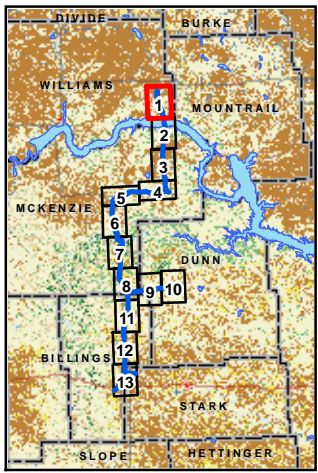
- Original Route (6-21-11)
- Revised Route (9-20-11)
- Original Receipt Point (6-21-11)
- Revised Receipt Point (9-20-11)
- Original Corridor (6-21-11)
- Revised Corridor (9-20-11)

Road Surface

- Trail/Unknown
- Graded-Drained
- Gravel
- Paved

Land Use (NLCD 2001)

- No Data
- Open Water
- Developed, Open Space (Gravel)
- Developed, Low Intensity (Pavement)
- Developed, Medium Intensity
- Developed, High Intensity
- Barren Land (Rock/Sand/Clay)
- Deciduous Forest
- Evergreen Forest
- Mixed Forest
- Shrubland
- Grassland/Herbaceous
- Pasture/Hay
- Cultivated Crops
- Woody Wetlands
- Emergent Herbaceous Wetlands



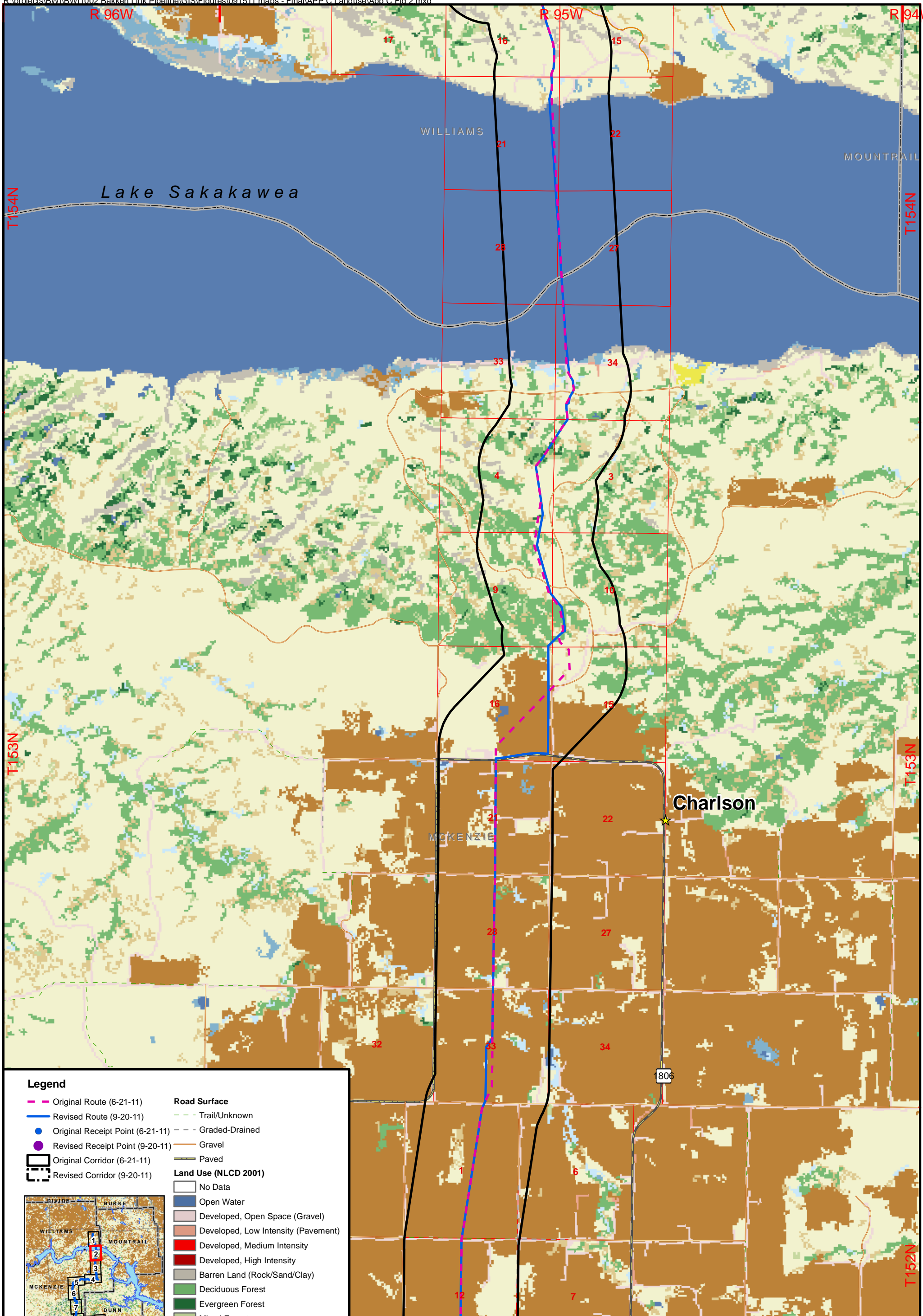
1:48,000
 1 inch = 4,000 feet
 0 2,000 4,000 Feet

Base Map: National Land Cover Dataset (NLCD) 2001

BakkenLink Pipeline LLC

Date: September 2011 Rev: 02

**Appendix C
 Figure 1
 Land Use**



Legend

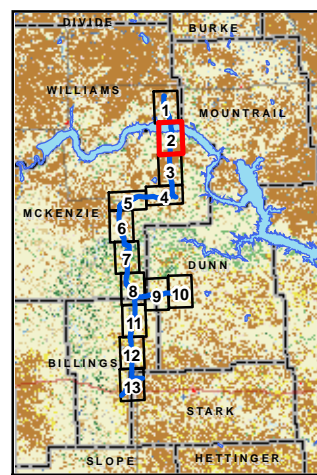
- Original Route (6-21-11)
- Revised Route (9-20-11)
- Original Receipt Point (6-21-11)
- Revised Receipt Point (9-20-11)
- Original Corridor (6-21-11)
- Revised Corridor (9-20-11)

Road Surface

- Trail/Unknown
- Graded-Drained
- Gravel
- Paved

Land Use (NLCD 2001)

- No Data
- Open Water
- Developed, Open Space (Gravel)
- Developed, Low Intensity (Pavement)
- Developed, Medium Intensity
- Developed, High Intensity
- Barren Land (Rock/Sand/Clay)
- Deciduous Forest
- Evergreen Forest
- Mixed Forest
- Shrubland
- Grassland/Herbaceous
- Pasture/Hay
- Cultivated Crops
- Woody Wetlands
- Emergent Herbaceous Wetlands



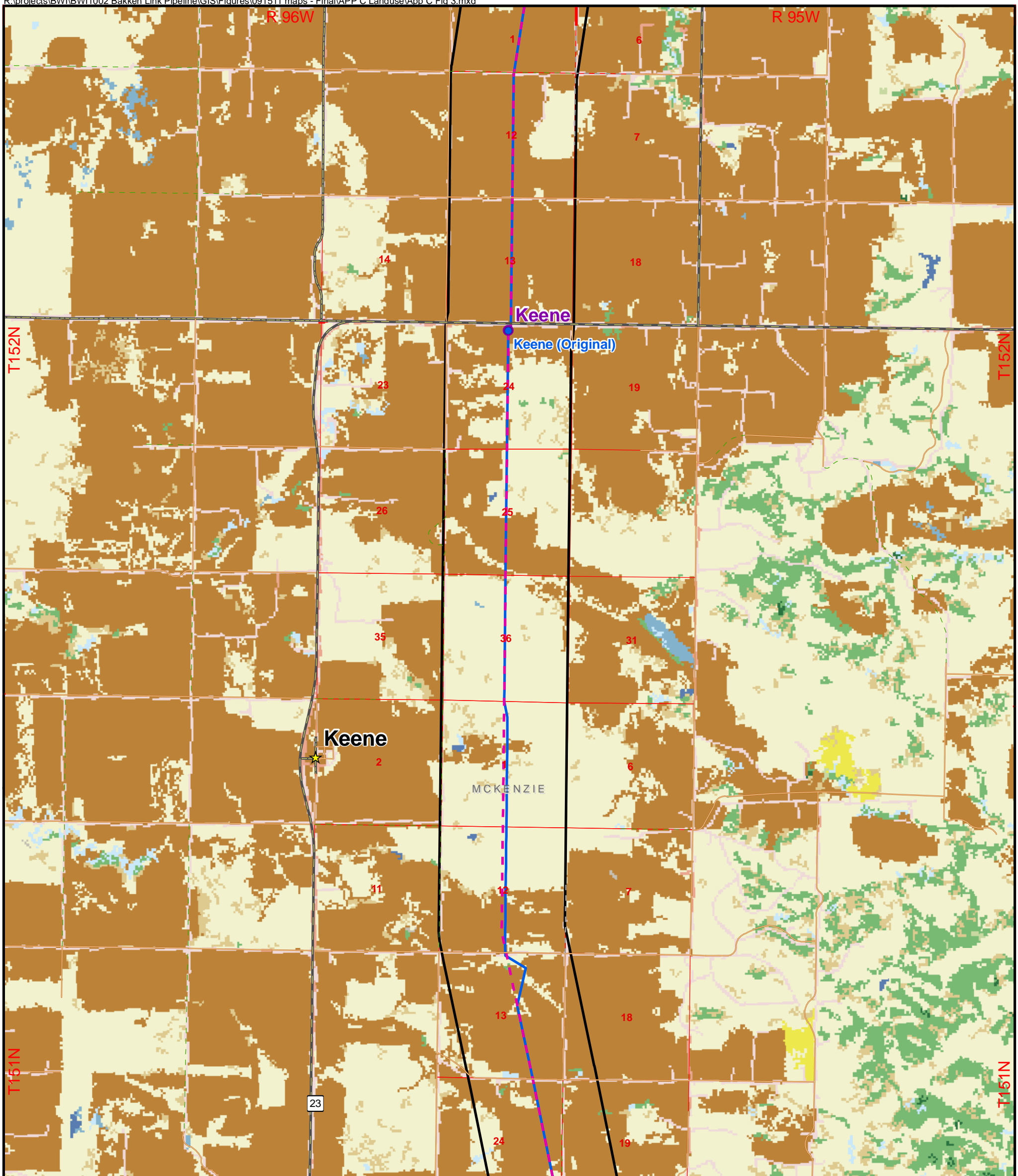
1:48,000
 1 inch = 4,000 feet
 0 2,000 4,000 Feet
 Base Map: National Land Cover Dataset (NLCD) 2001



BakkenLink Pipeline LLC

Date: September 2011 Rev: 02

**Appendix C
 Figure 2
 Land Use**



Legend

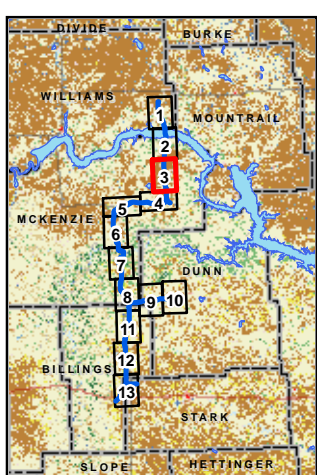
- Original Route (6-21-11)
- Revised Route (9-20-11)
- Original Receipt Point (6-21-11)
- Revised Receipt Point (9-20-11)
- Original Corridor (6-21-11)
- Revised Corridor (9-20-11)

Road Surface

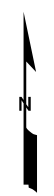
- Trail/Unknown
- Graded-Drained
- Gravel
- Paved

Land Use (NLCD 2001)

- No Data
- Open Water
- Developed, Open Space (Gravel)
- Developed, Low Intensity (Pavement)
- Developed, Medium Intensity
- Developed, High Intensity
- Barren Land (Rock/Sand/Clay)
- Deciduous Forest
- Evergreen Forest
- Mixed Forest
- Shrubland
- Grassland/Herbaceous
- Pasture/Hay
- Cultivated Crops
- Woody Wetlands
- Emergent Herbaceous Wetlands



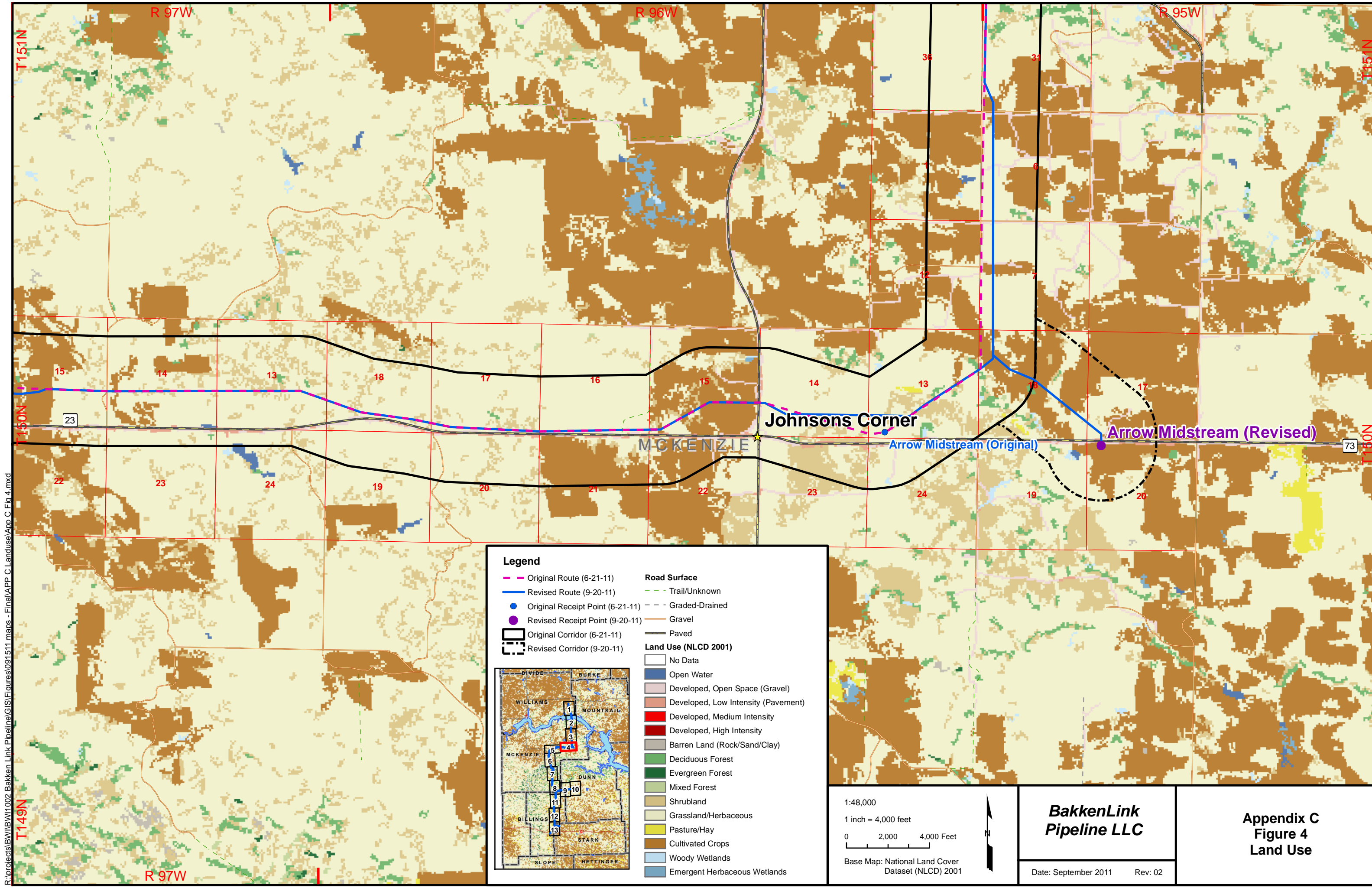
1:48,000
 1 inch = 4,000 feet
 0 2,000 4,000 Feet
 Base Map: National Land Cover Dataset (NLCD) 2001



**BakkenLink
 Pipeline LLC**

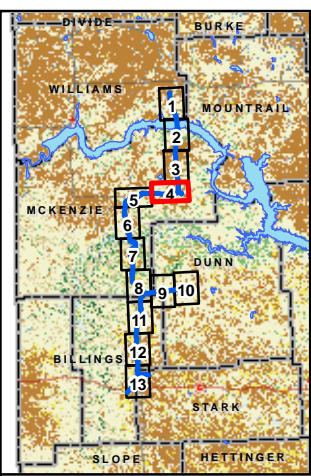
**Appendix C
 Figure 3
 Land Use**

Date: September 2011 Rev: 02

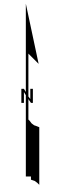


R:\projects\BakkenLink\Pipeline\GIS\Figures\091511_maps - Final\APP C Landuse\APP C Fig 4.mxd

- Legend**
- Original Route (6-21-11)
 - Revised Route (9-20-11)
 - Original Receipt Point (6-21-11)
 - Revised Receipt Point (9-20-11)
 - Original Corridor (6-21-11)
 - Revised Corridor (9-20-11)
- Road Surface**
- - - Trail/Unknown
 - - - Graded-Drained
 - Gravel
 - Paved
- Land Use (NLCD 2001)**
- No Data
 - Open Water
 - Developed, Open Space (Gravel)
 - Developed, Low Intensity (Pavement)
 - Developed, Medium Intensity
 - Developed, High Intensity
 - Barren Land (Rock/Sand/Clay)
 - Deciduous Forest
 - Evergreen Forest
 - Mixed Forest
 - Shrubland
 - Grassland/Herbaceous
 - Pasture/Hay
 - Cultivated Crops
 - Woody Wetlands
 - Emergent Herbaceous Wetlands

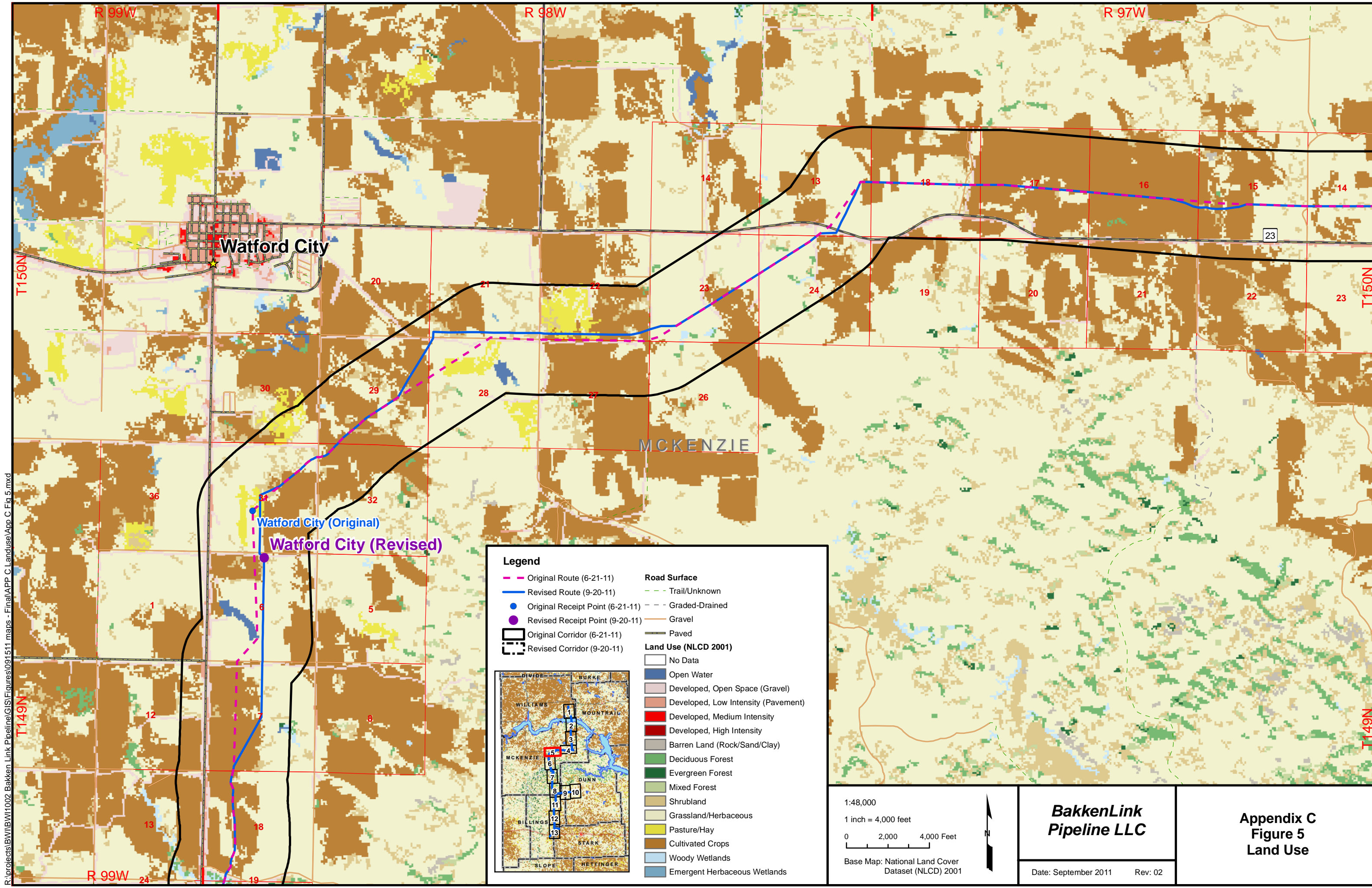


1:48,000
 1 inch = 4,000 feet
 0 2,000 4,000 Feet
 Base Map: National Land Cover Dataset (NLCD) 2001



BakkenLink Pipeline LLC
 Date: September 2011 Rev: 02

**Appendix C
 Figure 4
 Land Use**



R:\projects\BWB\1002 Bakken Link Pipeline\GIS\Figures\091511 maps - Final\APP C Landuse\APP C Fig 5.mxd

Legend

- Original Route (6-21-11)
- Revised Route (9-20-11)
- Original Receipt Point (6-21-11)
- Revised Receipt Point (9-20-11)
- Original Corridor (6-21-11)
- Revised Corridor (9-20-11)

Road Surface

- Trail/Unknown
- Graded-Drained
- Gravel
- Paved

Land Use (NLCD 2001)

- No Data
- Open Water
- Developed, Open Space (Gravel)
- Developed, Low Intensity (Pavement)
- Developed, Medium Intensity
- Developed, High Intensity
- Barren Land (Rock/Sand/Clay)
- Deciduous Forest
- Evergreen Forest
- Mixed Forest
- Shrubland
- Grassland/Herbaceous
- Pasture/Hay
- Cultivated Crops
- Woody Wetlands
- Emergent Herbaceous Wetlands

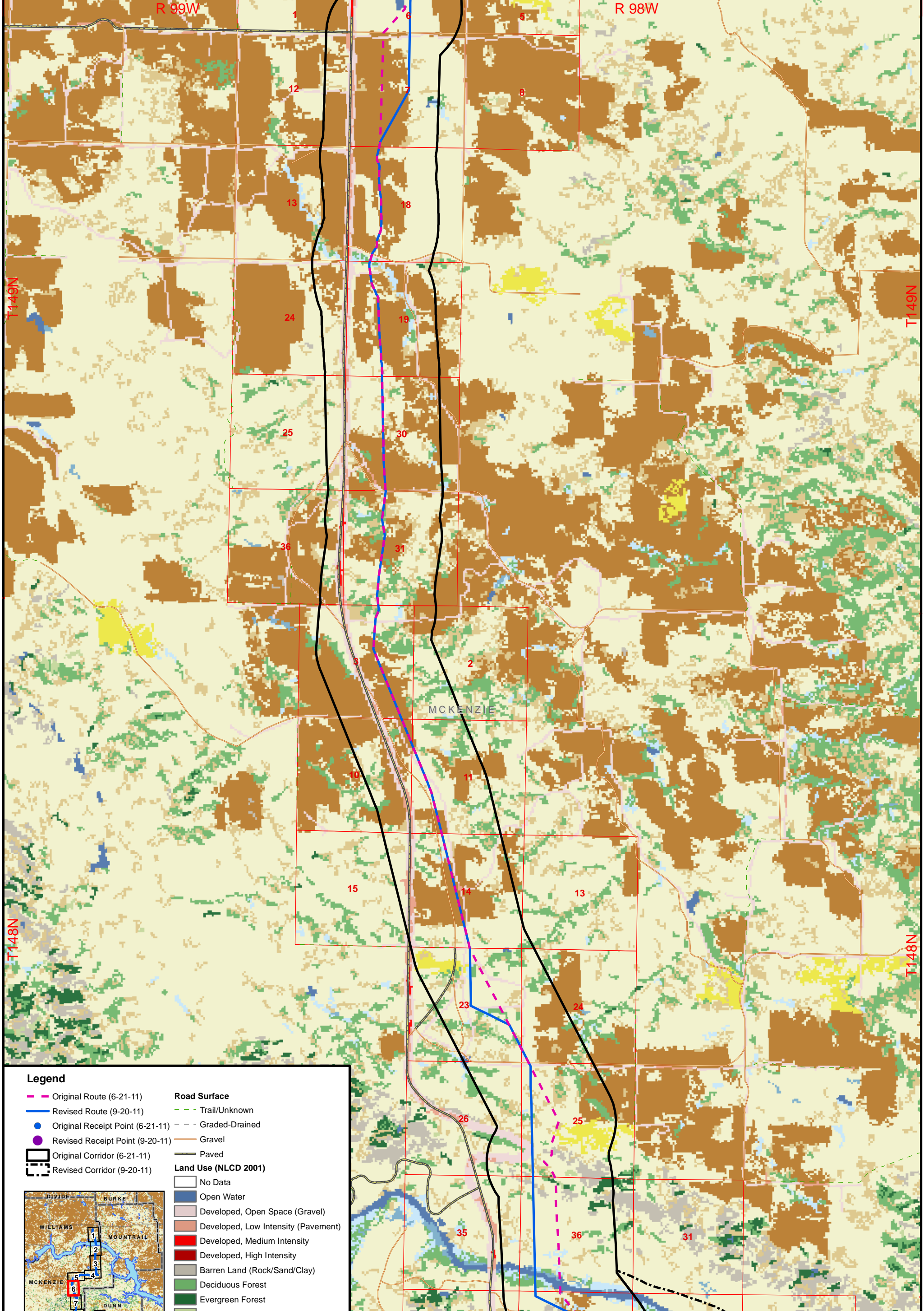
1:48,000
 1 inch = 4,000 feet
 0 2,000 4,000 Feet

Base Map: National Land Cover Dataset (NLCD) 2001

**BakkenLink
Pipeline LLC**

Date: September 2011 Rev: 02

**Appendix C
Figure 5
Land Use**



Legend

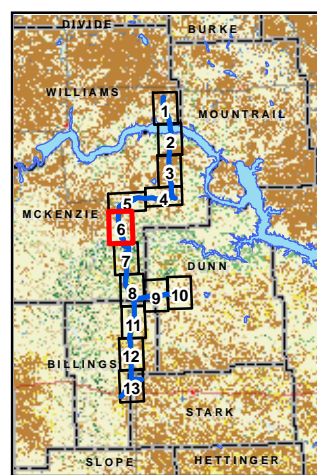
- Original Route (6-21-11)
- Revised Route (9-20-11)
- Original Receipt Point (6-21-11)
- Revised Receipt Point (9-20-11)
- Original Corridor (6-21-11)
- Revised Corridor (9-20-11)

Road Surface

- Trail/Unknown
- Graded-Drained
- Gravel
- Paved

Land Use (NLCD 2001)

- No Data
- Open Water
- Developed, Open Space (Gravel)
- Developed, Low Intensity (Pavement)
- Developed, Medium Intensity
- Developed, High Intensity
- Barren Land (Rock/Sand/Clay)
- Deciduous Forest
- Evergreen Forest
- Mixed Forest
- Shrubland
- Grassland/Herbaceous
- Pasture/Hay
- Cultivated Crops
- Woody Wetlands
- Emergent Herbaceous Wetlands



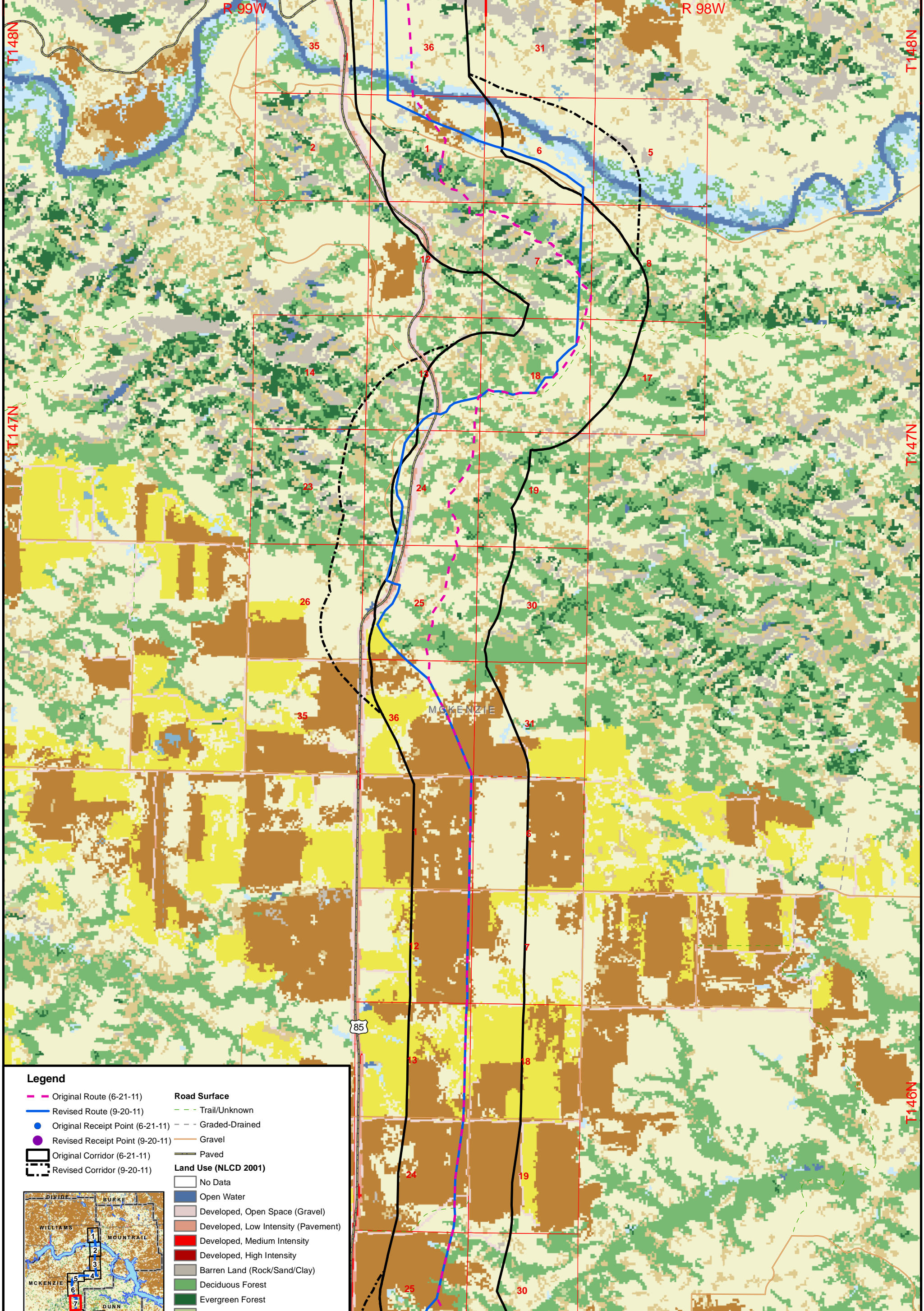
1:48,000
 1 inch = 4,000 feet
 0 2,000 4,000 Feet
 Base Map: National Land Cover Dataset (NLCD) 2001



BakkenLink Pipeline LLC

**Appendix C
 Figure 6
 Land Use**

Date: September 2011 Rev: 02



Legend

- Original Route (6-21-11)
- Revised Route (9-20-11)
- Original Receipt Point (6-21-11)
- Revised Receipt Point (9-20-11)
- Original Corridor (6-21-11)
- Revised Corridor (9-20-11)

Road Surface

- Trail/Unknown
- Graded-Drained
- Gravel
- Paved

Land Use (NLCD 2001)

- No Data
- Open Water
- Developed, Open Space (Gravel)
- Developed, Low Intensity (Pavement)
- Developed, Medium Intensity
- Developed, High Intensity
- Barren Land (Rock/Sand/Clay)
- Deciduous Forest
- Evergreen Forest
- Mixed Forest
- Shrubland
- Grassland/Herbaceous
- Pasture/Hay
- Cultivated Crops
- Woody Wetlands
- Emergent Herbaceous Wetlands

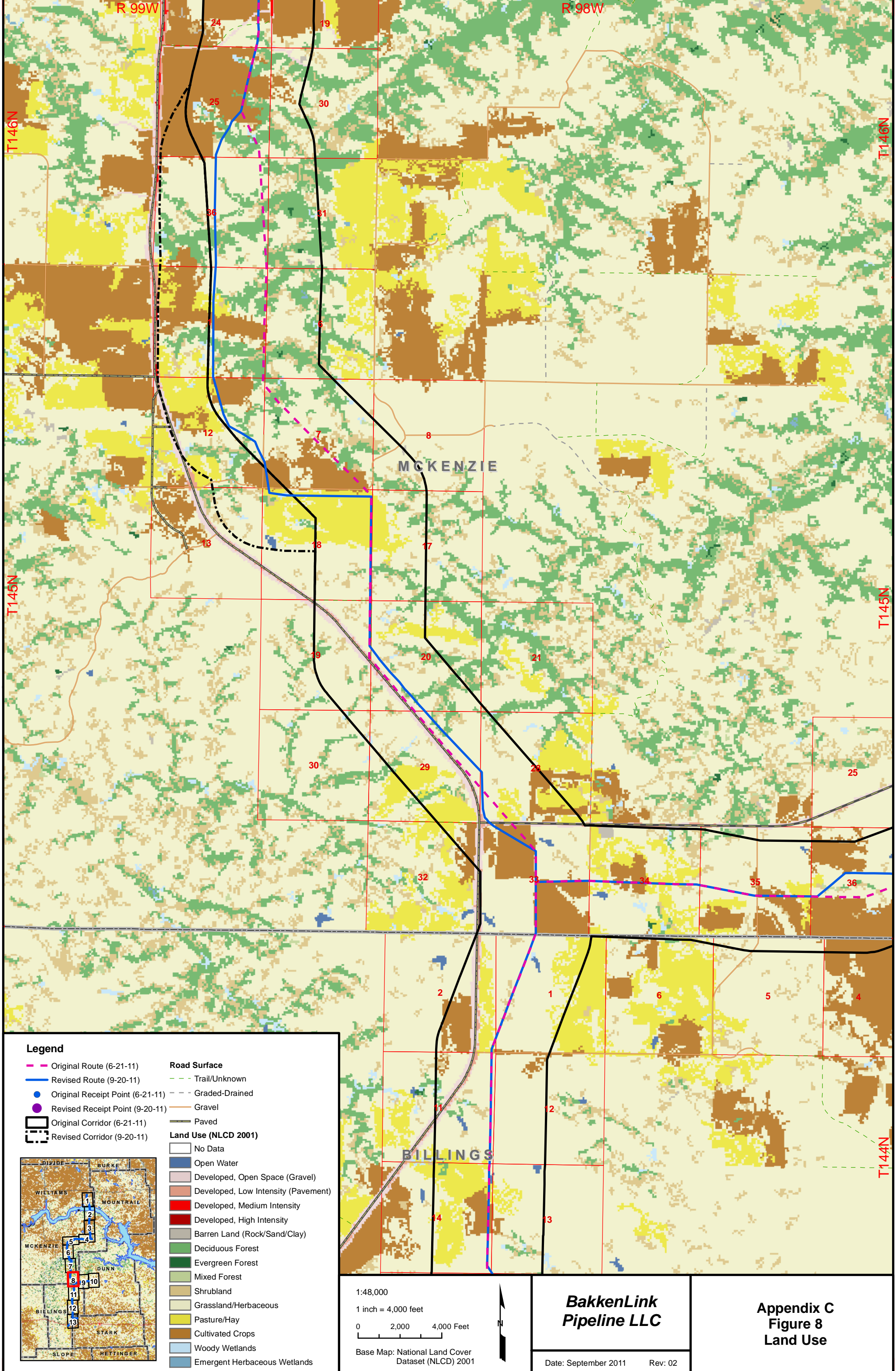
1:48,000
 1 inch = 4,000 feet
 0 2,000 4,000 Feet

Base Map: National Land Cover Dataset (NLCD) 2001

BakkenLink Pipeline LLC

Date: September 2011 Rev: 02

**Appendix C
 Figure 7
 Land Use**



Legend

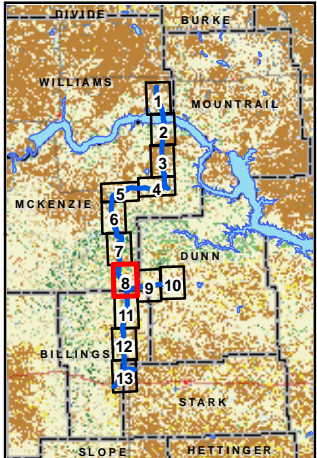
- Original Route (6-21-11)
- Revised Route (9-20-11)
- Original Receipt Point (6-21-11)
- Revised Receipt Point (9-20-11)
- Original Corridor (6-21-11)
- Revised Corridor (9-20-11)

Road Surface

- Trail/Unknown
- Graded-Drained
- Gravel
- Paved

Land Use (NLCD 2001)

- No Data
- Open Water
- Developed, Open Space (Gravel)
- Developed, Low Intensity (Pavement)
- Developed, Medium Intensity
- Developed, High Intensity
- Barren Land (Rock/Sand/Clay)
- Deciduous Forest
- Evergreen Forest
- Mixed Forest
- Shrubland
- Grassland/Herbaceous
- Pasture/Hay
- Cultivated Crops
- Woody Wetlands
- Emergent Herbaceous Wetlands

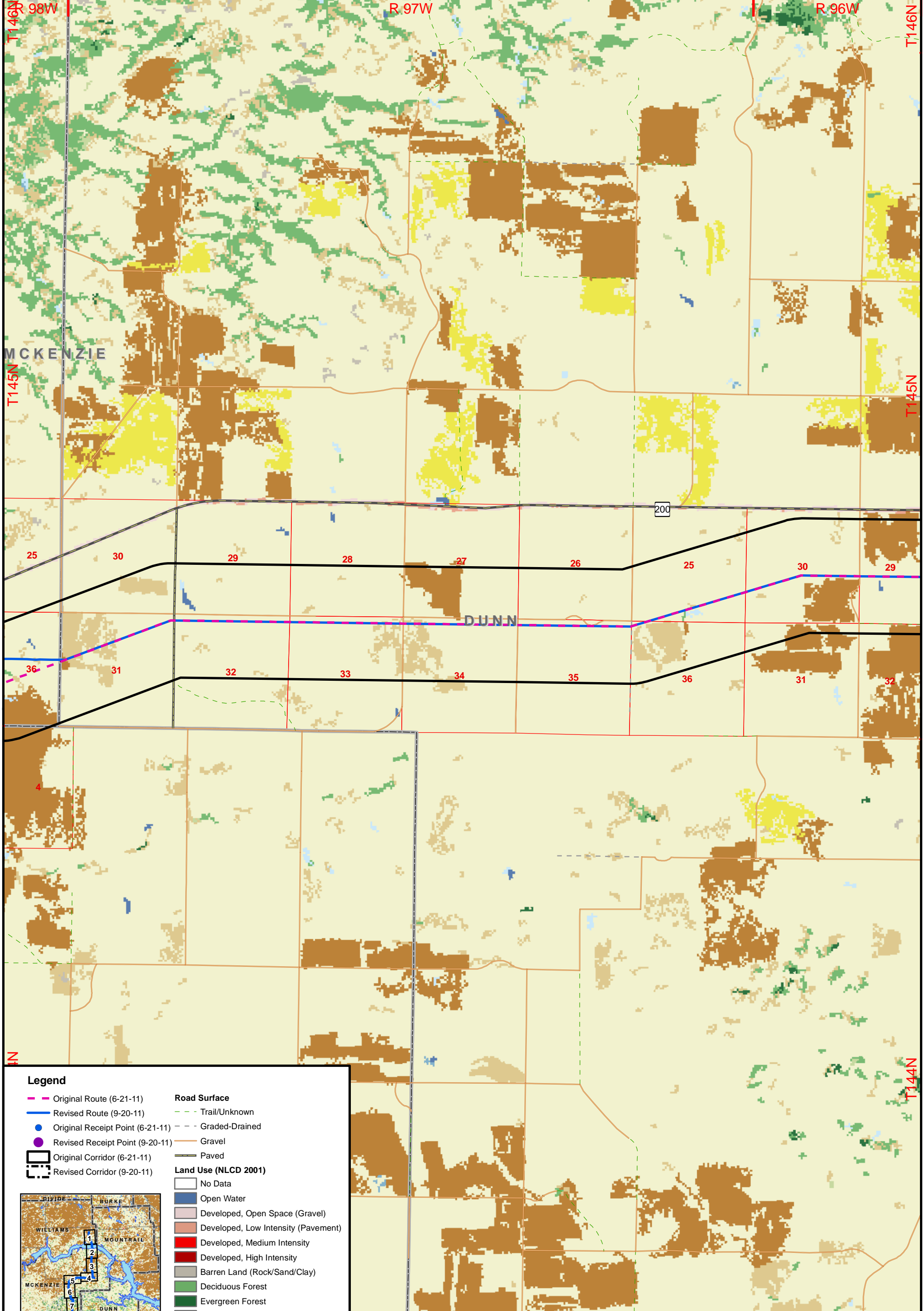


1:48,000
 1 inch = 4,000 feet
 0 2,000 4,000 Feet
 Base Map: National Land Cover Dataset (NLCD) 2001



BakkenLink Pipeline LLC
 Date: September 2011 Rev: 02

**Appendix C
 Figure 8
 Land Use**



Legend

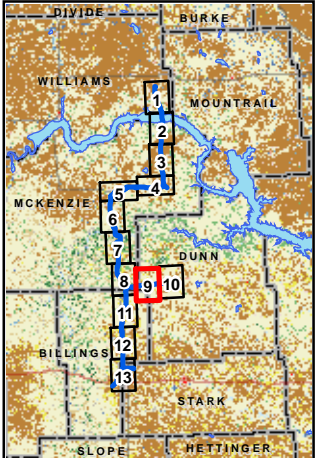
- Original Route (6-21-11)
- Revised Route (9-20-11)
- Original Receipt Point (6-21-11)
- Revised Receipt Point (9-20-11)
- Original Corridor (6-21-11)
- Revised Corridor (9-20-11)

Road Surface

- Trail/Unknown
- Graded-Drained
- Gravel
- Paved

Land Use (NLCD 2001)

- No Data
- Open Water
- Developed, Open Space (Gravel)
- Developed, Low Intensity (Pavement)
- Developed, Medium Intensity
- Developed, High Intensity
- Barren Land (Rock/Sand/Clay)
- Deciduous Forest
- Evergreen Forest
- Mixed Forest
- Shrubland
- Grassland/Herbaceous
- Pasture/Hay
- Cultivated Crops
- Woody Wetlands
- Emergent Herbaceous Wetlands

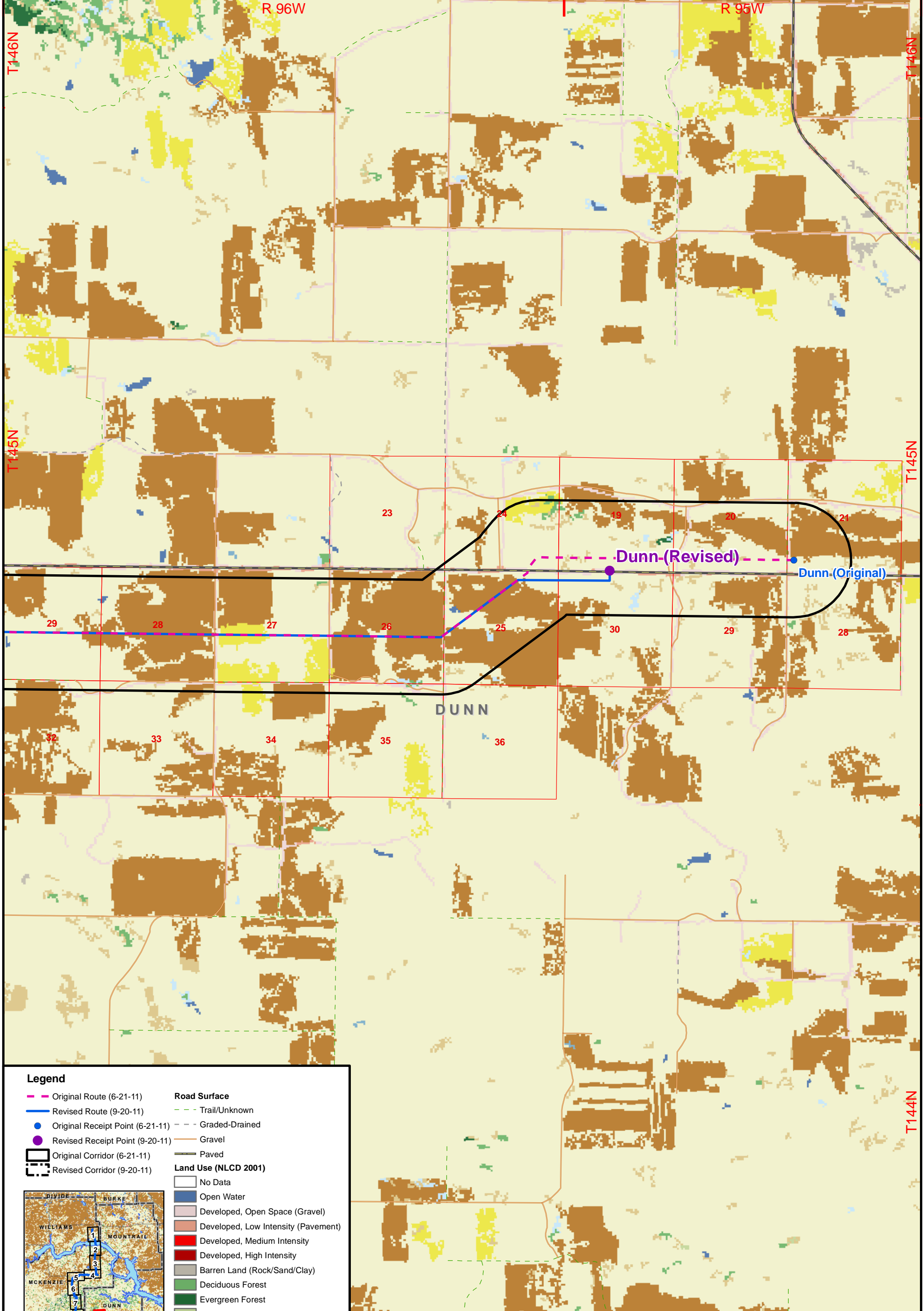


1:48,000
 1 inch = 4,000 feet
 0 2,000 4,000 Feet
 Base Map: National Land Cover Dataset (NLCD) 2001



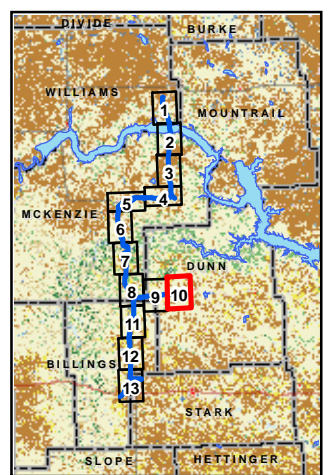
BakkenLink Pipeline LLC
 Date: September 2011 Rev: 02

**Appendix C
 Figure 9
 Land Use**



Legend

Original Route (6-21-11)	Road Surface
Revised Route (9-20-11)	Trail/Unknown
Original Receipt Point (6-21-11)	Graded-Drained
Revised Receipt Point (9-20-11)	Gravel
Original Corridor (6-21-11)	Paved
Revised Corridor (9-20-11)	Land Use (NLCD 2001)
	No Data
	Open Water
	Developed, Open Space (Gravel)
	Developed, Low Intensity (Pavement)
	Developed, Medium Intensity
	Developed, High Intensity
	Barren Land (Rock/Sand/Clay)
	Deciduous Forest
	Evergreen Forest
	Mixed Forest
	Shrubland
	Grassland/Herbaceous
	Pasture/Hay
	Cultivated Crops
	Woody Wetlands
	Emergent Herbaceous Wetlands



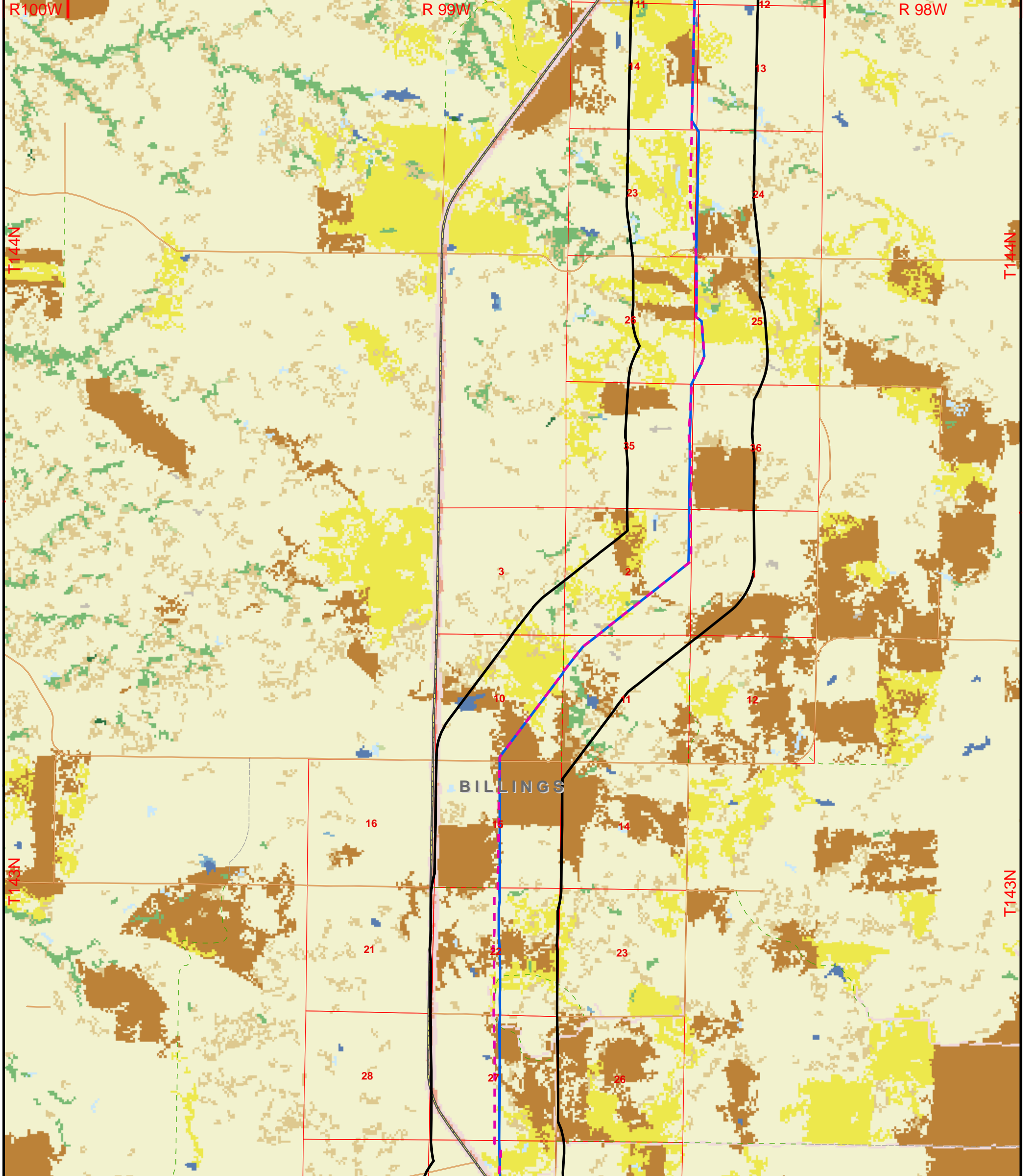
1:48,000
 1 inch = 4,000 feet
 0 2,000 4,000 Feet
 Base Map: National Land Cover Dataset (NLCD) 2001



BakkenLink Pipeline LLC

**Appendix C
 Figure 10
 Land Use**

Date: September 2011 Rev: 02



Legend

- Original Route (6-21-11)
- Revised Route (9-20-11)
- Original Receipt Point (6-21-11)
- Revised Receipt Point (9-20-11)
- Original Corridor (6-21-11)
- Revised Corridor (9-20-11)

Road Surface

- Trail/Unknown
- Graded-Drained
- Gravel
- Paved

Land Use (NLCD 2001)

- No Data
- Open Water
- Developed, Open Space (Gravel)
- Developed, Low Intensity (Pavement)
- Developed, Medium Intensity
- Developed, High Intensity
- Barren Land (Rock/Sand/Clay)
- Deciduous Forest
- Evergreen Forest
- Mixed Forest
- Shrubland
- Grassland/Herbaceous
- Pasture/Hay
- Cultivated Crops
- Woody Wetlands
- Emergent Herbaceous Wetlands

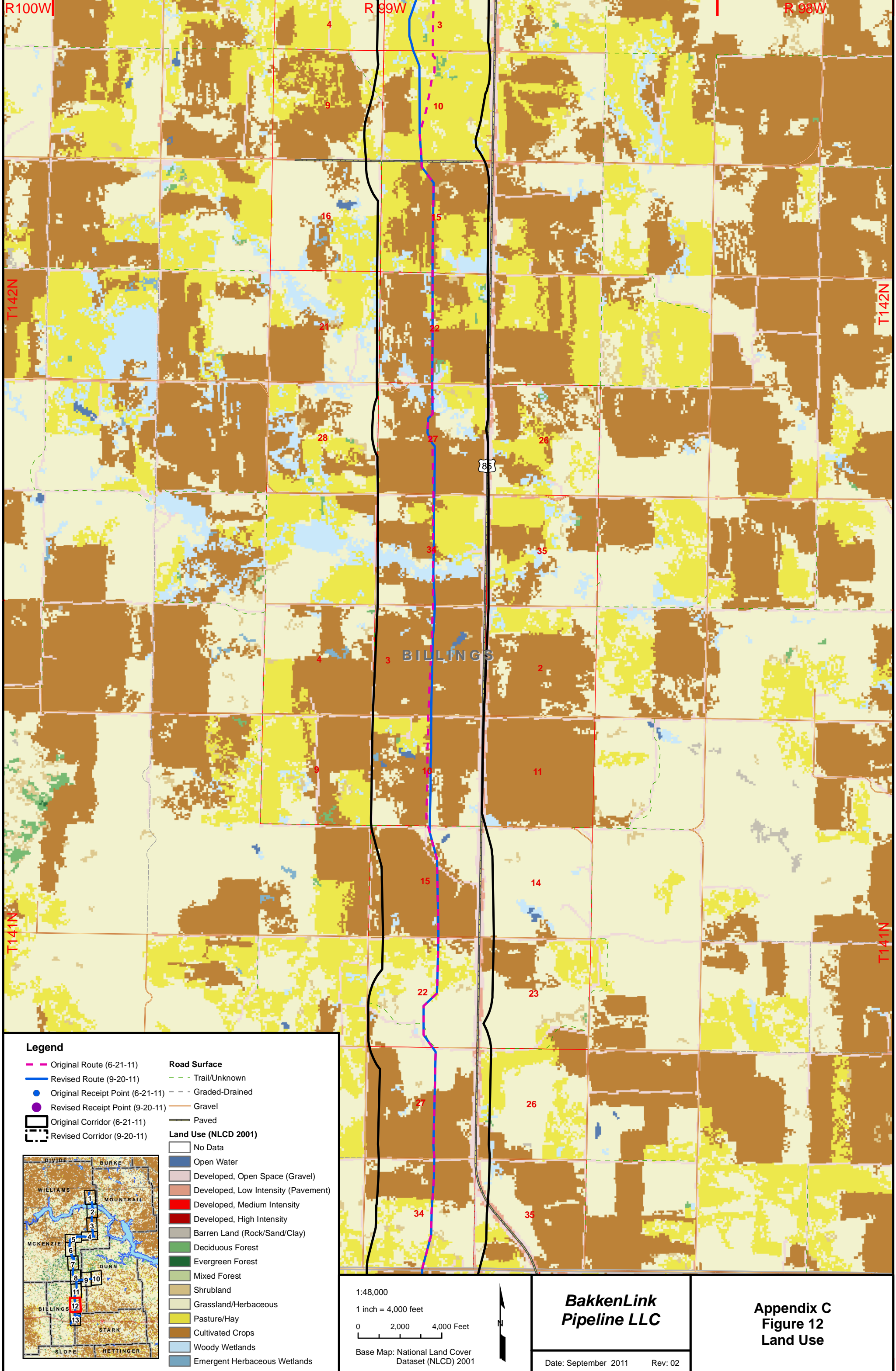
1:48,000
1 inch = 4,000 feet

Base Map: National Land Cover Dataset (NLCD) 2001

BakkenLink Pipeline LLC

Date: September 2011 Rev: 02

**Appendix C
Figure 11
Land Use**



Legend

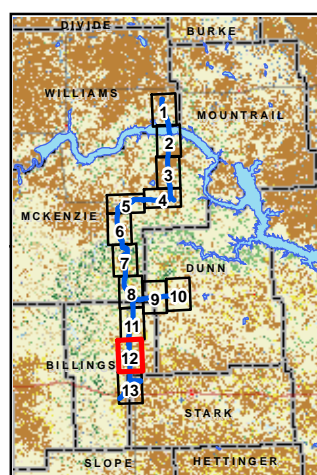
- Original Route (6-21-11)
- Revised Route (9-20-11)
- Original Receipt Point (6-21-11)
- Revised Receipt Point (9-20-11)
- Original Corridor (6-21-11)
- Revised Corridor (9-20-11)

Road Surface

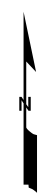
- Trail/Unknown
- Graded-Drained
- Gravel
- Paved

Land Use (NLCD 2001)

- No Data
- Open Water
- Developed, Open Space (Gravel)
- Developed, Low Intensity (Pavement)
- Developed, Medium Intensity
- Developed, High Intensity
- Barren Land (Rock/Sand/Clay)
- Deciduous Forest
- Evergreen Forest
- Mixed Forest
- Shrubland
- Grassland/Herbaceous
- Pasture/Hay
- Cultivated Crops
- Woody Wetlands
- Emergent Herbaceous Wetlands



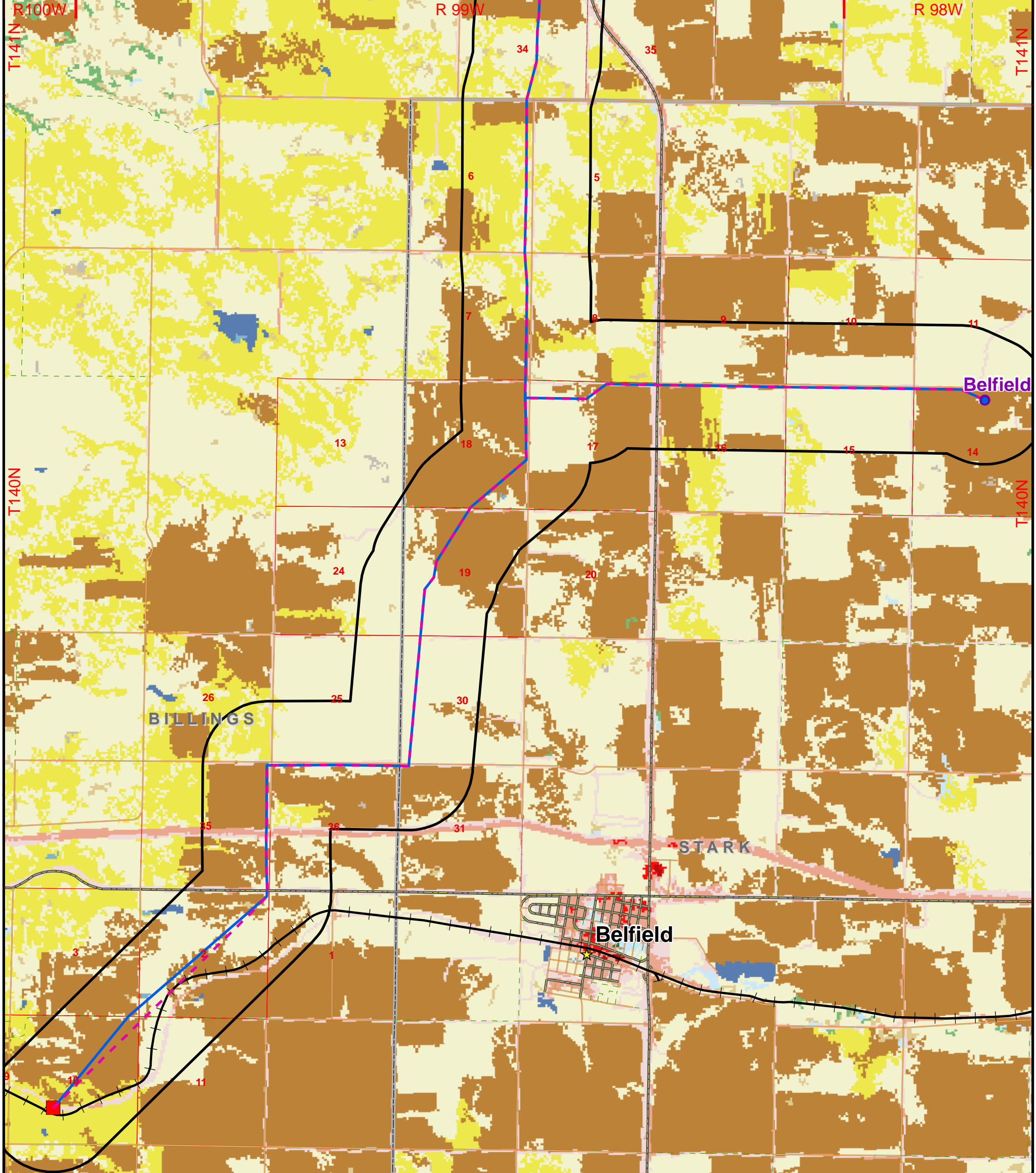
1:48,000
 1 inch = 4,000 feet
 0 2,000 4,000 Feet
 Base Map: National Land Cover Dataset (NLCD) 2001



BakkenLink Pipeline LLC

Date: September 2011 Rev: 02

**Appendix C
 Figure 12
 Land Use**



Legend

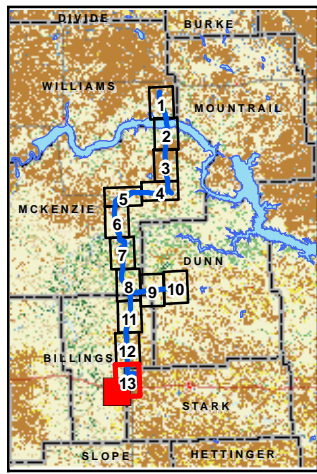
- Original Route (6-21-11)
- Revised Route (9-20-11)
- Original Receipt Point (6-21-11)
- Revised Receipt Point (9-20-11)
- Delivery Point
- Original Corridor (6-21-11)
- Revised Corridor (9-20-11)

Road Surface

- Trail/Unknown
- Graded-Drained
- Gravel
- Paved
- + Railroads

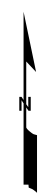
Land Use (NLCD 2001)

- No Data
- Open Water
- Developed, Open Space (Gravel)
- Developed, Low Intensity (Pavement)
- Developed, Medium Intensity
- Developed, High Intensity
- Barren Land (Rock/Sand/Clay)
- Deciduous Forest
- Evergreen Forest
- Mixed Forest
- Shrubland
- Grassland/Herbaceous
- Pasture/Hay
- Cultivated Crops
- Woody Wetlands
- Emergent Herbaceous Wetlands



1:48,000
 1 inch = 4,000 feet
 0 2,000 4,000 Feet

Base Map: National Land Cover Dataset (NLCD) 2001



BakkenLink Pipeline LLC

**Appendix C
 Figure 13
 Land Use**

Date: September 2011 Rev: 02