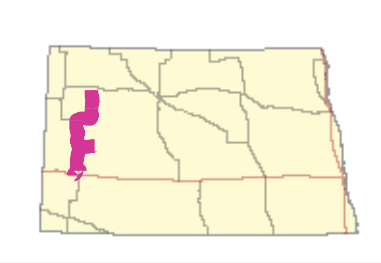



Legend

- BakkenLink Pipeline Route
- BakkenLink Pipeline Receipt Points
- BakkenLink Pipeline Delivery Point
- Figure Index
- Interstate Highway
- US Highway
- State Highway



1:633,600
 1 inch = 10 miles
 0 5 10 Miles

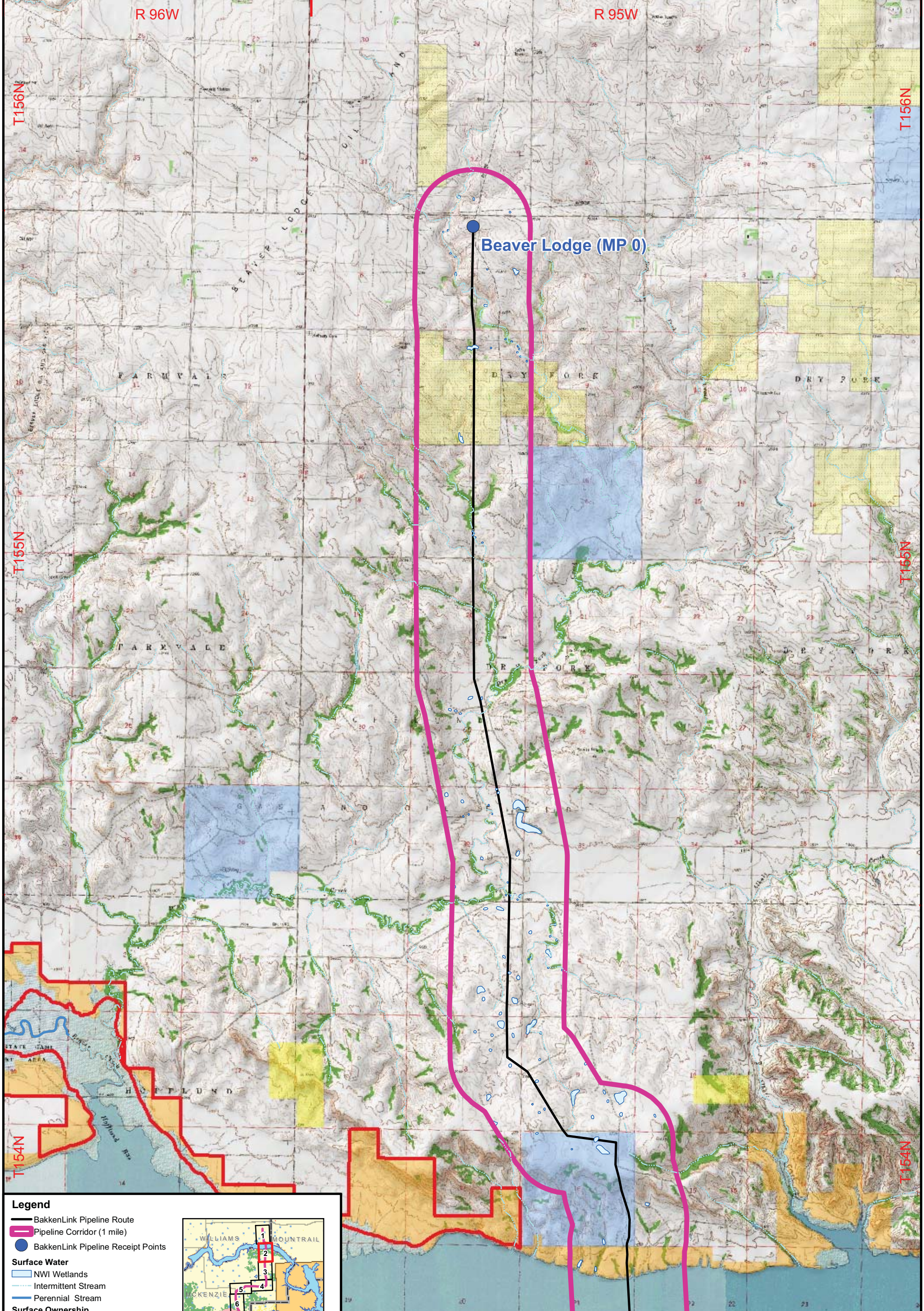
Base Map: ND GIS Hub
 250K USGS Topography



BakkenLink Pipeline LLC

Date: June 2011 Rev: 01

**Appendix F
 Index Sheet
 Topography &
 Managed Lands**



Legend

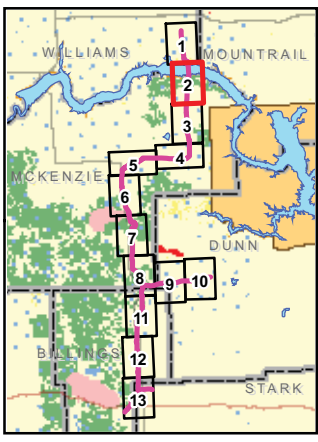
- BakkenLink Pipeline Route
- Pipeline Corridor (1 mile)
- BakkenLink Pipeline Receipt Points

Surface Water

- NWI Wetlands
- Intermittent Stream
- Perennial Stream

Surface Ownership

- Army Corps of Engineers
- Bureau of Land Management
- National Park Service
- ND State Land Department
- ND Game and Fish WMA
- ND Game and Fish PLOTS
- Private
- US Forest Service



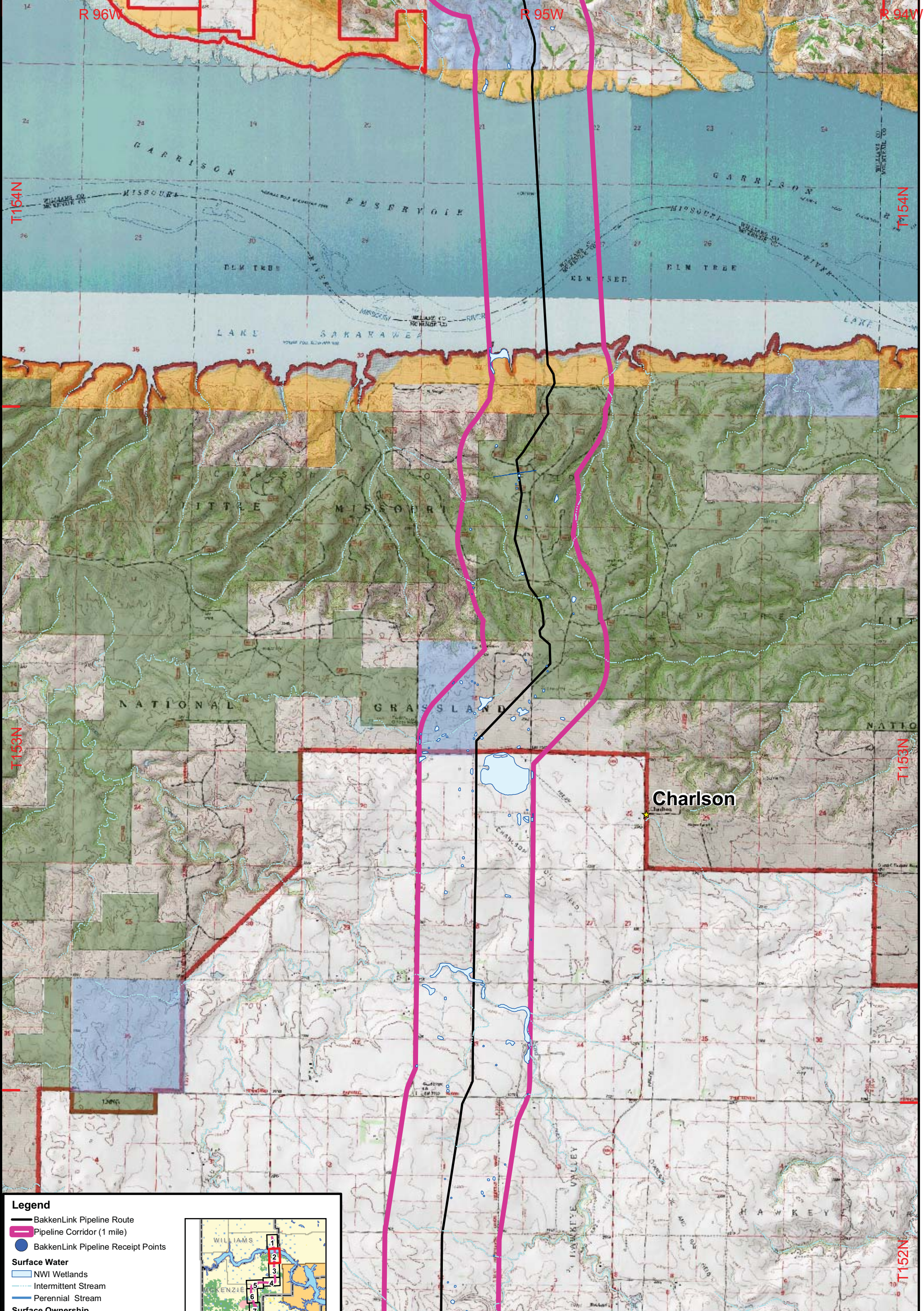
1:48,000
 1 inch = 4,000 feet
 0 2,000 4,000 Feet
 Base Map: USGS Stanley 100K Topographic Image



BakkenLink Pipeline LLC

Date: June 2011 Rev: 01

**Appendix F
 Figure 1
 Topography &
 Managed Lands**



Legend

- BakkenLink Pipeline Route
- Pipeline Corridor (1 mile)
- BakkenLink Pipeline Receipt Points

Surface Water

- NWI Wetlands
- Intermittent Stream
- Perennial Stream

Surface Ownership

- Army Corps of Engineers
- Bureau of Land Management
- National Park Service
- ND State Land Department
- ND Game and Fish WMA
- ND Game and Fish PLOTS
- Private
- US Forest Service

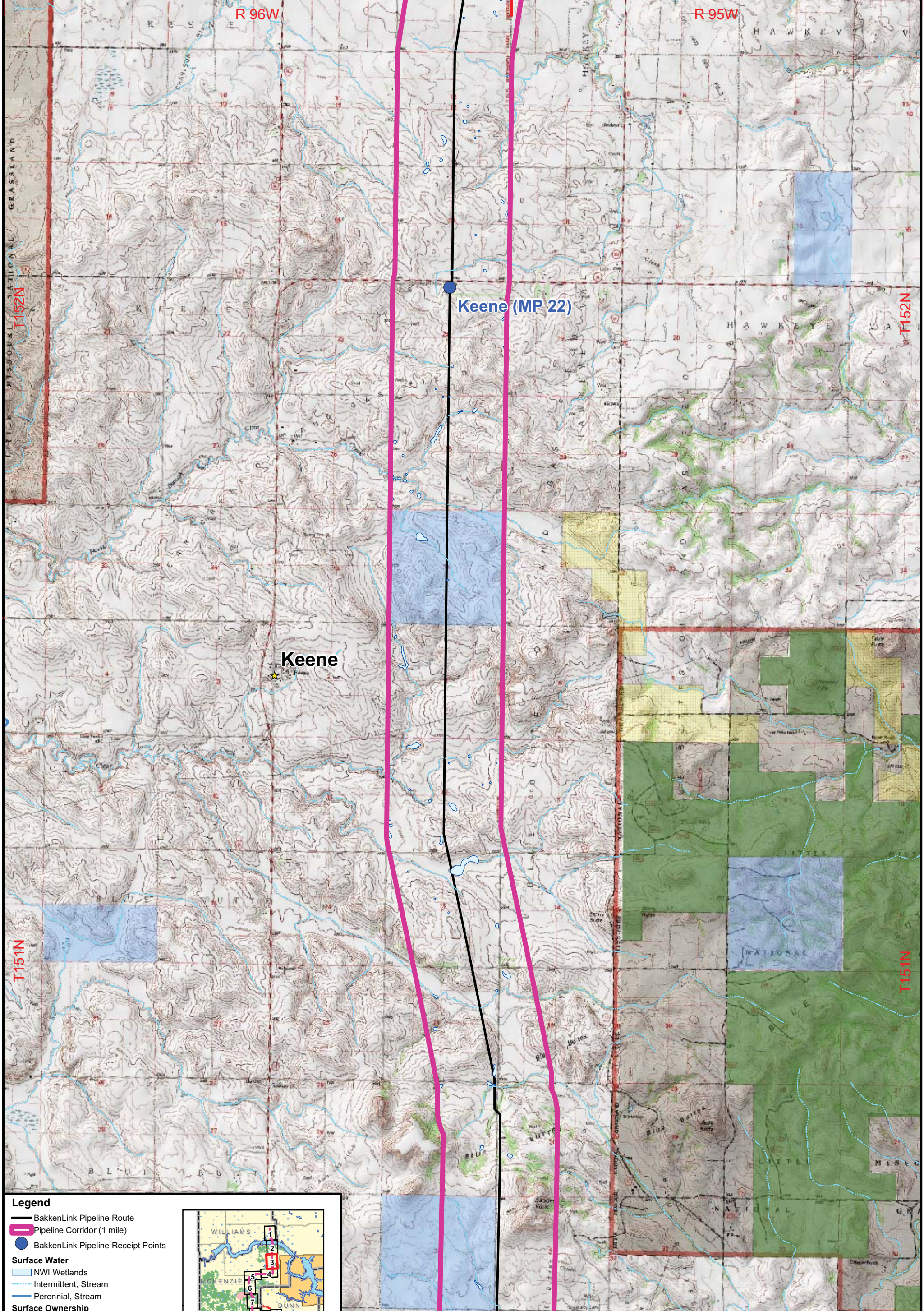
1:48,000
 1 inch = 4,000 feet
 0 2,000 4,000 Feet

Base Map: USGS Stanley 100K Topographic Image

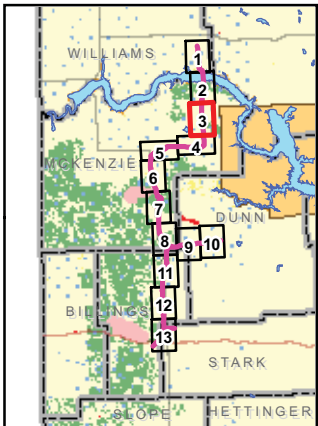
BakkenLink Pipeline LLC

Date: June 2011 Rev: 01

**Appendix F
 Figure 2
 Topography &
 Managed Lands**



- Legend**
- BakkenLink Pipeline Route
 - Pipeline Corridor (1 mile)
 - BakkenLink Pipeline Receipt Points
 - Surface Water**
 - NWI Wetlands
 - Intermittent, Stream
 - Perennial, Stream
 - Surface Ownership**
 - Army Corps of Engineers
 - Bureau of Land Management
 - National Park Service
 - ND State Land Department
 - ND Game and Fish WMA
 - ND Game and Fish PLOTS
 - Private
 - US Forest Service



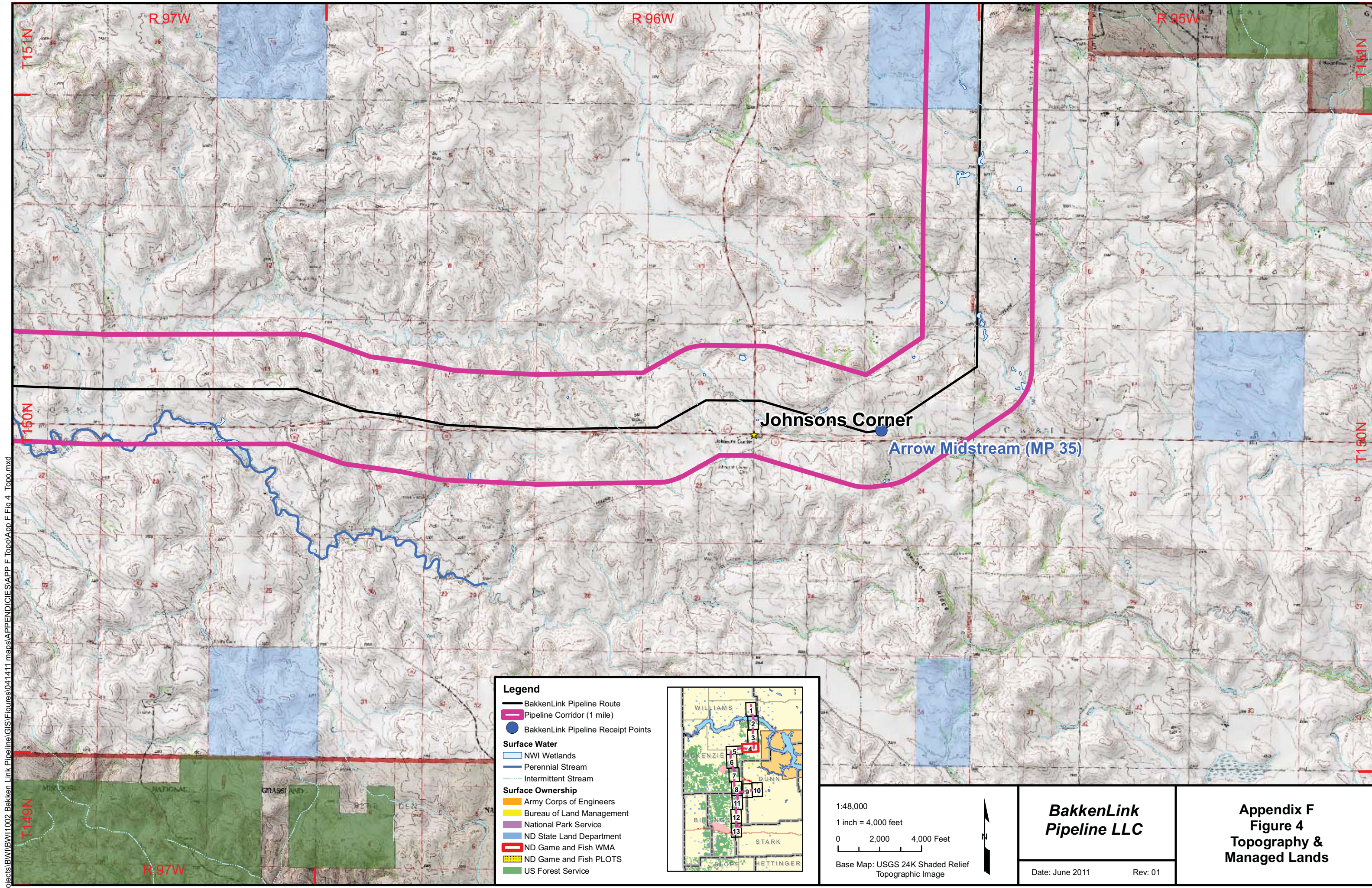
1:48,000
 1 inch = 4,000 feet
 0 2,000 4,000 Feet
 Base Map: USGS Stanley 100K Topographic Image



BakkenLink Pipeline LLC

Date: June 2011 Rev: 01

**Appendix F
 Figure 3
 Topography &
 Managed Lands**



R:\projects\BWI\BWI1002 Bakken Link Pipeline\GIS\Figures\041411 maps\APPENDICES\APP F Topo\APP F Fig 4 Topo.mxd

Legend

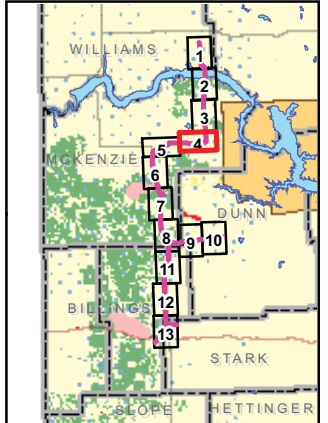
- BakkenLink Pipeline Route
- Pipeline Corridor (1 mile)
- BakkenLink Pipeline Receipt Points

Surface Water

- NWI Wetlands
- Perennial Stream
- Intermittent Stream

Surface Ownership

- Army Corps of Engineers
- Bureau of Land Management
- National Park Service
- ND State Land Department
- ND Game and Fish WMA
- ND Game and Fish PLOTS
- US Forest Service

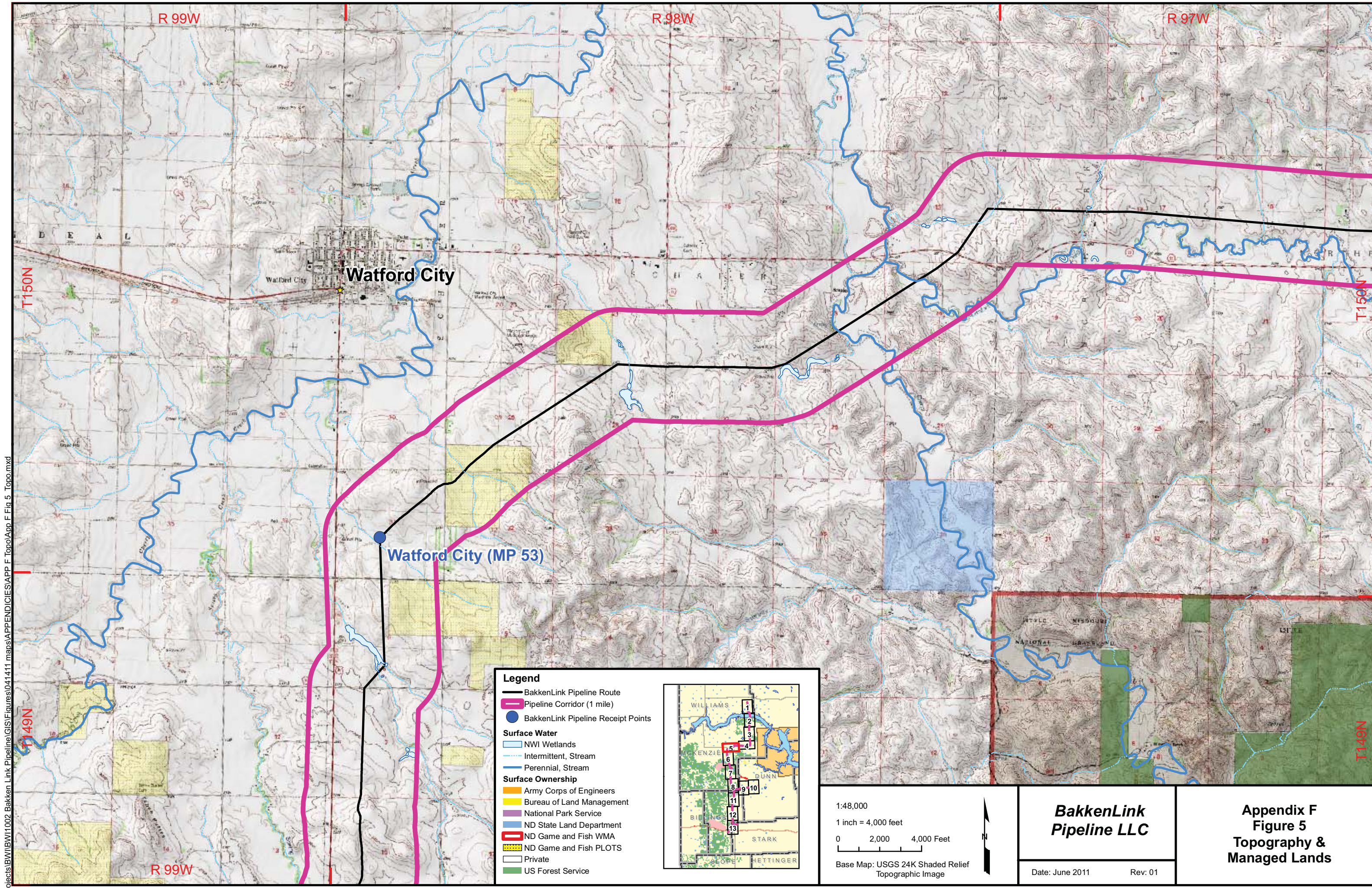


1:48,000
 1 inch = 4,000 feet
 0 2,000 4,000 Feet
 Base Map: USGS 24K Shaded Relief Topographic Image



BakkenLink Pipeline LLC
 Date: June 2011 Rev: 01

**Appendix F
 Figure 4
 Topography &
 Managed Lands**



R:\projects\BW\1002 Bakken Link Pipeline\GIS\Figures\041411 maps\APPENDICES\APP F Topo\APP F Fig 5 Topo.mxd

Legend

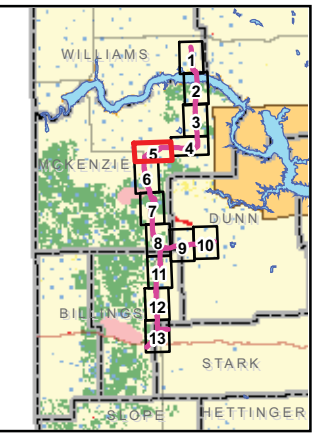
- BakkenLink Pipeline Route
- Pipeline Corridor (1 mile)
- BakkenLink Pipeline Receipt Points

Surface Water

- NWI Wetlands
- Intermittent, Stream
- Perennial, Stream

Surface Ownership

- Army Corps of Engineers
- Bureau of Land Management
- National Park Service
- ND State Land Department
- ND Game and Fish WMA
- ND Game and Fish PLOTS
- Private
- US Forest Service



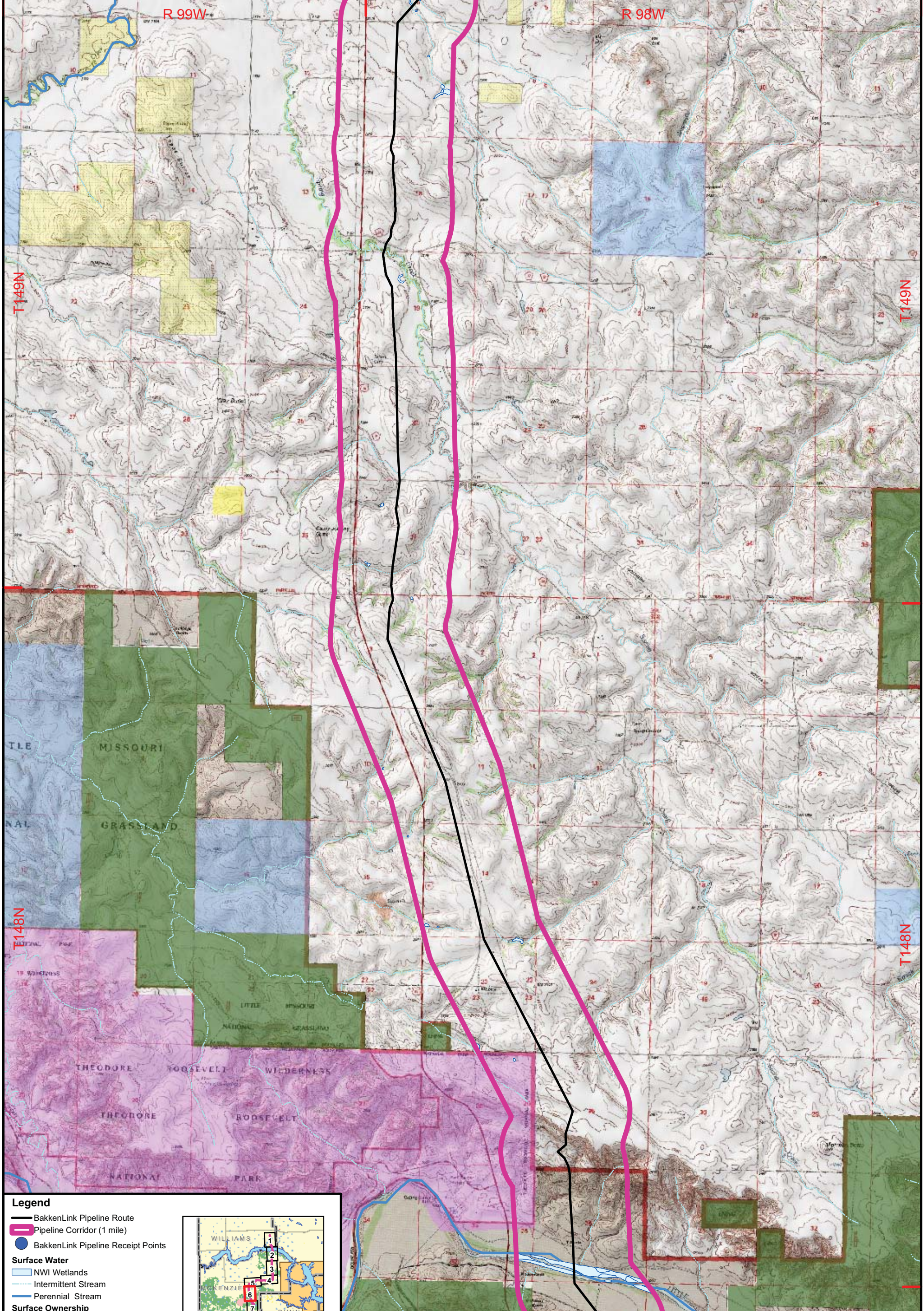
1:48,000
 1 inch = 4,000 feet
 0 2,000 4,000 Feet
 Base Map: USGS 24K Shaded Relief Topographic Image



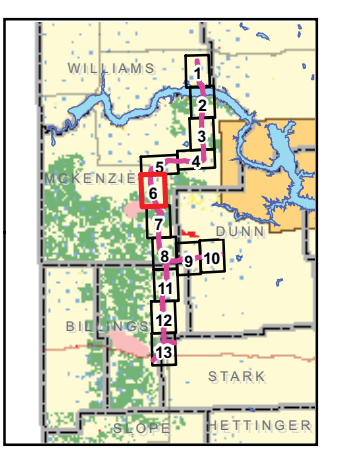
BakkenLink Pipeline LLC

Date: June 2011 Rev: 01

**Appendix F
 Figure 5
 Topography &
 Managed Lands**



- Legend**
- BakkenLink Pipeline Route
 - Pipeline Corridor (1 mile)
 - BakkenLink Pipeline Receipt Points
 - Surface Water**
 - NWI Wetlands
 - Intermittent Stream
 - Perennial Stream
 - Surface Ownership**
 - Army Corps of Engineers
 - Bureau of Land Management
 - National Park Service
 - ND State Land Department
 - ND Game and Fish WMA
 - ND Game and Fish PLOTS
 - Private
 - US Forest Service



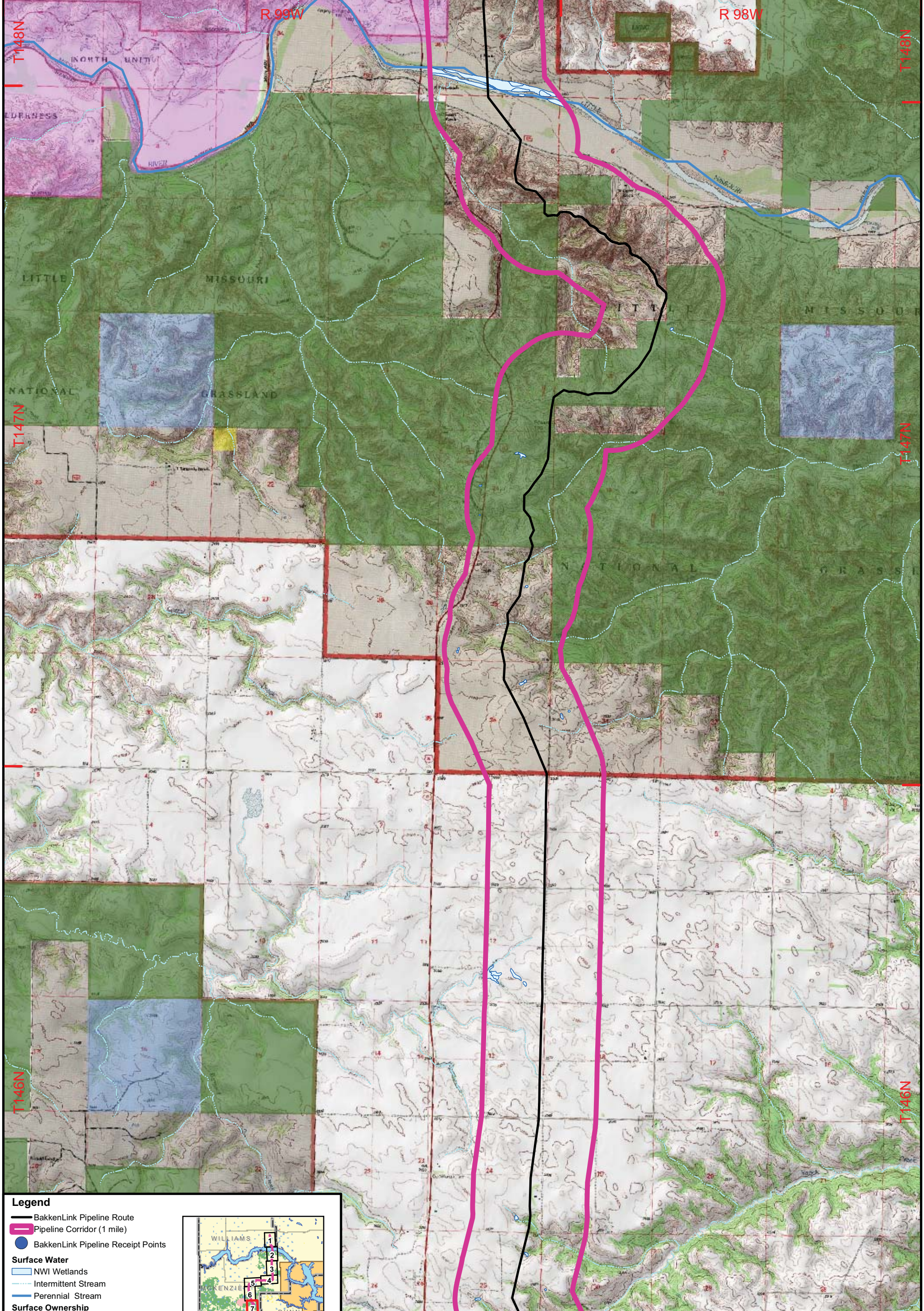
1:48,000
 1 inch = 4,000 feet
 0 2,000 4,000 Feet

Base Map: USGS 24K Shaded Relief Topographic Image

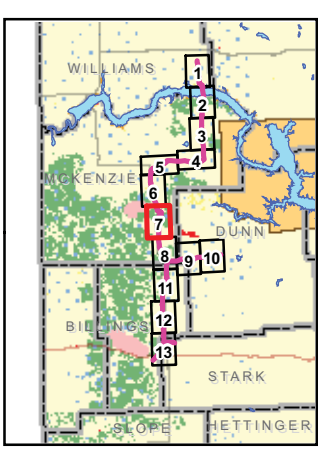
BakkenLink Pipeline LLC

Date: June 2011 Rev: 01

**Appendix F
 Figure 6
 Topography &
 Managed Lands**



- Legend**
- BakkenLink Pipeline Route
 - █ Pipeline Corridor (1 mile)
 - BakkenLink Pipeline Receipt Points
 - Surface Water**
 - ▒ NWI Wetlands
 - Intermittent Stream
 - Perennial Stream
 - Surface Ownership**
 - █ Army Corps of Engineers
 - █ Bureau of Land Management
 - █ National Park Service
 - █ ND State Land Department
 - █ ND Game and Fish WMA
 - █ ND Game and Fish PLOTS
 - ▒ Private
 - █ US Forest Service



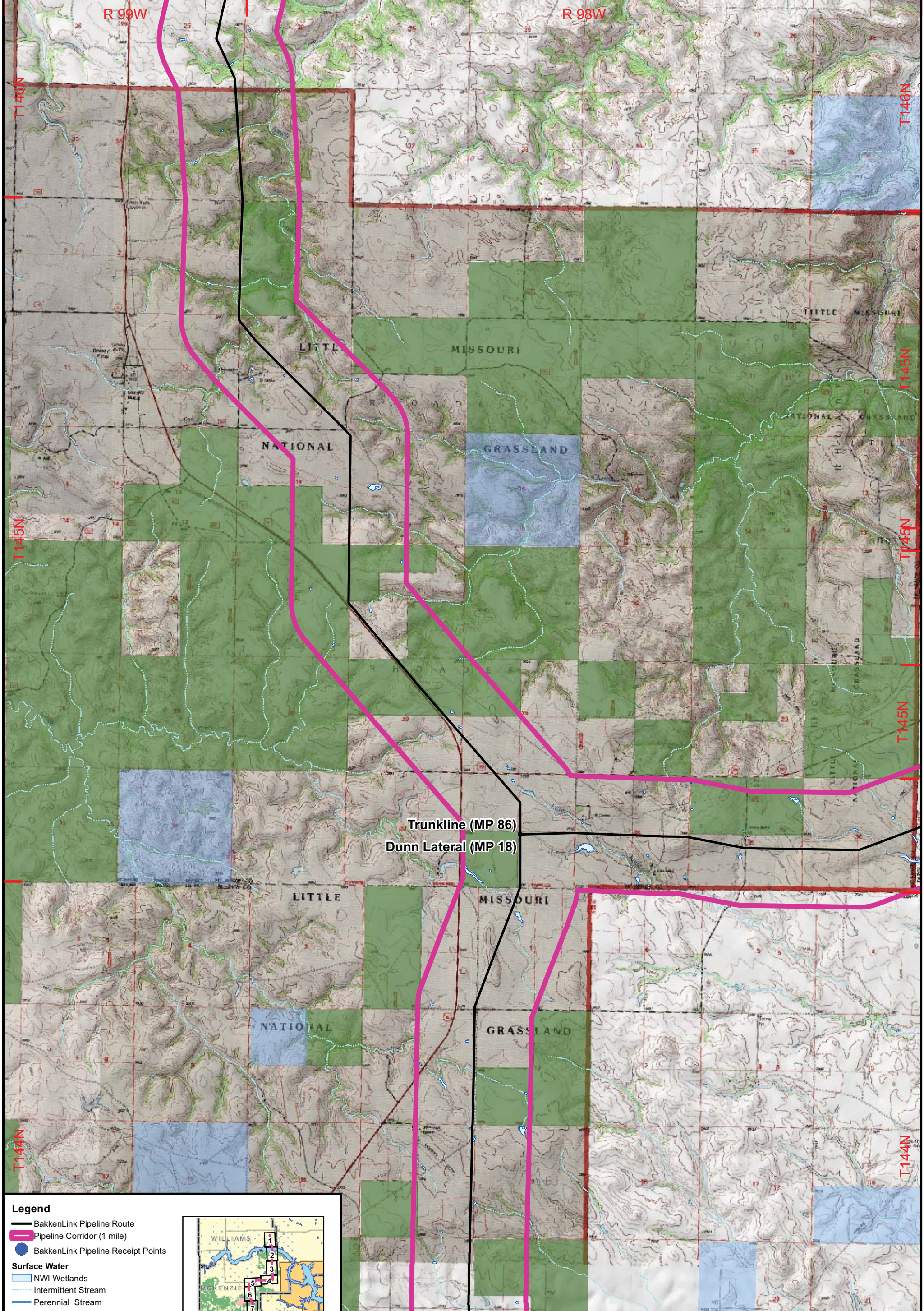
1:48,000
 1 inch = 4,000 feet
 0 2,000 4,000 Feet
 Base Map: USGS 24K Shaded Relief Topographic Image



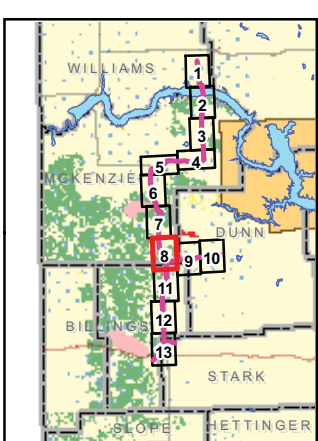
BakkenLink Pipeline LLC

Date: June 2011 Rev: 01

**Appendix F
 Figure 7
 Topography &
 Managed Lands**

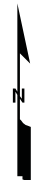


- Legend**
- BakkenLink Pipeline Route
 - Pipeline Corridor (1 mile)
 - BakkenLink Pipeline Receipt Points
- Surface Water**
- NWI Wetlands
 - Intermittent Stream
 - Perennial Stream
- Surface Ownership**
- Army Corps of Engineers
 - Bureau of Land Management
 - National Park Service
 - ND State Land Department
 - ND Game and Fish WMA
 - ND Game and Fish PLOTS
 - Private
 - US Forest Service



1:48,000
 1 inch = 4,000 feet
 0 2,000 4,000 Feet

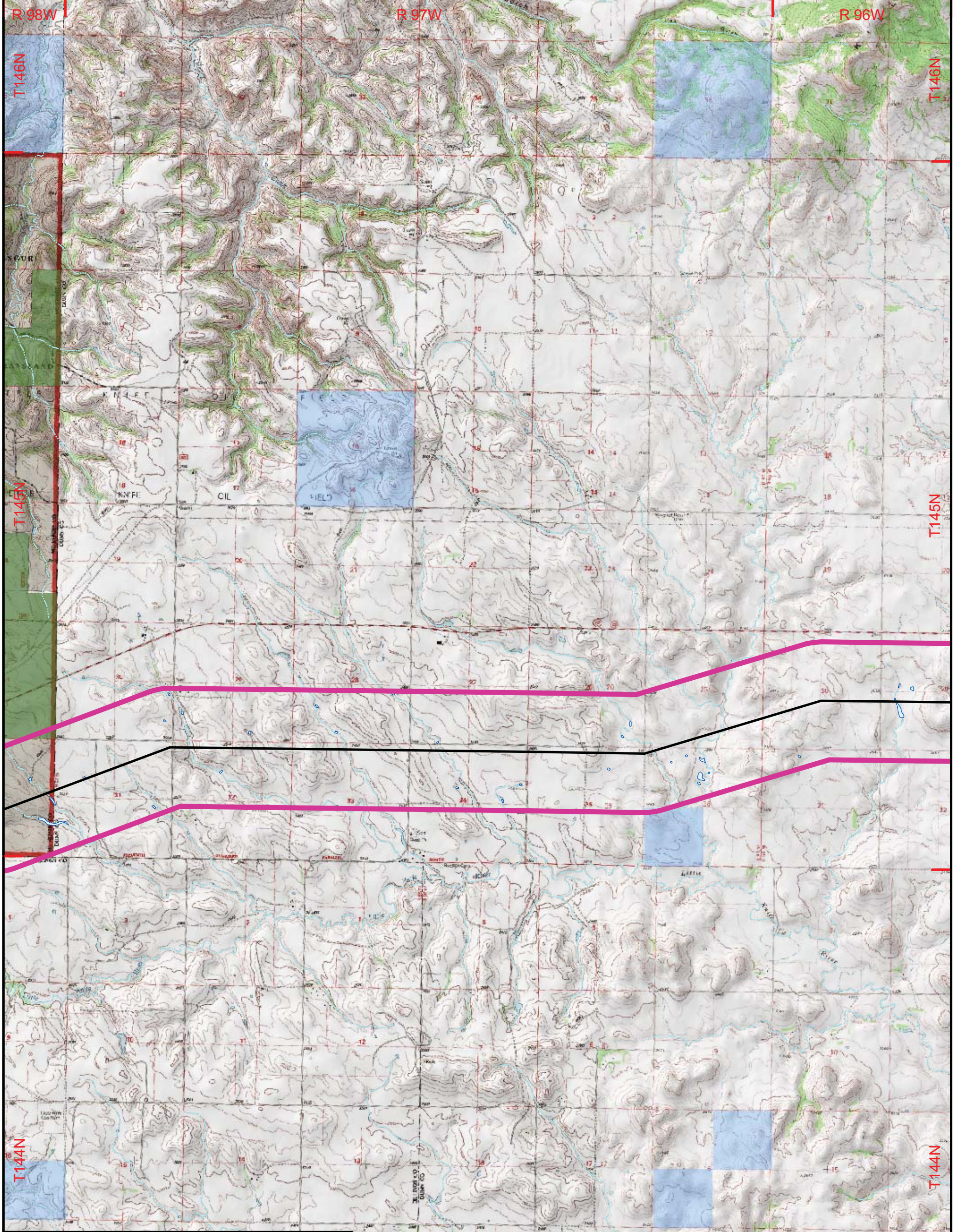
Base Map: USGS 24K Shaded Relief Topographic Image



BakkenLink Pipeline LLC

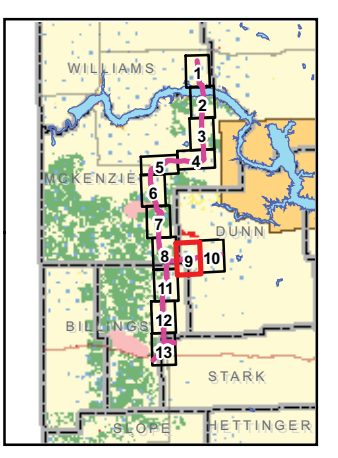
Date: June 2011 Rev: 01

**Appendix F
 Figure 8
 Topography & Managed Lands**



Legend

- BakkenLink Pipeline Route
- Pipeline Corridor (1 mile)
- BakkenLink Pipeline Receipt Points
- Surface Water**
- NWI Wetlands
- Intermittent Stream
- Perennial Stream
- Surface Ownership**
- Army Corps of Engineers
- Bureau of Land Management
- National Park Service
- ND State Land Department
- ND Game and Fish WMA
- ND Game and Fish PLOTS
- Private
- US Forest Service



1:48,000
 1 inch = 4,000 feet
 0 2,000 4,000 Feet

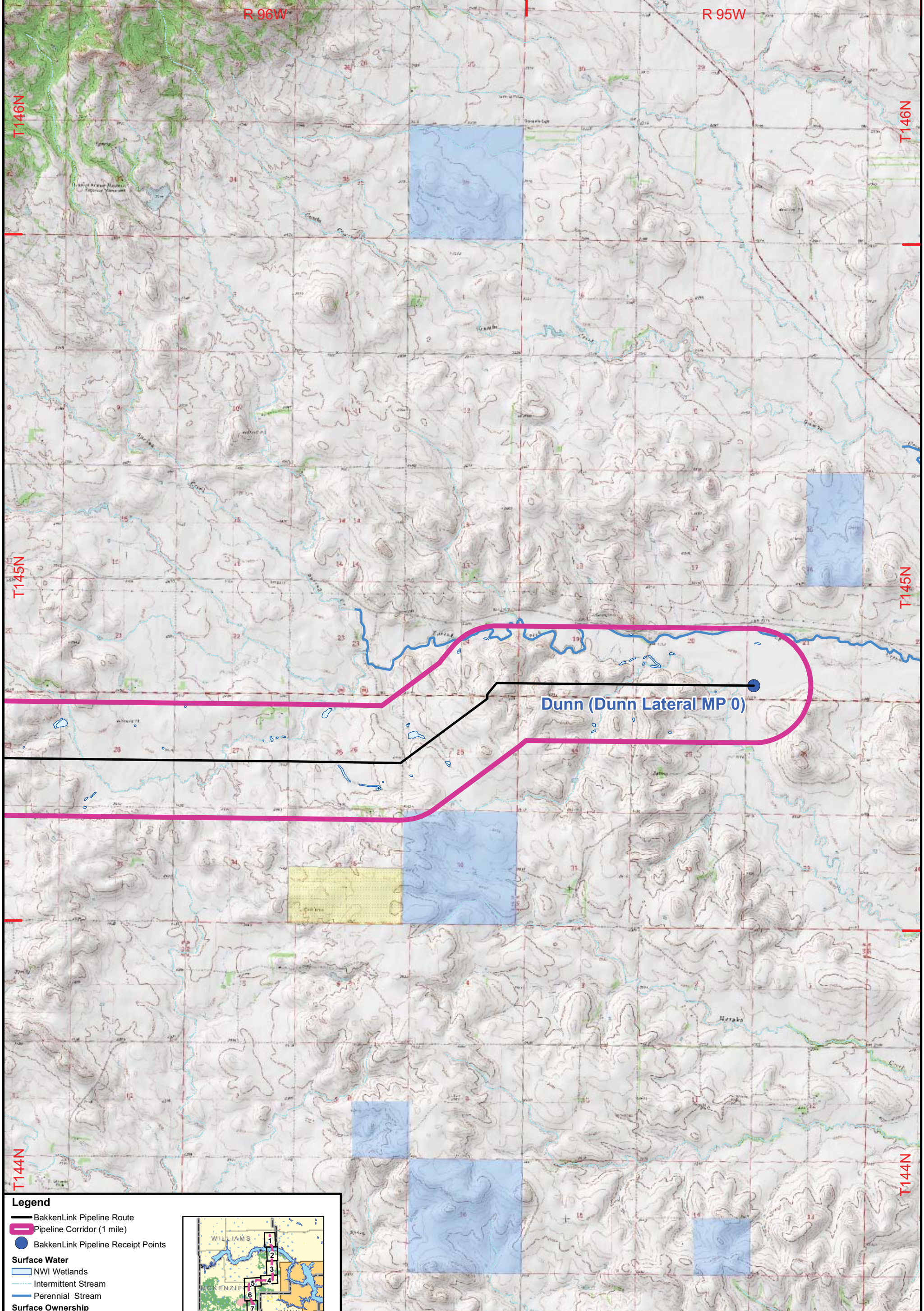


Base Map: USGS 24K Shaded Relief Topographic Image

BakkenLink Pipeline LLC

Date: June 2011 Rev: 01

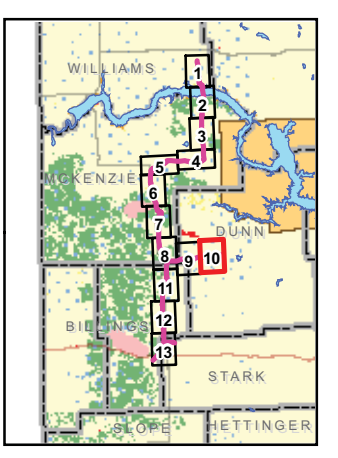
**Appendix F
 Figure 9
 Topography &
 Managed Lands**



- Legend**
- BakkenLink Pipeline Route
 - Pipeline Corridor (1 mile)
 - BakkenLink Pipeline Receipt Points

- Surface Water**
- NWI Wetlands
 - Intermittent Stream
 - Perennial Stream

- Surface Ownership**
- Army Corps of Engineers
 - Bureau of Land Management
 - National Park Service
 - ND State Land Department
 - ND Game and Fish WMA
 - ND Game and Fish PLOTS
 - Private
 - US Forest Service



1:48,000
 1 inch = 4,000 feet
 0 2,000 4,000 Feet

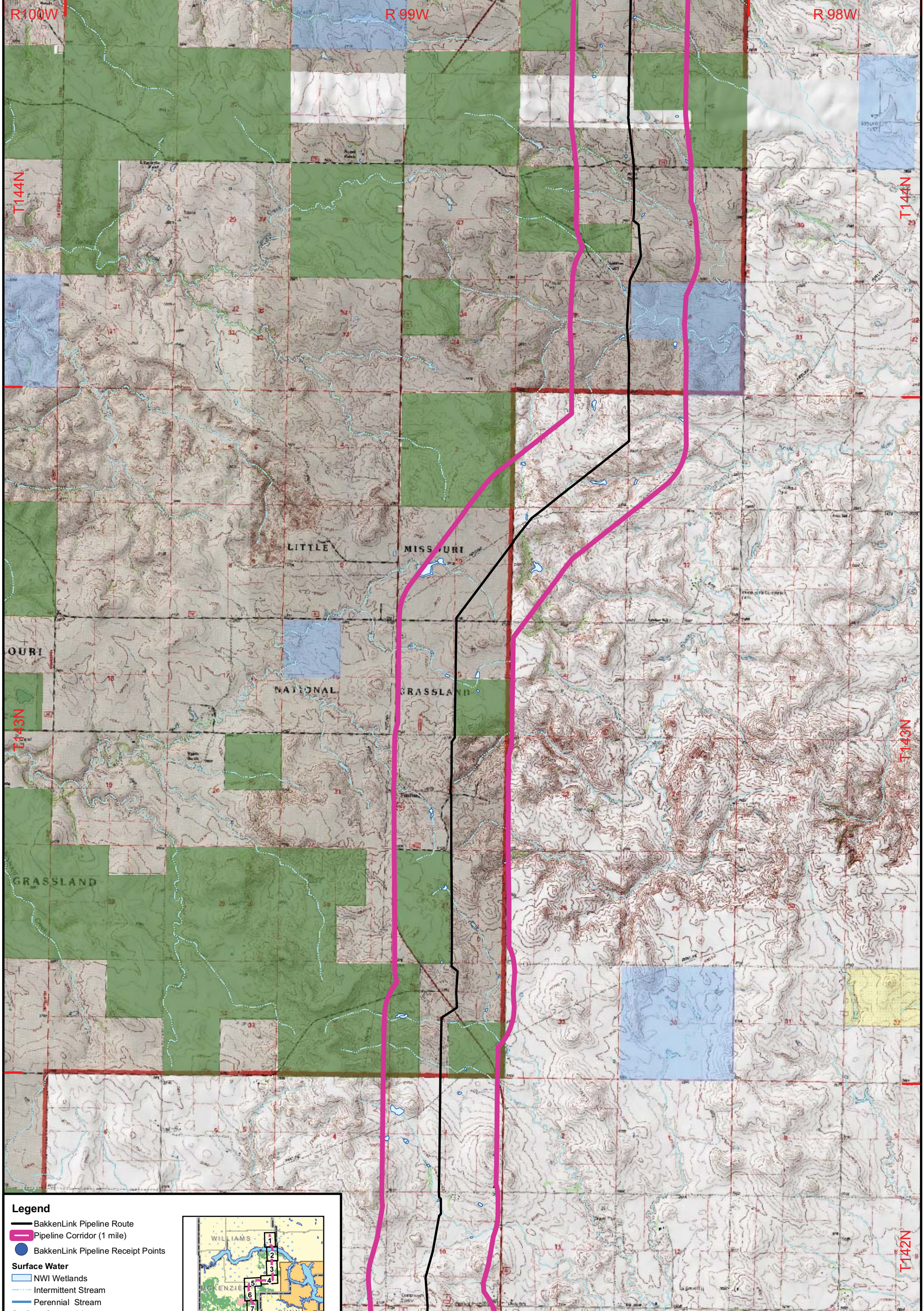
Base Map: USGS 24K Shaded Relief Topographic Image



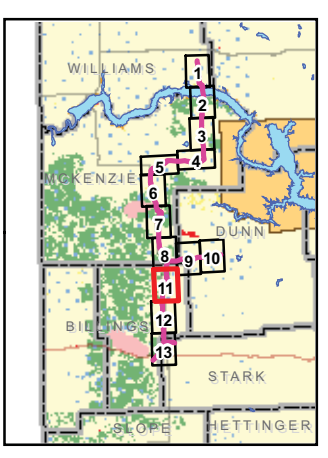
BakkenLink Pipeline LLC

Date: June 2011 Rev: 01

**Appendix F
 Figure 10
 Topography &
 Managed Lands**



- Legend**
- BakkenLink Pipeline Route
 - Pipeline Corridor (1 mile)
 - BakkenLink Pipeline Receipt Points
 - Surface Water**
 - NWI Wetlands
 - Intermittent Stream
 - Perennial Stream
 - Surface Ownership**
 - Army Corps of Engineers
 - Bureau of Land Management
 - National Park Service
 - ND State Land Department
 - ND Game and Fish WMA
 - ND Game and Fish PLOTS
 - Private
 - US Forest Service



1:48,000
 1 inch = 4,000 feet
 0 2,000 4,000 Feet

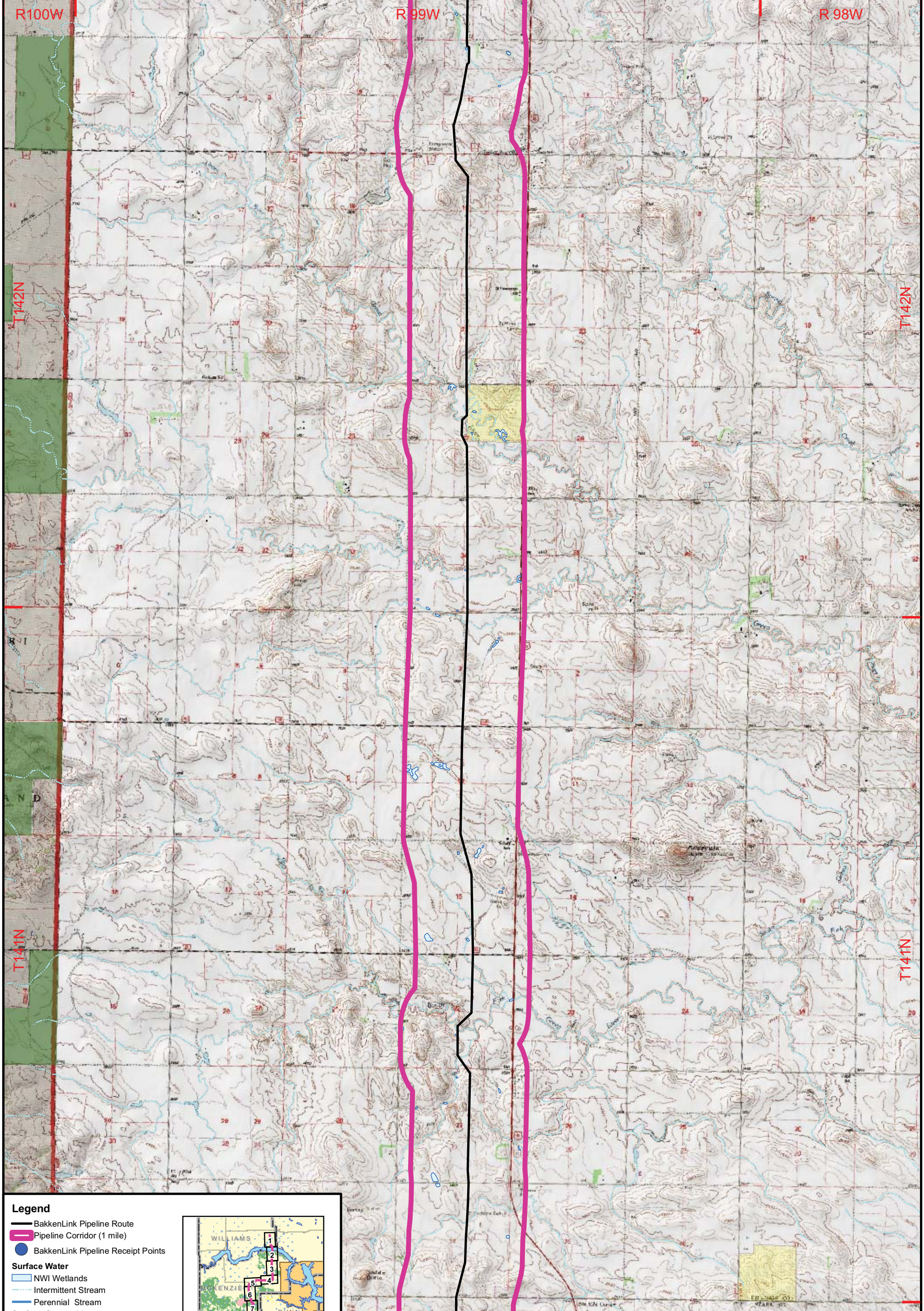
Base Map: USGS 24K Shaded Relief Topographic Image



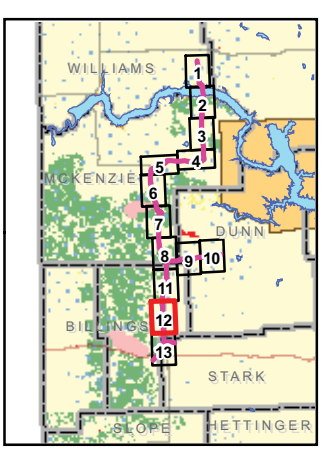
BakkenLink Pipeline LLC

Date: June 2011 Rev: 01

**Appendix F
 Figure 11
 Topography &
 Managed Lands**



- Legend**
- BakkenLink Pipeline Route
 - Pipeline Corridor (1 mile)
 - BakkenLink Pipeline Receipt Points
 - Surface Water**
 - NWI Wetlands
 - Intermittent Stream
 - Perennial Stream
 - Surface Ownership**
 - Army Corps of Engineers
 - Bureau of Land Management
 - National Park Service
 - ND State Land Department
 - ND Game and Fish WMA
 - ND Game and Fish PLOTS
 - Private
 - US Forest Service



1:48,000
 1 inch = 4,000 feet
 0 2,000 4,000 Feet

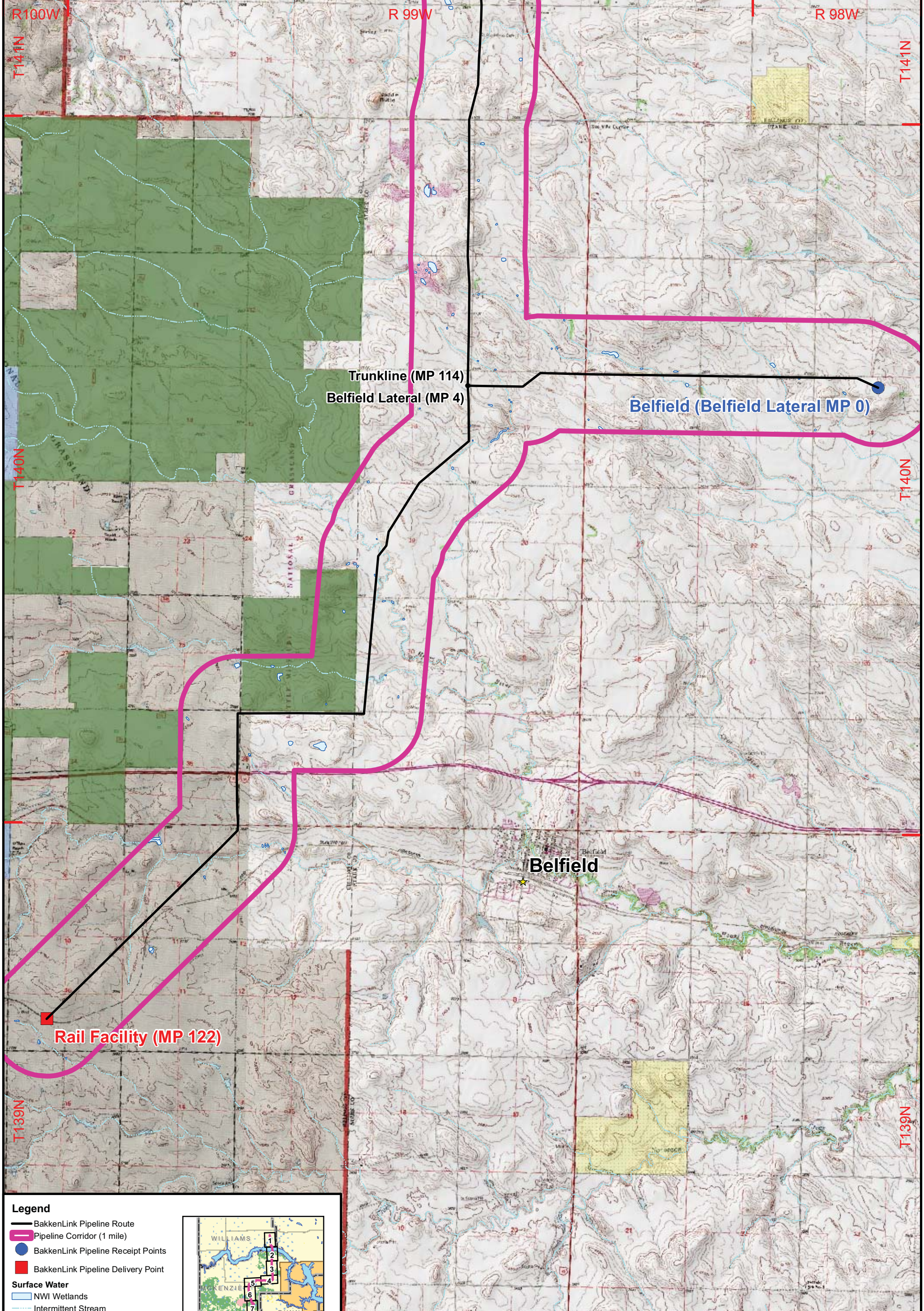
Base Map: USGS 24K Shaded Relief Topographic Image



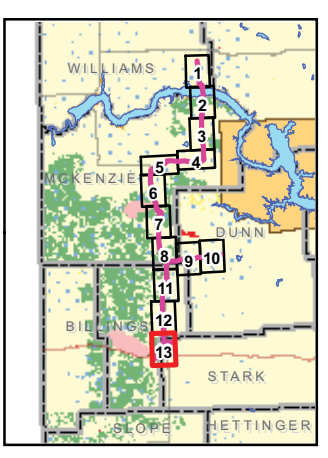
BakkenLink Pipeline LLC

Date: June 2011 Rev: 01

**Appendix F
 Figure 12
 Topography &
 Managed Lands**



- Legend**
- BakkenLink Pipeline Route
 - Pipeline Corridor (1 mile)
 - BakkenLink Pipeline Receipt Points
 - BakkenLink Pipeline Delivery Point
- Surface Water**
- NWI Wetlands
 - Intermittent Stream
 - Perennial Stream
 - Bureau of Land Management
 - ND State Land Department
 - ND Game and Fish WMA
 - ND Game and Fish PLOTS
 - Private
 - US Forest Service



1:48,000
 1 inch = 4,000 feet
 0 2,000 4,000 Feet

Base Map: USGS 24K Shaded Relief Topographic Image



BakkenLink Pipeline LLC

Date: June 2011 Rev: 01

**Appendix F
 Figure 13
 Topography &
 Managed Lands**