

**Legend**

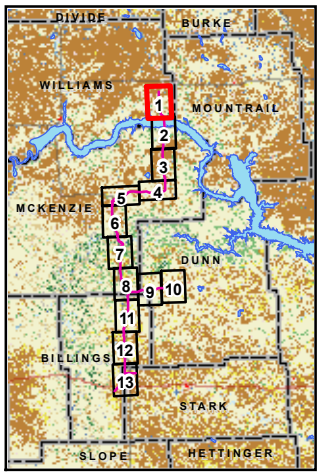
- BakkenLink Pipeline Route
- Pipeline Corridor (1 mile)
- BakkenLink Pipeline Receipt Points
- ★ Cities
- County Boundary

**Road Surface**

- Trail/Unknown
- Graded-Drained
- Gravel
- Paved

**Land Use (NLCD 2001)**

- No Data
- Open Water
- Developed, Open Space (Gravel)
- Developed, Low Intensity (Pavement)
- Developed, Medium Intensity
- Developed, High Intensity
- Barren Land (Rock/Sand/Clay)
- Deciduous Forest
- Evergreen Forest
- Mixed Forest
- Shrubland
- Grassland/Herbaceous
- Pasture/Hay
- Cultivated Crops
- Woody Wetlands
- Emergent Herbaceous Wetlands



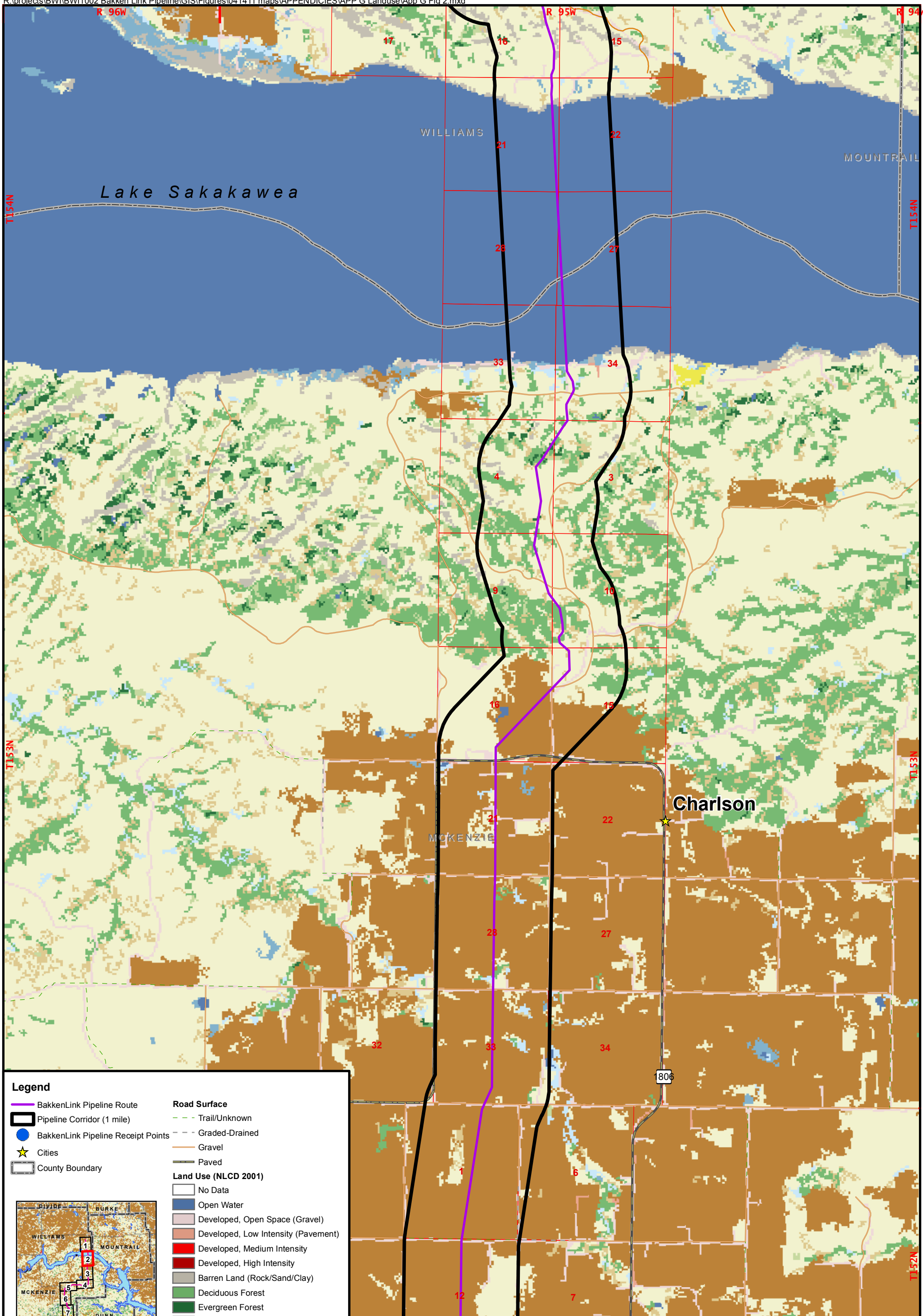
1:48,000  
 1 inch = 4,000 feet  
 0 2,000 4,000 Feet  
 Base Map: National Land Cover Dataset (NLCD) 2001



**BakkenLink Pipeline LLC**

Date: June 2011 Rev: 01

**Appendix G  
 Figure 1  
 Land Use**



**Legend**

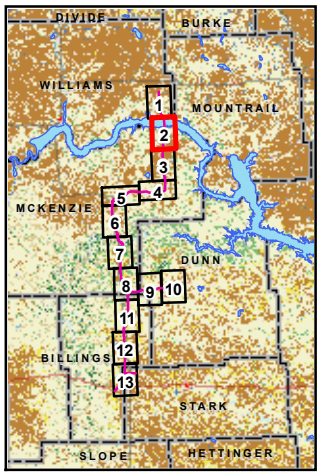
- BakkenLink Pipeline Route
- Pipeline Corridor (1 mile)
- BakkenLink Pipeline Receipt Points
- ★ Cities
- County Boundary

**Road Surface**

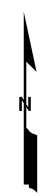
- Trail/Unknown
- Graded-Drained
- Gravel
- Paved

**Land Use (NLCD 2001)**

- No Data
- Open Water
- Developed, Open Space (Gravel)
- Developed, Low Intensity (Pavement)
- Developed, Medium Intensity
- Developed, High Intensity
- Barren Land (Rock/Sand/Clay)
- Deciduous Forest
- Evergreen Forest
- Mixed Forest
- Shrubland
- Grassland/Herbaceous
- Pasture/Hay
- Cultivated Crops
- Woody Wetlands
- Emergent Herbaceous Wetlands



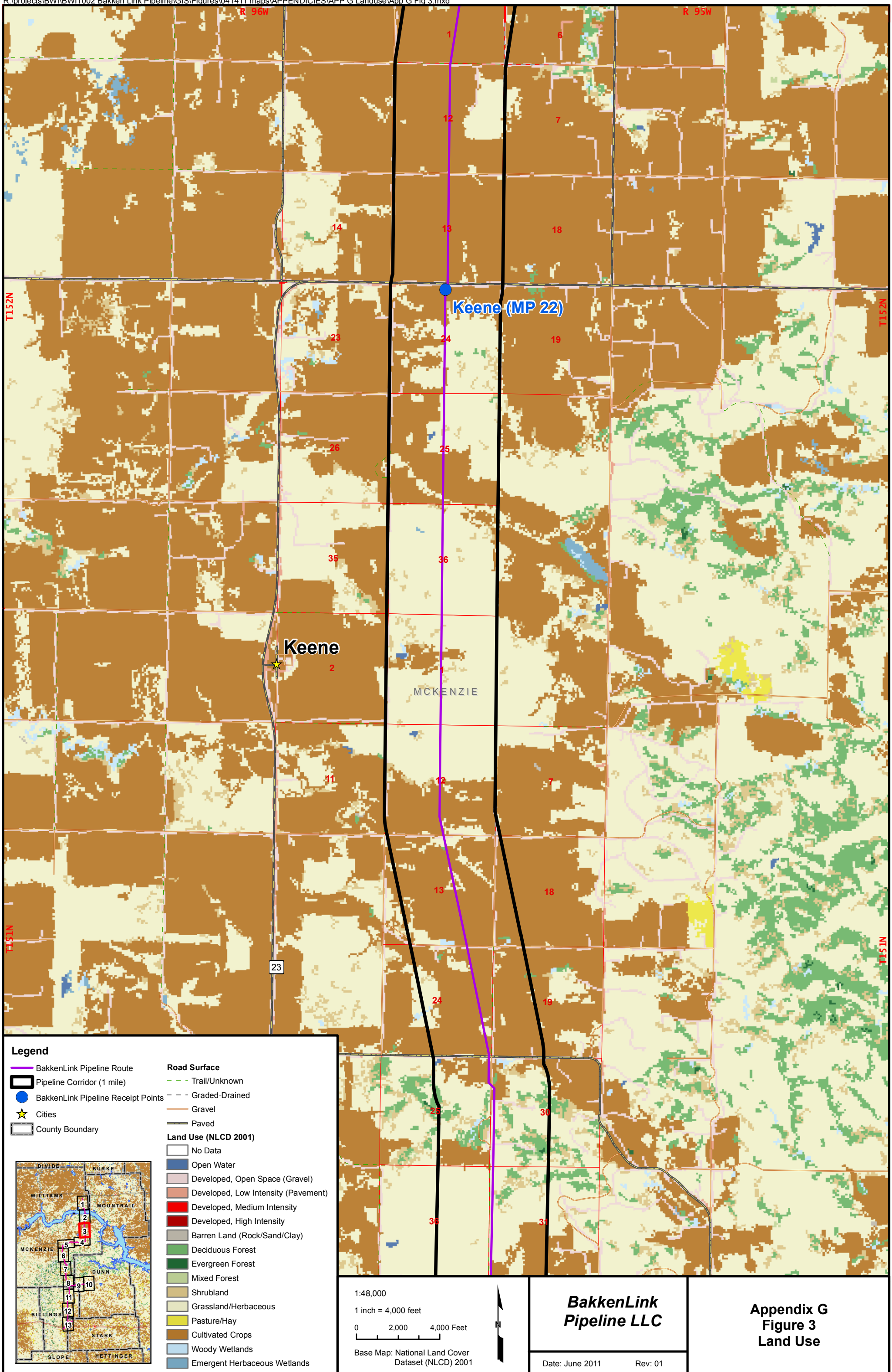
1:48,000  
 1 inch = 4,000 feet  
 0 2,000 4,000 Feet  
 Base Map: National Land Cover Dataset (NLCD) 2001



**BakkenLink Pipeline LLC**

**Appendix G  
 Figure 2  
 Land Use**

Date: June 2011 Rev: 01



**Legend**

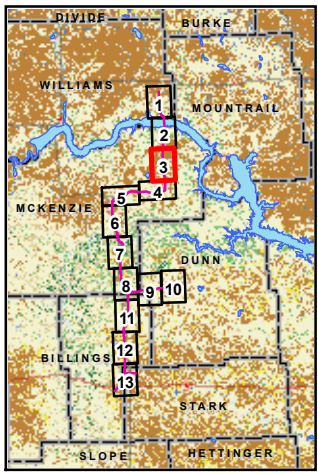
- BakkenLink Pipeline Route
- Pipeline Corridor (1 mile)
- BakkenLink Pipeline Receipt Points
- ★ Cities
- County Boundary

**Road Surface**

- Trail/Unknown
- Graded-Drained
- Gravel
- Paved

**Land Use (NLCD 2001)**

- No Data
- Open Water
- Developed, Open Space (Gravel)
- Developed, Low Intensity (Pavement)
- Developed, Medium Intensity
- Developed, High Intensity
- Barren Land (Rock/Sand/Clay)
- Deciduous Forest
- Evergreen Forest
- Mixed Forest
- Shrubland
- Grassland/Herbaceous
- Pasture/Hay
- Cultivated Crops
- Woody Wetlands
- Emergent Herbaceous Wetlands

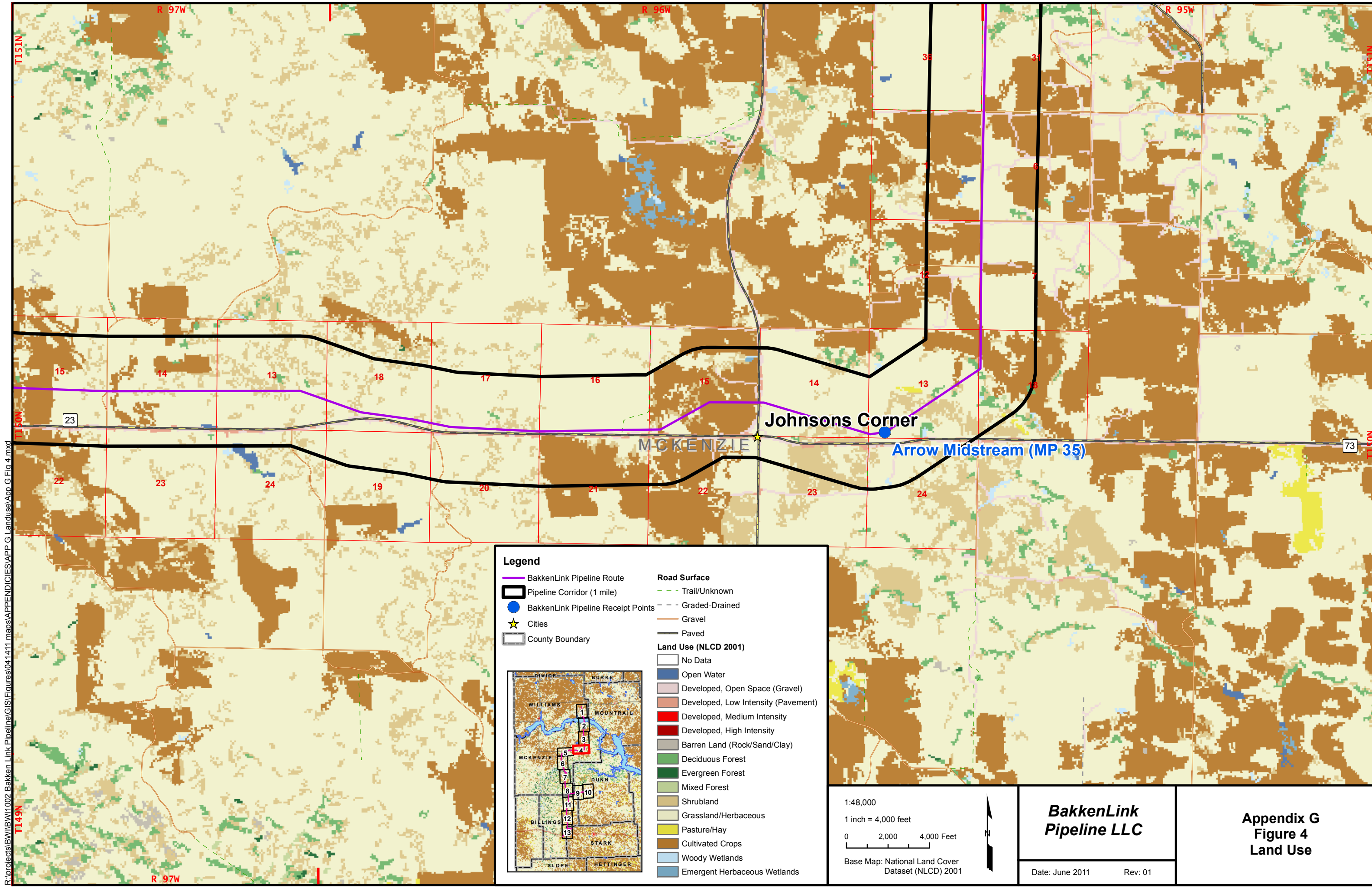


1:48,000  
 1 inch = 4,000 feet  
 0 2,000 4,000 Feet  
 Base Map: National Land Cover Dataset (NLCD) 2001



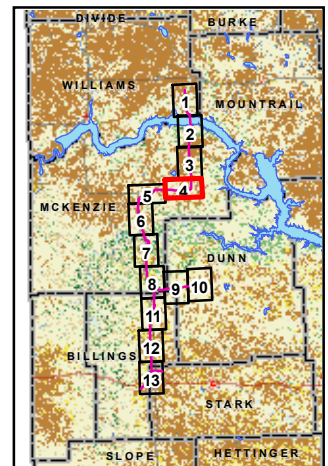
**BakkenLink Pipeline LLC**  
 Date: June 2011 Rev: 01

**Appendix G  
 Figure 3  
 Land Use**



R:\projects\BakkenLink Pipeline\GIS\Figures\041411\_maps\APPENDICES\APP G Landuse\APP G Fig 4.mxd

- Legend**
- BakkenLink Pipeline Route
  - Pipeline Corridor (1 mile)
  - BakkenLink Pipeline Receipt Points
  - ★ Cities
  - County Boundary



- Road Surface**
- Trail/Unknown
  - Graded-Drained
  - Gravel
  - Paved
- Land Use (NLCD 2001)**
- No Data
  - Open Water
  - Developed, Open Space (Gravel)
  - Developed, Low Intensity (Pavement)
  - Developed, Medium Intensity
  - Developed, High Intensity
  - Barren Land (Rock/Sand/Clay)
  - Deciduous Forest
  - Evergreen Forest
  - Mixed Forest
  - Shrubland
  - Grassland/Herbaceous
  - Pasture/Hay
  - Cultivated Crops
  - Woody Wetlands
  - Emergent Herbaceous Wetlands

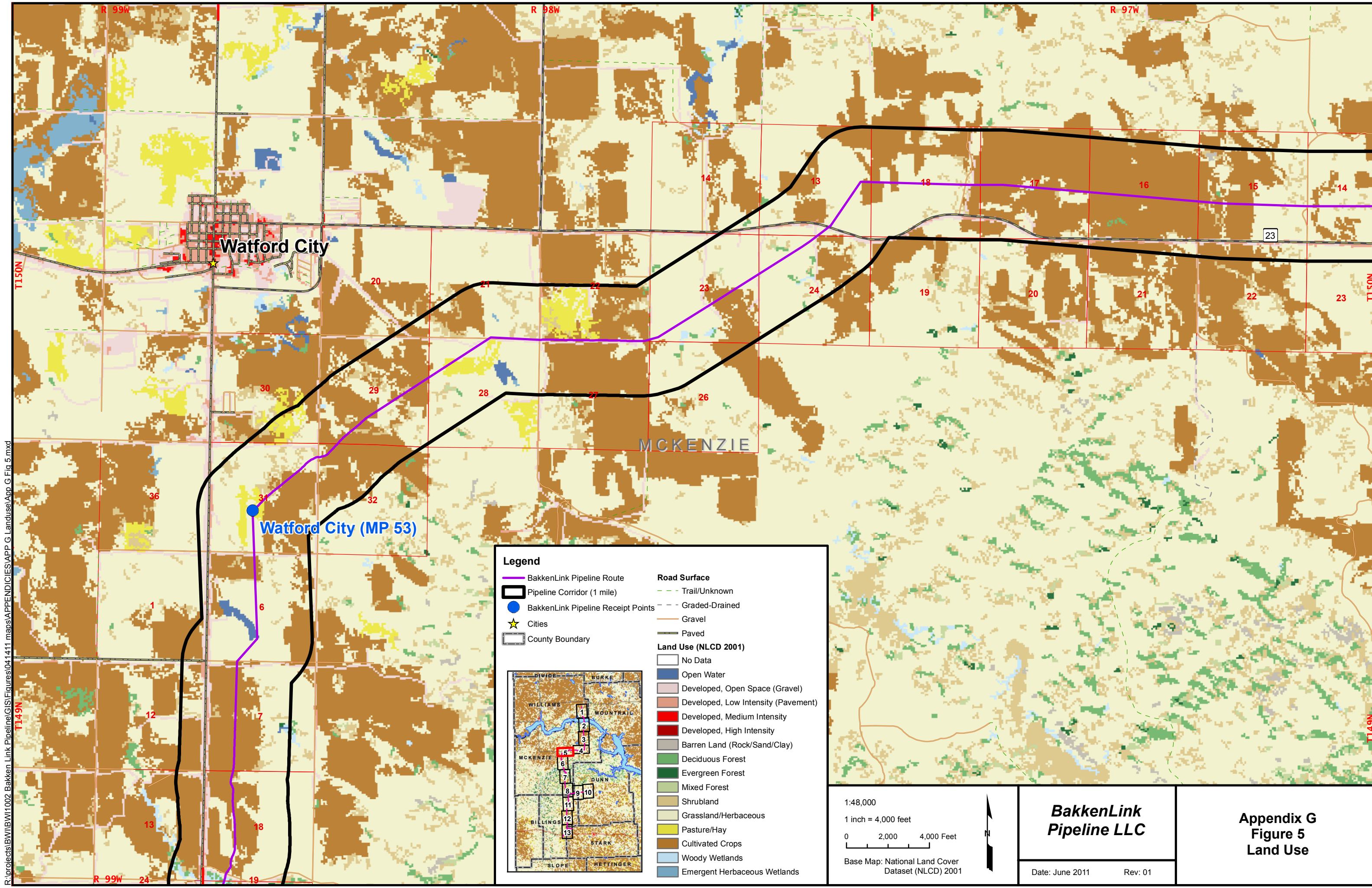
1:48,000  
 1 inch = 4,000 feet  
 0 2,000 4,000 Feet  
 Base Map: National Land Cover Dataset (NLCD) 2001



**BakkenLink  
Pipeline LLC**

Date: June 2011      Rev: 01

**Appendix G  
Figure 4  
Land Use**



R:\projects\BWB\BWB1002 Bakken Link Pipeline\GIS\Figures\041411 maps\APPENDICES\APP G Landuse\APP G Fig 5.mxd

**Legend**

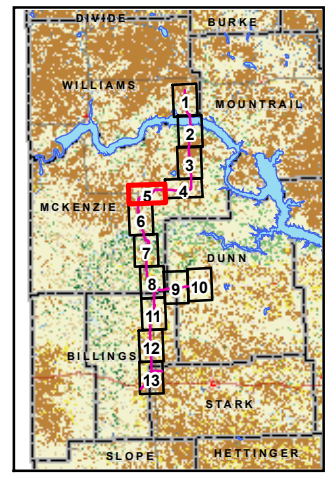
- BakkenLink Pipeline Route
- Pipeline Corridor (1 mile)
- BakkenLink Pipeline Receipt Points
- ★ Cities
- County Boundary

**Road Surface**

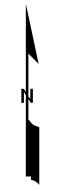
- Trail/Unknown
- Graded-Drained
- Gravel
- Paved

**Land Use (NLCD 2001)**

- No Data
- Open Water
- Developed, Open Space (Gravel)
- Developed, Low Intensity (Pavement)
- Developed, Medium Intensity
- Developed, High Intensity
- Barren Land (Rock/Sand/Clay)
- Deciduous Forest
- Evergreen Forest
- Mixed Forest
- Shrubland
- Grassland/Herbaceous
- Pasture/Hay
- Cultivated Crops
- Woody Wetlands
- Emergent Herbaceous Wetlands



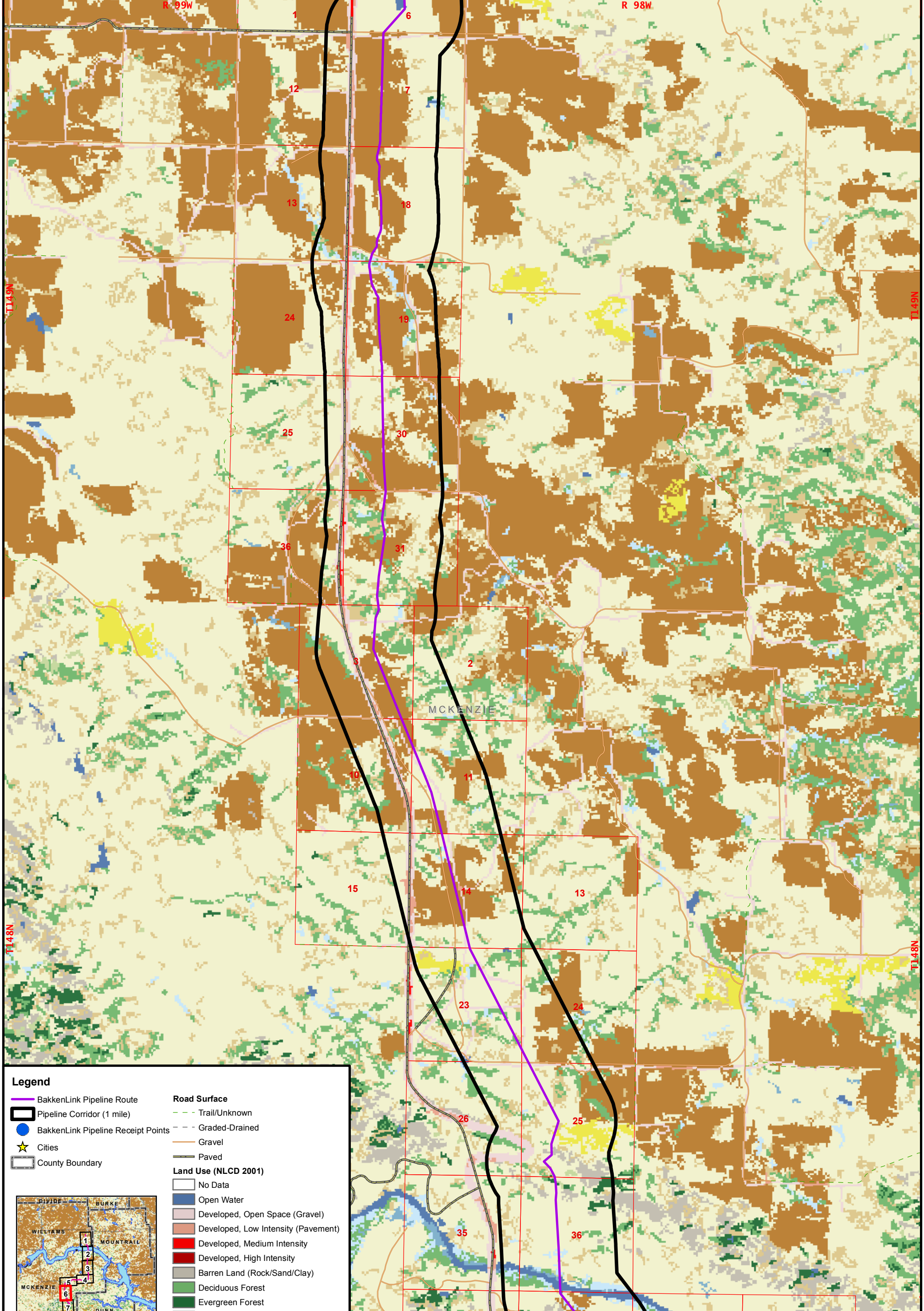
1:48,000  
 1 inch = 4,000 feet  
 0 2,000 4,000 Feet  
 Base Map: National Land Cover Dataset (NLCD) 2001



**BakkenLink  
Pipeline LLC**

Date: June 2011      Rev: 01

**Appendix G  
Figure 5  
Land Use**



**Legend**

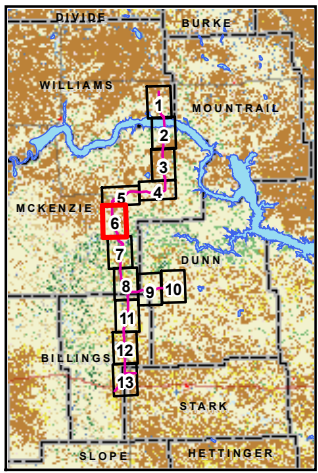
- BakkenLink Pipeline Route
- Pipeline Corridor (1 mile)
- BakkenLink Pipeline Receipt Points
- ★ Cities
- County Boundary

**Road Surface**

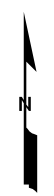
- Trail/Unknown
- Graded-Drained
- Gravel
- Paved

**Land Use (NLCD 2001)**

- No Data
- Open Water
- Developed, Open Space (Gravel)
- Developed, Low Intensity (Pavement)
- Developed, Medium Intensity
- Developed, High Intensity
- Barren Land (Rock/Sand/Clay)
- Deciduous Forest
- Evergreen Forest
- Mixed Forest
- Shrubland
- Grassland/Herbaceous
- Pasture/Hay
- Cultivated Crops
- Woody Wetlands
- Emergent Herbaceous Wetlands



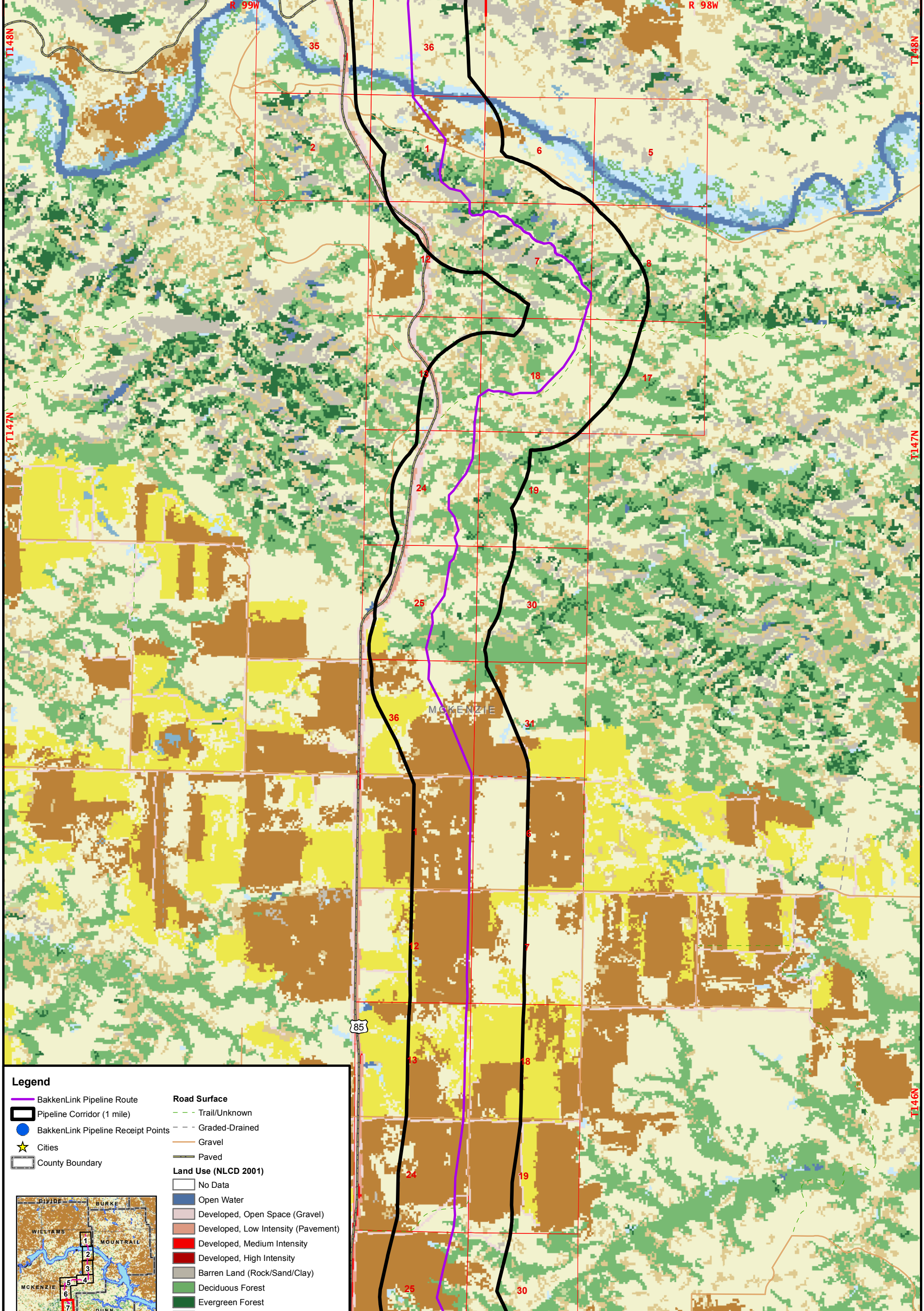
1:48,000  
 1 inch = 4,000 feet  
 0 2,000 4,000 Feet  
 Base Map: National Land Cover Dataset (NLCD) 2001



**BakkenLink Pipeline LLC**

**Appendix G  
 Figure 6  
 Land Use**

Date: June 2011 Rev: 01



**Legend**

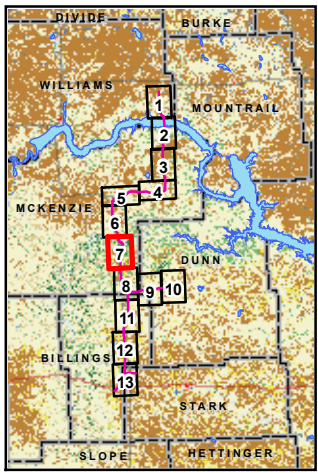
- BakkenLink Pipeline Route
- Pipeline Corridor (1 mile)
- BakkenLink Pipeline Receipt Points
- Cities
- County Boundary

**Road Surface**

- Trail/Unknown
- Graded-Drained
- Gravel
- Paved

**Land Use (NLCD 2001)**

- No Data
- Open Water
- Developed, Open Space (Gravel)
- Developed, Low Intensity (Pavement)
- Developed, Medium Intensity
- Developed, High Intensity
- Barren Land (Rock/Sand/Clay)
- Deciduous Forest
- Evergreen Forest
- Mixed Forest
- Shrubland
- Grassland/Herbaceous
- Pasture/Hay
- Cultivated Crops
- Woody Wetlands
- Emergent Herbaceous Wetlands



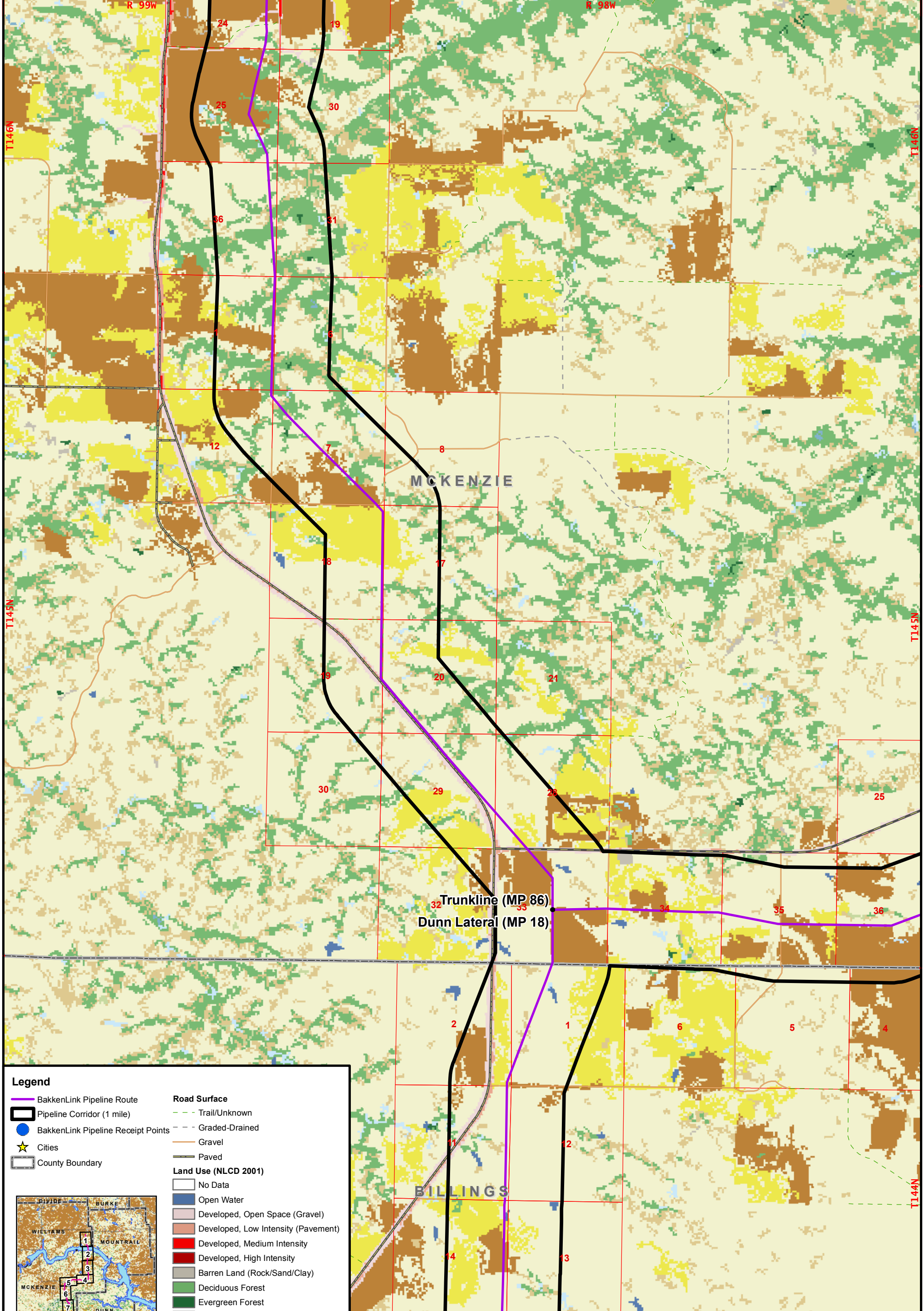
1:48,000  
 1 inch = 4,000 feet  
 0 2,000 4,000 Feet

Base Map: National Land Cover Dataset (NLCD) 2001

**BakkenLink Pipeline LLC**

Date: June 2011 Rev: 01

**Appendix G  
 Figure 7  
 Land Use**



**Legend**

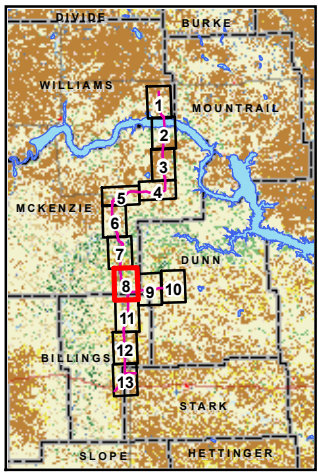
- BakkenLink Pipeline Route
- Pipeline Corridor (1 mile)
- BakkenLink Pipeline Receipt Points
- ★ Cities
- County Boundary

**Road Surface**

- Trail/Unknown
- Graded-Drained
- Gravel
- Paved

**Land Use (NLCD 2001)**

- No Data
- Open Water
- Developed, Open Space (Gravel)
- Developed, Low Intensity (Pavement)
- Developed, Medium Intensity
- Developed, High Intensity
- Barren Land (Rock/Sand/Clay)
- Deciduous Forest
- Evergreen Forest
- Mixed Forest
- Shrubland
- Grassland/Herbaceous
- Pasture/Hay
- Cultivated Crops
- Woody Wetlands
- Emergent Herbaceous Wetlands



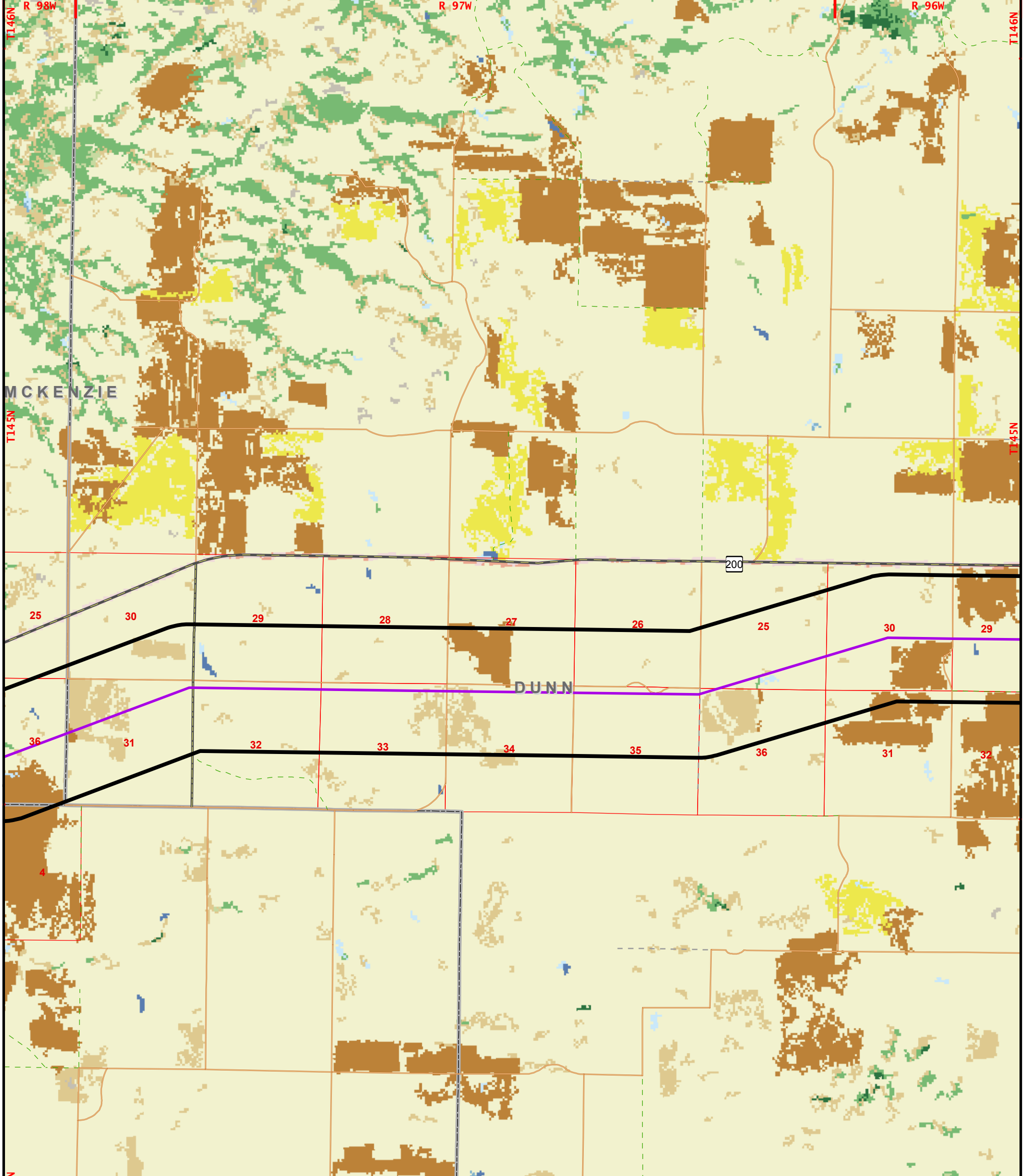
1:48,000  
 1 inch = 4,000 feet  
 0 2,000 4,000 Feet  
 Base Map: National Land Cover Dataset (NLCD) 2001



**BakkenLink Pipeline LLC**

Date: June 2011 Rev: 01

**Appendix G  
 Figure 8  
 Land Use**



**Legend**

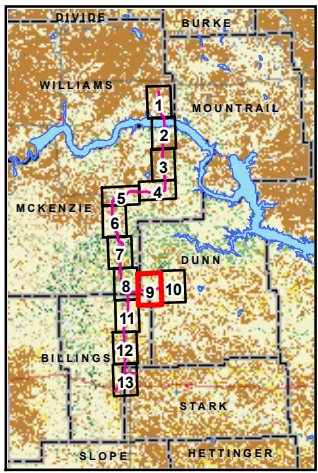
- BakkenLink Pipeline Route
- Pipeline Corridor (1 mile)
- BakkenLink Pipeline Receipt Points
- Cities
- County Boundary

**Road Surface**

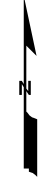
- Trail/Unknown
- Graded-Drained
- Gravel
- Paved

**Land Use (NLCD 2001)**

- No Data
- Open Water
- Developed, Open Space (Gravel)
- Developed, Low Intensity (Pavement)
- Developed, Medium Intensity
- Developed, High Intensity
- Barren Land (Rock/Sand/Clay)
- Deciduous Forest
- Evergreen Forest
- Mixed Forest
- Shrubland
- Grassland/Herbaceous
- Pasture/Hay
- Cultivated Crops
- Woody Wetlands
- Emergent Herbaceous Wetlands



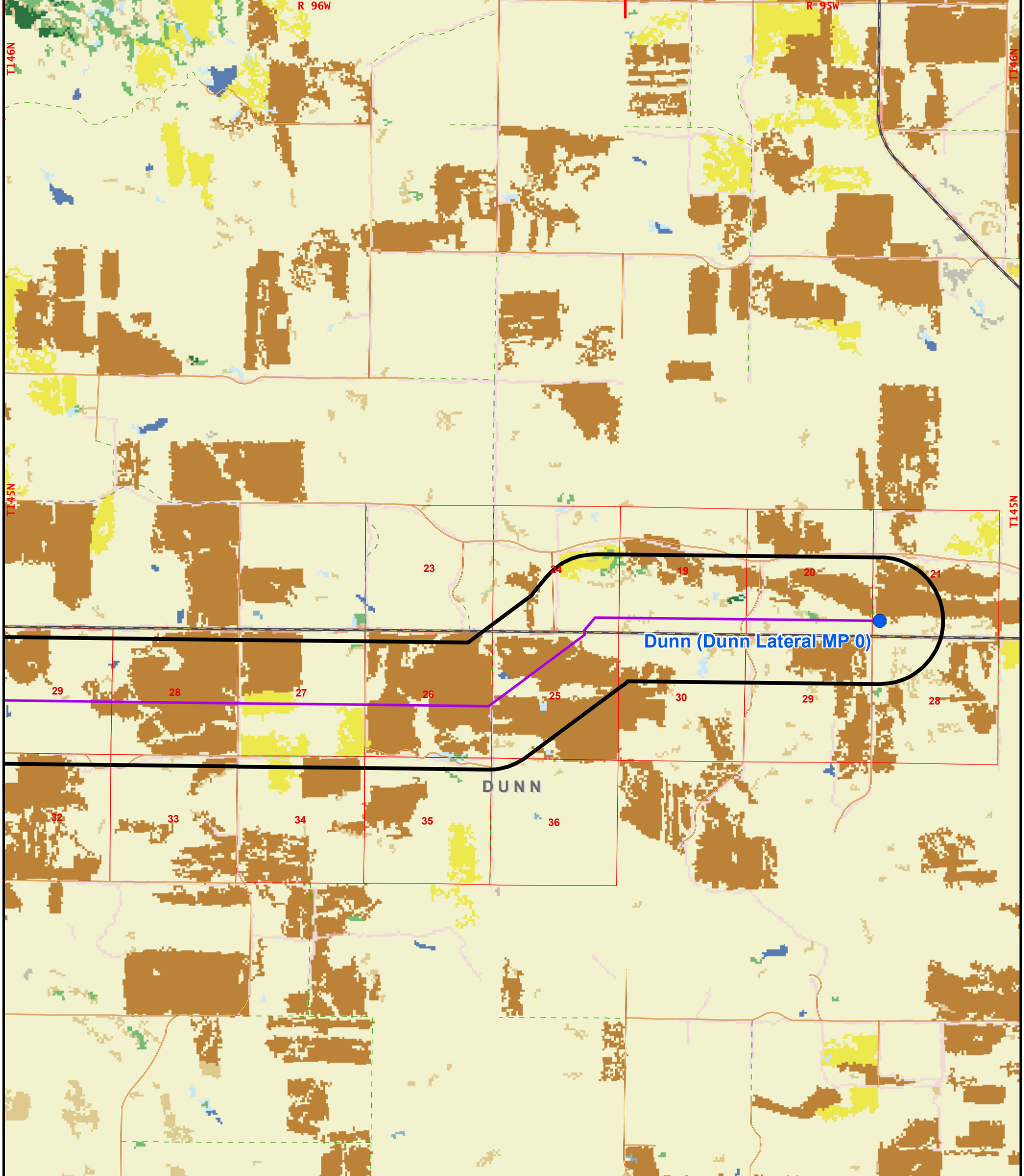
1:48,000  
 1 inch = 4,000 feet  
 0 2,000 4,000 Feet  
 Base Map: National Land Cover Dataset (NLCD) 2001



**BakkenLink Pipeline LLC**

**Appendix G  
 Figure 9  
 Land Use**

Date: June 2011 Rev: 01



**Legend**

- BakkenLink Pipeline Route
- Pipeline Corridor (1 mile)
- BakkenLink Pipeline Receipt Points
- Cities
- County Boundary

**Road Surface**

- Trail/Unknown
- Graded-Drained
- Gravel
- Paved

**Land Use (NLCD 2001)**

- No Data
- Open Water
- Developed, Open Space (Gravel)
- Developed, Low Intensity (Pavement)
- Developed, Medium Intensity
- Developed, High Intensity
- Barren Land (Rock/Sand/Clay)
- Deciduous Forest
- Evergreen Forest
- Mixed Forest
- Shrubland
- Grassland/Herbaceous
- Pasture/Hay
- Cultivated Crops
- Woody Wetlands
- Emergent Herbaceous Wetlands

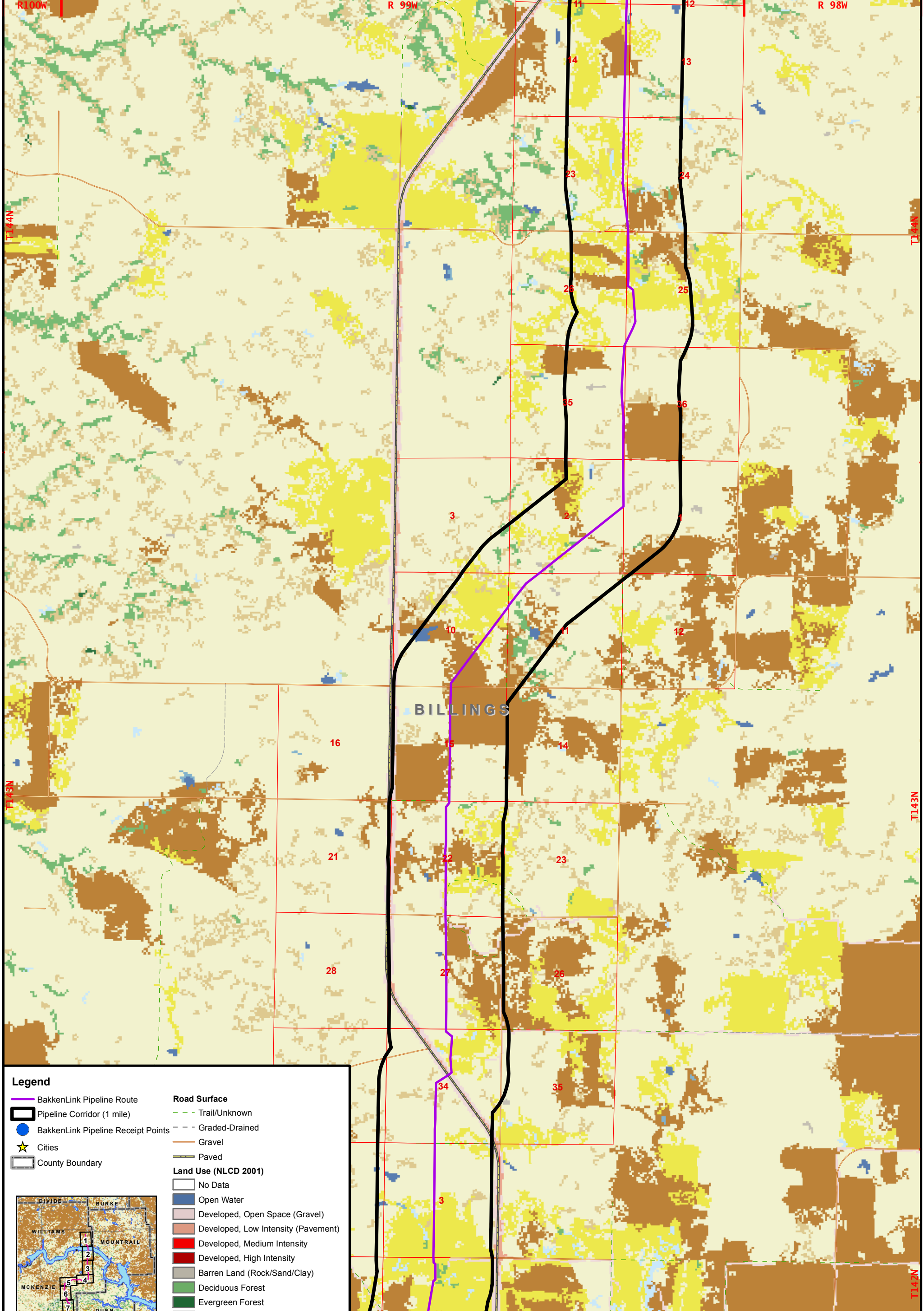
1:48,000  
 1 inch = 4,000 feet  
 0 2,000 4,000 Feet

Base Map: National Land Cover Dataset (NLCD) 2001

**BakkenLink Pipeline LLC**

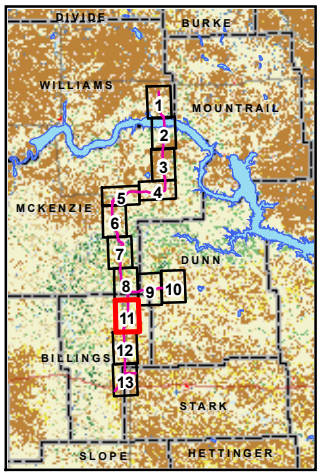
Date: June 2011 Rev: 01

**Appendix G  
 Figure 10  
 Land Use**



- Legend**
- BakkenLink Pipeline Route
  - Pipeline Corridor (1 mile)
  - BakkenLink Pipeline Receipt Points
  - ★ Cities
  - County Boundary

- Road Surface**
- Trail/Unknown
  - Graded-Drained
  - Gravel
  - Paved
- Land Use (NLCD 2001)**
- No Data
  - Open Water
  - Developed, Open Space (Gravel)
  - Developed, Low Intensity (Pavement)
  - Developed, Medium Intensity
  - Developed, High Intensity
  - Barren Land (Rock/Sand/Clay)
  - Deciduous Forest
  - Evergreen Forest
  - Mixed Forest
  - Shrubland
  - Grassland/Herbaceous
  - Pasture/Hay
  - Cultivated Crops
  - Woody Wetlands
  - Emergent Herbaceous Wetlands



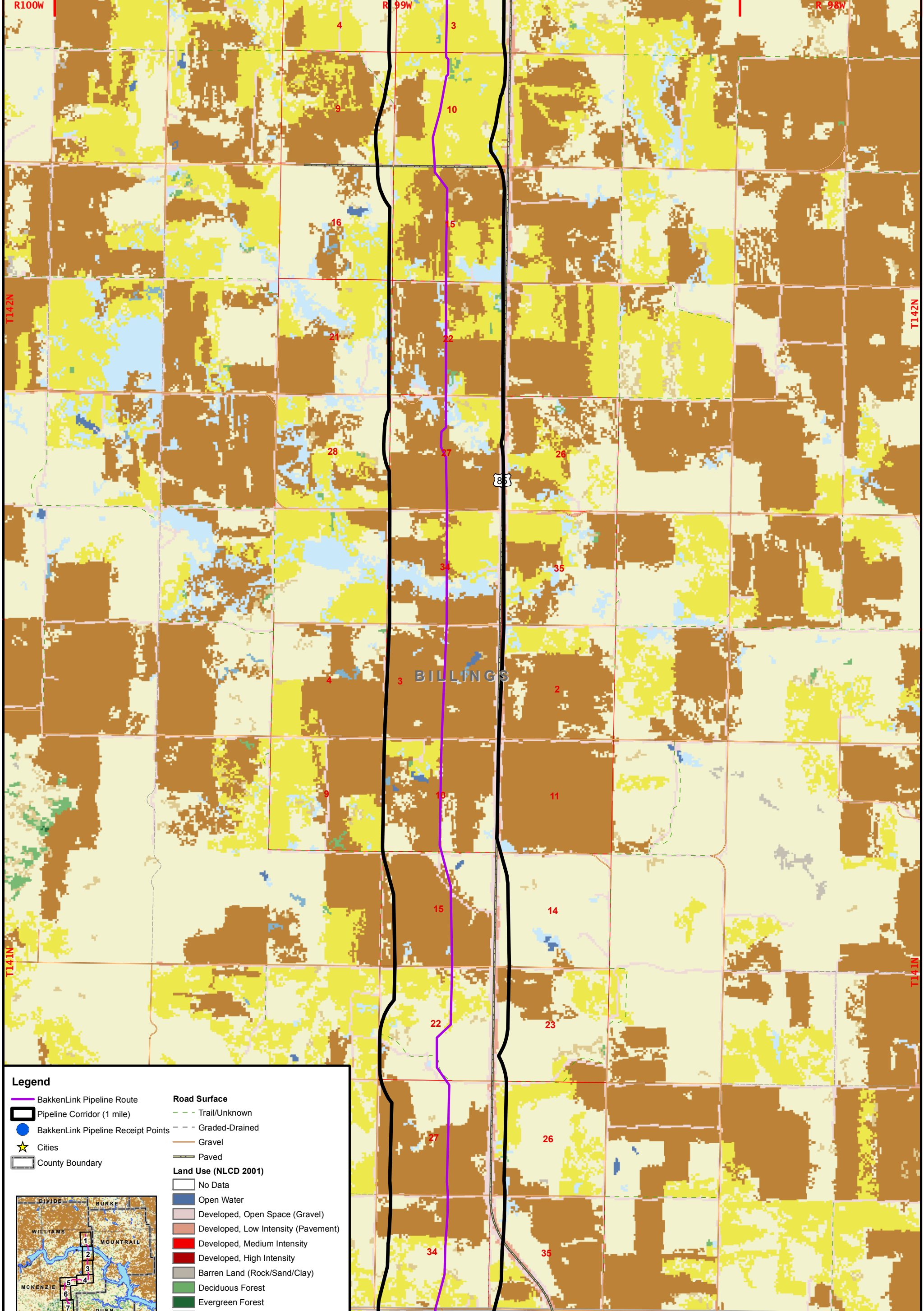
1:48,000  
 1 inch = 4,000 feet  
 0 2,000 4,000 Feet  
 Base Map: National Land Cover Dataset (NLCD) 2001



**BakkenLink Pipeline LLC**

Date: June 2011 Rev: 01

**Appendix G  
 Figure 11  
 Land Use**



**Legend**

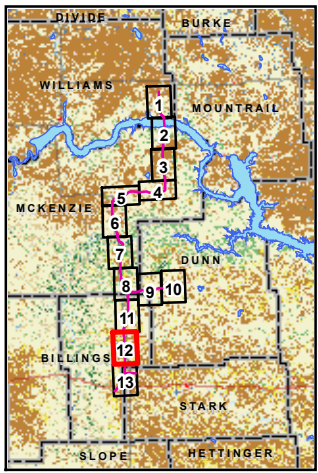
- BakkenLink Pipeline Route
- Pipeline Corridor (1 mile)
- BakkenLink Pipeline Receipt Points
- Cities
- County Boundary

**Road Surface**

- Trail/Unknown
- Graded-Drained
- Gravel
- Paved

**Land Use (NLCD 2001)**

- No Data
- Open Water
- Developed, Open Space (Gravel)
- Developed, Low Intensity (Pavement)
- Developed, Medium Intensity
- Developed, High Intensity
- Barren Land (Rock/Sand/Clay)
- Deciduous Forest
- Evergreen Forest
- Mixed Forest
- Shrubland
- Grassland/Herbaceous
- Pasture/Hay
- Cultivated Crops
- Woody Wetlands
- Emergent Herbaceous Wetlands



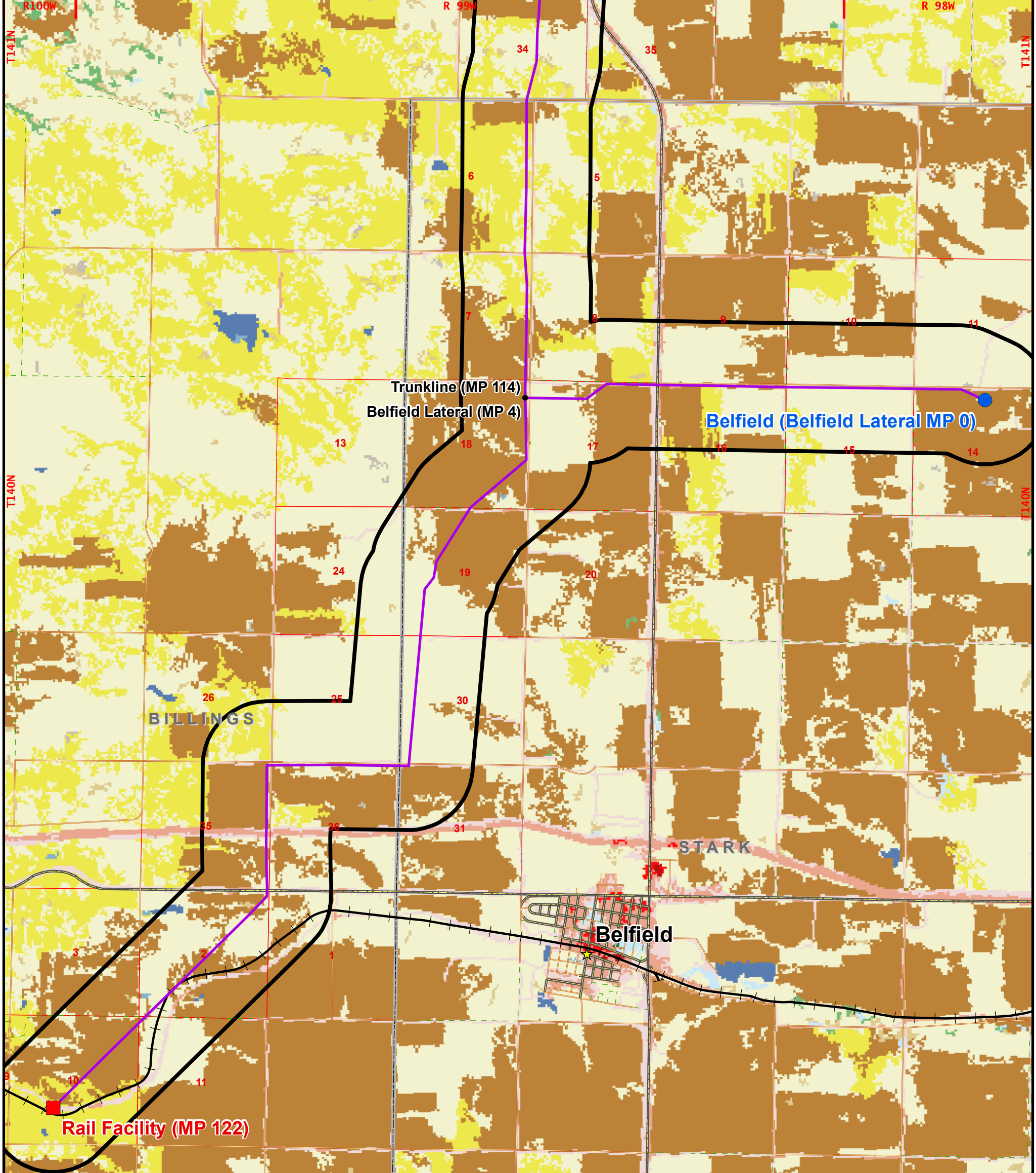
1:48,000  
 1 inch = 4,000 feet  
 0 2,000 4,000 Feet

Base Map: National Land Cover Dataset (NLCD) 2001

**BakkenLink Pipeline LLC**

Date: June 2011 Rev: 01

**Appendix G  
 Figure 12  
 Land Use**



**Legend**

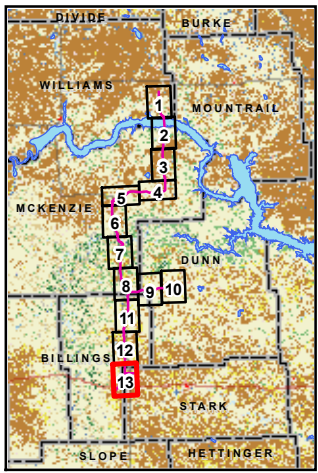
- BakkenLink Pipeline Route
- Pipeline Corridor (1 mile)
- BakkenLink Pipeline Delivery Point
- BakkenLink Pipeline Receipt Points
- Cities
- County Boundary

**Road Surface**

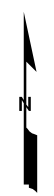
- Trail/Unknown
- Graded-Drained
- Gravel
- Paved
- Railroads

**Land Use (NLCD 2001)**

- No Data
- Open Water
- Developed, Open Space (Gravel)
- Developed, Low Intensity (Pavement)
- Developed, Medium Intensity
- Developed, High Intensity
- Barren Land (Rock/Sand/Clay)
- Deciduous Forest
- Evergreen Forest
- Mixed Forest
- Shrubland
- Grassland/Herbaceous
- Pasture/Hay
- Cultivated Crops
- Woody Wetlands
- Emergent Herbaceous Wetlands



1:48,000  
 1 inch = 4,000 feet  
 0 2,000 4,000 Feet  
 Base Map: National Land Cover Dataset (NLCD) 2001



**BakkenLink Pipeline LLC**  
 Date: June 2011 Rev: 01

**Appendix G  
 Figure 13  
 Land Use**