



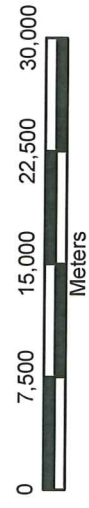
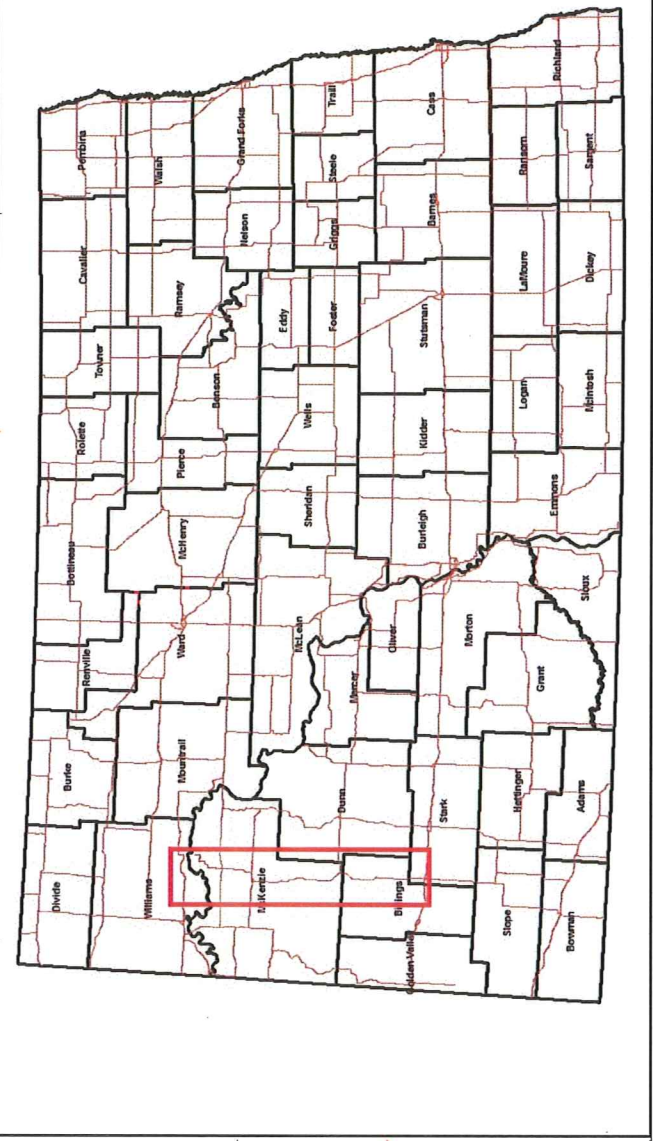
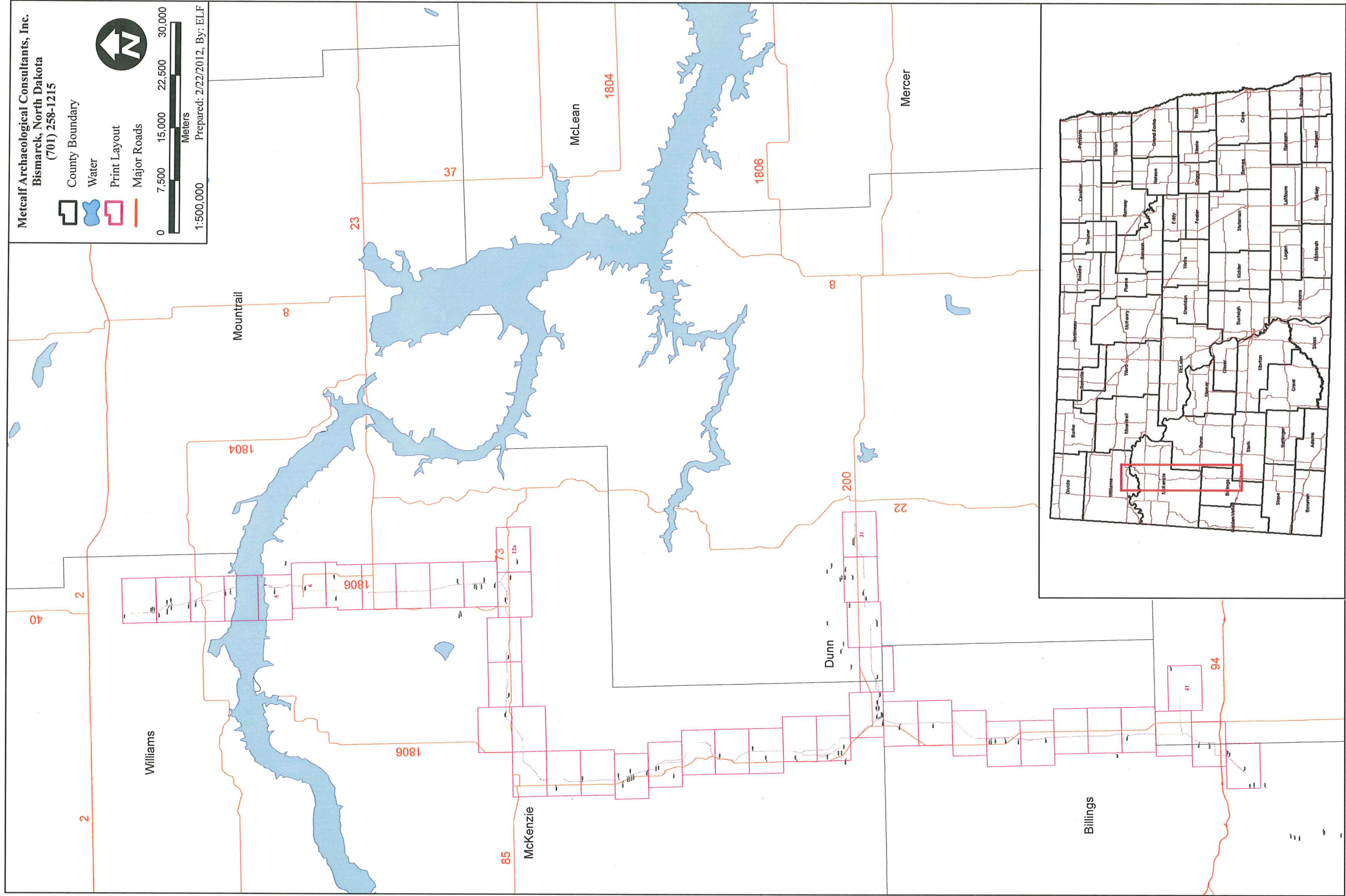


Metcalf Archaeological Consultants, Inc.
 Bismarck, North Dakota
 (701) 258-1215

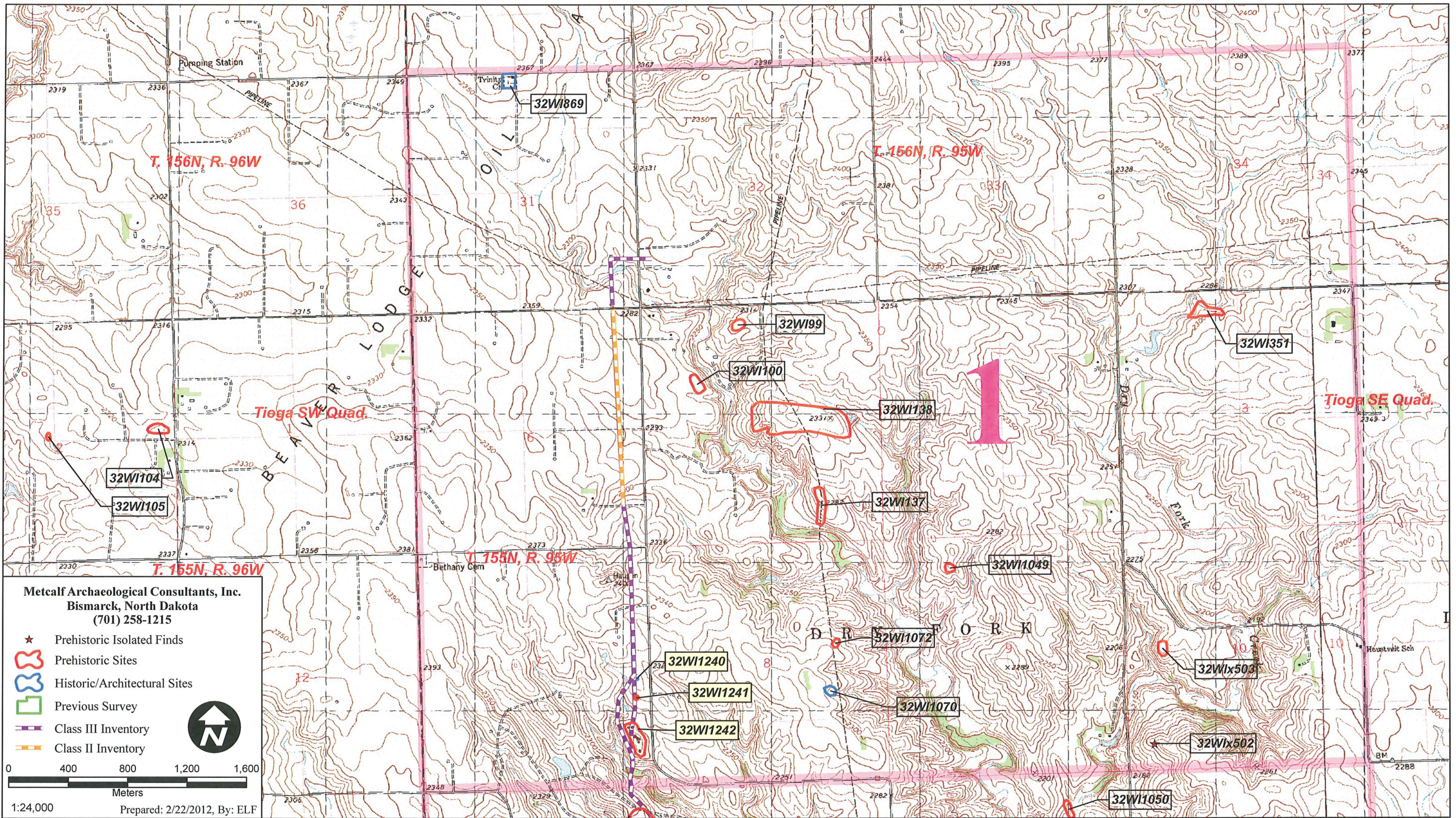
-  County Boundary
-  Water
-  Print Layout
-  Major Roads



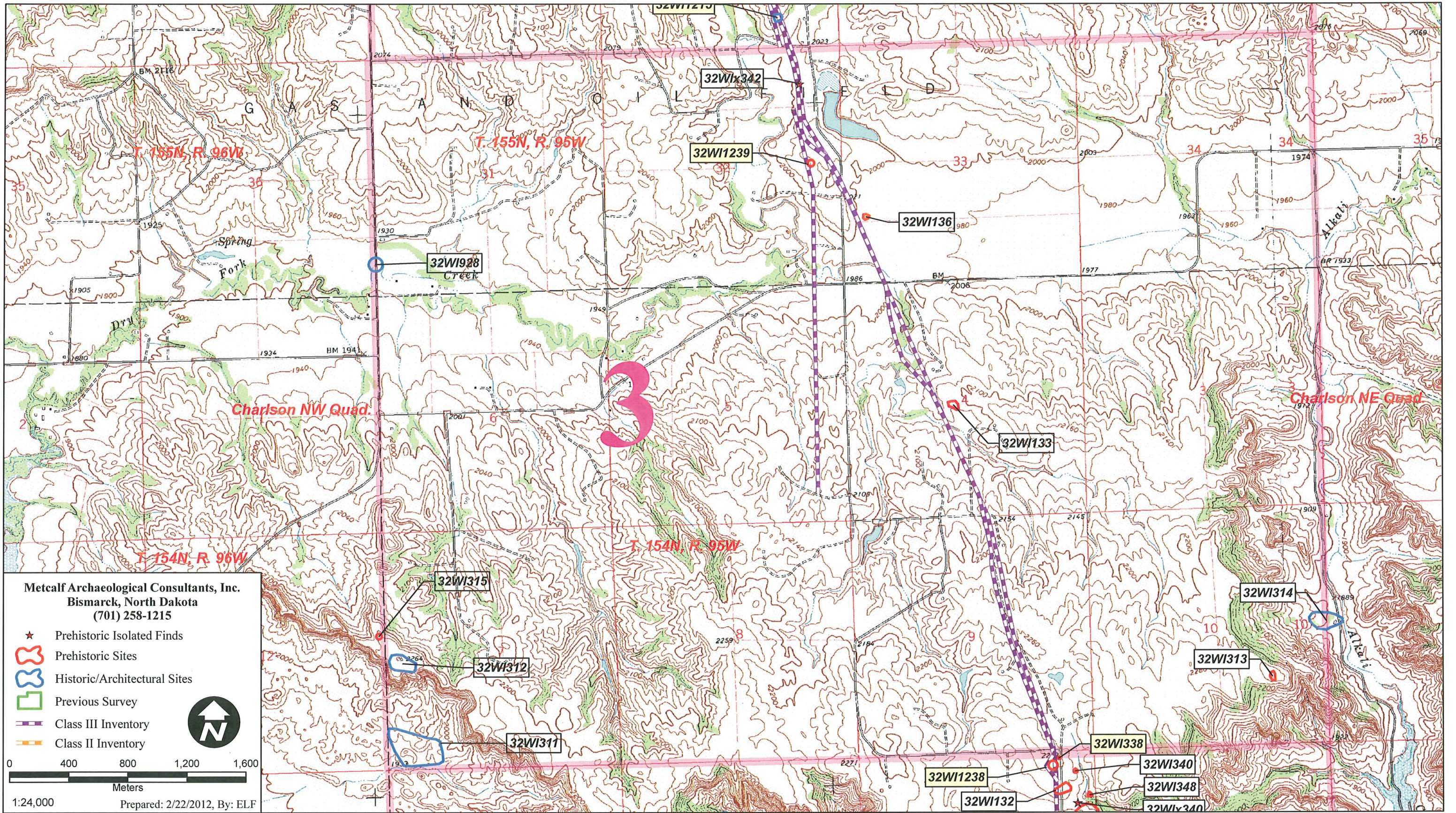
1:500,000
 Prepared: 2/22/2012, By: ELF



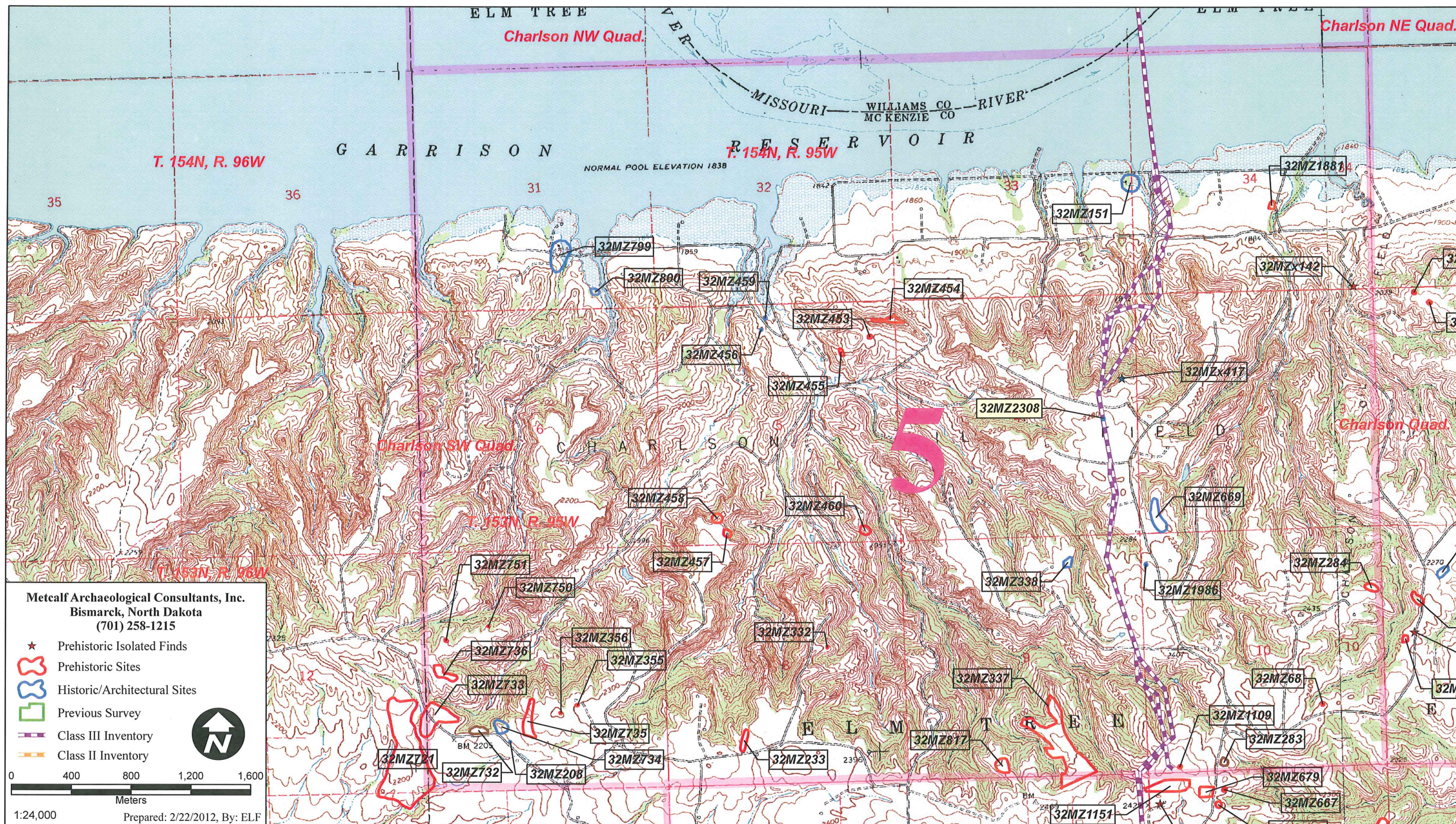
Overview of the Bakkenlink Pipeline.

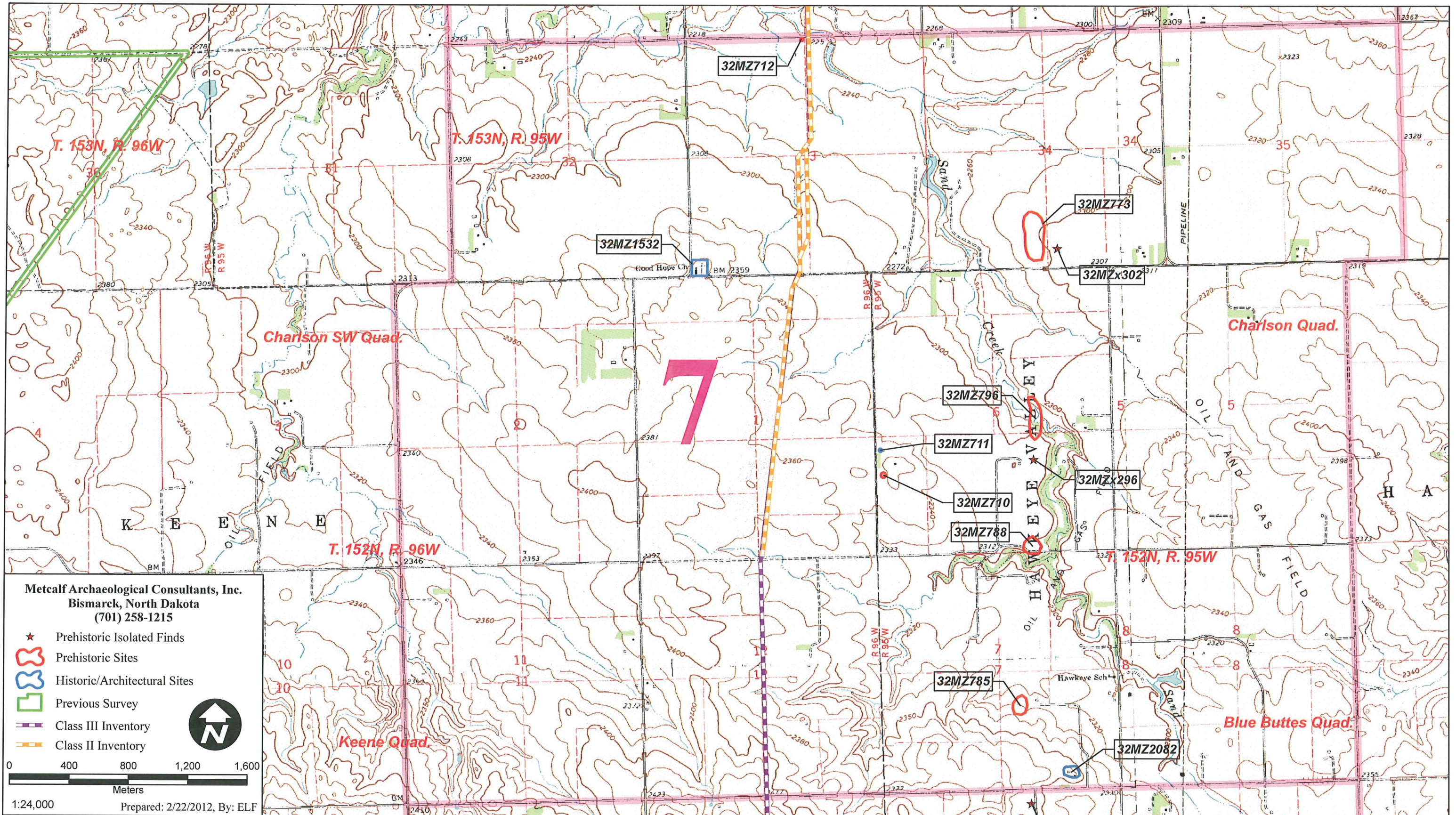


Map 1: Print Layout 1 - Location of the project corridor, sites 32W11240, 32W11241, and 32W11242, and previously known sites depicted on the USGS 7.5' Tioga SW (1979) and Tioga SE (1979) quadrangle maps.

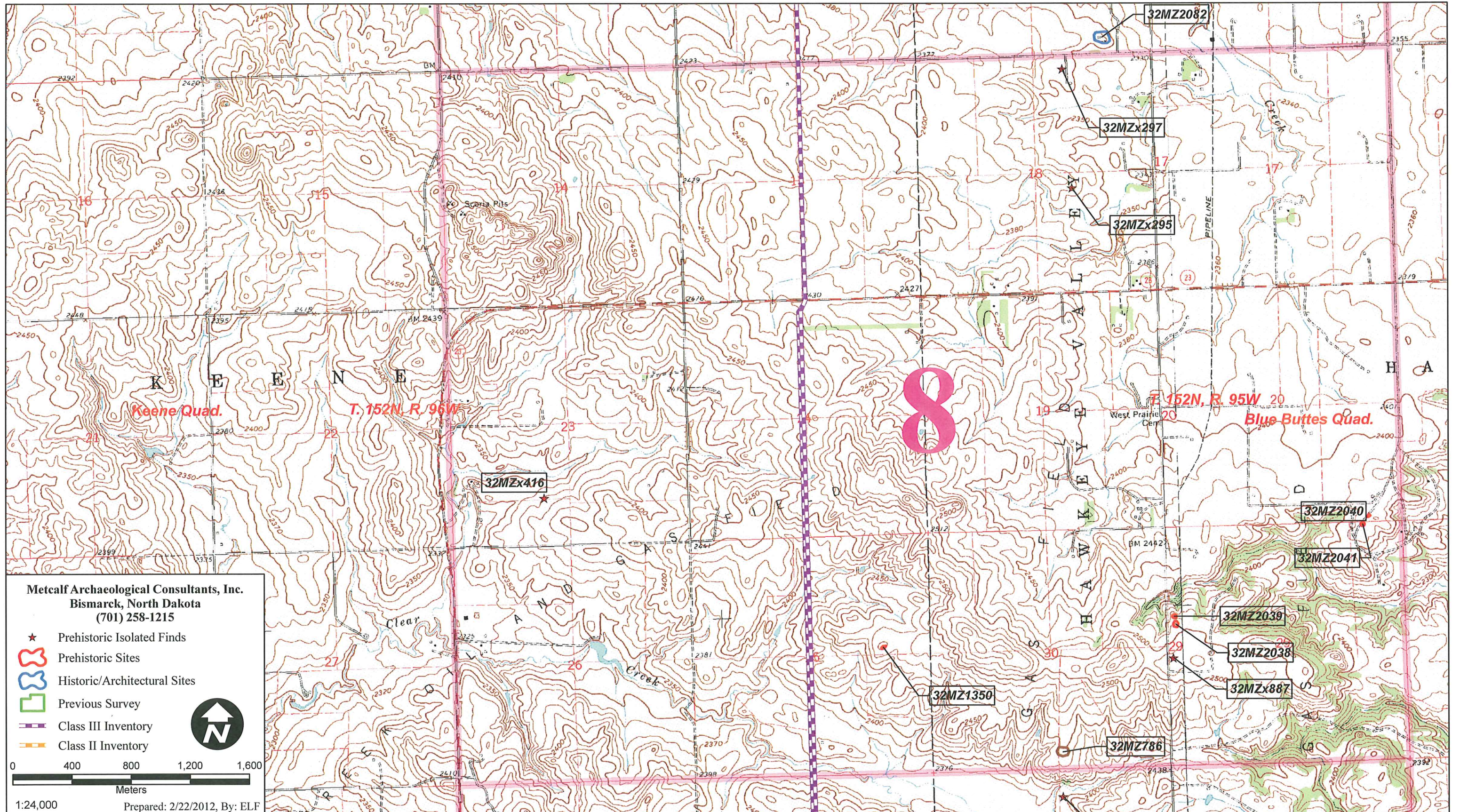


Map 3: Print Layout 3 - Location of the project corridor, site 32WI1239, and previously known sites depicted on the USGS 7.5' Charlson NW (1965), and Charlson NE (1965) quadrangle maps.

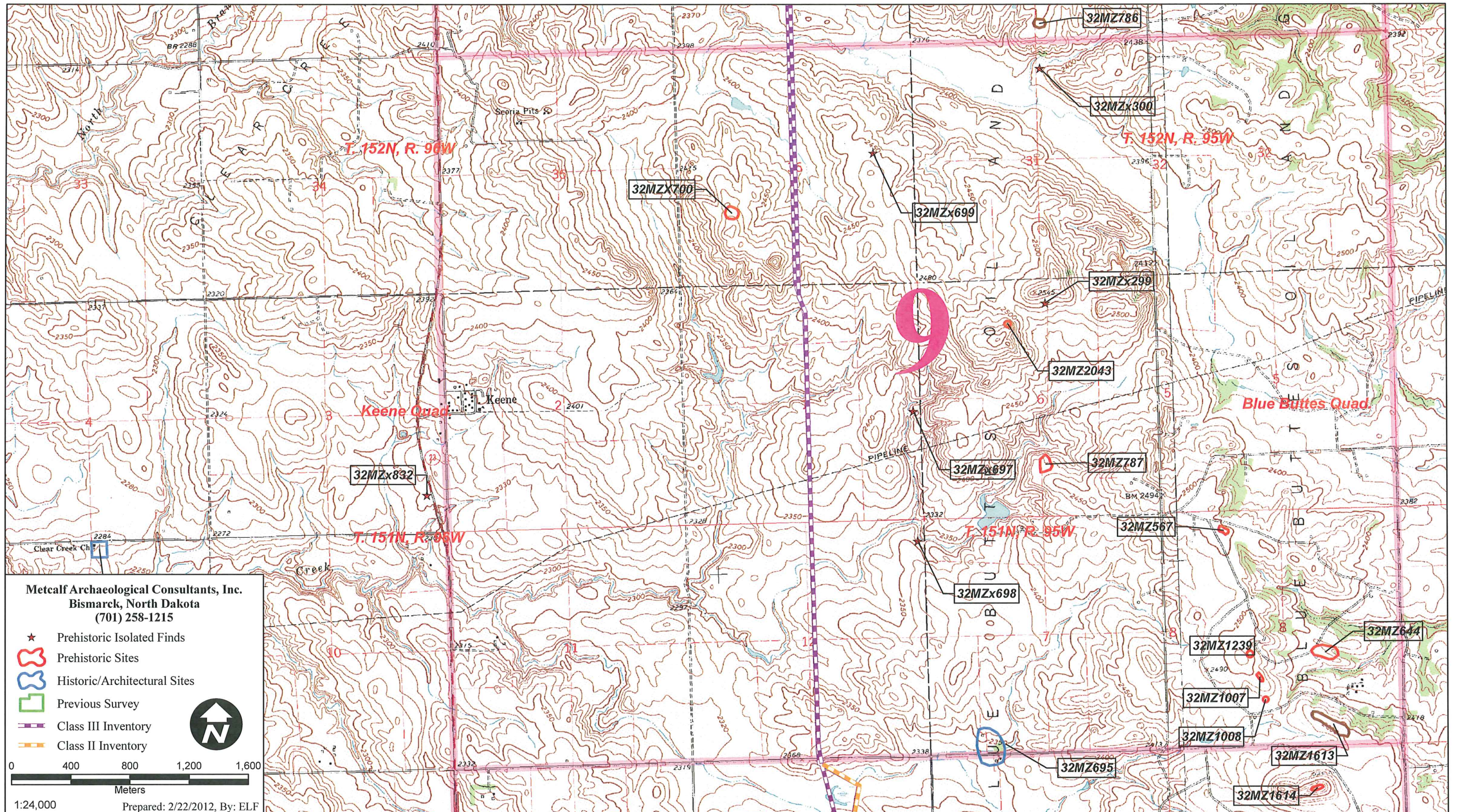




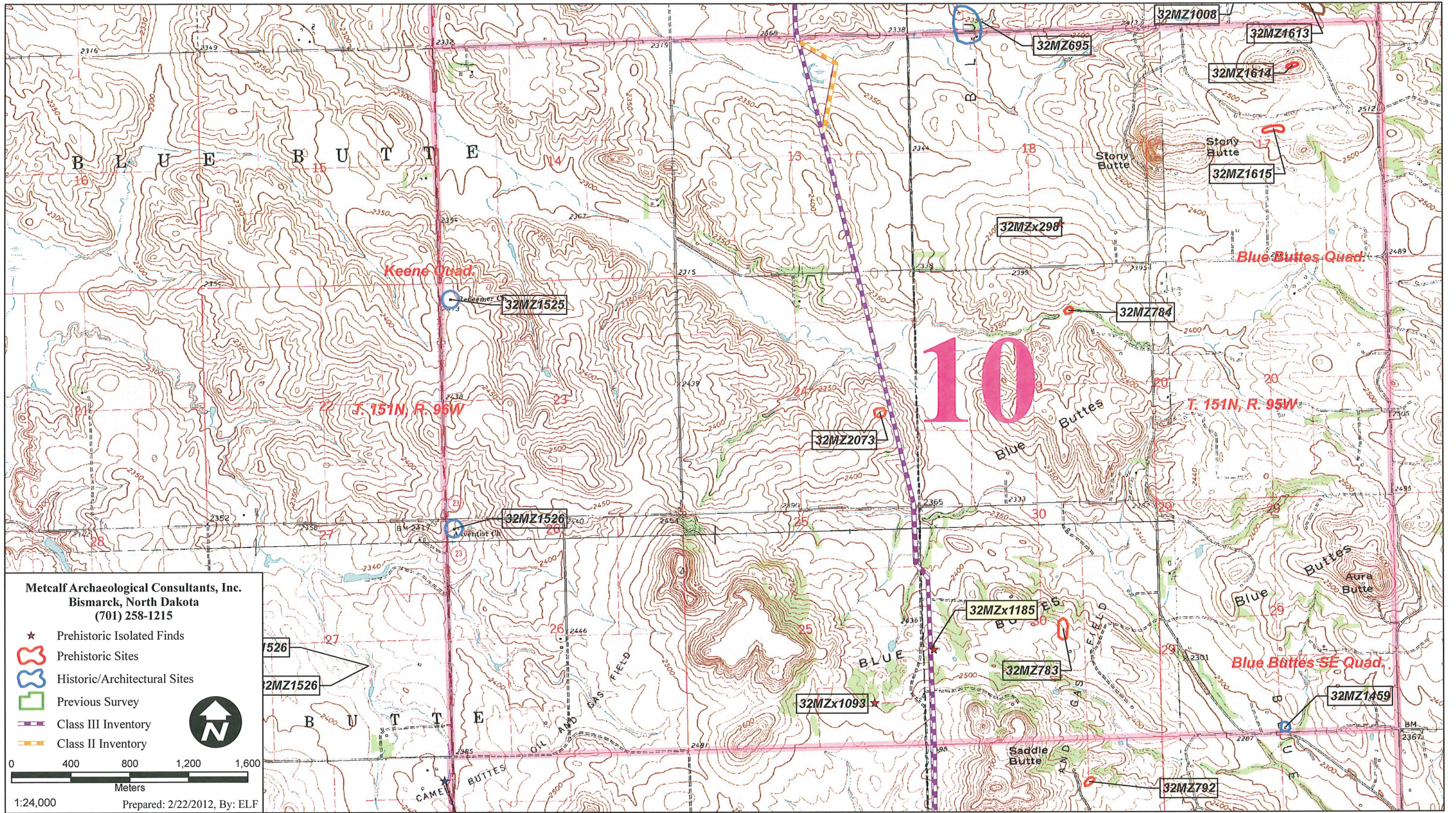
Map 7: Print Layout 7 - Location of the project corridor, and previously known sites and isolates depicted on the USGS 7.5' Charlson SW (1965), Charlson (1965), Keene (1965), and Blue Buttes (1965) quadrangle maps.



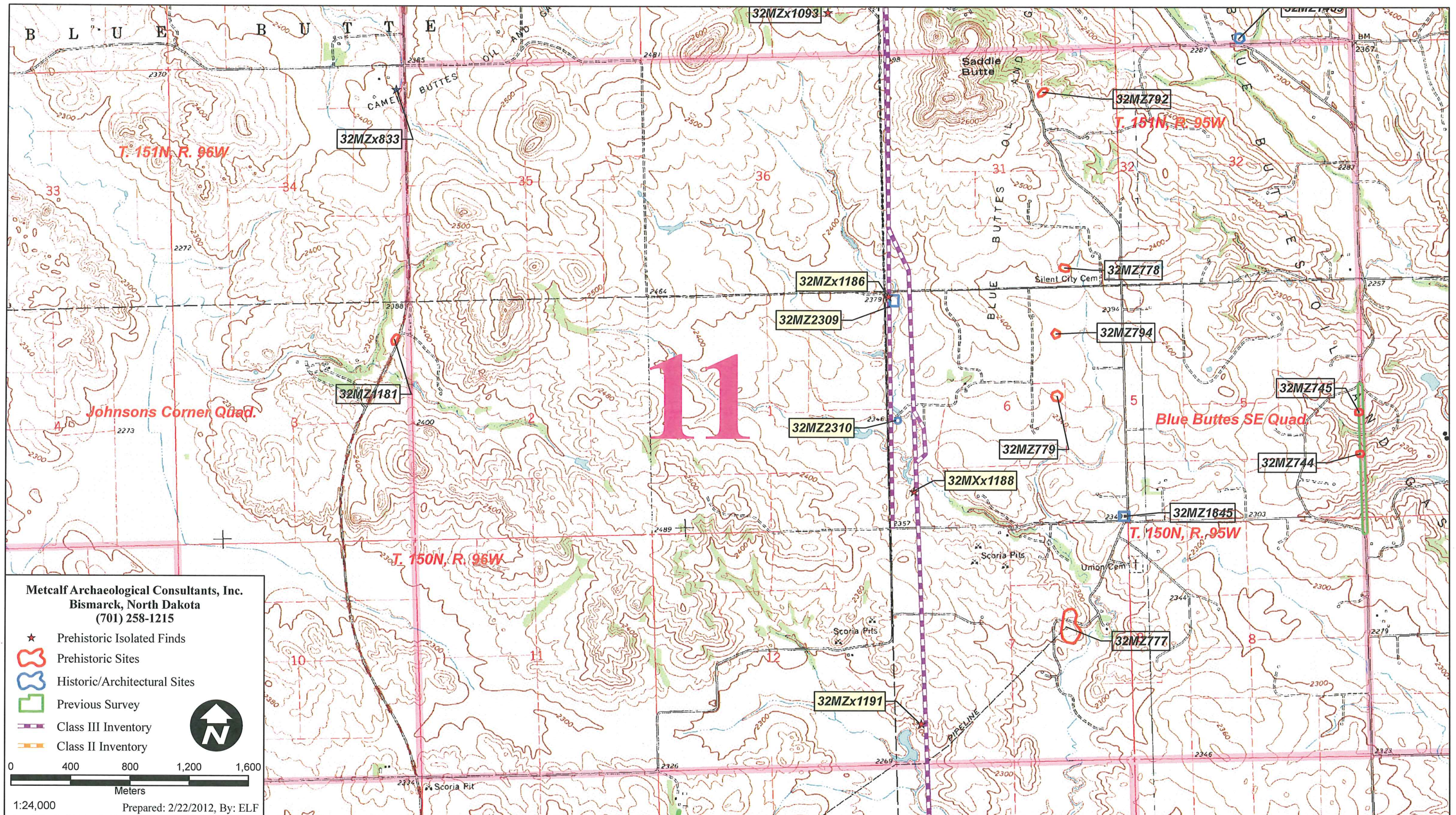
Map 8: Print Layout 8 - Location of the project corridor, and previously known sites and isolates depicted on the USGS 7.5' Keene (1965), and Blue Buttes (1965) quadrangle maps.



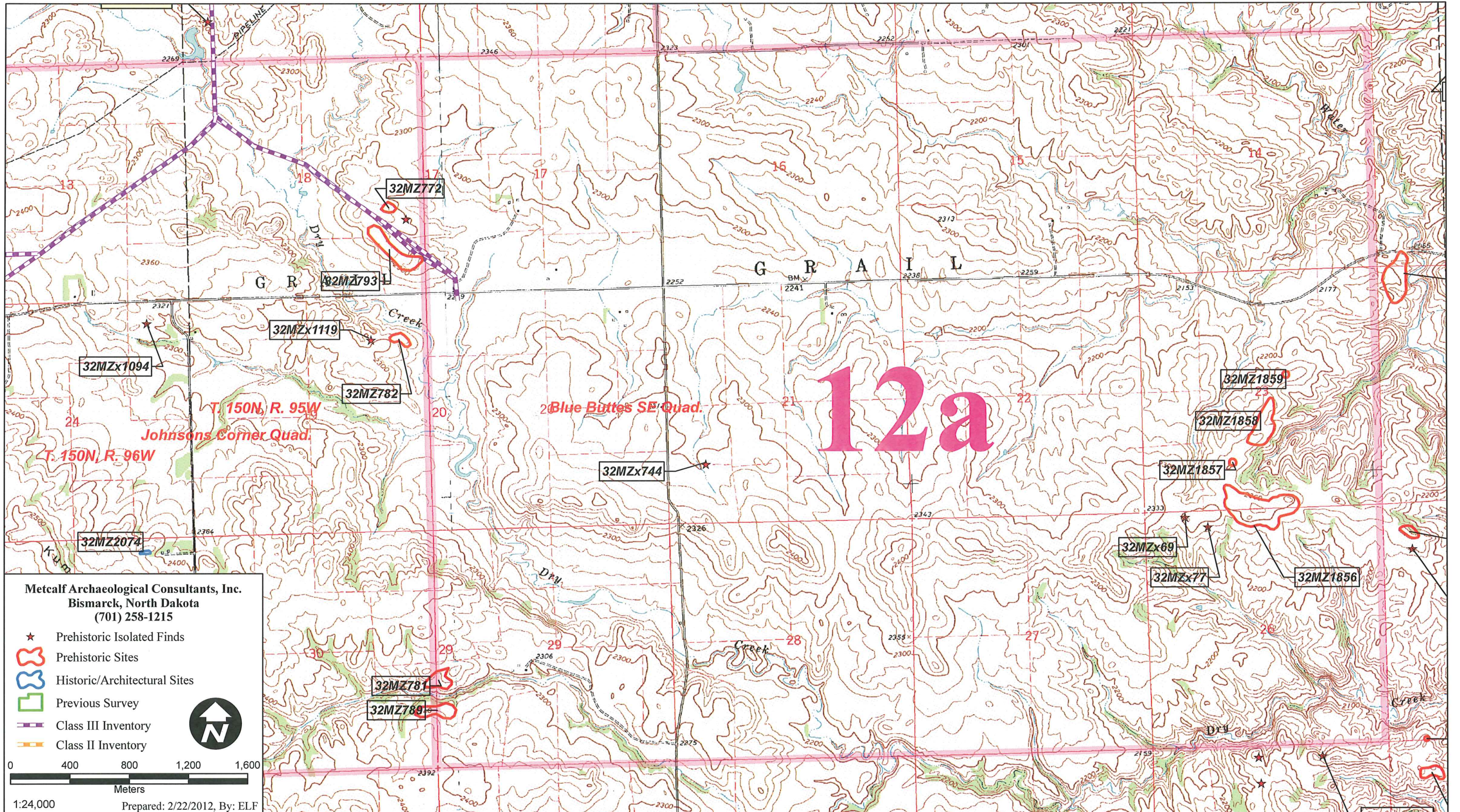
Map 9: Print Layout 9 - Location of the project corridor, and previously known sites and isolates depicted on the USGS 7.5' Keene (1965), and Blue Buttes (1965) quadrangle maps.

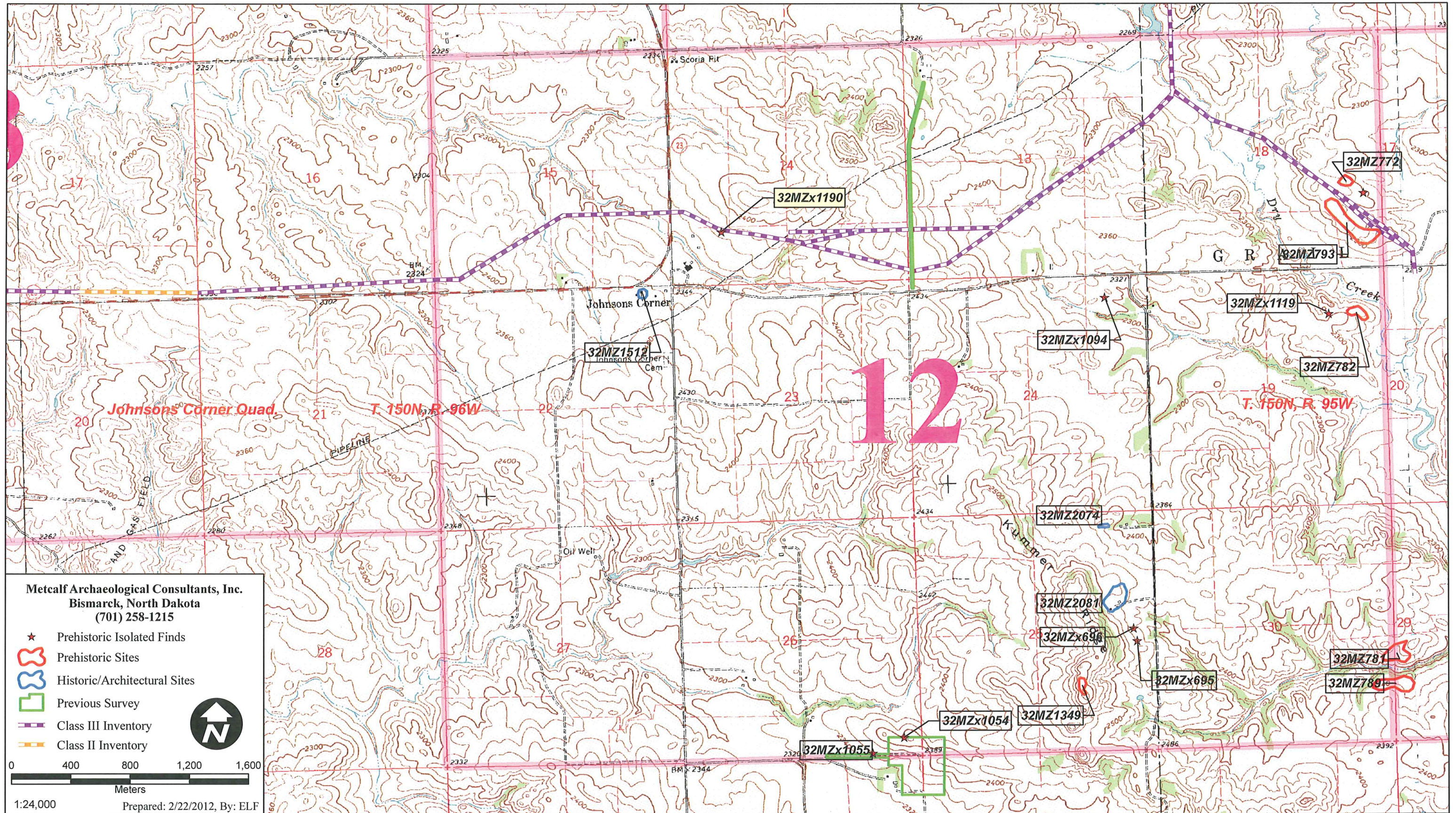


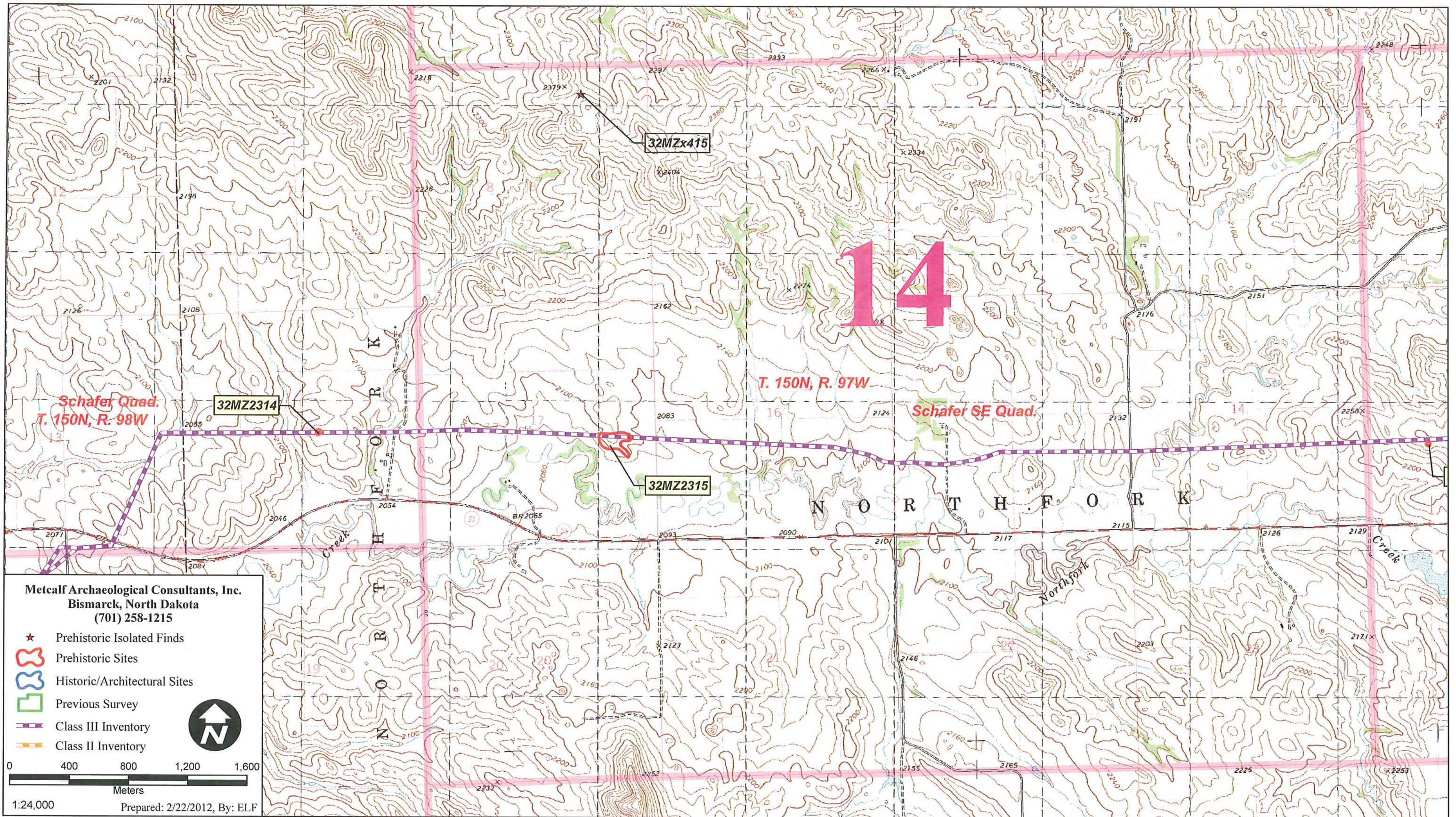
Map 10: Print Layout 10 - Location of the project corridor, isolate 32MZx1185, and previously known sites and isolates depicted on the USGS 7.5' Keene (1965), Blue Buttes (1965), Johnsons Corner (1965), and Blue Buttes SE (1997) quadrangle maps.



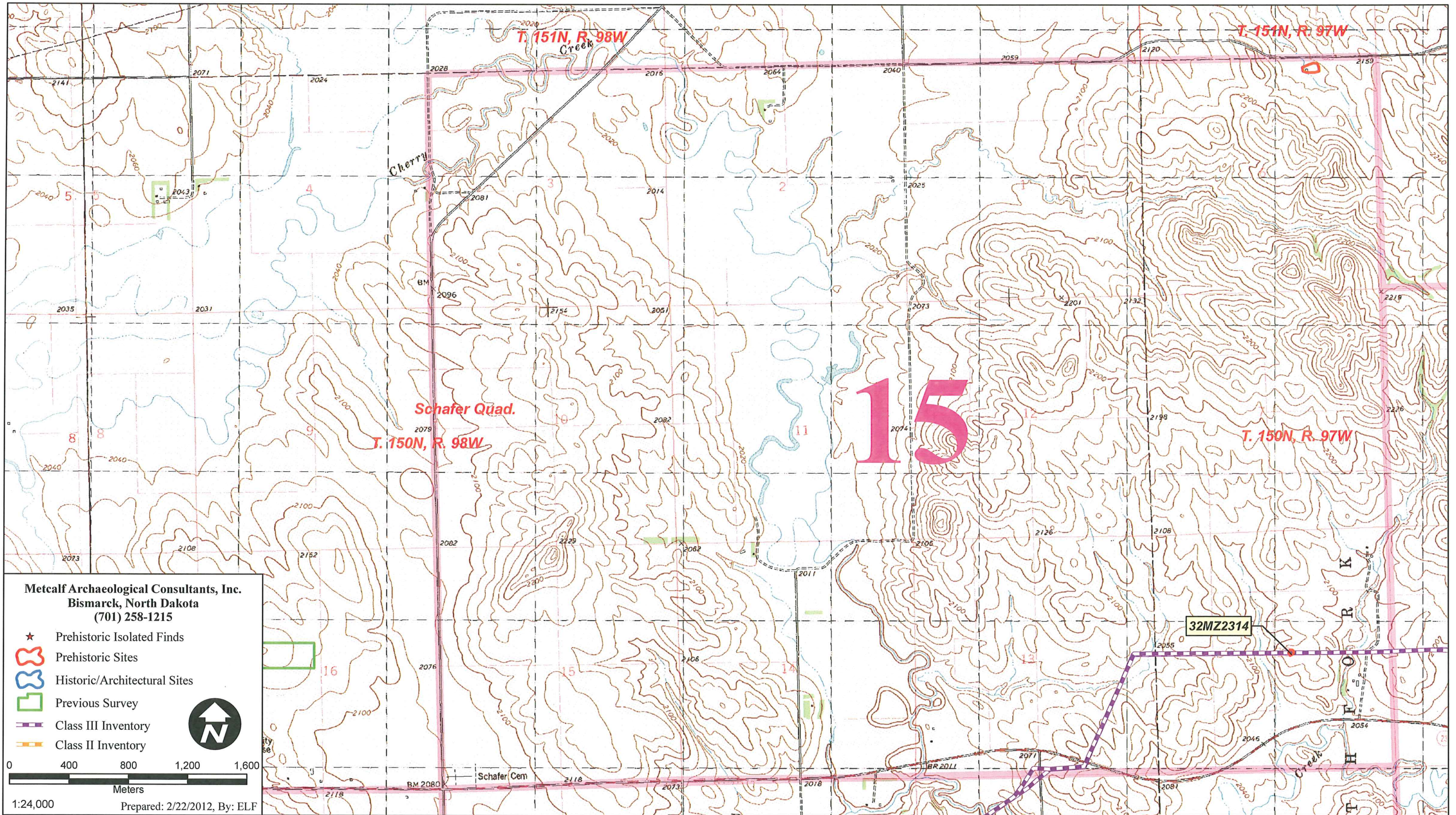
Map 11: Print Layout 11 - Location of the project corridor, sites 32MZ2309 and 32MZ2310, isolates 32MZx1186, 32MZx1188, and 32MZx1191, and previously known sites and isolates depicted on the USGS 7.5' Keene (1965), Blue Buttes (1965), Johnsons Corner (1965), and Blue Buttes SE (1997) quadrangle maps.



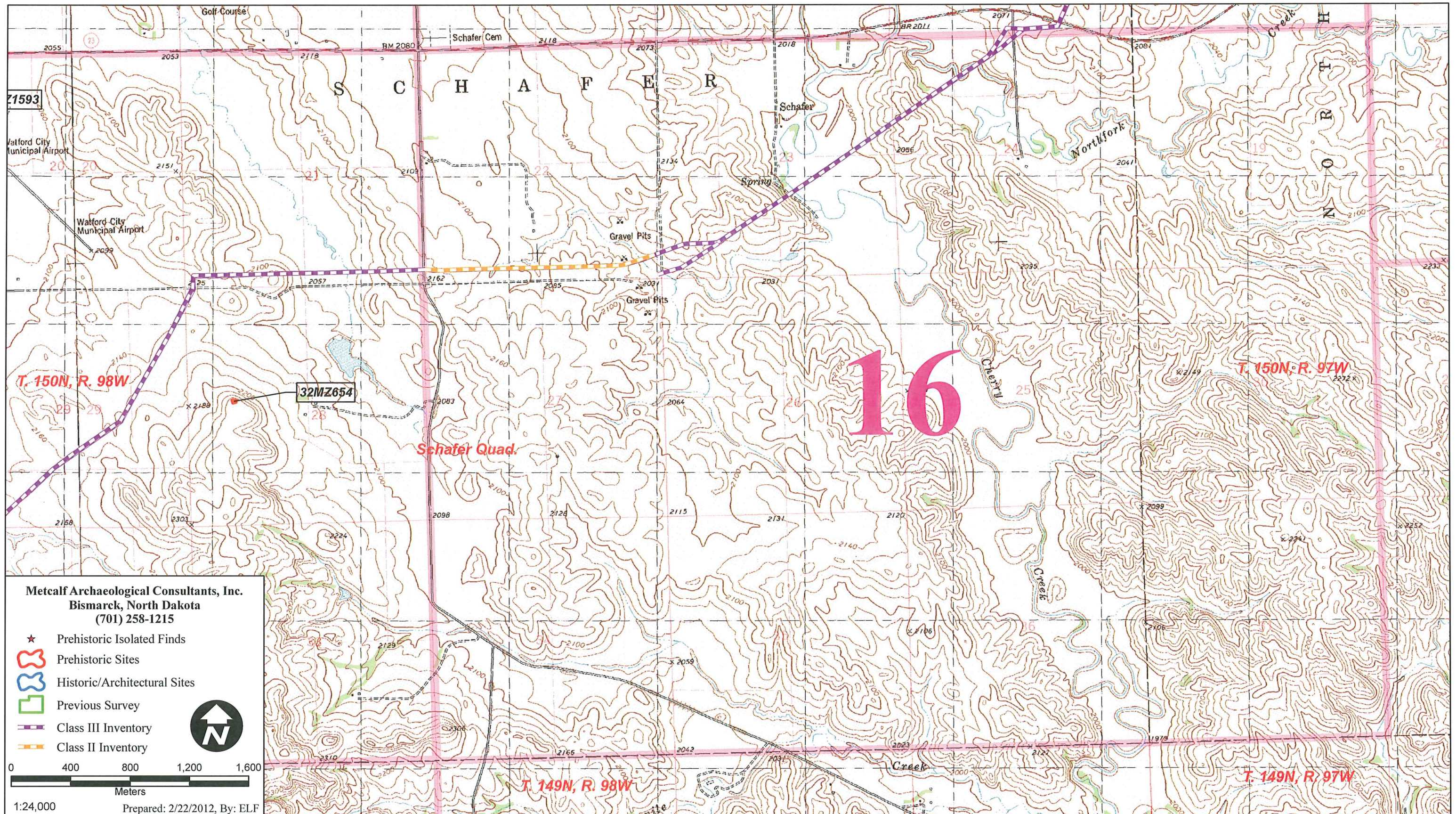




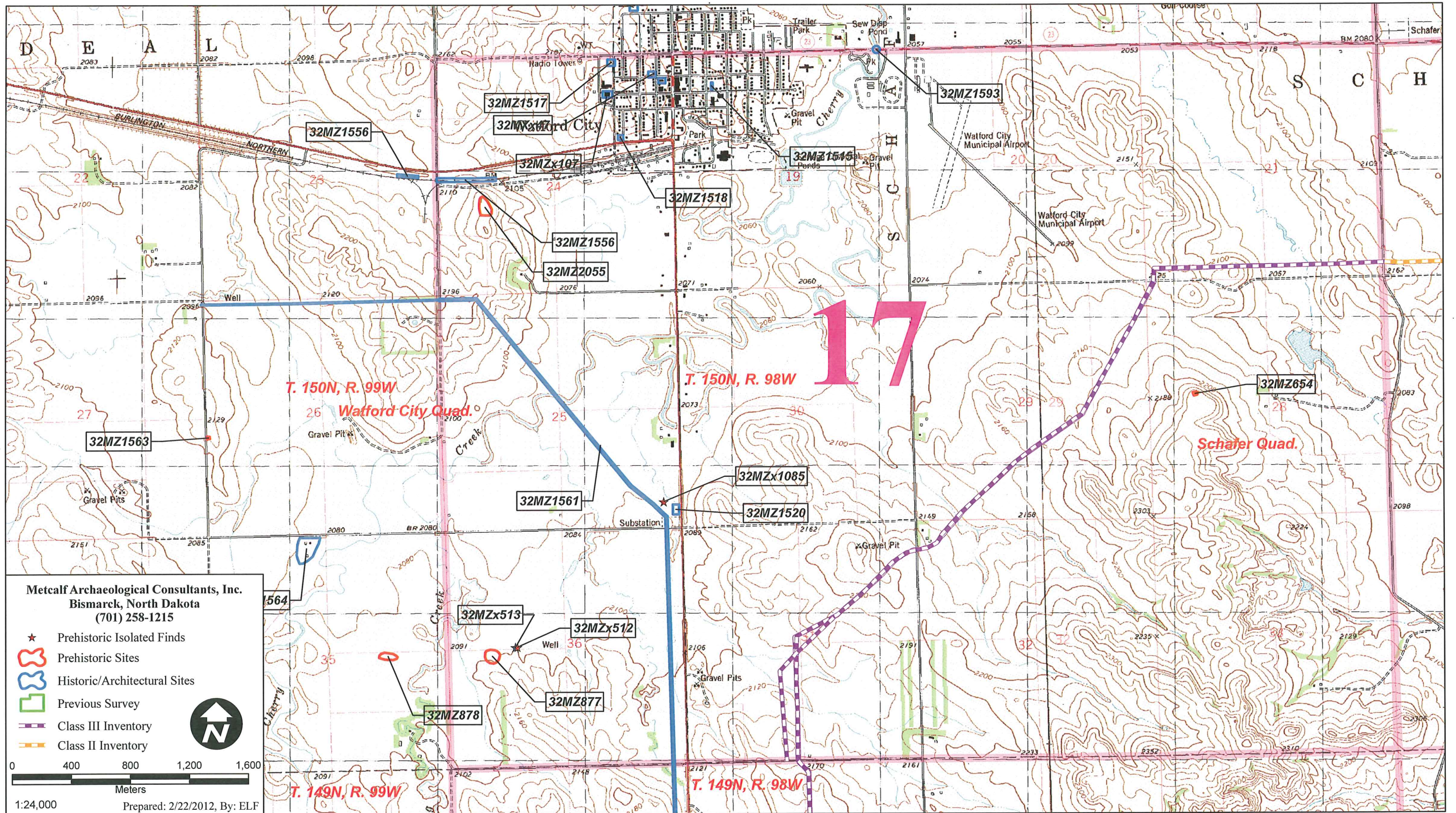
Map 14: Print Layout 14 - Location of the project corridor and site 32MZ2315 depicted on the USGS 7.5' Schafer SE (1997) and Schafer (1978) quadrangle maps.



Map 15: Print Layout 15 - Location of the project corridor and site 32MZ2314 depicted on the USGS 7.5' Schafer (1978) quadrangle map.

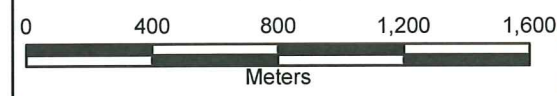


Map 16: Print Layout 16 - Location of the project corridor depicted on the USGS 7.5' Schafer (1978) quadrangle map.



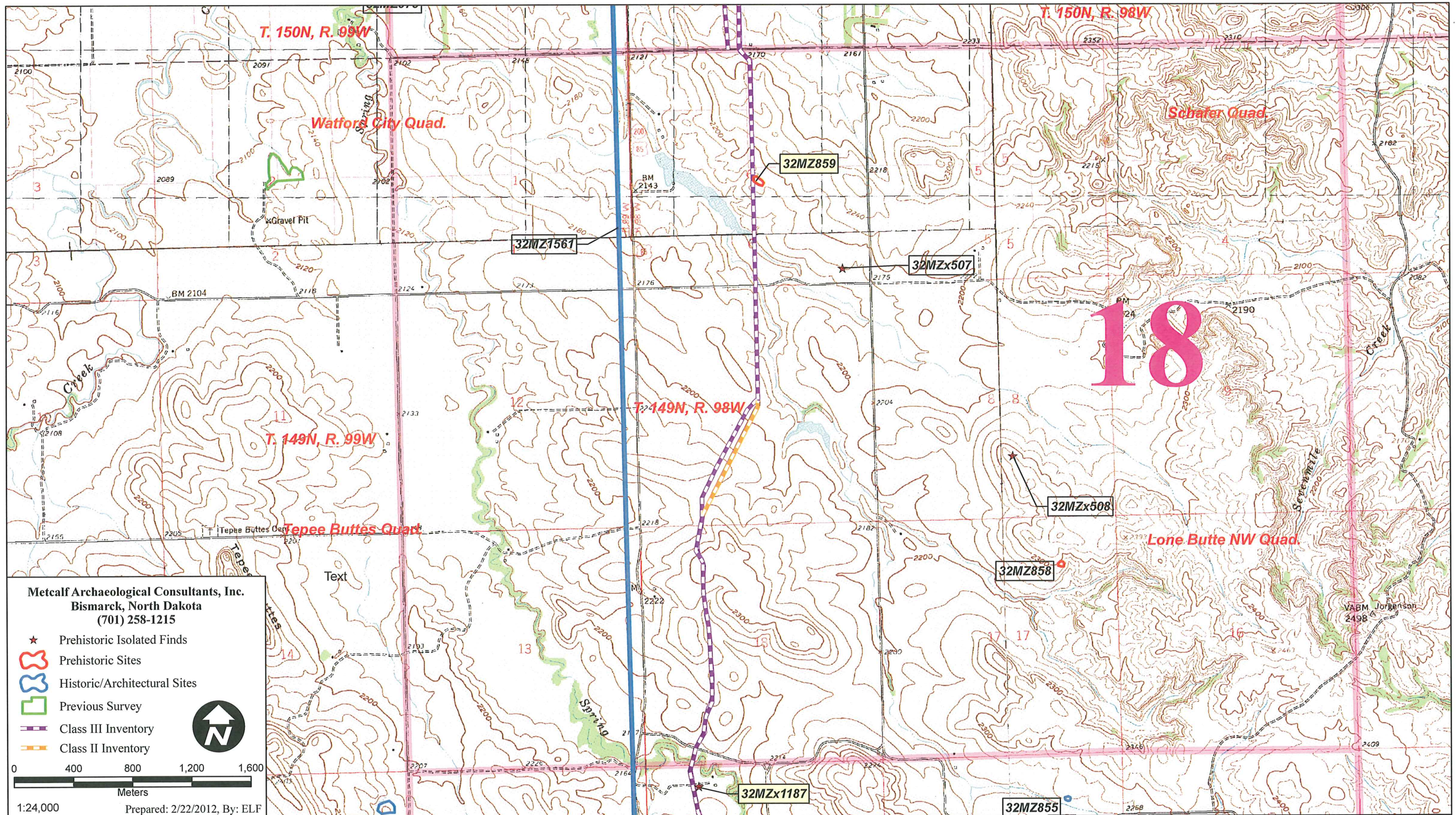
Metcalf Archaeological Consultants, Inc.
 Bismarck, North Dakota
 (701) 258-1215

- ★ Prehistoric Isolated Finds
- Prehistoric Sites
- Historic/Architectural Sites
- Previous Survey
- - - Class III Inventory
- - - Class II Inventory

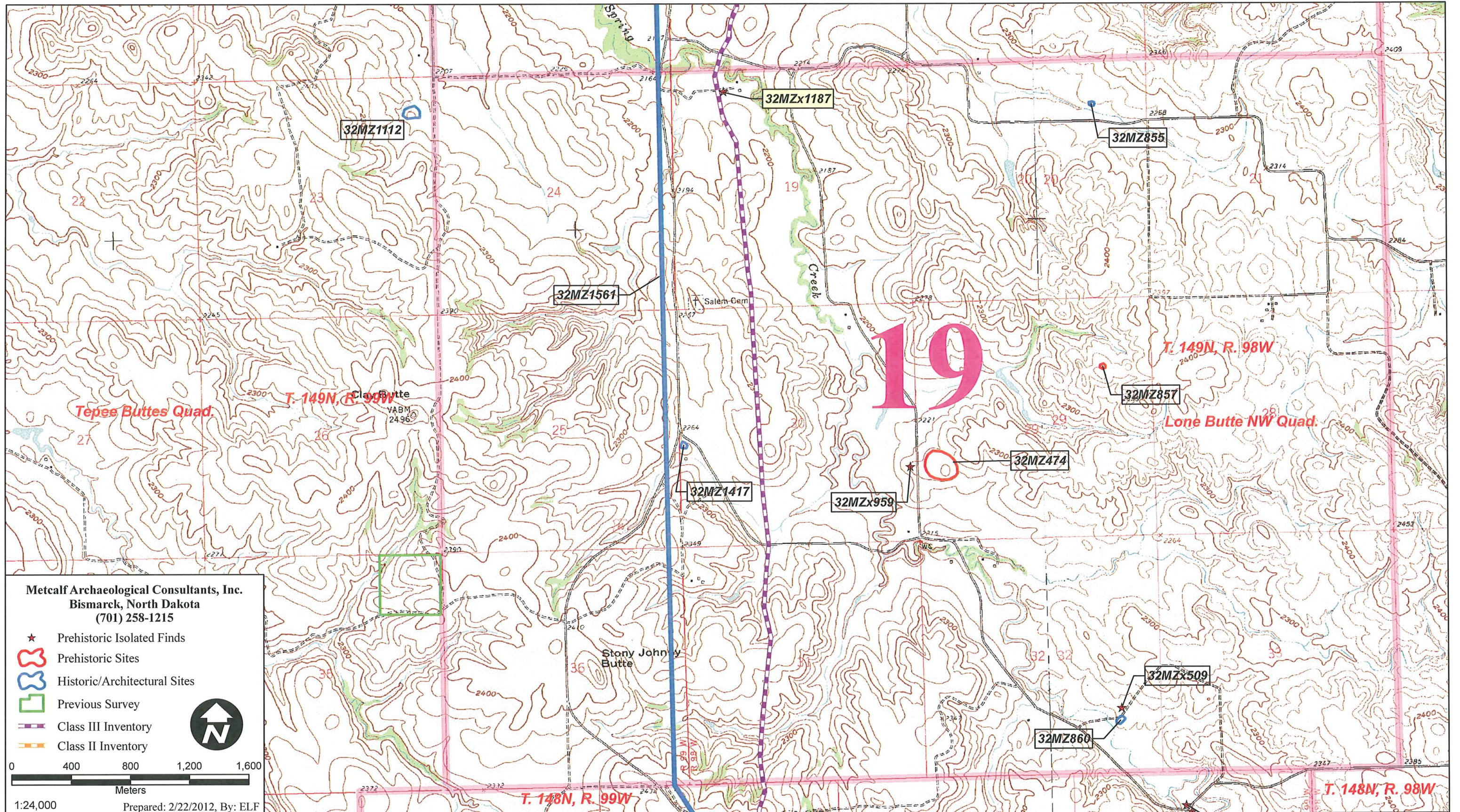


1:24,000 Prepared: 2/22/2012, By: ELF

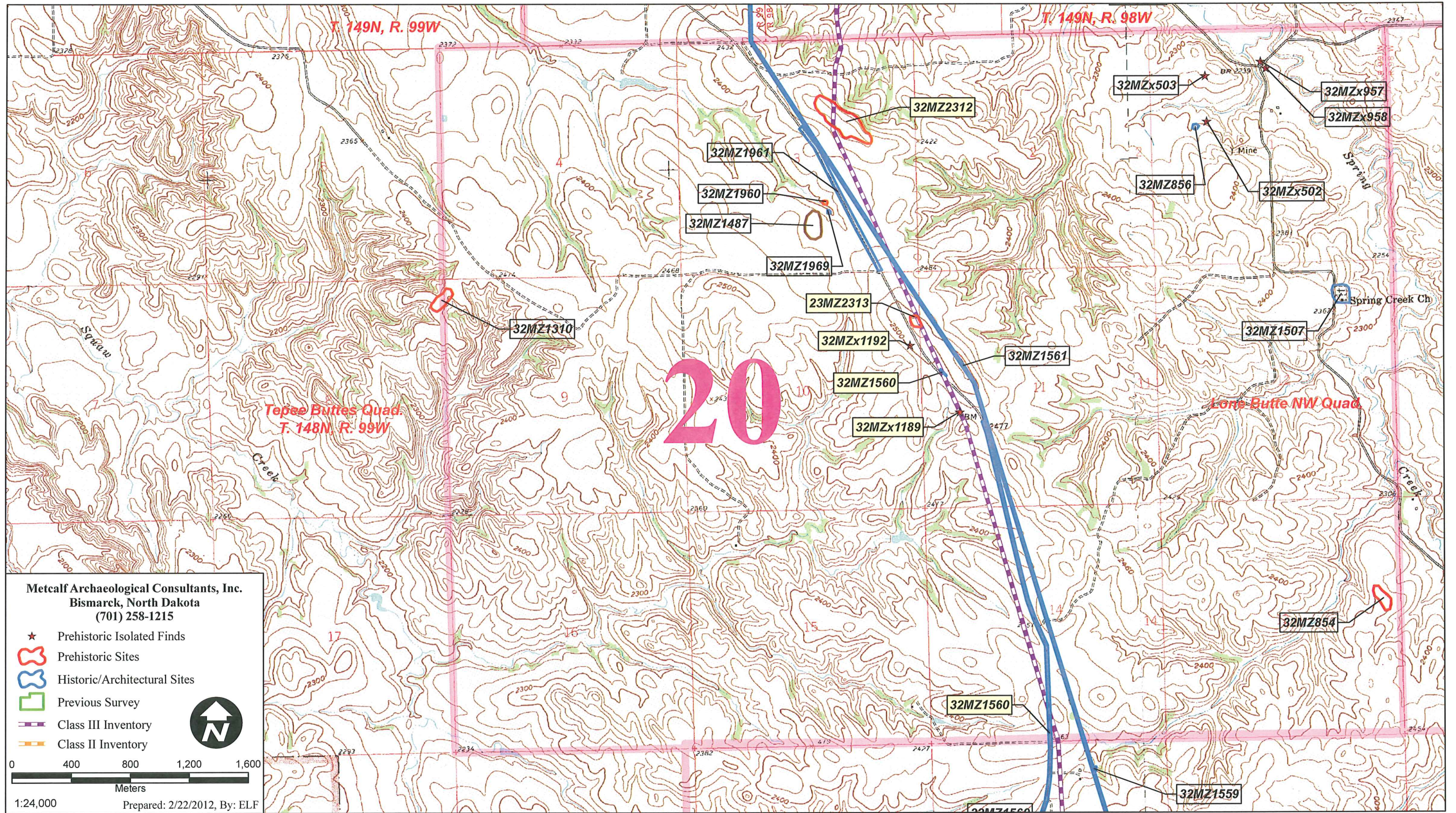
Map 17: Print Layout 17 - Location of the project corridor, sites and isolates depicted on the USGS 7.5' Schafer (1978) and Watford City (1978) quadrangle maps.



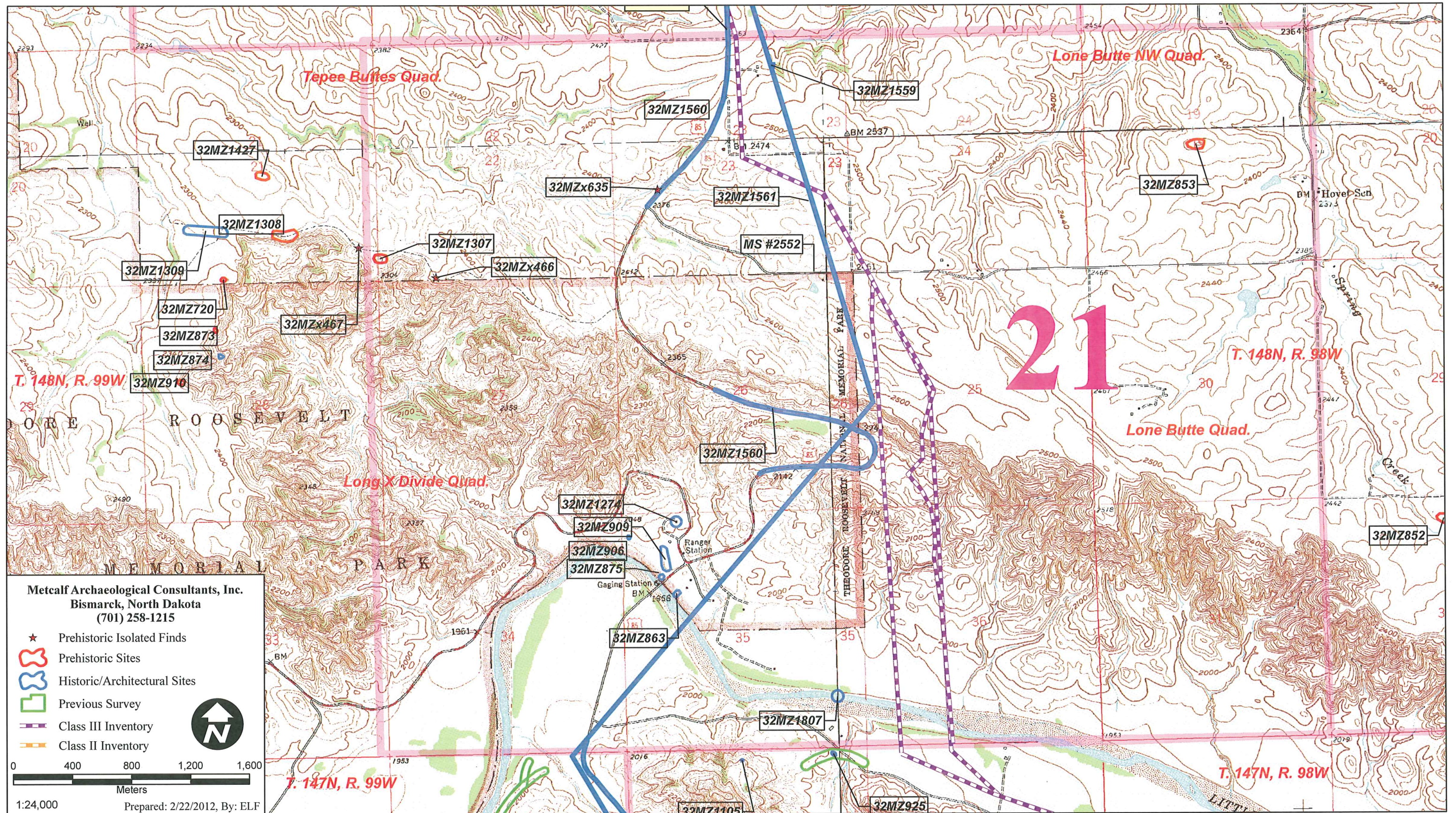
Map 18: Print Layout 18 - Location of the project corridor, updated site 32MZ859, previously known sites and isolates depicted on the USGS 7.5' Schafer (1978), Watfors City (1978), Tepee Buttes (1968), and Lone Butte NW (1959) quadrangle maps.



Map 19: Print Layout 19 - Location of the project corridor, isolate 32MZx1187, previously known sites and isolates depicted on the USGS 7.5' Tepee Buttes (1968), and Lone Butte NW (1959) quadrangle maps.



Map 20: Print Layout 20 - Location of the project corridor, sites 32MZ2312 and 32MZ2313, isolates 32MZx1189 and 32MZx1192, site update 32MZ1560, previously known sites and isolates depicted on the USGS 7.5' Tepee Buttes (1968), and Lone Butte NW (1959) quadrangle maps.



Map 21: Print Layout 21 - Location of the project corridor, and previously known sites and isolates depicted on the USGS 7.5' Tepee Buttes (1968), Lone Butte NW (1959), Long X Divide (1958), and Lone Butte (1958) quadrangle maps.