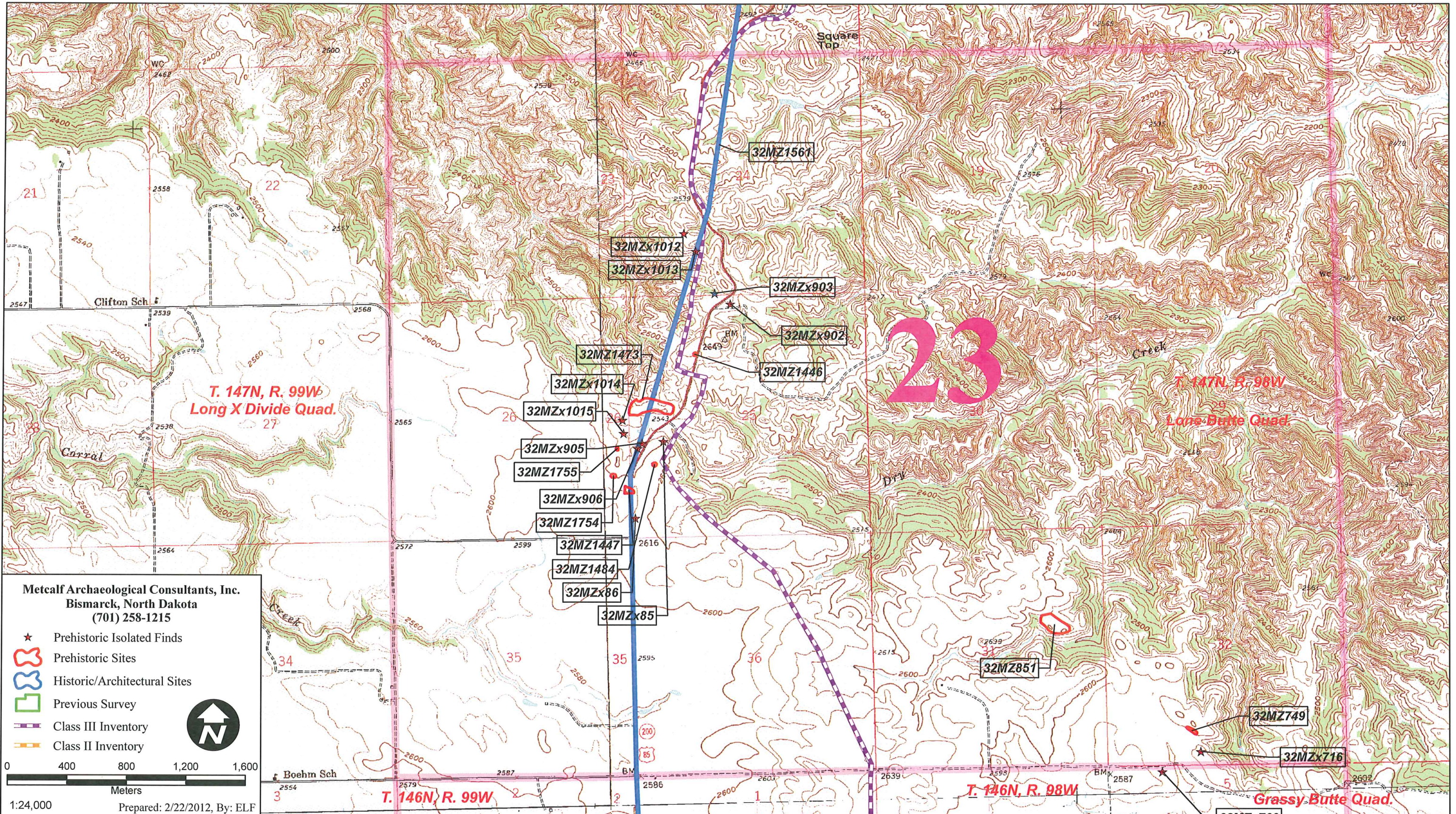
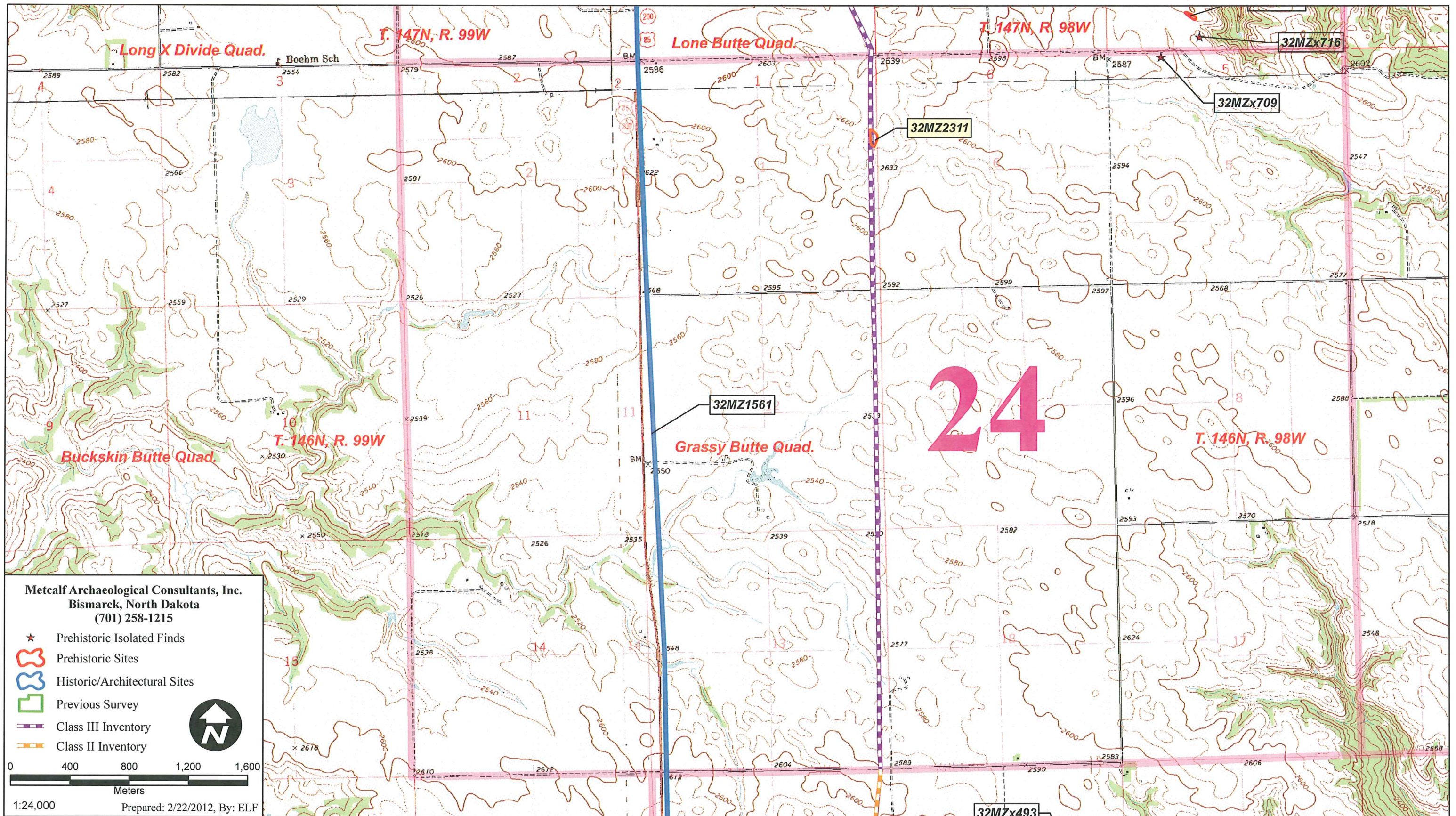


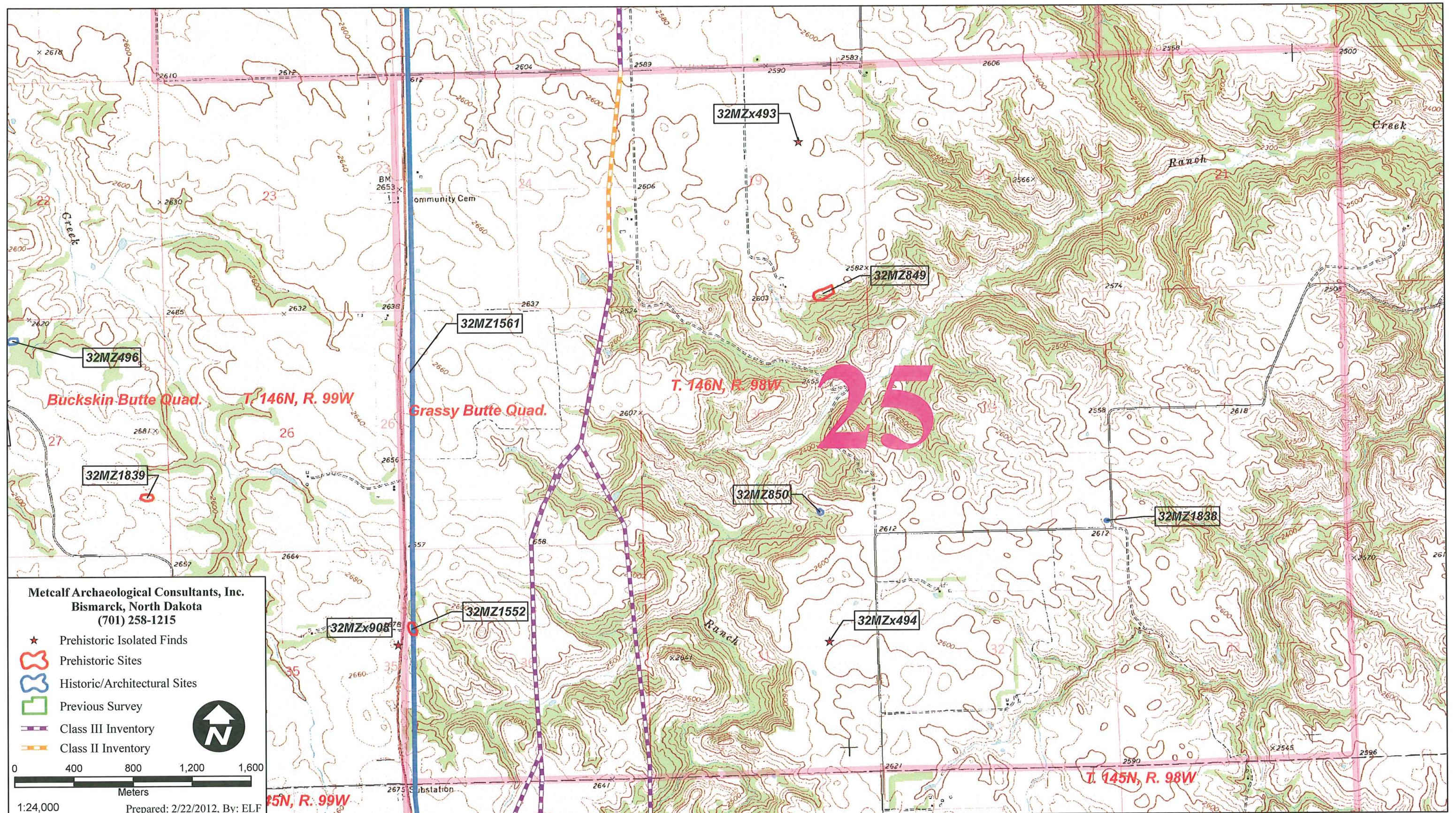
**Map 22:** Print Layout 22 - Location of the project corridor, site updates 32MZ1311, 32MZ1312, 32MZ1313, and 32MZ1314, and previously known sites and isolates depicted on the USGS 7.5' Long X Divide (1958) and Lone Butte (1958) quadrangle maps.



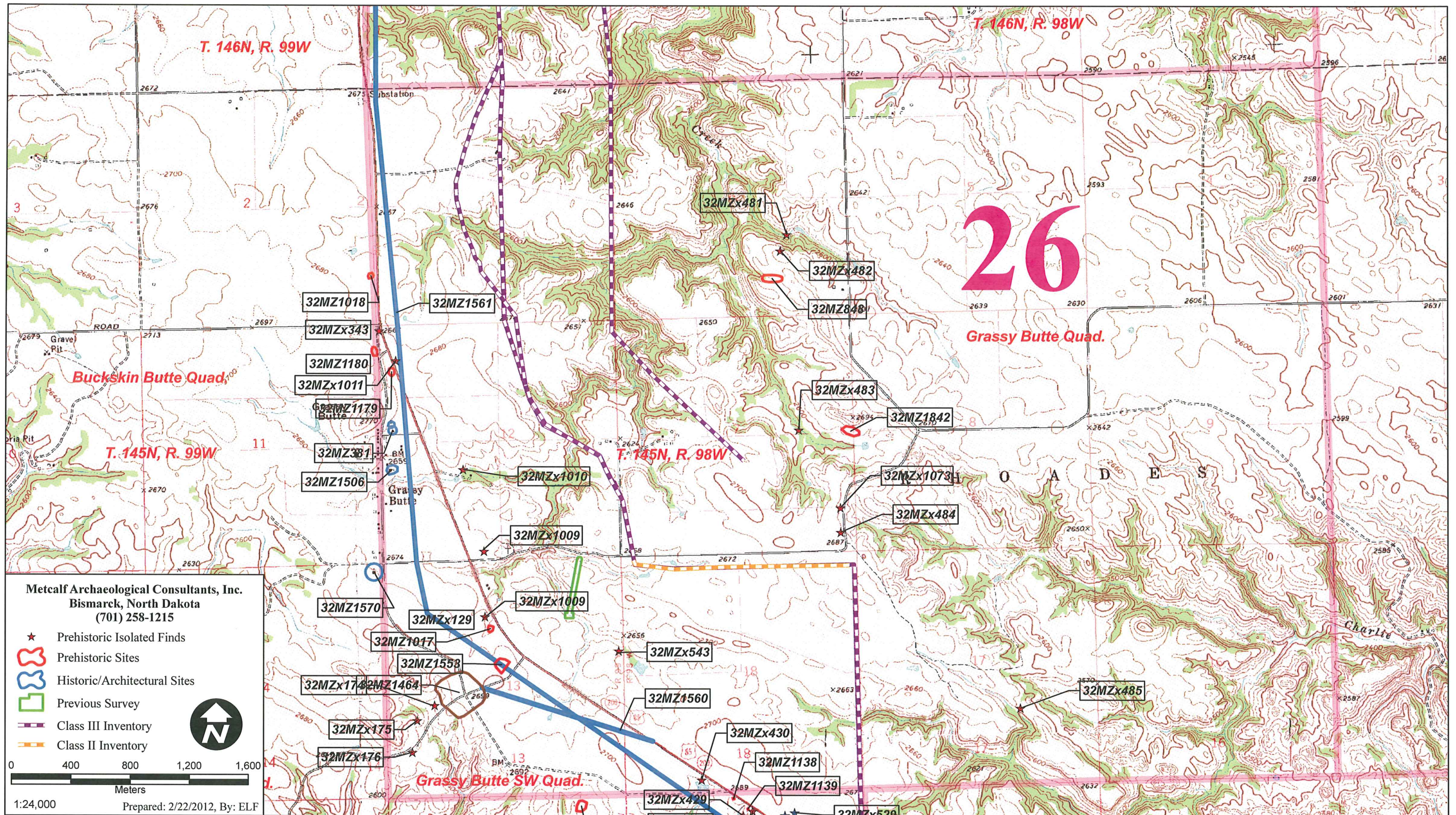
Map 23: Print Layout 23 - Location of the project corridor, and previously known sites and isolates depicted on the USGS 7.5' Long X Divide (1958) and Lone Butte (1958) quadrangle maps.



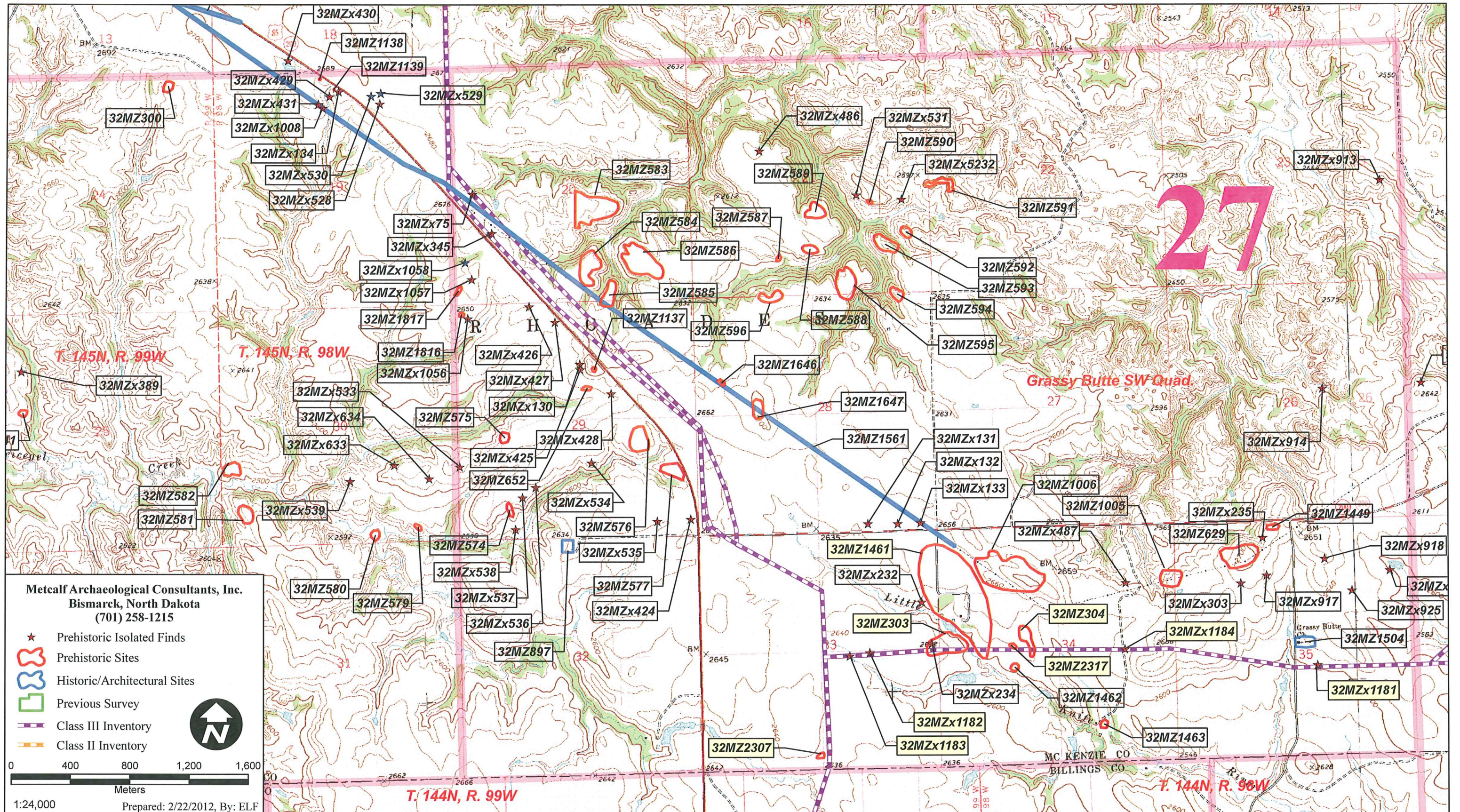
**Map 24:** Print Layout 24 - Location of the project corridor, site 32MZ2311, and previously known sites and isolates depicted on the USGS 7.5' Buckskin Butte (1974) and Grassy Butte (1974) quadrangle maps.



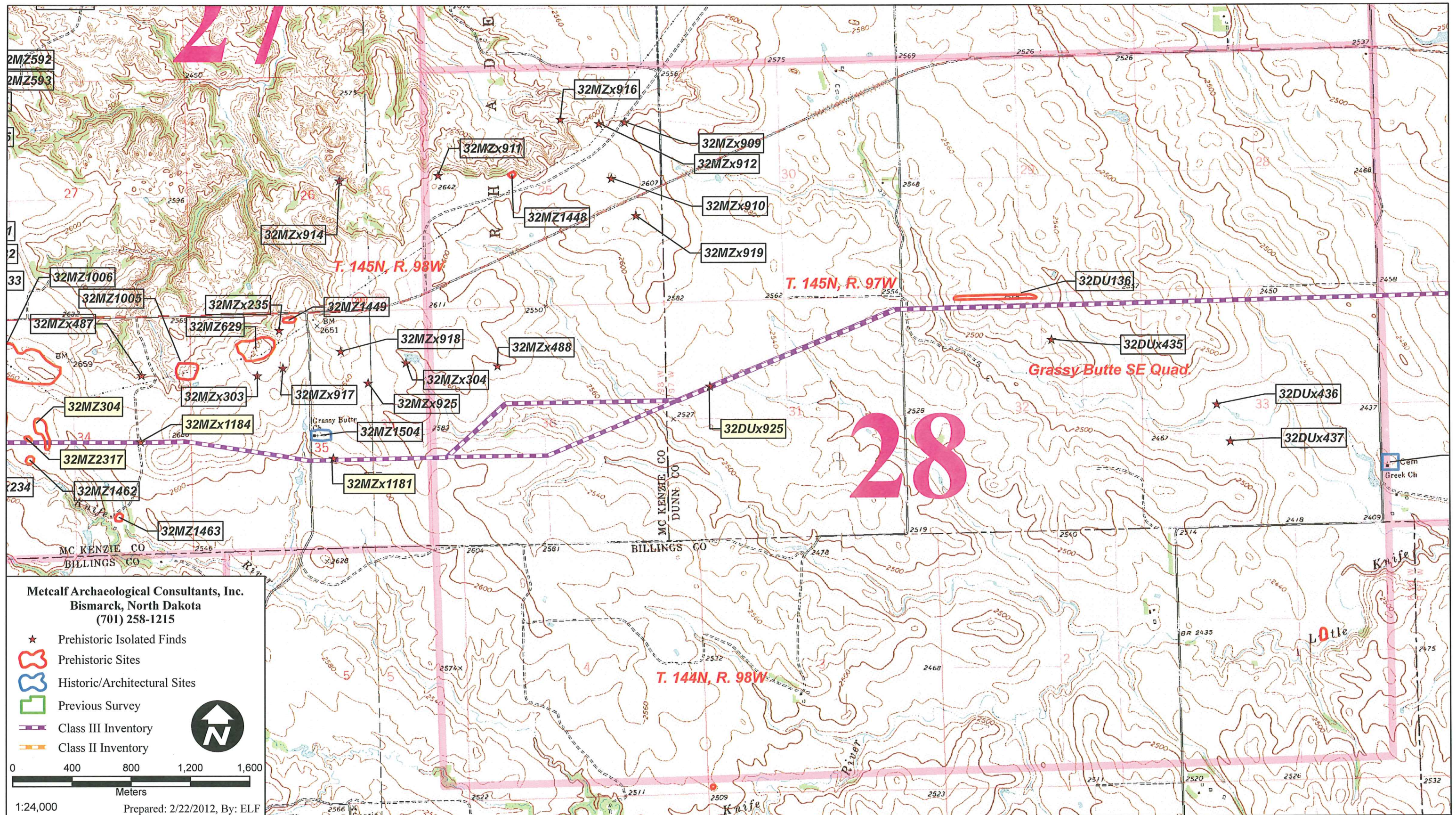
**Map 25:** Print Layout 25 - Location of the project corridor, and previously known sites and isolates depicted on the USGS 7.5' Grassy Butte (1974) quadrangle map.



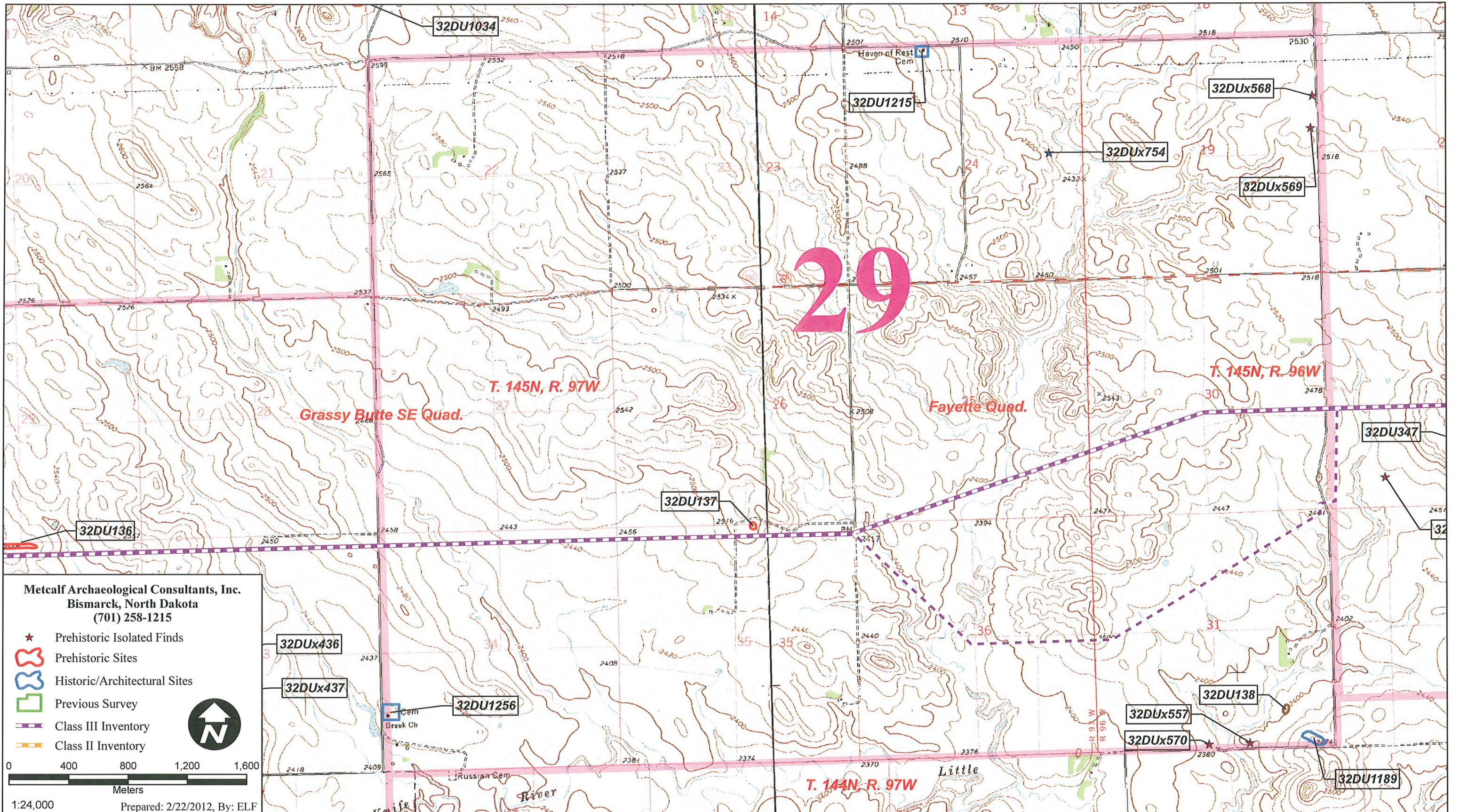
Map 26: Print Layout 26 - Location of the project corridor, and previously known sites and isolates depicted on the USGS 7.5' Grassy Butte (1974) quadrangle map.



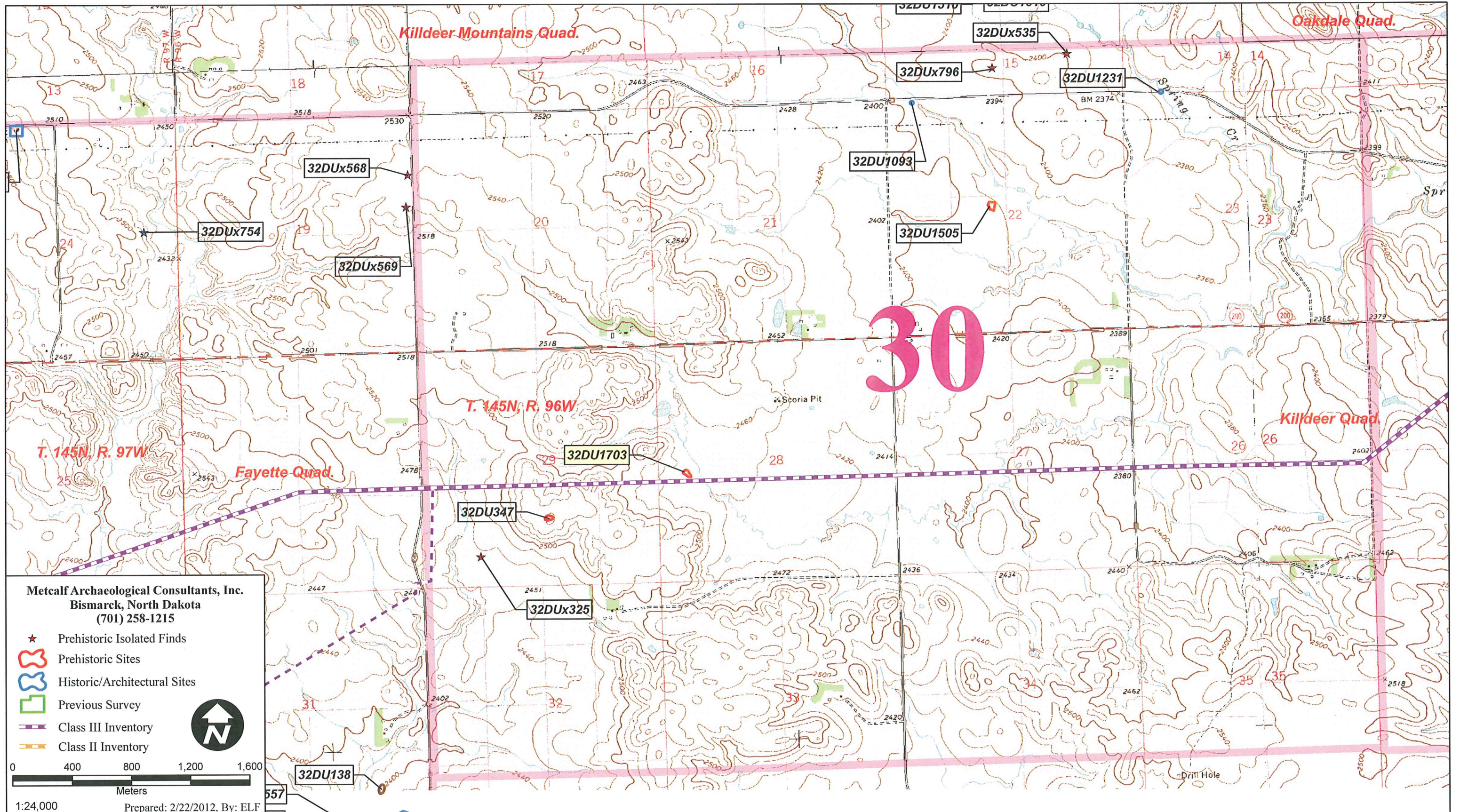
**Map 27:** Print Layout 27 - Location of the project corridor, sites 32MZ303, 32MZ304, 32MZ2307, 32MZ2317, isolates 32MZx1181, 32MZx1182, 32MZx1183, and 32MZx1184, site update 32MZ1461, and previously known sites and isolates depicted on the USGS 7.5' Grassy Butte SW (1974), and Grassy Butte SE (1974) quadrangle maps.



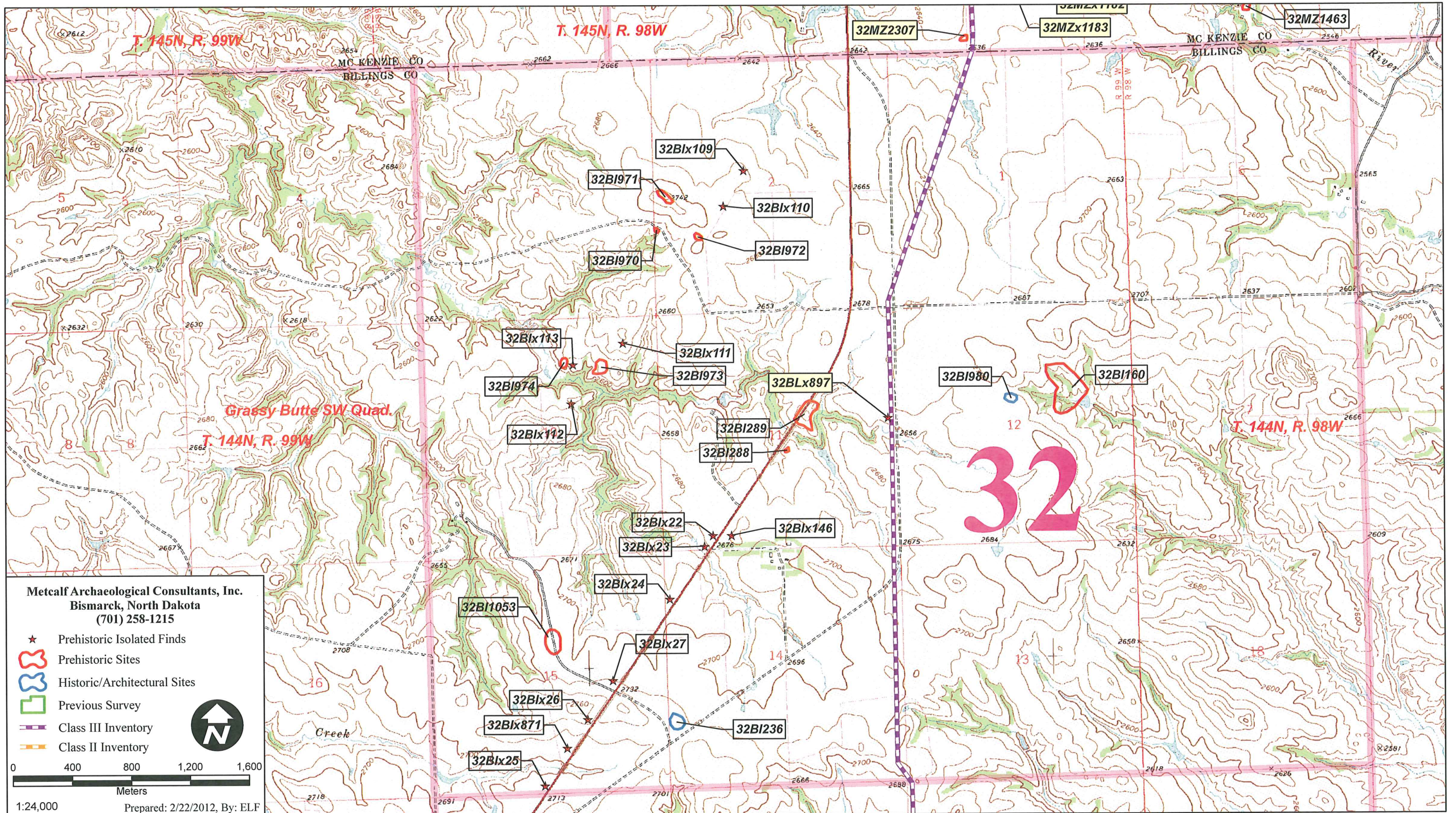
Map 28: Print Layout 28 - Location of the project corridor, isolate 32DUx925, and previously known sites and isolates depicted on the USGS 7.5' Grassy Butte SE (1974) quadrangle map.



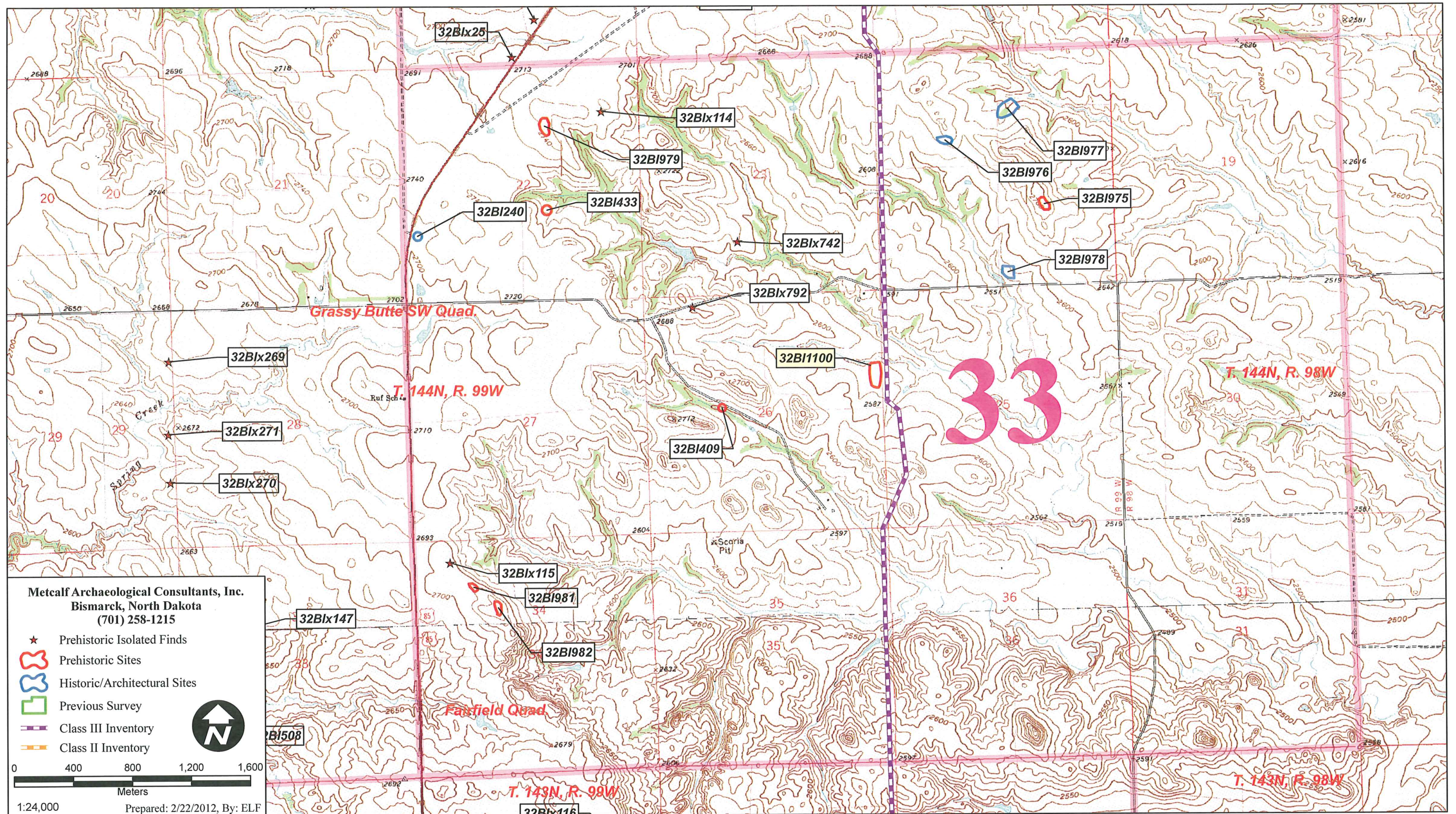
Map 29: Print Layout 29 - Location of the project corridor, and previously known sites and isolates depicted on the USGS 7.5' Grassy Butte SE (1974), and Fayette (1974) quadrangle maps.



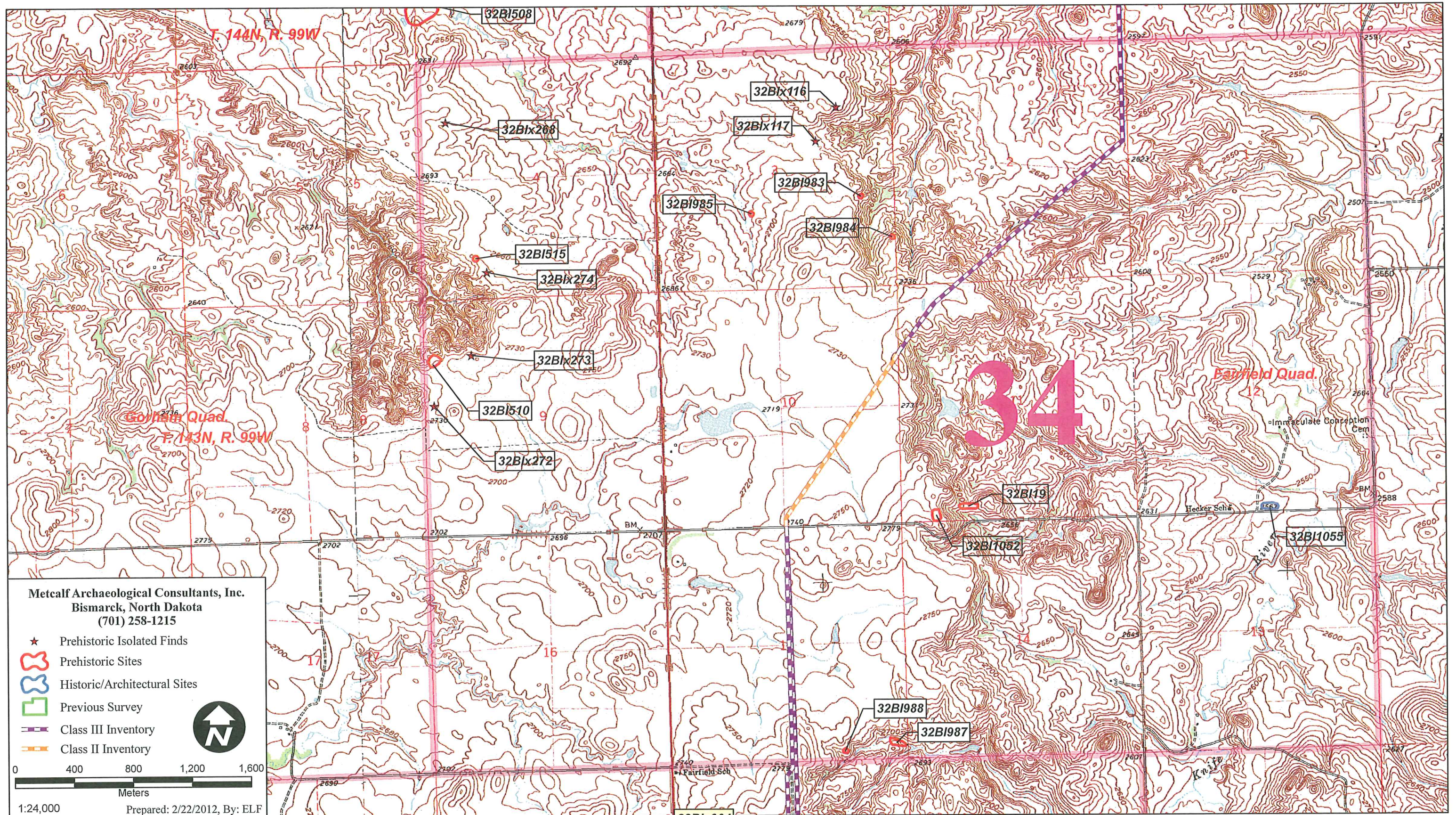




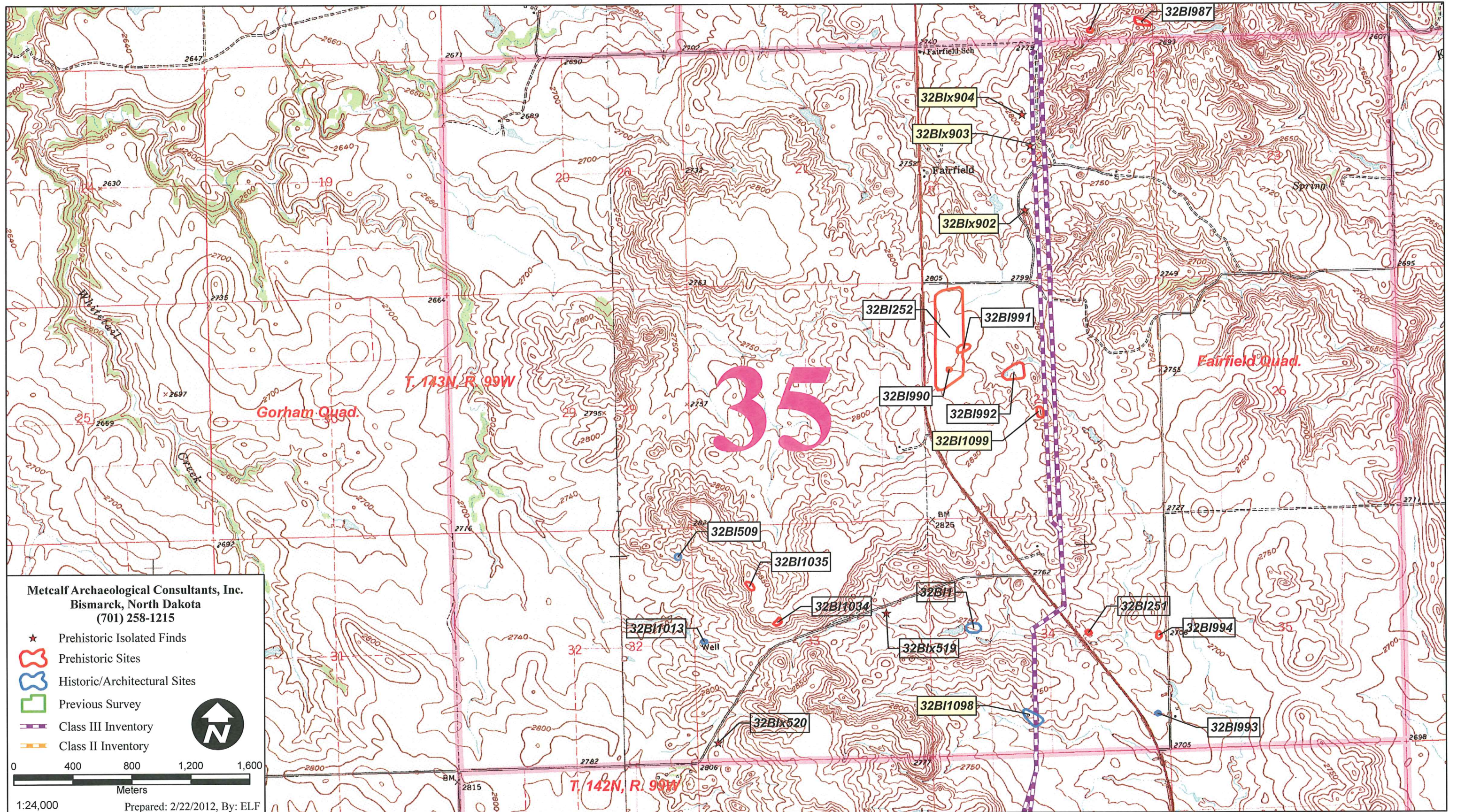
**Map 32:** Print Layout 32 - Location of the project corridor, isolate 32BIx897, and previously known sites and isolates depicted on the USGS 7.5' Grassy Butte SW (1974) quadrangle map.



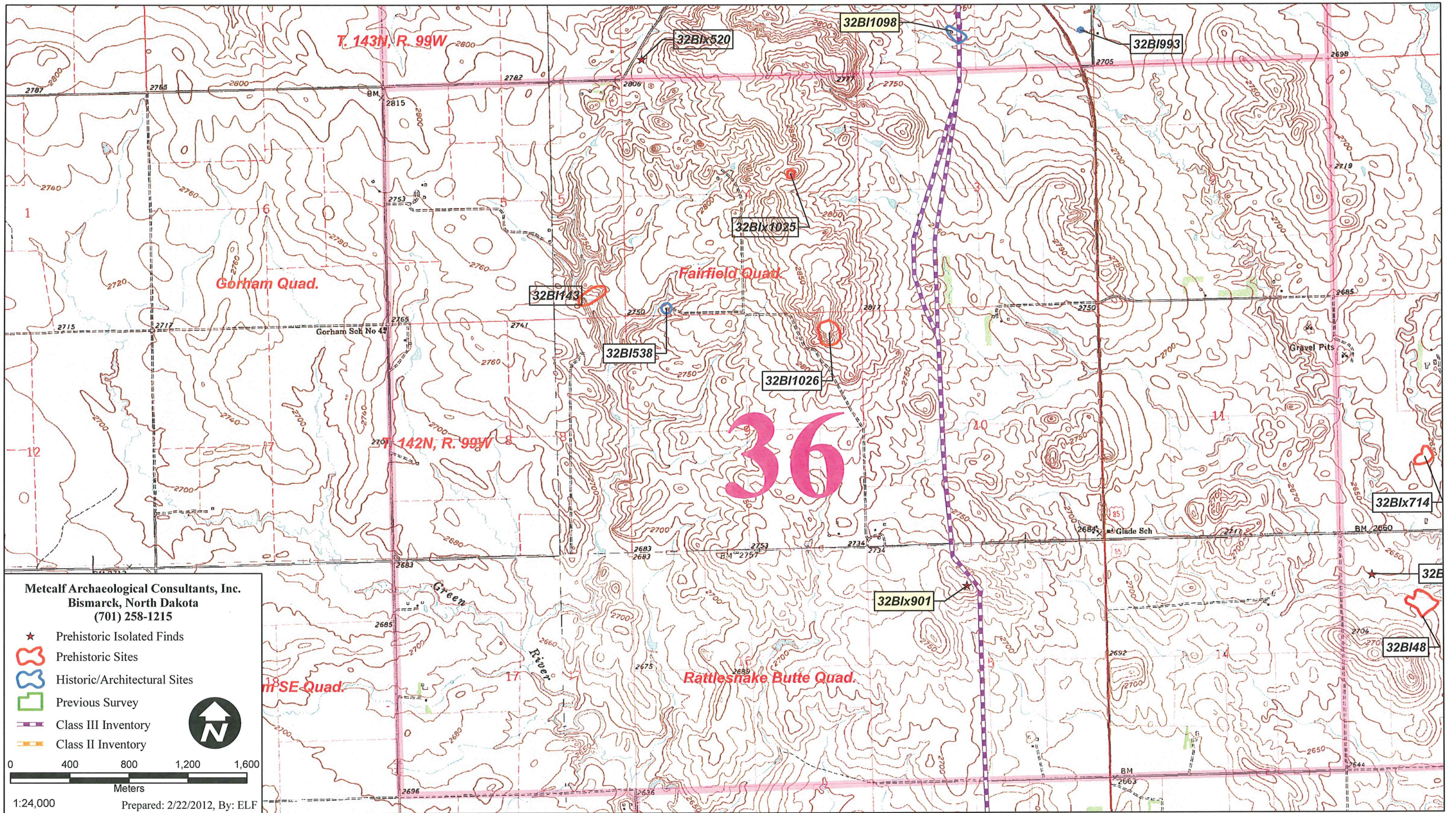
Map 33: Print Layout 33 - Location of the project corridor, site 32BI1100, and previously known sites and isolates depicted on the USGS 7.5' Grassy Butte SW (1974), and Fairfield (1963) quadrangle maps.



Map 34: Print Layout 34 - Location of the project corridor, and previously known sites and isolates depicted on the USGS 7.5' Fairfield (1963) quadrangle map.



**Map 35:** Print Layout 35 - Location of the project corridor, sites 32BI1098 and 32BI1099, isolates 32BIx902, 32BIx903, 32BIx904, and previously known sites and isolates depicted on the USGS 7.5' Fairfield (1963) quadrangle map.



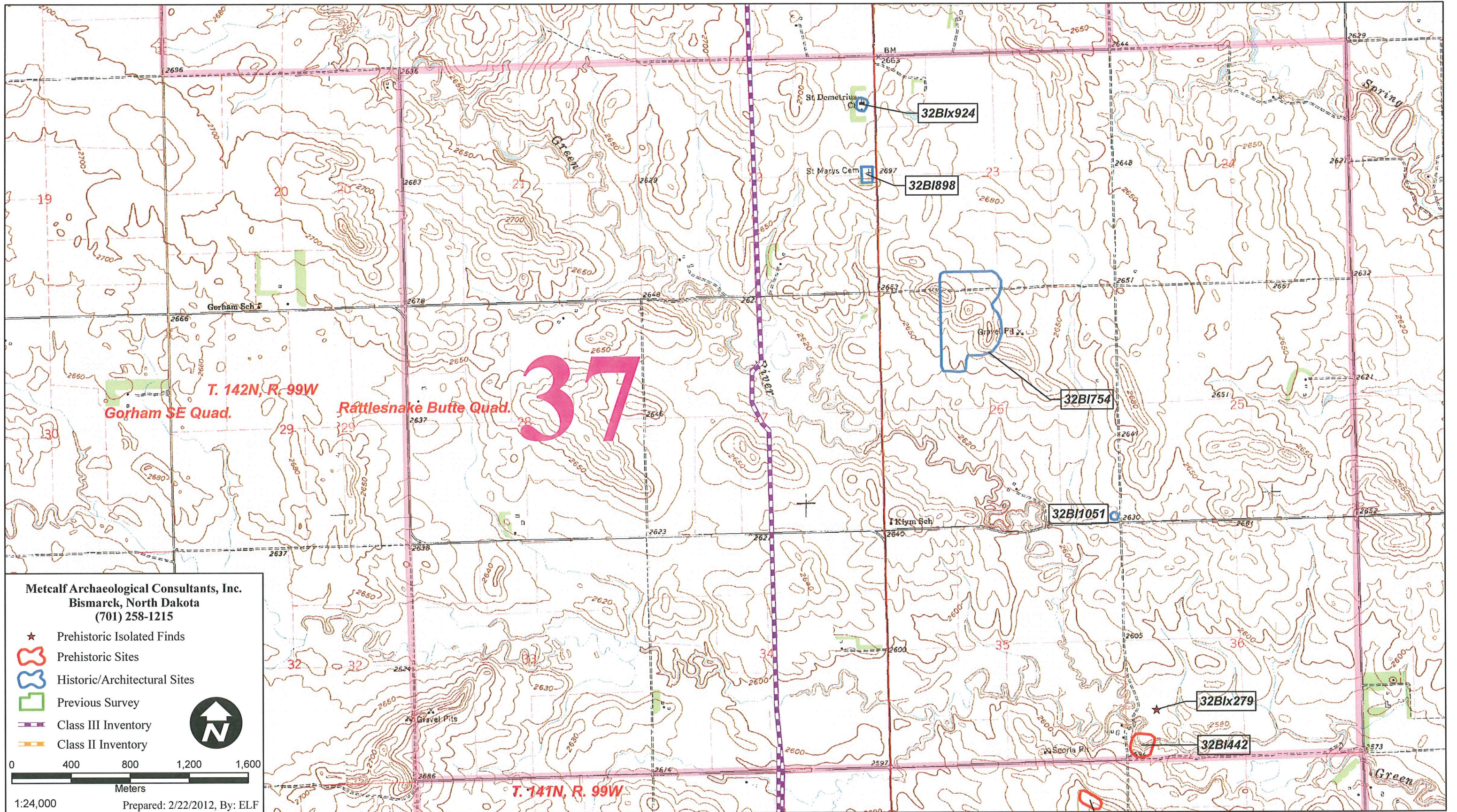
**Metcalf Archaeological Consultants, Inc.**  
 Bismarck, North Dakota  
 (701) 258-1215

- ★ Prehistoric Isolated Finds
- Red outline Prehistoric Sites
- Blue outline Historic/Architectural Sites
- Green outline Previous Survey
- Purple dashed line Class III Inventory
- Orange dashed line Class II Inventory

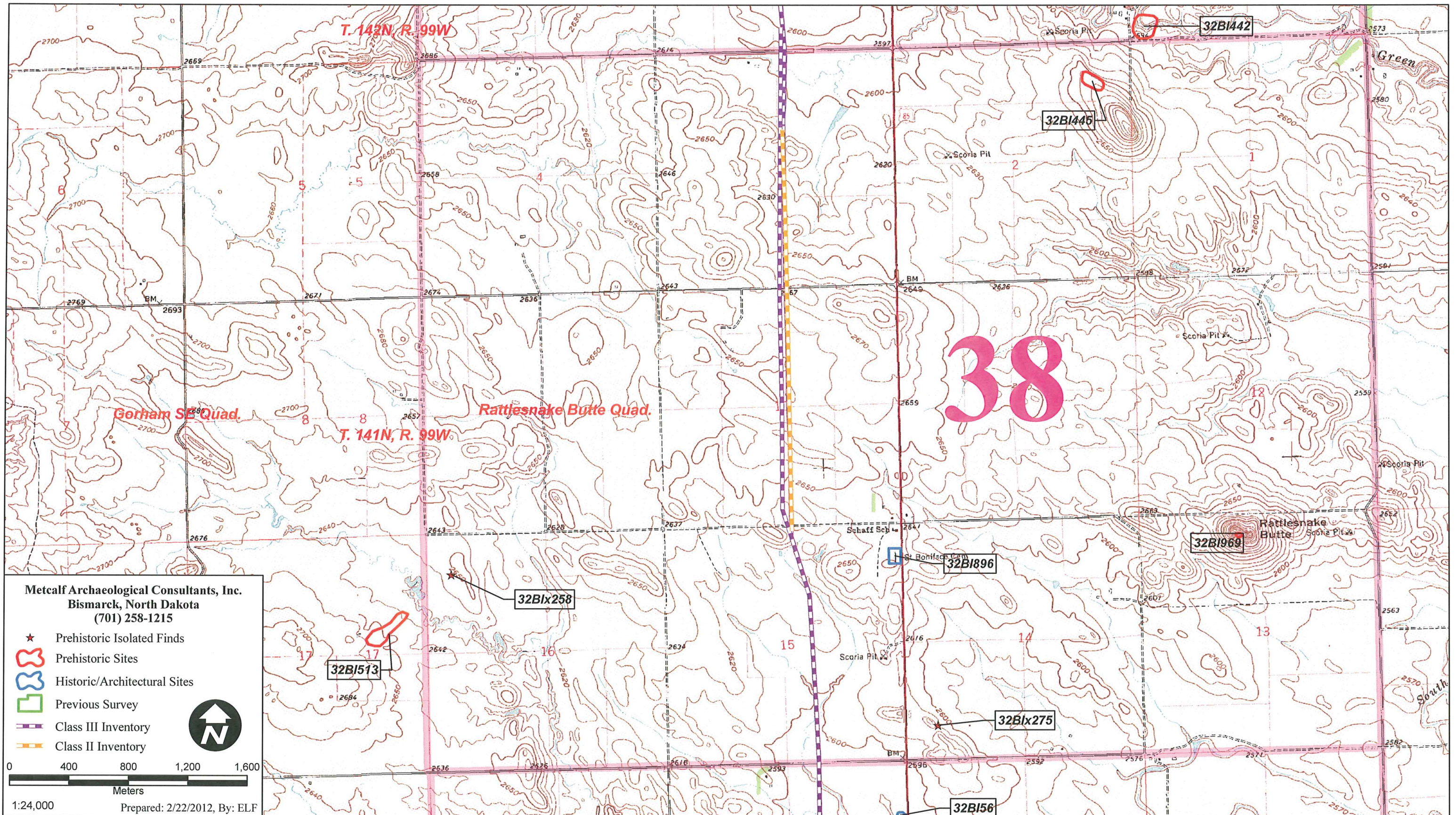
0 400 800 1,200 1,600  
 Meters

1:24,000 Prepared: 2/22/2012, By: ELF

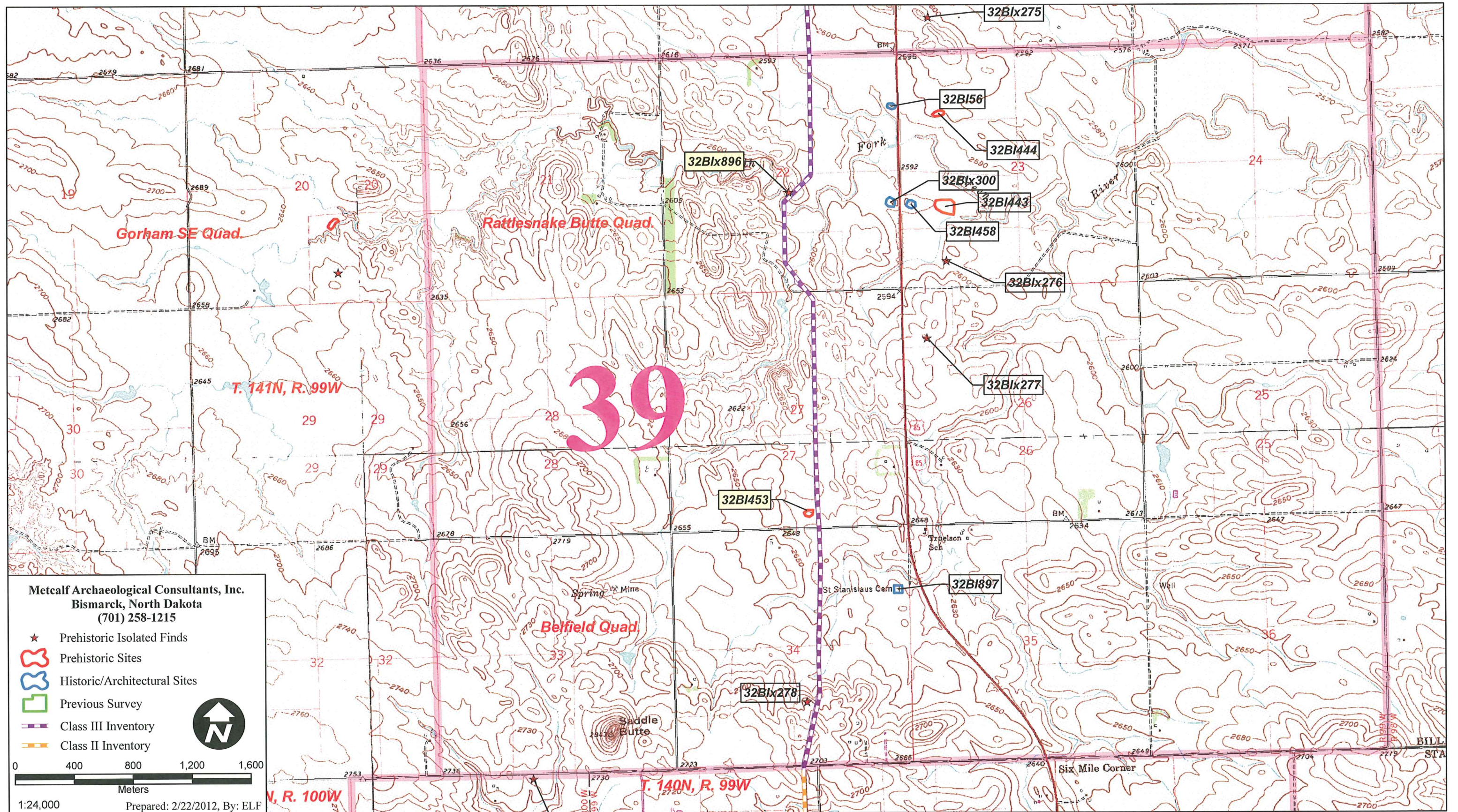
**Map 36:** Print Layout 36 - Location of the project corridor, isolate 32Bix901, and previously known sites and isolates depicted on the USGS 7.5' Fairfield (1963), and Rattlesnake Butte (1963) quadrangle maps.



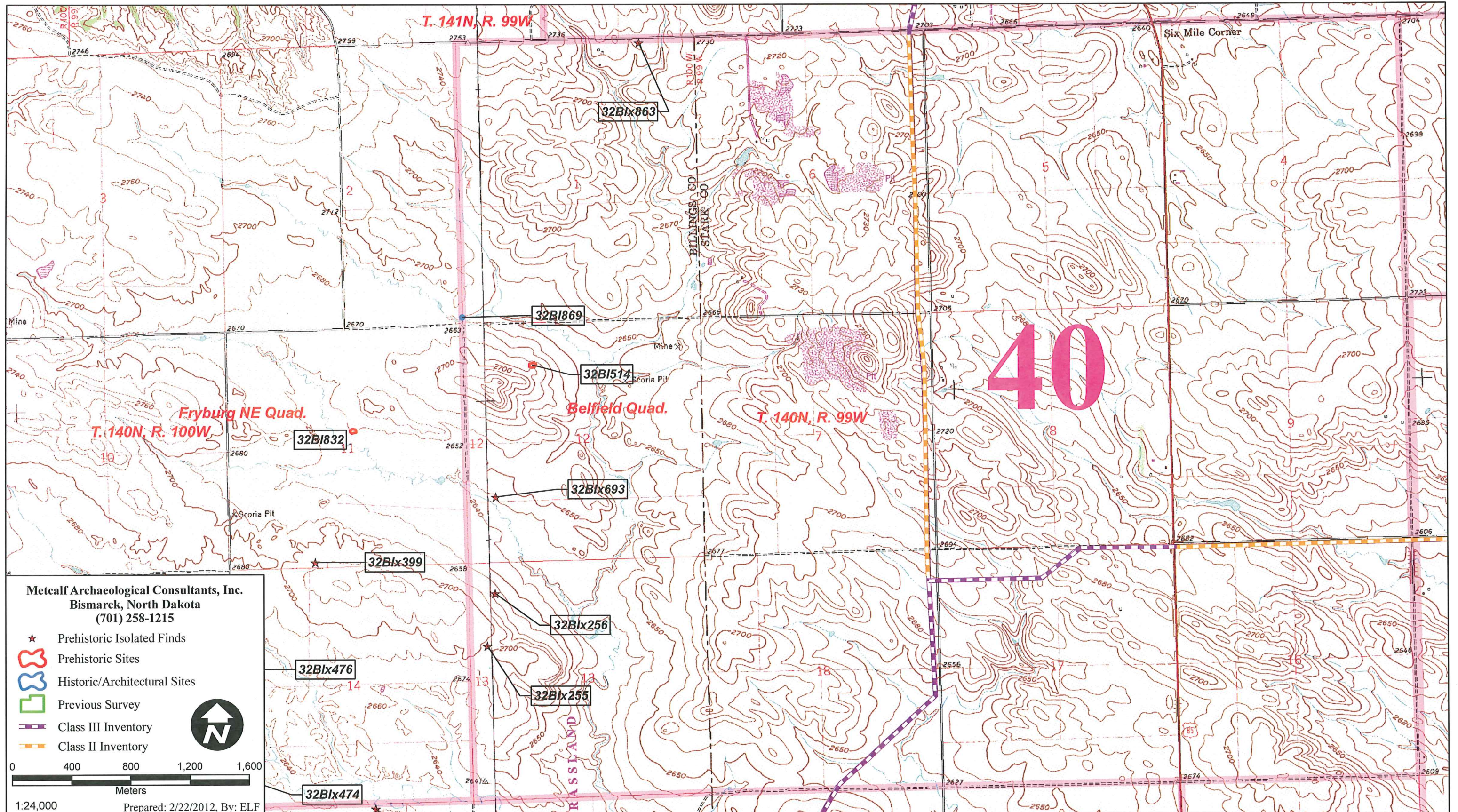
Map 37: Print Layout 37 - Location of the project corridor, and previously known sites and isolates depicted on the USGS 7.5' Rattlesnake Butte (1963) quadrangle map.



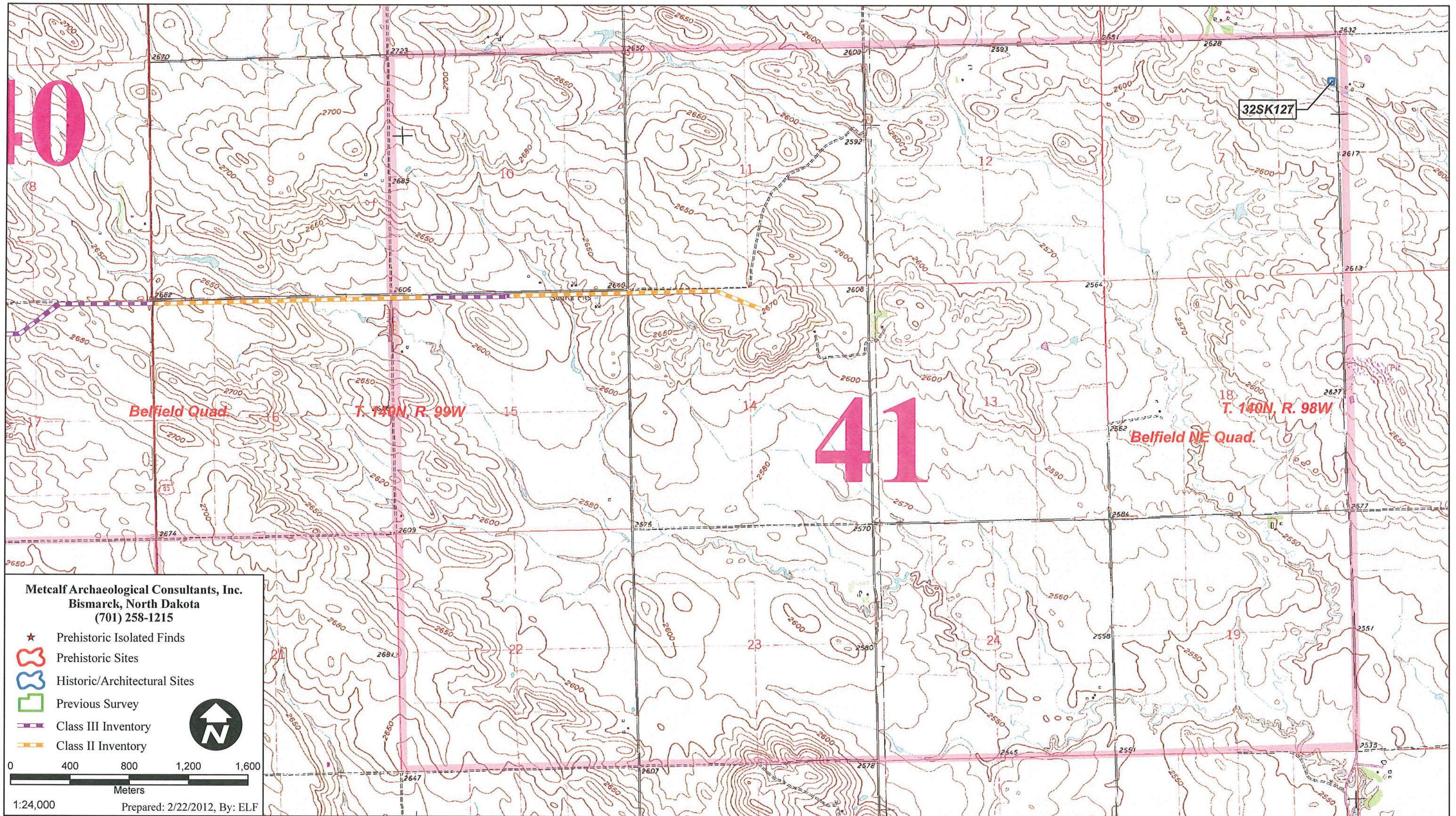
**Map 38:** Print Layout 38 - Location of the project corridor, and previously known sites and isolates depicted on the USGS 7.5' Rattlesnake Butte (1963) quadrangle map.



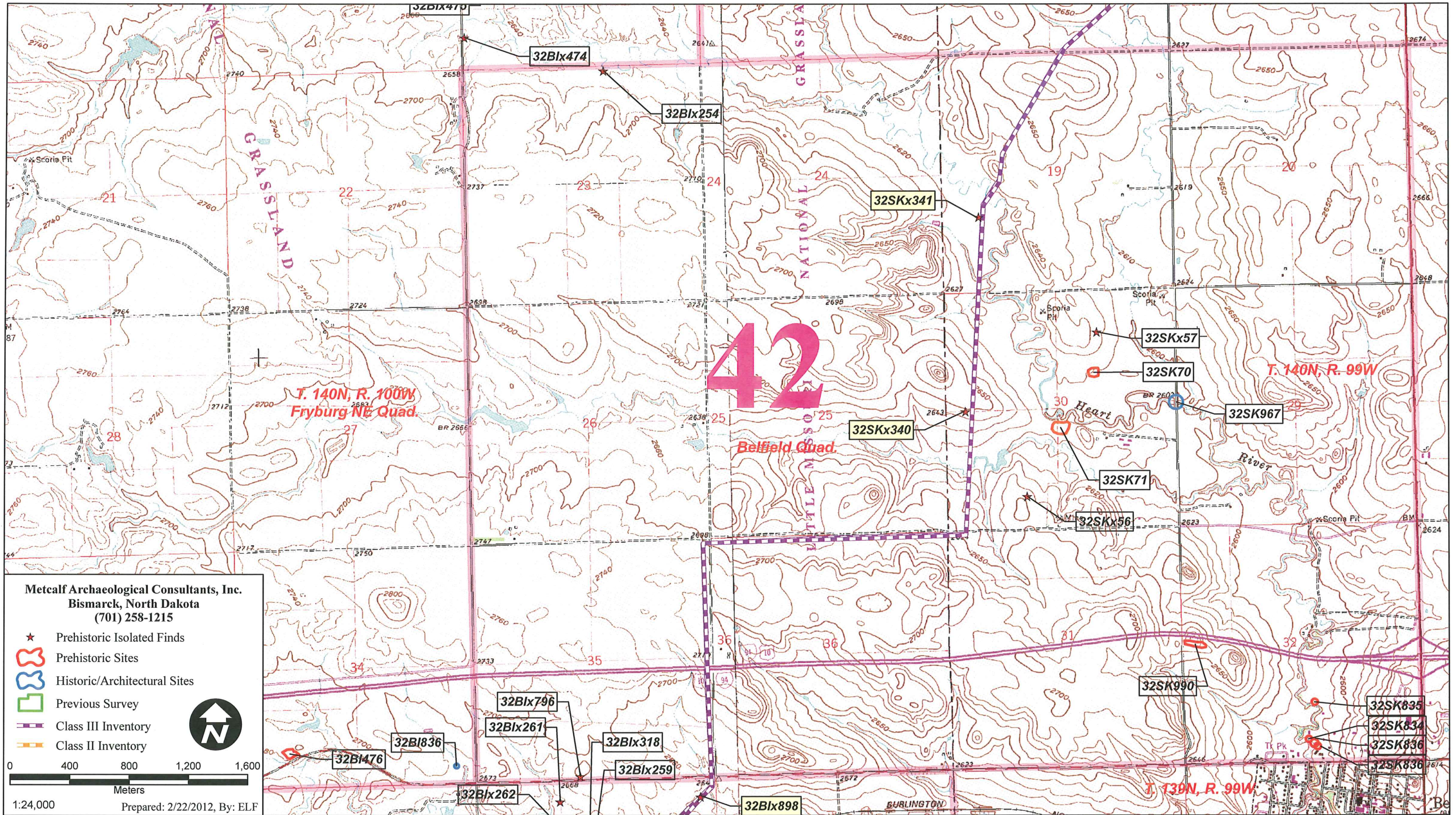
**Map 39:** Print Layout 39 - Location of the project corridor, isolate 32BIx896, site update 32BI453, and previously known sites and isolates depicted on the USGS 7.5' Rattlesnake Butte (1963), and Belfield (1962, photorevised 1981) quadrangle maps.



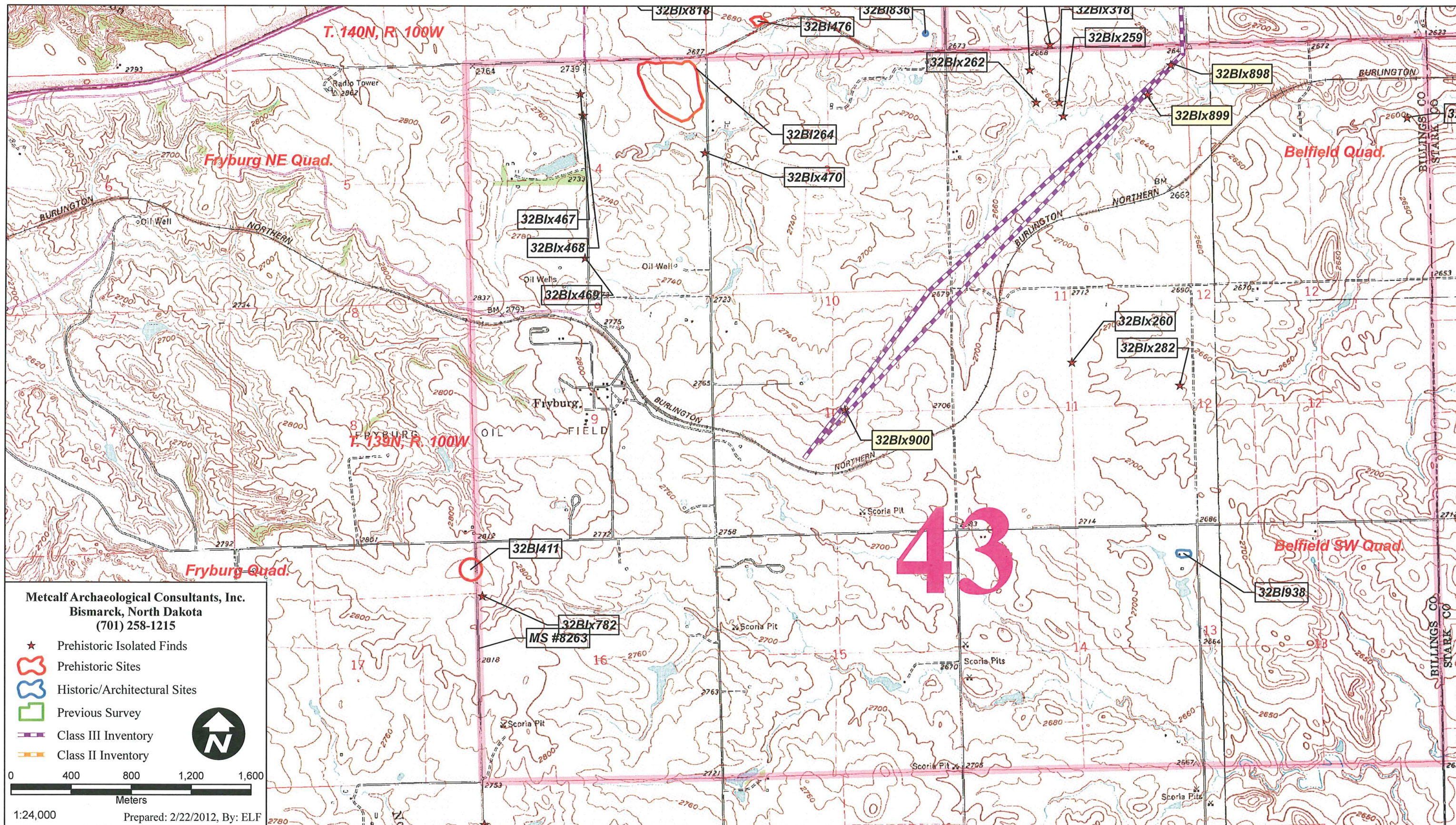
**Map 40:** Print Layout 40 - Location of the project corridor, and previously known sites and isolates depicted on the USGS 7.5' Belfield (1962, photorevised 1981) quadrangle map.



**Map 41:** Print Layout 41 - Location of the project corridor, and previously known sites depicted on the USGS 7.5' Belfield (1962, photorevised 1981), and Belfield NE (1962, photorevised 1981) quadrangle maps.



**Map 42:** Print Layout 42 - Location of the project corridor, isolates 32SKx340 and 32SKx341, and previously known sites and isolates depicted on the USGS 7.5' Fryburg NE (1962, photorevised 1981), and Belfield (1962, photorevised 1981) quadrangle maps.



**Map 43:** Print Layout 43 - Location of the project corridor, isolates 32Bix898, 32Bix899, and 32Bix900, and previously known sites and isolates depicted on the USGS 7.5' Fryburg NE (1962, photorevised 1981), Fryburg (1962), Belfield (1962, photorevised 1981), and Belfield SW (1962) quadrangle maps.