


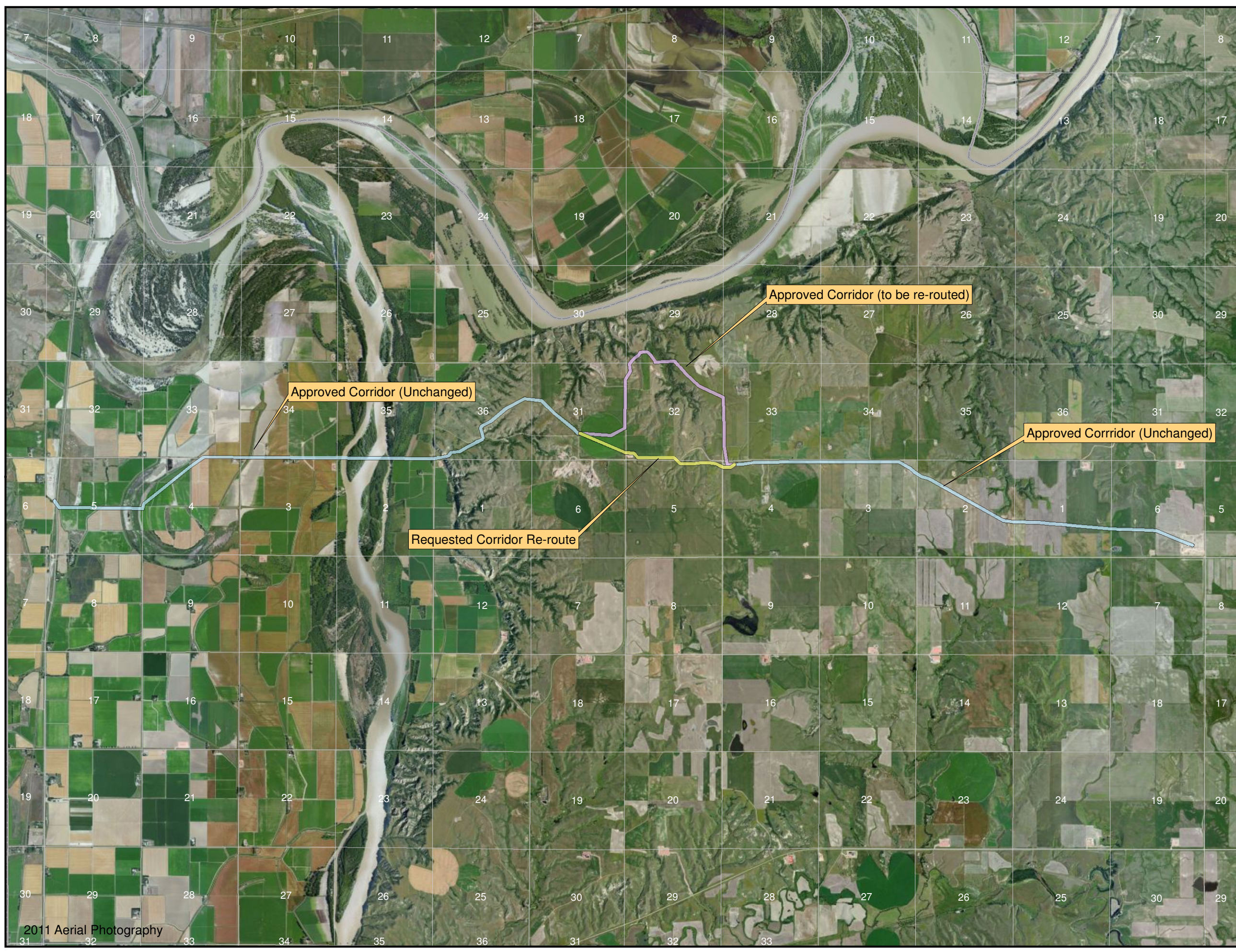


Hiland 6" NGL Pipeline 200' Corridor Map PU-10-554

(With Requested Re-route)
(Revised April 17, 2012)

Legend

-  Requested Reroute Corridor
-  Approved and Unchanged Corridor
-  Approved Route Corridor

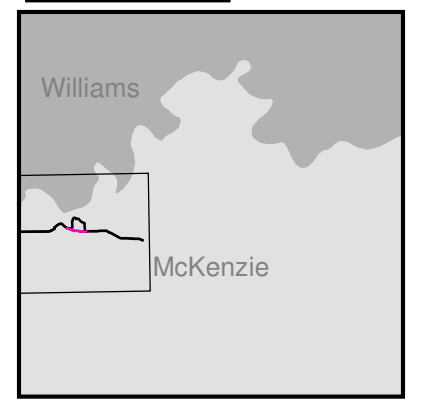
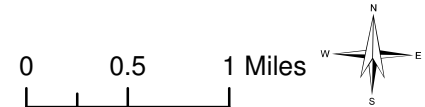


Approved Corridor (Unchanged)

Approved Corridor (to be re-routed)

Approved Corridor (Unchanged)

Requested Corridor Re-route



Hiland Operating, LLC
205 West Maple, Suite 1100
Enid, Oklahoma 73701
580-616-2080