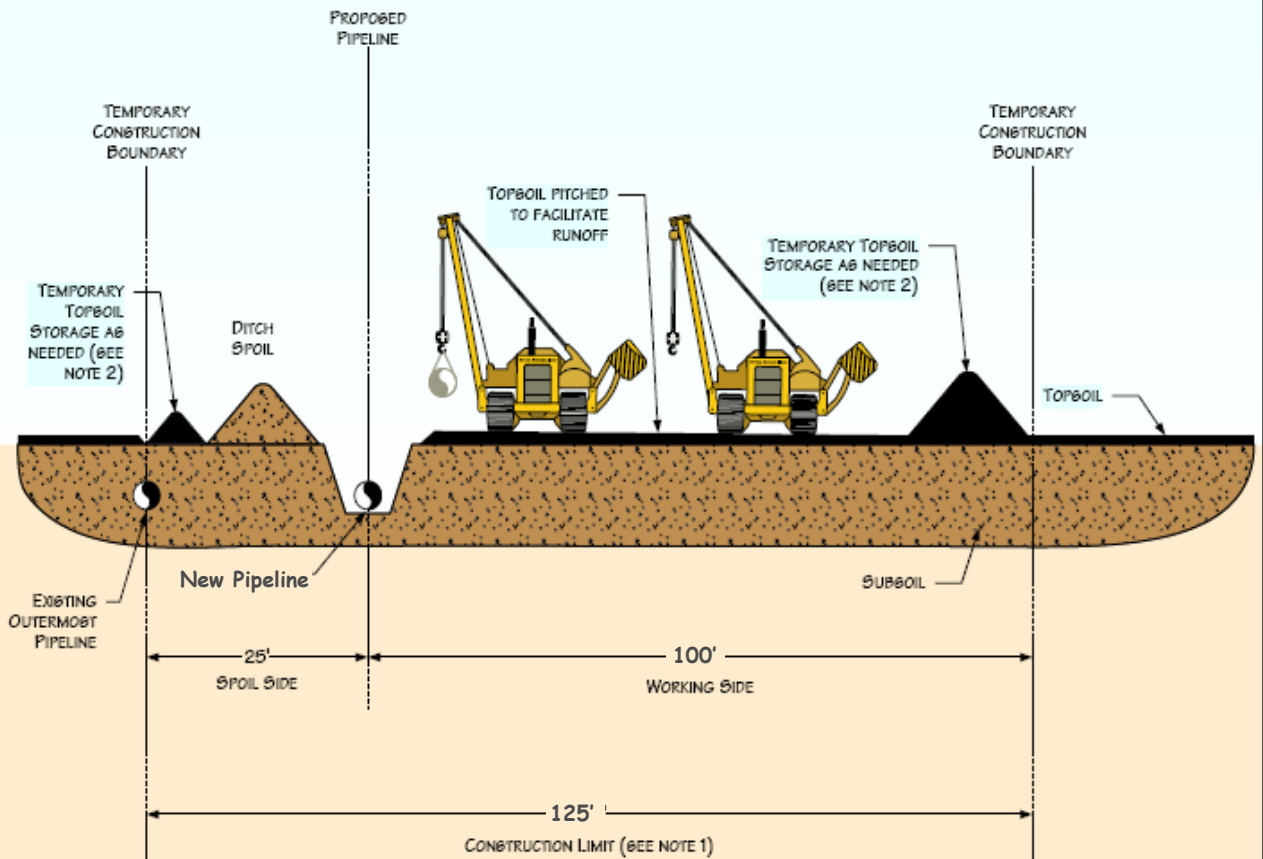


TAB 6 – Environmental Mitigation Plan Exhibits

- Figure 6.1.1 Typical Construction Layout
- Figure 6.1.2 Typical Topsoil Segregation – Ditch Plus Spoil Side
- Figure 6.1.3 Typical Topsoil Segregation – Full Right-of-Way
- Figure 6.1.4 Typical Topsoil Segregation – Trench Line Only
- Figure 6.1.5 Typical Temporary or Permanent Berms – Perspective View
- Figure 6.1.6 Typical Temporary or Permanent Berms – Elevation View
- Figure 6.1.7 Typical Silt Fence Installation
- Figure 6.1.8 Typical Straw Bale installation
- Figure 6.1.9 Typical Trench Breakers – Perspective View
- Figure 6.1.10 Typical Trench Breakers – Plan and Profile Views
- Figure 6.2.1 Typical Paved Road Crossing – Sediment Control
- Figure 6.3.1 Typical Dewatering Measures
- Figure 6.3.2 Typical Straw Bale Dewatering Structure
- Figure 6.5.1 Permanent Slope Breakers – Perspective View
- Figure 6.5.2 Erosion Control Blanket - Steep Slopes ($\geq 30\%$)



PROFILE

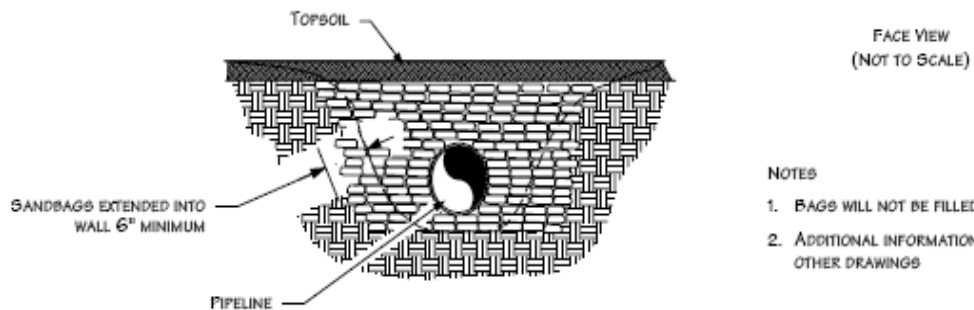
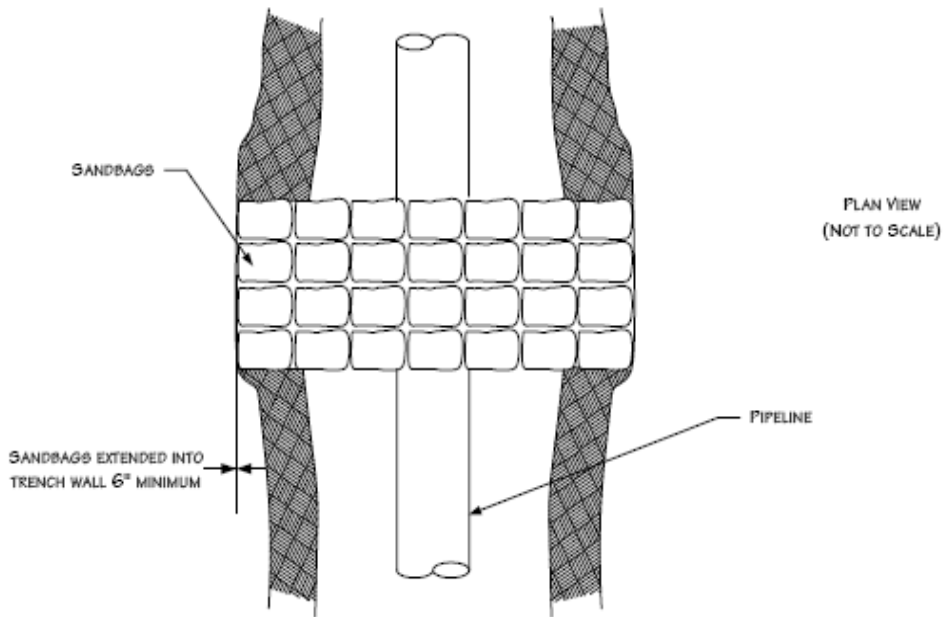
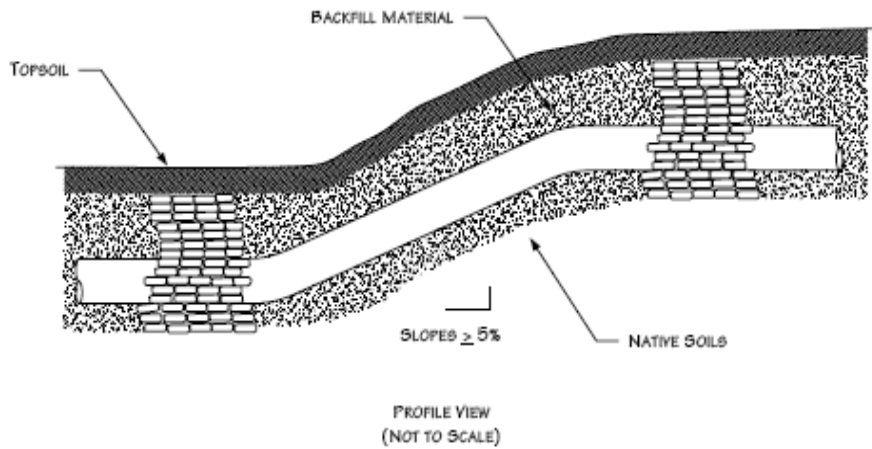
NOTES:

1. CONSTRUCTION LIMITS WILL TYPICALLY BE 125' WIDE. SPOIL SIDE WILL BE APPROXIMATELY 25' WIDE.
2. THIS DRAWING REFLECTS "DITCH PLUS SPOIL" SIDE TOPSOIL STRIPPING PROCEDURE. STOCKPILE TOPSOIL SEPARATELY FROM DITCH SPOIL SHOWN OR IN OTHER CONFIGURATION APPROVED BY COMPANY.
3. THE OFFSET FROM OUTERMOST EXISTING PIPELINE WILL BE 25' FOR MOST LOCATIONS BUT MAY BE INCREASED OR DECREASED DEPENDING ON THE SITE SPECIFIC CONSTRUCTION REQUIREMENTS.



Hiland Operating, LLC
 205 West Maple, Ste 1100
 Enid, Oklahoma 73701
 508-242-6040

Figure 6.1.1 – Typical Construction Layout
 8-inch Natural Gas Pipeline
 October 2010



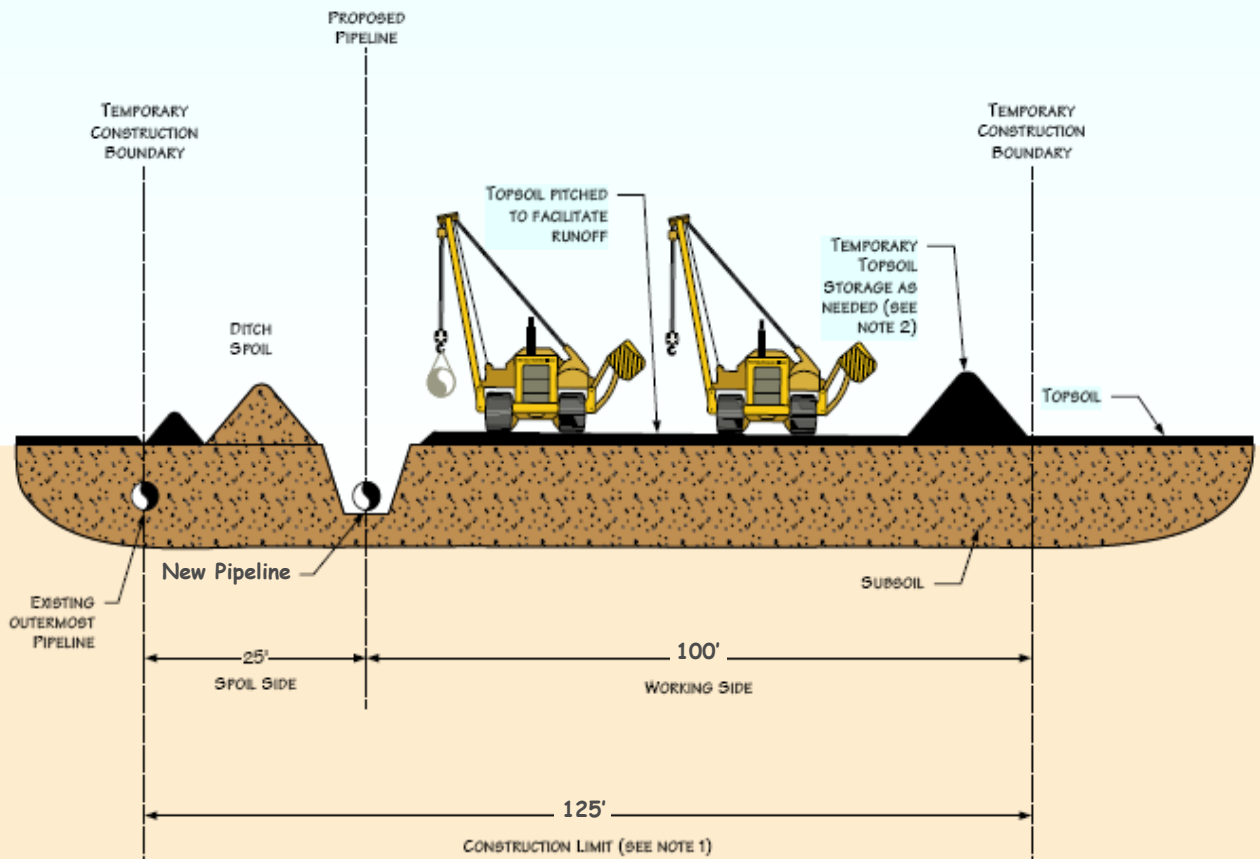
NOTES

1. BAGS WILL NOT BE FILLED WITH TOPSOIL
2. ADDITIONAL INFORMATION INCLUDED ON OTHER DRAWINGS



Hiland Operating, LLC
 205 West Maple, Ste 1100
 Enid, Oklahoma 73701
 508-242-6040

Figure 6.1.10 – Typical Trench Breaker
 Plan and Profile View
 8-inch Natural Gas Pipeline
 October 2010



PROFILE

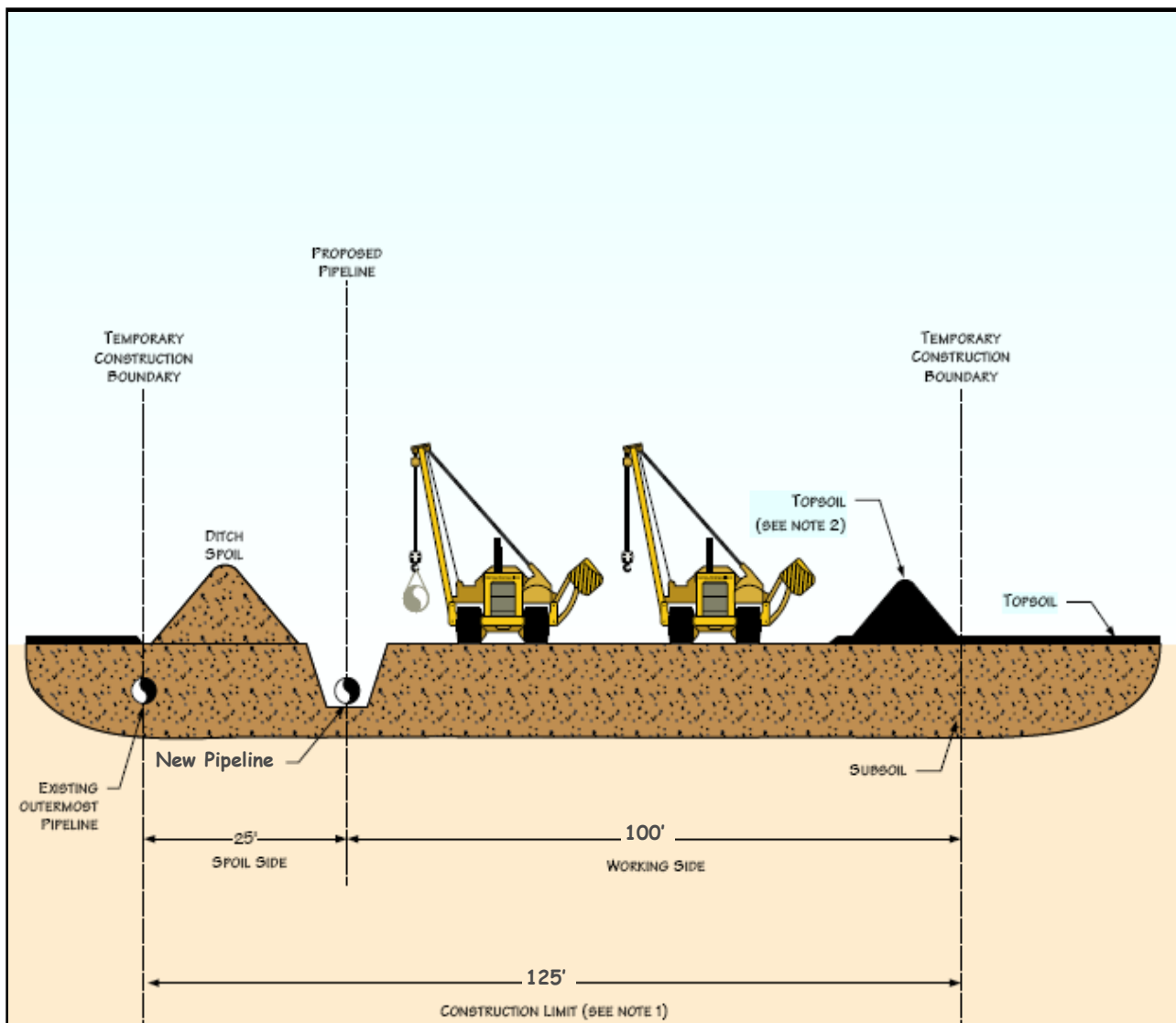
NOTES:

1. CONSTRUCTION LIMITS WILL TYPICALLY BE 125' WIDE. SPOIL SIDE WILL BE APPROXIMATELY 25' WIDE.
2. THIS DRAWING REFLECTS "DITCH PLUS SPOIL" SIDE TOPSOIL STRIPPING PROCEDURE. STOCKPILE TOPSOIL SEPARATELY FROM DITCH SPOIL SHOWN OR IN OTHER CONFIGURATION APPROVED BY COMPANY.
3. THE OFFSET FROM OUTERMOST EXISTING PIPELINE WILL BE 25' FOR MOST LOCATIONS BUT MAY BE INCREASED OR DECREASED DEPENDING ON THE SITE SPECIFIC CONSTRUCTION REQUIREMENTS.



Hiland Operating, LLC
 205 West Maple, Ste 1100
 Enid, Oklahoma 73701
 508-242-6040

Figure 6.1.2 – Typical Topsoil Segregation
 Ditch Plus Spoil Side
 8-inch Natural Gas Pipeline
 October 2010



PROFILE

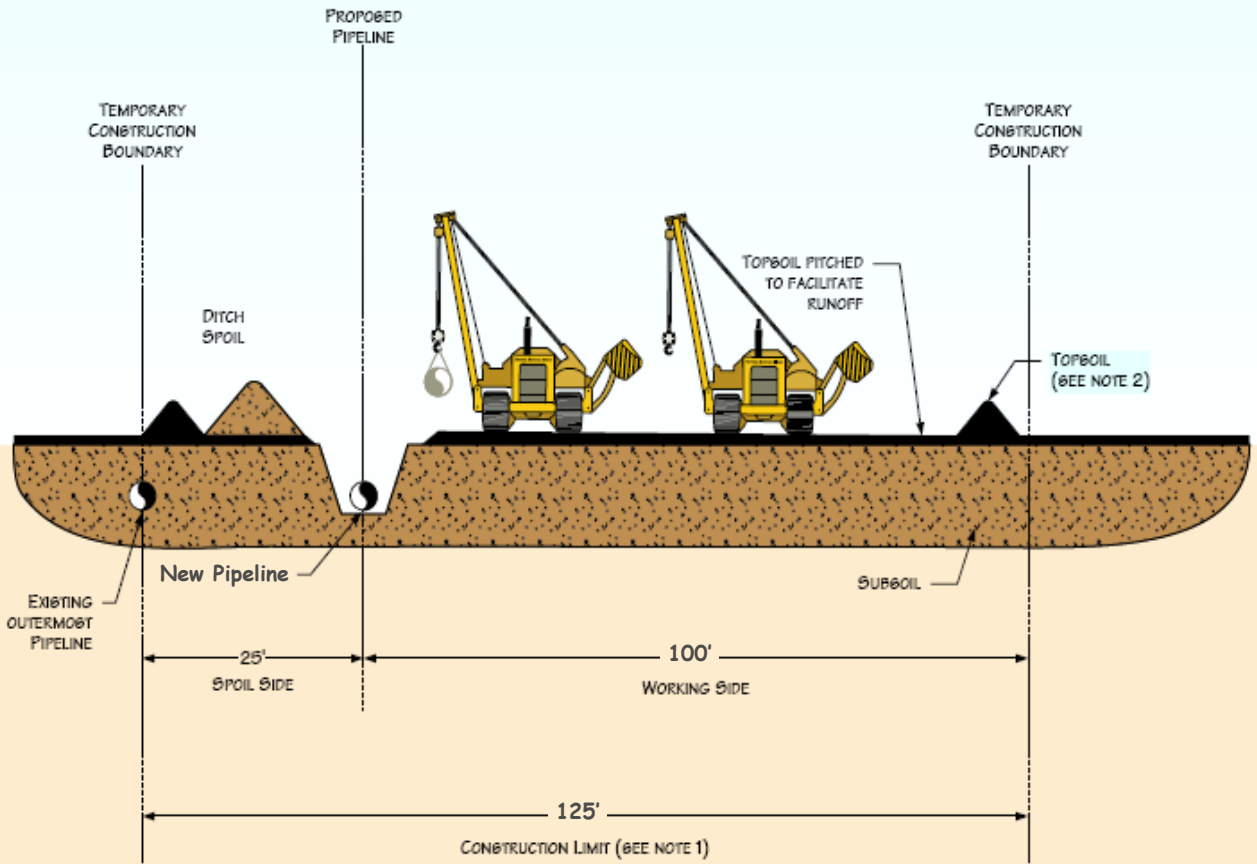
NOTES:

1. CONSTRUCTION LIMITS WILL TYPICALLY BE 125' WIDE. SPOIL SIDE WILL BE APPROXIMATELY 25' WIDE.
2. THIS DRAWING REFLECTS "FULL RIGHT OF WAY" TOPSOIL STRIPPING PROCEDURE. STOCKPILE TOPSOIL SEPARATELY FROM DITCH SPOIL SHOWN OR IN OTHER CONFIGURATION APPROVED BY COMPANY.
3. THE OFFSET FROM OUTERMOST EXISTING PIPELINE WILL BE 25' FOR MOST LOCATIONS BUT MAY BE INCREASED OR DECREASED DEPENDING ON THE SITE SPECIFIC CONSTRUCTION REQUIREMENTS.



Hiland Operating, LLC
 205 West Maple, Ste 1100
 Enid, Oklahoma 73701
 508-242-6040

Figure 6.1.3 – Typical Topsoil Segregation
 Full Right-of-Way
 8-inch Natural Gas Pipeline
 October 2010



PROFILE

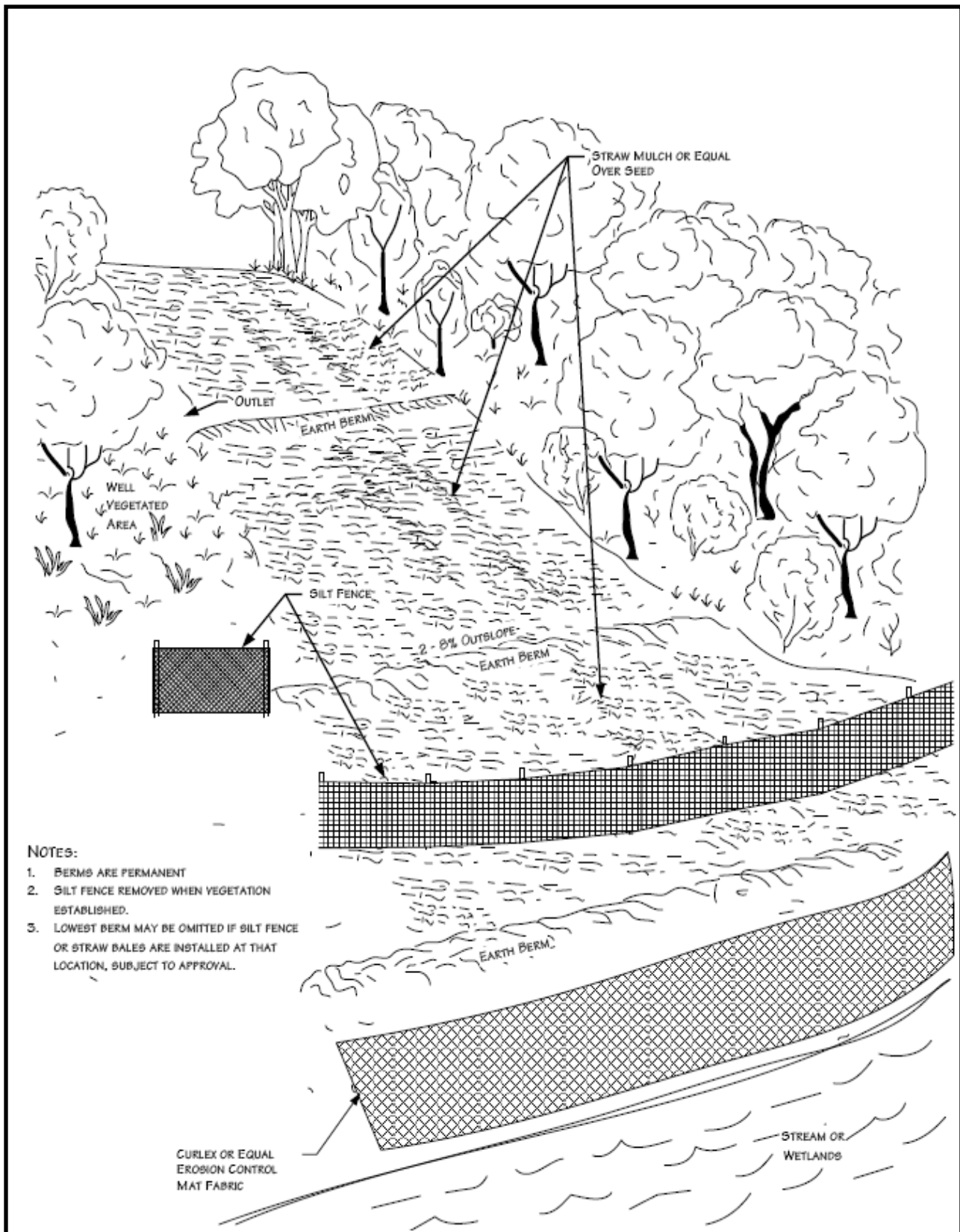
NOTES:

1. CONSTRUCTION LIMITS WILL TYPICALLY BE 125' WIDE. SPOIL SIDE WILL BE APPROXIMATELY 25' WIDE.
2. THIS DRAWING REFLECTS "TRENCH LINE ONLY" TOPSOIL STRIPPING PROCEDURE. STOCKPILE TOPSOIL SEPARATELY FROM DITCH SPOIL SHOWN OR IN OTHER CONFIGURATION APPROVED BY COMPANY.
3. THE OFFSET FROM OUTERMOST EXISTING PIPELINE WILL BE 25' FOR MOST LOCATIONS BUT MAY BE INCREASED OR DECREASED DEPENDING ON THE SITE SPECIFIC CONSTRUCTION REQUIREMENTS.



Hiland Operating, LLC
 205 West Maple, Ste 1100
 Enid, Oklahoma 73701
 508-242-6040

Figure 6.1.4 – Typical Topsoil Segregation
 Trench Line Only
 8-inch Natural Gas Pipeline
 October 2010



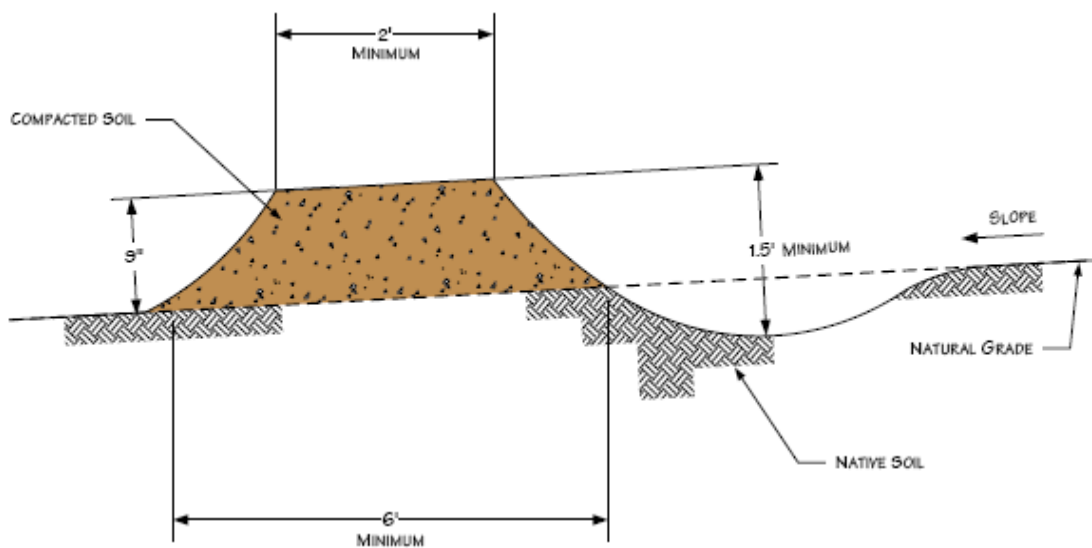
NOTES:

1. BERMS ARE PERMANENT
2. SILT FENCE REMOVED WHEN VEGETATION ESTABLISHED.
3. LOWEST BERM MAY BE OMITTED IF SILT FENCE OR STRAW BALES ARE INSTALLED AT THAT LOCATION, SUBJECT TO APPROVAL.



Hiland Operating, LLC
 205 West Maple, Ste 1100
 Enid, Oklahoma 73701
 508-242-6040

Figure 6.1.5 – Typical Temporary or Permanent Berms-Perspective View
 8-inch Natural Gas Pipeline
 October 2010



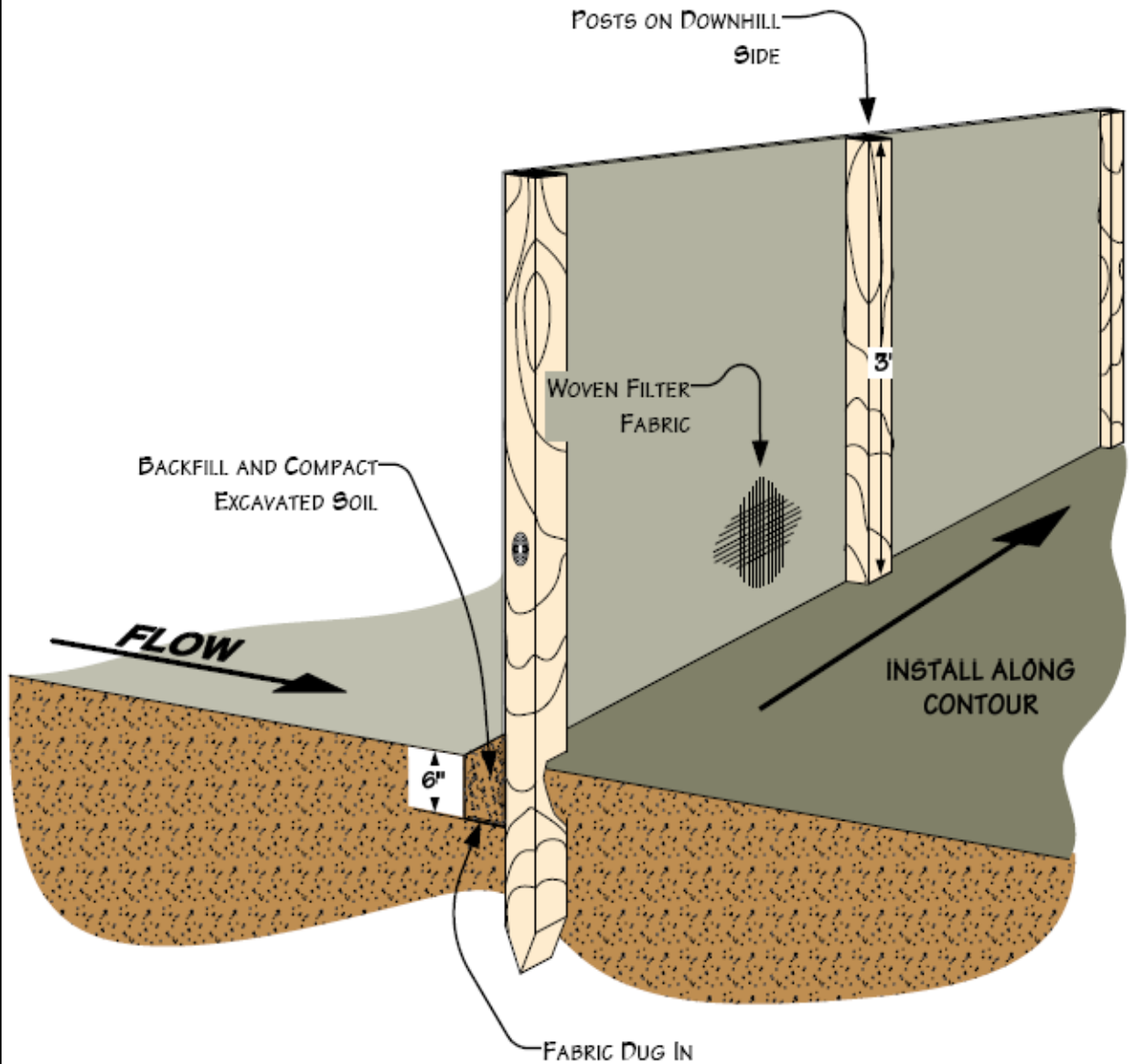
NOTES

1. BERMS SHALL BE CONSTRUCTED WITH 2 TO 3 PERCENT OUTSLOPE.
2. BERMS SHALL BE OUTLETED TO WELL VEGETATED STABLE AREAS, SILT FENCES, STRAW/HAY BALES OR ROCK APRONS.
3. BERMS SHALL BE SPACED AS DESCRIBED IN CONSTRUCTION SPECIFICATIONS.
4. ADDITIONAL INFORMATION INCLUDED ON OTHER DRAWINGS.



Hiland Operating, LLC
 205 West Maple, Ste 1100
 Enid, Oklahoma 73701
 508-242-6040

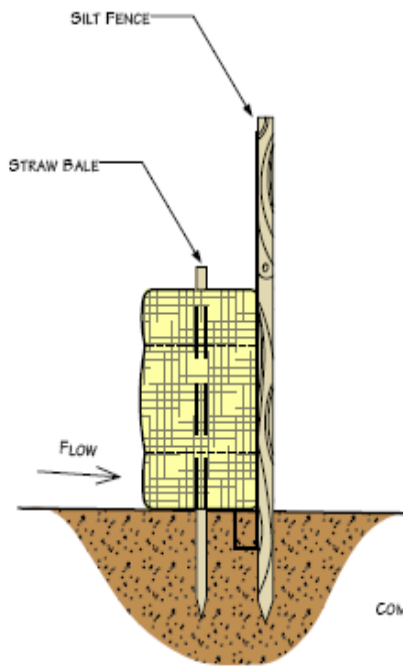
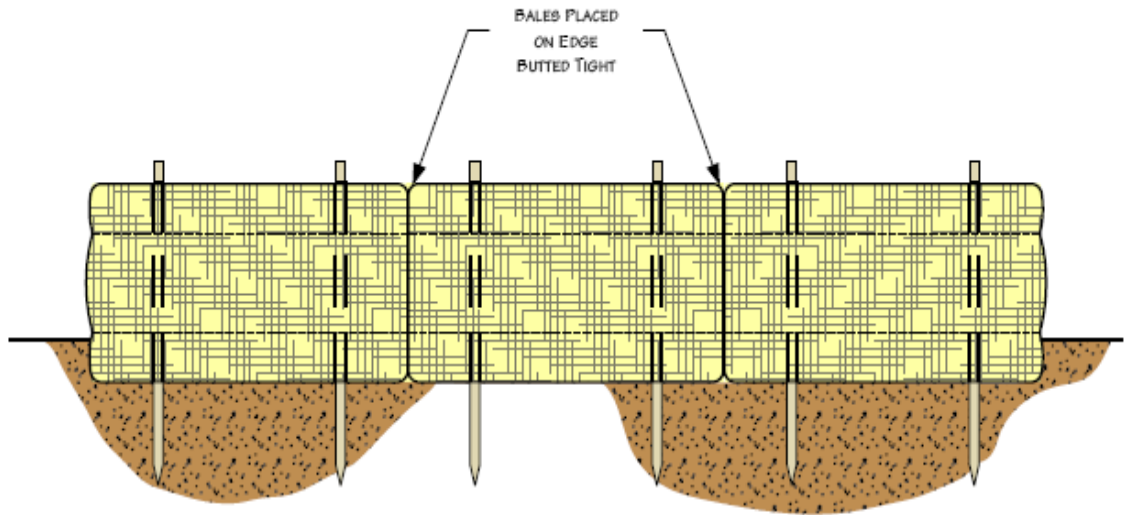
Figure 6.1.6 – Typical Temporary or Permanent Berm-Elevation View
 8-inch Natural Gas Pipeline
 October 2010



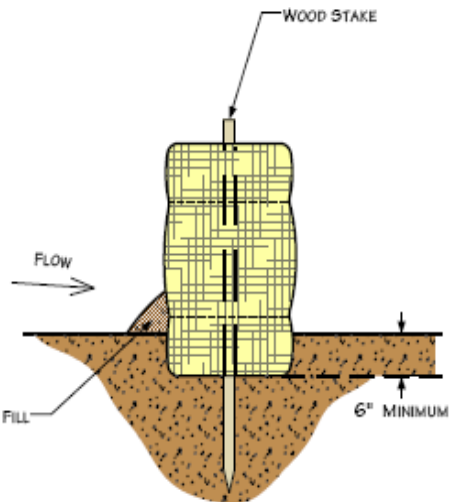
Hiland Operating, LLC
 205 West Maple, Ste 1100
 Enid, Oklahoma 73701
 508-242-6040

Figure 6.1.7 – Typical Silt Fence Installation

8-inch Natural Gas Pipeline
 October 2010



STRAW/HAY BALES & SILT FENCE



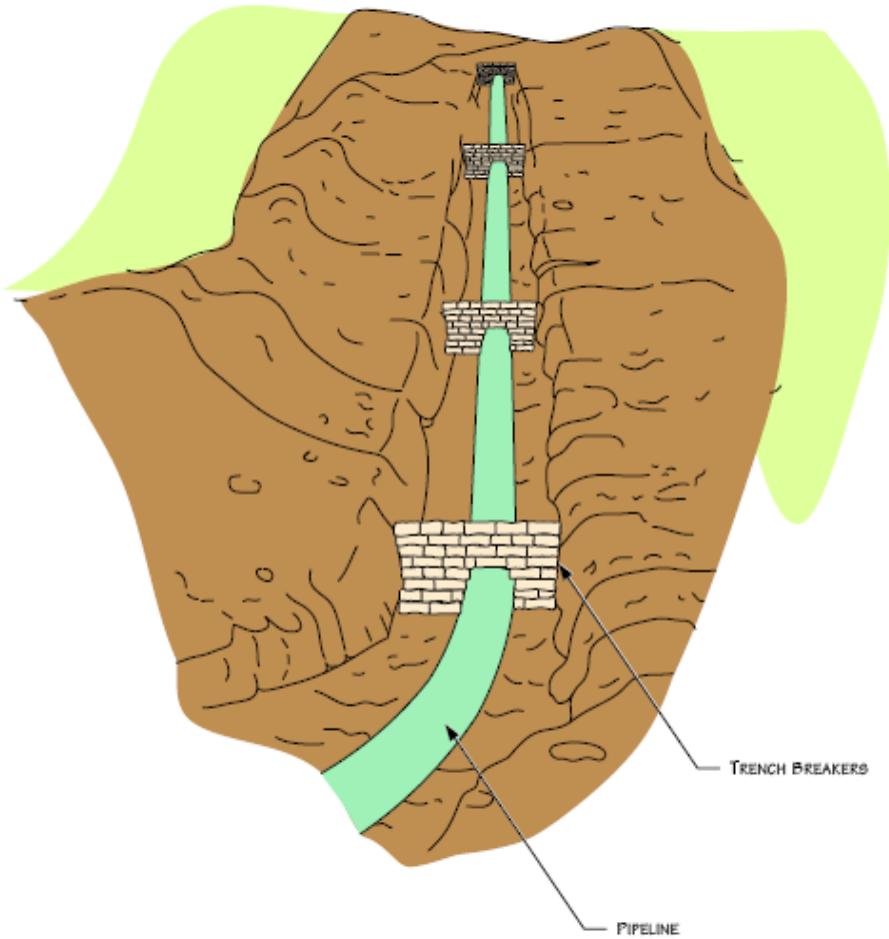
STRAW/HAY BALES ONLY



Hiland Operating, LLC
 105 West Maple, Ste 1100
 Enid, Oklahoma 73701
 508-242-6040

Figure 6.1.8– Typical Straw Bale Installation

8-inch Natural Gas Pipeline
 October 2010



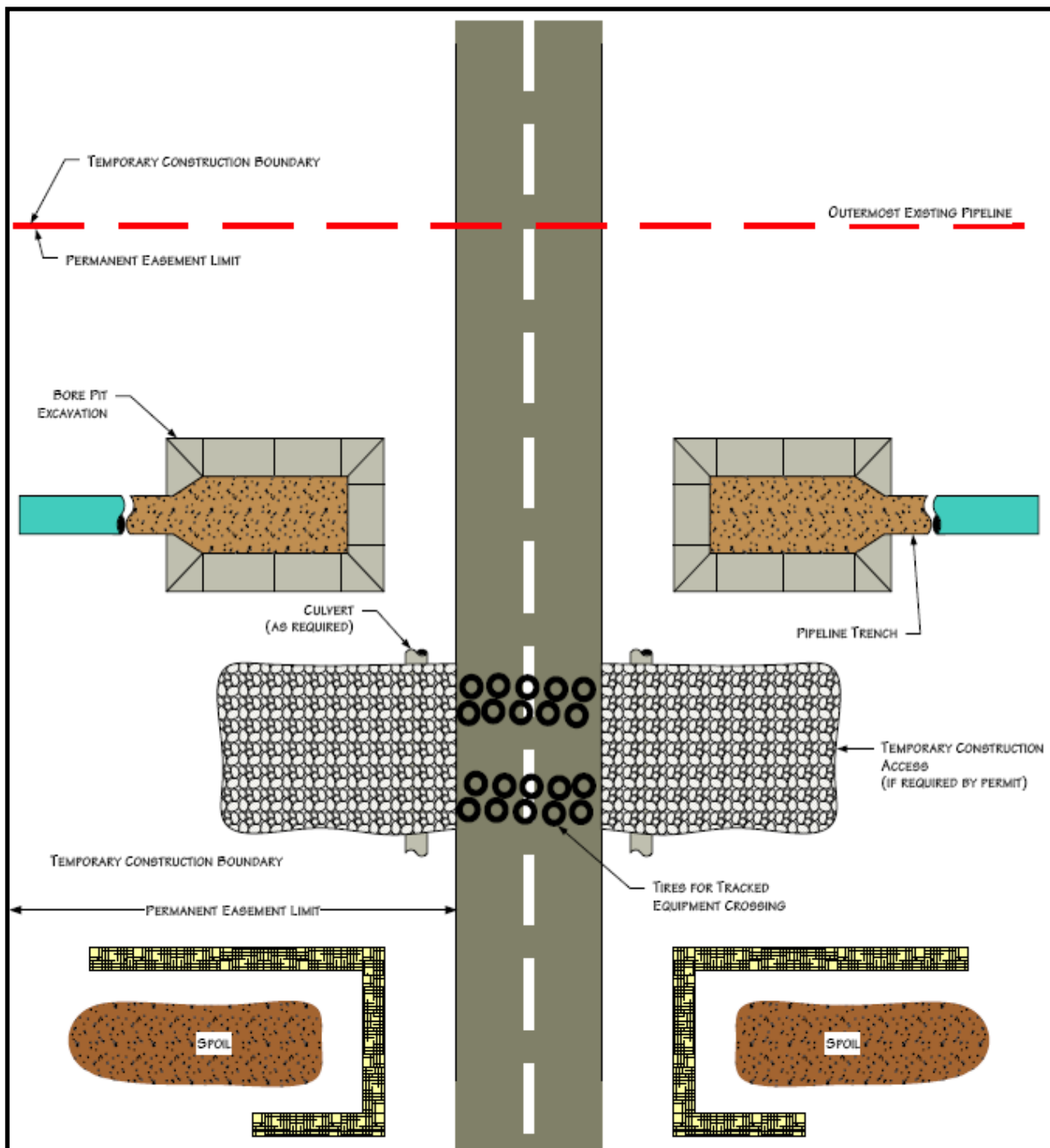
NOTES

1. BAGS WILL NOT BE FILLED WITH TOPSOIL.
2. ADDITIONAL INFORMATION INCLUDED ON OTHER DRAWINGS.



Hiland Operating, LLC
 205 West Maple, Ste 1100
 Enid, Oklahoma 73701
 508-242-6040

Figure 6.1.9 – Typical Trench Breaker
 Perspective View
 8-inch Natural Gas Pipeline
 October 2010



PLAN VIEW

NOTES

1. PROCEDURES SHOWN IN THIS DRAWING APPLY TO IMPROVED ROADS.
2. ROADS MUST BE CLEANED AFTER EQUIPMENT CROSSES AND DIRT PLACED IN SPOIL CONTAINMENT AREAS.
3. TEMPORARY ACCESS MATERIALS MUST BE REMOVED UPON PROJECT COMPLETION.
4. ADDITIONAL INFORMATION INCLUDED ON OTHER DRAWINGS OR PERMITS.
5. CONSTRUCTION AREAS LOCATED OUTSIDE ROAD ROW.



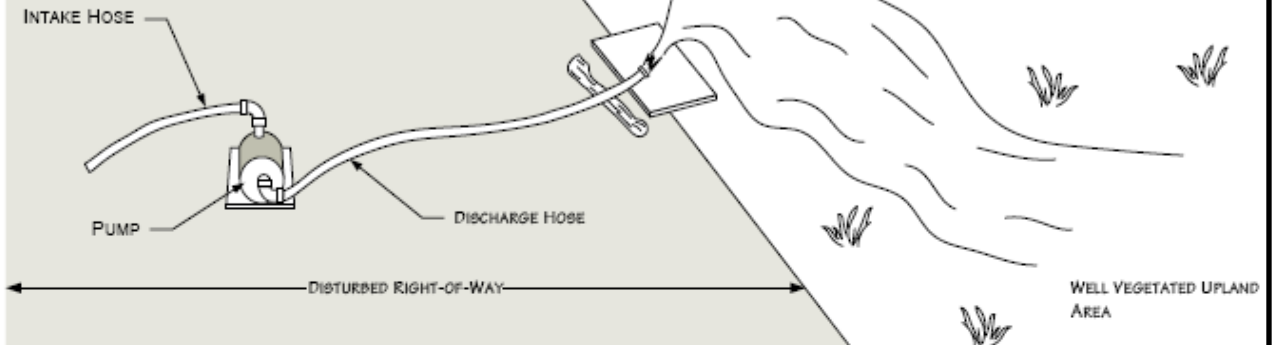
Hiland Operating, LLC
 205 West Maple, Ste 1100
 Enid, Oklahoma 73701
 508-242-6040

Figure 6.2.1—Typical Improved Road Crossing-Directional Bore Method
 8-inch Natural Gas Pipeline
 October 2010

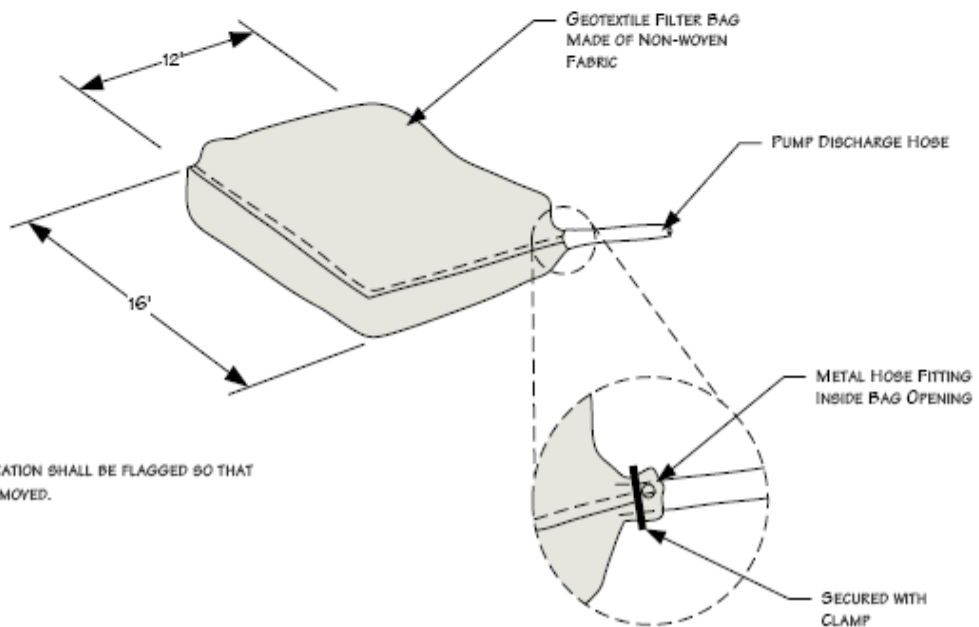
DEWATERING DISCHARGE IN WELL VEGETATED UPLANDS

NOTES:

1. PUMP INTAKE HOSE MUST BE SECURED AT LEAST ONE FOOT ABOVE THE TRENCH BOTTOM.
2. IF VEGETATION IS SPARSE, DEWATER INTO GEOTEXTILE FILTER BAG OR STRAW BALE DEWATERING STRUCTURE.



GEOTEXTILE FILTER BAG



NOTE:

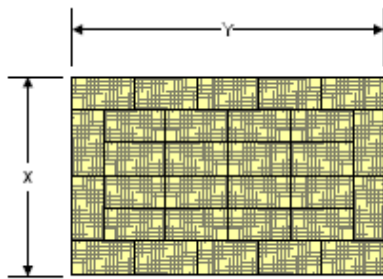
1. FILTER BAG LOCATION SHALL BE FLAGGED SO THAT BAG CAN BE REMOVED.



Hiland Operating, LLC
 205 West Maple, Ste 1100
 Enid, Oklahoma 73701
 508-242-6040

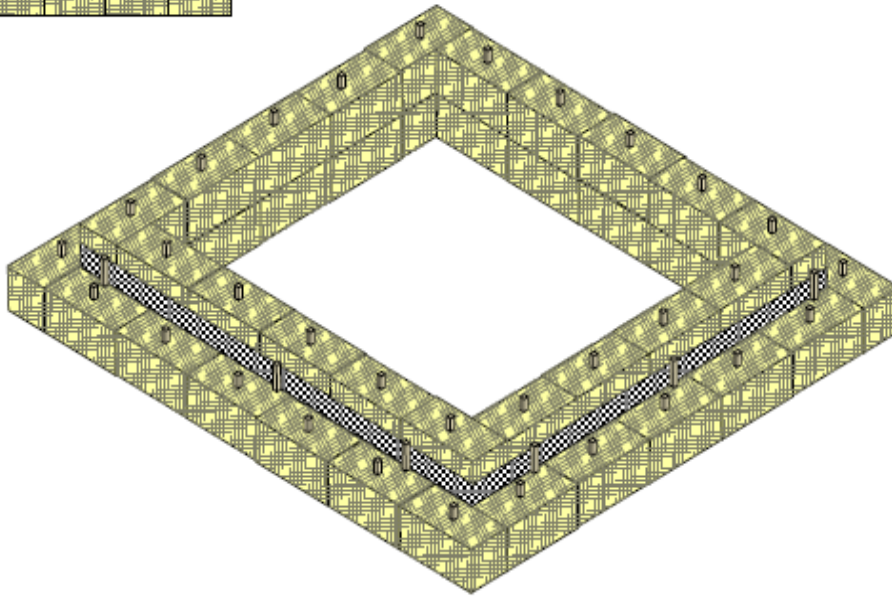
Figure 6.3.1– Typical Dewatering Measures

8-inch Natural Gas Pipeline
 October 2010

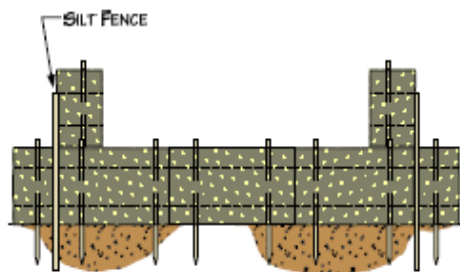


NOTES

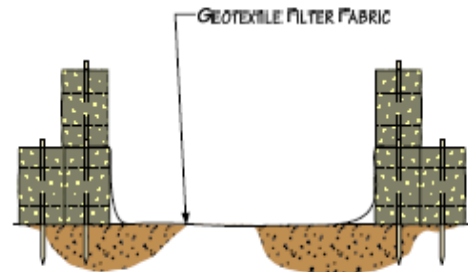
1. ARRANGE THE STRAW BALES TO THE X AND Y DIMENSIONS AS SPECIFIED BELOW.
2. IF BOTTOM OF STRUCTURE IS NOT LINED WITH STRAW BALES (OPTION 1), LINE ENTIRE STRUCTURE WITH GEOTEXTILE FILTER FABRIC.



PERSPECTIVE VIEW



OPTION 1



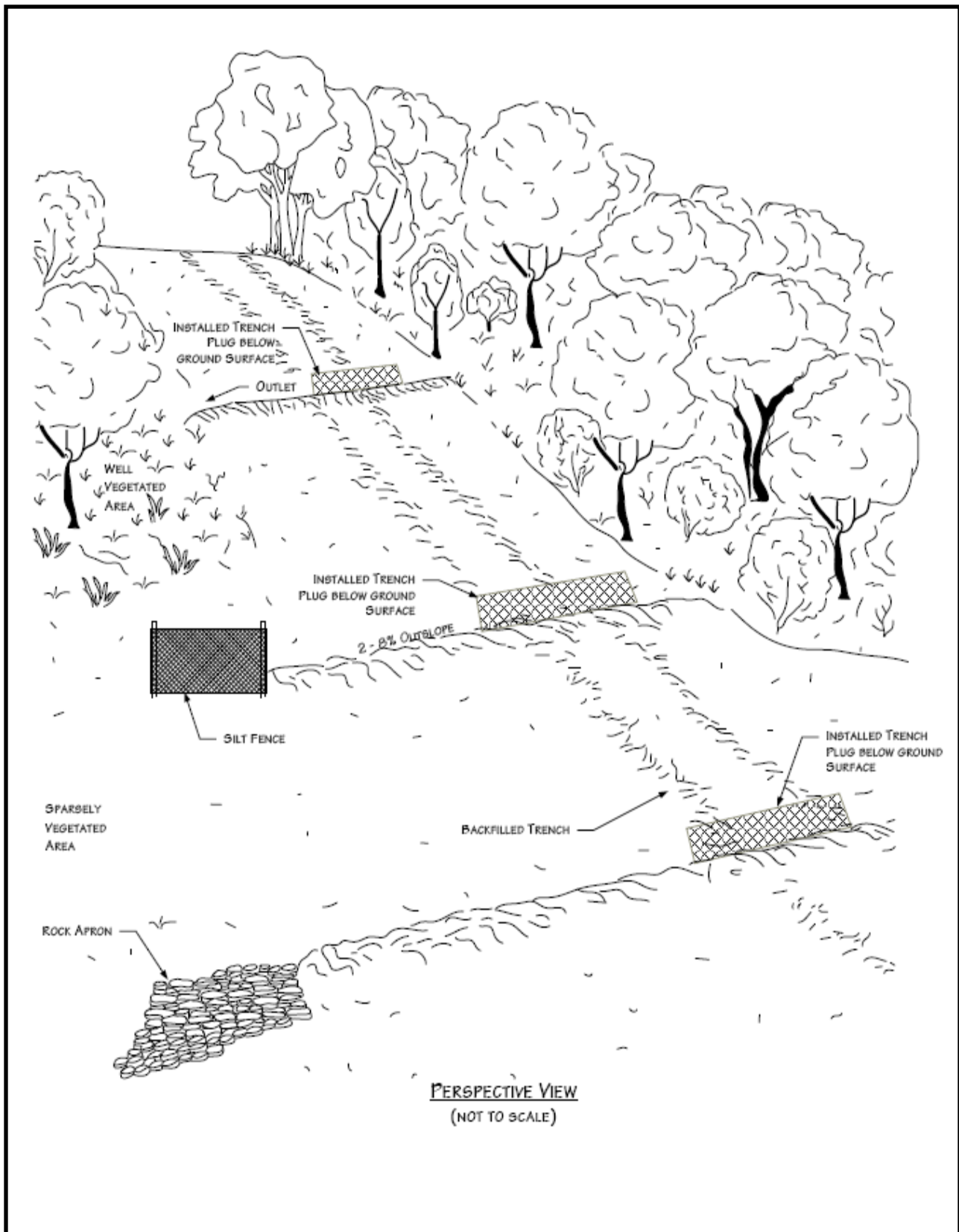
OPTION 2

MINIMUM SUMP DIMENSIONS (FEET)		MAXIMUM PUMPING RATE GALLONS PER MINUTE
X	Y	
10	20	300
15	20	350
20	20	400
20	25	450
25	25	500
25	30	550
30	30	660



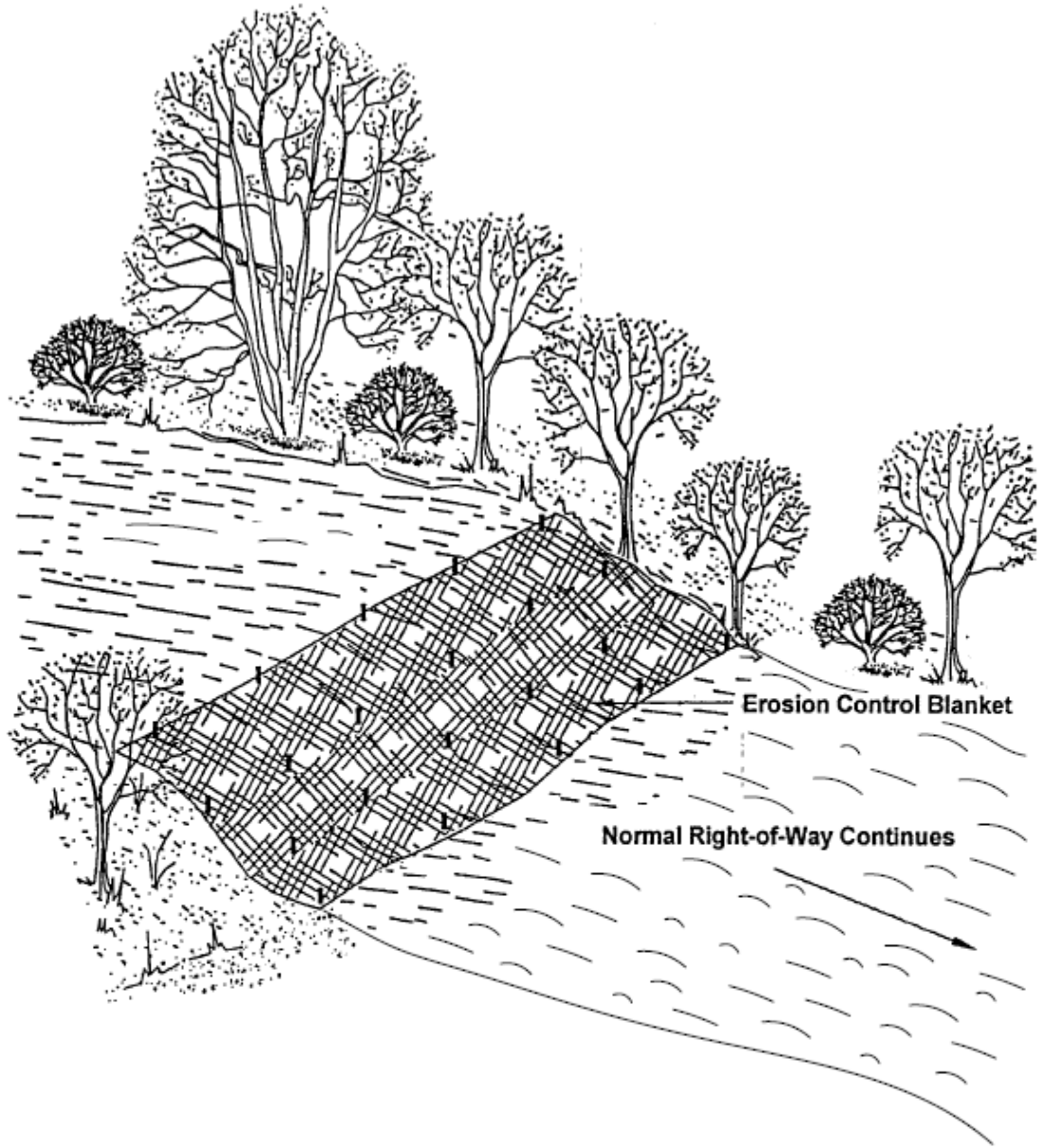
Hiland Operating, LLC
 205 West Maple, Ste 1100
 Enid, Oklahoma 73701
 508-242-6040

Figure 6.3.2 – Typical Straw-Bale Dewatering Structure
 8-inch Natural Gas Pipeline
 October 2010



Hiland Operating, LLC
 205 West Maple, Ste 1100
 Enid, Oklahoma 73701
 508-242-6040

Figure 6.5.1 – Permanent Slope Breakers
 Perspective View
 8-inch Natural Gas Pipeline
 October 2010



NOTES

1. INSTALL EROSION CONTROL BLANKET AS PER MANUFACTURER'S SPECIFICATIONS.
2. ADDITIONAL INFORMATION INCLUDED ON OTHER DRAWINGS.



Hiland Operating, LLC
205 West Maple, Ste 1100
Enid, Oklahoma 73701
508-242-6040

Figure 6.5.2 – Erosion Control Blanket Steep Slopes (>30%)
8-inch Natural Gas Pipeline
October 2010