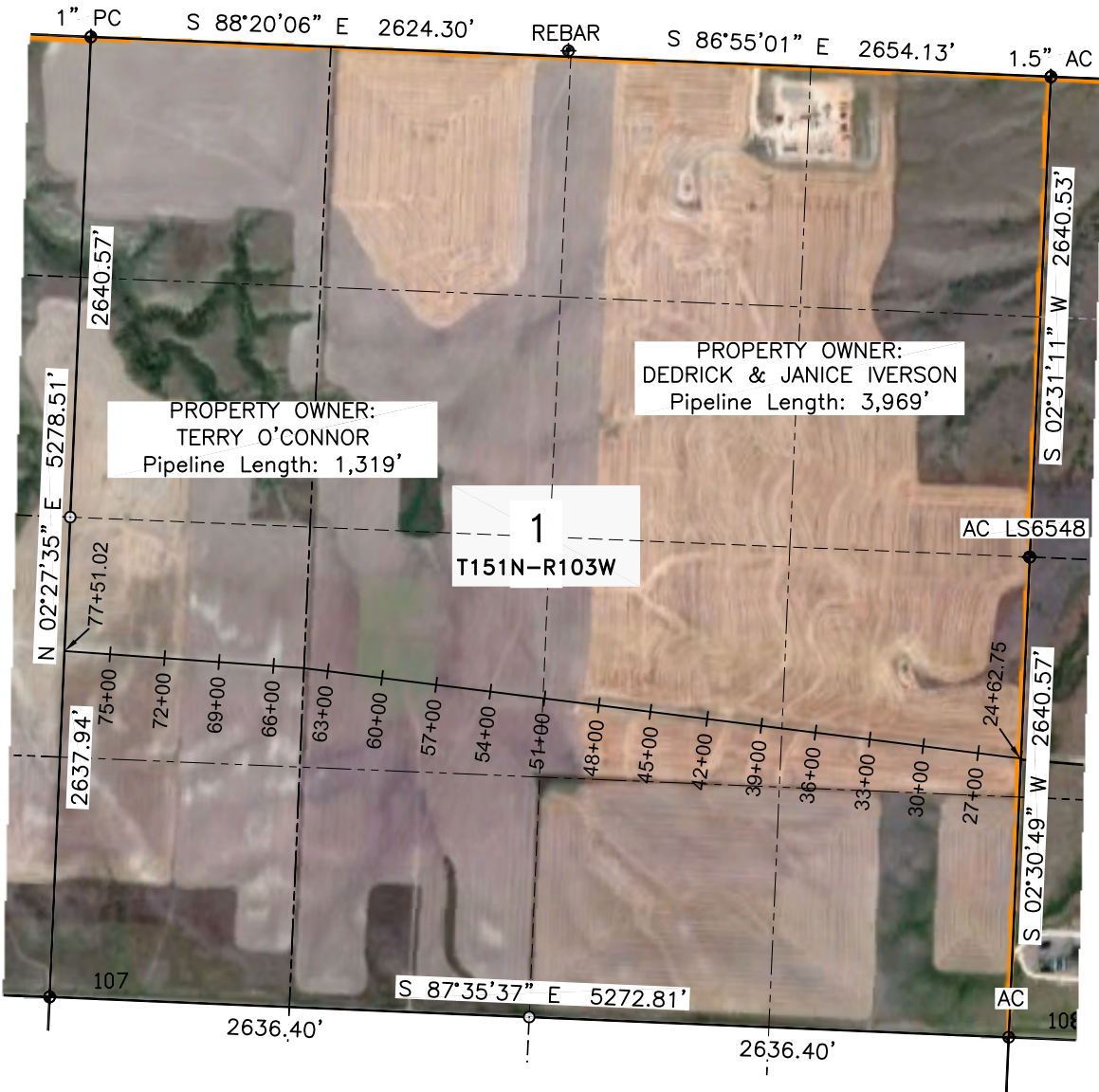


SECTION 1, TOWNSHIP 151
NORTH-RANGE 103 WEST
AS-BUILT STEEL PIPELINE



- PROPERTY BOUNDARY
- - - SECTION LINES
- · · QUARTER LINES
- ⊕ FOUND MONUMENT AS NOTED
- CALCULATED CORNER
- ⊙ BORE LOCATION

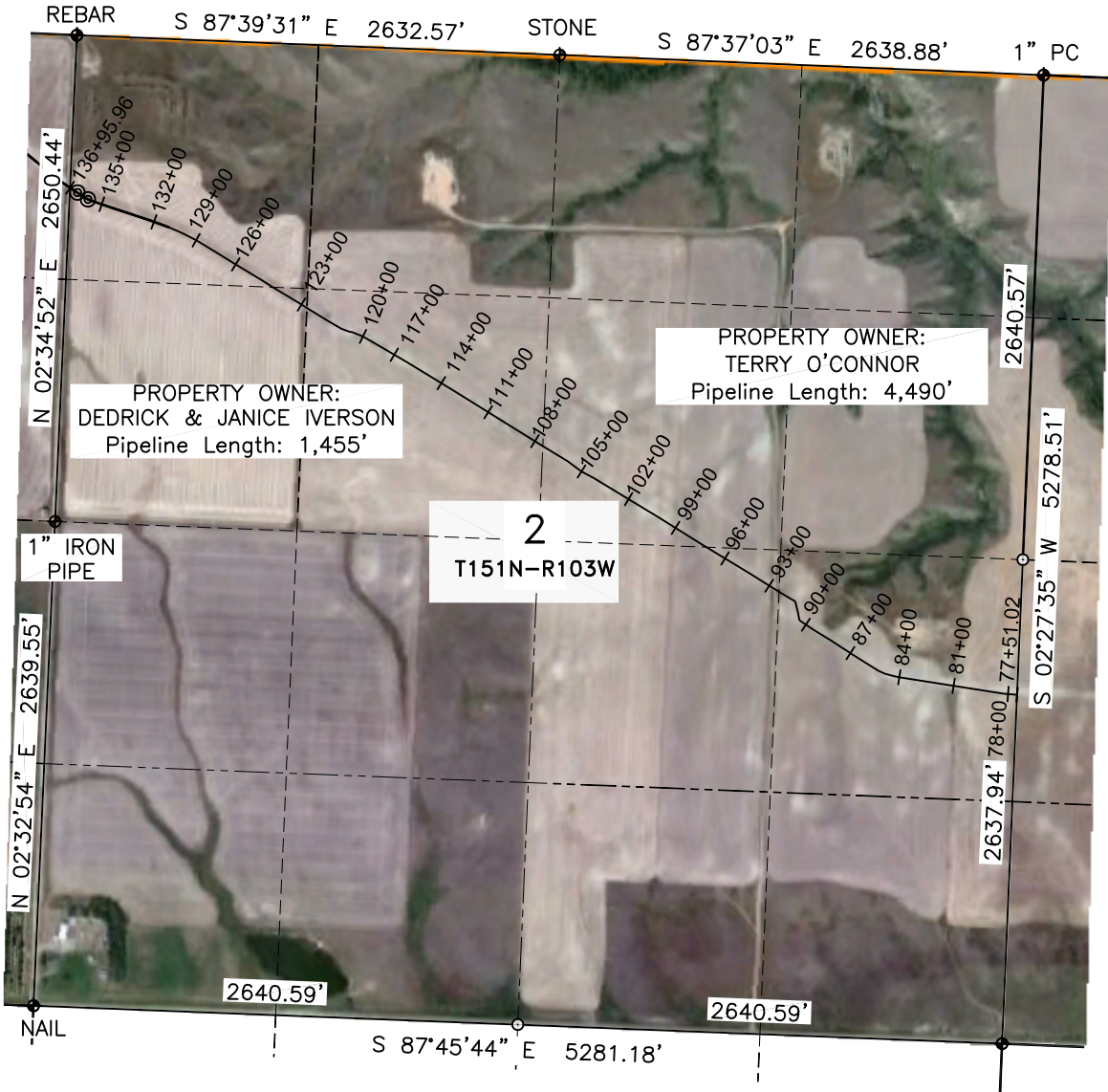
N
N.T.S.

 WESTERN LAND SERVICES Sheridan, WY 82801 (307)673-1817	
DP: L:\Drawings\Hiland Partners\T151-152N_R103W\151-152_103 Master.dwg	Date: 10-19-2011
SM AB-S	Sheet 1 of 1

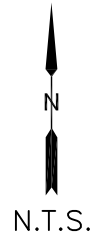
Hiland Partners
P.O. Box 5103
Enid, OK 73702

SECTION 1, T151N-R103W
McKENZIE COUNTY, NORTH DAKOTA

SECTION 2, TOWNSHIP 151
NORTH-RANGE 103 WEST
AS-BUILT STEEL PIPELINE



- PROPERTY BOUNDARY
- SECTION LINES
- - - QUARTER LINES
- ◆ FOUND MONUMENT AS NOTED
- CALCULATED CORNER
- ◎ BORE LOCATION

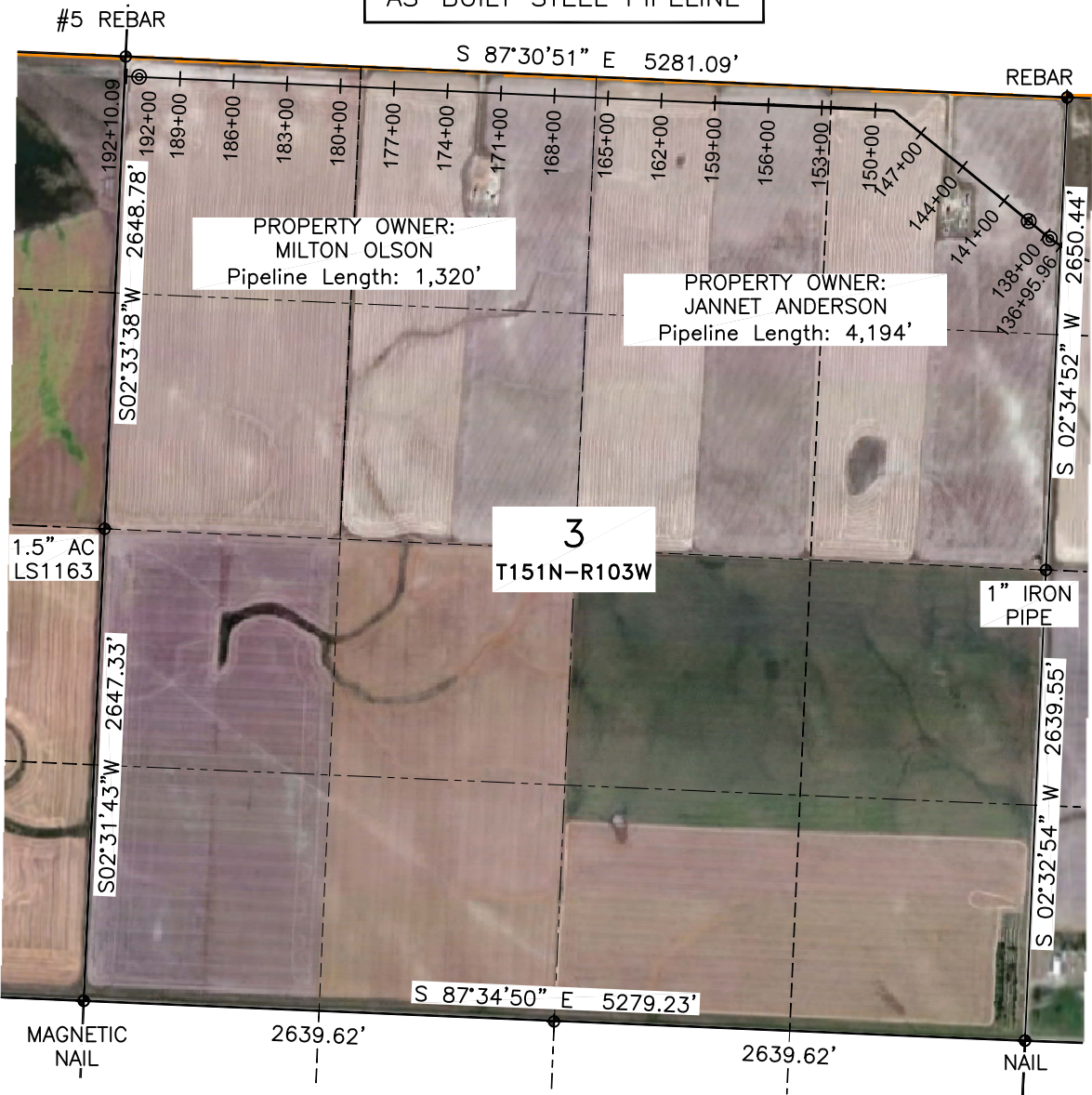


 WESTERN LAND SERVICES Sheridan, WY 82801 (307)673-1817	
DP: L:\Drawings\Hiland Partners\T151-152N_R103W\151-152_103 Master.dwg	Date: 10-20-2011
SM AB-S	Sheet 1 of 1

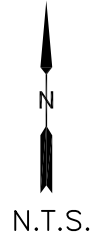
Hiland Partners
P.O. Box 5103
Enid, OK 73702

SECTION 2, T151N-R103W
McKENZIE COUNTY, NORTH DAKOTA

SECTION 3, TOWNSHIP 151
NORTH—RANGE 103 WEST
AS—BUILT STEEL PIPELINE



- PROPERTY BOUNDARY
- SECTION LINES
- - - QUARTER LINES
- ⊕ FOUND MONUMENT AS NOTED
- ⊙ CALCULATED CORNER
- ⊙ BORE LOCATION

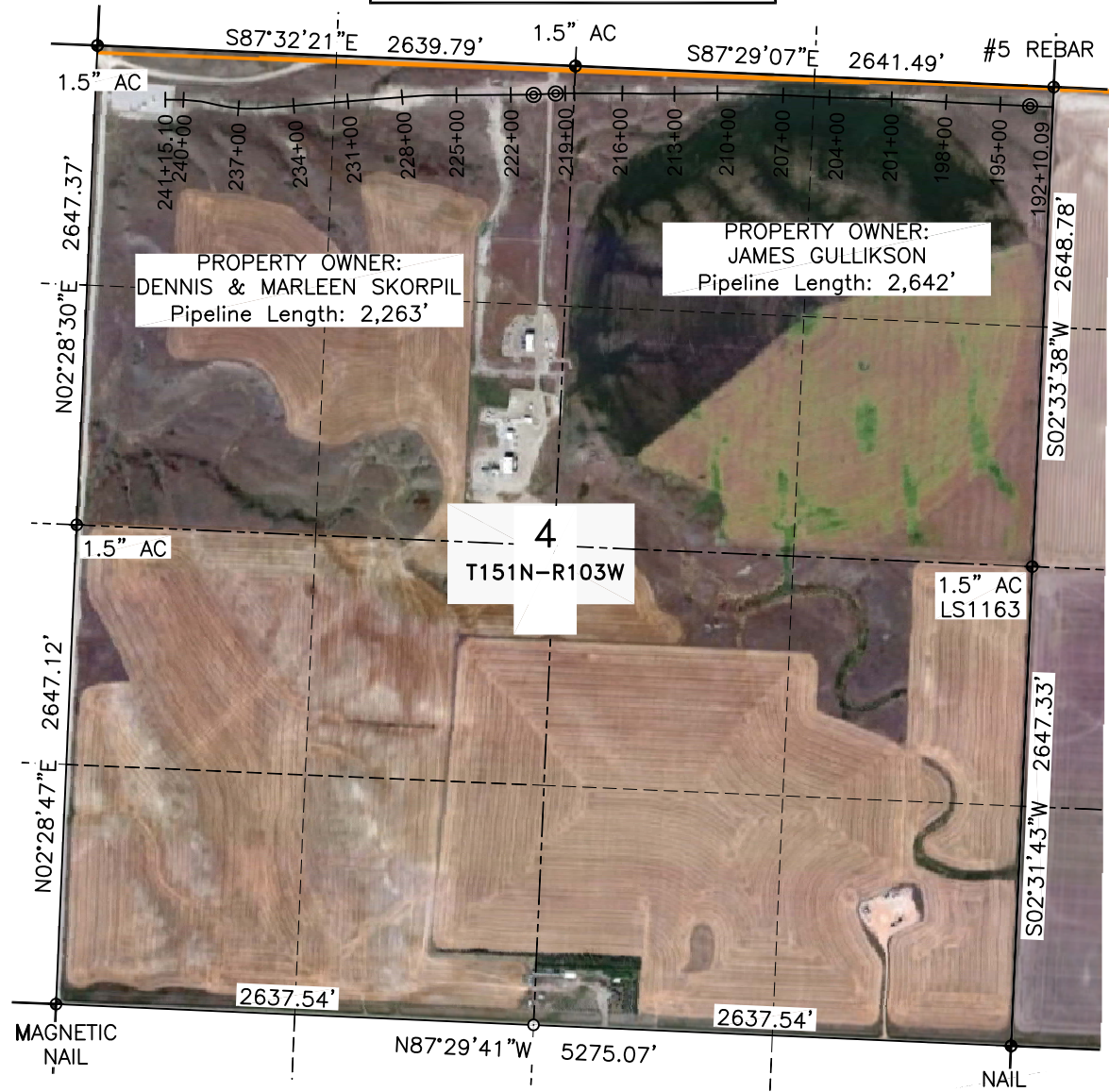


 WESTERN LAND SERVICES Sheridan, WY 82801 (307)673-1817	
DP: L:\Drawings\Hiland Partners\T151-152N_R103W\151-152_103 Master.dwg	Date: 10-20-2011
SM AB-S	Sheet 1 of 1

Hiland Partners
P.O. Box 5103
Enid, OK 73702

SECTION 3, T151N-R103W
McKENZIE COUNTY, NORTH DAKOTA

SECTION 4, TOWNSHIP 151
NORTH-RANGE 103 WEST
AS-BUILT STEEL PIPELINE



- PROPERTY BOUNDARY
- SECTION LINES
- - - QUARTER LINES
- ◆ FOUND MONUMENT AS NOTED
- CALCULATED CORNER
- ◎ BORE LOCATION





WESTERN LAND SERVICES
Sheridan, WY 82801 (307)673-1817

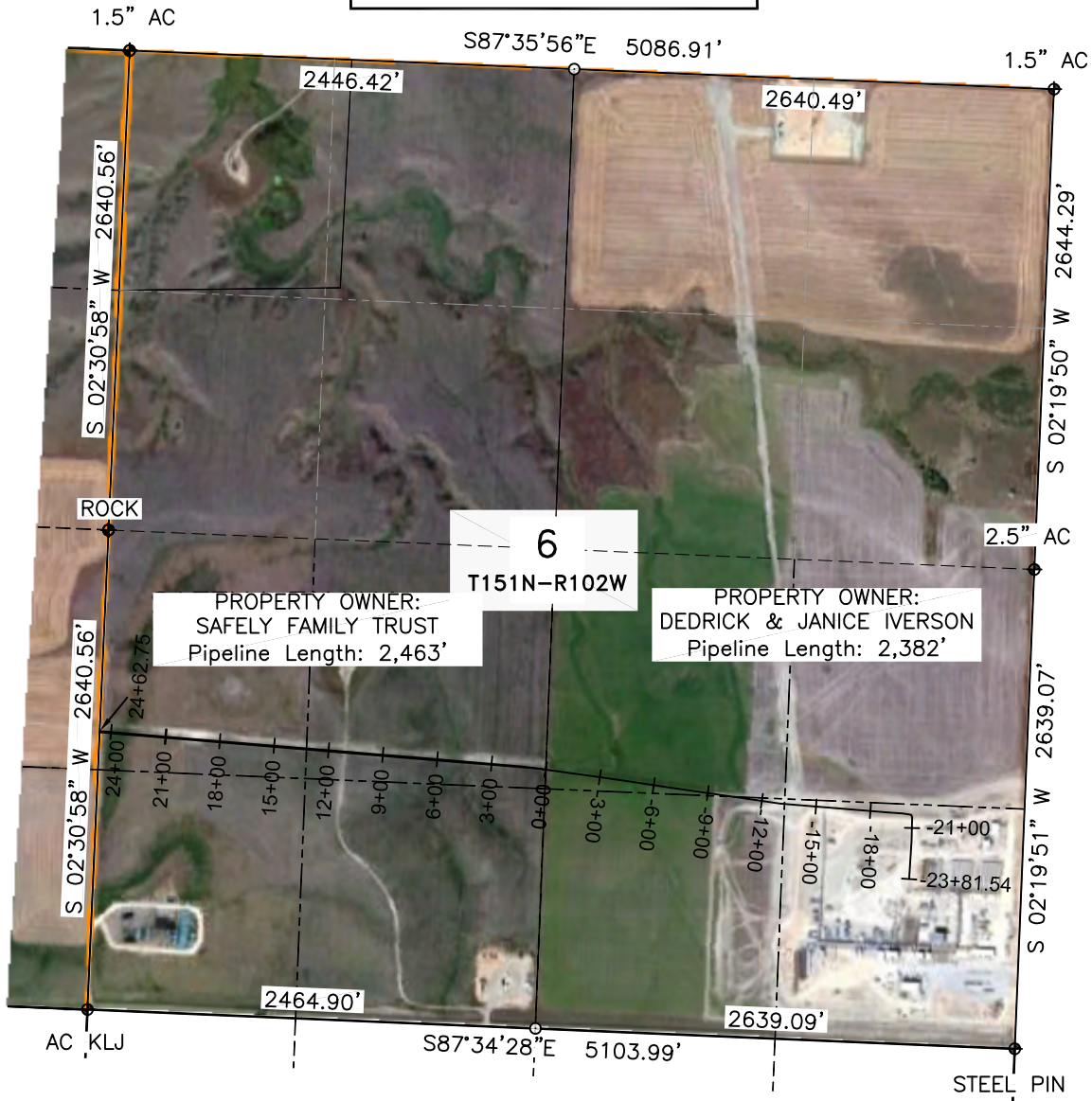
DP: L:\Drawings\Hiland Partners\T151-152N_R103W\151-152_103 Master.dwg Date: 10-20-2011

SM AB-S Sheet 1 of 1

Hiland Partners
P.O. Box 5103
Enid, OK 73702

SECTION 4, T151N-R103W
McKENZIE COUNTY, NORTH DAKOTA

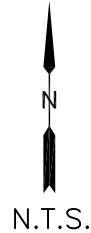
SECTION 6, TOWNSHIP 151
NORTH-RANGE 102 WEST
AS-BUILT STEEL PIPELINE



PROPERTY OWNER:
SAFELY FAMILY TRUST
Pipeline Length: 2,463'

PROPERTY OWNER:
DEDRICK & JANICE IVerson
Pipeline Length: 2,382'

- PROPERTY BOUNDARY
- - - SECTION LINES
- · - · - QUARTER LINES
- ◆ FOUND MONUMENT AS NOTED
- CALCULATED CORNER
- ◎ BORE LOCATION



 WESTERN LAND SERVICES Sheridan, WY 82801 (307)673-1817	
DP: L:\Drawings\Hiland Partners\T151-152N_R103W\151-152_103 Master.dwg	Date: 10-19-2011
SM AB-S	Sheet 1 of 1

Hiland Partners
P.O. Box 5103
Enid, OK 73702

SECTION 6, T151N-R102W
McKENZIE COUNTY, NORTH DAKOTA