

GRAPHIC CONTROLS CORPORATION
BUFFALO, NEW YORK

CHART NO. MC MP-3000
METER
Build Chart

4/15/11
CHART PUT ON
10:00 P M

4/12/11
TAKEN OFF
3:30 P M
LOCATION WATFORD CITY PLANT
REMARKS @ Residue Pipeline
Pat [Signature]

NOON

Hold

Hold

Pipe

Hold

Hold

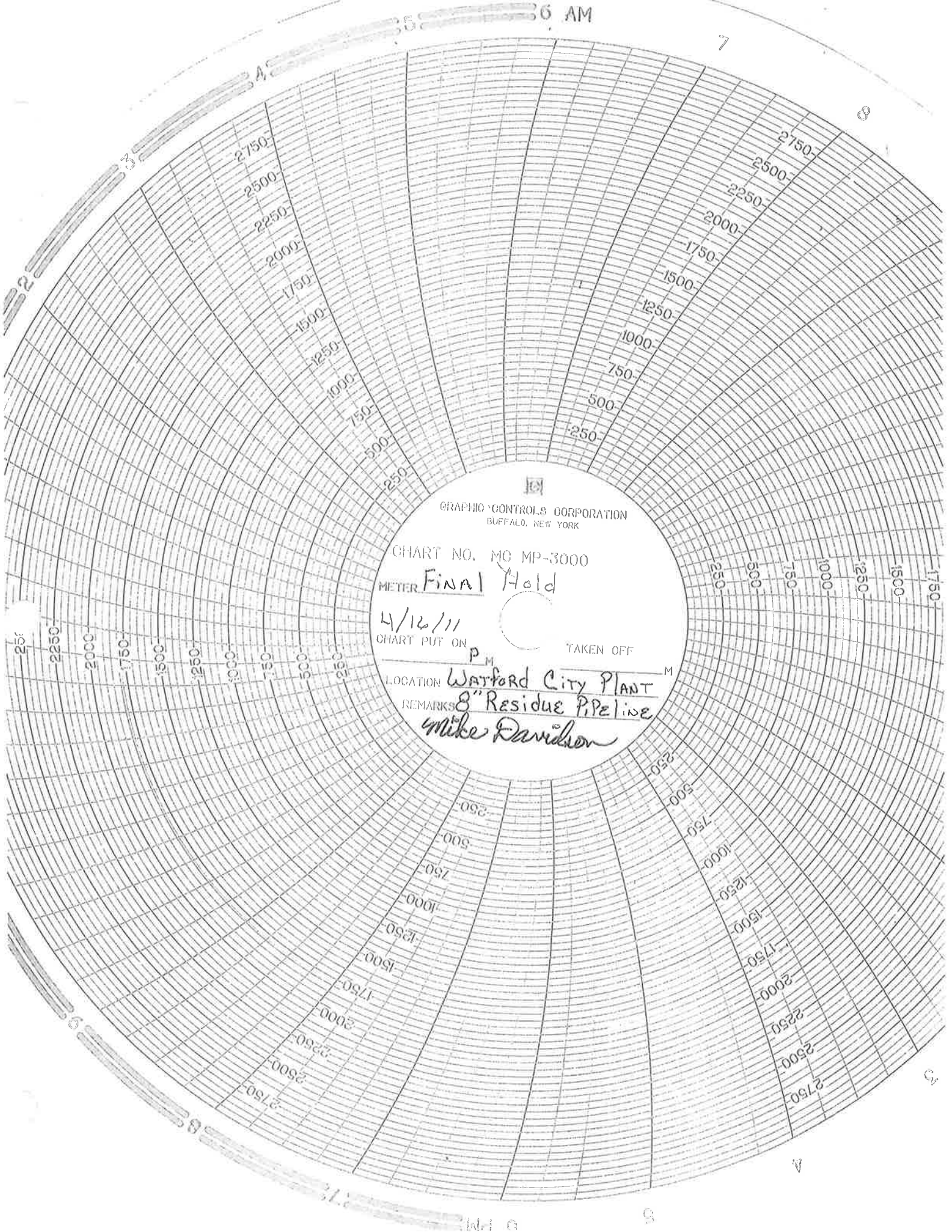
12
11
10
9
8

11
10
9
8

12
11
10
9
8

12
11
10
9
8

36 AM



GRAPHIC CONTROLS CORPORATION
BUFFALO, NEW YORK

CHART NO. MC MP-3000

METER Final Hold

4/16/11

CHART PUT ON

TAKEN OFF

LOCATION Watford City Plant

REMARKS 8" Residue Pipeline

Mike Davidson



J-W Measurement Company

222 N. Cole Creek Road
 P.O. Box 278 Evansville, Wyoming 82636
 (307) 234-1672 Fax (307) 234-0009

Certification of Calibration

Client: JN FIELD SERVICE
 SEC SO#:
 Date of Calibration: 12/28/2010

Instrument Specifications

Make: barton 202a
 Serial #: 2653799
 Differential Range:
 Static Range: 0-3000
 Temperature Range:

AS FOUND TEST			AS LEFT TEST	
Test Value	As Found	% Error As Found	Test Value	As Left
0	-30.0	-6.000	0	0
600	570.0	-6.000	600	600
1200	1170.0	-6.000	1200	1200
1800	1770.0	-6.000	1800	1800
2400	2370.0	-6.000	2400	2400
3000	2970.0	-6.000	3000	3000
2700	2670.0	-6.000	2700	2700
2100	2070.0	-6.000	2100	2100
1500	1470	-6.000	1500	1500
900	870	-6.000	900	900
300	270	-6.000	300	300
0	-30	-6.000	0	0

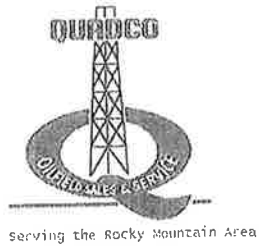
Certified Calibration Equipment

	Differential	Static	Temperature
Equipment:		PERM-CAL	
Range:		0-3000#	
Serial No.:		0202120011-01-001	
Accuracy:		+/- .25%	

Remarks:

Tested By: andy dickerson

Anchorage, AK
 Casper, WY
 Farmington, NM
 Grand Junction, CO



QUADCO INC
 OILFIELD SALES & SERVICE
 Casper WY
 Ph. 307-472-3110
 Fax 307-237-5597

MAIN OFFICE: BRIGHTON - PHONE: (303) 659-3339 - PO BOX 576 - BRIGHTON, CO 80601 - www.quadcoinc.com

CALIBRATION TEST REPORT

Gauge Manufacturer: VAETRIX

Customer: COMPRESSION LEASING

Gauge Model: DIGITAL PRESSURE

Dial Up Capacity (unit): 5000

RO/Order #: 20002088

Serial Number: 17

Date: 3/4/2011

NOMINAL READING	GAUGE READING-UP	GAUGE READING-DOWN
<u>500</u>	<u>496</u>	<u>496</u>
<u>1000</u>	<u>996</u>	<u>996</u>
<u>1500</u>	<u>1496</u>	<u>1496</u>
<u>2000</u>	<u>1996</u>	<u>1996</u>
<u>2500</u>	<u>2496</u>	<u>2496</u>
<u>3000</u>	<u>2996</u>	<u>2996</u>
<u>3500</u>	<u>3496</u>	<u>3496</u>
<u>4000</u>	<u>3996</u>	<u>3996</u>
<u>4500</u>	<u>4497</u>	<u>4497</u>
<u>5000</u>	<u>4997</u>	<u>4997</u>

Remarks

CALIBRATED W/GAUGE S/N: QC310.

THIS INSTRUMENT HAS BEEN CALIBRATED WITH A PRESSURE STANDARD WHOSE ACCURACY IS TRACEABLE TO THE N.I.S.T. TEST NUMBERS.

Calibrated By: GENE CORSON *Gene Corson*

Final Inspection By: THOMAS ANDERSON *Tom Anderson*

Date: 3/4/2011

Watford City Residue Pipe Line Testing Requirements

MAOP	1,650	PSIG	
SMYS	2,640	PSIG	* Maximum pressure pipe can stand
80% SMYS	2,112	PSIG	* Required by CFR 192.503 for Safety Factor When Using Air or Inert Gas for Testing
Maximum Allowable Test Pressure	1,950	PSIG	* Additional Safety Factor Implemented By Hiland Partners
Test Pressure Maximum For This Test	1,900	PSIG	* Do not exceed this pressure during test
Test Pressure Minimum For This Test	1,815	PSIG	* If test pressure falls below this point it is a failed test
Desired Test Pressure	1,850	PSIG	* This is the pressure to attain for the start of the test.

* Pipe Used In Test - 8" .219 WT X42-52

* Hiland Will Test To 110% Of MAOP

Test Procedure:

1. Clear all non essential personnel from testing area
2. Only Hiland Partners Employees Will Direct Testing Contractors Work
3. Verify all above ground fittings involved in test are tight and of the proper material design for test.
4. Review Safety Shutdown procedures with testing contractor.
5. Begin Pressureing pipe line
6. Stop and hold at 250 psig for 15 minutes to check for leaks
7. Stop and hold at 500 psig for 15 minutes to check for leaks
8. Stop and hold at 750 psig for 15 minutes to check for leaks
8. Stop and hold at 1000 psig for 15 minutes to check for leaks
8. Stop and hold at 1500 psig for 15 minutes to check for leaks
10. Stop at desired test pressure and hold for 8 hrs.

Watford City Plant 8" Residue Pipeline

Pat Dodd

Pat Dodd