

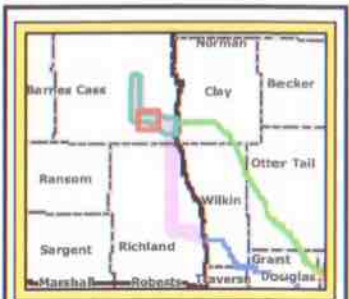
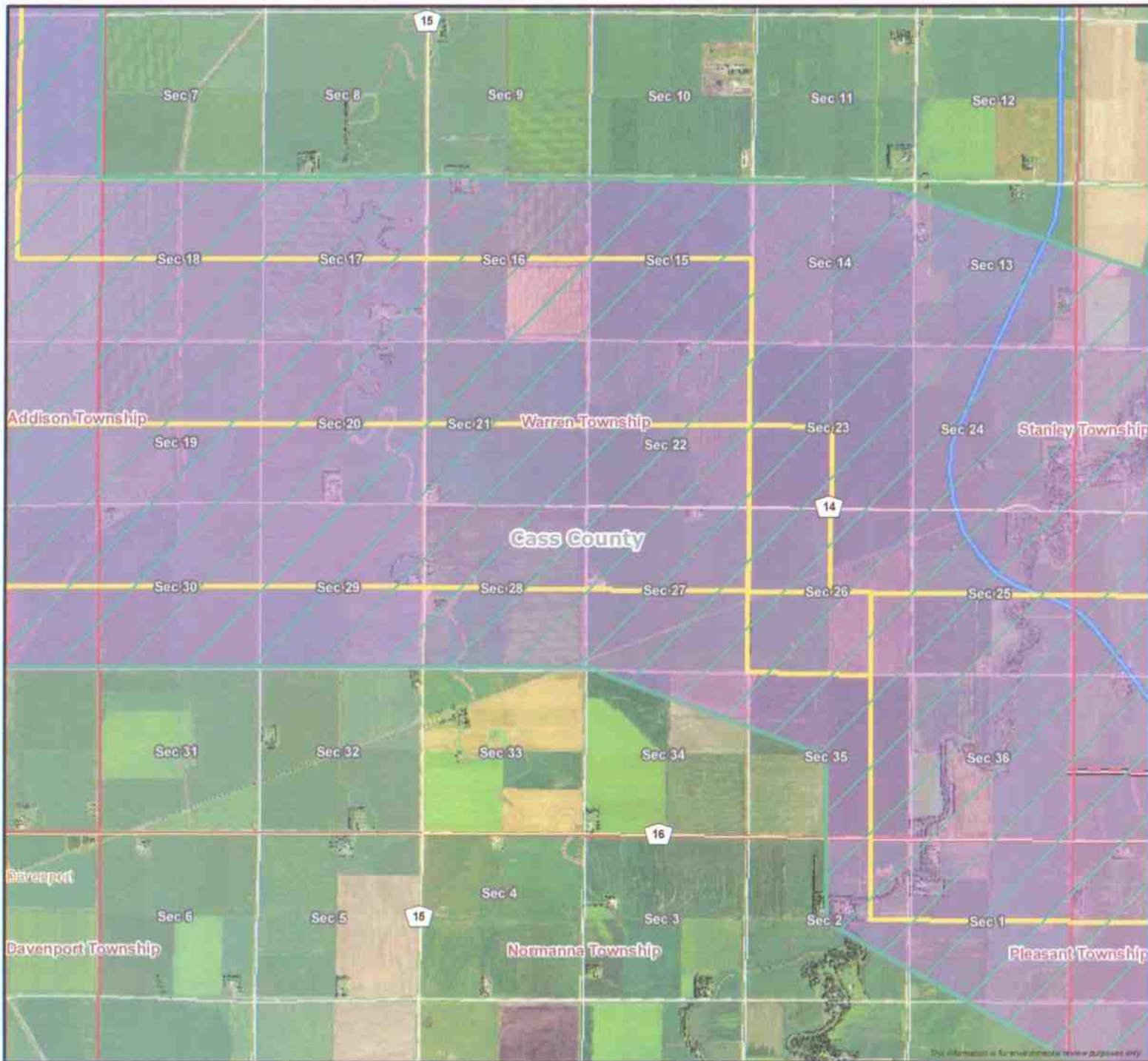
**Legend**

- Representative Routing Considerations
- Option 1 Corridor
- Option 2 Corridor
- Bison Substation Siting Area
- MN Proposed Routes**
- Preferred Route
- Alternate Route A
- Municipal Boundary
- Municipal Boundary
- Townships MN
- Electric Substation
- Transmission Lines (kV)**
- 400
- 345
- 250
- 230
- 115
- 69
- USACE Diversion/Levee Alignments**
- Minnesota Diversion Alignment
- Minnesota Diversion Tie-Back
- Levee Alignment
- North Dakota Diversion Alignment
- North Dakota Diversion Tie-Back
- Levee Alignment



**Fargo to St. Cloud  
345 kV Transmission  
Line Project**

Map For: City of Fargo  
 G:\CapX\_Fargo\GIS\_Data\20100519  
 ND Public Meetings  
 Location: Mapleton Date: 5/20/2010



**Legend**

- Representative Routing Considerations
- Option 1 Corridor
- Option 2 Corridor
- Bison Substation Siting Area
- MN Proposed Routes**
- Preferred Route
- Alternate Route A
- Municipal Boundary
- Municipal Boundary
- Townships MN
- Electric Substation
- Transmission Lines (kV)**
- 400
- 345
- 250
- 230
- 115
- 69
- USACE Diversion/Levee Alignments**
- Minnesota Diversion Alignment
- Minnesota Diversion Tie-Back Levee Alignment
- North Dakota Diversion Alignment
- North Dakota Diversion Tie-Back Levee Alignment



**Fargo to St. Cloud  
345 kV Transmission  
Line Project**

Map For: City of Fargo  
 G:\CapX\_Fargo\GIS\_Data\20100519  
 ND Public Meetings  
 Location: Mapleton      Date: 5/20/2010

This information is for informational review purposes only.