

Mainline construction paralleling existing pipeline = 29,898' (5.66 miles)
 Mainline construction not paralleling existing pipeline = 27,906' (5.29 miles)



- Proposed 12" Line Replacement
- Existing Enbridge Pipelines
- Route Maps

MW	DS	DS	10/12/10	0	ND-PSC FILING
DRAWN	CHECKED	APPROVED	DATE	REV NO.	DESCRIPTION

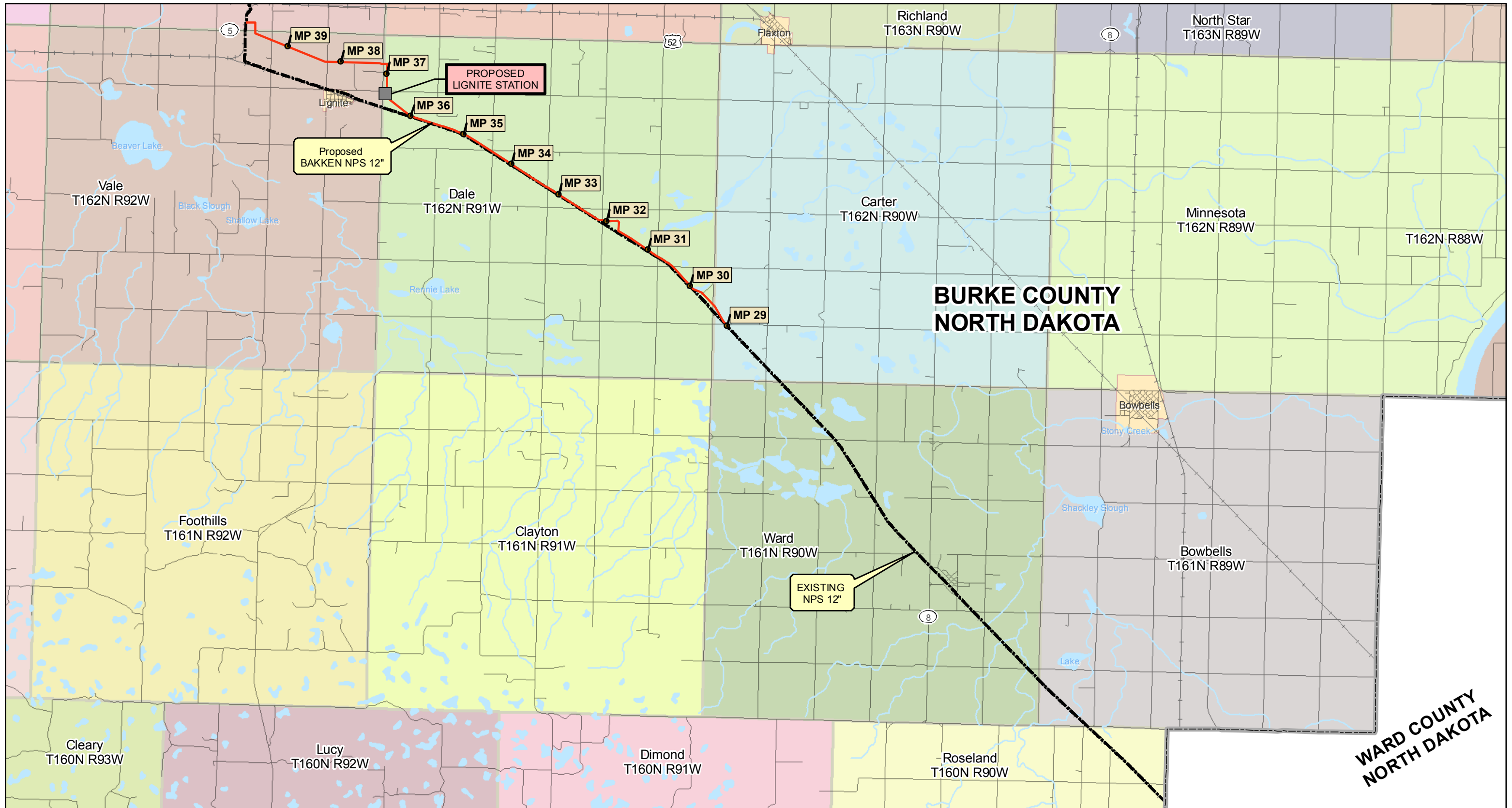
PREPARED BY:
 ROONEY ENGINEERING, INC.
 CENTENNIAL, COLORADO
 303-792-5911

ENBRIDGE PIPELINES (NORTH DAKOTA) LLC

BAKKEN PIPELINE PROJECT US
 ROUTE MAP
 INDEX
 S20 T156N R86W to S34 T163N R92W

DRAWN: MWW CHECKED: DS
 DATE: 10/12/10 SCALE: AS SHOWN

2716-M-01000

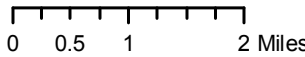


**BURKE COUNTY
NORTH DAKOTA**

**WARD COUNTY
NORTH DAKOTA**

Legend

- Milepost
- Existing Lines
- Proposed NPS 12



Oct 15, 2010

ENBRIDGE PIPELINES (NORTH DAKOTA) LLC

Bakken Pipeline Project US
North Dakota

BAKKEN-000 BURKE

**BURKE COUNTY
NORTH DAKOTA**

**WARD COUNTY
NORTH DAKOTA**

**RENVILLE COUNTY
NORTH DAKOTA**

**MOUNTRAIL COUNTY
NORTH DAKOTA**

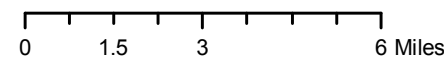
PROPOSED
KENASTON FACILITY

BERTHOLD FACILITY

Existing NPS 12"

Legend

- Milepost
- Existing Lines
- Proposed NPS 12

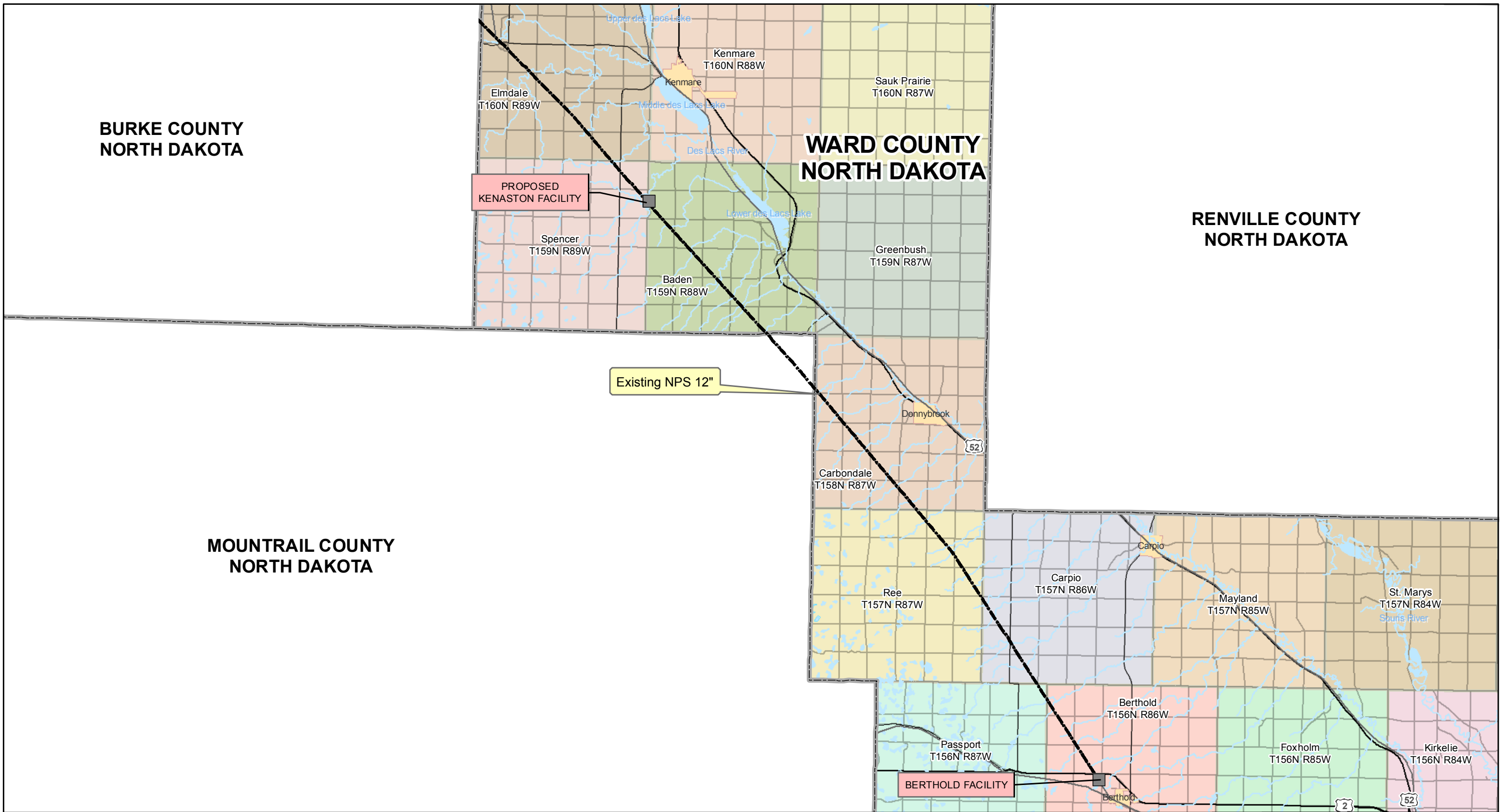


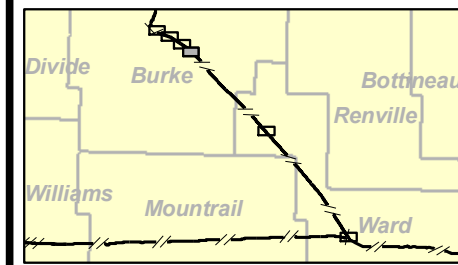
Oct 15, 2010

ENBRIDGE PIPELINES (NORTH DAKOTA) LLC

Bakken Pipeline Project US
North Dakota

BAKKEN-000 WARD





- Proposed 12" Line Replacement
- Existing Enbridge Pipelines
- Environmental Corridor
- Study Area
- Station
- NWI Wetlands
- Streams

DRAWN	CHECKED	APPROVED	DATE	REV NO.	DESCRIPTION

PREPARED BY:
ROONEY ENGINEERING, INC.
CENTENNIAL, COLORADO
303-792-5911

ENBRIDGE PIPELINES (NORTH DAKOTA) LLC

BAKKEN PIPELINE PROJECT US

ROUTE MAPS - ~11 MILE REPLACEMENT

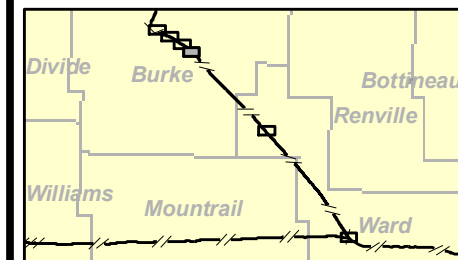
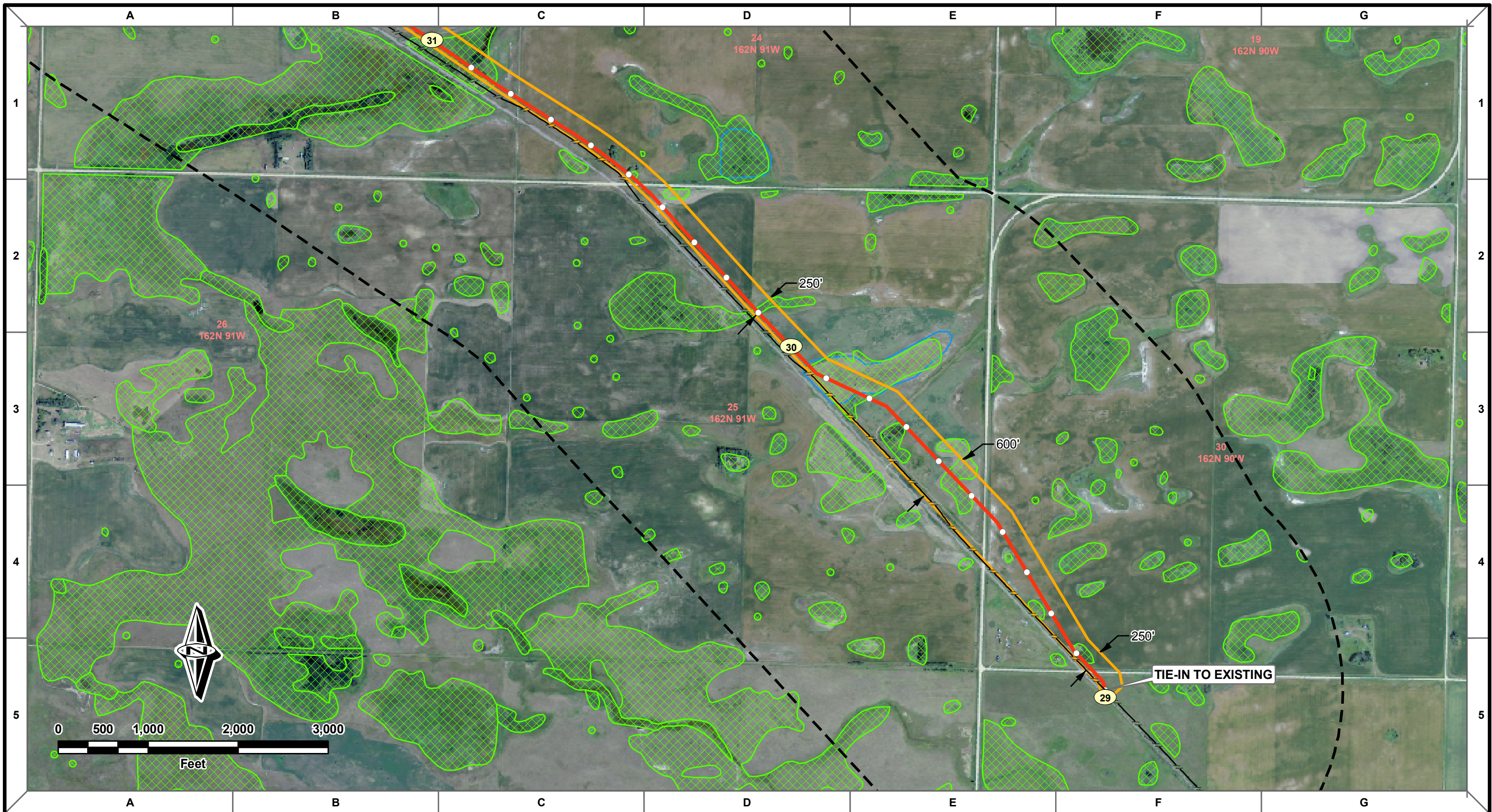
SHEET 1

S31 T162N R90W to S34 T163N R92W

DRAWN: MWV CHECKED: DS

DATE: 10/12/10 SCALE: AS SHOWN

2716-M-01001



- Proposed 12" Line Replacement
- Environmental Corridor
- Existing Enbridge Pipelines
- Study Area
- NWI Wetlands
- Station
- Streams

MW	DS	DS	10/12/10	0					ND-PSC FILING
DRAWN	CHECKED	APPROVED	DATE	REV NO.					DESCRIPTION

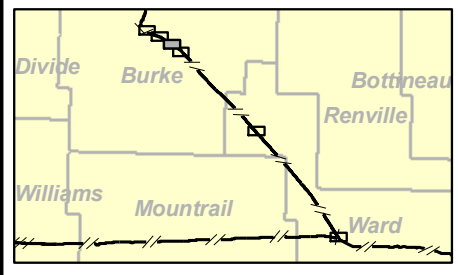
PREPARED BY:
 ROONEY ENGINEERING, INC.
 CENTENNIAL, COLORADO
 303-792-8911

ENBRIDGE PIPELINES (NORTH DAKOTA) LLC

BAKKEN PIPELINE PROJECT US
ROUTE MAPS - ~11 MILE REPLACEMENT
SHEET 1
S31 T162N R90W to S34 T163N R92W

DRAWN: MWV	CHECKED: DS
DATE: 10/12/10	SCALE: AS SHOWN

2716-M-01001



- Proposed 12" Line Replacement
- Environmental Corridor
- Existing Enbridge Pipelines
- Study Area
- NWI Wetlands
- Station
- Streams

MW	DS	DS	10/12/10	0	ND-PSC FILING
DRAWN	CHECKED	APPROVED	DATE	REV NO.	DESCRIPTION

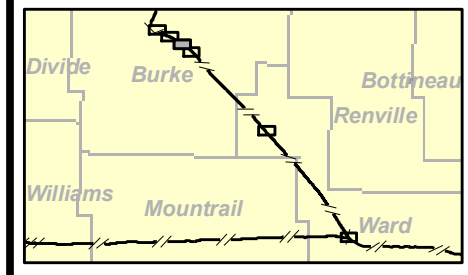
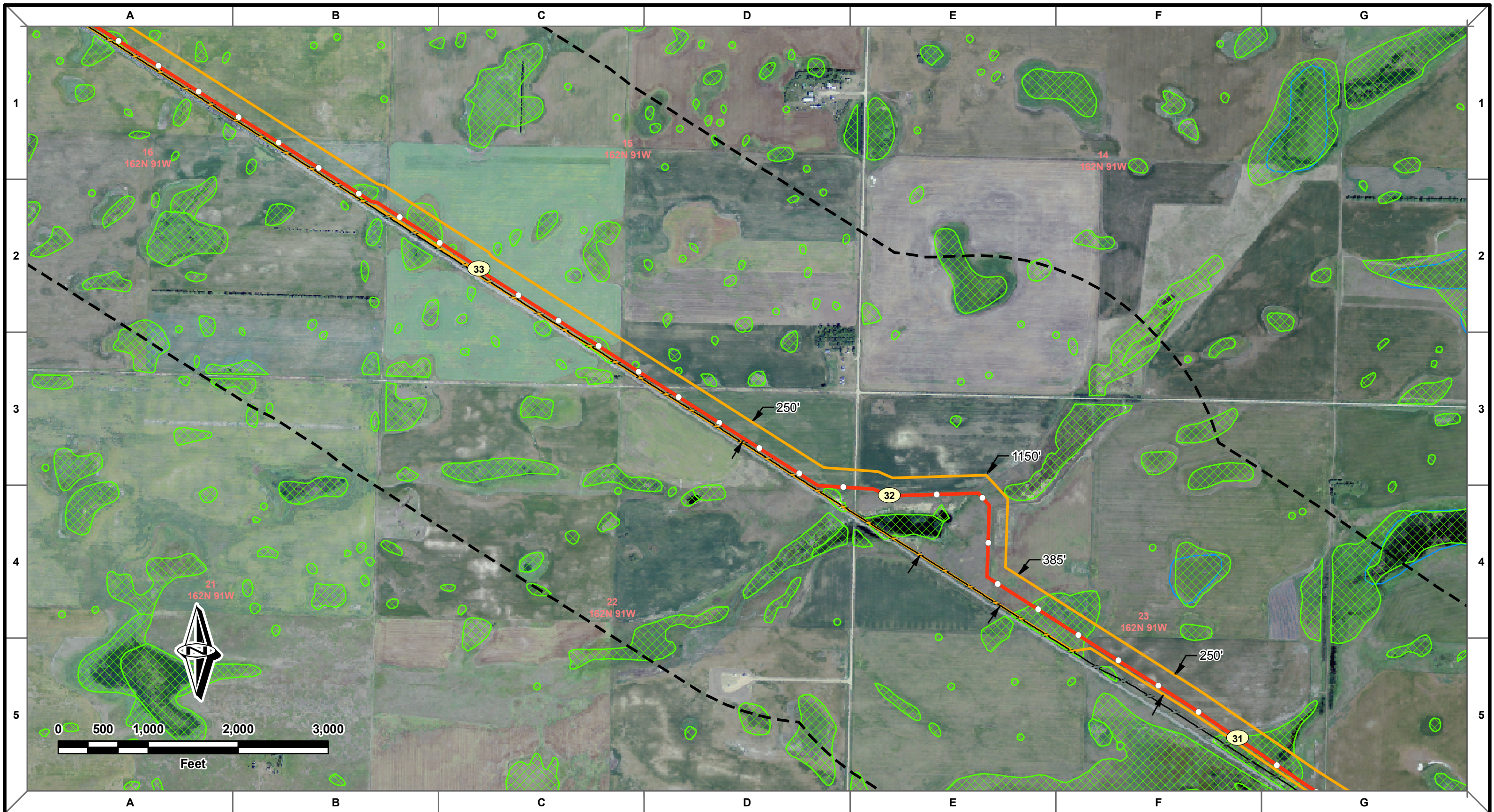
PREPARED BY:
ROONEY ENGINEERING, INC.
CENTENNIAL, COLORADO
303-792-5911

ENBRIDGE PIPELINES (NORTH DAKOTA) LLC

BAKKEN PIPELINE PROJECT US
ROUTE MAPS - ~11 MILE REPLACEMENT
SHEET 2
S31 T162N R90W to S34 T163N R92W

DRAWN: MWV CHECKED: DS
DATE: 10/12/10 SCALE: AS SHOWN

2716-M-01002



- Proposed 12" Line Replacement
- Environmental Corridor
- Existing Enbridge Pipelines
- Study Area
- NWI Wetlands
- Streams
- Station

MW	DS	DS	10/12/10	0					
DRAWN	CHECKED	APPROVED	DATE	REV NO.					DESCRIPTION

PREPARED BY:
 ROONEY ENGINEERING, INC.
 CENTENNIAL, COLORADO
 303-792-8911

ENBRIDGE PIPELINES (NORTH DAKOTA) LLC

BAKKEN PIPELINE PROJECT US

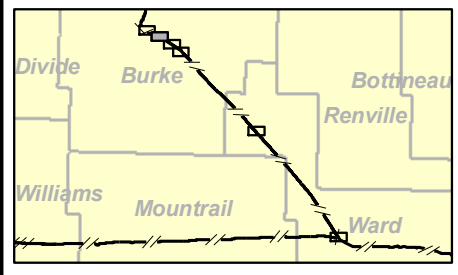
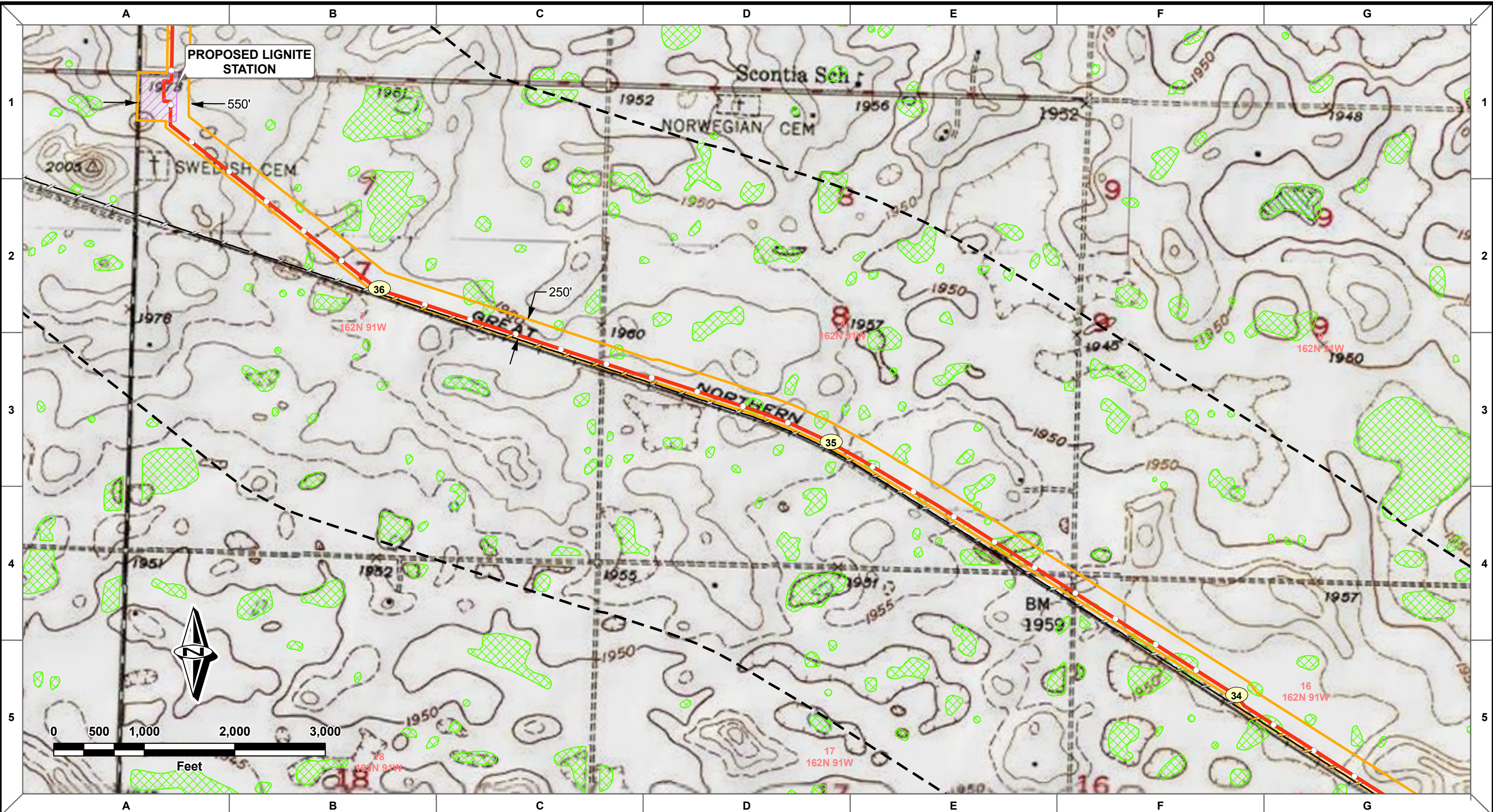
ROUTE MAPS - ~11 MILE REPLACEMENT

SHEET 2

S31 T162N R90W to S34 T163N R92W

DRAWN: MWV	CHECKED: DS
DATE: 10/12/10	SCALE: AS SHOWN

2716-M-01002



- Proposed 12" Line Replacement
- Environmental Corridor
- Existing Enbridge Pipelines
- Study Area
- Station
- NWI Wetlands
- Streams

MW	DS	DS	10/12/10	0	ND-PSC FILING
DRAWN	CHECKED	APPROVED	DATE	REV NO.	DESCRIPTION

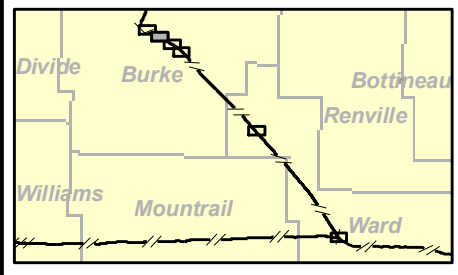
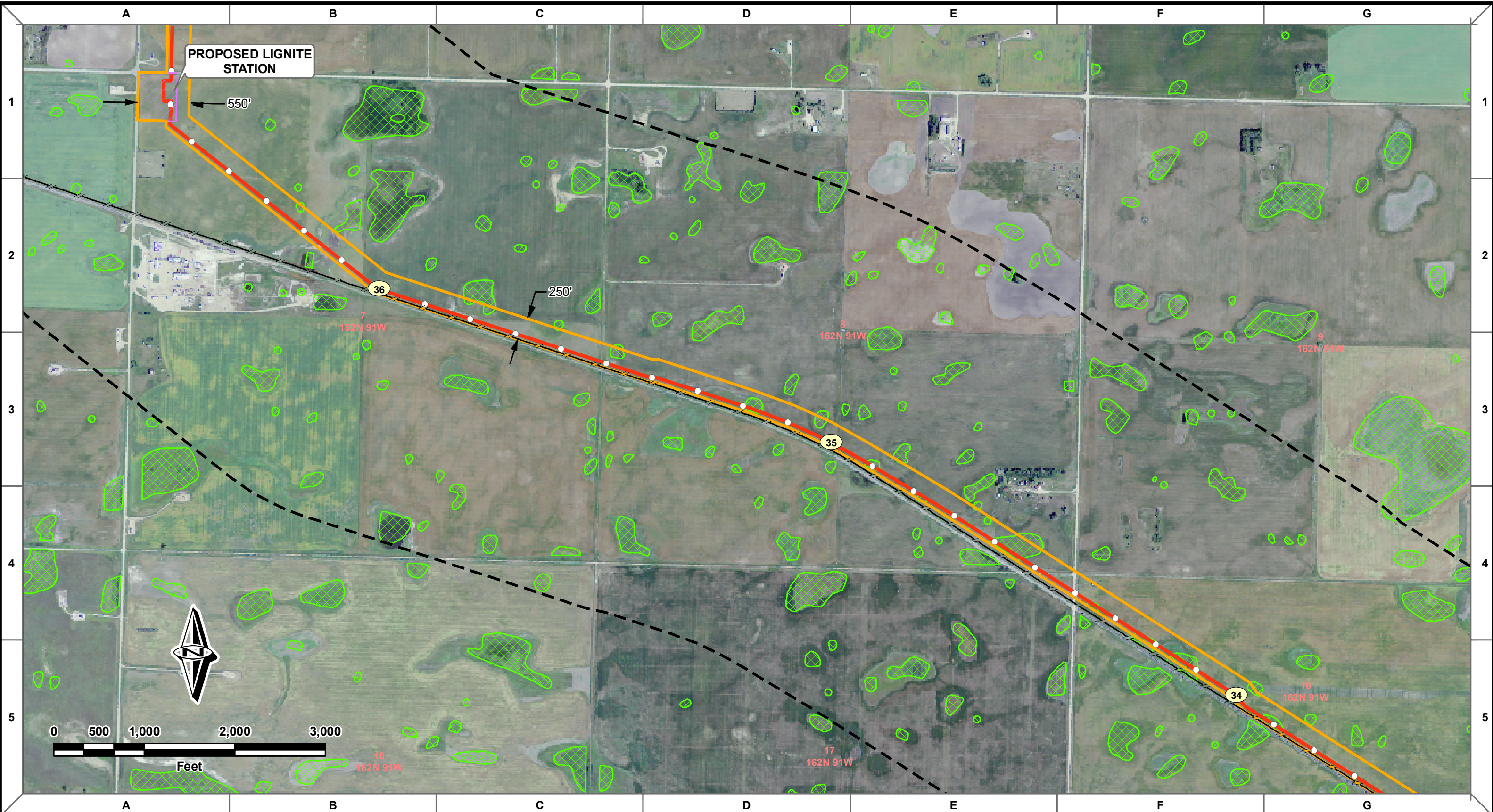
PREPARED BY:
ROONEY ENGINEERING, INC.
 CENTENNIAL, COLORADO
 303-792-5911

ENBRIDGE PIPELINES (NORTH DAKOTA) LLC

BAKKEN PIPELINE PROJECT US
ROUTE MAPS - ~11 MILE REPLACEMENT
SHEET 3
 S31 T162N R90W to S34 T163N R92W

DRAWN: MWV	CHECKED: DS
DATE: 10/12/10	SCALE: AS SHOWN

2716-M-01003



- Proposed 12" Line Replacement
- Environmental Corridor
- Existing Enbridge Pipelines
- Study Area
- Station
- NWI Wetlands
- Streams

MW	DS	DS	10/12/10	0					
DRAWN	CHECKED	APPROVED	DATE	REV NO.					DESCRIPTION

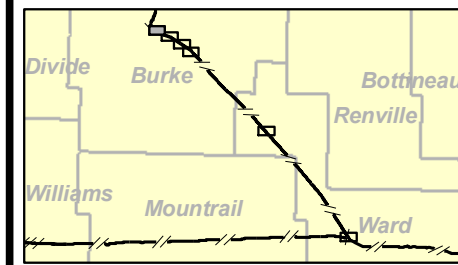
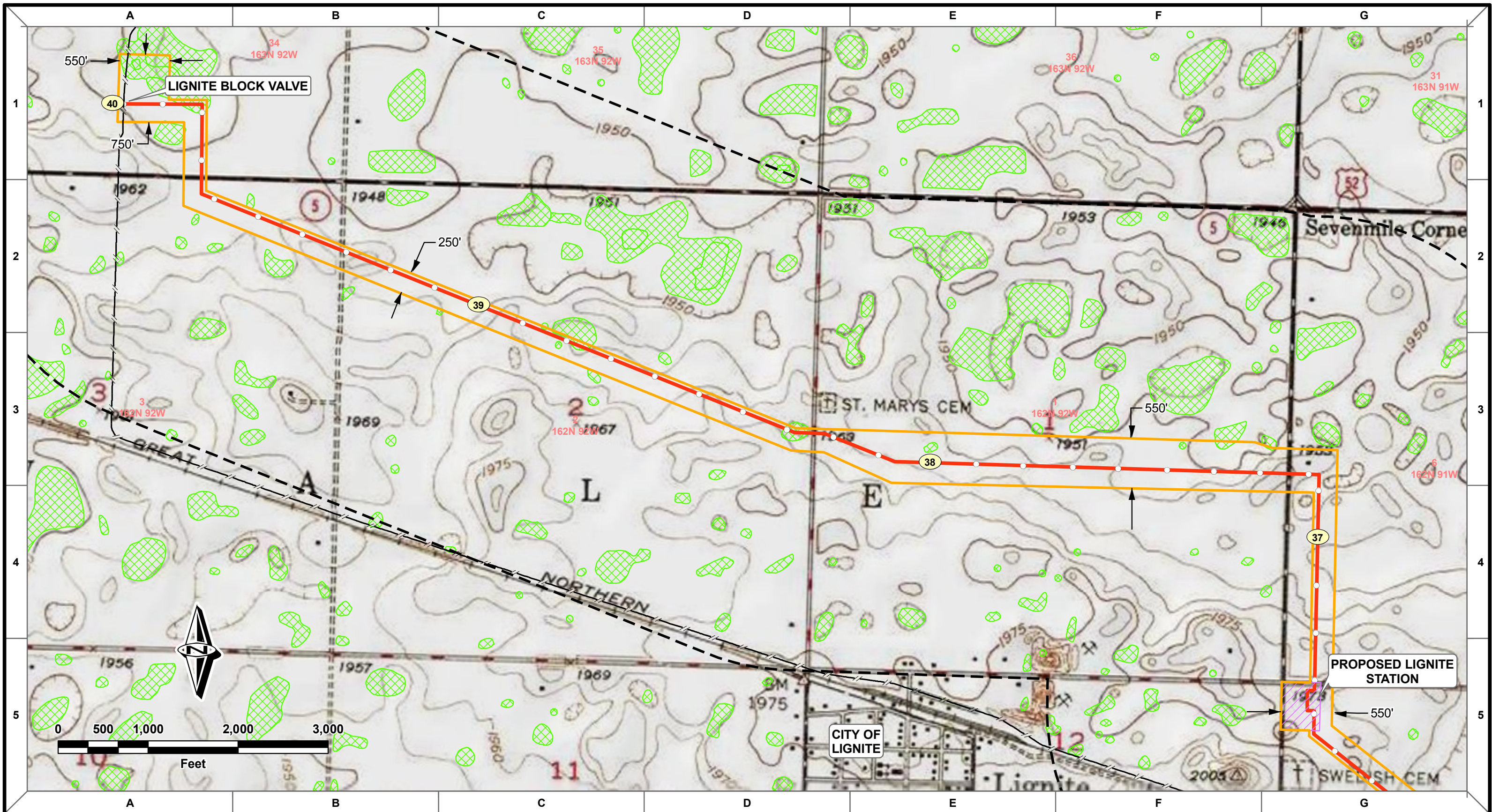
PREPARED BY:
 ROONEY ENGINEERING, INC.
 CENTENNIAL, COLORADO
 303-792-8911

ENBRIDGE PIPELINES (NORTH DAKOTA) LLC

BAKKEN PIPELINE PROJECT US
 ROUTE MAPS - ~11 MILE REPLACEMENT
 SHEET 3
 S31 T162N R90W to S34 T163N R92W

DRAWN: MWV	CHECKED: DS
DATE: 10/12/10	SCALE: AS SHOWN

2716-M-01003



- Proposed 12" Line Replacement
- Environmental Corridor
- Existing Enbridge Pipelines
- Study Area
- NWI Wetlands
- Streams
- Station

MW	DS	DS	10/12/10	0	ND-PSC FILING
DRAWN	CHECKED	APPROVED	DATE	REV NO.	DESCRIPTION

PREPARED BY:
 ROONEY ENGINEERING, INC.
 CENTENNIAL, COLORADO
 303-792-5911

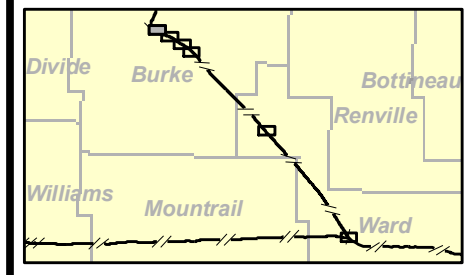
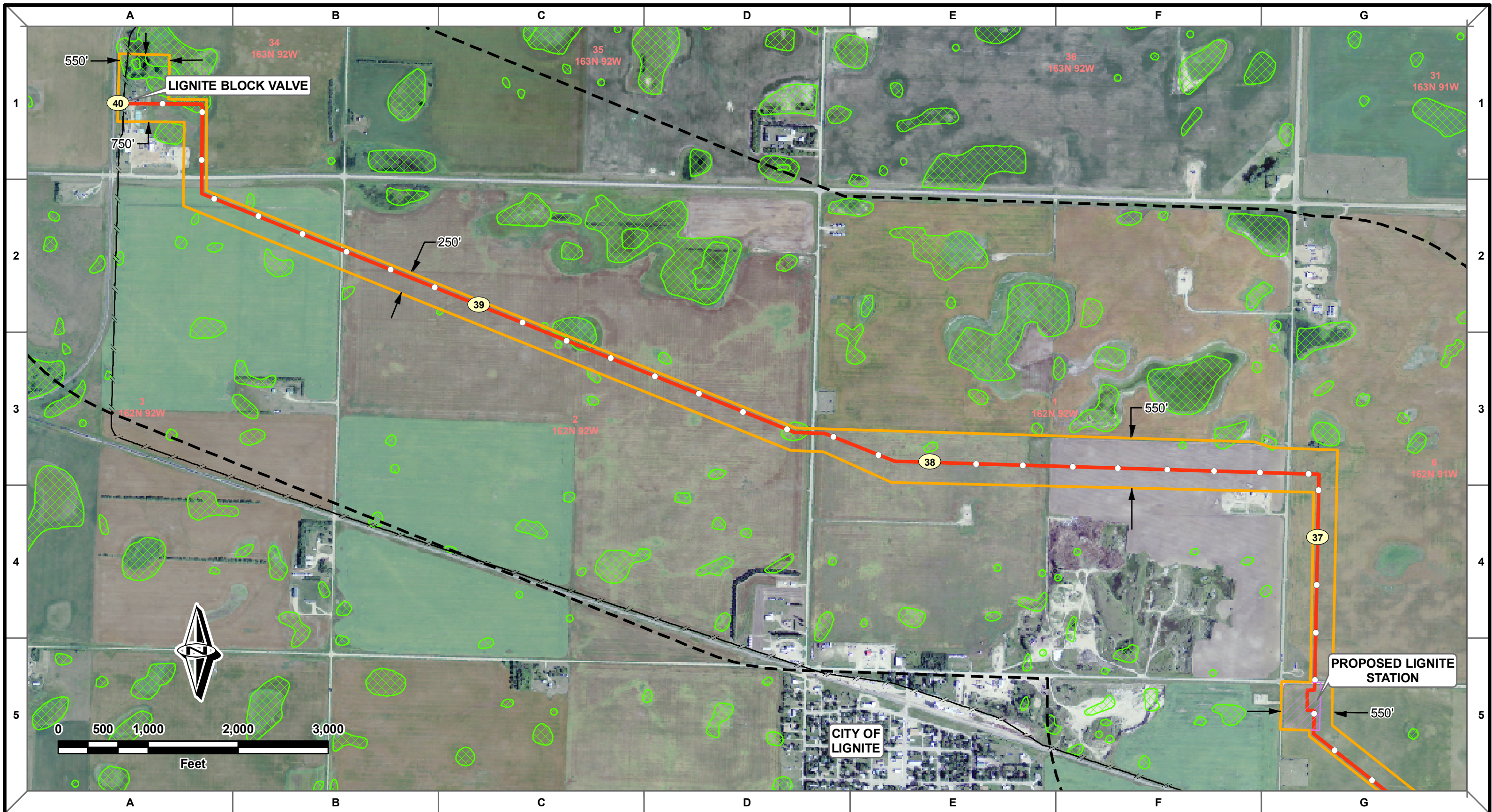
ENBRIDGE PIPELINES (NORTH DAKOTA) LLC

BAKKEN PIPELINE PROJECT US
ROUTE MAPS - ~11 MILE REPLACEMENT
SHEET 4

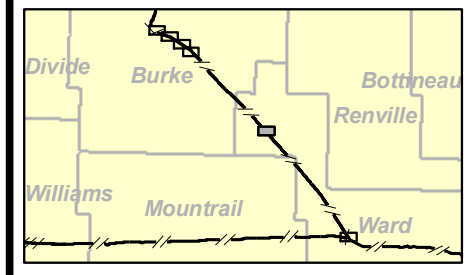
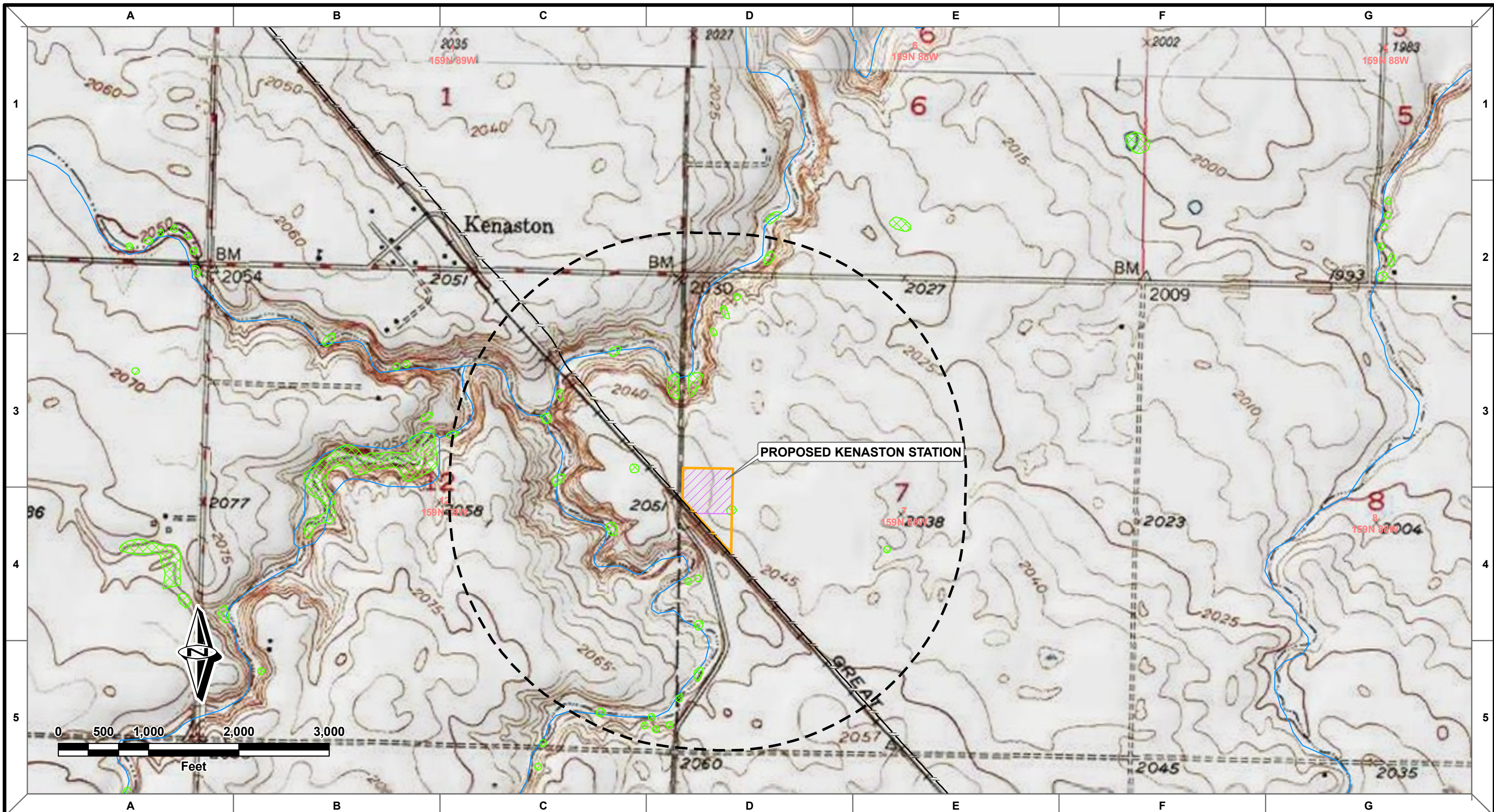
S31 T162N R90W to S34 T163N R92W

DRAWN: MWV	CHECKED: DS
DATE: 10/12/10	SCALE: AS SHOWN

2716-M-01004



- Proposed 12" Line Replacement
- Existing Enbridge Pipelines
- Environmental Corridor
- Study Area
- NWI Wetlands
- Station
- Streams



Proposed 12" Line Replacement	Environmental Corridor
Existing Enbridge Pipelines	Study Area
Station	NWI Wetlands
	Streams

MW	DS	DS	10/12/10	0	ND-PSC FILING
DRAWN	CHECKED	APPROVED	DATE	REV NO.	DESCRIPTION

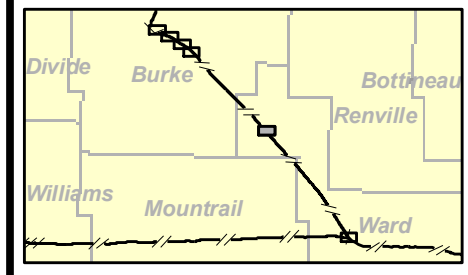
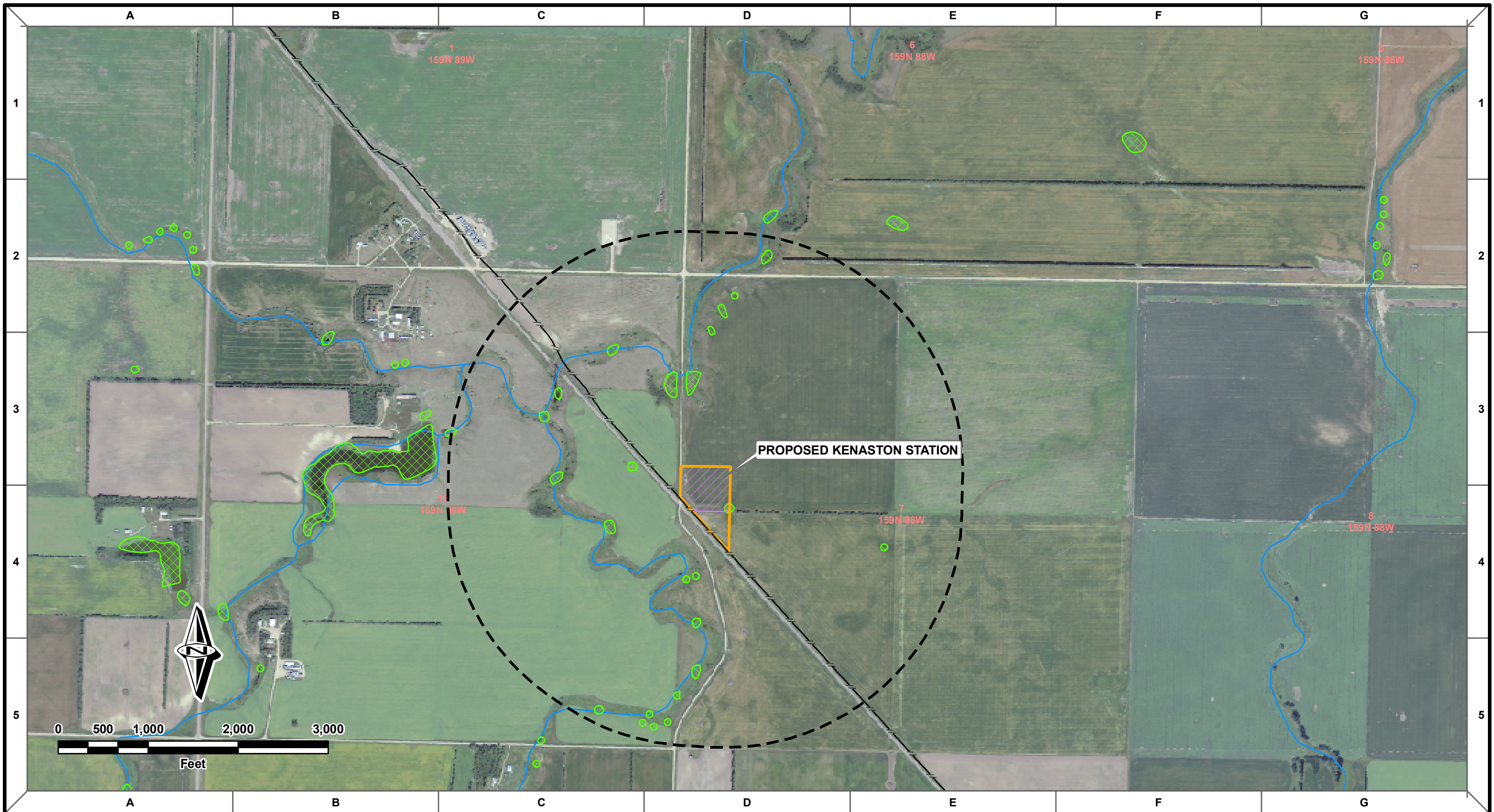
PREPARED BY:
 ROONEY ENGINEERING, INC.
 CENTENNIAL, COLORADO
 303-792-5911

ENBRIDGE PIPELINES (NORTH DAKOTA) LLC

BAKKEN PIPELINE PROJECT US
ROUTE MAP - KENASTON STATION
SHEET 5
 S7 T159 R88W

DRAWN: MWV	CHECKED: DS
DATE: 10/12/10	SCALE: AS SHOWN

2716-M-01005



- Proposed 12" Line Replacement
- Existing Enbridge Pipelines
- Environmental Corridor
- Study Area
- NWI Wetlands
- Station
- Streams

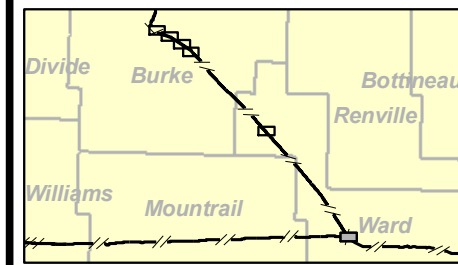
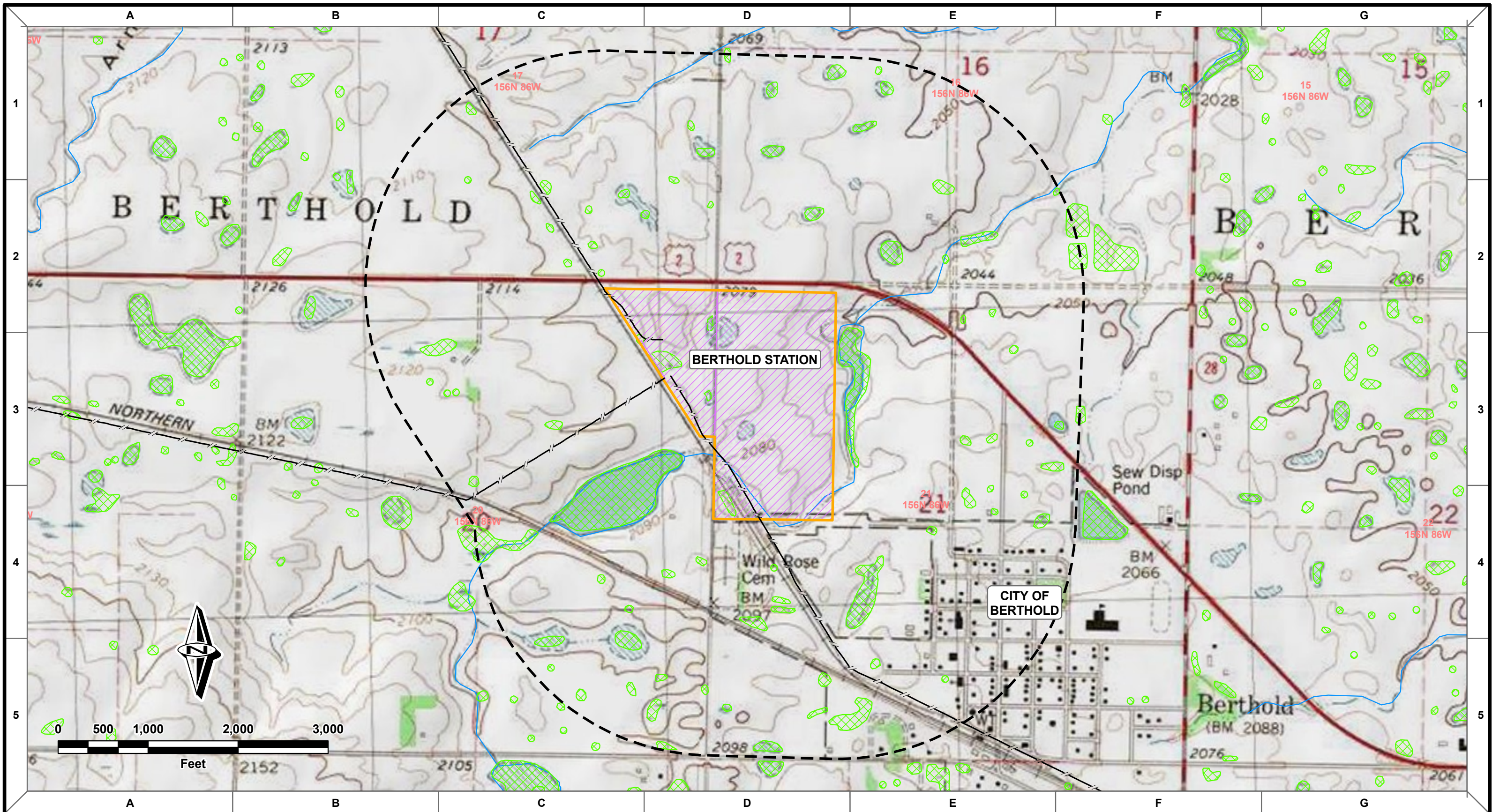
MW	DS	DS	10/12/10	0	ND-PSC FILING
DRAWN	CHECKED	APPROVED	DATE	REV NO.	DESCRIPTION

PREPARED BY:
 ROONEY ENGINEERING, INC.
 CENTENNIAL, COLORADO
 303-792-5911

ENBRIDGE PIPELINES (NORTH DAKOTA) LLC
BAKKEN PIPELINE PROJECT US
ROUTE MAP - KENASTON STATION
SHEET 5
S7 T159N R88W

DRAWN: MWW	CHECKED: DS
DATE: 10/12/10	SCALE: AS SHOWN

2716-M-01005



- Proposed 12" Line Replacement
- - - Existing Enbridge Pipelines
- Station
- Environmental Corridor
- Study Area
- NWI Wetlands
- Streams

MW	DS	DS	10/12/10	0	ND-PSC FILING
DRAWN	CHECKED	APPROVED	DATE	REV NO.	DESCRIPTION

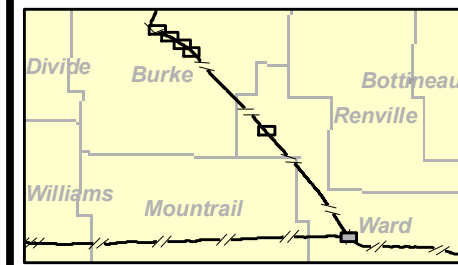
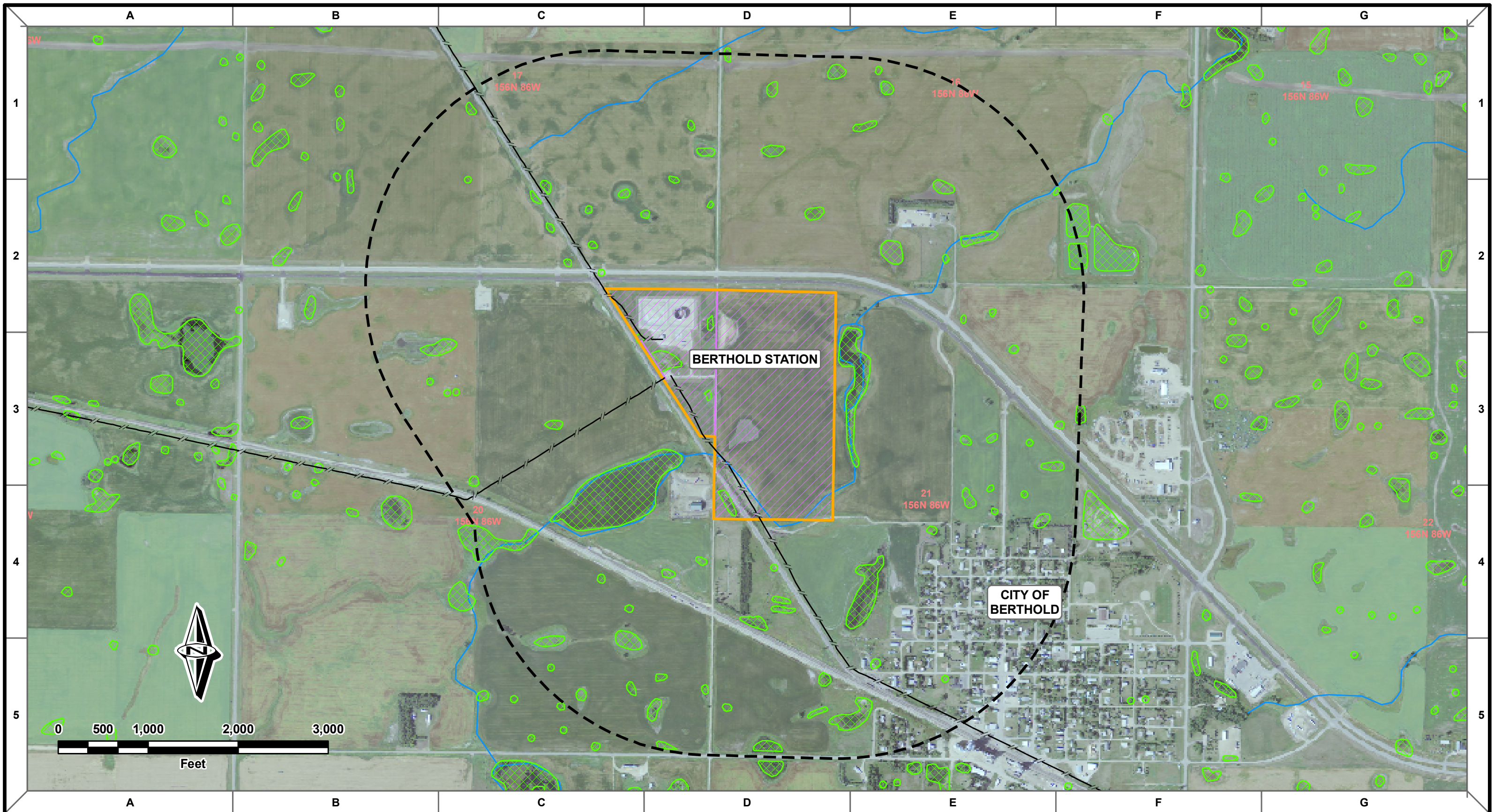
PREPARED BY:
 ROONEY ENGINEERING, INC.
 CENTENNIAL, COLORADO
 303-792-5911

ENBRIDGE PIPELINES (NORTH DAKOTA) LLC

BAKKEN PIPELINE PROJECT US
ROUTE MAP - BERTHOLD STATION
SHEET 6
 S20&21 T156N R86W

DRAWN: MWV	CHECKED: DS
DATE: 10/12/10	SCALE: AS SHOWN

2716-M-01006



- Proposed 12" Line Replacement
- Existing Enbridge Pipelines
- Environmental Corridor
- Study Area
- Station
- NWI Wetlands
- Streams

MW	DS	DS	10/12/10	0	ND-PSC FILING				
DRAWN	CHECKED	APPROVED	DATE	REV NO.	DESCRIPTION				

PREPARED BY:
 ROONEY ENGINEERING, INC.
 CENTENNIAL, COLORADO
 303-792-5911

ENBRIDGE PIPELINES (NORTH DAKOTA) LLC

BAKKEN PIPELINE PROJECT US
 ROUTE MAP - BERTHOLD STATION
 SHEET 6
 S20&21 T156N R86W

DRAWN: MWW	CHECKED: DS
DATE: 10/12/10	SCALE: AS SHOWN

2716-M-01006