

HORIZONTAL DATUM: NAD83 NORTH DAKOTA STATE PLANE,
NORTH ZONE, US FOOT

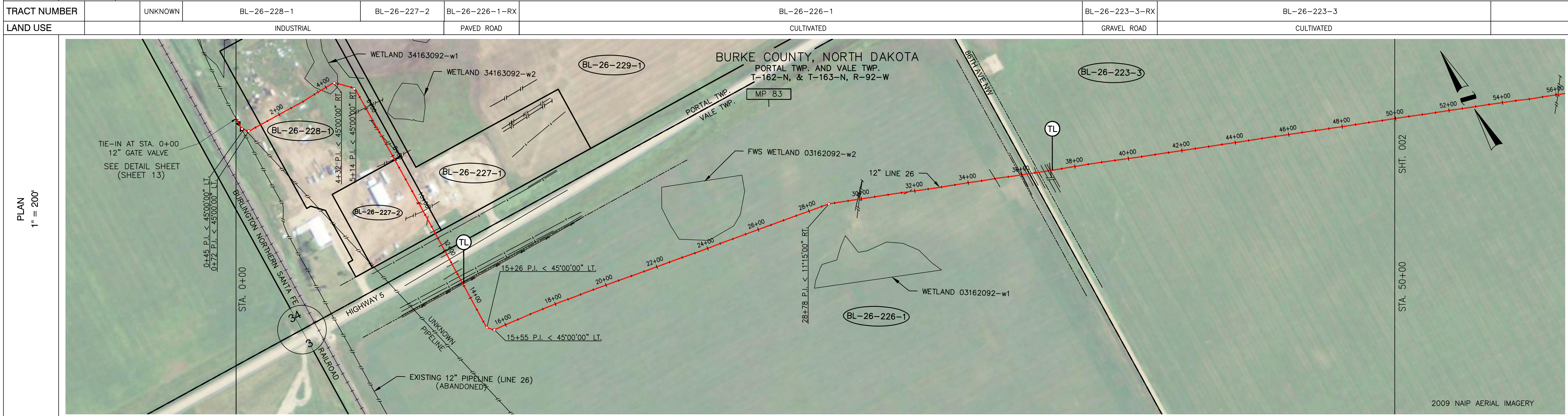
VERTICAL DATUM: NAVD 88

AS-BUILT DATES: 8-24-11 TO 12-9-11

NPS 12" LINE 26 REPLACEMENT
DISTANCE: 10.8 MILES

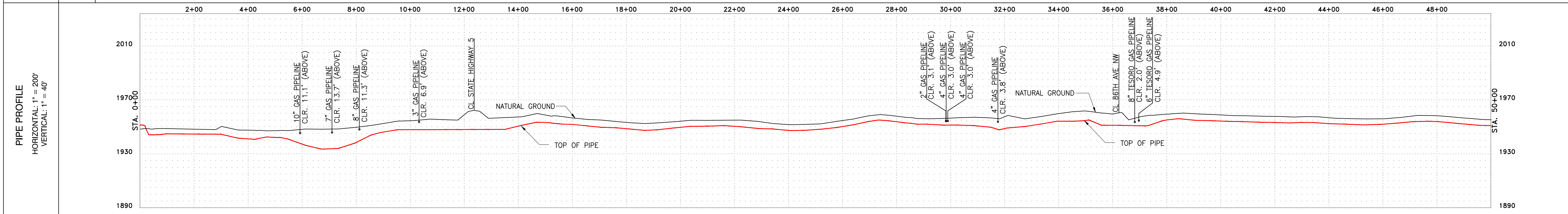
NO SCALE	AS-BUILT REVISION 0	3-2-12
----------	---------------------	--------

CROSSING INFORMATION							
	XX" LINE MATERIALS ALL PIPE IS XX" O.D. API 5L-X-52 STEEL PIPE FBE COATED						
TRACT NUMBER	UNKNOWN	BL-26-228-1	BL-26-227-2	BL-26-226-1-RX	BL-26-226-1	BL-26-223-3-RX	BL-26-223-3
LAND USE		INDUSTRIAL		PAVED ROAD	CULTIVATED	GRAVEL ROAD	CULTIVATED



ENVIRONMENTAL	34163092-W1
---------------	-------------

CROSSING INFORMATION	<p>0+00 BEGIN STA. 12" GATE VALVE 5+45 P.I. < 45'00"00" LT. 5+72 P.I. < 45'00"00" LT.</p> <p>1+31 PROPERTY LINE 3+60 WETLAND BOUNDARY 4+32 P.I. < 45'00"00" RT. 4+47 WETLAND BOUNDARY 5+14 P.I. < 45'00"00" RT. 5+95 10" GAS PIPELINE 7+12 7" GAS PIPELINE 8+14 8" GAS PIPELINE 8+17 PROPERTY LINE 10+01 BURIED POWER LINE 10+68 BURIED TELEPHONE LINE 10+68 BURIED TELEPHONE LINE 11+28 ROAD R-O-W 11+28 BURIED TELEPHONE LINE 11+28 BURIED TELEPHONE LINE 11+77 CL DITCH 12+03 SECTION LINE 12+17 EDGE OF ROAD 12+52 HIGHWAY 5 12+52 CL DITCH 12+90 CL DITCH 13+11 BURIED TELEPHONE LINE 13+25 BURIED TELEPHONE LINE 13+37 ROAD R-O-W 13+42 OVERHEAD POWER (4 WIRE) 15+26 P.I. < 45'00"00" LT. 15+55 P.I. < 45'00"00" LT.</p> <p>28+78 P.I. < 11'15"00" RT.</p> <p>29+88 2" GAS PIPELINE 29+87 4" GAS PIPELINE 29+92 4" GAS PIPELINE</p> <p>31+77 4" GAS PIPELINE</p> <p>35+01 BURIED TELEPHONE LINE 35+04 ROAD R-O-W 35+99 CROP LINE 36+03 CL DITCH 36+20 EDGE OF ROAD 36+20 CL DITCH 36+23 SECTION LINE, PROPERTY LINE 36+37 EDGE OF ROAD 36+56 CL DITCH 36+65 ROAD R-O-W 37+00 6" TESSORO GAS PIPELINE 37+08 TEST LEAD 37+08 OVERHEAD POWER (4 WIRE)</p>						
	12" LINE MATERIALS	<p>ALL PIPE IS 12" O.D. API 5L-X-52</p> <p>0+00 to 3+85: 0.281" (425')</p> <p>3+85 to 4+56: 0.281" (67')</p> <p>4+56 to 5+40: 0.312" (307')</p> <p>5+40 to 8+57: 0.281" (98')</p> <p>8+57 to 9+55: 0.312" (398')</p> <p>9+55 to 13+37: 0.281" (165')</p> <p>13+37 to 15+14: 0.281" (14')</p> <p>15+14 to 15+62: 0.281" (15')</p> <p>15+62 to 2010: 0.281" (2010')</p> <p>2010 to 152: 0.312" (152')</p> <p>152 to 1276: 0.281" (1276')</p>					



LEGEND

- INTERSTATE HIGHWAY
- US HIGHWAY
- STATE HIGHWAY
- CO. STATE AID HIGHWAYS
- COUNTY ROAD
- M. P. MARKER
- AERIAL M.P. MARKER
- CIVIL TOWNSHIP LINE
- FOREIGN PIPELINE
- SECTION LINES
- ROADS
- BURIED PHONE LINE
- BURIED POWER LINE
- OVERHEAD POWER LINE
- WATER LINE
- GAS LINE
- FIBER OPTIC CABLE LINE
- PROPERTY LINE
- RAILROADS
- WATER WAYS, STREAMS, CREEKS, DITCHES
- ROCK SHIELD
- SET ON WEIGHTS
- CONCRETE COATING
- CASING
- FOAM PILLOW
- MOTOR OPERATED VALVE
- GATE VALVE
- TEE
- STOPPLE TEE
- REPAIR SLEEVE
- RECTIFIER
- WELD PLUS
- TEST LEAD

NOTES:

ENBRIDGE ENERGY # 1-800-858-5253
(L.C.) - LAND CONTRACT
RRX - RAILROAD CROSSING
WX - WATER CROSSING
R - ROAD CROSSING
LWA - LOW WET AREA
WL - WETLAND (SEE WETLAND DELINEATION DRAWINGS REPORT)
GOPHER STATE ONE-CALL 1-800-252-1166
ALL STATIONING IN TRUE (PIPE) LENGTH

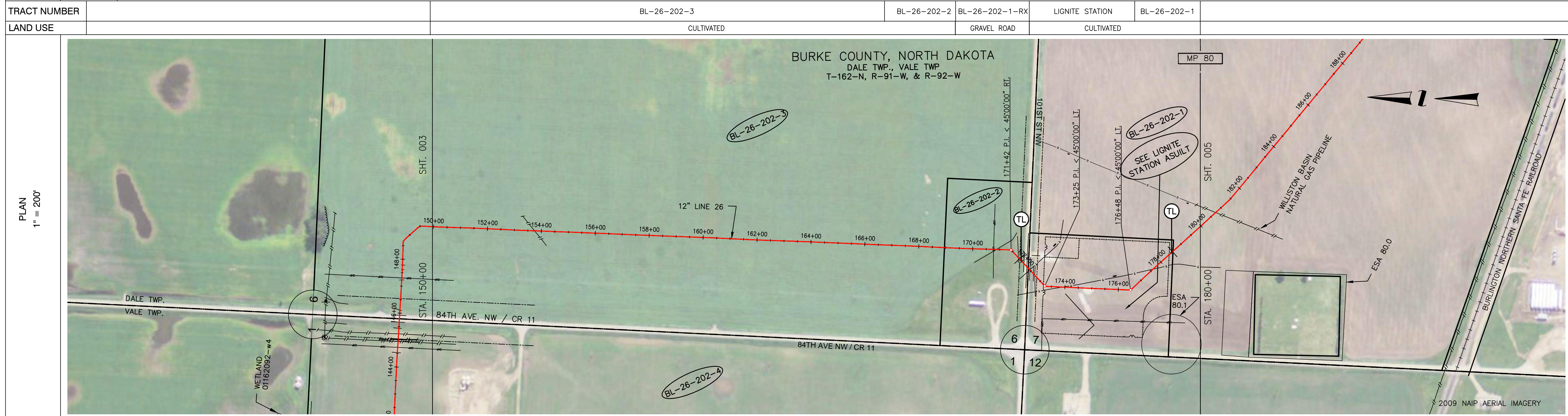
FIELD BOOK	FIELD BOOK	FIELD BOOK
NO.	REFERENCE DRAWINGS	
0 AS-BUILT	2-6-12	
REVISION	DATE	APPR.
SCALE	DATE	DRAWN
1"=200'	2-3-12	RVB
		TRR
SCALE IN FEET		

ENBRIDGE

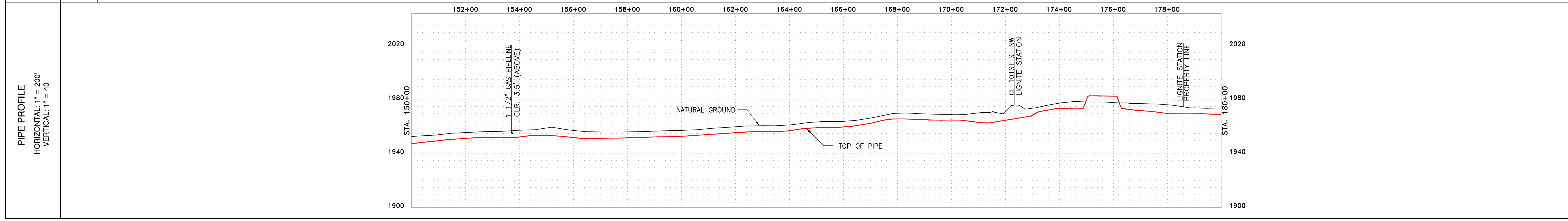
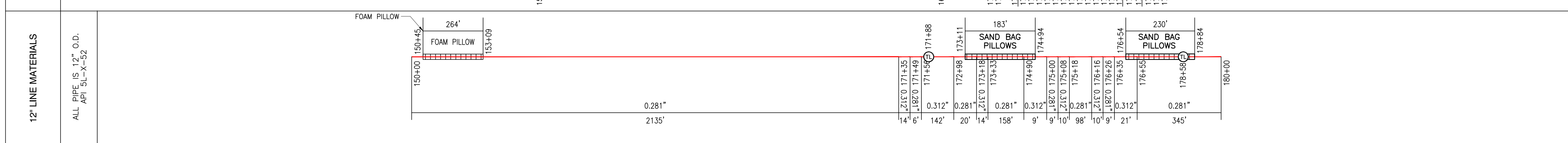
AS-BUILT ALIGNMENT
12" LINE 26
MP 83.5 TO MP 82.6
STA. 0+00 TO STA. 50+00
BURKE COUNTY, ND

DRAWING NUMBER	ROUTE SHEET
D-26-5.92-10115-01A-A-12	001

CROSSING INFORMATION	
XX" LINE MATERIALS	ALL PIPE IS XX" O.D. API 5L-X-52 STEEL PIPE FBE COATED
TRACT NUMBER	BL-26-202-3 BL-26-202-2 BL-26-202-1-RX LIGNITE STATION BL-26-202-1
LAND USE	CULTIVATED GRAVEL ROAD CULTIVATED



ENVIRONMENTAL	
CROSSING INFORMATION	<p>153+75 1 1/2" GAS PIPELINE</p> <p>168+95 PROPERTY LINE</p> <p>170+77 BURIED POWER LINE</p> <p>170+88 CROP LINE</p> <p>171+42 P.I. < 45'00"00" RT.</p> <p>171+82 CL DITCH</p> <p>171+88 ROAD E.O.W</p> <p>172+11 EDGE OF ROAD</p> <p>172+27 CL 101ST ST NW</p> <p>172+35 SECTION LINE, PROPERTY LINE</p> <p>172+44 EDGE OF ROAD</p> <p>172+44 CL DITCH</p> <p>172+70 BURIED TELEPHONE LINE</p> <p>172+82 ROAD R-O-W</p> <p>173+25 P.I. < 45'00"00" LI.</p> <p>173+92 BURIED TELEPHONE LINE</p> <p>176+48 P.I. < 45'00"00" LI.</p> <p>177+40 BURIED TELEPHONE LINE</p> <p>178+58 TEST LEAD</p> <p>178+61 PROPERTY LINE</p>



LEGEND

- INTERSTATE HIGHWAY
- US HIGHWAY
- STATE HIGHWAY
- CO. STATE AID HIGHWAYS
- COUNTY ROAD
- M. P. MARKER
- AERIAL M.P. MARKER
- CIVIL TOWNSHIP LINE
- FOREIGN PIPELINE
- SECTION LINES
- ROADS
- BURIED PHONE LINE
- BURIED POWER LINE
- OVERHEAD POWER LINE
- WATER LINE
- GAS LINE
- FIBER OPTIC CABLE LINE
- PROPERTY LINE
- RAILROADS
- WATER WAYS, STREAMS, CREEKS, DITCHES
- ROCK SHIELD
- SET ON WEIGHTS
- CONCRETE COATING
- CASING
- FOAM PILLOW
- MOTOR OPERATED VALVE
- GATE VALVE
- TEE
- STOPPLE TEE
- REPAIR SLEEVE
- RECTIFIER
- WELD PLUS
- TEST LEAD

NOTES:

ENBRIDGE ENERGY # 1-800-858-5253
(L.C.) - LAND CONTRACT
RRX - RAILROAD CROSSING
WX - WATER CROSSING
RW - ROAD CROSSING
LWA - LOW WET AREA
WL - WETLAND (SEE WETLAND DELINEATION DRAWINGS REPORT)
GOPHER STATE ONE-CALL 1-800-252-1166
ALL STATIONING IN TRUE (PIPE) LENGTH

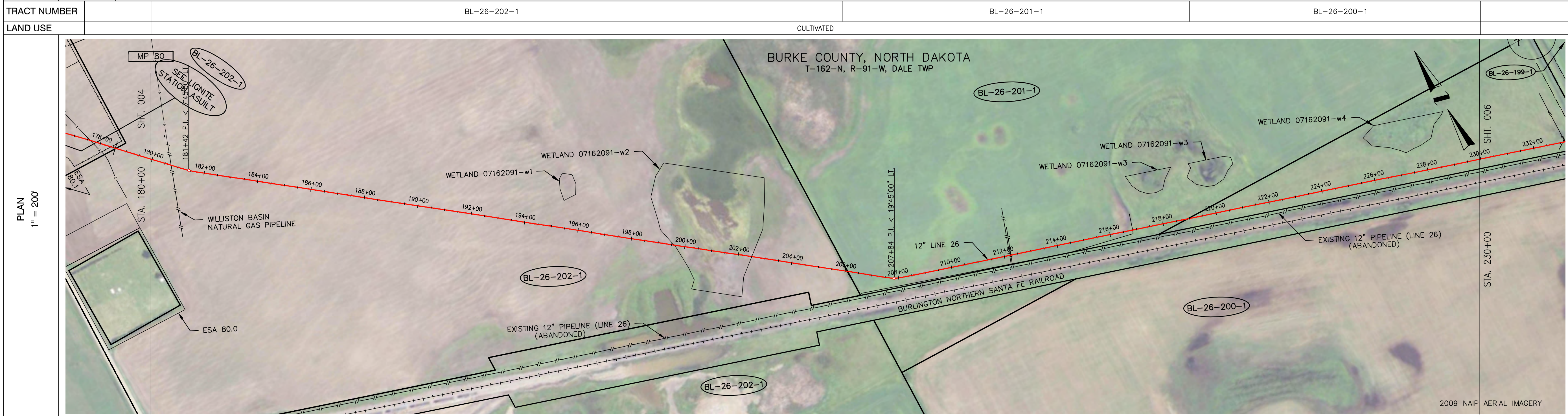
FIELD BOOK	FIELD BOOK	FIELD BOOK
NO.	REFERENCE DRAWINGS	
0 AS-BUILT		2-6-12
REVISION		DATE
SCALE	DATE	DRAWN
1"=200'	2-3-12	RVB
		APPROVED
		TRR
SCALE IN FEET		

ENBRIDGE

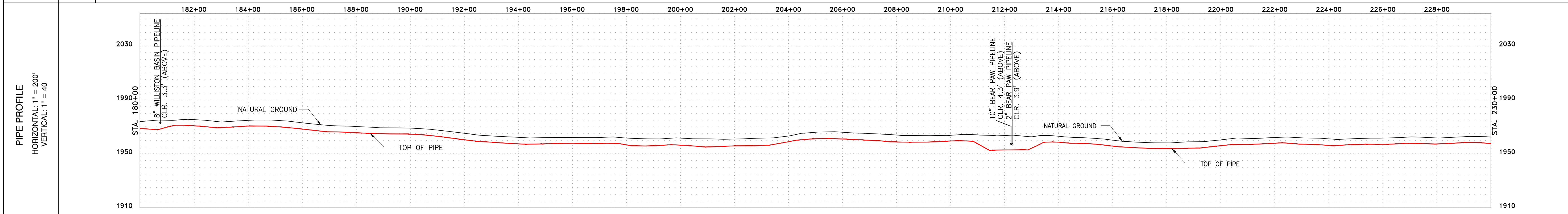
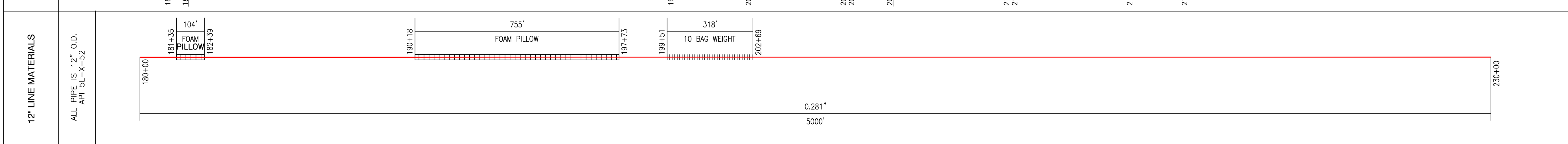
AS-BUILT ALIGNMENT
12" LINE 26
MP 80.6 TO MP 80.0
STA. 150+00 TO STA. 180+00
BURKE COUNTY, ND

DRAWING NUMBER	ROUTE SHEET
D-26-5.92-10115-04A-A-12	004

CROSSING INFORMATION			
	XX" LINE MATERIALS ALL PIPE IS XX" O.D. PIPE API 5L-X-52 STEEL PIPE FBE COATED		
TRACT NUMBER	BL-26-202-1	BL-26-201-1	BL-26-200-1
LAND USE	CULTIVATED		



ENVIRONMENTAL	07162091-W2		
---------------	-------------	--	--



LEGEND

- INTERSTATE HIGHWAY
- US HIGHWAY
- STATE HIGHWAY
- CO. STATE AID HIGHWAYS
- COUNTY ROAD
- M. P. MARKER
- AERIAL M.P. MARKER
- CIVIL TOWNSHIP LINE
- FOREIGN PIPELINE
- SECTION LINES
- ROADS
- BURIED PHONE LINE
- BURIED POWER LINE
- OVERHEAD POWER LINE
- WATER LINE
- GAS LINE
- FIBER OPTIC CABLE LINE
- PROPERTY LINE
- RAILROADS
- WATER POND, STREAM, CREEK, DITCHES
- ROCK SHIELD
- SET ON WEIGHTS
- CONCRETE COATING
- CASING
- FOAM PILLOW
- MOTOR OPERATED VALVE
- GATE VALVE
- TEE
- STOPPLE TEE
- REPAIR SLEEVE
- RECTIFIER
- WELD PLUS
- TEST LEAD

NOTES:
ENBRIDGE ENERGY # 1-800-858-5253
(L.C.) - LAND CONTRACT
RRX - RAILROAD CROSSING
WX - WATER CROSSING
RX - ROAD CROSSING
LWA - LOW WET AREA
WL - WETLAND (SEE WETLAND DELINEATION DRAWINGS REPORT)
GOPHER STATE ONE-CALL 1-800-252-1166
ALL STATIONING IN TRUE (PIPE) LENGTH

FIELD BOOK	FIELD BOOK	FIELD BOOK
NO.	REFERENCE DRAWINGS	

0	AS-BUILT	2-6-12
REVISION	DATE	APPR.

SCALE	DATE	DRAWN	APPROVED	APPROVED
1"=200'	2-3-12	RVB	TRR	

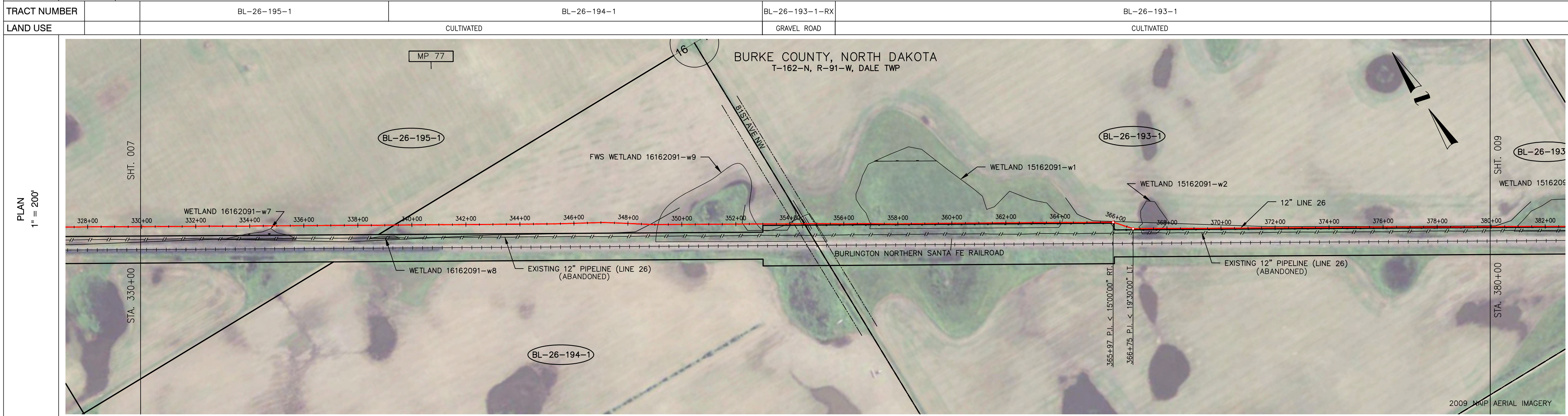
SCALE IN FEET

ENBRIDGE

AS-BUILT ALIGNMENT
12" LINE 26
MP 80.0 TO MP 79.1
STA. 180+00 TO STA. 230+00
BURKE COUNTY, ND

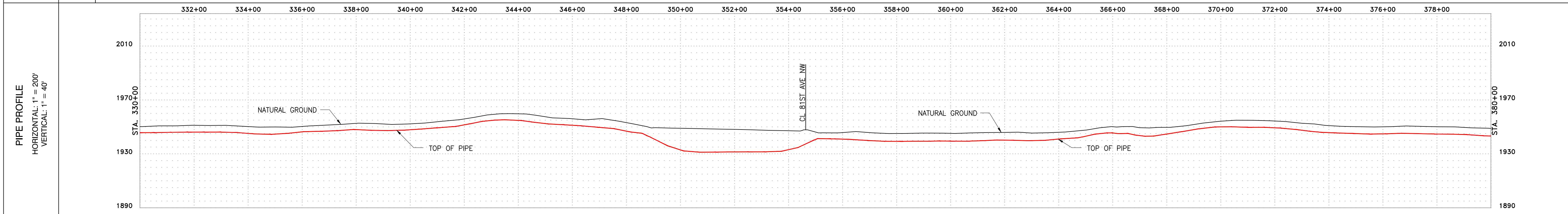
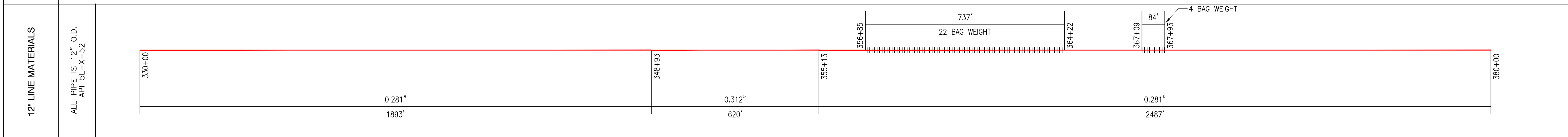
DRAWING NUMBER	ROUTE SHEET
D-26-5.92-10115-05A-A-12	005

CROSSING INFORMATION				
	XX" LINE MATERIALS ALL PIPE IS XX" O.D. API 5L-X-52 STEEL PIPE FBE COATED			
TRACT NUMBER	BL-26-195-1	BL-26-194-1	BL-26-193-1-RX	BL-26-193-1
LAND USE		CULTIVATED	GRAVEL ROAD	CULTIVATED



ENVIRONMENTAL		16162091-W9	15162091-W1	15162091-W2
---------------	--	-------------	-------------	-------------

CROSSING INFORMATION				
	<p>339+34 PROPERTY LINE</p> <p>348+82 CROP LINE</p> <p>348+12 WETLAND BOUNDARY</p> <p>352+27 CROP LINE</p> <p>352+77 WETLAND BOUNDARY</p> <p>352+93 WETLAND BOUNDARY</p> <p>354+15 ROAD R-0-W</p> <p>354+44 CL DITCH</p> <p>354+53 SECTION LINE: PROPERTY LINE</p> <p>354+57 EDGE OF ROAD</p> <p>354+71 EDGE OF ROAD</p> <p>354+92 ROAD R-0-W</p> <p>354+96 CL DITCH</p> <p>354+98 WETLAND BOUNDARY</p> <p>364+07 WETLAND BOUNDARY</p> <p>365+97 P.I. < 15'00"00" BL</p> <p>366+75 P.I. < 19'30"00" LT</p> <p>367+00 WETLAND BOUNDARY</p> <p>367+81 WETLAND BOUNDARY</p>			



LEGEND

- INTERSTATE HIGHWAY
- US HIGHWAY
- STATE HIGHWAY
- CO. STATE AID HIGHWAYS
- COUNTY ROAD
- M. P. MARKER
- AERIAL M.P. MARKER
- CIVIL TOWNSHIP LINE
- FOREIGN PIPELINE
- SECTION LINES
- ROADS
- BURIED PHONE LINE
- BURIED POWER LINE
- OVERHEAD POWER LINE
- WATER LINE
- GAS LINE
- FIBER OPTIC CABLE LINE
- PROPERTY LINE
- RAILROADS
- WATER PIPES, STREAMS, CREEKS, DITCHES
- ROCK SHIELD
- SET ON WEIGHTS
- CONCRETE COATING
- CASING
- FOAM PILLOW
- MOTOR OPERATED VALVE
- GATE VALVE
- TEE
- STOPPLE TEE
- REPAIR SLEEVE
- RECTIFIER
- WELD PLUS
- TEST LEAD

NOTES:

ENBRIDGE ENERGY # 1-800-858-5253
(L.C.) - LAND CONTRACT
RX - RAILROAD CROSSING
WX - WATER CROSSING
RX - ROAD CROSSING
LWA - LOW WET AREA
WL - WETLAND (SEE WETLAND DELINEATION DRAWINGS REPORT)
GOPHER STATE ONE-CALL 1-800-252-1166
ALL STATIONING IN TRUE (PIPE) LENGTH

FIELD BOOK	FIELD BOOK	FIELD BOOK
NO.	REFERENCE DRAWINGS	

0	AS-BUILT	2-6-12
	REVISION	DATE
		APPR.

SCALE	DATE	DRAWN	APPROVED	APPROVED
1"=200'	2-3-12	RVB	TRR	

ENBRIDGE

AS-BUILT ALIGNMENT
12" LINE 26
MP 77.2 TO MP 76.3
STA. 330+00 TO STA. 380+00
BURKE COUNTY, ND

DRAWING NUMBER	ROUTE SHEET
D-26-5.92-10115-08A-A-12	008

