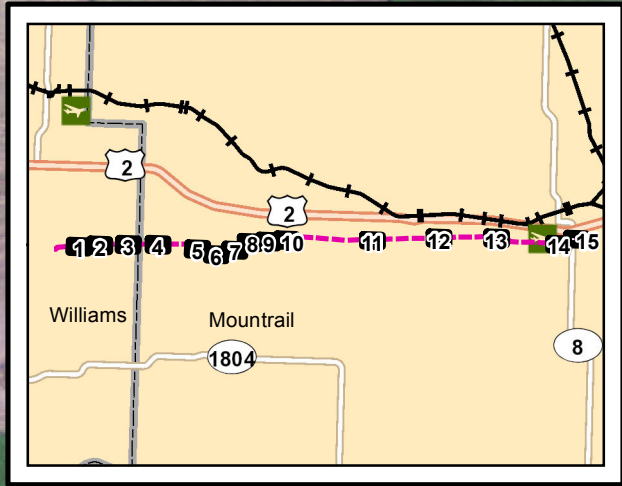
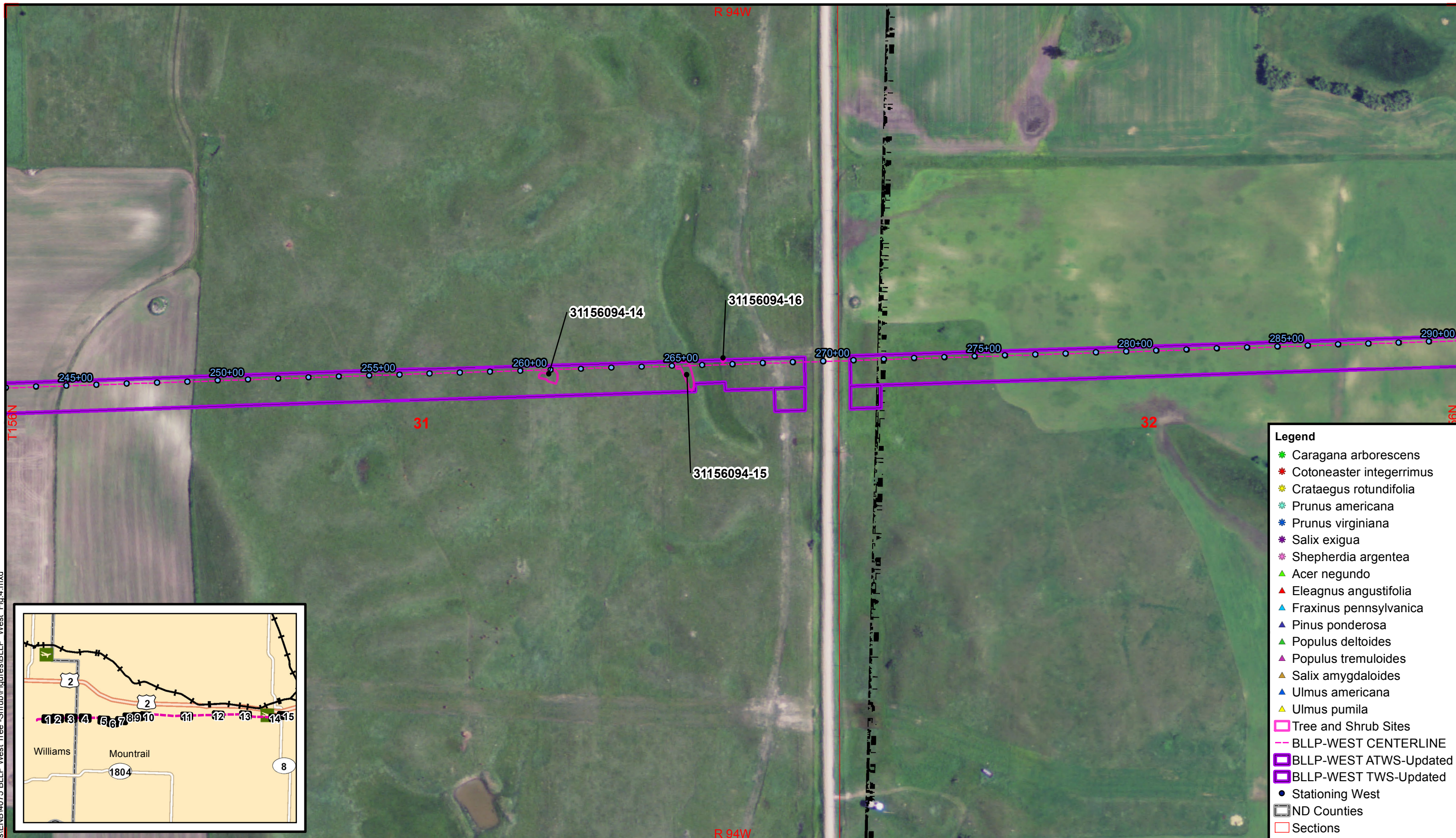
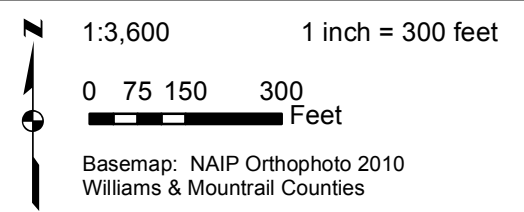


R:\projects\ENB\4075 BLLP West Tree -Shrub\Figures\BLLP West Fig.4.mxd  
August 2012

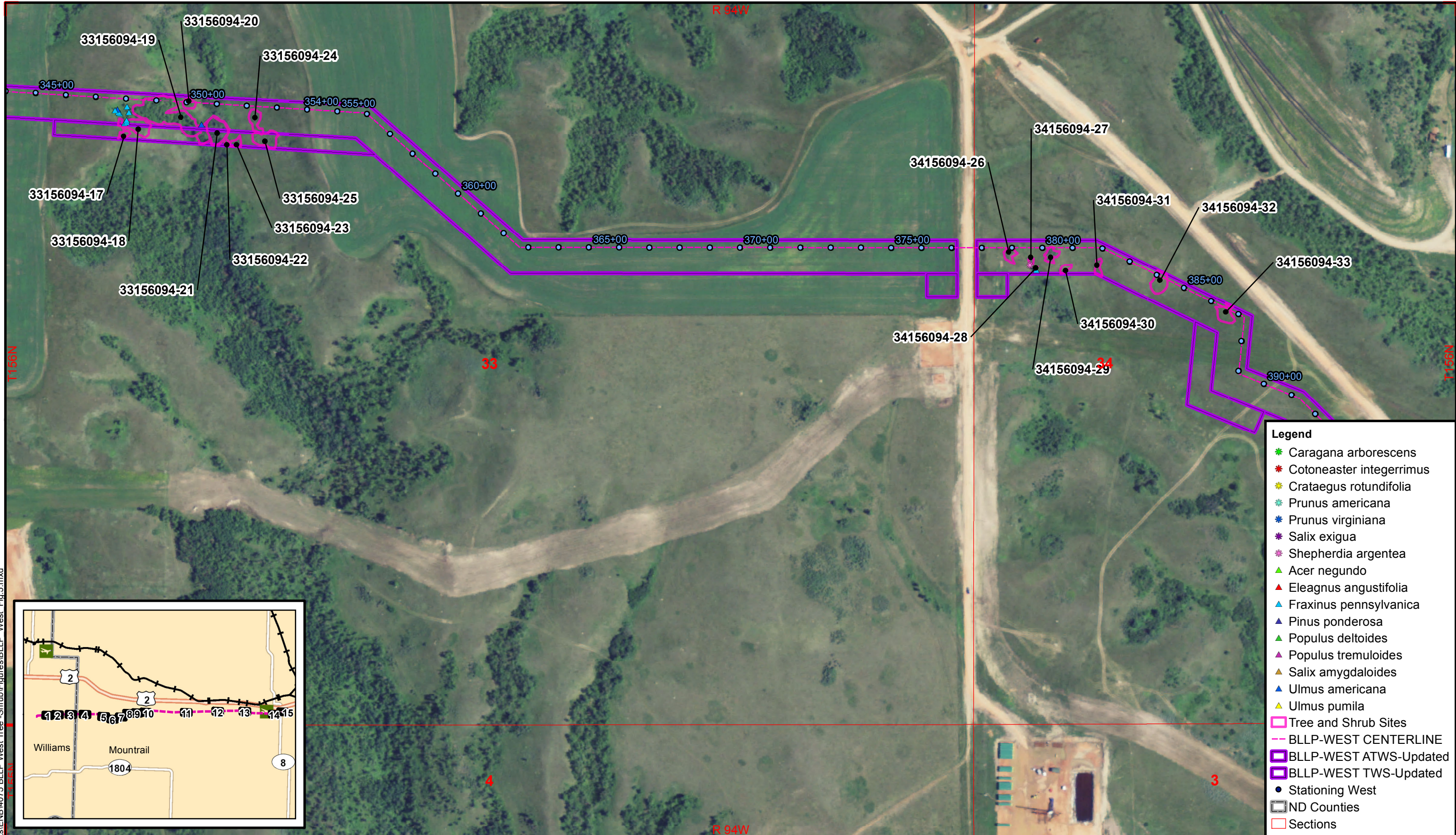


- Legend**
- Caragana arborescens
  - Cotoneaster integerrimus
  - Crataegus rotundifolia
  - Prunus americana
  - Prunus virginiana
  - Salix exigua
  - Shepherdia argentea
  - Acer negundo
  - Eleagnus angustifolia
  - Fraxinus pennsylvanica
  - Pinus ponderosa
  - Populus deltoides
  - Populus tremuloides
  - Salix amygdaloides
  - Ulmus americana
  - Ulmus pumila
  - Tree and Shrub Sites
  - BLLP-WEST CENTERLINE
  - BLLP-WEST ATWS-Updated
  - BLLP-WEST TWS-Updated
  - Stationing West
  - ND Counties
  - Sections

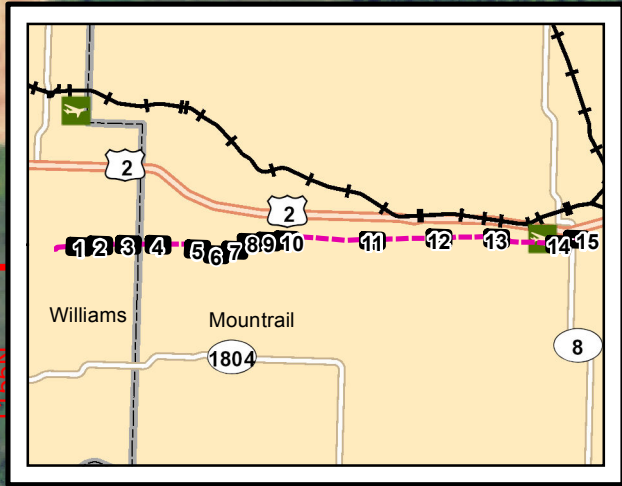


Beaver Lodge Loop Project  
(West)

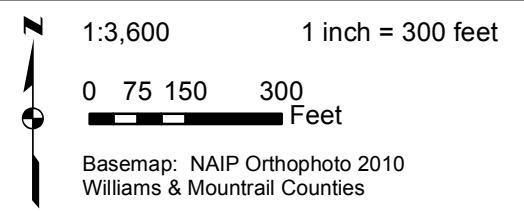
**FIGURE 4**  
Tree & Shrub Locations



- Legend**
- Caragana arborescens
  - Cotoneaster integerrimus
  - Crataegus rotundifolia
  - Prunus americana
  - Prunus virginiana
  - Salix exigua
  - Shepherdia argentea
  - ▲ Acer negundo
  - ▲ Eleagnus angustifolia
  - ▲ Fraxinus pennsylvanica
  - ▲ Pinus ponderosa
  - ▲ Populus deltoides
  - ▲ Populus tremuloides
  - ▲ Salix amygdaloides
  - ▲ Ulmus americana
  - ▲ Ulmus pumila
  - Tree and Shrub Sites
  - BLLP-WEST CENTERLINE
  - ▭ BLLP-WEST ATWS-Updated
  - ▭ BLLP-WEST TWS-Updated
  - Stationing West
  - ▭ ND Counties
  - ▭ Sections

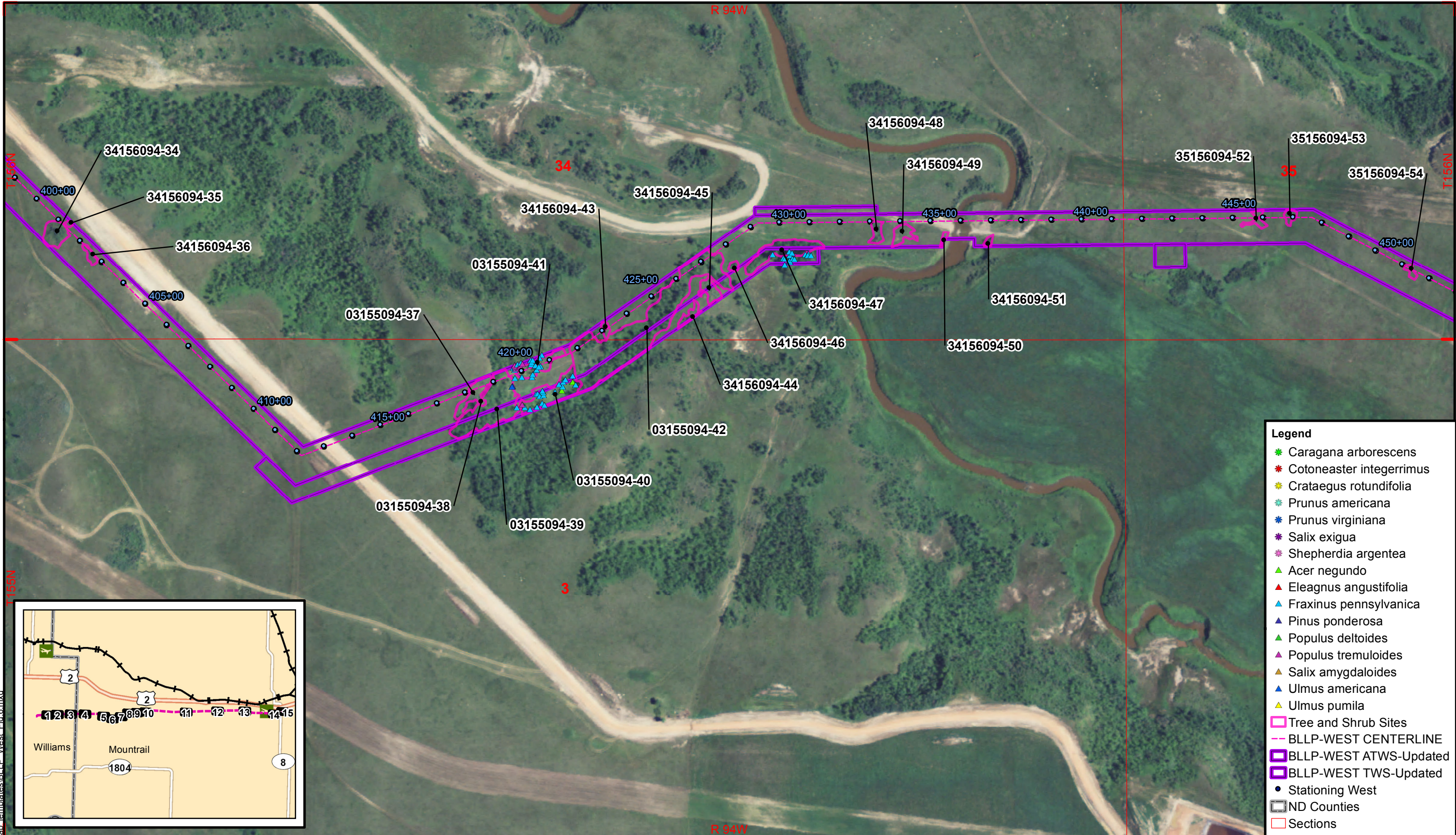


August 2012 R:\projects\ENB\4075 BLLP West Tree -Shrub\Figures\BLLP West Fig.5.mxd

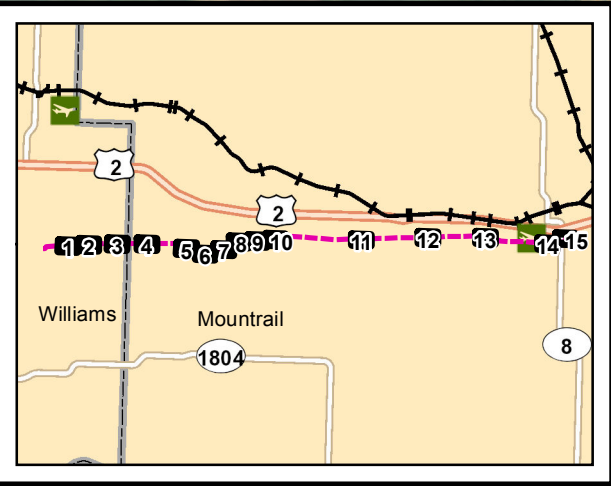


**Beaver Lodge Loop Project (West)**

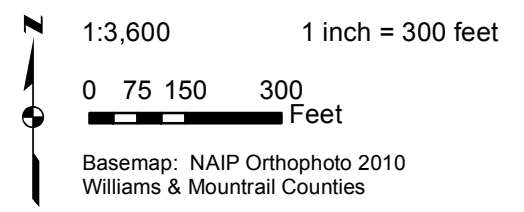
**FIGURE 5  
Tree & Shrub Locations**



- Legend**
- ★ Caragana arborescens
  - ★ Cotoneaster integerrimus
  - ★ Crataegus rotundifolia
  - ★ Prunus americana
  - ★ Prunus virginiana
  - ★ Salix exigua
  - ★ Shepherdia argentea
  - ▲ Acer negundo
  - ▲ Eleagnus angustifolia
  - ▲ Fraxinus pennsylvanica
  - ▲ Pinus ponderosa
  - ▲ Populus deltoides
  - ▲ Populus tremuloides
  - ▲ Salix amygdaloides
  - ▲ Ulmus americana
  - ▲ Ulmus pumila
  - Tree and Shrub Sites
  - BLLP-WEST CENTERLINE
  - ▭ BLLP-WEST ATWS-Updated
  - ▭ BLLP-WEST TWS-Updated
  - Stationing West
  - ▭ ND Counties
  - ▭ Sections

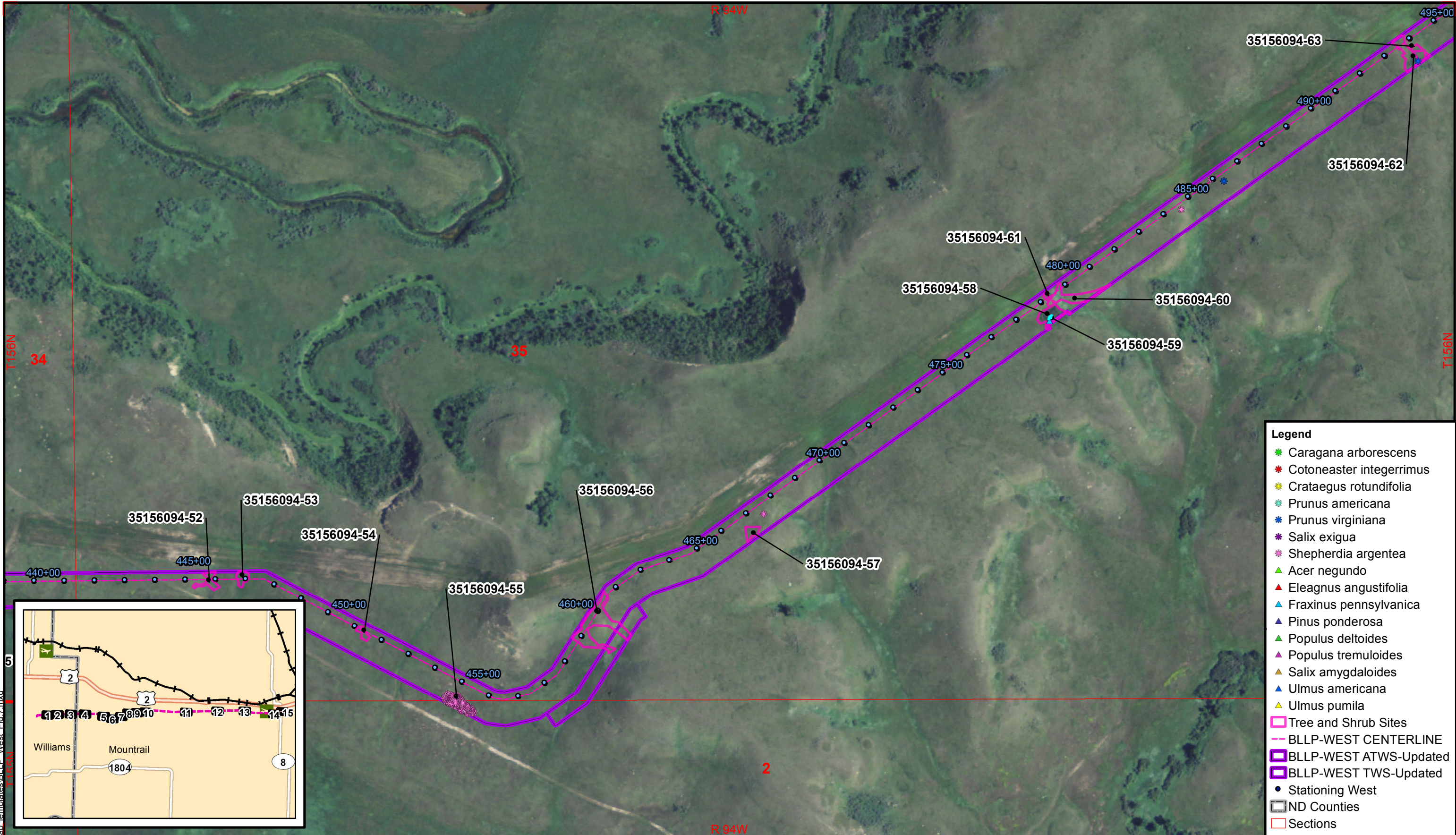


August 2012 R:\GIS\Map Templates\BLP\_West\_Fig.6.mxd

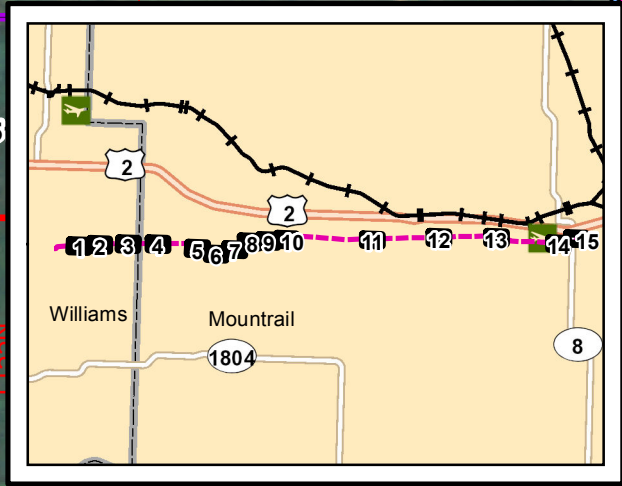


**Beaver Lodge Loop Project  
(West)**

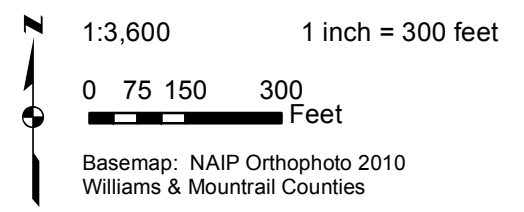
**FIGURE 6  
Tree & Shrub Locations**



- Legend**
- ★ Caragana arborescens
  - ★ Cotoneaster integerrimus
  - ★ Crataegus rotundifolia
  - ★ Prunus americana
  - ★ Prunus virginiana
  - ★ Salix exigua
  - ★ Shepherdia argentea
  - ▲ Acer negundo
  - ▲ Eleagnus angustifolia
  - ▲ Fraxinus pennsylvanica
  - ▲ Pinus ponderosa
  - ▲ Populus deltoides
  - ▲ Populus tremuloides
  - ▲ Salix amygdaloides
  - ▲ Ulmus americana
  - ▲ Ulmus pumila
  - Tree and Shrub Sites
  - BLLP-WEST CENTERLINE
  - ▭ BLLP-WEST ATWS-Updated
  - ▭ BLLP-WEST TWS-Updated
  - Stationing West
  - ▭ ND Counties
  - ▭ Sections



August 2012 R:\GIS\Map Templates\BLP\_West\_Fig 7.mxd T156N

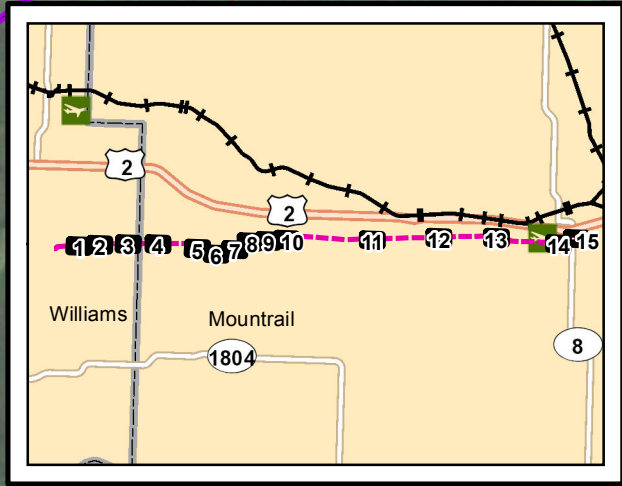


**Beaver Lodge Loop Project  
(West)**

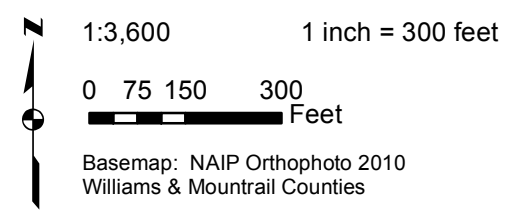
**FIGURE 7  
Tree & Shrub Locations**



- Legend**
- ★ Caragana arborescens
  - ★ Cotoneaster integerrimus
  - ★ Crataegus rotundifolia
  - ★ Prunus americana
  - ★ Prunus virginiana
  - ★ Salix exigua
  - ★ Shepherdia argentea
  - ▲ Acer negundo
  - ▲ Eleagnus angustifolia
  - ▲ Fraxinus pennsylvanica
  - ▲ Pinus ponderosa
  - ▲ Populus deltoides
  - ▲ Populus tremuloides
  - ▲ Salix amygdaloides
  - ▲ Ulmus americana
  - ▲ Ulmus pumila
  - Tree and Shrub Sites
  - BLLP-WEST CENTERLINE
  - ▭ BLLP-WEST ATWS-Updated
  - ▭ BLLP-WEST TWS-Updated
  - Stationing West
  - ▭ ND Counties
  - ▭ Sections

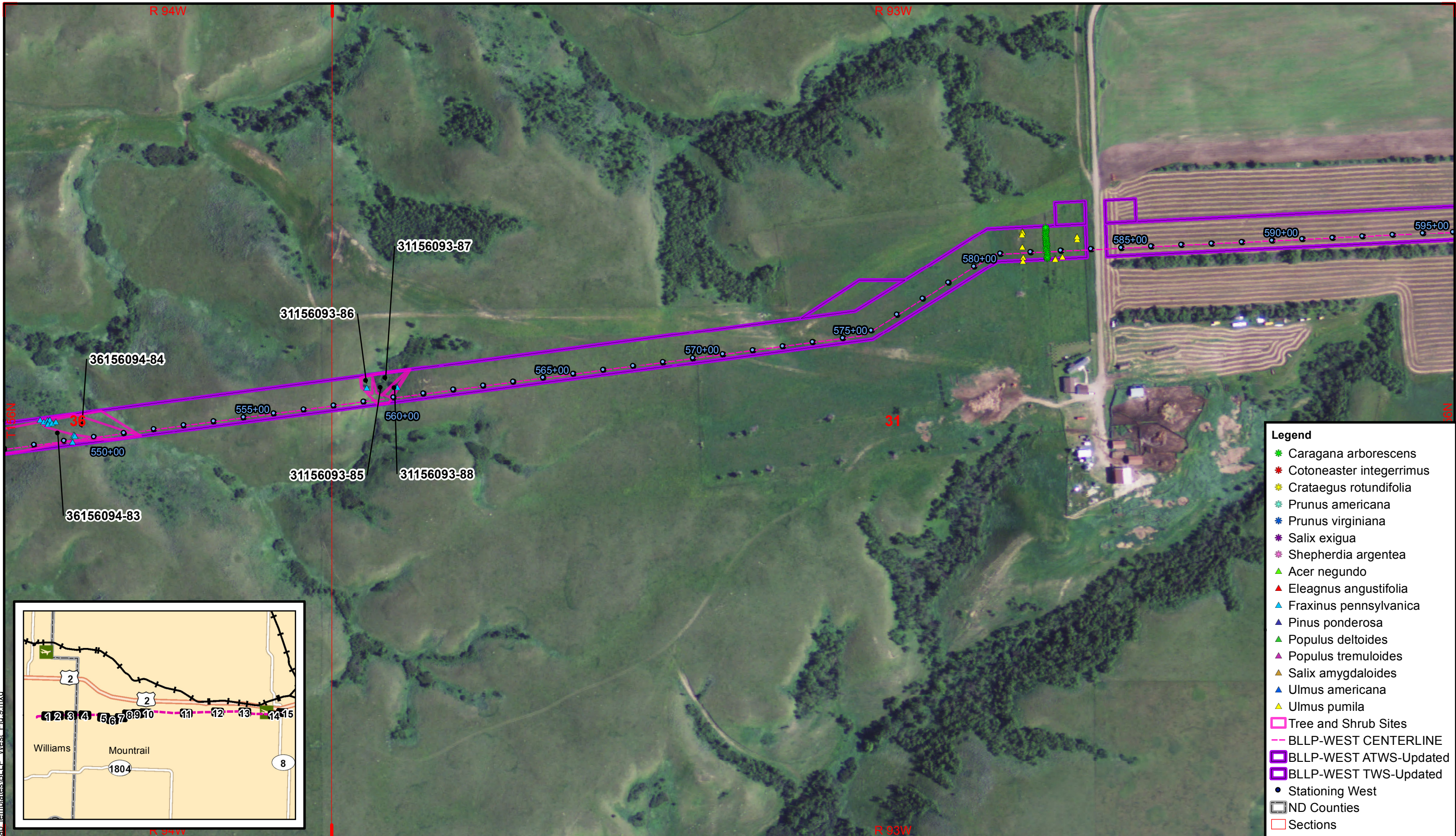


August 2012 R:\projects\ENB\4075 BLLP West Tree - Shrub\Figures\BLLP West Fig 8.mxd

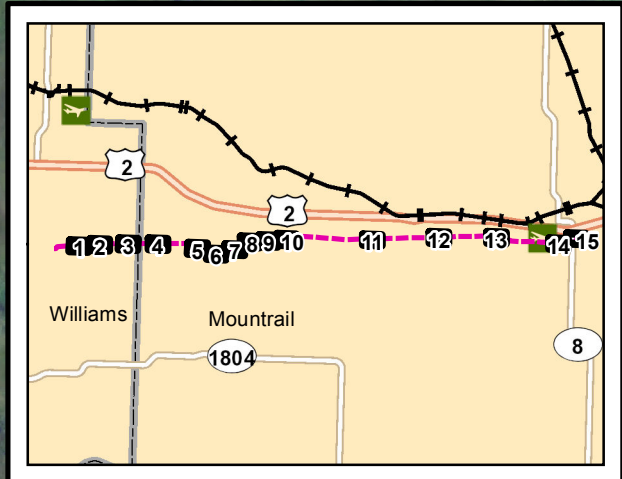


**Beaver Lodge Loop Project  
(West)**

**FIGURE 8  
Tree & Shrub Locations**



- Legend**
- ★ Caragana arborescens
  - ★ Cotoneaster integerrimus
  - ★ Crataegus rotundifolia
  - ★ Prunus americana
  - ★ Prunus virginiana
  - ★ Salix exigua
  - ★ Shepherdia argentea
  - ▲ Acer negundo
  - ▲ Eleagnus angustifolia
  - ▲ Fraxinus pennsylvanica
  - ▲ Pinus ponderosa
  - ▲ Populus deltoides
  - ▲ Populus tremuloides
  - ▲ Salix amygdaloides
  - ▲ Ulmus americana
  - ▲ Ulmus pumila
  - Tree and Shrub Sites
  - BLLP-WEST CENTERLINE
  - ▭ BLLP-WEST ATWS-Updated
  - ▭ BLLP-WEST TWS-Updated
  - Stationing West
  - ▭ ND Counties
  - ▭ Sections



August 2012 R:\GIS\Map Templates\BL\_LP\_West\_Fig 9.mxd

**Carlson  
McCain**  
ENVIRONMENTAL • ENGINEERING • SURVEYING  
600 South 2nd Street, Suite 105, Bismarck, North Dakota 58504  
www.carlsonmccain.com

1:3,600      1 inch = 300 feet

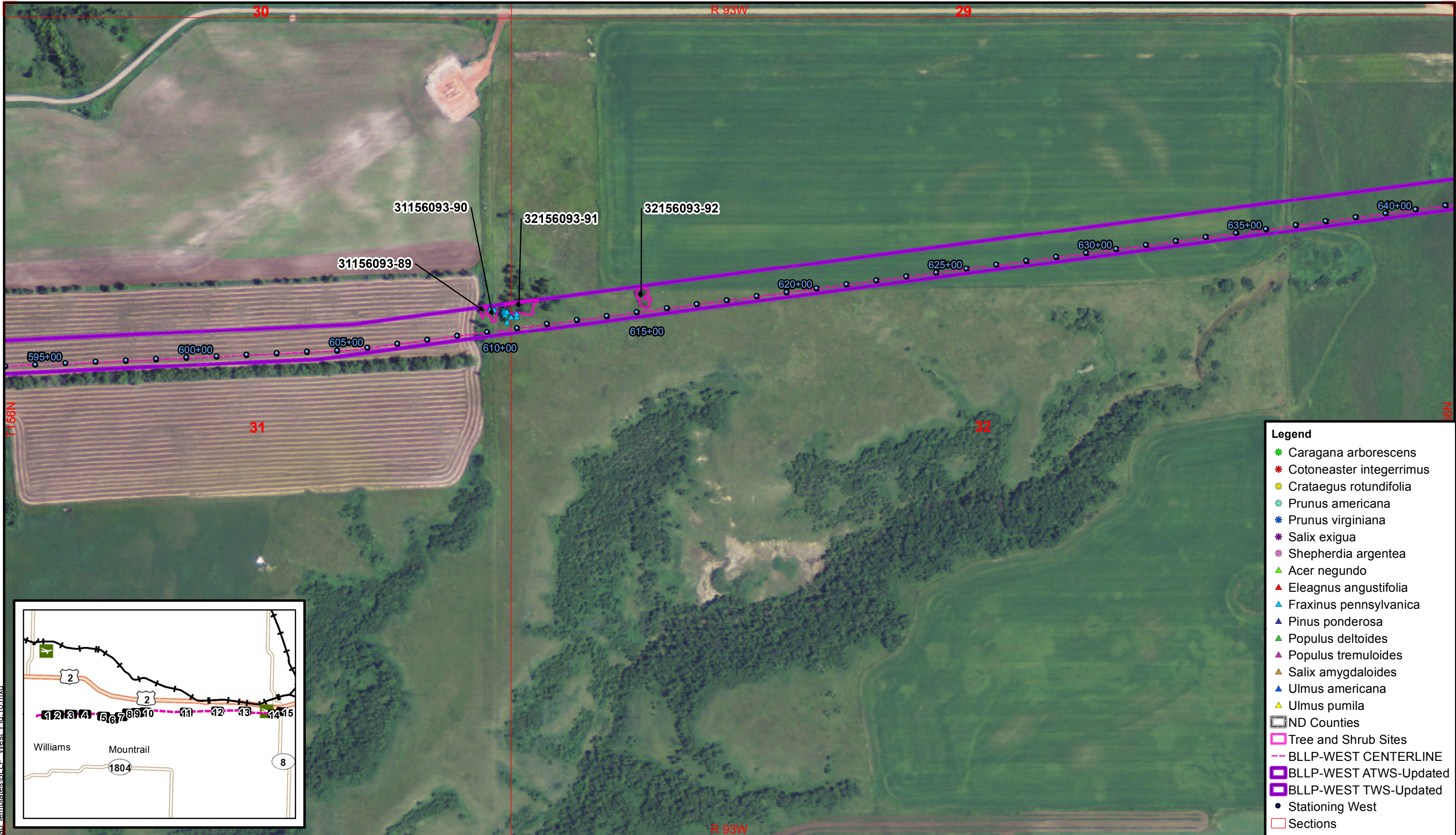
0 75 150 300  
Feet

Basemap: NAIP Orthophoto 2010  
Williams & Mountrail Counties

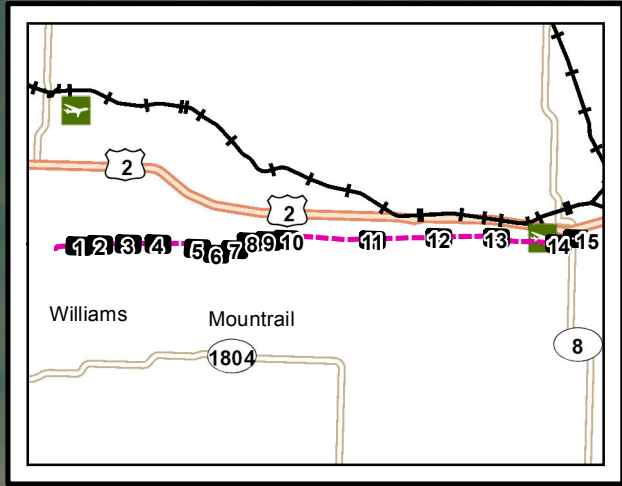


**Beaver Lodge Loop Project  
(West)**

**FIGURE 9  
Tree & Shrub Locations**



- Legend**
- ★ Caragana arborescens
  - ★ Cotoneaster integerrimus
  - ★ Crataegus rotundifolia
  - ★ Prunus americana
  - ★ Prunus virginiana
  - ★ Salix exigua
  - ★ Shepherdia argentea
  - ▲ Acer negundo
  - ▲ Eleagnus angustifolia
  - ▲ Fraxinus pennsylvanica
  - ▲ Pinus ponderosa
  - ▲ Populus deltoides
  - ▲ Populus tremuloides
  - ▲ Salix amygdaloides
  - ▲ Ulmus americana
  - ▲ Ulmus pumila
  - ND Counties
  - Tree and Shrub Sites
  - BLLP-WEST CENTERLINE
  - ▭ BLLP-WEST ATWS-Updated
  - ▭ BLLP-WEST TWS-Updated
  - Stationing West
  - Sections



August 2012 R:\GIS\Map Templates\BLLP\_West\_Fig\_10.mxd

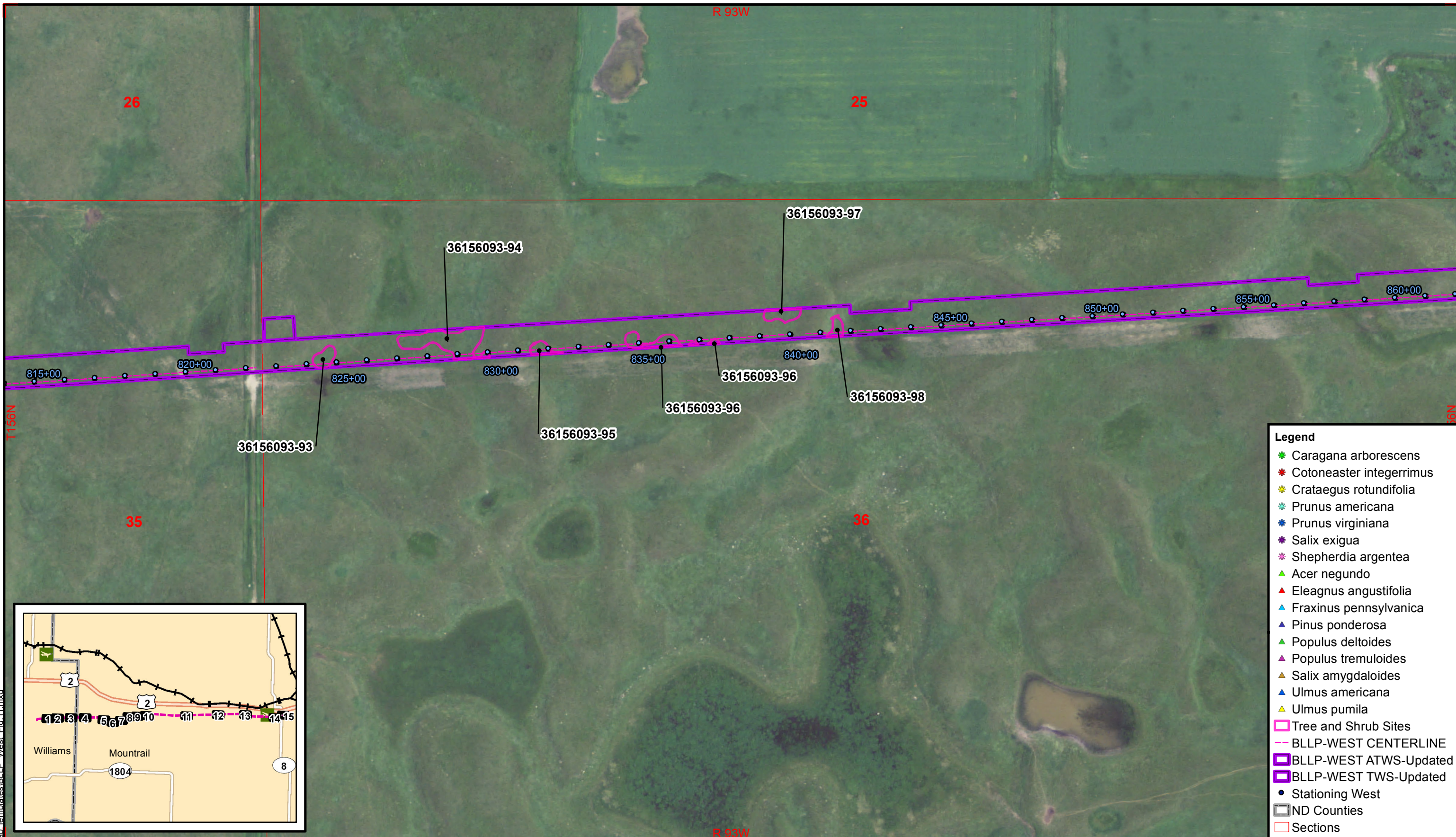


1:3,600 1 inch = 300 feet  
 0 75 150 300 Feet  
 Basemap: NAIP Orthophoto 2010  
 Williams & Mountrail Counties

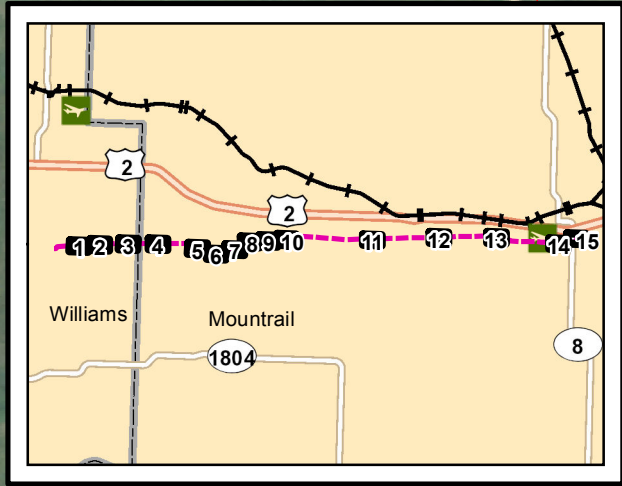


**Beaver Lodge Loop Project  
(West)**

**FIGURE 10  
Tree & Shrub Locations**



- Legend**
- ★ Caragana arborescens
  - ★ Cotoneaster integerrimus
  - ★ Crataegus rotundifolia
  - ★ Prunus americana
  - ★ Prunus virginiana
  - ★ Salix exigua
  - ★ Shepherdia argentea
  - ▲ Acer negundo
  - ▲ Eleagnus angustifolia
  - ▲ Fraxinus pennsylvanica
  - ▲ Pinus ponderosa
  - ▲ Populus deltoides
  - ▲ Populus tremuloides
  - ▲ Salix amygdaloides
  - ▲ Ulmus americana
  - ▲ Ulmus pumila
  - Tree and Shrub Sites
  - BLLP-WEST CENTERLINE
  - ▭ BLLP-WEST ATWS-Updated
  - ▭ BLLP-WEST TWS-Updated
  - Stationing West
  - ▭ ND Counties
  - ▭ Sections



August 2012 R:\GIS\Map Templates\BLLP\_West\_Fig.11.mxd

**Carlson  
McCain**  
ENVIRONMENTAL • ENGINEERING • SURVEYING  
600 South 2nd Street, Suite 105, Bismarck, North Dakota 58504  
www.carlsonmccain.com

1:3,600      1 inch = 300 feet

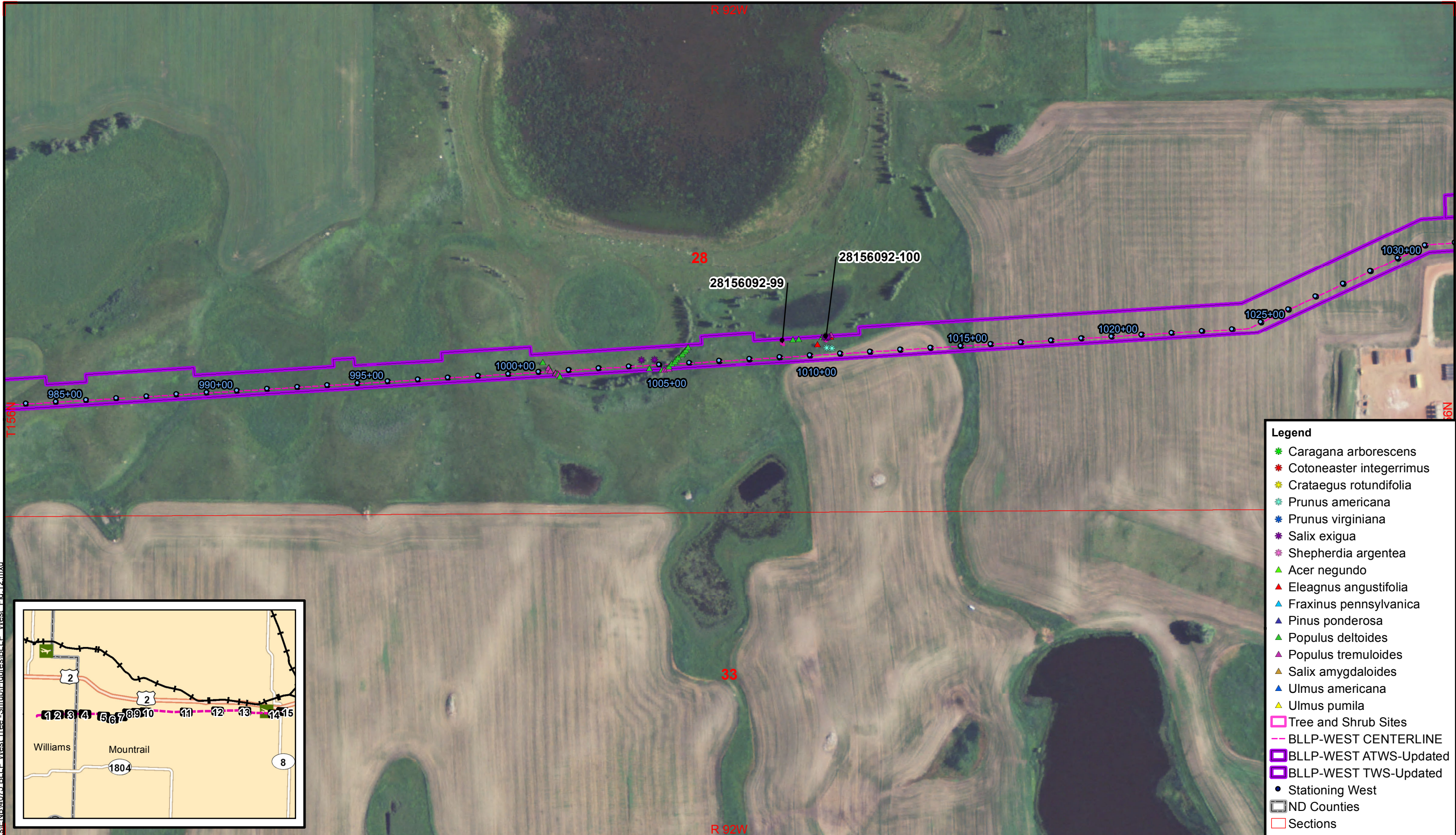
0 75 150 300  
Feet

Basemap: NAIP Orthophoto 2010  
Williams & Mountrail Counties

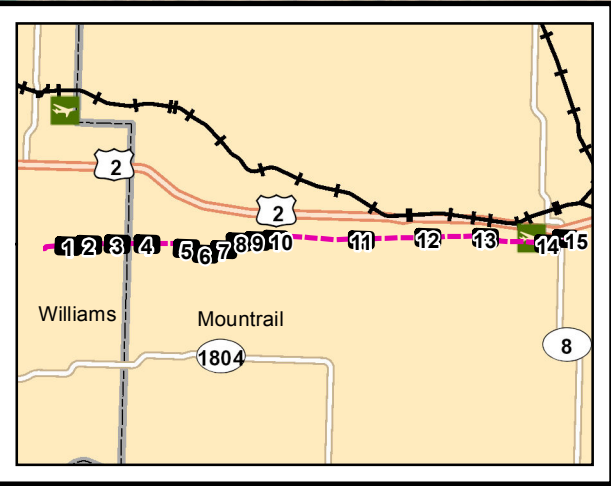


**Beaver Lodge Loop Project  
(West)**

**FIGURE 11  
Tree & Shrub Locations**

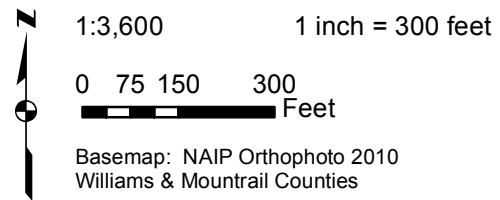


- Legend**
- ★ Caragana arborescens
  - ✳ Cotoneaster integerrimus
  - ✳ Crataegus rotundifolia
  - ✳ Prunus americana
  - ✳ Prunus virginiana
  - ✳ Salix exigua
  - ✳ Shepherdia argentea
  - ▲ Acer negundo
  - ▲ Eleagnus angustifolia
  - ▲ Fraxinus pennsylvanica
  - ▲ Pinus ponderosa
  - ▲ Populus deltoides
  - ▲ Populus tremuloides
  - ▲ Salix amygdaloides
  - ▲ Ulmus americana
  - ▲ Ulmus pumila
  - Tree and Shrub Sites
  - BLLP-WEST CENTERLINE
  - ▭ BLLP-WEST ATWS-Updated
  - ▭ BLLP-WEST TWS-Updated
  - Stationing West
  - ▭ ND Counties
  - ▭ Sections



R:\projects\ENB\4075 BLLP West Tree - Shrub\EI\oures\BLLP West - Fig-12.mxd

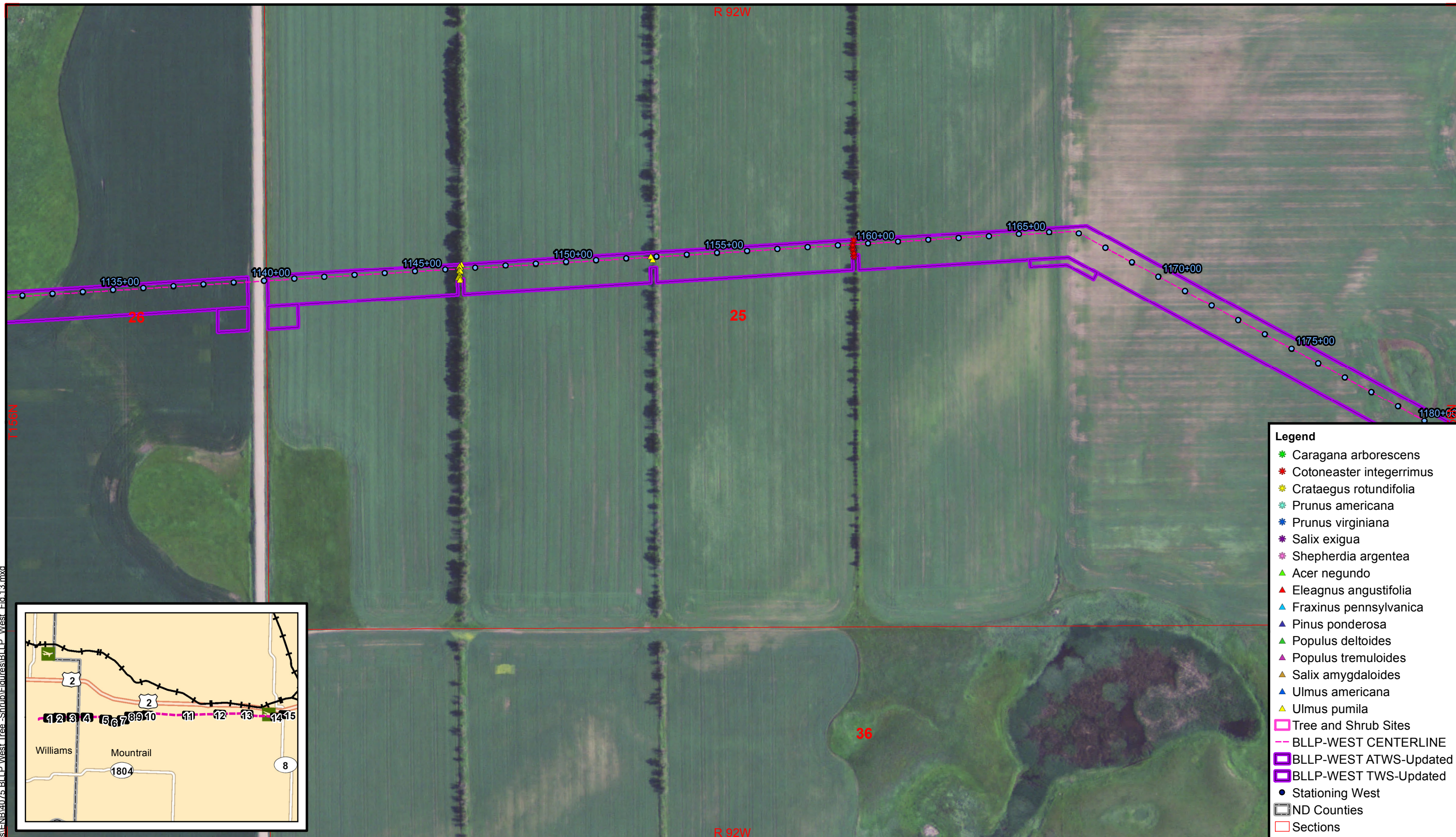
August 2012



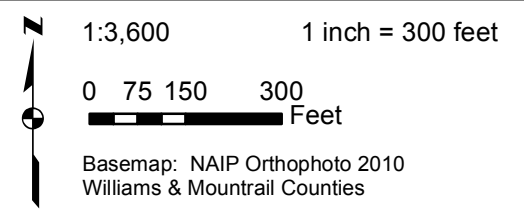
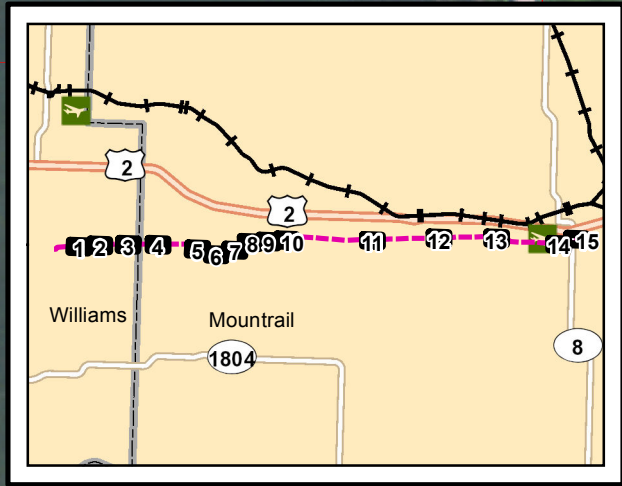
**Beaver Lodge Loop Project  
(West)**

**FIGURE 12  
Tree & Shrub Locations**

R:\projects\ENR\4075 BLLP West Tree -Shrub\Figures\BLLP West Fig.13.mxd  
August 2012

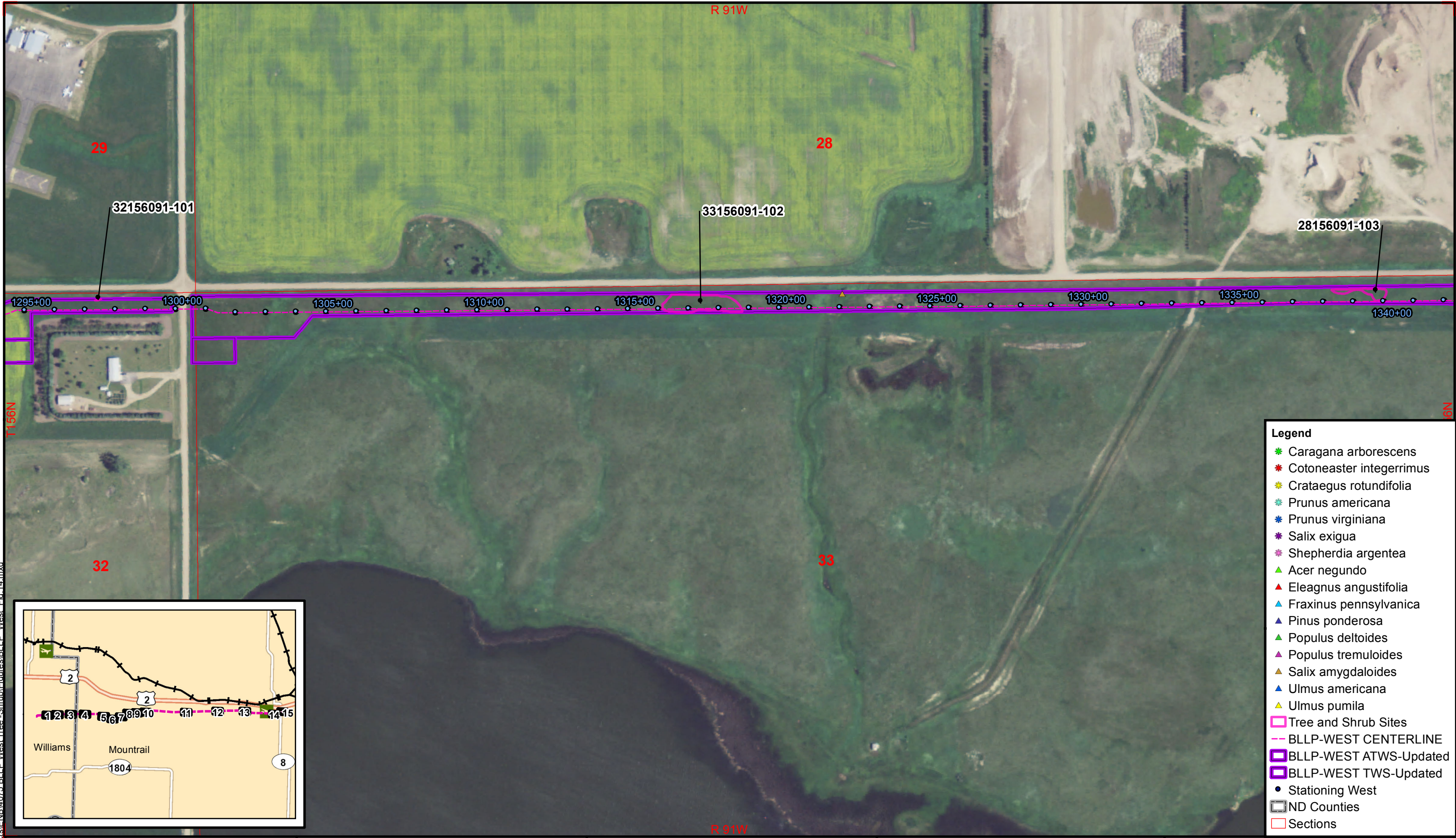


- Legend**
- Caragana arborescens
  - Cotoneaster integerrimus
  - Crataegus rotundifolia
  - Prunus americana
  - Prunus virginiana
  - Salix exigua
  - Shepherdia argentea
  - Acer negundo
  - Eleagnus angustifolia
  - Fraxinus pennsylvanica
  - Pinus ponderosa
  - Populus deltoides
  - Populus tremuloides
  - Salix amygdaloides
  - Ulmus americana
  - Ulmus pumila
  - Tree and Shrub Sites
  - BLLP-WEST CENTERLINE
  - BLLP-WEST ATWS-Updated
  - BLLP-WEST TWS-Updated
  - Stationing West
  - ND Counties
  - Sections

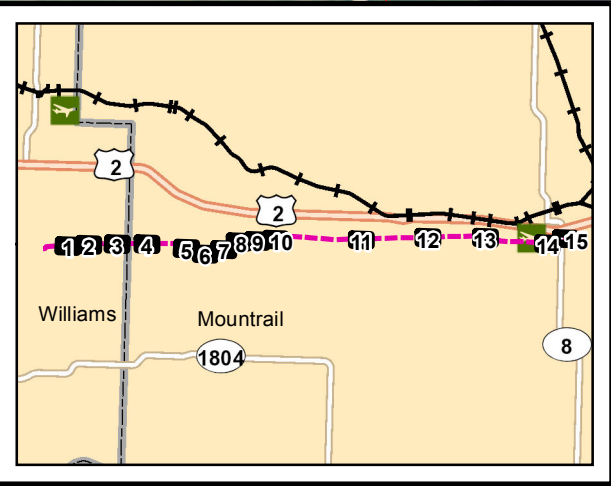


Beaver Lodge Loop Project  
(West)

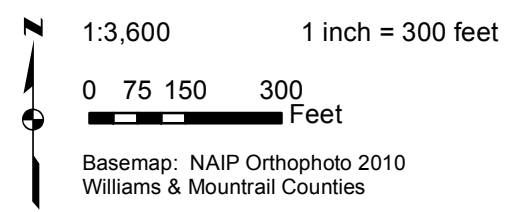
**FIGURE 13**  
Tree & Shrub Locations



- Legend**
- ★ Caragana arborescens
  - ★ Cotoneaster integerrimus
  - ★ Crataegus rotundifolia
  - ★ Prunus americana
  - ★ Prunus virginiana
  - ★ Salix exigua
  - ★ Shepherdia argentea
  - ▲ Acer negundo
  - ▲ Eleagnus angustifolia
  - ▲ Fraxinus pennsylvanica
  - ▲ Pinus ponderosa
  - ▲ Populus deltoides
  - ▲ Populus tremuloides
  - ▲ Salix amygdaloides
  - ▲ Ulmus americana
  - ▲ Ulmus pumila
  - Tree and Shrub Sites
  - BLLP-WEST CENTERLINE
  - BLLP-WEST ATWS-Updated
  - BLLP-WEST TWS-Updated
  - Stationing West
  - ND Counties
  - Sections



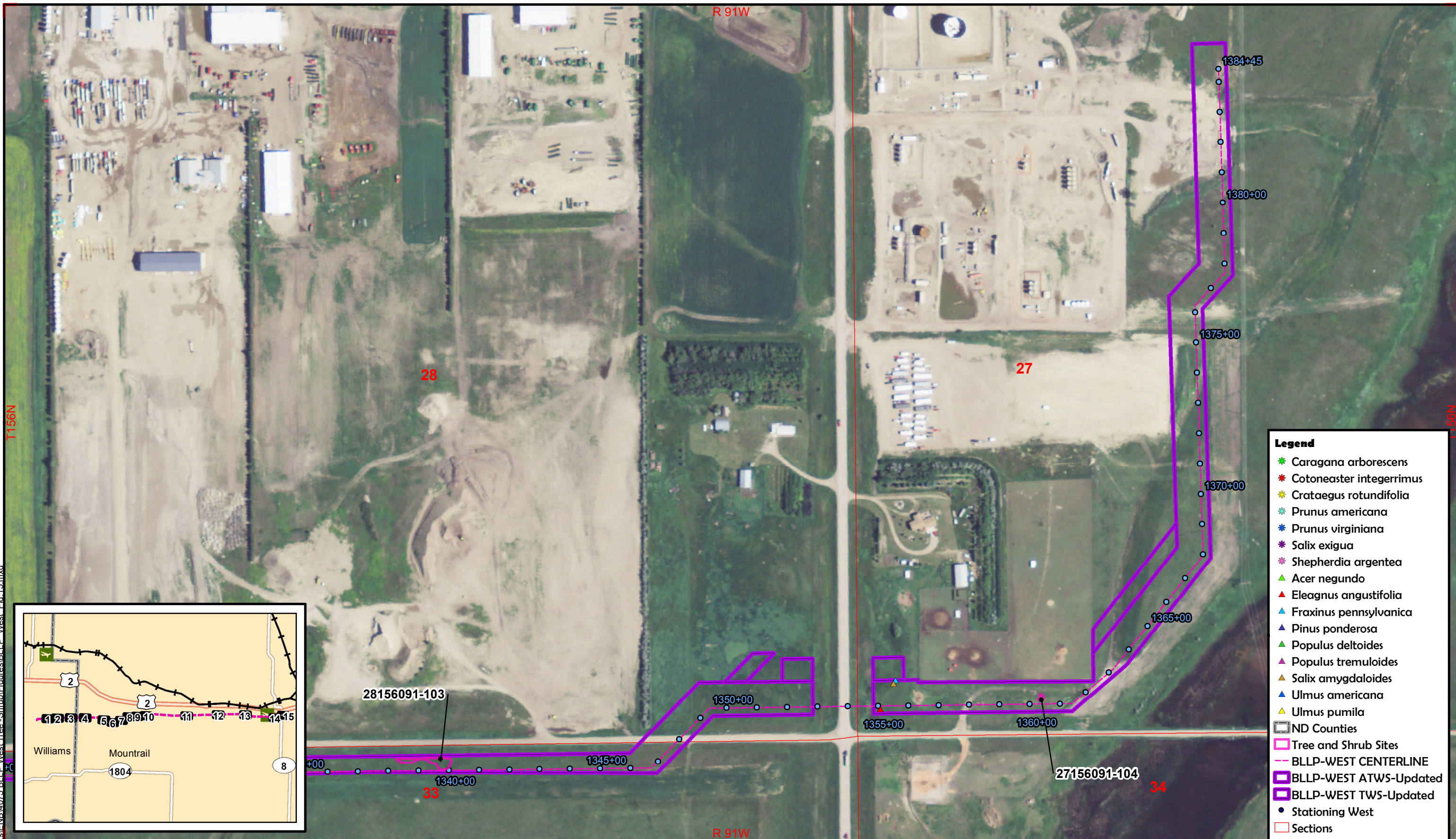
R:\projects\ENB\4075 BLLP West Tree - Shrub\Figures\BLLP West Fig 14.mxd August 2012



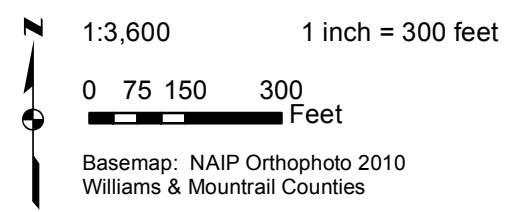
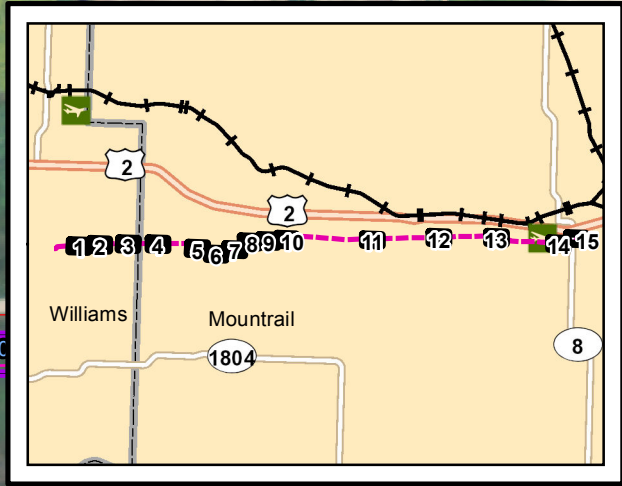
**Beaver Lodge Loop Project  
(West)**

**FIGURE 14  
Tree & Shrub Locations**

August 2012 R:\projects\ENB\4075 BLP West Tree - Shrub\Drawings\BLP West - Fig-15.mxd



- Legend**
- ★ Caragana arborescens
  - ★ Cotoneaster integerrimus
  - ★ Crataegus rotundifolia
  - ★ Prunus americana
  - ★ Prunus virginiana
  - ★ Salix exigua
  - ★ Shepherdia argentea
  - ▲ Acer negundo
  - ▲ Eleagnus angustifolia
  - ▲ Fraxinus pennsylvanica
  - ▲ Pinus ponderosa
  - ▲ Populus deltoides
  - ▲ Populus tremuloides
  - ▲ Salix amygdaloides
  - ▲ Ulmus americana
  - ▲ Ulmus pumila
  - ND Counties
  - Tree and Shrub Sites
  - BLLP-WEST CENTERLINE
  - ▭ BLLP-WEST ATWS-Updated
  - ▭ BLLP-WEST TWS-Updated
  - Stationing West
  - Sections



Beaver Lodge Loop Project  
(West)

**FIGURE 15**  
Tree & Shrub Locations

**EXHIBIT C**

**Table 3: Landowner Approval and Tree/Shrub Mitigation Plans**

**Table 3  
Landowner Approval and Tree Shrub Mitigation Plans**

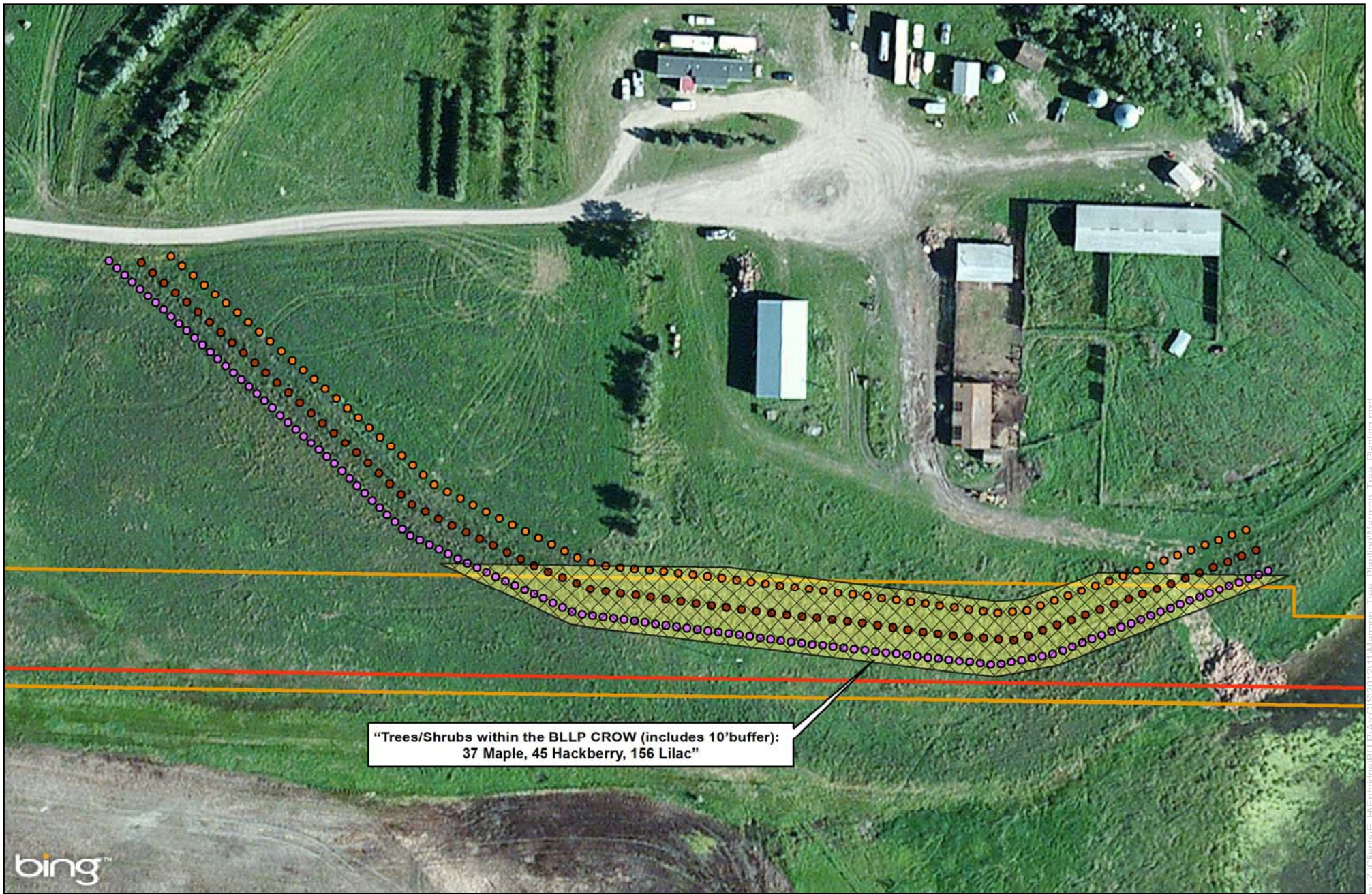
<b>Tract</b>	<b>Trees Shrubs Removed<sup>1</sup></b>	<b>Invasive Species</b>	<b>Mitigation Requirement<sup>2</sup></b>	<b>Trees Shrubs Mitigation Plan Planting Requirements<sup>3</sup></b>	<b>Location (Tract or Alt. Location)<sup>4</sup></b>
<b><i>BLLP West</i></b>					
BB-82-11	4 Siberian Peashrubs	Yes	2:1 Replacement	8 native shrubs	Alt
BB-82-18/ BB-82-19-1	82 Green Ash trees	No	2:1 Replacement	164 Green Ash trees	Tract
	1 American Elm tree	No	2:1 Replacement	2 American Elm trees	
BB-82-20-3/ BB-82-21-1	68 Green Ash trees	No	2:1 Replacement	160 evergreen trees	Tract
	5 Quaking Aspen trees	No	2:1 Replacement		
	6 American Elm trees	No	2:1 Replacement		
BB-82-23-1	1 Green Ash tree	No	2:1 Replacement	2 Green Ash trees	Tract
BB-82-25-1	2 Green Ash trees	No	2:1 Replacement	4 Green Ash trees	Alt
BB-82-26	23 Green Ash trees	No	2:1 Replacement	46 Green Ash trees	Alt
	1 American Elm tree	No	2:1 Replacement	2 American Elm trees	
BB-82-27	2 Green Ash trees	No	2:1 Replacement	4 Green Ash trees	Tract
BB-82-29-1	21 Siberian Peashrubs	Yes	2:1 Replacement	42 native shrubs	Tract
	2 Green Ash trees	No	2:1 Replacement	4 Green Ash trees	
	11 Siberian Elm trees	Yes	2:1 Replacement	22 native trees	
BB-82-30	77 Green Ash trees	No	2:1 Replacement	154 Green Ash trees	Tract
BB-82-43	37 Maple trees	No	2:1 Replacement	74 Maple trees	Tract
	45 Hackberry trees	No	2:1 Replacement	90 Hackberry trees	Tract
	156 Lilac Shrubs	No	2:1 Replacement	312 Lilac Shrubs	Tract
BB-82-45	4 Eastern Cottonwood trees	No	2:1 Replacement	8 Eastern Cottonwood trees	Tract
BB-82-46-1	1 Eastern Cottonwood tree	No	2:1 Replacement	2 Eastern Cottonwood trees	Alt
	1 Quaking Aspen tree	No	2:1 Replacement	2 Quaking Aspen trees	
	2 Russian Olive trees	Yes	2:1 Replacement	4 native trees	
BB-82-51	5 Common Cotoneaster Shrubs	No	2:1 Replacement	10 Common Cotoneaster Shrubs	Alt
	1 Ponderosa Pine tree	No	2:1 Replacement	2 Ponderosa Pine trees	
	14 Siberian Elm trees	Yes	2:1 Replacement	28 native trees	

**Table 3  
Landowner Approval and Tree Shrub Mitigation Plans**

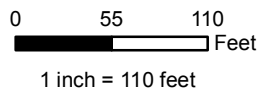
<b>Tract</b>	<b>Trees Shrubs Removed<sup>1</sup></b>	<b>Invasive Species</b>	<b>Mitigation Requirement<sup>2</sup></b>	<b>Trees Shrubs Mitigation Plan Planting Requirements<sup>3</sup></b>	<b>Location (Tract or Alt. Location)<sup>4</sup></b>
<b><i>BLLP East</i></b>					
BB-82-123	1 Native Siberian Elm Tree	No	2:1 Replacement	2 Siberian Elm Trees	Alt Location
BB-82-127-1	1 Native Cottonwood Tree	No	2:1 Replacement	2 Cottonwood Trees	Alt Location
	15 Native Willow (Peachleaf) Trees	No	2:1 Replacement	30 Willow (Peachleaf) Trees	
BB-82-113	1 Native Russian Olive Tree	Yes	2:1 Replacement	2 Trees - similar height and canopy suitable for the mitigation area	Alt Location
BB-82-96	2 Native Russian Olive Trees	Yes	2:1 Replacement	4 Trees - similar height and canopy suitable for the mitigation area	Alt Location
BB-82-81	1 Elm Tree (type not known)	No	2:1 Replacement	2 Elm Trees - suitable for the mitigation area	Alt Location
BB-82-67	2 Native Russian Olive Trees	Yes	2:1 Replacement	4 Trees - similar height and canopy suitable for the mitigation area	Alt Location
BB-82-68	2 Russian Olive Trees (1 Planted and 1 Native )	Yes	2:1 Replacement	4 Trees - similar height and canopy suitable for the mitigation area	Tract
	2 Planted European Cotoneaster Shrubs	Yes	2:1 Replacement	4 Shrubs - similar height and canopy suitable for the mitigation area	
	8 Planted Elm Trees (Siberian)	No	2:1 Replacement	16 Elms (Siberian)	
	3 Planted Buffalo Berry Shrubs	No	2:1 Replacement	6 Buffalo Berry Shrubs	
<b><i>Stanley Station</i></b>					
BB-82-60-7	4 Siberian Elm Trees	Yes	2:1 Replacement	8 Trees - similar height and canopy suitable for the mitigation area	Alt Location
	5 Native Boxelder Trees	No	2:1 Replacement	10 Boxelder Trees	
	2 Cottonwood Trees	No	2:1 Replacement	4 Cottonwood Trees	
	1 Planted Russian Olive Tree	Yes	2:1 Replacement	2 Trees - similar height and canopy suitable for the mitigation area	
	5 Chokecherry shrubs	No	2:1 Replacement	10 Chokecherry shrubs	
<sup>1</sup> Does not include shrubs that will regenerate naturally (i.e., Native Topsoil Preserved and Replaced (see item no. 5 in ND PSC Tree and Shrub Mitigation Specifications, Case No. PU-10-613)). <sup>2</sup> Tree replacement shall be on a 2 to 1 basis with 2-year-old saplings. Shrub replacement shall be on a 2 to 1 basis with stem cuttings (see item no. 11 in ND PSC Tree and Shrub Mitigation Specifications, Case No. PU-10-613). <sup>3</sup> Replacement species should be non-invasive native tree/shrub of similar height and canopy (or as approved by the NDFS) suitable for the mitigation area (see Section 4.0 of Tree and Shrub Inventory Reports included as Exhibit B). <sup>4</sup> Landowners shall be given the option of having replacement trees/shrubs planted off the right-of-way on the landowner's property or waiving that requirement in writing and allowing those replacement trees/shrubs to be planted at alternative locations (see item no. 13 in ND PSC Tree and Shrub Mitigation Specifications, Case No. PU-10-613).					

**EXHIBIT D**

**Tract BB-82-43 Tree Planting Figure**



bing™



**Enbridge Pipelines (North Dakota) LLC**  
**Beaver Lodge Loop Project**  
 BB-82-43 Tree Planting  
 Mountrail County, North Dakota

- Maple Tree
- Hackberry Tree
- Lilac Shrub (each point represents 2 plants)
- Centerline
- Construction ROW



TREE AND SHRUB PLANTING WORKSHEET

McIntosh County, ND

Name Gary Mariens

Address 8790 53rd St NW, Ross ND, 58776

Phone # (701)629-9955

Plan by KK

17-Feb-10

Plan Sketch Map

Quarter SW 1/4

Section 29

Plan approved by:

*Wayne Marmor*  
PO Box 51  
ROSS

Township 156

Range 92

Date:



Farmstead	▼
Fallow	▼
Yes	▼
Fair	▼

<--Type of Planting-->

New	▼
EQP	▼

NA

<--Site Preparation

<--Cost share Program

<--Site protected from livestock?

<--Condition of site at planting time

Windward row to roads or bldgs.-> 200 feet (200' on N & W, and 100' on S & E)

Spacing between rows 15 feet

Soil Mapping Unit

236	▼	WILLIAMS
3	8	1

Windbreak Suitability Groups

Planted by: T.J.

Remarks / Management (Weed Control)

Date:

Weed barrier fabric to be installed.

Field No.	Planned Length	Planted Length	Planted Width	Planted Acres	Row #	Primary Species of Tree or Shrub	Type or Variety	Alternating Species	Average Spacing in row	Number Planted (est)	Number Planted (actual)	Primary Species Suitability	Alternating Species Suitability	Compatibility	
	1000		15	0.34	1	Maple, Amur	▼	silver	▼	12	83	0	suitable	0	compatible
	1000		15	0.34	2	Hackberry	▼		▼	12	83	0	0	0	compatible
	1000		15	0.34	3	Lilac, Common	▼		▼	4	250	0	suitable	0	compatible
			0	0.00	4		▼		▼		0	0	0	0	compatible
			0	0.00	5		▼		▼		0	0	0	0	compatible
			0	0.00	6		▼		▼		0	0	0	0	compatible
			0	0.00	7		▼		▼		0	0	0	0	compatible
			0	0.00	8		▼		▼		0	0	0	0	compatible
			0	0.00	9		▼		▼		0	0	0	0	compatible
			0	0.00	10		▼		▼		0	0	0	0	compatible
			0	0.00	11		▼		▼		0	0	0	0	compatible
			0	0.00	12		▼		▼		0	0	0	0	compatible
			0	0.00	13		▼		▼		0	0	0	0	compatible
			0	0.00	14		▼		▼		0	0	0	0	compatible
			0	0.00	15		▼		▼		0	0	0	0	compatible
			0	0.00	16		▼		▼		0	0	0	0	compatible
	3000	0	45	1.03				<Totals>		417	0				

*2955 sq-ft*

7017553635 P 2/2

7016272815 >>

Pharmacy 1406

2012-10-09 15:27

**EXHIBIT E**

**Landowner Waivers and Contact Records**

Enbridge Pipelines (North Dakota) LLC (Enbridge)  
Beaver Lodge Loop Project (BLLP)  
Tree Mitigation Waiver (Case No. PU-10-613)

Date 10-9-12

Landowner Name Thomas Haustveit BLLP Tract No. BB-82-11

Description of tree/shrub mitigation activities 4 Siberian Peashrubs removed  
replant 2:1 = Replant 8 native shrubs

Under the North Dakota Public Service Commission (Case No. PU-10-613) Tree and Shrub Mitigation Specifications, landowners are given the option of having replacement trees/shrubs planted off the right-of-way on the landowner's property or waiving that requirement in writing and allowing those replacement trees/shrubs to be planted at alternative locations.

I Thomas Haustveit am the landowner of BLLP Tract No. BB-82-11 and I hereby waive the requirement of having replacement trees/shrubs planted off the right-of-way on my property.

I acknowledge that I understand the waiver described in this document. Waiver is made to the maximum extent permissible under applicable law. I acknowledge that I have signed this document under my own free will.

Signature Thomas Haustveit Date 10-9-12

Printed Name Thomas Haustveit Phone 701-641-6691

Street Address 5948 101st Rd NW Zip 58852

Tioga, ND 58852

**Enbridge Pipelines (North Dakota) LLC (Enbridge)  
Beaver Lodge Loop Project (BLLP)  
Tree Mitigation Waiver (Case No. PU-10-613)**

Date 9-28-12

Landowner Name Jerry Zunich BLLP Tract No. BB-82-18+82-19-1

Description of tree/shrub mitigation activities Removed 82 Green Ash Trees 2:1 Replaced

Replant 164 Green Ash Trees; Removed 1 American Elm 2:1 Replacement, Replant 2 American Elms

Under the North Dakota Public Service Commission (Case No. PU-10-613) Tree and Shrub Mitigation Specifications, landowners are given the option of having replacement trees/shrubs planted off the right-of-way on the landowner's property or waiving that requirement in writing and allowing those replacement trees/shrubs to be planted at alternative locations.

I \_\_\_\_\_ am the landowner of BLLP Tract No. \_\_\_\_\_ and I hereby waive the requirement of having replacement trees/shrubs planted off the right-of-way on my property.

I acknowledge that I understand the waiver described in this document. Waiver is made to the maximum extent permissible under applicable law. I acknowledge that I have signed this document under my own free will.

Signature  Date 9-28-12

Printed Name Jerry Zunich Phone 701-572-6877

Street Address 1221 park place Zip 58801

Williston, ND





1707 North 9th Street  
PO Box 5523  
Bismarck, ND 58506-5523  
Phone: (701) 328-2800  
Fax: (701) 328-3650



[www.land.nd.gov](http://www.land.nd.gov)

Lance D. Gaebe, Commissioner

October 1, 2012

TREVOR SEELY - CONTRACT RIGHT-OF-WAY AGENT  
ENBRIDGE PIPELINES (ND) LLC  
1409 HAMMOND AVE  
SUPERIOR WI 54880

Re: Tree/shrub replacement on ND School Trust Land due to Enbridge Pipeline's Beaver Lodge Loop Project (ROW#5666), (NDPSC case # PU-10-613, tracts BLLP 26 and 25-1)

Dear Trevor:

North Dakota School Trust lands are almost exclusively native grassland prairie and rather than plant trees/shrubs on the prairie we prefer the trees/shrubs required to be replaced on this pipeline construction project be routed through the tree/shrub planting programs that the ND Game and Fish Department or ND Forest Service administer. If Enbridge is willing to contact one or both of these agencies and assure us that the trees/shrubs meant for School Trust land are instead given to one of these agencies for use in their programs then the Department of Trust Lands agrees to waive the right to have them planted on School Trust land. Please contact Mike Haupt at 701-328-2800 if you have questions.

Sincerely,



Lance Gaebe  
Commissioner

g:\support\lrs\lrs - bj\hptlrs bj.doc

**Enbridge Pipelines (North Dakota) LLC (Enbridge)  
Beaver Lodge Loop Project (BLLP)  
Tree Mitigation Waiver (Case No. PU-10-613)**

Date 9-26-2012

Landowner Name Gene Brown BLLP Tract No. BB-82-27

Description of tree/shrub mitigation activities Replanting 4 Green ash  
Trees

Under the North Dakota Public Service Commission (Case No. PU-10-613) Tree and Shrub Mitigation Specifications, landowners are given the option of having replacement trees/shrubs planted off the right-of-way on the landowner's property or waiving that requirement in writing and allowing those replacement trees/shrubs to be planted at alternative locations.

I \_\_\_\_\_ am the landowner of BLLP Tract No. \_\_\_\_\_ and I hereby waive the requirement of having replacement trees/shrubs planted off the right-of-way on my property.

I acknowledge that I understand the waiver described in this document. Waiver is made to the maximum extent permissible under applicable law. I acknowledge that I have signed this document under my own free will.

Signature Gene Brown Date 9/26/2012

Printed Name Gene Brown Phone 701-255-3252

Street Address 9561 61ST NW Zip 58776

**Enbridge Pipelines (North Dakota) LLC (Enbridge)  
Beaver Lodge Loop Project (BLLP)  
Tree Mitigation Waiver (Case No. PU-10-613)**

Date 9-26-2012

Landowner Name Gene Brown BLLP Tract No. BB-29-1

Description of tree/shrub mitigation activities Replant 42 Native Shrubs, 4 green  
Ash trees, & 22 Native trees.

Under the North Dakota Public Service Commission (Case No. PU-10-613) Tree and Shrub Mitigation Specifications, landowners are given the option of having replacement trees/shrubs planted off the right-of-way on the landowner's property or waiving that requirement in writing and allowing those replacement trees/shrubs to be planted at alternative locations.

I \_\_\_\_\_ am the landowner of BLLP Tract No. \_\_\_\_\_ and I hereby waive the requirement of having replacement trees/shrubs planted off the right-of-way on my property.

I acknowledge that I understand the waiver described in this document. Waiver is made to the maximum extent permissible under applicable law. I acknowledge that I have signed this document under my own free will.

Signature Gene Brown Date 9/26/2012

Printed Name Gene Brown Phone 701-755-3259

Street Address 9561 61ST NW Zip 58776

**Enbridge Pipelines (North Dakota) LLC ("Enbridge")  
Beaver Lodge Loop Project (BLLP)  
Tree Mitigation Waiver (Case No. PU-10-613)**

Date 9-24-12

Landowner Name Shawn Iwen BLLP Tract No. BB-82-30

Description of tree/shrub mitigation activities Replant 154 Green  
Ash Trees

Under the North Dakota Public Service Commission (Case No. PU-10-613) Tree and Shrub Mitigation Specifications, landowners have the option of:

- Planting replacement trees/shrubs off the right-of-way on the landowner's property; or
- Planting replacement trees/shrubs at alternate locations at Enbridge's discretion

Please indicate your selection by marking the appropriate box above.

I, \_\_\_\_\_, am the landowner of BLLP Tract No. \_\_\_\_\_. I hereby waive the requirement of planting replacement trees/shrubs off the right-of-way on my property.

I understand the terms described herein. I voluntarily sign this document.

Signature Shawn Iwen Date 9-24-12

Printed Name SHAWN IWEN Phone 701-628-1184

Street Address 208 N MAIN Zip 58781  
208 N Main, Stanley, ND 58781

**Enbridge Pipelines (North Dakota) LLC (Enbridge)  
Beaver Lodge Loop Project (BLLP)  
Tree Mitigation Waiver (Case No. PU-10-613)**

Date 9-28-12

Landowner Name Wayne Marmen BLLP Tract No. BB-82-43

Description of tree/shrub mitigation activities \_\_\_\_\_

Under the North Dakota Public Service Commission (Case No. PU-10-613) Tree and Shrub Mitigation Specifications, landowners are given the option of having replacement trees/shrubs planted off the right-of-way on the landowner's property or waiving that requirement in writing and allowing those replacement trees/shrubs to be planted at alternative locations.

I \_\_\_\_\_ am the landowner of BLLP Tract No. \_\_\_\_\_ and I hereby waive the requirement of having replacement trees/shrubs planted off the right-of-way on my property.

I acknowledge that I understand the waiver described in this document. Waiver is made to the maximum extent permissible under applicable law. I acknowledge that I have signed this document under my own free will.

Signature Wayne Marmen Date 9-28-12

Printed Name Wayne Marmen Phone 629-0223

Street Address Po Box 83, Stanley ND Zip 58784

**Enbridge Pipelines (North Dakota) LLC ("Enbridge")  
Beaver Lodge Loop Project (BLLP)  
Tree Mitigation Waiver (Case No. PU-10-613)**

Date 9-25-12

Landowner Name Scott & Nancy Meiers BLLP Tract No. BB-82-45

Description of tree/shrub mitigation activities Replace 4 Eastern Cottonwood

Trees with 8 Eastern Cottonwood trees.

Under the North Dakota Public Service Commission (Case No. PU-10-613) Tree and Shrub Mitigation Specifications, landowners have the option of:

- Planting replacement trees/shrubs off the right-of-way on the landowner's property; or
- Planting replacement trees/shrubs at alternate locations at Enbridge's discretion

Please indicate your selection by marking the appropriate box above.

I, Scott Meiers, am the landowner of BLLP Tract No. BB-82-45. I hereby waive the requirement of planting replacement trees/shrubs off the right-of-way on my property.

I understand the terms described herein. I voluntarily sign this document.

Signature Scott Meiers Date 9-25-12

Printed Name Scott Meiers Phone 701-755-3344

Street Address 8707 62nd St. NW. Zip 58776

**Enbridge Pipelines (North Dakota) LLC ("Enbridge")  
Beaver Lodge Loop Project (BLLP)  
Tree Mitigation Waiver (Case No. PU-10-613)**

Date 9-25-12

Landowner Name Stanley Community Hospital BLLP Tract No. BB-82-46-1

Description of tree/shrub mitigation activities 1 Cotton wood, 1 Quaking  
Aspen, 2 Russian trees

Under the North Dakota Public Service Commission (Case No. PU-10-613) Tree and Shrub Mitigation Specifications, landowners have the option of:

- Planting replacement trees/shrubs off the right-of-way on the landowner's property; or
- Planting replacement trees/shrubs at alternate locations at Enbridge's discretion

Please indicate your selection by marking the appropriate box above.

I, Derald Hoover am the landowner of BLLP Tract No. BB-46-1. I hereby waive the requirement of planting replacement trees/shrubs off the right-of-way on my property.

I understand the terms described herein. I voluntarily sign this document.

Signature Derald Hoover Date 9/25/2012

Printed Name Derald Hoover Phone 701-628-2242

Street Address PO Box 399 Zip 58784

Enbridge Pipelines (North Dakota) LLC (Enbridge)  
Beaver Lodge Loop Project (BLLP)  
Tree Mitigation Waiver (Case No. PU-10-613)

Date 10-9-2012

Landowner Name Trulson BLLP Tract No. BB-82-57

Description of tree/shrub mitigation activities replant 10 common Cotoneaster shrub,  
replant 2 Ponderosa Pine trees ; Replant 20 native trees

Under the North Dakota Public Service Commission (Case No. PU-10-613) Tree and Shrub Mitigation Specifications, landowners are given the option of having replacement trees/shrubs planted off the right-of-way on the landowner's property or waiving that requirement in writing and allowing those replacement trees/shrubs to be planted at alternative locations.

I Curtis Trulson am the landowner of BLLP Tract No. BB-82-57 and I hereby waive the requirement of having replacement trees/shrubs planted off the right-of-way on my property.

I acknowledge that I understand the waiver described in this document. Waiver is made to the maximum extent permissible under applicable law. I acknowledge that I have signed this document under my own free will.

Signature Curtis Trulson Date 10-9-2012

Printed Name Curtis Trulson Phone 701-689-1430

Street Address Box 116 Zip 58776

**Enbridge Pipelines (North Dakota) LLC (Enbridge)  
Beaver Lodge Loop Project (BLLP)  
Tree Mitigation Waiver (Case No. PU-10-613)**

Date 12/14/2012

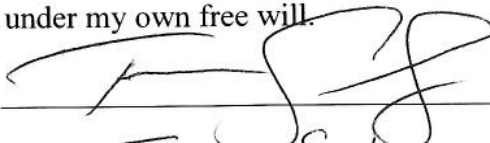
Landowner Name Enbridge Pipelines (North Dakota) LLC  
BLLP Tract No. BB-82-60-7

Description of tree/shrub mitigation activities 24 trees & 10 shrubs

Under the North Dakota Public Service Commission (Case No. PU-10-613) Tree and Shrub Mitigation Specifications, landowners are given the option of having replacement trees/shrubs planted off the right-of-way on the landowner's property or waiving that requirement in writing and allowing those replacement trees/shrubs to be planted at alternative locations.

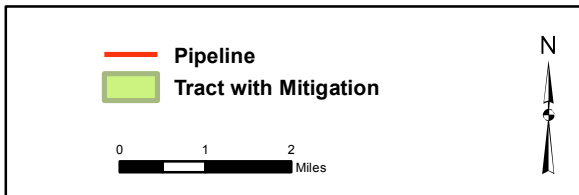
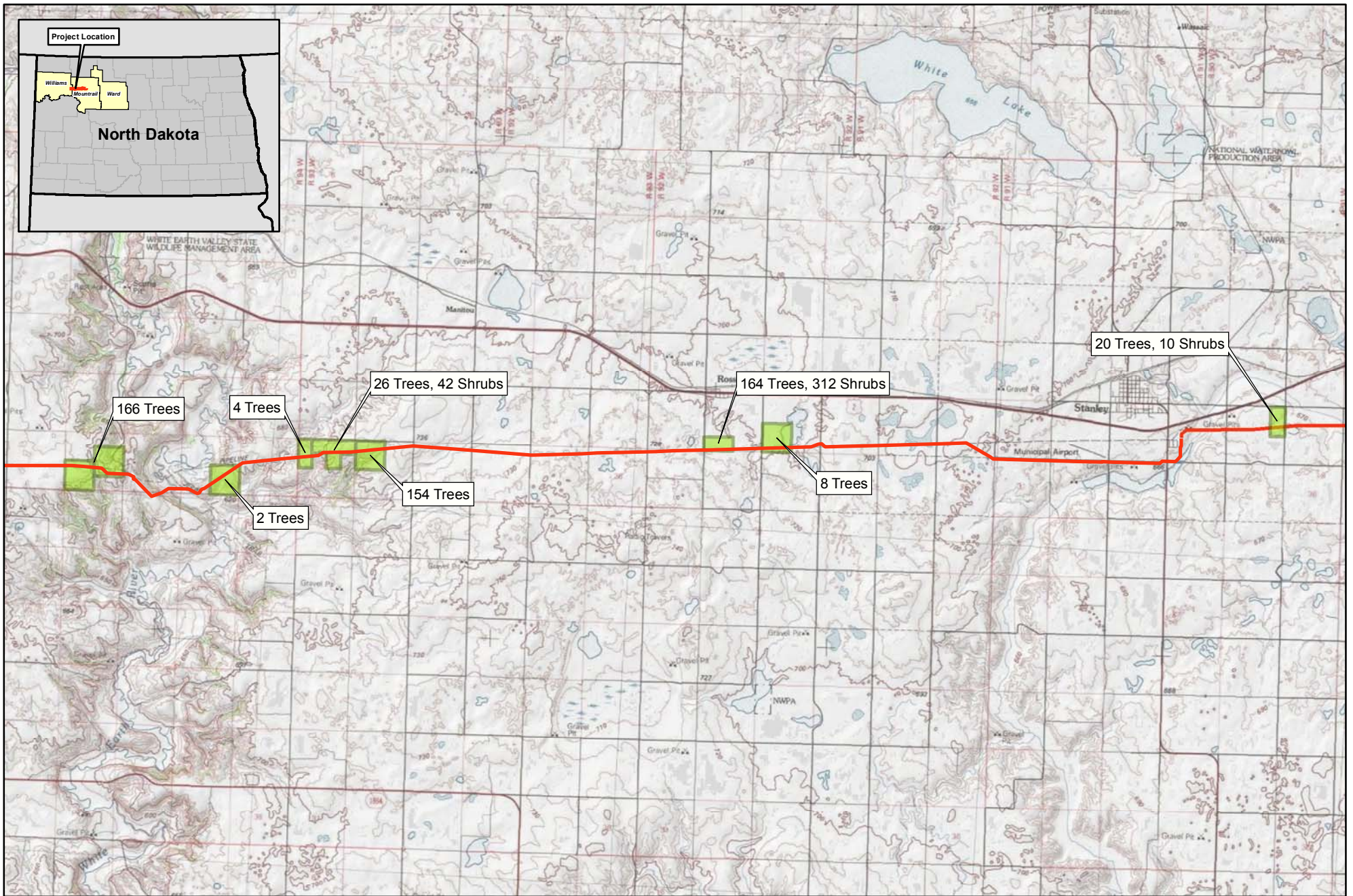
I Trevor Seely am a representative for the landowner of BLLP Tract No. BB-82-60-7 and I hereby waive the requirement of having replacement trees/shrubs planted off the right-of-way on my property.

I acknowledge that I understand the waiver described in this document. Waiver is made to the maximum extent permissible under applicable law. I acknowledge that I have signed this document under my own free will.

Signature  Date 12/14/12  
Printed Name Trevor Seely Phone 701-509-5546  
Street Address 1409 Hammond Ave, Superior, WI Zip 54880

**EXHIBIT F**

**Tree Mitigation Figure: Mitigation on Landowner's Property**



**Enbridge Pipelines (North Dakota) LLC**  
**Beaver Lodge Loop Project**  
**Tree Mitigation on the Landowner's Property**



**EXHIBIT G**

**Letter from the North Dakota Forest Service - February 1, 2013**



## NORTH DAKOTA FOREST SERVICE

"To care for, protect and improve forest and natural resources to enhance the quality of life for present and future generations."

February 1, 2013

Angela Ronayne, PE  
Merjent, Tractor Works Building  
800 Washington Avenue North  
Suite 315  
Minneapolis, MN 55401

Dear Ms. Ronayne,

Attached for your consideration is a draft program concept outline for the North Dakota Mitigation Tree Planting Partnership Program between the North Dakota Forest Service and Enbridge. The January 29, 2013, document outlines a proposed program to replace trees and shrubs to comply with the North Dakota Public Service Commission mitigation requirements. This three-year program would be financed through an award from Enbridge to the North Dakota Forest Service. The project ending date is anticipated to be December 31, 2015. The estimated number of trees/shrubs to be planted is 1,529 including all the anticipated plantings, as well as additional stock to offset mortality.

The award to finance this program would be deposited in the Trees for North Dakota Trust Fund, a special fund in the state treasury. The award would be designated for this Mitigation Tree Planting Partnership Program and managed by the North Dakota Forest Service. The proposed program cost per tree/shrub is \$9.00. The program would be initiated by the North Dakota Forest Service and its natural resource partners and private vendors upon the receipt of the tree planting mitigation payment.

Thank you for the opportunity to assist Enbridge with its mitigation tree planting obligations set forth by the North Dakota Public Service Commission. We look forward to discussing the draft program concept outline with you, your staff and environmental consultants. Please do not hesitate to contact our office if you need further assistance or information. Thank you again for considering our services.

Sincerely,

A handwritten signature in black ink that reads "Larry A. Kotchman".

Larry A. Kotchman  
State Forester

Enclosure