



Enbridge Energy,
Limited Partnership
Suite 3300, 1100 Louisiana
Houston, Texas 77002
USA

March 31, 2015

Mr. Darrell Nitschke
Executive Director
North Dakota Public Service Commission
600 E. Boulevard, Dept. 408
Bismarck, ND 58505-0480



Dear Mr. Nitschke,

RE: North Dakota Pipeline Company LLC
Little Muddy Station Connection Project Siting Application
Docket No. PU-11-606
Beaver Lodge Loop Project Siting Application
Docket No. PU-10-613

Enclosed for filing please find eleven copies of North Dakota Pipeline Company LLC's Tree and Shrub Mitigation 2014 Report for the above captioned projects.

Please call should you have any questions.

Sincerely,

Sally Joyce
Regulatory Project Supervisor

Enc.

121 PU-11-606 Filed 03/31/2015 Pages: 7
Tree and shrub mitigation 2014 report
Enbridge Pipelines (North Dakota) LLC
Sally Joyce, Reg. Project Supervisor

243 PU-10-613 Filed 03/31/2015 Pages: 7
Tree and shrub mitigation 2014 report
Enbridge Pipelines (North Dakota) LLC
Sally Joyce, Reg. Project Supervisor



NORTH DAKOTA FOREST SERVICE

"To care for, protect and improve forest and natural resources to enhance the quality of life for present and future generations."

December 22, 2014

Sara Ploetz, Environmental Analyst II
Enbridge
1409 Hammond Avenue
Superior, WI 54880

Dear Ms. Ploetz,

Attached is the 2014 Annual Project Summary for the North Dakota Mitigation Tree Planting Partnership Program between the North Dakota Forest Service (NDFS) and Enbridge Pipelines (North Dakota) LLC, an approved program to replace 1,353 trees and shrubs to comply with the North Dakota Public Service Commission mitigation requirements. This three-year program is being financed through an award from Enbridge Pipelines (North Dakota) LLC to the North Dakota Forest Service.

As of December 31, 2014, 1,095 trees and shrubs have been planted on the properties of landowners having lost trees and shrubs through the construction of the Little Muddy and Beaver Lodge Loop Pipelines. An additional 774 trees and shrubs were planted on the properties of willing landowners at alternate locations, including the Parshall Bay Recreation Area, bringing the total number of trees and shrubs planted to 1,869. Plantings will be monitored to ensure a survival rate of at least 75%.

Thank you for the opportunity to assist Enbridge Pipelines (North Dakota) LLC with its mitigation tree planting obligations set forth by the North Dakota Public Service Commission. Please do not hesitate to contact our office if you need further assistance or information.

Sincerely,

Larry A. Kotchman
State Forester

**Enbridge Little Muddy & Beaver Lodge Loop Pipelines
Mitigation Tree Planting Partnership
2014 Project Status Update**

**Prepared for:
Sara Ploetz, Environmental Analyst II
Enbridge
1409 Hammond Avenue
Superior, WI 54880**



**Larry Kotchman, State Forester
NDSU- North Dakota Forest Service
307 First Street East
Bottineau, ND 58318
*December 10, 2014***

Overview

Mitigation criteria established by the Public Service Commission (PSC) ensures that trees and shrubs lost or destroyed during construction projects are replaced at a 2:1 ratio. As a result of the Enbridge Little Muddy and Beaver Lodge Loop pipeline projects (case numbers PU-10-612, PU-10-613, PU-10,232 and PU-11-606) 1,230 trees and shrubs must be planted to satisfy the mitigation requirements for this project. An additional number of trees and shrubs will be planted to offset unanticipated mortality, bringing the total number to be planted to 1,353. A minimum of 75% of these replacements must be living at the end of three growing seasons to satisfy criteria. Landowners impacted by the project have been offered a choice of having replacement trees and shrubs planted on their property or planted elsewhere at alternative locations. The remaining number of trees and shrubs will be planted at alternative locations through cooperative projects with tree planting entities and private landowners.

The NDFS is administering a mitigation tree planting program in cooperation with local soil conservation districts and private tree planting vendors. Interested landowners desiring to establish appropriate conservation tree plantings may apply with the NDFS for assistance. Eligible landowners will be encouraged to work directly with local soil conservation district partners and private tree planting vendors to secure professional tree planting design assistance and tree planting services. Practice specifications will be influenced by species suitability, soil characteristics, topography, land-use and the landowner's objectives. Eligible conservation tree planting practices include, but are not limited to, living snow fences, windbreaks, wildlife plantings, riparian restoration and buffers, and vegetative fuel breaks.

2014 Update

As of December 31, 2014, the tree and shrub mitigation planting requirements resulting from the Enbridge Little Muddy and Beaver Lodge Loop pipeline projects have been satisfied.

Location	Number of Trees and Shrubs Planted
Parshall Bay Recreation Area	189
Impacted Landowner's Property	1,095
Alternate Locations	585
Total	1,869

The total number of trees and shrubs planted slightly exceeds the number targeted in the tree plantings agreement. The plantings will be monitored and replacements trees and shrubs will be provided as appropriate to ensure compliance with mitigation requirements. Details of plantings locations are in attached Appendix A.

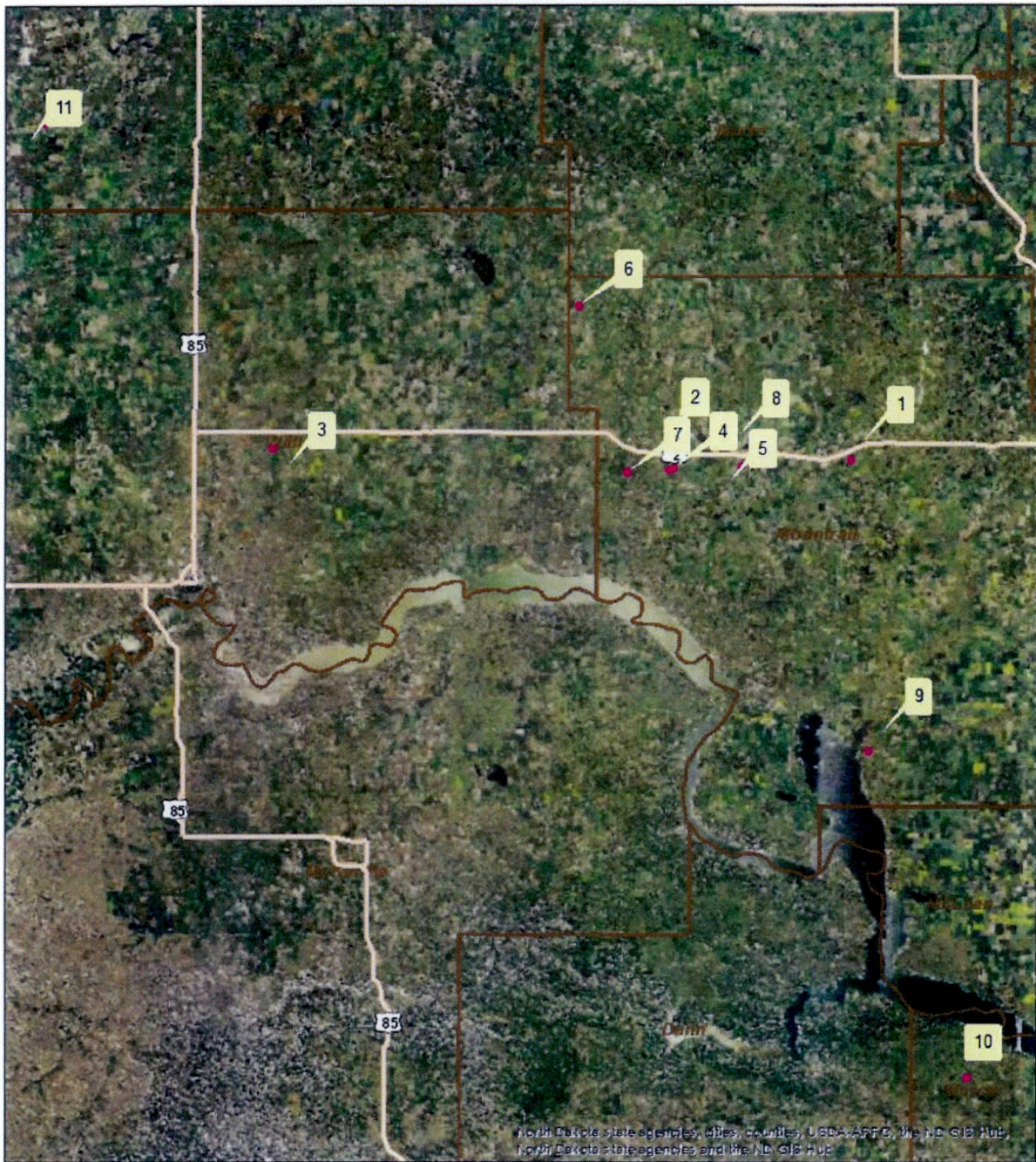
The following table describes the activities to be undertaken and the status of each as of December 2014.

Activity	Status December 2014
Enbridge provides funding to the NDFS, a map of the construction project showing the project route and indicating the preserved right-of-way and/or any restrictions relating to tree or shrub planting, the names and contact information of landowners directly impacted by the construction process, and copies of any communication with the impacted landowners relating to the replacement of trees and shrubs on their property.	Completed
NDFS works with SCD's and private vendors to develop specific plans for landowners impacted by the construction project and wishing to have trees and shrubs replaced on their property. All plantings will follow NRCS specifications ND-CPA-4's will be completed.	Completed
NDFS receives applications to the Tree Conservation Assistance Program, an established program, which serves to identify suitable locations for off-site tree planting projects. All plantings will follow NRCS specifications ND-CPA-4's will be completed.	Completed
NDFS reviews applications and appropriate locations for off-site plantings are selected. Plans are forwarded to SHPO for cultural resource review. NDFS develops award letters and agreements. Agreements are signed with landowners.	Completed
Sites are prepared for tree planting by mechanical or chemical means. Trees are ordered from nurseries. Trees are delivered from nurseries and stored in coolers. Site is inspected and staked for planting. Trees are planted. Fabric weed barrier is installed.	Completed
Invoice sent to NDFS. Reimbursements made through NDSU Business Office.	Completed
Landowners maintain projects as per agreement.	Ten year agreements initiated in 2013, 2014
NDFS inspects the tree and shrub plantings to determine mortality after at least one growing season.	April-November 2015
NDFS provides Enbridge with an annual report detailing the progress of the mitigation project, number and locations of plantings, and the mortality of the plantings following at least one growing season.	December 2013, 2014, 2015

Appendix A- Planting Information

Project Type	County	Quarter	Section	Township	Range	Number Planted	Map Reference Number
Impacted Landowner's Property	Mountrail	NW	25	156	91	30	1
	Mountrail	NW	31	156	93	72	2
	Williams	NW	19	156	99	15	3
	Mountrail	NE	31	156	93	62	4
	Mountrail	SW	29	156	92	476	5
	Mountrail	SE	18	158	94	200	6
	Mountrail	E2	33	156	94	200	7
	Mountrail	SW	21	156	92	40	8
Parshall Bay Rec. Area	Mountrail	SW	2	151	91	189	9
Alternate Locations	Mercer	NW	12	146	90	321	10
	Divide	NW	27	161	102	264	11

Tree Mitigation Planting Locations



0 5 10 20 Miles

