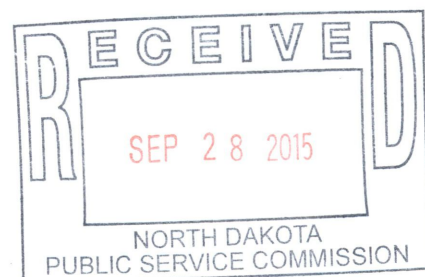


Brian R. Bjella
100 West Broadway, Suite 250
P.O. Box 2798
Bismarck, ND 58502-2798
701.223.6585
bbjella@crowleyfleck.com

September 28, 2015

via hand delivery

Mr. Darrell Nitschke
Executive Secretary
North Dakota Public Service Commission
600 E. Boulevard, Dept. 408
Bismarck, ND 58505-0480



In re: Enbridge Pipelines (North Dakota) LLC
Beaver Lodge Loop Project
Williams, Mountrail and Ward Counties
North Dakota PSC As-Built Submittal
Docket No. PU-10-613
Our File No. 31-411-003

Dear Mr. Nitschke:

Enclosed for filing in the above captioned matter please find two copies of responses to Mr. Patrick Fahn's request dated August 19, 2015, regarding Final Construction Inspection Reports.

Please call should you have any questions.

Very truly yours,

Brian R. Bjella

bw
Enc.



September 22, 2015

North Dakota Pipeline Company LLC, dba NDPL LLC, formerly known as Enbridge Pipelines (North Dakota) LLC, provides the enclosed information in response to the request from Mr. Patrick Fahn dated August 18, 2015 regarding Final Construction Inspection Reports. Regarding Docket PU-10-613, Mr. Fahn requested the following:

PU-10-613

On May 18, 2011, the Commission issued an order authorizing Enbridge Pipelines (North Dakota) LLC approval to build a crude oil pipeline and associated facilities in Ward, Mountrail and Williams Counties, North Dakota. On September 6, 2011, the Commission approved amendments to the corridor and pipeline route. On July 11, 2012, the Commission approved amendments to the Tree and Shrub Mitigation Specifications to allow for a wider workspace. On July 17, 2012 the Commission issued an order for a route change in Mountrail County.

A final inspection report was issued for this project on July 31, 2014. In the report, it was noted that the Company had not yet complied with a number of Order Points. In order to demonstrate its compliance with these order points, the Commission requests the Company provide the following information:

- Settlement was found along sections 88+00 to 390+00 between Mile Post 74.8 and 68.7 due to the construction of another pipeline. The Company should confirm that this area was reseeded to match existing conditions by either Enbridge or the other construction company. (Certification Relating to Order Provisions 18)
- Trees and shrubs were planted in 2014. As a result, the Commission will need three years of monitoring after planting to comply with the Tree and Shrub Mitigation Specification. That is, reports will be required in 2015, 2016 and 2017 with a 75 percent survival rate required at the end of the three years.
- Evidence that the Company received the permit for the Berthold Station hydrostatic testing. (Certification Relating to Order Provisions 4)

Please find attached the following items:

Attachment A – Verification that the area along Mile Post 74.8 and 68.7 was reseeded to match existing conditions by Enbridge or the company constructing the adjacent pipeline to complete Certification Relating to Order Provision No 18.

Attachment B – Verification that Tree and Shrub Monitoring Reports will be filed in 2015, 2016, and 2017.

Attachment C – Berthold Station Hydrostatic Testing Permit completing Order Point No.4.



North Dakota Pipeline Company LLC

Docket No. PU-10-613

Attachment A

Docket No. PU-10-613
Attachment A

Site verification that reseeding efforts have been successful to satisfy Order Point No. 18. Attach below are photographs taken along the Right-of-way verifying reclamation efforts.

BLLP East ROW, Tract BB-82-73, facing northeast



Docket No. PU-10-613
Attachment A



BLLP East ROW, Tract BB-124, facing west



BLLP West ROW, 103rd Avenue, NW looking NE

Docket No. PU-10-613
Attachment A



BLLP West ROW, 102nd Avenue NW, looking east



BLLP West ROW, 94th Avenue NW, looking west

Docket No. PU-10-613
Attachment A



BLLP West ROW, 93rd Avenue NW, looking west



BLLP West ROW, 90th Avenue NW, looking east



North Dakota Pipeline Company LLC

Docket No. PU-10-613

Attachment B

Attached is the Tree and Shrub Annual Report from the North Dakota Forest Service (NDFS) for the Beaver Lodge Loop Project. This report was received in December, 2014, but due to our oversight has not been filed with the Commission.

The attached report is incorrectly titled Enbridge Little Muddy and Beaver Lodge Loop Pipelines. The 2014 Project Status Update from the NDFS actually covers the following projects as outlined on page one of the Report:

- Docket No. PU-10-612 Bakken Pipeline Project
- Docket No. PU-10-613 Beaver Lodge Loop Project
- Docket No. PU-11-232 Berthold Station Expansion Project
- Docket No. PU-11-606 Little Muddy Pipeline Project



NORTH DAKOTA FOREST SERVICE

"To care for, protect and improve forest and natural resources to enhance the quality of life for present and future generations."

December 22, 2014

Sara Ploetz, Environmental Analyst II
Enbridge
1409 Hammond Avenue
Superior, WI 54880

Dear Ms. Ploetz,

Attached is the 2014 Annual Project Summary for the North Dakota Mitigation Tree Planting Partnership Program between the North Dakota Forest Service (NDFS) and Enbridge Pipelines (North Dakota) LLC, an approved program to replace 1,353 trees and shrubs to comply with the North Dakota Public Service Commission mitigation requirements. This three-year program is being financed through an award from Enbridge Pipelines (North Dakota) LLC to the North Dakota Forest Service.

As of December 31, 2014, 1,095 trees and shrubs have been planted on the properties of landowners having lost trees and shrubs through the construction of the Little Muddy and Beaver Lodge Loop Pipelines. An additional 774 trees and shrubs were planted on the properties of willing landowners at alternate locations, including the Parshall Bay Recreation Area, bringing the total number of trees and shrubs planted to 1,869. Plantings will be monitored to ensure a survival rate of at least 75%.

Thank you for the opportunity to assist Enbridge Pipelines (North Dakota) LLC with its mitigation tree planting obligations set forth by the North Dakota Public Service Commission. Please do not hesitate to contact our office if you need further assistance or information.

Sincerely,

A handwritten signature in blue ink that reads "Larry A. Kotchman".

Larry A. Kotchman
State Forester

Enbridge Little Muddy & Beaver Lodge Loop Pipelines Mitigation Tree Planting Partnership 2014 Project Status Update

Prepared for:
Sara Ploetz, Environmental Analyst II
Enbridge
1409 Hammond Avenue
Superior, WI 54880



Larry Kotchman, State Forester
NDSU- North Dakota Forest Service
307 First Street East
Bottineau, ND 58318
December 10, 2014

Overview

Mitigation criteria established by the Public Service Commission (PSC) ensures that trees and shrubs lost or destroyed during construction projects are replaced at a 2:1 ratio. As a result of the Enbridge Little Muddy and Beaver Lodge Loop pipeline projects (case numbers PU-10-612, PU-10-613, PU-10,232 and PU-11-606) 1,230 trees and shrubs must be planted to satisfy the mitigation requirements for this project. An additional number of trees and shrubs will be planted to offset unanticipated mortality, bringing the total number to be planted to 1,353. A minimum of 75% of these replacements must be living at the end of three growing seasons to satisfy criteria. Landowners impacted by the project have been offered a choice of having replacement trees and shrubs planted on their property or planted elsewhere at alternative locations. The remaining number of trees and shrubs will be planted at alternative locations through cooperative projects with tree planting entities and private landowners.

The NDFS is administering a mitigation tree planting program in cooperation with local soil conservation districts and private tree planting vendors. Interested landowners desiring to establish appropriate conservation tree plantings may apply with the NDFS for assistance. Eligible landowners will be encouraged to work directly with local soil conservation district partners and private tree planting vendors to secure professional tree planting design assistance and tree planting services. Practice specifications will be influenced by species suitability, soil characteristics, topography, land-use and the landowner's objectives. Eligible conservation tree planting practices include, but are not limited to, living snow fences, windbreaks, wildlife plantings, riparian restoration and buffers, and vegetative fuel breaks.

2014 Update

As of December 31, 2014, the tree and shrub mitigation planting requirements resulting from the Enbridge Little Muddy and Beaver Lodge Loop pipeline projects have been satisfied.

Location	Number of Trees and Shrubs Planted
Parshall Bay Recreation Area	189
Impacted Landowner's Property	1,095
Alternate Locations	585
Total	1,869

The total number of trees and shrubs planted slightly exceeds the number targeted in the tree plantings agreement. The plantings will be monitored and replacements trees and shrubs will be provided as appropriate to ensure compliance with mitigation requirements. Details of plantings locations are in attached Appendix A.

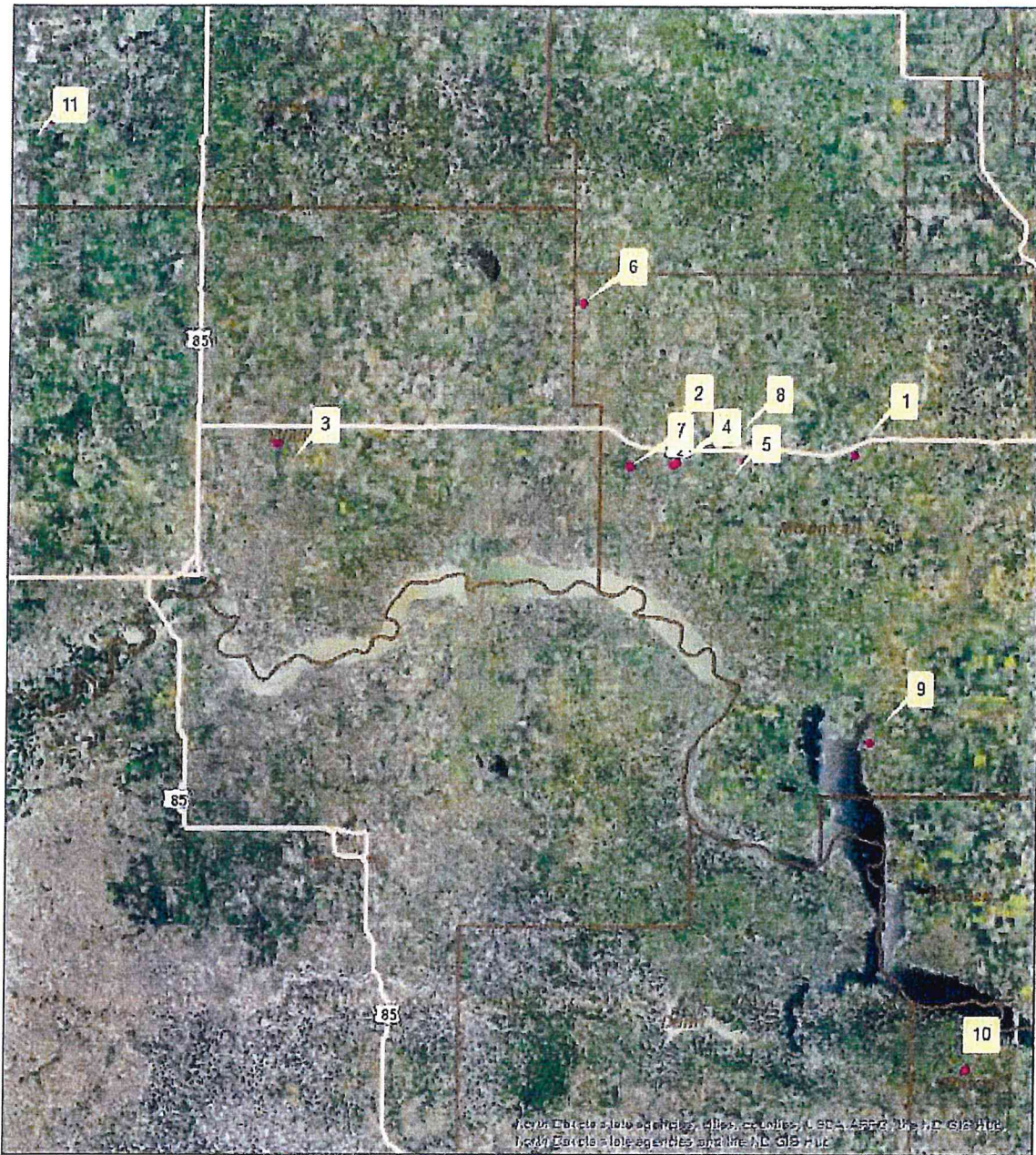
The following table describes the activities to be undertaken and the status of each as of December 2014.

Activity	Status December 2014
Enbridge provides funding to the NDFS, a map of the construction project showing the project route and indicating the preserved right-of-way and/or any restrictions relating to tree or shrub planting, the names and contact information of landowners directly impacted by the construction process, and copies of any communication with the impacted landowners relating to the replacement of trees and shrubs on their property.	Completed
NDFS works with SCD's and private vendors to develop specific plans for landowners impacted by the construction project and wishing to have trees and shrubs replaced on their property. All plantings will follow NRCS specifications ND-CPA-4's will be completed.	Completed
NDFS receives applications to the Tree Conservation Assistance Program, an established program, which serves to identify suitable locations for off-site tree planting projects. All plantings will follow NRCS specifications ND-CPA-4's will be completed.	Completed
NDFS reviews applications and appropriate locations for off-site plantings are selected. Plans are forwarded to SHPO for cultural resource review. NDFS develops award letters and agreements. Agreements are signed with landowners.	Completed
Sites are prepared for tree planting by mechanical or chemical means. Trees are ordered from nurseries. Trees are delivered from nurseries and stored in coolers. Site is inspected and staked for planting. Trees are planted. Fabric weed barrier is installed.	Completed
Invoice sent to NDFS. Reimbursements made through NDSU Business Office.	Completed
Landowners maintain projects as per agreement.	Ten year agreements initiated in 2013, 2014
NDFS inspects the tree and shrub plantings to determine mortality after at least one growing season.	April-November 2015
NDFS provides Enbridge with an annual report detailing the progress of the mitigation project, number and locations of plantings, and the mortality of the plantings following at least one growing season.	December 2013, 2014, 2015

Appendix A- Planting Information

Project Type	County	Quarter	Section	Township	Range	Number Planted	Map Reference Number
Impacted Landowner's Property	Mountrail	NW	25	156	91	30	1
	Mountrail	NW	31	156	93	72	2
	Williams	NW	19	156	99	15	3
	Mountrail	NE	31	156	93	62	4
	Mountrail	SW	29	156	92	476	5
	Mountrail	SE	18	158	94	200	6
	Mountrail	E2	33	156	94	200	7
	Mountrail	SW	21	156	92	40	8
Parshall Bay Rec. Area	Mountrail	SW	2	151	91	189	9
Alternate Locations	Mercer	NW	12	146	90	321	10
	Divide	NW	27	161	102	264	11

Tree Mitigation Planting Locations



0 5 10 20 Miles





North Dakota Pipeline Company LLC

Docket No. PU-10-613

Attachment C



NORTH DAKOTA
DEPARTMENT of HEALTH

ENVIRONMENTAL HEALTH SECTION
Gold Seal Center, 918 E. Divide Ave.
Bismarck, ND 58501-1947
701.328.5200 (fax)
www.ndhealth.gov



July 30, 2012

Sara Ploetz
Enbridge Pipelines (North Dakota) LLC
1409 Hammond Avenue
Superior, WI 54880

Re: NDPDES Permit No. NDG070337

We have received your "Application for Permit to Discharge - NDPDES Industrial-Short Form C" and have granted authority to discharge under the General Permit for Temporary Dewatering/Hydrostatic Testing Permit NDG070000. Your facility has been assigned permit no. **NDG070337**. This permit has been issued by the North Dakota Department of Health (NDDoH) with the understanding that all other applicable permits and permissions have been obtained for the start of the following project. The application indicates that the discharge(s) will consist of ground, surface, or potable water from the expansion project of the Berthold Station:

<u>Discharge Point</u>	<u>Volume (Gallons)</u>	<u>Location</u>
001H	≈ Unknown	Berthold Station TWN 156N, RNG 86W, Sections, 20,21 County Ward


All discharge points shall be inspected daily. On a daily basis record the total volume of discharge and make a visual inspection for Oil and Grease. Analytical parameters for pH and Total Suspended Solids (TSS) shall be tested for this project. The parameter for Chlorine shall be tested only if the water source has been chlorinated. The parameter of Oil and/or Grease is waived unless sheen is observed in the discharge; if observed then collect a sample for Total Petroleum Hydrocarbon (TPH). The department shall be contacted on all findings of Oil and Grease. All discharges made directly to a surface water body or wetland shall be inspected closely so as to minimize any turbidity issues. Best Management Practices (BMPs) must be used to minimize the impact of the discharge.

ADDITIVES: No additives were reviewed for this project.

Enclosed are Discharge Monitoring Report (DMR) forms for your use. If someone else is responsible for the submittal of the DMRs, please forward this letter and the enclosed forms to them. The reports cover three months; the dates and location have been filled out. If no discharge occurs during the reporting period, check "No" in section one. The reports must be post-marked by the last day of the month following the end of each reporting period. All original DMR forms should be sent to NDDoH and a copy should be kept for your files. **EPA no longer requires a copy of the DMR form.**

If any other testing is conducted during this project, copies of the results of any such test should be forwarded to the Department. **Should you wish to no longer be covered under this permit, you must submit a written request to terminate and cite the reasons for termination.** Coverage shall be maintained until a written notification to release has been issued to the permittee by NDDoH. Should you have any questions about your permit or how to complete the DMRs, please contact me at (701) 328-5234.

Sincerely,


Marty Haroldson
Environmental Scientist
Division of Water Quality

Enc.
Cc: EPA

Environmental Health
Section Chief's Office
701.328.5150

Division of
Air Quality
701.328.5188

Division of
Municipal Facilities
701.328.5211

Division of
Waste Management
701.328.5166

Division of
Water Quality
701.328.5210