

**Addendum to a Class I and Class III
Cultural Resource Inventory of the
Bakken North Pipeline, Williams
County, North Dakota**

Prepared for

Plains All American Pipeline, L.P.

Prepared by

SWCA Environmental Consultants

October 2011

MANUSCRIPT DATA RECORD FORM

1. Manuscript Number:
2. SHPO Reference #:
3. Author(s): Carolyn Riordan and Adam D. Leroy
4. Title: Addendum to a Class I and Class III Cultural Resource Inventory of the Bakken North Pipeline, Williams County, North Dakota
5. Report Date: October 14, 2011
6. Number of Pages: 50
7. Type – I, T, E, O: I
8. Acres: 129.75
9. Legal Location(s) (no quarter sections) with Historic Context Study Unit(s):
Consult the township tables in *The North Dakota Comprehensive Plan for Historic Preservation: Archeological Component*, (SHSND 2008; available at <http://history.nd.gov/hp/hpforms.html>) for Study Unit assignments.
Study Units: LM, CB, KN, HE, SM, GA, JA, GR, NR, SR, SO, SH, YE

<u>COUNTY</u>	<u>TWP</u>	<u>RNG</u>	<u>SEC</u>	<u>SU</u>
Williams	154N	102W	3, 10, 15, 22, 26, 27, 35	GA
	155N	102W	22, 27, 34	GA
	156N	102W	8, 9, 15, 16, 21, 28, 33	GA
	157N	102W	19, 28, 29, 30, 33, 34	GA
	157N	103W	4, 9, 10, 13, 14, 15, 24	GA

**Addendum to a Class I and Class III Cultural Resource Inventory
of the Bakken North Pipeline,
Williams County, North Dakota**

Submitted to:

State Historical Society of North Dakota

Prepared for:

**Plains All American Pipeline, L.P.
333 Clay Street, Suite 1600
Houston, Texas 77002**

Prepared by:

Carolyn Riordan and Adam D. Leroy

Principal Investigator:

Judith R. Cooper

**SWCA Environmental Consultants
116 North 4th Street, Suite 200
Bismarck, North Dakota 58501**

SWCA Cultural Resource Report Number 11-489
Addendum to SWCA Cultural Resource Report Number 11-311

October 14, 2011

ABSTRACT

This report is an addendum to the Class I and Class III report for the cultural resource inventory of the Bakken North Pipeline, Williams County, North Dakota (Baer et al. 2011) and outlines the results of a Class III cultural resource inventory conducted by SWCA Environmental Consultants (SWCA) on August 16–19 and September 19, 2011, on behalf of Plains All American Pipeline, L.P. (PAA), for the proposed Bakken North Pipeline reroutes. The survey area consists of 129.75 acres to accommodate additional area for the proposed station locations, temporary workspace, and pipeline alignment shifts due to cultural, landowner, and engineering concerns. The reroute inventory area is located in Williams County, North Dakota, on lands owned by the State of North Dakota and private landowners, between the Montana border and the town of Trenton, North Dakota.

In its entirety the proposed Bakken North Pipeline is 79.25 miles long and starts approximately 7.50 miles southwest of Williston, North Dakota, and terminates approximately 1.75 miles from Outlook, Montana, in Sheridan County. The jurisdictional agency presiding over the North Dakota portion of the Bakken North Pipeline is the North Dakota Public Service Commission (NDPSC). In compliance with NDPSC requirements, PAA requested SWCA perform a cultural resource survey to assess the potential effect of activities associated with the construction of the crude oil pipeline. As proposed, the final pipeline alignment, station locations, and additional workspace are contained entirely within the land inventoried by SWCA, and incorporate portions of the previously inventoried area (Baer et al. 2011) and the reroutes discussed herein.

The Class III inventory includes irregularly shaped survey areas that combine both block and linear survey methods to accommodate the ancillary areas and pipeline reroutes. Where appropriate, a 200-foot-wide survey corridor centered on each of the proposed pipeline centerline reroutes was inventoried. In total, 129.75 acres were inventoried for the project. The proposed reroutes are located in Sections 3, 10, 15, 22, 26, 27, and 35 of Township (T) 154 North (N), Range (R) 102 West (W); Sections 22, 27, and 34 of T155N, R102W; Sections 8, 9, 15, 16, 21, 28, and 33 of T156N, R102W; Sections 19, 28, 29, 30, 33, and 34 of T157, R102W; and Sections 4, 9, 10, 13, 14, 15, and 24 of T157N, R103W.

SWCA newly recorded two sites (32WI1183 and 32WI1184) during the inventory. 32WI1183 and 32WI1184 are stone features sites. Both sites are recommended unevaluated regarding their National Register of Historic Places eligibility; therefore, avoidance is recommended. 32WI1183 is adequately avoided by the final pipeline alignment, as the construction right-of-way (ROW) is approximately 124 feet from the site. 32WI1184 is approximately 54 feet from the construction ROW; therefore, it is recommended that access to the area abutting the eastern edge of the construction ROW be restricted for a linear distance of 150 feet, to ensure all construction activities remain within the corridor. SWCA further recommends that the site be fenced and that a qualified archaeological monitor be present during all ground-disturbing activities adjacent to the site.

Additionally, SWCA inventoried a reroute to the east of 32WI1151, an unevaluated stone feature site recorded during the initial centerline survey (Baer et al. 2011). At that time of the initial recording, the pipeline was proposed to pass immediately west of 32WI1151. Given the

proximity of the alignment, fencing and archaeological monitoring were recommended at the site during pipeline construction. The current reroute was inventoried to the east due to easement issues encountered following the initial inventory. Using this reroute, as proposed, the final pipeline construction corridor will avoid 32WI1151 by 91 feet. Therefore, because 32WI1151 is adequately avoided, fencing and monitoring are no longer recommended. No further work is recommended at 32WI1151.

With the above stipulations it is recommended that the project be granted a determination of *No Historic Properties Affected* and *No Significant Sites Affected* and clearance to proceed as planned.

This page intentionally left blank.

TABLE OF CONTENTS

	<u>Page</u>
ABSTRACT.....	II
INTRODUCTION	1
PROJECT SETTING AND BACKGROUND	19
BACKGROUND RESEARCH.....	19
FIELDWORK METHODS.....	19
INVENTORY RESULTS AND RECOMMENDATIONS.....	20
32WI1151.....	20
32WI1183.....	21
32WI1184.....	27
CONCLUSIONS.....	31
REFERENCES CITED.....	32

LIST OF FIGURES

<u>Figure</u>	<u>Page</u>
1. Project area overview map.....	2
2. Project area map 1 of 16.....	3
3. Project area map 2 of 16.....	4
4. Project area map 3 of 16.....	5
5. Project area map 4 of 16.....	6
6. Project area map 5 of 16.....	7
7. Project area map 6 of 16.....	8
8. Project area map 7 of 16.....	9
9. Project area map 8 of 16.....	10
10. Project area map 9 of 16.....	11
11. Project area map 10 of 16.....	12
12. Project area map 11 of 16.....	13
13. Project area map 12 of 16.....	14
14. Project area map 13 of 16.....	15
15. Project area map 14 of 16.....	16
16. Project area map 15 of 16.....	17
17. Project area map 16 of 16.....	18
18. 32WI1151 site sketch map.....	21
19. 32WI1183 site overview, facing southwest.....	22
20. 32WI1183 site sketch map.....	23
21. 32WI1183, Feature 1, stone circle, tape at 1 m, facing north.....	24
22. 32WI1183, Feature 2, stone circle, tape at 1 m, facing north.....	25
23. 32WI1183, Feature 3, stone cairn, tape at 1 m, facing east.....	26
24. 32WI1183, Feature 4, stone cairn, tape at 1 m, facing west.....	26
25. 32WI1184 site sketch map.....	28
26. 32WI1184 site overview, 52nd Street NW visible in background, facing west.....	29
27. 32WI1184, Feature 1, cairn, tape at 1 m, facing south.....	30

TABLE OF CONTENTS (continued)

LIST OF APPENDICES

Appendix

- A North Dakota Site Forms
- B Resource Location Maps

INTRODUCTION

This addendum report outlines the results of a Class III cultural resource inventory conducted by SWCA Environmental Consultants (SWCA) on August 16–19 and September 19, 2011, on behalf of Plains All American Pipeline, L.P. (PAA), for the proposed Bakken North Pipeline reroutes. The inventory area consists of 129.75 acres to accommodate additional area for the proposed station locations, temporary workspace, and pipeline alignment shifts due to cultural, landowner, and engineering concerns. The reroute inventory area is located in Williams County, North Dakota, on lands owned by the State of North Dakota and private landowners, between the Montana border and the town of Trenton, North Dakota.

In its entirety, the proposed Bakken North Pipeline is 79.25 miles long and starts approximately 7.50 miles southwest of Williston, North Dakota, and terminates approximately 1.75 miles from Outlook, Montana, in Sheridan County. The jurisdictional agency presiding over the North Dakota portion of the Bakken North Pipeline is the North Dakota Public Service Commission (NDPSC). In compliance with NDPSC requirements, PAA requested SWCA perform a cultural resource survey to assess the potential effect of activities associated with the installation of the crude oil pipeline. The final pipeline alignment within North Dakota, incorporating portions of the originally proposed alignment (Baer et al. 2011) and the rerouted alignments, measures 32.07 miles in length. The proposed construction right-of-way (ROW) width is 70 feet with a 50-foot-wide permanent ROW and 20 feet of temporary workspace. The temporary construction ROW will be offset according to construction needs and avoidance of cultural sites. As proposed, the final pipeline alignment, station locations, and additional workspace are contained entirely within the land inventoried by SWCA.

For the North Dakota portion of the Bakken North Pipeline project, 773.31 acres were previously inventoried (Baer et al. 2011). The additional survey area discussed herein consists of 129.75 acres and includes additional land surveyed for the proposed station locations, temporary workspace, and pipeline alignment shifts. The reroute inventory areas are located in Williams County, North Dakota, in Sections 3, 10, 15, 22, 26, 27, and 35 of Township (T) 154 North (N), Range (R) 102 West (W); Sections 22, 27, and 34 of T155N, R102W; Sections 8, 9, 15, 16, 21, 28, and 33 of T156N, R102W; Sections 19, 28, 29, 30, 33, and 34 of T157, R102W; and Sections 4, 9, 10, 13, 14, 15, and 24 of T157N, R103W (Figures 1–17). The Class III inventory includes irregularly shaped survey areas that combine both block and linear survey methods to accommodate ancillary areas and pipeline reroutes. Where appropriate, a 200-foot-wide survey corridor centered on each of the proposed pipeline centerline reroutes was inventoried. In total, 129.75 acres were inventoried for the project.

For the cultural resource investigation, Judith Cooper served as Principal Investigator. Fieldwork was performed by Adam Leroy (permitted archaeologist within the State of North Dakota), Vincent Wray, and Scott Yost. All field notes and photographs are on file at SWCA's Bismarck, North Dakota, office under project number 17283.

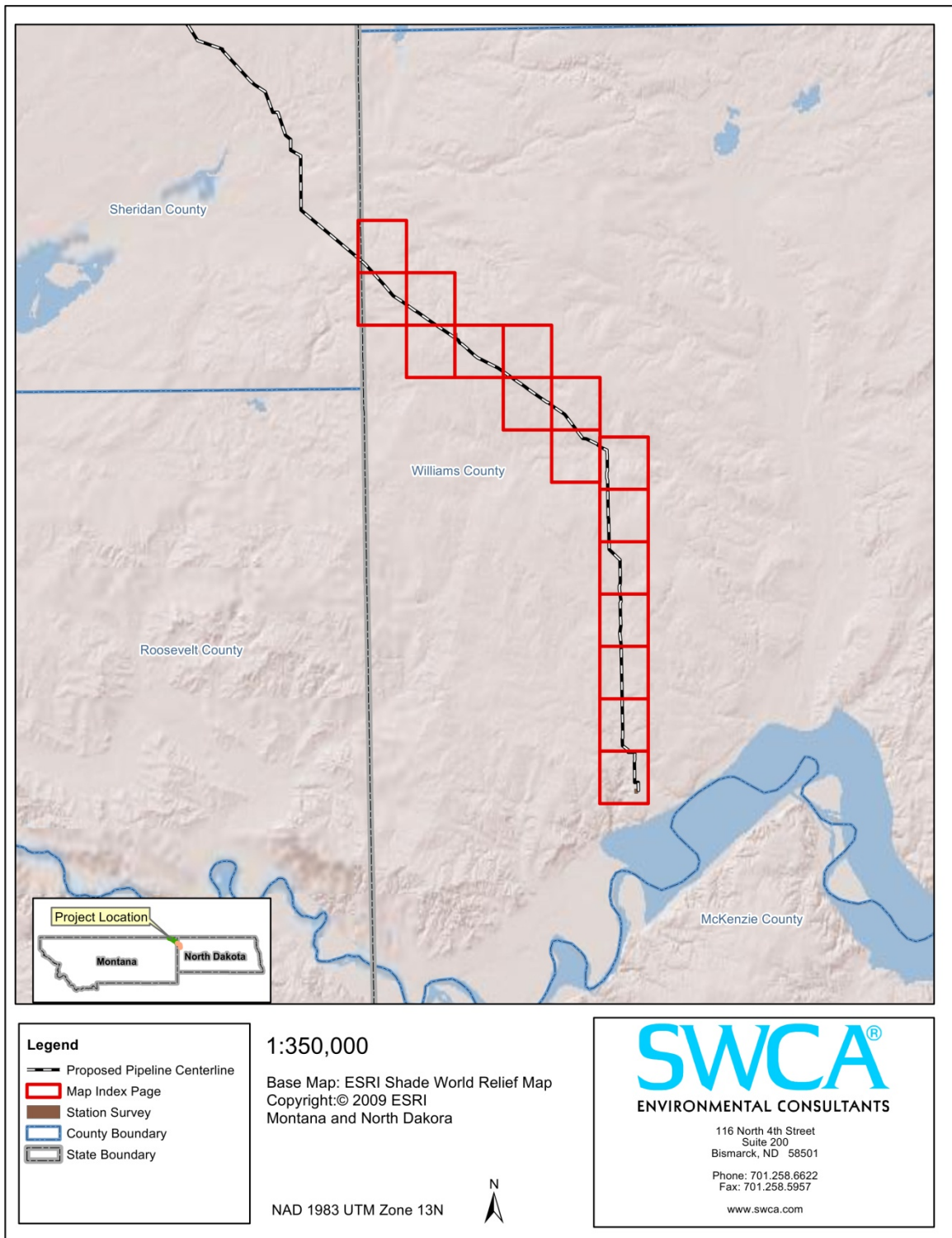


Figure 1. Project area overview map.

Contains Privileged Information -- Do Not Release

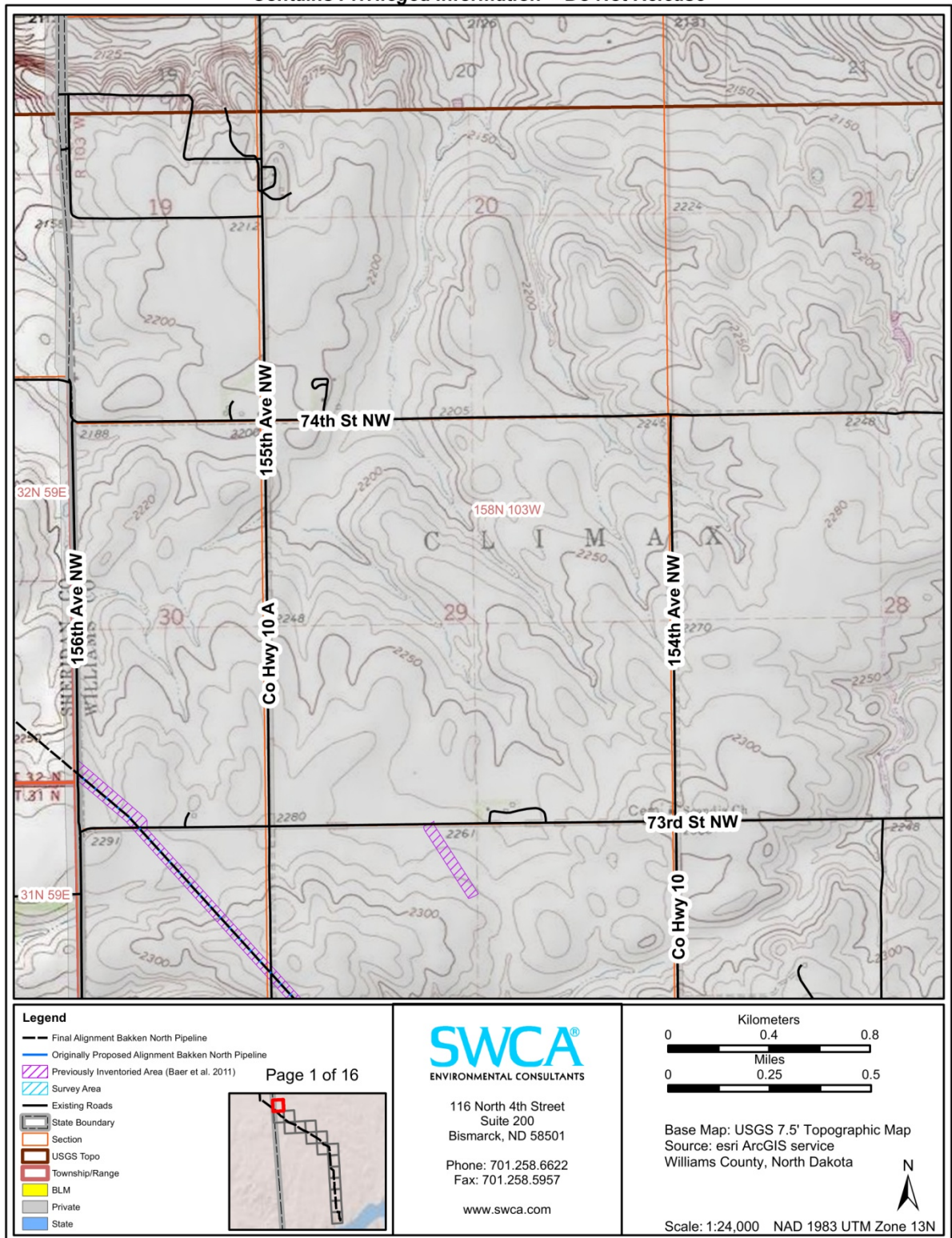


Figure 2. Project area map 1 of 16.

Contains Privileged Information -- Do Not Release

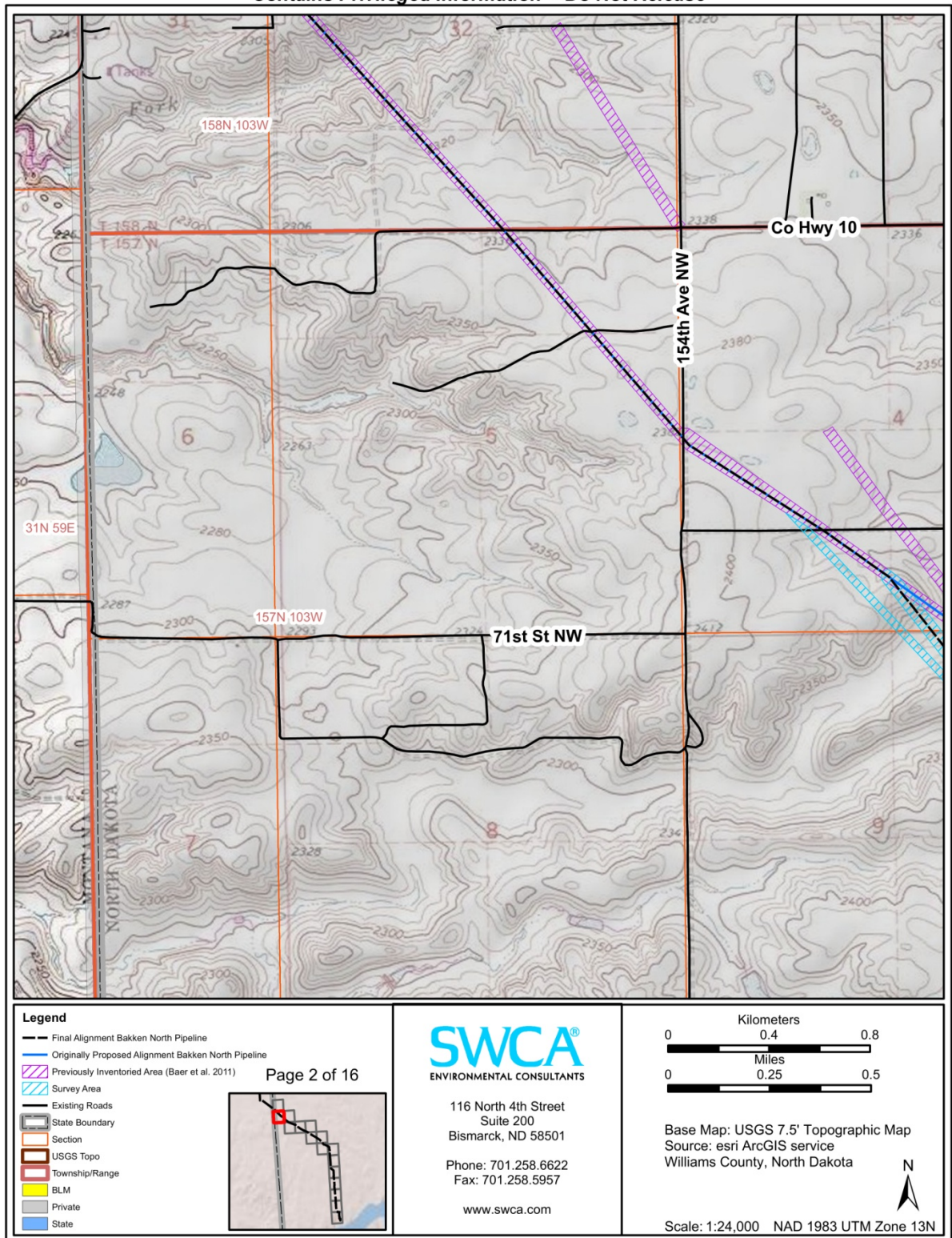


Figure 3. Project area map 2 of 16.

Contains Privileged Information -- Do Not Release

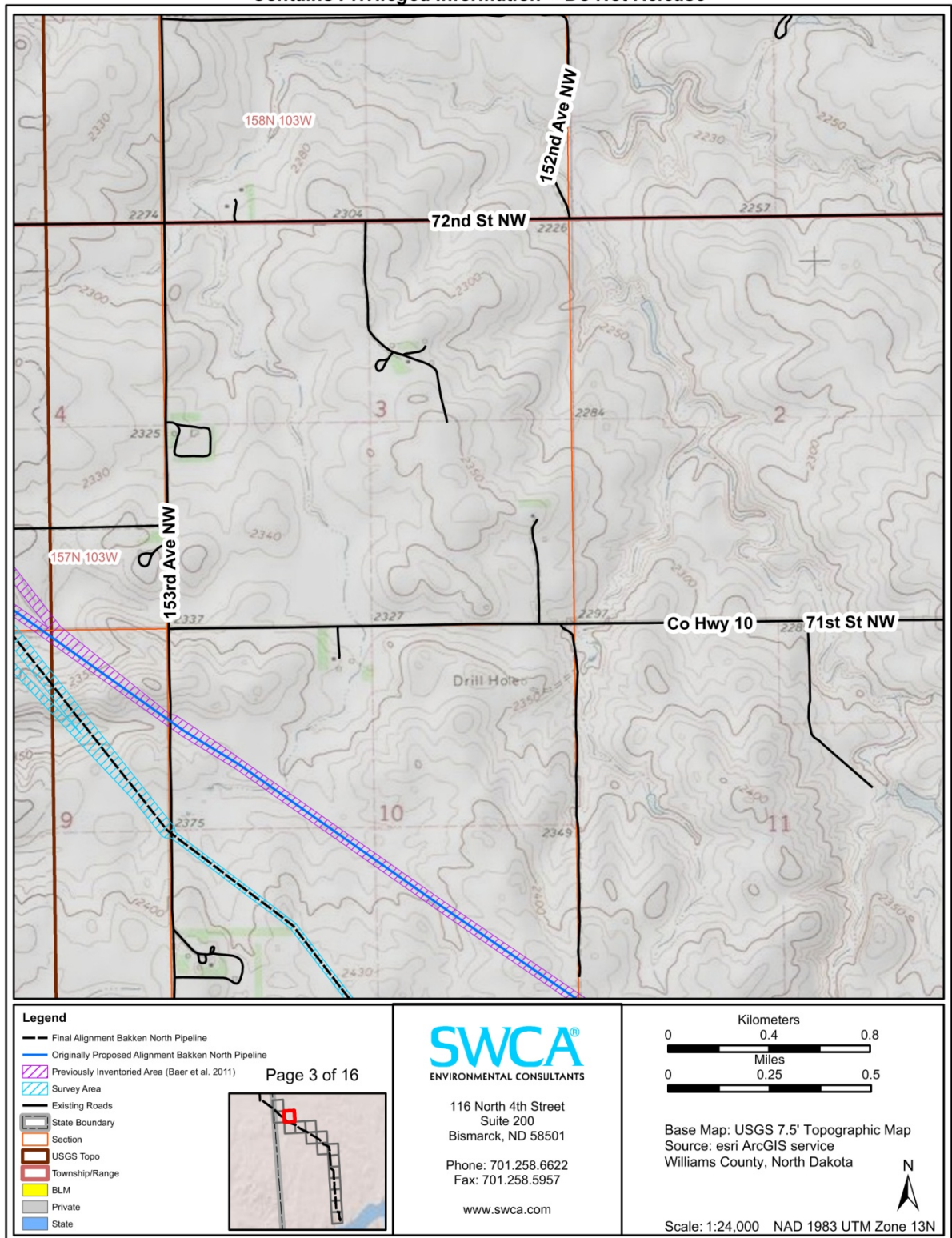


Figure 4. Project area map 3 of 16.

Contains Privileged Information -- Do Not Release

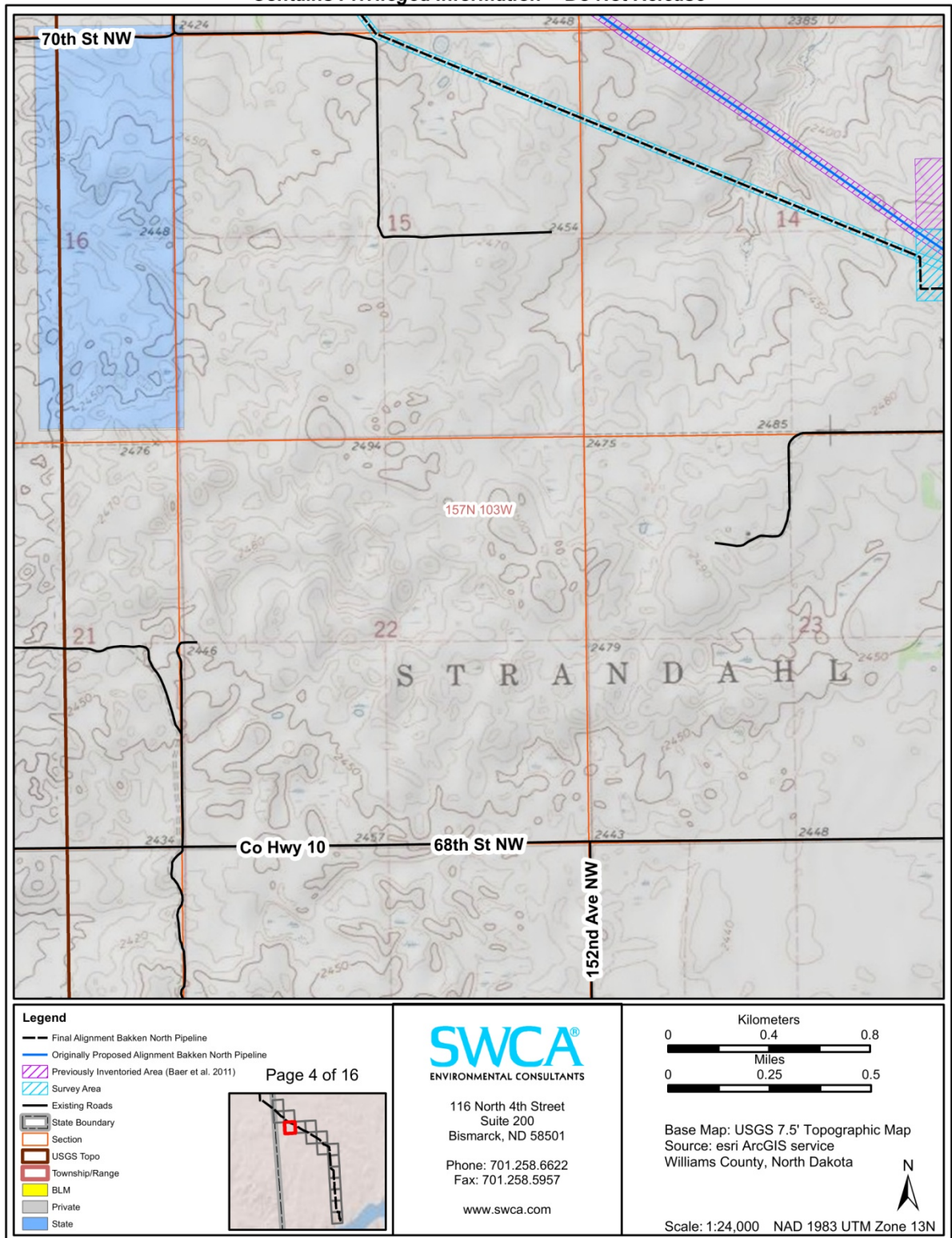


Figure 5. Project area map 4 of 16.

Contains Privileged Information -- Do Not Release

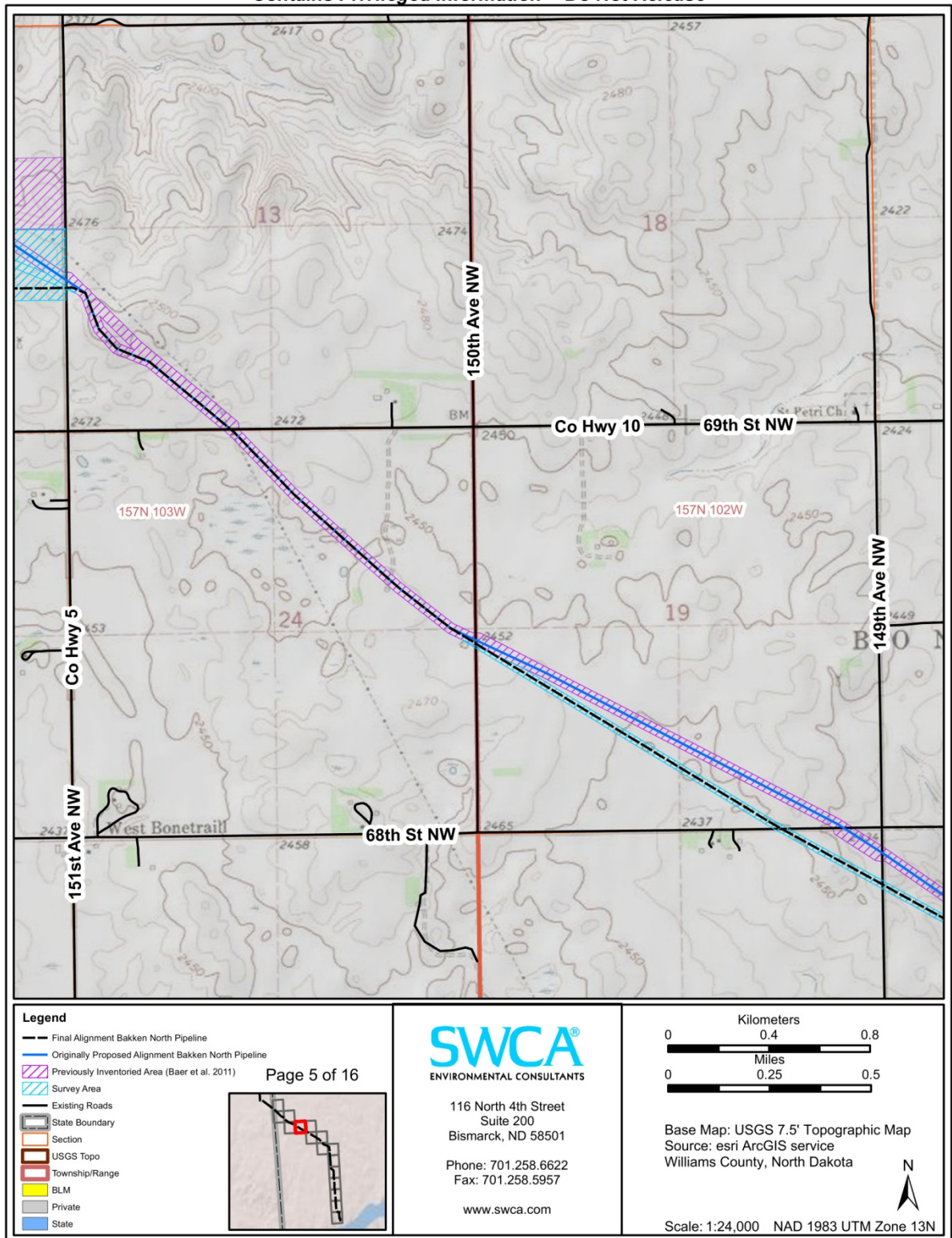


Figure 6. Project area map 5 of 16.

Contains Privileged Information -- Do Not Release

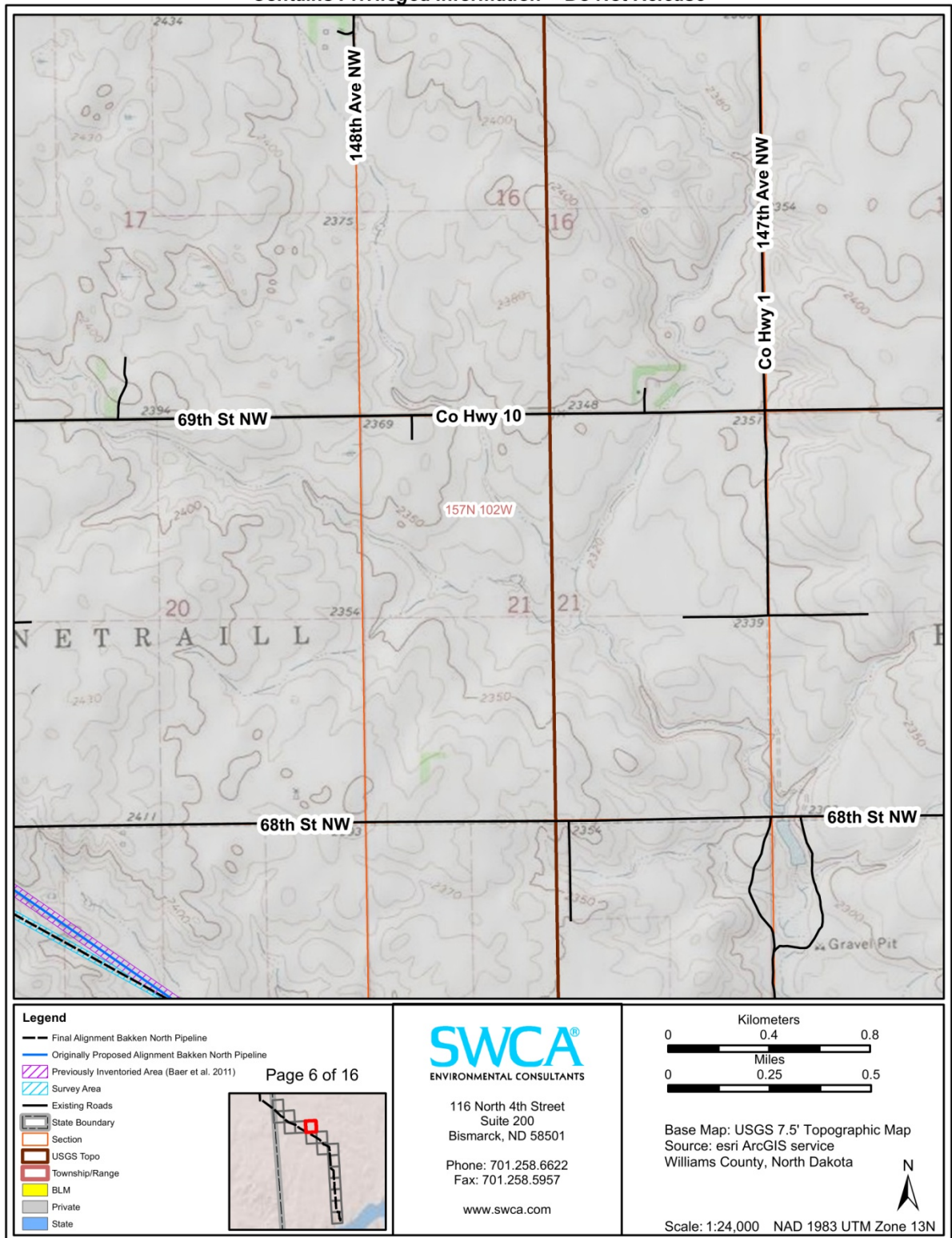


Figure 7. Project area map 6 of 16.

Contains Privileged Information -- Do Not Release

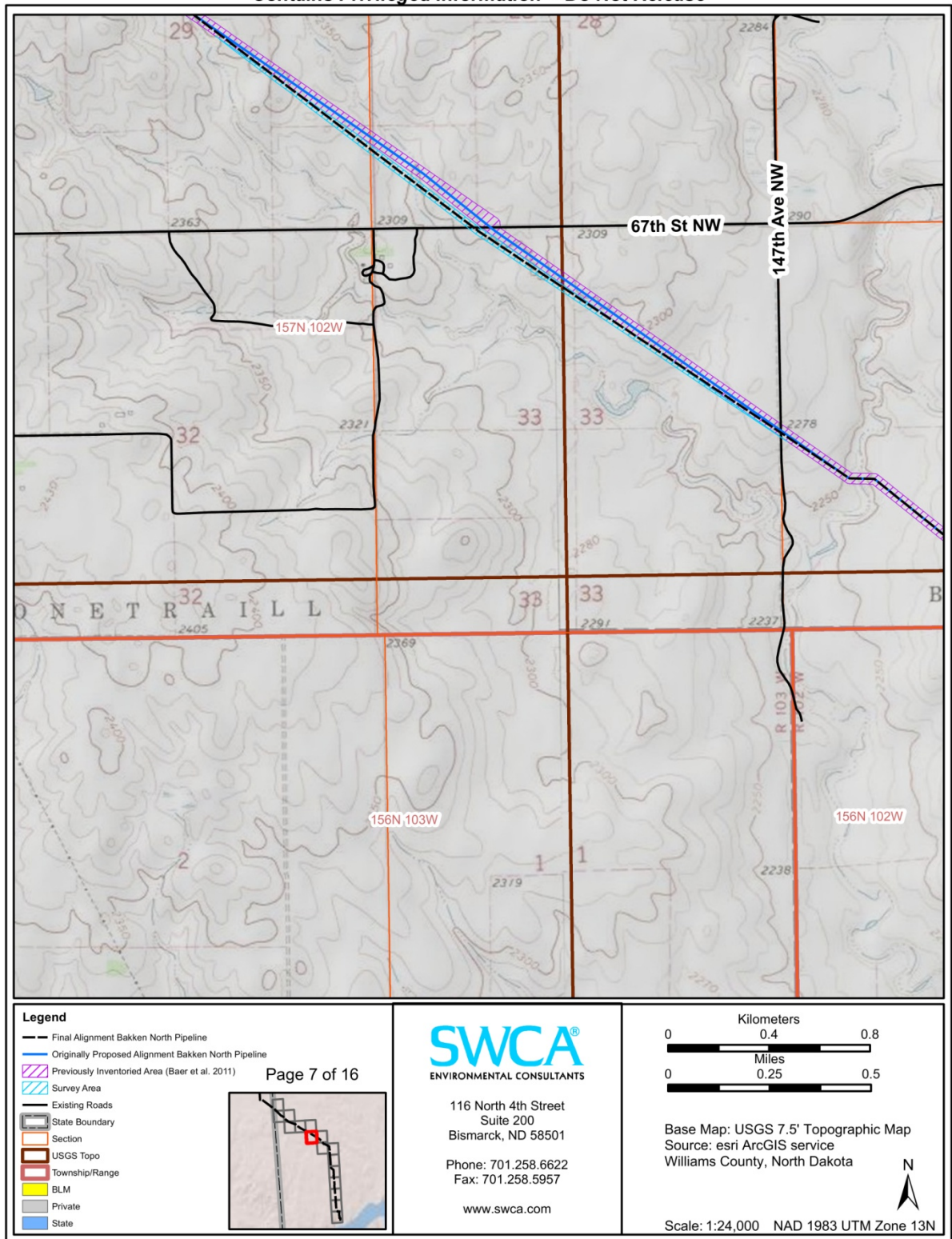


Figure 8. Project area map 7 of 16.

Contains Privileged Information -- Do Not Release

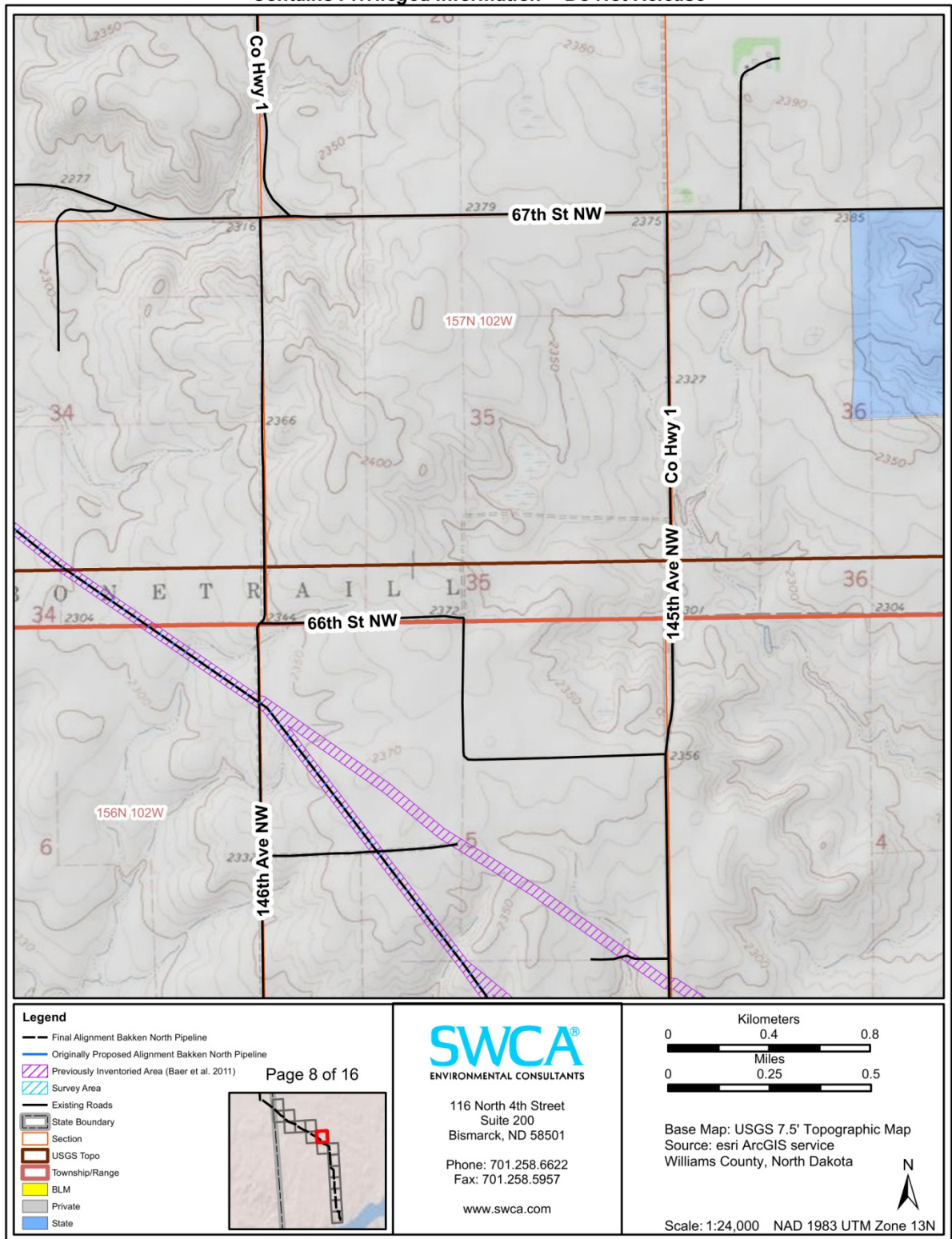


Figure 9. Project area map 8 of 16.

Contains Privileged Information -- Do Not Release

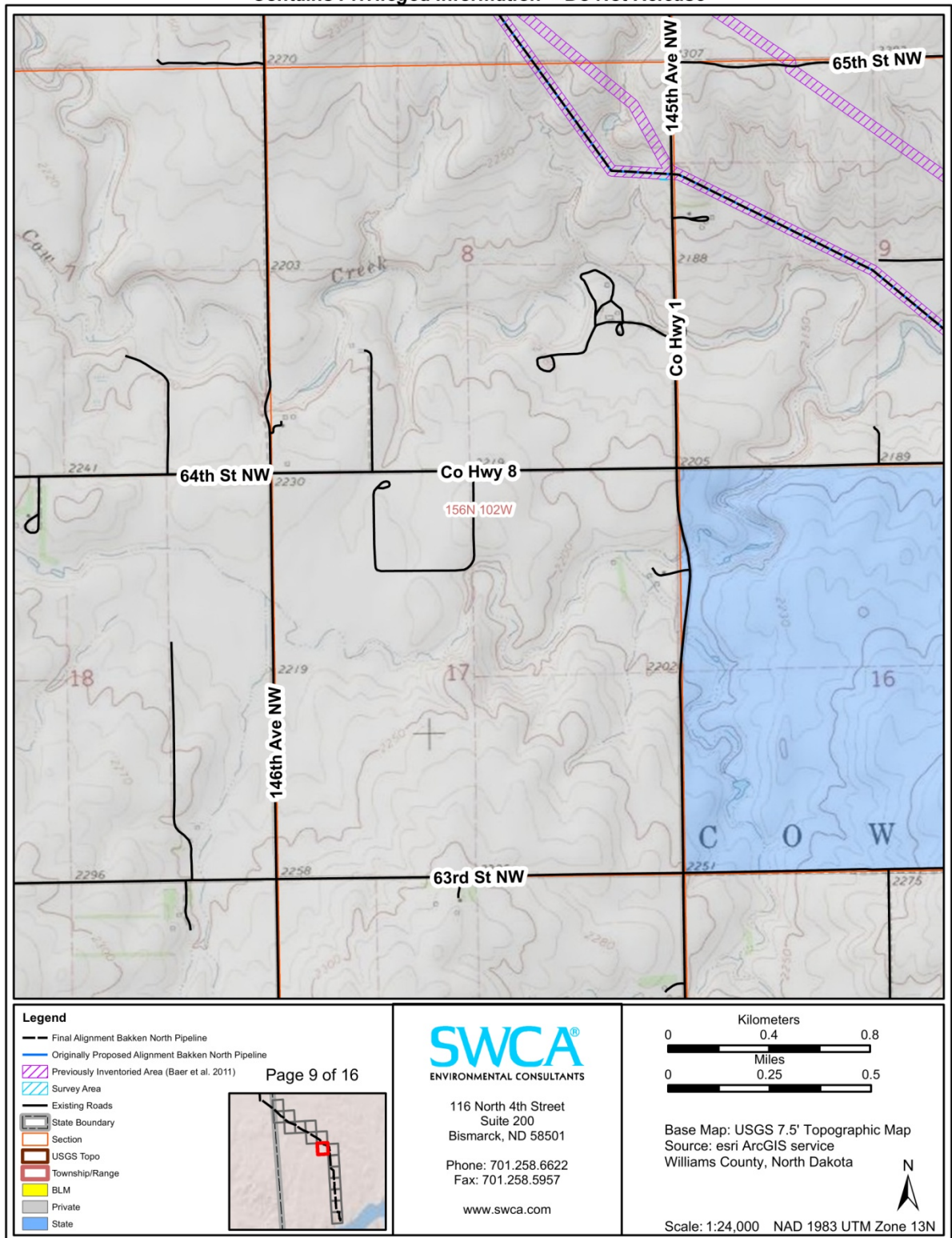


Figure 10. Project area map 9 of 16.

Contains Privileged Information -- Do Not Release

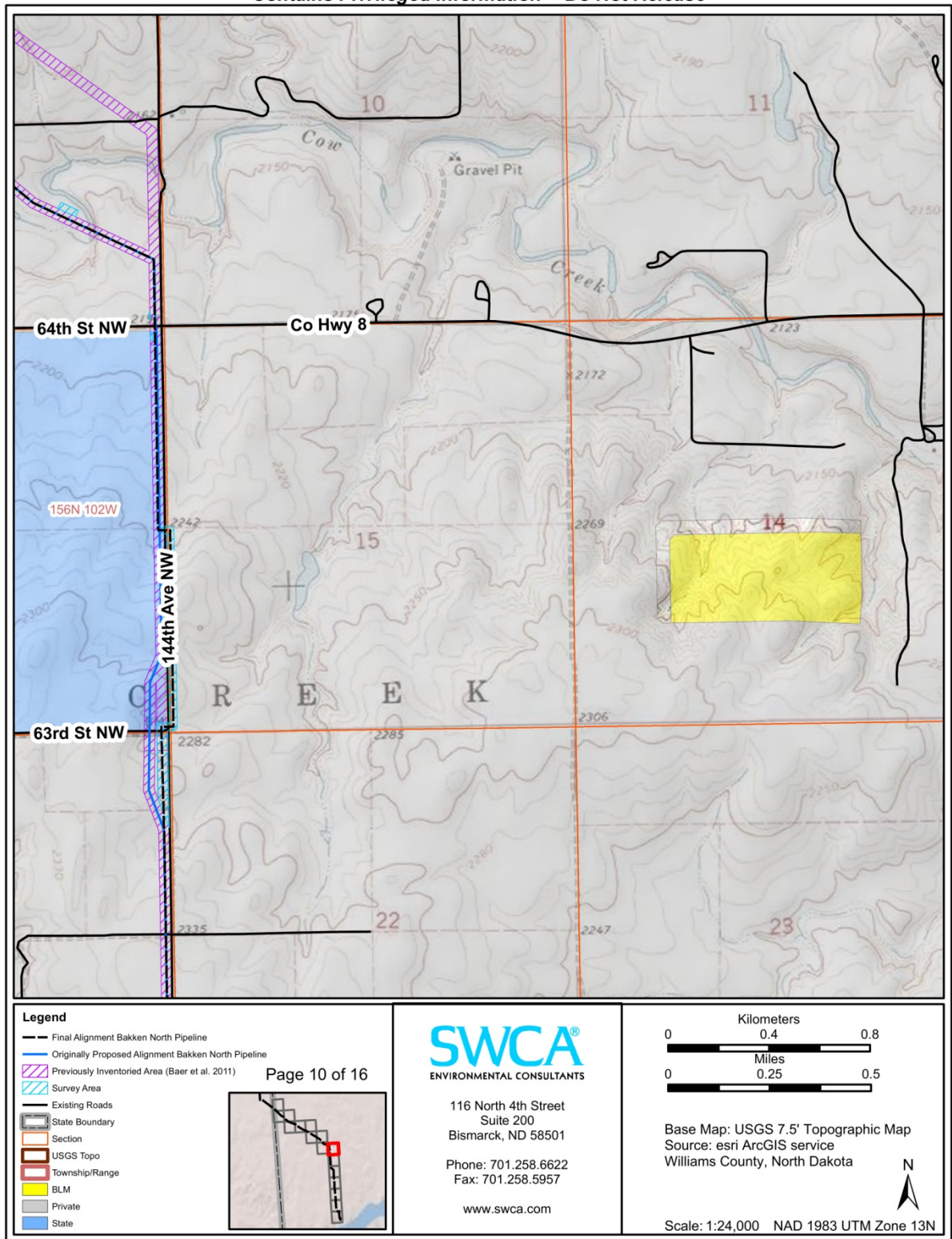


Figure 11. Project area map 10 of 16.

Contains Privileged Information -- Do Not Release

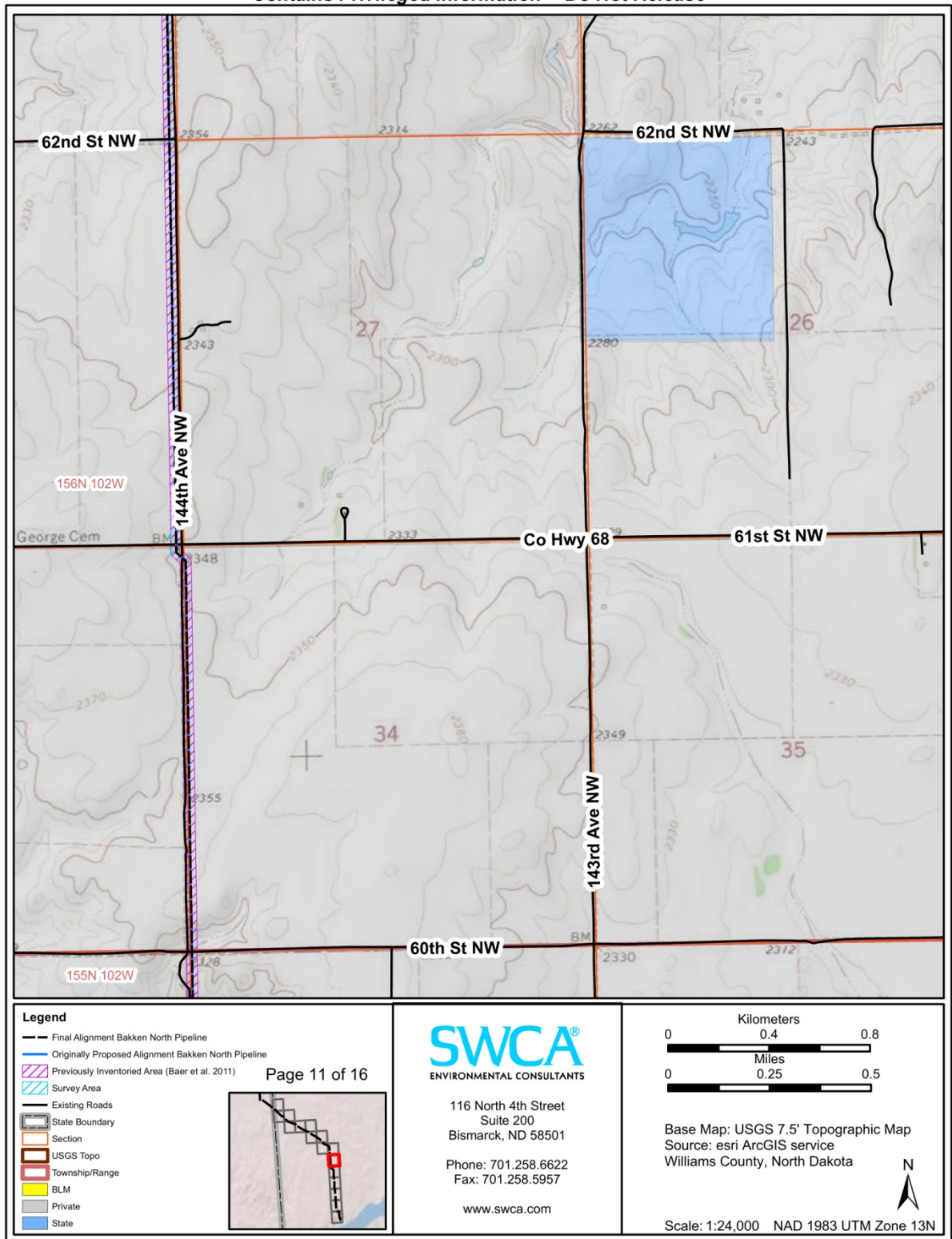


Figure 12. Project area map 11 of 16.

Contains Privileged Information -- Do Not Release

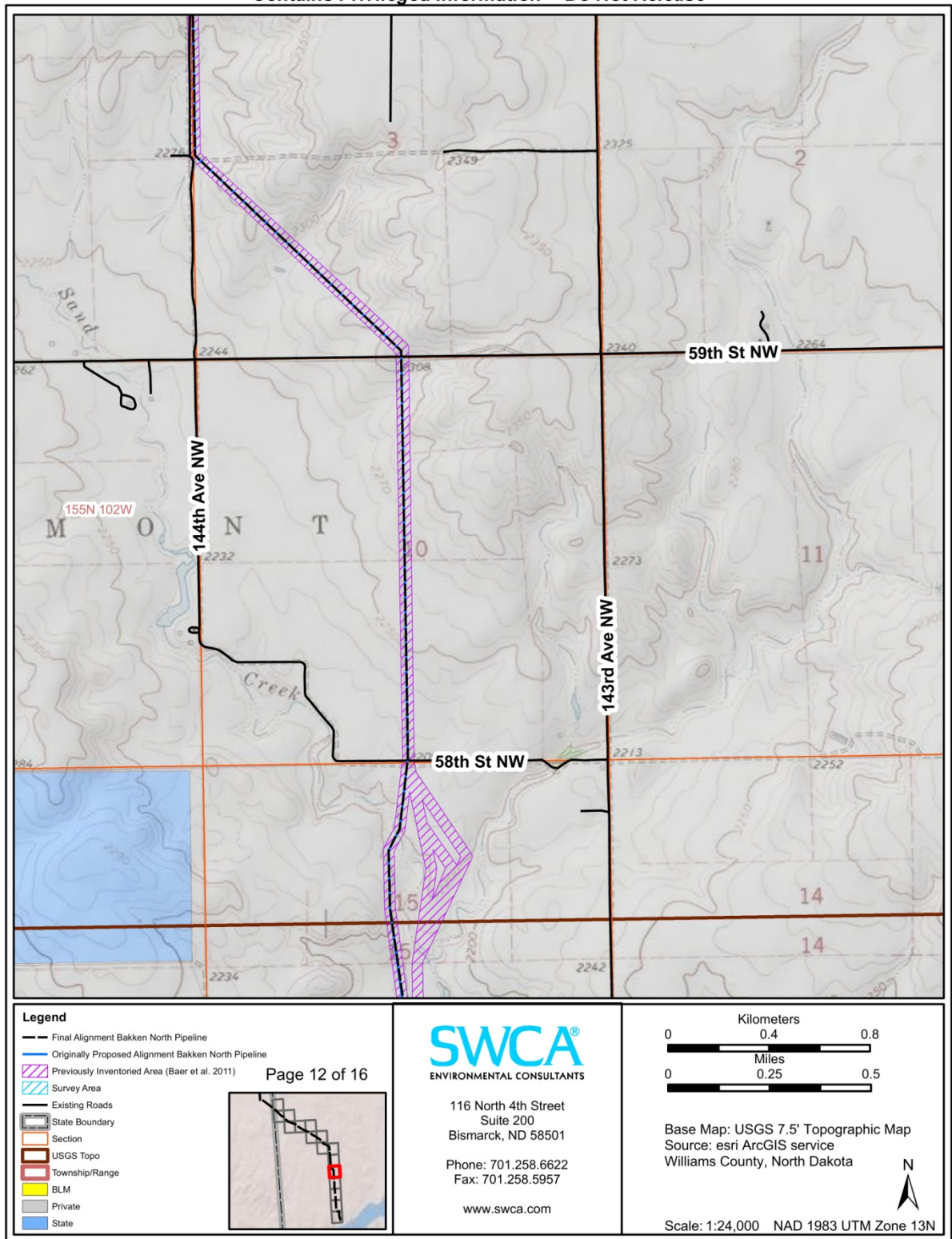


Figure 13. Project area map 12 of 16.

Contains Privileged Information -- Do Not Release

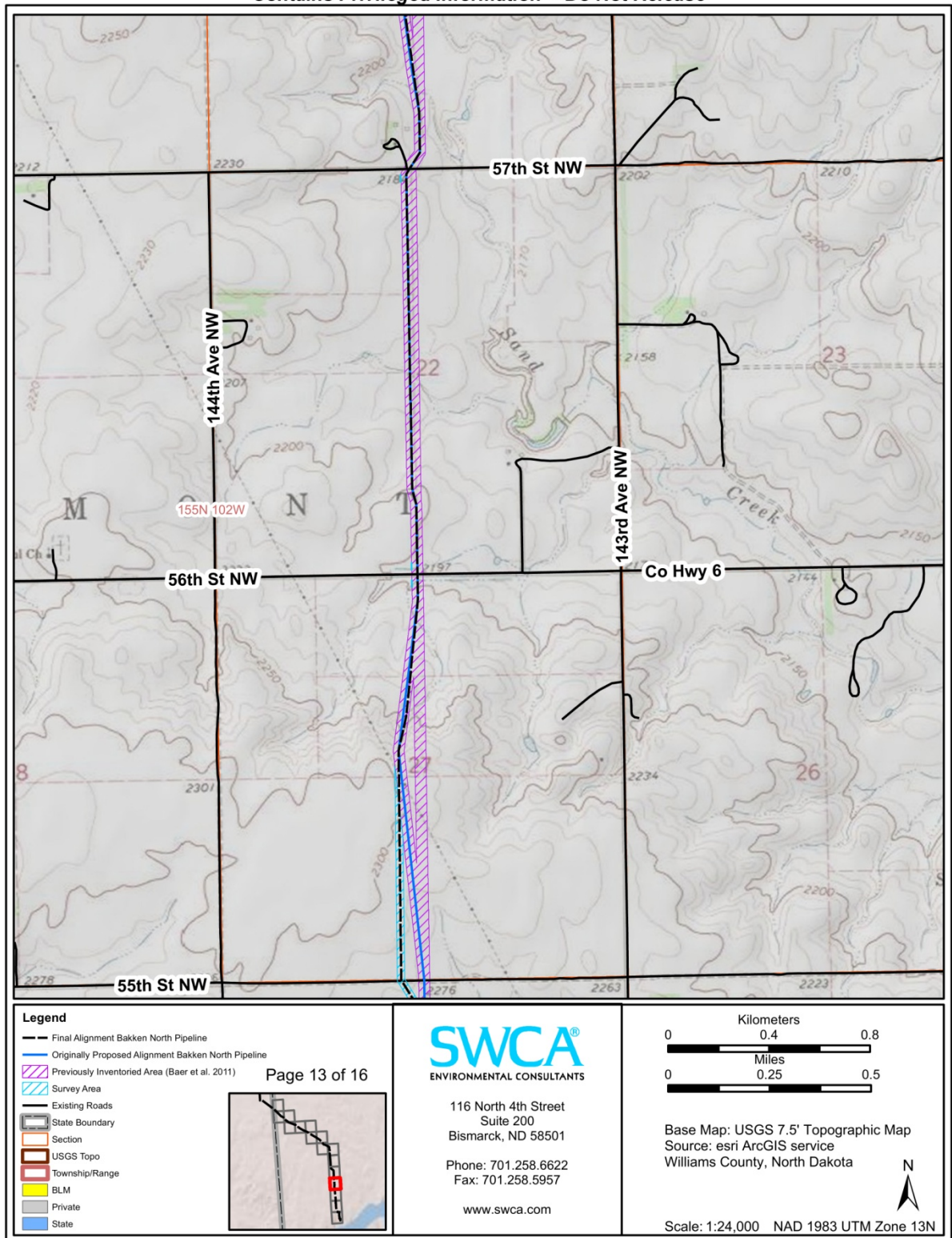


Figure 14. Project area map 13 of 16.

Contains Privileged Information -- Do Not Release

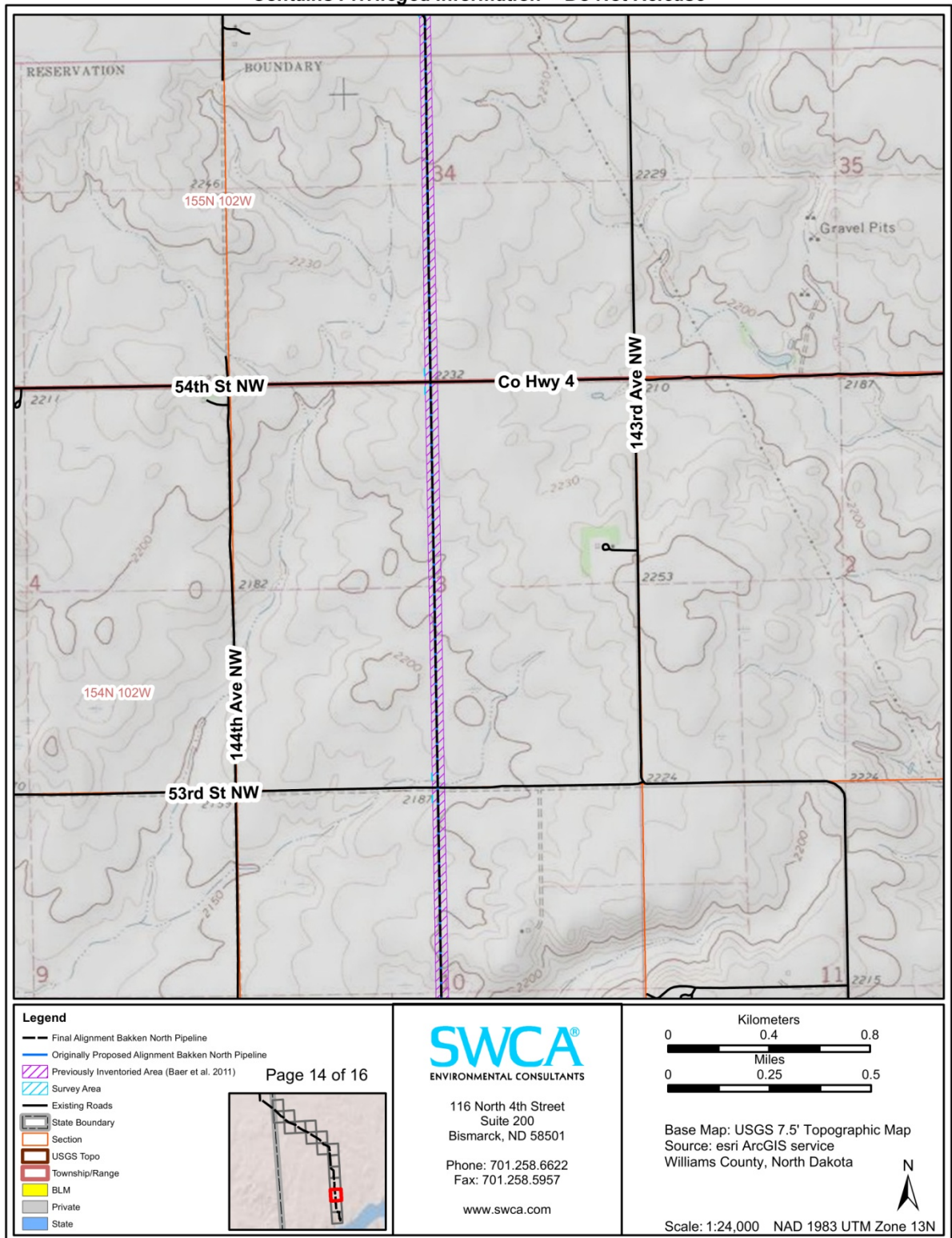


Figure 15. Project area map 14 of 16.

Contains Privileged Information -- Do Not Release

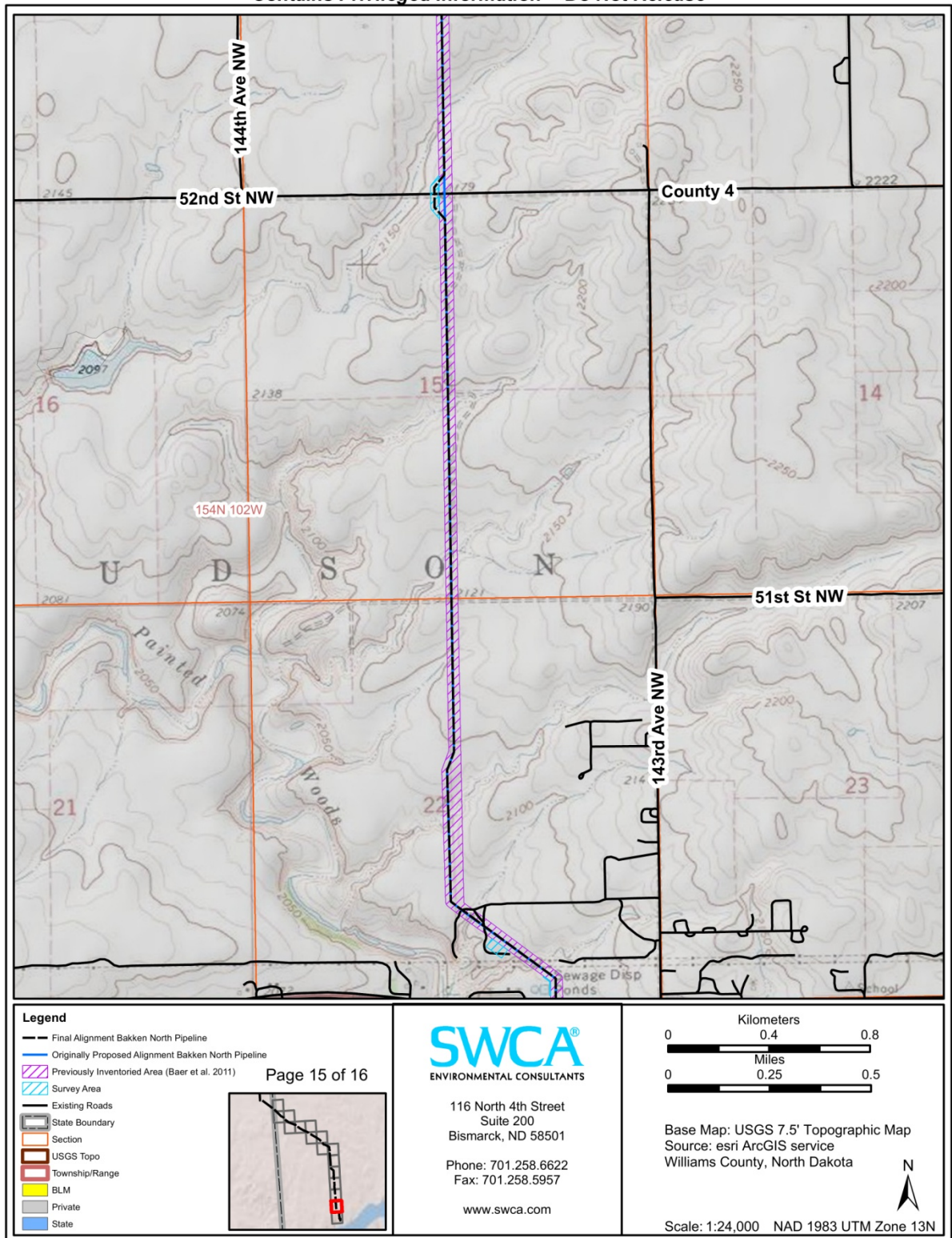


Figure 16. Project area map 15 of 16.

Contains Privileged Information -- Do Not Release

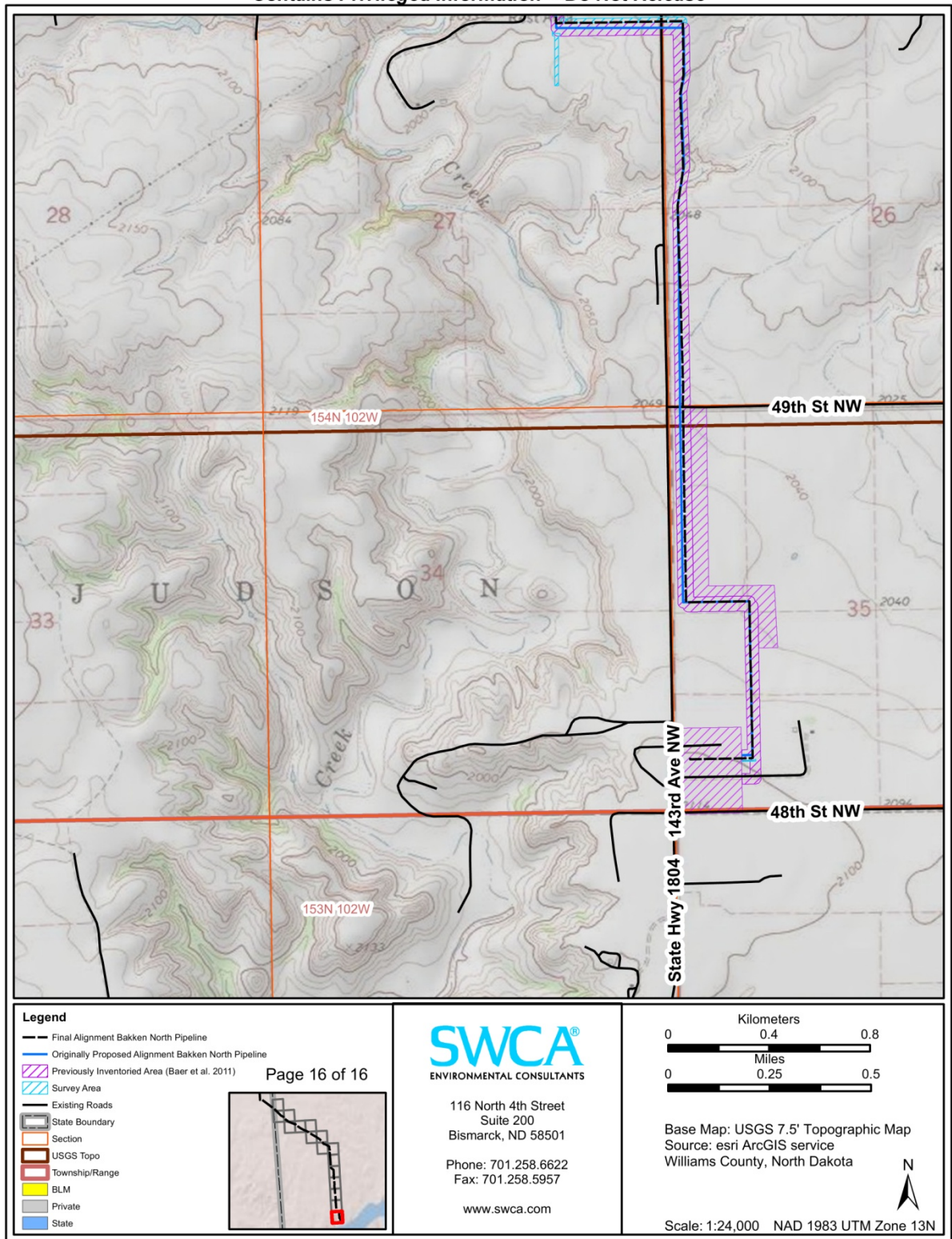


Figure 17. Project area map 16 of 16.

PROJECT SETTING AND BACKGROUND

The project setting, including discussions of the topography, climate, hydrology, geology, soils, and flora and fauna; environmental constraints; and cultural and historic overview are described in the original Class I and Class III report (Baer et al. 2011).

BACKGROUND RESEARCH

As part of the initial phase of this investigation, SWCA conducted a background search of archaeological and historical literature and records for the project area and surrounding 1-mile area. Researchers searched relevant records holdings at the State Historical Society of North Dakota and other available sources for information regarding previously recorded historic and prehistoric sites located within the project area. Background research was conducted on January 26, March 7 and 8, and April 12, 2011. The results of this search are detailed in Baer et al. (2011). No previously recorded sites are located within the reroute survey area.

FIELDWORK METHODS

The inventory area included irregularly shaped survey areas totaling 129.75 acres. Inventory was conducted by means of pedestrian transects spaced at no more than 30 meters (m). No subsurface testing was conducted. For a detailed discussion of the project survey methods and site evaluation, refer to Baer et al. (2011).

INVENTORY RESULTS AND RECOMMENDATIONS

The Class III inventory was performed on August 16–19 and September 19, 2011, for the proposed Bakken North Pipeline reroutes. SWCA archaeologists newly recorded two sites (32WI1183 and 32WI1184), discussed in detail below. 32WI1184 falls within an area previously inventoried (Baer et al. 2011); however, during the current survey while SWCA archaeologists surveyed the adjacent area the site was observed due to increased ground surface visibility in the previously inventoried area. SWCA also surveyed a reroute around 32WI1151, an unevaluated prehistoric stone feature site identified during the initial centerline survey (Baer et al. 2011). As a result of the reroute inventory, SWCA recommends updates to the site management approach. The North Dakota Site Forms for the resources are provided in Appendix A (detached) and resource location maps are provided in Appendix B.

32WI1151

On September 19, 2011, SWCA surveyed a reroute to the east of 32WI1151, a site recorded during the initial Bakken North pipeline centerline inventory (Baer et al. 2011). 32WI1151 is a prehistoric stone feature site that was left unevaluated regarding its NRHP eligibility. Avoidance of the site was recommended pending further work. At that time of the initial recording, the pipeline was proposed to pass immediately west of 32WI1151. Given the close proximity of the alignment, fencing and archaeological monitoring were recommended at the site during pipeline construction.

The current reroute was inventoried to the east of 32WI1151 due to easement issues encountered following the initial inventory (Figure 18). Using this reroute, as proposed, the final pipeline construction corridor will avoid 32WI1151 by 91 feet. Therefore, because 32WI1151 is adequately avoided, fencing and monitoring are no longer recommended. No further work is recommended.

Contains Privileged Information -- Do Not Release

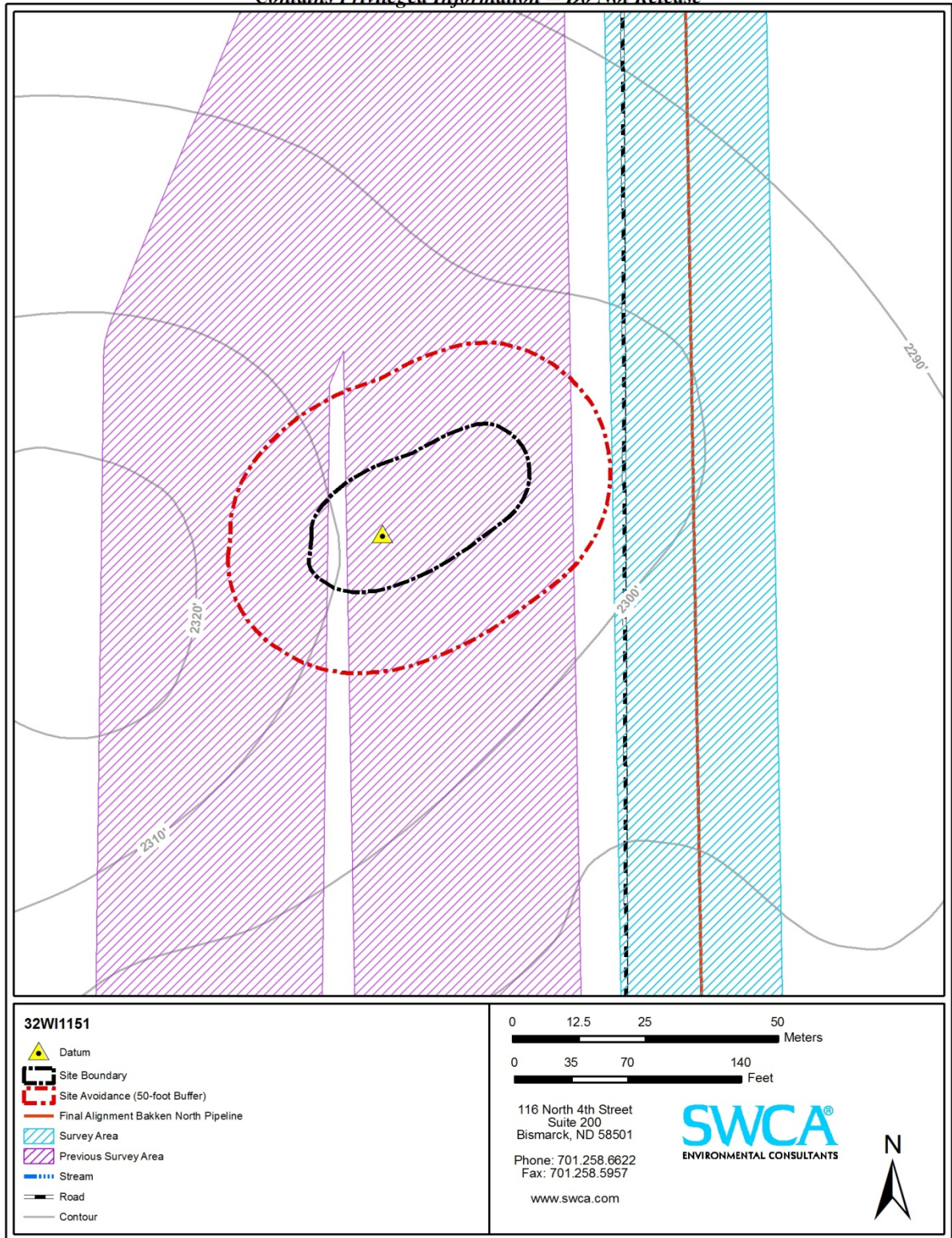


Figure 18. 32WI1151 site sketch map.

32WI1183

Site Type:	Stone Circle and Cairn
Association:	Unknown Prehistoric
Site Size:	18.49 by 61.73 m (877.82 m ²)
NRHP Recommendation:	Unevaluated
Management Recommendation/Project Effect:	Avoid/No Effect

Site Description

32WI1183 is a stone circle and cairn site located atop a small knoll on a larger, east/west-trending ridge which overlooks a pond/wetland to the north and an agricultural field in a drainage valley to the south (Figures 19 and 20). The site is situated in rolling topography, dominated by agricultural fields with occasional areas of native prairie. Vegetation in the area consists of little bluestem, Kentucky bluegrass, junegrass, fringe and green sages, sweet clover, purple coneflower, and prairie rose. Vegetation cover was thick, allowing for an average bare ground visibility of approximately 10 percent, with greater visibility on slopes. Topsoil at the site is a medium gray/brown silty clay loam with pebble inclusions, primarily consisting of quartzite. The site is in fair condition and has been minimally affected by erosion. Secondary impacts to the site include bioturbation from prairie dogs and agriculture in the surrounding area; however, because of its location atop a ridge, the site seems to have escaped direct impacts by agricultural activity.



Figure 19. 32WI1183 site overview, facing southwest.

Contains Privileged Information -- Do Not Release

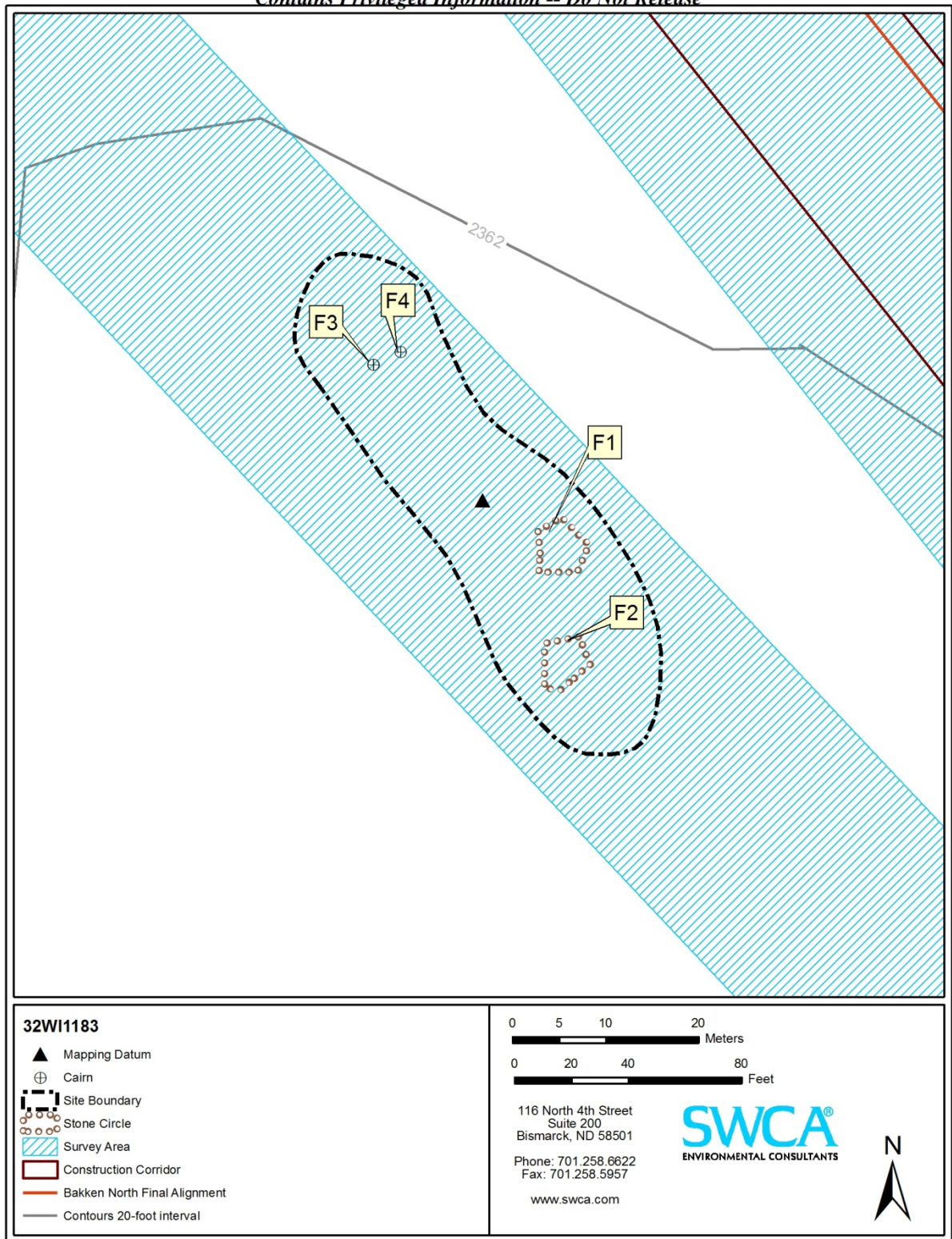


Figure 20. 32WI1183 site sketch map.

Survey Results

SWCA newly recorded 32WI1183 on August 16, 2011. The site consists of two stone circles (Features 1 and Features 2) and two stone cairns (Features 3 and 4). Features 3 and 4 are located on the northern edge of the knoll and Features 1 and 2 are located in the center of the knoll in a flat area. No artifacts were observed.

Feature 1 is a stone circle composed of 15 quartzite cobbles, ranging in size from 15 to 27 centimeters (cm) (Figure 21). The stone circle measures 2.7 m north/south by 2.3 m east/west. Feature 1 is deeply sodded, displays a single course, exhibits 80 to 95 percent lichen growth, and contains no visible wall gaps.

Feature 2 is a stone circle located south of Feature 1 and is composed of 13 cobbles, ranging in size from 9 to 17 cm (Figure 22). The stone circle measures 2.5 m north/south by 2.7 m east/west. Feature 2 is deeply sodded, displays a single course, exhibits 80 to 95 percent lichen growth, and contains no visible wall gaps.

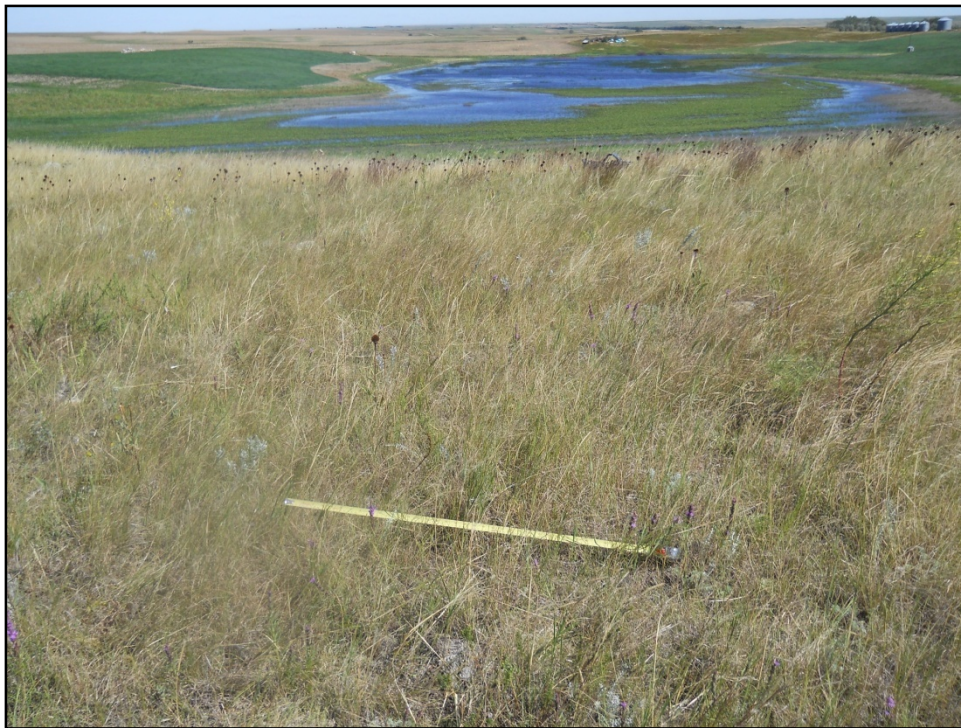


Figure 21. 32WI1183, Feature 1, stone circle, tape at 1 m, facing north.



Figure 22. 32WI1183, Feature 2, stone circle, tape at 1 m, facing north.

Feature 3 is a deflated, oval-shaped stone cairn located northwest of Features 1 and 2, and contains 30 quartzite cobbles, ranging in size from 10 to 30 cm (Figure 23). The cairn measures 1.8 m north/south by 1.4 m east/west, and rises approximately 7 cm above the ground surface. Feature 3 exhibits 80 to 95 percent lichen growth and is heavily sodded.

Feature 4 is an oval-shaped stone cairn located adjacent to Feature 3, and contains 95 quartzite cobbles, ranging in size from 7 to 35 cm (Figure 24). The cairn measures 2.5 m north/south by 1.4 m east/west and rises approximately 10 cm above the ground surface. Feature 4 displays 80 to 95 percent lichen growth and is heavily sodded.



Figure 23. 32WI1183, Feature 3, stone cairn, tape at 1 m, facing east.



Figure 24. 32WI1183, Feature 4, stone cairn, tape at 1 m, facing west.

NRHP Recommendation

32WI1183 is a newly recorded stone feature site located on a small knoll on a larger east/west-trending ridge. The site is in fair condition and has been minimally affected by erosion, bioturbation, and nearby agricultural practices. While no subsurface testing was performed at the site due to the presence of cultural features that may be considered of a sacred nature, subsurface testing may yield important information necessary to refine temporal association. Accordingly, SWCA recommends the site remain unevaluated regarding its NRHP eligibility under Criterion D until subsurface testing can be conducted. The site is also considered unevaluated regarding its NRHP eligibility under Criterion A as a potential Traditional Cultural Property (TCP). Therefore, tribal consultation is recommended.

Management Recommendation

Avoidance is recommended for 32WI1183 pending further work. The pipeline reroute survey corridor in which the site was identified will not be used; it will be abandoned in favor of a route to the northwest. The temporary construction ROW will avoid the site by approximately 124 feet; therefore, the site is adequately avoided. No further work is recommended.

32WI1184

Site Type:	Cairn
Association:	Unknown
Site Size:	3 by 3 m (28.27 m ²)
NRHP Recommendation:	Unevaluated
Management Recommendation/Project Effect:	Avoid, Fence, and Monitor/No Effect

Site Description

32WI1184 is a stone cairn site located on the northern slope of a north/south-trending ridge which overlooks a broad drainage valley to the west and a small, narrow drainage valley to the east (Figures 25 and 26). The site is situated in a rolling topography, dominated by agricultural fields with occasional areas of native prairie. Two parallel tree lines which border an agricultural field are visible to the northwest, and 52nd Street NW and a paralleling barbed-wire fence are approximately 20 m north of the site. An intermittent pond is visible from the site about 0.5 mile to the southwest. The site has a commanding view to the south and west, with visibility over 2 miles. Vegetation in the area consists of junegrass, crested wheatgrass, silver leaf, scurf pea, goats beard, fringe sage, purple coneflower, prairie sand reed, and blazing star. Vegetation cover was thick and allowed for an average bare ground visibility of approximately 5 percent, with greater visibility on the slopes. Topsoil at the site is medium gray/brown silty clay loam with pebble inclusions, primarily consisting of quartzite. The site is in good condition and has been minimally impacted by erosion and livestock grazing.

Contains Privileged Information -- Do Not Release

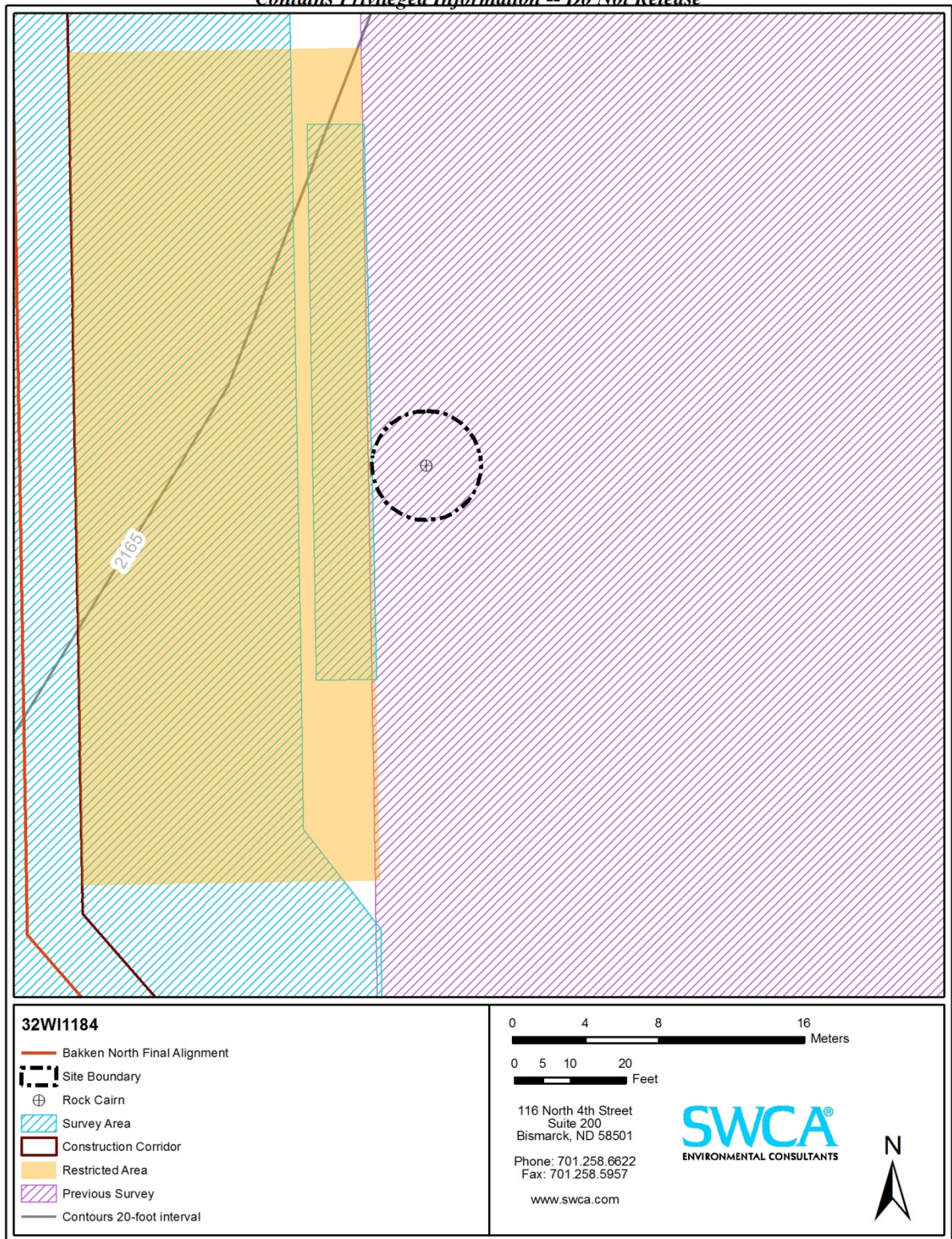


Figure 25. 32WI1184 site sketch map.



Figure 26. 32WI1184 site overview, 52nd Street NW visible in background, facing west.

Survey Results

SWCA newly recorded 32WI1184 on August 17, 2011. The site consists of a single stone cairn (Feature 1). No artifacts were observed. Feature 1 is a lightly to moderately sodded cairn composed of 14 cobbles and angular stones (Figure 27). The largest stone is located at the northern end of the feature and measures 80 cm, while the smallest stone measures 14 cm. The cairn is rectangular-shaped, aligned northeast/southwest, and measures 2.6 m north/south by 1.5 m east/west. The feature measures 37 cm above the ground surface and displays approximately 50 percent lichen growth.



Figure 27. 32WI1184, Feature 1, cairn, tape at 1 m, facing south.

Historic Research

SWCA conducted historic background research for Section 15, T154N, 102W. According to the Bureau of Land Management General Land Office patent search, the land in the northwestern quarter of Section 15 was part of a 160-acre land claim patented to Julia Erickson on August 2, 1909, under the authority of the Original Homestead Act of 1862 (BLM 2011 [1909]: Accession 74793). Julia was born in Minnesota in 1886 and was living in North Dakota with her husband, Andrew Erickson, and three children, Gladys, Irwin, and Olga, by 1910 (U.S. Bureau of the Census 1910: Roll T624_1139). Historical documentation for Julia Erickson in the early part of the twentieth century is limited and SWCA was unable to find records relating to the use of the land to which the patent was issued; consequently, no association can be made between the features at this site and Julia and her family.

NRHP Recommendation

32WI1184 is a newly recorded cairn site located on the northern slope of a north/south-trending ridge. The site is in good condition and has been minimally impacted by erosion and livestock grazing. Historic research found little evidence to suggest the site was associated with any person that made significant contributions to the history of the region; therefore, SWCA recommends 32WI1184 not eligible for nomination to the NRHP under Criterion B. Additionally, the site lacks any features that could be considered representative of a type of construction or the work of a master. As a result, SWCA recommends 32WI1184 not eligible for nomination to the NRHP under Criterion C. Due to the presence of a cultural feature that may be considered of a sacred nature, it is recommended that the site remain unevaluated for nomination to the NRHP under Criterion A as a potential TCP. Therefore, tribal consultation is recommended prior to any further work or evaluation of the site. Additionally, the feature is

moderately sodded, suggesting the potential for intact subsurface cultural materials; however, because of the site's potential to be a TCP, no subsurface testing was conducted. Therefore, SWCA recommends the site remain unevaluated for nomination to the NRHP under Criterion D pending subsurface testing.

Management Recommendation

Avoidance is recommended for 32WI1184 pending further work. A 10-foot-wide construction ROW is planned on the east side of the pipeline centerline adjacent to the site; consequently, the ROW is approximately 54 feet from the site. It is recommended that access to the area abutting the eastern edge of the construction ROW be restricted for a linear distance of 150 feet to ensure all construction activities remain within the corridor. SWCA further recommends that the site be fenced and that a qualified archaeological monitor be present during all ground-disturbing activities adjacent to the site.

CONCLUSIONS

On August 16–19 and September 19, 2011, SWCA conducted a Class III inventory for the proposed Bakken North Pipeline reroutes. The Class III inventory includes irregularly shaped survey areas that combine both block and linear survey methods to accommodate ancillary areas and pipeline reroutes. In total, 129.75 additional acres were inventoried for the project. All proposed construction activities will remain within the area inventoried by SWCA in 2011.

SWCA newly recorded two sites (32WI1183 and 32WI1184) during the inventory. 32WI1183 and 32WI1184 are stone features sites. Both sites are recommended unevaluated regarding their NRHP eligibility; therefore, avoidance is recommended. 32WI1183 is adequately avoided by the final pipeline alignment, as the construction ROW is approximately 124 feet from the site. 32WI1184 is approximately 54 feet from the construction ROW; therefore, it is recommended that access to the area abutting the eastern edge of the construction ROW be restricted for a linear distance of 150 feet to ensure all construction activities remain within the corridor. SWCA further recommends that the site be fenced and that a qualified archaeological monitor be present during all ground-disturbing activities adjacent to the site.

Additionally, SWCA inventoried a reroute to the east of 32WI1151, an unevaluated stone feature site recorded during the initial centerline survey (Baer et al. 2011). At that time of the initial recording, the pipeline was proposed to pass immediately west of 32WI1151. Given the proximity of the alignment, fencing and archaeological monitoring were recommended at the site during pipeline construction. The current reroute was inventoried to the east due to easement issues encountered following the initial inventory. Using this reroute, as proposed, the final pipeline construction corridor will avoid 32WI1151 by 91 feet. Therefore, because 32WI1151 is adequately avoided, fencing and monitoring are no longer recommended. No further work is recommended at 32WI1151.

With the above stipulations it is recommended that the project be granted a determination of *No Historic Properties Affected* and *No Significant Sites Affected* and clearance to proceed as planned.

REFERENCES CITED

Baer, Sarah, Stephanie Lechert, Jolene Schleicher, Michael J. Retter, Celia Moret-Ferguson, Nicholas Smith, and Chandler S. Herson

2011 *A Class I and Class III Cultural Resources Inventory of the Bakken North Pipeline, Williams County, North Dakota*. Prepared by SWCA Environmental Consultants for Plains All American Pipeline, Houston, TX.

Bureau of Land Management (BLM)

2011 U.S. Department of the Interior, Bureau of Land Management General Land Office Records online database. Available online at <http://www.glorerecords.blm.gov/default.aspx>. Accessed October 13, 2011.

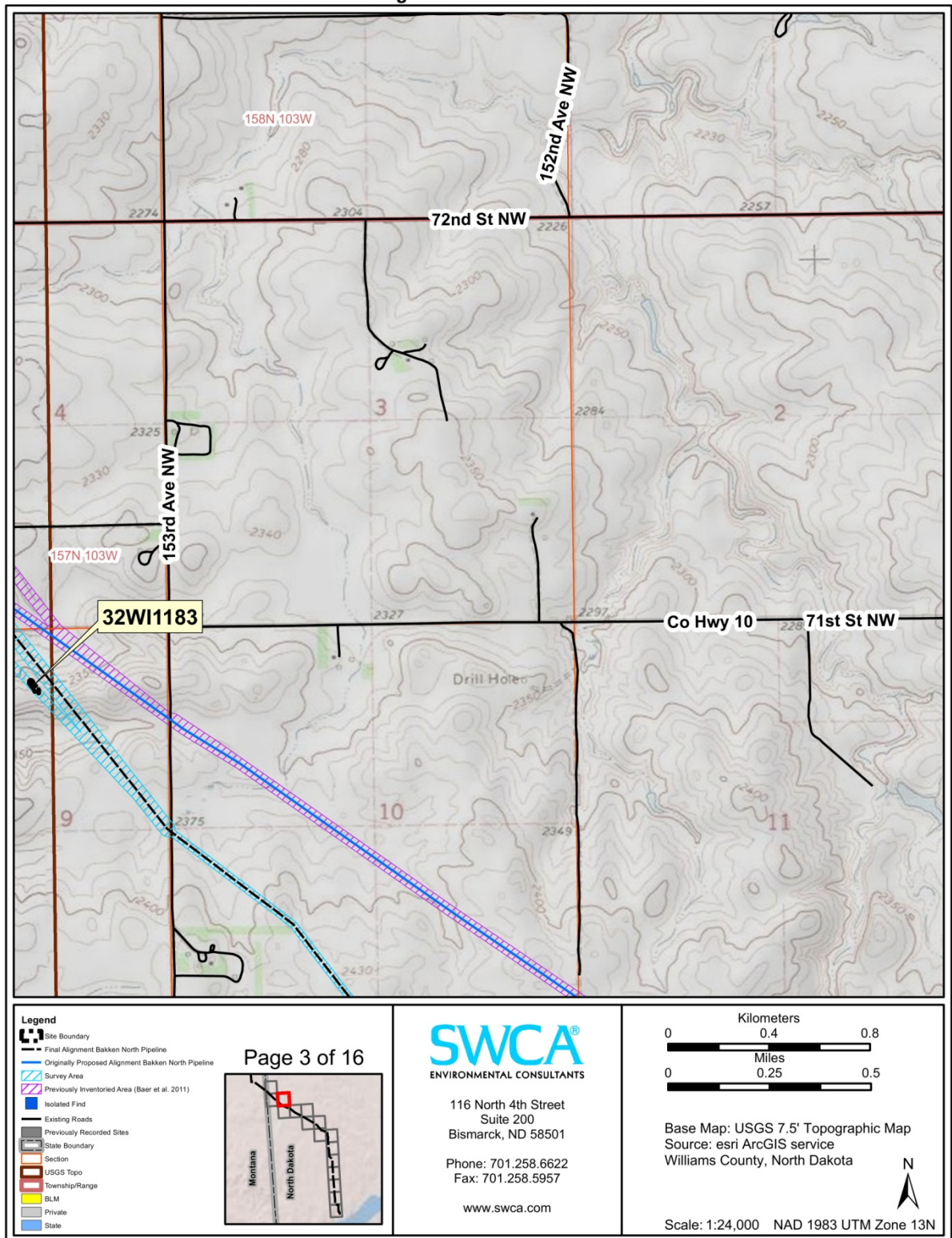
U.S. Bureau of the Census

1910 Fourteenth Census of the United States, 1910, T624, 1139 rolls. National Archives and Records Administration, Washington, D.C.

**APPENDIX A
(Detached)
North Dakota Site Forms**

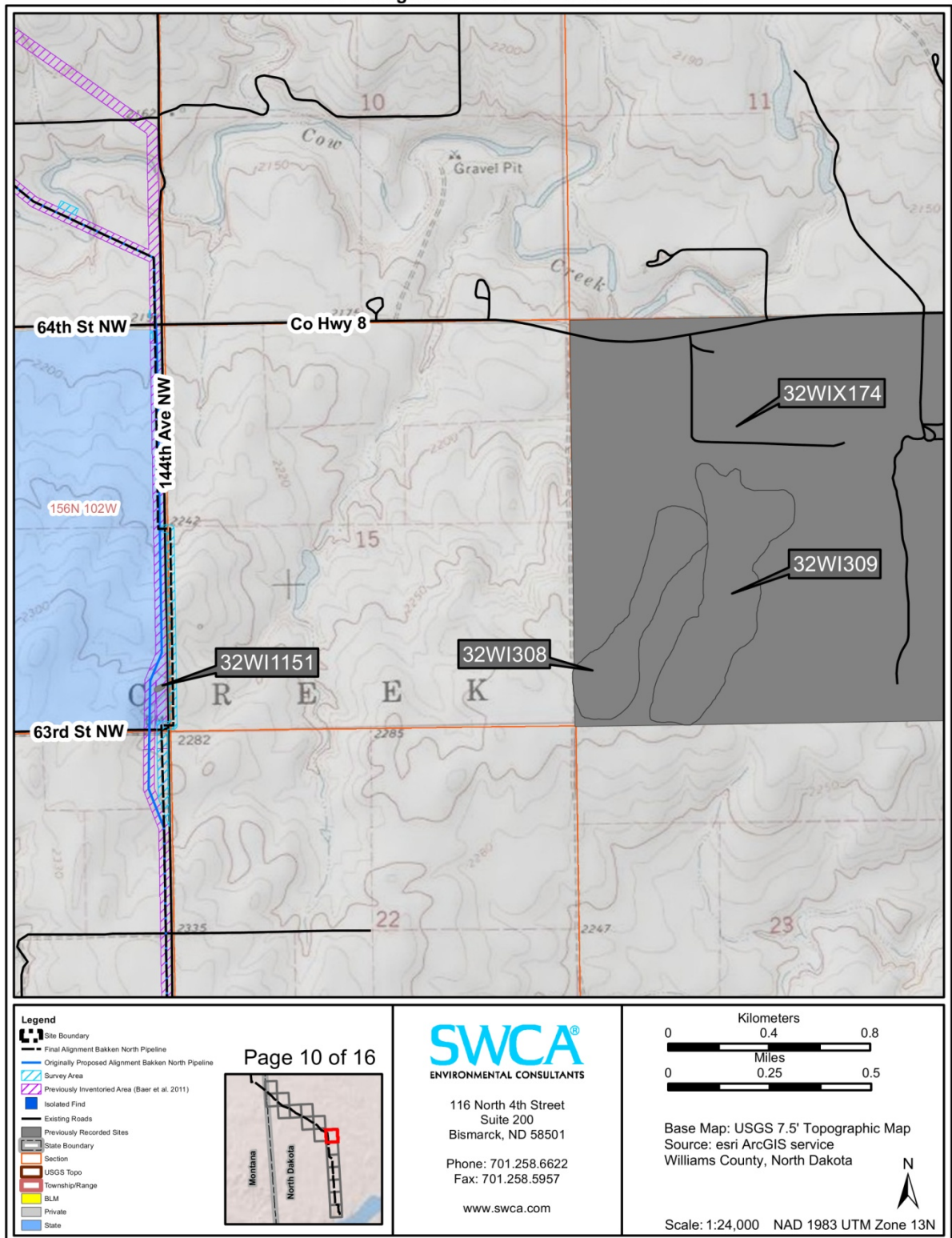
APPENDIX B
Resource Location Maps

Contains Privileged Information -- Do Not Release



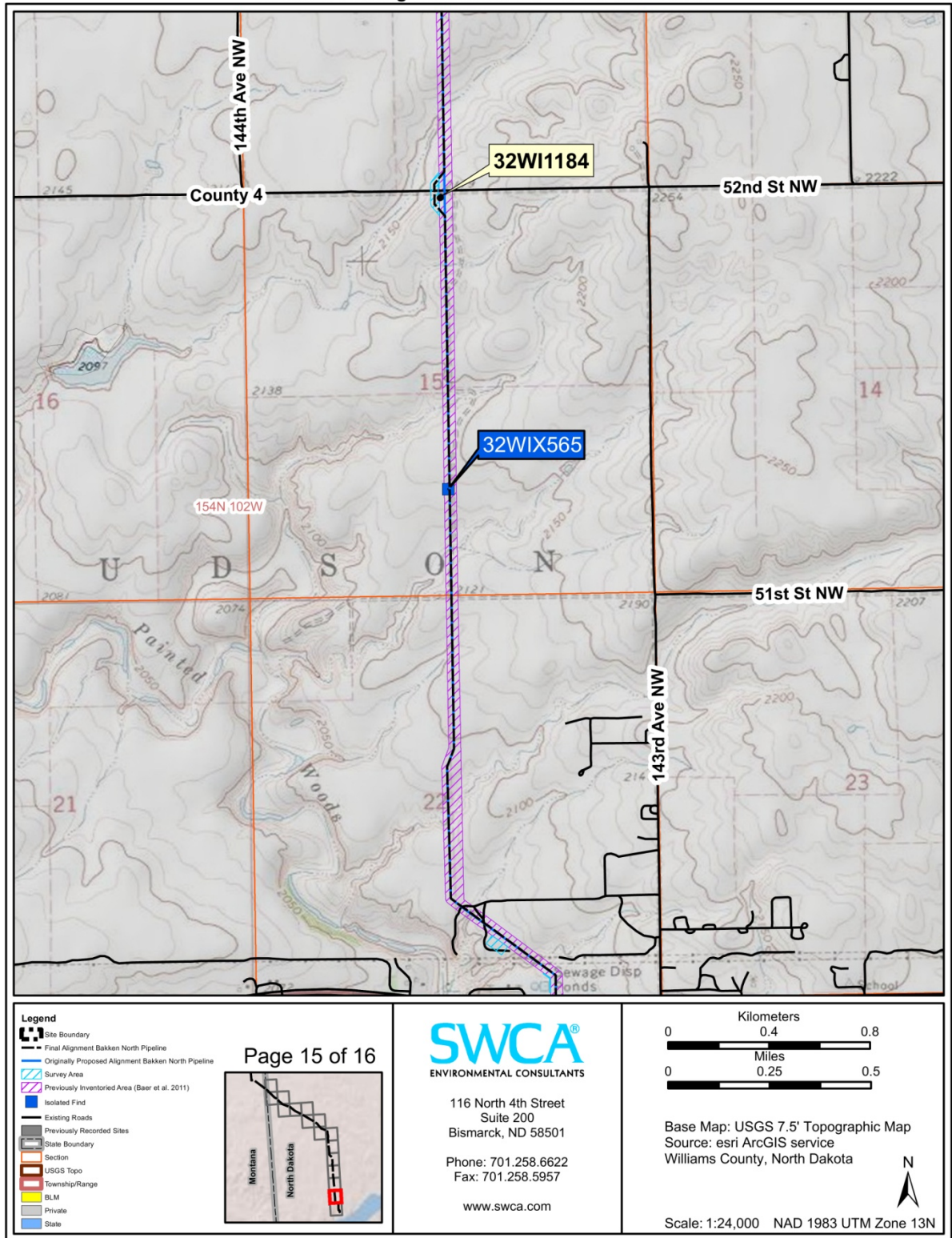
Resource location map of 32WI1183.

Contains Privileged Information -- Do Not Release



Resource location map of 32WI1151.

Contains Privileged Information -- Do Not Release



Resource location map of 32WI1184.